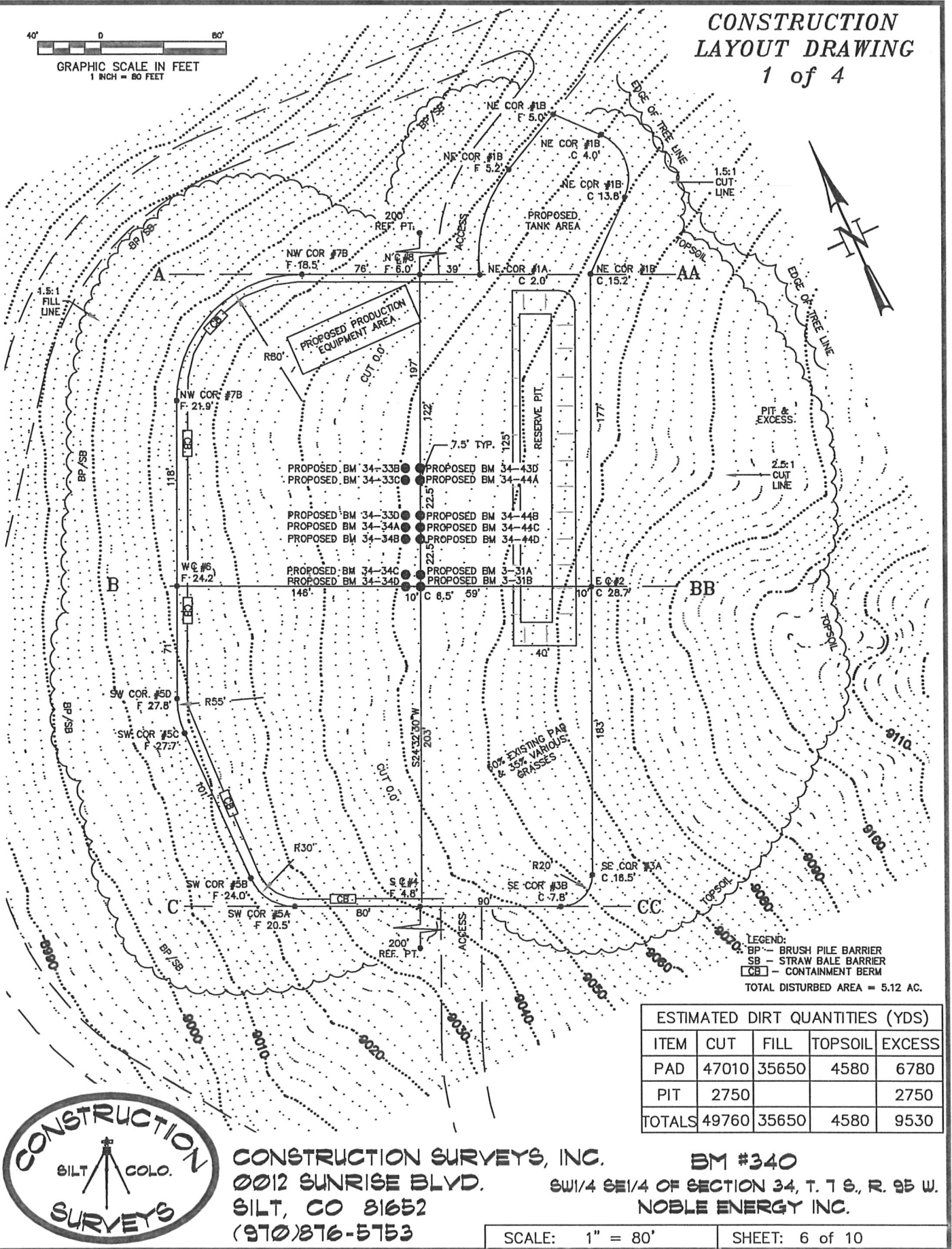


CONSTRUCTION LAYOUT DRAWING 1 of 4



ESTIMATED DIRT QUANTITIES (YDS)				
ITEM	CUT	FILL	TOPSOIL	EXCESS
PAD	47010	35650	4580	6780
PIT	2750			2750
TOTALS	49760	35650	4580	9530

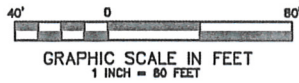


CONSTRUCTION SURVEYS, INC.
 0012 SUNRISE BLVD.
 SILT, CO 81652
 (970)876-5753

BM #340
 SW1/4 SE1/4 OF SECTION 34, T. 7 S., R. 95 W.
 NOBLE ENERGY INC.

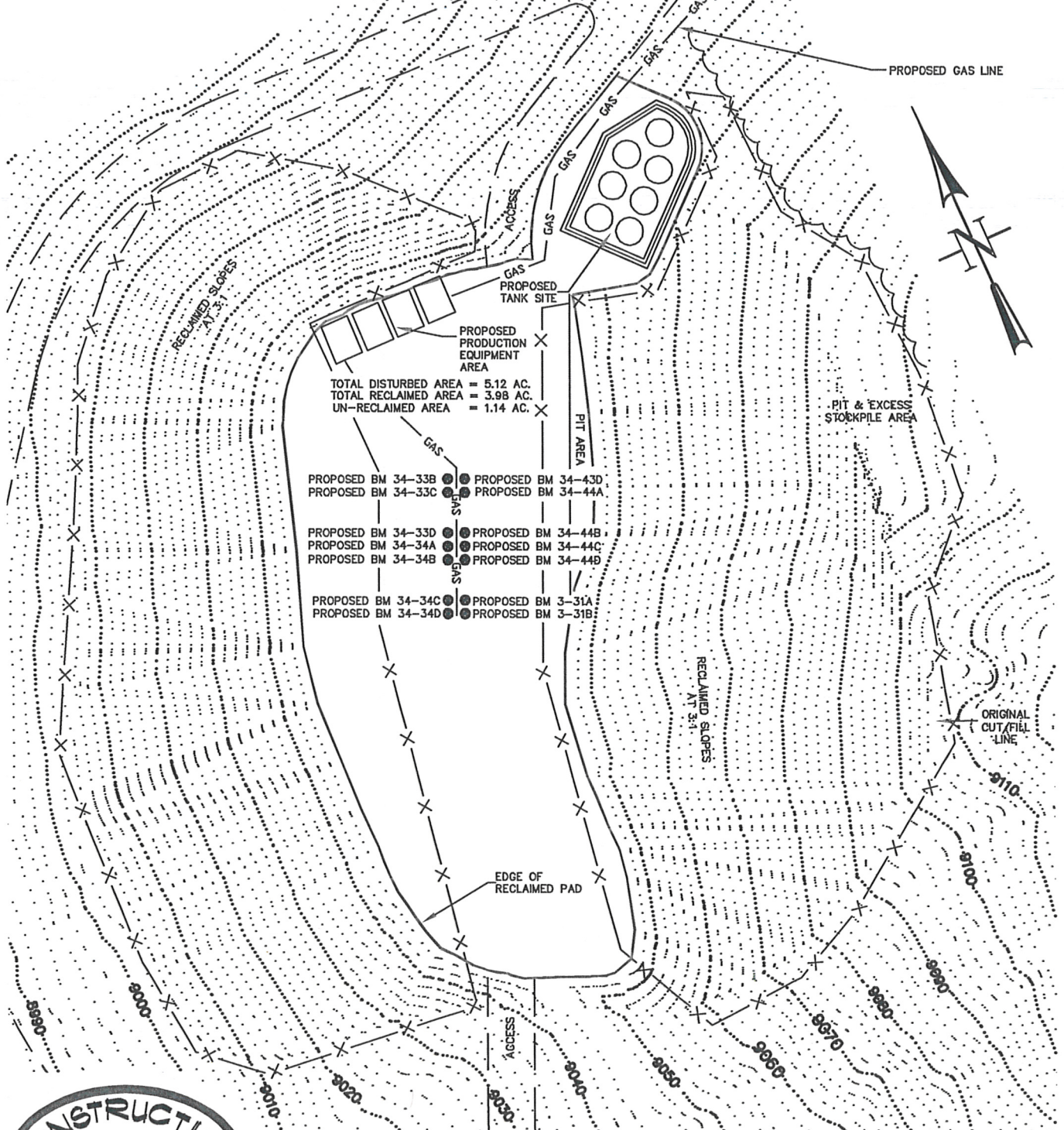
SCALE: 1" = 80'

SHEET: 6 of 10



PROPOSED PRODUCTION EQUIPMENT UNITS: 4 = 14 separators
PROPOSED TANKS: 7

CONSTRUCTION LAYOUT DRAWING 2 of 4 (RECLAMATION PAD)



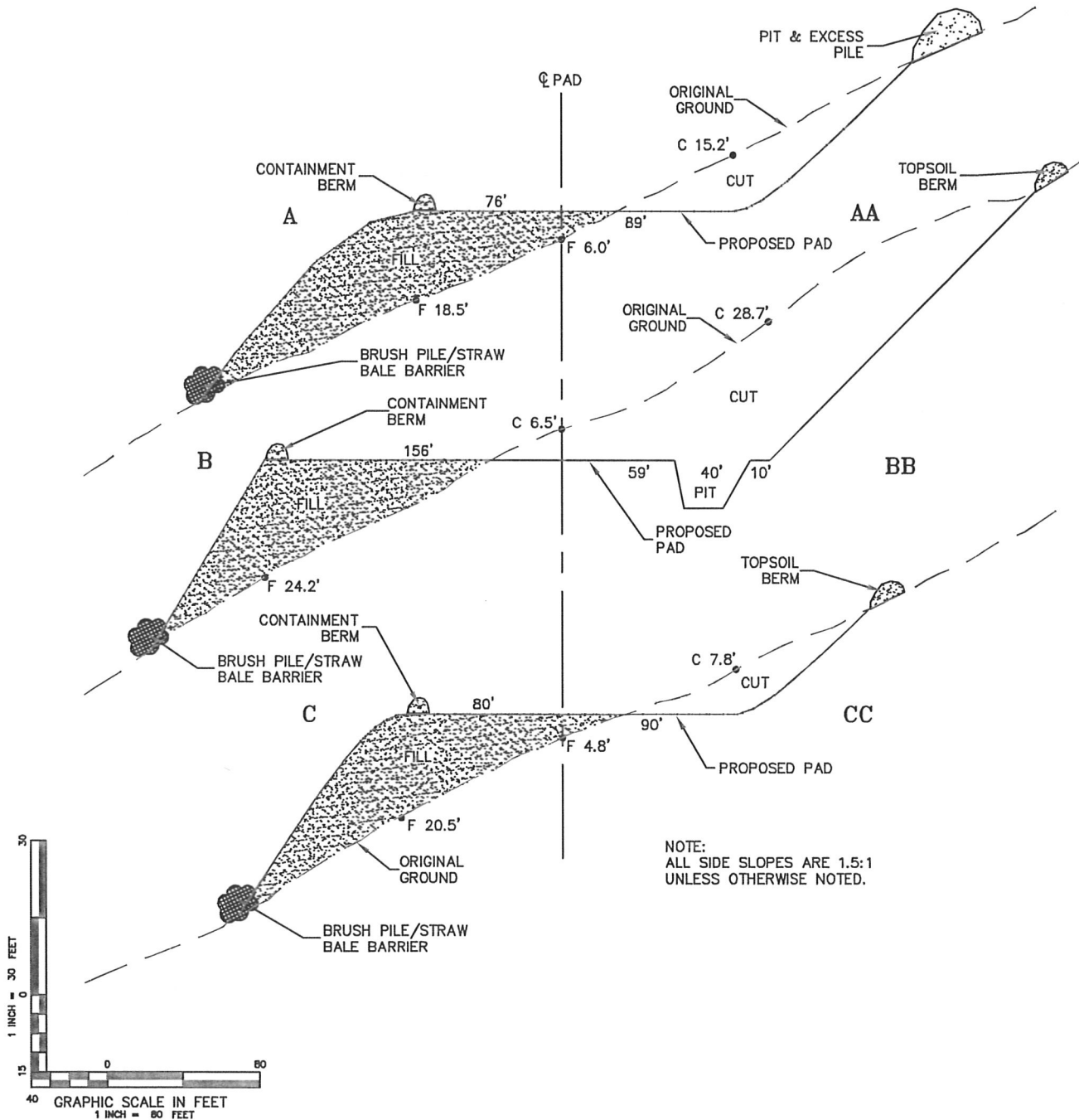
CONSTRUCTION SURVEYS, INC.
0012 SUNRISE BLVD.
SILT, CO 81652
(970)876-5753

BM #340
8W1/4 8E1/4 OF SECTION 34, T. 7 S., R. 95 W.
NOBLE ENERGY INC.

SCALE: 1" = 80'

SHEET: 7 of 10

**CONSTRUCTION
LAYOUT DRAWING
3 of 4
(CROSS SECTIONS
OF PIT & PAD)**



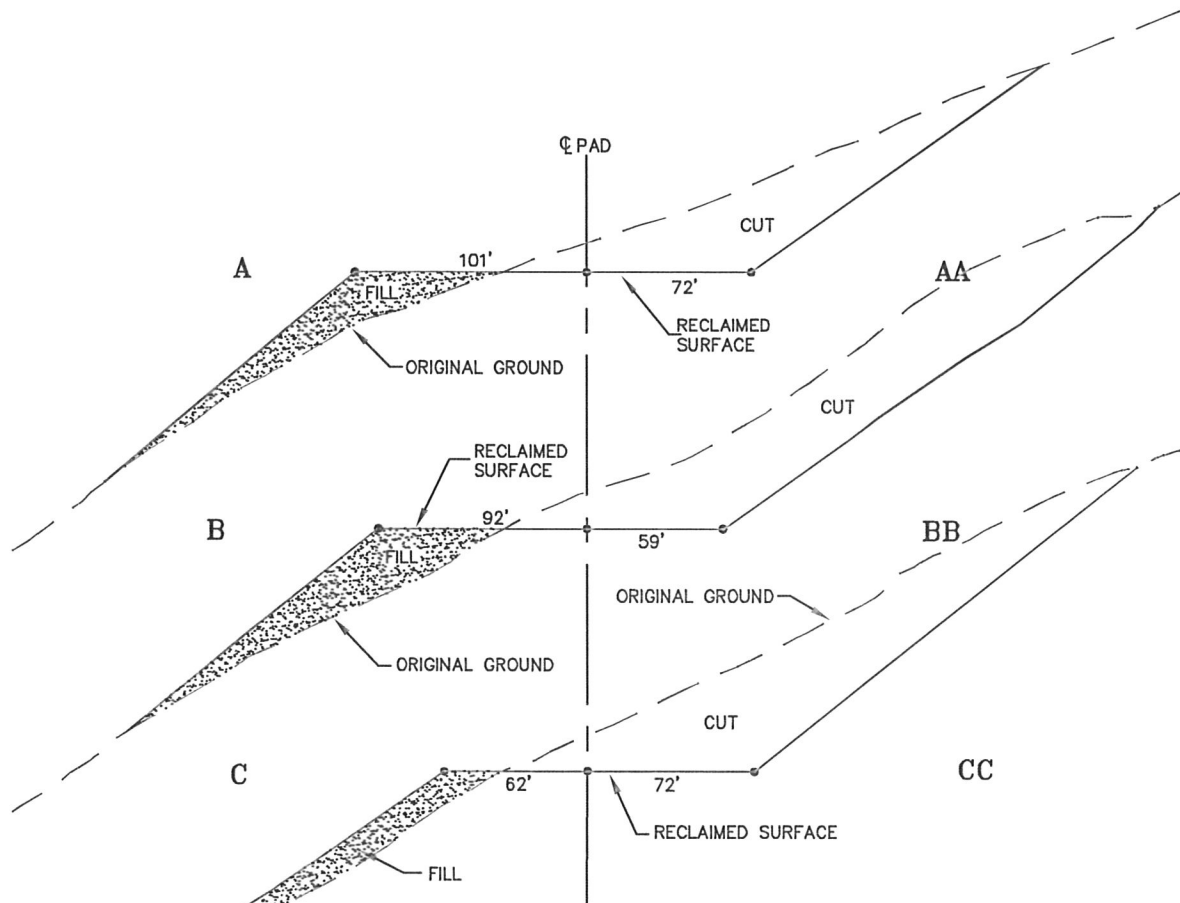
CONSTRUCTION SURVEYS, INC.
0012 SUNRISE BLVD.
SILT, CO 81652
(970)876-5753

BM #340
SW1/4 SE1/4 OF SECTION 34, T. 7 S., R. 95 W.
NOBLE ENERGY INC.

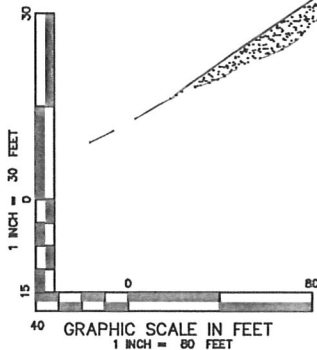
SCALE: AS SHOWN

SHEET: 8 of 10

**CONSTRUCTION
LAYOUT DRAWING
4 of 4
(CROSS SECTIONS OF
FINAL RECLAMATION PAD)**



NOTE:
ALL RECLAIMED SIDE SLOPES ARE
3:1 UNLESS OTHERWISE NOTED.



CONSTRUCTION SURVEYS, INC.
0012 SUNRISE BLVD.
SILT, CO 81652
(970)876-5753

BM #340
SW1/4 SE1/4 OF SECTION 34, T. 7 S., R. 95 W.
NOBLE ENERGY INC.

SCALE: AS SHOWN

SHEET: 9 of 10