

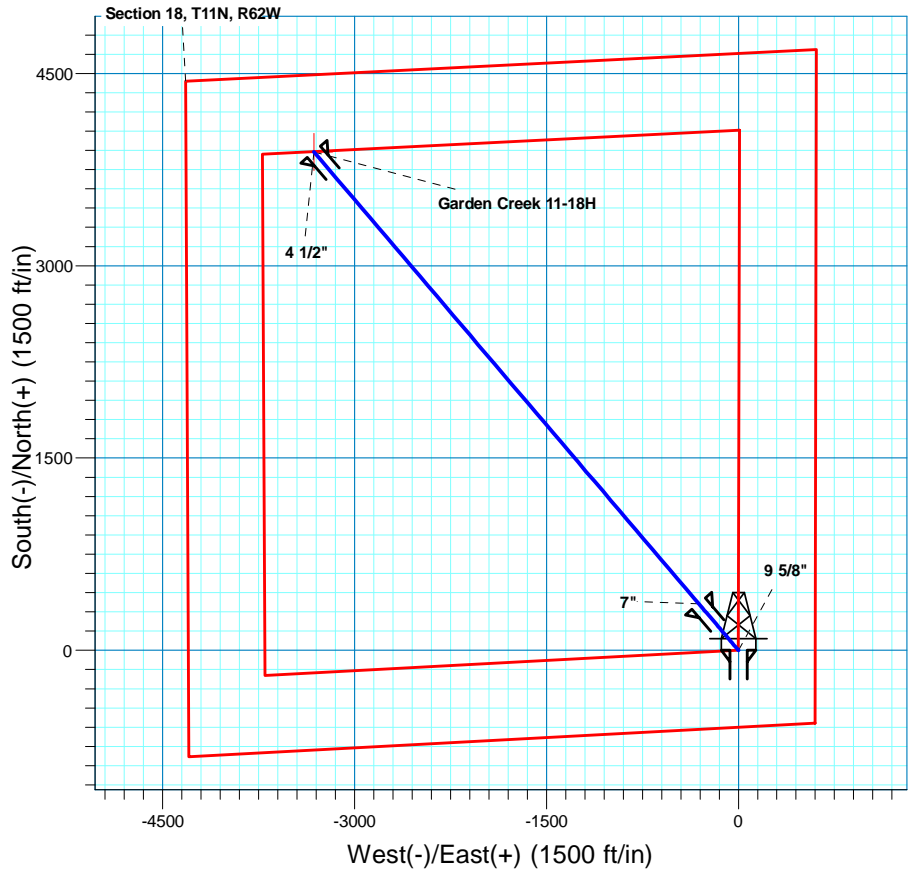
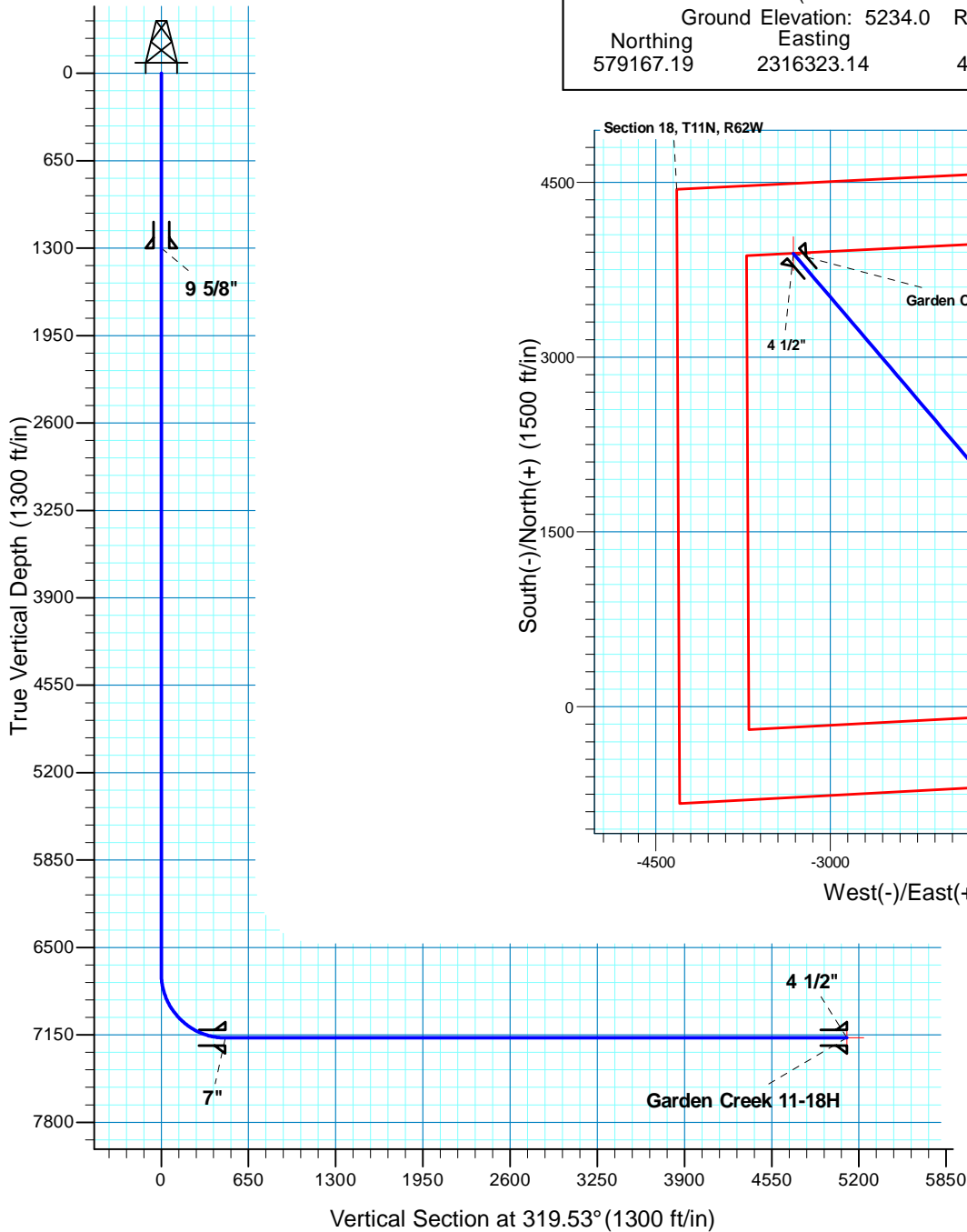
Garden Creek 11-18H

Section 18 T11N R62W

Weld County, CO



Surface Location			
NAD 1927 (NADCON CONUS) Colorado North 501			
Ground Elevation: 5234.0 RIG @ 5259.0ft (TRUE 30)			
Northing	Easting	Latitude	Longitude
579167.19	2316323.14	40°55' 3.382 N	104°21' 19.771 W



T M
 Azimuths to True North
 Magnetic North: 8.84°
 Magnetic Field
 Strength: 53608.3nT
 Dip Angle: 67.59°
 Date: 1/15/2010
 Model: IGRF200510

Project: DJ - Hereford Ranch
 Site: Garden Creek 11-18H
 Well: Garden Creek 11-18H
 Plan: APD

SECTION DETAILS

Sec	MD	Inc	Azi	TVD	+N/-S	+E/-W	DLeg	TFace	VSec	Target
1	0.0	0.00	0.00	0.0	0.0	0.0	0.00	0.00	0.0	
2	6694.5	0.00	0.00	6694.5	0.0	0.0	0.00	0.00	0.0	
3	7444.5	90.00	319.53	7172.0	363.2	-309.9	12.00	319.53	477.5	
4	12077.2	90.00	319.53	7172.0	3887.5	-3316.7	0.00	0.00	5110.1	Garden Creek 11-18H

TARGET DETAILS

Name	TVD	+N/-S	+E/-W	Northing	Easting	Latitude	Longitude	Shape
Garden Creek 11-18H	7172.0	3887.5	-3316.7	583011.51	2312956.52	40°55' 41.790 N	104°22' 2.978 W	Point