

**Patterson**

**DUAL  
INDUCTION  
LOG**

Company	XTO Energy Inc.	Company	XTO Energy Inc.
Well	Golden Eagle 20-03	Well	Golden Eagle 20-03
Field	Purgatoire River	Field	Purgatoire River
County	Las Animas	County	Las Animas
State	Colorado	State	Colorado
Location:	API # : 05 071 08734 00 644' FNL & 2654' FEL	Permanent Datum Log Measured From Drilling Measured From	Ground Level Ground Level Ground Level
	SEC 20 TWP 33S RGE 67W		Elevation 7757'
			Other Services cdl/neutron see comments
			Elevation K.B. ----- D.F. ----- G.L. 7757'
Date	3-15-06		
Run Number	One		
Depth Driller	2545'		
Depth Logger	2540'		
Bottom Logged Interval	2538'		
Top Log Interval	Surface Casing 8 5/8" @ 230'		
Casing Driller	229'		
Casing Logger	7 7/8"		
Bit Size	Water		
Type Fluid in Hole	///		
Density / Viscosity	///		
pH / Fluid Loss	///		
Source of Sample	///		
Rm @ Meas. Temp	///		
Rmf @ Meas. Temp	///		
Rmc @ Meas. Temp	///		
Source of Rmf / Rmc	///		
Rm @ BHT	///		
Time Circulation Stopped	12:30 A.M.		
Time Logger on Bottom	2:30 A.M.		
Maximum Recorded Temperature	111 DEG F		
Equipment Number	T720		
Location	Trinidad		
Recorded By	S. Allen		
Witnessed By	Mr. Don Johnson		

<<< Fold Here >>>

All interpretations are opinions based on inferences from electrical or other measurements and we cannot and do not guarantee the accuracy or correctness of any interpretation, and we shall not, except in the case of gross or willful negligence on our part, be liable or responsible for any loss, costs, damages, or expenses incurred or sustained by anyone resulting from any interpretation made by any of our officers, agents or employees. These interpretations are also subject to our general terms and conditions set out in our current Price Schedule.

**Comments**

Well Directions:  
Hwy 12 Four Miles Past Weston Turn Right(Missy Chavez Place), Thru Gate,  
At T Stay Right. Stay left to location.  
REVISED:  
Database file name is incorrect due to Golden Eagle 20-03 well being  
drilled and logged on the Golden Eagle 20-02 location.

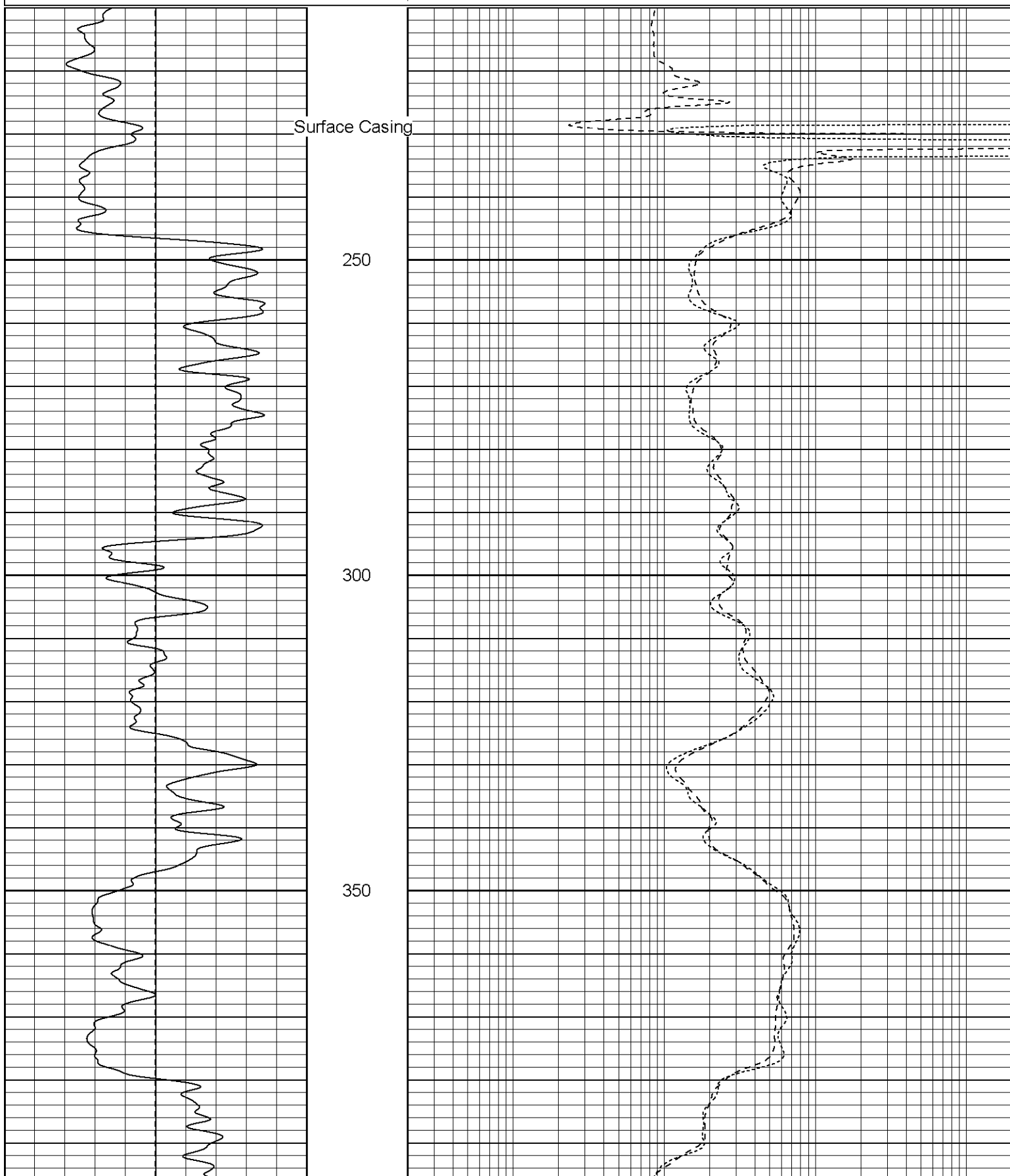
**Patterson**

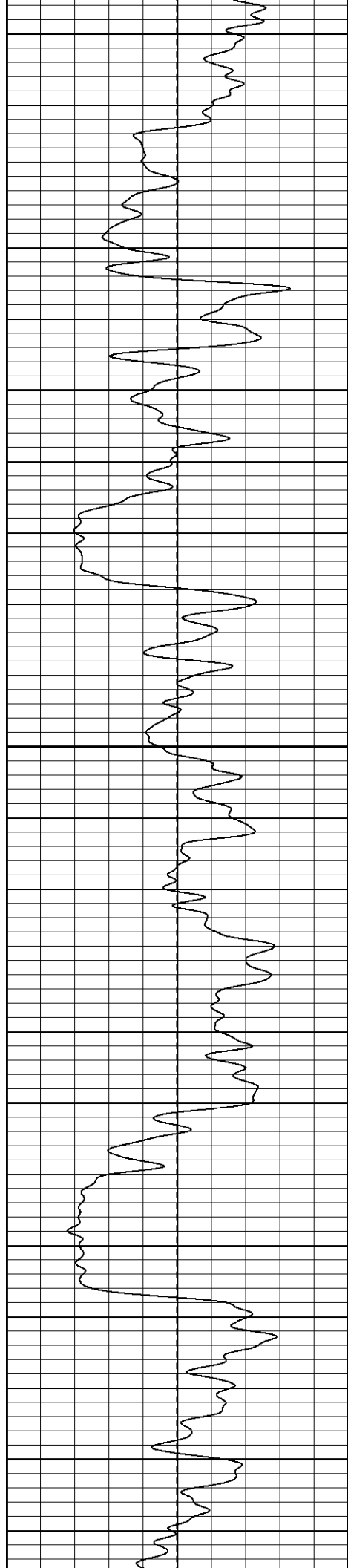
**Main Pass**

Database File: xtoge2002.db  
Dataset Pathname: pass2.2  
Presentation Format: dil  
Dataset Creation: Wed Mar 15 14:29:22 2006 by Calc Warrior 7.0 STD Ope  
Charted by: Depth in Feet scaled 1:240

0	GR (GAPI)	200
-100	SP (mV)	100

0.2	RILD (Ohm-m)	2000
0.2	RILM (Ohm-m)	2000
0.2	RLL3 (Ohm-m)	2000





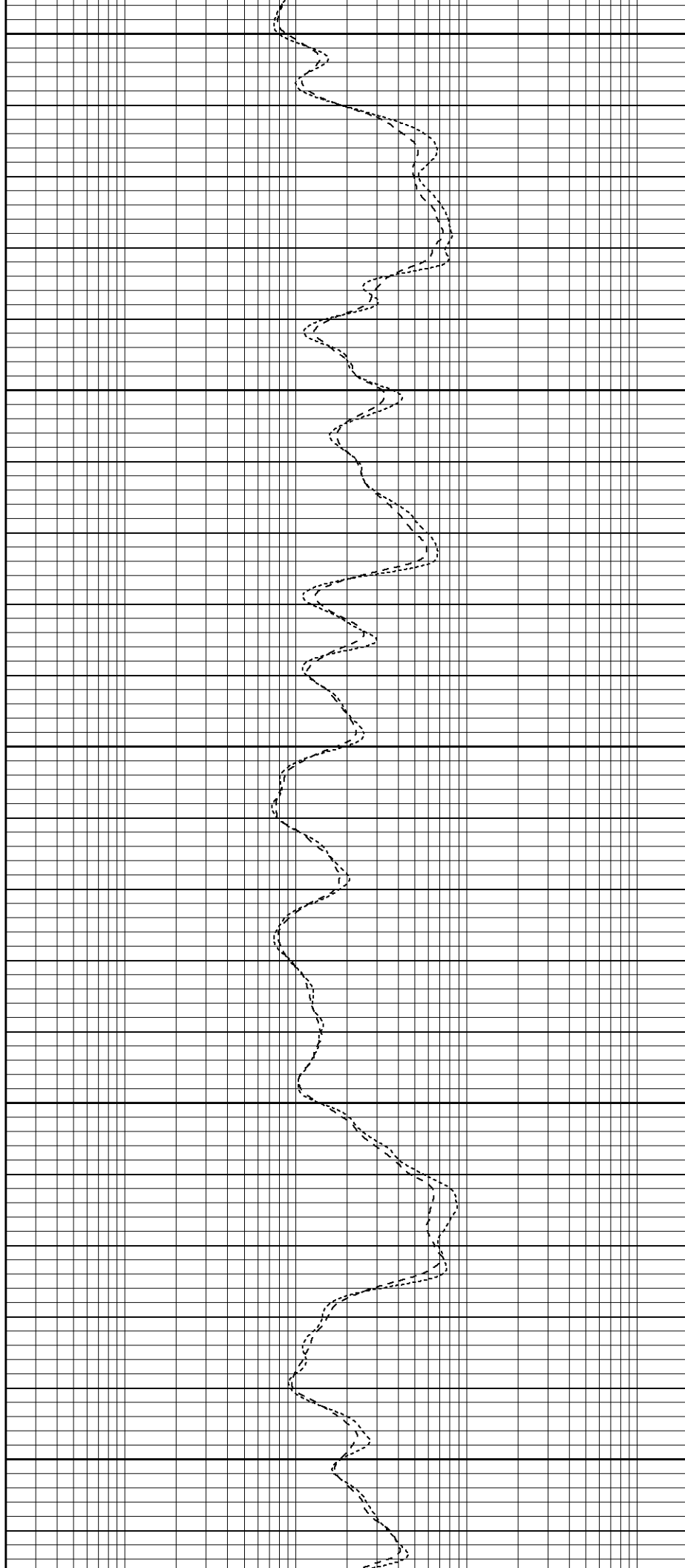
400

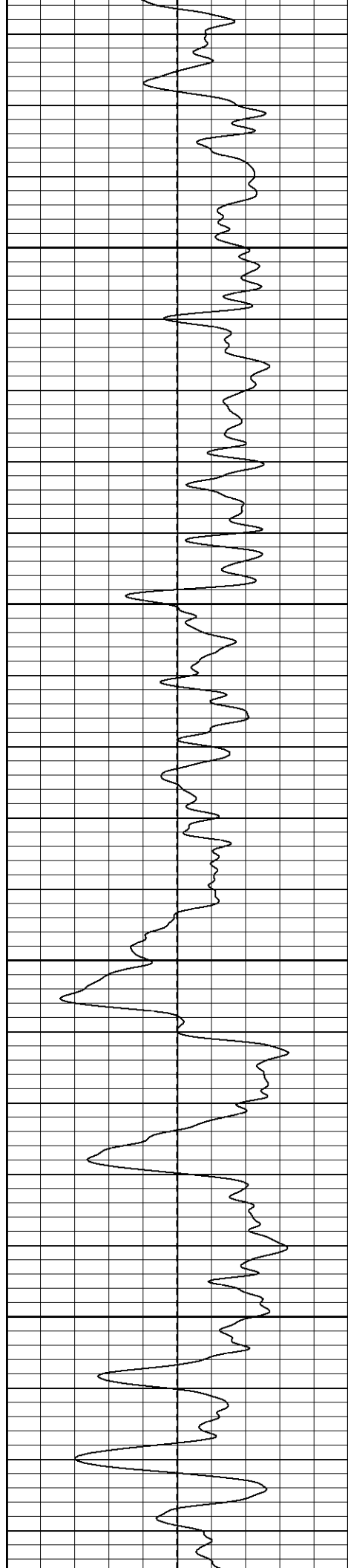
450

500

550

600



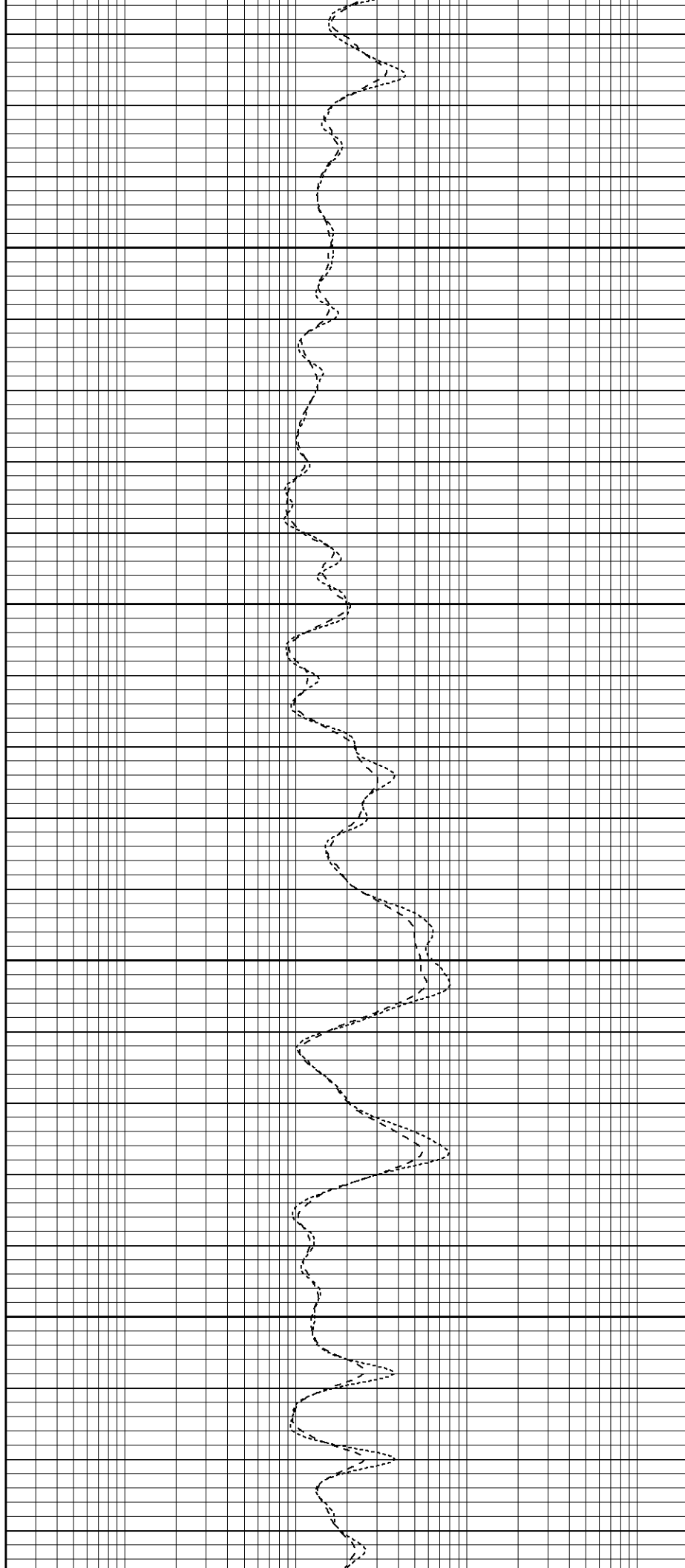


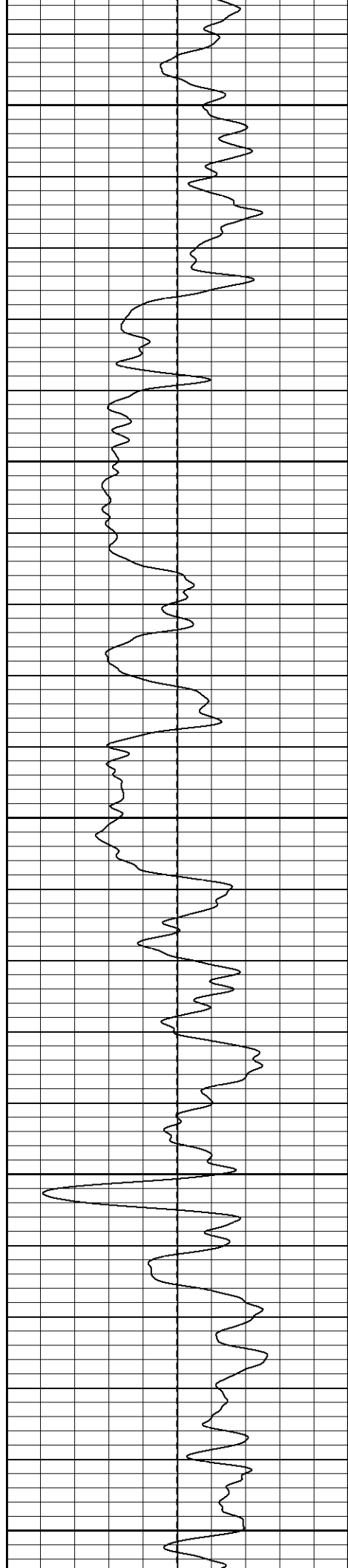
650

700

750

800





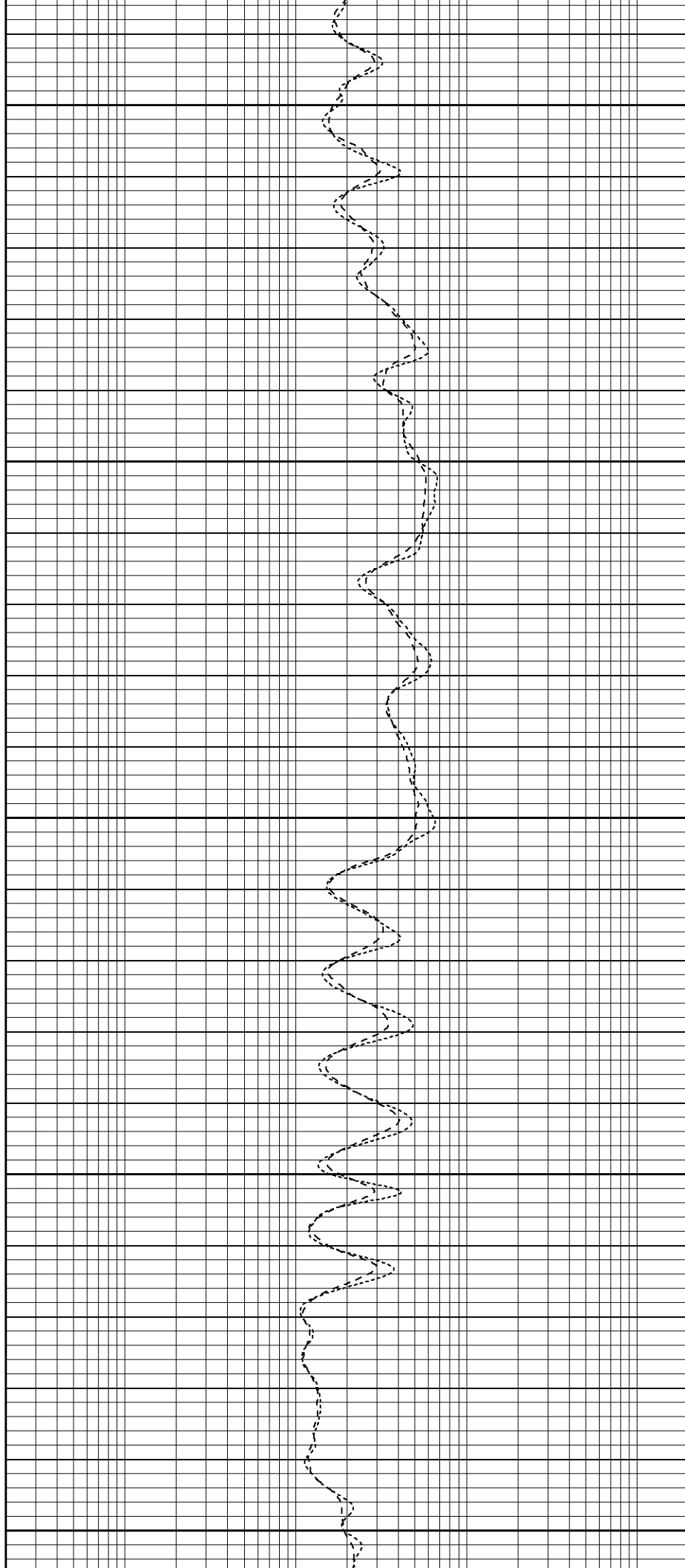
850

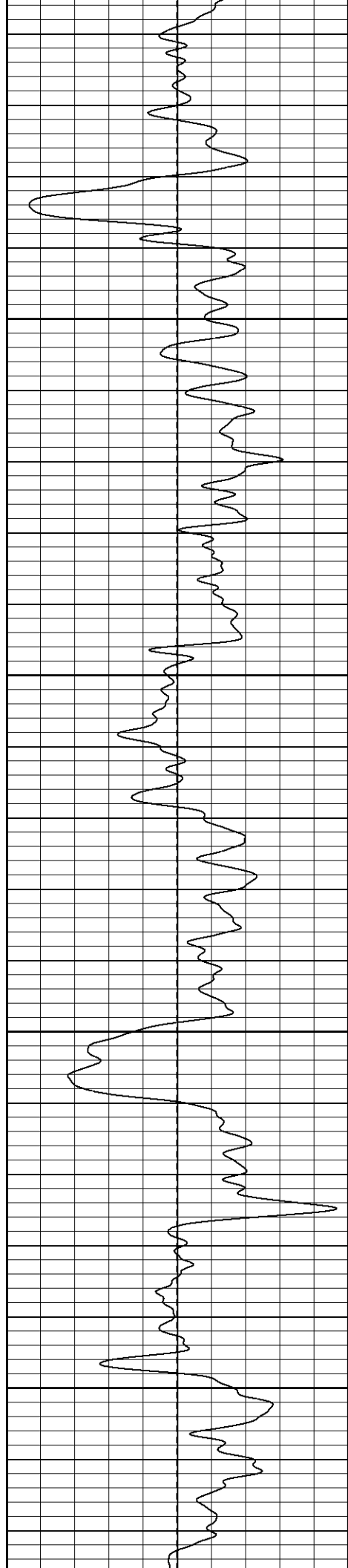
900

950

1000

1050



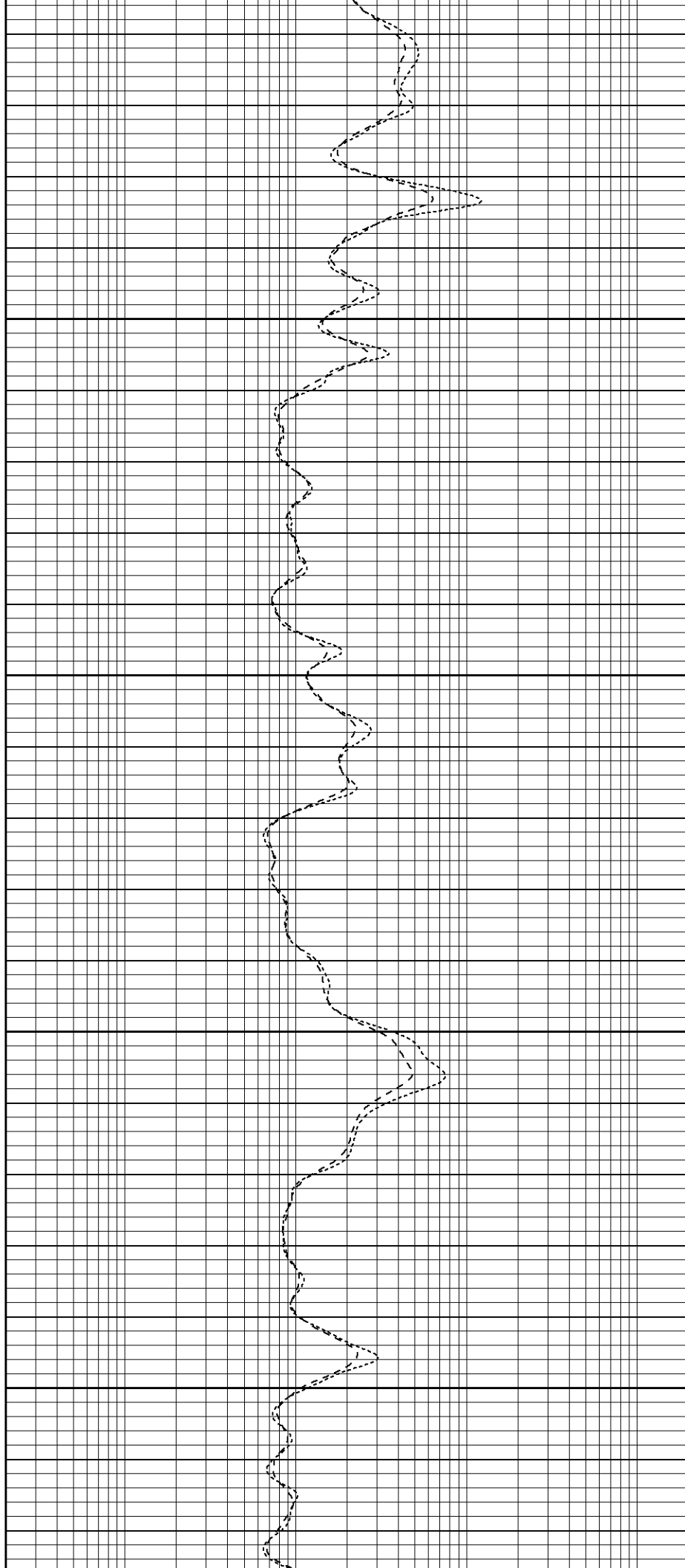


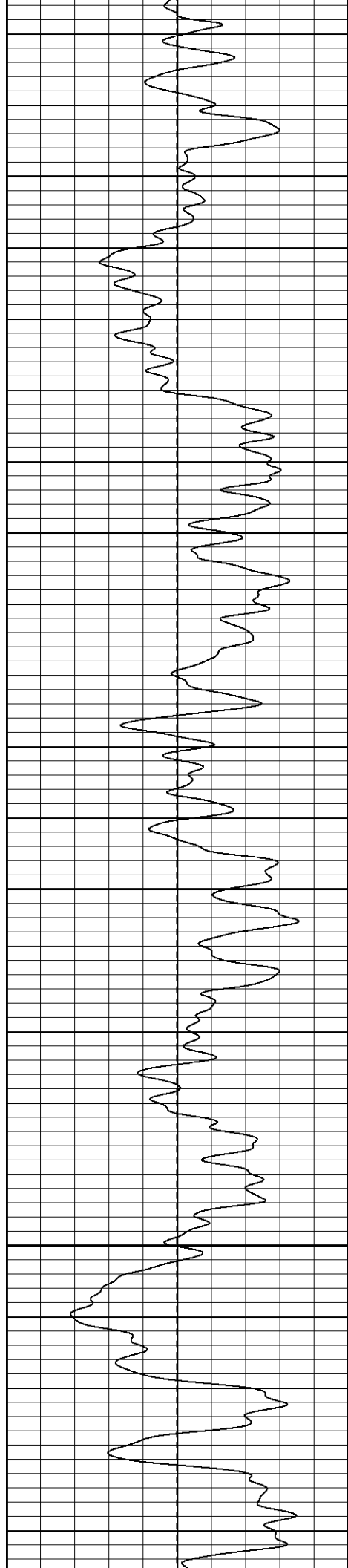
1100

1150

1200

1250



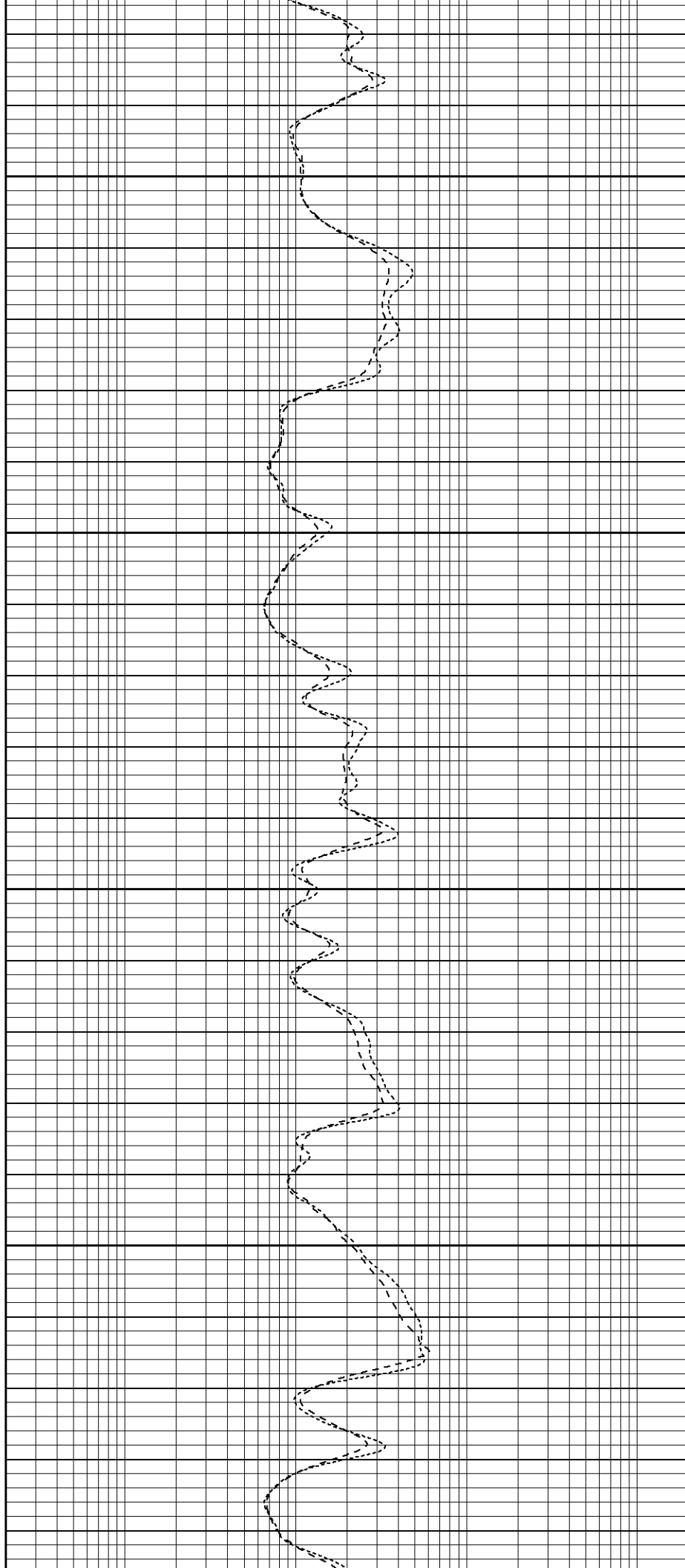


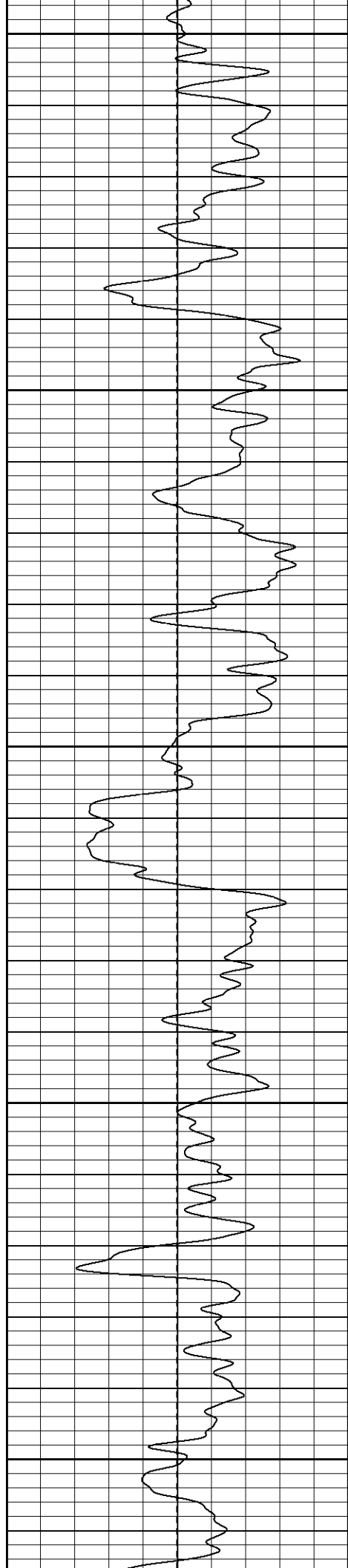
1300

1350

1400

1450





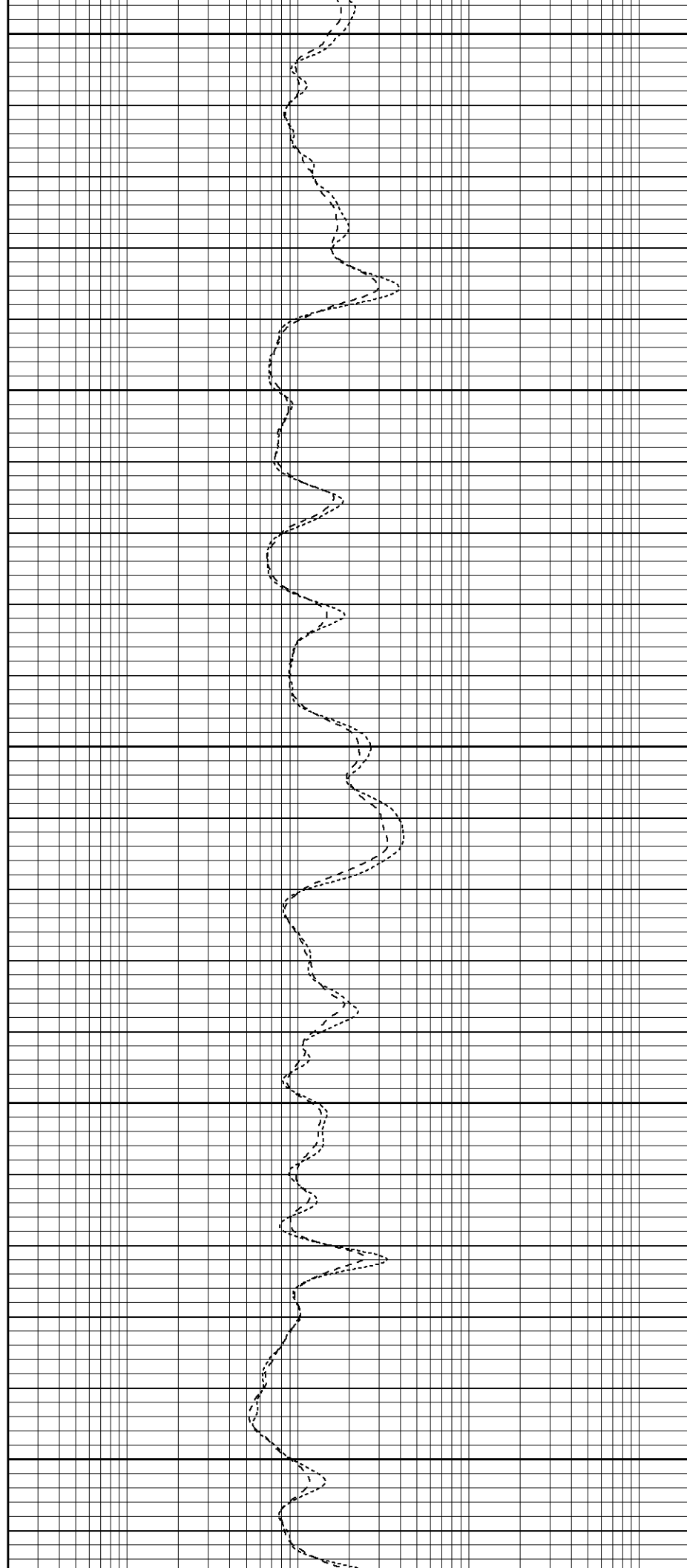
1500

1550

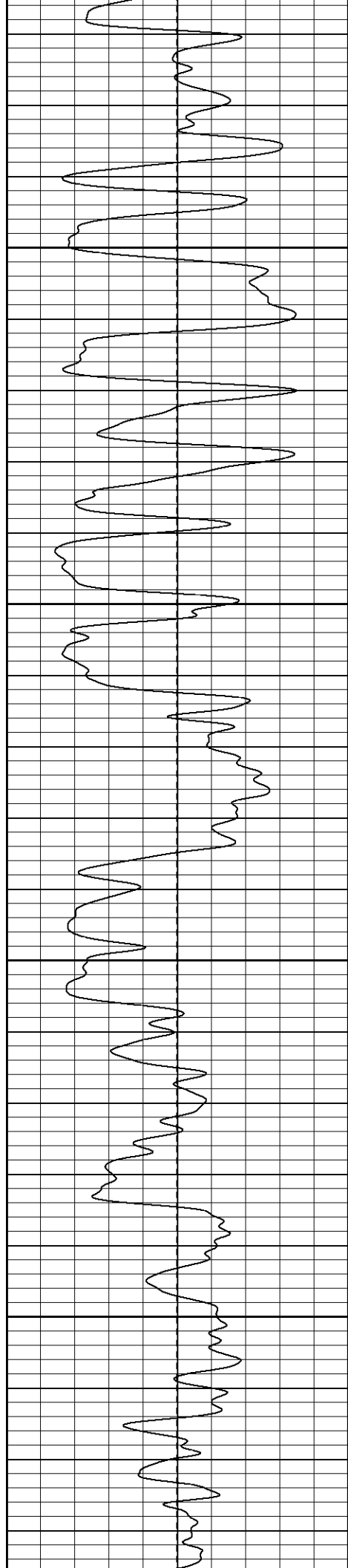
1600

1650

1700





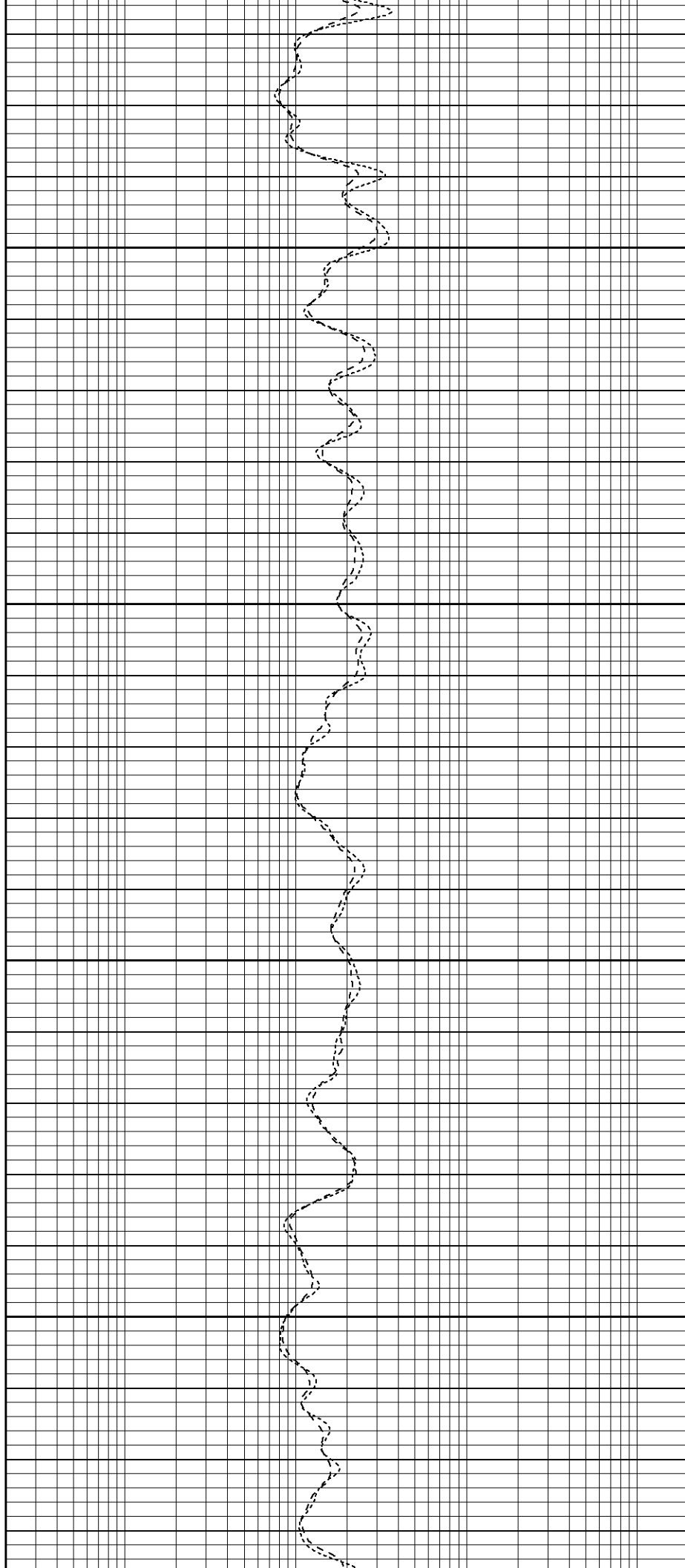


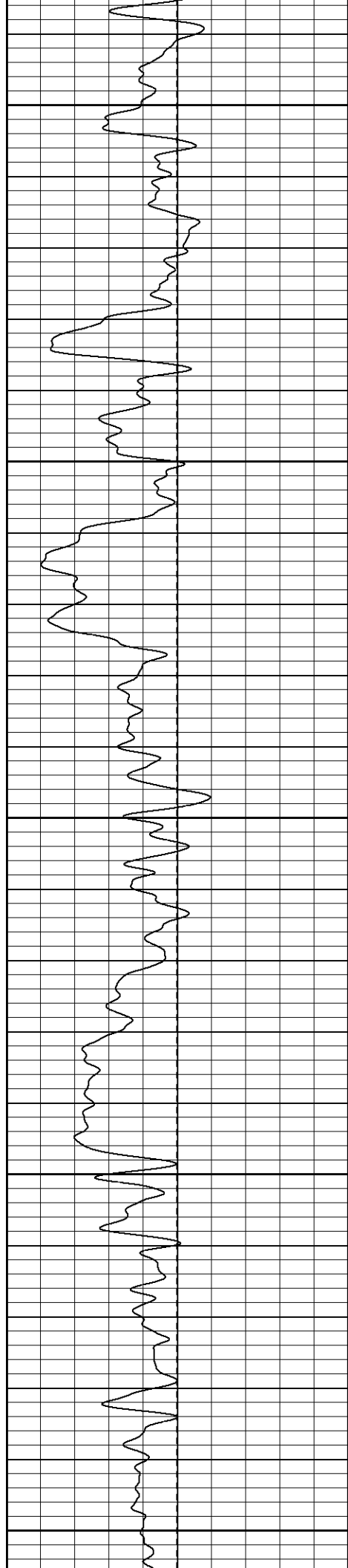
1750

1800

1850

1900





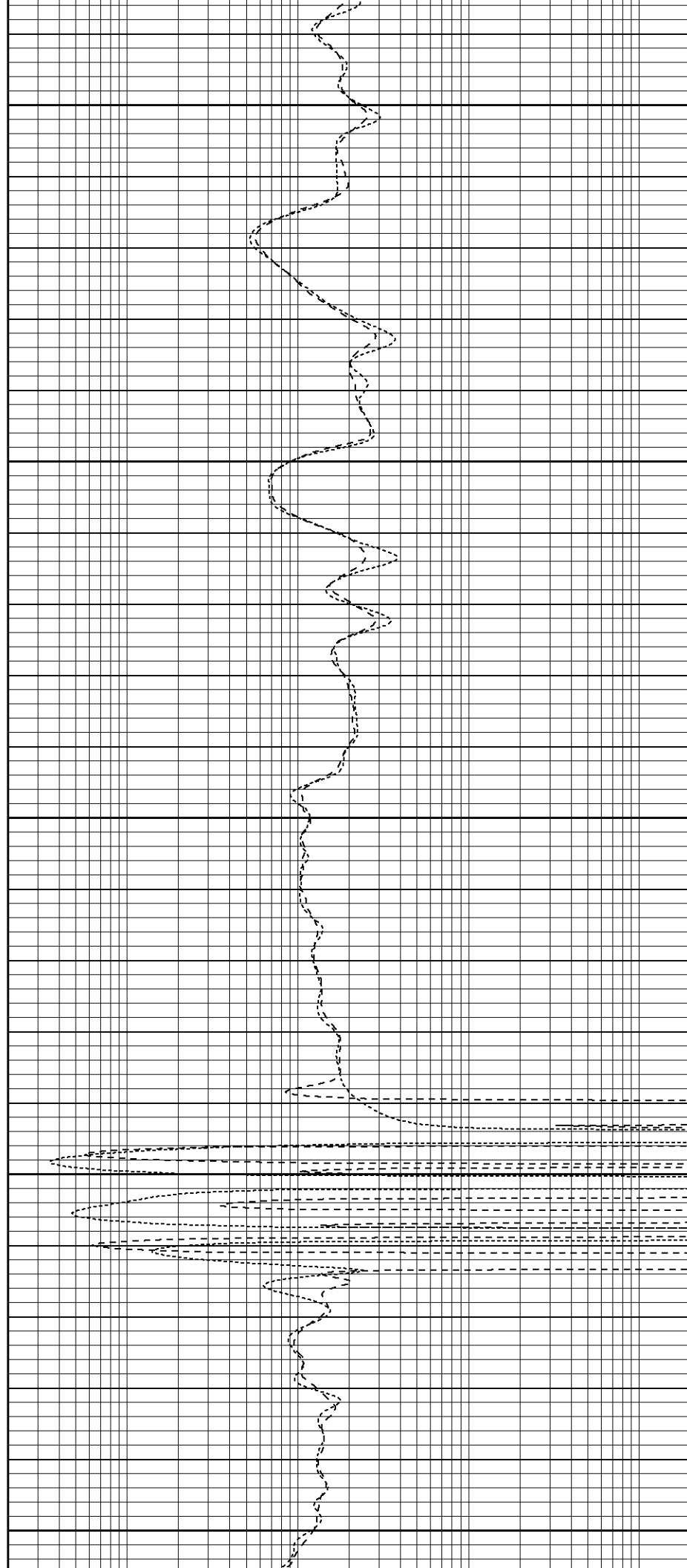
1950

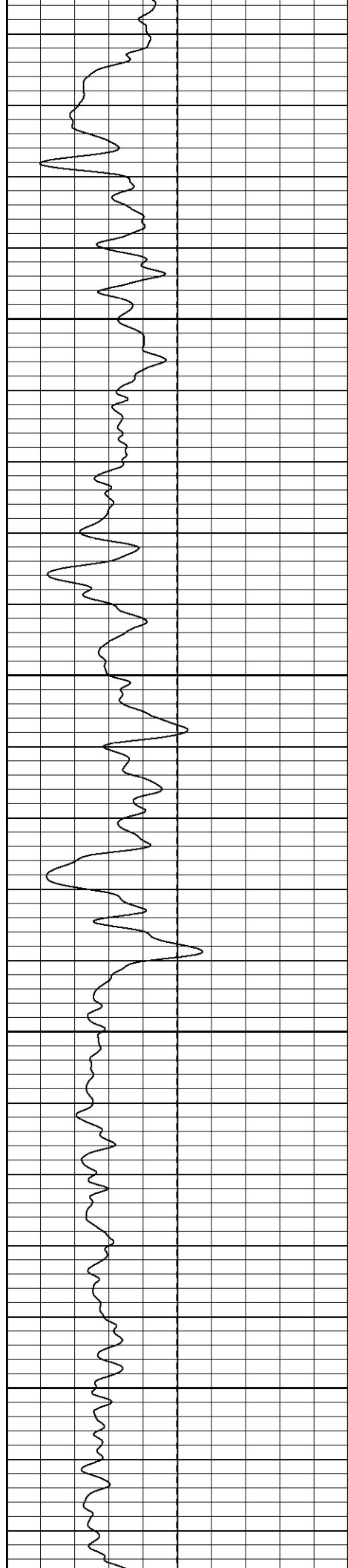
2000

2050

2100

2150



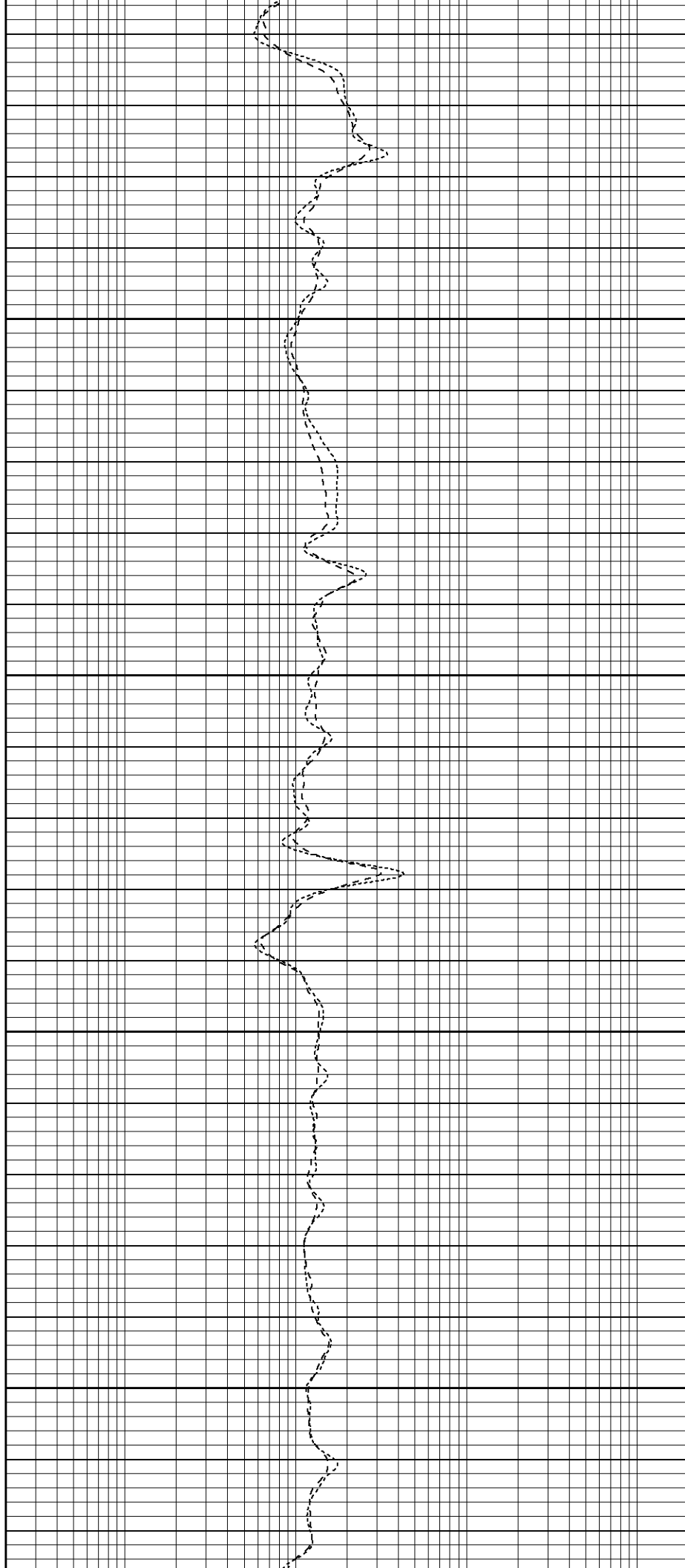


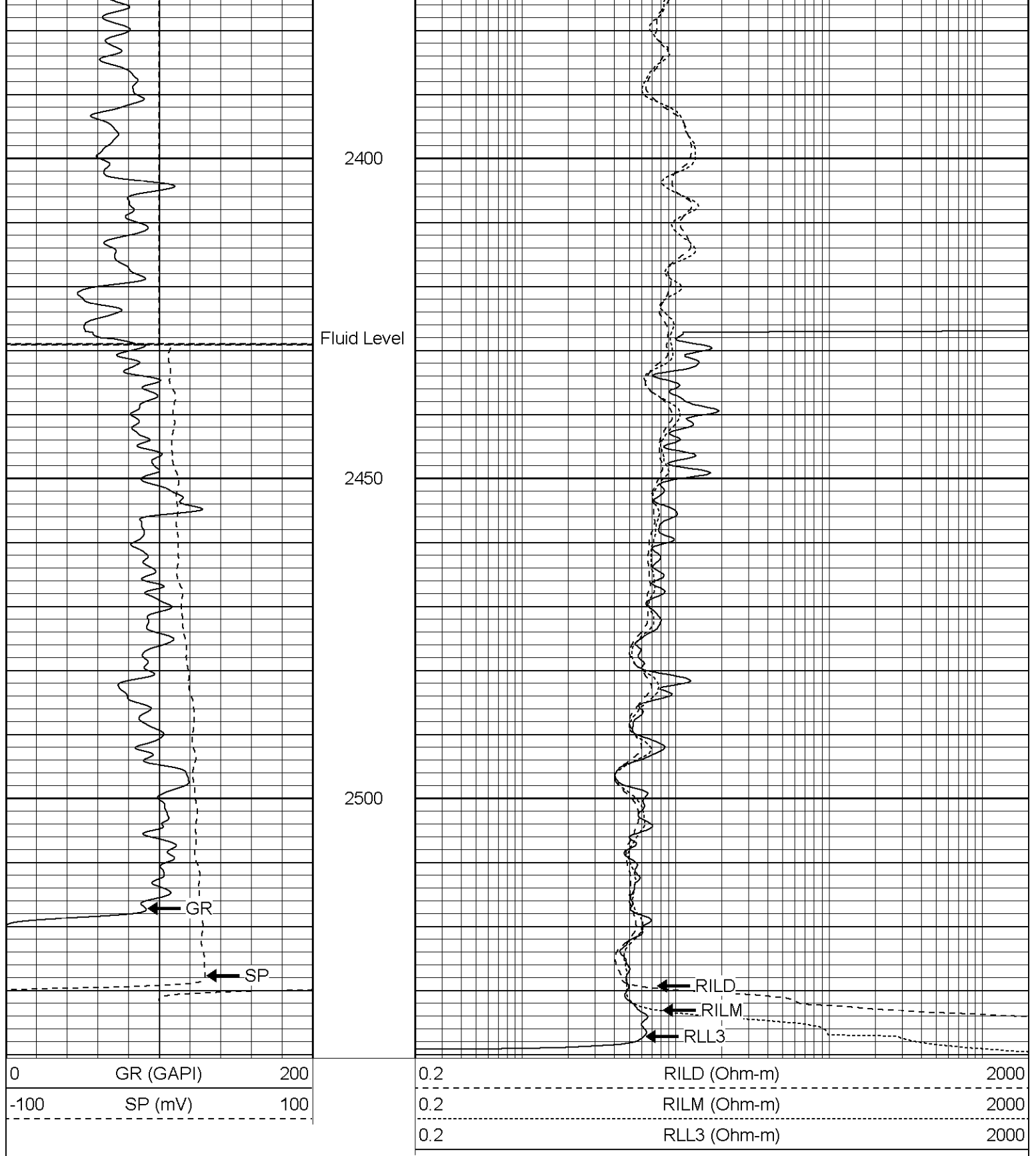
2200

2250

2300

2350

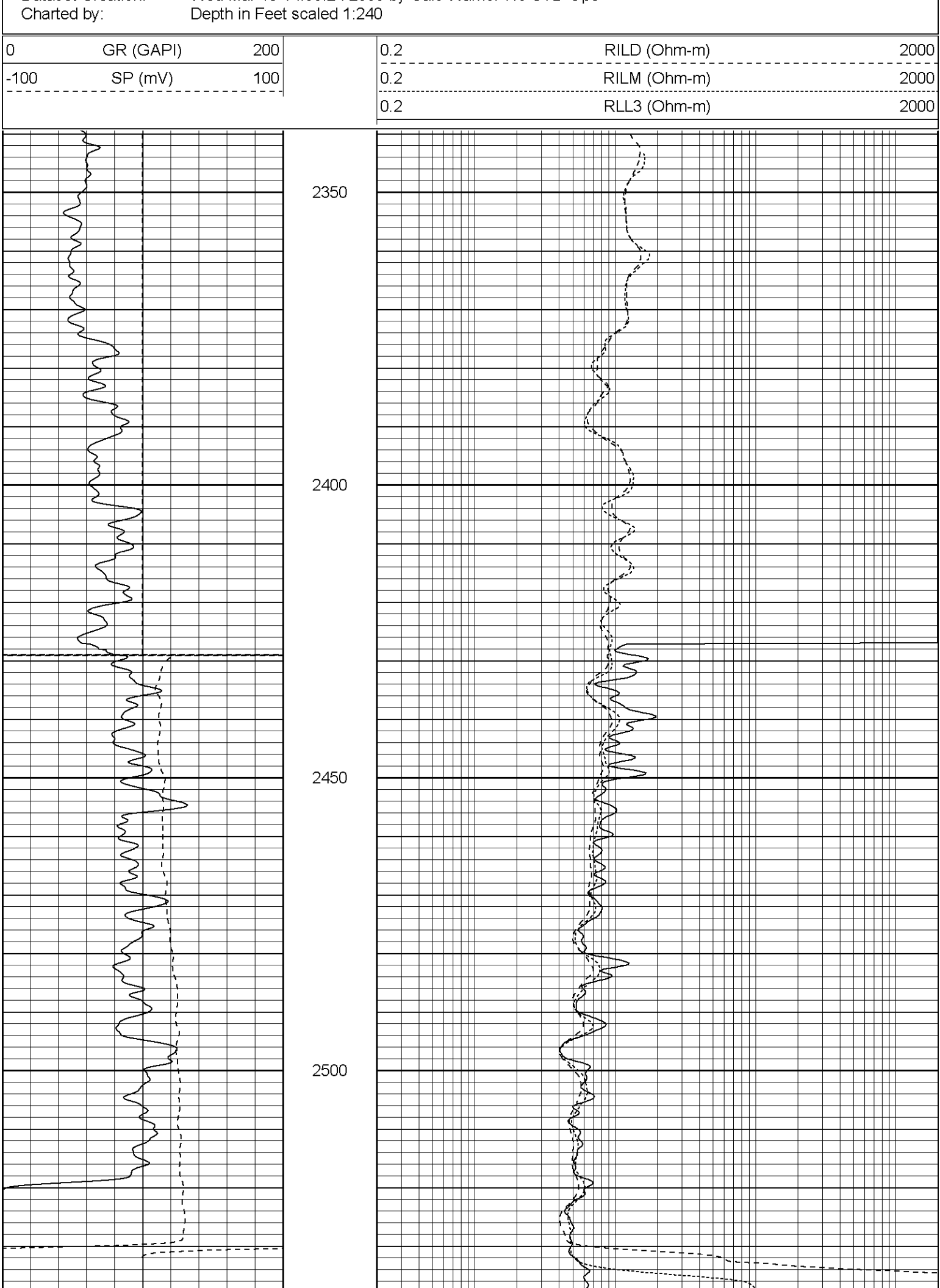




**Patterson**



## Repeat Section

Database File: xtoge2002.db  
Dataset Pathname: pass1.3  
Presentation Format: dil  
Dataset Creation: Wed Mar 15 14:33:24 2006 by Calc Warrior 7.0 STD Ope



0	GR (GAPI)	200	0.2	RILD (Ohm-m)	2000
-100	SP (mV)	100	0.2	RILM (Ohm-m)	2000
			0.2	RLL3 (Ohm-m)	2000

Dual Induction Calibration Report									
Serial-Model:				5375-G					
Surface Cal Performed:				Tue Mar 14 08:51:18 2006					
Downhole Cal Performed:				Wed Mar 15 08:52:07 2006					
Surface Calibration									
			Readings		References			Results	
Loop:	Air	Loop		Air	Loop		m	b	
Deep	-0.001	0.628	V	0.000	400.000	mmho-m	635.667	0.745	
Medium	-0.000	0.743	V	0.000	450.000	mmho-m	605.350	0.273	
Internal:	Zero	Cal		Zero	Cal		m	b	
Deep	-0.001	0.628	V	0.000	500.000	mmho-m	794.977	0.757	
Medium	-0.000	0.743	V	0.000	500.000	mmho-m	672.534	0.320	
Downhole Calibration									
			Readings		References			Results	
Internal:	Zero	Cal		Zero	Cal		m	b	
Deep	0.000	398.743	mmho-m	0.175	499.927	mmho-m	1.200	0.175	
Medium	0.000	449.246	mmho-m	-0.016	500.041	mmho-m	1.250	-0.016	
Shallow	2.507	0.012	V	45.000	2.000	Ohm-m	17.229	-1.000	
Gamma Ray Calibration Report									
Serial Number:			2007						
Tool Model:			HurstIn7						
Performed:			Tue Mar 14 08:52:23 2006						
Calibrator Value:			200.0		GAPI				
Background Reading:			54.0		cps				
Calibrator Reading:			218.0		cps				
Sensitivity:			0.7000		GAPI/cps				

Sensor	Offset (ft)	Schematic	Description	Len (ft)	OD (in)	Wt (lb)
GR	21.75		GR-HurstIn7 (2007)	2.96	3.25	40.00
CILD	10.60		DIL -G (5375)	20.83	4.00	345.00

SP	10.60		DILS (5075)	23.79	1.00	345.00
CILM	6.89					
RLL3	1.70					

Dataset: /field/well/run/\_plots/\_jobs\_/dilrevised

Total Length: 23.79 ft

Total Weight: 385.00 lb

O.D. 4.00 in