

# BLANCO

Geological Services LLC

Scale 1:240 (5"=100') Imperial

Well Name: Stae Wildlife 32-16Tr  
Location: SW/NE Sec 16 T32S R66W  
Licence Number: 05-071-08568-00  
Spud Date: 11/12/05  
Surface Coordinates: 1838' FNL 1850' FEL

Las Animas County  
Region: Purgatoire River  
Drilling Completed: 11/13/05

## Bottom Hole Coordinates:

Ground Elevation (ft): 7594'      K.B. Elevation (ft): 7600'  
Logged Interval (ft): 285'      To: 1930'      Total Depth (ft): 1930'  
Formation: Raton  
Type of Drilling Fluid: Air / Mist

Printed by STRIP.LOG from WellSight Systems 1-800-447-1534 [www.WellSight.com](http://www.WellSight.com)

## OPERATOR

Company: Pioneer Natural Resources USA, Inc.  
Address: 1401 17th Street Suite 1200  
Denver CO 80202

## GEOLOGIST

Name: Kritopher Alworth/Joaquin Gonzales  
Company: BLANCO Geological Services LLC  
Address: 806 Robinson  
Trinidad CO 81082  
(719) 846-3364


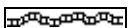
## Rig



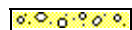

PWS Drilling Rig #33





## Comments

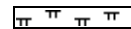



8 5/8" #24 Surface Casing set to 340'





## ROCK TYPES

 Anhy  
 Bent  
 Brec  
 Cht

 Clyst  
 Coal  
 Congl  
 Dol

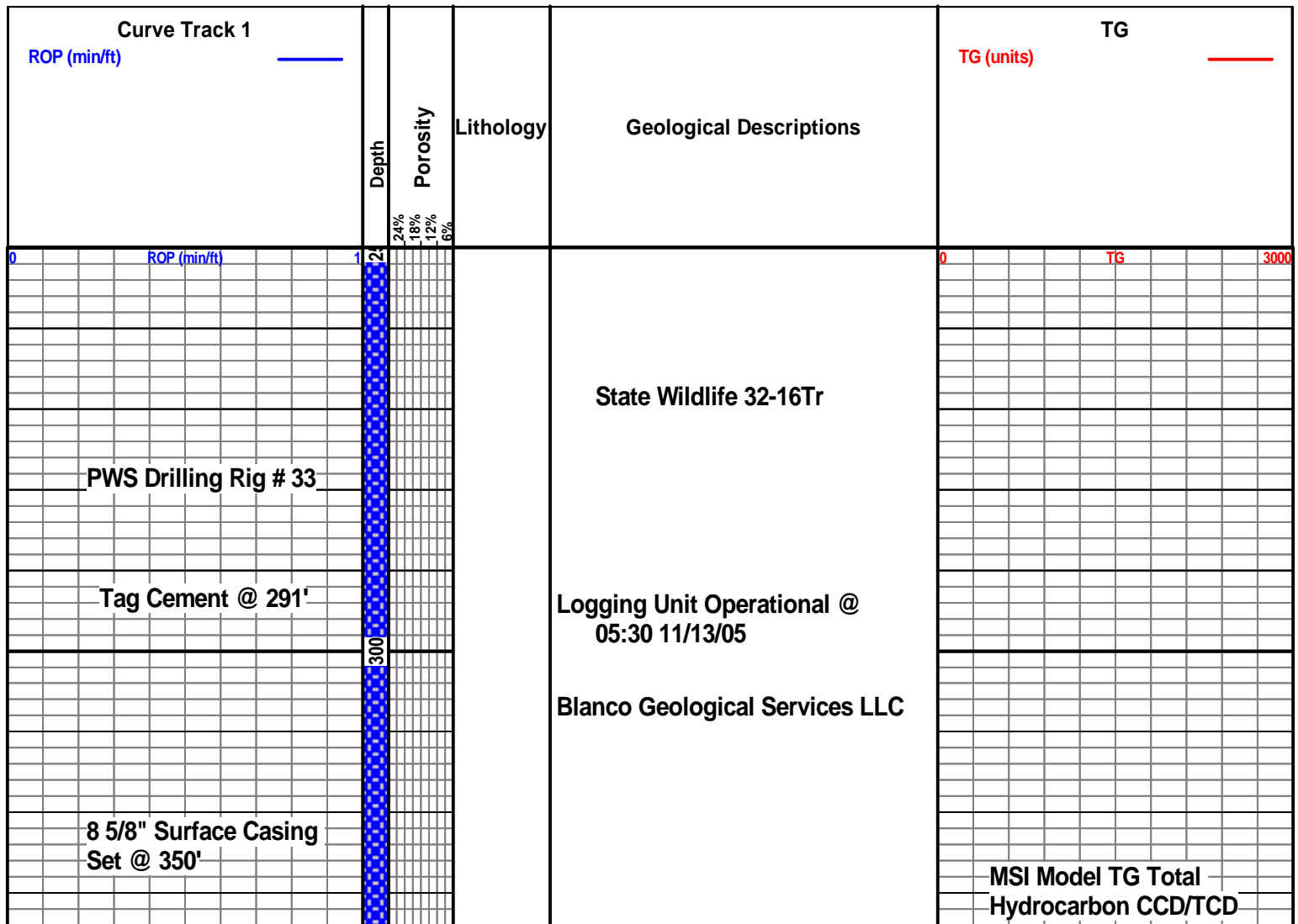
 Gyp  
 Igne  
 Lmst  
 Meta

 Mrlst  
 Salt  
 Shale  
 Shcol

 Shgy  
 Sltst  
 Ss  
 Till

<b>BS</b>	<b>Boundst</b>
<b>C</b>	<b>Chalky</b>
<b>CX</b>	<b>CryxIn</b>
<b>E</b>	<b>Earthy</b>
<b>FX</b>	<b>FinexIn</b>
<b>GS</b>	<b>Grainst</b>
<b>L</b>	<b>Lithogr</b>
<b>MX</b>	<b>MicroxIn</b>
<b>MS</b>	<b>Mudst</b>
<b>PS</b>	<b>Packst</b>
<b>WS</b>	<b>Wackest</b>

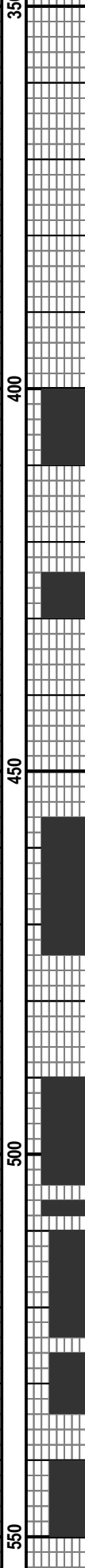
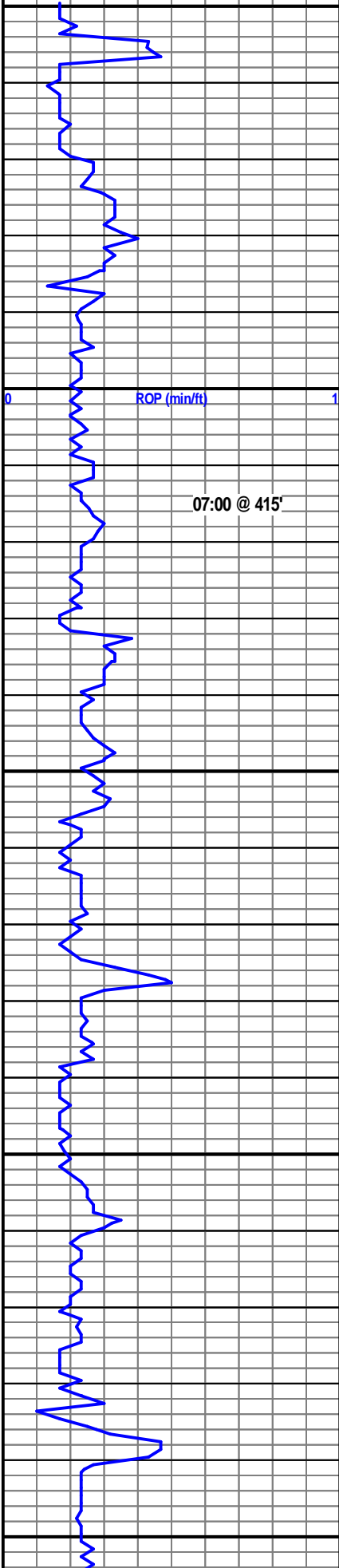
Rft  
Sidewall  
Srftcsg



06:24 11/13/2005  
Drilling New Formation  
from 351' w/ Air Hammer

Began Sampling @ 385'

TG Scale 0 - 3000 units



Poison Canyon Formation

SILTSTONE, drk gry-gry, indurated, blocky, gritty, dull

SANDSTONE, clr white, vcg-cg, sub-angular-sub rounded, poorly sorted, unconsolidated, mildly calcareous

SILTSTONE, gry-brwn, indurated, blocky, gritty, dull

SANDSTONE, clr-white, vcg-mg, sub-angular, poorly sortedmod-consolidated, mildly calcareous

SILTSTONE, gry-brwn, indurated, blocky, gritty, dull, SANDSTONE INTERBEDDED

SANDSTONE, clr-white, vcg-mg, sub-angular, poorly sortedmod-consolidated, mildly calcareous, SILTSTONE STRINGERS

SILTSTONE, gry-brwn, indurated, blocky, gritty, dull, SANDSTONE INTERBEDDED

SANDSTONE, clr-white, vcg-mg, sub-angular, poorly sortedmod-consolidated, mildly calcareous, CALCITE, SILTSTONE STRINGERS

SANDSTONE, clr-white, vcg-mg, sub-angular, poorly sortedmod-consolidated, mildly calcareous, CALCITE, PYRITE, SILTSTONE STRINGERS

SILTSTONE, gry-brwn, indurated, sub blocky sub platy, mod smooth, dull

SANDSTONE, clr-white, vcg-mg, sub-angular, poorly sortedmod-consolidated, mildly calcareous, CALCITE, PYRITE, SILTSTONE STRINGERS

CG

CG

CG

CG

CG

CG

CG

0 TG 3000

