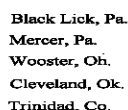




Cleveland, Ok.  
Trinidad, Co.

Company XTO Energy Inc.  
Well Golden Eagle 30-03  
Field Purgatorie River  
County Las Animas  
State CO

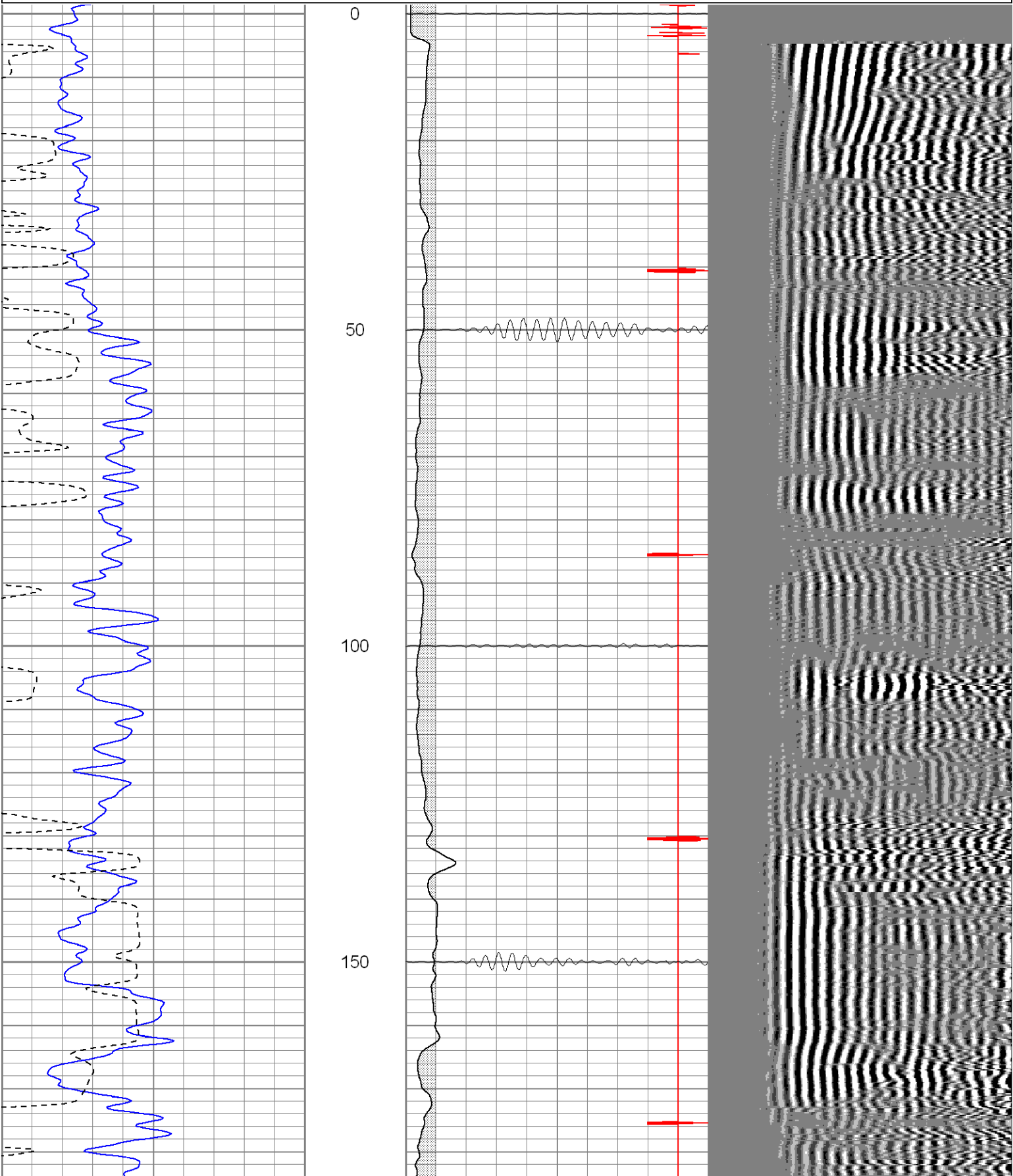
Second Bosque entrance four miles after Weston,  
right on Apache Canyon, third drive thru location.

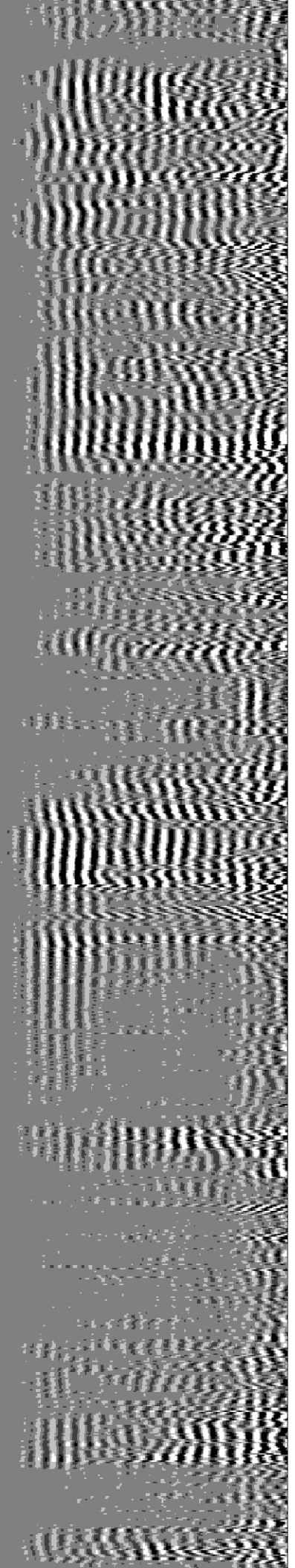
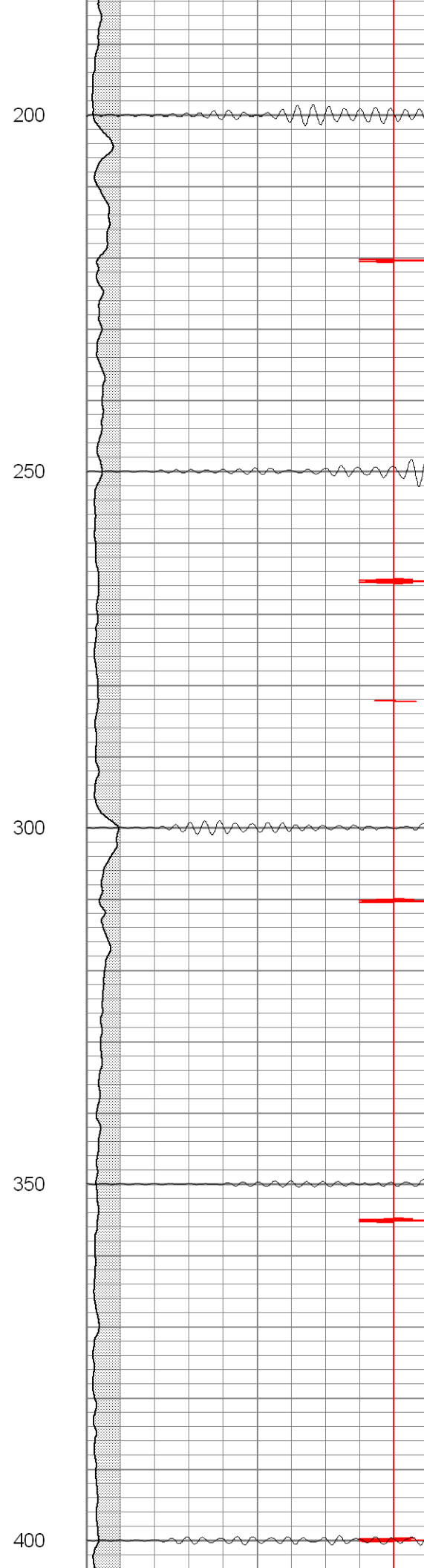
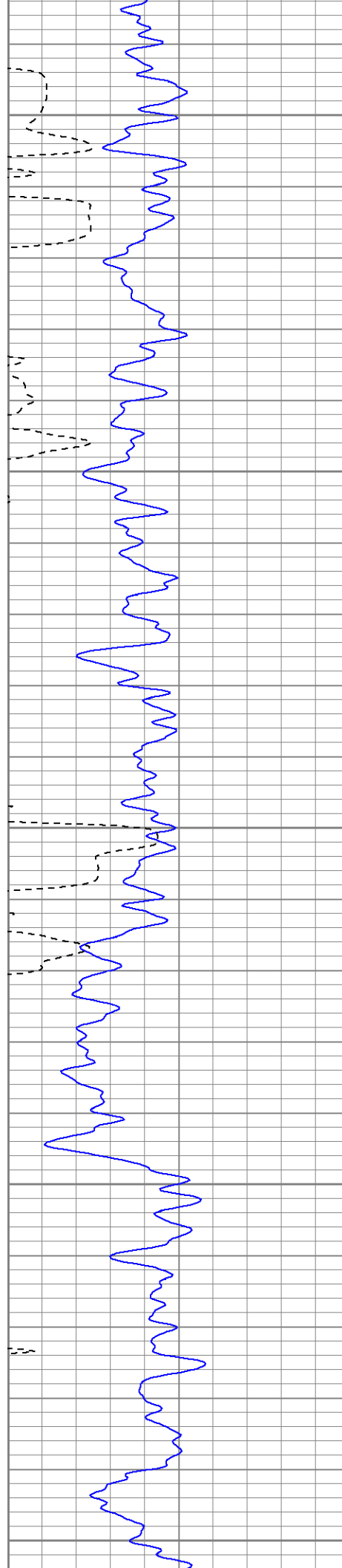


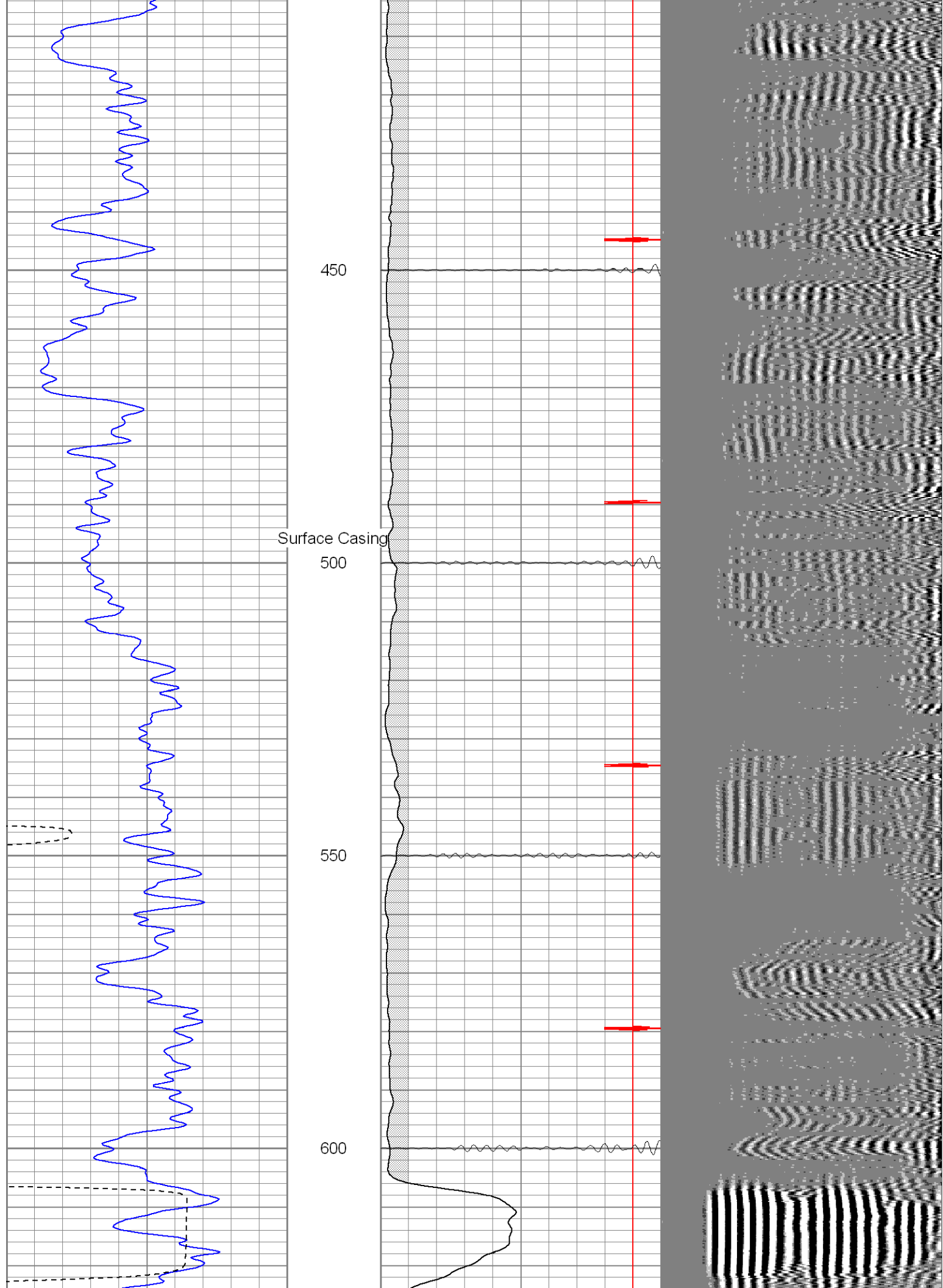
# Main Pass

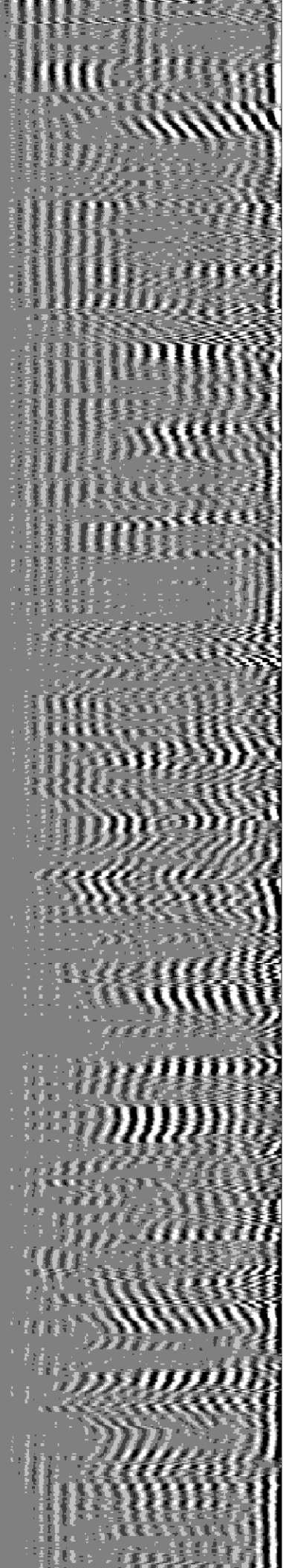
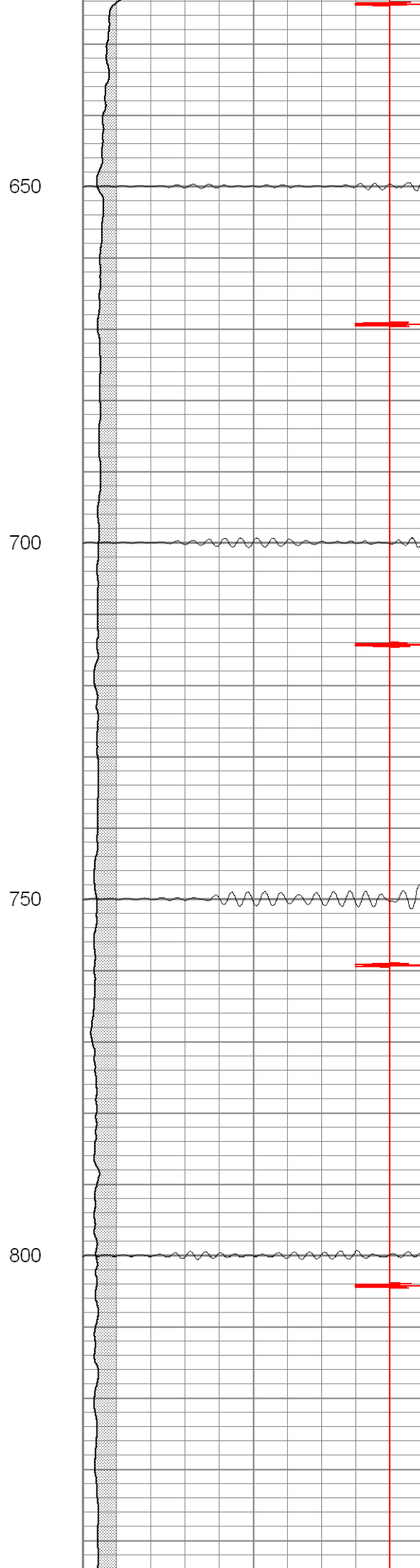
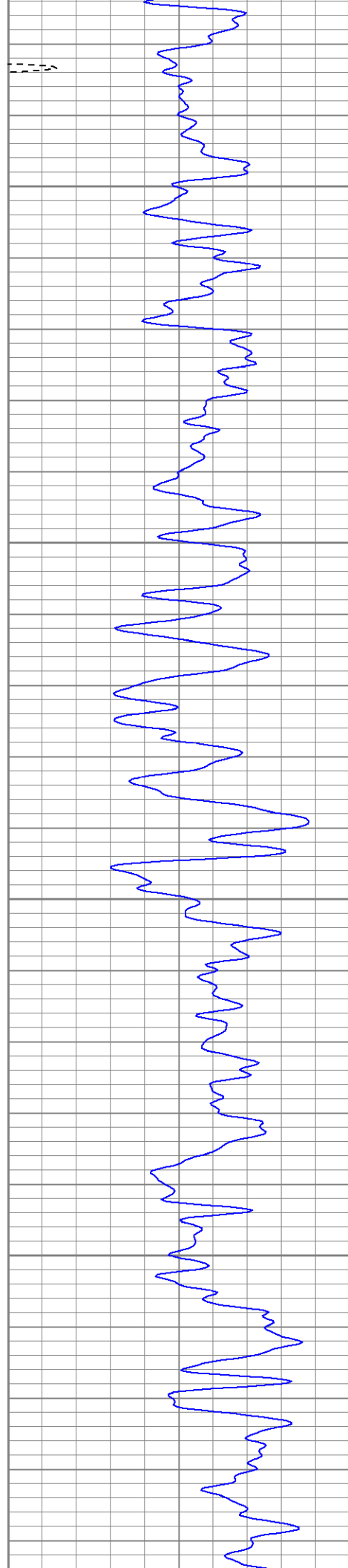
Database File: xtoge30-03b011008.db  
Dataset Pathname: pass2  
Presentation Format: cblrt  
Dataset Creation: Thu Jan 10 08:51:29 2008 by Log Std Casedhole 07051  
Charted by: Depth in Feet scaled 1:240

0	GR (GAPI)	200	0	AMP3 (mV)	100	200	CBL5	1200
400	TT3 (usec)	200	18	CCL	-2			
			200	CBL5	1200			

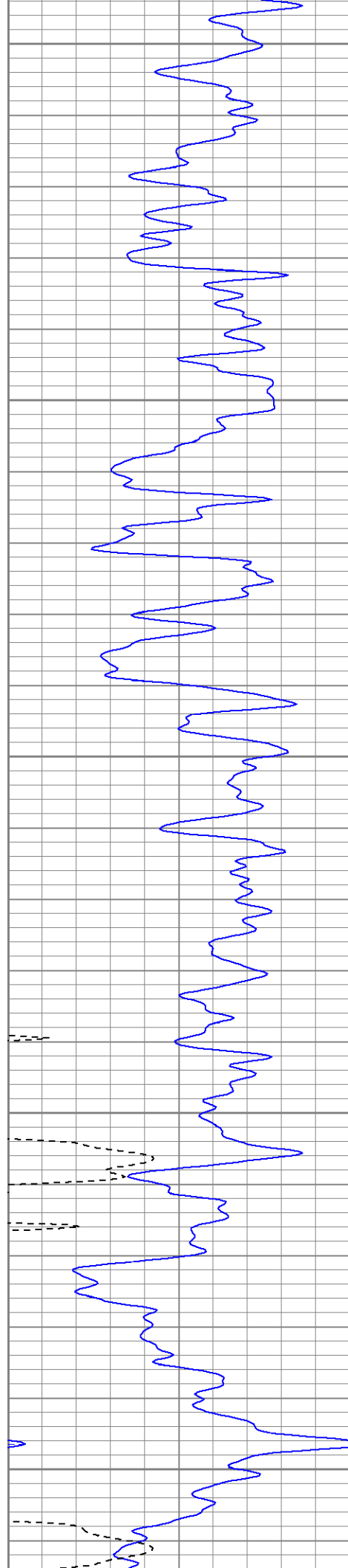












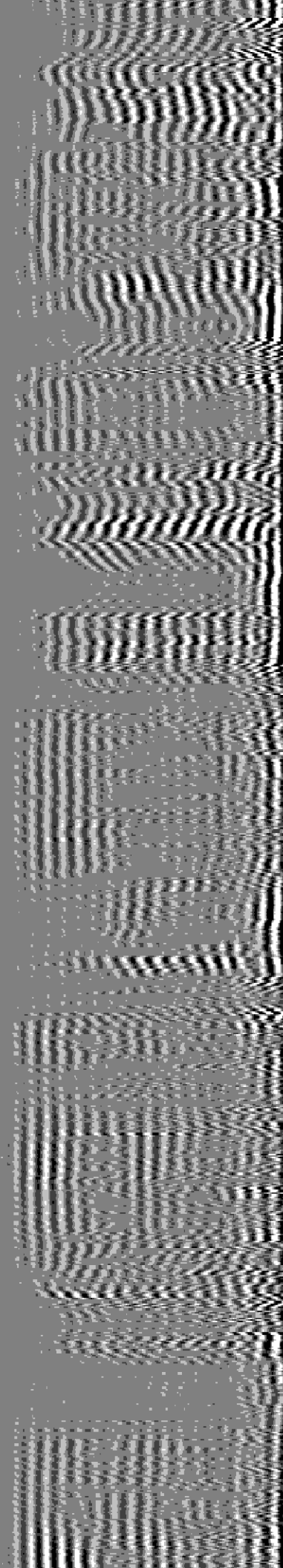
850

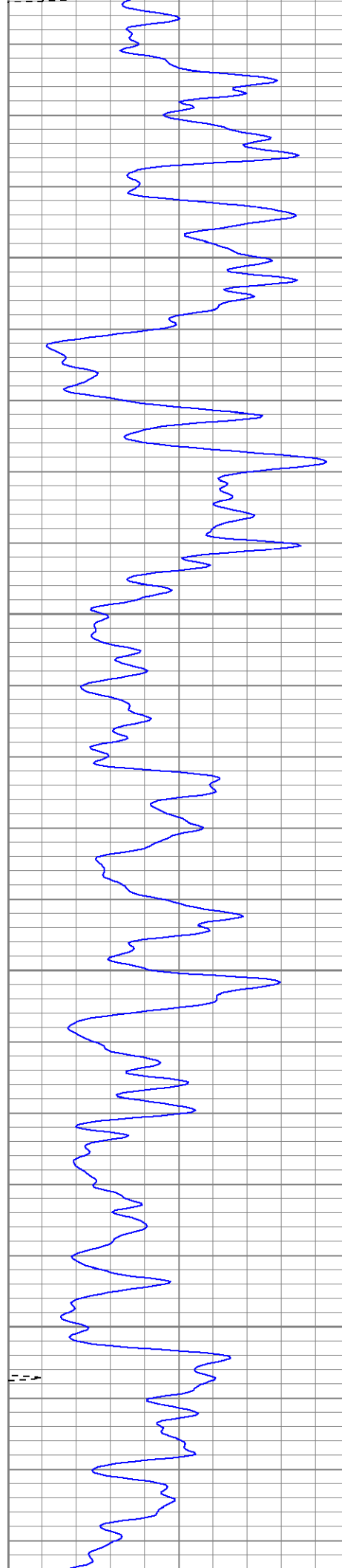
900

950

1000

1050



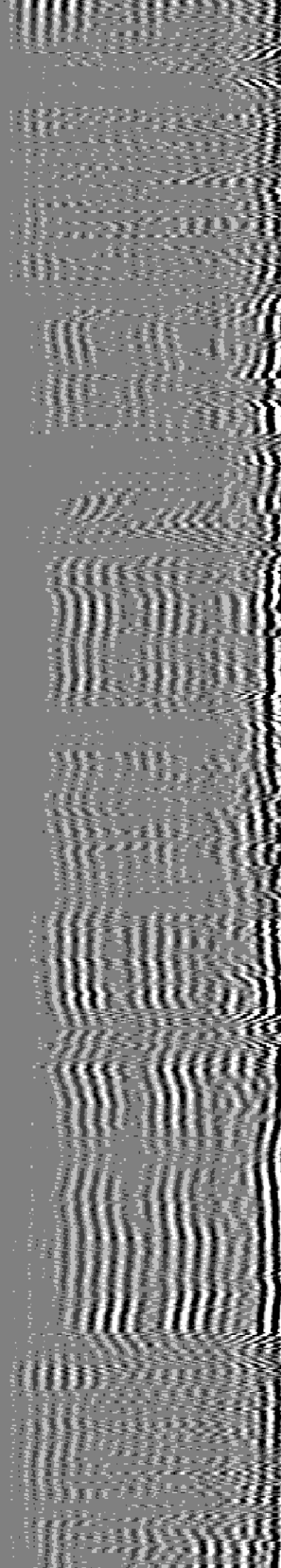
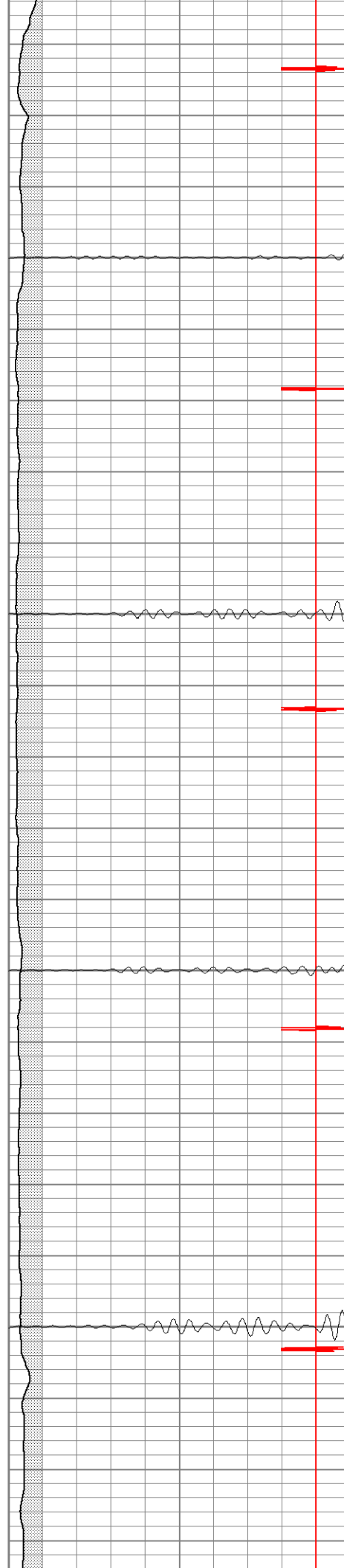


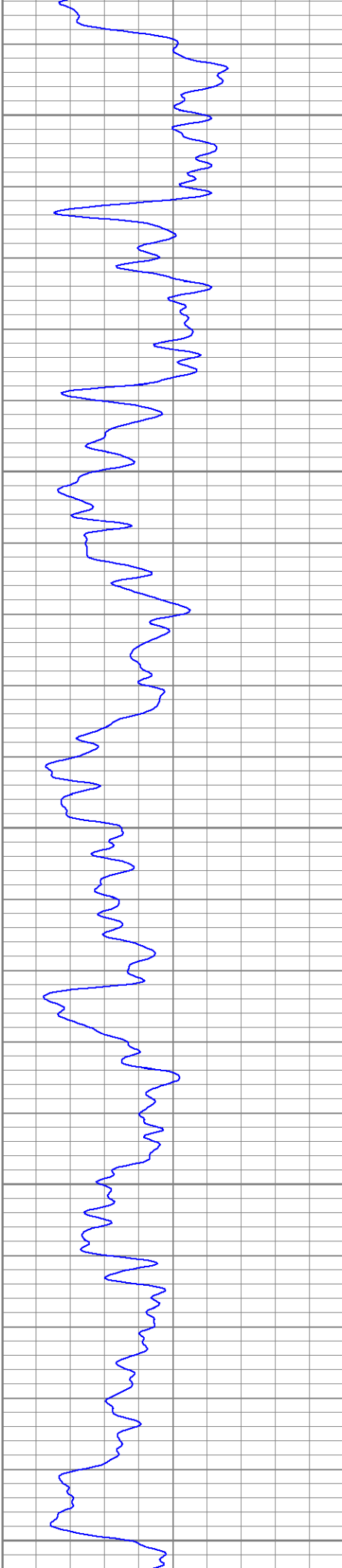
1100

1150

1200

1250





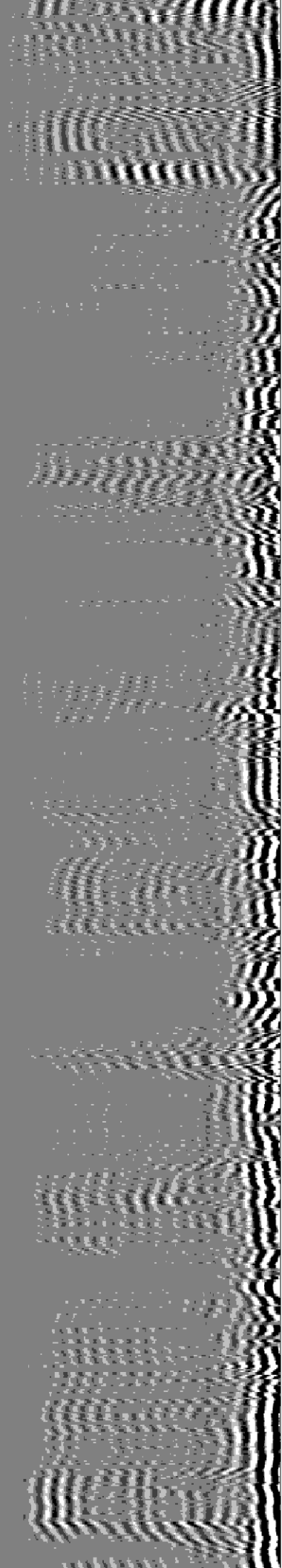
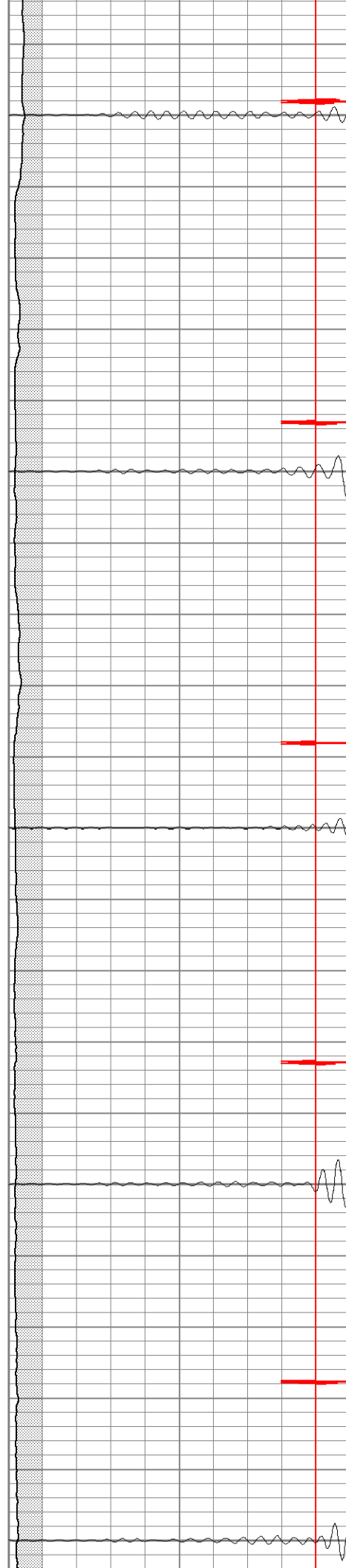
1300

1350

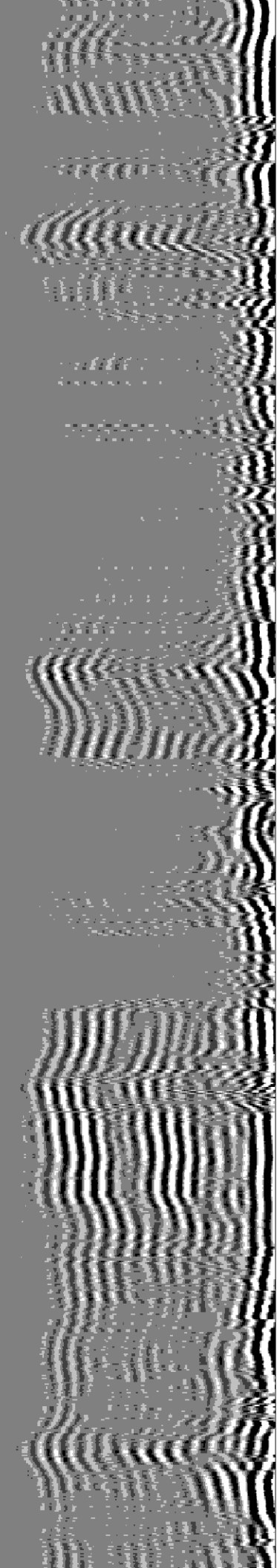
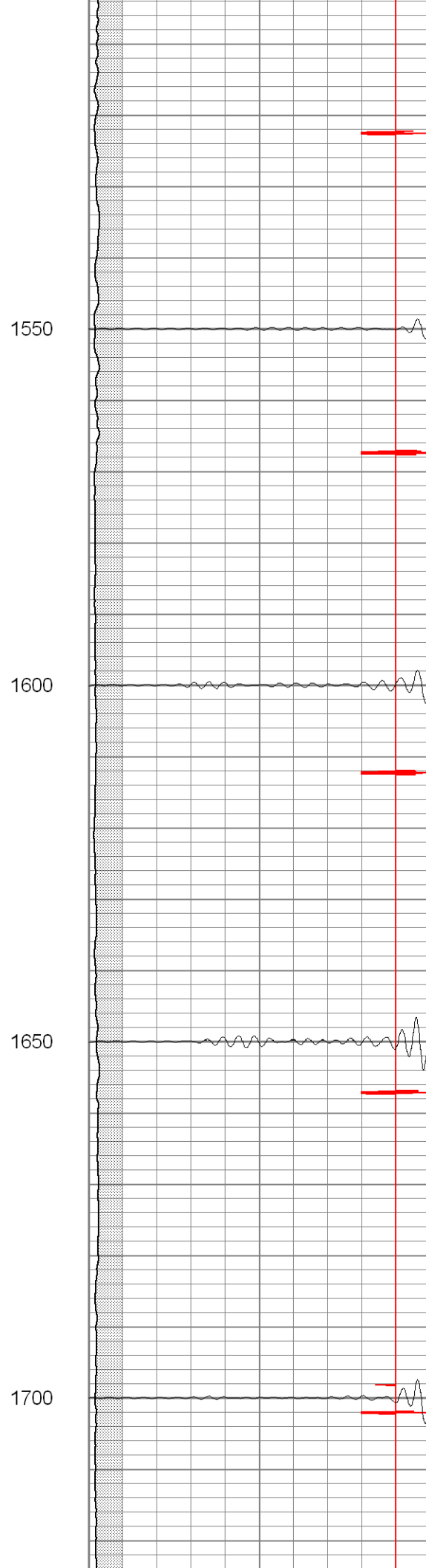
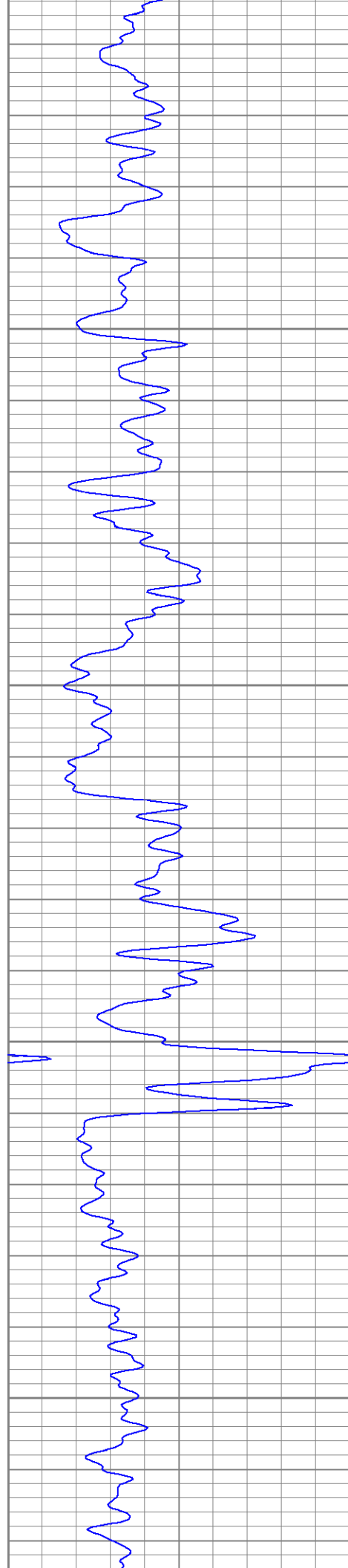
1400

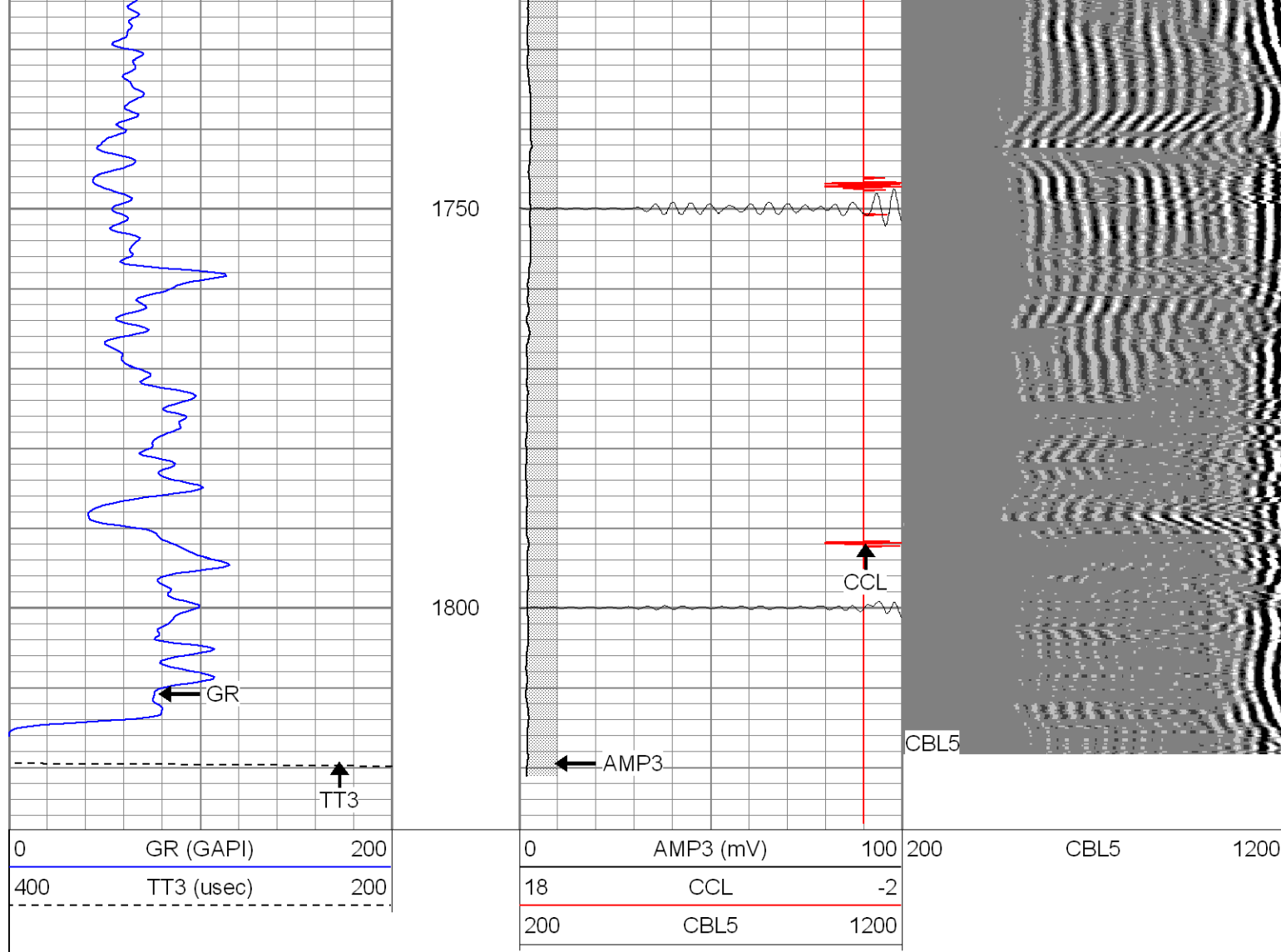
1450

1500







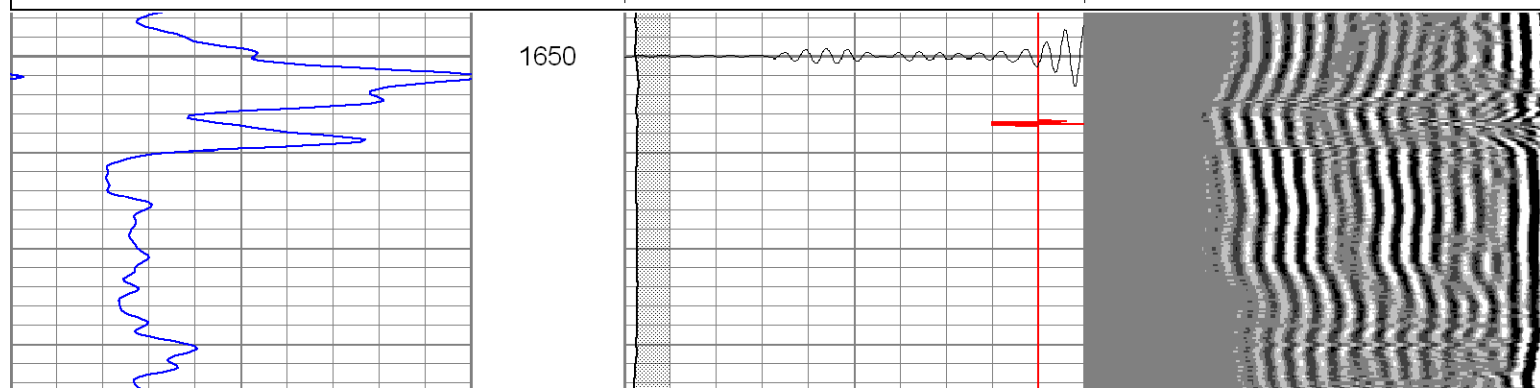
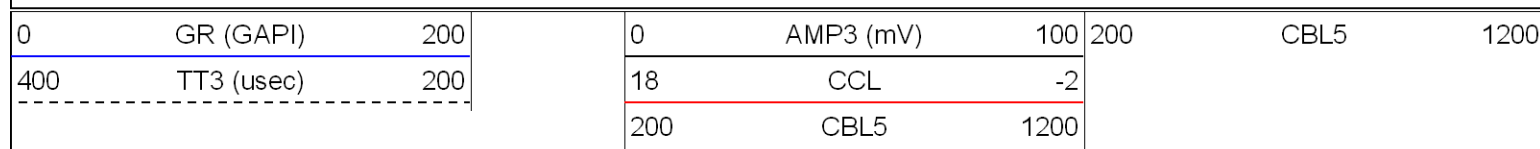


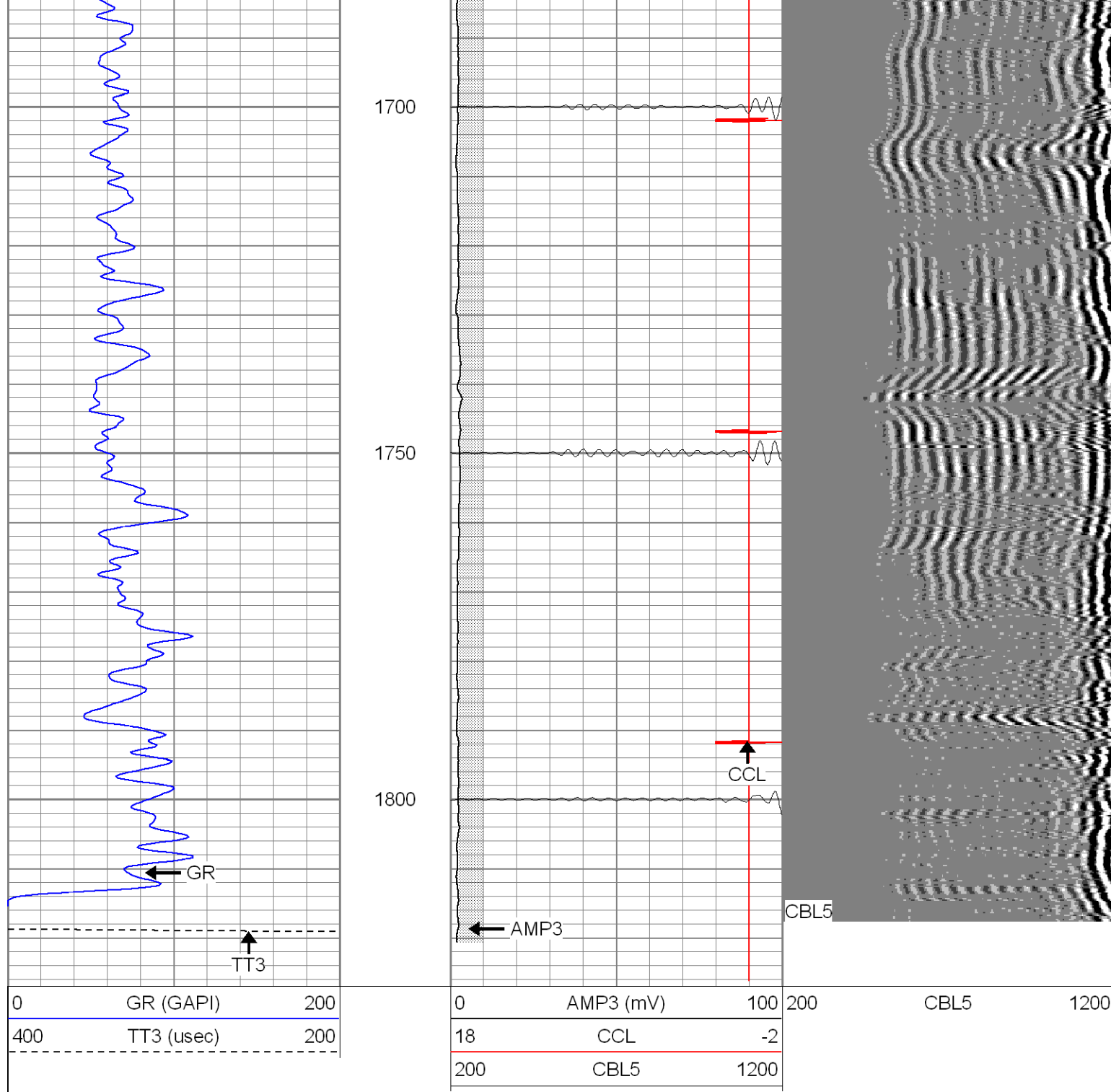
**SUPERIOR**

Black Lick, Pa.  
Mercer, Pa.  
Wooster, Oh.  
Cleveland, Ok.  
Trinidad, Co.

# Repeat Section

Database File: xtoge30-03b011008.db  
Dataset Pathname: pass1  
Presentation Format: cblrt  
Dataset Creation: Thu Jan 10 08:44:05 2008 by Log Std Casedhole 07051  
Charted by: Depth in Feet scaled 1:240





Calibration Report			
Database File:	xtoge30-03b011008.db		
Dataset Pathname:	pass1		
Dataset Creation:	Thu Jan 10 08:44:05 2008 by Log Std Casedhole 07051		
Cement Bond Log Calibration Report			
Serial Number:	Titan2		
Tool Model:	T2		
Performed:	Thu Jan 10 08:36:58 2008		
Depth:	371.336	ft	
Casing Diameter:	5.5	in	
	3' Spacing	5' Spacing	
Signal Zero:	0	0	mV

Calibrated Amplitude:	85	85	mV
Reading at Signal Zero:	-0.04	-0.03	V
Reading in Free Pipe:	1.75	1.6	V
Gain:	47.486	52.1472	
Offset:	1.89944	1.56442	
Gamma Ray Calibration Report			
Serial Number:	TITAN2		
Tool Model:	T2		
Performed:	Thu Jan 10 08:37:09 2008		
Calibrator Value:	1.0	GAPI	
Background Reading:	0.0	cps	
Calibrator Reading:	1.0	cps	
Sensitivity:	1.5000	GAPI/cps	