

Patterson

**CEMENT
BOND
LOG**

Company	XTO Energy Inc.
Well	Golden Eagle 28-07X
Field	Purgatoire River
County	Las Animas
State	Colorado

Location:	API # : 05 071 08732 00	Other Services
	1456' FNL & 1824' FEL	TEMP
Permanent Datum	SEC 28 TWP 33S RGE 67W	Elevation
Log Measured From	Ground Level	K.B. -----
Drilling Measured From	Ground Level	D.F. -----
		G.L. 7341'

Date	3-30-06	3-30-06	
Run Number	One	Two	
Depth Driller	2025'	2025'	
Depth Logger	1933'	1933'	
Bottom Logged Interval	1931'	1931'	
Top Log Interval	Surface	Surface	
Open Hole Size	7 7/8"	7 7/8"	
Type Fluid	Water	Water	
Density / Viscosity	///	///	
Max. Recorded Temp.	110 DEG F	///	
Estimated Cement Top	300'	300'	
Time Well Ready	2:50 P.M.	2:50 P.M.	
Time Logger on Bottom	3:10 P.M.	5:25 P.M.	
Equipment Number	T720	T720	
Location	Trinidad	Trinidad	
Recorded By	M. Norton	M. Norton	
Witnessed By	Mr. Bryan Olmstead	Mr. Bryan Olmstead	

Borehole Record				Tubing Record			
Run Number	Bit	From	To	Size	Weight	From	To
Casing Record	Size	Wgt/Ft	Top	Bottom			
Surface String	8 5/8"		00	500'			
Prot. String							
Production String	5 1/2"		00	N/A			
Liner							

<<< Fold Here >>>

All interpretations are opinions based on inferences from electrical or other measurements and we cannot and do not guarantee the accuracy or correctness of any interpretation, and we shall not, except in the case of gross or willful negligence on our part, be liable or responsible for any loss, costs, damages, or expenses incurred or sustained by anyone resulting from any interpretation made by any of our officers, agents or employees. These interpretations are also subject to our general terms and conditions set out in our current Price Schedule.

Comments

Well Directions:
Two Miles west Of weston Turn Right, Thru Green Gate,
At Enclosed Compressor Turn Left, First Location.
Pass Two Logged Under 1000 lbs. of Pressure.

Patterson

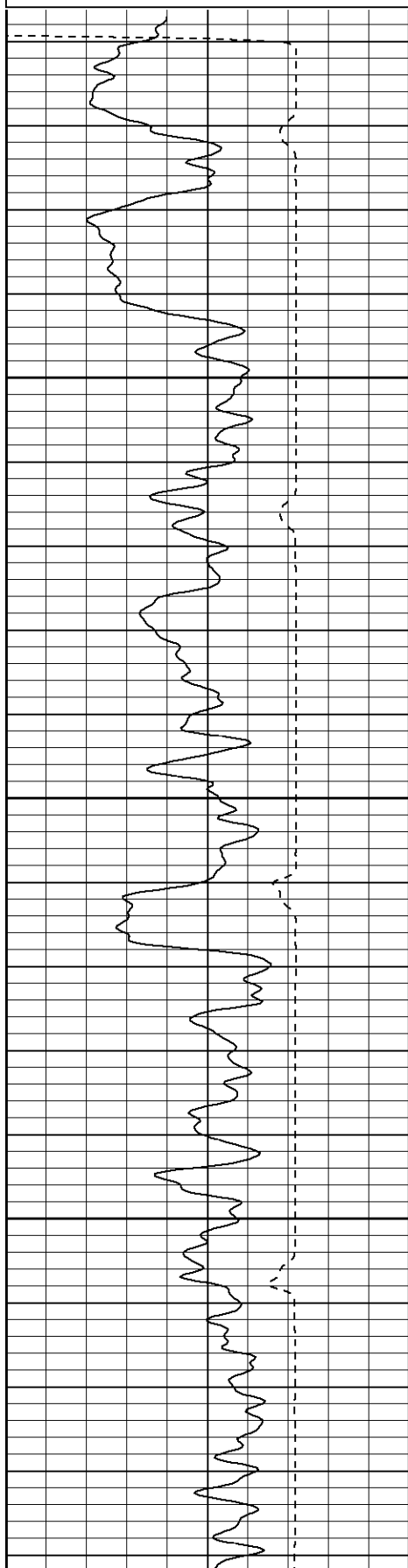
Main Pass

Database File: xtoge2807x33006b.db
Dataset Pathname: pass2
Presentation Format: cblrt
Dataset Creation: Thu Mar 30 15:19:17 2006 by Log Warrior 7.0 STD Ope
Charted by: Depth in Feet scaled 1:240

0	GR (GAPI)	200
400	TT3 (usec)	200

0	AMP3 (mV)	100
18	CCL	-2

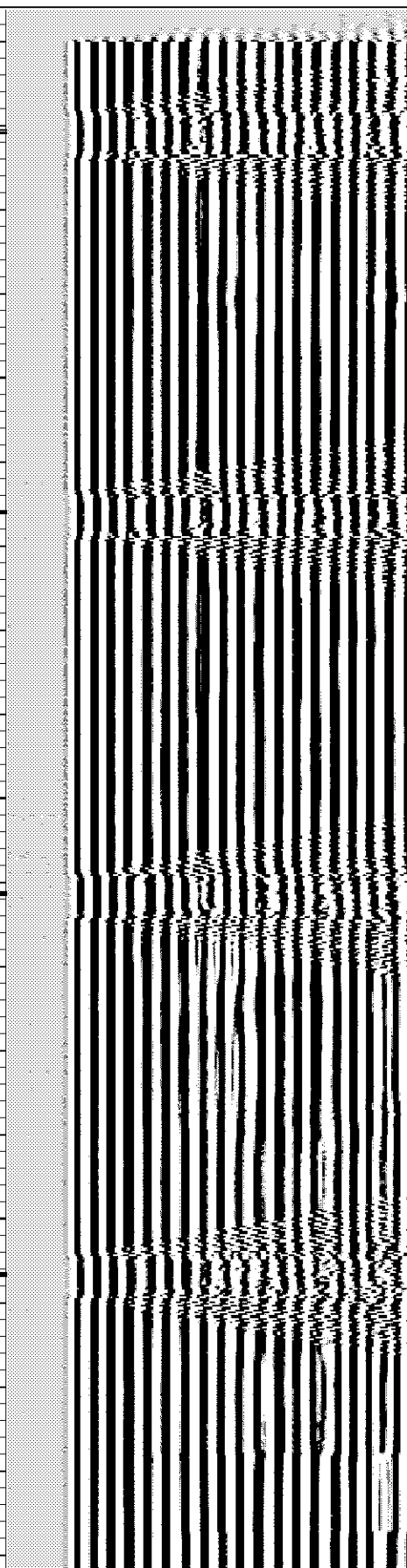
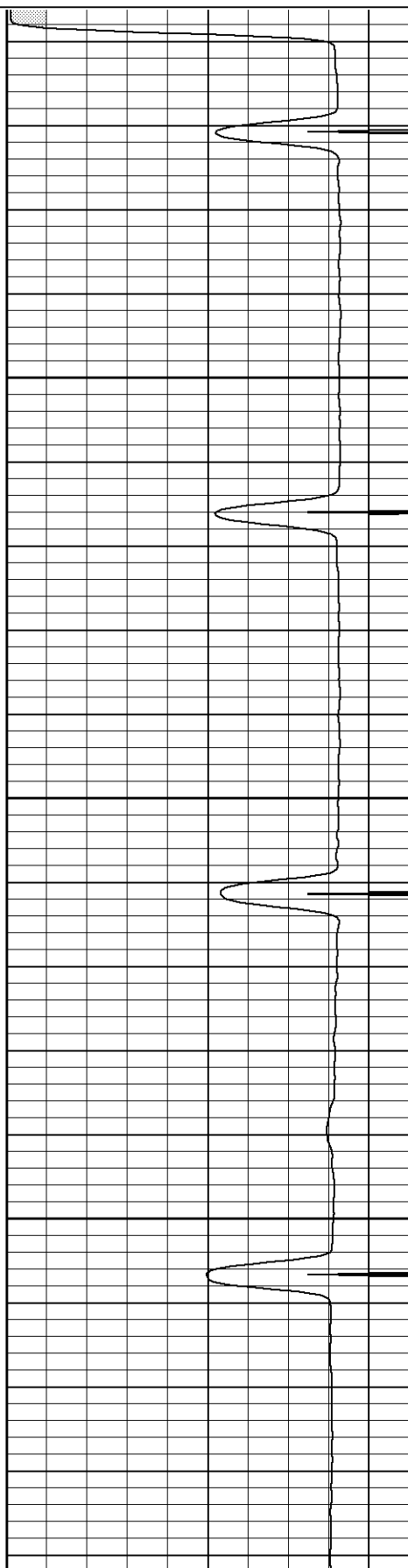
200	Variable Density	1200
-----	------------------	------

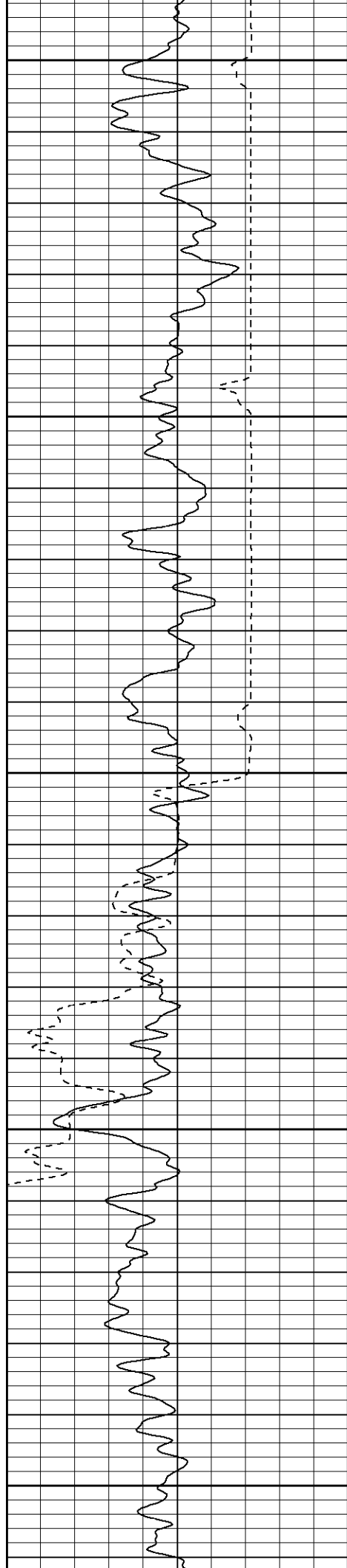


50

100

150





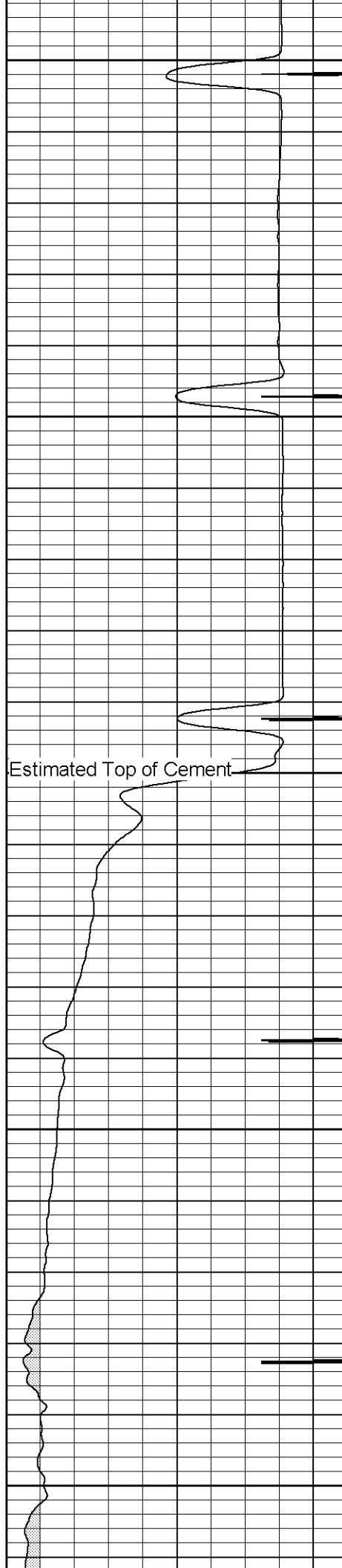
200

250

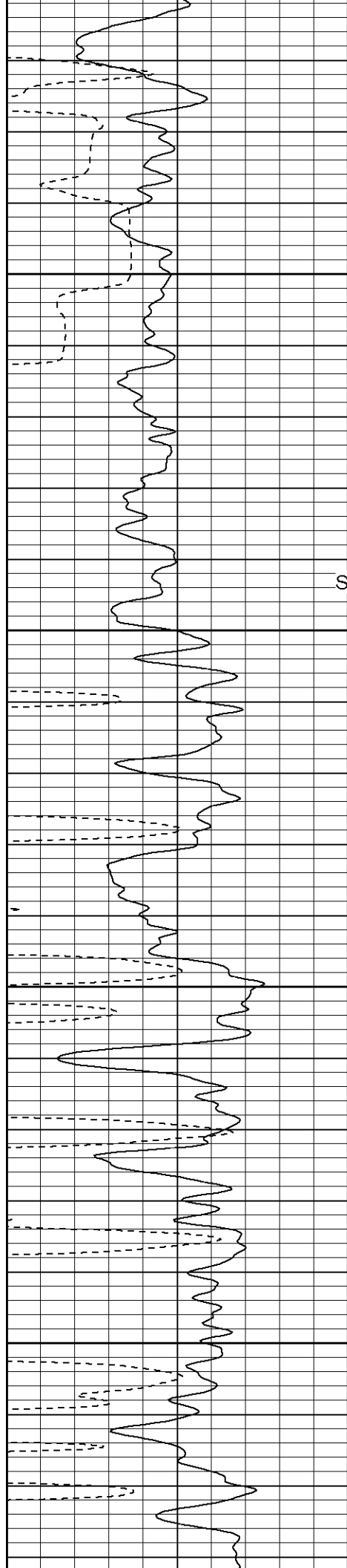
300

350

400



Estimated Top of Cement



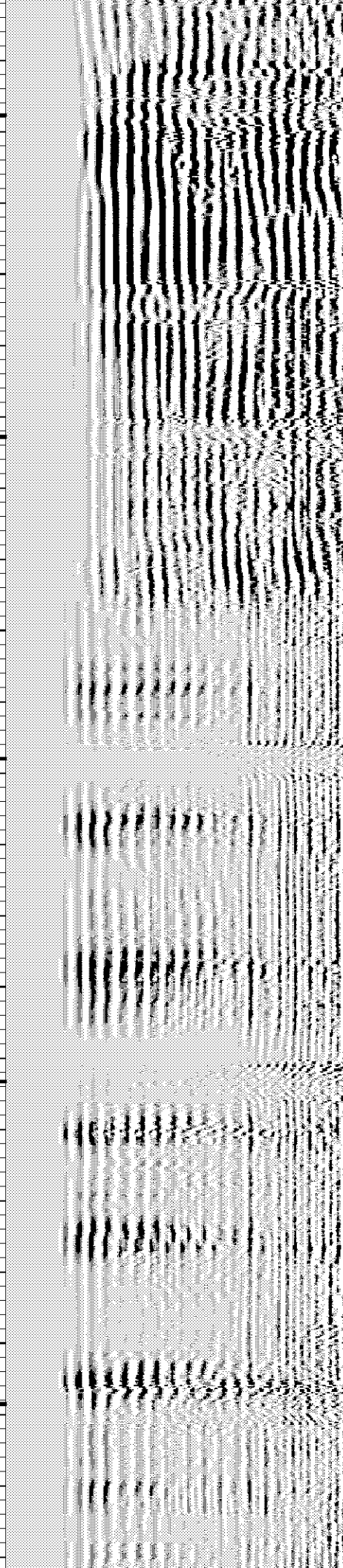
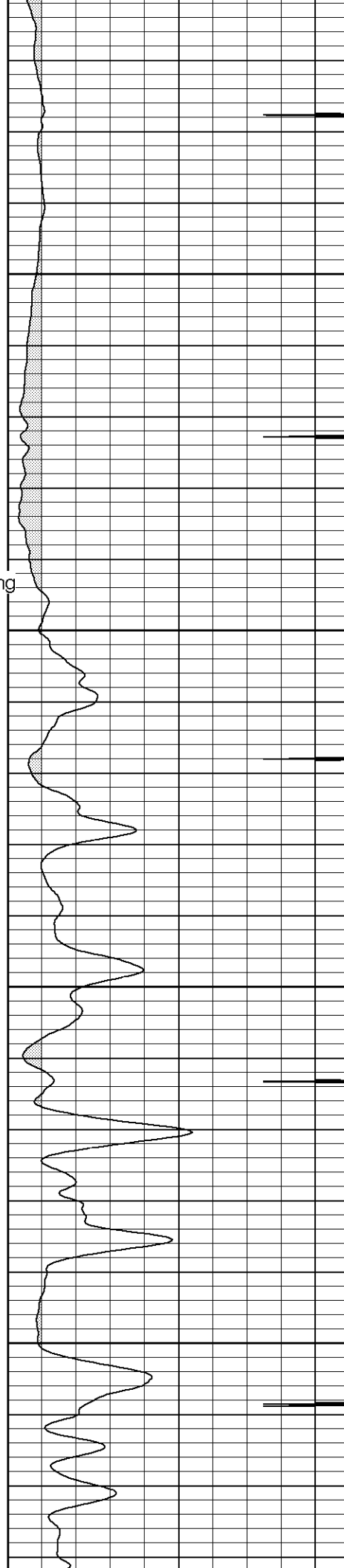
450

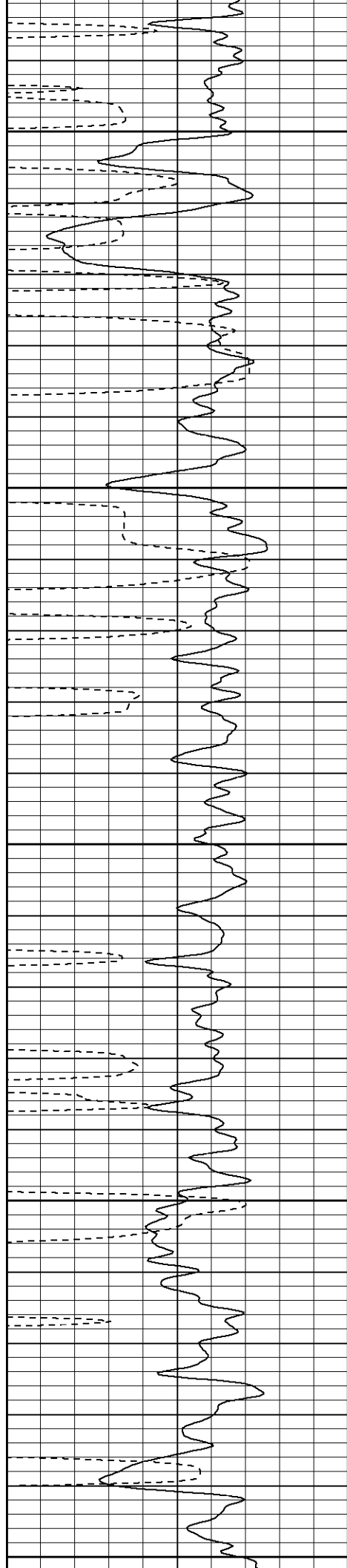
Surface Casing

500

550

600





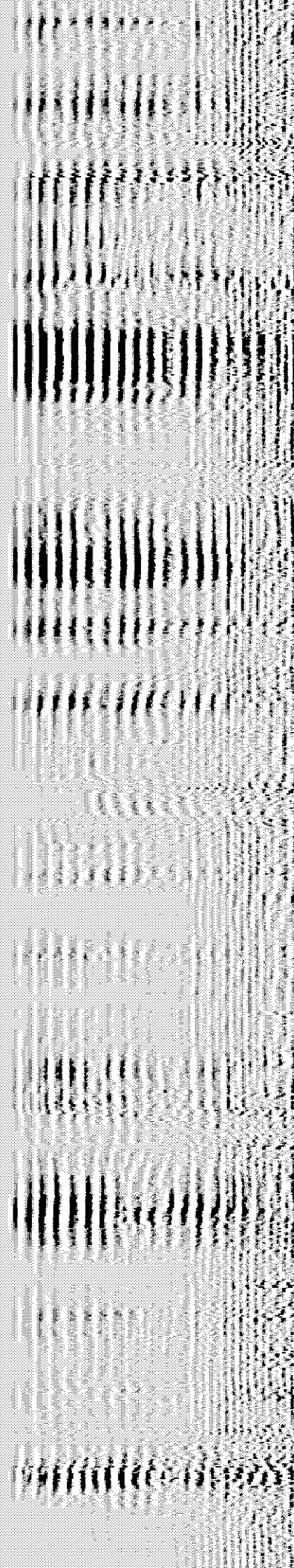
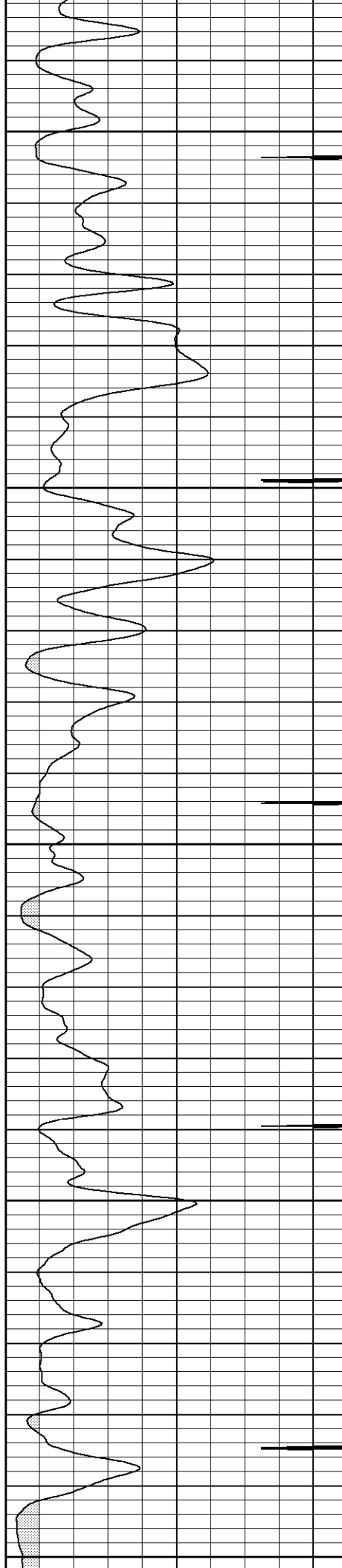
650

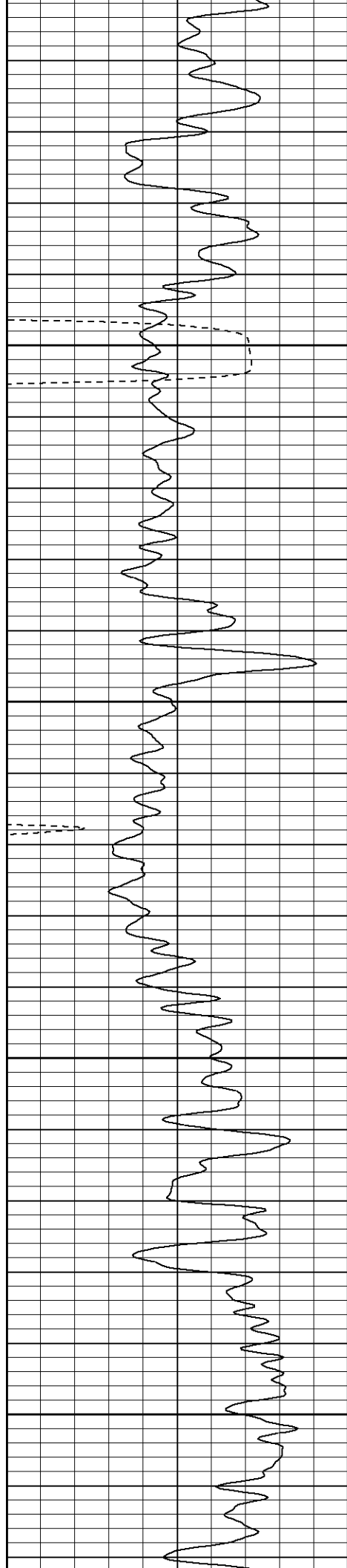
700

750

800

850



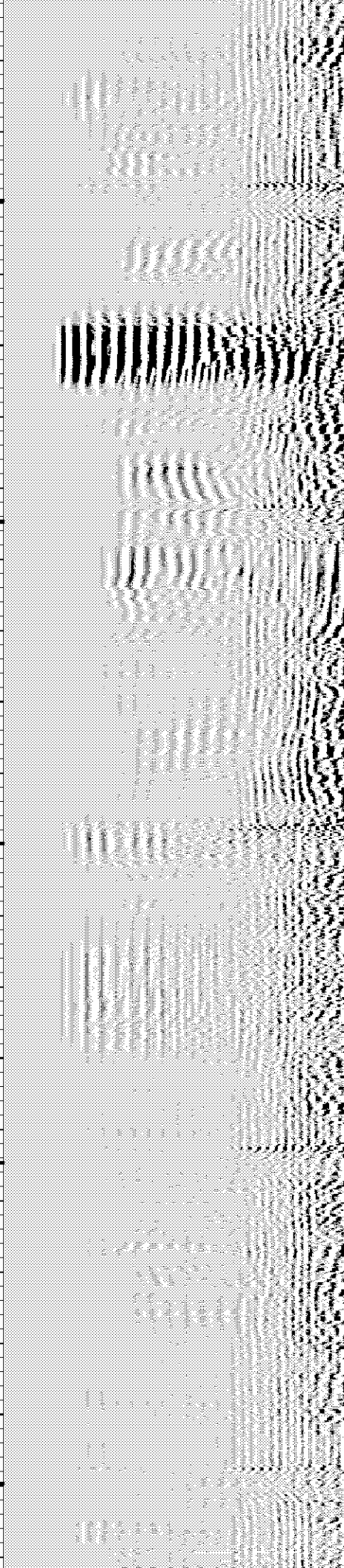
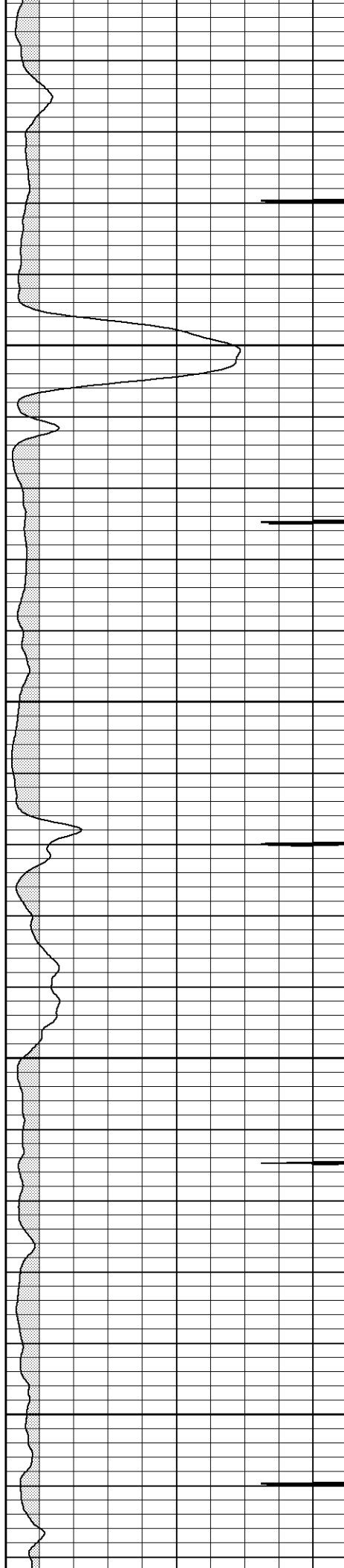


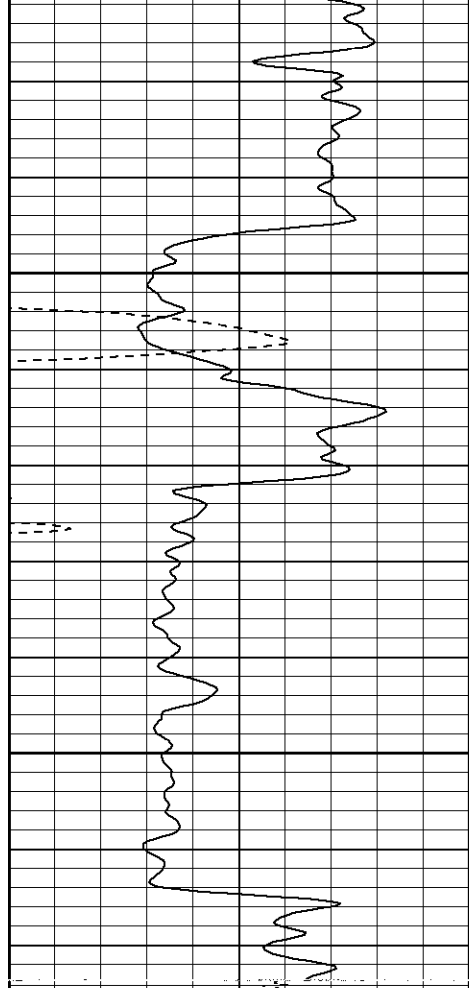
900

950

1000

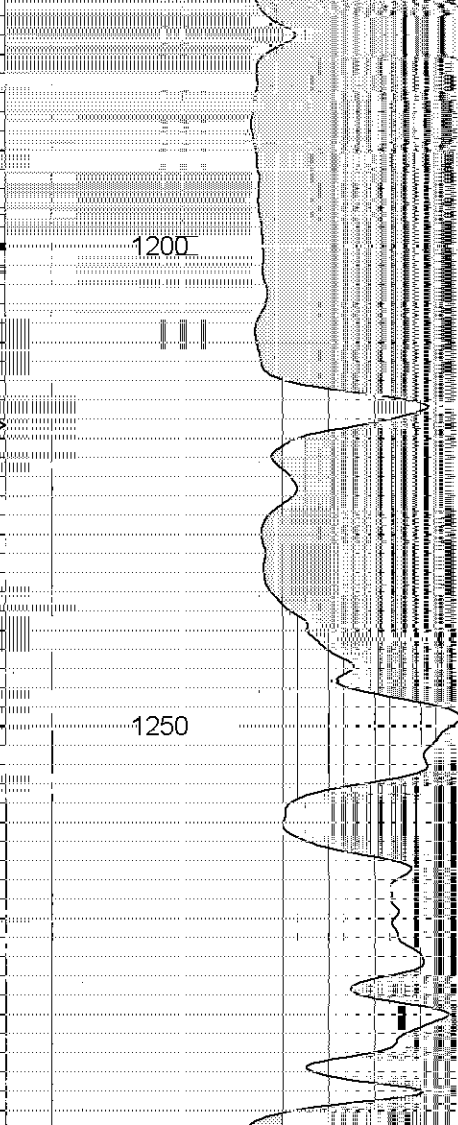
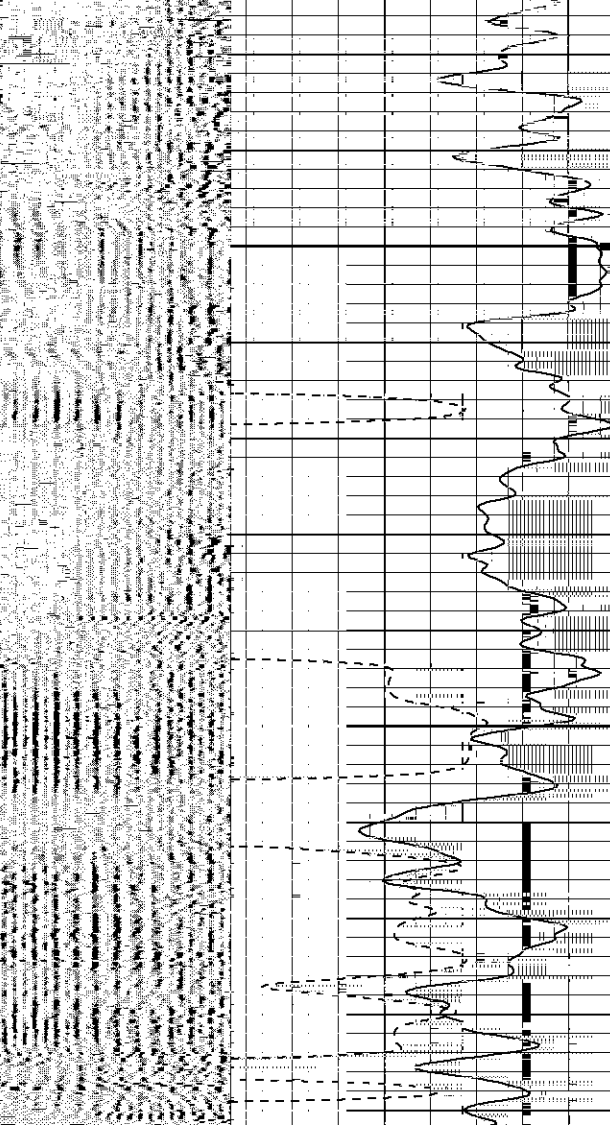
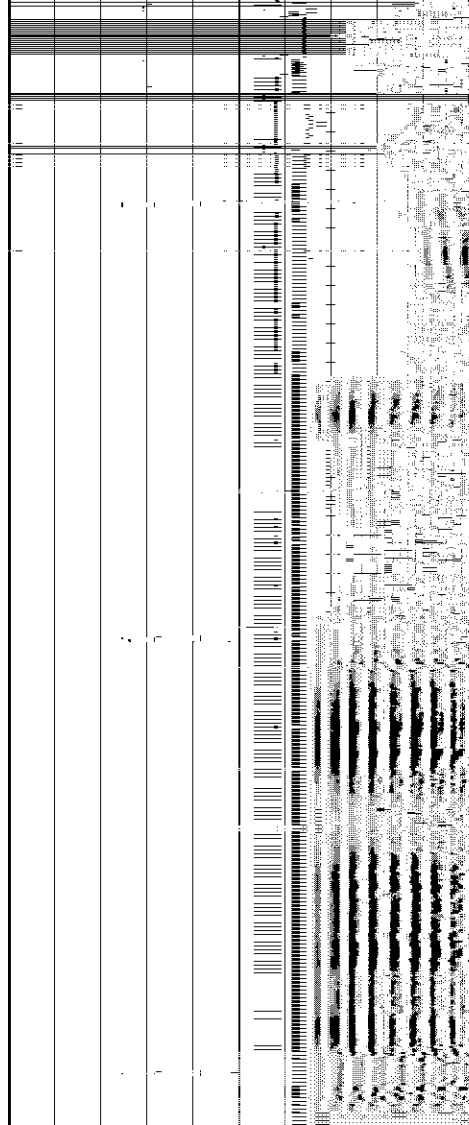
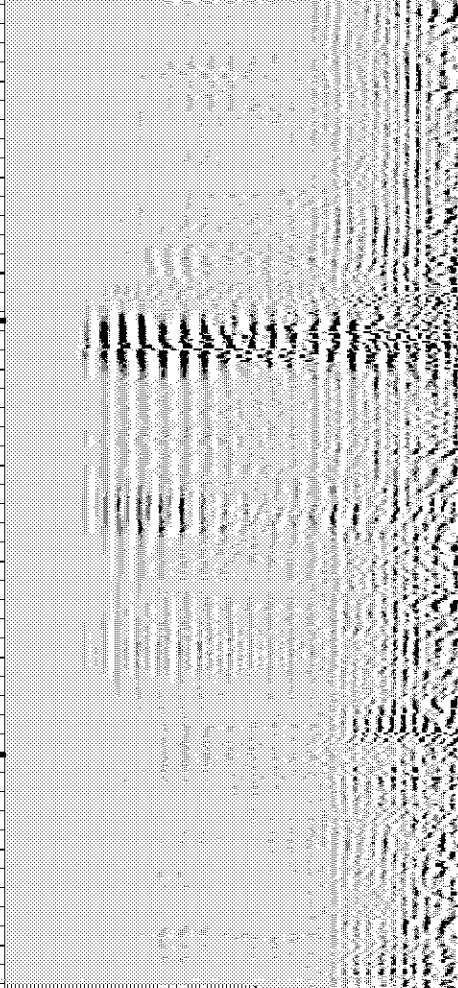
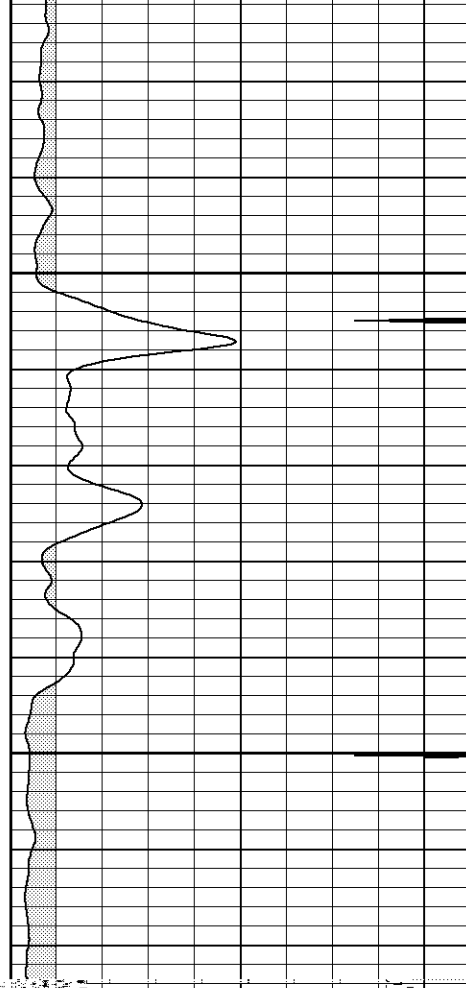
1050





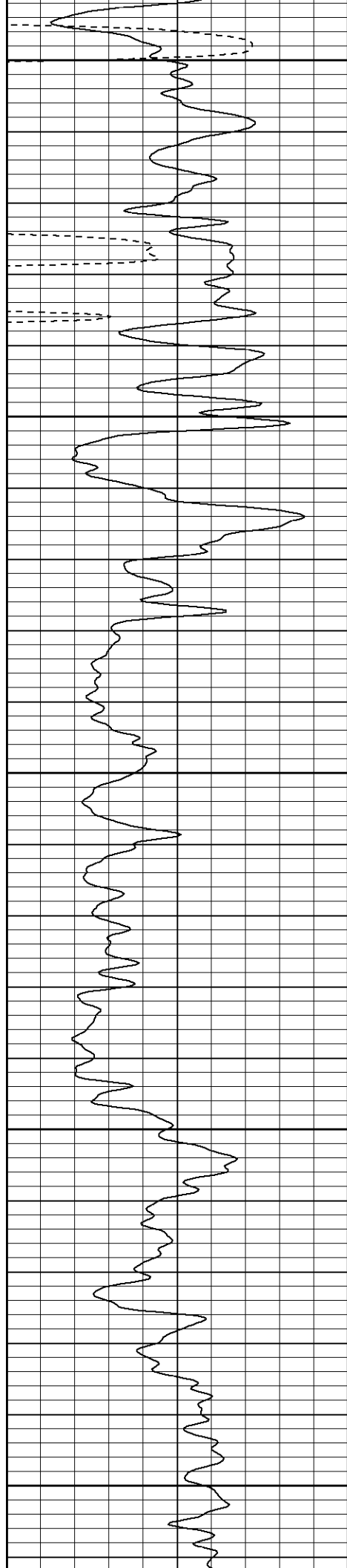
1100

1150



1200

1250



1300

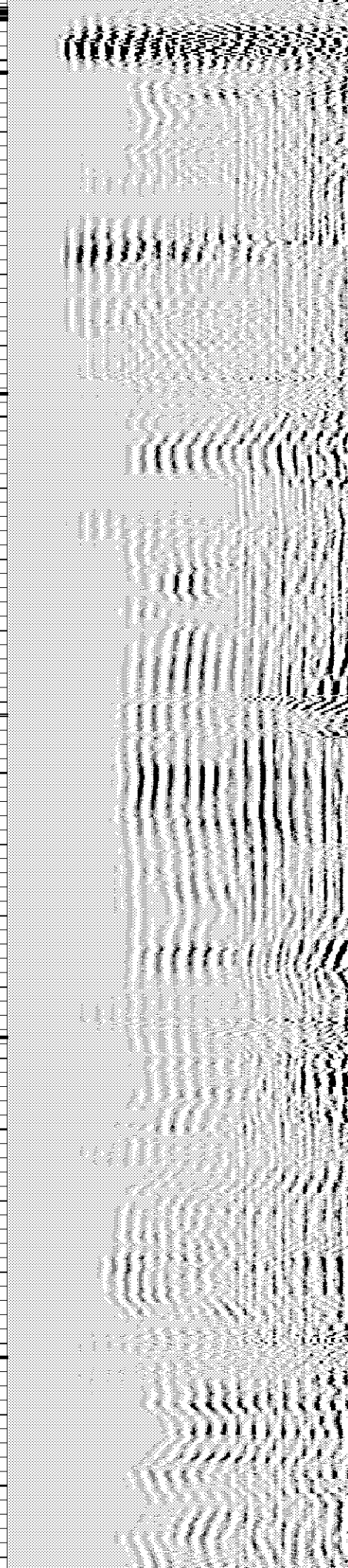
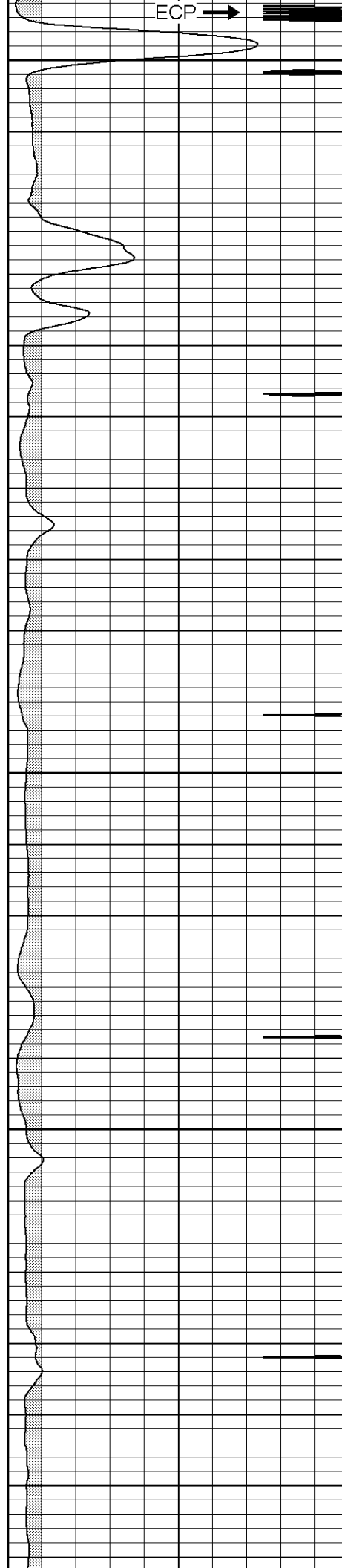
1350

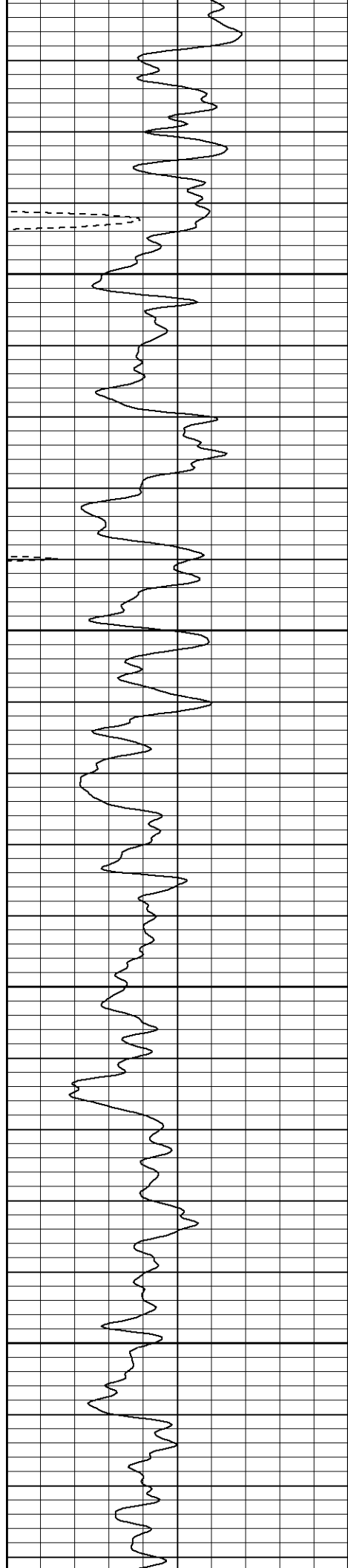
1400

1450

1500

ECP →



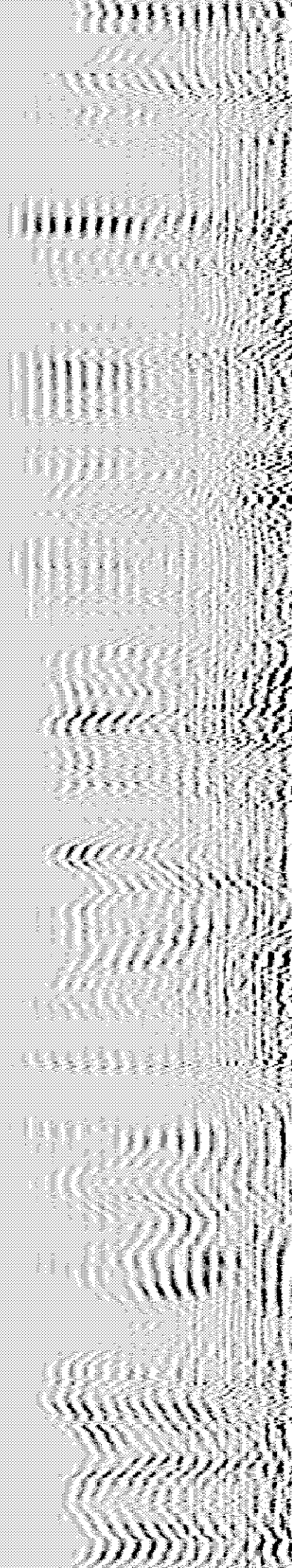
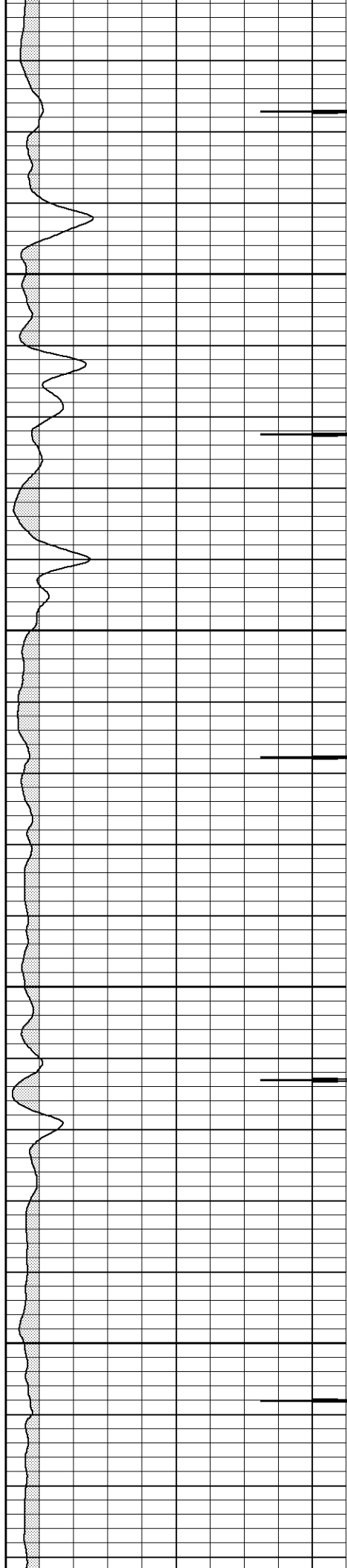


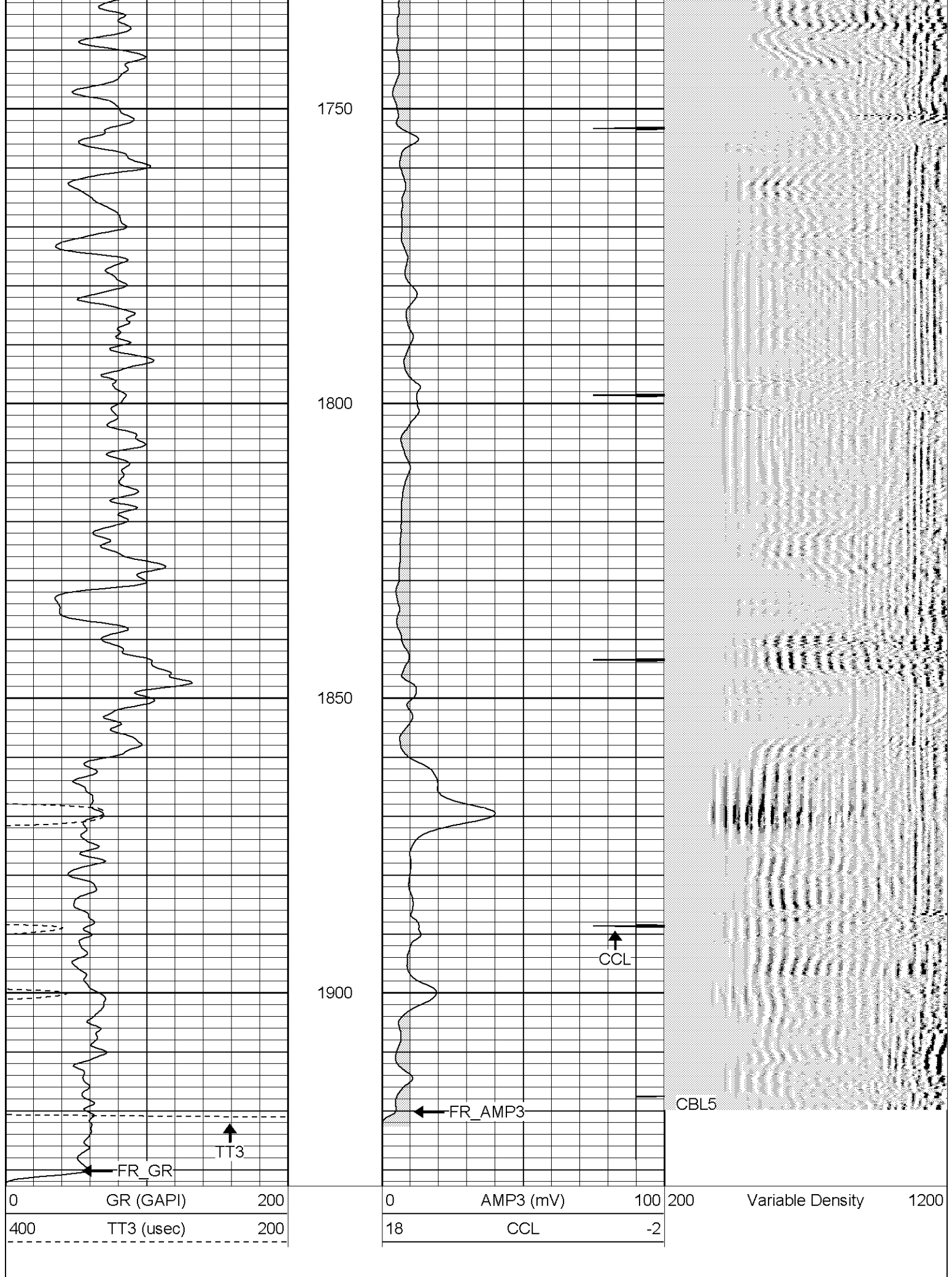
1550

1600

1650

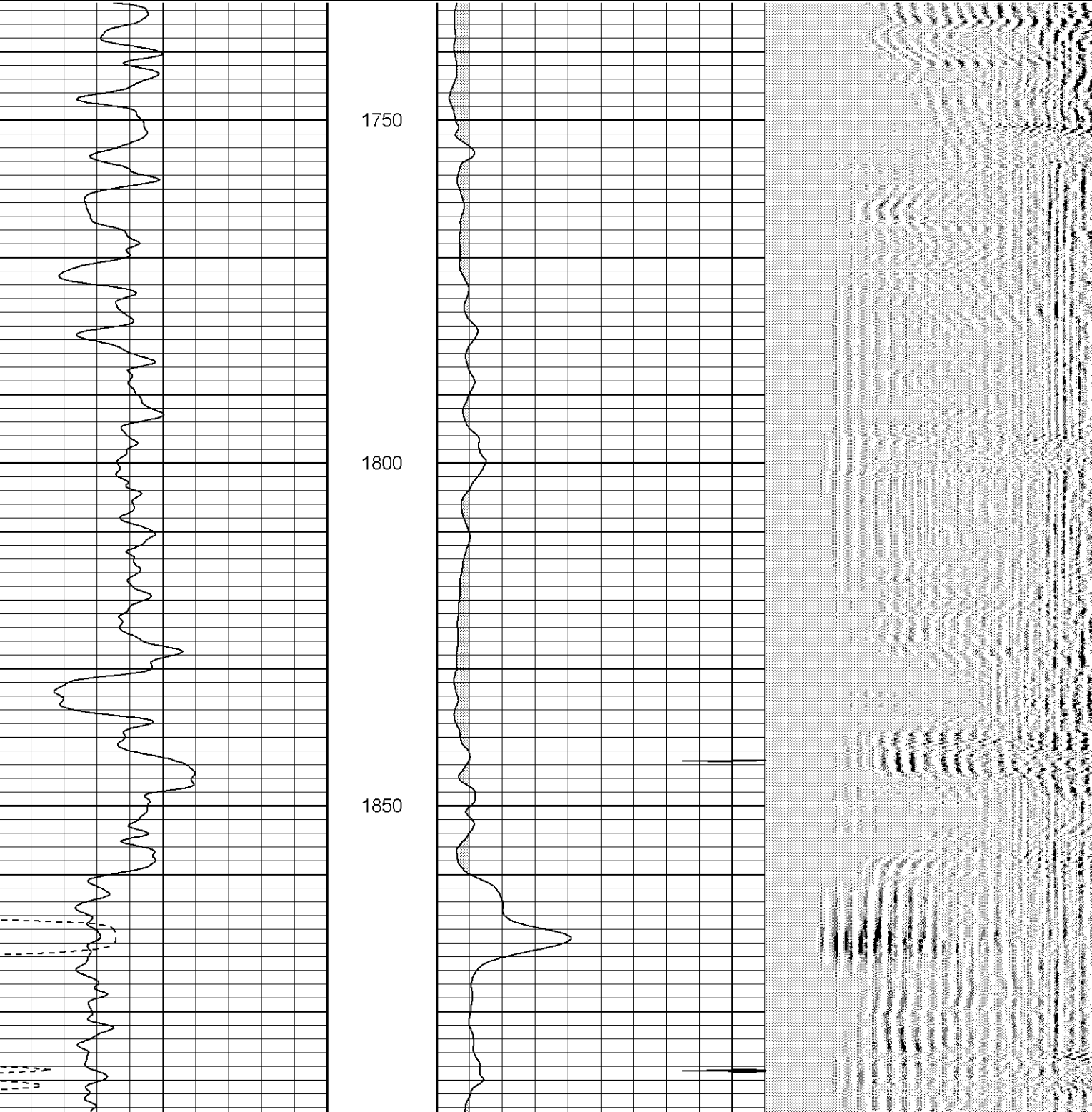
1700

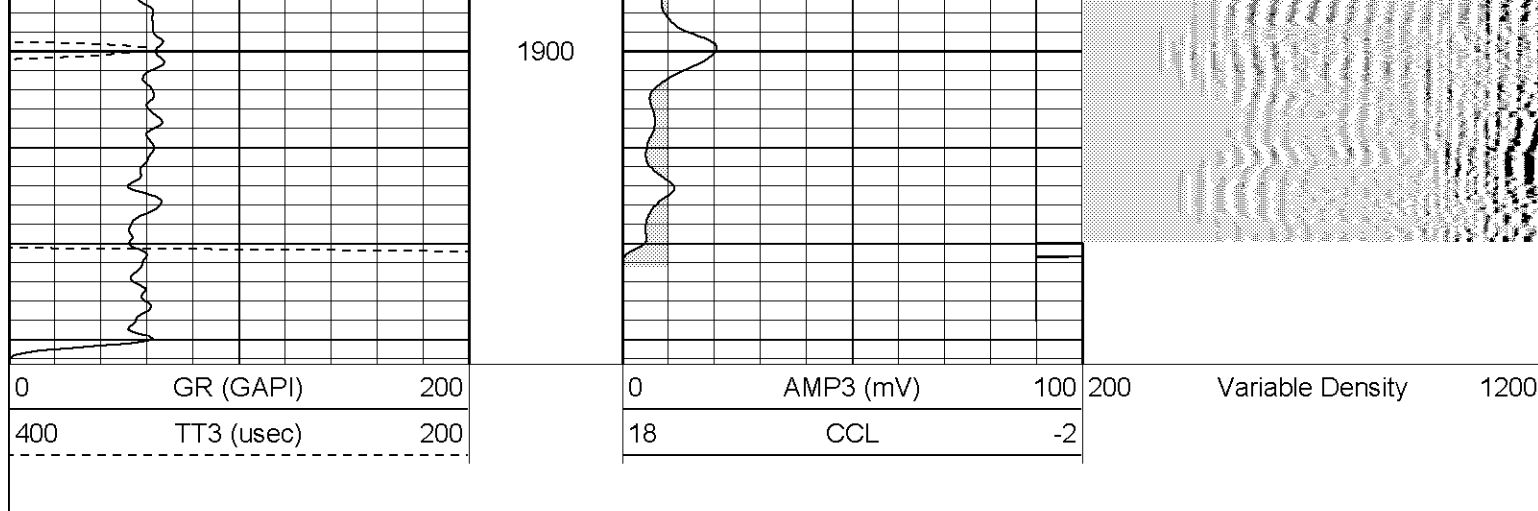




Database File: xtoge2807x33006b.db
Dataset Pathname: pass1
Presentation Format: cblrt
Dataset Creation: Thu Mar 30 15:09:46 2006 by Log Warrior 7.0 STD Ope
Charted by: Depth in Feet scaled 1:240

0	GR (GAPI)	200	0	AMP3 (mV)	100	200	Variable Density	1200
400	TT3 (usec)	200	18	CCL	-2			

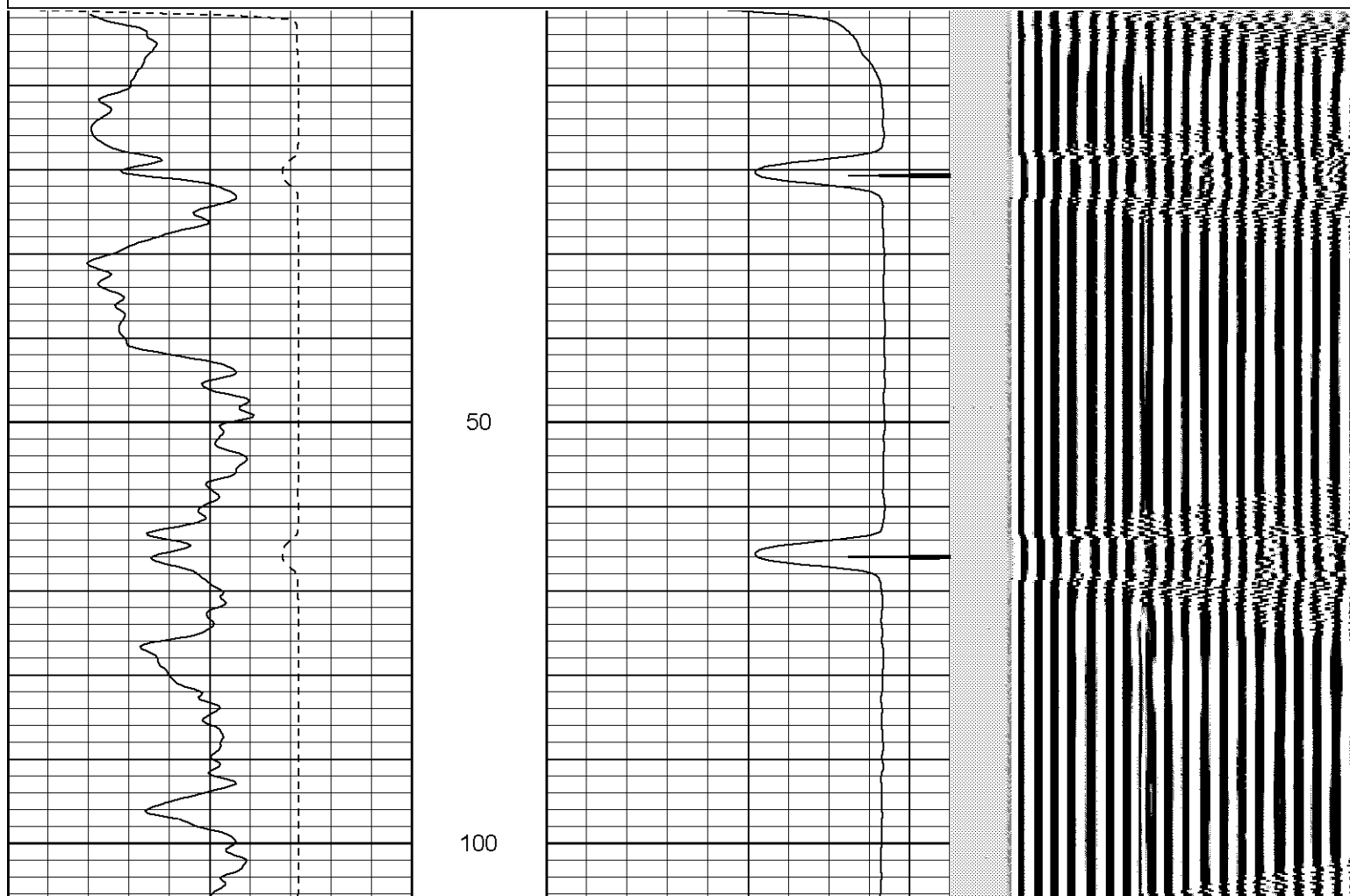
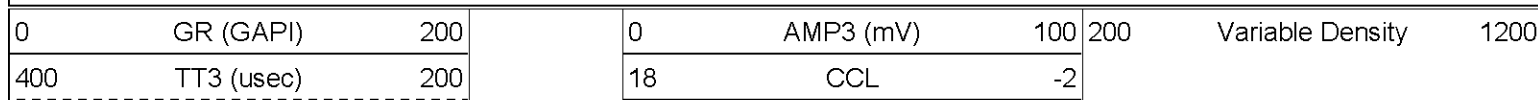


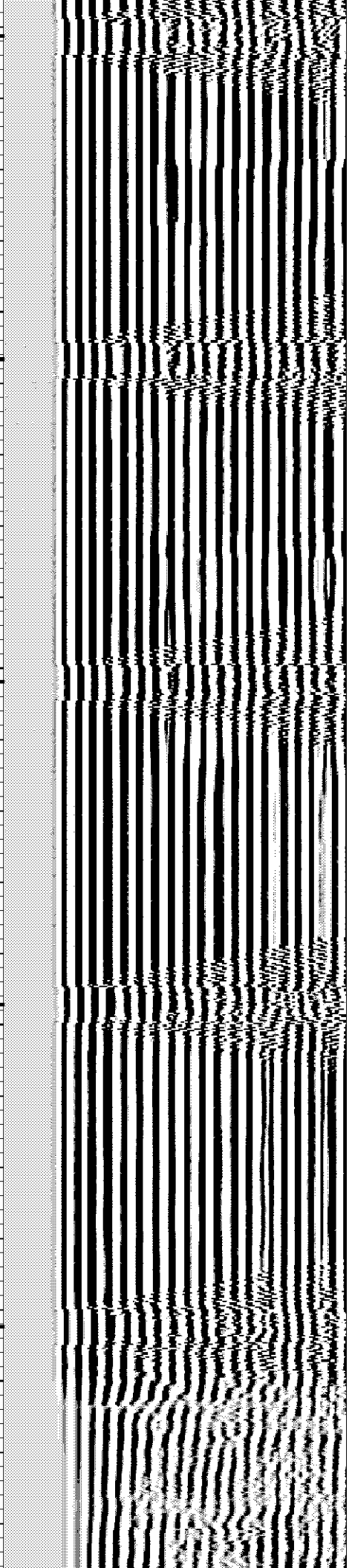
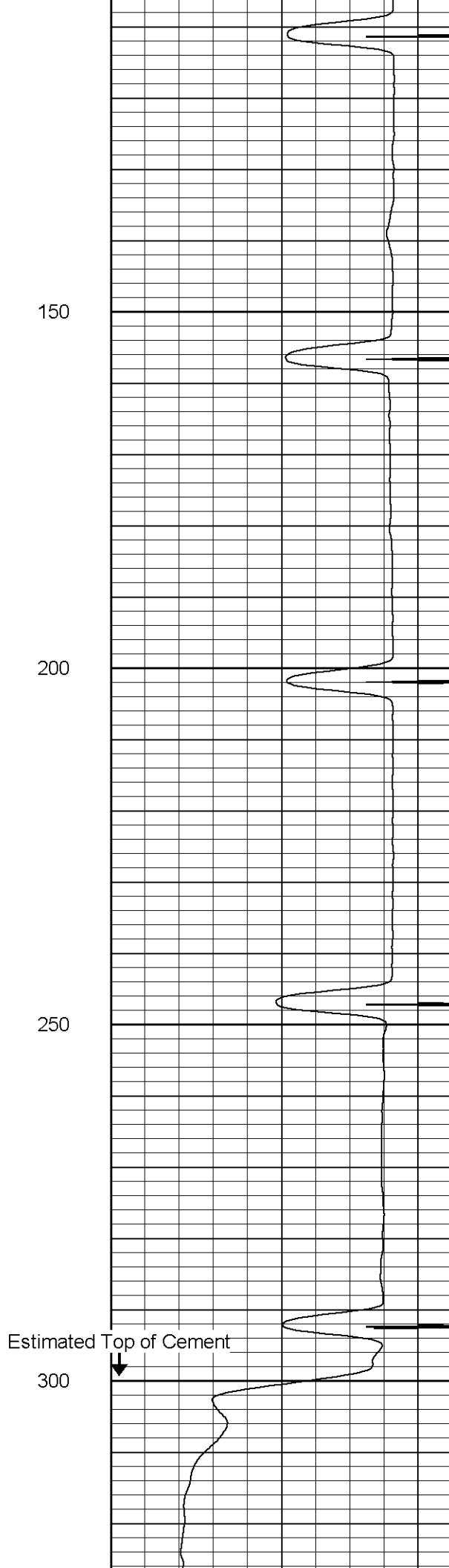
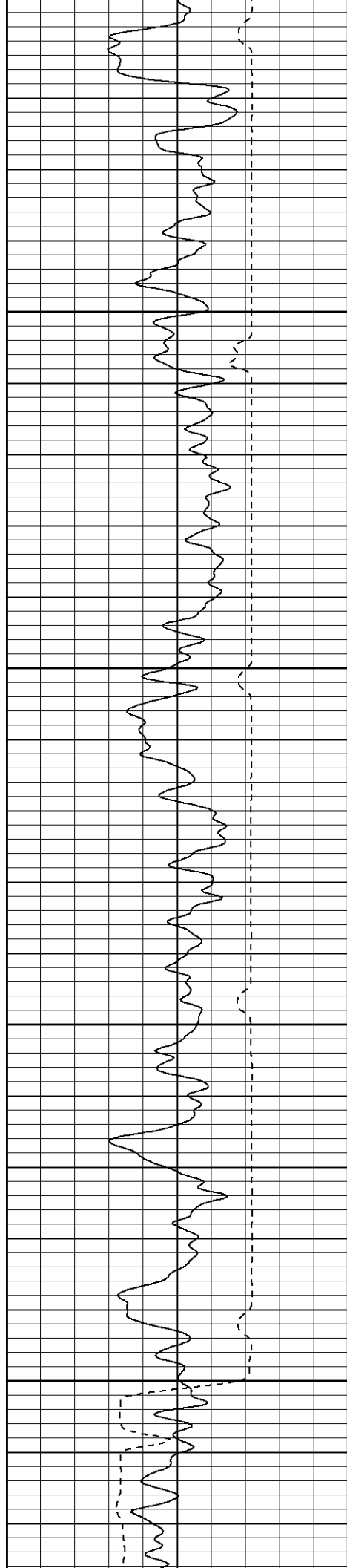


Patterson

Main Pass 1000 PSI

Database File: xtoge2807x33006b.db
 Dataset Pathname: pass4.1
 Presentation Format: cblrt
 Dataset Creation: Thu Mar 30 18:38:50 2006 by Calc Warrior 7.0 STD Ope
 Charted by: Depth in Feet scaled 1:240





150

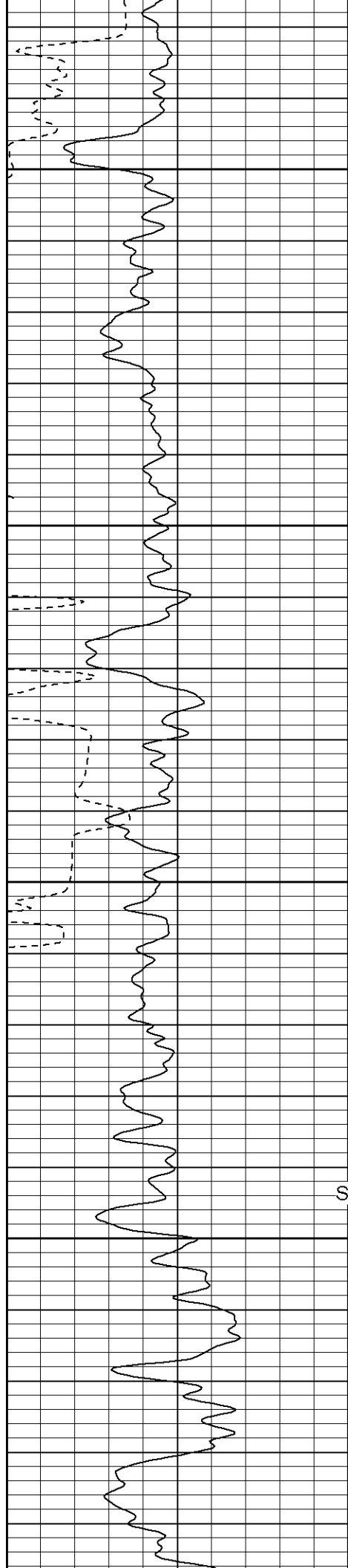
200

250

Estimated Top of Cement

300





350

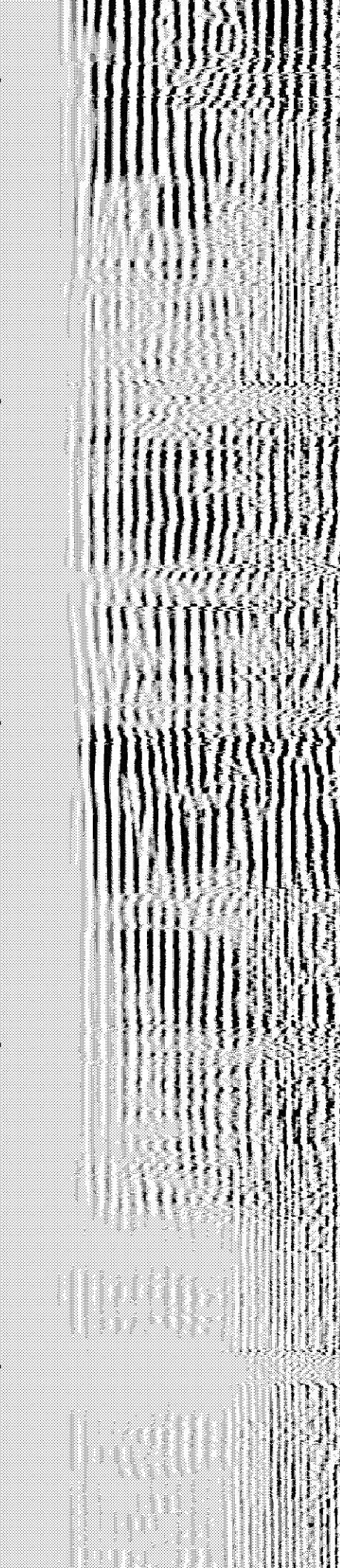
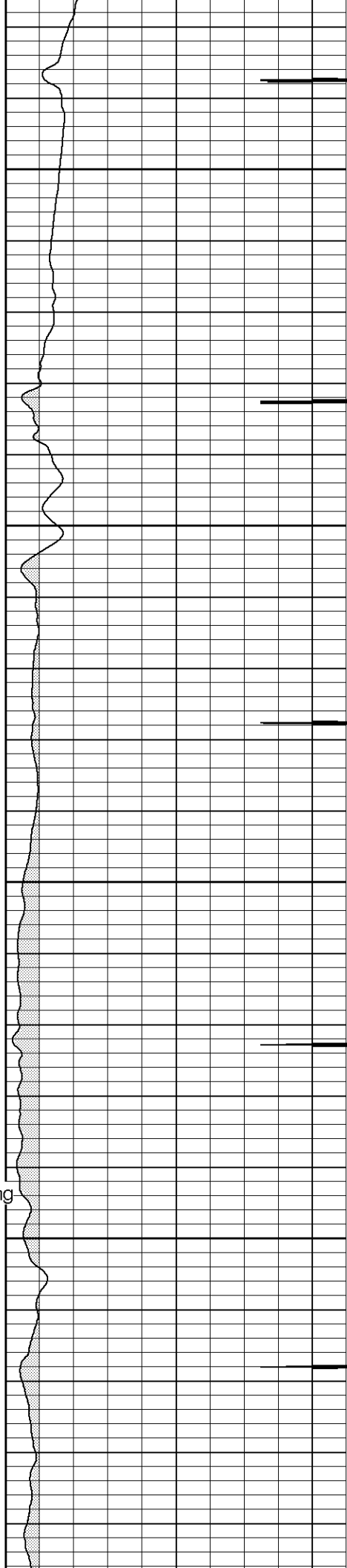
400

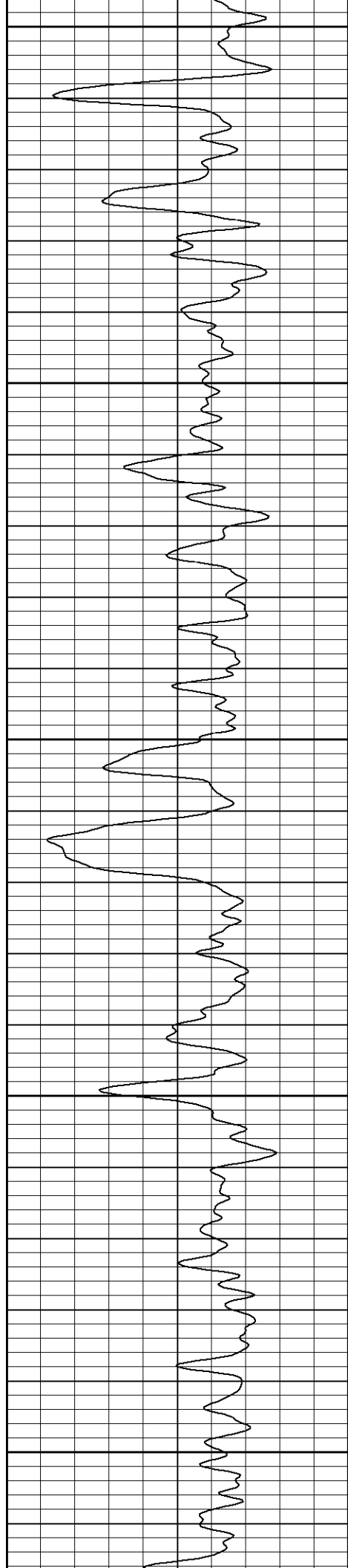
450

Surface Casing



500





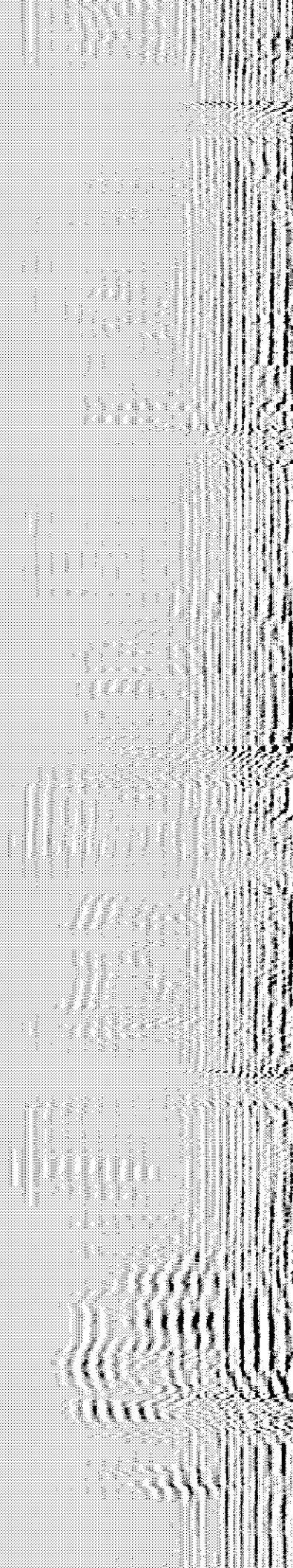
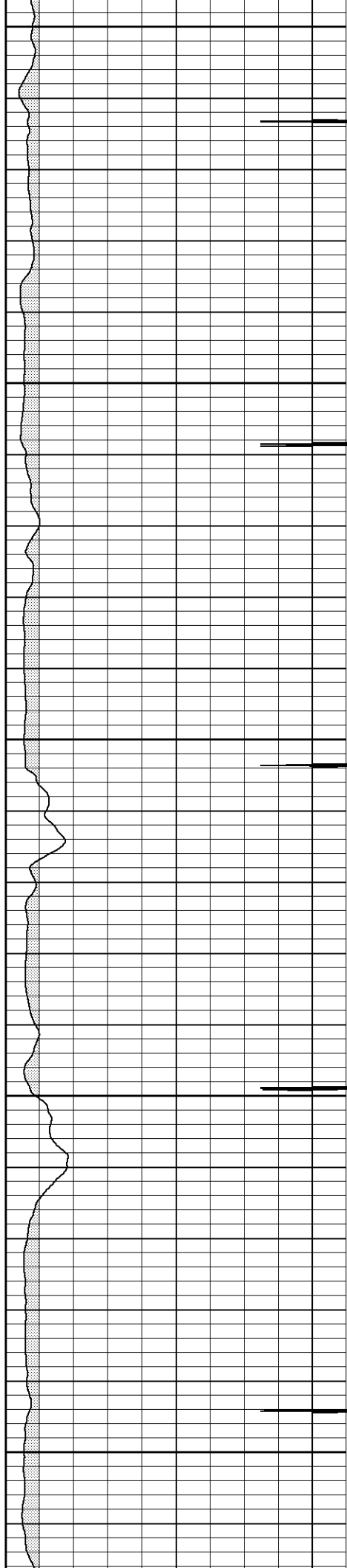
550

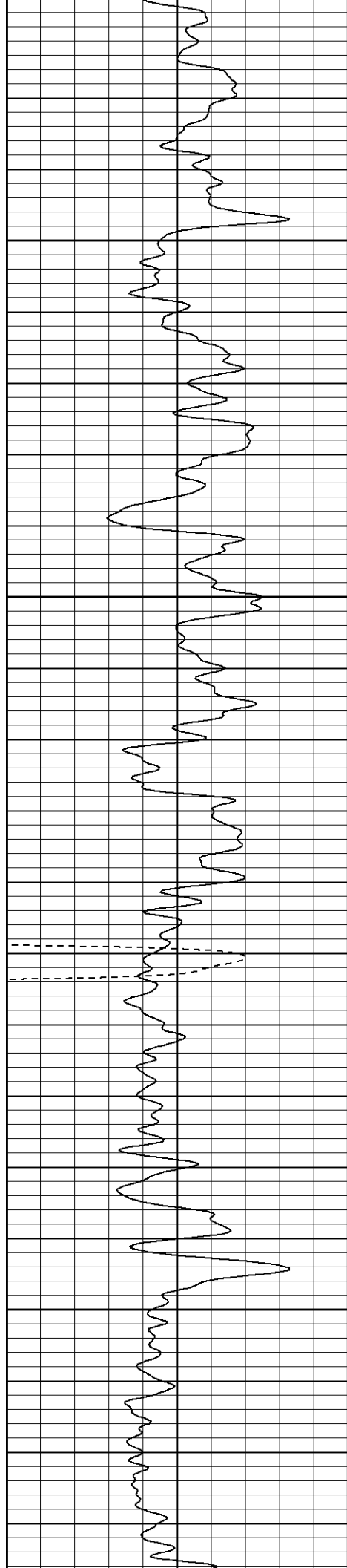
600

650

700

750



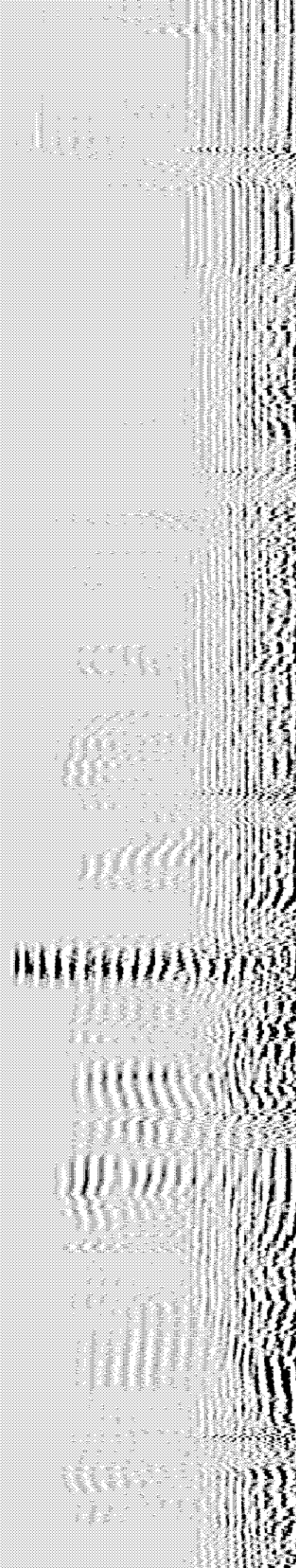
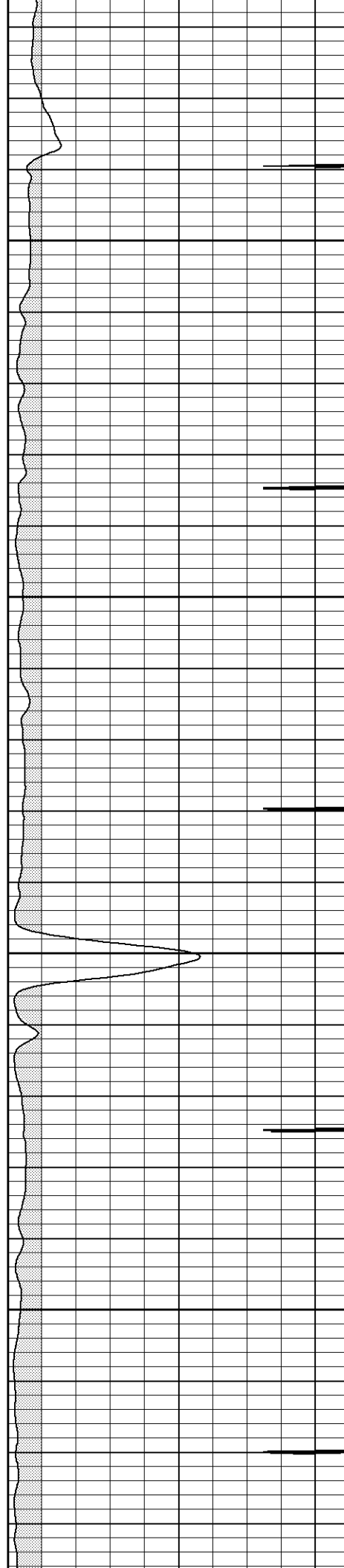


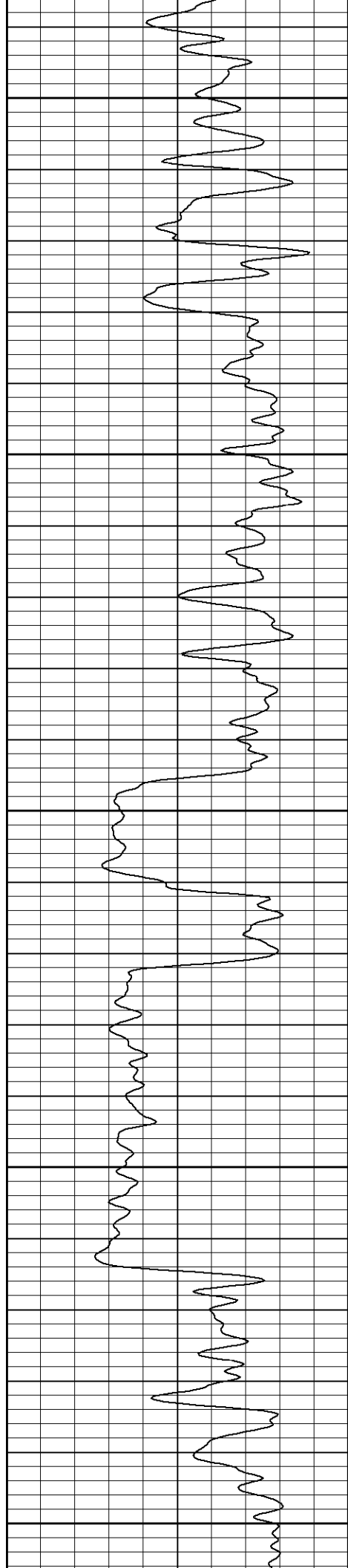
800

850

900

950





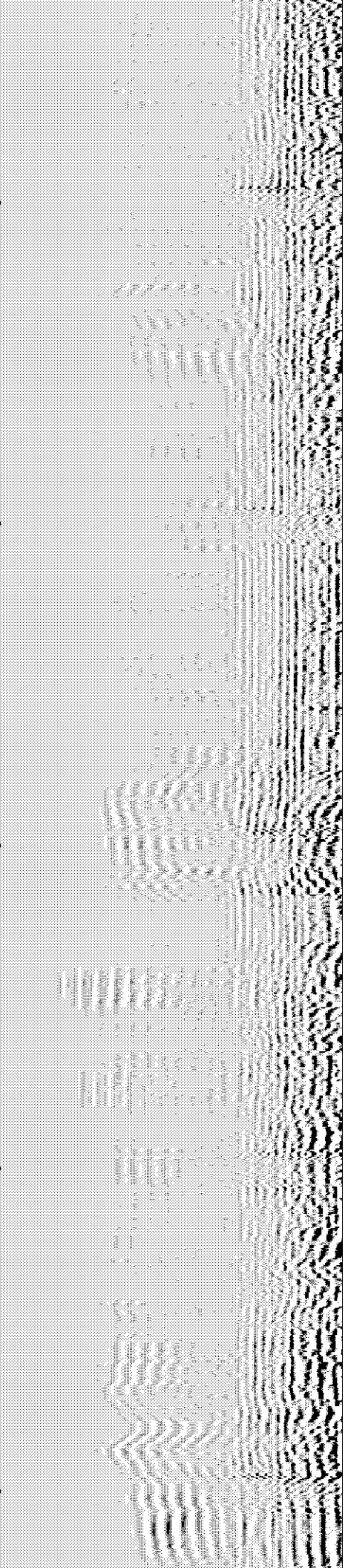
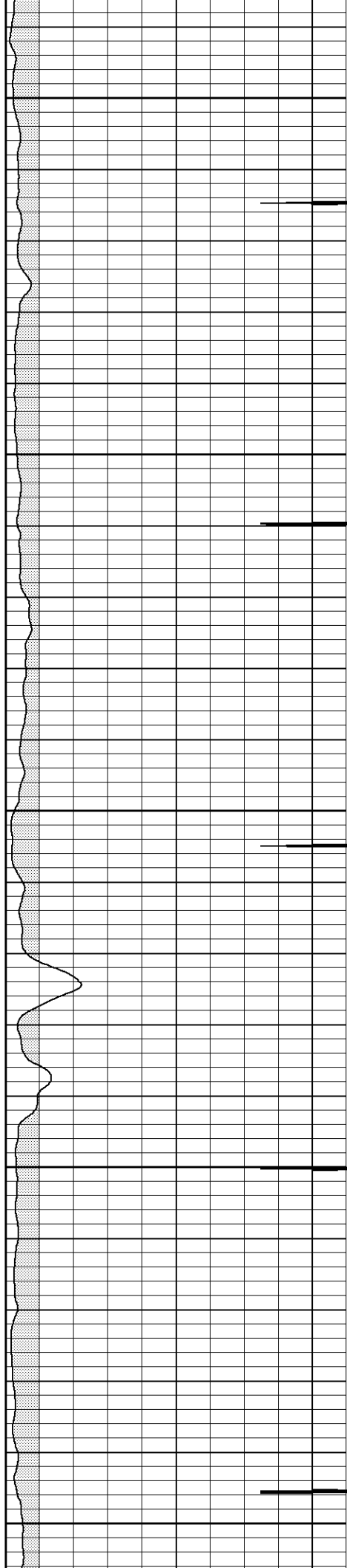
1000

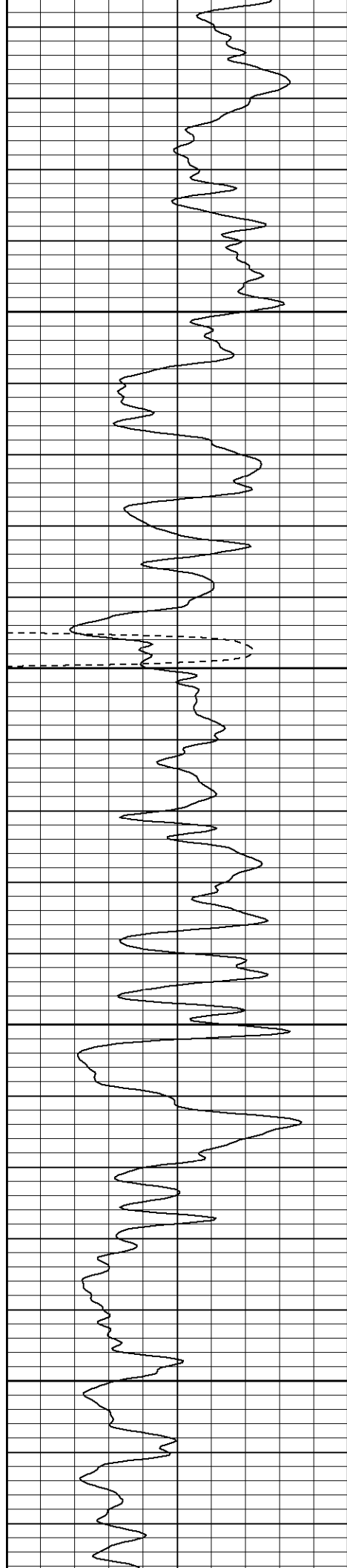
1050

1100

1150

1200





1250

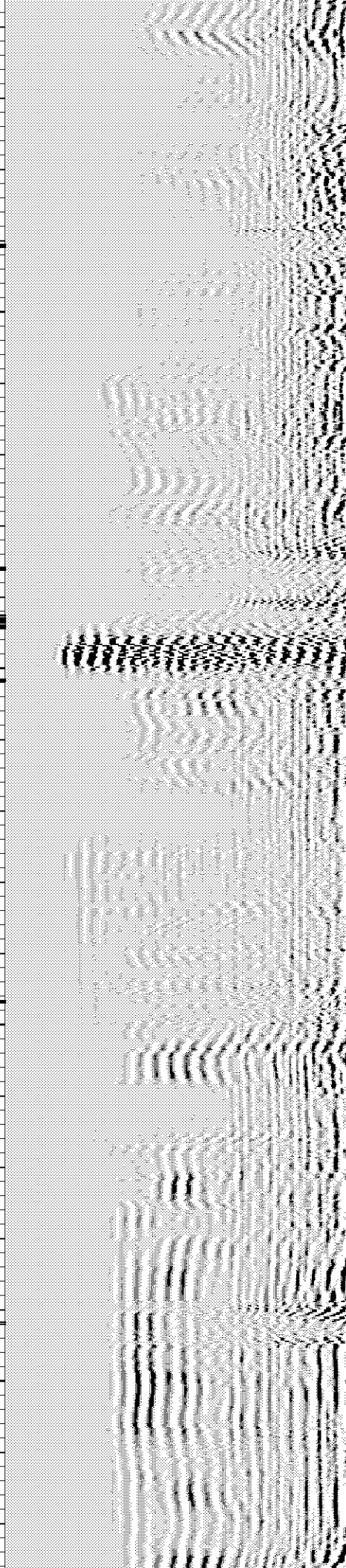
1300

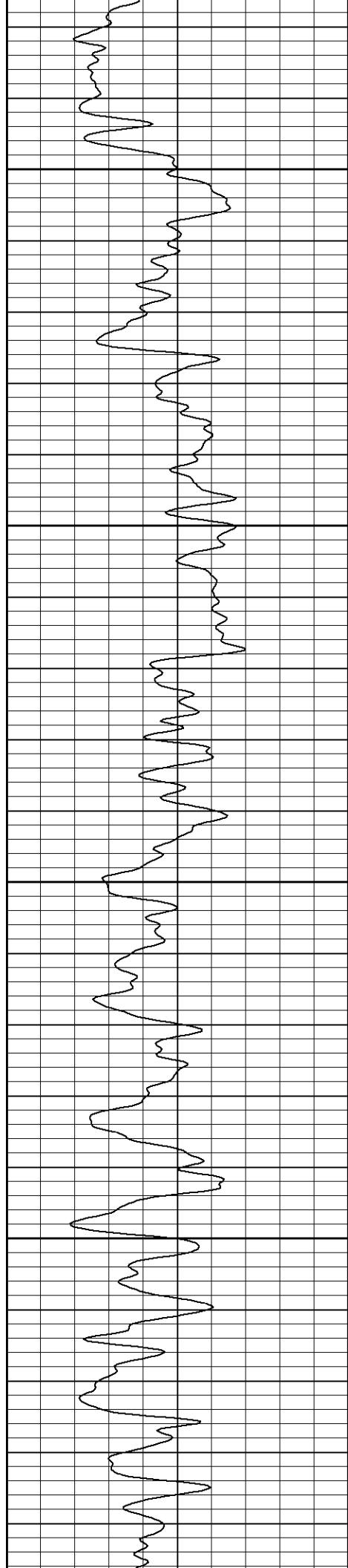
1350

1400



ECP →



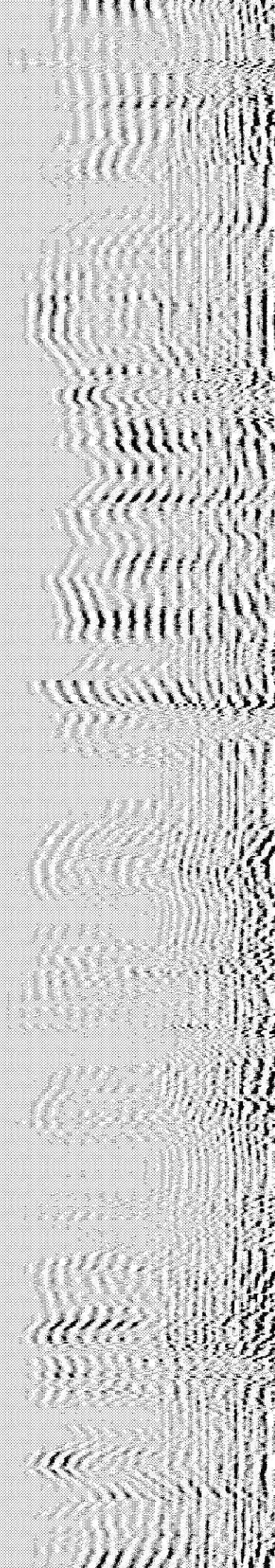
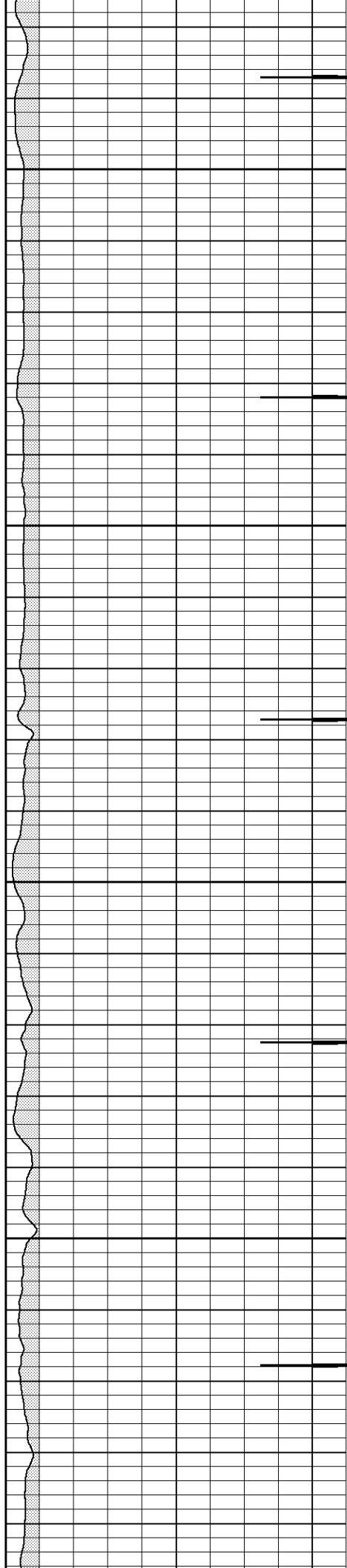


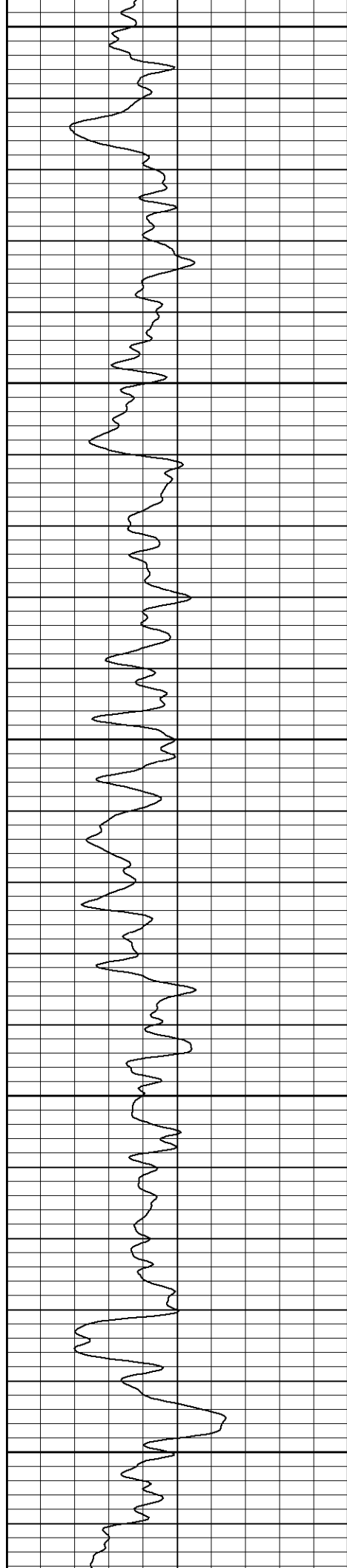
1450

1500

1550

1600





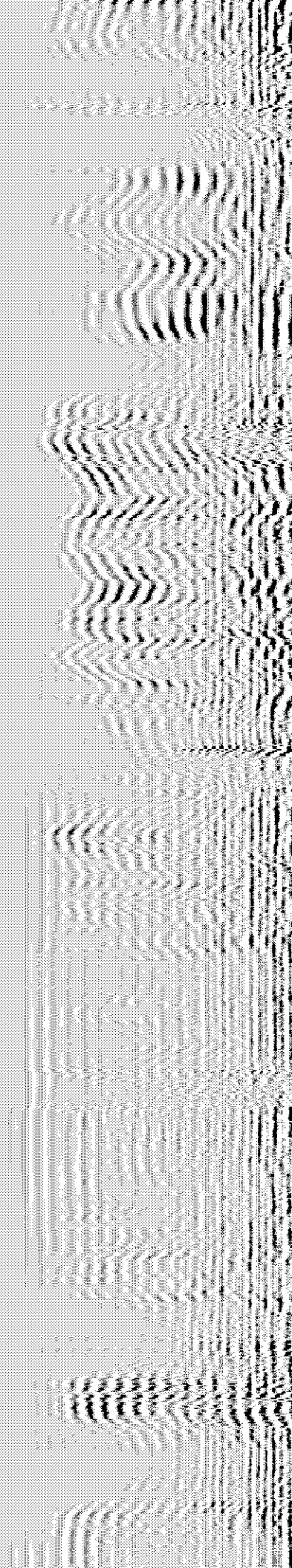
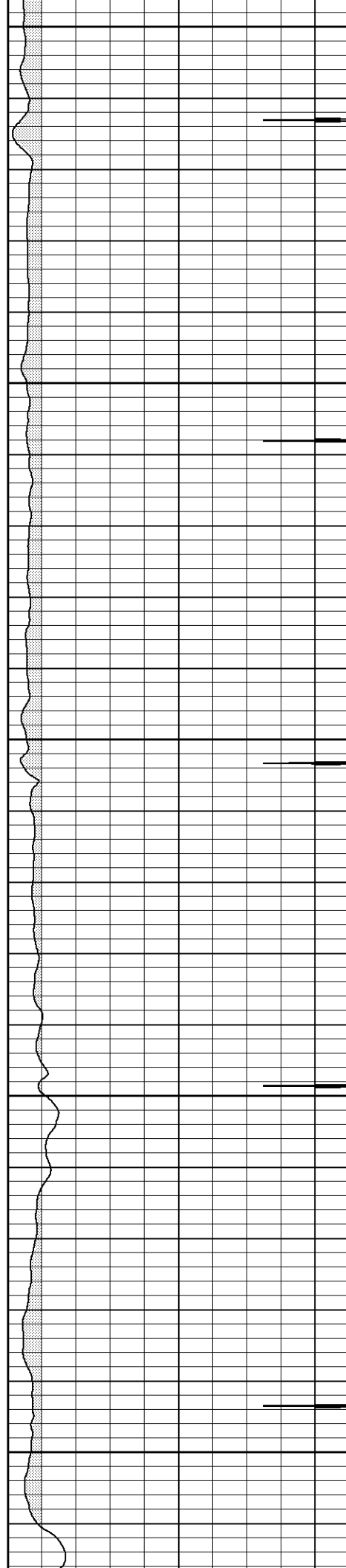
1650

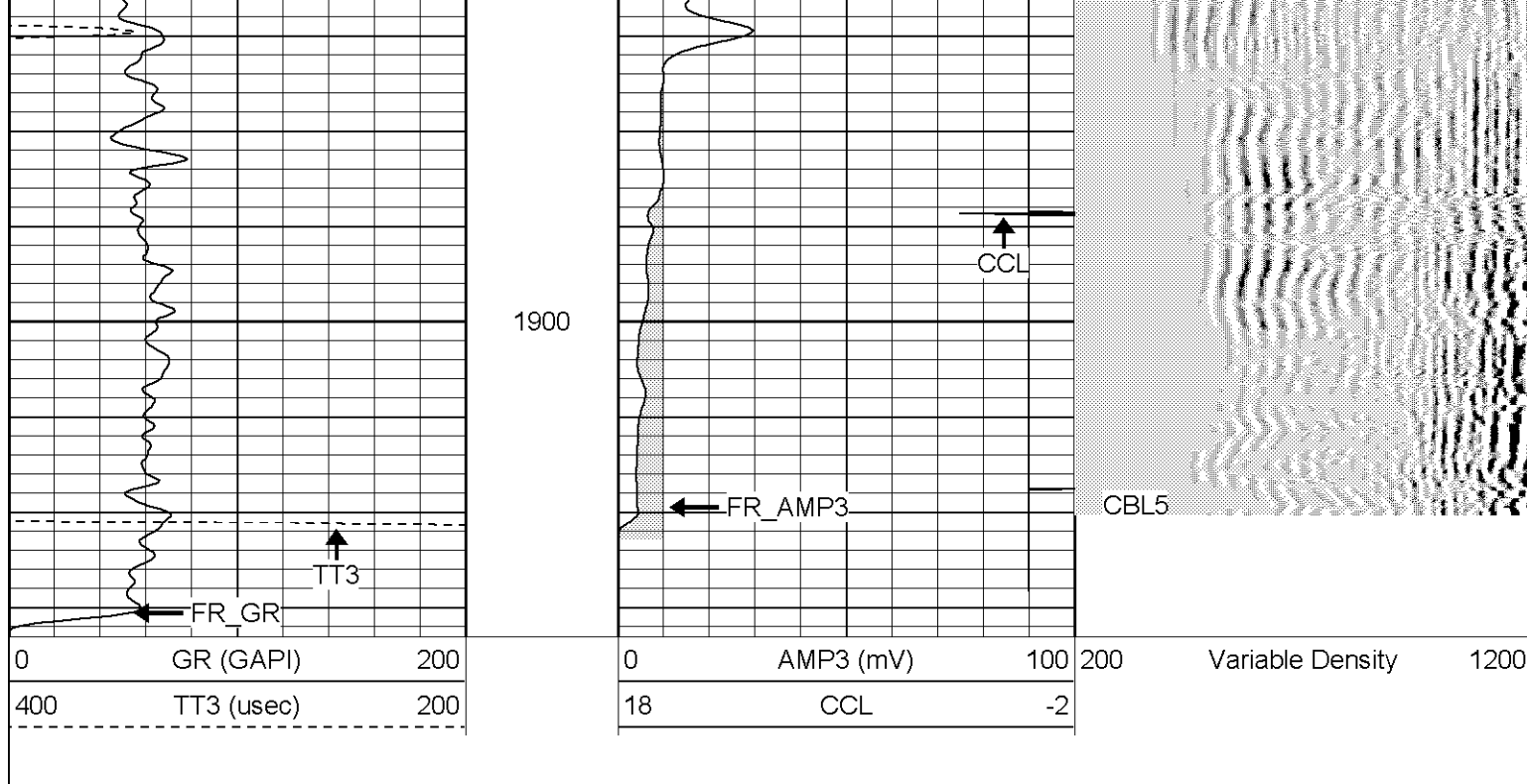
1700

1750

1800

1850



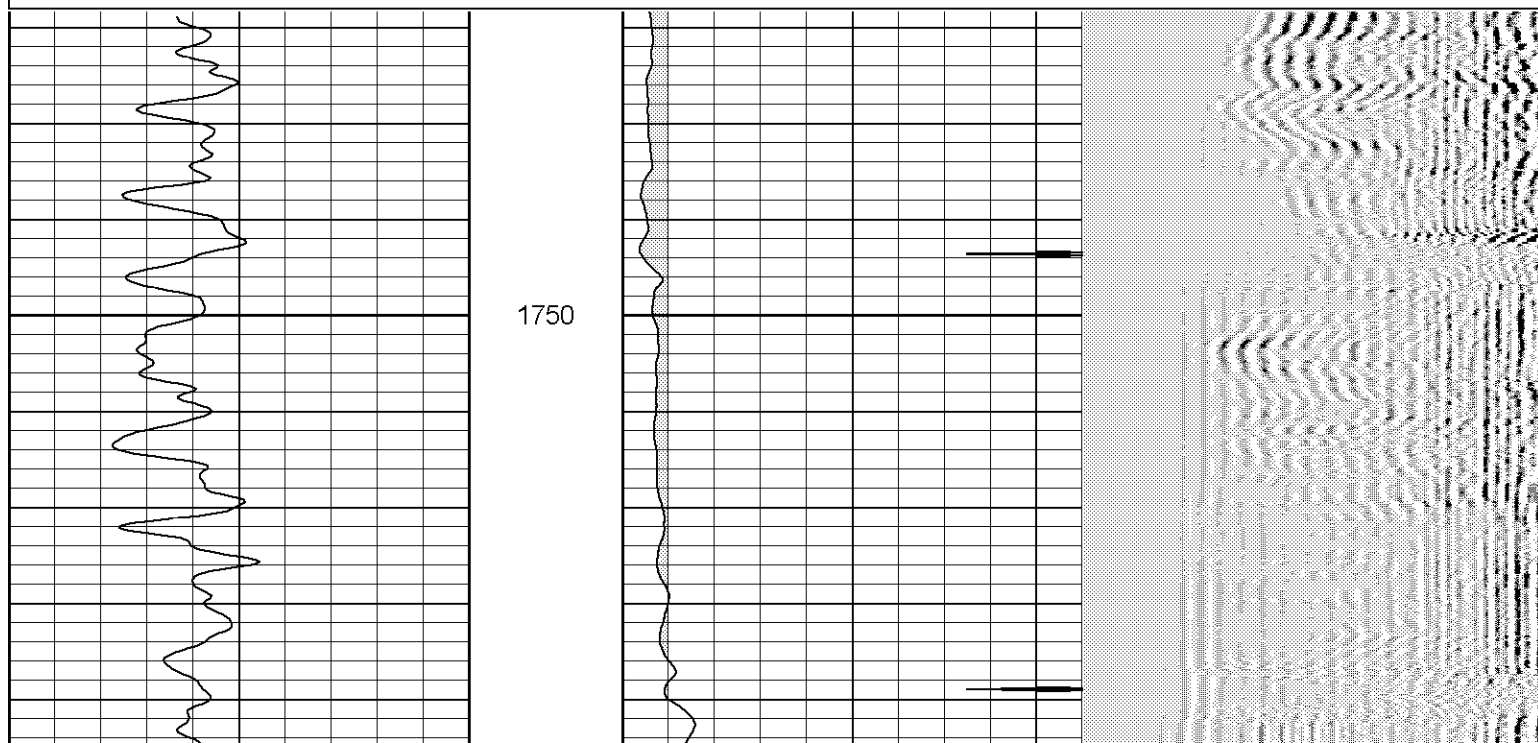


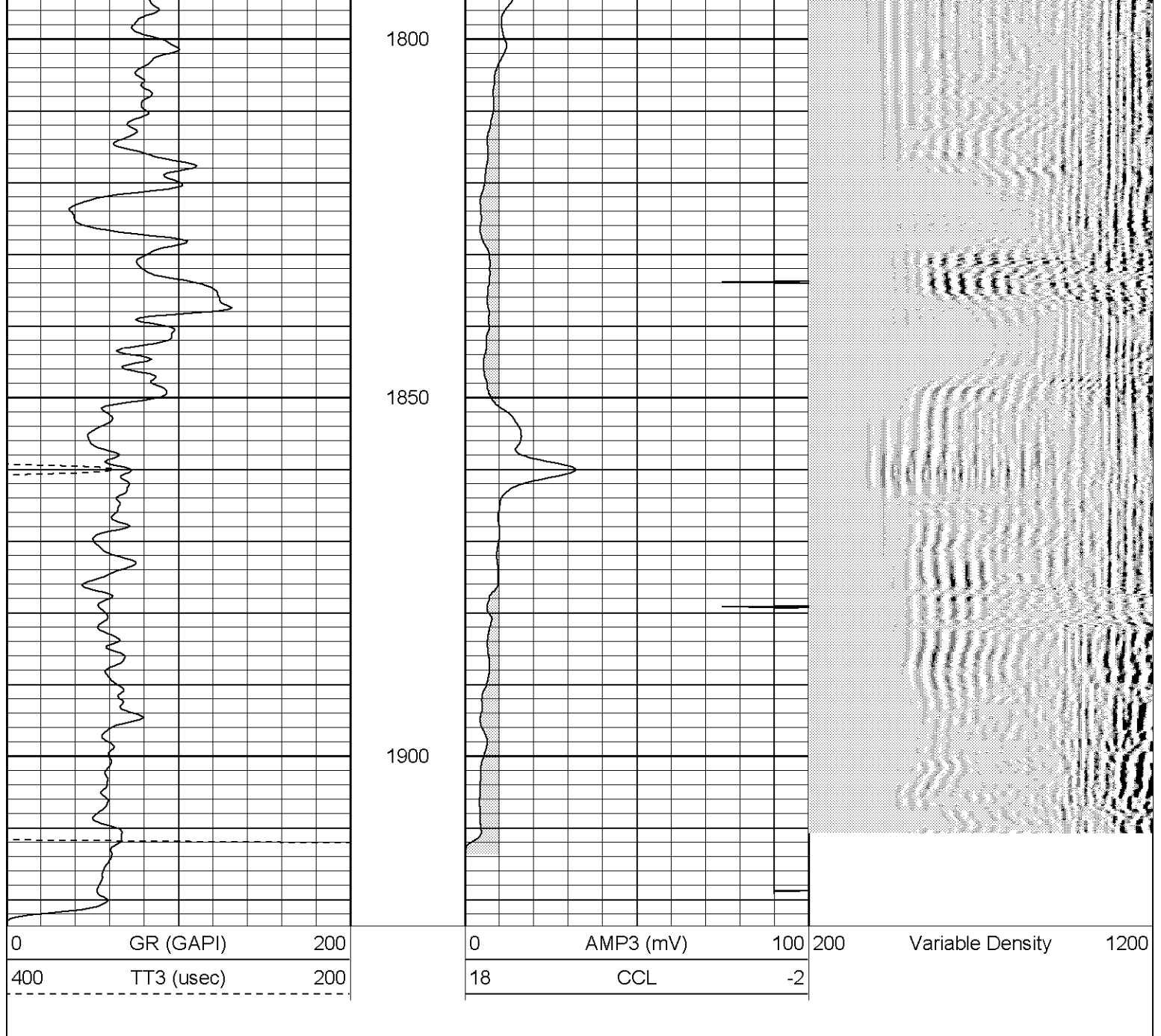
Patterson

Repeat 1000 PSI

Database File: xtoge2807x33006b.db
 Dataset Pathname: pass3
 Presentation Format: cblrt
 Dataset Creation: Thu Mar 30 17:29:26 2006 by Log Warrior 7.0 STD Ope
 Charted by: Depth in Feet scaled 1:240

0	GR (GAPI)	200	0	AMP3 (mV)	100	200	Variable Density	1200
400	TT3 (usec)	200	18	CCL	-2			





Gamma Ray Calibration Report

Serial Number:	2.75	
Tool Model:	Titan2.75	
Performed:	Mon Jan 16 14:02:16 2006	
Calibrator Value:	1.0	GAPI
Background Reading:	0.0	cps
Calibrator Reading:	1.0	cps
Sensitivity:	0.9500	GAPI/cps

Cement Bond Log Calibration Report

Serial Number:	Titan4	
Tool Model:	T4	
Performed:	Thu Mar 30 15:04:24 2006	
Depth:	1421.41	ft
Casing Diameter:	5.5	in

	3' Spacing	5' Spacing	
Signal Zero:	1	1	mV
Calibrated Amplitude:	85	85	mV
Reading at Signal Zero:	0.01	0	V
Reading in Free Pipe:	1.3	1.85	V
Gain:	65.1163	45.4054	
Offset:	0.348837	1	

Sensor	Offset (ft)	Schematic	Description	Len (ft)	OD (in)	Wt (lb)
CHD	20.38		None	0.75	1.50	5.00
CENT	19.63		X	3.00	1.69	25.00
WVF5	12.82		CBL-T4 (Titan4) Titan4	8.15	2.25	110.00
WVF3	11.82					
CENT	8.48		X	3.00	1.69	25.00
CCL	4.27		CCL-Titan2.75 (2.75)	1.71	2.75	15.00
GR	1.42		GR-Titan2.75 (2.75)	3.77	2.75	40.00
Dataset: /field/well/run/_plots/_jobs/cbl Total Length: 20.38 ft Total Weight: 220.00 lb O.D. 2.75 in						