

Patterson

**CEMENT BOND
GAMMA RAY
LOG**

CompanyXTO Energy Inc.		Company XTO Energy Inc.	
Well	Apache Canyon 05-12-2		
Field	Purgatorie River		
County	Las Animas	State	Co
State	Co	County	Las Animas
Location:		AP1 # : 05 071 08748 00	Other Services
SEC 5 TWP 34S RGE 67W			
Permanent Datum	Ground Level	Elevation	7577'
Log Measured From	Ground Level		
Drilling Measured From	Ground Level		
Elevation K.B. ----- D.F. ----- G.L. 7577'			
Date	7-7-06		
Run Number	One		
Depth Driller	2154'		
Depth Logger	2090'		
Bottom Logged Interval	2088'		
Top Log Interval	Surf.		
Open Hole Size	7 7/8"		
Type Fluid	water		
Density / Viscosity	///		
Max. Recorded Temp.	///		
Estimated Cement Top	1070'		
Time Well Ready	12:30PM		
Time Logger on Bottom	12:45PM		
Equipment Number	T244		
Location	Trinidad		
Recorded By	Worley		
Witnessed By			
Borehole Record			
Run Number	Bit	From	To
		Size	Weight
		From	To
Casing Record	Size	Wgt/Ft	Top
Surface String	8 5/8"		00
Prot. String			225'
Production String	5 1/2"		00
Liner			NA

<<< Fold Here >>>

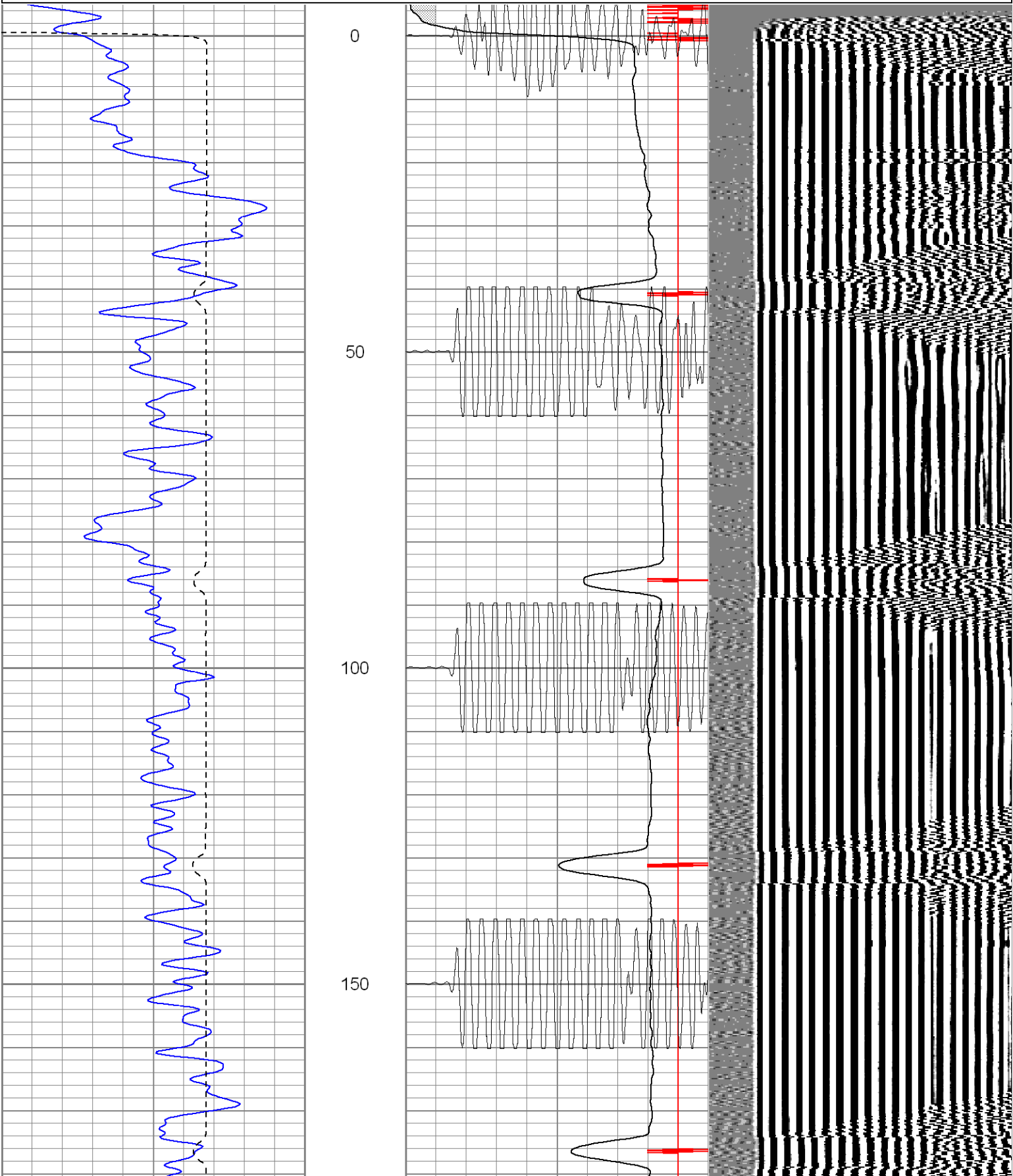
All interpretations are opinions based on inferences from electrical or other measurements and we cannot and do not guarantee the accuracy or correctness of any interpretation, and we shall not, except in the case of gross or willful negligence on our part, be liable or responsible for any loss, costs, damages, or expenses incurred or sustained by anyone resulting from any interpretation made by any of our officers, agents or employees. These interpretations are also subject to our general terms and conditions set out in our current Price Schedule.

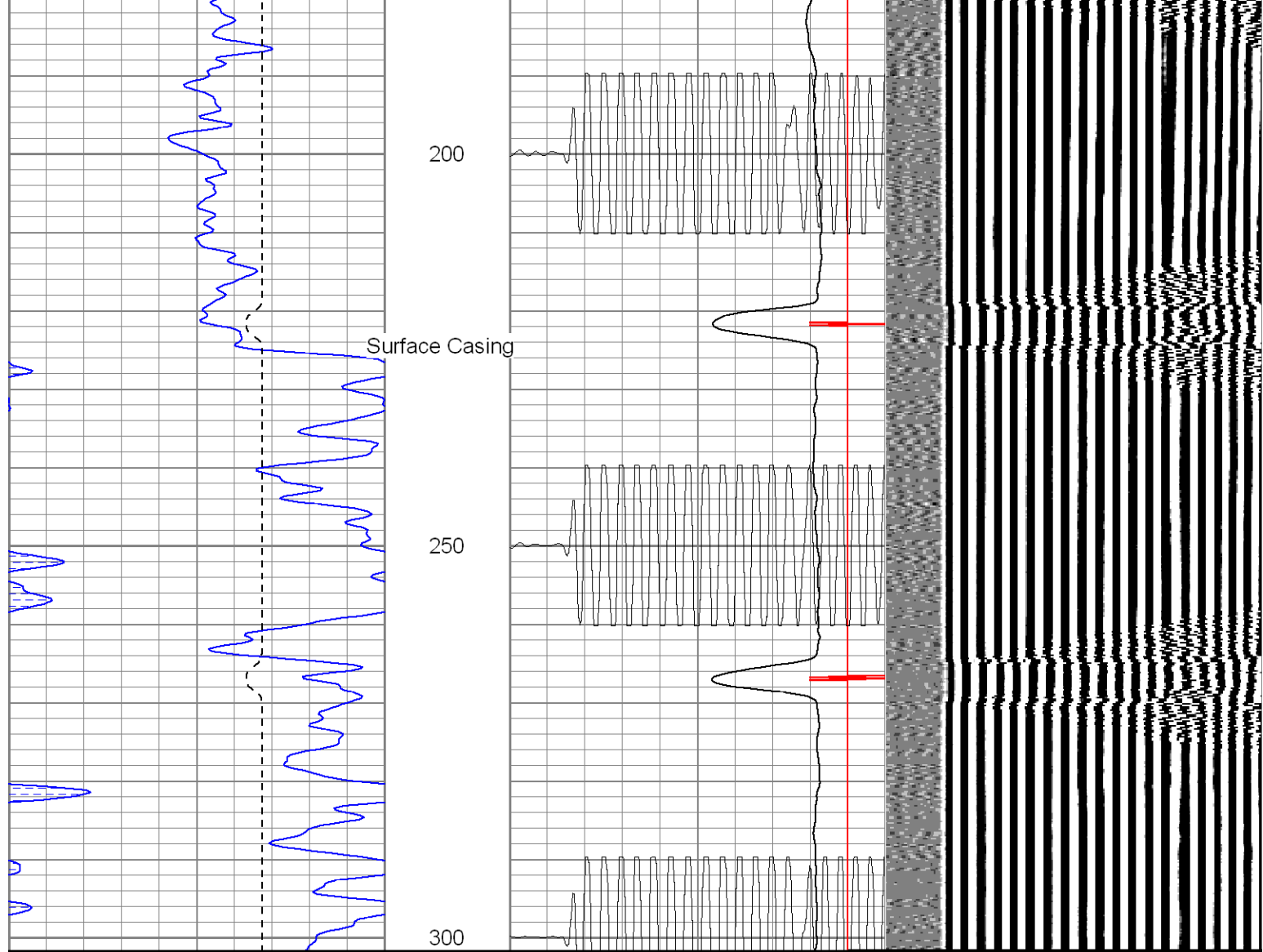
Comments

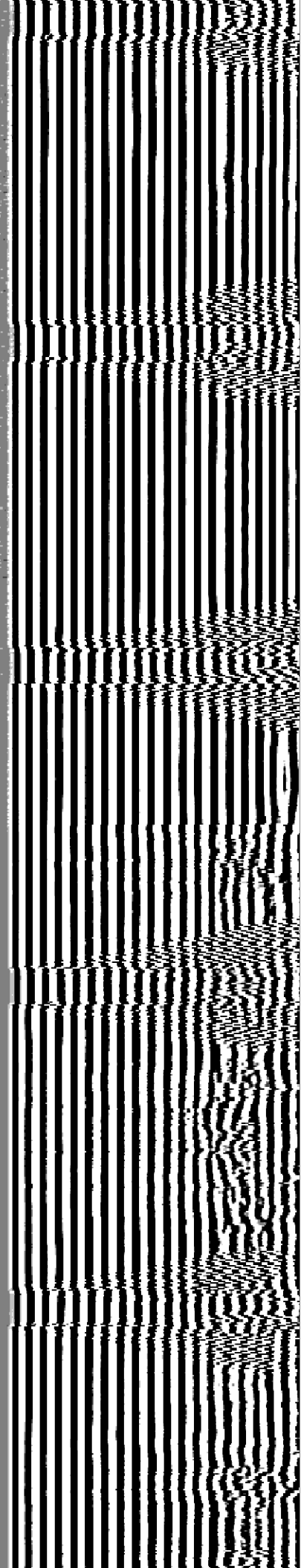
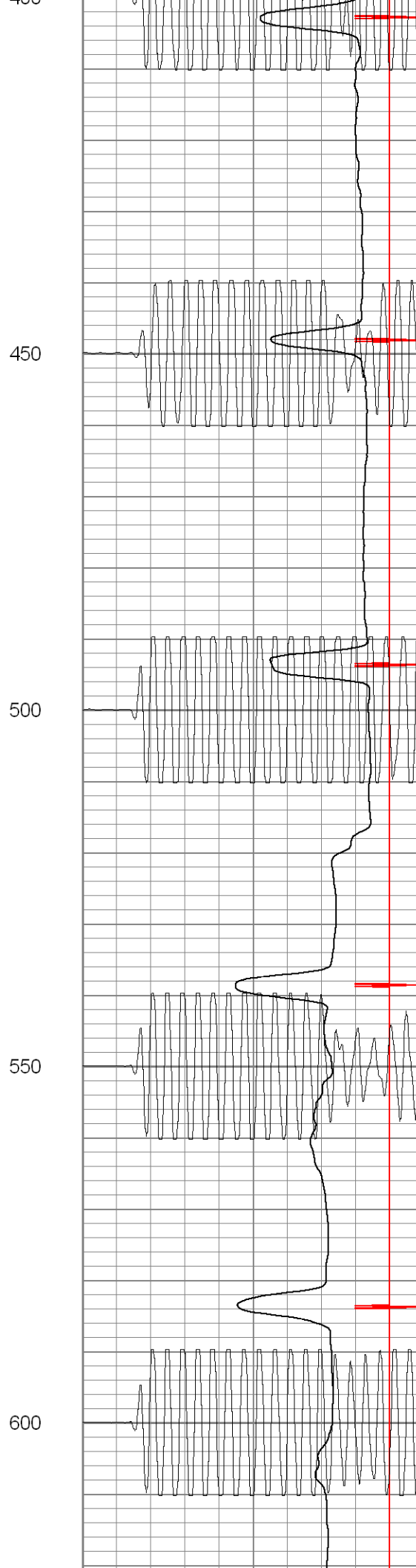
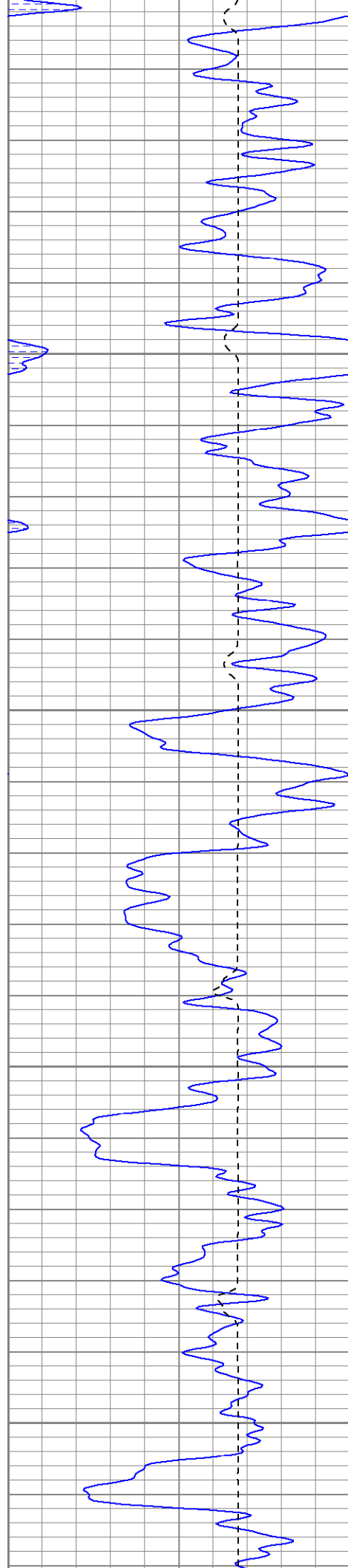
Turn At Bosque Before Weston, Turn Right At Alamosito, First Right after Gate, go 1.75Miles, Location on Left

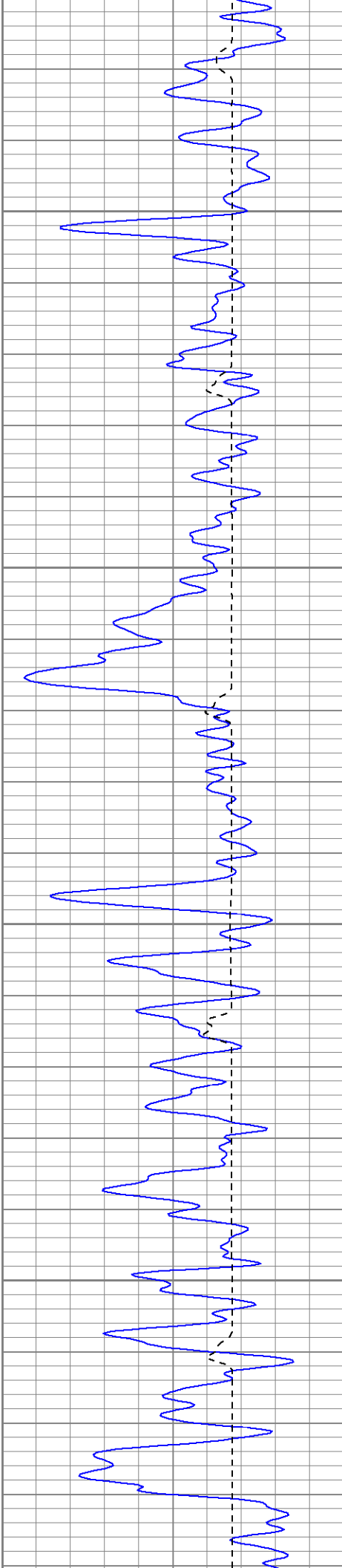
Database File: ac51227706b.db
Dataset Pathname: pass2
Presentation Format: cblrt
Dataset Creation: Fri Jul 07 13:05:32 2006 by Log Warrior 7.0 STD Cas
Charted by: Depth in Feet scaled 1:240

0	GR (GAPI)	200	0	AMP3 (mV)	100	200	Variable Density	1200
400	TT3 (usec)	200	18	CCL	-2			
			200	CBL5	1200			







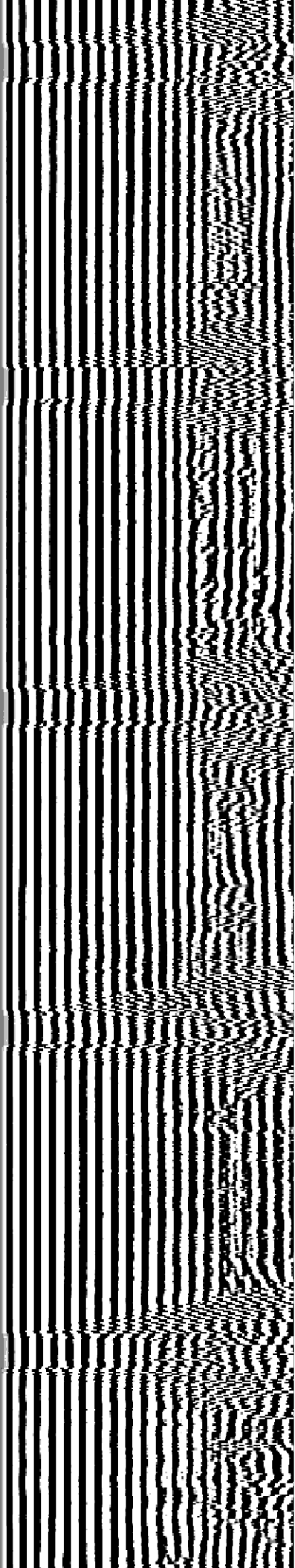
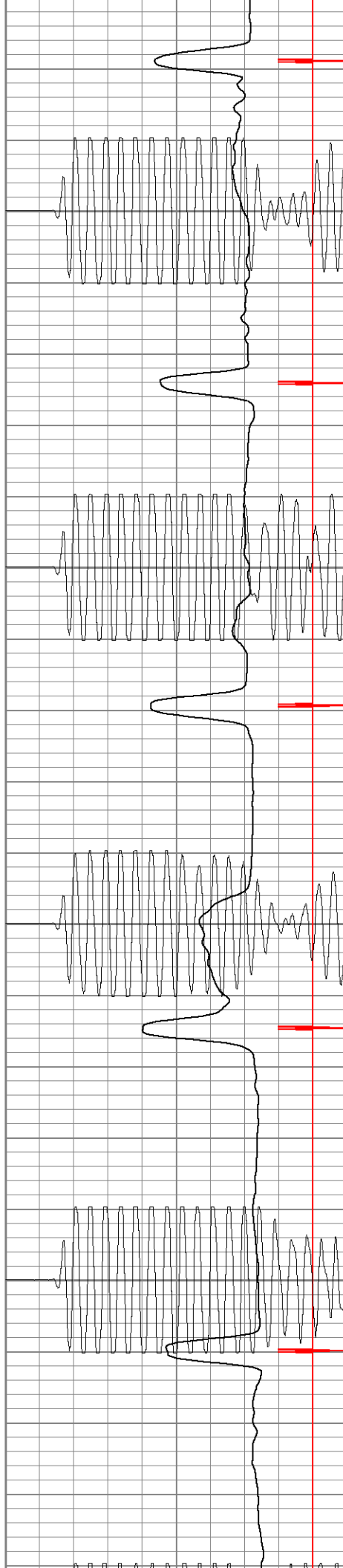


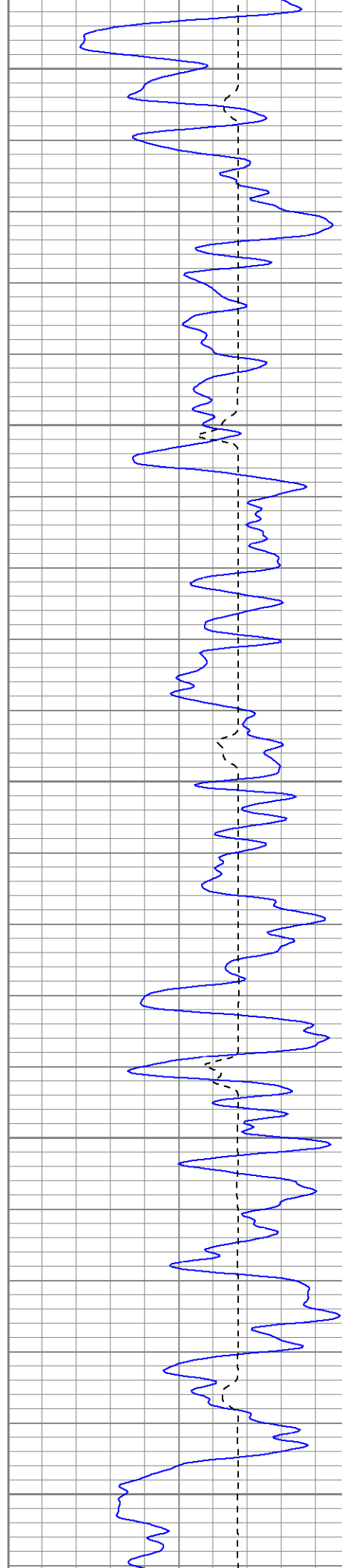
650

700

750

800





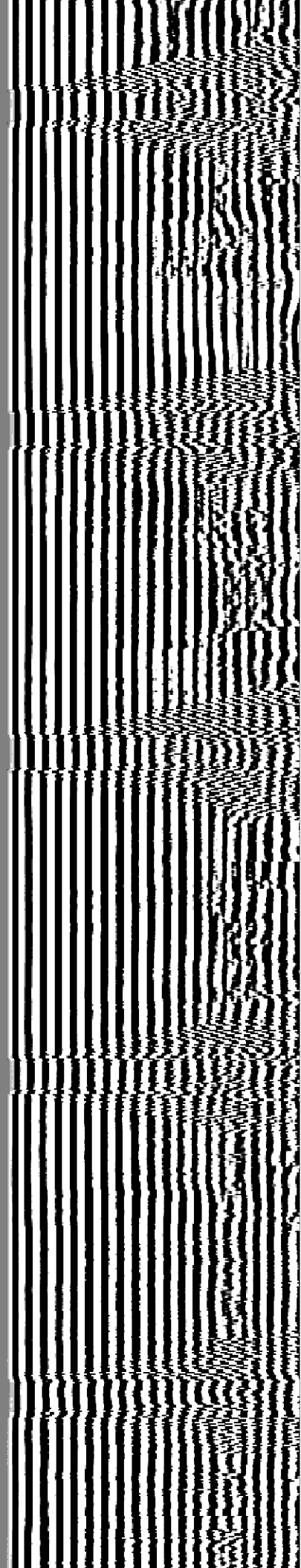
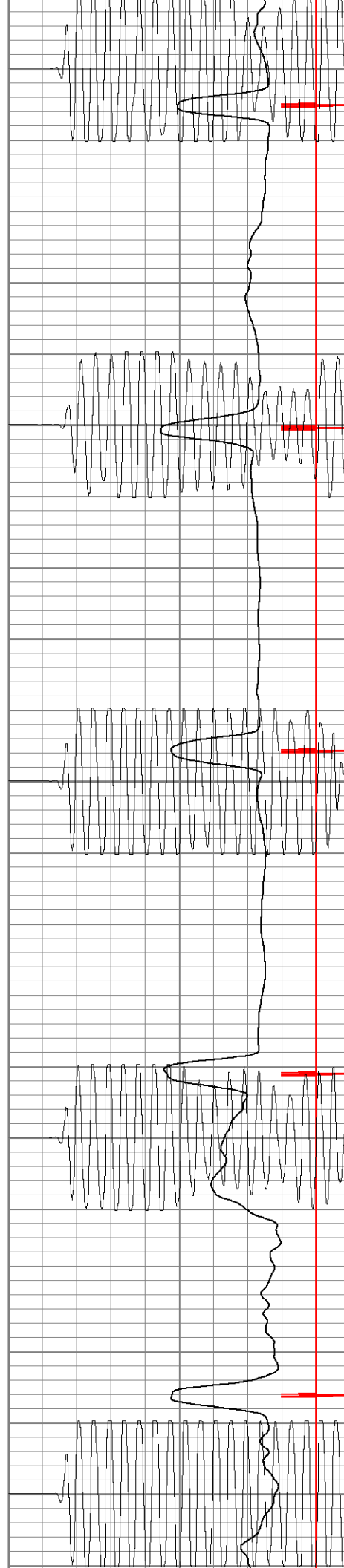
850

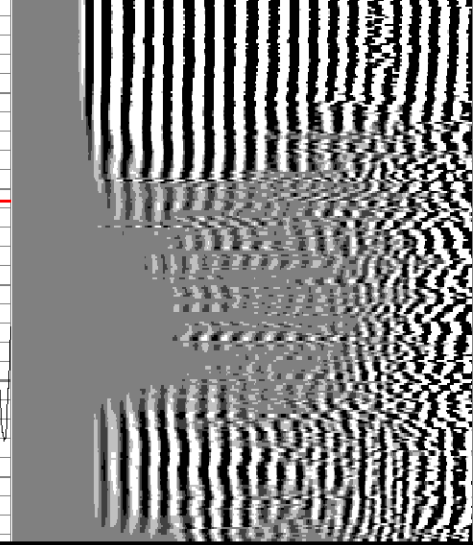
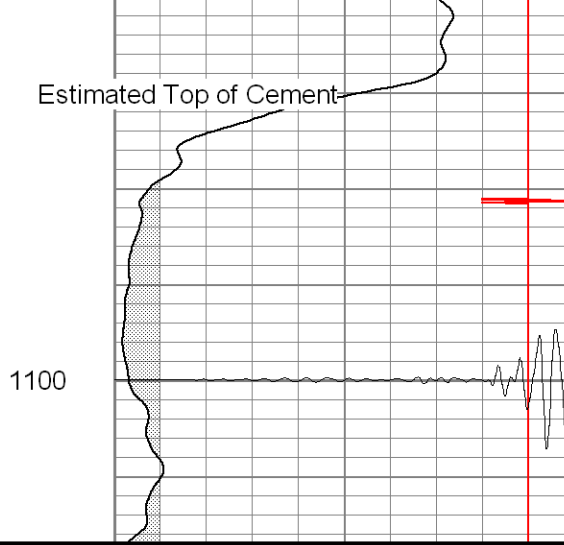
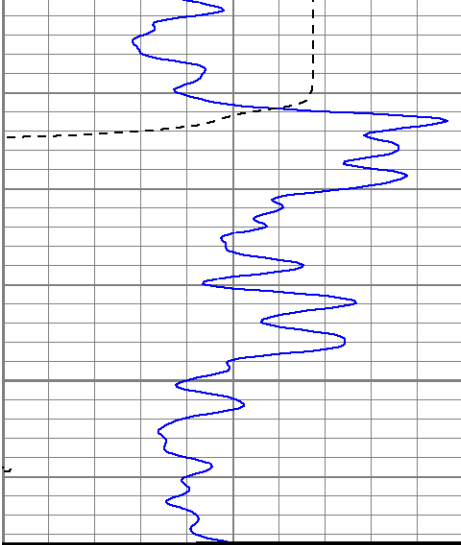
900

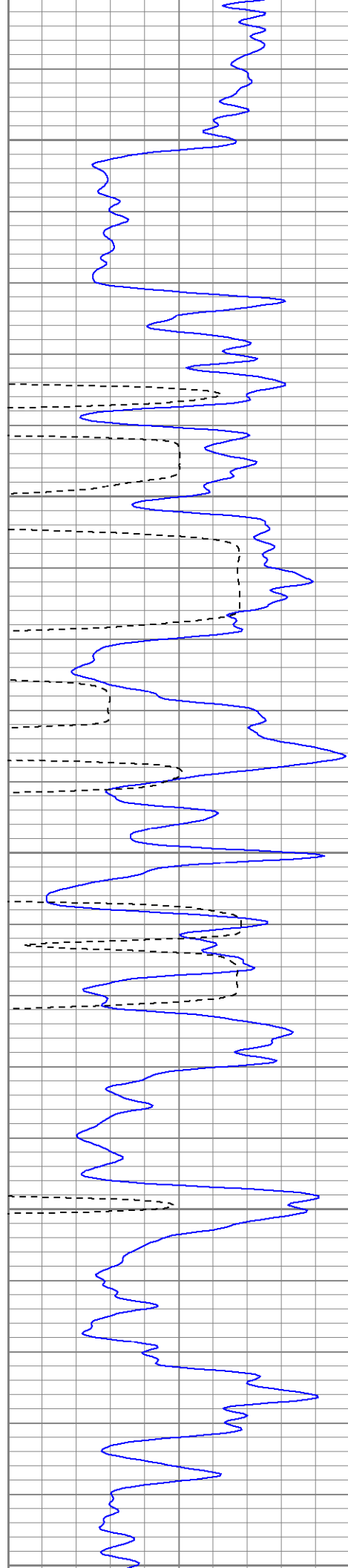
950

1000

1050







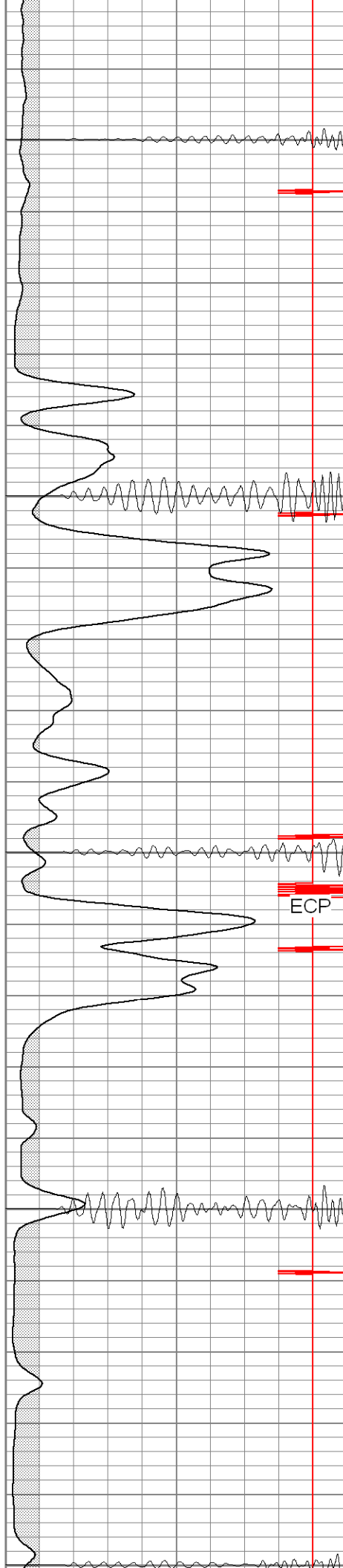
1300

1350

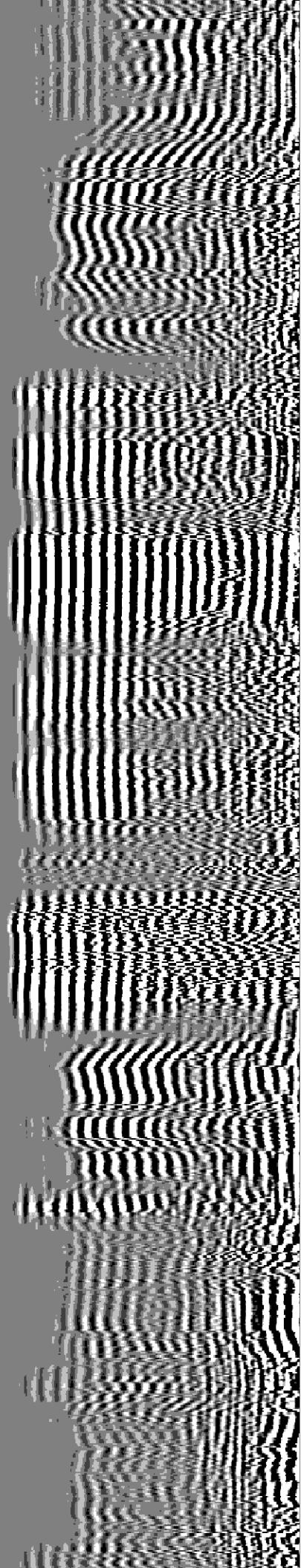
1400

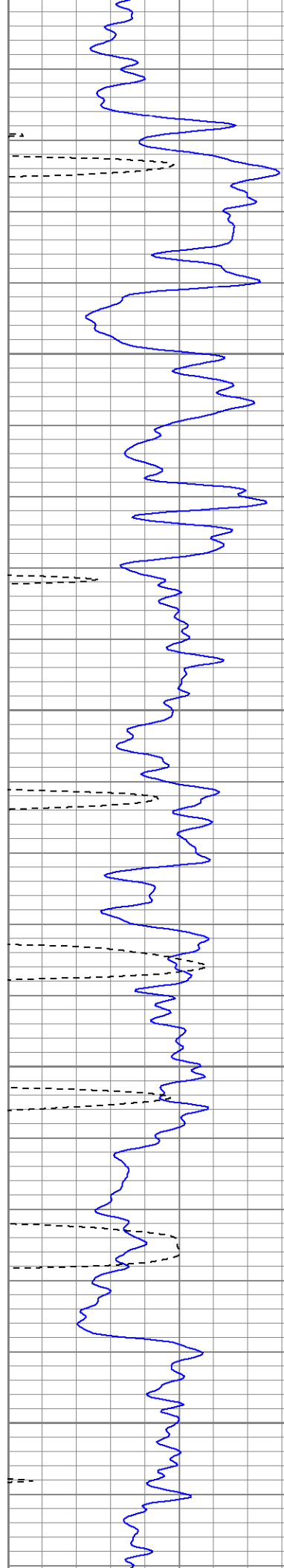
1450

1500

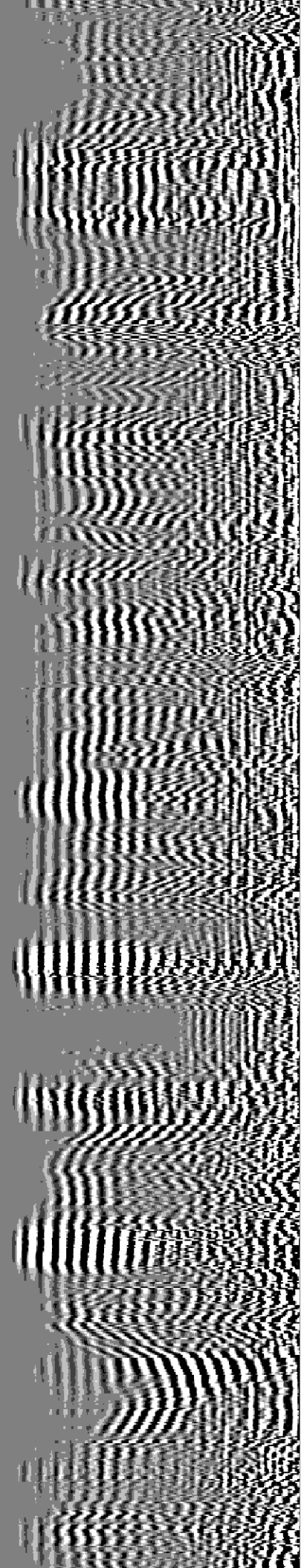
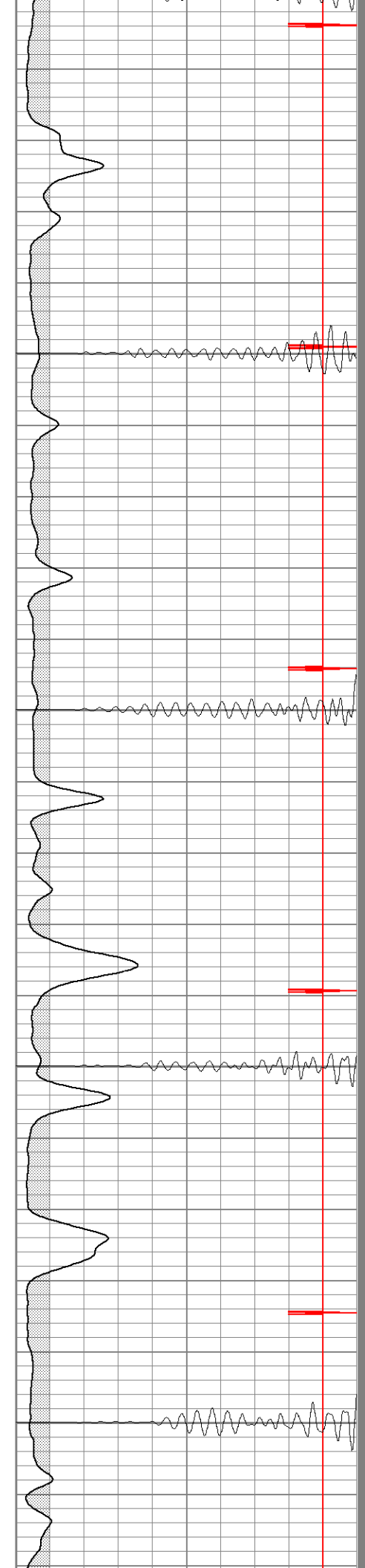


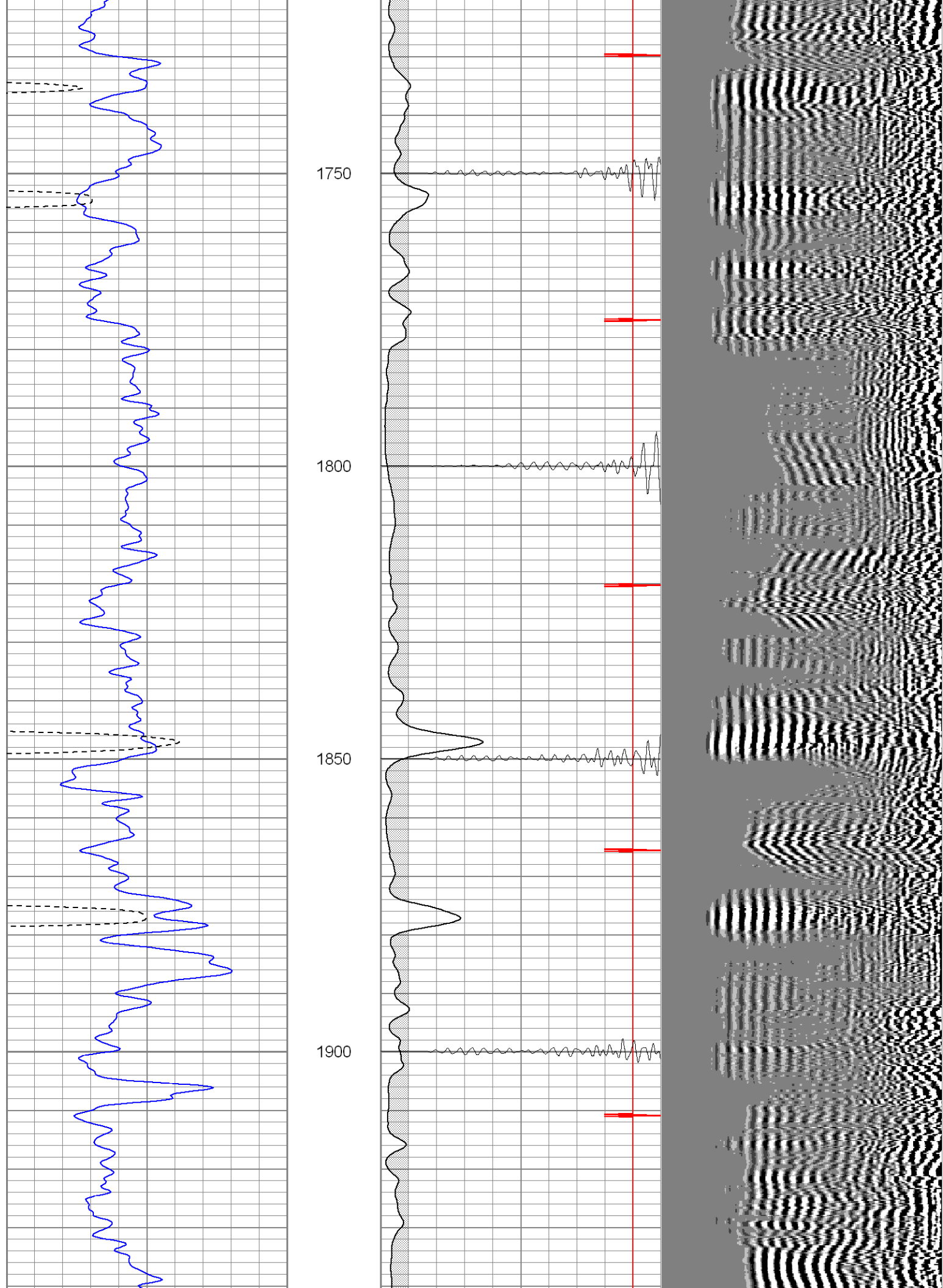
ECP

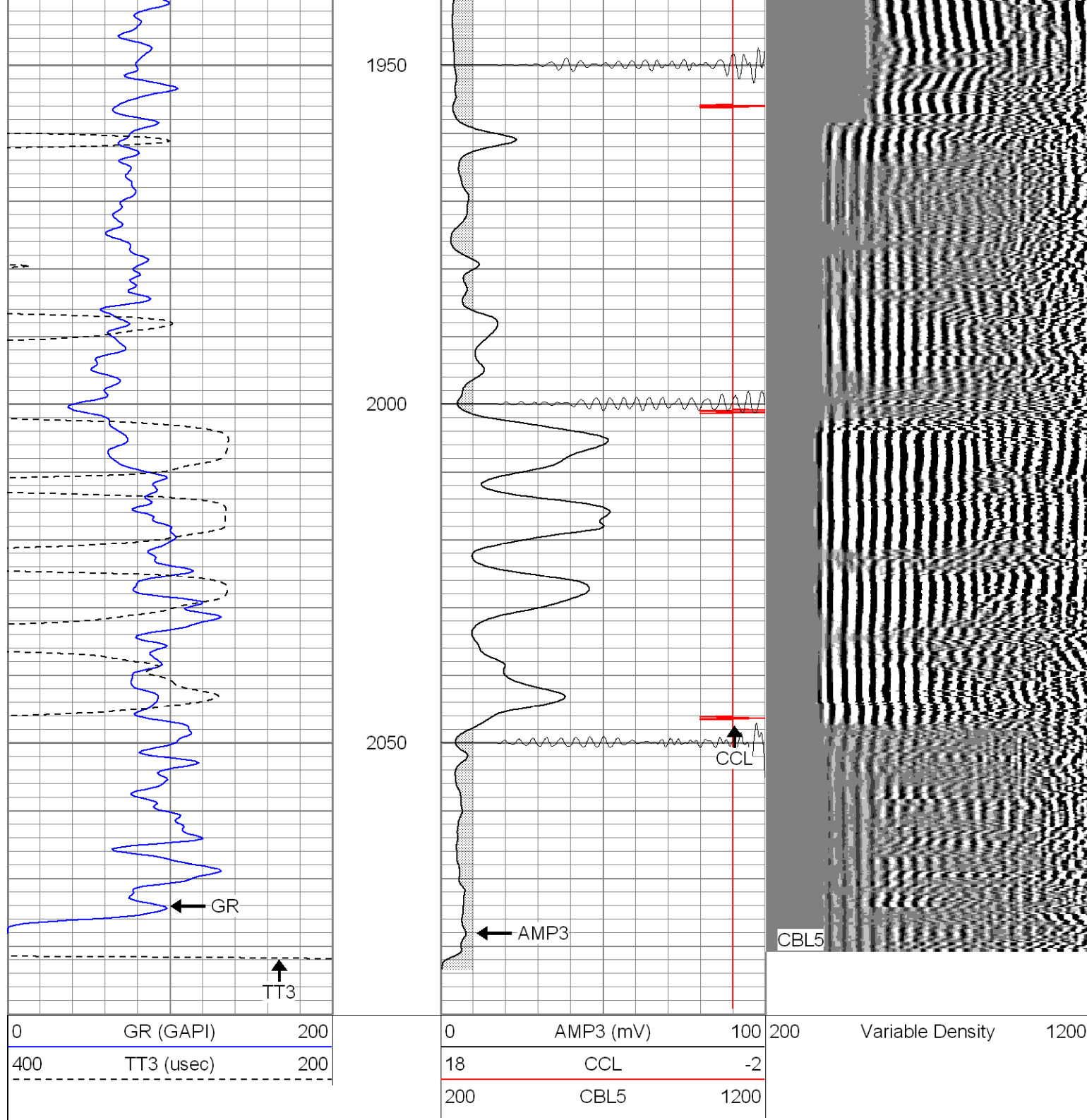




1500
1550
1600
1650
1700





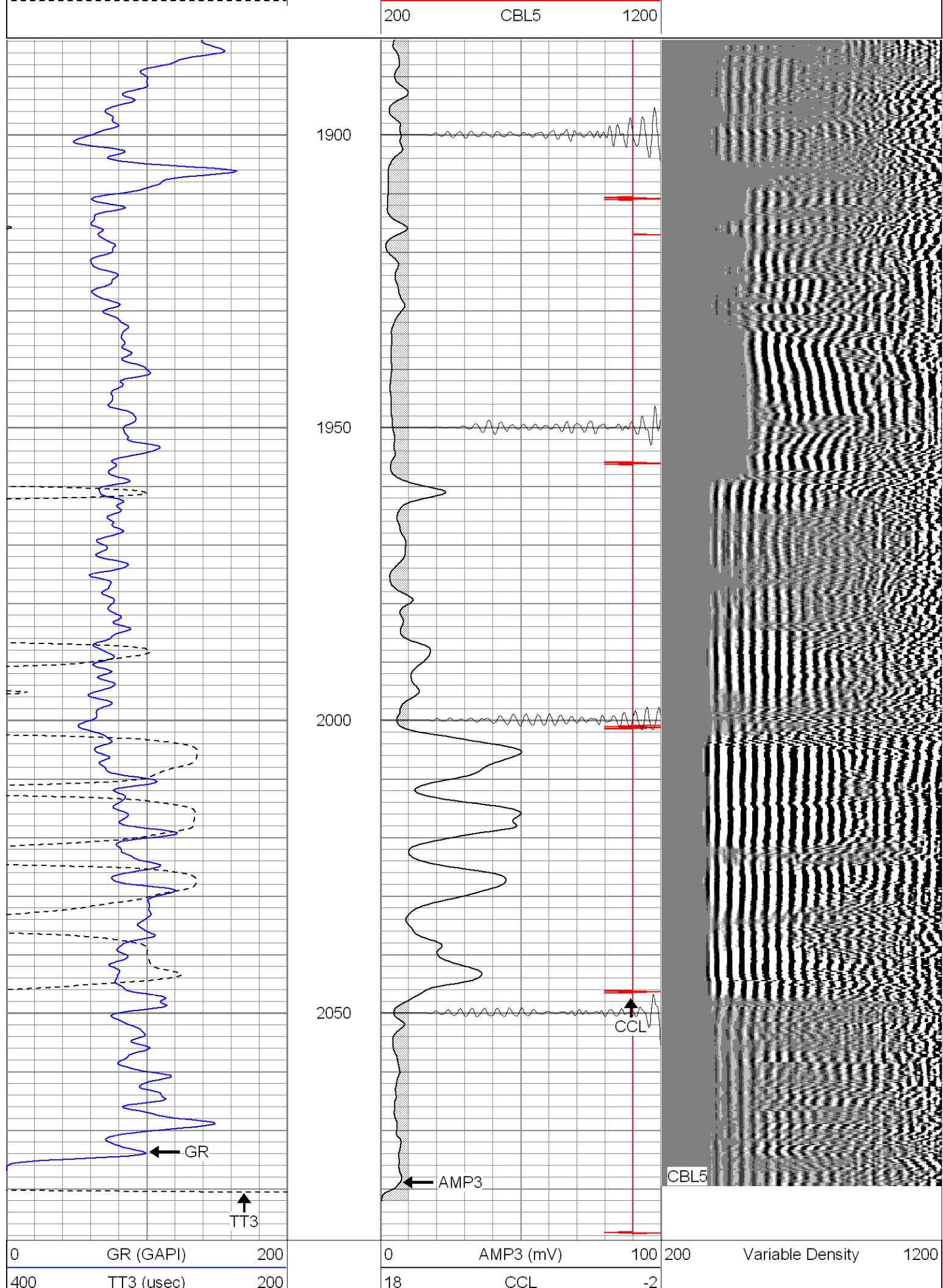


Patterson

Repeat Section

Database File: ac51227706b.db
 Dataset Pathname: pass1
 Presentation Format: cblrt
 Dataset Creation: Fri Jul 07 12:56:44 2006 by Log Warrior 7.0 STD Cas
 Charted by: Depth in Feet scaled 1:240

0	GR (GAPI)	200	0	AMP3 (mV)	100	200	Variable Density	1200
400	TT3 (usec)	200	18	CCL	-2			



	200	CBL5	1200
--	-----	------	------

Cement Bond Log Calibration Report			
Serial Number:	Titan5		
Tool Model:	2		
Performed:	Fri Jun 30 09:59:30 2006		
Depth:	295.435	ft	
Casing Diameter:	5.5	in	
	3' Spacing	5' Spacing	
Signal Zero:	0	0	mV
Calibrated Amplitude:	85	85	mV
Reading at Signal Zero:	-0.01	0.00878906	V
Reading in Free Pipe:	1.5	1.4	V
Gain:	56.2914	61.0979	
Offset:	0.562914	-0.536993	

Gamma Ray Calibration Report			
Serial Number:	Titan5		
Tool Model:	T2		
Performed:	Fri Jun 30 09:59:33 2006		
Calibrator Value:	1.0	GAPI	

