

Patterson

**CEMENT BOND
GAMMA RAY
LOG**

Company		XTO Energy, Inc.	
Well		Apache Canyon 12-04	
Field		Purgatoire River	
County		Las Animas	
State		CO	
Company		XTO Energy, Inc.	
Well		Apache Canyon 12-04	
Field		Purgatoire River	
County		Las Animas	
State		CO	
Location:		API # : 05 071 08746 00	
SEC 12 TWP 34S RGE 68W		272 FNL & 146' FWL	
Permanent Datum		Ground Level	
Log Measured From		Ground Level	
Drilling Measured From		Ground Level	
Elevation		8446'	
Other Services		Pressure Control	
K.B. -----		Elevation	
D.F. -----		8446'	
G.L. 8446'			
Date		8-14-06	
Run Number		One	
Depth Driller		2500'	
Depth Logger		2427'	
Bottom Logged Interval		2425'	
Top Log Interval		Surface	
Open Hole Size		7 7/8"	
Type Fluid		Water	
Density / Viscosity		///	
Max. Recorded Temp.		104F	
Estimated Cement Top		1544'	
Time Well Ready		ROA	
Time Logger on Bottom		1:00PM	
Equipment Number		1875	
Location		Trinidad	
Recorded By		E. Ray	
Witnessed By		Mr. Ryan Rensink	
Run Number		Borehole Record	
Bit		From	
To		Size	
Weight		From	
To		Tubing Record	
Casing Record		Size	
Surface String		8 5/8"	
Prot. String		Wgt/Ft	
Production String		Top	
Liner		5 1/2"	
		00	
		Bottom	
		804'	
		N/A	

<<< Fold Here >>>

All interpretations are opinions based on inferences from electrical or other measurements and we cannot and do not guarantee the accuracy or correctness of any interpretation, and we shall not, except in the case of gross or willful negligence on our part, be liable or responsible for any loss, costs, damages, or expenses incurred or sustained by anyone resulting from any interpretation made by any of our officers, agents or employees. These interpretations are also subject to our general terms and conditions set out in our current Price Schedule.

Comments

Turn @ Bosque before Weston, Right on Torres Canyon, Stay on Main Road to Y and Go Right,
1st Location on the Right

1000 PSI on Main Pass
0 PSI on Repeat Section

Patterson

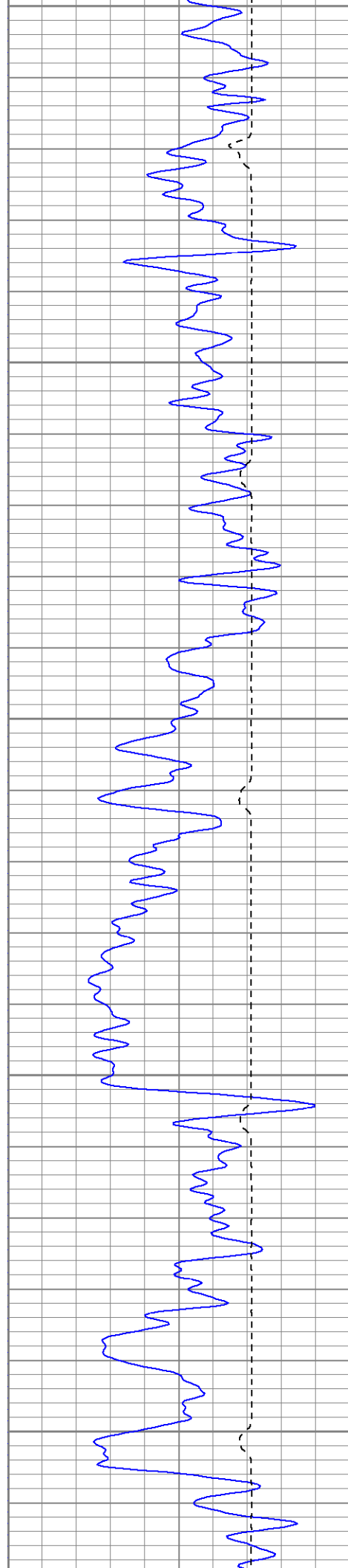
Main Pass (1000PSI)

Database File: ac120481406b.db

Dataset Pathname: pass2.1

Presentation Format: cblrt

Dataset Creation: Mon Aug 14 14:51:20 2006 by Gale Open Speed 060407



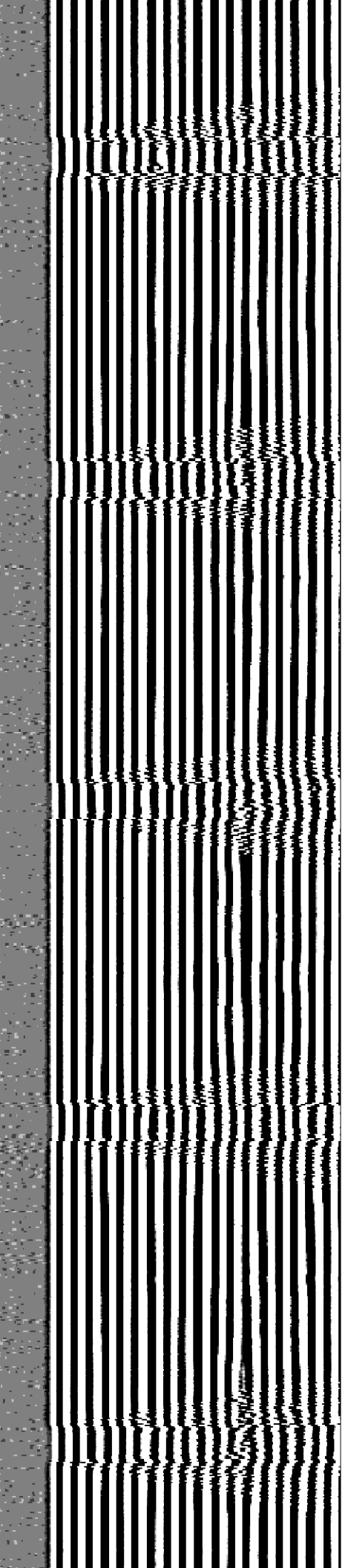
200

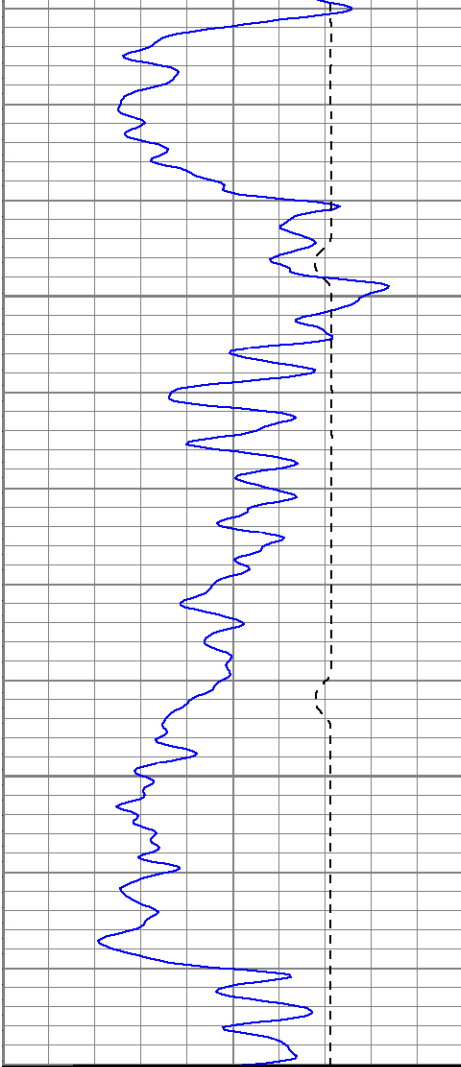
250

300

350

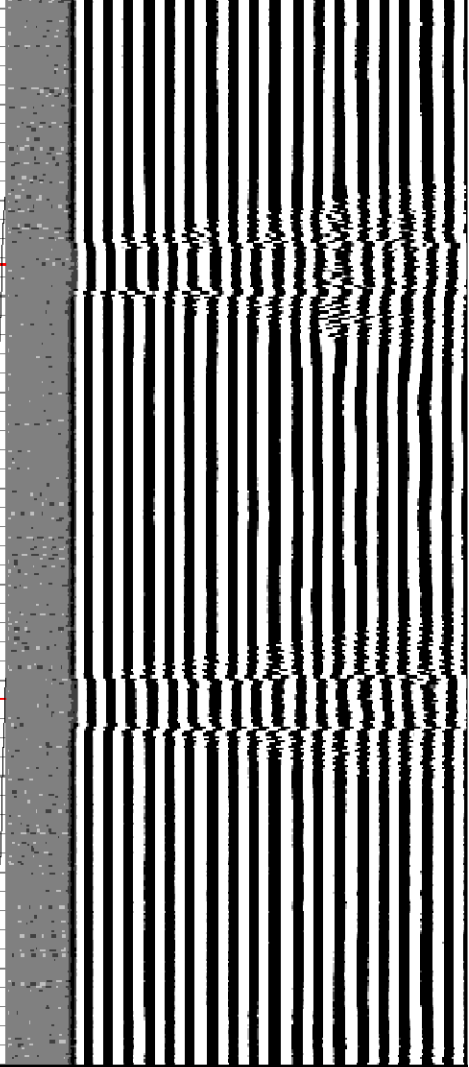
400

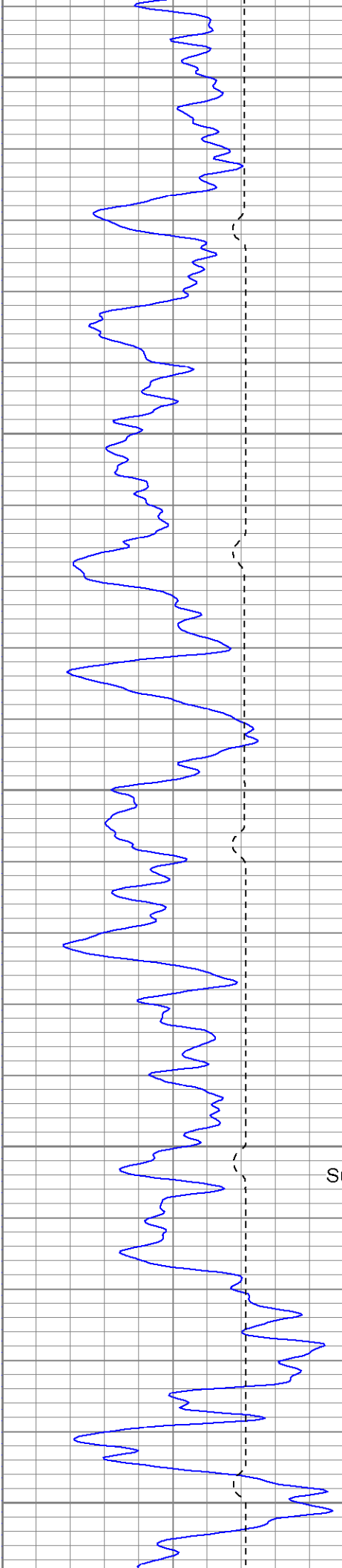




450

500





650

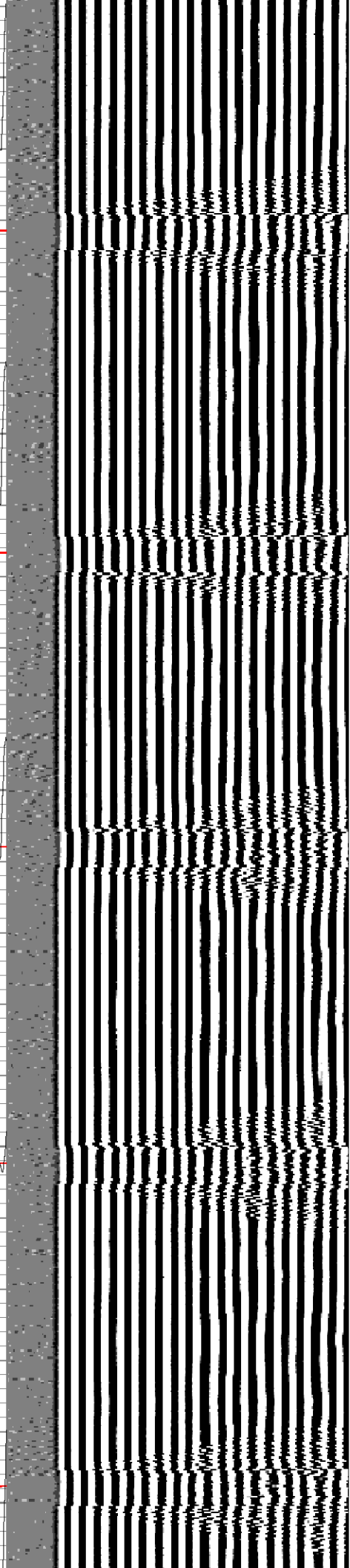
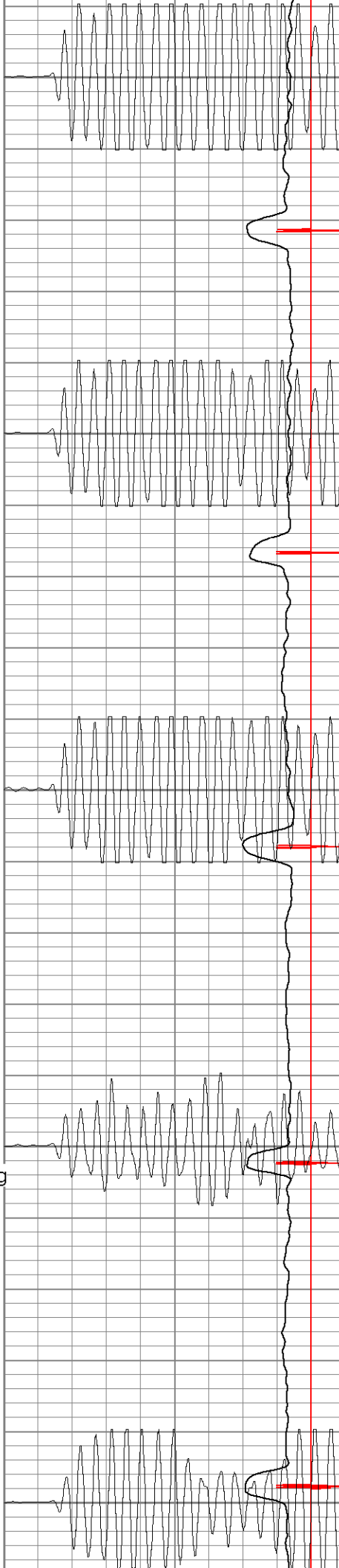
700

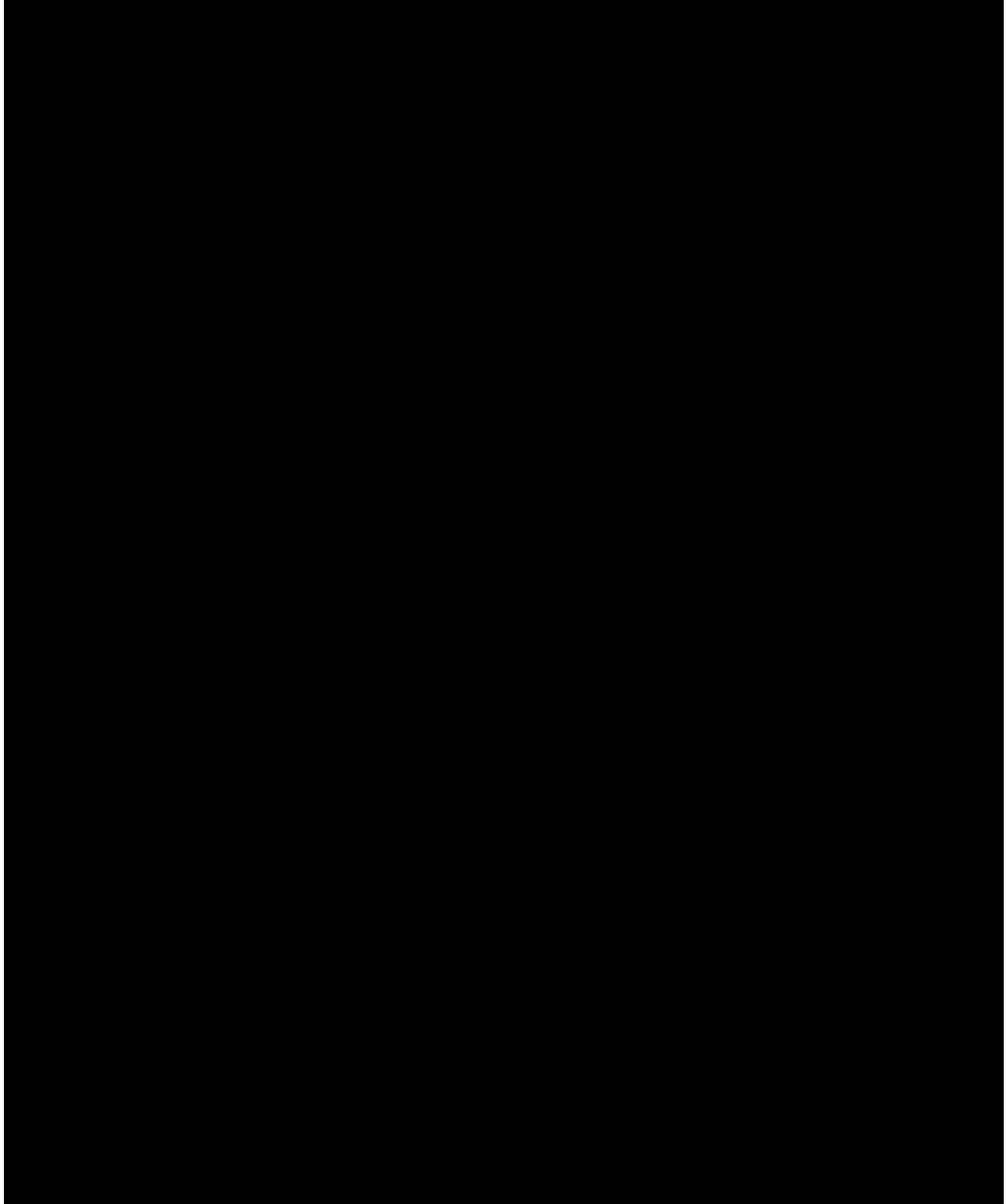
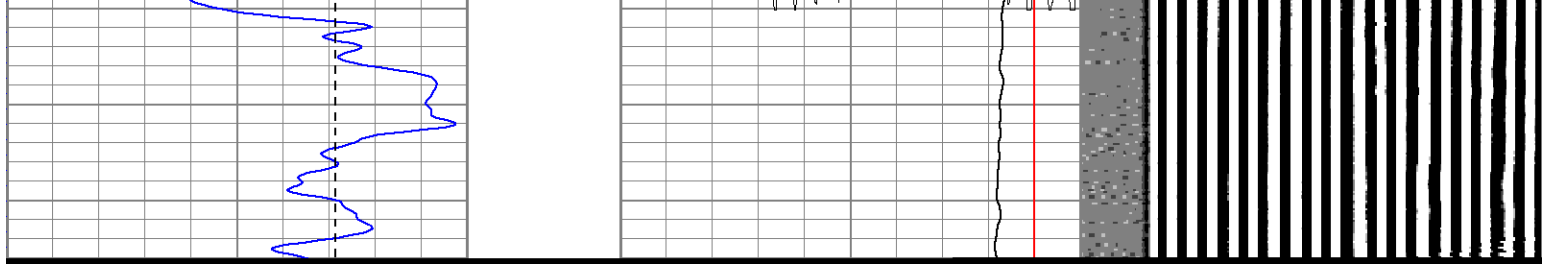
750

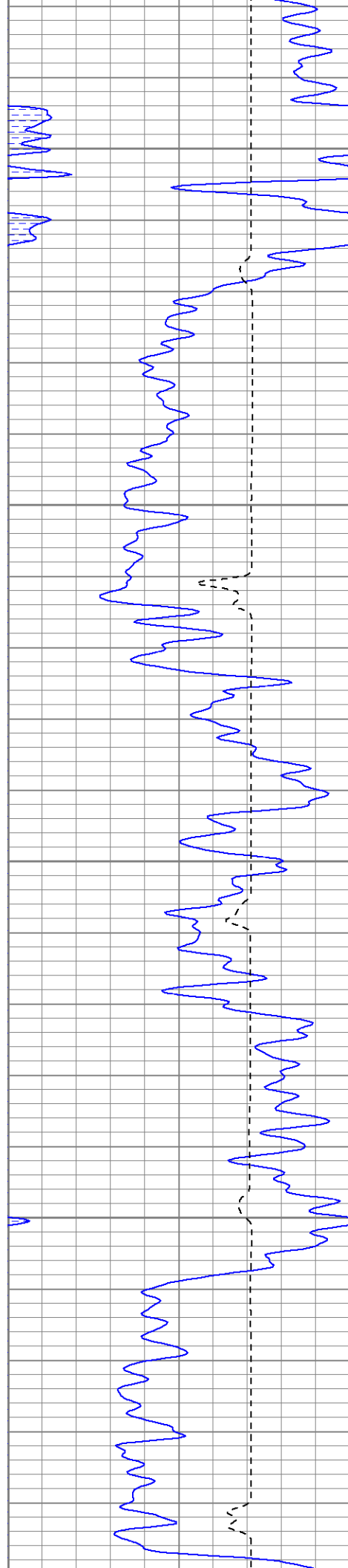
800

Surface Casing

850







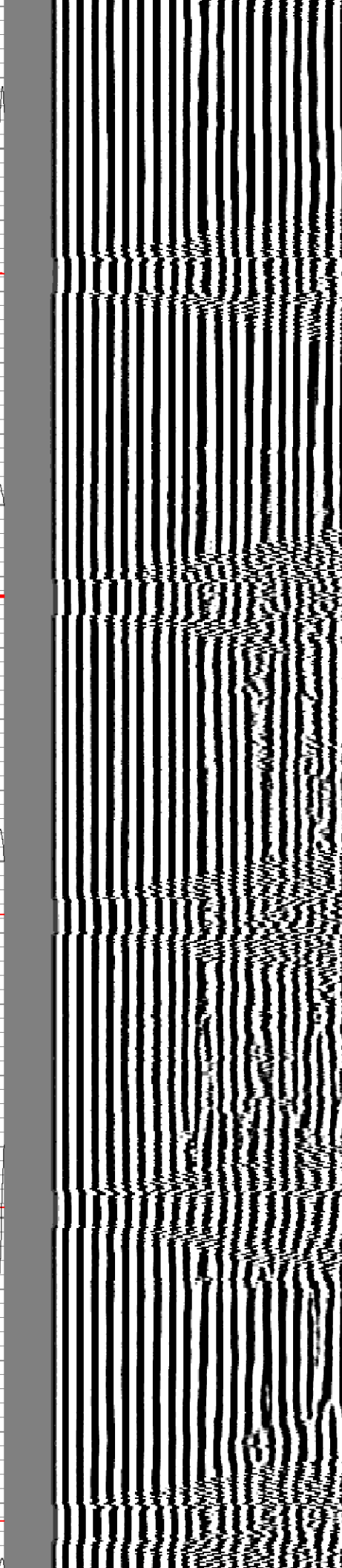
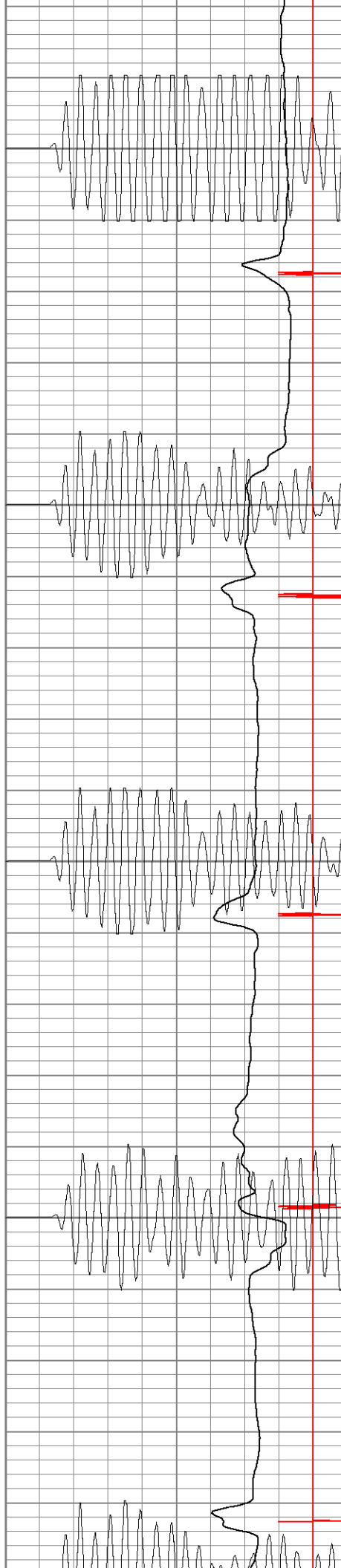
1100

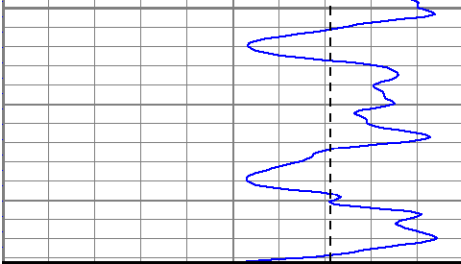
1150

1200

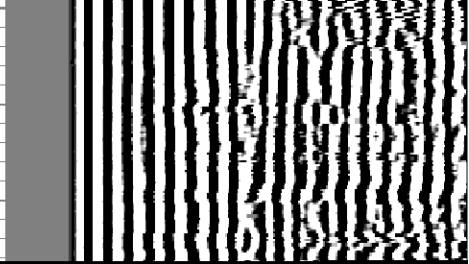
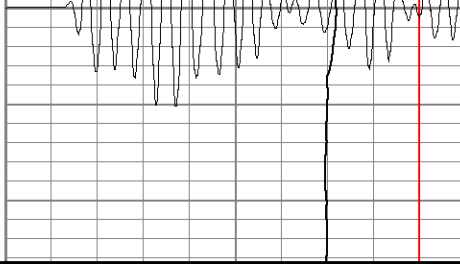
1250

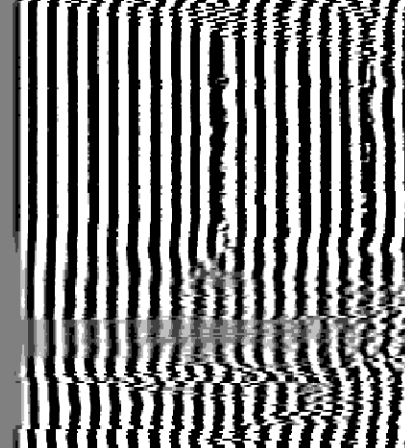
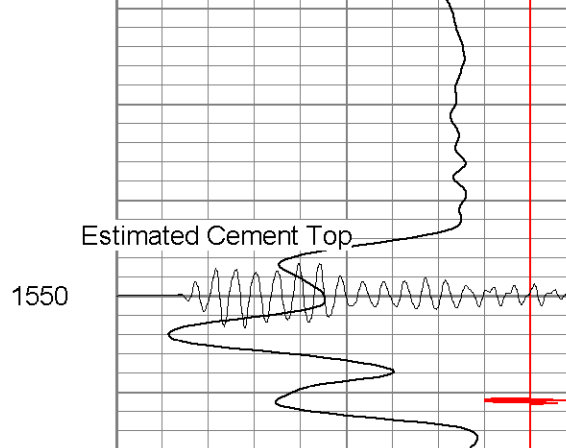
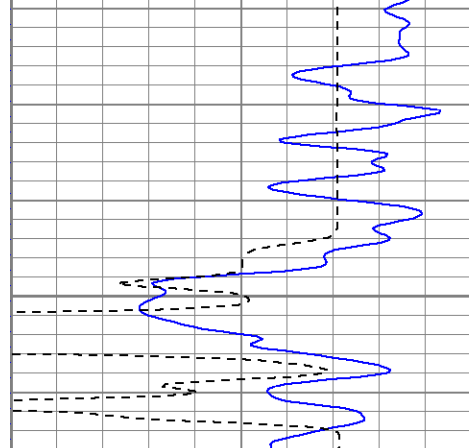
1300

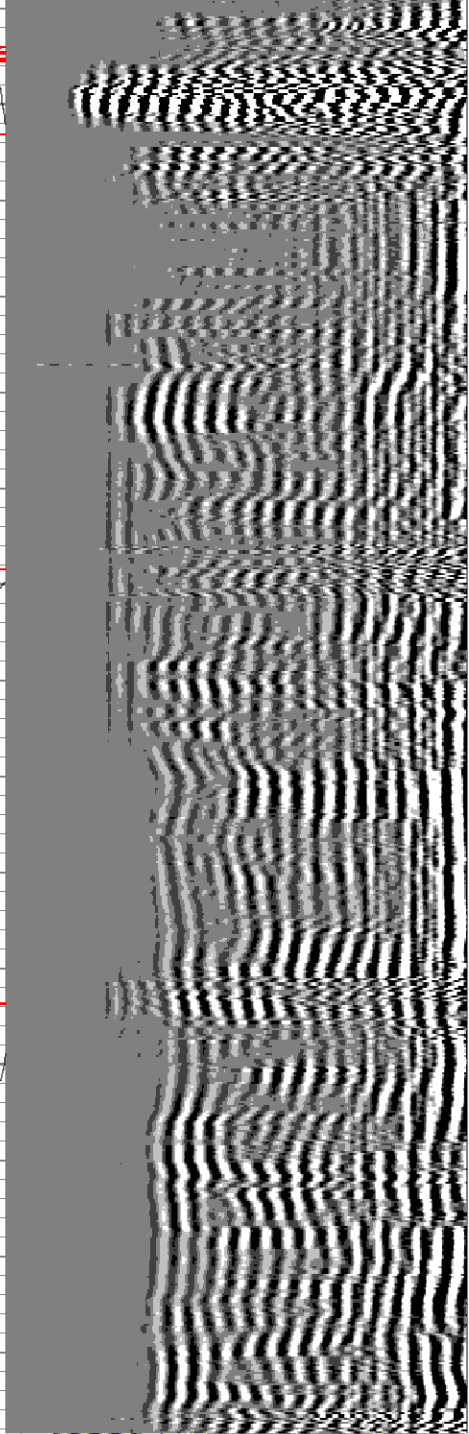
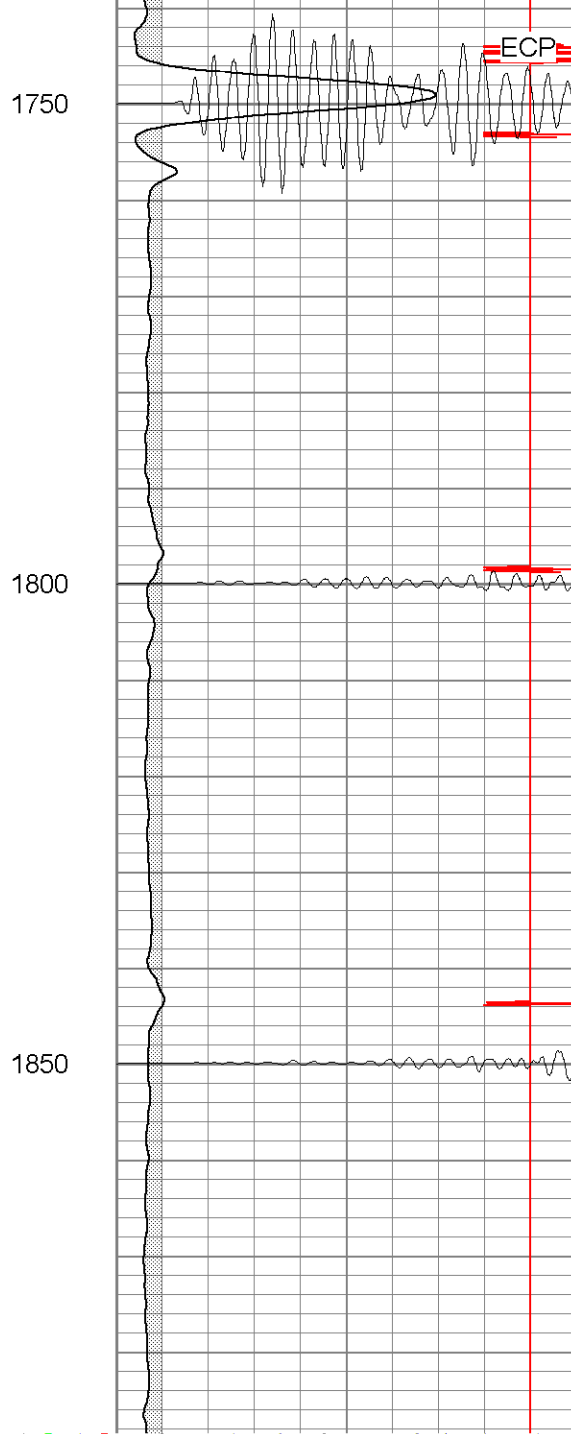
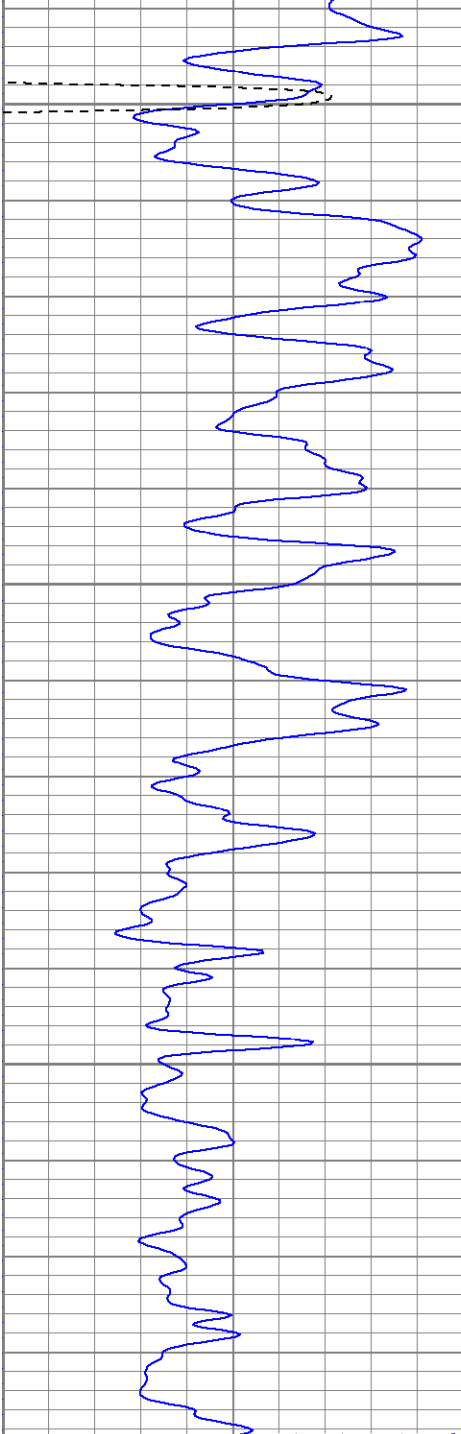


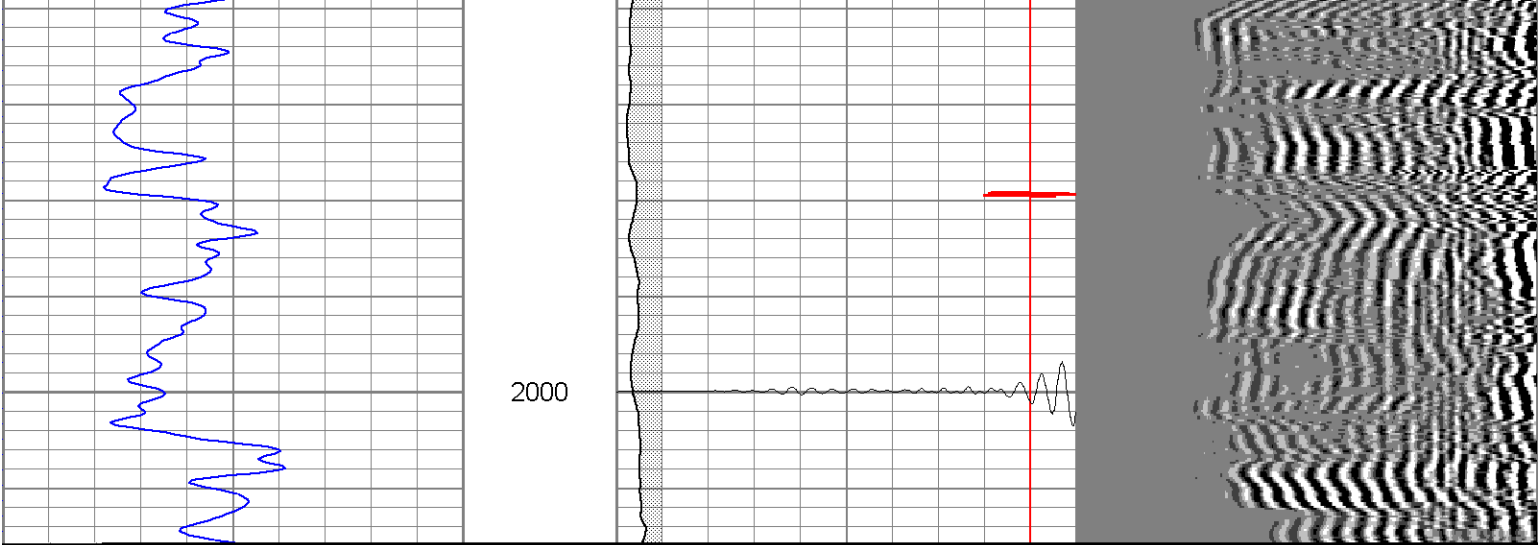


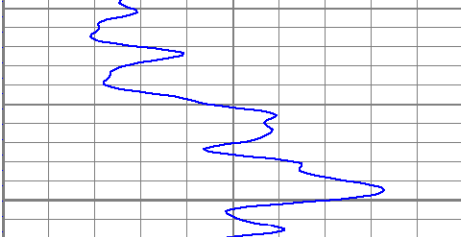
1300



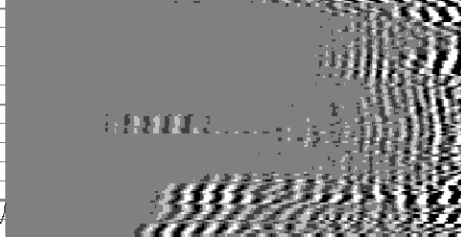
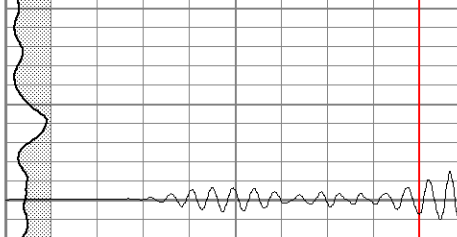


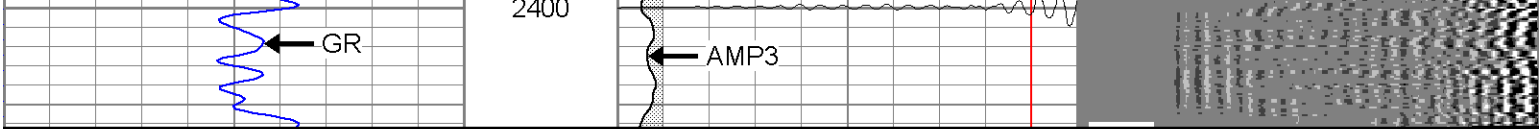


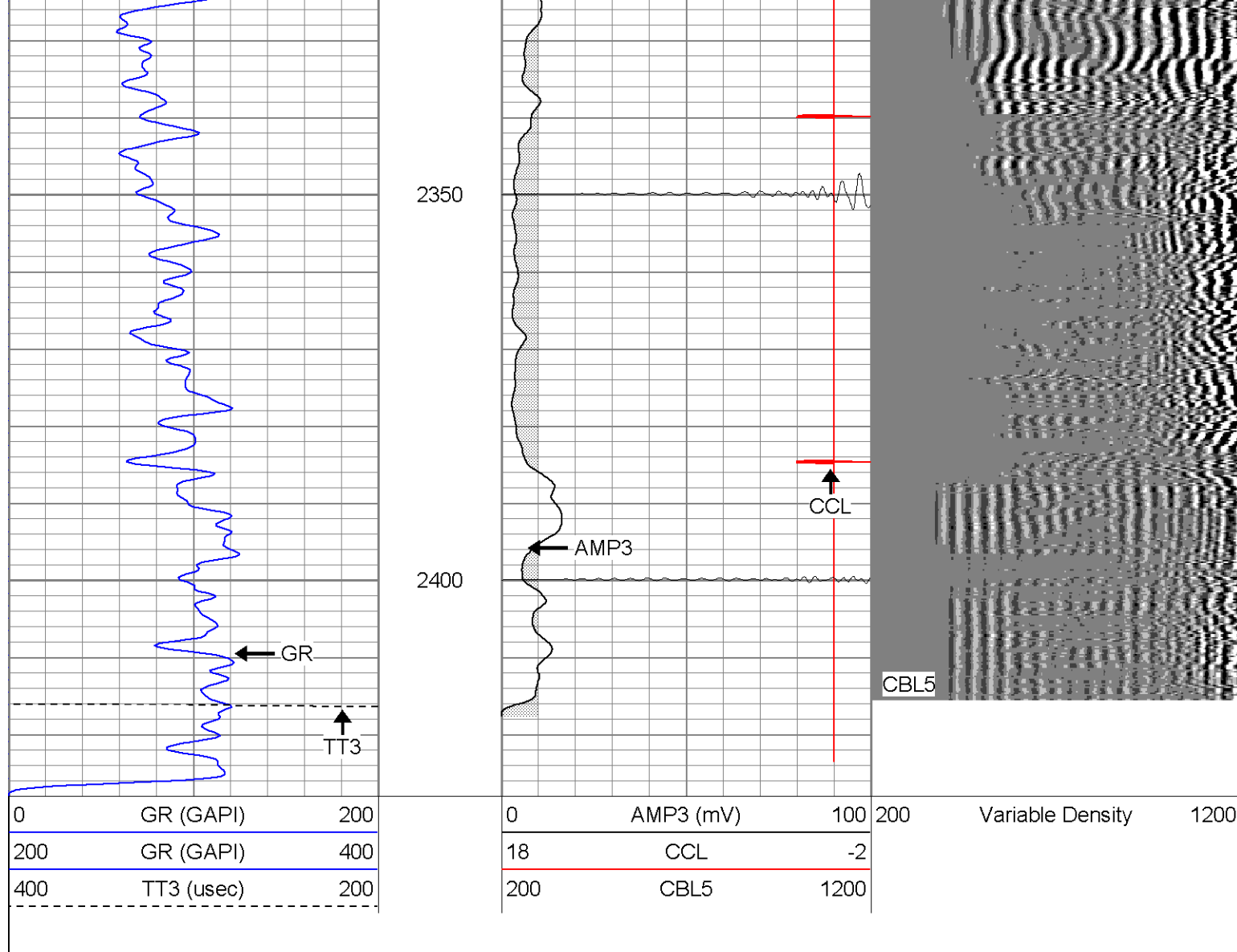




2200







Calibration Report

Database File: ac120481406b.db
 Dataset Pathname: pass1
 Dataset Creation: Mon Aug 14 13:10:31 2006 by Log Open-Cased 060407

Gamma Ray Calibration Report

Serial Number: Titan2.75
 Tool Model: 2.75
 Performed: Tue Aug 08 13:35:30 2006

Calibrator Value: 200.0 GAPI

Background Reading: 40.0 cps
 Calibrator Reading: 240.0 cps

Sensitivity: 1.1000 GAPI/cps

Cement Bond Log Calibration Report

Serial Number: Titan4
 Tool Model: 4
 Performed: Tue Aug 08 09:24:01 2006

Depth: 1054.62 ft
 Casing Diameter: 5.5 in

3' Spacing

5' Spacing

Signal Zero:

0

1

mV