

BLANCO

Geological Services LLC

Scale 1:240 (5"=100') Imperial

Well Name: Draco 31-21
Location: NW/NE Sec 21 T33S R65W
Licence Number: 05-071-08672-00
Spud Date: 01/30/06
Surface Coordinates: 491 FNL 2446 FEL

Las Animas County
Region: Purgatoire River
Drilling Completed: 01/31/06

Bottom Hole Coordinates:

Ground Elevation (ft): 6788' K.B. Elevation (ft): 6792'
Logged Interval (ft): 580' To: 1150' Total Depth (ft): 1150'
Formation: Raton / Vermejo / Trinidad
Type of Drilling Fluid: Air / Mist

Printed by STRIP.LOG from WellSight Systems 1-800-447-1534 www.WellSight.com

OPERATOR

Company: Pioneer Natural Resources USA, Inc.
Address: 1401 17th Street Suite 1200
Denver CO 80202

GEOLOGIST

Name: Roy Ismay / JoaQuin Gonzolas
Company: BLANCO Geological Services LLC
Address: PO Box 865
Trinidad CO 81082
(719) 846-3364

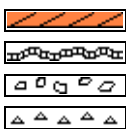
Rig

PWS #33

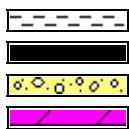
Comments

8 5/8" #24 Surface Casing set to 566.04'

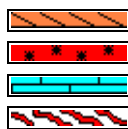
ROCK TYPES



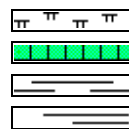
Anhy
Bent
Brec
Cht



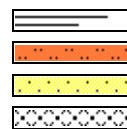
Clyst
Coal
Congl
Dol



Gyp
Igne
Lmst
Meta



Mrlst
Salt
Shale
Shcol



Shgy
Sltst
Ss
Till

ACCESSORIES

MINERAL

Anhy
 Arggrn
 Arg
 Bent
 Bit
 Breclfrag
 Calc
 Carb
 Chtdk
 Chtlt
 Dol
 Feldspar
 Ferrpel
 Ferr
 Glau

Gyp
 Hvymin
 Kaol
 Marl
 Minxl
 Nodule
 Phos
 Pyr
 Salt
 Sandy
 Silt
 Sil
 Sulphur
 Tuff

FOSSIL

Algae
 Amph
 Belm
 Bioclst
 Brach
 Bryozoa
 Cephal
 Coral
 Crin
 Echin
 Fish
 Foram
 Fossil
 Gastro
 Oolite

Ostra
 Pelec
 Pellet
 Pisolite
 Plant
 Strom

STRINGER

Anhy
 Arg
 Bent
 Coal
 Dol
 Gyp
 Ls
 Mrst

Sltstrg
 Ssstrg

TEXTURE

Boundst
 Chalky
 Cryxln
 Earthy
 Finexln
 Grainst
 Lithogr
 Microxln
 Mudst
 Packst
 Wackest

OTHER SYMBOLS

POROSITY TYPE

Earthy
 Fenest
 Fracture
 Inter
 Moldic
 Organic
 Pinpoint

Vuggy

SORTING

Well
 Moderate
 Poor

ROUNDING

Rounded
 Subrnd
 Subang
 Angular

OIL SHOWS

Even

Spotted
 Ques
 Dead

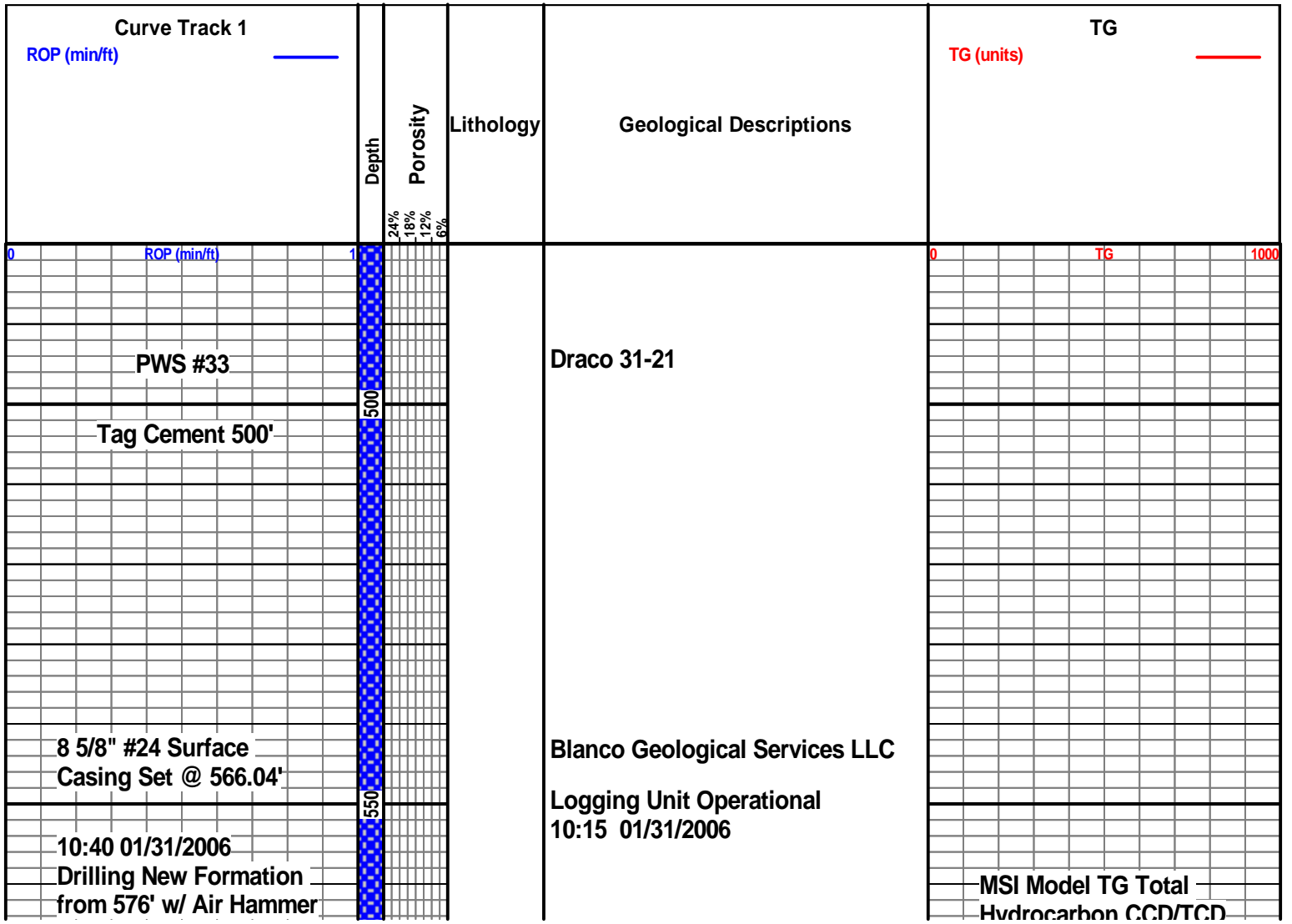
INTERVALS

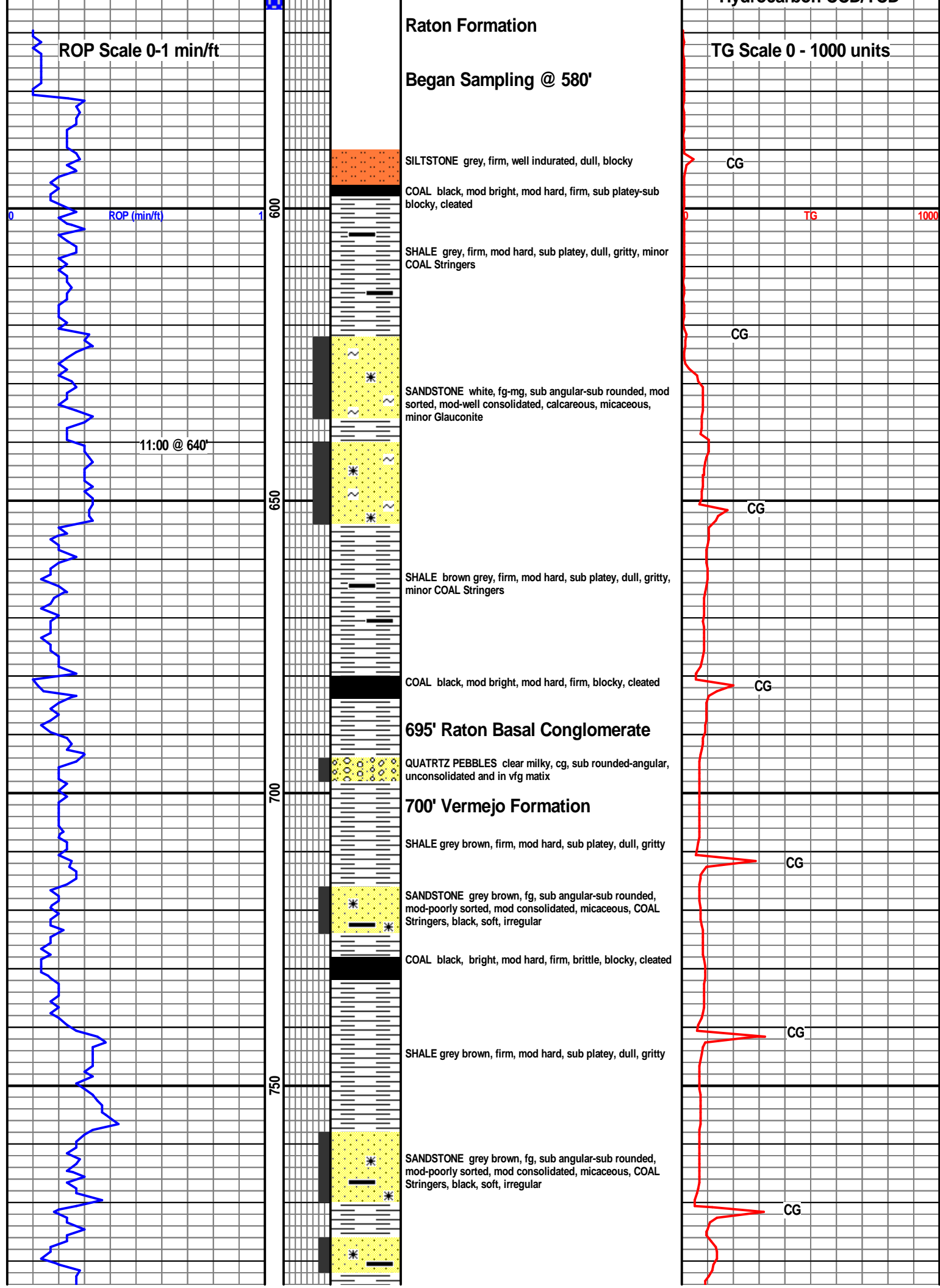
Core
 Dst
 Srfcsg

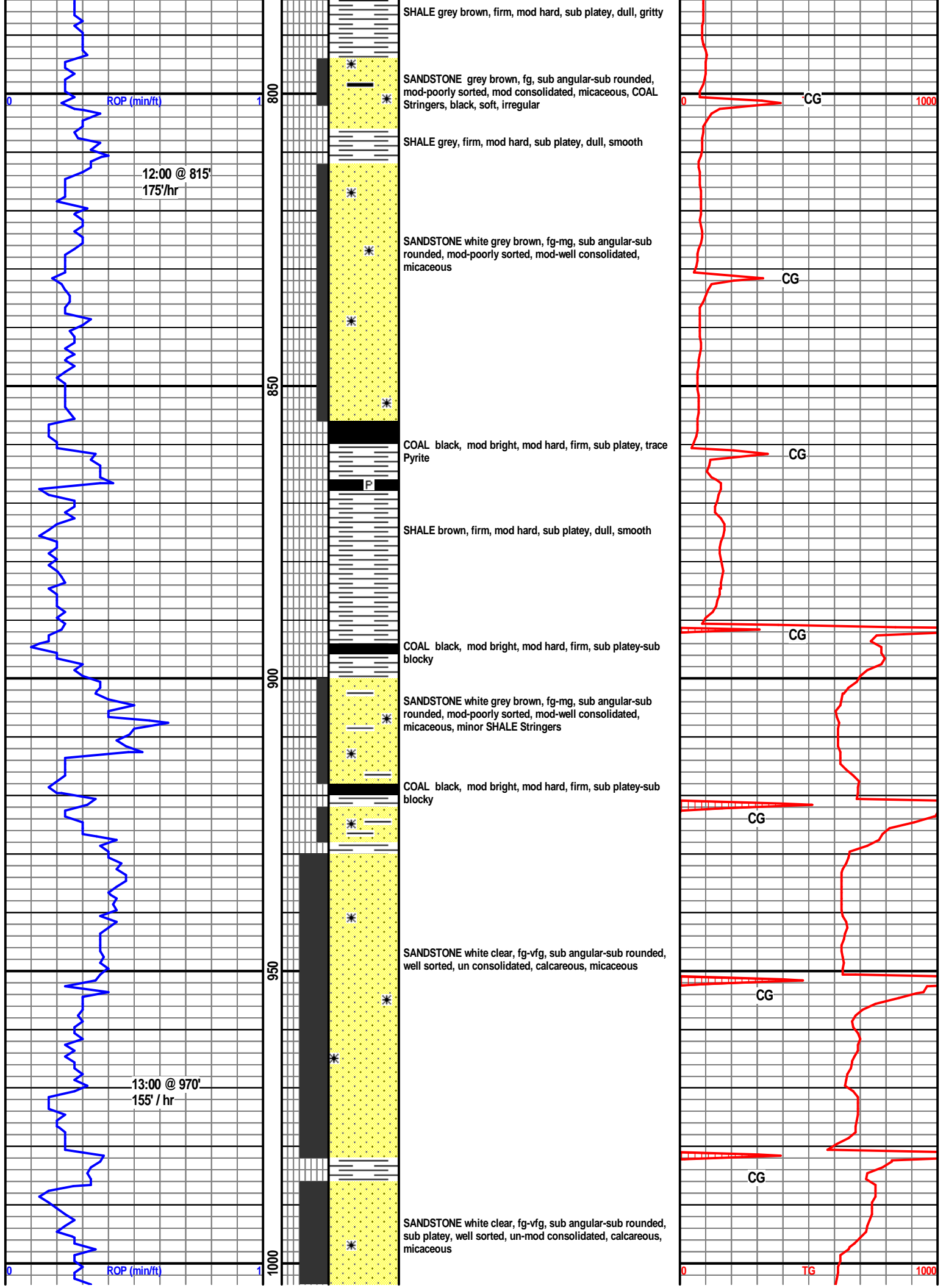
Cv-v
 Cv-c

EVENTS

Rft
 Sidewall
 Srfcsg







Abundant Water

1020' Trinidad Sandstone

SANDSTONE white clear, fg-vfg, sub angular-sub rounded, well sorted, un consolidated, calcareous, micaceous, minor Glauconite

SANDSTONE white grey clear, fg-vfg, sub angular-sub rounded, well sorted, un-mod consolidated, calcareous, micaceous, minor Glauconite, SHALE grey firm, platy, smooth

14:00 @ 1085'
115' / hr

01/31/06 14:40
1150' TD

Draco 31-21

CG 4277 units

CG 3824 units

CG

CG

CG