

Patterson

**DUAL INDUCTION
LOG**

Company XTO Energy, Inc.
Well Hill Ranch 35-15
Field Purgatorie River
County Las Animas State Colorado

Location: API # : 05-071-08794-00

778' FSL & 2586' FEL

SEC 35 TWP 34S RGE 67W

Permanent Datum
Log Measured From
Drilling Measured From

Ground Level
Ground Level
Ground Level

Elevation
7960'

Other Services
CDL
Neutron

Date 9-10-06

Run Number One

Depth Driller 2545'

Depth Logger 2534'

Bottom Logged Interval 2532'

Top Log Interval Surface Casing

Casing Driller 8 5/8" @ 410'

Casing Logger 410'

Bit Size 7 7/8"

Type Fluid in Hole Water

Density / Viscosity

pH / Fluid Loss

Source of Sample

Rm @ Meas. Temp

Rmf @ Meas. Temp

Rmc @ Meas. Temp

Source of Rmf / Rmc

Rm @ BHT

Time Circulation Stopped

Time Logger on Bottom

Maximum Recorded Temperature

Equipment Number

Location

Recorded By

Witnessed By

Comments

Well Directions:

Lorencito Canyon-Drive to XTO Hill-Drive to Top of Hill-Stay on Main Road-
Drive Past Location on Left-1st Location on Right.

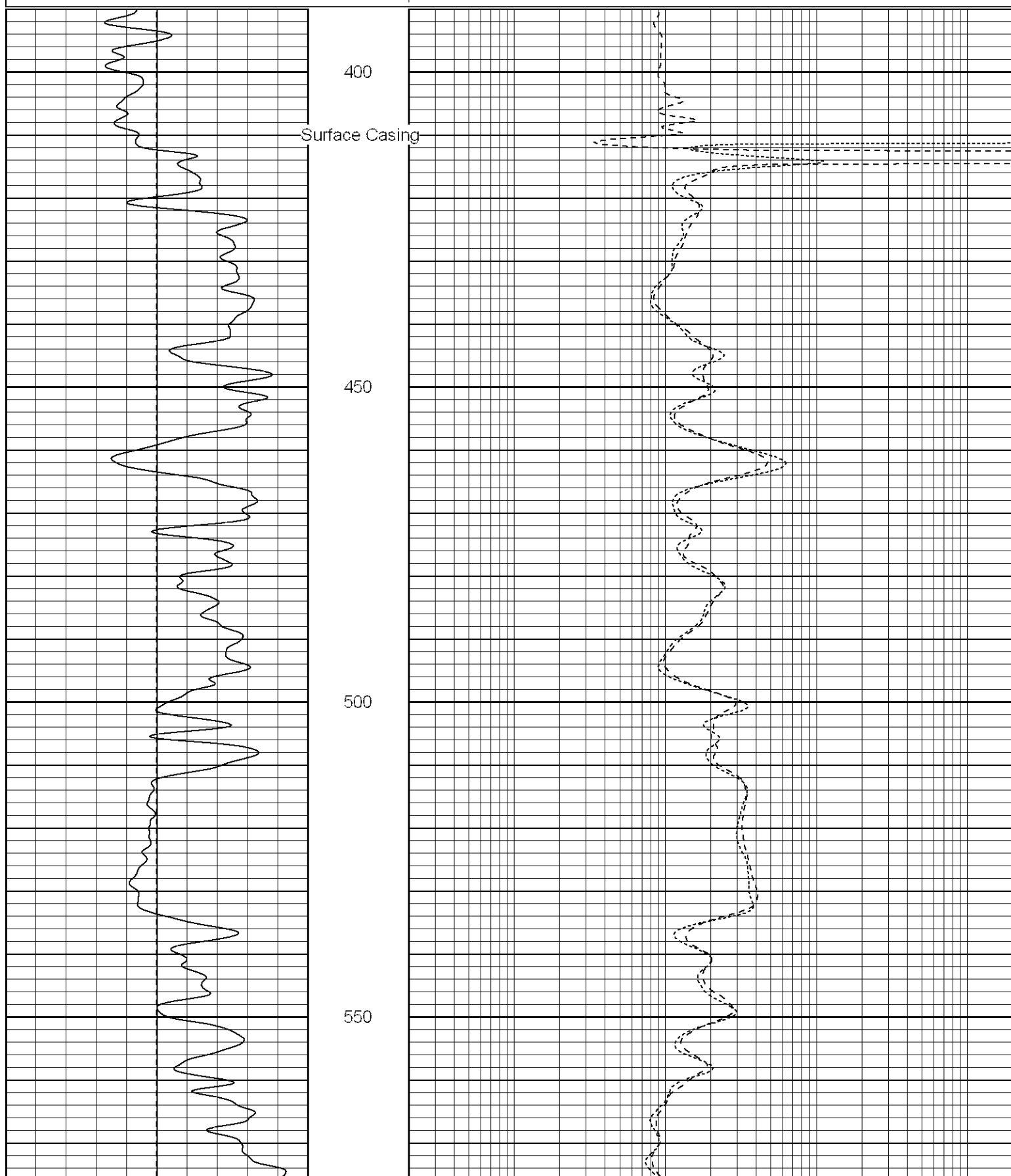
Patterson

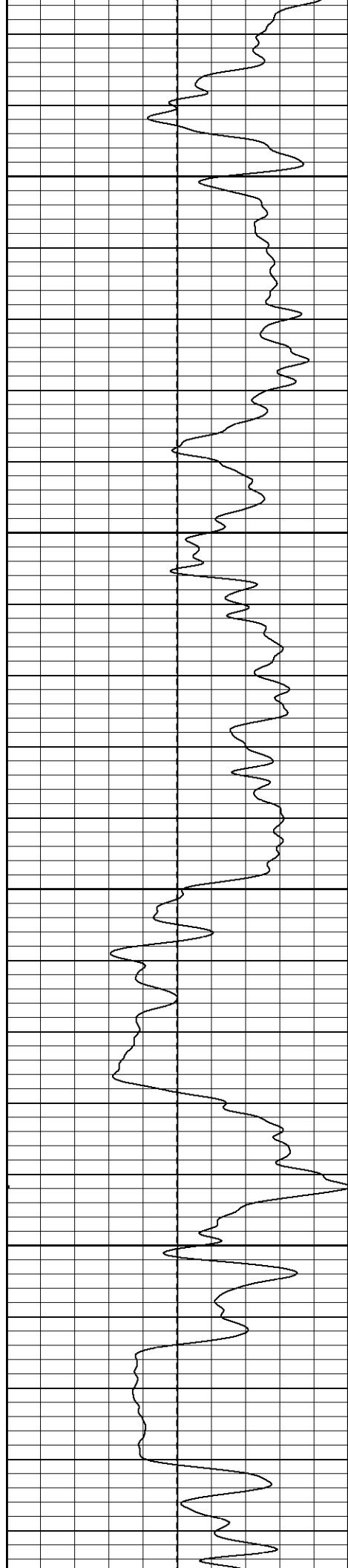
Main Pass

Database File: hr3515.db
Dataset Pathname: pass3.4
Presentation Format: dil
Dataset Creation: Mon Sep 11 07:33:49 2006 by Calc Warrior 7.0 STD Ope
Charted by: Depth in Feet scaled 1:240

0	GR (GAPI)	200
-100	SP (mV)	100

0.2	RILD (Ohm-m)	2000
0.2	RILM (Ohm-m)	2000
0.2	RLL3 (Ohm-m)	2000



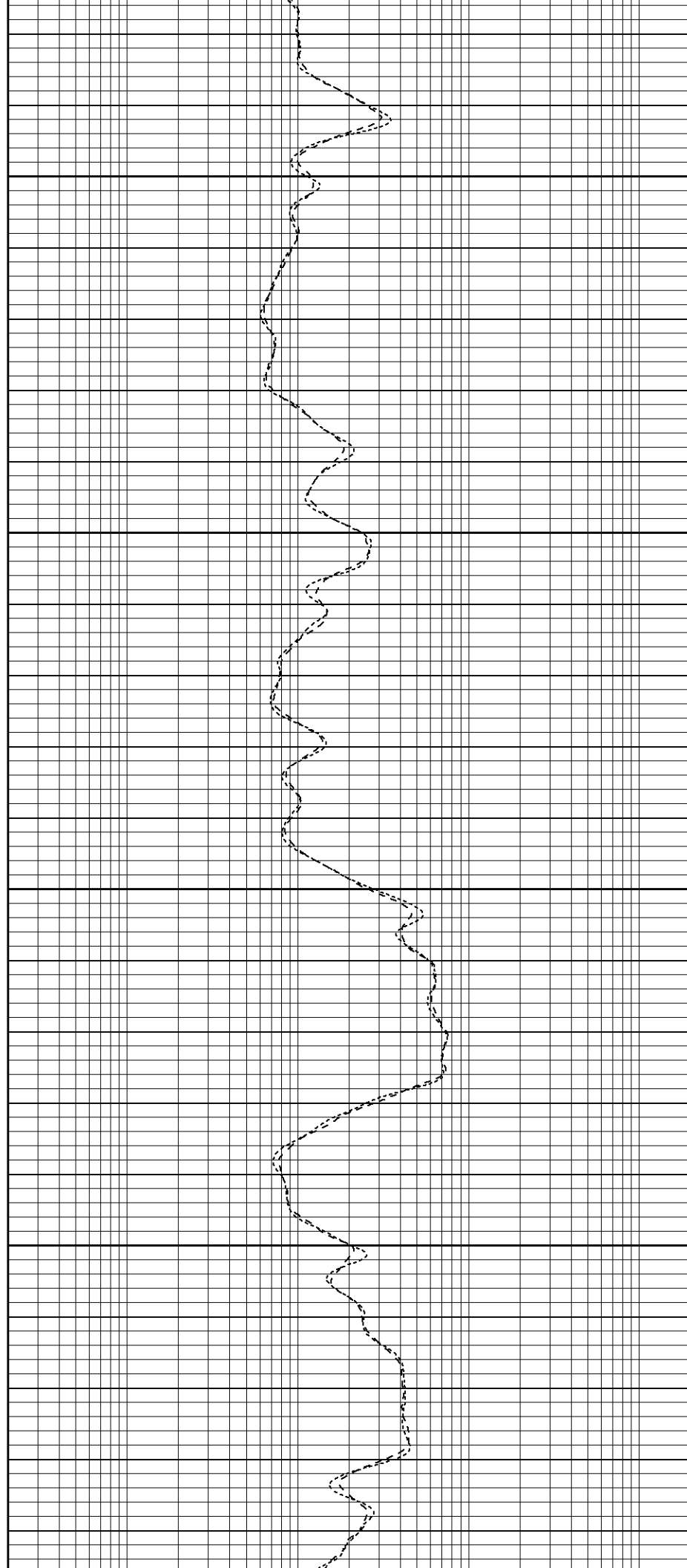


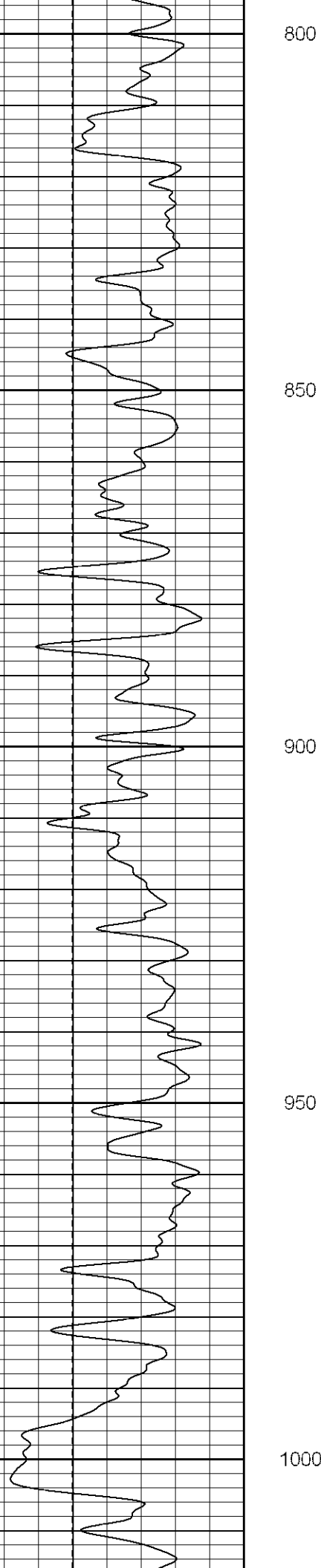
600

650

700

750





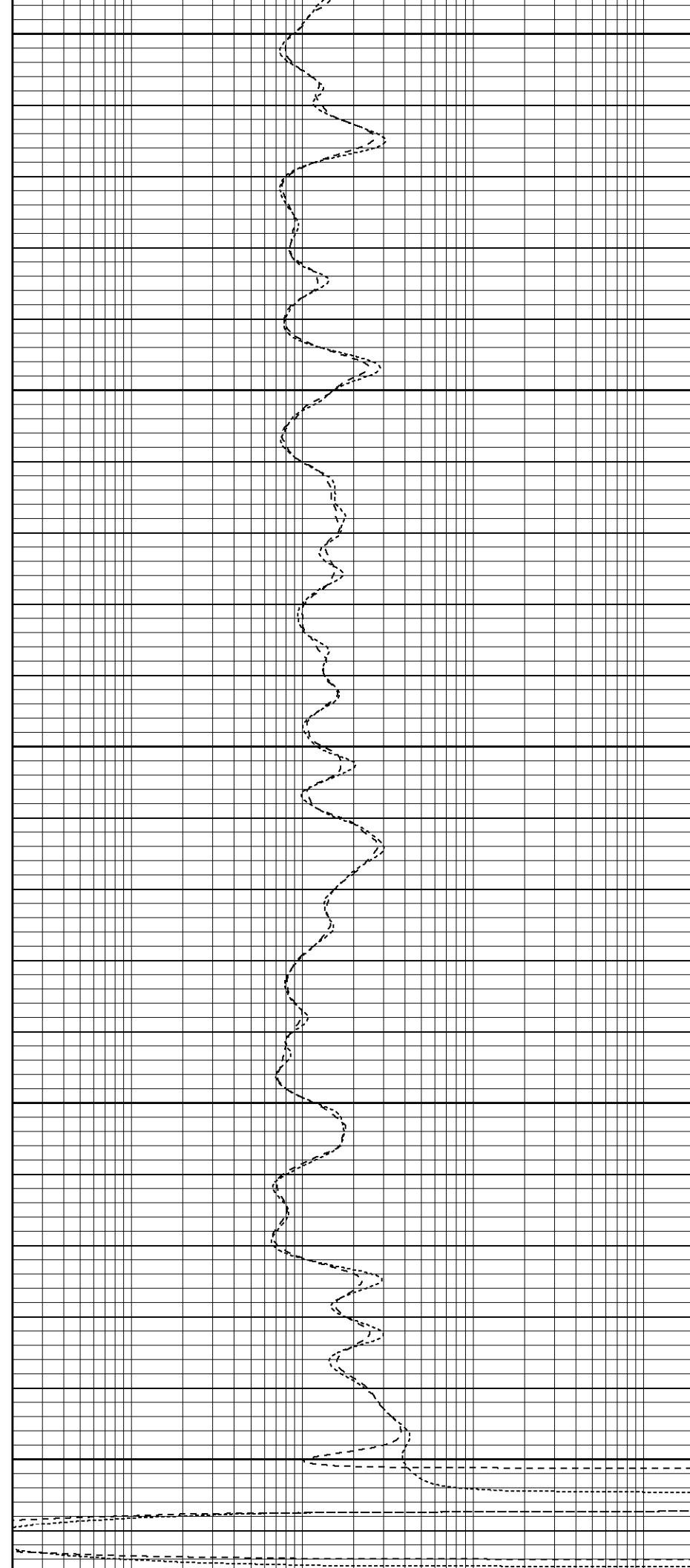
800

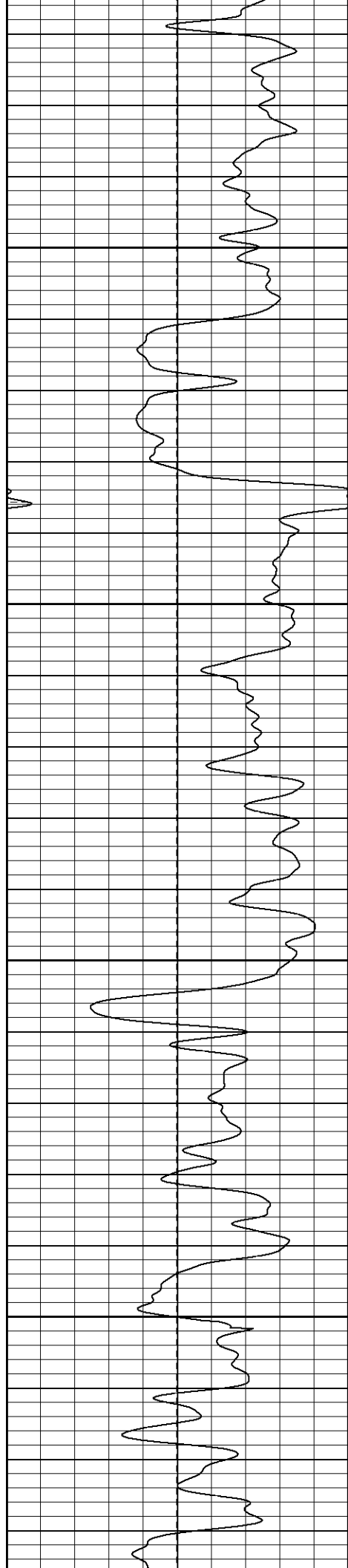
850

900

950

1000



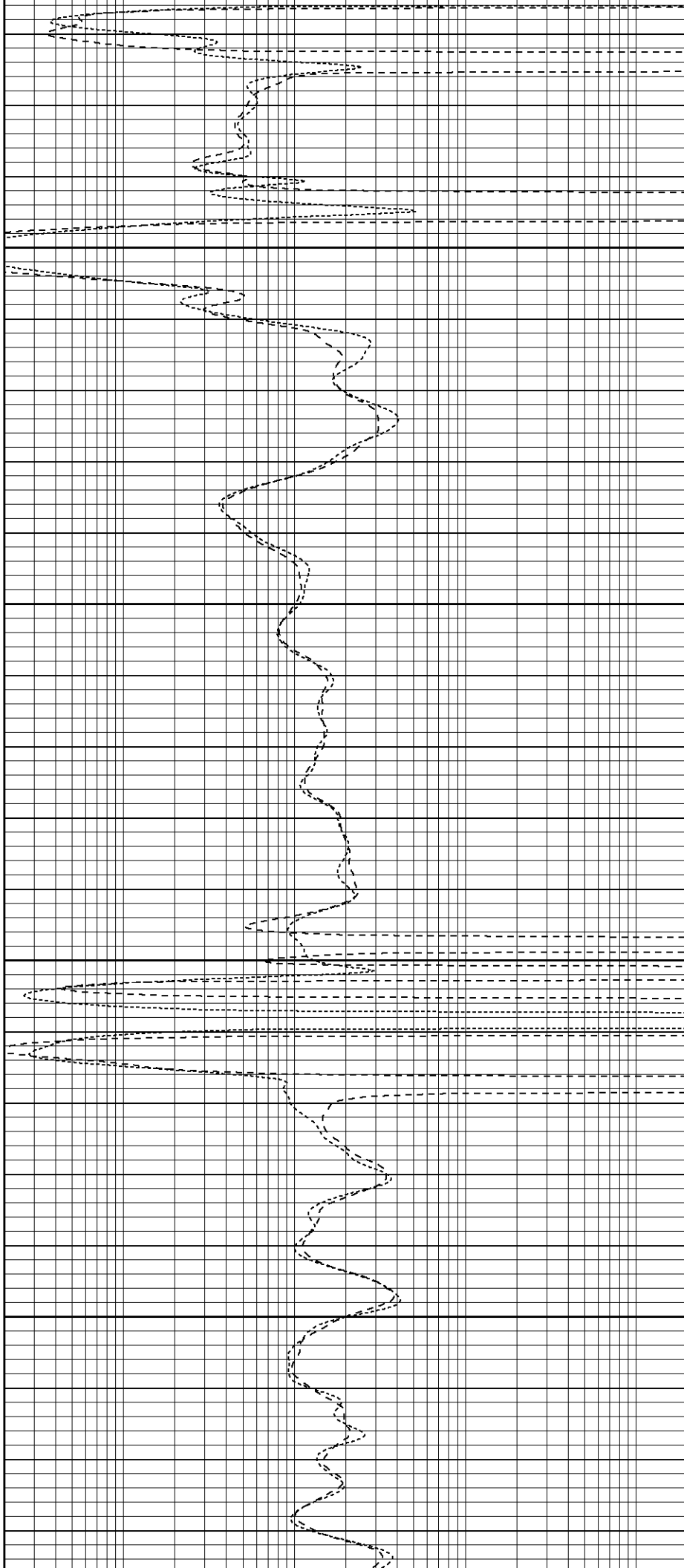


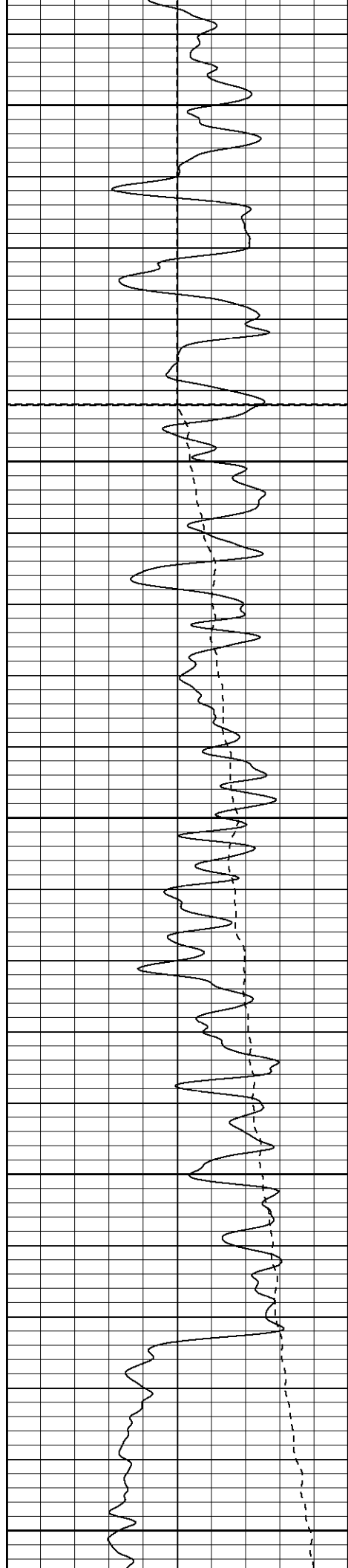
1050

1100

1150

1200





1250

Fluid Level

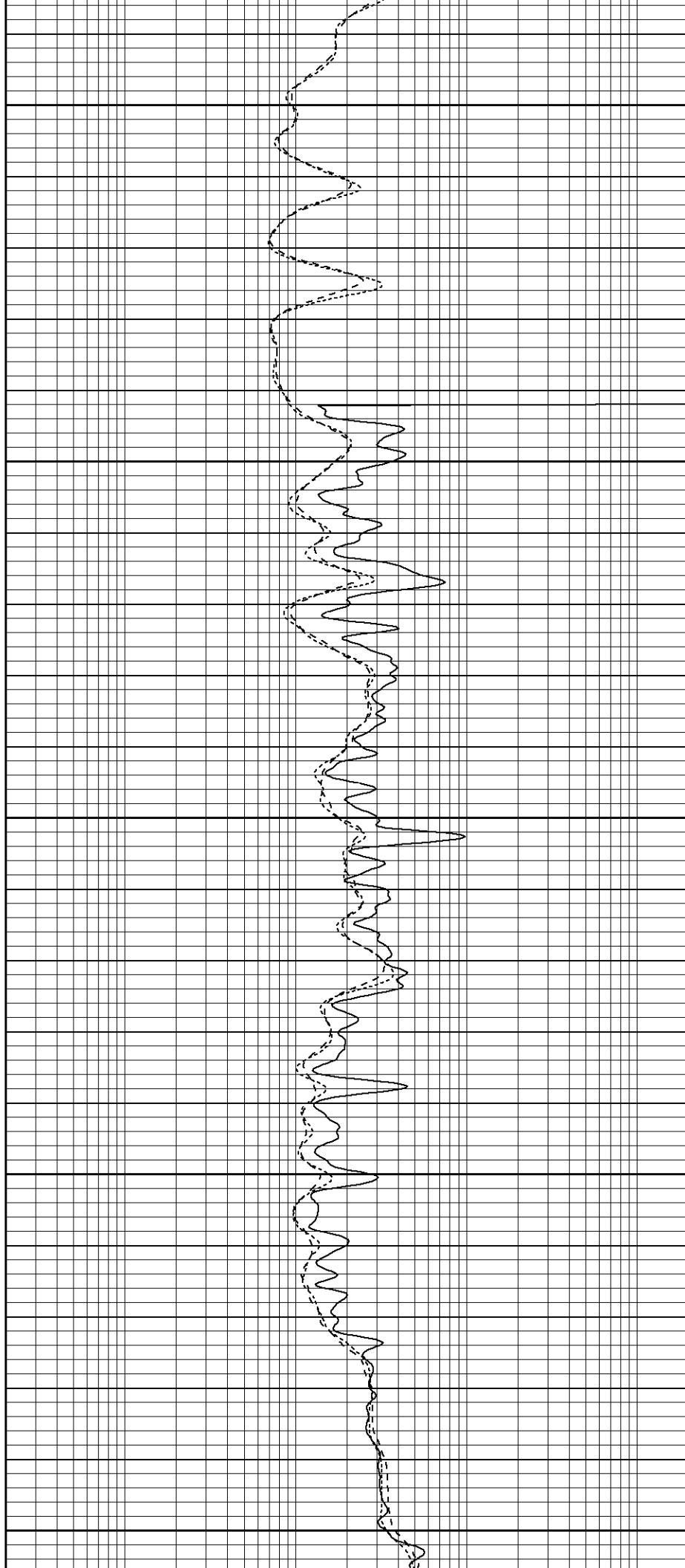
1300

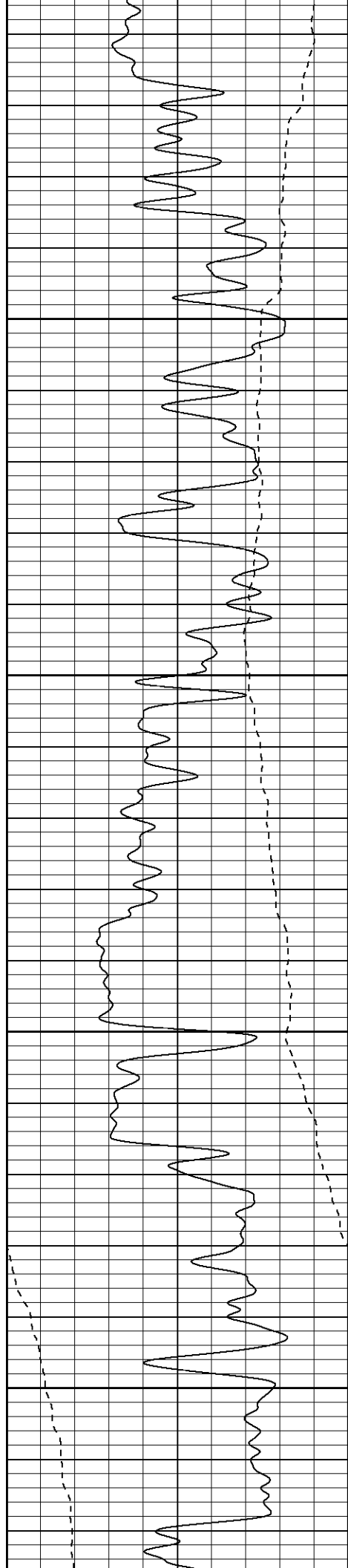
1350

1400

Foam

1450



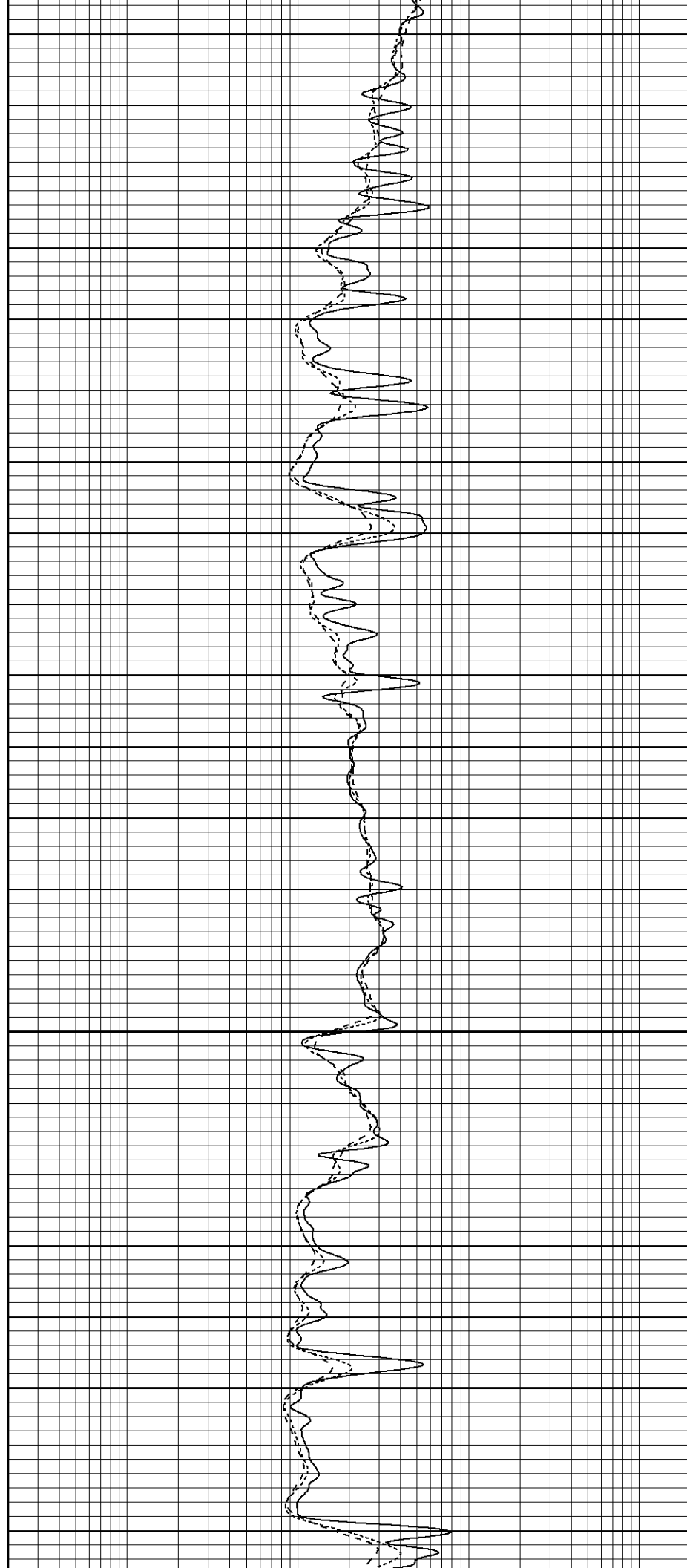


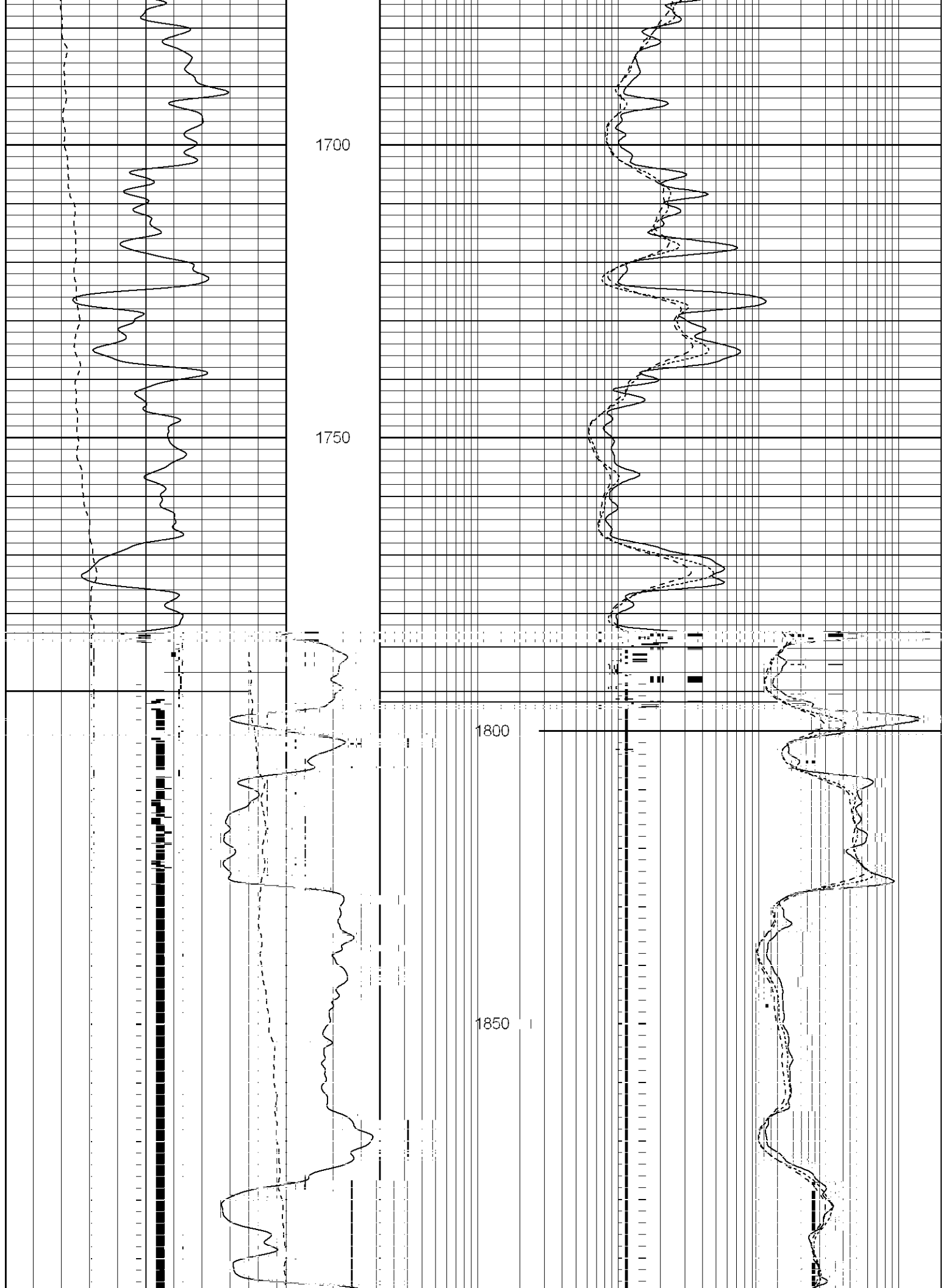
1500

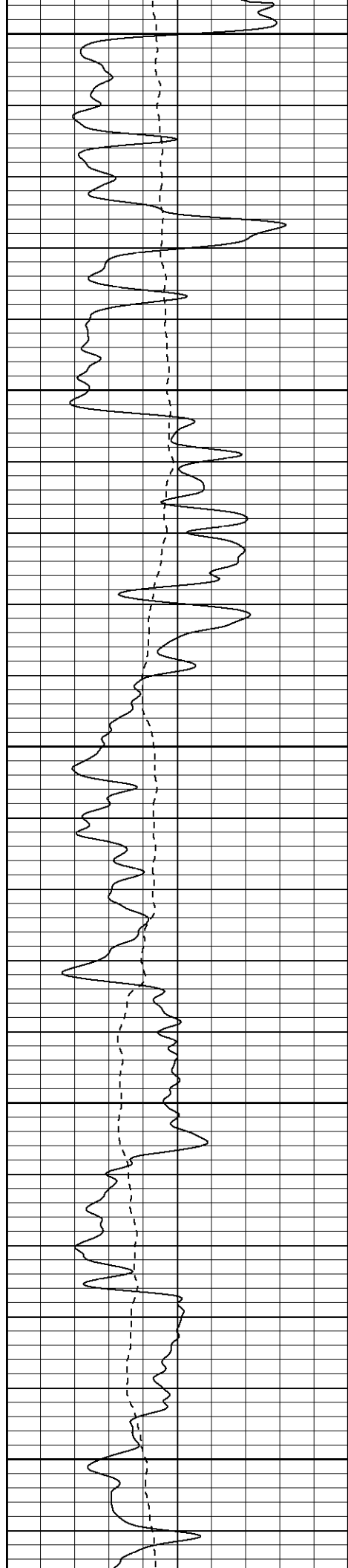
1550

1600

1650







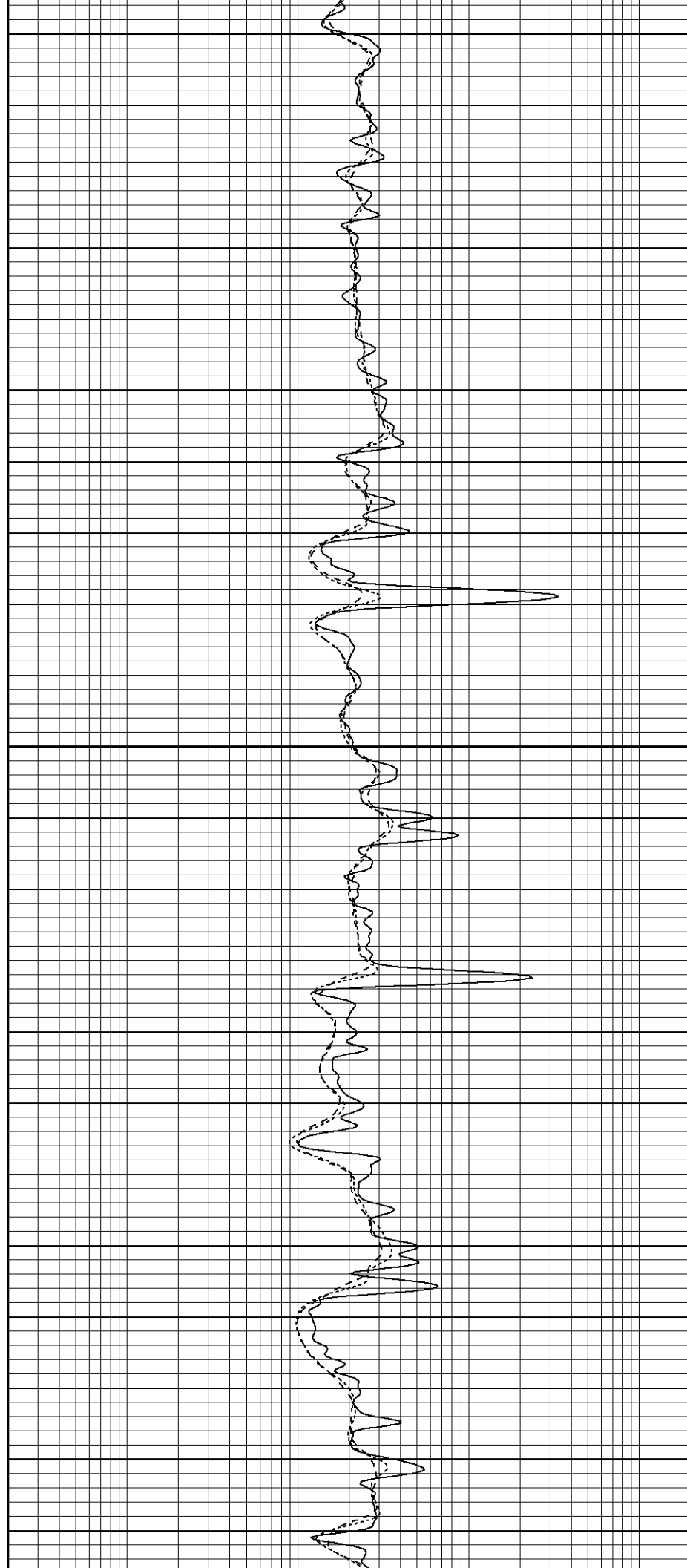
1900

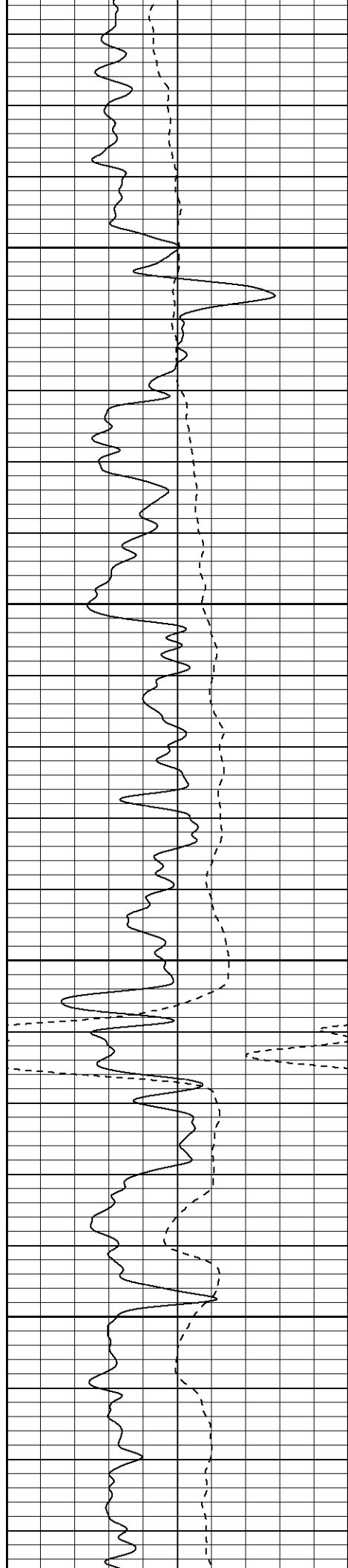
1950

2000

2050

2100



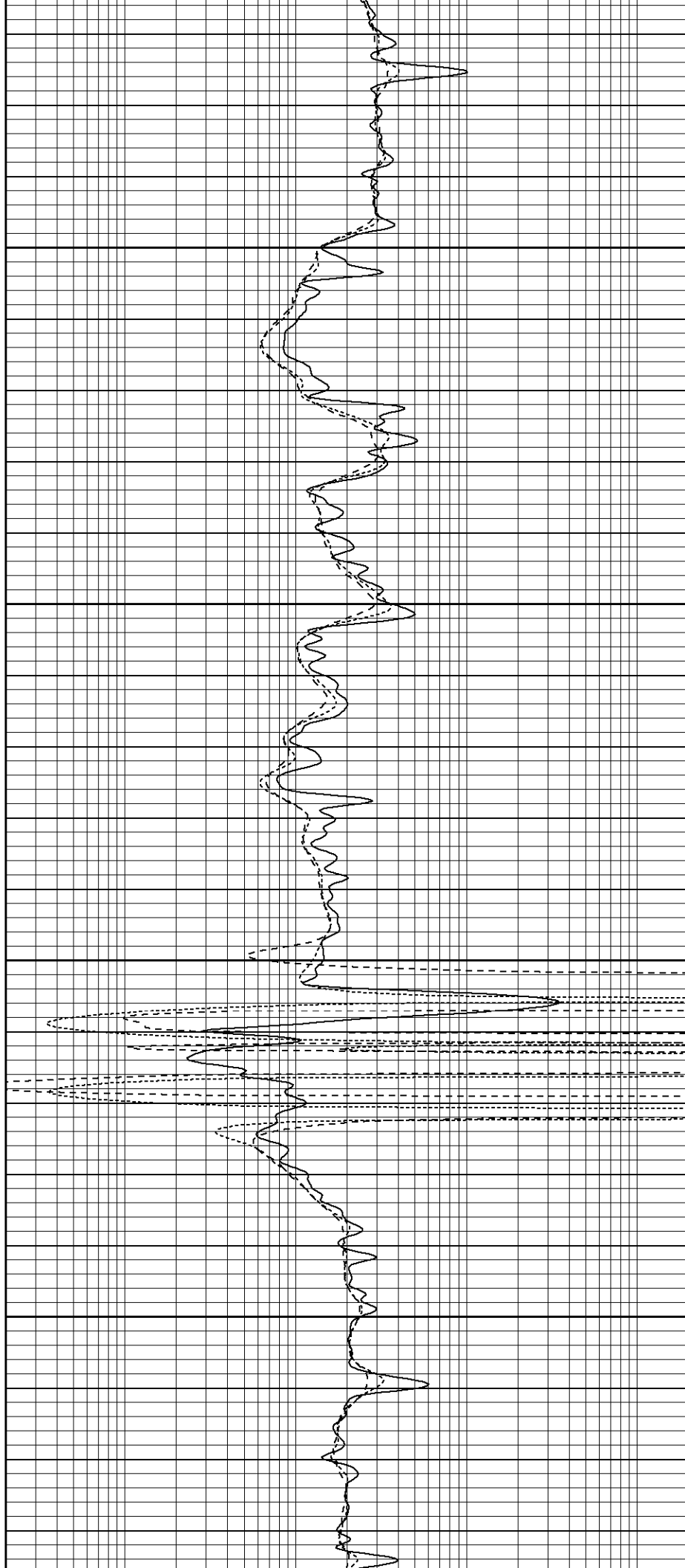


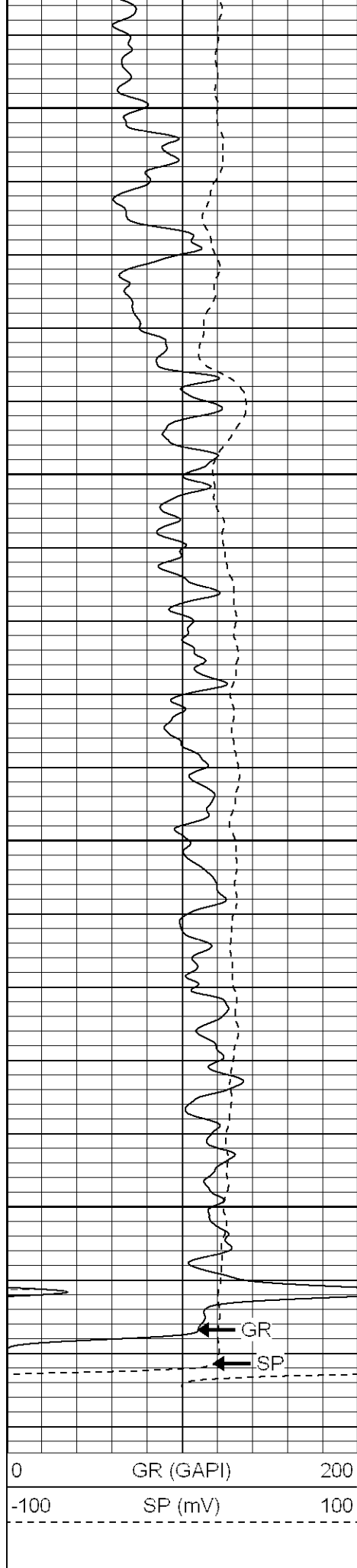
2150

2200

2250

2300





2350

2400

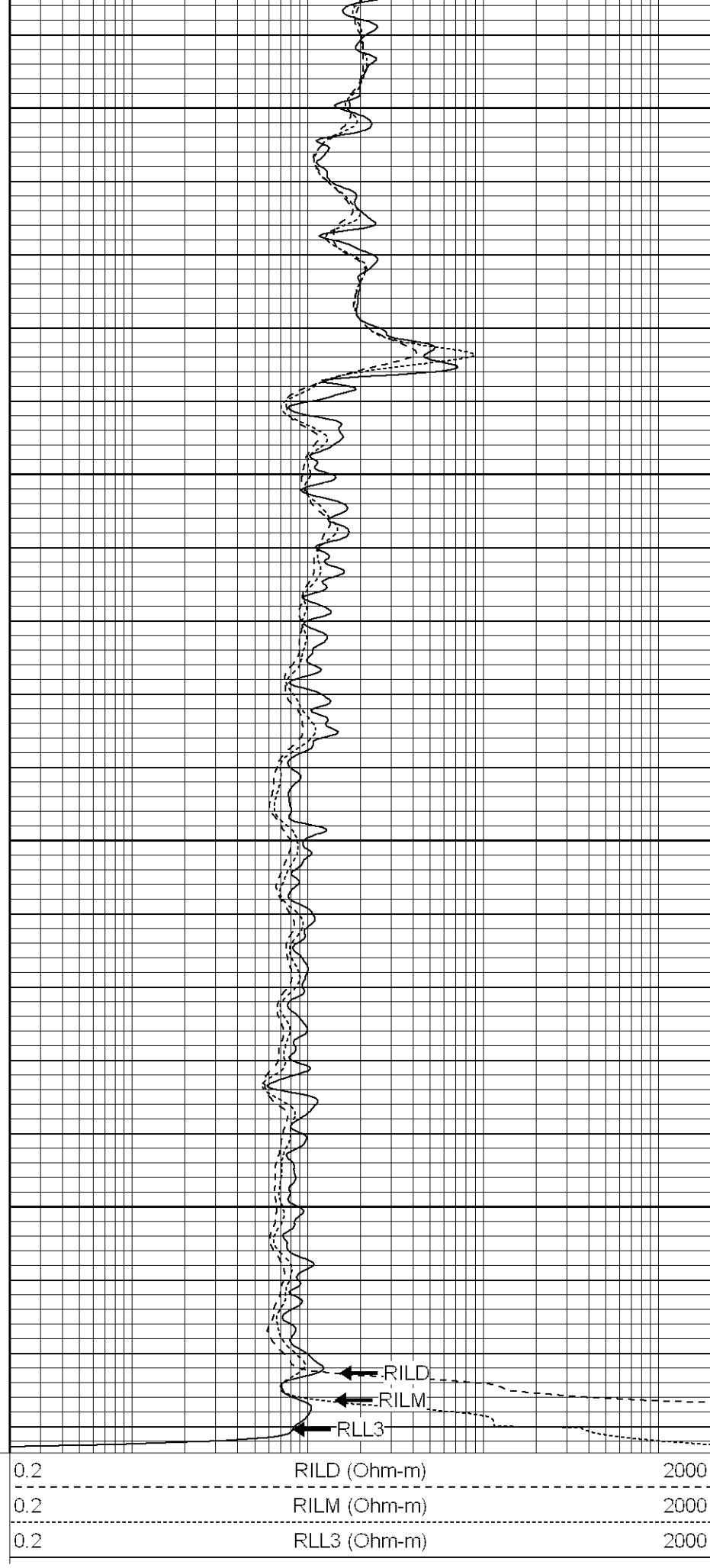
2450

2500

GR

SP

0	GR (GAPI)	200
-100	SP (mV)	100



RILD

RILM

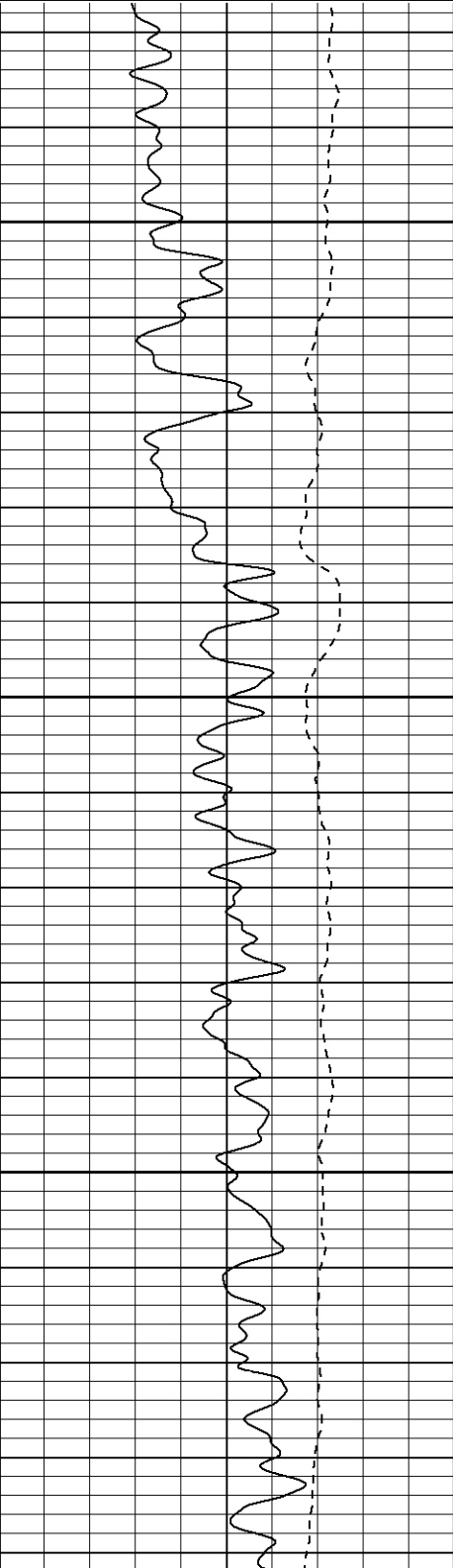
RLL3

0.2	RILD (Ohm-m)	2000
0.2	RILM (Ohm-m)	2000
0.2	RLL3 (Ohm-m)	2000

Database File: hr3515.db
Dataset Pathname: pass1.3
Presentation Format: dil
Dataset Creation: Mon Sep 11 07:45:07 2006 by Calc Warrior 7.0 STD Ope
Charted by: Depth in Feet scaled 1:240

0	GR (GAPI)	200
-100	SP (mV)	100

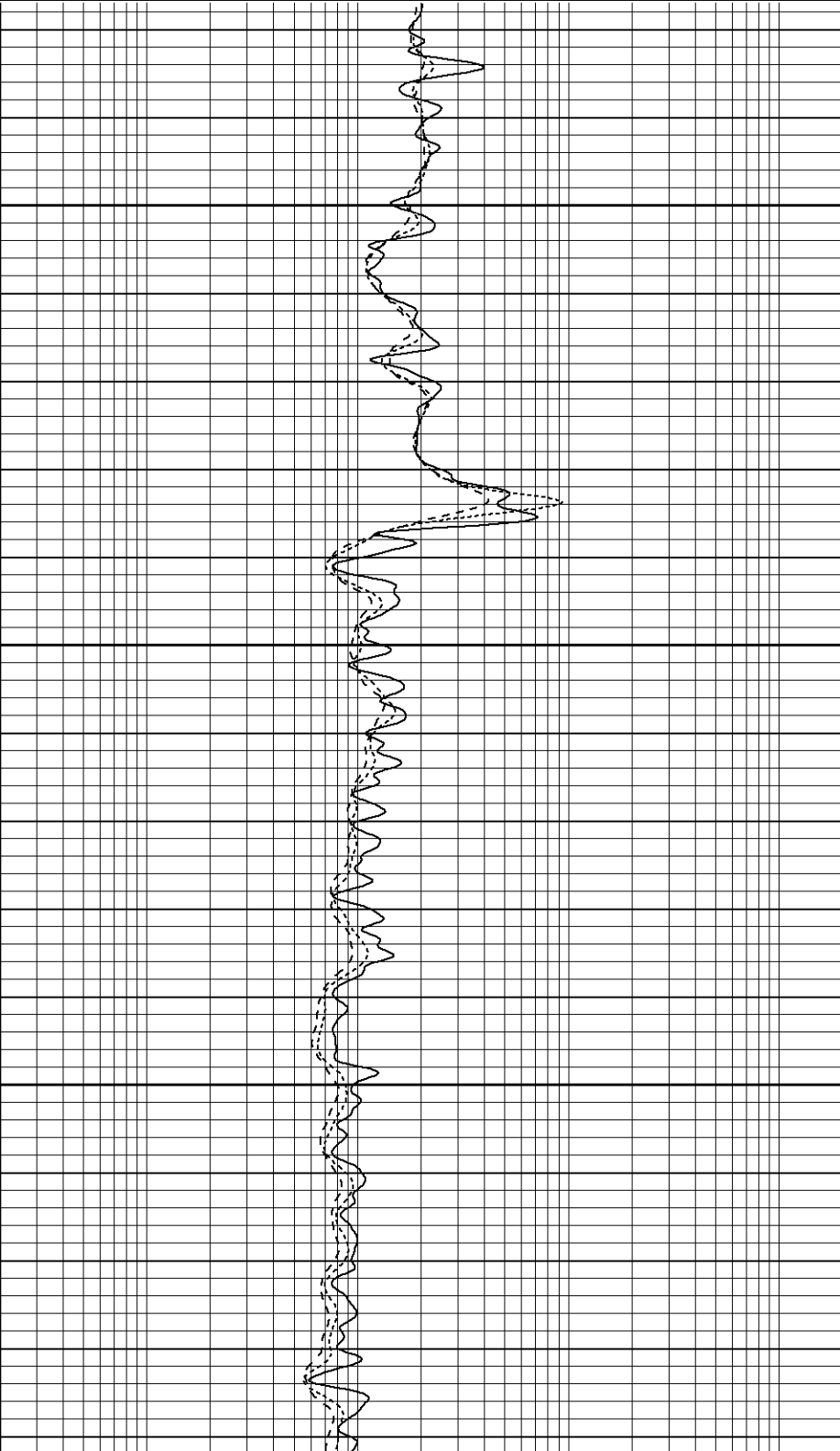
0.2	RILD (Ohm-m)	2000
0.2	RILM (Ohm-m)	2000
0.2	RLL3 (Ohm-m)	2000

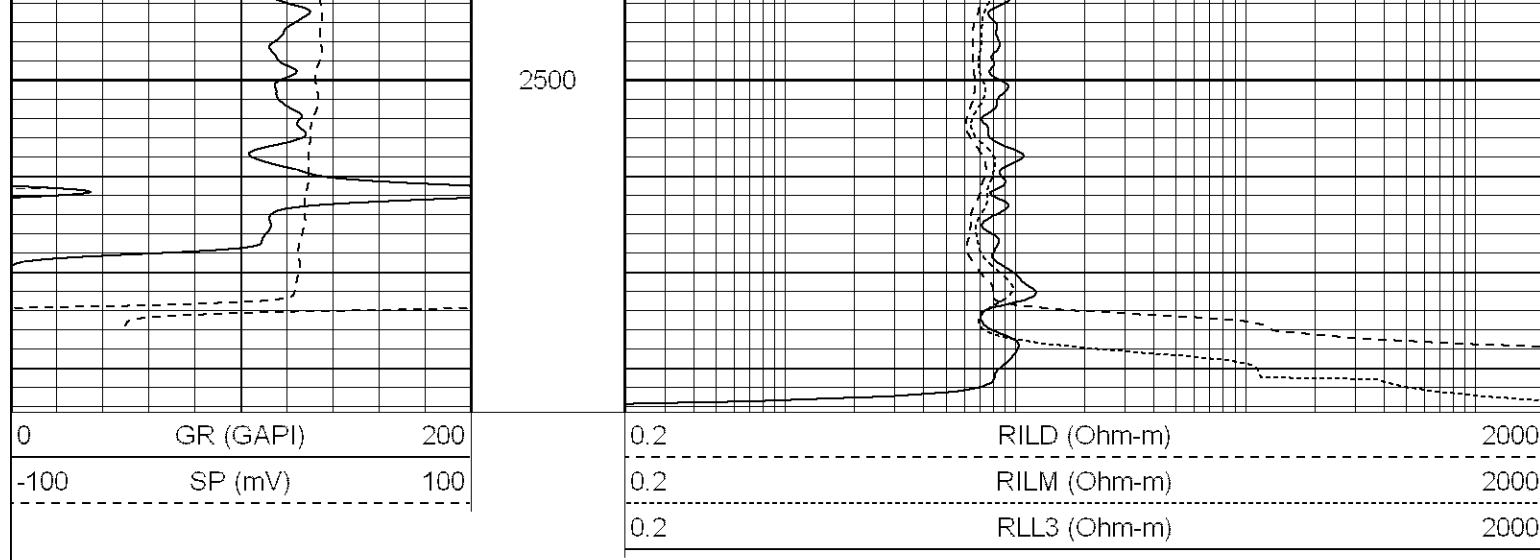


2350

2400

2450





Dual Induction Calibration Report

Serial-Model: 5375-G
 Surface Cal Performed: Sat Sep 09 09:41:22 2006
 Downhole Cal Performed: Sat Sep 09 09:41:34 2006

Surface Calibration

Readings				References			Results	
Loop:	Air	Loop		Air	Loop		m	b
Deep	0.005	0.625	V	0.000	400.000	mmho-m	644.430	-2.978
Medium	0.007	0.749	V	0.000	450.000	mmho-m	607.230	-4.544
Internal:	Zero	Cal		Zero	Cal		m	b
Deep	0.005	0.626	V	0.000	500.000	mmho-m	805.403	-3.785
Medium	0.008	0.748	V	0.000	500.000	mmho-m	674.850	-5.062

Downhole Calibration

Readings				References			Results	
Internal:	Zero	Cal		Zero	Cal		m	b
Deep	-0.224	400.224	mmho-m	0.051	400.118	mmho-m	0.999	0.275
Medium	-0.274	450.178	mmho-m	0.011	449.911	mmho-m	0.999	0.285
Shallow	2.502	0.014	V	500.000	2.000	Ohm-m	165.000	0.000

Gamma Ray Calibration Report

Serial Number: 2007
 Tool Model: HurstIn7
 Performed: Fri Sep 08 11:13:01 2006
 Calibrator Value: 200.0 GAPI
 Background Reading: 54.0 cps
 Calibrator Reading: 218.0 cps
 Sensitivity: 0.7000 GAPI/cps

Sensor	Offset (ft)	Schematic	Description	Len (ft)	OD (in)	Wt (lb)

