



**SUPERIOR**  
Black Lick, Pa.  
Mercer, Pa.  
Wooster, Oh.  
Cleveland, Ok.  
Trinidad, Co.

## CEMENT BOND GAMMA RAY

Company XTO Energy Inc.  
Well Golden Eagle 29-07  
Field Purgatorie River  
County Las Animas  
State CO

Company XTO Energy Inc.  
Well Golden Eagle 29-07  
Field Purgatorie River  
County Las Animas  
State CO

Location: API #: 05 071 09361 00

1878' FNL & 2367' FEL

SEC 29 TWP 33S RGE 67W

Permanent Datum Ground Level Elevation 7185'  
Log Measured From Ground Level  
Drilling Measured From Ground Level

Other Services  
PRES  
CONTROL  
Elevation  
K.B. -----  
D.F. -----  
G.L. 7185'

|                        |             |             |        |
|------------------------|-------------|-------------|--------|
| Date                   | 1/28/08     |             |        |
| Run Number             | one         |             |        |
| Depth Driller          | 1910'       |             |        |
| Depth Logger           | 1900'       |             |        |
| Bottom Logged Interval | 1896'       |             |        |
| Top Log Interval       | Surf.       |             |        |
| Open Hole Size         | 7 7/8"      |             |        |
| Type Fluid             | water       |             |        |
| Density / Viscosity    | ///         |             |        |
| Max. Recorded Temp.    | 116F        |             |        |
| Estimated Cement Top   | Surf.       |             |        |
| Time Well Ready        | ROA         |             |        |
| Time Logger on Bottom  | 4:30        |             |        |
| Equipment Number       | 0703        |             |        |
| Location               | Trinidad    |             |        |
| Recorded By            | Worley      |             |        |
| Witnessed By           | Mr. Blatnik | Mr. Gourdin |        |
| Borehole Record        |             |             |        |
| Run Number             | Bit         | From        | To     |
|                        |             | Size        | Weight |
|                        |             |             | From   |
|                        |             |             | To     |
| Casing Record          | Size        | Wgt/Ft      | Top    |
| Surface String         | 8 5/8"      |             | 00     |
| Prot. String           |             |             |        |
| Production String      | 5 1/2"      |             | 00     |
| Liner                  |             |             | NA     |

<<< Fold Here >>>

All interpretations are opinions based on inferences from electrical or other measurements and we cannot and do not guarantee the accuracy or correctness of any interpretation, and we shall not, except in the case of gross or willful negligence on our part, be liable or responsible for any loss, costs, damages, or expenses incurred or sustained by anyone resulting from any interpretation made by any of our officers, agents or employees. These interpretations are also subject to our general terms and conditions set out in our current Price Schedule.

### Comments

Hwy 12, second entrance to Bosque, across tracks, first left to location.

CBL ran under 1000 PSI.



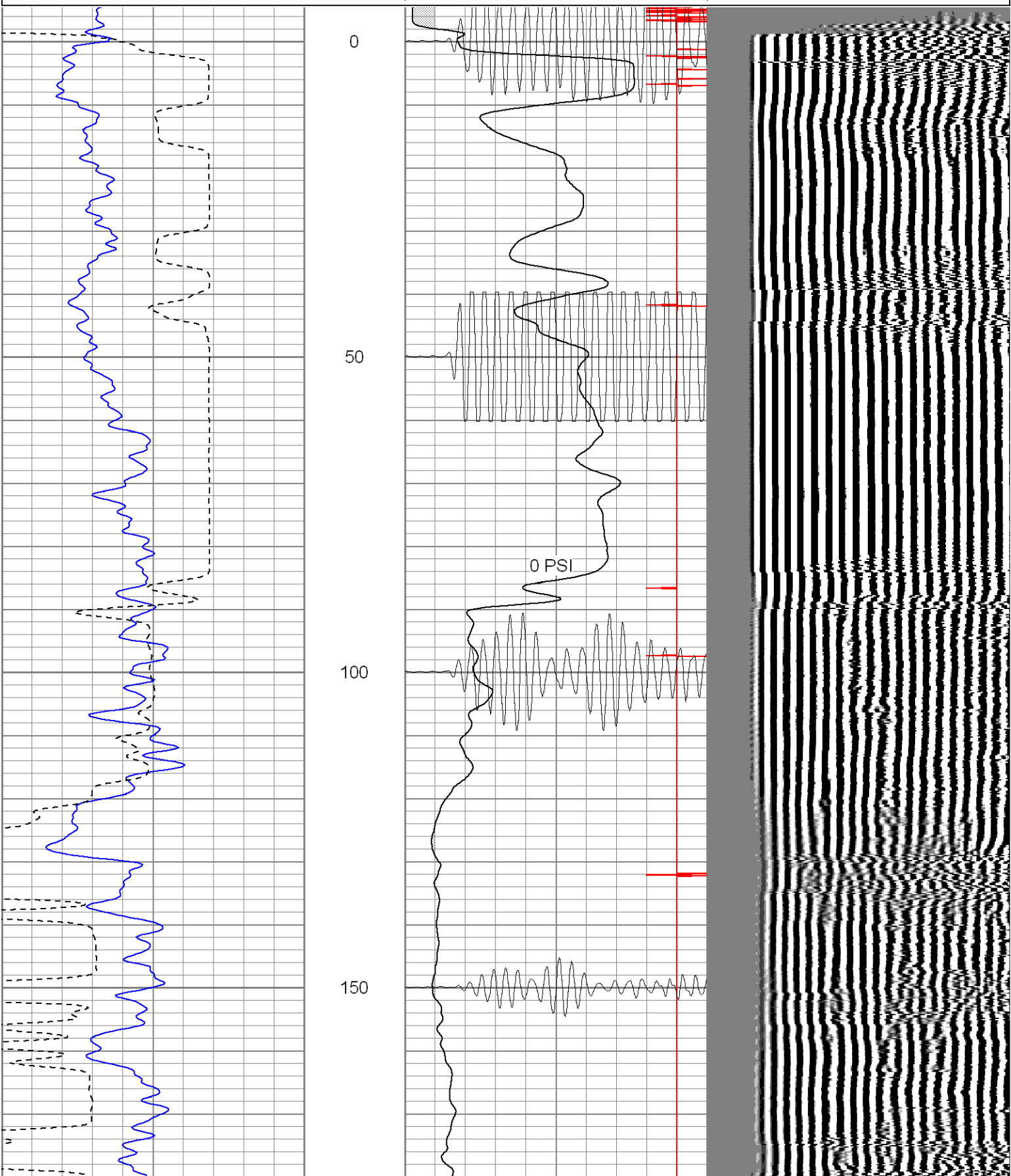
**SUPERIOR**

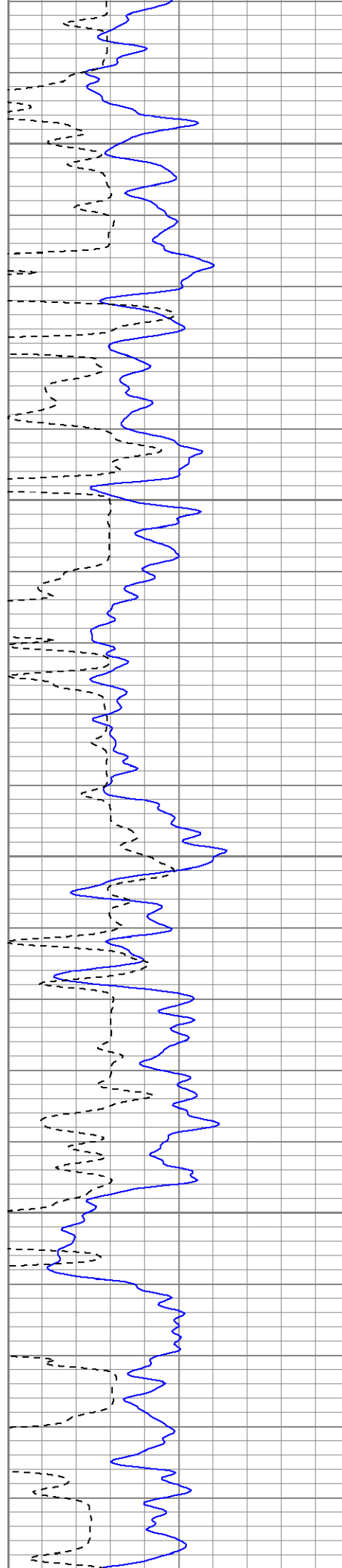
Black Lick, Pa.  
Mercer, Pa.  
Wooster, Oh.  
Cleveland, Ok.  
Trinidad, Co.

# Main Pass 1000 PSI

Database File: ge29-07b12807.db  
Dataset Pathname: pass5  
Presentation Format: cblrt  
Dataset Creation: Mon Jan 28 16:29:32 2008 by Log Open-Cased 071220  
Charted by: Depth in Feet scaled 1:240

|     |            |     |     |           |      |     |      |      |
|-----|------------|-----|-----|-----------|------|-----|------|------|
| 0   | GR (GAPI)  | 200 | 0   | AMP3 (mV) | 100  | 200 | CBL5 | 1200 |
| 400 | TT3 (usec) | 200 | 18  | CCL       | -2   |     |      |      |
|     |            |     | 200 | CBL5      | 1200 |     |      |      |





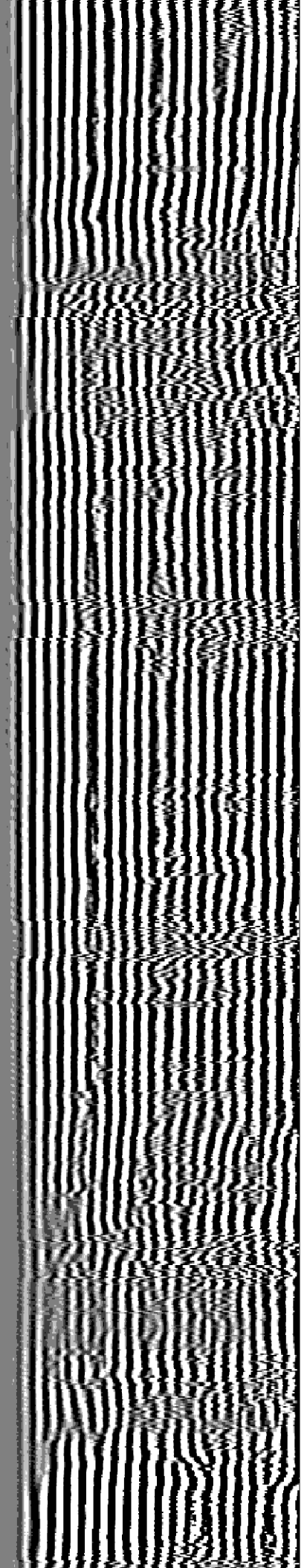
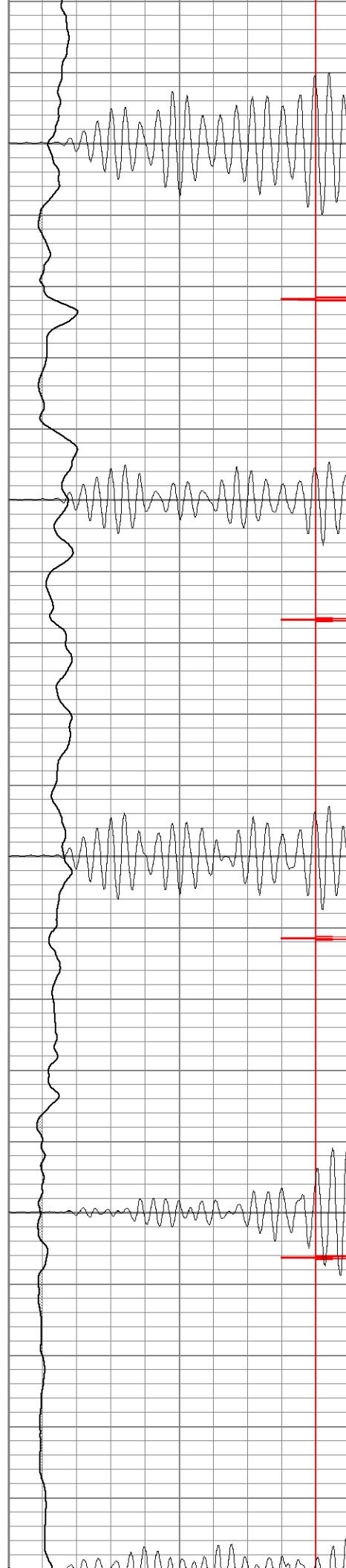
200

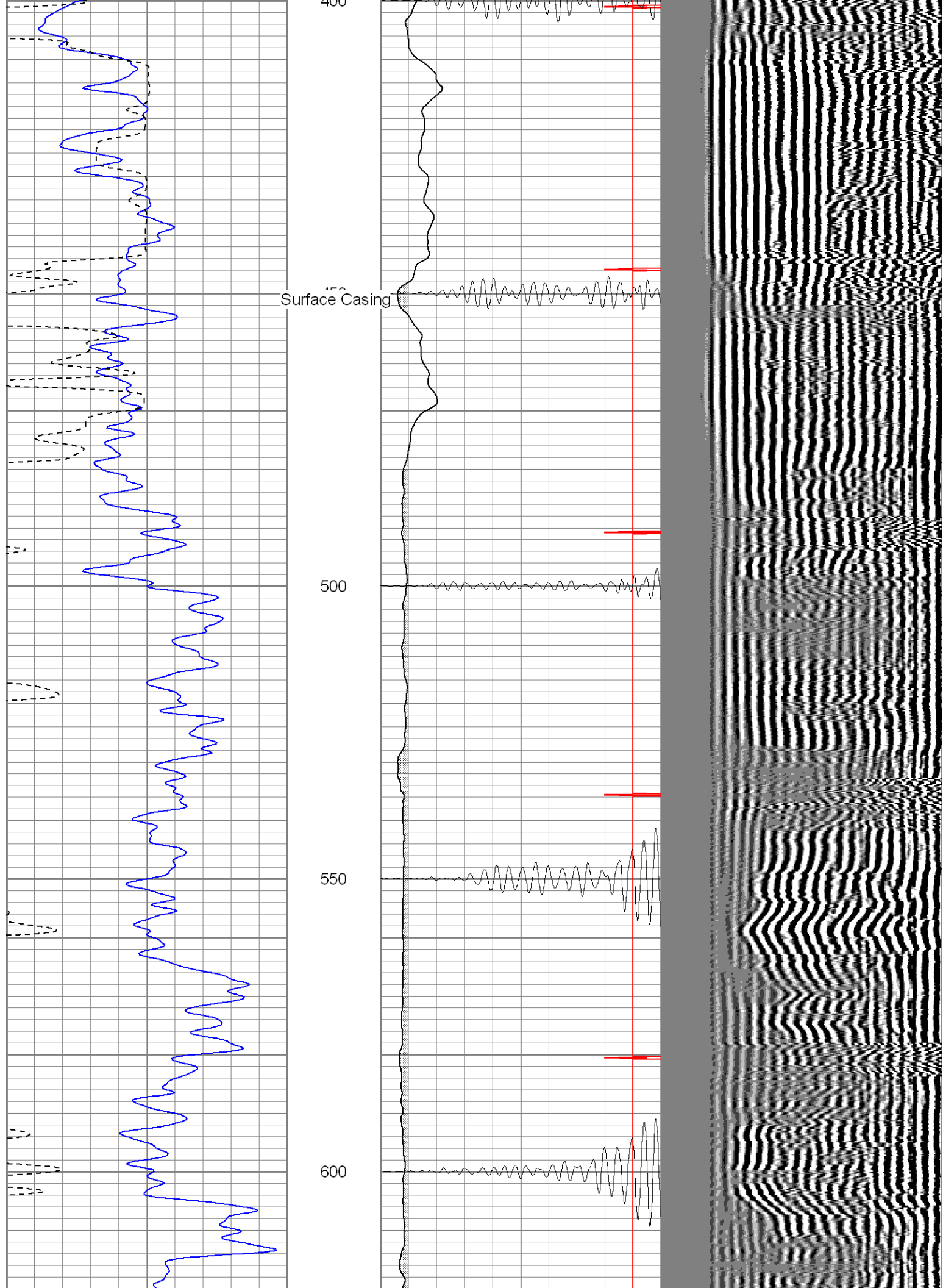
250

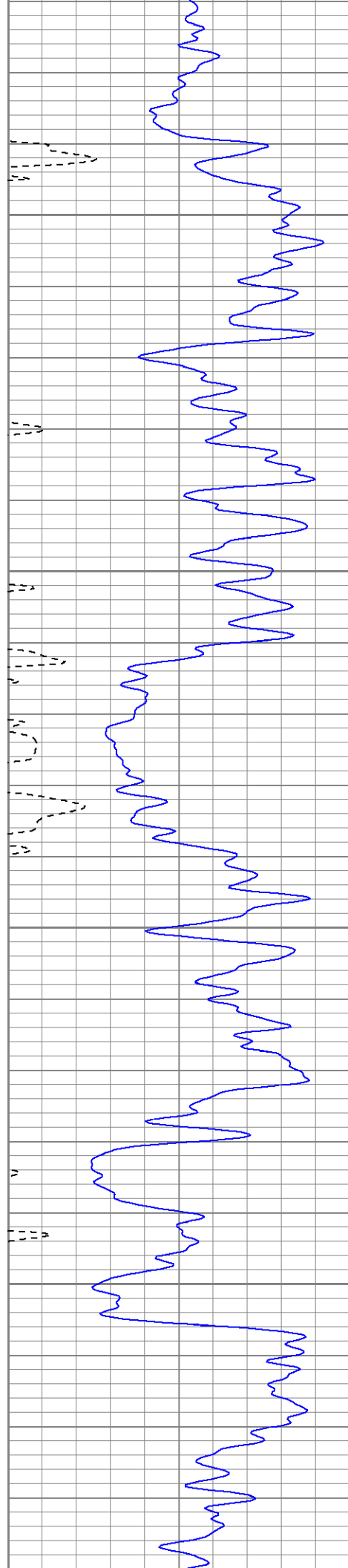
300

350

400





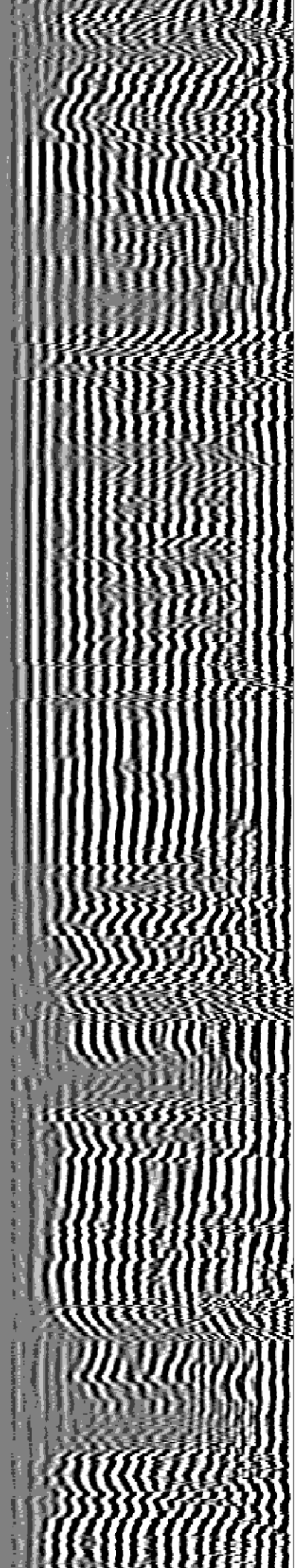
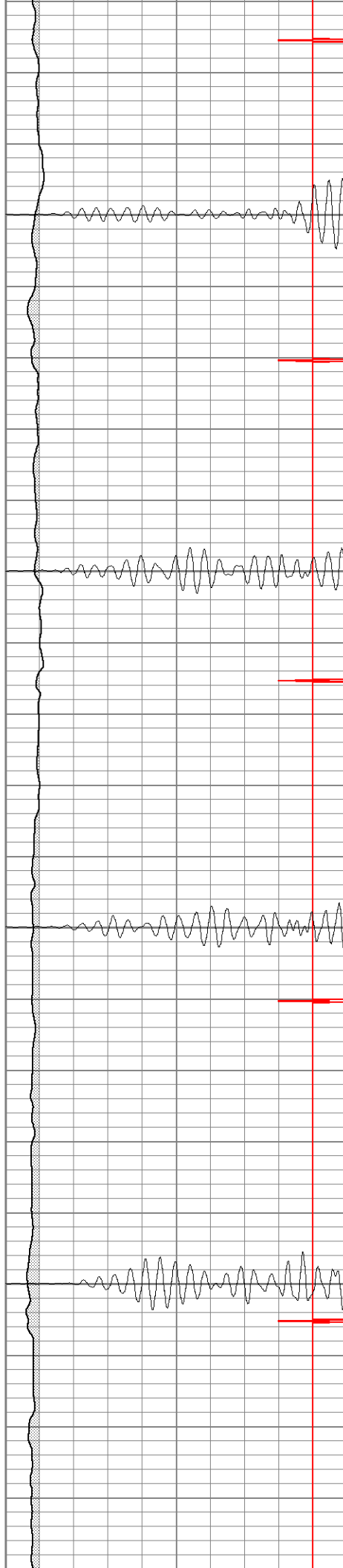


650

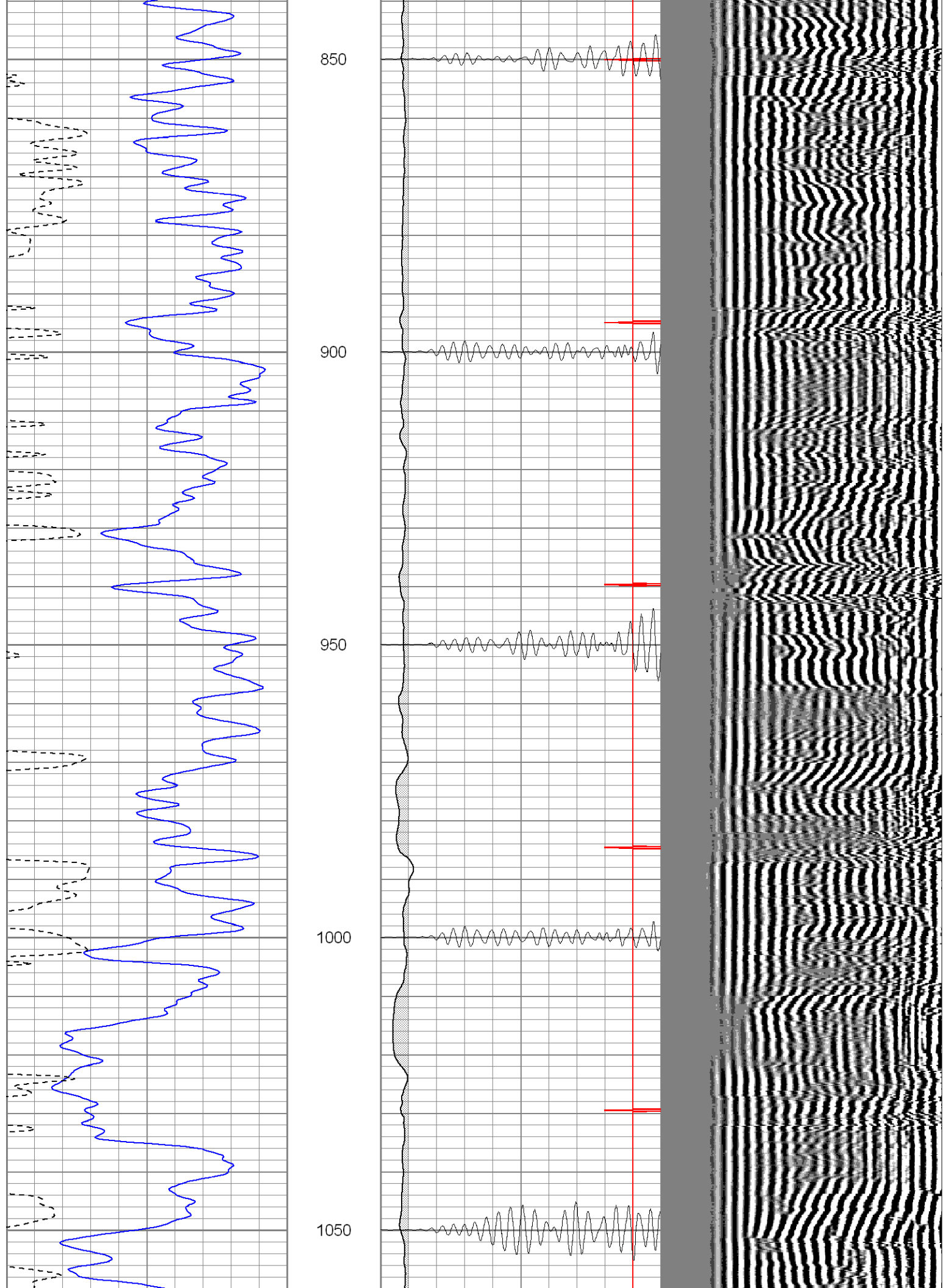
700

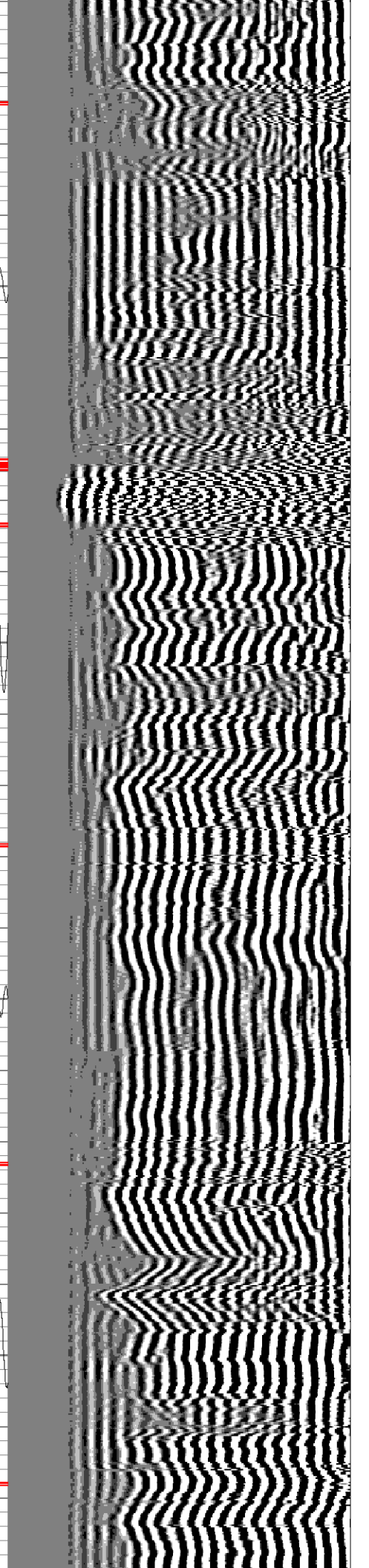
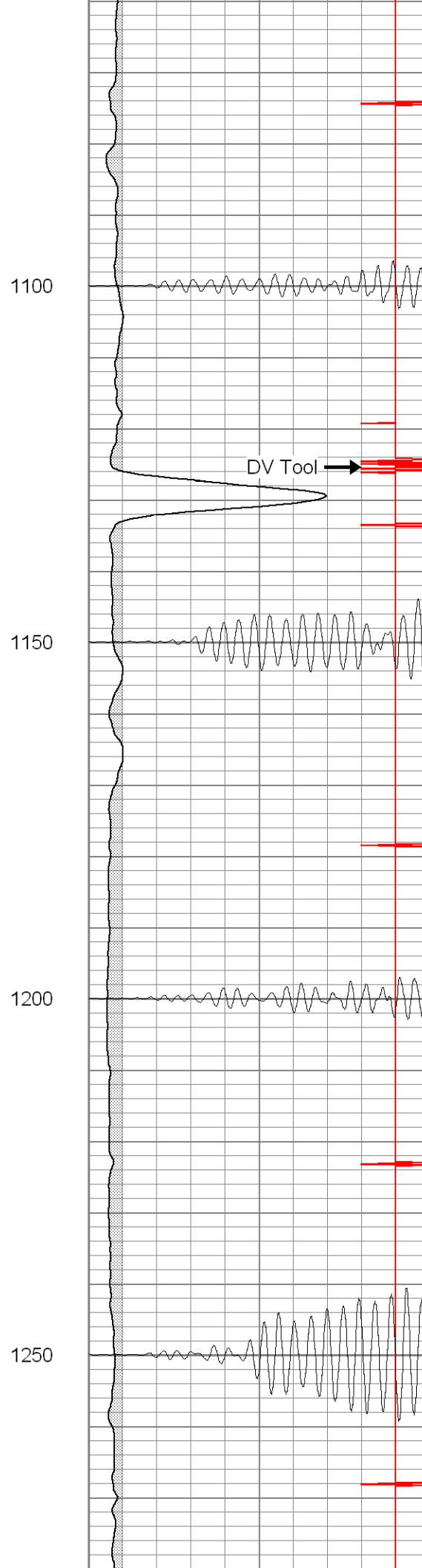
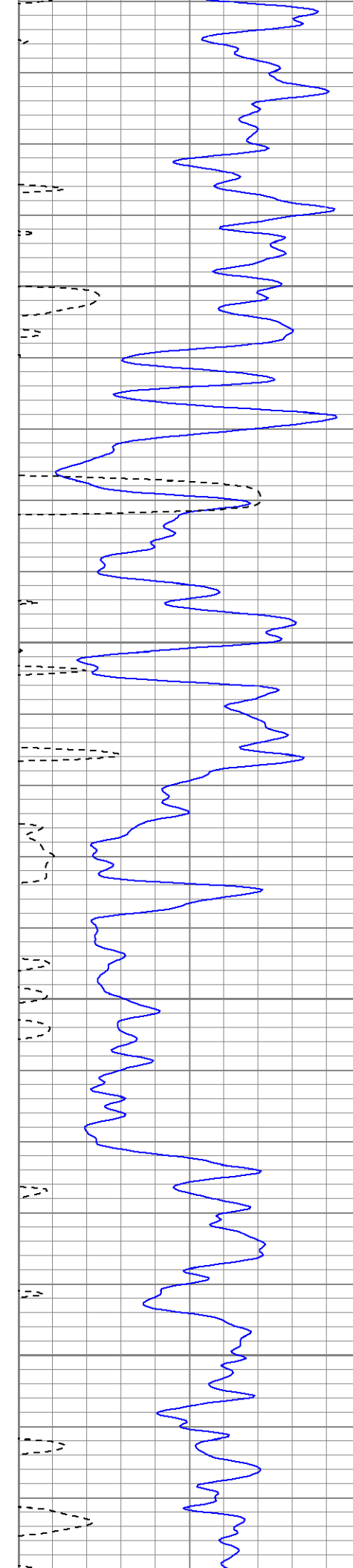
750

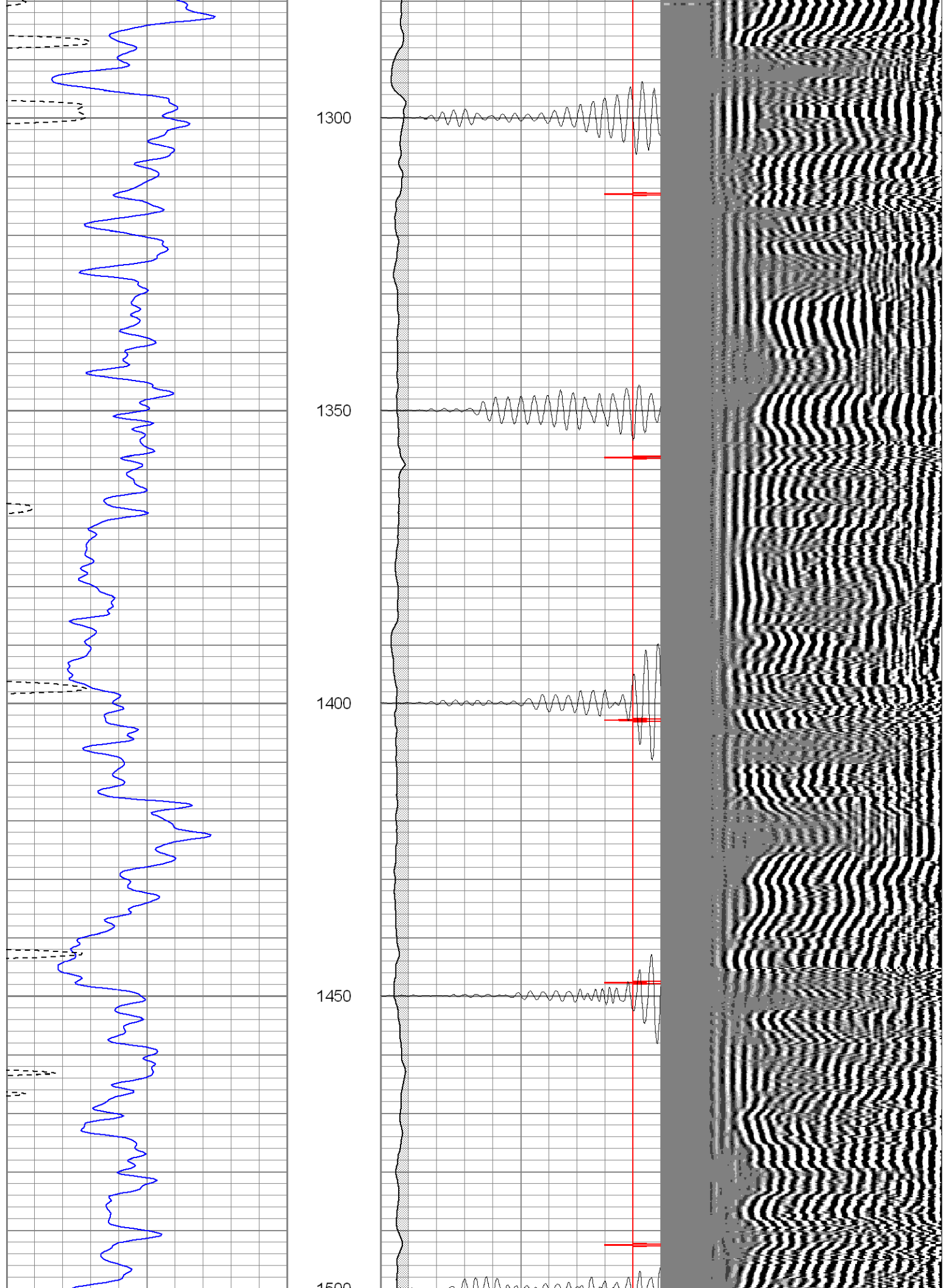
800



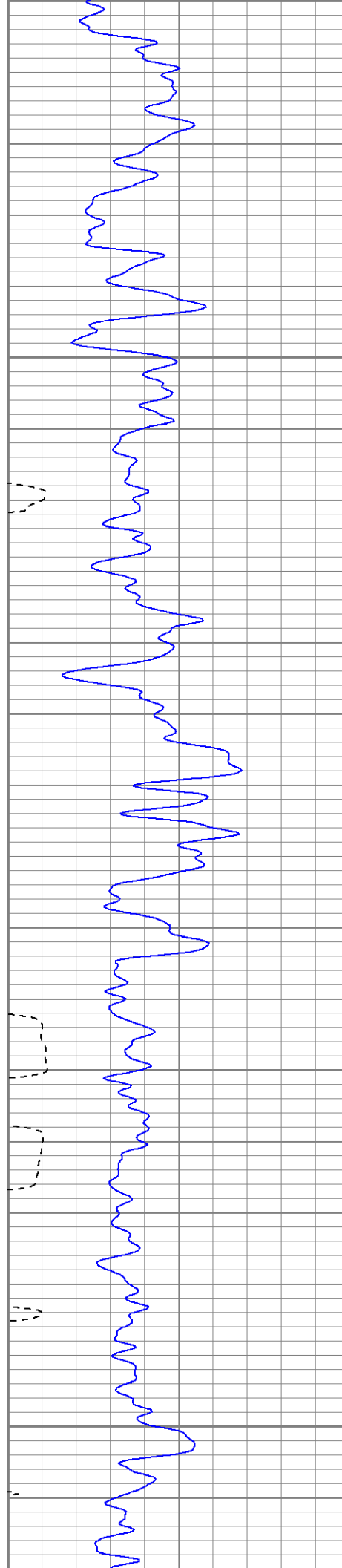




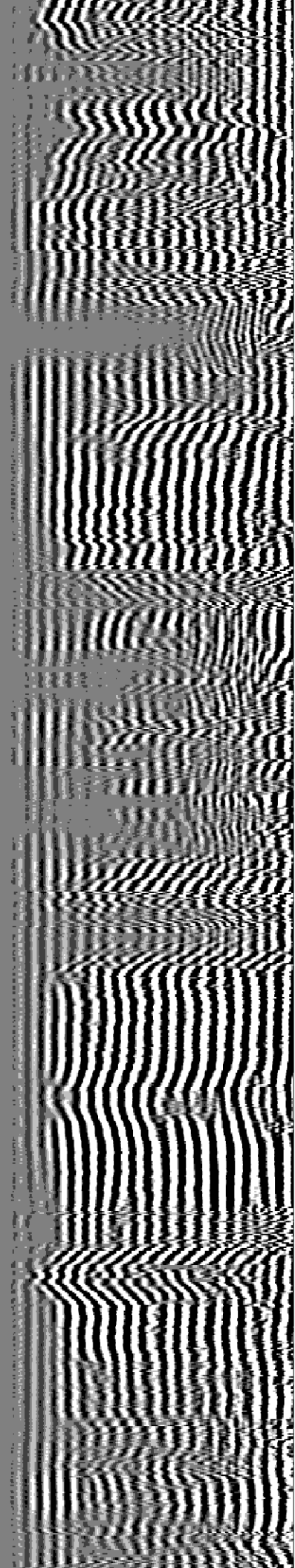


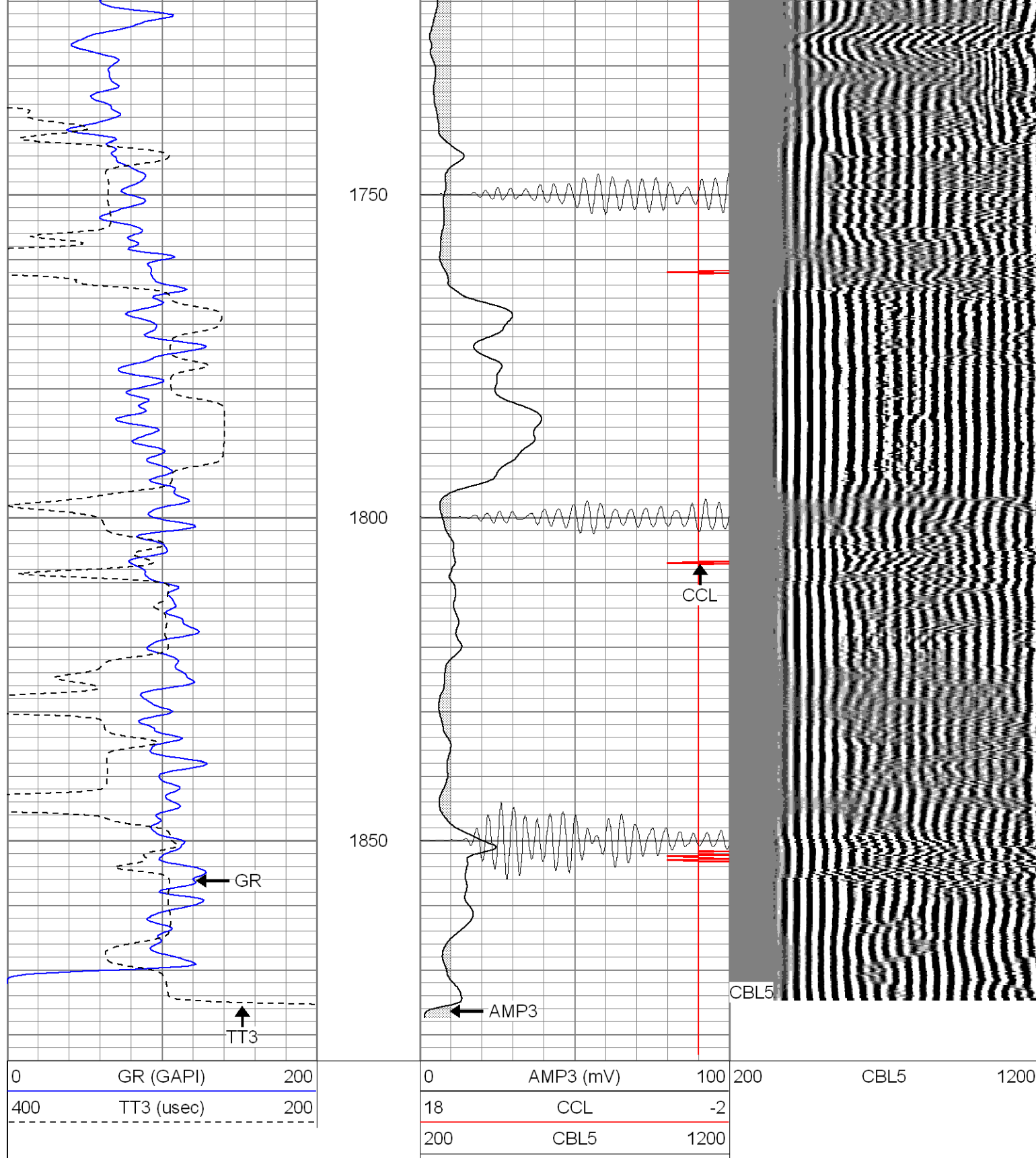






1500  
1550  
1600  
1650  
1700





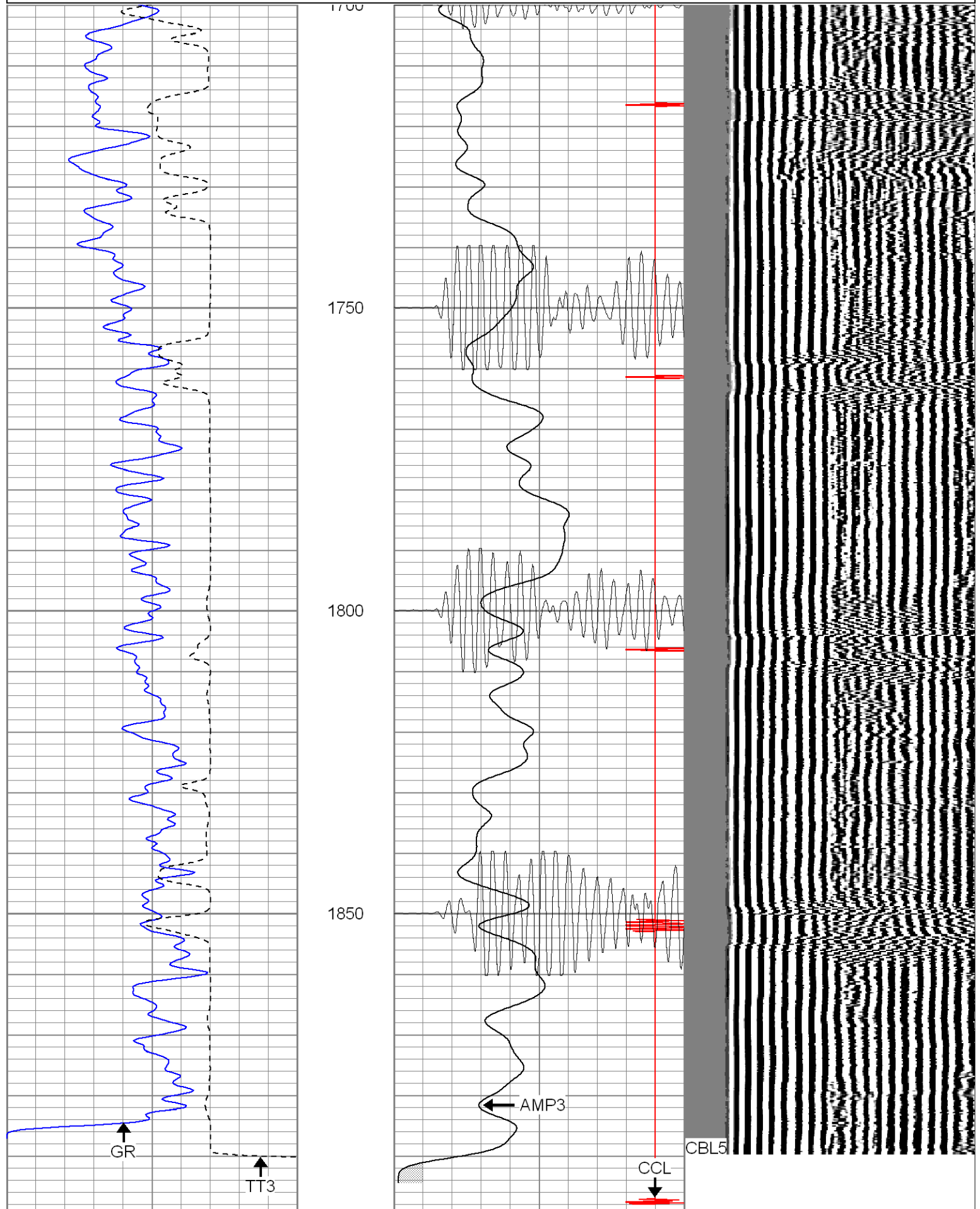
**SUPERIOR**

Black Lick, Pa.  
Mercer, Pa.  
Wooster, Oh.  
Cleveland, Ok.  
Trinidad, Co.

# Repeat Section 0 PSI

Database File: ge29-07b12807.db  
Dataset Pathname: pass3.2  
Presentation Format: cblrt  
Dataset Creation: Mon Jan 28 15:08:51 2008 by Calc Open-Cased 071220

|     |            |     |     |           |      |     |      |      |
|-----|------------|-----|-----|-----------|------|-----|------|------|
| 0   | GR (GAPI)  | 200 | 0   | AMP3 (mV) | 100  | 200 | CBL5 | 1200 |
| 400 | TT3 (usec) | 200 | 18  | CCL       | -2   |     |      |      |
|     |            |     | 200 | CBL5      | 1200 |     |      |      |



|     |            |     |     |           |      |     |      |      |
|-----|------------|-----|-----|-----------|------|-----|------|------|
| 0   | GR (GAPI)  | 200 | 0   | AMP3 (mV) | 100  | 200 | CBL5 | 1200 |
| 400 | TT3 (usec) | 200 | 18  | CCL       | -2   |     |      |      |
|     |            |     | 200 | CBL5      | 1200 |     |      |      |

### Calibration Report

Database File: ge29-07b12807.db  
Dataset Pathname: pass3.2  
Dataset Creation: Mon Jan 28 15:08:51 2008 by Calc Open-Cased 071220

### Cement Bond Log Calibration Report

Serial Number: Titan5  
Tool Model: T5  
Performed: Mon Jan 28 13:52:28 2008

Depth: 1534.11 ft  
Casing Diameter: 5.5 in

3' Spacing                      5' Spacing

Signal Zero: 0                      0                      mV  
Calibrated Amplitude: 85                      85                      mV  
Reading at Signal Zero: -0.03                      0.00891113                      V  
Reading in Free Pipe: 1.6                      2.33296                      V

Gain: 52.1472                      36.5741  
Offset: 1.56442                      -0.325917

### Gamma Ray Calibration Report

Serial Number: Titan5  
Tool Model: T2  
Performed: Fri Jan 25 09:52:08 2008

Calibrator Value: 1.0                      GAPI

Background Reading: 0.0                      cps  
Calibrator Reading: 1.0                      cps

Sensitivity: 1.2000                      GAPI/cps