

Patterson

**CEMENT BOND
GAMMA RAY**

Company XTO Energy Inc.
Well Golden Eagle 20-04
Field Purgatorie River
County Las Animas
State CO

Company XTO Energy Inc.
Well Golden Eagle 20-04
Field Purgatorie River
County Las Animas
State CO

Location: API # : 05 071 08599 00

702' FNL & 487' FWL

SEC 20 TWP 33S RGE 67W

Permanent Datum Ground Level Elevation 7697'
Log Measured From Ground Level
Drilling Measured From Ground Level

Elevation
K.B. -----
D.F. -----
G.L. 7697'

Date

12/05/05

Run Number

one

Depth Driller

1205'

Depth Logger

938'

Bottom Logged Interval

934'

Top Log Interval

10'

Open Hole Size

11.25"

Type Fluid

water

Density / Viscosity

///

Max. Recorded Temp.

82F

Estimated Cement Top

105'

Time Well Ready

8:40

Time Logger on Bottom

9:50

Equipment Number

T244

Location

Trinidad

Recorded By

Worley

Witnessed By

Borehole Record

Run Number

Bit

From

To

Size

Weight

From

To

Tubing Record

Casing Record

Surface String

Size

Wgt/Ft

Top

Bottom

18'

00

00

1193'

<<< Fold Here >>>

All interpretations are opinions based on inferences from electrical or other measurements and we cannot and do not guarantee the accuracy or correctness of any interpretation, and we shall not, except in the case of gross or willful negligence on our part, be liable or responsible for any loss, costs, damages, or expenses incurred or sustained by anyone resulting from any interpretation made by any of our officers, agents or employees. These interpretations are also subject to our general terms and conditions set out in our current Price Schedule.

Comments

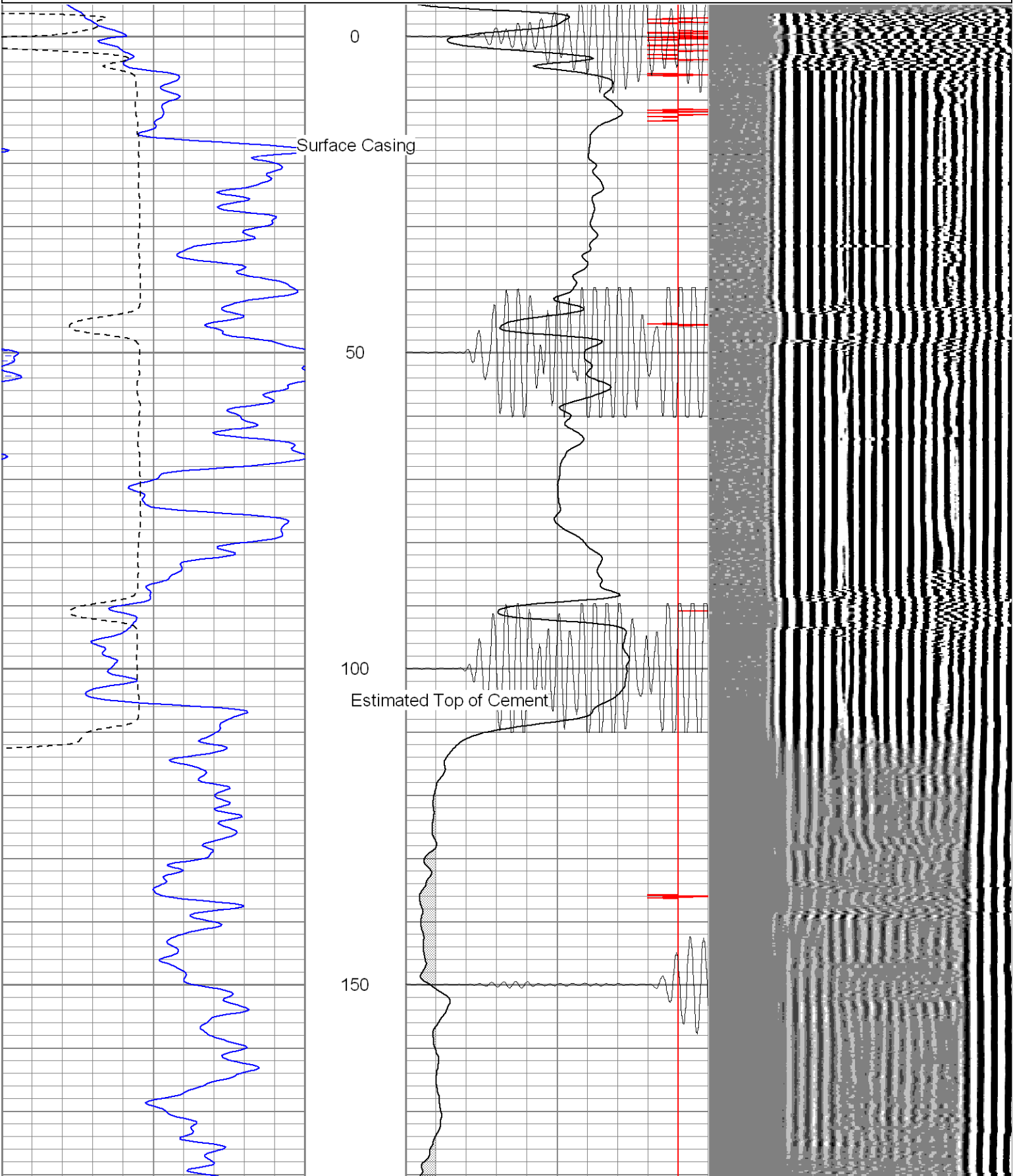
4 Miles Past Weston On Hwy 12. Right Thru Gate, Stay On Main Rd To T, Left, Stay Left Up Hill To Locatio

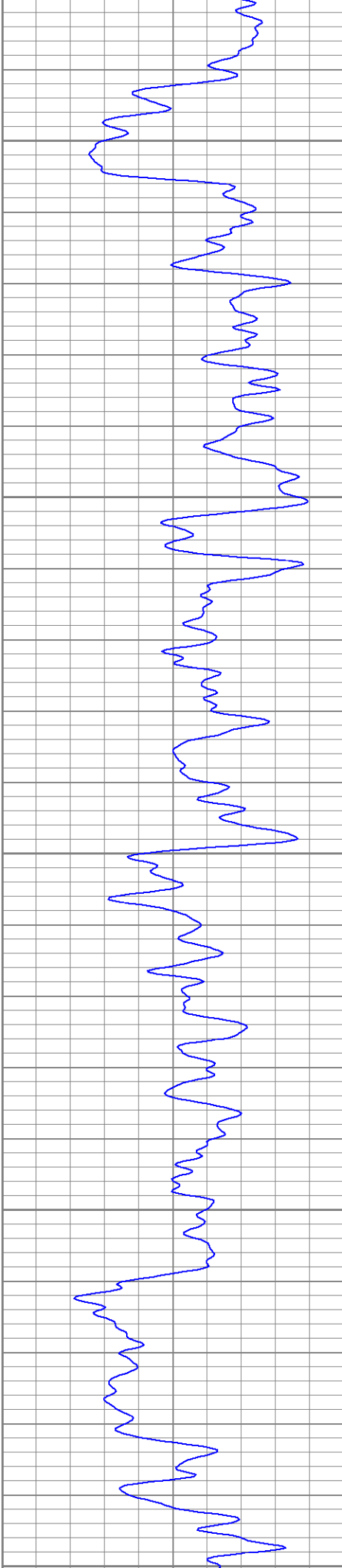
Patterson

Main Pass

Database File: ge20-04temp120505.db
Dataset Pathname: pass3.1
Presentation Format: cblrt
Dataset Creation: Mon Dec 05 10:32:54 2005 by Calc Warrior 7.0 STD Cas
Charted by: Depth in Feet scaled 1:240

0	GR (GAPI)	200	0	AMP3 (mV)	100	200	Variable Density	1200
400	TT3 (usec)	200	18	CCL	-2			
			200	CBL5	1200			





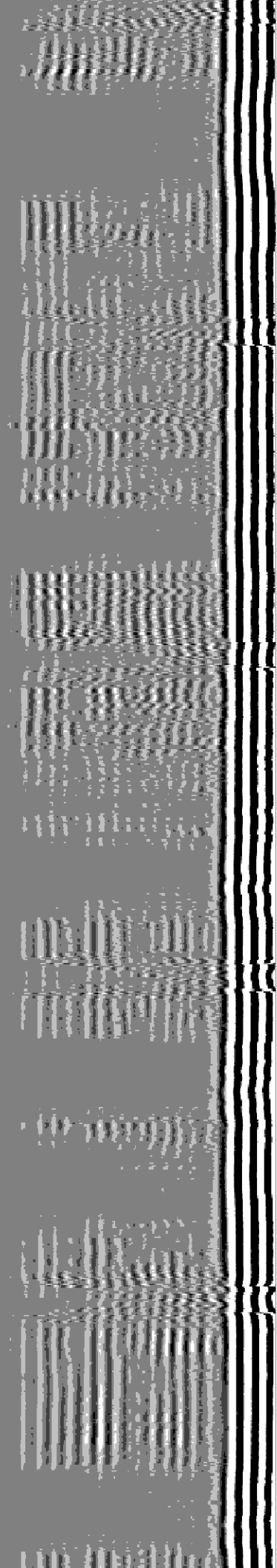
200

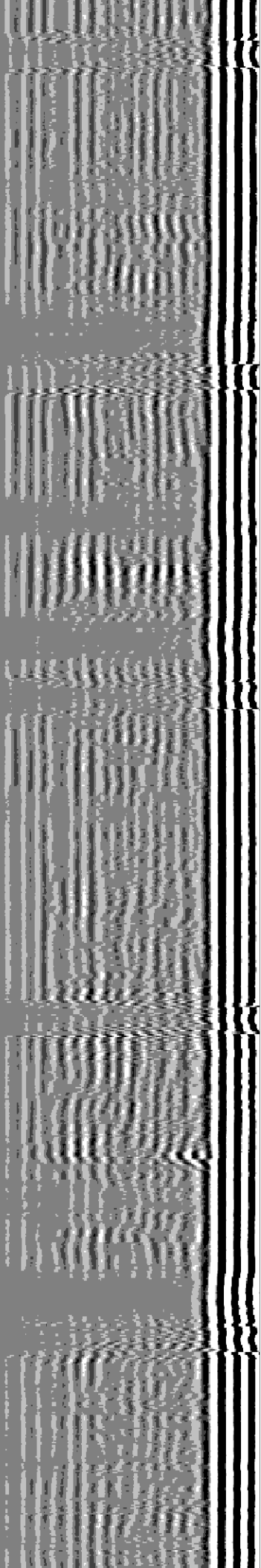
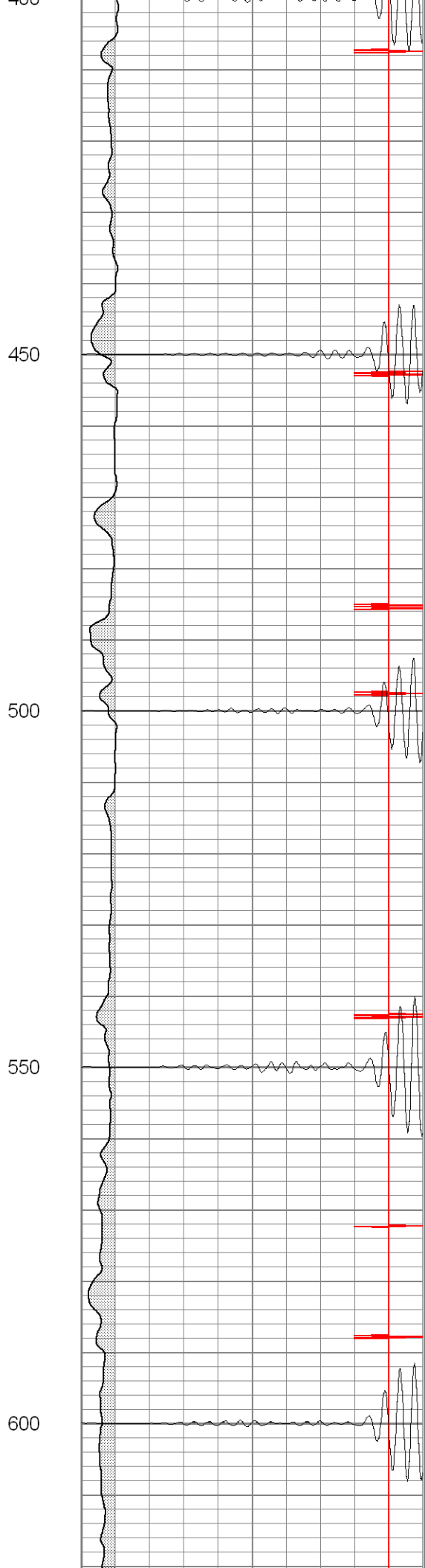
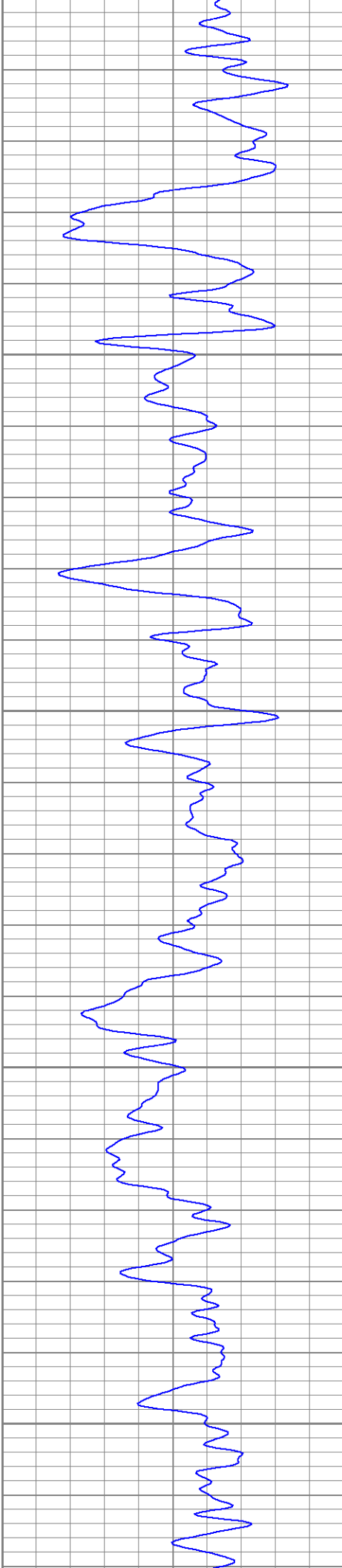
250

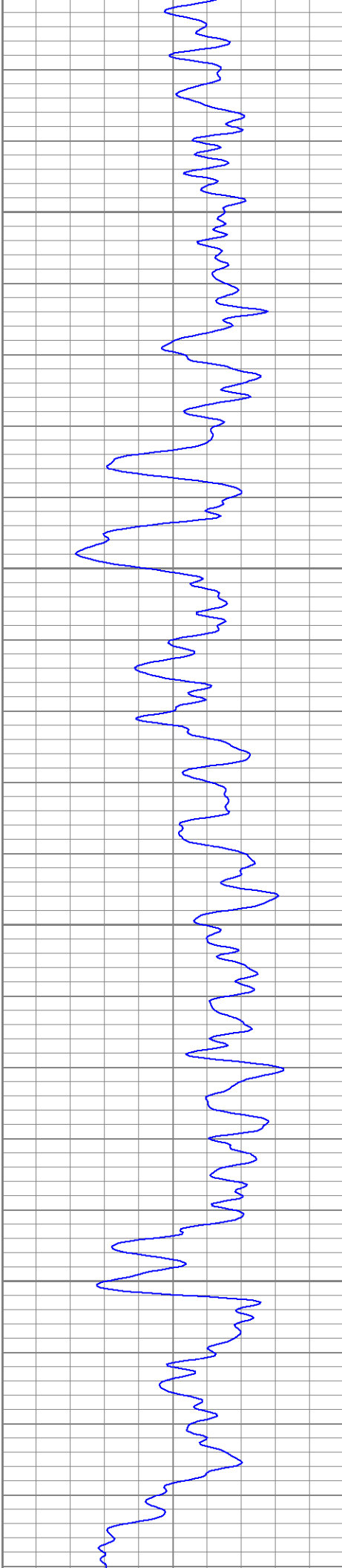
300

350

400





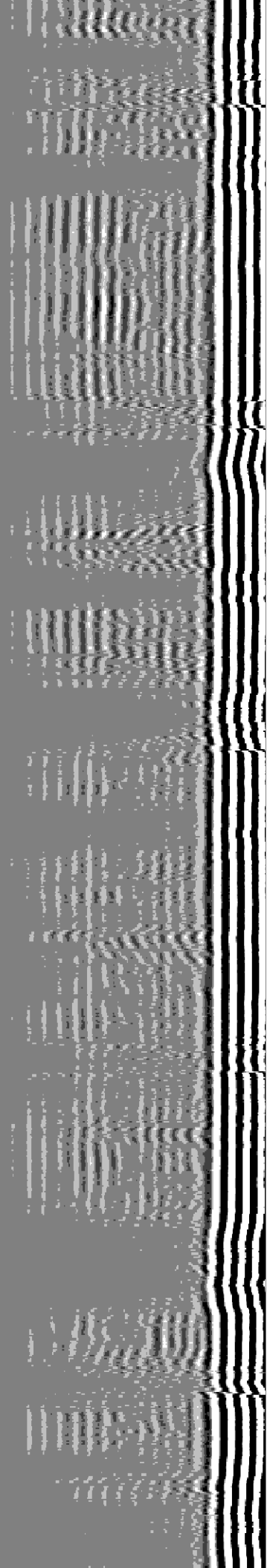
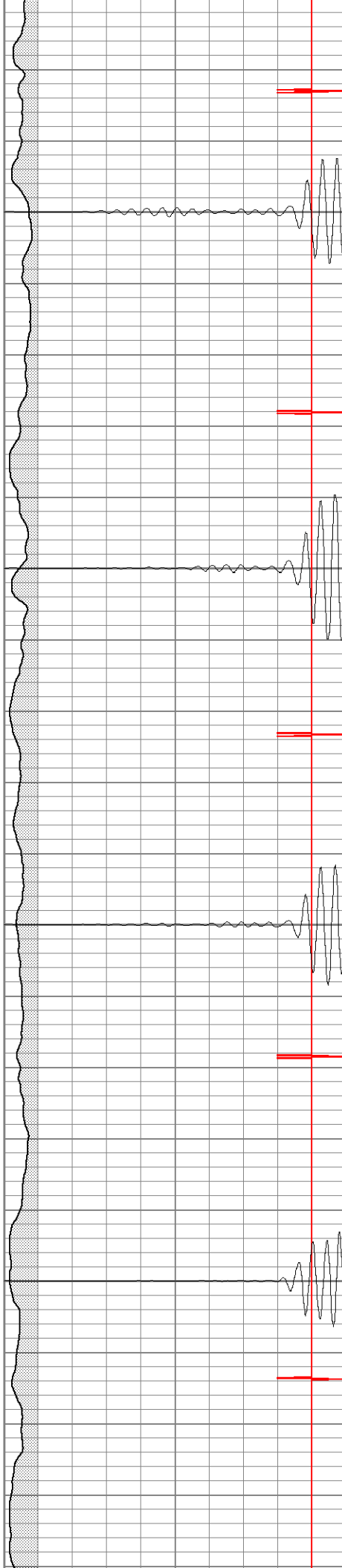


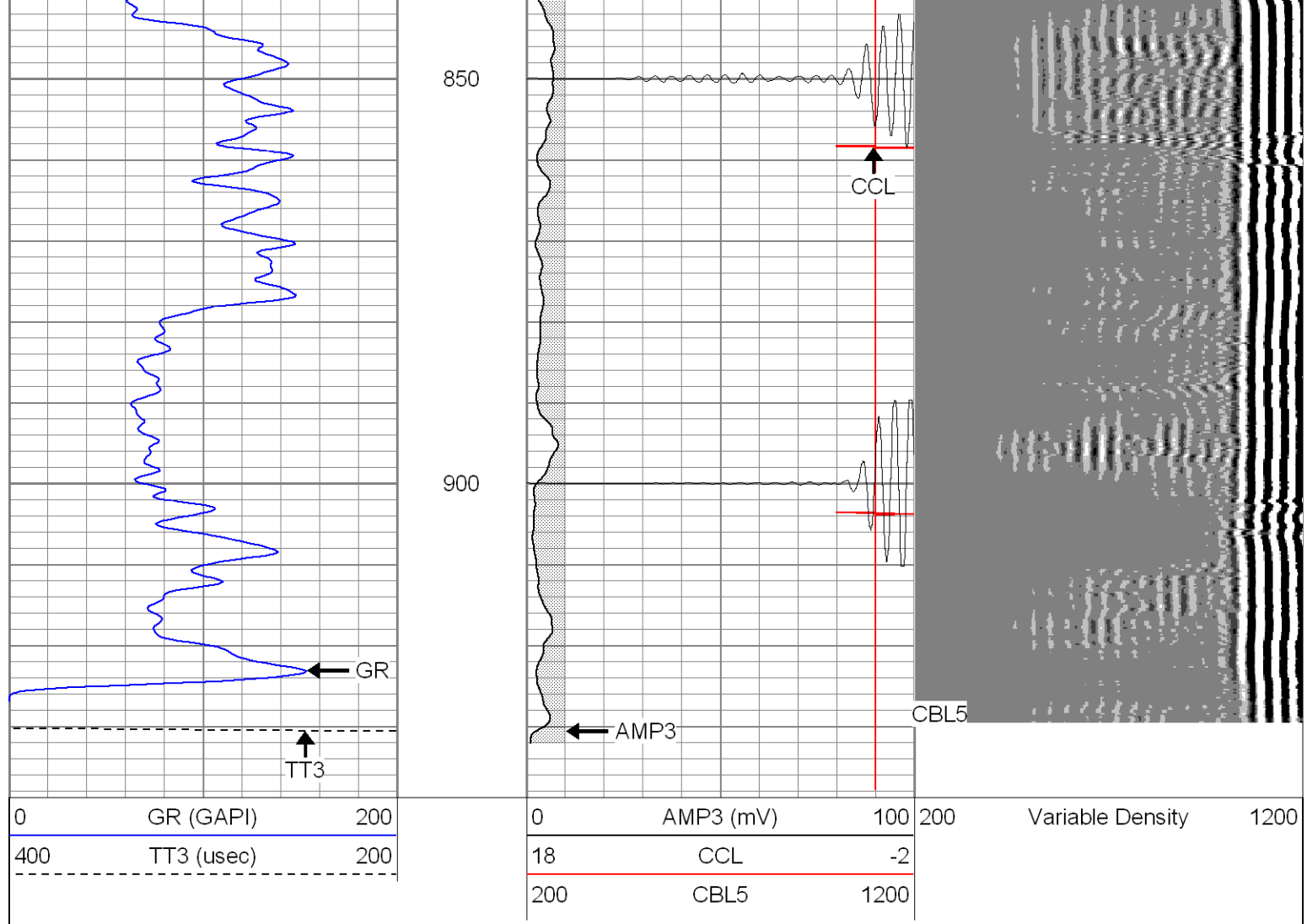
650

700

750

800





Cement Bond Log Calibration Report

Serial Number:	Titan5		
Tool Model:	2		
Performed:	Mon Dec 05 09:50:14 2005		
Depth:	0	ft	
Casing Diameter:	0	in	
	3' Spacing	5' Spacing	
Signal Zero:	0	0	mV
Calibrated Amplitude:	85	85	mV
Reading at Signal Zero:	-0.02	0	V
Reading in Free Pipe:	1.5	1.24607	V
Gain:	55.9211	68.2145	
Offset:	1.11842	0	

Gamma Ray Calibration Report

Serial Number:	Titan5	
Tool Model:	T2	
Performed:	Mon Dec 05 09:45:14 2005	
Calibrator Value:	1.0	GAPI
Background Reading:	0.0	cps
Calibrator Reading:	1.0	cps
Sensitivity:	1.3000	GAPI/cps

CONFIDENTIAL