



SUPERIOR
Black Lick, Pa.
Mercer, Pa.
Wooster, Oh.
Cleveland, Ok.
Trinidad, Co.

CEMENT BOND GAMMA RAY 1000 PSI

Company XTO Energy Inc.
Well Golden Eagle 32-04
Field Purgatorie River
County Las Animas
State CO

Company XTO Energy Inc.
Well Golden Eagle 32-04
Field Purgatorie River
County Las Animas
State CO

Location: API # : 05 071 09140 00

SEC 32 TWP 33S RGE 67W
487' FNL & 74' FWL

Other Services
PRES
CONTROL

Permanent Datum Ground Level Elevation 7501'
Log Measured From Ground Level
Drilling Measured From Ground Level

Elevation
K.B. -----
D.F. -----
G.L. 7501'

Date	8/22/07			
Run Number	one			
Depth Driller	2155'			
Depth Logger	2073'			
Bottom Logged Interval	2069'			
Top Log Interval	Surf.			
Open Hole Size	7 7/8"			
Type Fluid	water			
Density / Viscosity	///			
Max. Recorded Temp.	///			
Estimated Cement Top	34'			
Time Well Ready	8:45			
Time Logger on Bottom	8:55			
Equipment Number	0703			
Location	Trinidad			
Recorded By	Worley			
Witnessed By	Mr. Polley			
Run Number	Borehole Record		Tubing Record	
	Bit	From	To	To
Casing Record	Size	Wgt/Ft	Top	Bottom
Surface String	8 5/8"		00	496'
Prot. String				
Production String	5 1/2"		00	NA
Liner				

<<< Fold Here >>>

All interpretations are opinions based on inferences from electrical or other measurements and we cannot and do not guarantee the accuracy or correctness of any interpretation, and we shall not, except in the case of gross or willful negligence on our part, be liable or responsible for any loss, costs, damages, or expenses incurred or sustained by anyone resulting from any interpretation made by any of our officers, agents or employees. These interpretations are also subject to our general terms and conditions set out in our current Price Schedule.

Comments

Second Bosque entrance four miles past Weston, first left, first right,
at Y stay right, drive thru 29-15 and 32-03, dead end on location.

CBL ran under 1000 PSI.

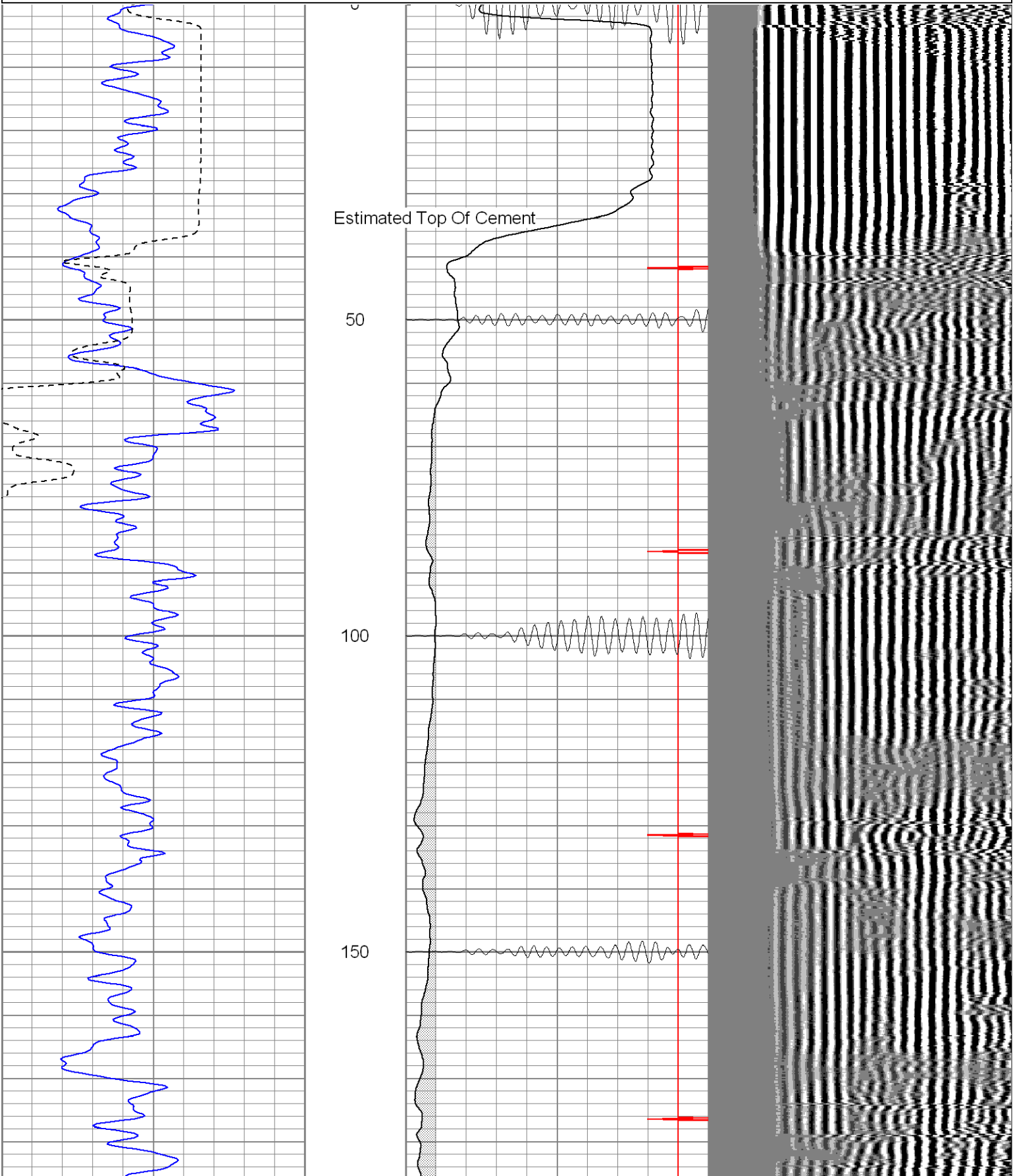


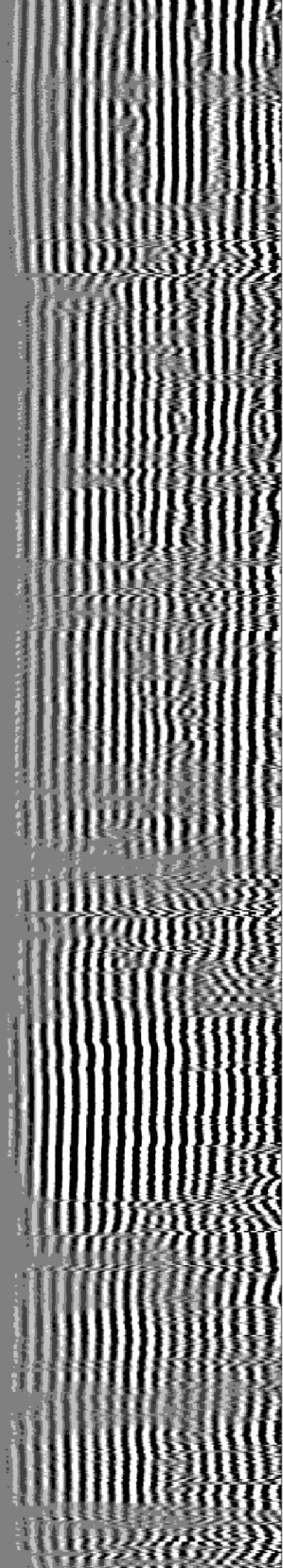
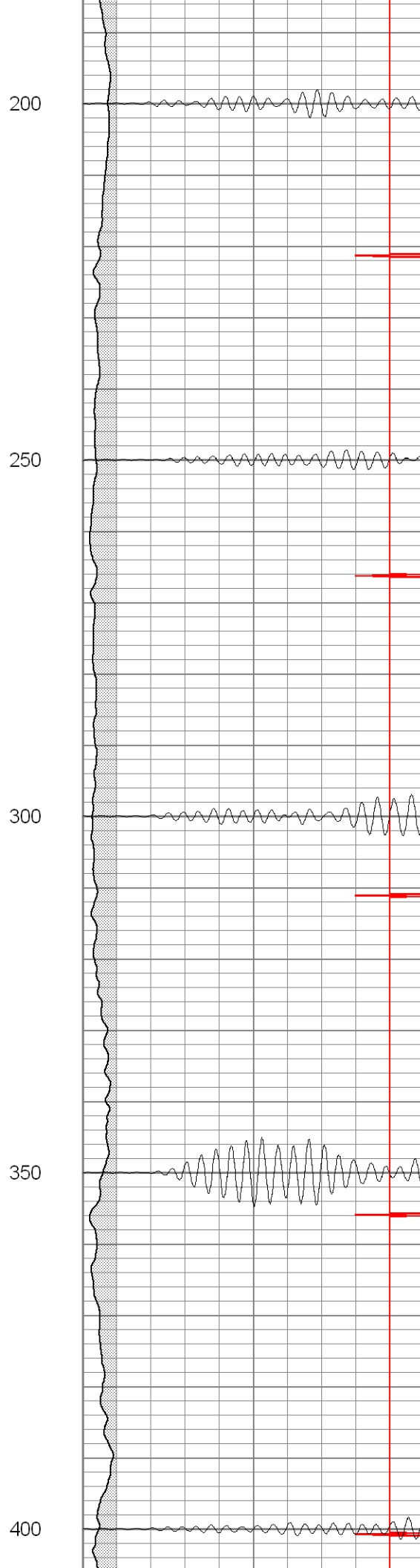
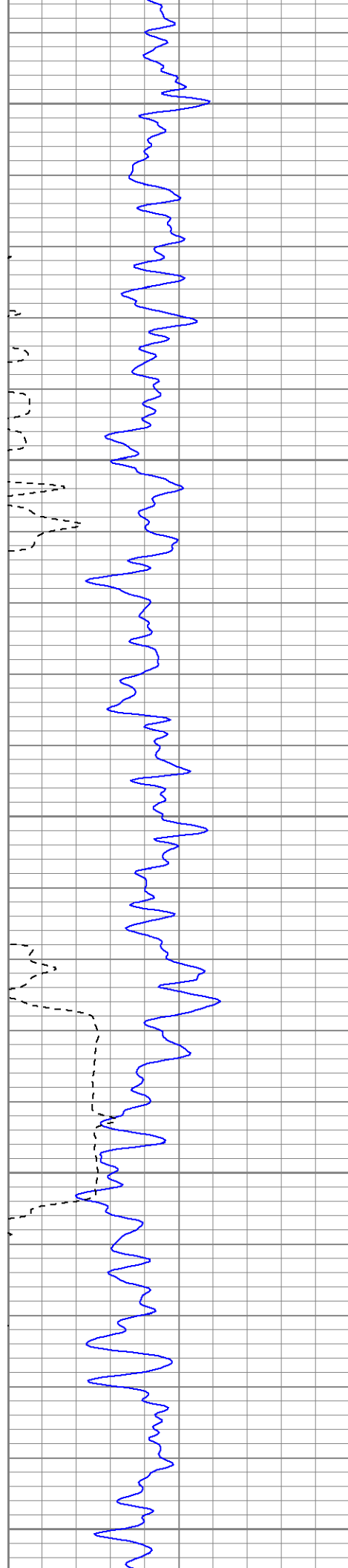
SUPERIOR

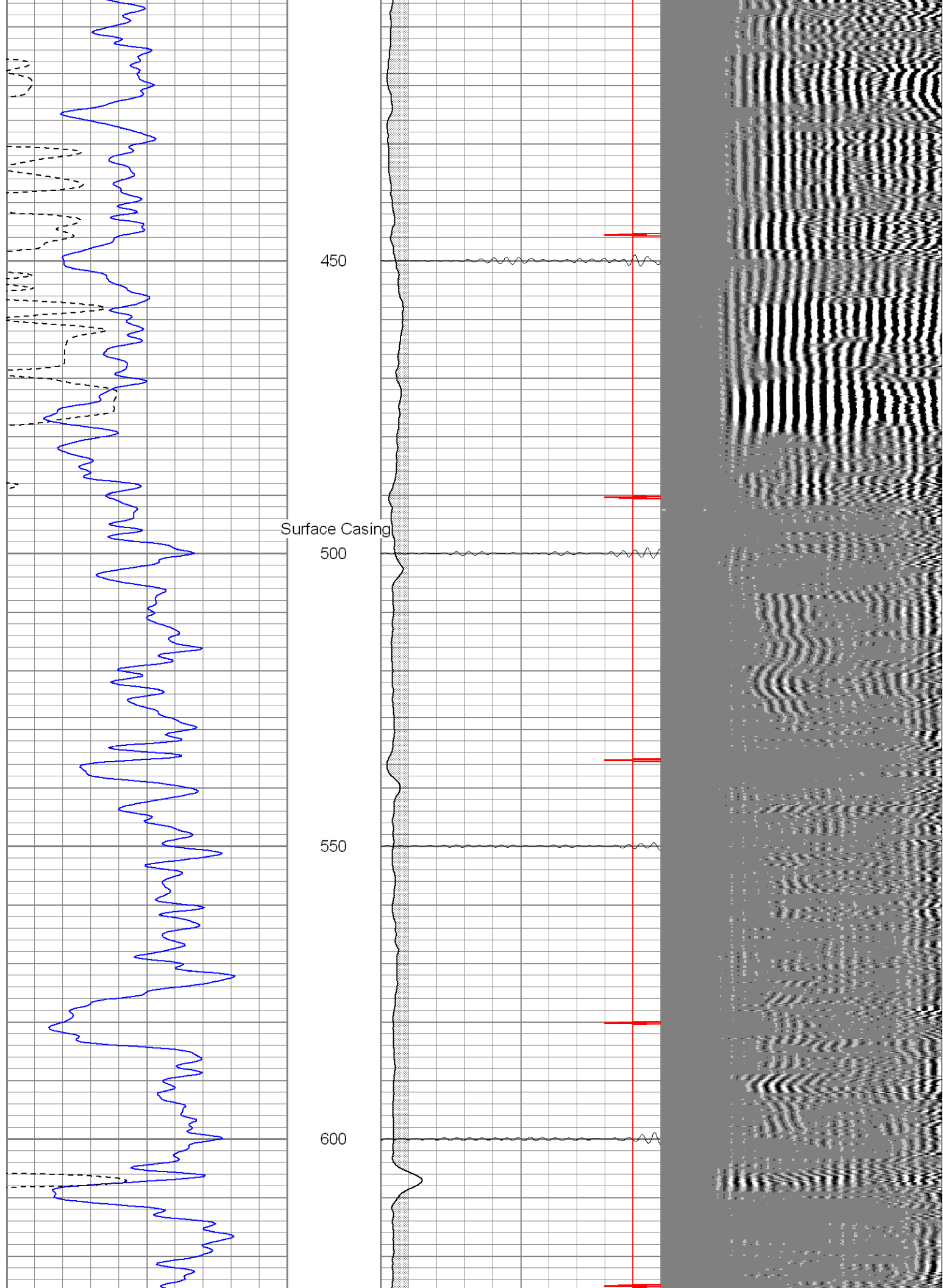
Black Lick, Pa.
Mercer, Pa.
Wooster, Oh.
Cleveland, Ok.
Trinidad, Co.

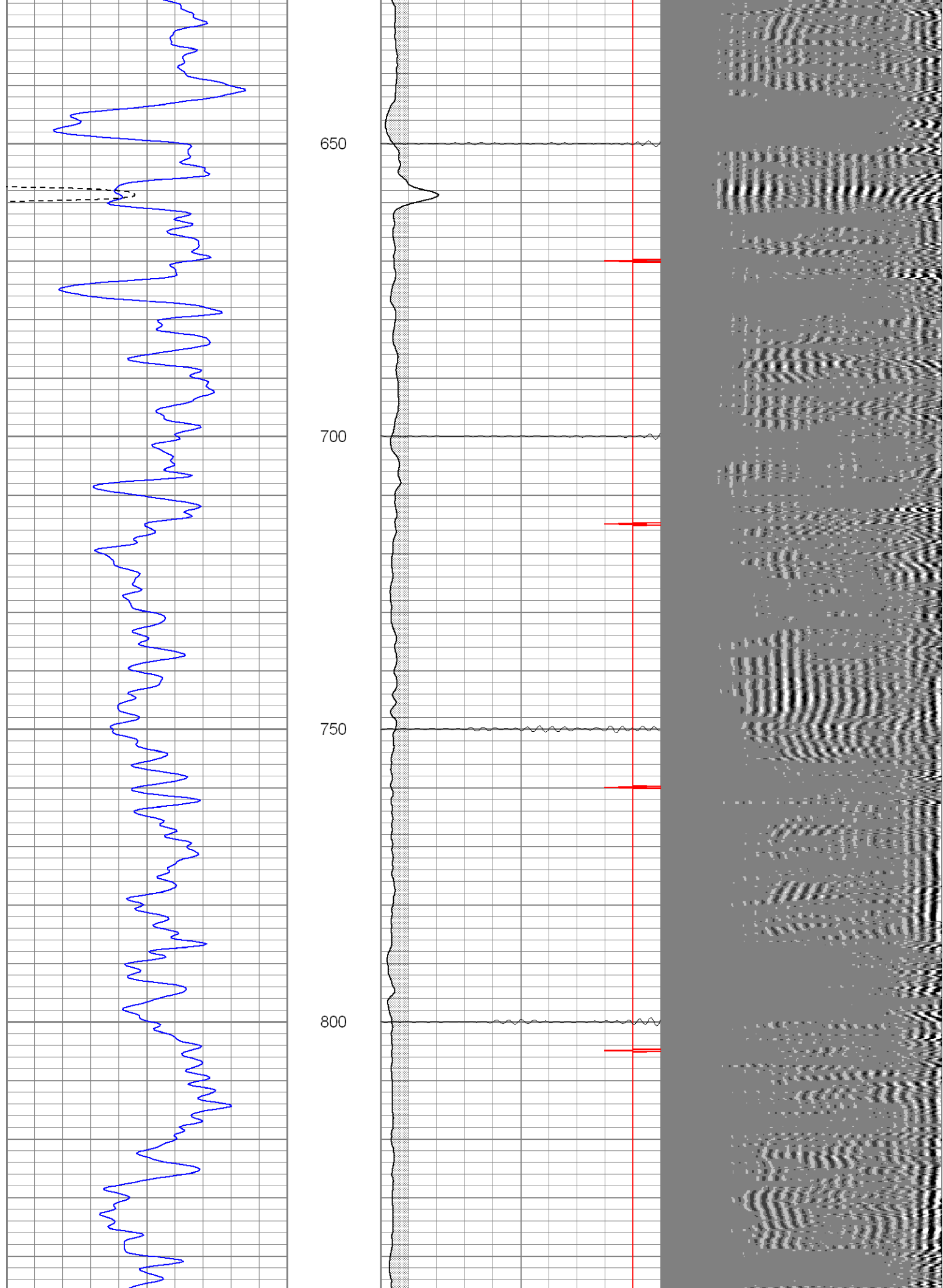
Main Pass 1000 PSI

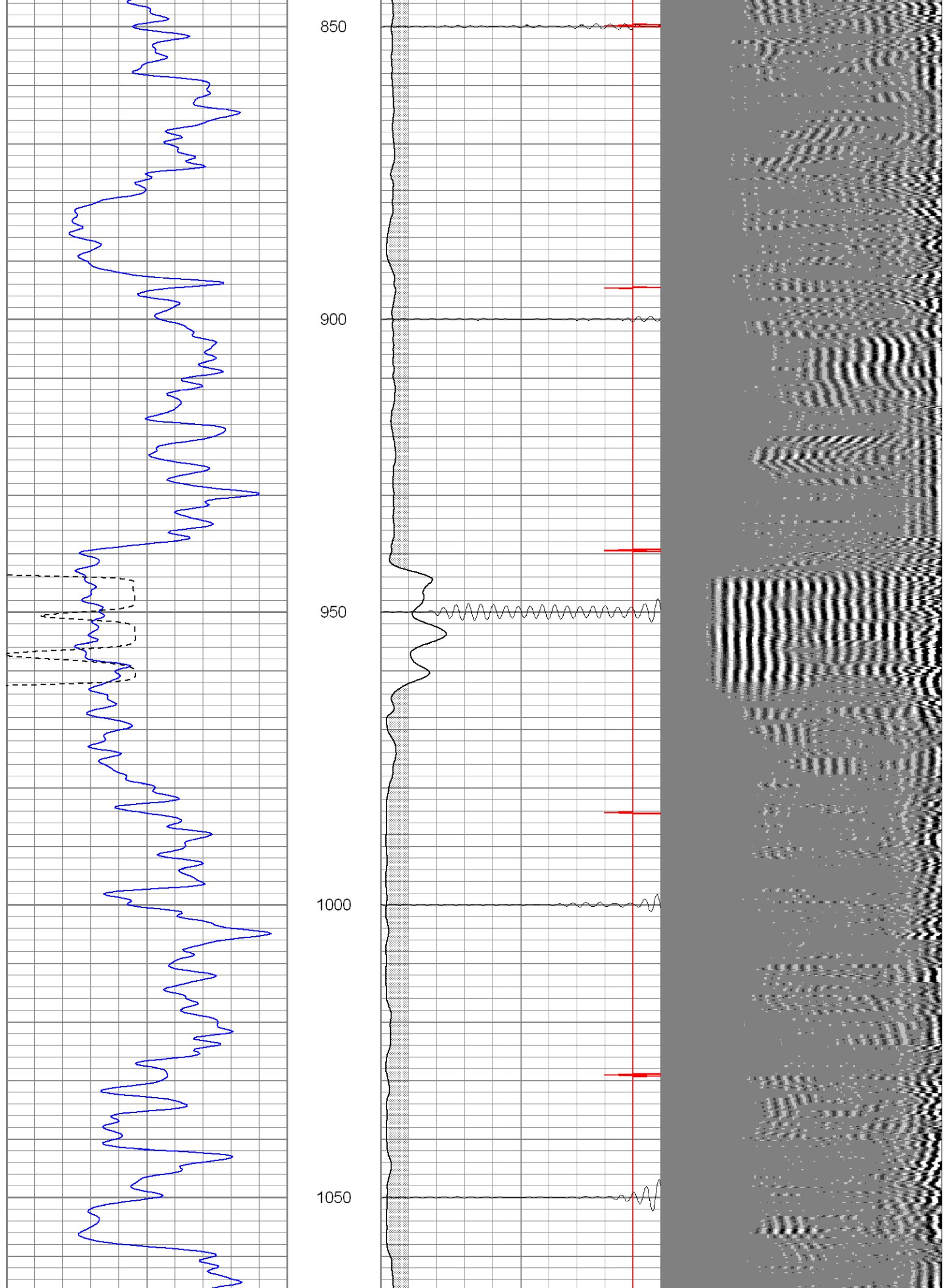
0	GR (GAPI)	200	0	AMP3 (mV)	100	200	CBL5	1200
400	TT3 (usec)	200	18	CCL	-2			
			200	CBL5	1200			

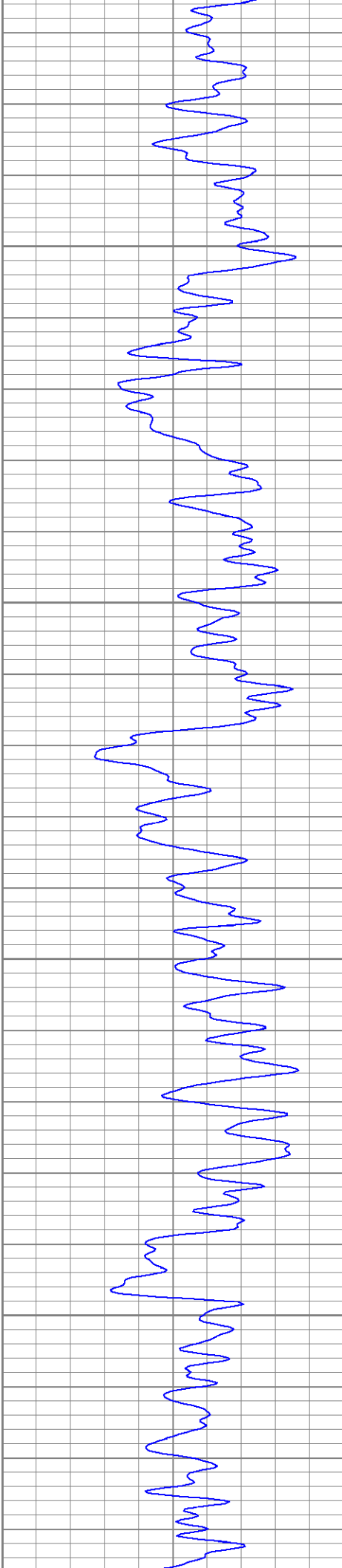










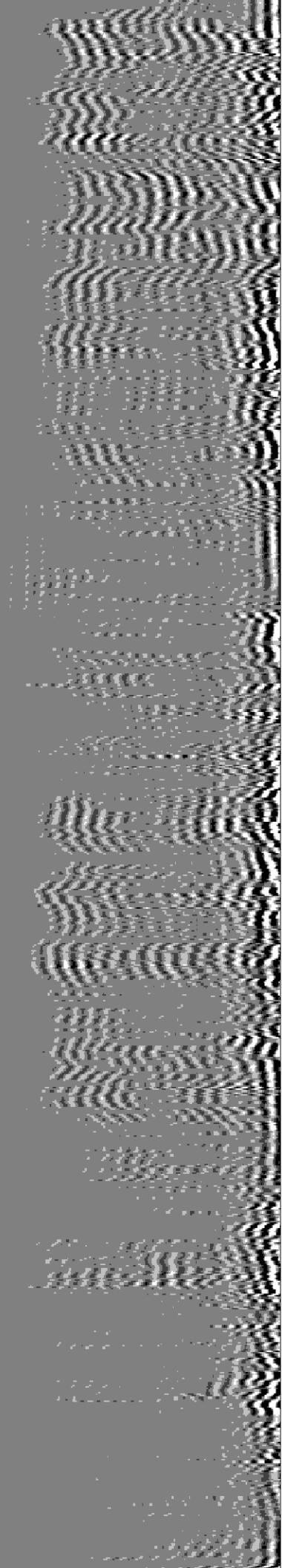
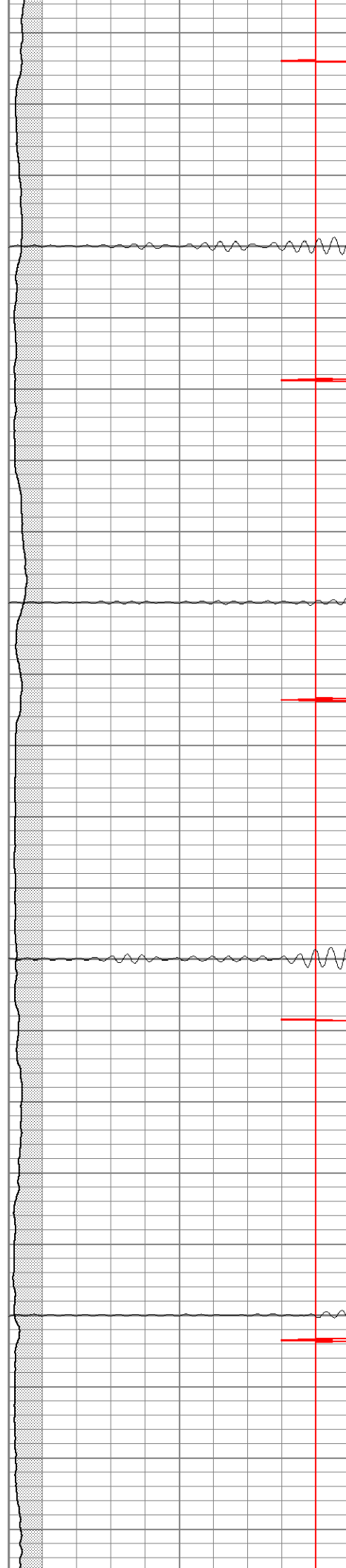


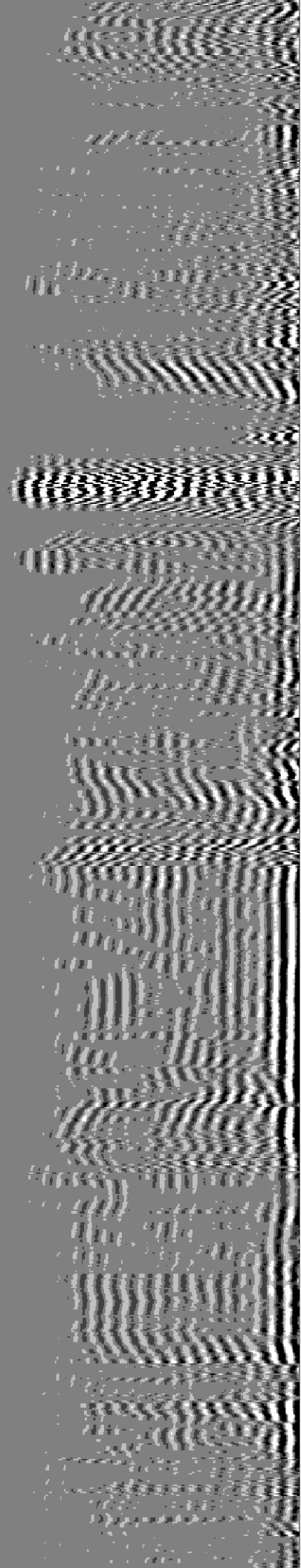
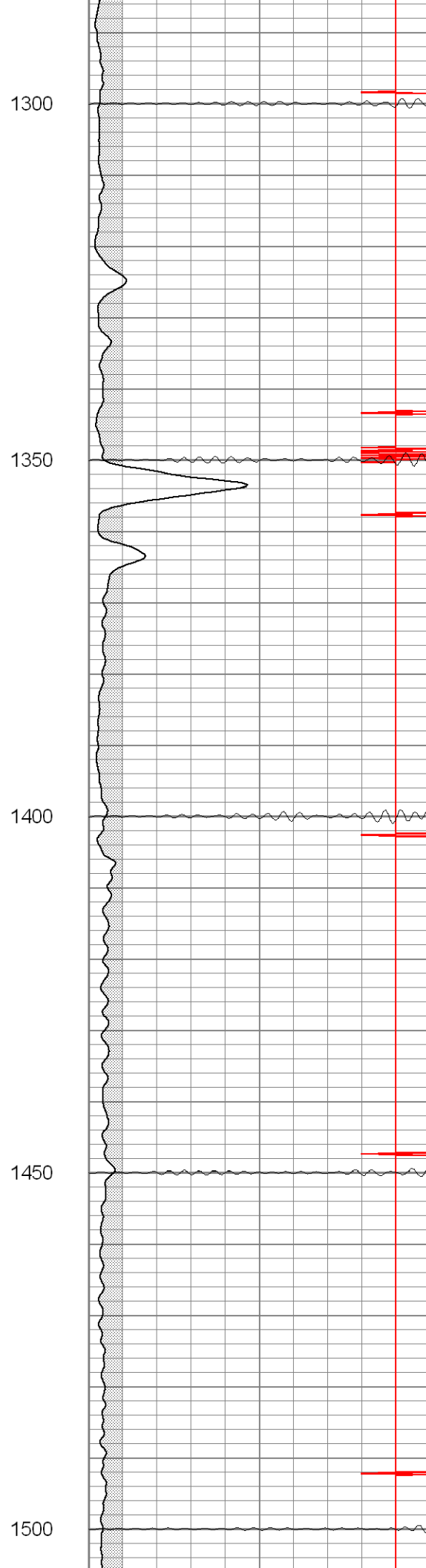
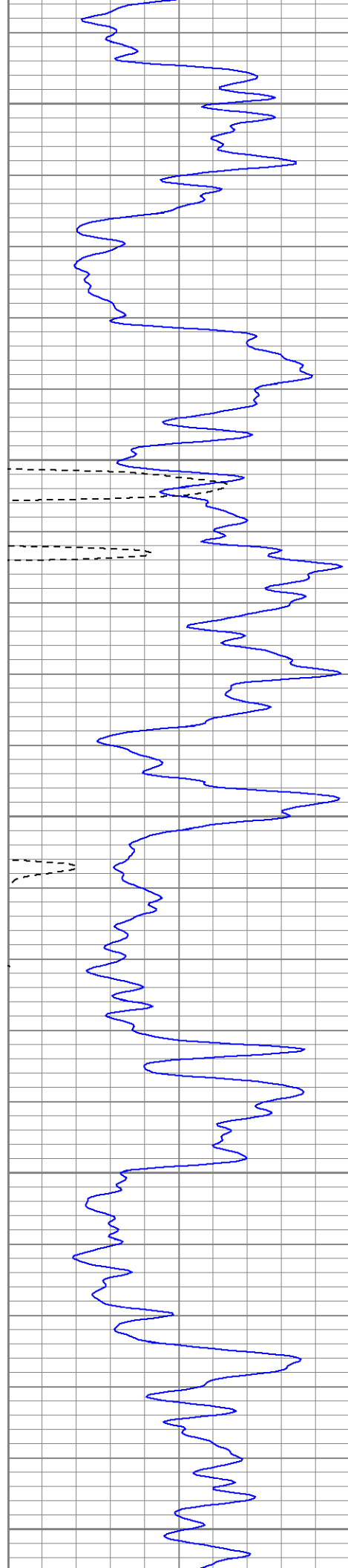
1100

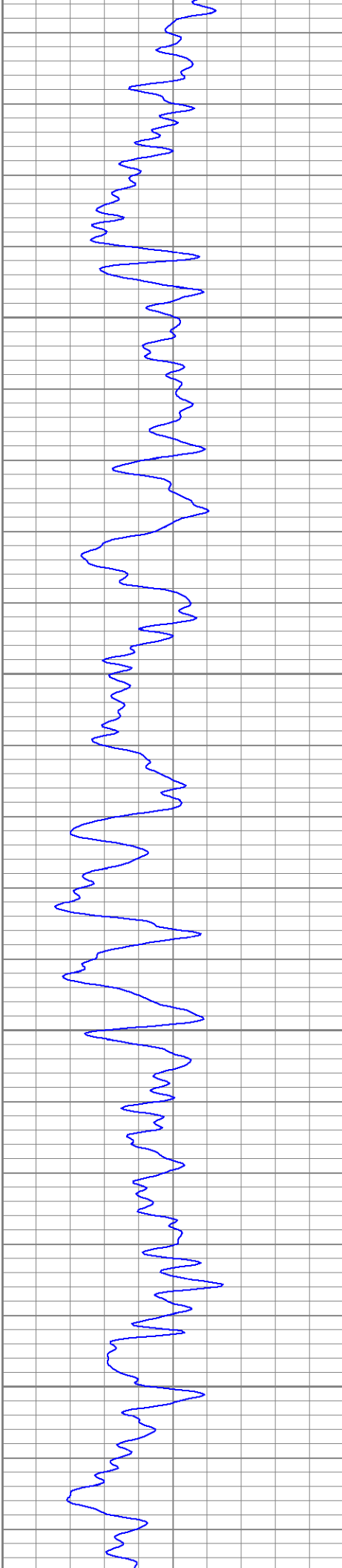
1150

1200

1250





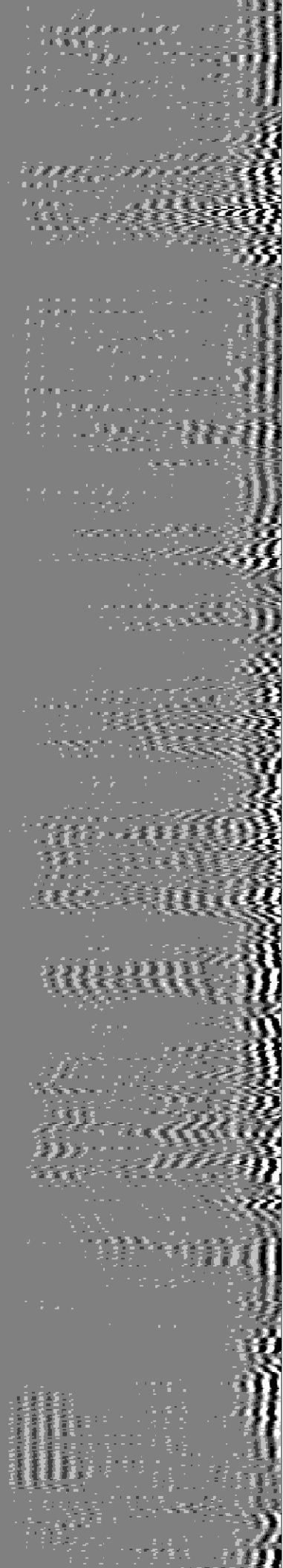
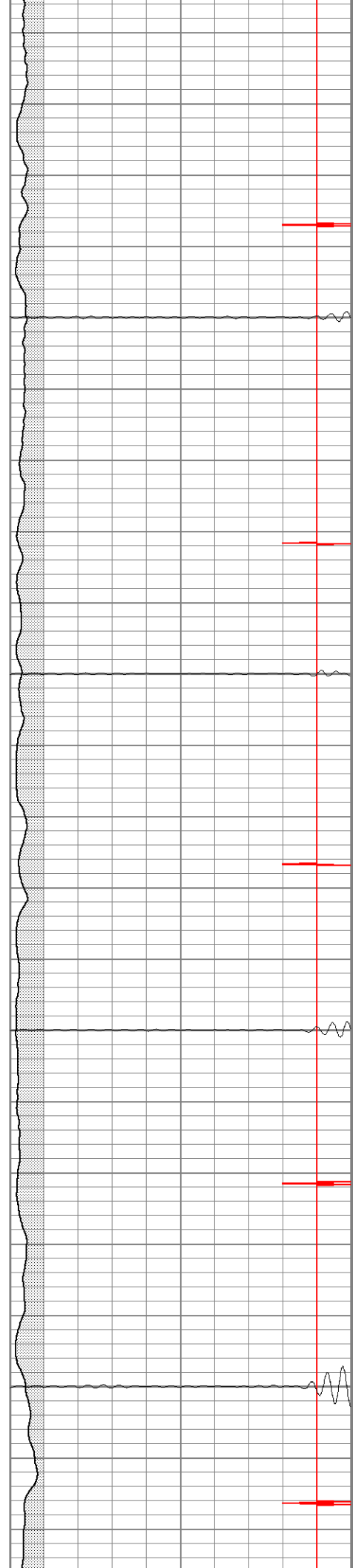


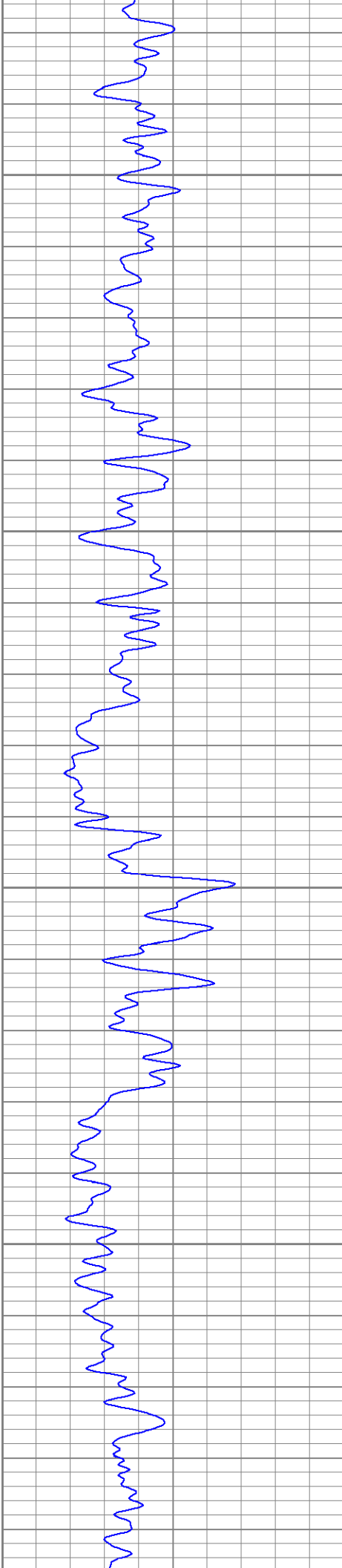
1550

1600

1650

1700



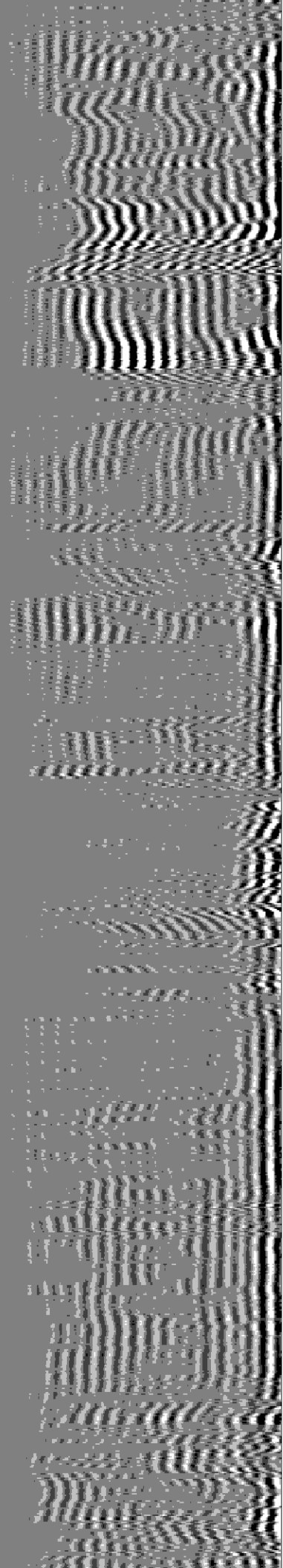
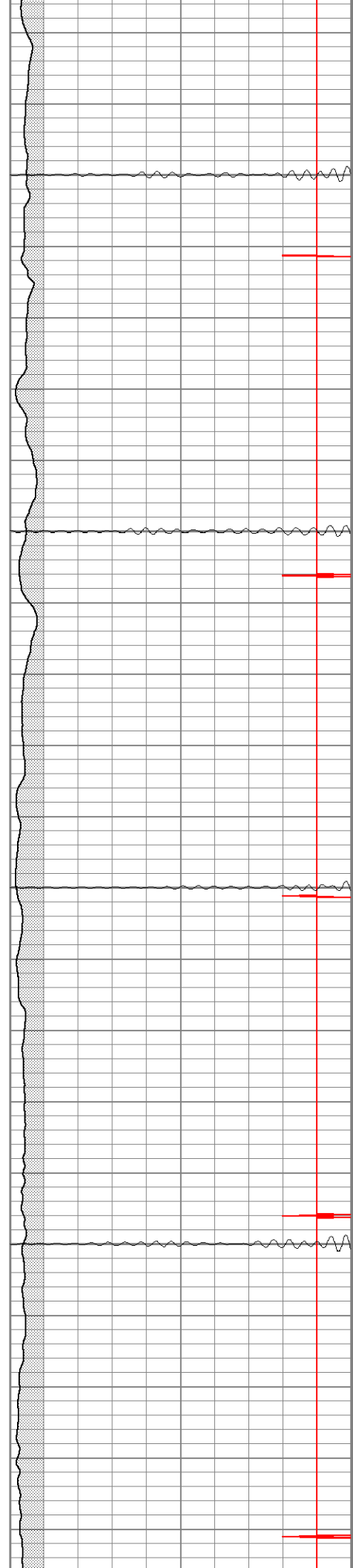


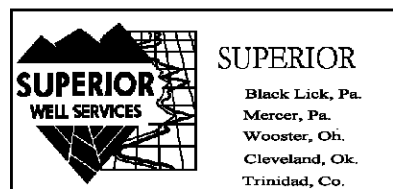
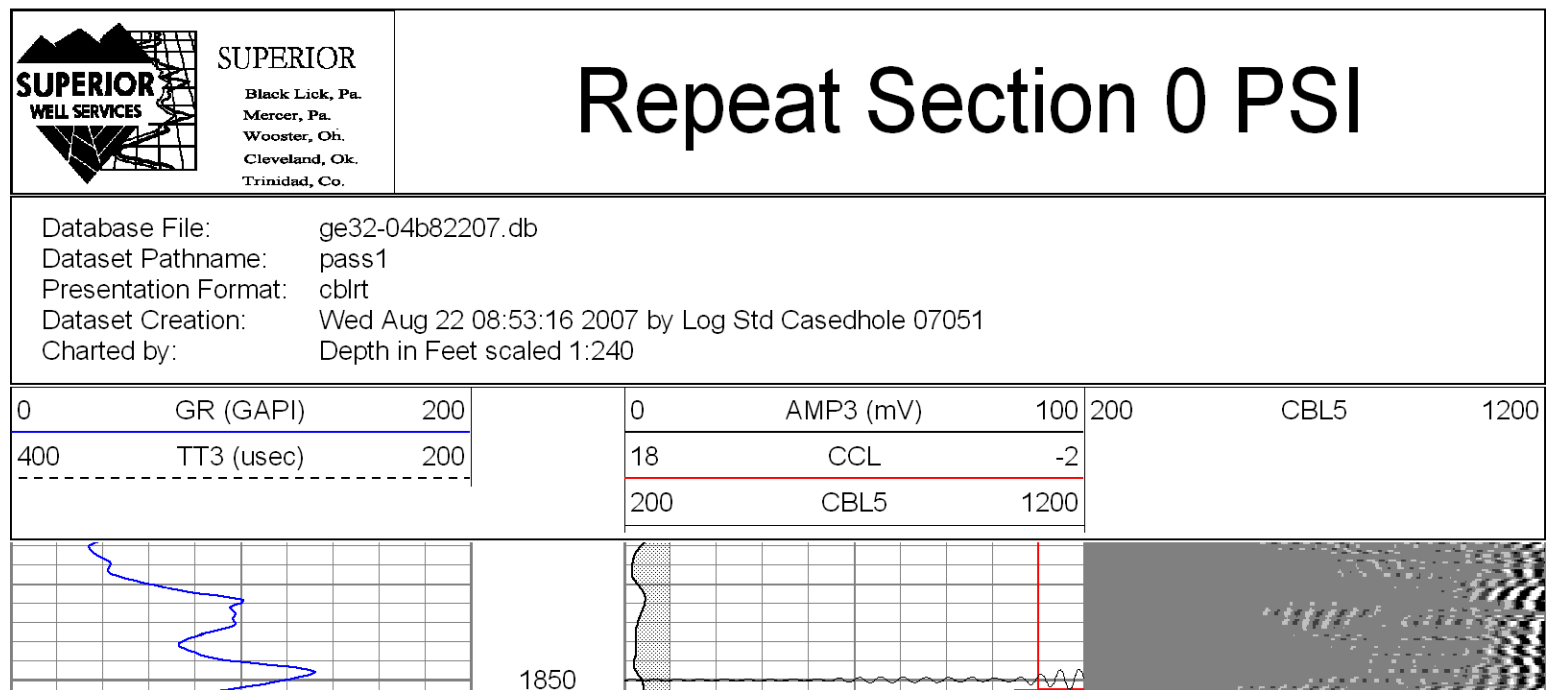
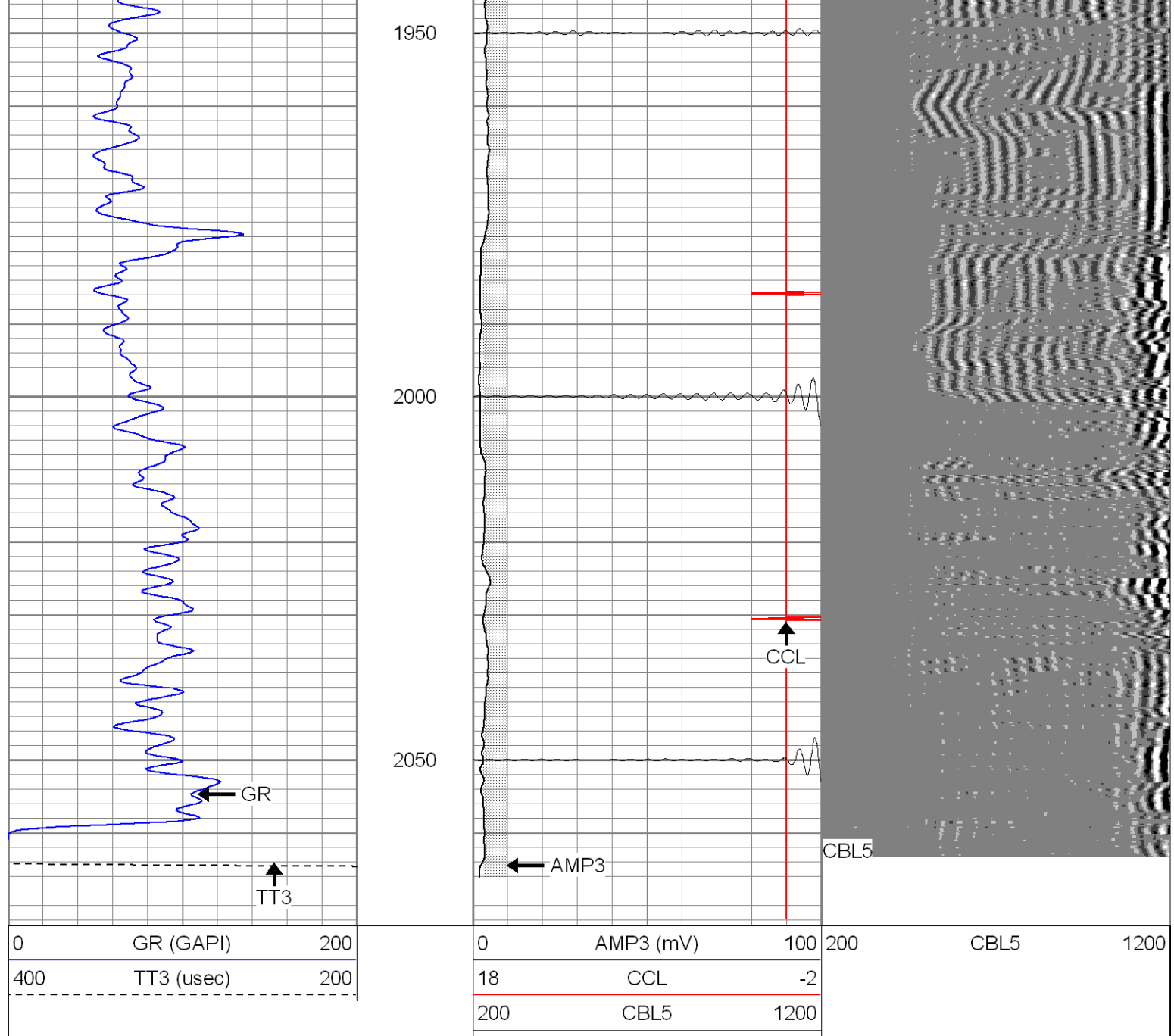
1750

1800

1850

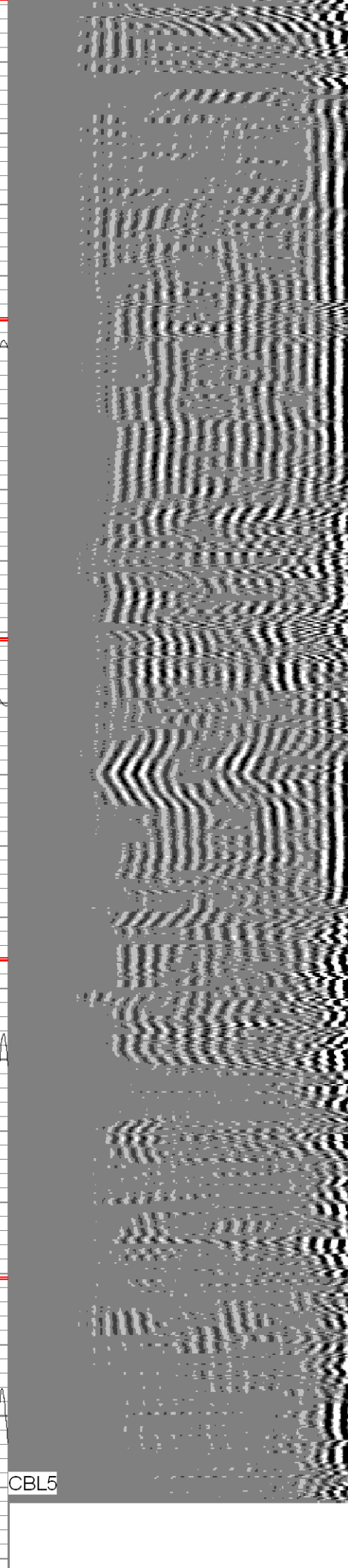
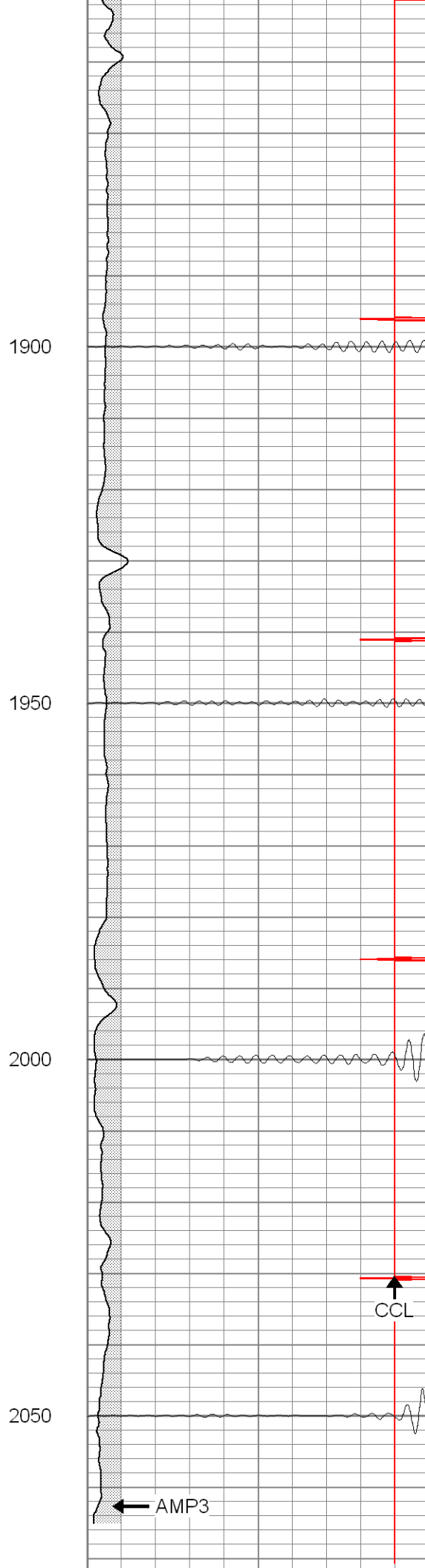
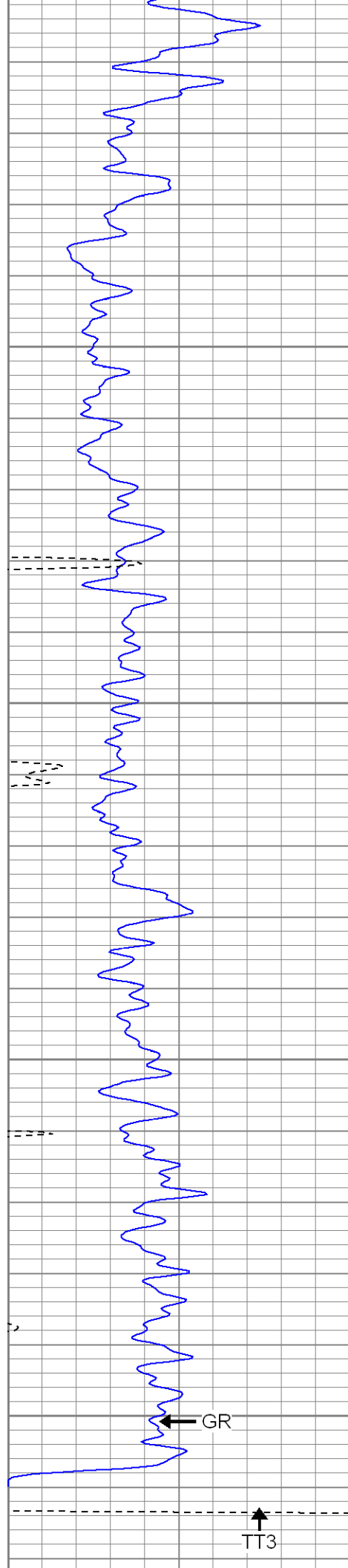
1900





Repeat Section 0 PSI

Database File: ge32-04b82207.db
 Dataset Pathname: pass1
 Presentation Format: cblrt
 Dataset Creation: Wed Aug 22 08:53:16 2007 by Log Std Casedhole 07051
 Charted by: Depth in Feet scaled 1:240



0	GR (GAPI)	200	0	AMP3 (mV)	100	200	CBL5	1200
400	TT3 (usec)	200	18	CCL	-2			
			200	CBL5	1200			

Calibration Report

Database File: ge32-04b82207.db
Dataset Pathname: pass1
Dataset Creation: Wed Aug 22 08:53:16 2007 by Log Std Casedhole 07051

Cement Bond Log Calibration Report

Serial Number: Titan2
Tool Model: T2
Performed: Tue Aug 21 10:42:43 2007

Depth: 0 ft
Casing Diameter: 0 in

3' Spacing 5' Spacing

Signal Zero: 0 0 mV
Calibrated Amplitude: 85 85 mV
Reading at Signal Zero: -0.04 0 V
Reading in Free Pipe: 1.75 1.45 V

Gain: 47.486 58.6207
Offset: 1.89944 0

Gamma Ray Calibration Report

Serial Number: TITAN2
Tool Model: T2
Performed: Tue Aug 21 10:56:28 2007

Calibrator Value: 1.0 GAPI

Background Reading: 0.0 cps
Calibrator Reading: 1.0 cps

Sensitivity: 1.6000 GAPI/cps