



SUPERIOR
Black Lick, Pa.
Mercer, Pa.
Wooster, Oh.
Cleveland, Ok.
Trinidad, Co.

SINGLE INDUCTION

Company	Pioneer Natural Resources	Company	Pioneer Natural Resources
Well	Iceman 33-19 Deep	Well	Iceman 33-19 Deep
Field	Purgatoire River	Field	Purgatoire River
County	Las Animas	County	Las Animas
State	Colorado	State	Colorado
Location:	API # : 05 071 09219 00 2096' FSL & 2071' FEL	Other Services	cdl
Permanent Datum	SEC 19 TWP 32S RGE 67W	Elevation	
Log Measured From	Ground Level	K.B. 8035'	
Drilling Measured From	Kelly Bushing 11' Above G.L.	D.F. -----	
	Kelly Bushing	G.L. 8024'	
Date	5-3-07		
Run Number	One		
Depth Driller	3200'		
Depth Logger	3187'		
Bottom Logged Interval	3185'		
Top Log Interval	Surface Casing		
Casing Driller	11.75" @ 615'		
Casing Logger	617'		
Bit Size	11.625"		
Type Fluid in Hole	Water		
Density / Viscosity	///		
pH / Fluid Loss	///		
Source of Sample	///		
Rm @ Meas. Temp	///		
Rmf @ Meas. Temp	///		
Rmc @ Meas. Temp	///		
Source of Rmf / Rmc	///		
Rm @ BHT	///		
Time Circulation Stopped	5:00 A.M.		
Time Logger on Bottom	10:45 A.M.		
Maximum Recorded Temperature	131 Deg F		
Equipment Number	T701		
Location	Trinidad		
Recorded By	Jennifer Allen		
Witnessed By	Wes Fuglevand		

>>> Fold Here >>>

All interpretations are opinions based on inferences from electrical or other measurements and we cannot and do not guarantee the accuracy or correctness of any interpretation, and we shall not, except in the case of gross or willful negligence on our part, be liable or responsible for any loss, costs, damages, or expenses incurred or sustained by anyone resulting from any interpretation made by any of our officers, agents or employees. These interpretations are also subject to our general terms and conditions set out in our current Price Schedule.

Comments

Well Directions:
Wet Canyon 6 miles, turn left into San Pablo Canyon cross gate, stay right at Dude Canyon road, go up steep hill. At the top of the hill turn left, continue to location.



SUPERIOR

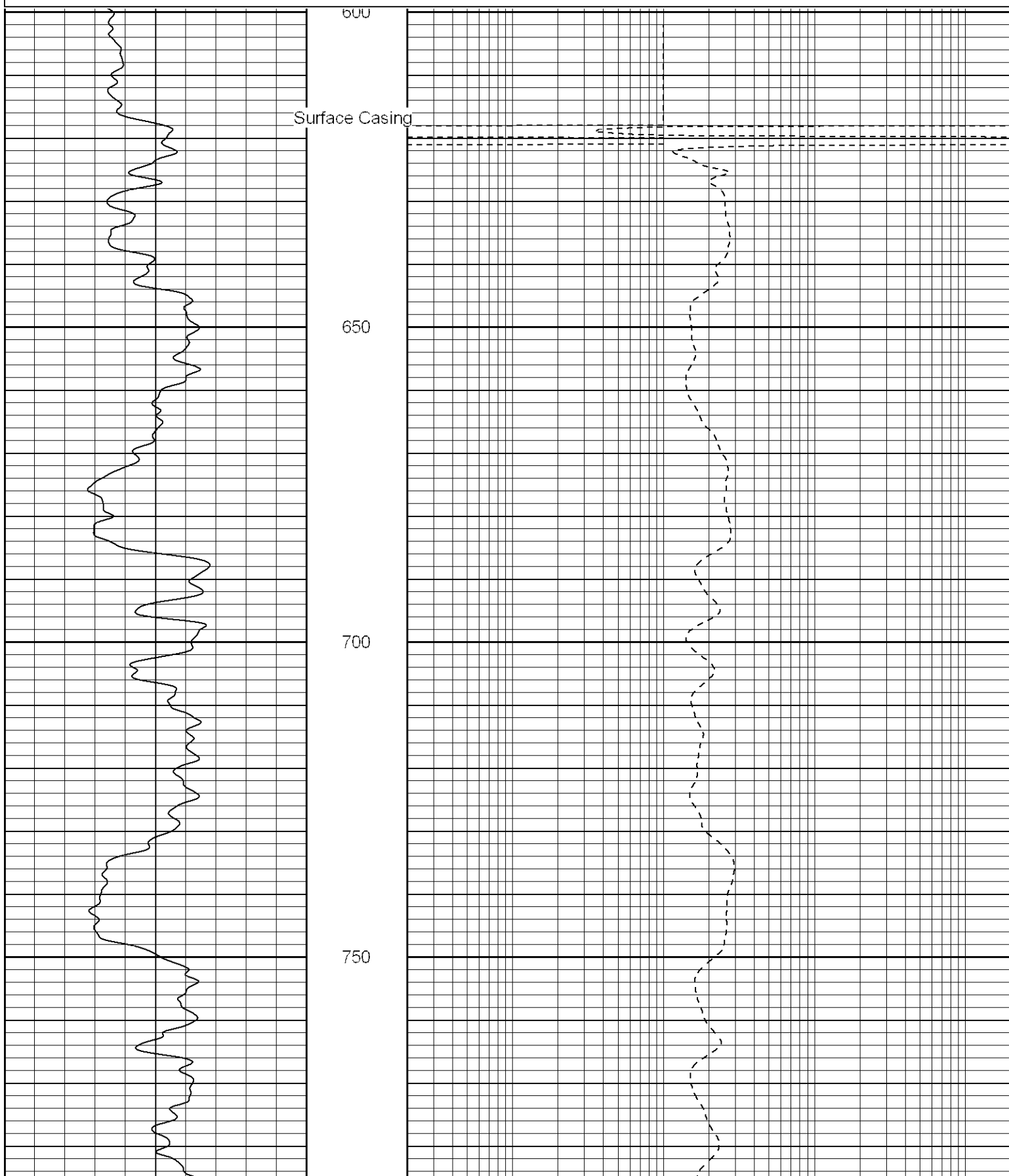
Black Lick, Pa.
Mercer, Pa.
Wooster, Oh.
Cleveland, Ok.
Trinidad, Co.

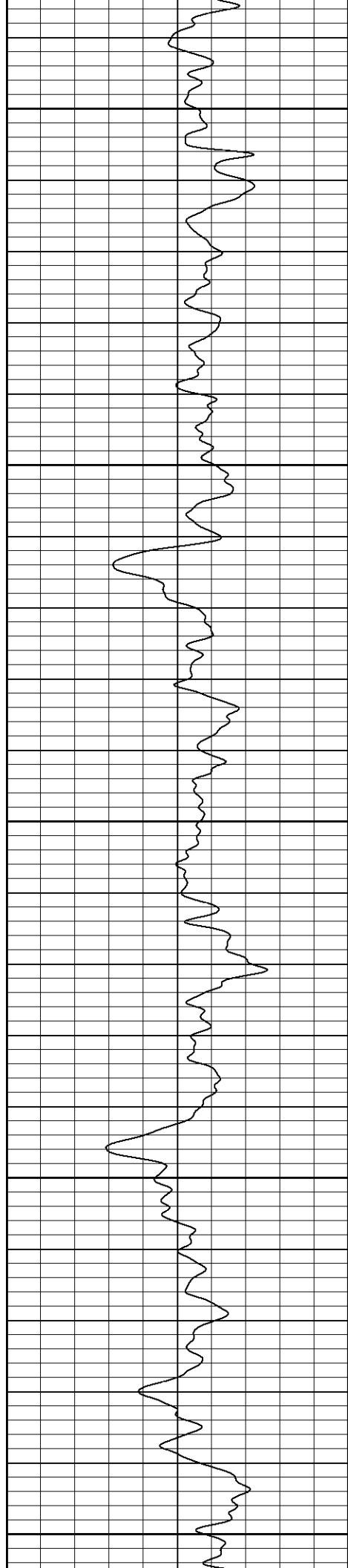
Main Pass

Database File: icemand.db
Dataset Pathname: pass2.1
Presentation Format: iel
Dataset Creation: Thu May 03 12:26:09 2007 by Calc Open-Cased 061129
Charted by: Depth in Feet scaled 1:240

0	GR (GAPI)	200
-200	SP (mV)	0

0.2	DIR (Ohm-m)	2000
0.2	SN (Ohm-m)	2000





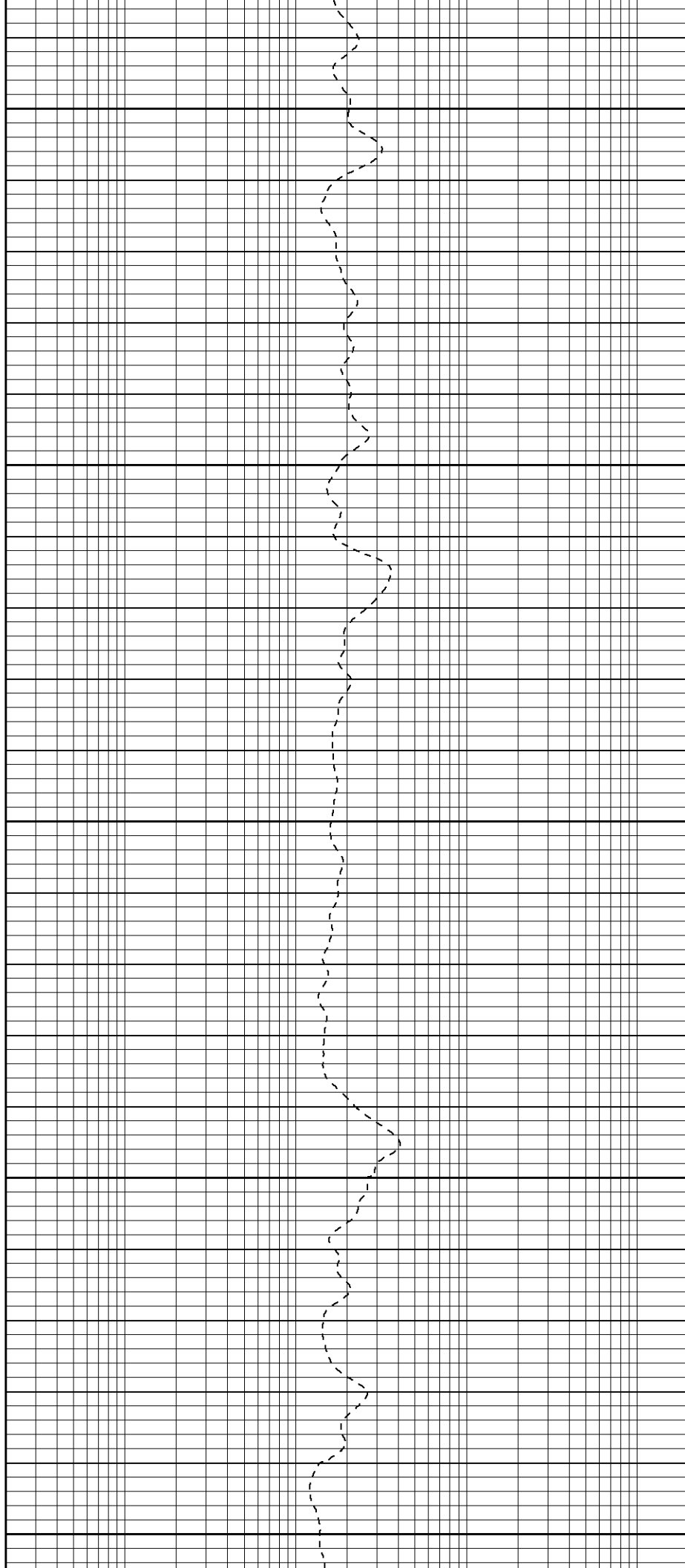
800

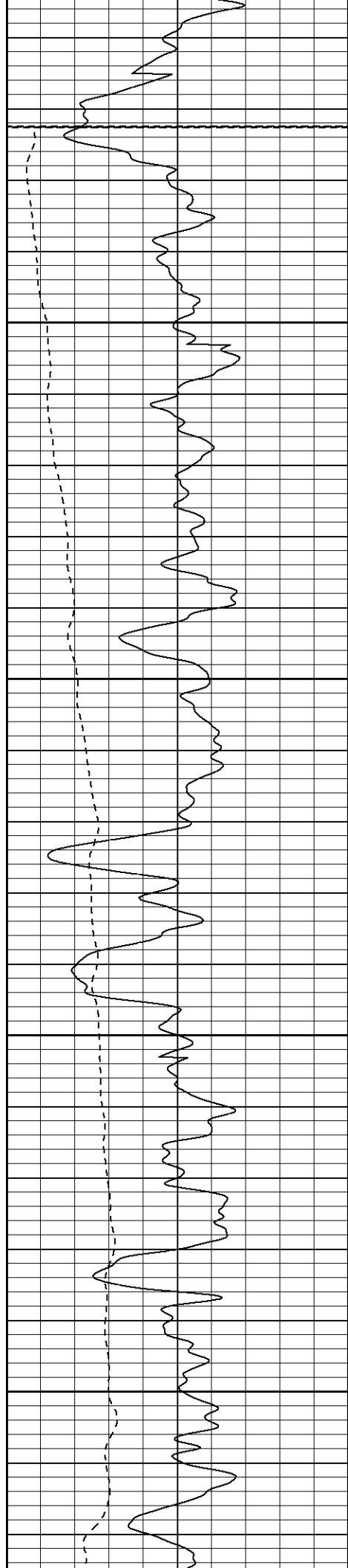
850

900

950

1000





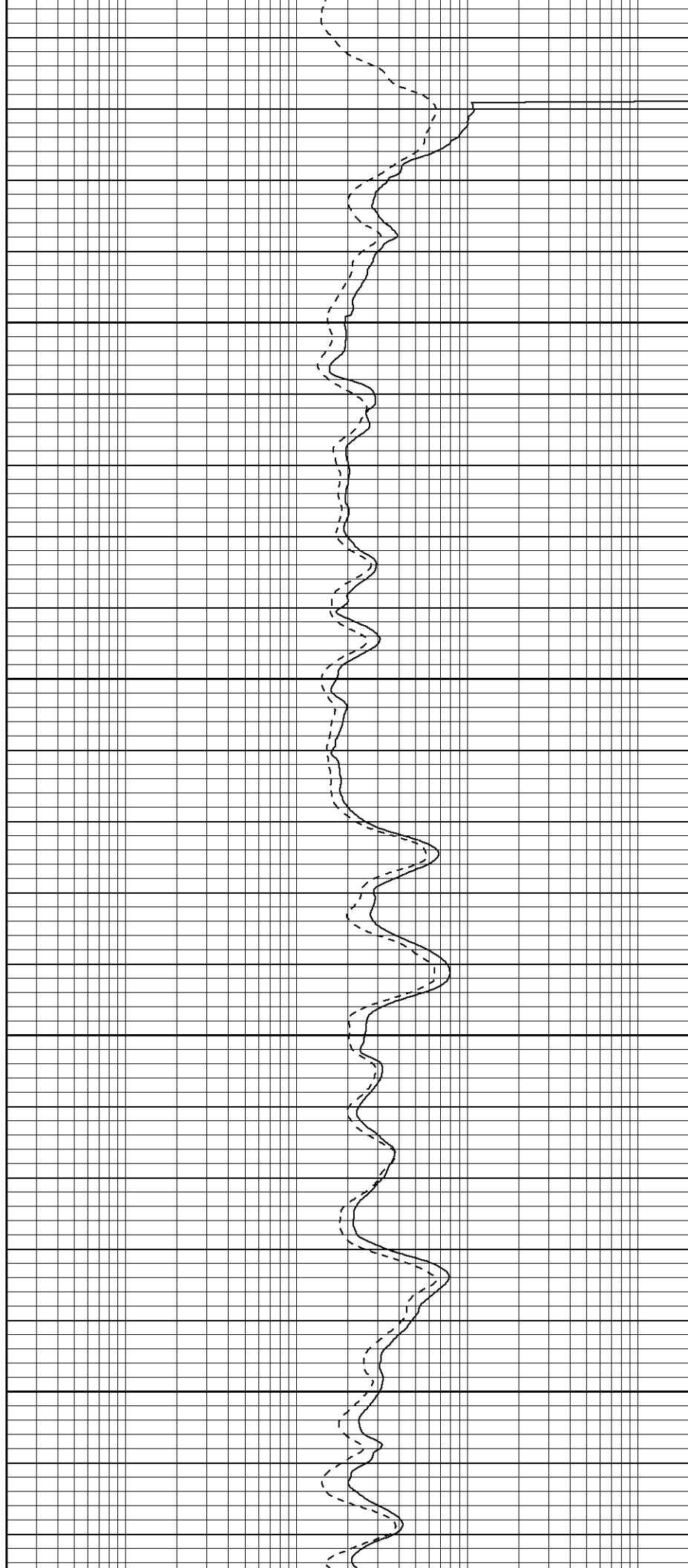
Fluid Level

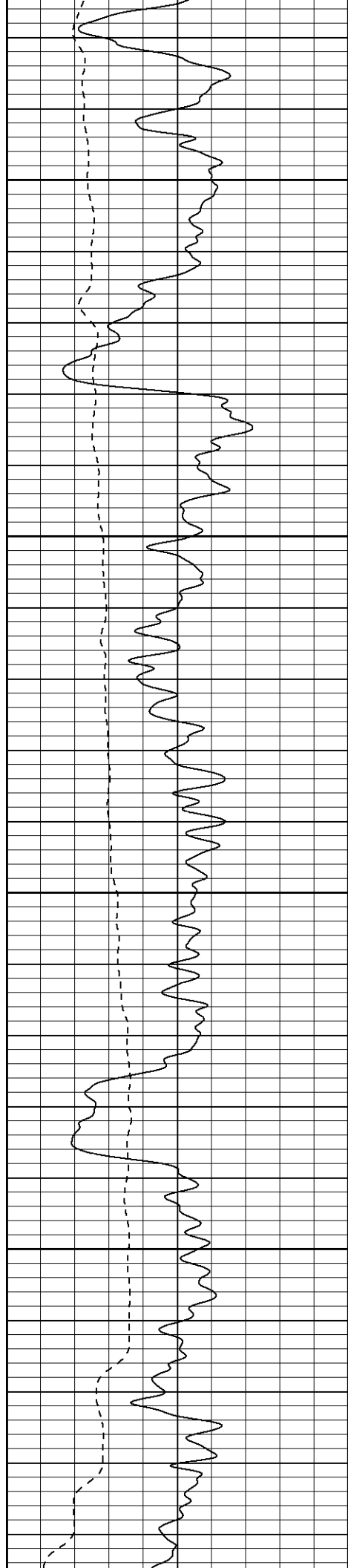
1050

1100

1150

1200



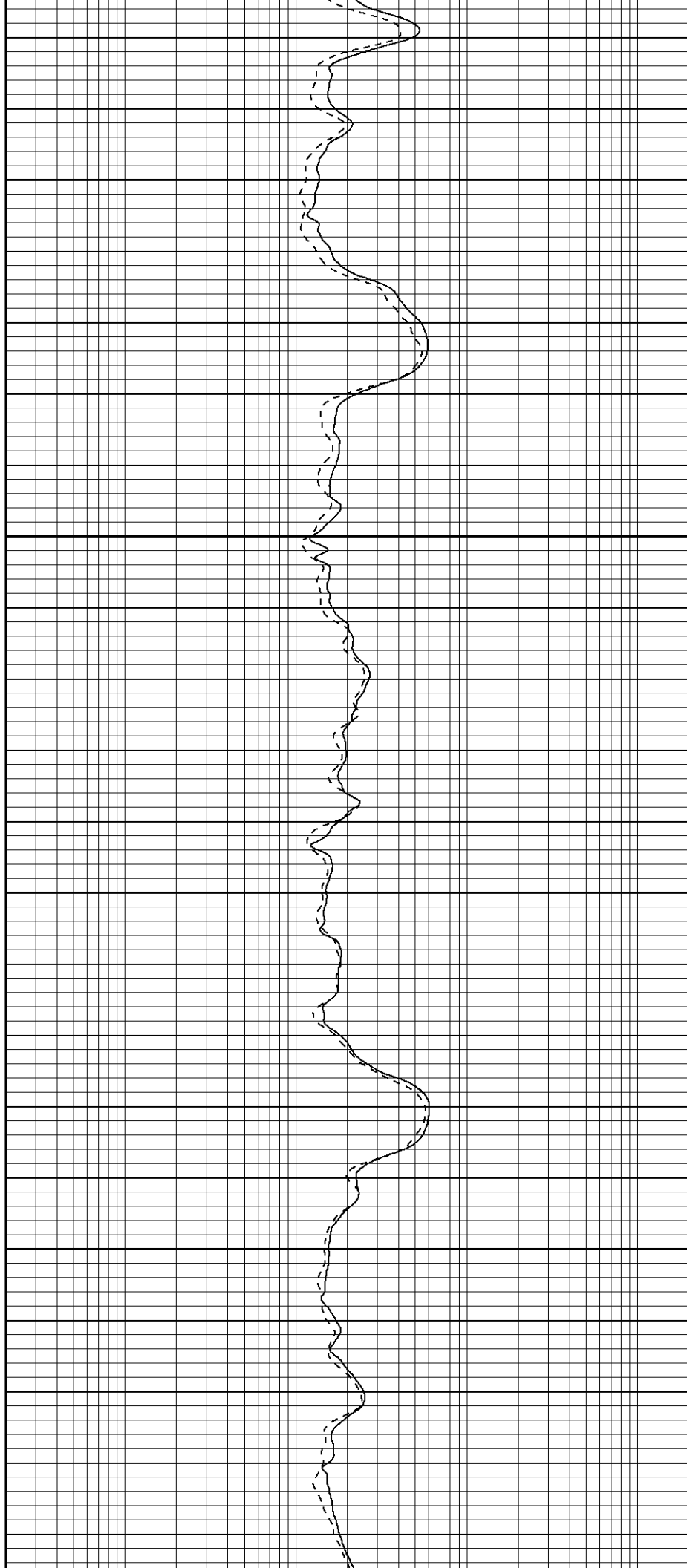


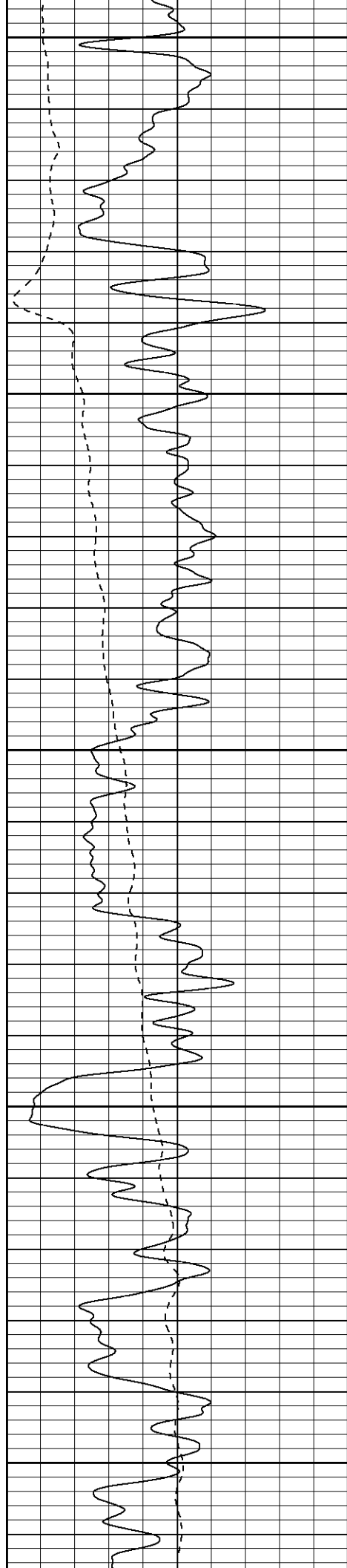
1250

1300

1350

1400





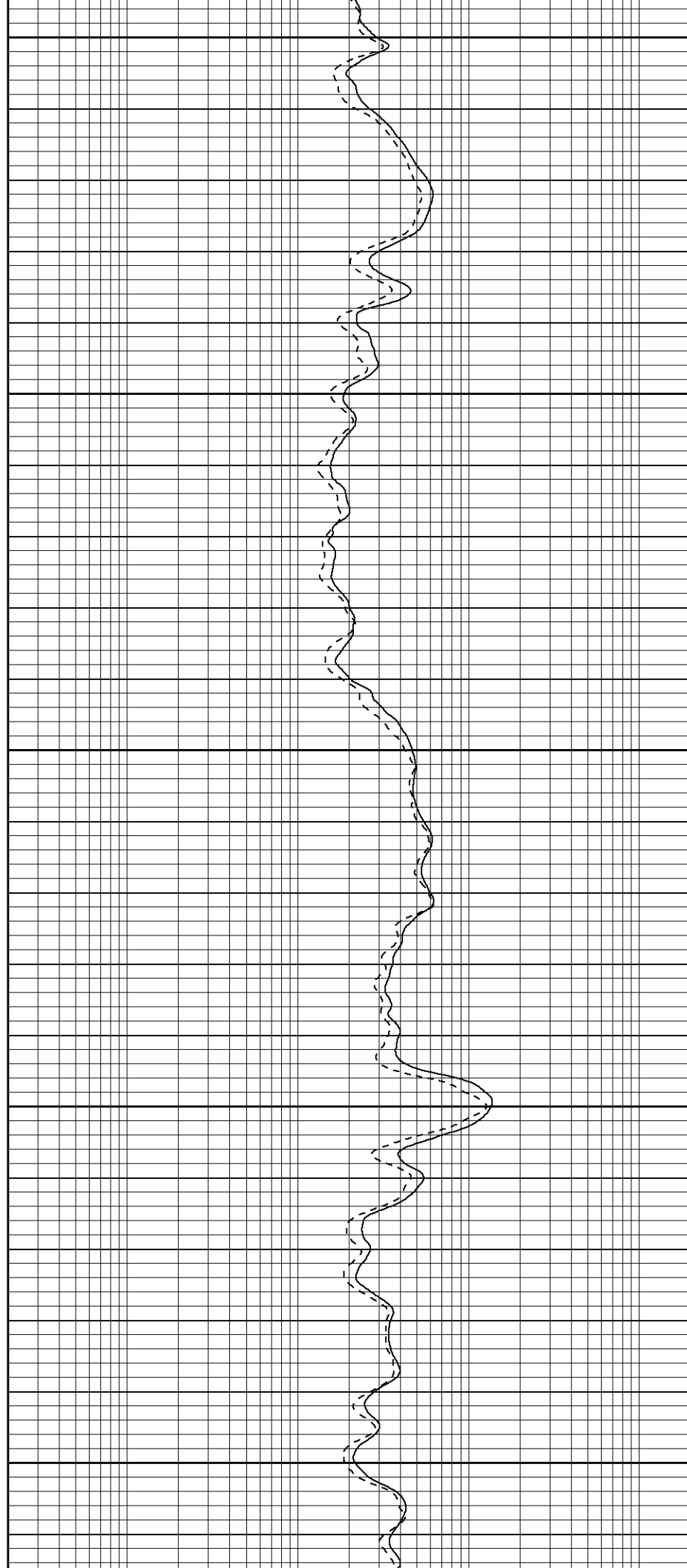
1450

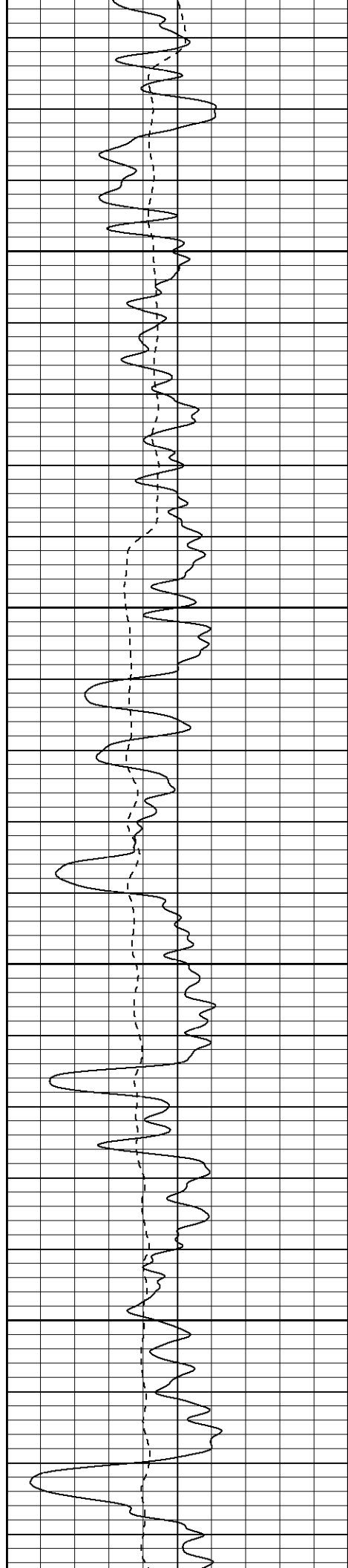
1500

1550

1600

1650



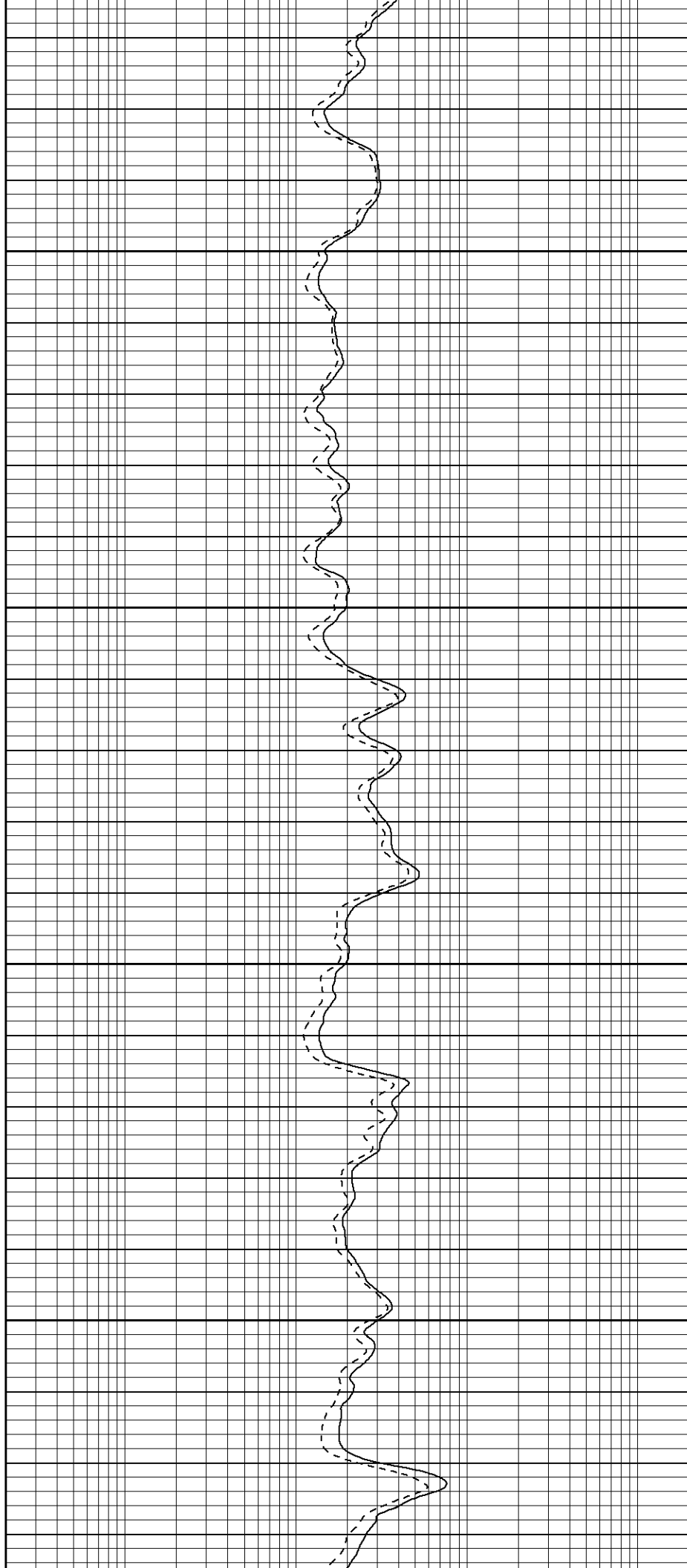


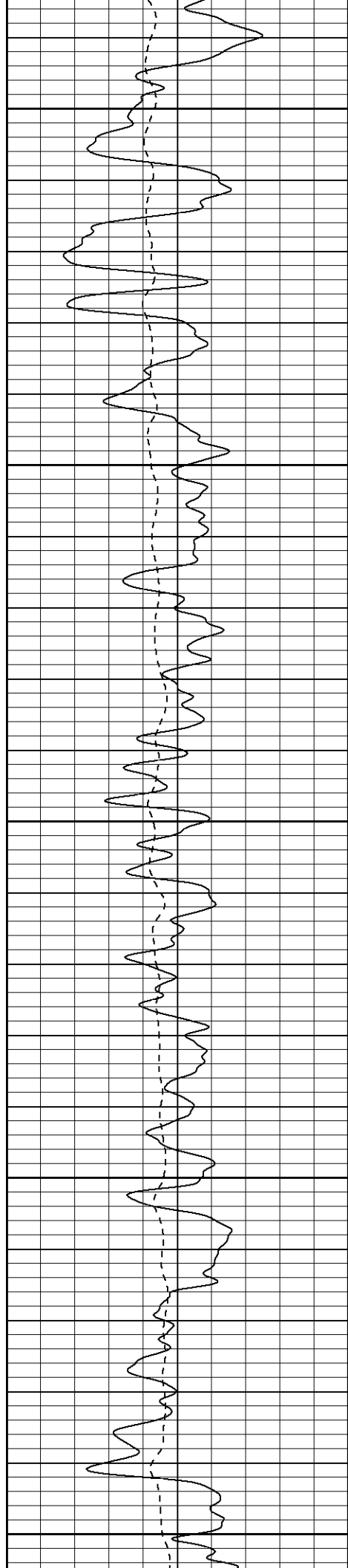
1700

1750

1800

1850





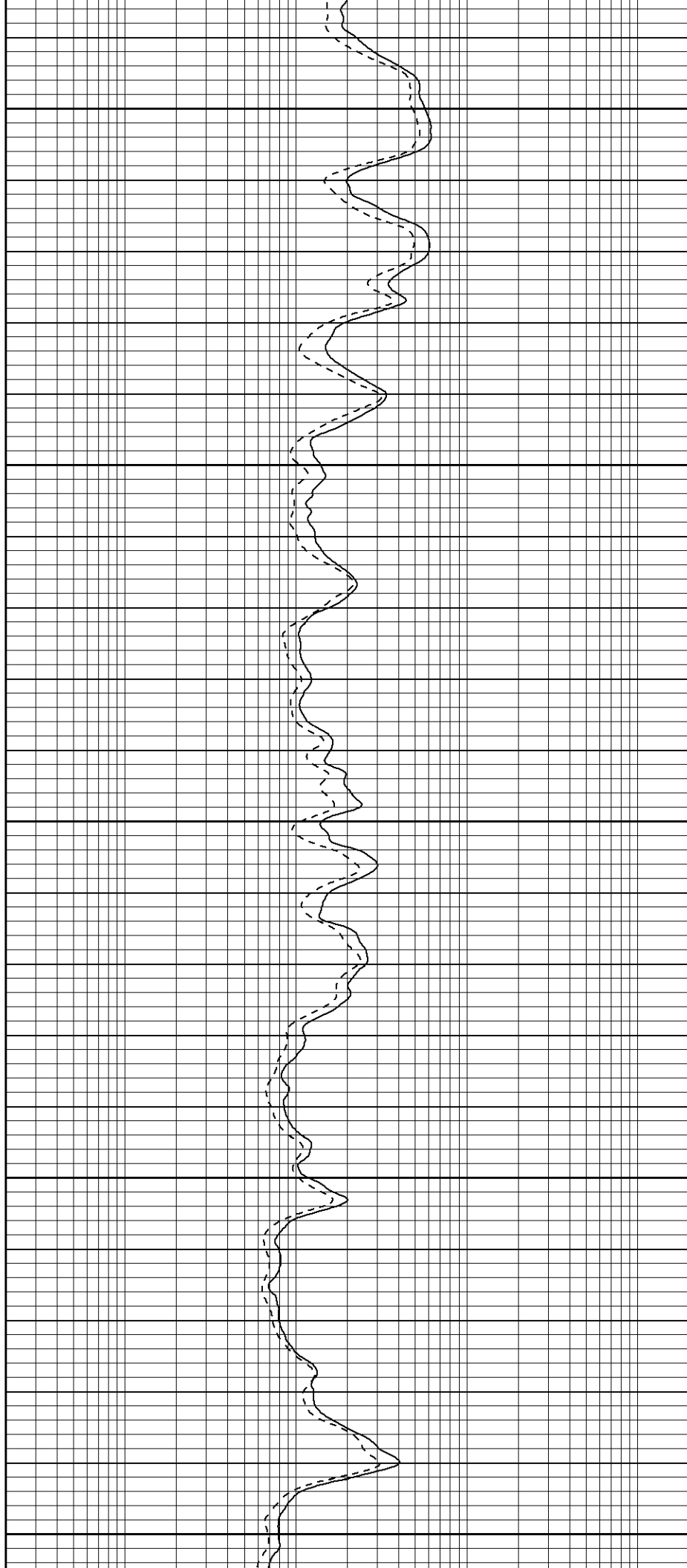
1900

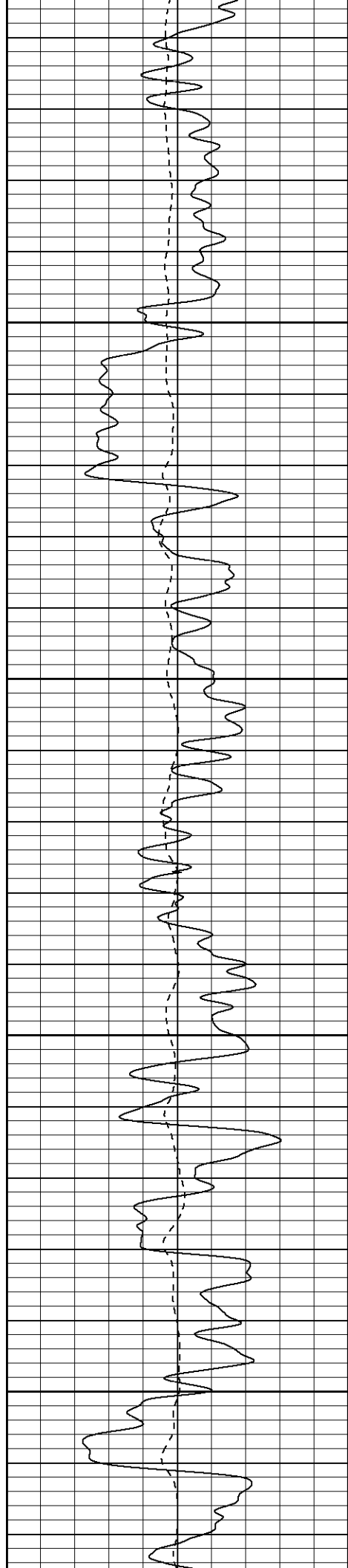
1950

2000

2050

2100



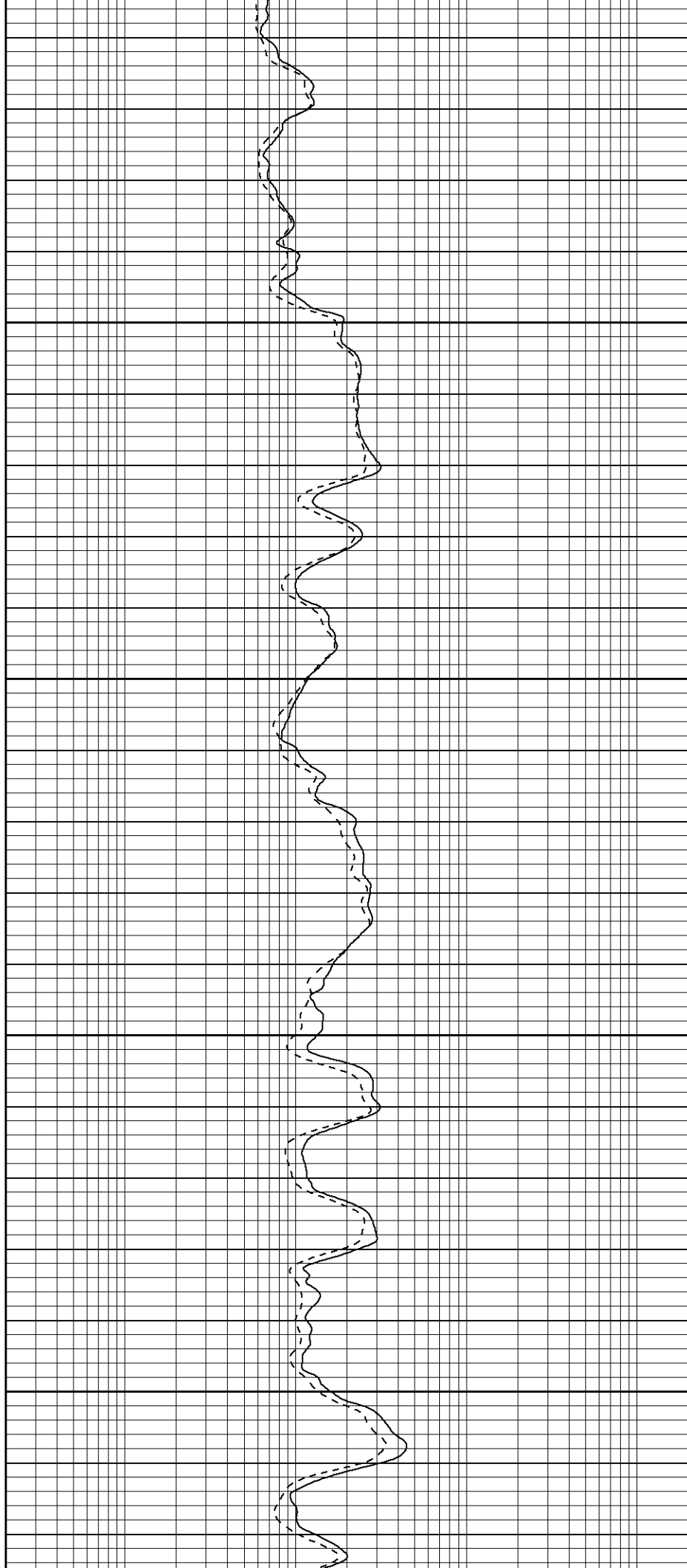


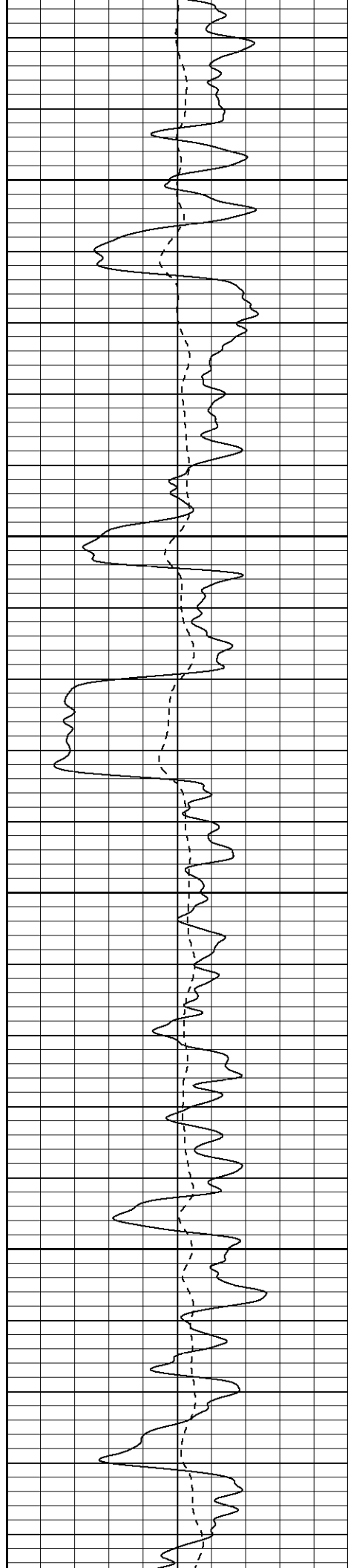
2150

2200

2250

2300



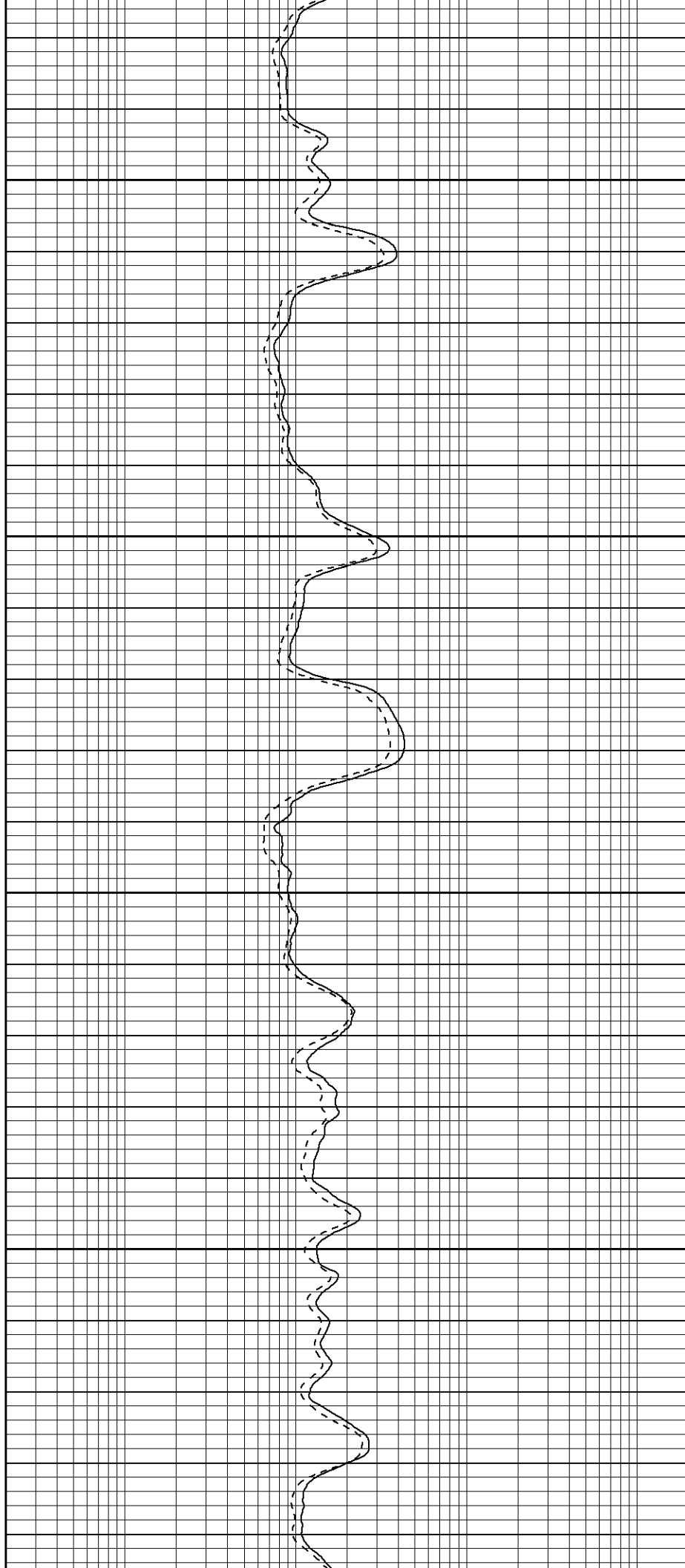


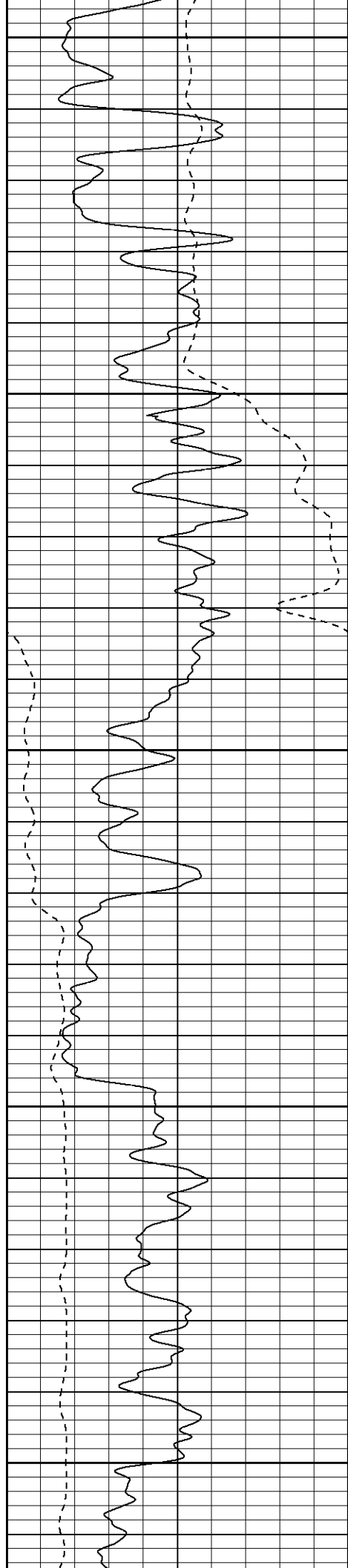
2350

2400

2450

2500





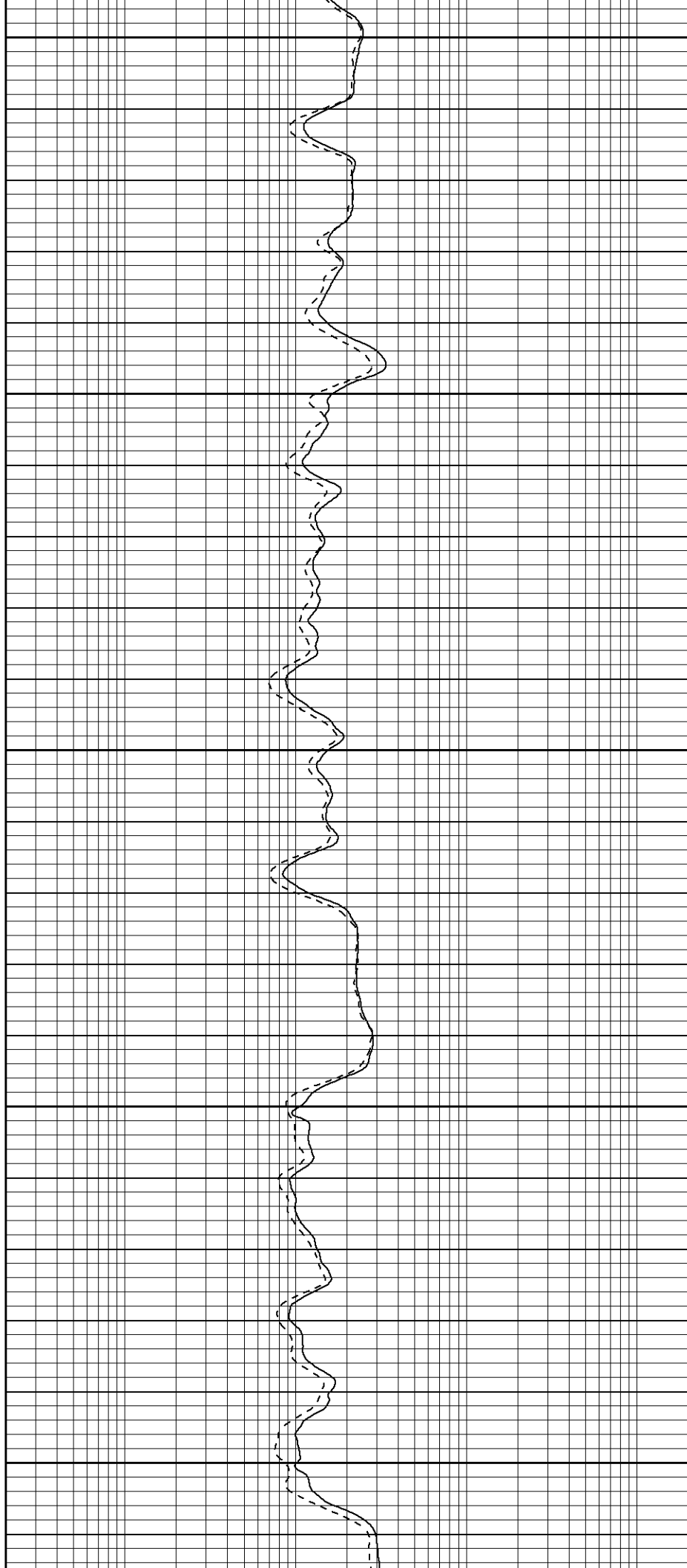
2550

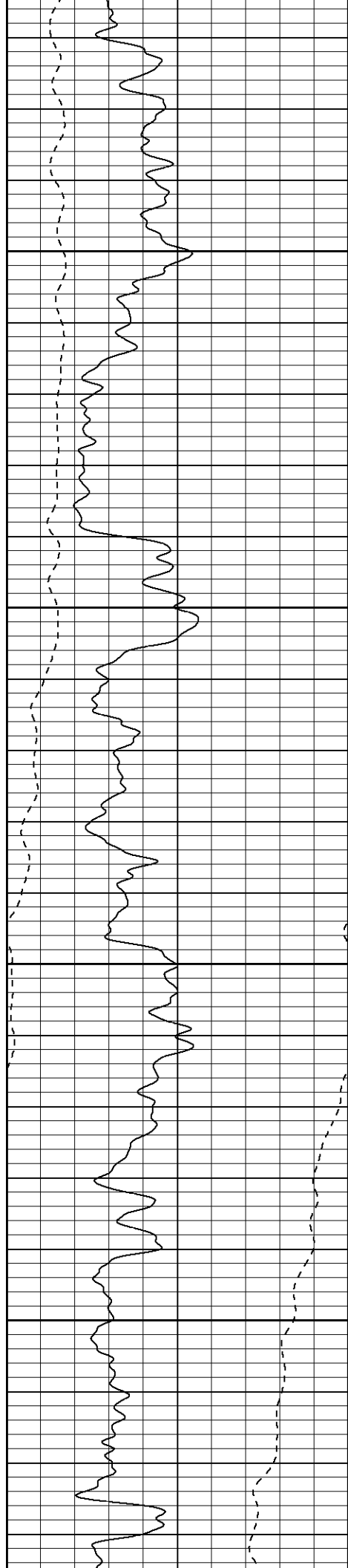
2600

2650

2700

2750



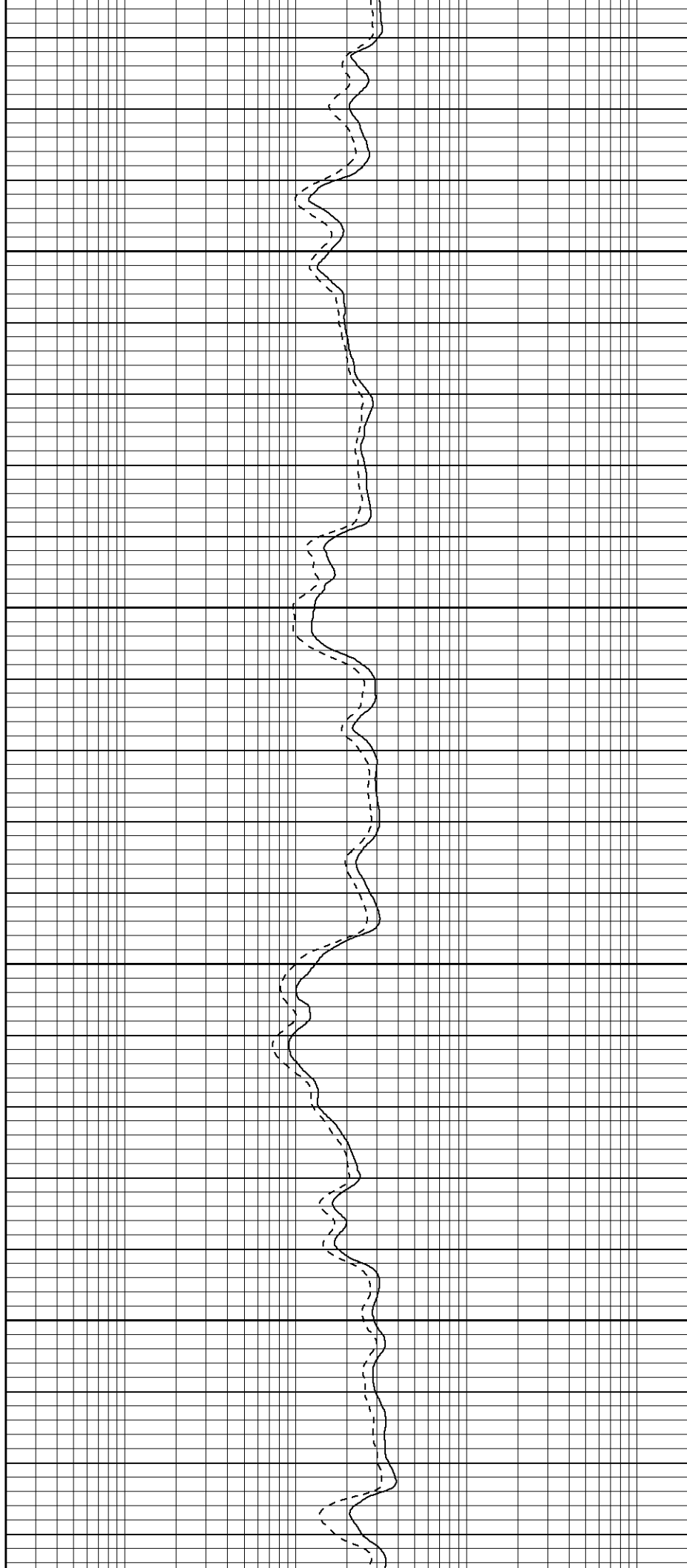


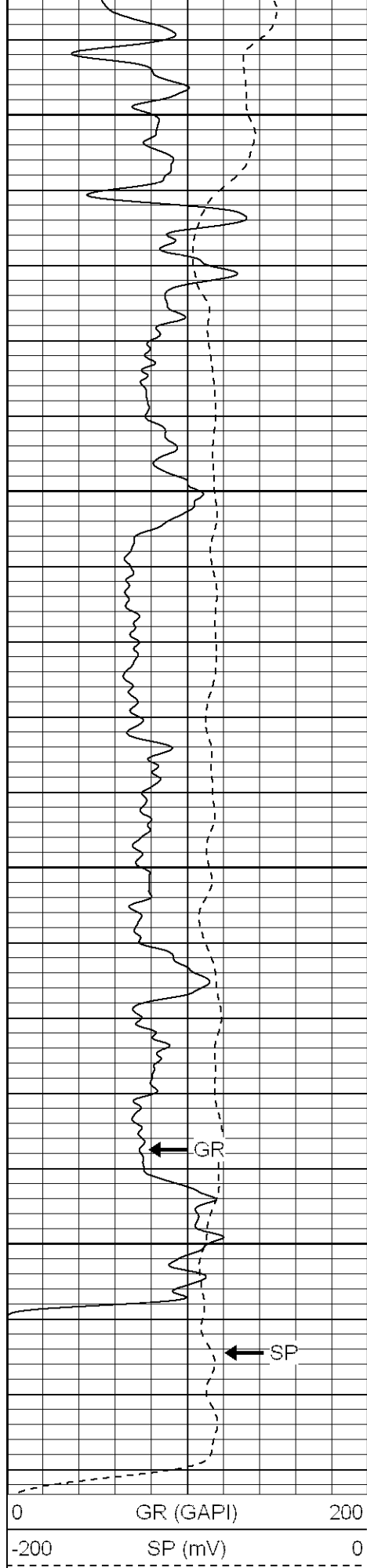
2800

2850

2900

2950



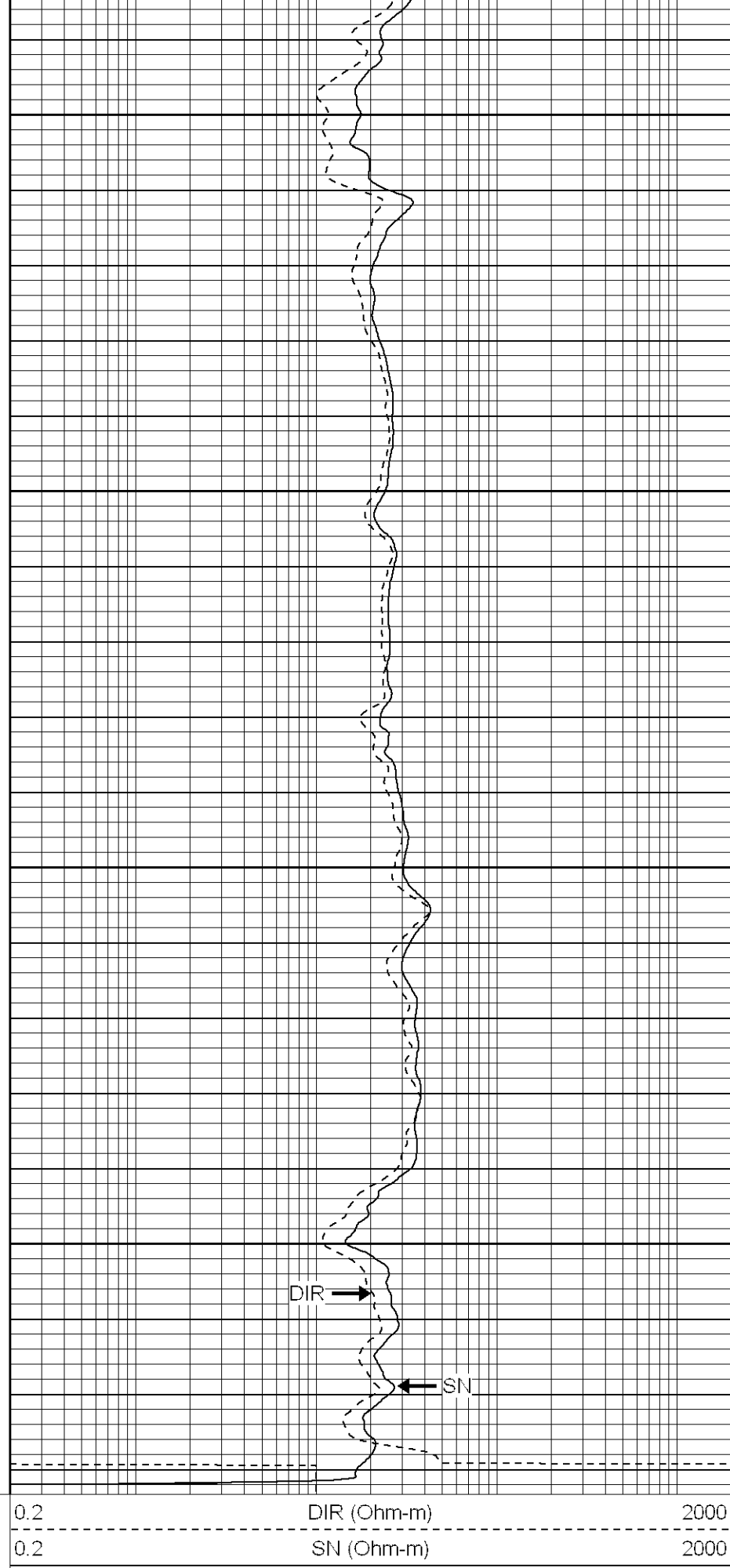


3000

3050

3100

3150





SUPERIOR

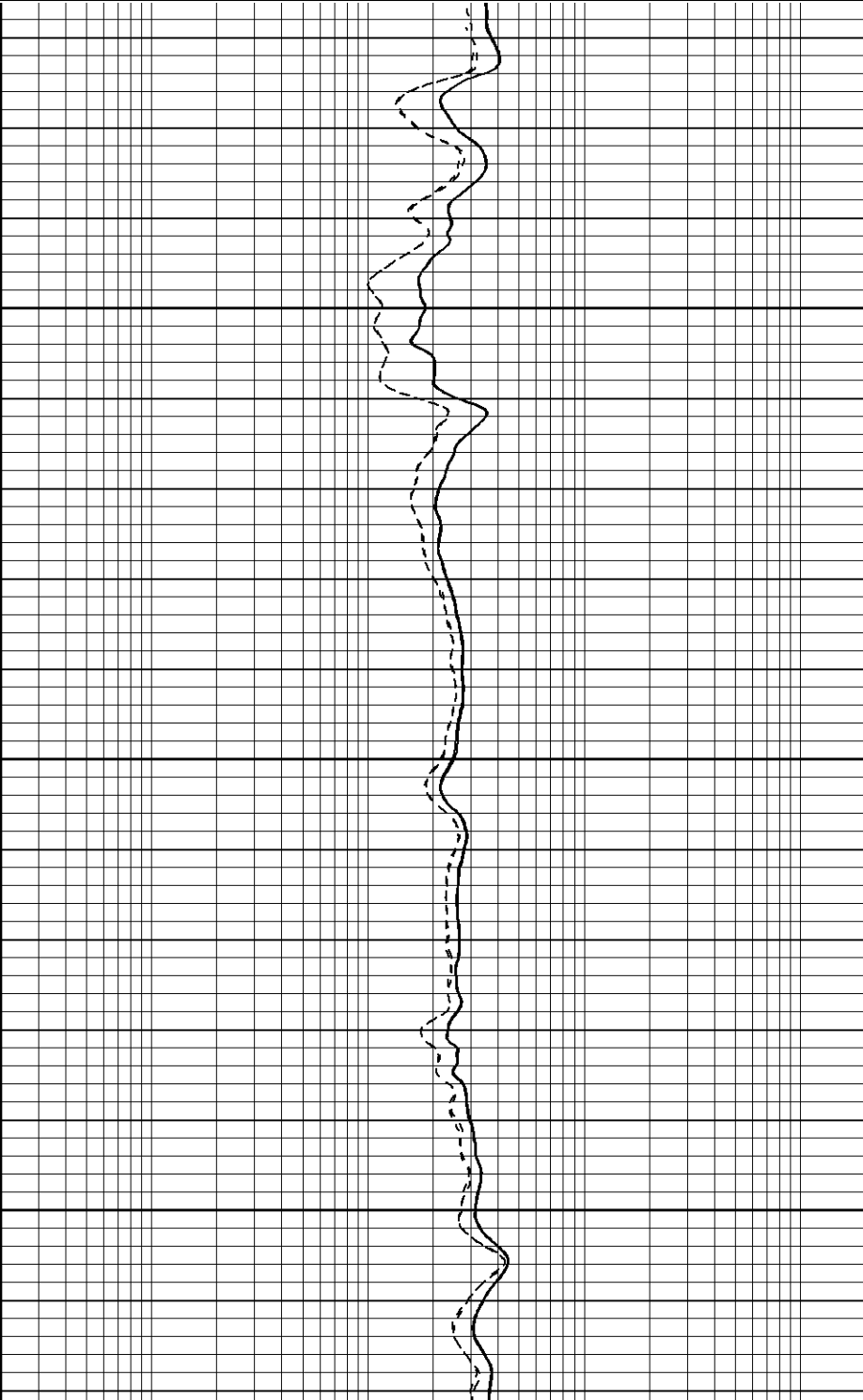
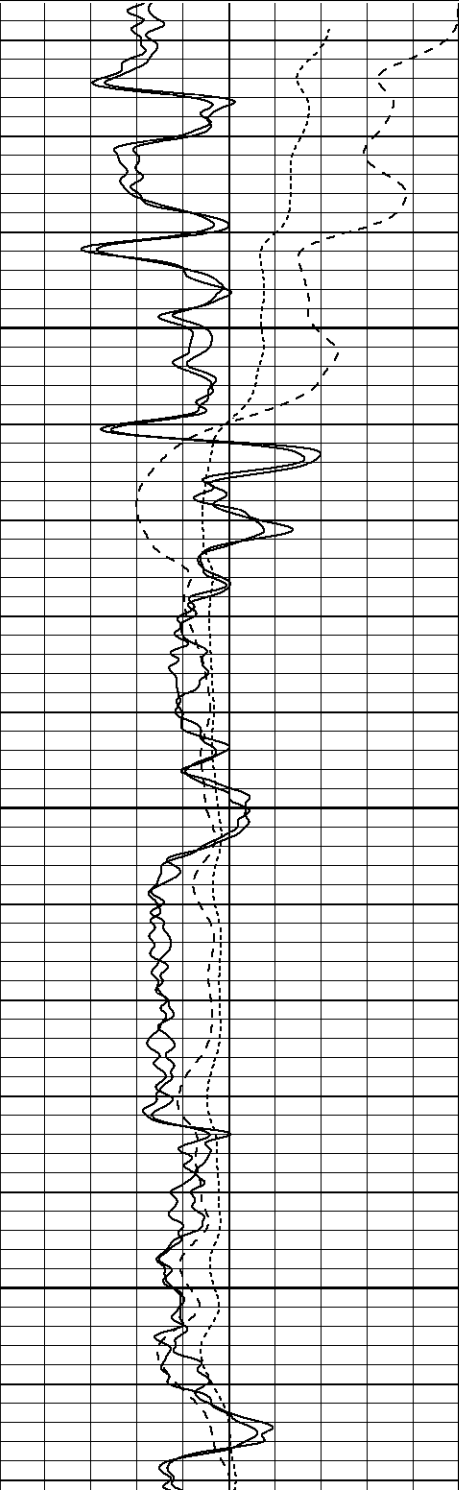
Black Lick, Pa.
Mercer, Pa.
Wooster, Oh.
Cleveland, Ok.
Trinidad, Co.

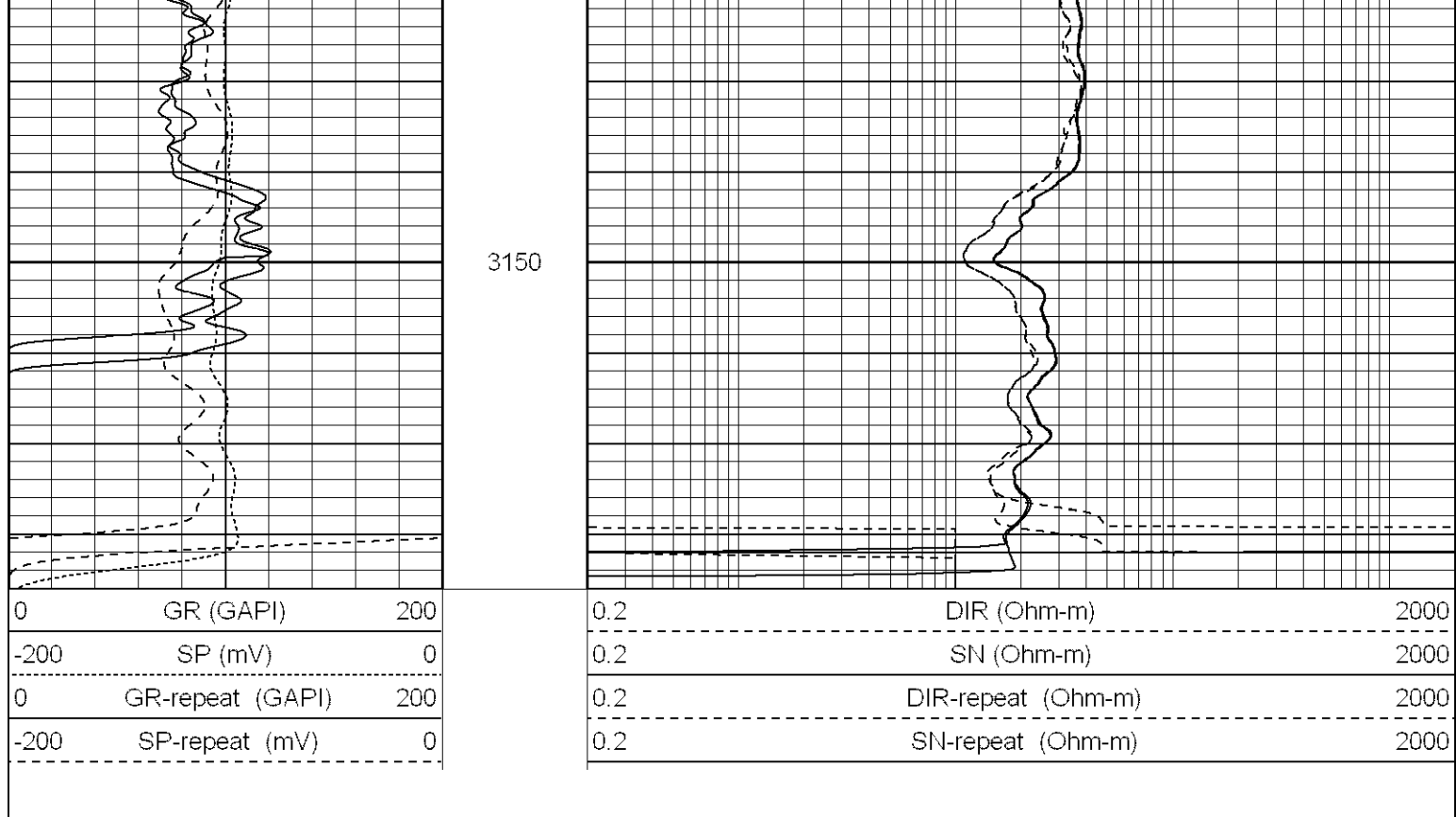
Repeat Section

Database File: icemand.db
Dataset Pathname: pass1.2
Presentation Format: iel
Dataset Creation: Thu May 03 12:19:39 2007 by Calc Open-Cased 061129
Charted by: Depth in Feet scaled 1:240

0	GR (GAPI)	200
-200	SP (mV)	0
0	GR-repeat (GAPI)	200
-200	SP-repeat (mV)	0

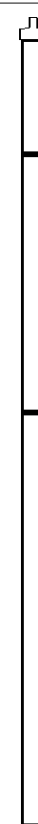
0.2	DIR (Ohm-m)	2000
0.2	SN (Ohm-m)	2000
0.2	DIR-repeat (Ohm-m)	2000
0.2	SN-repeat (Ohm-m)	2000





Calibration Report				
Database File:	icemand.db			
Dataset Pathname:	pass1			
Dataset Creation:	Thu May 03 10:42:32 2007 by Log Open-Cased 061129			
Induction Tool Calibration Report				
Serial Number:	040903			
Tool Model:	Probe			
Downhole Cal Performed:	Wed May 02 07:52:54 2007			
Surface Cal Performed:	Wed May 02 07:52:38 2007			
Surface Calibration:	Air	Loop		
Conductivity Reference:	0.000	500.000	mmho	
Conductivity Reading:	0.009	0.649	V	
Internal Reference:	Zero	Cal		
Conductivity Reference:	0.000	500.000	mmho	
Conductivity Reading:	0.013	0.649	V	
Downhole Calibration:	Internal Zero	Internal Cal		
Conductivity Reference:	0.378	500.034	mmho	
Conductivity Reading:	0.335	500.259	V	
Short Normal Reference:	0.000	20.000	Ohm-m	
Short Normal Reading:	0.006	0.234	V	
Results:	Gain	Offset		
Loop Conductivity:	781.229	-7.031		
Downhole Correction:	0.999	0.043		
Short Normal Resistivity:	69.000	-0.483		
Compensated Density Calibration Report				
Serial-Model:	902-2.75POH			
Source / Verifier:	/			
Master Calibration Performed:	Mon Apr 30 07:53:44 2007			
Master Calibration				

Gamma Ray Calibration Report		
Serial Number:	804	
Tool Model:	2.75POH	
Performed:	Fri Apr 20 04:47:26 2007	
Calibrator Value:	1.0	GAPI
Background Reading:	0.0	cps
Calibrator Reading:	1.0	cps
Sensitivity:	0.6100	GAPI/cps

Sensor	Offset (ft)	Schematic	Description	Len (ft)	OD (in)	Wt (lb)	
GR	24.84		None	0.75	1.50	5.00	
			GR-2.75POH (804) Probe	3.73	2.75	43.00	
LSD	16.21		CDL-2.75POH (902) Probe	8.43	2.75	106.00	
DCAL	15.94						
SSD	15.69						
DIC	6.24		IEL-Probe (040903)	13.46	2.75	93.00	
SP	2.25						
SN	1.71						
		Dataset: icemand.db: field/well/run1/pass1					
		Total Length: 26.37 ft					
		Total Weight: 247.00 lb					
		O.D. 2.75 in					