



**SUPERIOR**  
Black Lick, Pa.  
Mercer, Pa.  
Wooster, Oh.  
Cleveland, Ok.  
Trinidad, Co.

## CEMENT BOND GAMMA RAY 1000 PSI

Company XTO Energy Inc.  
Well Apache Canyon 06-04V  
Field Purgatorie River  
County Las Animas  
State CO

Company XTO Energy Inc.  
Well Apache Canyon 06-04V  
Field Purgatorie River  
County Las Animas  
State CO

Location: API # : 05 071 09124 00

374' FNL & 647' FWL

SEC 06 TWP 34S RGE 67W

Permanent Datum Ground Level Elevation 8217'  
Log Measured From Ground Level  
Drilling Measured From Ground Level

Other Services  
PRES  
CONTROL  
Elevation  
K.B. -----  
D.F. -----  
G.L. 8217'

Date				7/5/07		
Run Number				one		
Depth Driller				2675'		
Depth Logger				2593'		
Bottom Logged Interval				2589'		
Top Log Interval				Surf.		
Open Hole Size				7 7/8"		
Type Fluid				water		
Density / Viscosity				///		
Max. Recorded Temp.				///		
Estimated Cement Top				206'		
Time Well Ready				8:10		
Time Logger on Bottom				8:30		
Equipment Number				0703		
Location				Trinidad		
Recorded By				Worley		
Witnessed By				Mr. Polley		
Borehole Record				Tubing Record		
Run Number	Bit	From	To	Size	Weight	To
Casing Record	Size		Wgt/Ft	Top		Bottom
Surface String	8 5/8"			00		496'
Prot. String						
Production String	5 1/2"			00		NA
Liner						

<<< Fold Here >>>

All interpretations are opinions based on inferences from electrical or other measurements and we cannot and do not guarantee the accuracy or correctness of any interpretation, and we shall not, except in the case of gross or willful negligence on our part, be liable or responsible for any loss, costs, damages, or expenses incurred or sustained by anyone resulting from any interpretation made by any of our officers, agents or employees. These interpretations are also subject to our general terms and conditions set out in our current Price Schedule.

### Comments

First Bosque entrance just before Weston, first right at Cherry Canyon, stay left at Y, stay on main road approx. six miles, turn left to location.

CBL ran under 1000 PSI.



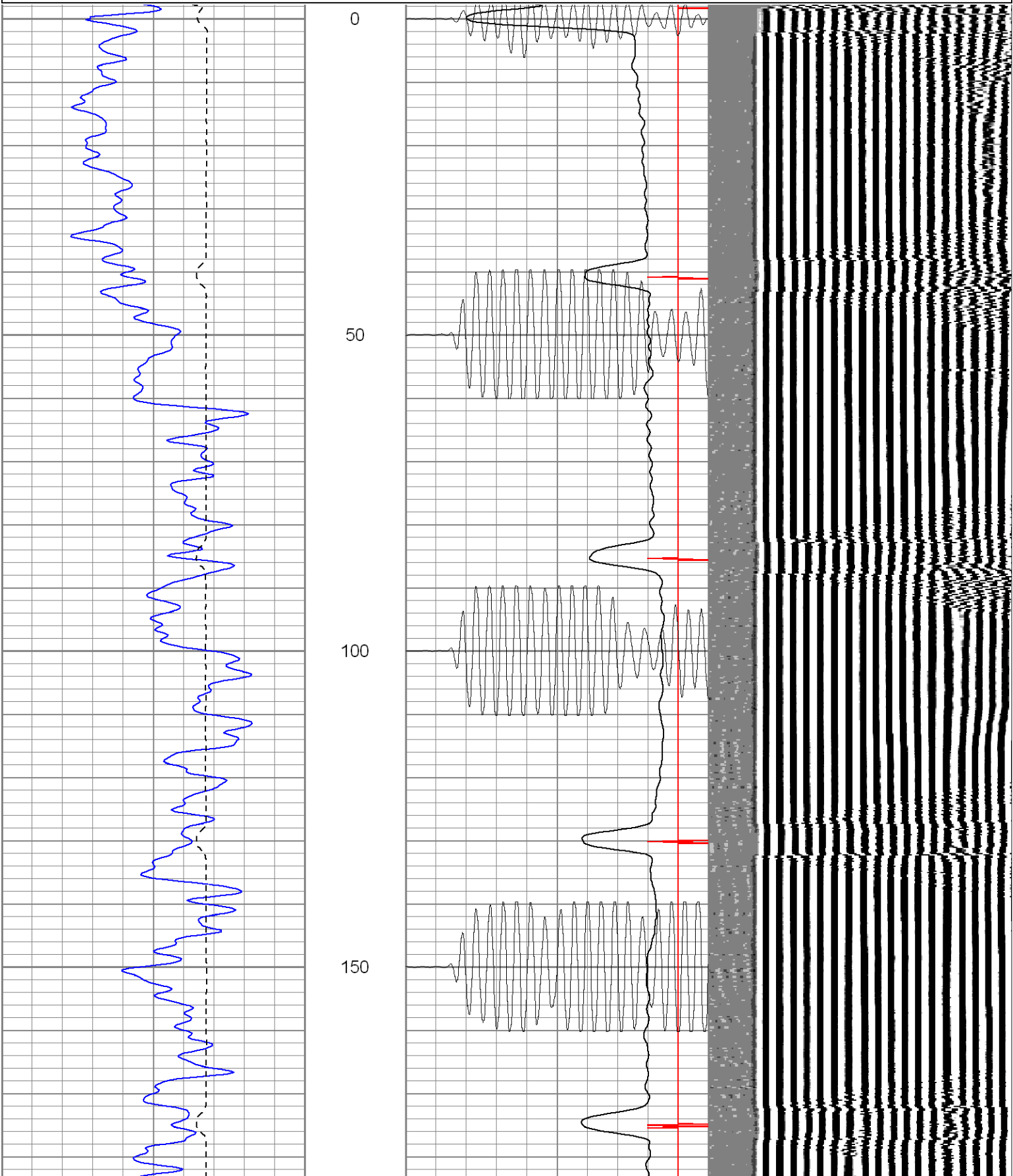
**SUPERIOR**

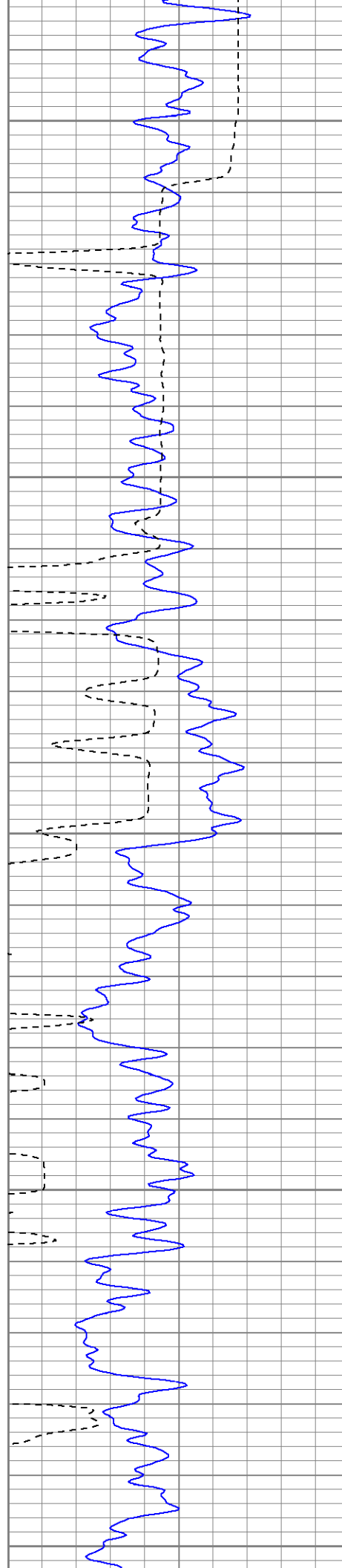
Black Lick, Pa.  
Mercer, Pa.  
Wooster, Oh.  
Cleveland, Ok.  
Trinidad, Co.

# Main Pass 1000 PSI

Database File: ac6-4v7507b.db  
Dataset Pathname: pass2.2  
Presentation Format: cblrt  
Dataset Creation: Thu Jul 05 09:48:25 2007 by Calc Std Casedhole 07051  
Charted by: Depth in Feet scaled 1:240

0	GR (GAPI)	200	0	AMP3 (mV)	100	200	CBL5	1200
400	TT3 (usec)	200	18	CCL	-2			
			200	CBL5	1200			





200

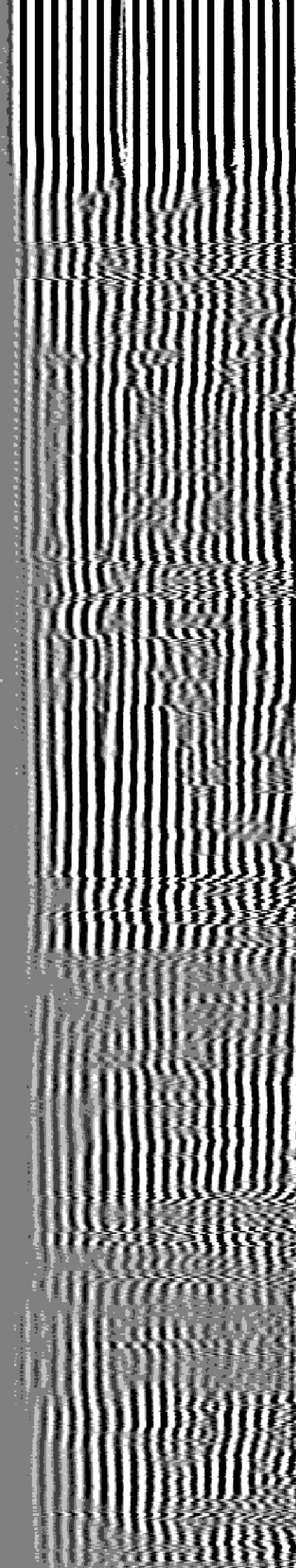
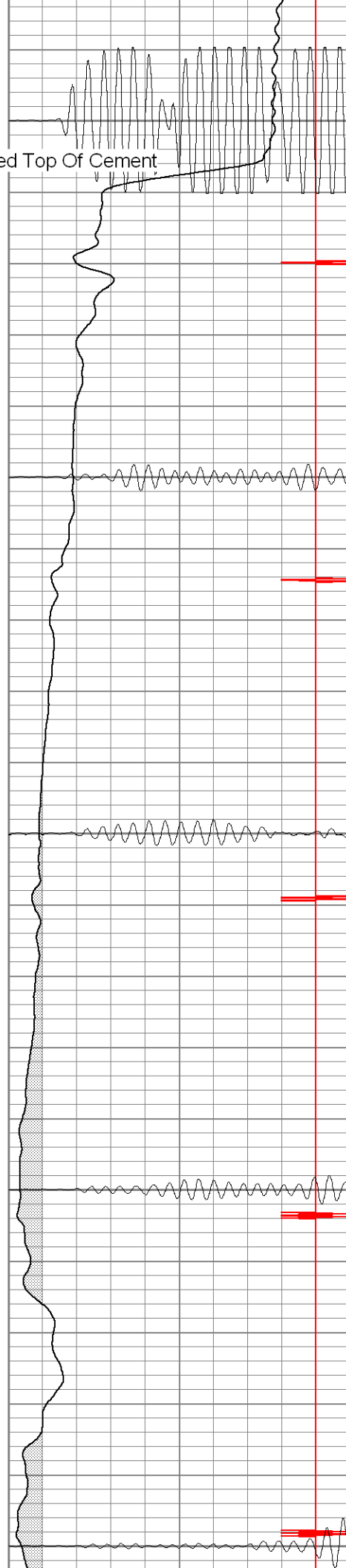
Estimated Top Of Cement

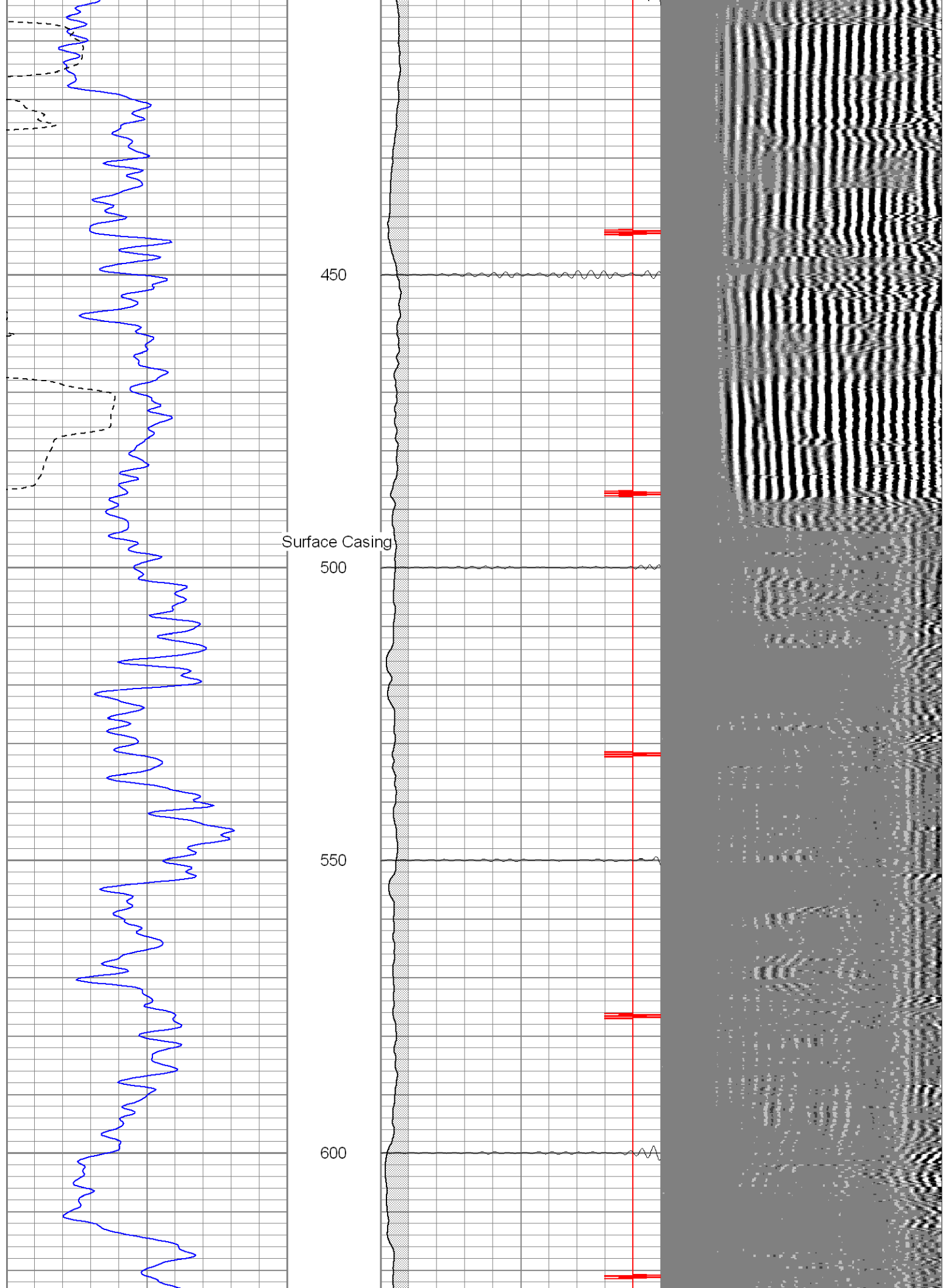
250

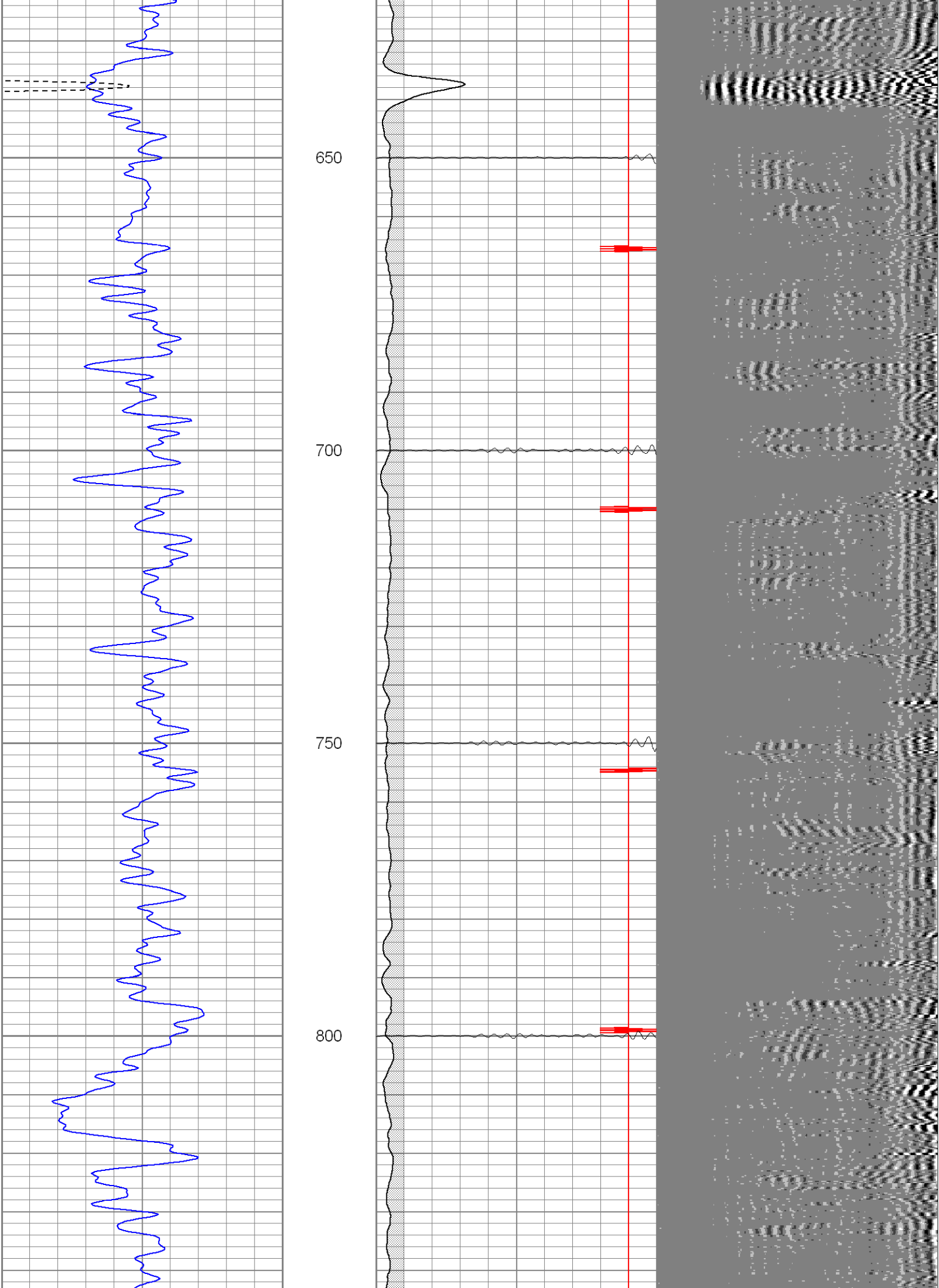
300

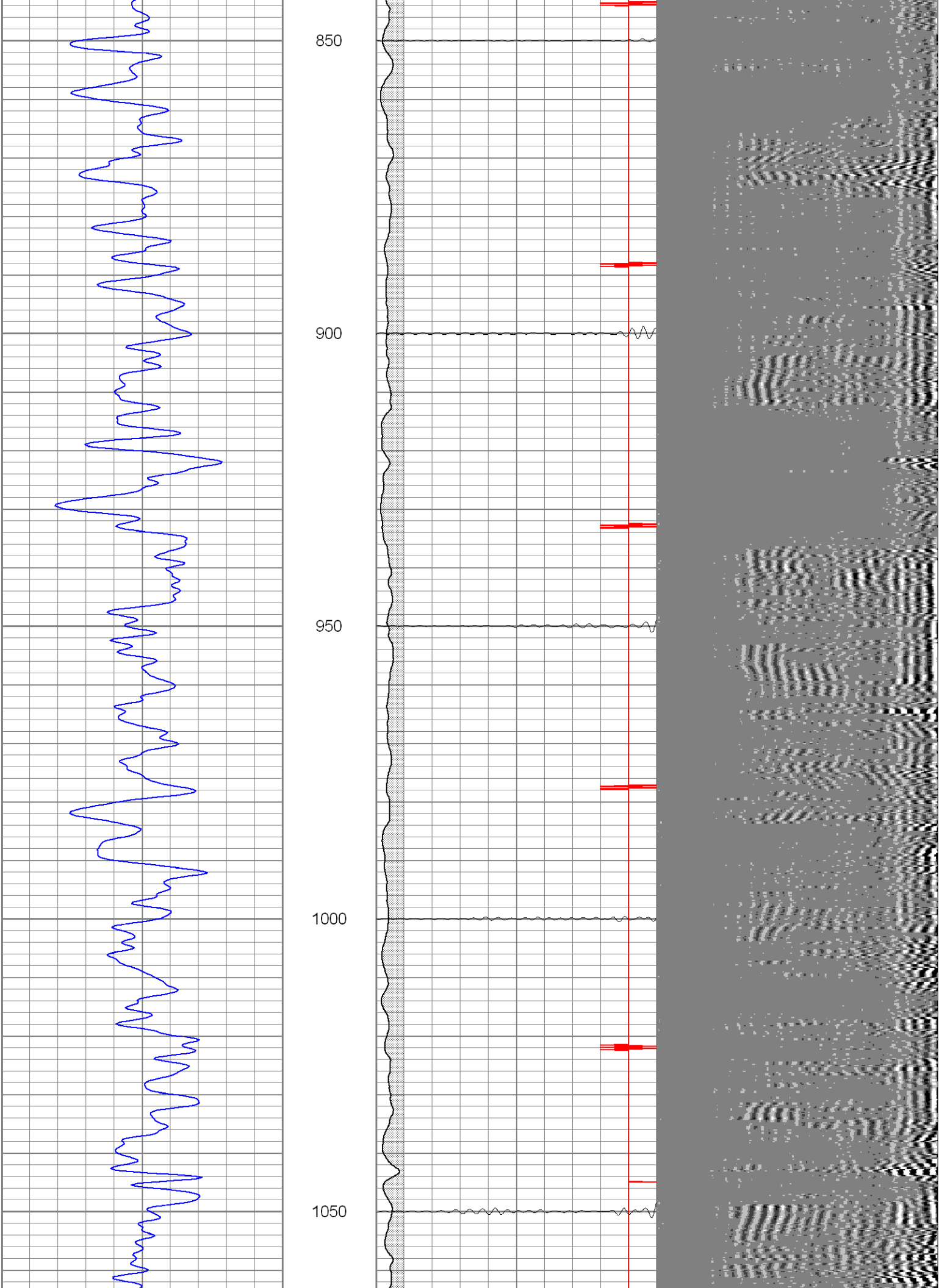
350

400

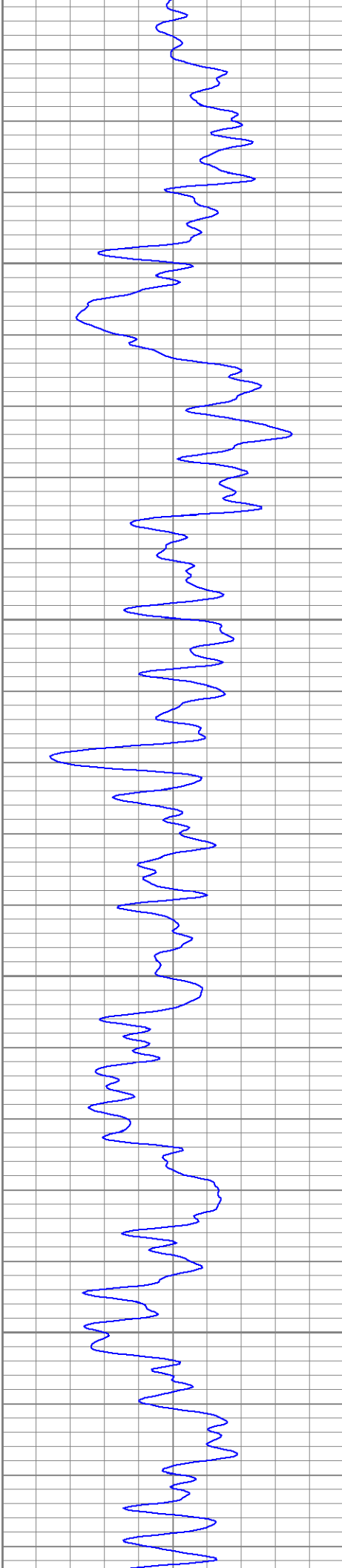










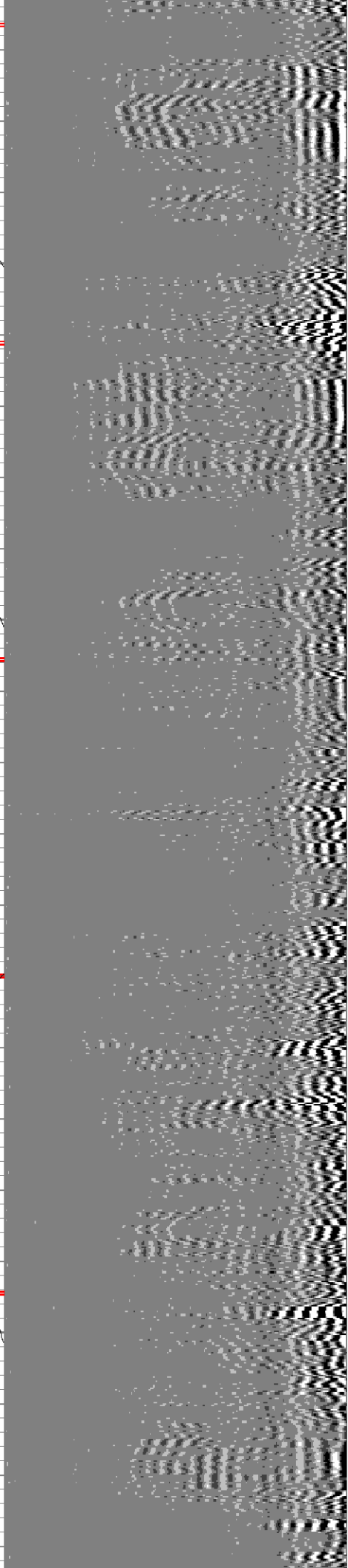
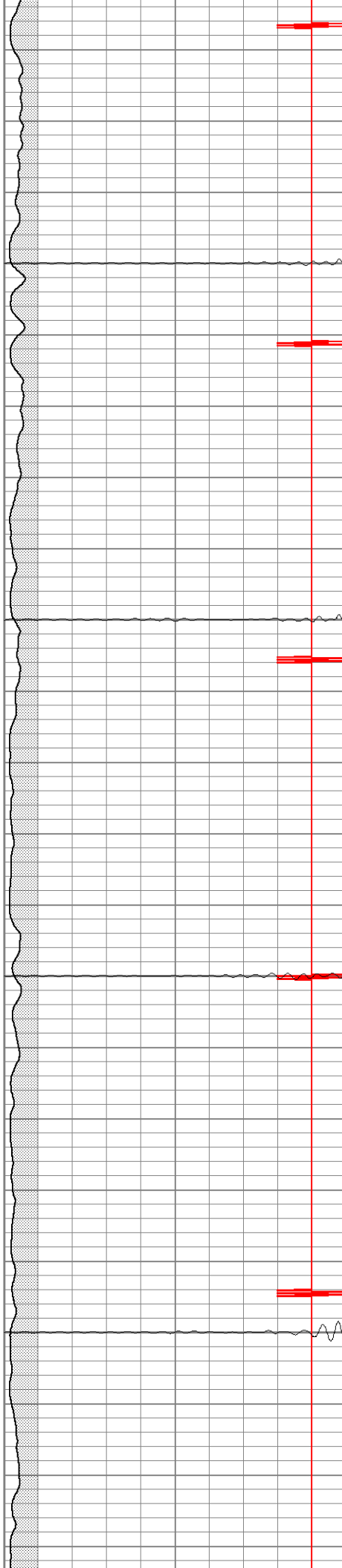


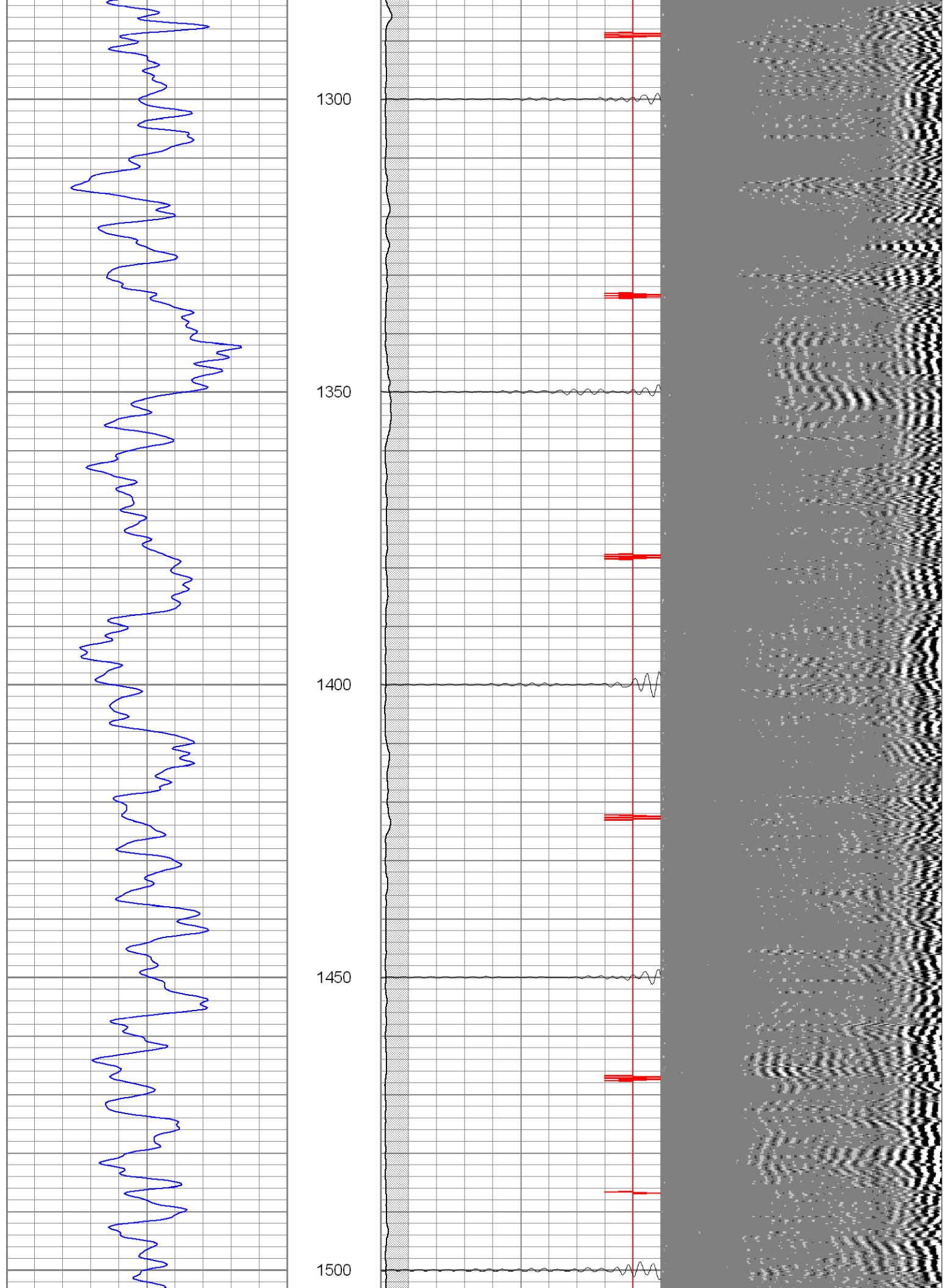
1100

1150

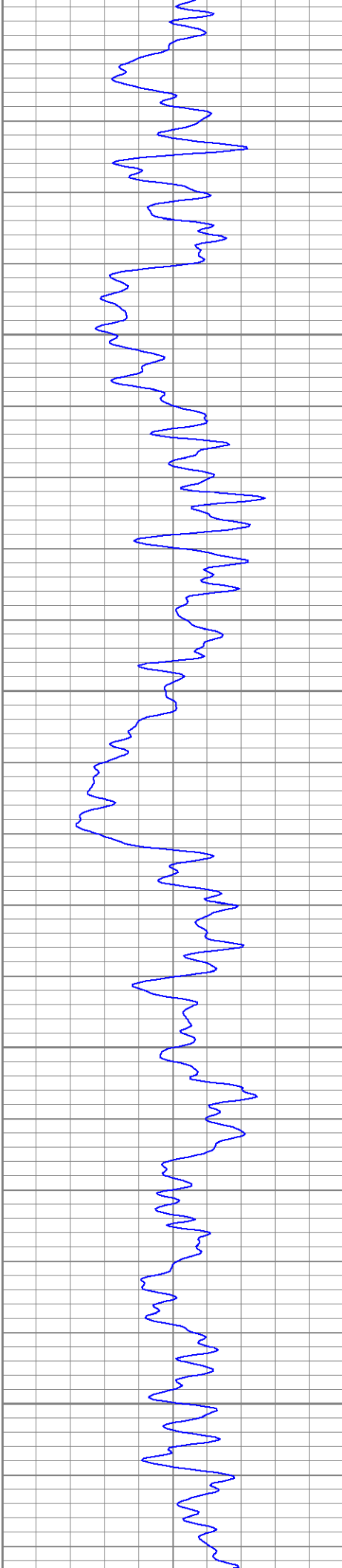
1200

1250







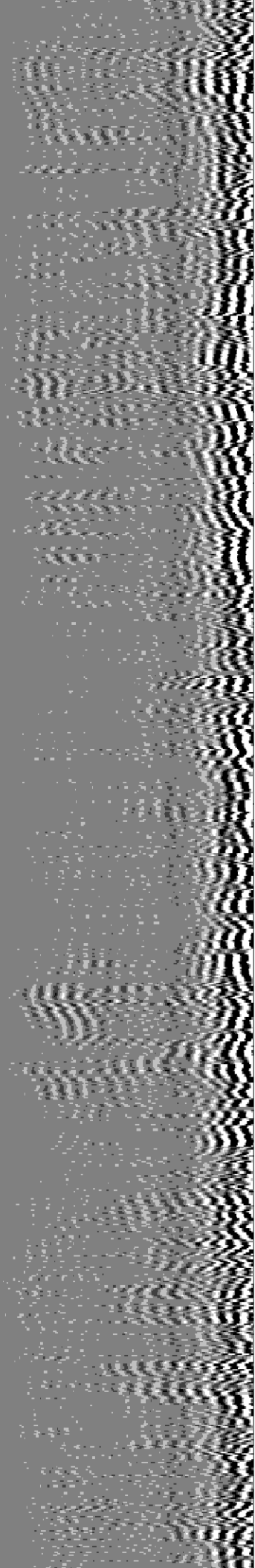


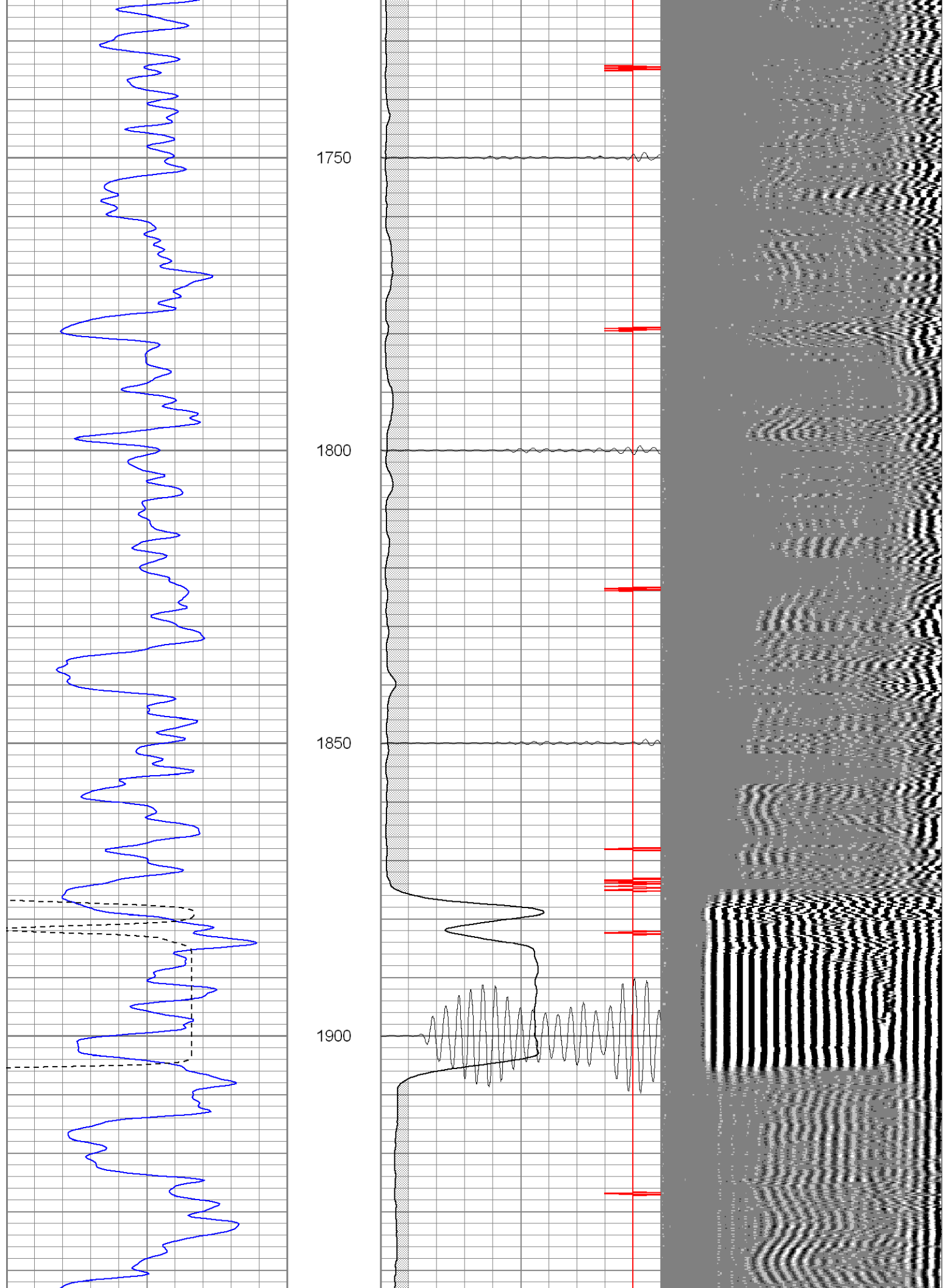
1550

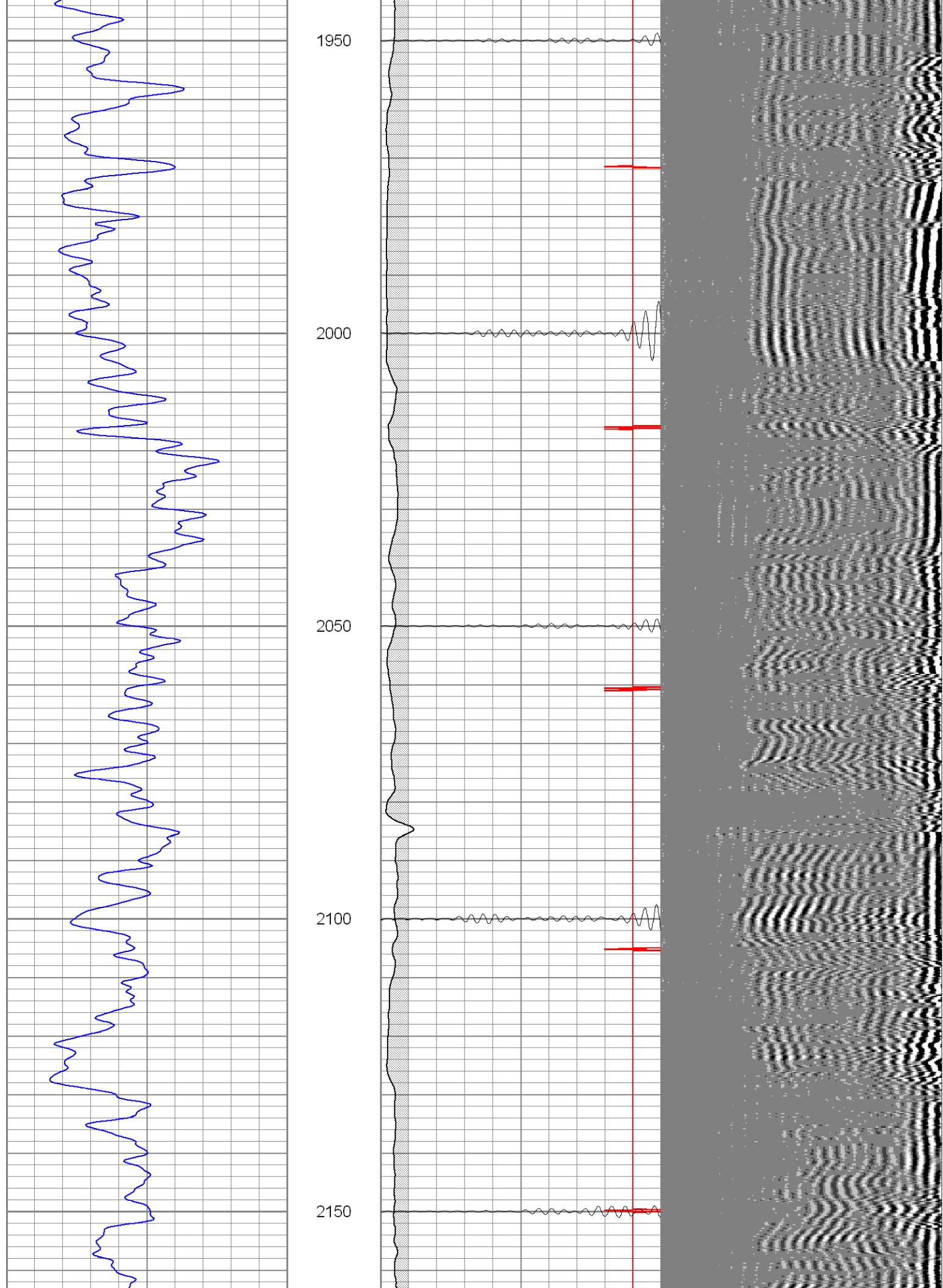
1600

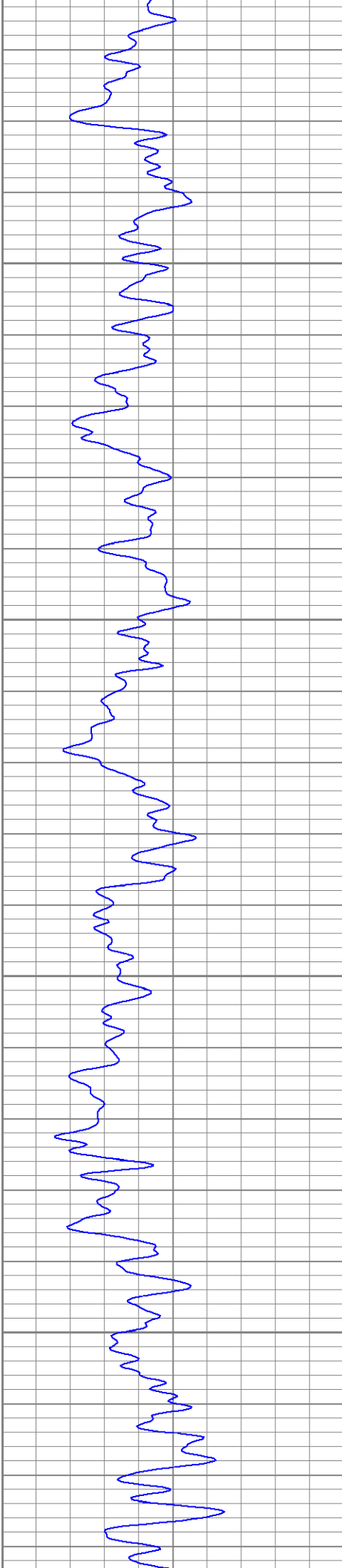
1650

1700







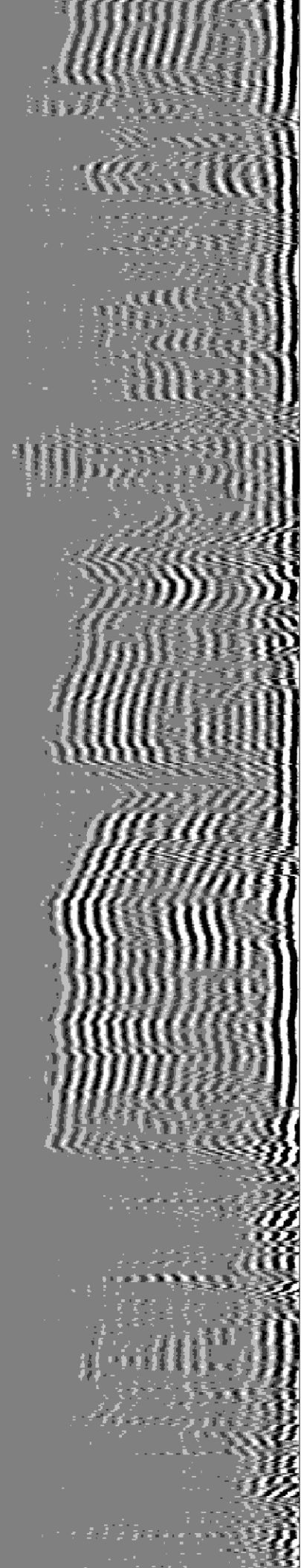
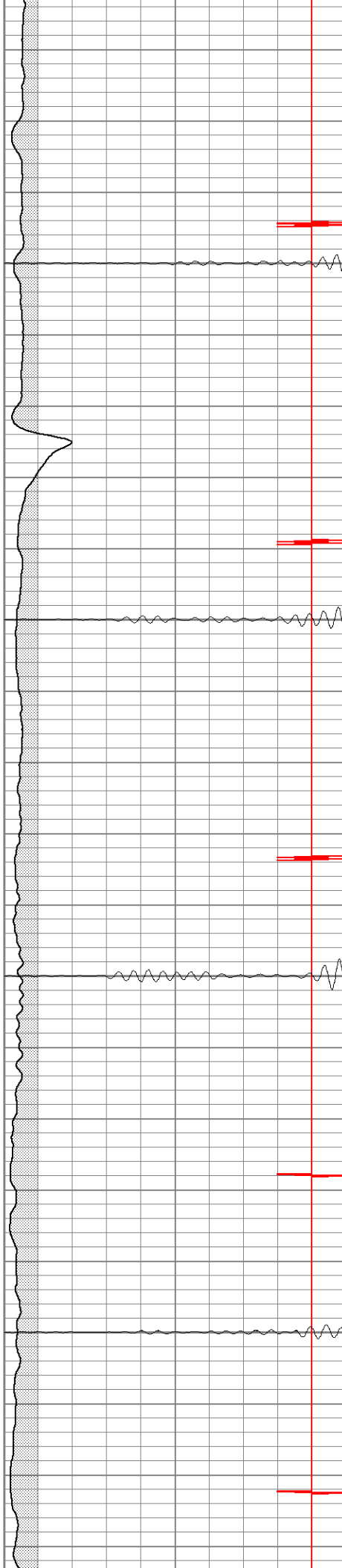


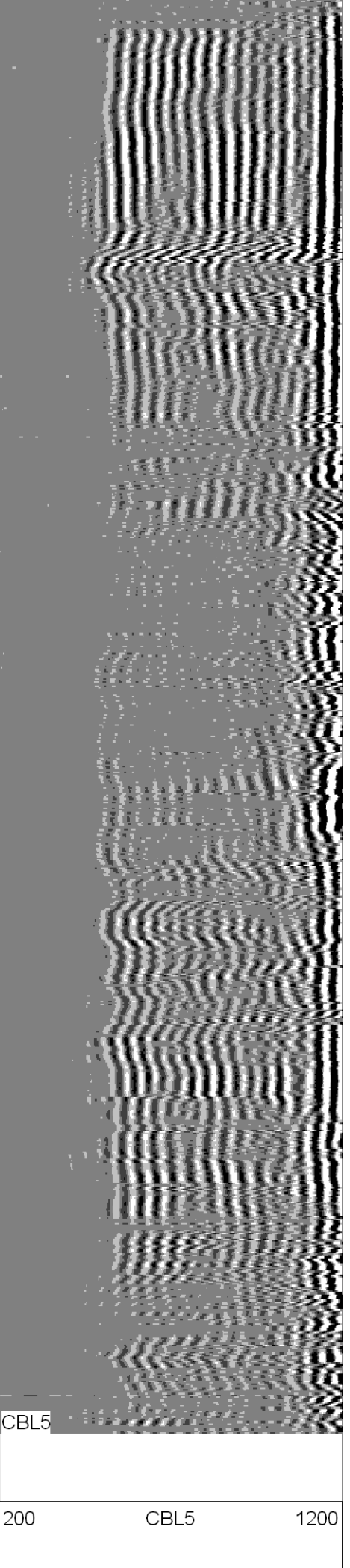
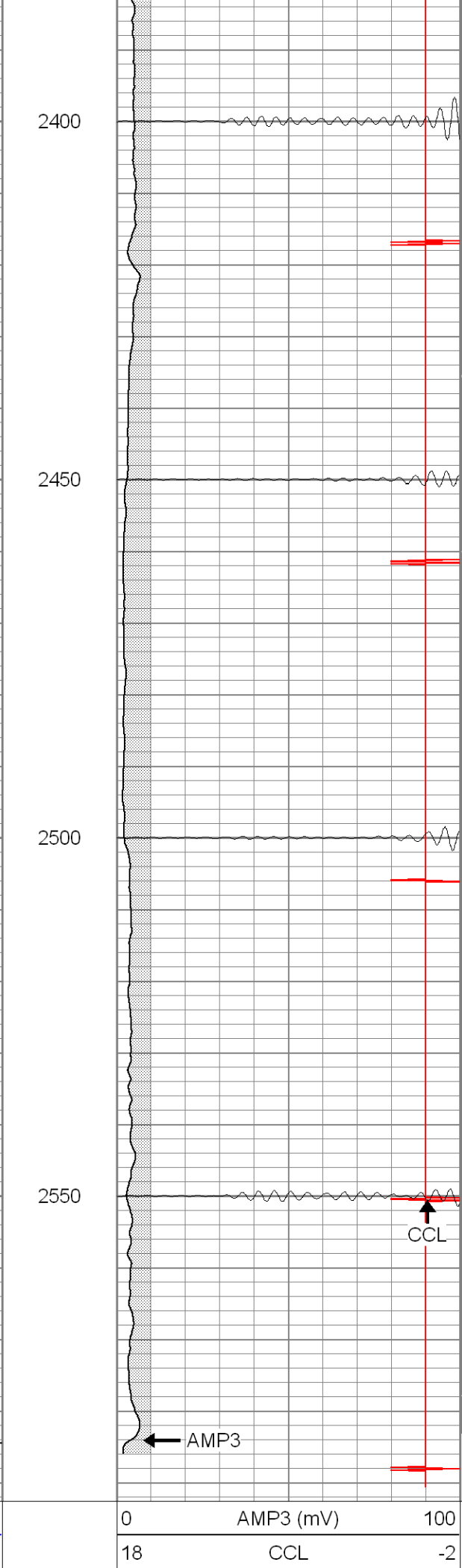
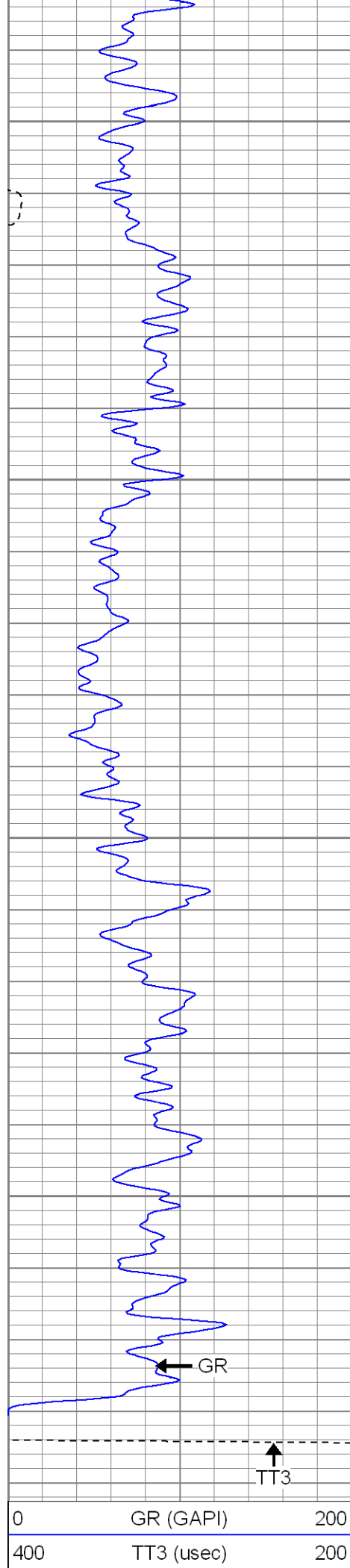
2200

2250

2300

2350





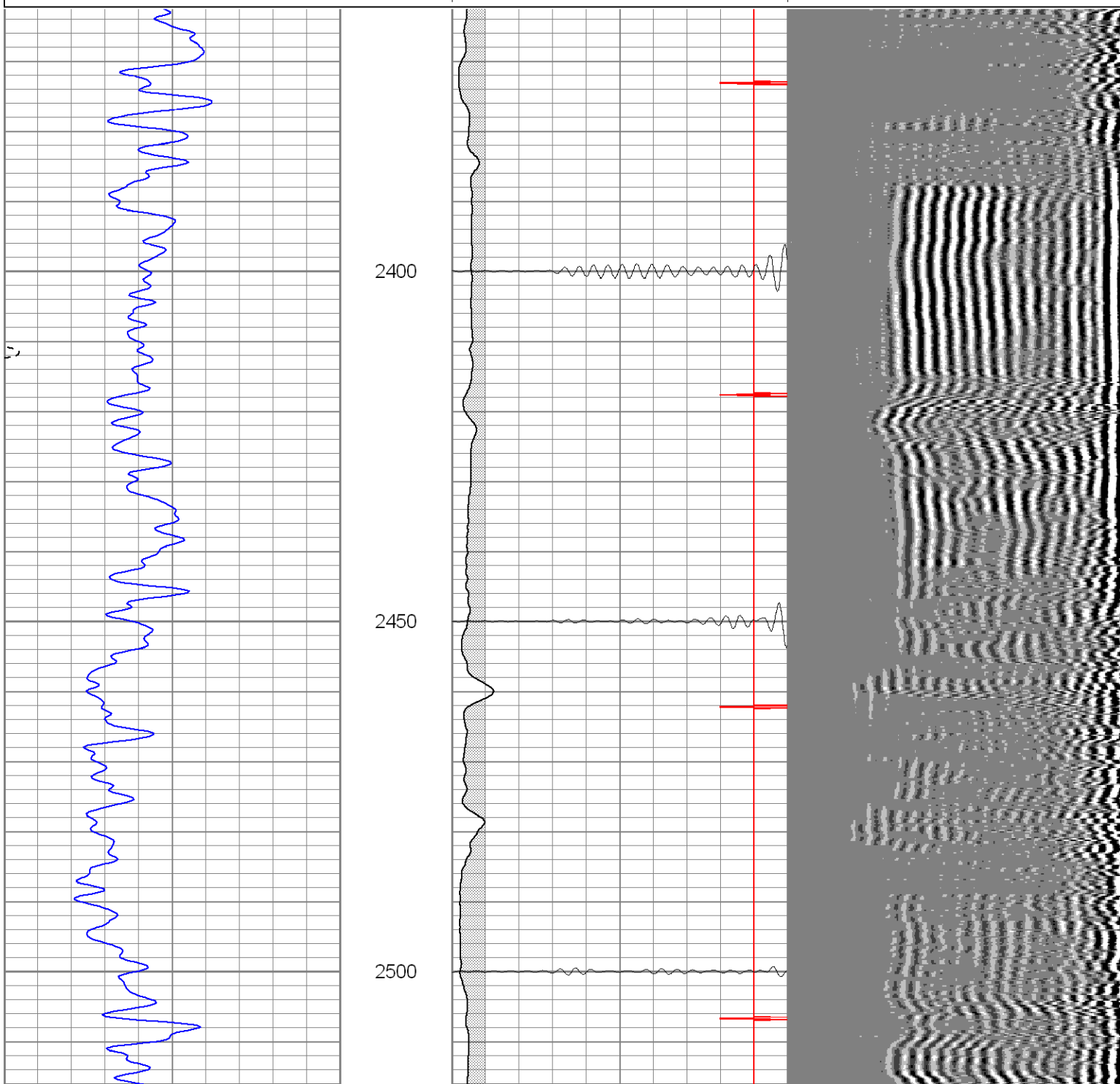


**SUPERIOR**Black Lick, Pa.  
Mercer, Pa.  
Wooster, Oh.  
Cleveland, Ok.  
Trinidad, Co.

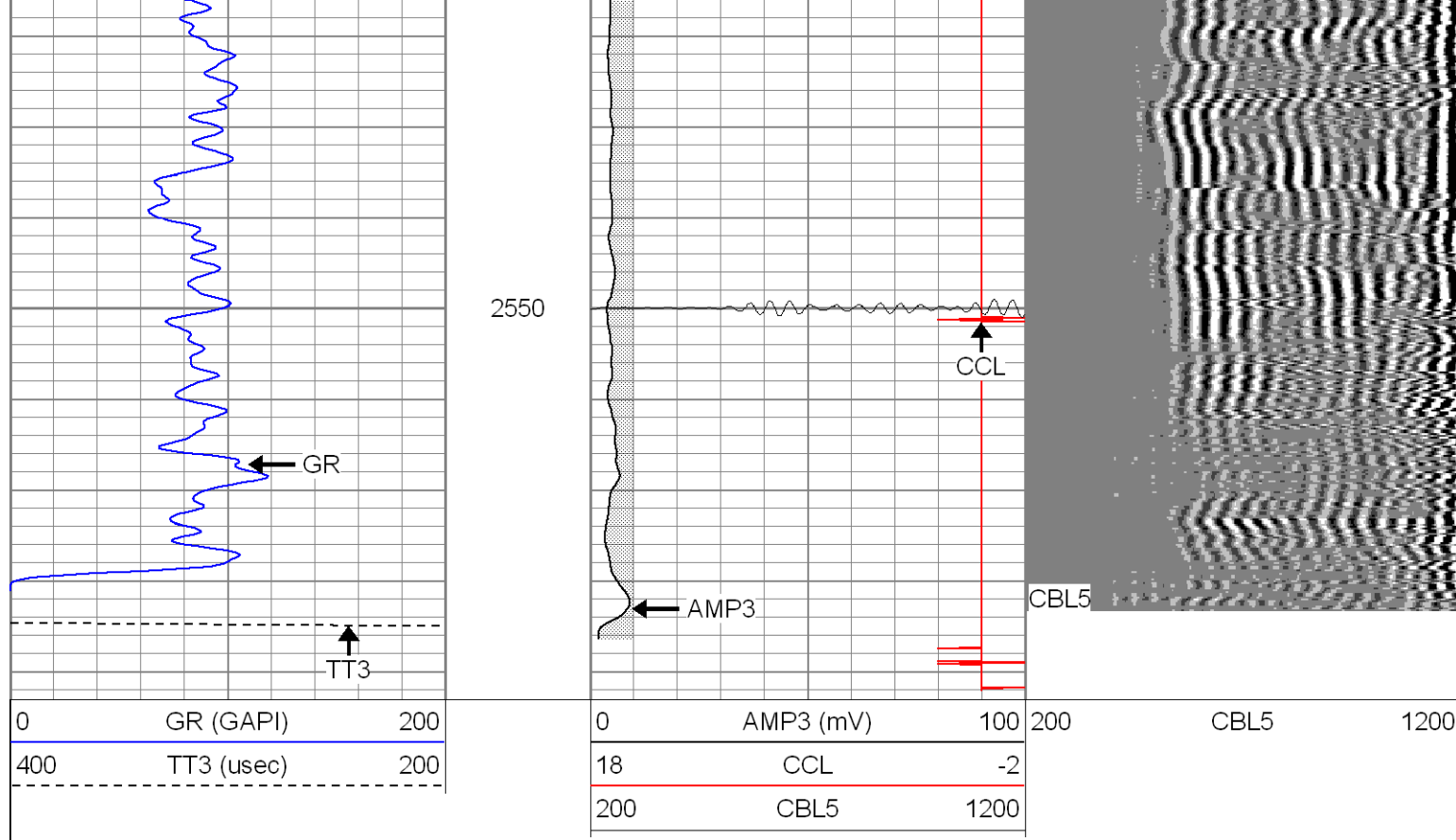
# Repeat Section 0 PSI

Database File: ac6-4v7507b.db  
Dataset Pathname: pass1  
Presentation Format: cblrt  
Dataset Creation: Thu Jul 05 08:30:44 2007 by Log Std Casedhole 07051  
Charted by: Depth in Feet scaled 1:240

0	GR (GAPI)	200	0	AMP3 (mV)	100	200	CBL5	1200
400	TT3 (usec)	200	18	CCL	-2			
			200	CBL5	1200			







### Calibration Report

Database File: ac6-4v7507b.db  
 Dataset Pathname: pass1  
 Dataset Creation: Thu Jul 05 08:30:44 2007 by Log Std Casedhole 07051

### Cement Bond Log Calibration Report

Serial Number:	Titan2		
Tool Model:	2		
Performed:	Thu Jul 05 08:23:35 2007		
Depth:	3855.89	ft	
Casing Diameter:	5.5	in	
	3' Spacing	5' Spacing	
Signal Zero:	1	1	mV
Calibrated Amplitude:	85	71.921	mV
Reading at Signal Zero:	-0.02	-0.00683594	V
Reading in Free Pipe:	1.6	1.4	V
Gain:	51.8519	50.4117	
Offset:	2.03704	1.34461	

### Gamma Ray Calibration Report

Serial Number:	TITAN2	
Tool Model:	T2	
Performed:	Tue Jul 03 10:53:05 2007	
Calibrator Value:	1.0	GAPI
Background Reading:	0.0	cps
Calibrator Reading:	1.0	cps
Sensitivity:	1.5000	GAPI/cps