

Company	Merit Energy Company	Other Services	None
Well	Churchill 2-71		
Field	Wattenberg		
County	Weld	State/Province	Colorado
Location	SHL: 707' FNL & 2012' FWL NE NW BHL: 1300' FNL & 2616' FWL Sec. 28, Twp. 5N, Rge. 64W		
Permanent Datum	GL	Elevation	4630
Log Measured From	KB	K.B. 4644 D.F. 4643 G.L. 4630	
Drilling Measured From	KB		
Date	June 10, 2007		
Run Number	1		
Depth Driller	7214		
Depth Logger	7211		
Bottom Logged Interval	7211		
Top Log Interval			
Casing Driller	419		
Casing Logger	419		
Bit Size	7-7/8"		
Type Fluid in Hole	Chem-Gel		
Density / Viscosity	10.3 / 82		
pH / Fluid Loss	7.5 / 11.2		
Source of Sample	Flowline		
Rm @ Meas. Temp	3.26 @ 77° F		
Rmt @ Meas. Temp	2.45 @ 77° F		
Rmc @ Meas. Temp	4.08 @ 77° F		
Source of Rmtf / Rmc	Measure / Calc		
Rm @ BHT	1.27 @ 198° F		
Time Circulation Stopped	1400 06/09/07		
Time Logger on Bottom	0100 06/10/07		
Maximum Recorded Temperature	198° F		
Equipment Number	4078		
Location	Brighton, CO		
Recorded By	Macliel Staron		
Witnessed By	Don Buckles		

<<< Fold Here >>>

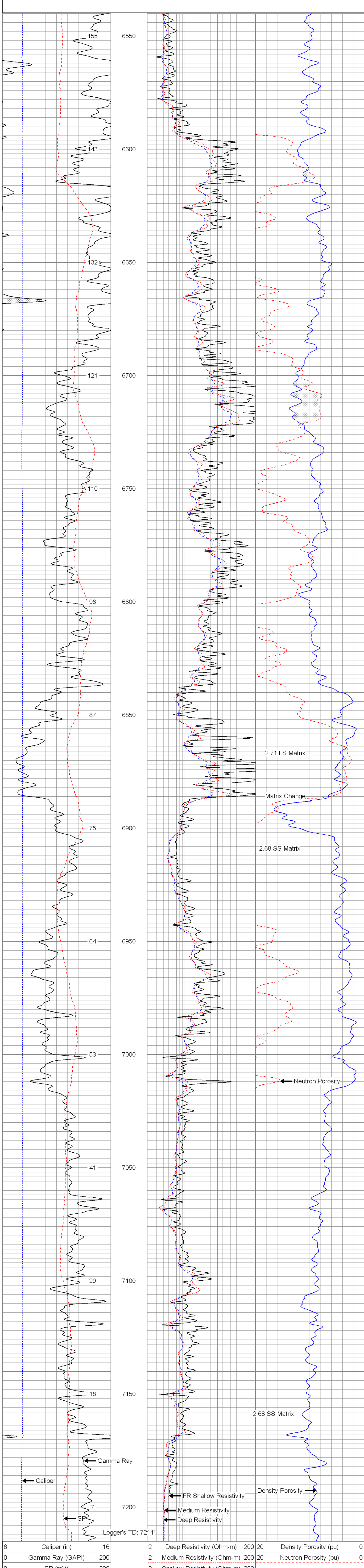
All interpretations are opinions based on inferences from electrical or other measurements and we cannot and do not guarantee the accuracy or correctness of any interpretation, and we shall not, except in the case of gross or willful negligence on our part, be liable or responsible for any loss, costs, damages, or expenses incurred or sustained by anyone resulting from any interpretation made by any of our officers, agents or employees. These interpretations are also subject to our general terms and conditions set out in our current Price Schedule.

Comments

Annular volume calculated for 4.5" casing
KKA 8 Drilling Rig
Thank you for using Phoenix Surveys!!
API #: 05-123-25024-00

Database File: 7394.db
Dataset Pathname: pass3
Presentation Format: pdc
Dataset Creation: Sun Jun 10 00:58:41 2007 by Log Open-Cased 051020
Charted by: Depth in Feet scaled 1:240

6	Caliper (in)	16	2	Deep Resistivity (Ohm-m)	200	20	Density Porosity (pu)	0
0	Gamma Ray (GAPI)	200	2	Medium Resistivity (Ohm-m)	200	20	Neutron Porosity (pu)	0
0	SP (mV)	200	2	Shallow Resistivity (Ohm-m)	200			



6	Caliper (in)	16	2	Deep Resistivity (Ohm-m)	200	20	Density Porosity (pu)	0
0	Gamma Ray (GAPI)	200	2	Medium Resistivity (Ohm-m)	200	20	Neutron Porosity (pu)	0
0	SP (mV)	200	2	Shallow Resistivity (Ohm-m)	200			