



eog resources

Denver Division- Colorado

DJ - Hereford Ranch

Fox Creek 04-27H

Fox Creek 4-27H

Original Wellbore

Plan: APD

Standard Planning Report

22 January, 2010

Database:	EDM 2003.21 Single User Db	Local Co-ordinate Reference:	Site Fox Creek 04-27H
Company:	Denver Division- Colorado	TVD Reference:	RIG @ 5405.0ft (TBD)
Project:	DJ - Hereford Ranch	MD Reference:	RIG @ 5405.0ft (TBD)
Site:	Fox Creek 04-27H	North Reference:	True
Well:	Fox Creek 4-27H	Survey Calculation Method:	Minimum Curvature
Wellbore:	Original Wellbore		
Design:	APD		

Project	DJ - Hereford Ranch, Weld County		
Map System:	US State Plane 1927 (Exact solution)	System Datum:	Mean Sea Level
Geo Datum:	NAD 1927 (NADCON CONUS)		
Map Zone:	Colorado North 501		

Site		Fox Creek 04-27H			
Site Position:		Northing:	599,708.81 ft	Latitude:	40° 58' 28.290 N
From:	Lat/Long	Easting:	2,300,555.17 ft	Longitude:	104° 24' 41.850 W
Position Uncertainty:	0.0 ft	Slot Radius:	"	Grid Convergence:	0.70 °

Well	Fox Creek 4-27H					
Well Position	+N/-S	0.0 ft	Northing:	599,708.81 ft	Latitude:	40° 58' 28.290 N
	+E/-W	0.0 ft	Easting:	2,300,555.17 ft	Longitude:	104° 24' 41.850 W
Position Uncertainty	0.0 ft	Wellhead Elevation:	ft	Ground Level:	5,380.0 ft	

Wellbore	Original Wellbore				
Magnetics	Model Name	Sample Date	Declination (°)	Dip Angle (°)	Field Strength (nT)
	IGRF200510	1/22/2010	8.87	67.63	53,629

Design	APD				
Audit Notes:					
Version:	Phase:	PROTOTYPE	Tie On Depth:	0.0	
Vertical Section:	Depth From (TVD) (ft)	+N/-S (ft)	+E/-W (ft)	Direction (°)	
	0.0	0.0	0.0	322.82	

Plan Sections										
Measured Depth (ft)	Inclination (°)	Azimuth (°)	Vertical Depth (ft)	+N/-S (ft)	+E/-W (ft)	Dogleg Rate (°/100ft)	Build Rate (°/100ft)	Turn Rate (°/100ft)	TFO (°)	Target
0.0	0.00	0.00	0.0	0.0	0.0	0.00	0.00	0.00	0.00	
6,942.5	0.00	0.00	6,942.5	0.0	0.0	0.00	0.00	0.00	0.00	
7,692.5	90.00	322.82	7,420.0	380.4	-288.5	12.00	12.00	0.00	322.82	
12,431.4	90.00	322.82	7,420.0	4,156.1	-3,152.4	0.00	0.00	0.00	0.00	Fox Creek 4-27H (BH)

Database: EDM 2003.21 Single User Db
Company: Denver Division- Colorado
Project: DJ - Hereford Ranch
Site: Fox Creek 04-27H
Well: Fox Creek 4-27H
Wellbore: Original Wellbore
Design: APD

Local Co-ordinate Reference: Site Fox Creek 04-27H
TVD Reference: RIG @ 5405.0ft (TBD)
MD Reference: RIG @ 5405.0ft (TBD)
North Reference: True
Survey Calculation Method: Minimum Curvature

Planned Survey

Measured Depth (ft)	Inclination (°)	Azimuth (°)	Vertical Depth (ft)	+N/-S (ft)	+E/-W (ft)	Vertical Section (ft)	Dogleg Rate (°/100ft)	Build Rate (°/100ft)	Turn Rate (°/100ft)
0.0	0.00	0.00	0.0	0.0	0.0	0.0	0.00	0.00	0.00
100.0	0.00	0.00	100.0	0.0	0.0	0.0	0.00	0.00	0.00
200.0	0.00	0.00	200.0	0.0	0.0	0.0	0.00	0.00	0.00
300.0	0.00	0.00	300.0	0.0	0.0	0.0	0.00	0.00	0.00
400.0	0.00	0.00	400.0	0.0	0.0	0.0	0.00	0.00	0.00
500.0	0.00	0.00	500.0	0.0	0.0	0.0	0.00	0.00	0.00
600.0	0.00	0.00	600.0	0.0	0.0	0.0	0.00	0.00	0.00
700.0	0.00	0.00	700.0	0.0	0.0	0.0	0.00	0.00	0.00
800.0	0.00	0.00	800.0	0.0	0.0	0.0	0.00	0.00	0.00
900.0	0.00	0.00	900.0	0.0	0.0	0.0	0.00	0.00	0.00
1,000.0	0.00	0.00	1,000.0	0.0	0.0	0.0	0.00	0.00	0.00
1,100.0	0.00	0.00	1,100.0	0.0	0.0	0.0	0.00	0.00	0.00
1,200.0	0.00	0.00	1,200.0	0.0	0.0	0.0	0.00	0.00	0.00
1,300.0	0.00	0.00	1,300.0	0.0	0.0	0.0	0.00	0.00	0.00
1,400.0	0.00	0.00	1,400.0	0.0	0.0	0.0	0.00	0.00	0.00
1,500.0	0.00	0.00	1,500.0	0.0	0.0	0.0	0.00	0.00	0.00
9 5/8"									
1,600.0	0.00	0.00	1,600.0	0.0	0.0	0.0	0.00	0.00	0.00
1,700.0	0.00	0.00	1,700.0	0.0	0.0	0.0	0.00	0.00	0.00
1,800.0	0.00	0.00	1,800.0	0.0	0.0	0.0	0.00	0.00	0.00
1,900.0	0.00	0.00	1,900.0	0.0	0.0	0.0	0.00	0.00	0.00
2,000.0	0.00	0.00	2,000.0	0.0	0.0	0.0	0.00	0.00	0.00
2,100.0	0.00	0.00	2,100.0	0.0	0.0	0.0	0.00	0.00	0.00
2,200.0	0.00	0.00	2,200.0	0.0	0.0	0.0	0.00	0.00	0.00
2,300.0	0.00	0.00	2,300.0	0.0	0.0	0.0	0.00	0.00	0.00
2,400.0	0.00	0.00	2,400.0	0.0	0.0	0.0	0.00	0.00	0.00
2,500.0	0.00	0.00	2,500.0	0.0	0.0	0.0	0.00	0.00	0.00
2,600.0	0.00	0.00	2,600.0	0.0	0.0	0.0	0.00	0.00	0.00
2,700.0	0.00	0.00	2,700.0	0.0	0.0	0.0	0.00	0.00	0.00
2,800.0	0.00	0.00	2,800.0	0.0	0.0	0.0	0.00	0.00	0.00
2,900.0	0.00	0.00	2,900.0	0.0	0.0	0.0	0.00	0.00	0.00
3,000.0	0.00	0.00	3,000.0	0.0	0.0	0.0	0.00	0.00	0.00
3,100.0	0.00	0.00	3,100.0	0.0	0.0	0.0	0.00	0.00	0.00
3,200.0	0.00	0.00	3,200.0	0.0	0.0	0.0	0.00	0.00	0.00
3,300.0	0.00	0.00	3,300.0	0.0	0.0	0.0	0.00	0.00	0.00
3,400.0	0.00	0.00	3,400.0	0.0	0.0	0.0	0.00	0.00	0.00
3,500.0	0.00	0.00	3,500.0	0.0	0.0	0.0	0.00	0.00	0.00
3,600.0	0.00	0.00	3,600.0	0.0	0.0	0.0	0.00	0.00	0.00
3,700.0	0.00	0.00	3,700.0	0.0	0.0	0.0	0.00	0.00	0.00
3,800.0	0.00	0.00	3,800.0	0.0	0.0	0.0	0.00	0.00	0.00
3,900.0	0.00	0.00	3,900.0	0.0	0.0	0.0	0.00	0.00	0.00
4,000.0	0.00	0.00	4,000.0	0.0	0.0	0.0	0.00	0.00	0.00
4,100.0	0.00	0.00	4,100.0	0.0	0.0	0.0	0.00	0.00	0.00
4,200.0	0.00	0.00	4,200.0	0.0	0.0	0.0	0.00	0.00	0.00
4,300.0	0.00	0.00	4,300.0	0.0	0.0	0.0	0.00	0.00	0.00
4,400.0	0.00	0.00	4,400.0	0.0	0.0	0.0	0.00	0.00	0.00
4,500.0	0.00	0.00	4,500.0	0.0	0.0	0.0	0.00	0.00	0.00
4,600.0	0.00	0.00	4,600.0	0.0	0.0	0.0	0.00	0.00	0.00
4,700.0	0.00	0.00	4,700.0	0.0	0.0	0.0	0.00	0.00	0.00
4,800.0	0.00	0.00	4,800.0	0.0	0.0	0.0	0.00	0.00	0.00
4,900.0	0.00	0.00	4,900.0	0.0	0.0	0.0	0.00	0.00	0.00
5,000.0	0.00	0.00	5,000.0	0.0	0.0	0.0	0.00	0.00	0.00
5,100.0	0.00	0.00	5,100.0	0.0	0.0	0.0	0.00	0.00	0.00
5,200.0	0.00	0.00	5,200.0	0.0	0.0	0.0	0.00	0.00	0.00

Database: EDM 2003.21 Single User Db
Company: Denver Division- Colorado
Project: DJ - Hereford Ranch
Site: Fox Creek 04-27H
Well: Fox Creek 4-27H
Wellbore: Original Wellbore
Design: APD

Local Co-ordinate Reference: Site Fox Creek 04-27H
TVD Reference: RIG @ 5405.0ft (TBD)
MD Reference: RIG @ 5405.0ft (TBD)
North Reference: True
Survey Calculation Method: Minimum Curvature

Planned Survey

Measured Depth (ft)	Inclination (°)	Azimuth (°)	Vertical Depth (ft)	+N/-S (ft)	+E/-W (ft)	Vertical Section (ft)	Dogleg Rate (°/100ft)	Build Rate (°/100ft)	Turn Rate (°/100ft)
5,300.0	0.00	0.00	5,300.0	0.0	0.0	0.0	0.00	0.00	0.00
5,400.0	0.00	0.00	5,400.0	0.0	0.0	0.0	0.00	0.00	0.00
5,500.0	0.00	0.00	5,500.0	0.0	0.0	0.0	0.00	0.00	0.00
5,600.0	0.00	0.00	5,600.0	0.0	0.0	0.0	0.00	0.00	0.00
5,700.0	0.00	0.00	5,700.0	0.0	0.0	0.0	0.00	0.00	0.00
5,800.0	0.00	0.00	5,800.0	0.0	0.0	0.0	0.00	0.00	0.00
5,900.0	0.00	0.00	5,900.0	0.0	0.0	0.0	0.00	0.00	0.00
6,000.0	0.00	0.00	6,000.0	0.0	0.0	0.0	0.00	0.00	0.00
6,100.0	0.00	0.00	6,100.0	0.0	0.0	0.0	0.00	0.00	0.00
6,200.0	0.00	0.00	6,200.0	0.0	0.0	0.0	0.00	0.00	0.00
6,300.0	0.00	0.00	6,300.0	0.0	0.0	0.0	0.00	0.00	0.00
6,400.0	0.00	0.00	6,400.0	0.0	0.0	0.0	0.00	0.00	0.00
6,500.0	0.00	0.00	6,500.0	0.0	0.0	0.0	0.00	0.00	0.00
6,600.0	0.00	0.00	6,600.0	0.0	0.0	0.0	0.00	0.00	0.00
6,700.0	0.00	0.00	6,700.0	0.0	0.0	0.0	0.00	0.00	0.00
6,800.0	0.00	0.00	6,800.0	0.0	0.0	0.0	0.00	0.00	0.00
6,900.0	0.00	0.00	6,900.0	0.0	0.0	0.0	0.00	0.00	0.00
6,942.5	0.00	0.00	6,942.5	0.0	0.0	0.0	0.00	0.00	0.00
7,000.0	6.90	322.82	6,999.9	2.8	-2.1	3.5	12.00	12.00	0.00
7,100.0	18.90	322.82	7,097.2	20.5	-15.5	25.7	12.00	12.00	0.00
7,200.0	30.90	322.82	7,187.7	54.0	-40.9	67.8	12.00	12.00	0.00
7,300.0	42.90	322.82	7,267.5	101.7	-77.2	127.7	12.00	12.00	0.00
7,400.0	54.90	322.82	7,333.2	161.7	-122.6	202.9	12.00	12.00	0.00
7,500.0	66.90	322.82	7,381.7	231.1	-175.3	290.1	12.00	12.00	0.00
7,600.0	78.90	322.82	7,411.1	307.1	-233.0	385.5	12.00	12.00	0.00
7,692.5	90.00	322.82	7,420.0	380.4	-288.5	477.4	12.00	12.00	0.00
7"									
7,700.0	90.00	322.82	7,420.0	386.4	-293.1	484.9	0.06	0.06	0.00
7,800.0	90.00	322.82	7,420.0	466.0	-353.5	584.9	0.00	0.00	0.00
7,900.0	90.00	322.82	7,420.0	545.7	-413.9	684.9	0.00	0.00	0.00
8,000.0	90.00	322.82	7,420.0	625.4	-474.4	784.9	0.00	0.00	0.00
8,100.0	90.00	322.82	7,420.0	705.1	-534.8	884.9	0.00	0.00	0.00
8,200.0	90.00	322.82	7,420.0	784.7	-595.2	984.9	0.00	0.00	0.00
8,300.0	90.00	322.82	7,420.0	864.4	-655.6	1,084.9	0.00	0.00	0.00
8,400.0	90.00	322.82	7,420.0	944.1	-716.1	1,184.9	0.00	0.00	0.00
8,500.0	90.00	322.82	7,420.0	1,023.8	-776.5	1,284.9	0.00	0.00	0.00
8,600.0	90.00	322.82	7,420.0	1,103.4	-836.9	1,384.9	0.00	0.00	0.00
8,700.0	90.00	322.82	7,420.0	1,183.1	-897.4	1,484.9	0.00	0.00	0.00
8,800.0	90.00	322.82	7,420.0	1,262.8	-957.8	1,584.9	0.00	0.00	0.00
8,900.0	90.00	322.82	7,420.0	1,342.4	-1,018.2	1,684.9	0.00	0.00	0.00
9,000.0	90.00	322.82	7,420.0	1,422.1	-1,078.7	1,784.9	0.00	0.00	0.00
9,100.0	90.00	322.82	7,420.0	1,501.8	-1,139.1	1,884.9	0.00	0.00	0.00
9,200.0	90.00	322.82	7,420.0	1,581.5	-1,199.5	1,984.9	0.00	0.00	0.00
9,300.0	90.00	322.82	7,420.0	1,661.1	-1,260.0	2,084.9	0.00	0.00	0.00
9,400.0	90.00	322.82	7,420.0	1,740.8	-1,320.4	2,184.9	0.00	0.00	0.00
9,500.0	90.00	322.82	7,420.0	1,820.5	-1,380.8	2,284.9	0.00	0.00	0.00
9,600.0	90.00	322.82	7,420.0	1,900.2	-1,441.3	2,384.9	0.00	0.00	0.00
9,700.0	90.00	322.82	7,420.0	1,979.8	-1,501.7	2,484.9	0.00	0.00	0.00
9,800.0	90.00	322.82	7,420.0	2,059.5	-1,562.1	2,584.9	0.00	0.00	0.00
9,900.0	90.00	322.82	7,420.0	2,139.2	-1,622.6	2,684.9	0.00	0.00	0.00
10,000.0	90.00	322.82	7,420.0	2,218.9	-1,683.0	2,784.9	0.00	0.00	0.00
10,100.0	90.00	322.82	7,420.0	2,298.5	-1,743.4	2,884.9	0.00	0.00	0.00
10,200.0	90.00	322.82	7,420.0	2,378.2	-1,803.9	2,984.9	0.00	0.00	0.00

Database:	EDM 2003.21 Single User Db	Local Co-ordinate Reference:	Site Fox Creek 04-27H
Company:	Denver Division- Colorado	TVD Reference:	RIG @ 5405.0ft (TBD)
Project:	DJ - Hereford Ranch	MD Reference:	RIG @ 5405.0ft (TBD)
Site:	Fox Creek 04-27H	North Reference:	True
Well:	Fox Creek 4-27H	Survey Calculation Method:	Minimum Curvature
Wellbore:	Original Wellbore		
Design:	APD		

Planned Survey

Measured Depth (ft)	Inclination (°)	Azimuth (°)	Vertical Depth (ft)	+N/-S (ft)	+E/-W (ft)	Vertical Section (ft)	Dogleg Rate (°/100ft)	Build Rate (°/100ft)	Turn Rate (°/100ft)
10,300.0	90.00	322.82	7,420.0	2,457.9	-1,864.3	3,084.9	0.00	0.00	0.00
10,400.0	90.00	322.82	7,420.0	2,537.6	-1,924.7	3,184.9	0.00	0.00	0.00
10,500.0	90.00	322.82	7,420.0	2,617.2	-1,985.2	3,284.9	0.00	0.00	0.00
10,600.0	90.00	322.82	7,420.0	2,696.9	-2,045.6	3,384.9	0.00	0.00	0.00
10,700.0	90.00	322.82	7,420.0	2,776.6	-2,106.0	3,484.9	0.00	0.00	0.00
10,800.0	90.00	322.82	7,420.0	2,856.3	-2,166.5	3,584.9	0.00	0.00	0.00
10,900.0	90.00	322.82	7,420.0	2,935.9	-2,226.9	3,684.9	0.00	0.00	0.00
11,000.0	90.00	322.82	7,420.0	3,015.6	-2,287.3	3,784.9	0.00	0.00	0.00
11,100.0	90.00	322.82	7,420.0	3,095.3	-2,347.8	3,884.9	0.00	0.00	0.00
11,200.0	90.00	322.82	7,420.0	3,174.9	-2,408.2	3,984.9	0.00	0.00	0.00
11,300.0	90.00	322.82	7,420.0	3,254.6	-2,468.6	4,084.9	0.00	0.00	0.00
11,400.0	90.00	322.82	7,420.0	3,334.3	-2,529.1	4,184.9	0.00	0.00	0.00
11,500.0	90.00	322.82	7,420.0	3,414.0	-2,589.5	4,284.9	0.00	0.00	0.00
11,600.0	90.00	322.82	7,420.0	3,493.6	-2,649.9	4,384.9	0.00	0.00	0.00
11,700.0	90.00	322.82	7,420.0	3,573.3	-2,710.4	4,484.9	0.00	0.00	0.00
11,800.0	90.00	322.82	7,420.0	3,653.0	-2,770.8	4,584.9	0.00	0.00	0.00
11,900.0	90.00	322.82	7,420.0	3,732.7	-2,831.2	4,684.9	0.00	0.00	0.00
12,000.0	90.00	322.82	7,420.0	3,812.3	-2,891.6	4,784.9	0.00	0.00	0.00
12,100.0	90.00	322.82	7,420.0	3,892.0	-2,952.1	4,884.9	0.00	0.00	0.00
12,200.0	90.00	322.82	7,420.0	3,971.7	-3,012.5	4,984.9	0.00	0.00	0.00
12,300.0	90.00	322.82	7,420.0	4,051.4	-3,072.9	5,084.9	0.00	0.00	0.00
12,400.0	90.00	322.82	7,420.0	4,131.0	-3,133.4	5,184.9	0.00	0.00	0.00
12,431.4	90.00	322.82	7,420.0	4,156.1	-3,152.4	5,216.3	0.00	0.00	0.00

4 1/2" - Fox Creek 4-27H (BHL)

Casing Points

Measured Depth (ft)	Vertical Depth (ft)	Name	Casing Diameter (")	Hole Diameter (")
1,500.0	1,500.0	9 5/8"	9-5/8	12-1/4
7,692.5	7,420.0	7"	7	8-3/4
12,431.4	7,420.0	4 1/2"	4-1/2	6-1/4

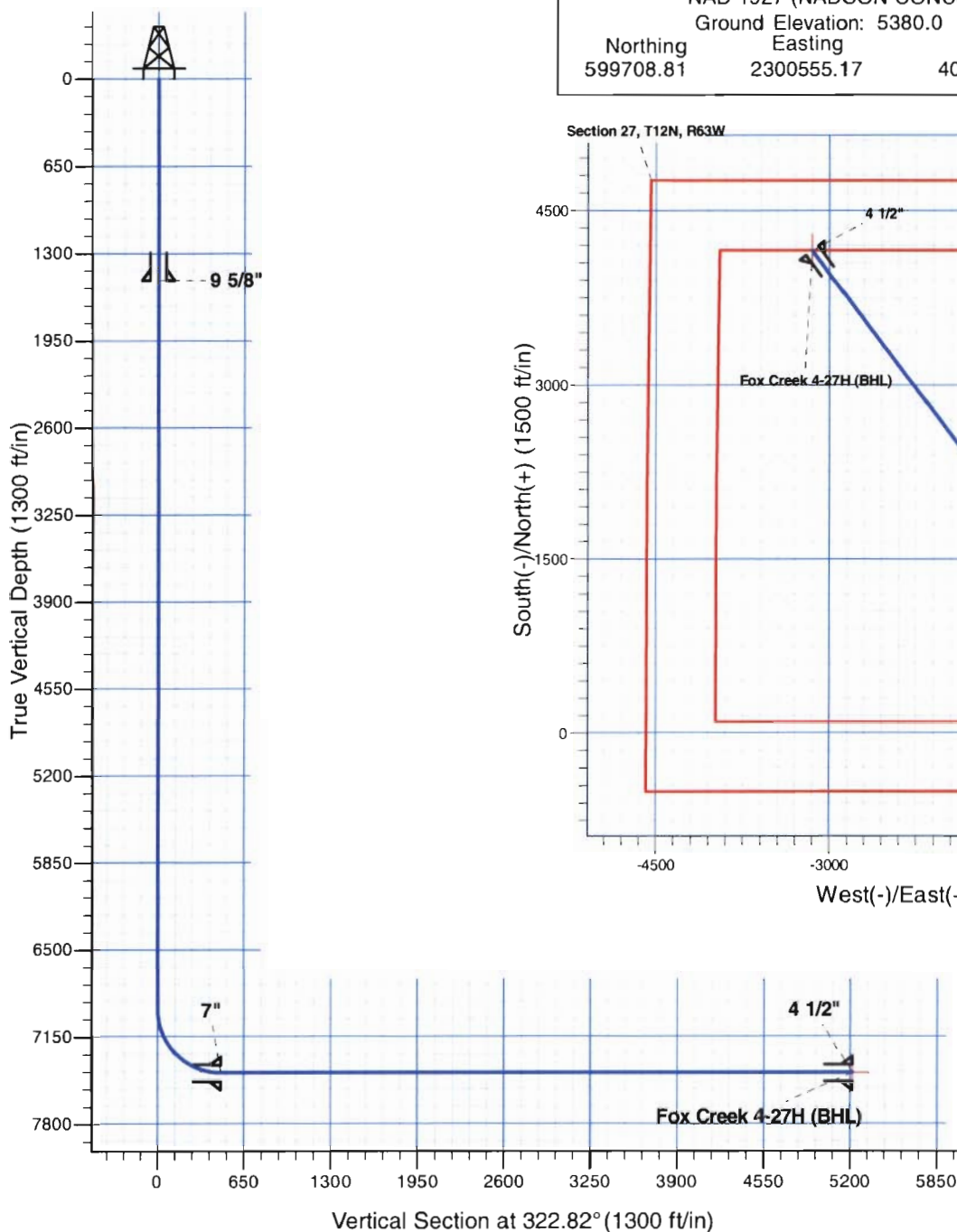
Fox Creek 4-27H

Section 27 T12N R63W

Weld County, CO



Surface Location				
NAD 1927 (NADCON CONUS) Colorado North 501				
Ground Elevation: 5380.0 RIG @ 5405.0ft (TBD)				
Northing	Easting	Latitude	Longitude	
599708.81	2300555.17	40° 58' 28.290 N	104° 24' 41.850 W	



T M
 Azimuths to True North
 Magnetic North: 8.87°
 Magnetic Field
 Strength: 53628.6snT
 Dip Angle: 67.63°
 Date: 1/22/2010
 Model: IGRF200510

Project: DJ - Hereford Ranch
 Site: Fox Creek 04-27H
 Well: Fox Creek 4-27H
 Plan: APD

SECTION DETAILS

Sec	MD	Inc	Azi	TVD	+N/-S	+E/-W	DLeg	TFace	VSec	Target
1	0.0	0.00	0.00	0.0	0.0	0.0	0.00	0.00	0.0	
2	6942.5	0.00	0.00	6942.5	0.0	0.0	0.00	0.00	0.0	
3	7692.5	90.00	322.82	7420.0	380.4	-288.5	12.00	322.82	477.5	
4	12431.4	90.00	322.82	7420.0	4156.1	-3152.4	0.00	0.00	5216.3	Fox Creek 4-27H (BHL)

TARGET DETAILS

Name	TVD	+N/-S	+E/-W	Northing	Easting	Latitude	Longitude	Shape Point
Fox Creek 4-27H (BHL)	7420.0	4156.1	-3152.4	603825.85	2297352.04	40° 59' 9.352 N	104° 25' 22.951 W	