

EOG RESOURCES, INC.

FOX CREEK #04-27H

LOCATED IN WELD COUNTY, COLORADO

SECTION 27, T12N, R63W, 6th P.M.

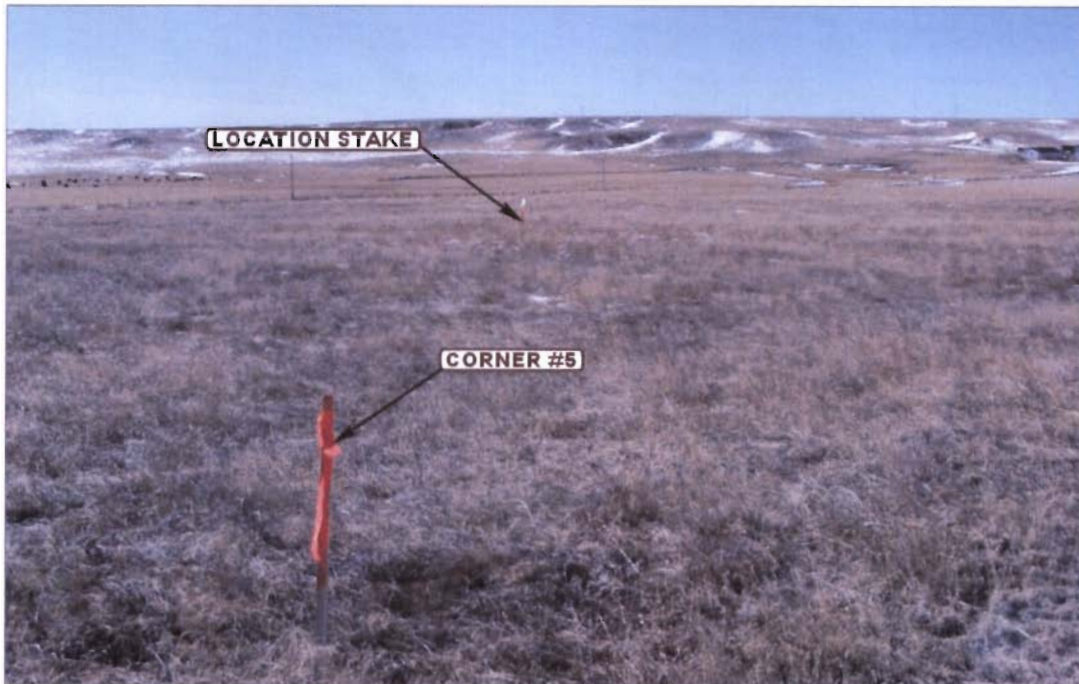


PHOTO: VIEW FROM CORNER #5 TO LOCATION STAKE

CAMERA ANGLE: SOUTHWESTERLY



PHOTO: VIEW FROM BEGINNING OF PROPOSED ACCESS

CAMERA ANGLE: SOUTHEASTERLY



UELS

Utah Engineering & Land Surveying

85 South 200 East Vernal, Utah 84078
435-789-1017 FAX (435) 789-1813

LOCATION PHOTOS

01 18 10
MONTH DAY YEAR

PHOTO
P 1

TAKEN BY: B.H.

DRAWN BY: J.H.

REVISED: 00-00-00

EOG RESOURCES, INC.

FOX CREEK #04-27H

LOCATED IN WELD COUNTY, COLORADO
SECTION 27, T12N, R63W, 6th P.M.



PHOTO: VIEW OF LOCATION STAKE

CAMERA ANGLE: NORTHERLY



PHOTO: VIEW OF LOCATION STAKE

CAMERA ANGLE: EASTERLY



Utah Engineering & Land Surveying
85 South 200 East Vernal, Utah 84078
435-789-1017 FAX (435) 789-1813

LOCATION PHOTOS

01 18 10
MONTH DAY YEAR

TAKEN BY: B.H.

DRAWN BY: J.H.

REVISED: 00-00-00

PHOTO
P 2

EOG RESOURCES, INC.

FOX CREEK #04-27H

LOCATED IN WELD COUNTY, COLORADO

SECTION 27, T12N, R63W, 6th P.M.



PHOTO: VIEW OF LOCATION STAKE

CAMERA ANGLE: SOUTHERLY



PHOTO: VIEW OF LOCATION STAKE

CAMERA ANGLE: WESTERLY



UELS

Uintah Engineering & Land Surveying

85 South 200 East Vernal, Utah 84078
435-789-1017 FAX (435) 789-1813

LOCATION PHOTOS

01 18 10
MONTH DAY YEAR

PHOTO

P 3

TAKEN BY: B.H.

DRAWN BY: J.H.

REVISED: 00-00-00