

# BLANCO

*Geological Services LLC*

Scale 1:240 (5"=100') Imperial

Well Name: Lorencito 12-22-34-66

Location: NW/SW Sec 22 T34S R66W

Licence Number: 05-071-08513-00

Spud Date: 10/09/05

Surface Coordinates: 1830' FSL 556' FWL

Region: Purgatoire River

Drilling Completed: 10/10/05

## Bottom Hole Coordinates:

Ground Elevation (ft): 7491'

K.B. Elevation (ft): 7495'

Logged Interval (ft): 385'

To: 2035'

Total Depth (ft): 2035'

Formation: Raton/Vermejo/Trinidad

Type of Drilling Fluid: Aerated Water

Printed by MUD.LOG from WellSight Systems 1-800-447-1534 [www.WellSight.com](http://www.WellSight.com)

## OPERATOR

Company: Pioneer Natural Resources USA Inc

Address: 1401 17th Street Suite 1200

Denver Colorado 80202

## GEOLOGIST

Name: Kristopher Alworth / Nicholas Gonzales

Company: BLANCO Geological Services LLC

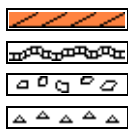
Address: PO Box 865

Trinidad, Colorado 81082

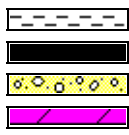
## Comments

8 5/8" Surface Casing set to 260.10'

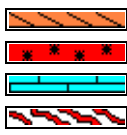
## ROCK TYPES



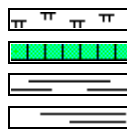
Anhy  
Bent  
Brec  
Cht



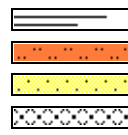
Clyst  
Coal  
Congl  
Dol



Gyp  
Igne  
Lmst  
Meta



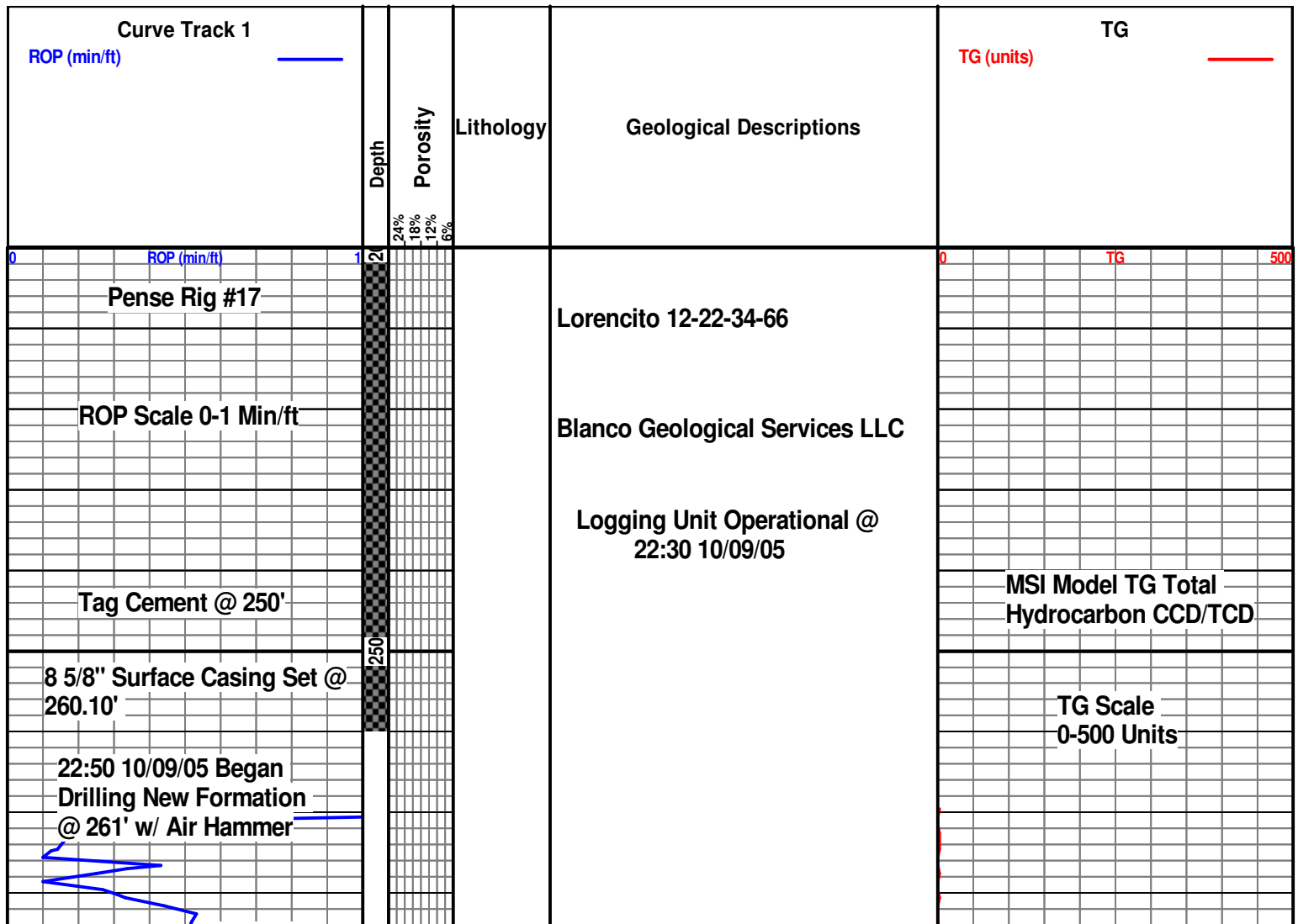
Mrlst  
Salt  
Shale  
Shcol



Shgy  
Sltst  
Ss  
Till

<b>BS</b>	<b>Boundst</b>
<b>C</b>	<b>Chalky</b>
<b>CX</b>	<b>CryxIn</b>
<b>E</b>	<b>Earthy</b>
<b>FX</b>	<b>FinexIn</b>
<b>GS</b>	<b>Grainst</b>
<b>L</b>	<b>Lithogr</b>
<b>MX</b>	<b>MicroxIn</b>
<b>MS</b>	<b>Mudst</b>
<b>PS</b>	<b>Packst</b>
<b>WS</b>	<b>Wackest</b>

Rft  
Sidewall  
Cv



23:00 @ 285

# Raton Formation

Began Sampling @ 335'

COAL, black, firm, sub vitreous dull, smooth, blocky

SHALE, grey, soft, platey, smooth, dull sub waxy, COAL STRINGERS

Line Test

SHALE, grey, soft, platey, smooth, dull sub waxy

SANDSTONE, clear, mg, sub rounded, well sorted, mod consolidated

COAL, black, firm, sub vitreous dull, smooth, blocky

SHALE, grey, soft, platey, smooth, dull sub waxy

SHALE, grey, soft, platey, smooth, dull sub waxy

SANDSTONE, clear white grey, vfg-fg, sub rounded, well sorted, well consolidated, calcareous

TG

500

SHALE, grey, firm, sub platey sub blocky, mod smooth, dull, SANDSTONE INTERBEDDED

SANDSTONE, clear white grey, vfg-fg, sub rounded, well sorted, well consolidated, calcareous

SHALE, grey, soft, sub platey, smooth, sub waxy, COAL STRINGERS

SHALE, brown, firm soft, sub platey sub blocky, gritty, dull, SANDSTONE INTERBEDDED, COAL STRINGERS

CG

COAL, black, firm, sub vitreous, smooth, trace cleated

SANDSTONE, clear white, fg-mg, sub angular sub rounded, mod poorly sorted, mod consolidated, calcareous

SHALE, brown, firm soft, sub platey sub blocky, gritty, dull, SANDSTONE INTERBEDDED, COAL STRINGERS

CG

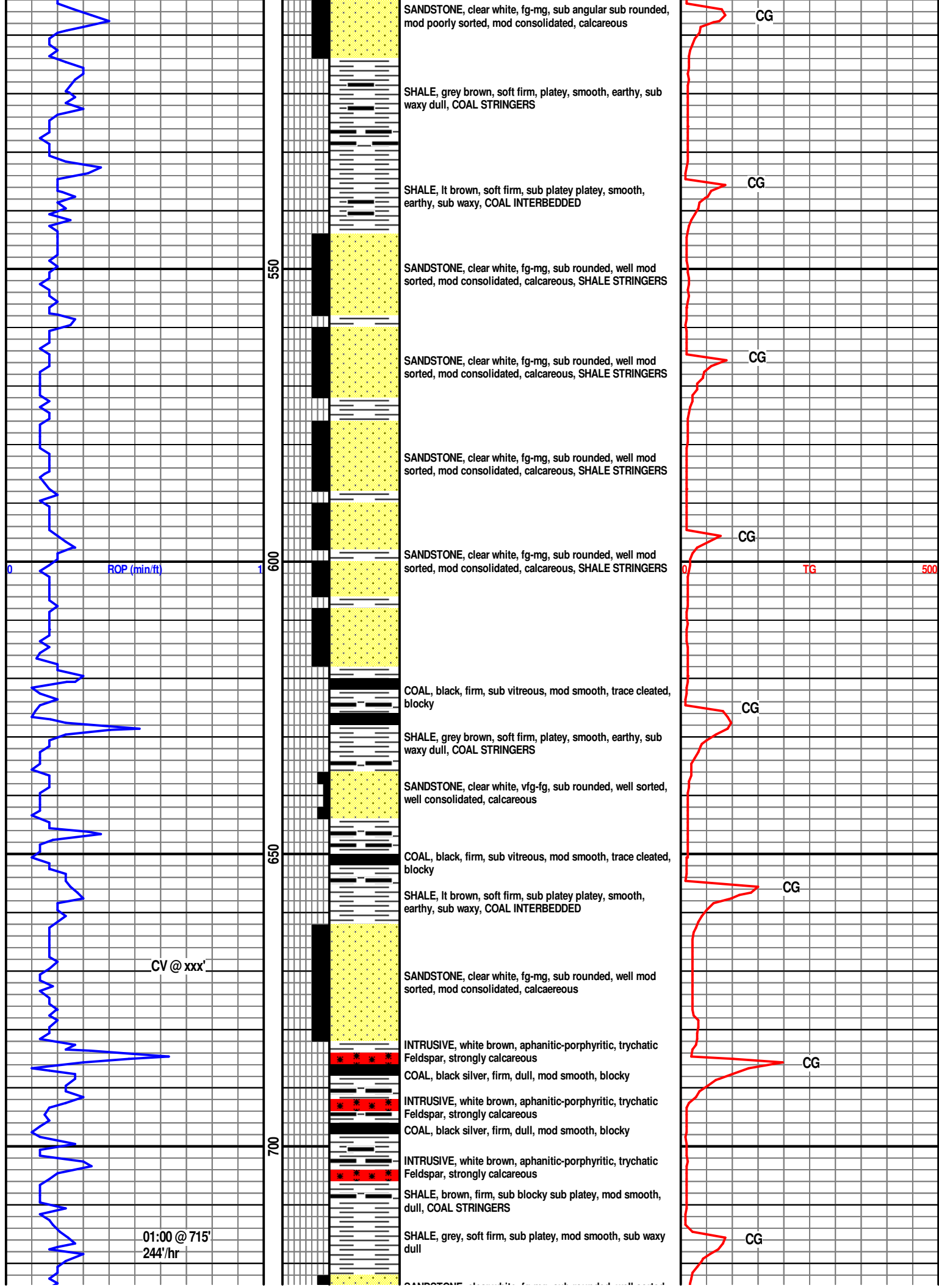
SANDSTONE, clear white, fg-mg, sub angular sub rounded, mod poorly sorted, mod consolidated, calcareous

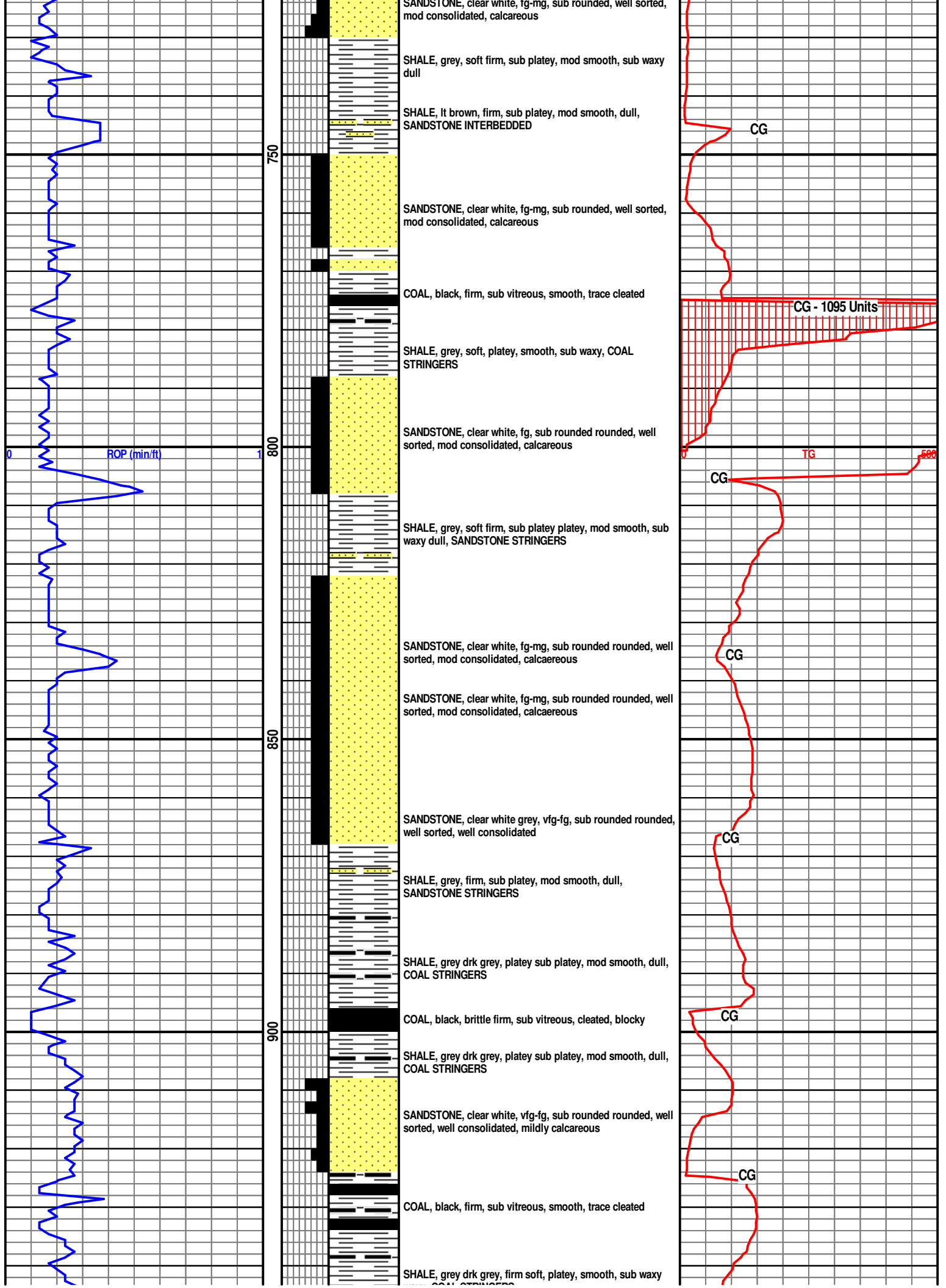
SANDSTONE, clear white, fg-mg, sub angular sub rounded, mod poorly sorted, mod consolidated, calcareous

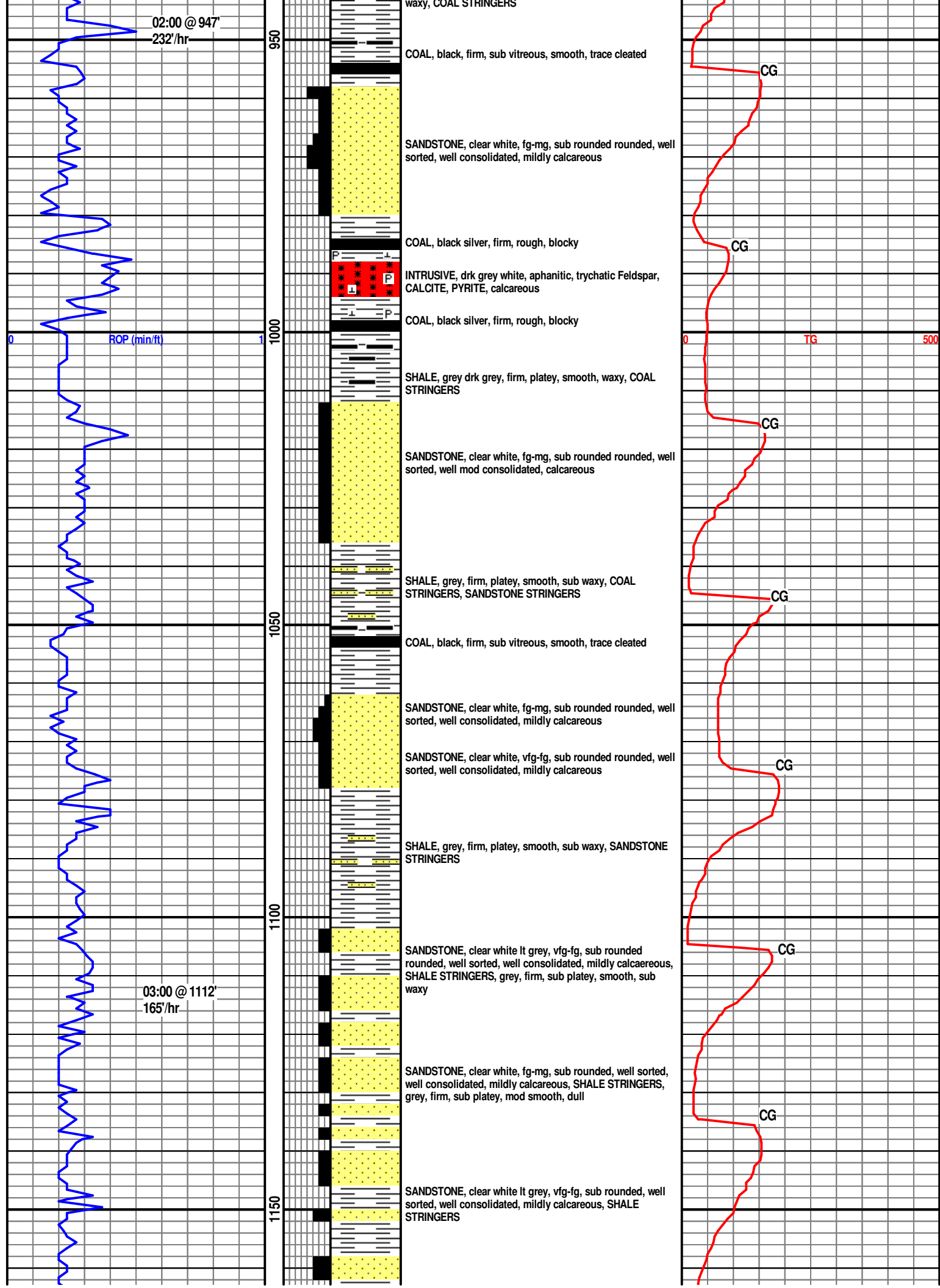
SHALE, brown, firm soft, sub platey sub blocky, gritty, dull, SANDSTONE INTERBEDDED, COAL STRINGERS

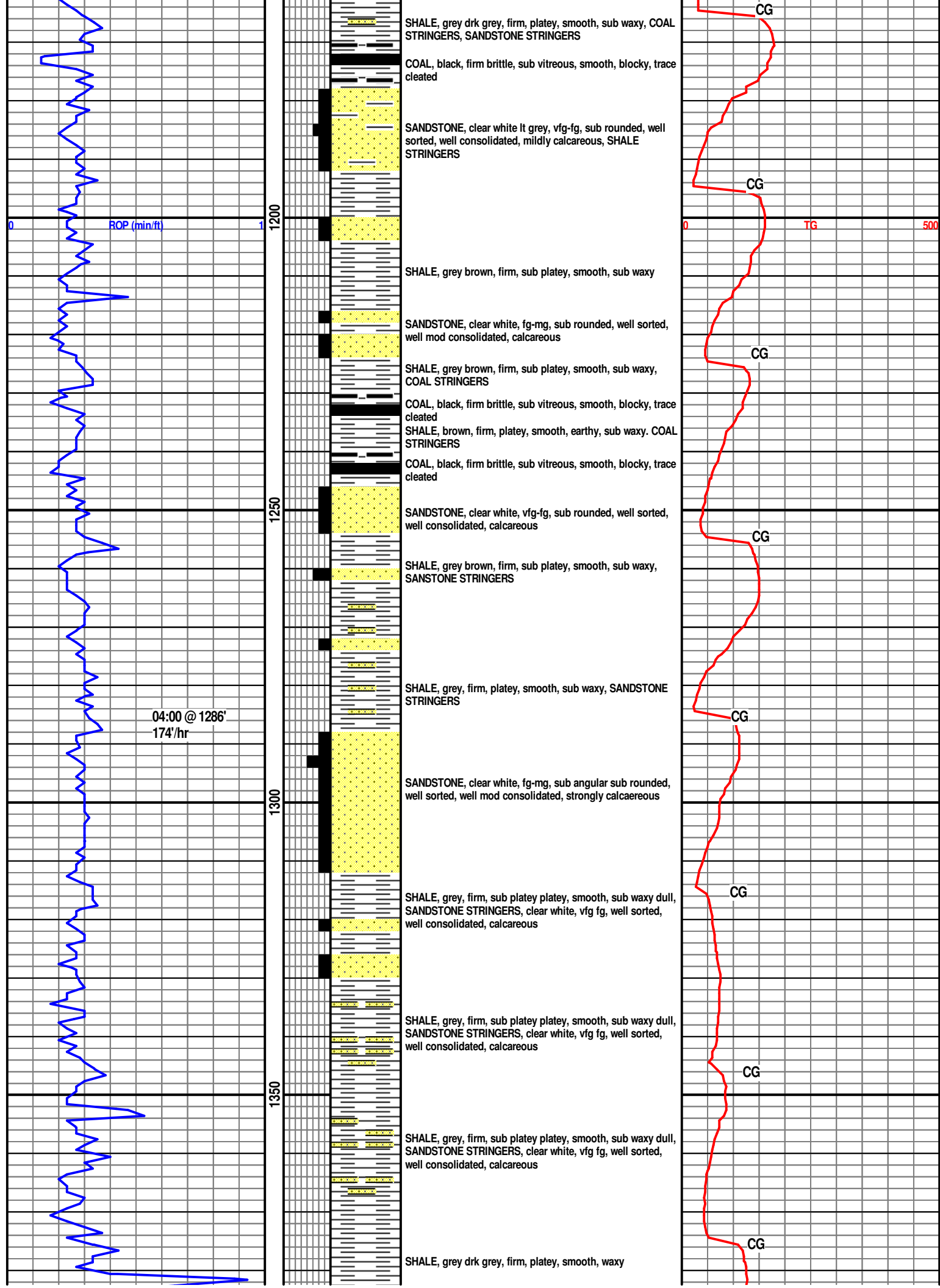
ROP (min/ft)

00:00 @ 471'  
186'/hr

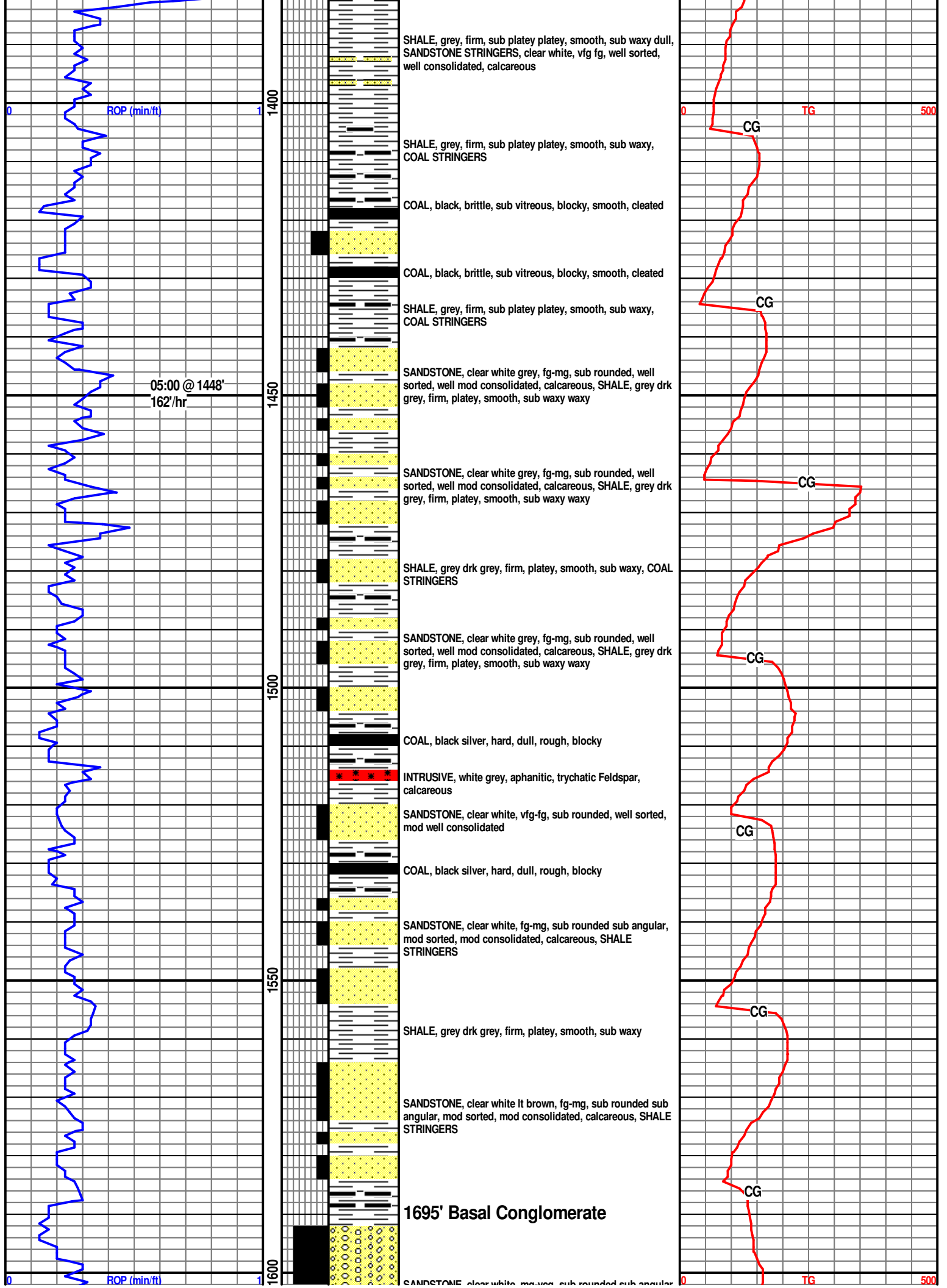




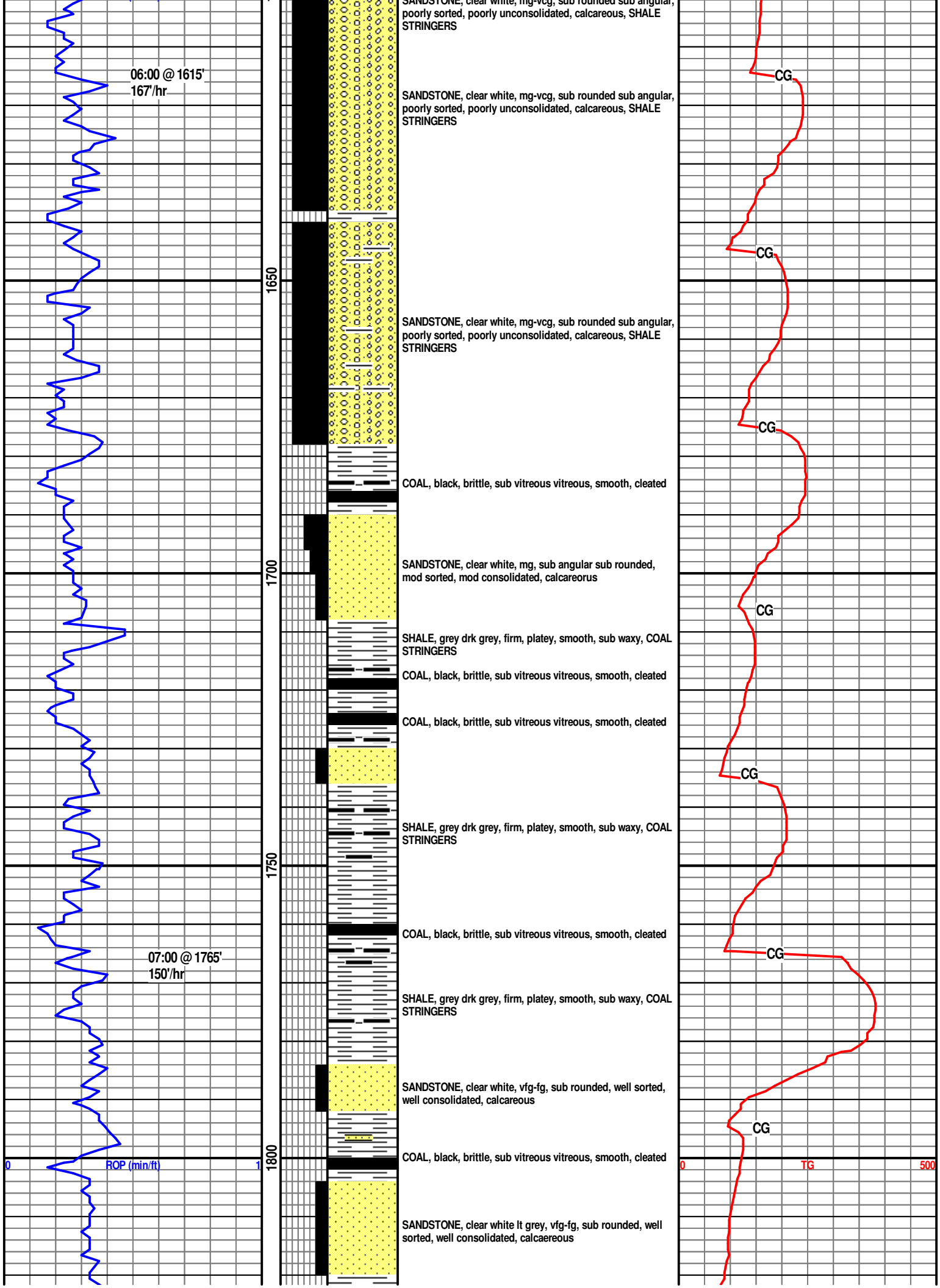


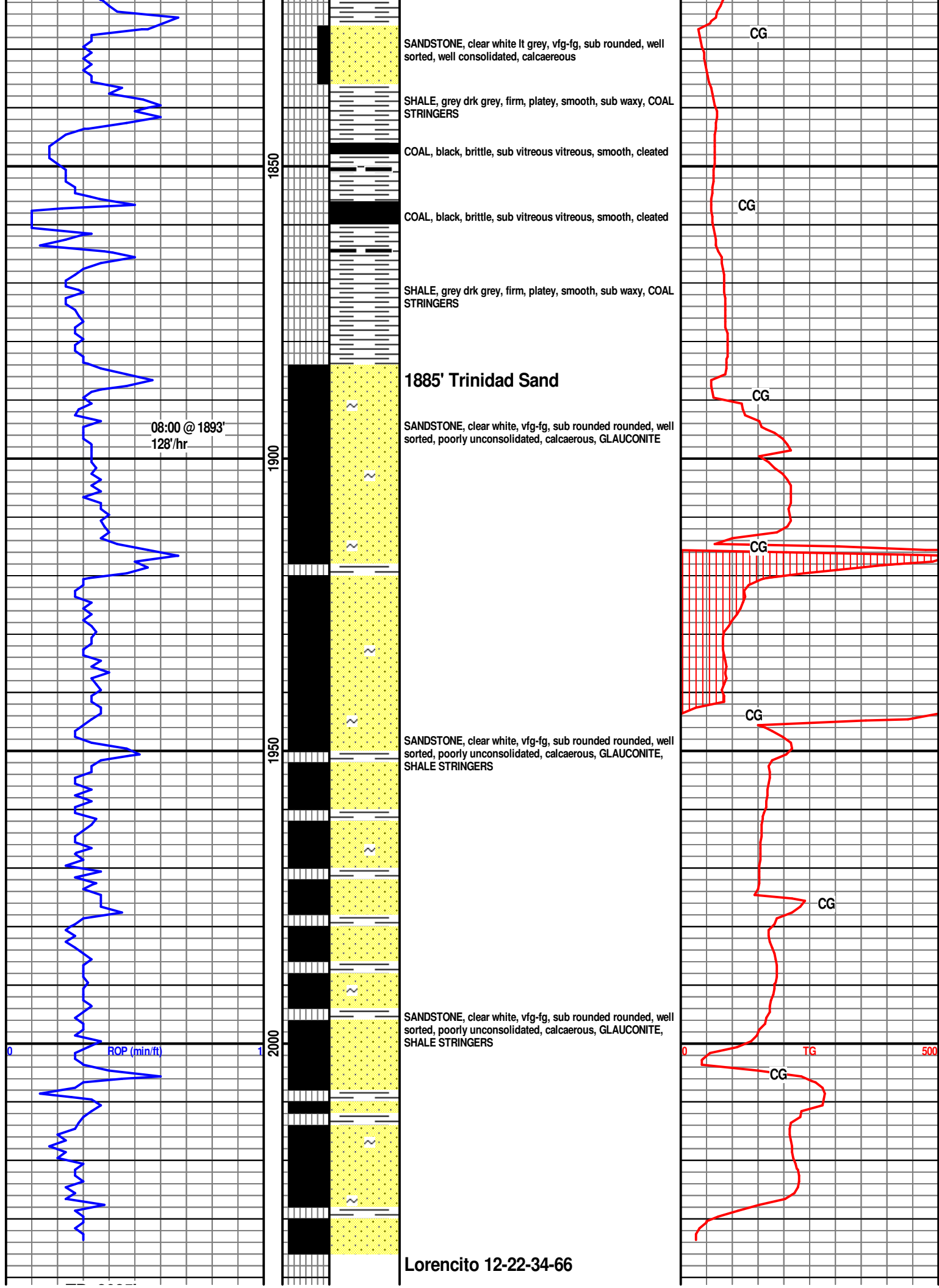












[illegible]