



**SUPERIOR**  
Black Lick, Pa.  
Mercer, Pa.  
Wooster, Oh.  
Cleveland, Ok.  
Trinidad, Co.

## DUAL INDUCTION LOG

Company XTO Energy Inc.  
Well Golden Eagle 30-12  
Field Purgatoire River  
County Las Animas State Colorado

Location: API # : 05 071 09239 00

1704' FSL & 734' FWL

SEC 30 TWP 33S RGE 67W

Permanent Datum Ground Level Elevation 7888'  
Log Measured From Ground Level  
Drilling Measured From Ground Level

Other Services  
CDL  
NEUTRON  
Elevation  
K.B. -----  
D.F. -----  
G.L. 7888'

Date 1-30-08

Run Number One

Depth Driller 2400'

Depth Logger 2403'

Bottom Logged Interval 2401'

Top Log Interval Surface Casing

Casing Driller 8 5/8" @ 495'

Casing Logger 495'

Bit Size 7 7/8"

Type Fluid in Hole Water

Density / Viscosity ///

pH / Fluid Loss ///

Source of Sample ///

Rm @ Meas. Temp ///

Rmf @ Meas. Temp ///

Rmc @ Meas. Temp ///

Source of Rmf / Rmc ///

Rm @ BHT ///

Time Circulation Stopped 5:30 P.M.

Time Logger on Bottom 9:00 P.M.

Maximum Recorded Temperature 112 DEG F

Equipment Number T697

Location Trinidad

Recorded By J. Cappellucci

Witnessed By Mr. Dalton King

<<< Fold Here >>>

All interpretations are opinions based on inferences from electrical or other measurements and we cannot and do not guarantee the accuracy or correctness of any interpretation, and we shall not, except in the case of gross or willful negligence on our part, be liable or responsible for any loss, costs, damages, or expenses incurred or sustained by anyone resulting from any interpretation made by any of our officers, agents or employees. These interpretations are also subject to our general terms and conditions set out in our current Price Schedule.

### Comments

Well Directions:  
Hwy 12 , second entrance to Bosque, across tracks, stay left at Y,  
to Cerilla Canyon, through green gate, take first right, GE 30-12  
is the third drive through location.



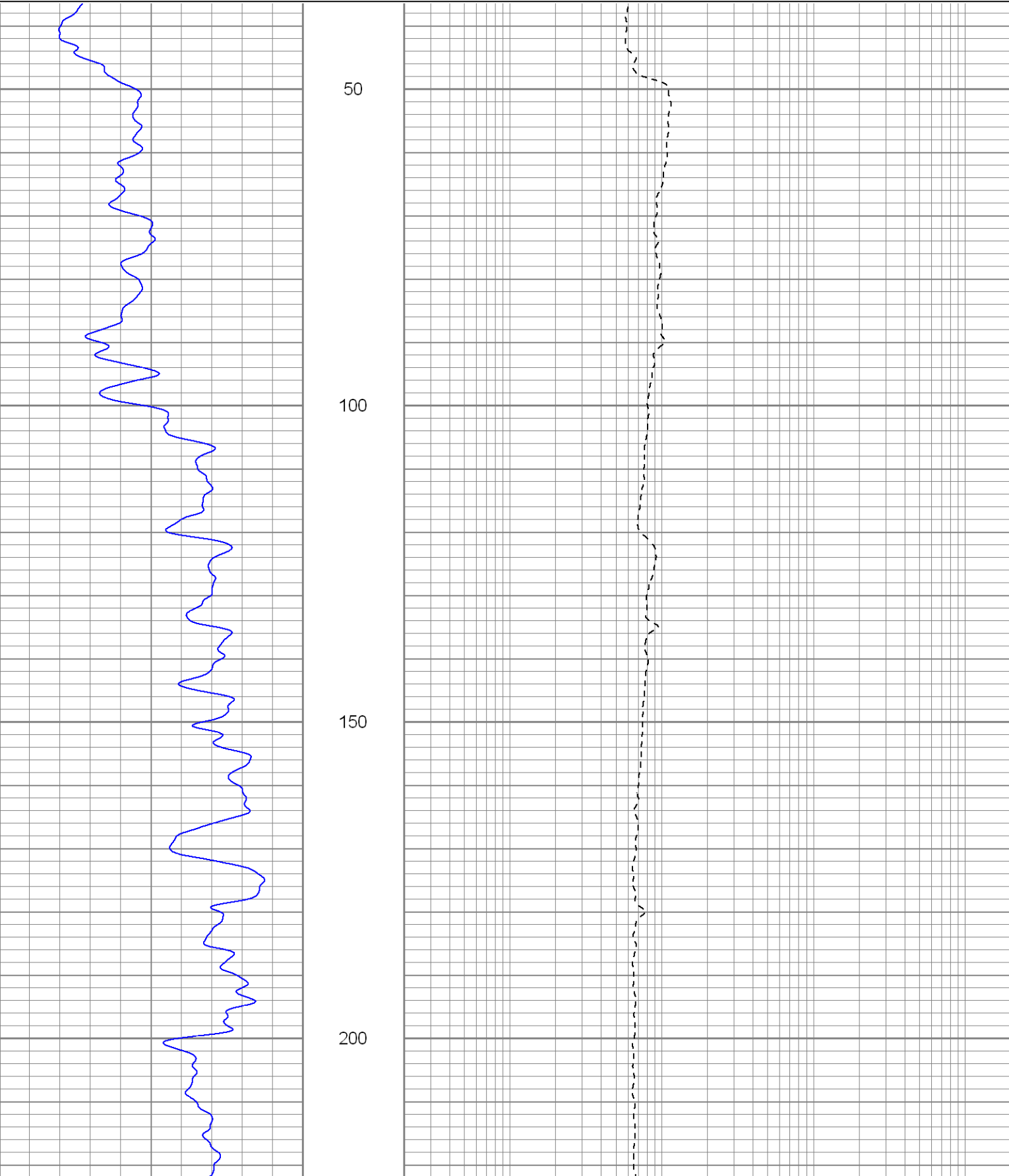
**SUPERIOR**  
Black Lick, Pa.  
Mercer, Pa.  
Wooster, Oh.  
Cleveland, Ok.  
Trinidad, Co.

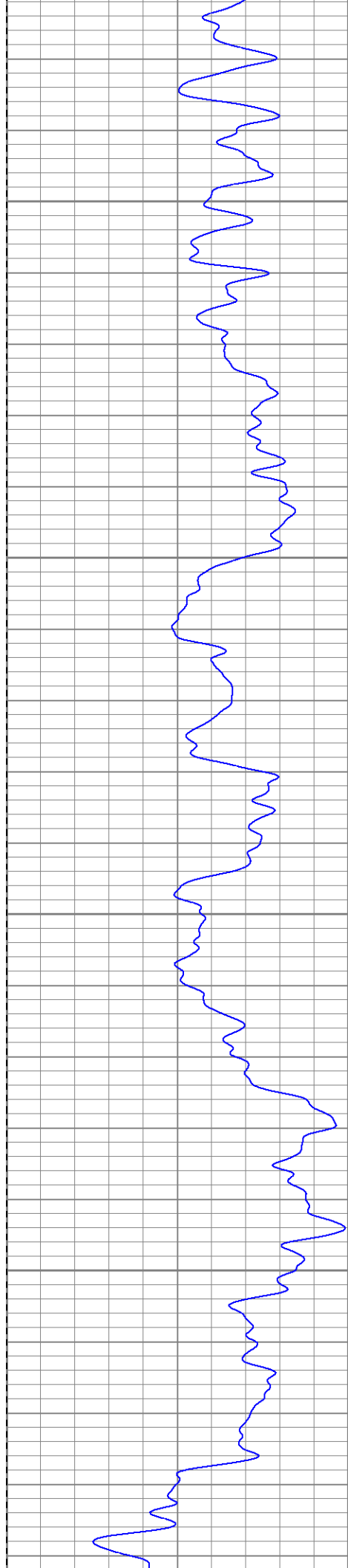
# Main Pass

Database File: xtoge3012.db  
Dataset Pathname: pass2.1  
Presentation Format: dil  
Dataset Creation: Wed Jan 30 23:04:39 2008 by Calc Open-Cased 070814  
Charted by: Depth in Feet scaled 1:240

0	GR (GAPI)	200
-200	SP (mV)	0

0.2	RILM (Ohm-m)	2000
0.2	RILD (Ohm-m)	2000
0.2	RLL3 (Ohm-m)	2000



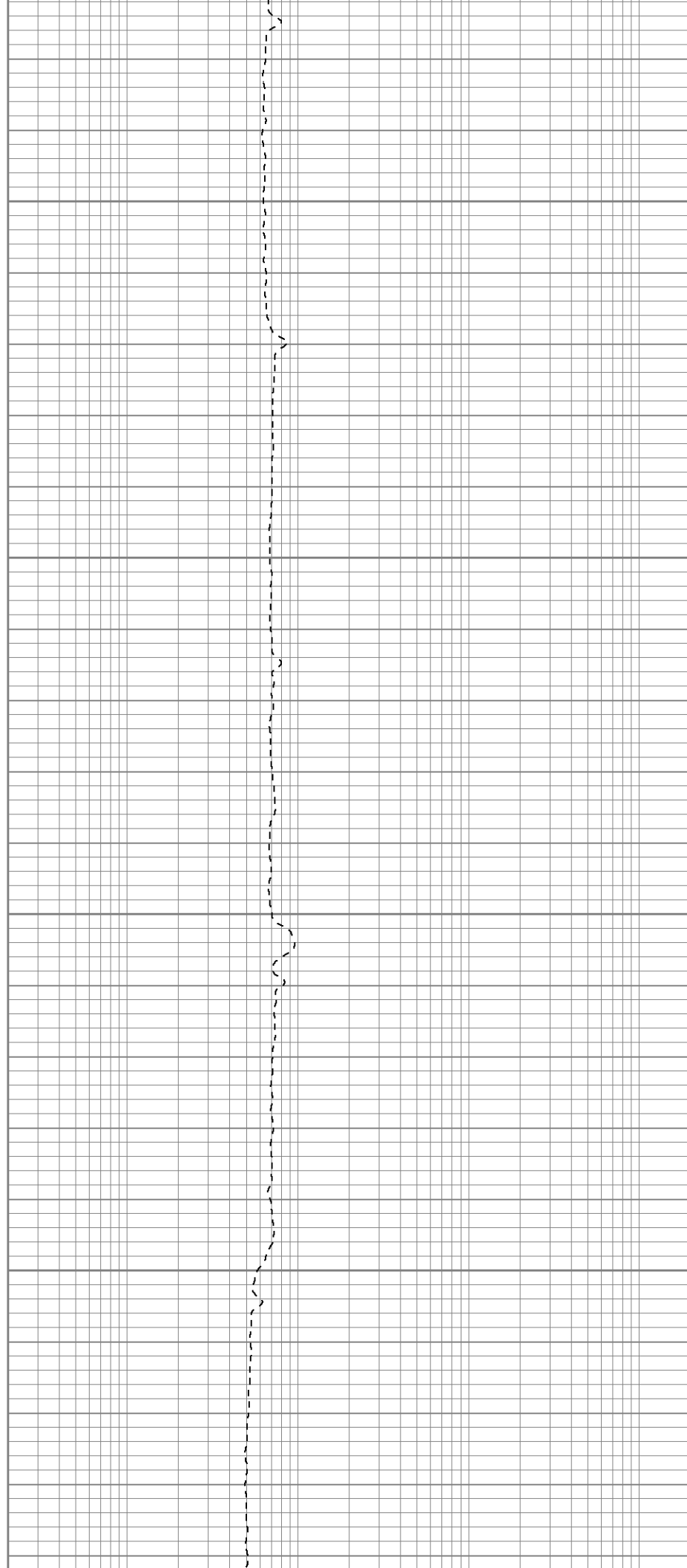


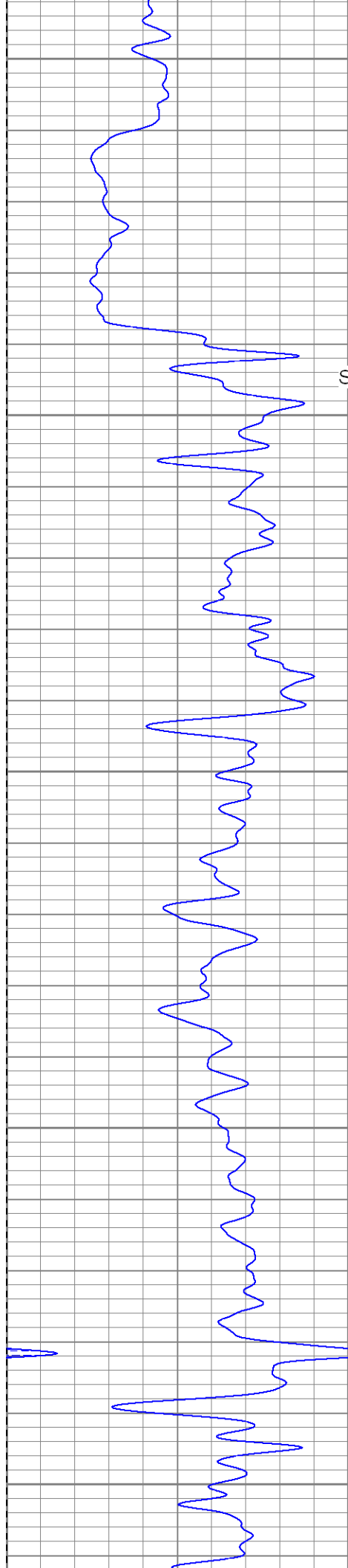
250

300

350

400





Surface Casing

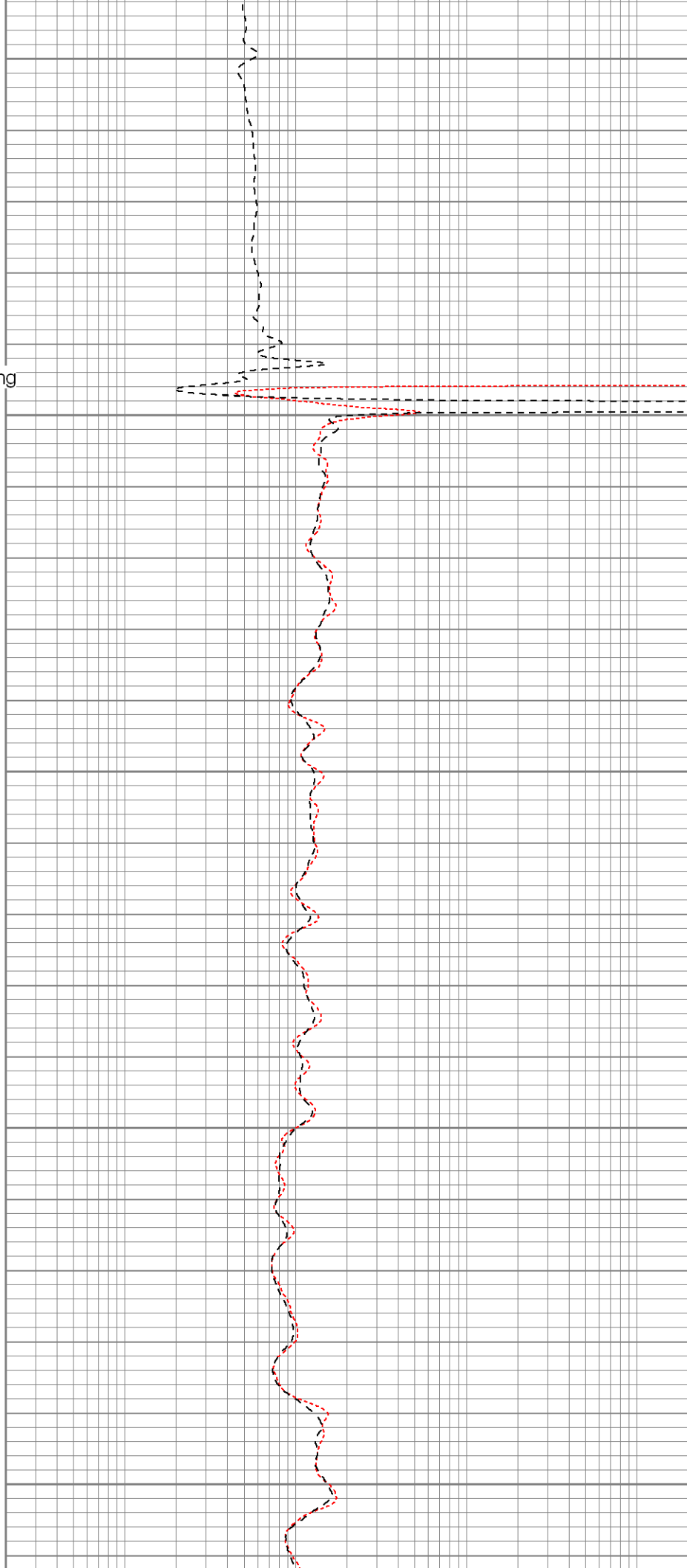
450

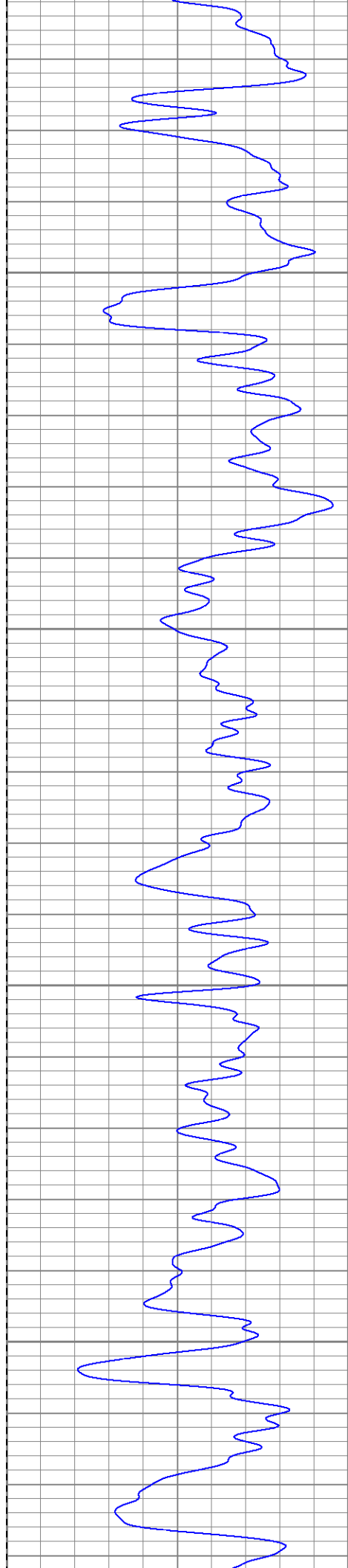
500

550

600

650



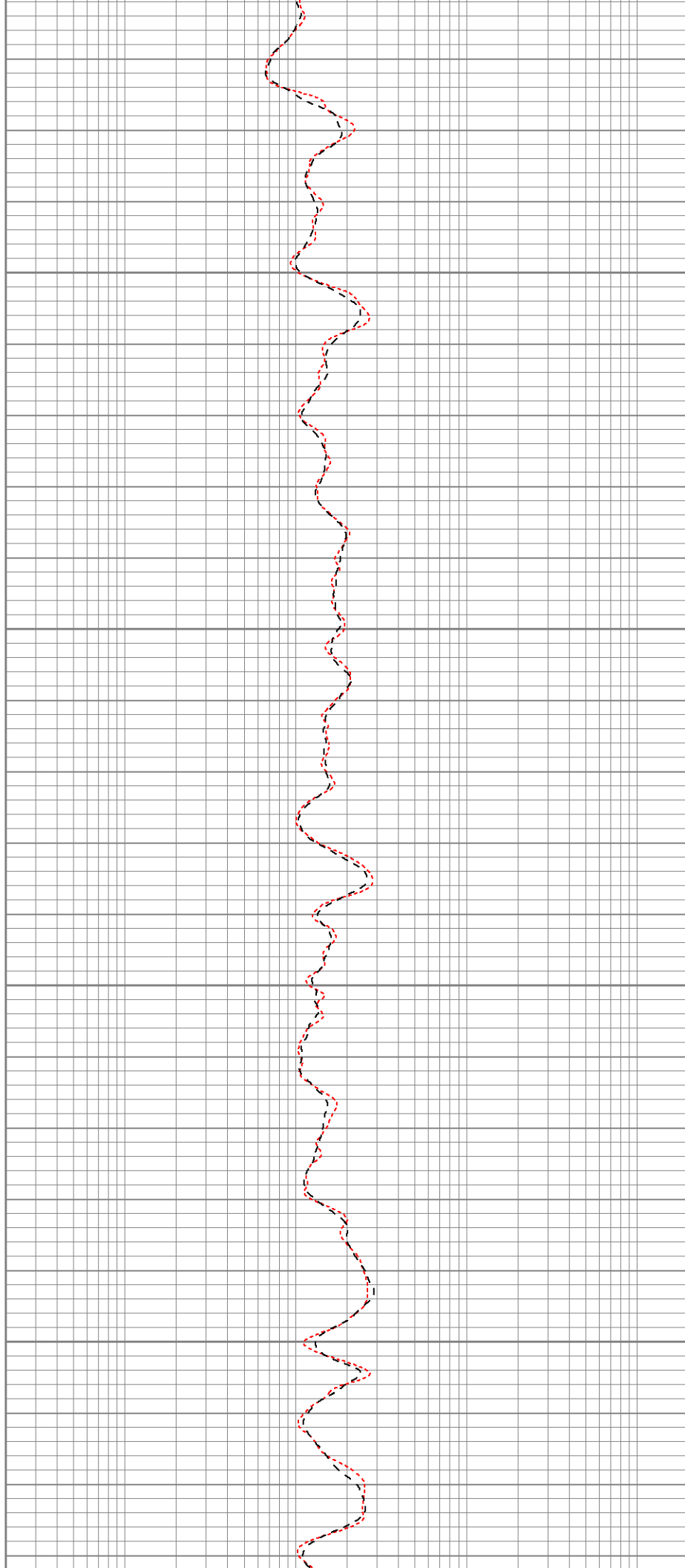


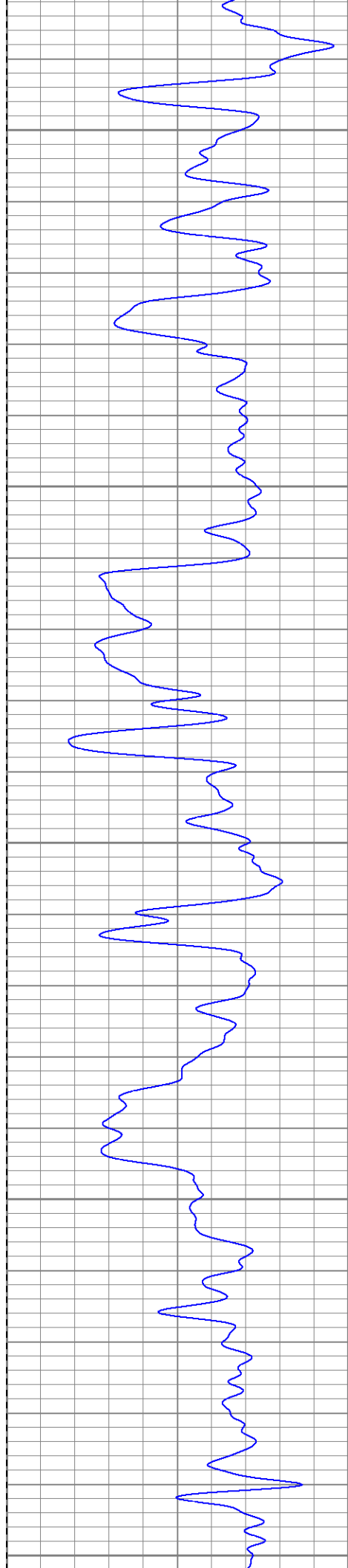
700

750

800

850





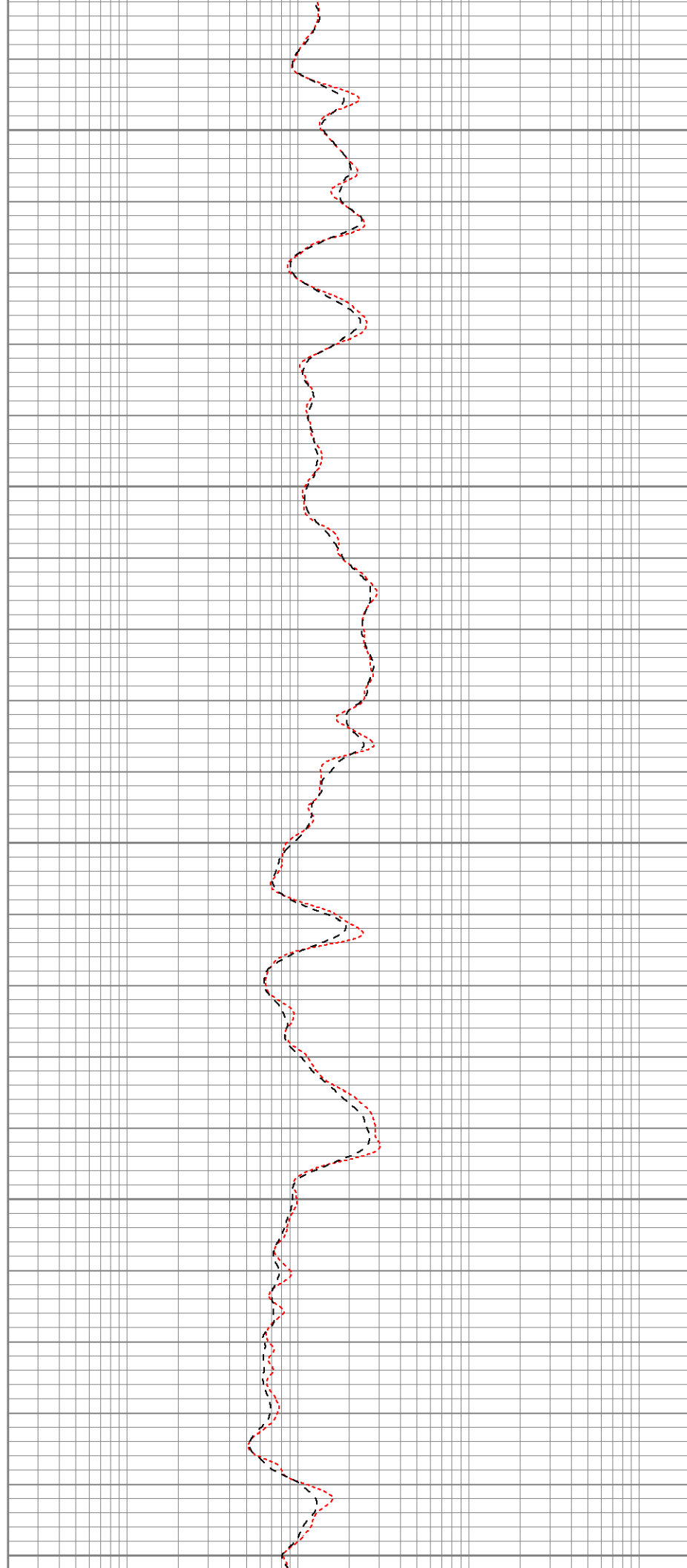
900

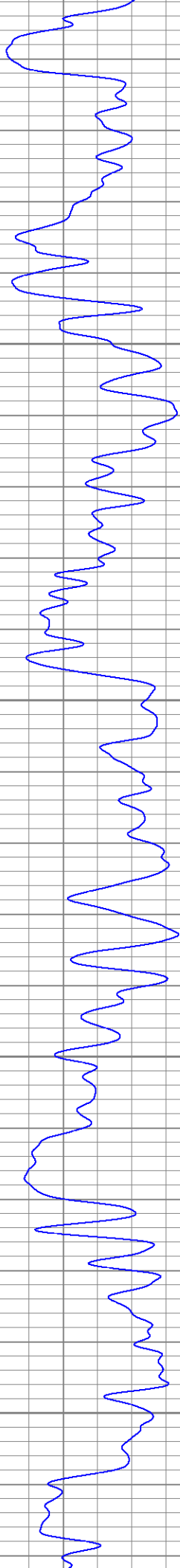
950

1000

1050

1100





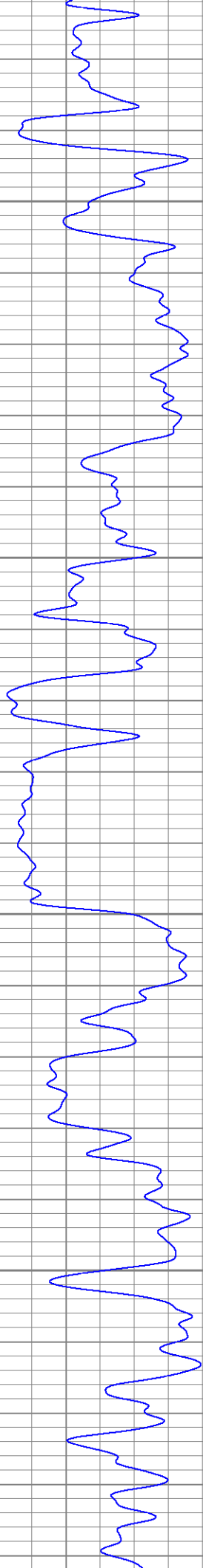
1150

1200

1250

1300



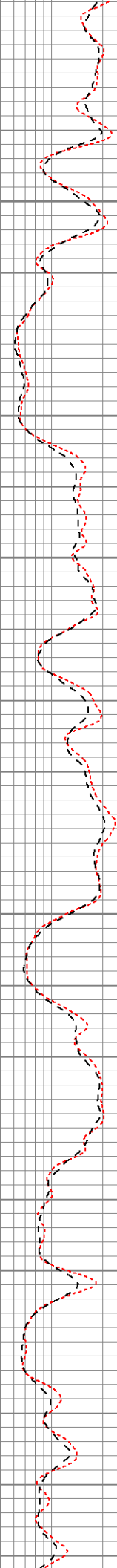


1350

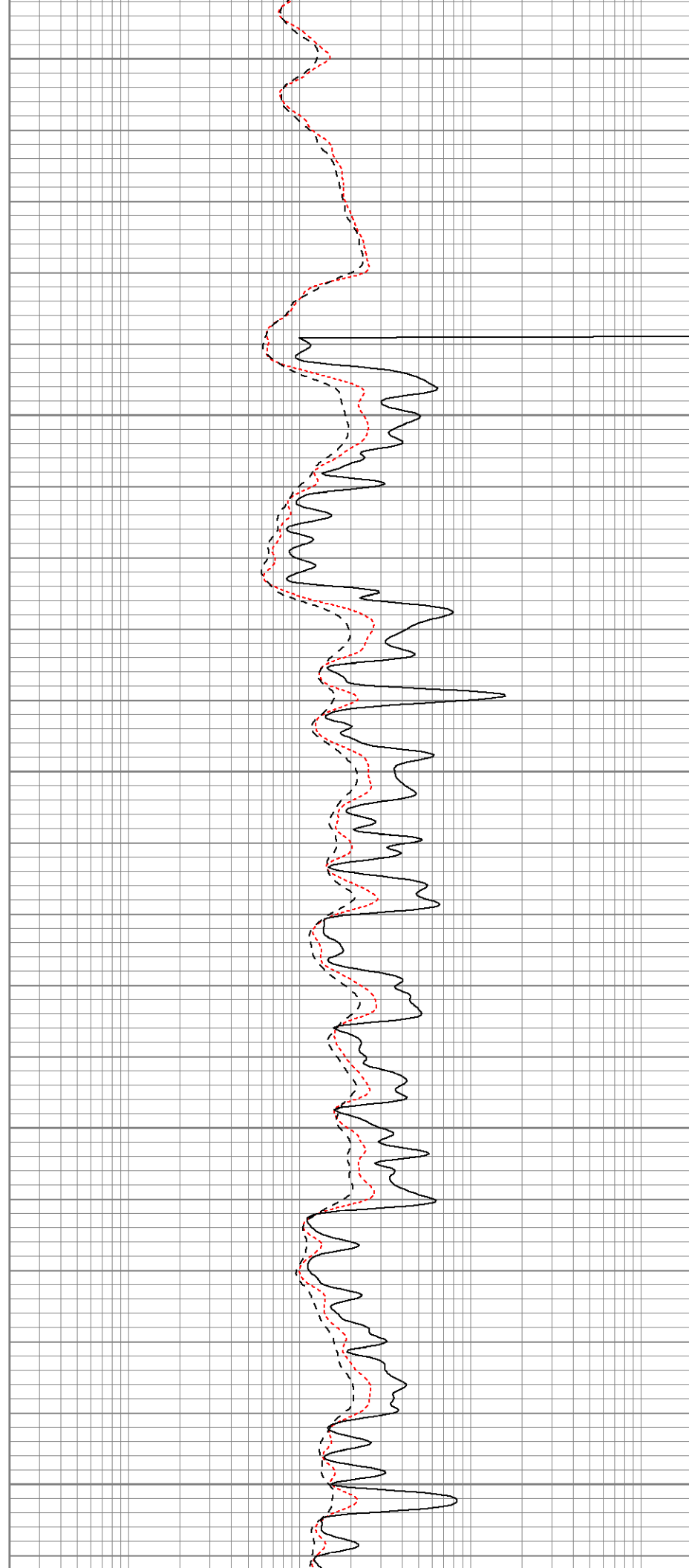
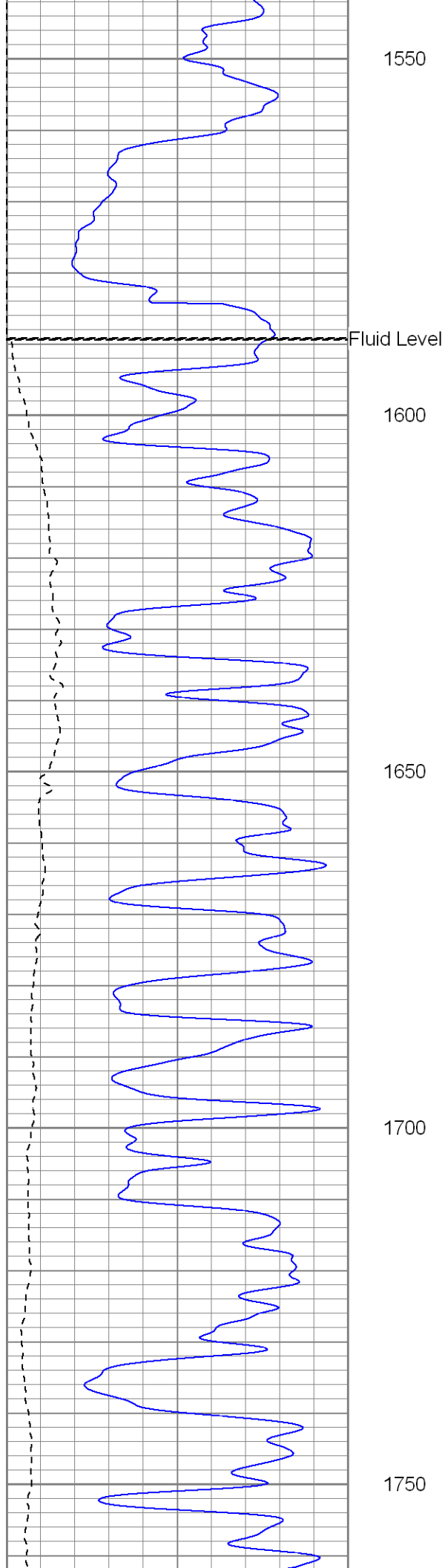
1400

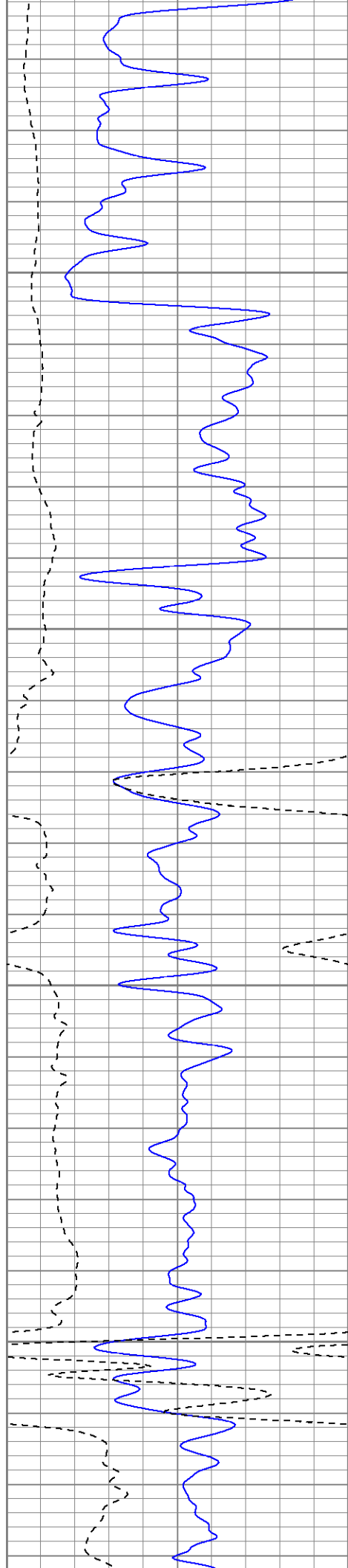
1450

1500







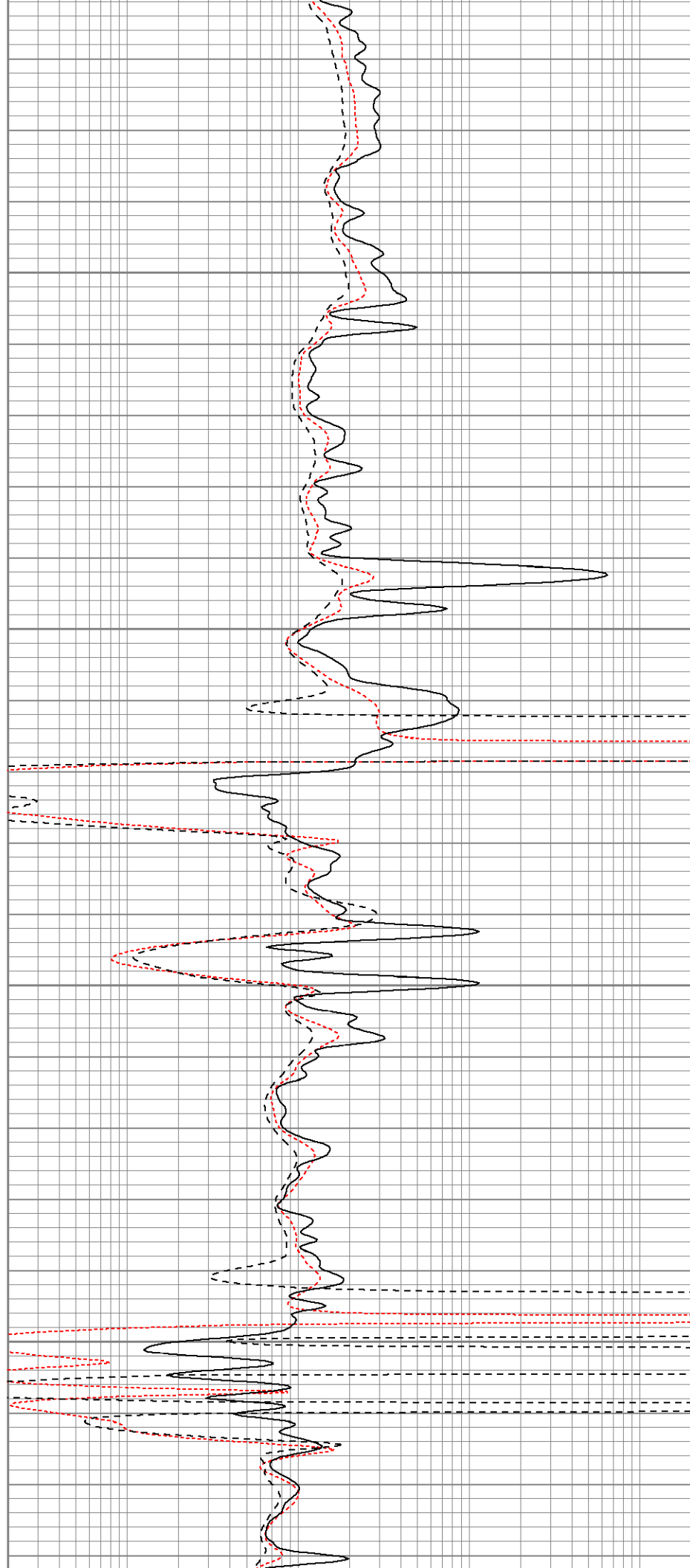


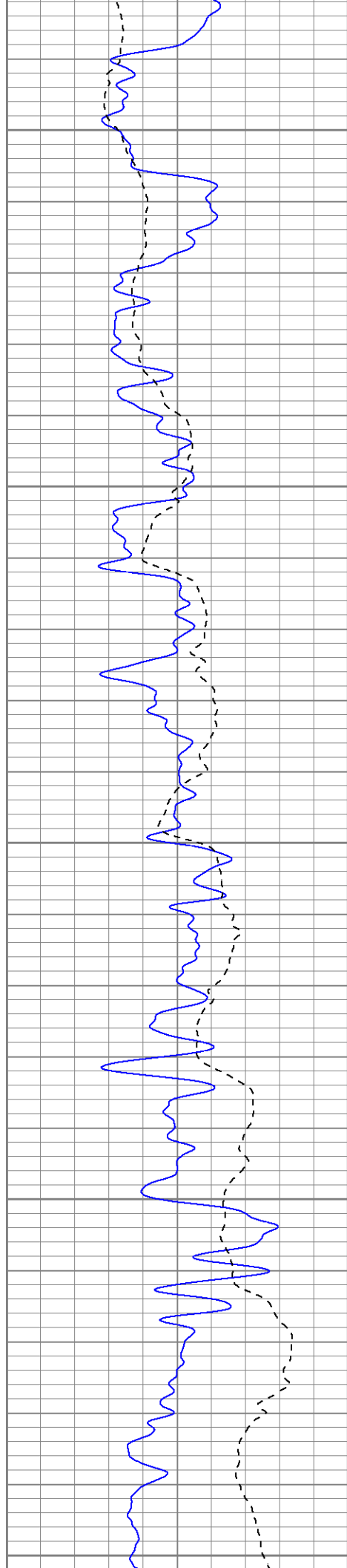
1800

1850

1900

1950





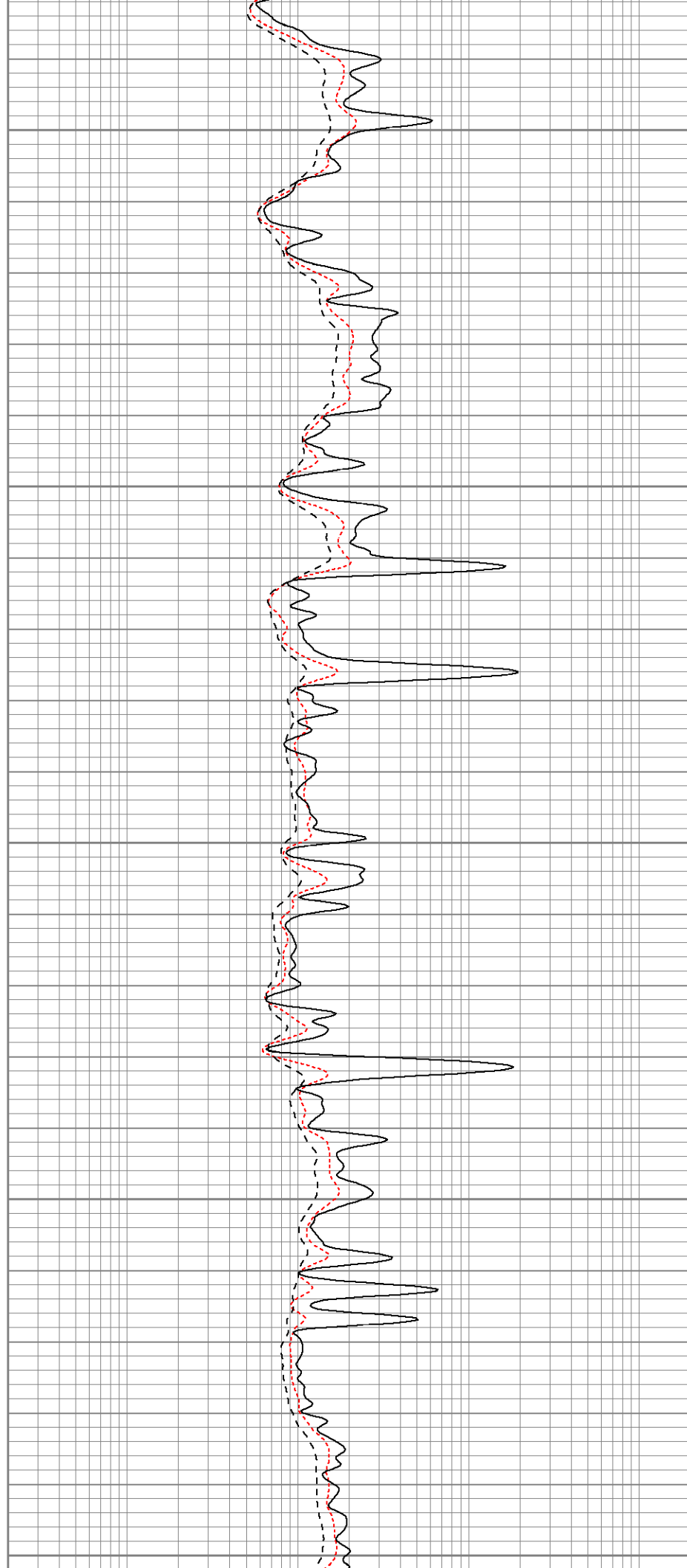
2000

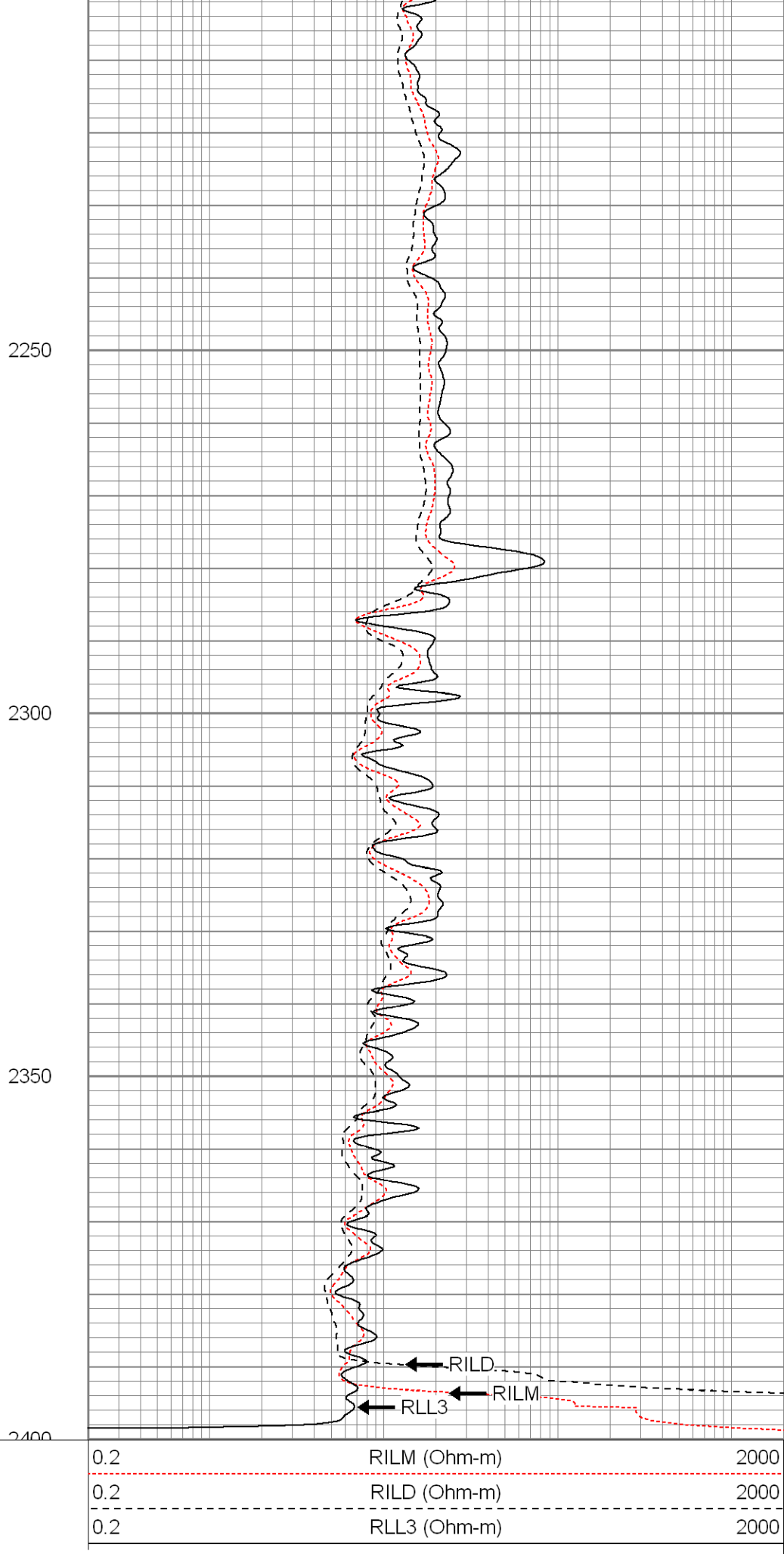
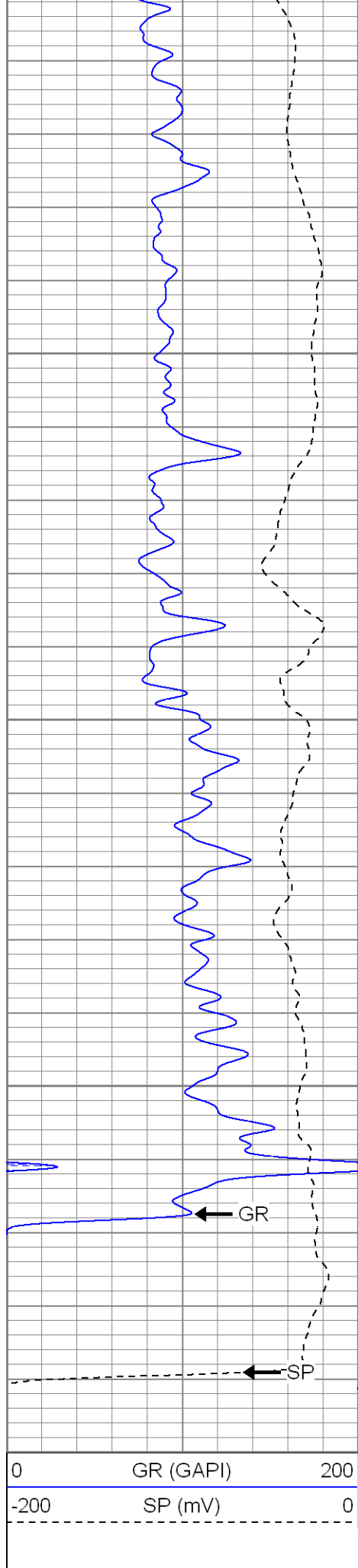
2050

2100

2150

2200







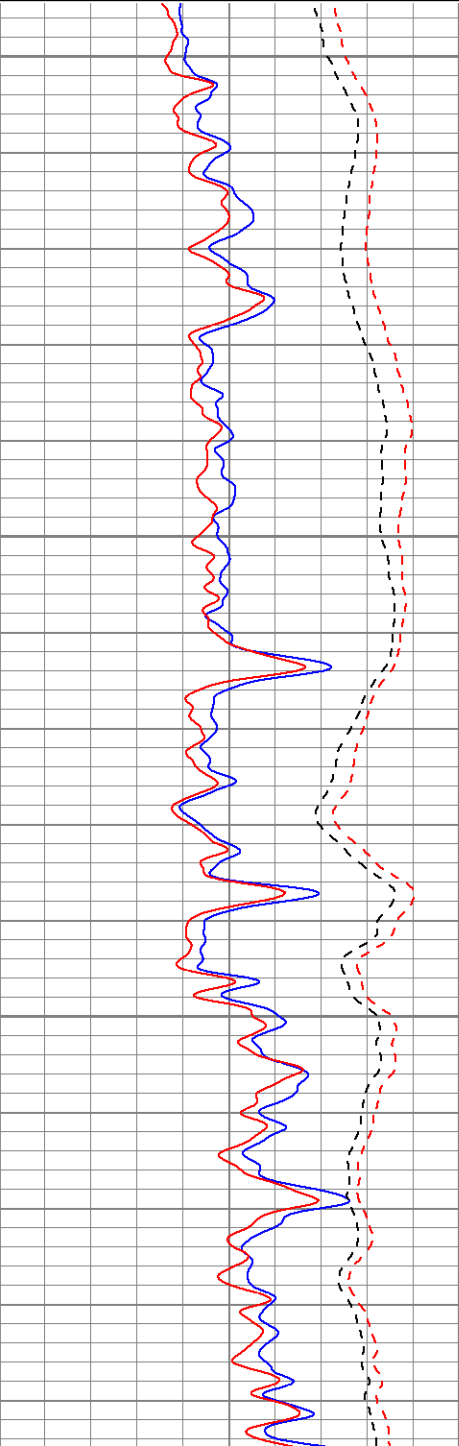
SUPERIOR  
Black Lick, Pa.  
Mercer, Pa.  
Wooster, Oh.  
Cleveland, Ok.  
Trinidad, Co.

# Repeat Pass

Database File: xtoge3012.db  
Dataset Pathname: pass1.1  
Presentation Format: dil  
Dataset Creation: Wed Jan 30 22:02:32 2008 by Calc Open-Cased 070814  
Charted by: Depth in Feet scaled 1:240

0	GR (GAPI)	200
-200	SP (mV)	0
0	GR-repeat (GAPI)	200
-200	SP-repeat (mV)	0

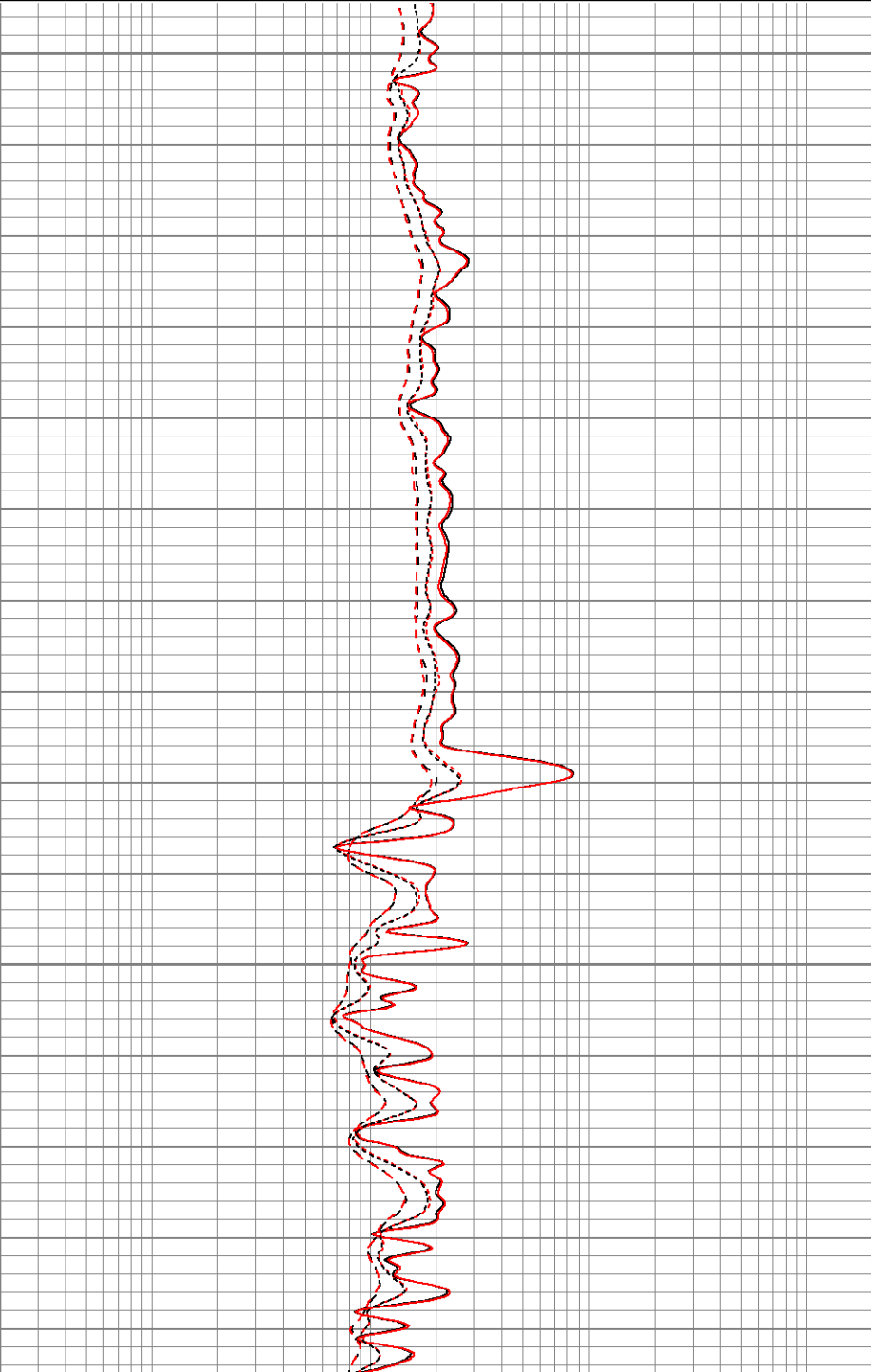
0.2	RILM (Ohm-m)	2000
0.2	RILD (Ohm-m)	2000
0.2	RLL3 (Ohm-m)	2000
0.2	RLL3-repeat (Ohm-m)	2000
0.2	RILM-repeat (Ohm-m)	2000
0.2	RILD-repeat (Ohm-m)	2000



2200

2250

2300





0.2	RILM (Ohm-m)	2000
0.2	RILD (Ohm-m)	2000
0.2	RLL3 (Ohm-m)	2000
0.2	RLL3-repeat (Ohm-m)	2000
0.2	RILM-repeat (Ohm-m)	2000
0.2	RILD-repeat (Ohm-m)	2000

# Calibration Report

Database File: xtoge3012.db  
Dataset Pathname: pass1  
Dataset Creation: Wed Jan 30 21:08:18 2008 by Log Open-Cased 070814

# Dual Induction Calibration Report

Serial-Model: 5375-G  
Surface Cal Performed: Thu Jan 10 17:04:29 2008  
Downhole Cal Performed: Thu Jan 10 17:05:58 2008

## Surface Calibration

Readings				References			Results	
Loop:	Air	Loop		Air	Loop		m	b
Deep	0.001	0.621	V	0.000	500.000	mmho-m	807.348	-1.148
Medium	0.005	0.745	V	0.000	550.000	mmho-m	743.100	-3.588
Internal:	Zero	Cal		Zero	Cal		m	b
Deep	0.001	0.621	V	0.000	500.000	mmho-m	806.966	-1.153
Medium	0.005	0.745	V	0.000	550.000	mmho-m	742.904	-3.460

## Downhole Calibration

Readings				References			Results	
Internal:	Zero	Cal		Zero	Cal		m	b
Deep	0.177	500.330	mmho-m	0.005	500.241	mmho-m	1.000	-0.172
Medium	-0.163	549.964	mmho-m	-0.127	550.018	mmho-m	1.000	0.036
Shallow	2.506	0.009	V	500.000	2.000	Ohm-m	125.000	-3.000

## Compensated Density Calibration Report

Serial-Model: 2118-poilex

## Master Calibration

	Density		Far Detector	Near Detector	
Magnesium	1.710	g/cc	692.05	655.57	cps
Aluminum	2.590	g/cc	158.48	456.38	cps
Spine Angle = 76.20			Density/Spine Ratio = 0.580		
	Size		Reading		
Small Ring	8.00	in	4.33	V	
Large Ring	14.00	in	8.24	V	


## Gamma Ray Calibration Report

Serial Number: 2001  
 Tool Model: OH  
 Performed: Tue Jan 08 10:28:42 2008  
 Calibrator Value: 1.0 GAPI  
 Background Reading: 0.0 cps  
 Calibrator Reading: 1.0 cps  
 Sensitivity: 0.2500 GAPI/cps

## Neutron Calibration Report

Serial Number: 5145  
 Tool Model: G  
 Performed: Thu Jan 10 08:01:02 2008  
 Calibrator Value: 1200 NAPI  
 Calibrator Reading: 1700 cps  
 Sensitivity: 1 NAPI/cps

Sensor	Offset (ft)	Schematic	Description	Len (ft)	OD (in)	Wt (lb)
NEU	37.19		None	0.75	1.50	5.00
			NEU-G (5145) Gearhart Epithermal	5.75	3.50	85.00
GR	31.62		GR-OH (2001) SIE	3.50	3.25	40.00
			CDL-poilex (2118)	8.79	4.00	275.00
LSD	23.45					
DCAL	23.04					
SSD	22.91					

CILD SP	10.60 10.60		DIL-G (5375) Gearhart	20.83	4.00	345.00
CILM	6.89					
RLL3	1.70					
Dataset: xtoge3012.db: field/well/run1/pass1 Total Length: 39.62 ft Total Weight: 750.00 lb O.D. 4.00 in						