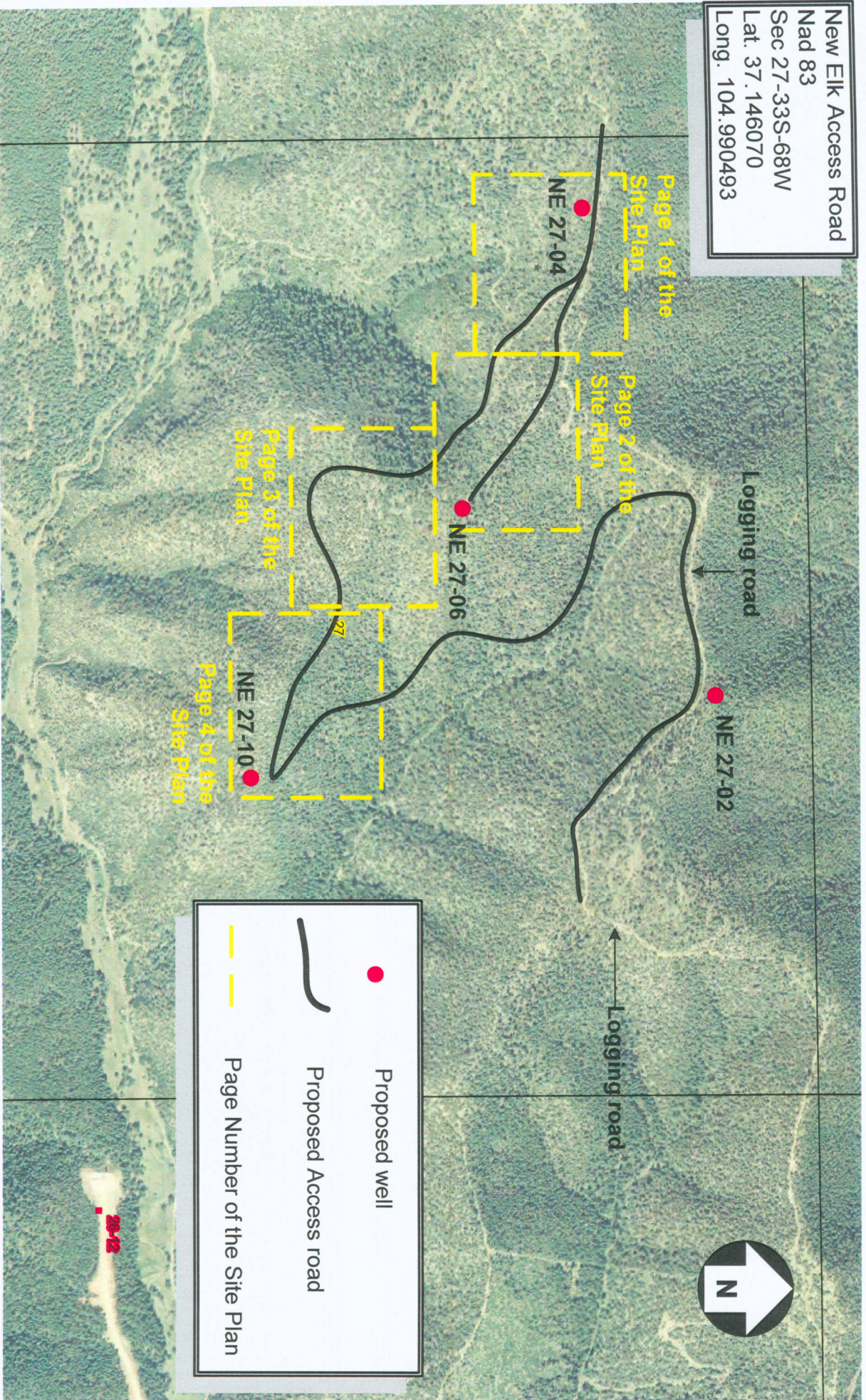


New Elk Access Road
Nad 83
Sec 27-33S-68W
Lat. 37.146070
Long. 104.990493



Site Map

New Elk Access Road
 Nad 83
 Sec 27-33S-68W
 Lat. 37.146070
 Long. 104.990493

B.M.P.'s

	EC 1* Seeding
	EC 8* Berm/Bar Ditch
	EC 12* Grading
	SC 9* Brush Barrier
	Gravel/Road Base
	Rip Rap

* Please refer to Field Wide SWMMP for description

PROPOSED

	BOUNDARY OF DISTURBANCE
	CONSTRUCTION SITE BOUNDARY
	PIPELINE
	CULVERT

Site Plan

Page 2

