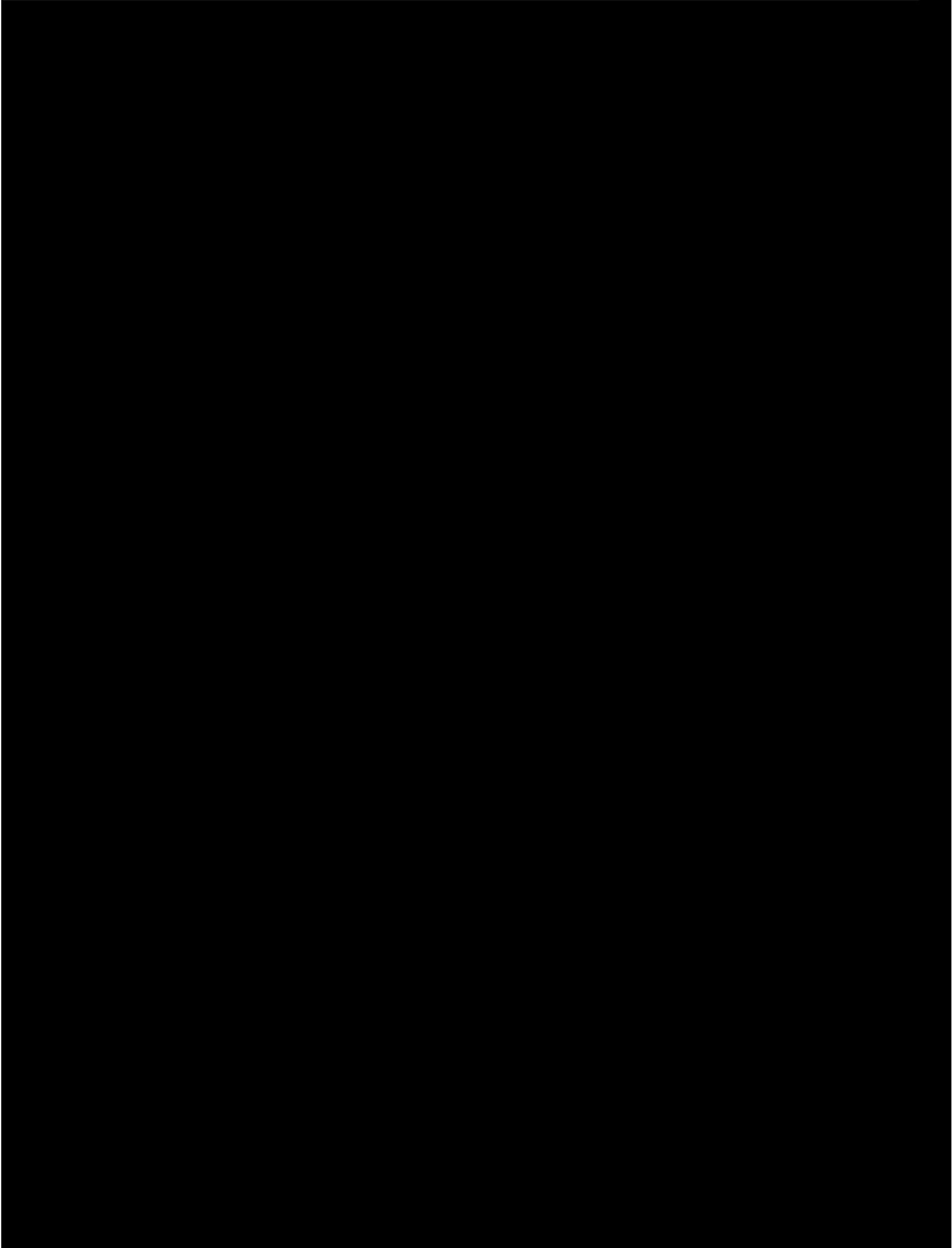
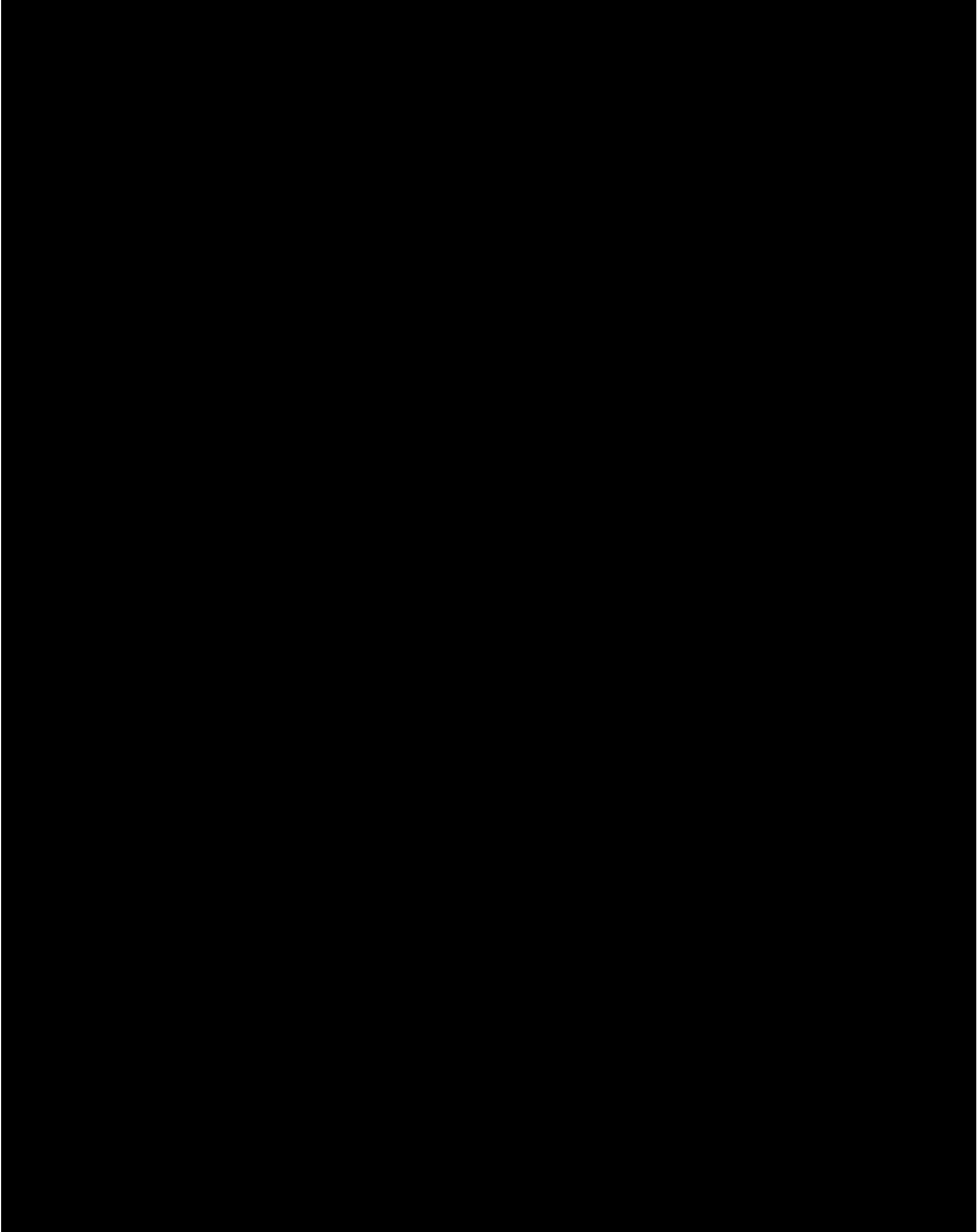
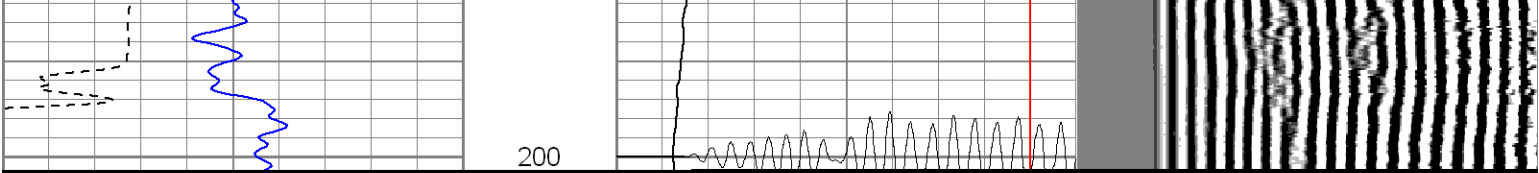


CompanyXTO Energy Inc.  
Well Apache Canyon 36-16  
Field Purgatorie River  
County Las Animas

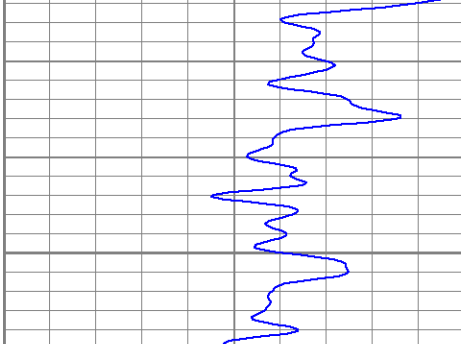
Date	
Run Number	
Depth Driller	
Depth Logger	
Bottom Logged In	
Top Log Interval	
Open Hole Size	
Type Fluid	
Density / Viscosity	
Max. Recorded Te	
Estimated Cement	
Time Well Ready	
Time Logger on B	
Equipment Numb	
Location	
Recorded By	
Witnessed By	
Run Number	
Casing Record	
Surface String	
Prot. String	
Production String	
Liner	

Database File: xtoac36-16b8206.db  
Dataset Pathname: pass4  
Presentation Format: cblrt

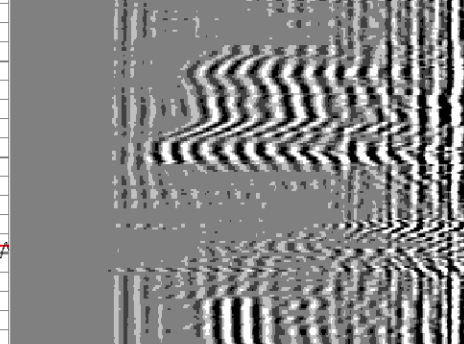
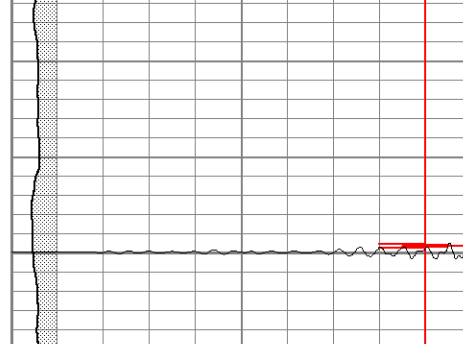


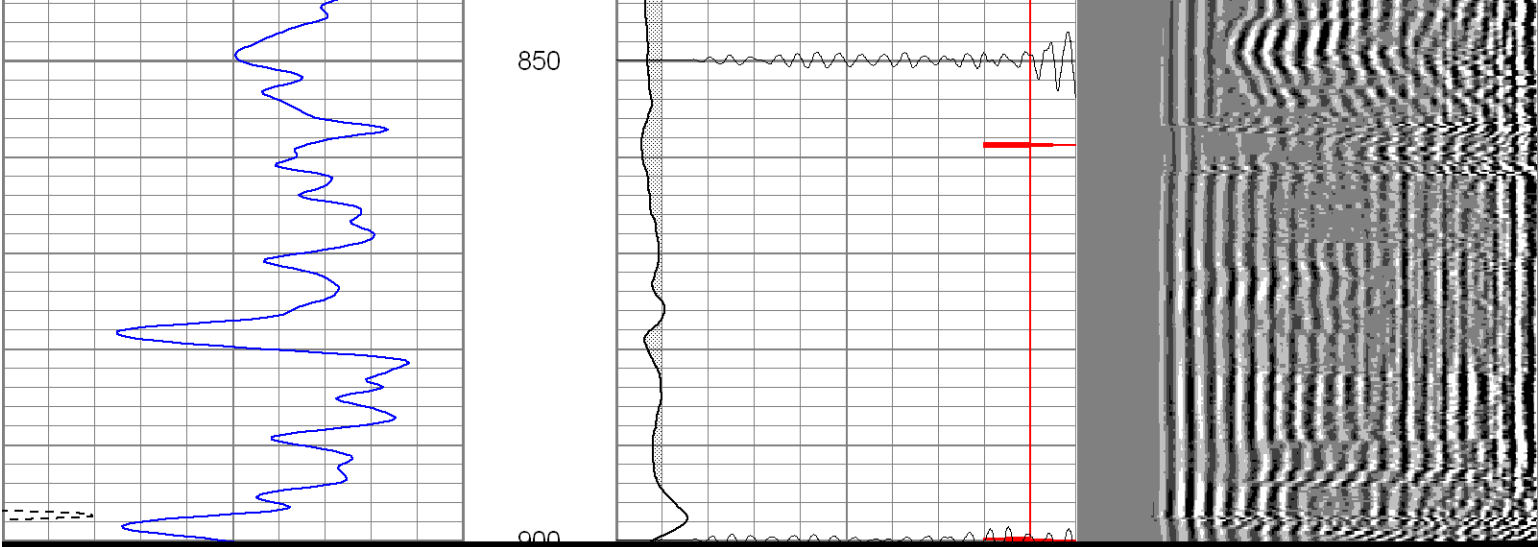


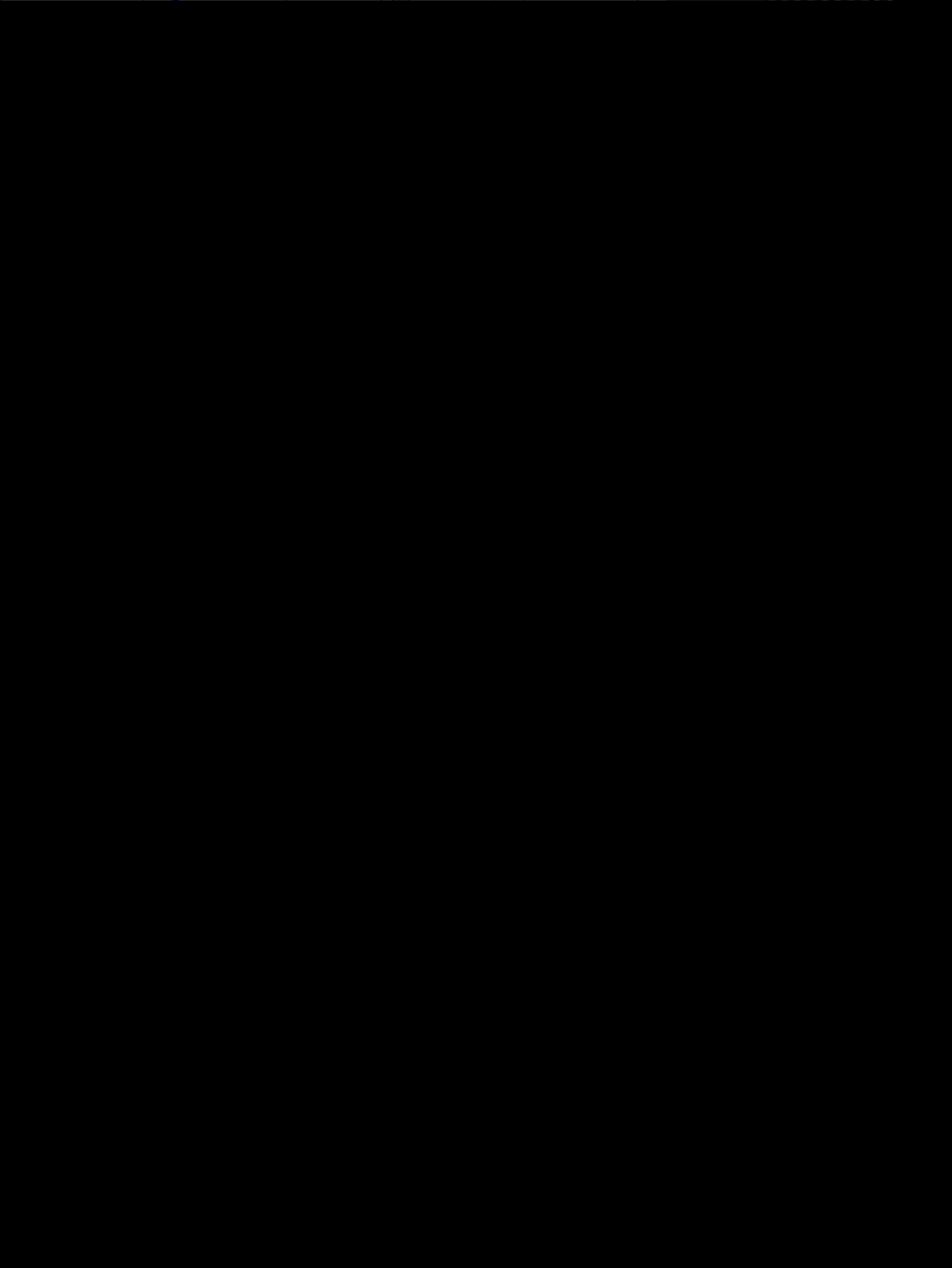
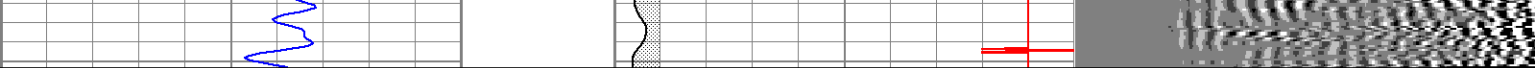




650

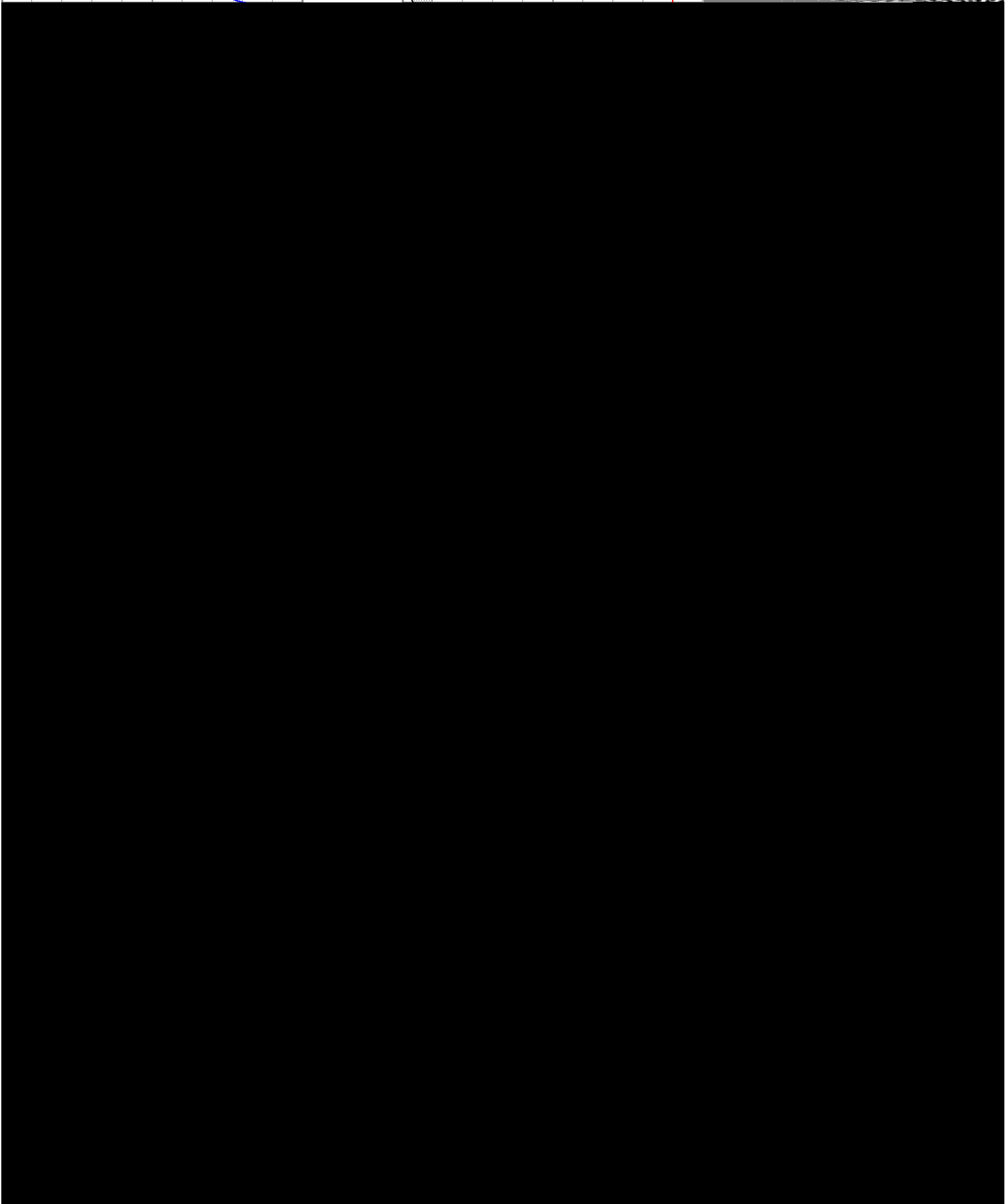
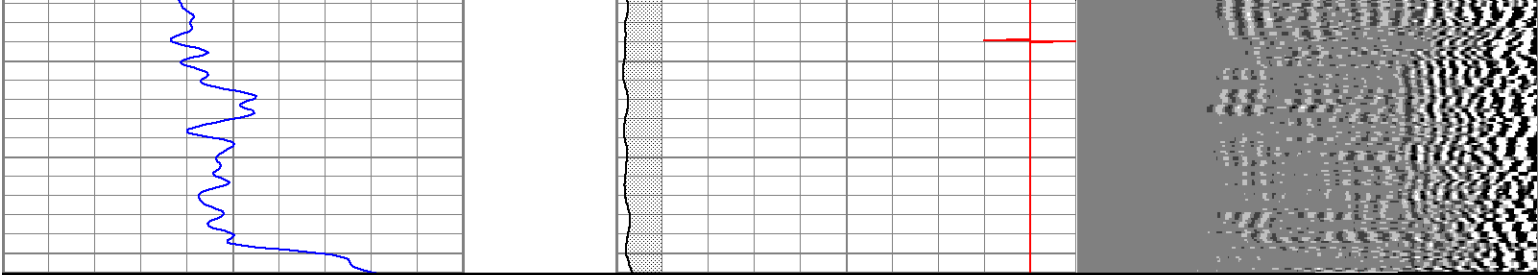


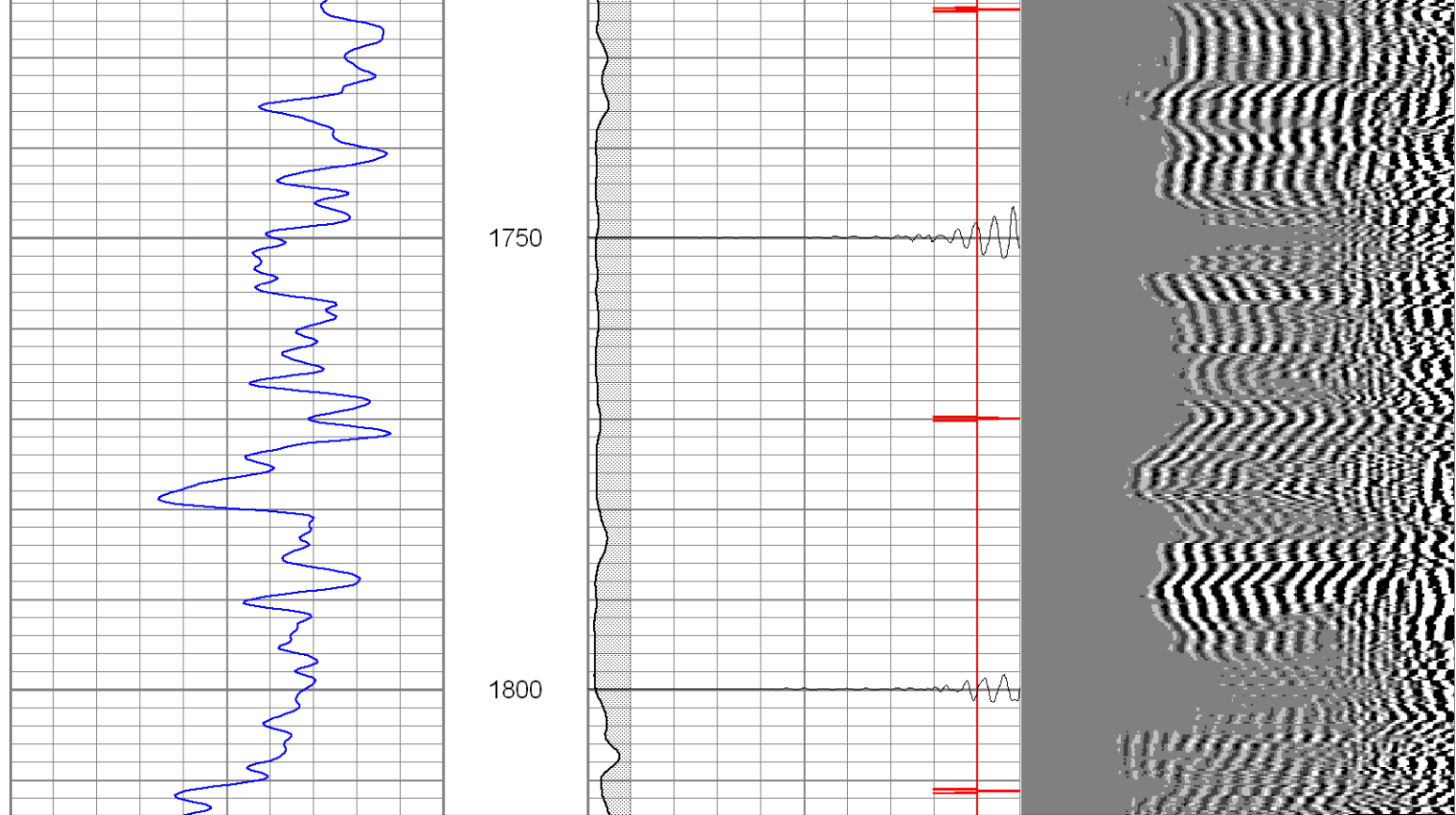


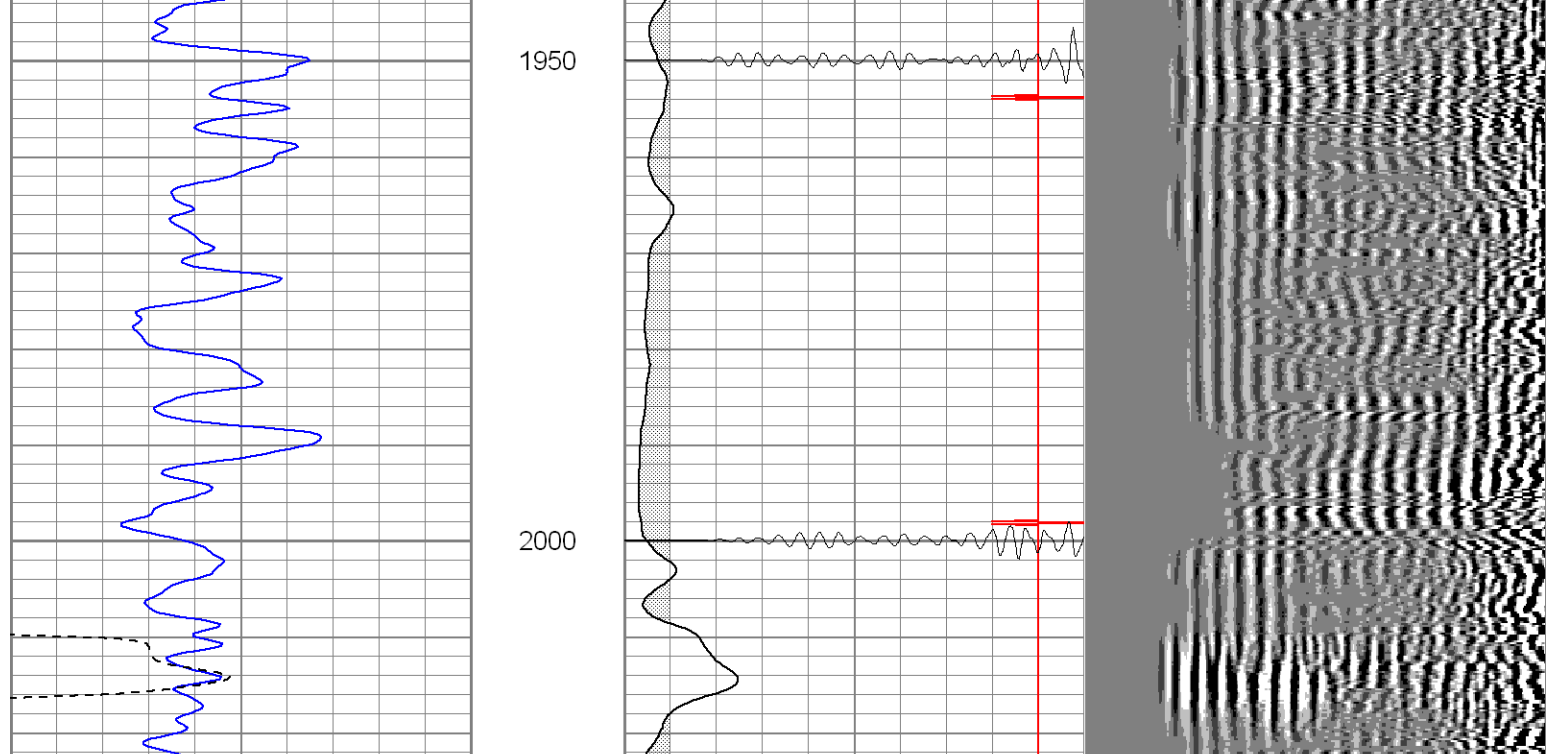


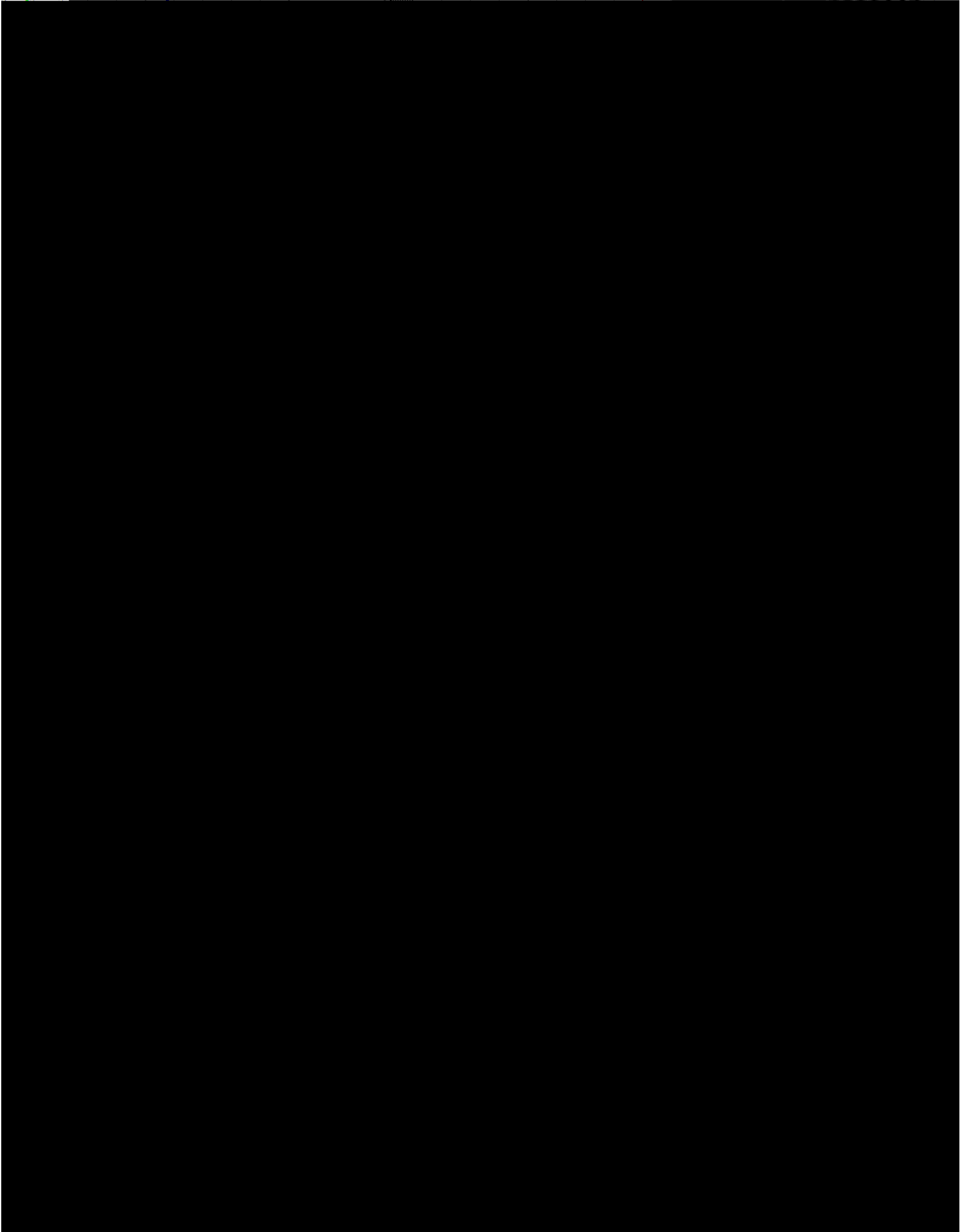
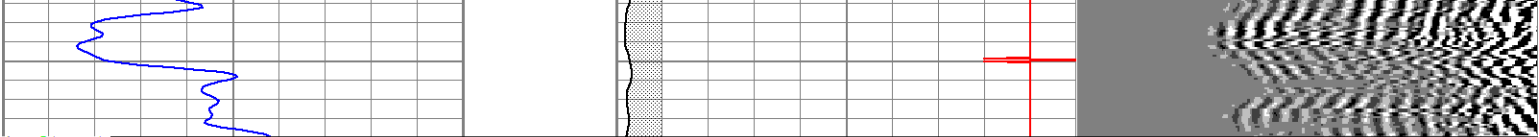


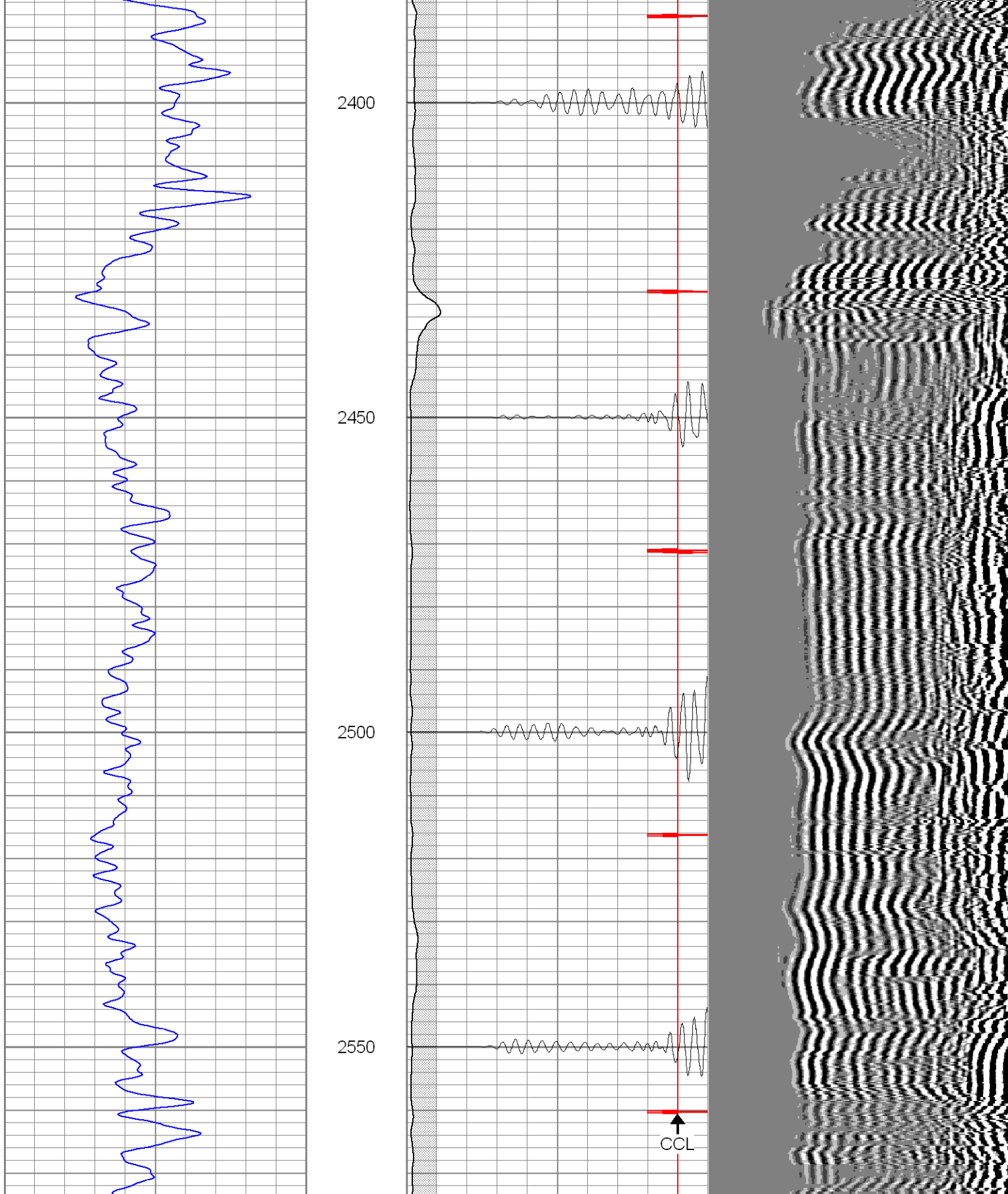












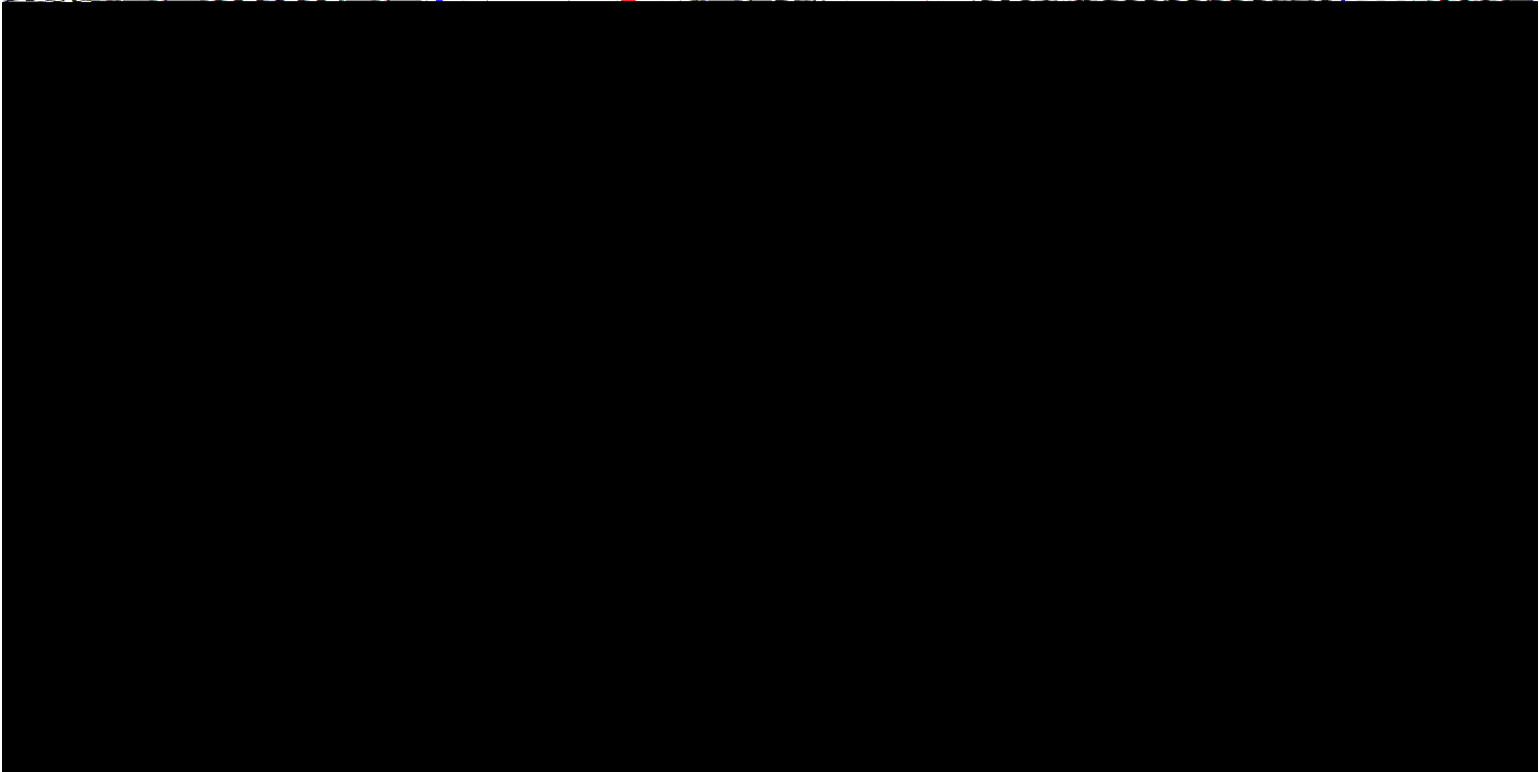
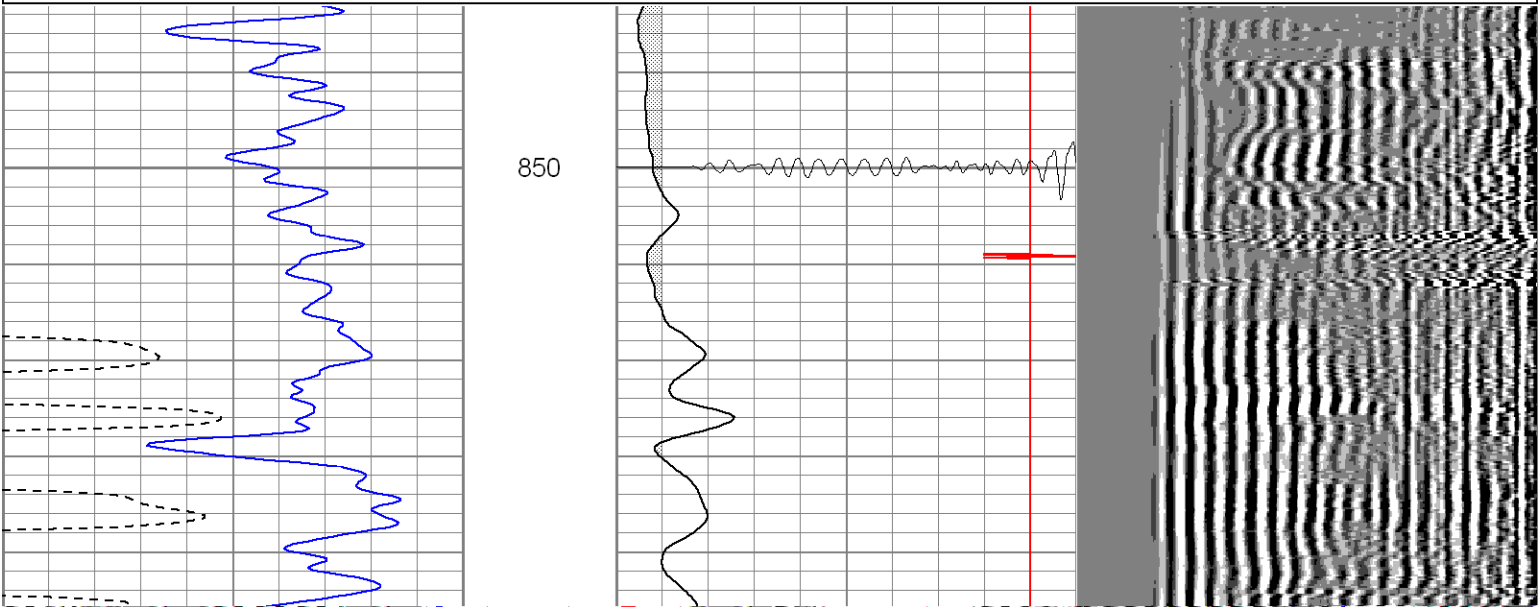
0	GR (GAPI)	200	0	AMP3 (mV)	100	200	Variable Density	1200
400	TT3 (usec)	200	18	CCL	-2			
			200	CBL5	1200			

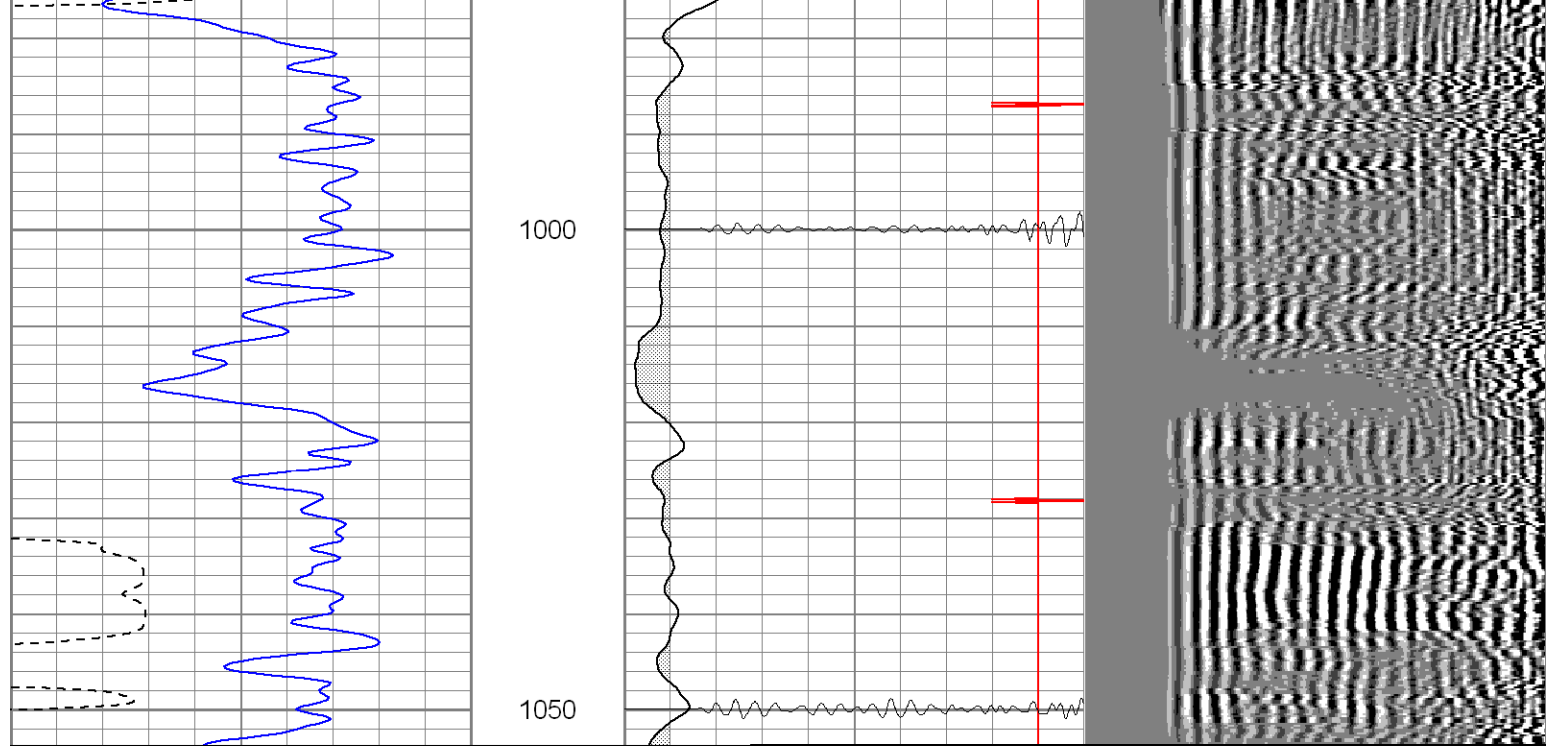
Patterson

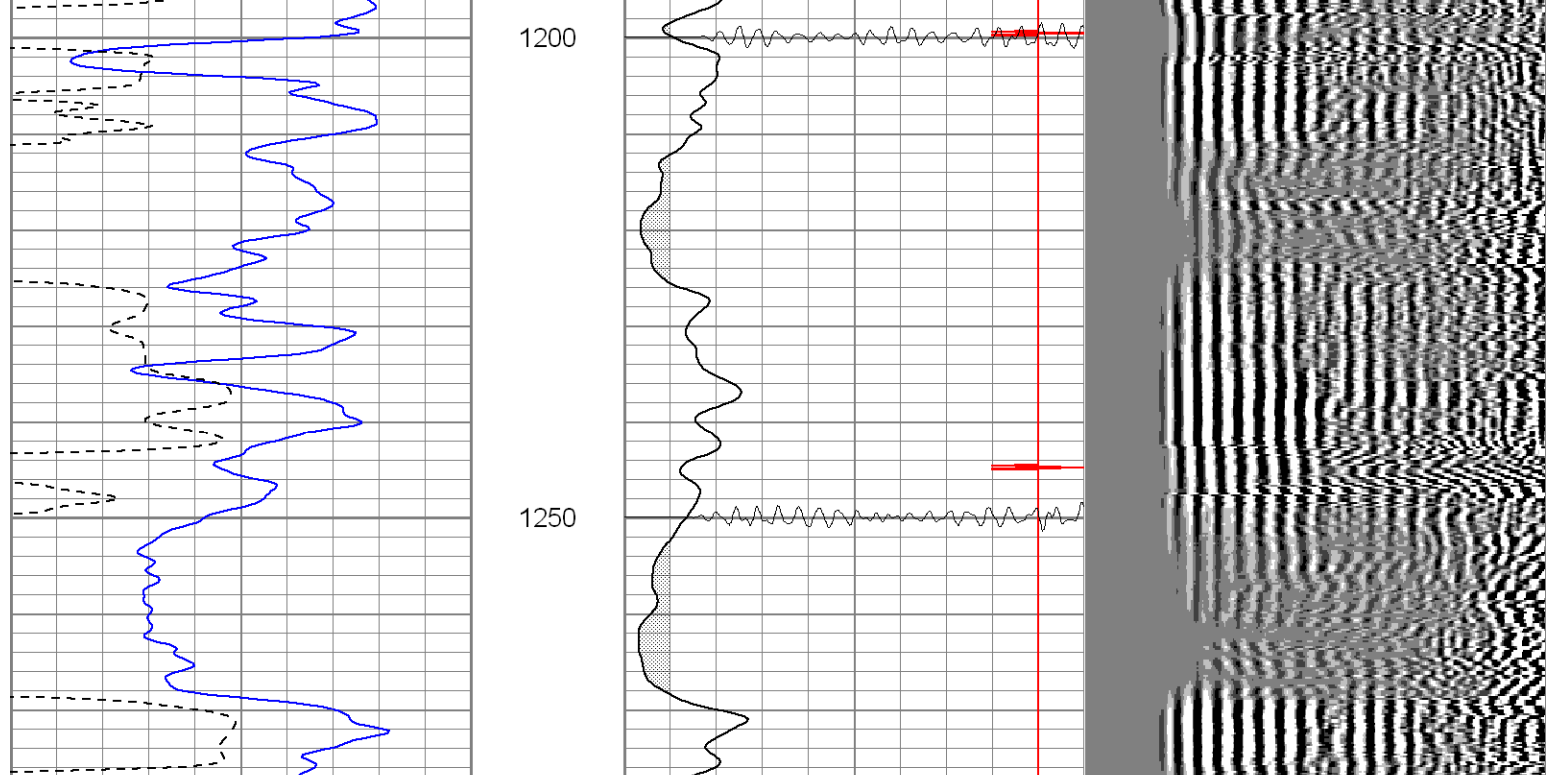
Main Pass 0 PSI

Database File: xtoac36-16b8206.db  
Dataset Pathname: pass2  
Presentation Format: cblrt  
Dataset Creation: Wed Aug 02 07:55:53 2006 by Log Warrior 7.0 STD Cas  
Charted by: Depth in Feet scaled 1:240

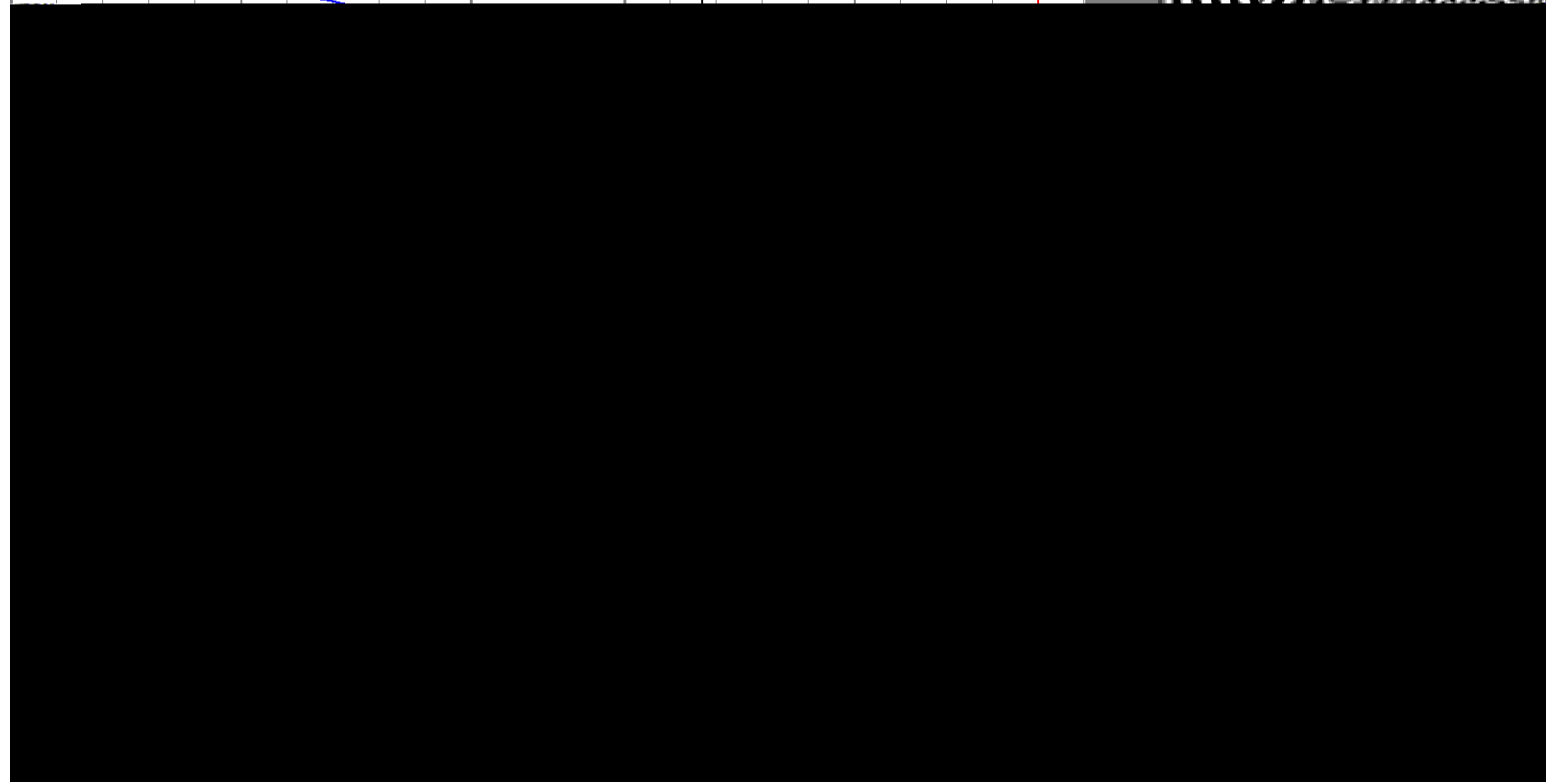
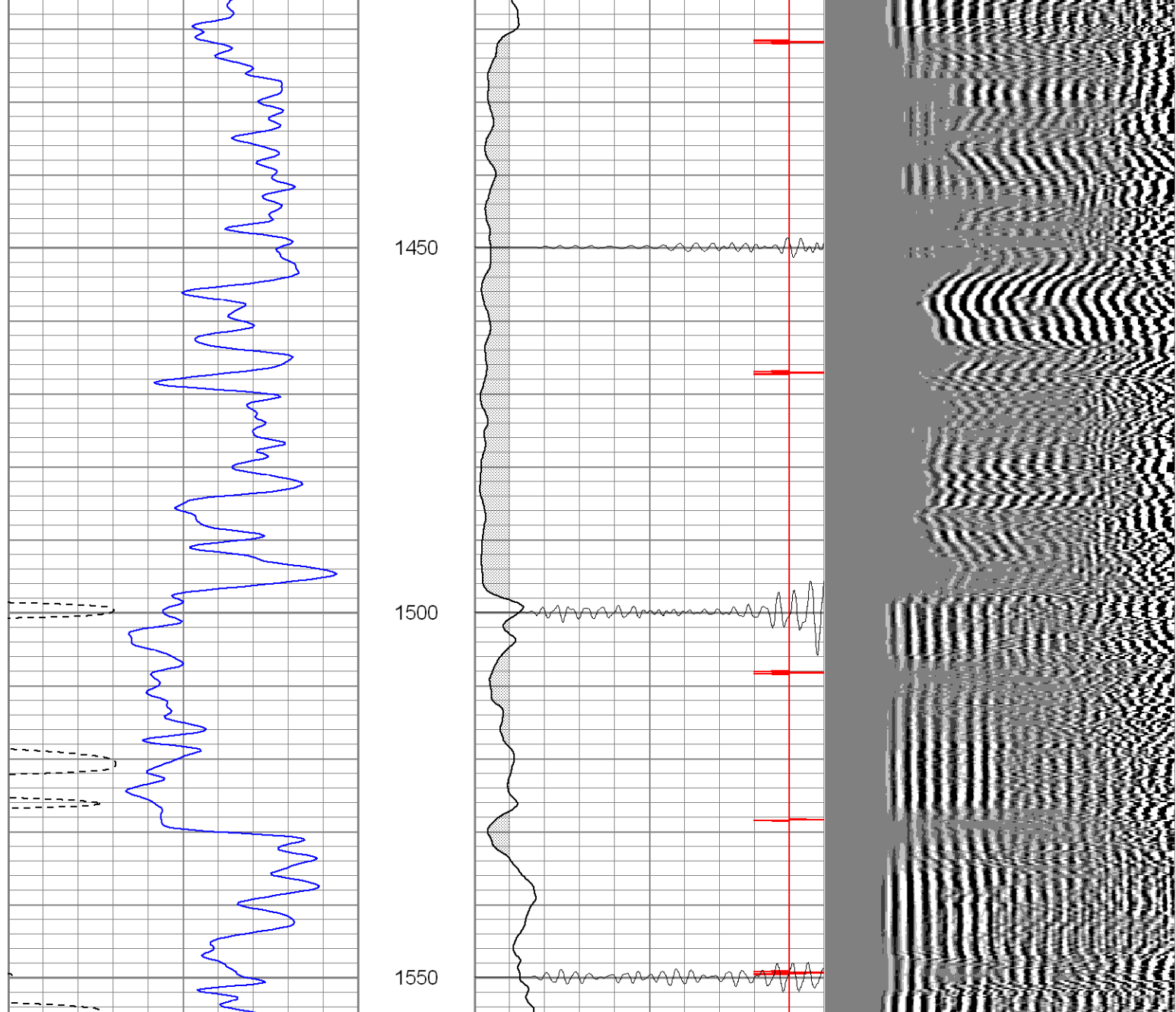
0	GR (GAPI)	200	0	AMP3 (mV)	100	200	Variable Density	1200
400	TT3 (usec)	200	18	CCL	-2			
			200	CBL5	1200			

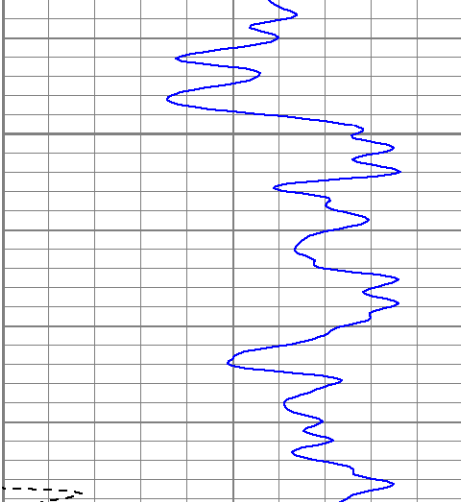












1650

