

# CEMENT BOND LOG

Well Apache Canyon 35-12

Field Purgatoire River

County Las Animas State Colorado

Location: API #: 05 071 09325 00

1991' FSL &amp; 1072' FWL

SEC 35 TWP 33S RGE 67W

Permanent Datum	Ground Level	Elevation	7080
Log Measured From	Ground Level		

Elevation	K.B. ----
	D.F. ----
	G.L. 7080'

Company	XTO Energy Inc.
Well	Apache Canyon
Field	Purgatoire River
County	Las Animas
State	Colorado

date	9-06-07
------	---------

Depth Driller	1850'
---------------	-------

Top Logged Interval	1.00
Bottom Logged Interval	.1751

Open Hole Size	7 7/8"
----------------	--------

density / Viscosity	///
---------------------	-----

max. Recouped 1cm/p.	112 DLO
Estimated Cement Top	Surface

Time Well Ready	NOA
Time Logger on Bottom	9:15 A.M.

Equipment Number	1031
Location	Trinidad

Witnessed By	Mr. Nichols
--------------	-------------

Dole Hole Record		
Run Number	Bit	From To



Surface String	8 5/8"
----------------	--------

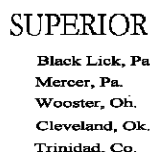
Production String	5 1/2"	
bar		


---

Comments

Well Directions:

First Bosque entrance, right on Cherry Canyon,  
at Y stay right, first left to location.



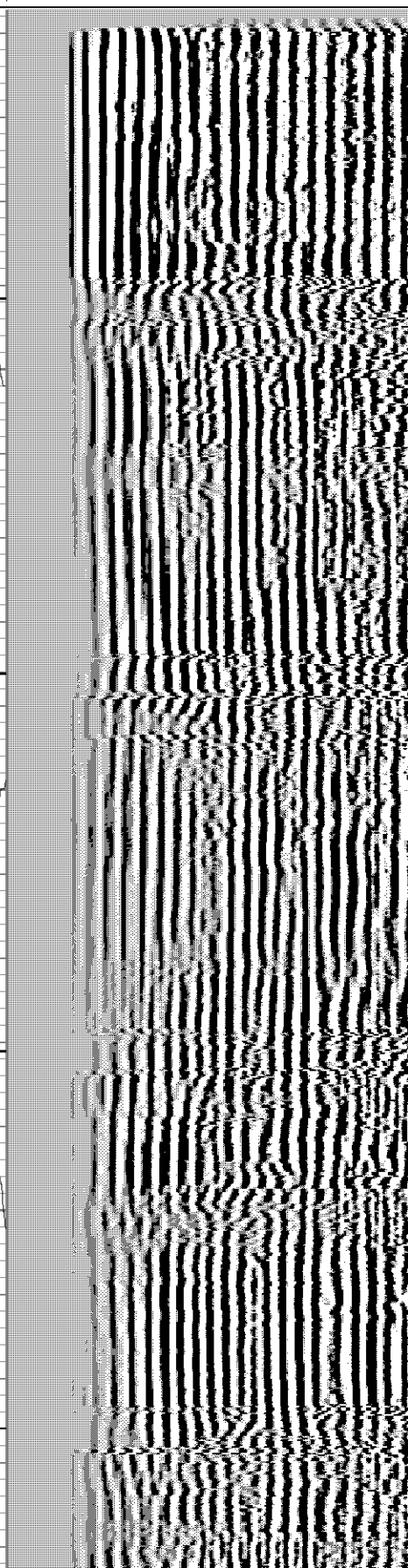
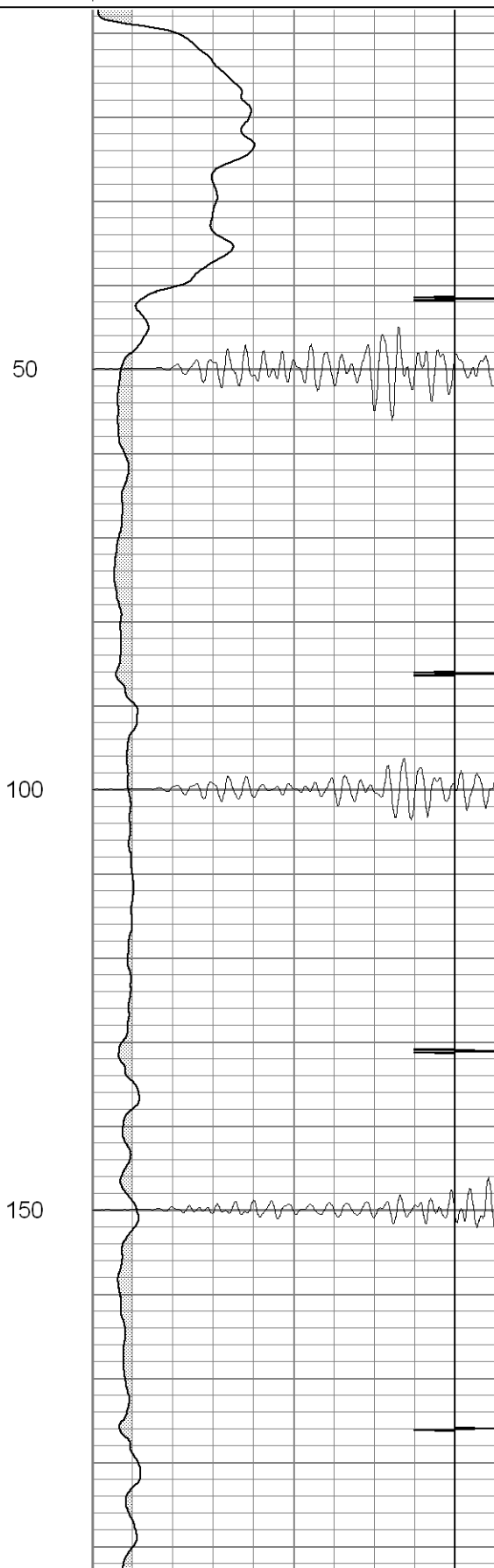
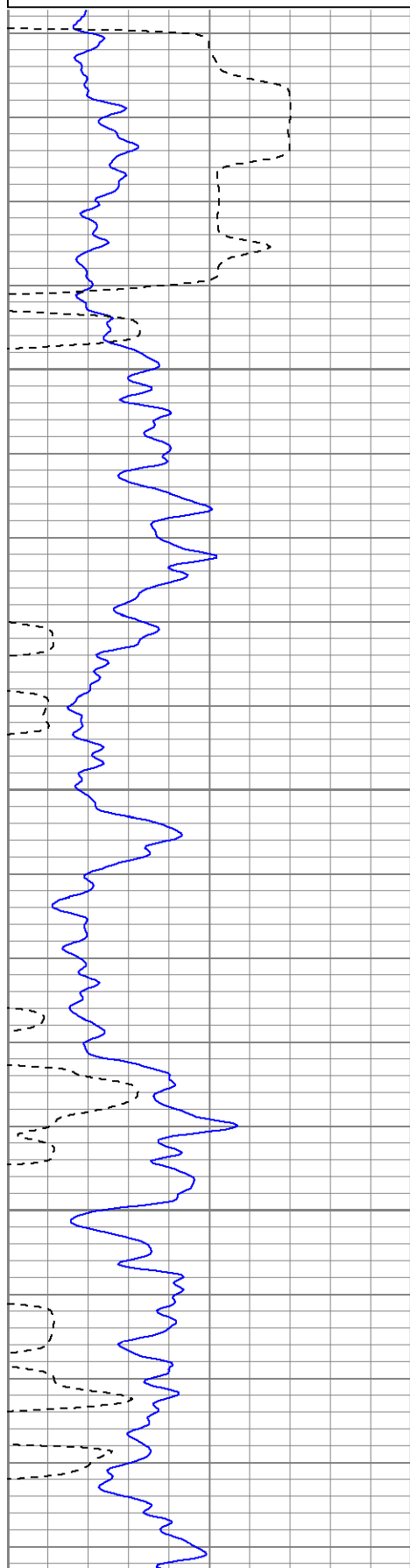
# Main Pass

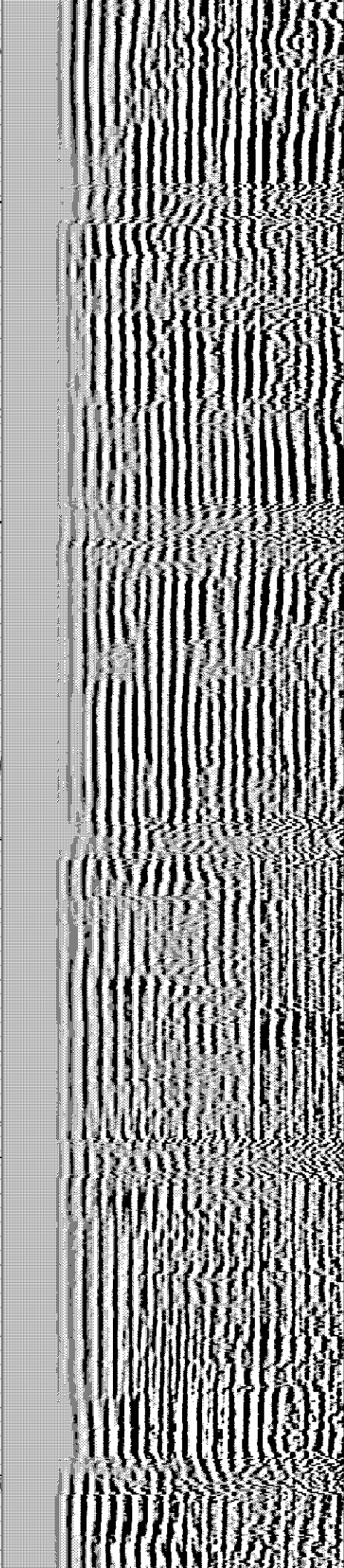
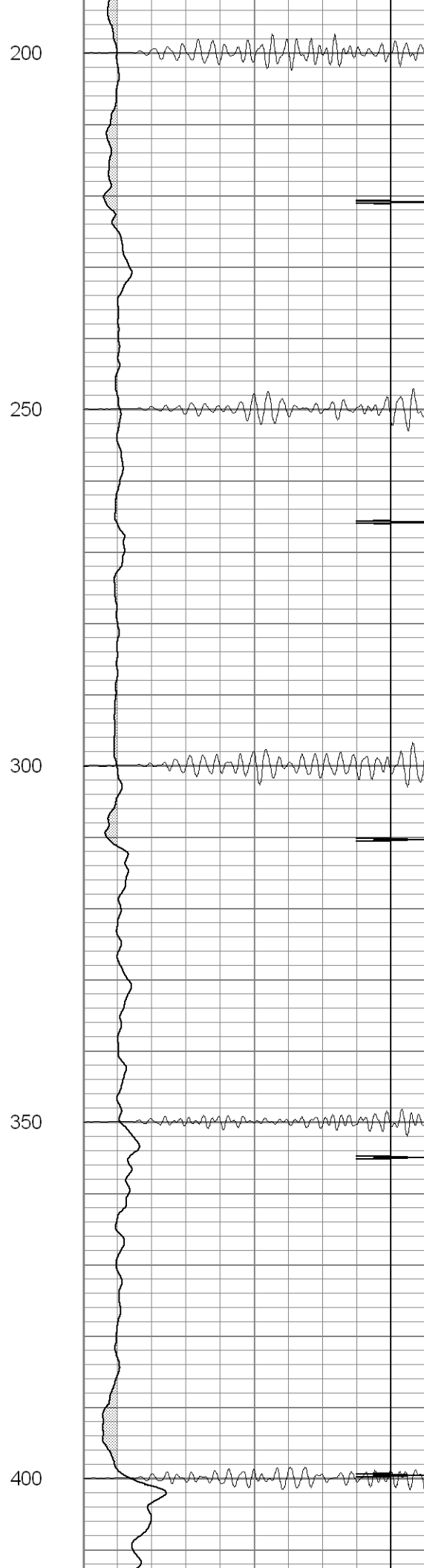
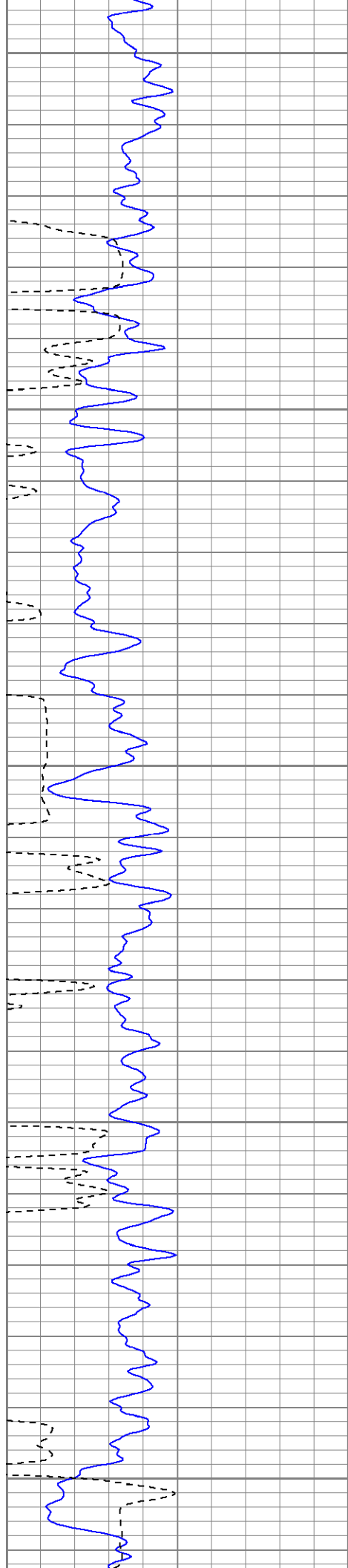
Database File: xtoac3512-090607b.db  
Dataset Pathname: pass2  
Presentation Format: cblrt  
Dataset Creation: Thu Sep 06 09:23:53 2007 by Log Open-Cased 061129  
Charted by: Depth in Feet scaled 1:240

0	GR (GAPI)	200
400	TT3 (usec)	200

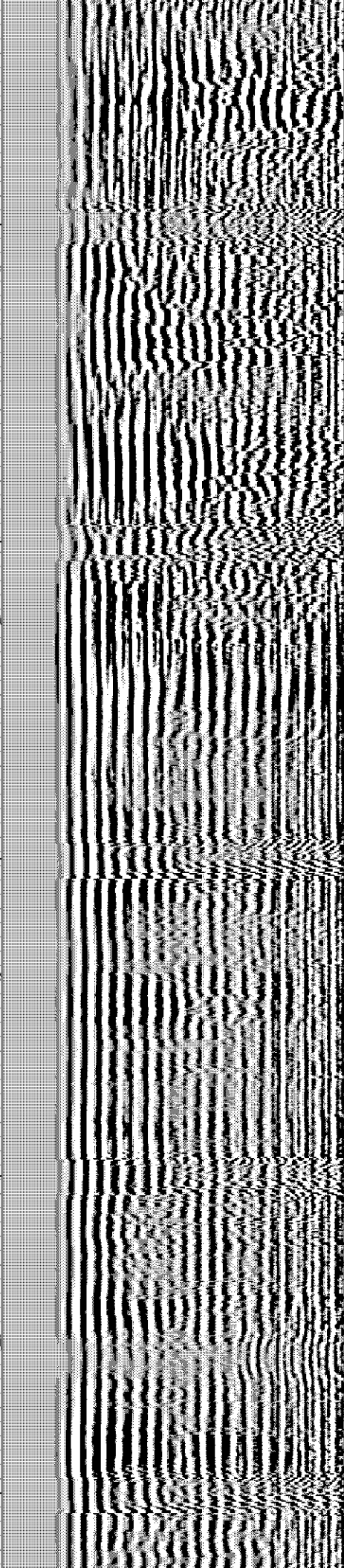
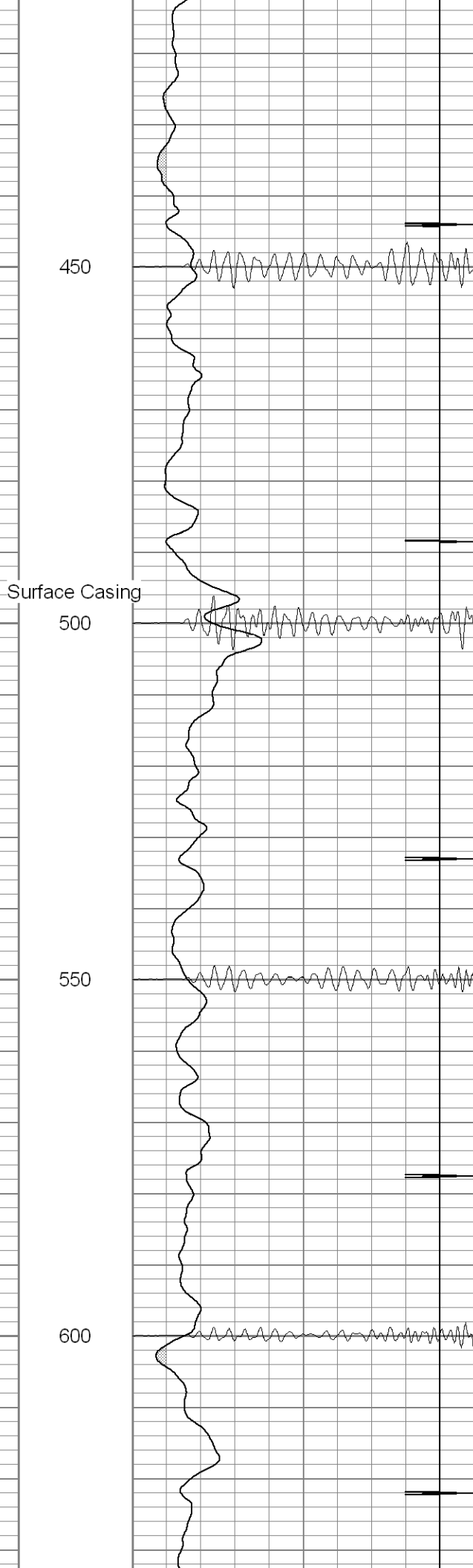
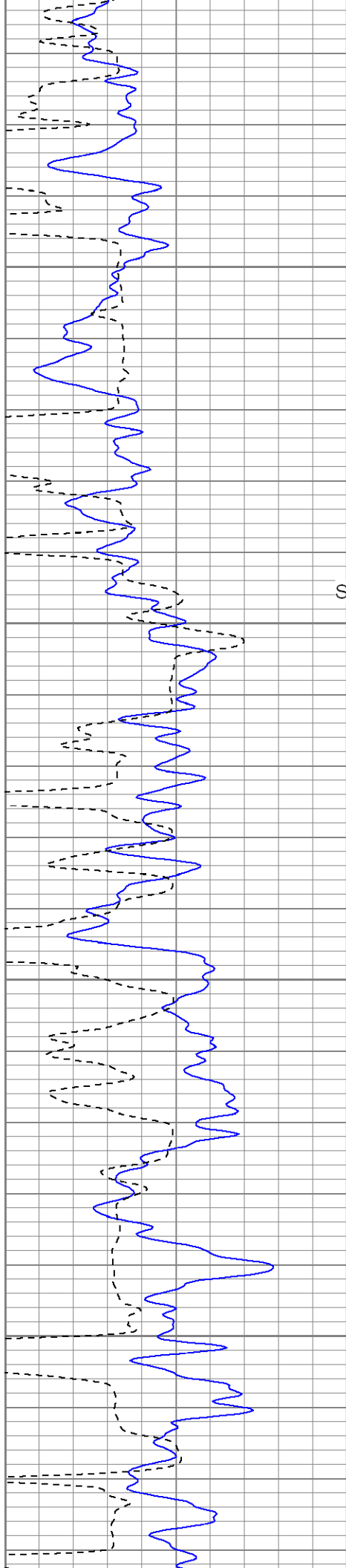
0	AMP3 (mV)	100
18	CCL	-2
200	CBL5	1200

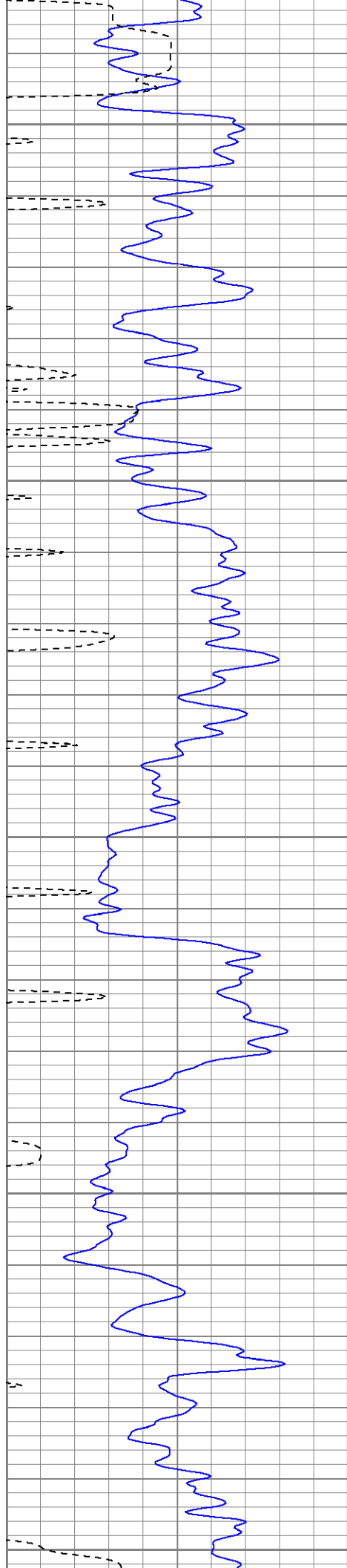
200	Variable Density	1200
-----	------------------	------











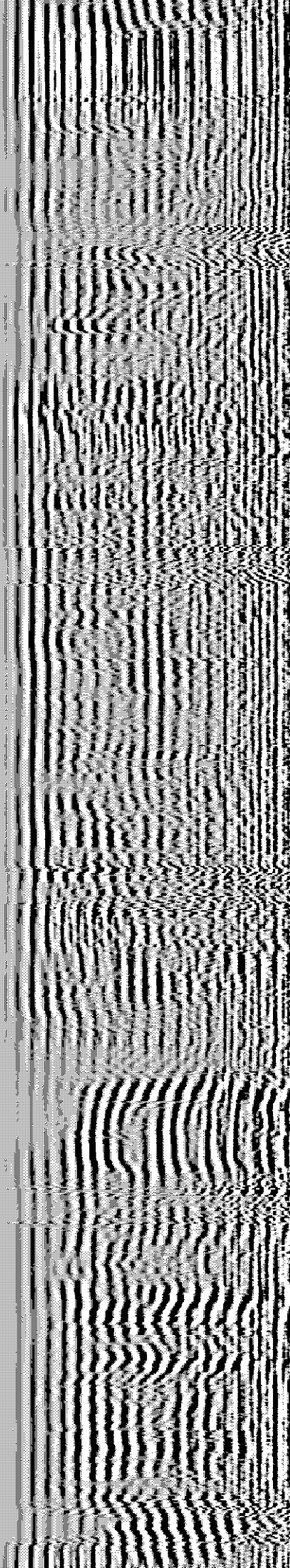
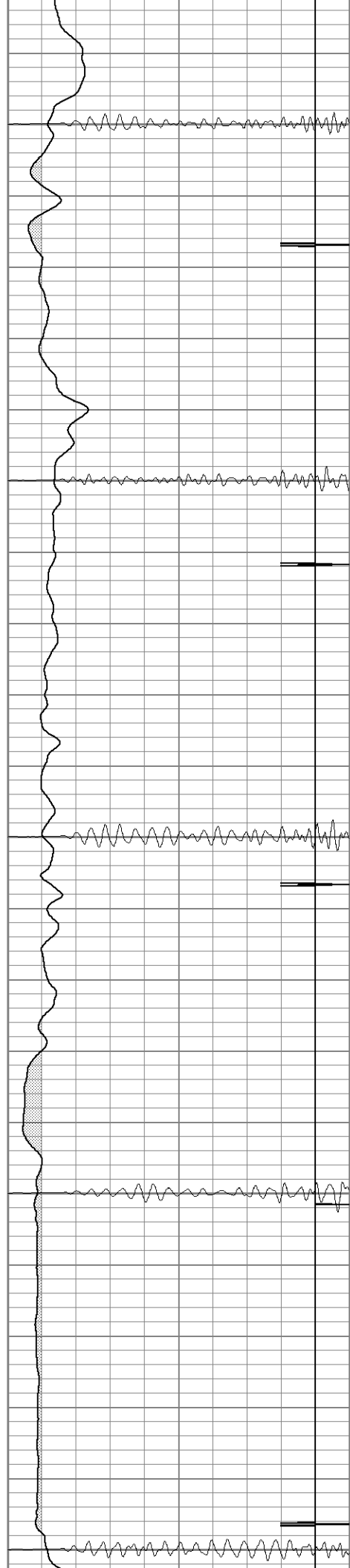
650

700

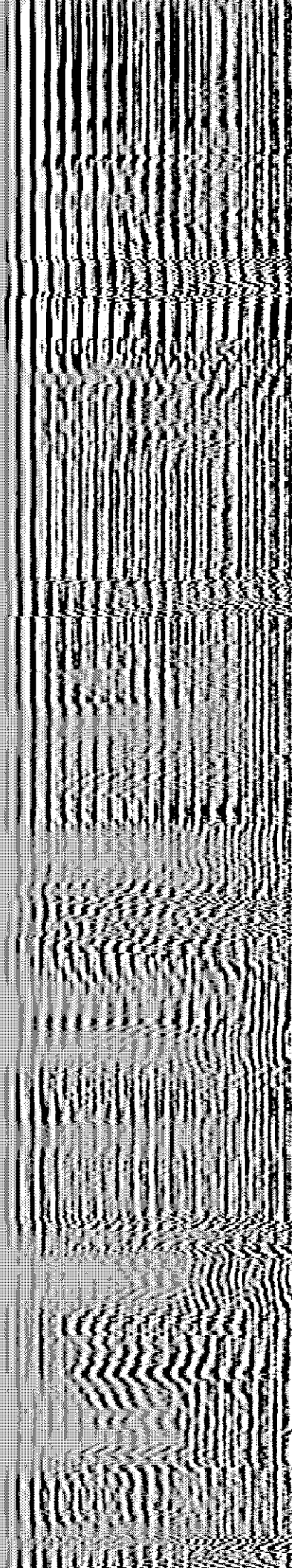
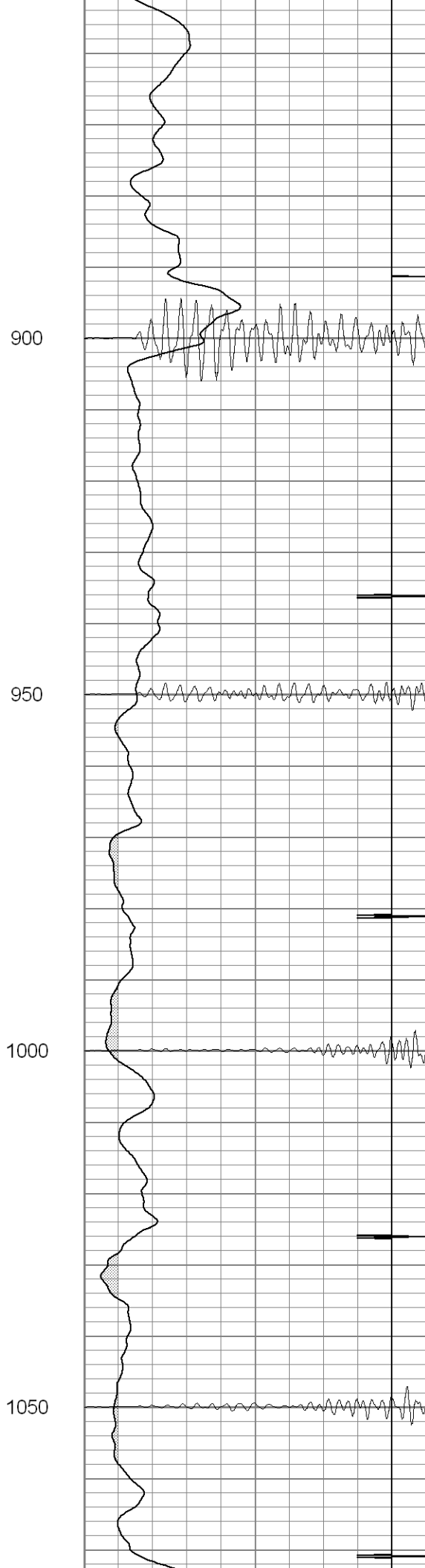
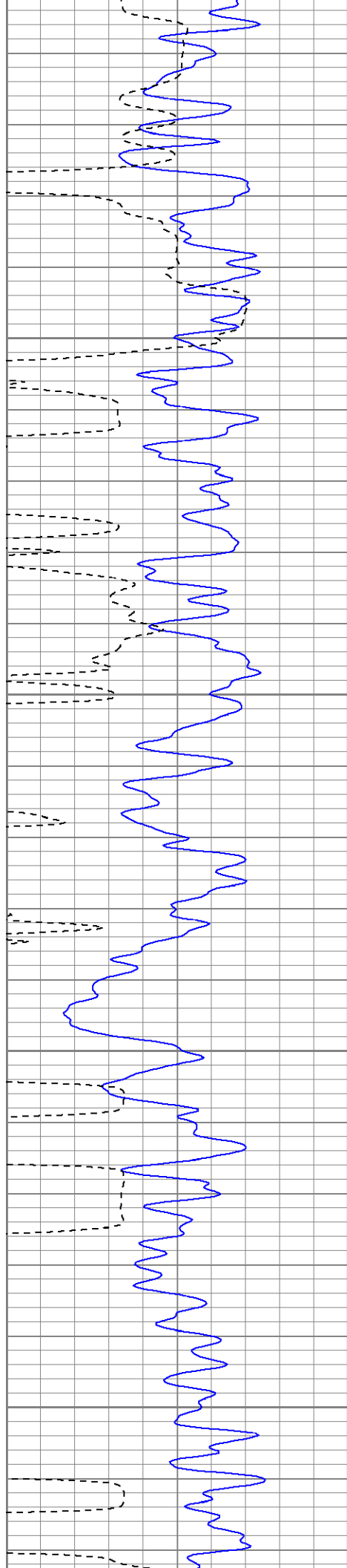
750

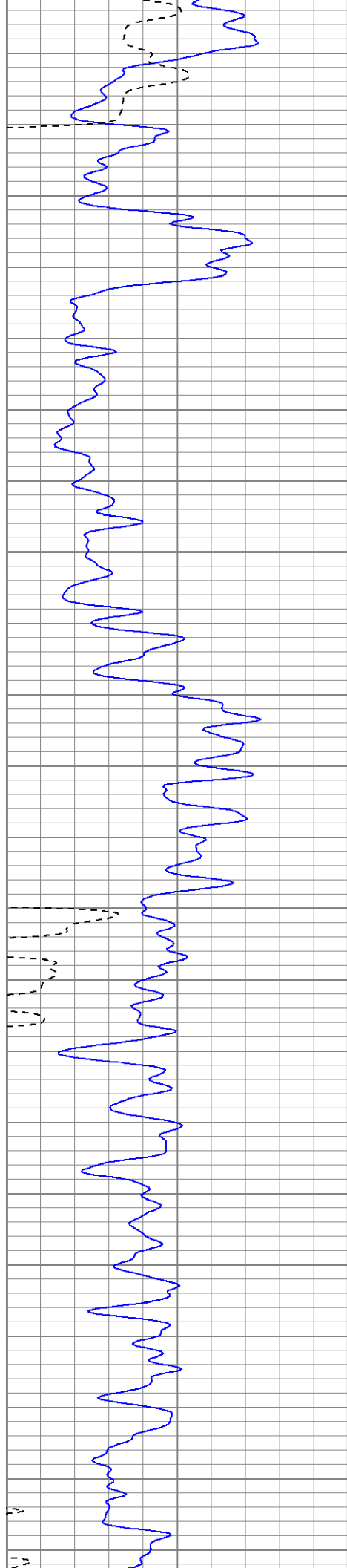
800

850







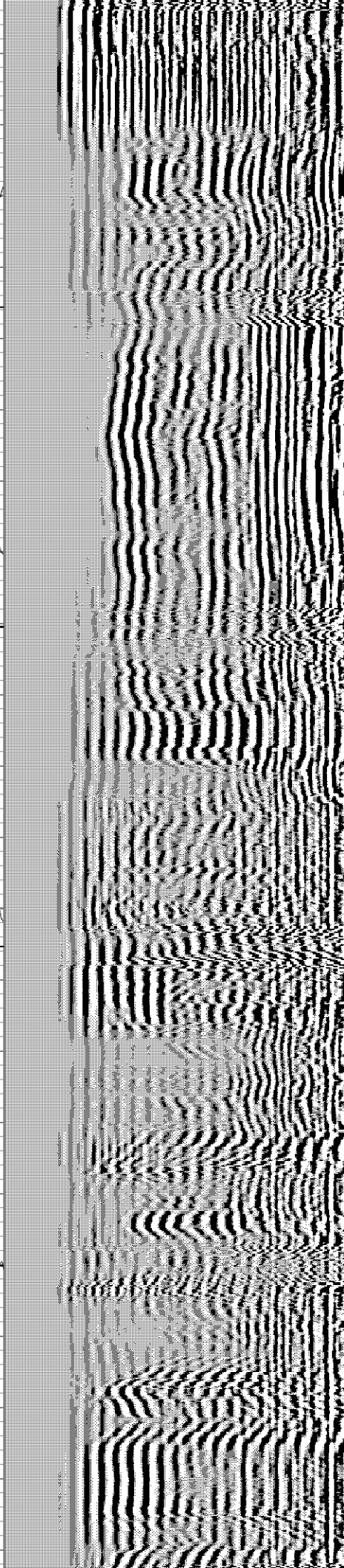


1100

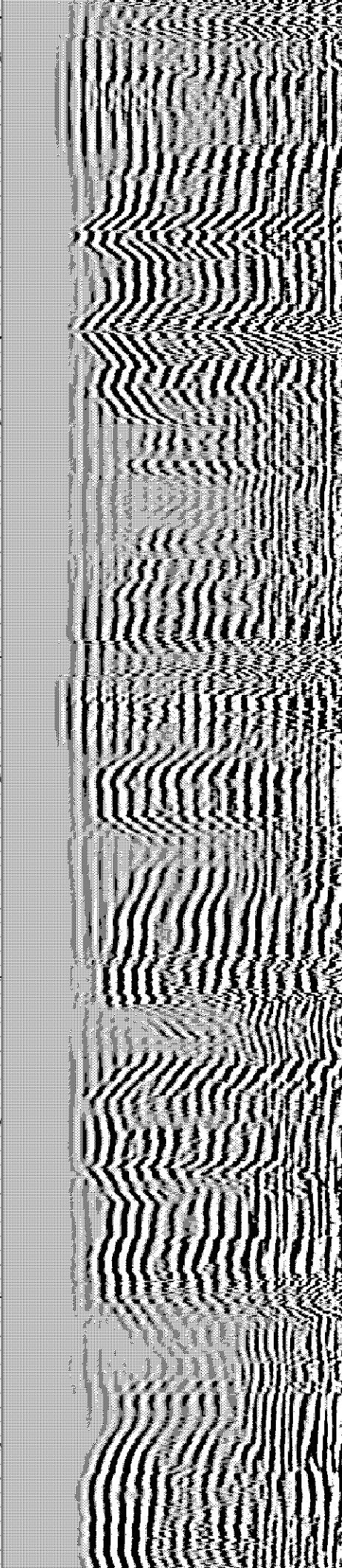
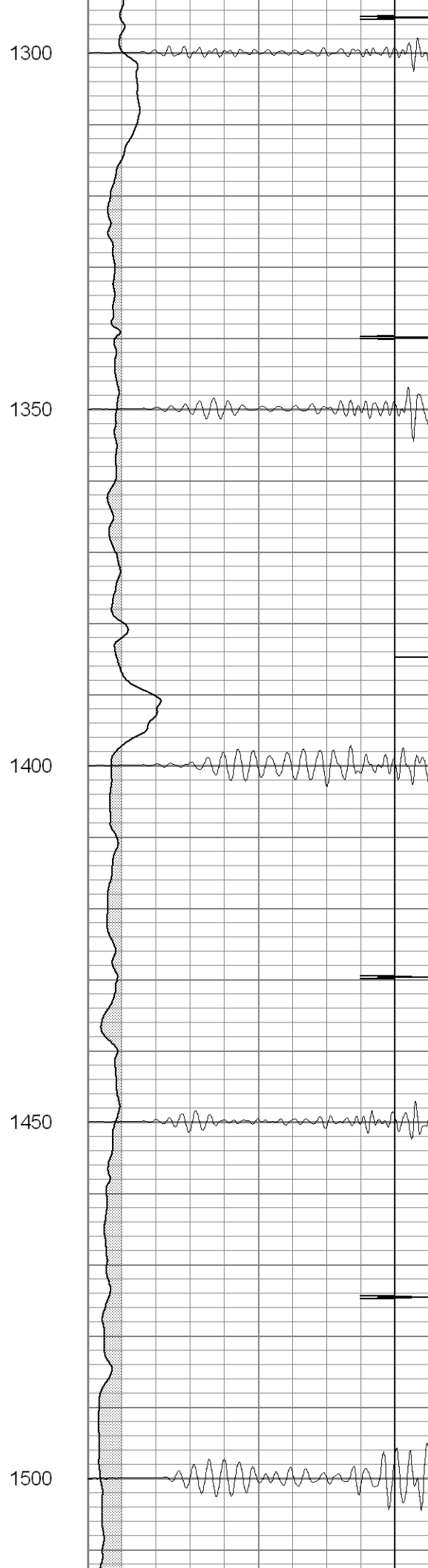
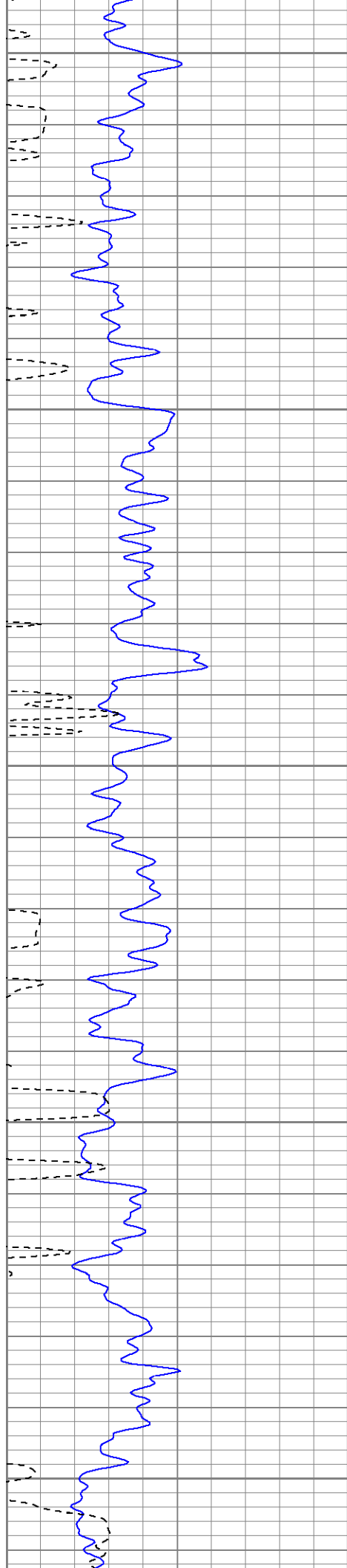
1150

1200

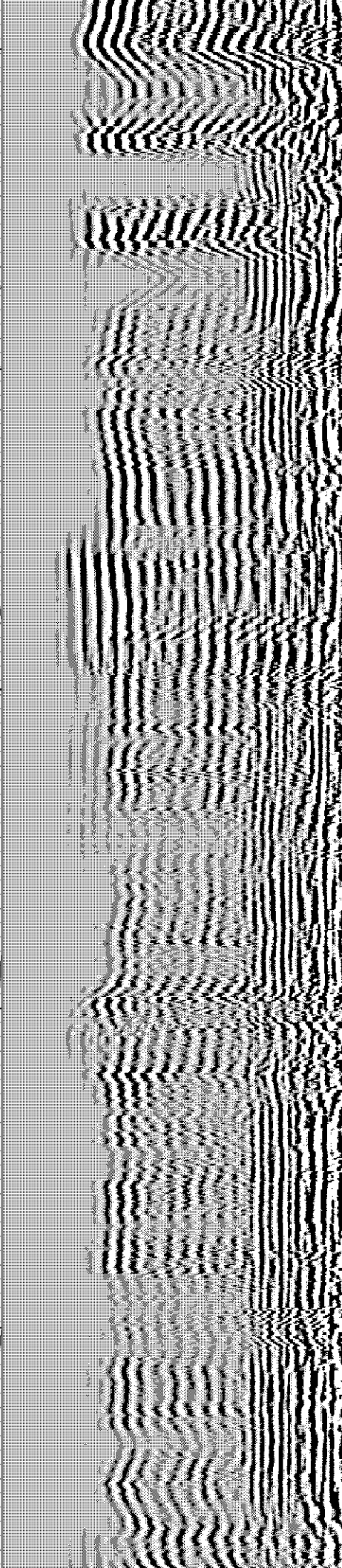
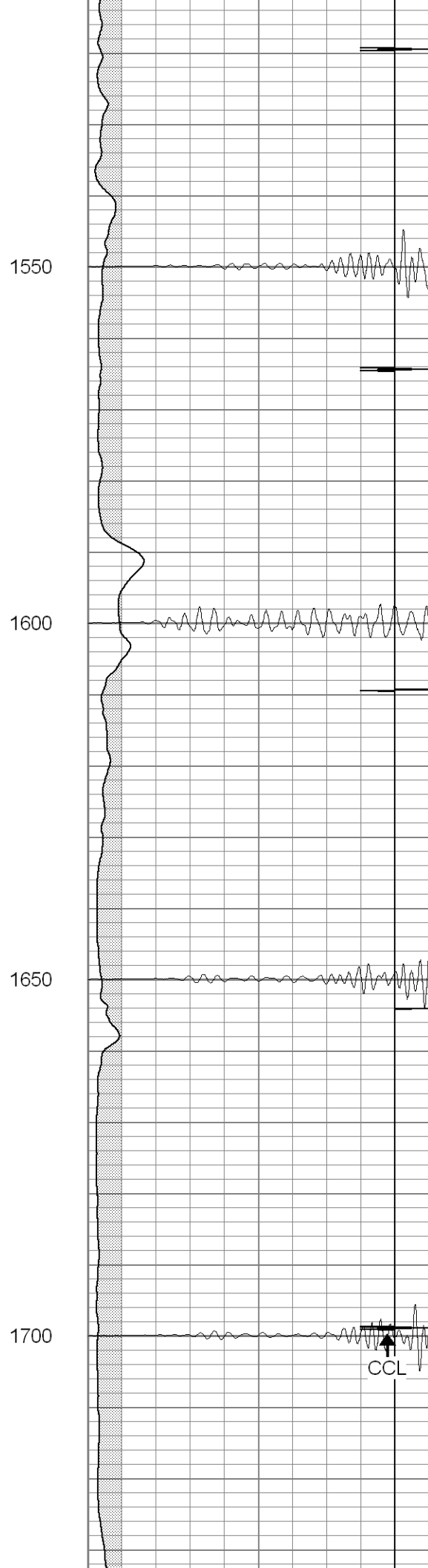
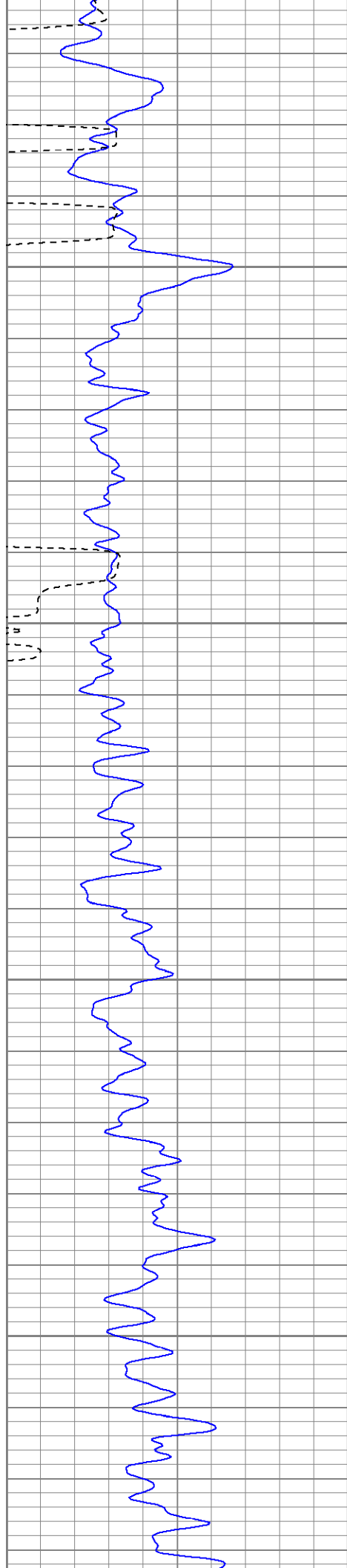
1250

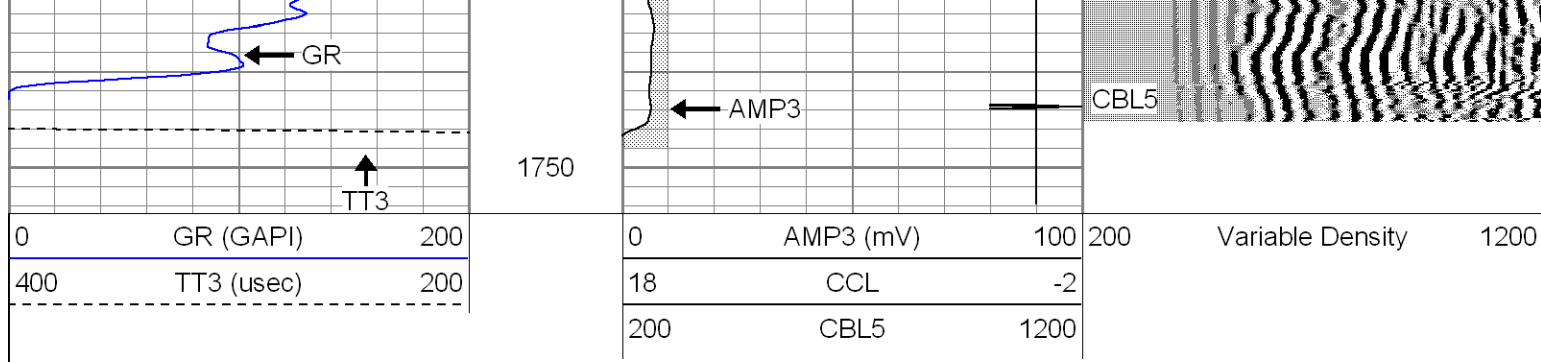










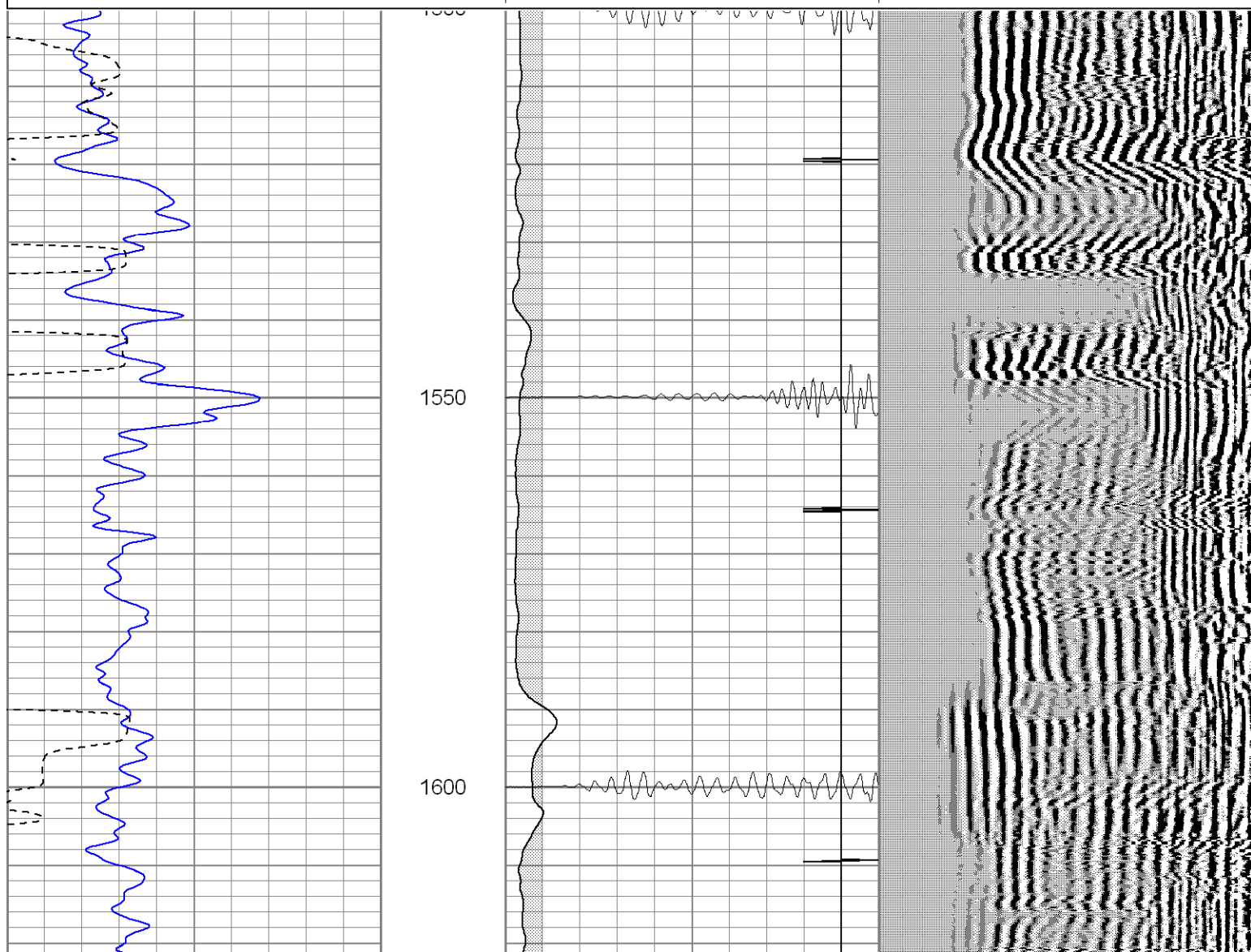
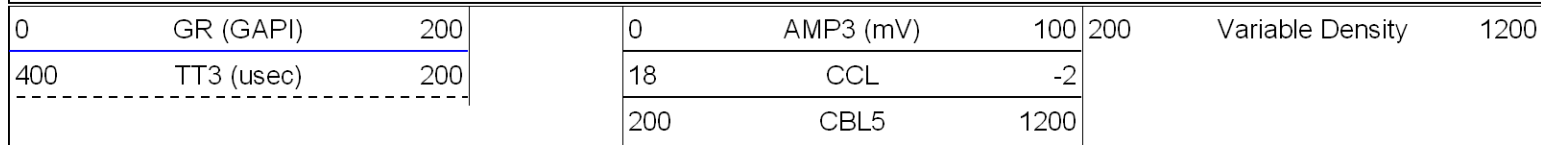


**SUPERIOR**

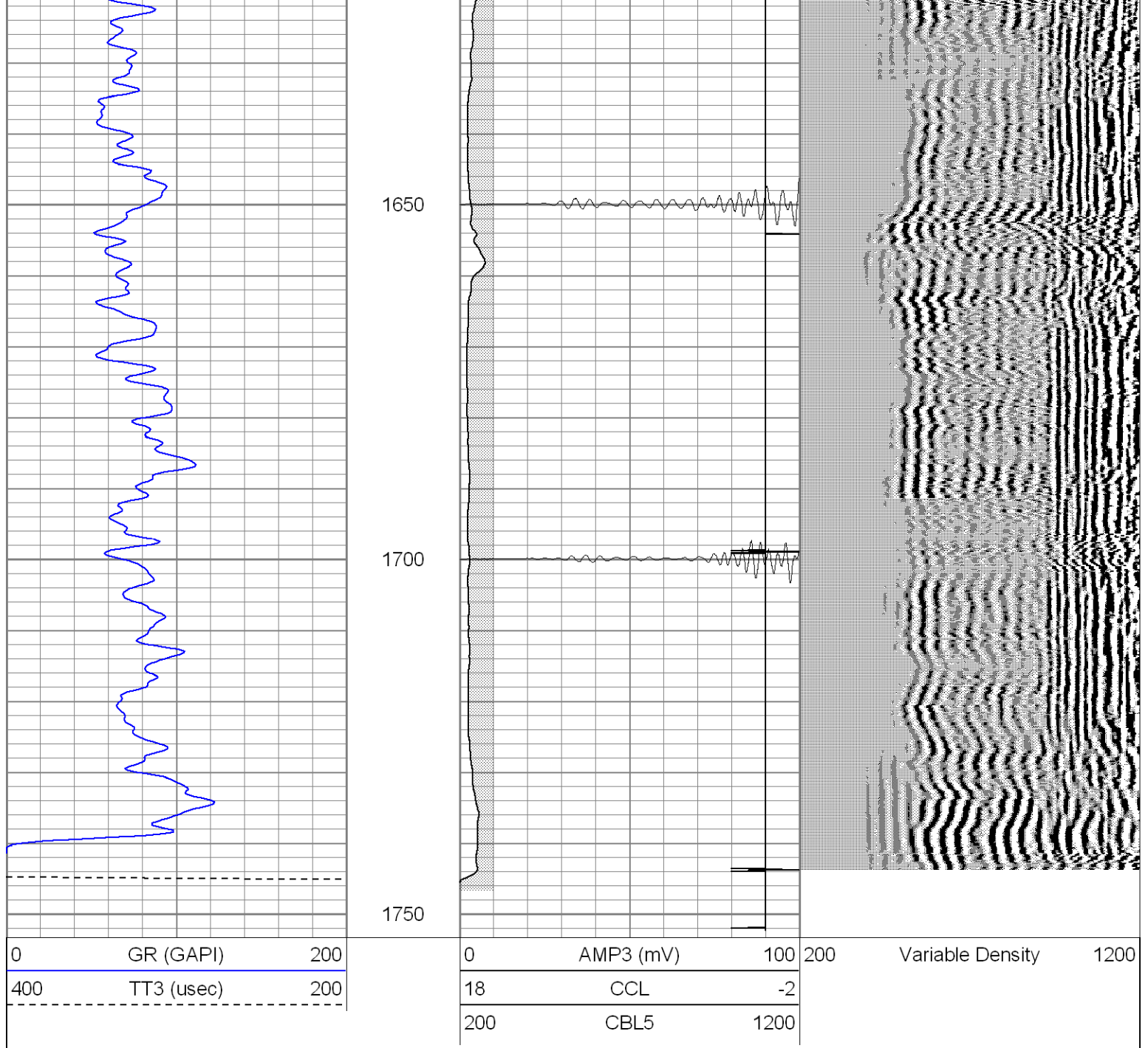
Black Lick, Pa.  
Mercer, Pa.  
Wooster, Oh.  
Cleveland, Ok.  
Trinidad, Co.

# Repeat Section

Database File: xtoac3512-090607b.db  
 Dataset Pathname: pass1  
 Presentation Format: cblrt  
 Dataset Creation: Thu Sep 06 09:15:07 2007 by Log Open-Cased 061129  
 Charted by: Depth in Feet scaled 1:240







### Calibration Report

Database File: xtohr2514-090607b.db  
 Dataset Pathname: pass5  
 Dataset Creation: Tue Sep 04 15:44:23 2007 by Log Open-Cased 061129

### Cement Bond Log Calibration Report

Serial Number:	Titan5		
Tool Model:	T5		
Performed:	Thu Sep 06 10:34:40 2007		
Depth:	0	ft	
Casing Diameter:	0	in	
	3' Spacing	5' Spacing	
Signal Zero:	0	0	mV
Calibrated Amplitude:	85	85	mV
Reading at Signal Zero:	0.01	0.01	V
Reading in Free Pipe:	1.1	1.25	V

Gain:	77.9817	68.5484
Offset:	-0.779817	-0.685484

Gamma Ray Calibration Report
------------------------------

Serial Number:	Titan5	
Tool Model:	T5	
Performed:	Tue Sep 04 15:44:27 2007	
Calibrator Value:	1.0	GAPI
Background Reading:	0.0	cps
Calibrator Reading:	1.0	cps
Sensitivity:	1.0000	GAPI/cps

[illegible]