

PSI		COMPENSATED DENSITY COMPENSATED NEUTRON DUAL INDUCTION	
PHOENIX SURVEYS, INC.			
Company		Merit Energy Company	
Well		Hall 28-5	
Field		Wattenberg	
County		Weld	
State		State	
Location		1130' FNL & 1460' FEL NW NE Sec. 28, Twp. 5N, Rge. 64W	
Permanent Datum		GL	
Log Measured From		KB	
Drilling Measured From		KB	
Date		November 29, 2005	
Run Number		1	
Depth Driller		6962	
Depth Logger		6961	
Bottom Logged Interval		6961	
Top Log Interval		Casing	
Casing Driller		396	
Casing Logger		396	
Bit Size		7-7/8"	
Type Fluid in Hole		Chem Gel	
Density / Viscosity		9.3 / 58	
pH / Fluid Loss		8.5 / 8.0	
Source of Sample		Flowline	
Rm @ Meas. Temp		3.22 @ 69° F	
Rmt @ Meas. Temp		2.57 @ 69° F	
Rmc @ Meas. Temp		3.36 @ 69° F	
Source of Rmt / Rmc		Measure / Calc	
Rm @ BHT		1.15 @ 202° F	
Time Circulation Stopped		0800	
Time Logger on Bottom		1700	
Maximum Recorded Temperature		202° F	
Equipment Number		4300	
Location		Brighton, CO	
Recorded By		Shaun Schuman	
Witnessed By		Dan Green	

<<< Fold Here >>>

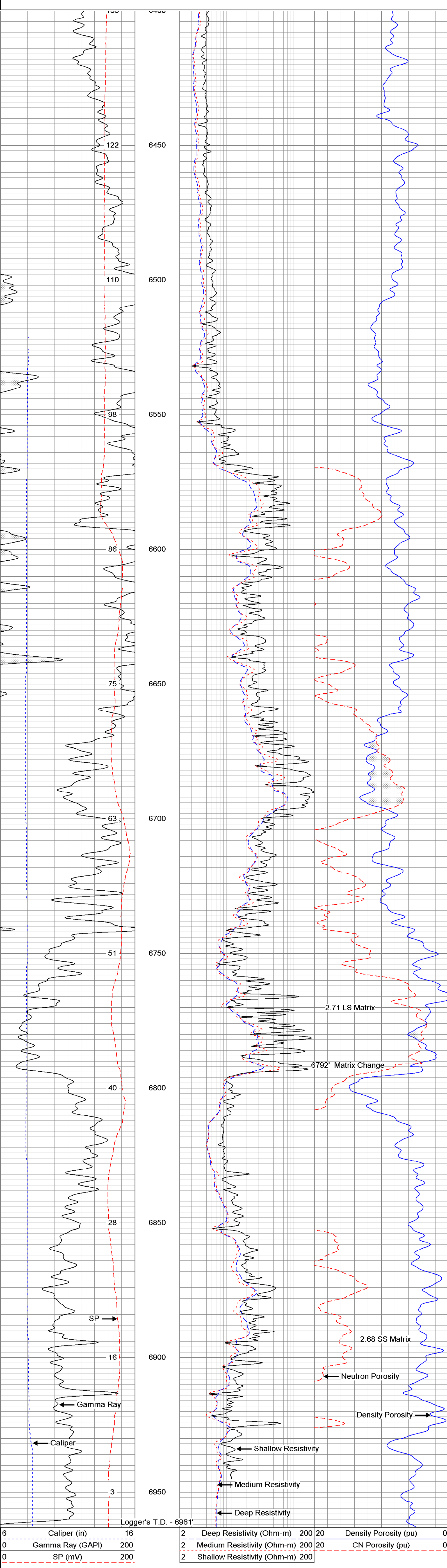
All interpretations are opinions based on inferences from electrical or other measurements and we cannot and do not guarantee the accuracy or correctness of any interpretation, and we shall not, except in the case of gross or willful negligence on our part, be liable or responsible for any loss, costs, damages, or expenses incurred or sustained by anyone resulting from any interpretation made by any of our officers, agents or employees. These interpretations are also subject to our general terms and conditions set out in our current Price Schedule.

Comments

Annular volume calculated for 4-1/2" casing
Patterson UTI Rig 34
Thank you for using Phoenix Surveys!!
API #: 05-123-23412-00

Database File: 5688 db
Dataset Pathname: pass4
Presentation Format: PDC
Dataset Creation: Tue Nov 29 17:21:12 2005 by Log Warrior Version 6.6
Charted by: Depth in Feet scaled 1:240

6	Caliper (in)	16	2	Deep Resistivity (Ohm-m)	200	20	Density Porosity (pu)	0
0	Gamma Ray (GAPI)	200	2	Medium Resistivity (Ohm-m)	200	20	CN Porosity (pu)	0
0	SP (mV)	200	2	Shallow Resistivity (Ohm-m)	200			



6	Caliper (in)	16	2	Deep Resistivity (Ohm-m)	200	20	Density Porosity (pu)	0
0	Gamma Ray (GAPI)	200	2	Medium Resistivity (Ohm-m)	200	20	CN Porosity (pu)	0
0	SP (mV)	200	2	Shallow Resistivity (Ohm-m)	200			