



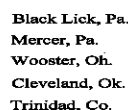
K.B.	---
D.F.	---
G.L.	8037

<<< Fold Here >>>

---

Comments

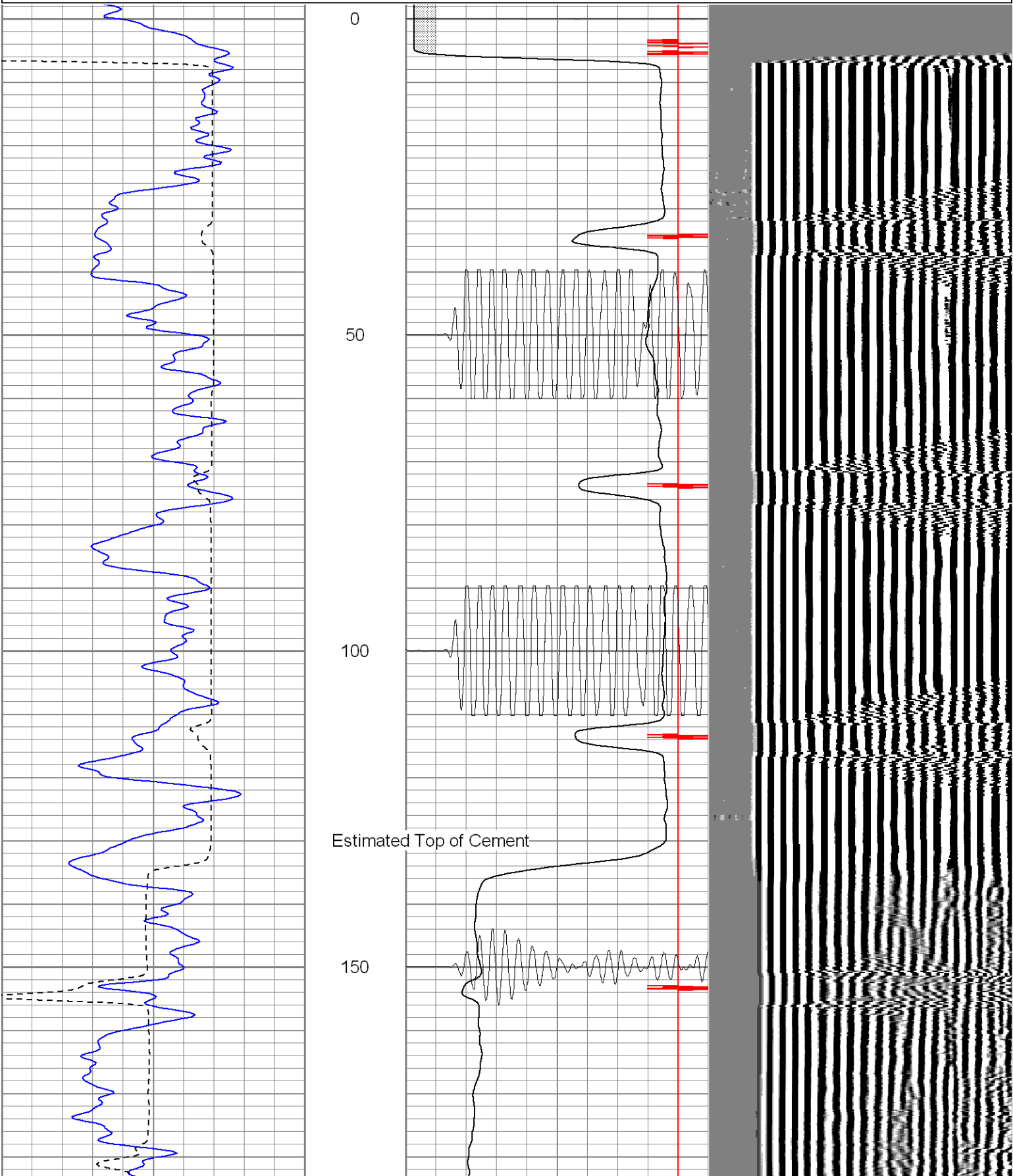
Lorencito Gate, at Y stay right, take 2nd right, drive to T, turn right, 1st left to location.

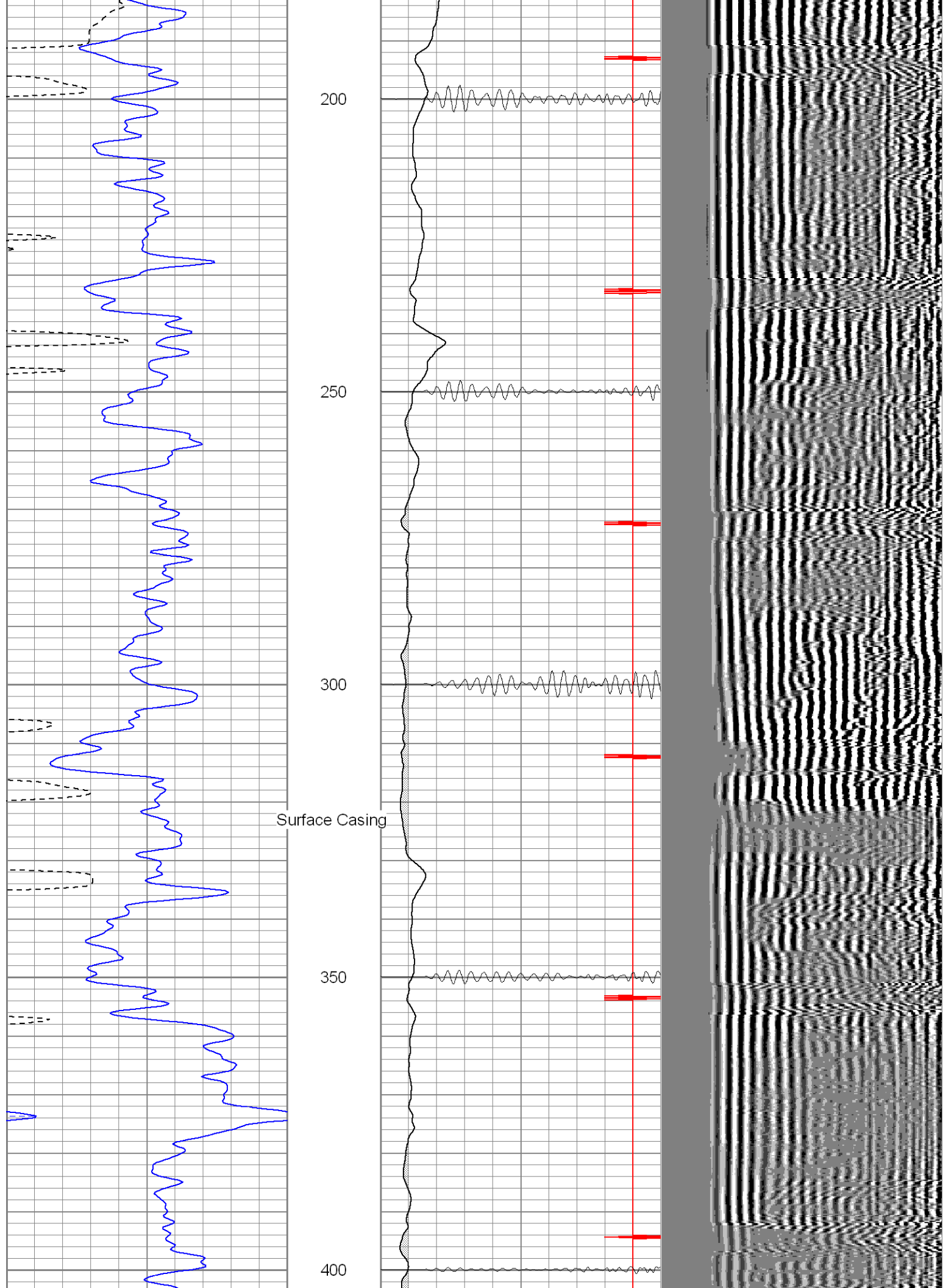


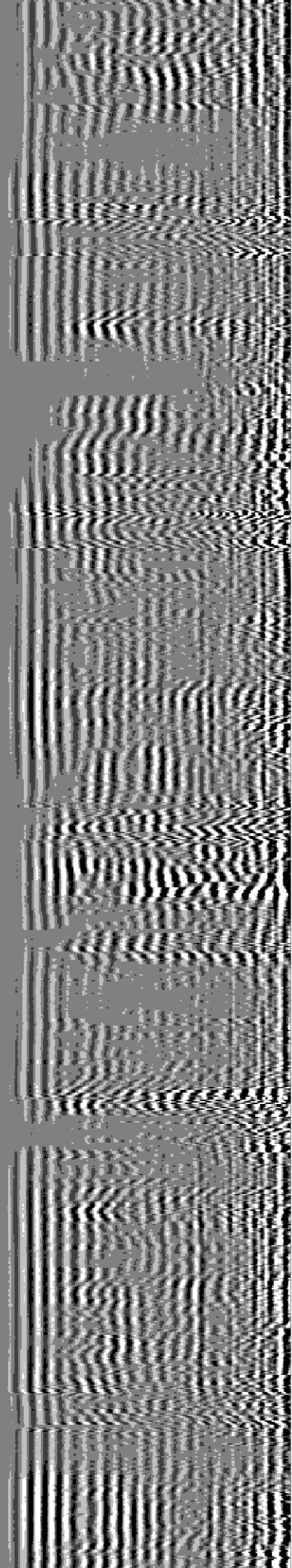
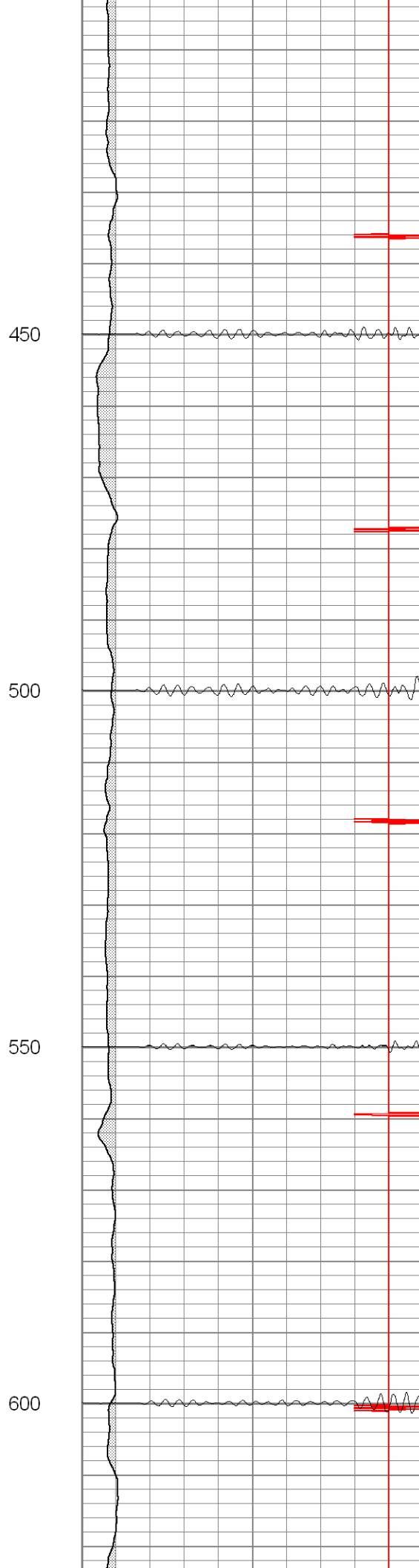
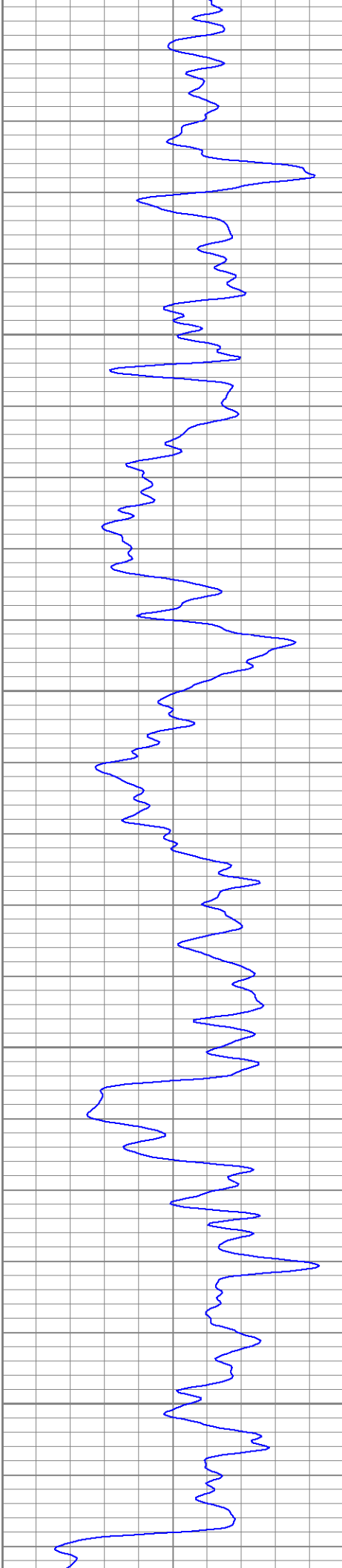
# Main Pass

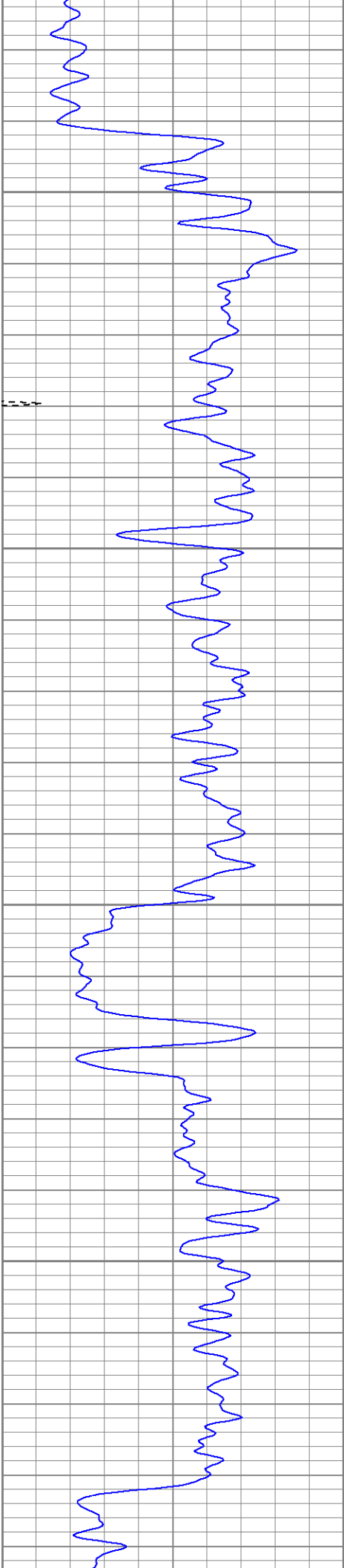
Database File: vprc137b13007.db  
Dataset Pathname: pass2  
Presentation Format: cblrt  
Dataset Creation: Tue Jan 30 09:31:55 2007 by Log Warrior 7.0 STD Cas  
Charted by: Depth in Feet scaled 1:240

0	GR (GAPI)	200	0	AMP3 (mV)	100	200	Variable Density	1200
400	TT3 (usec)	200	18	CCL	-2			
			200	CBL5	1200			







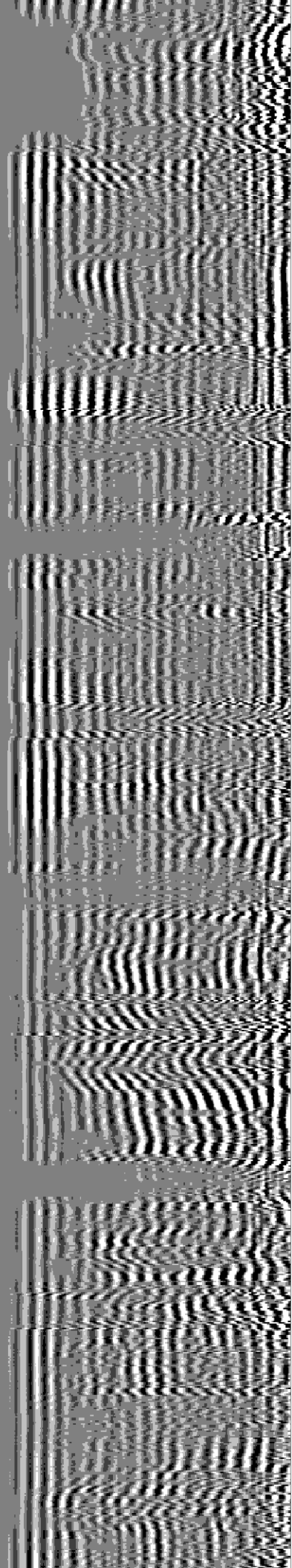
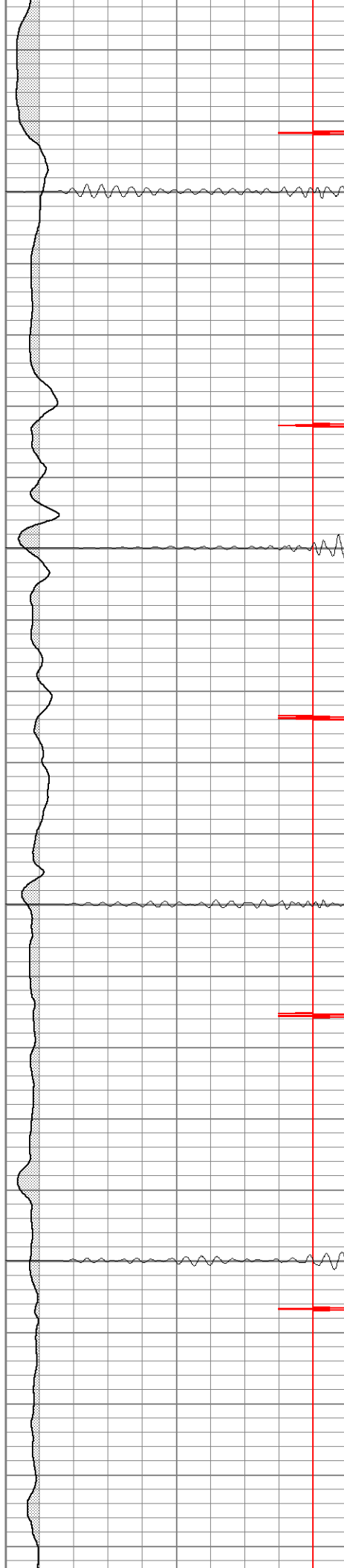


650

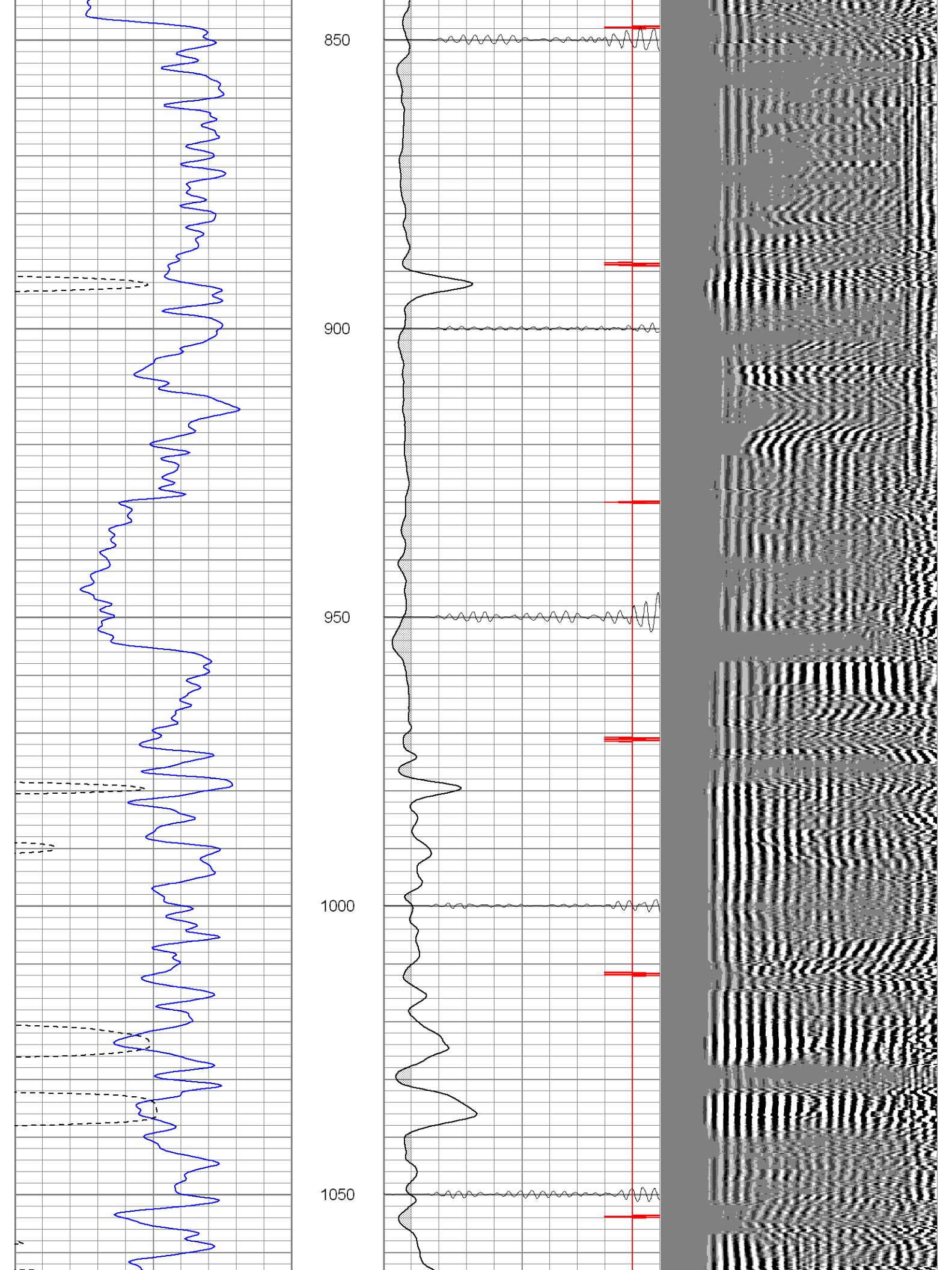
700

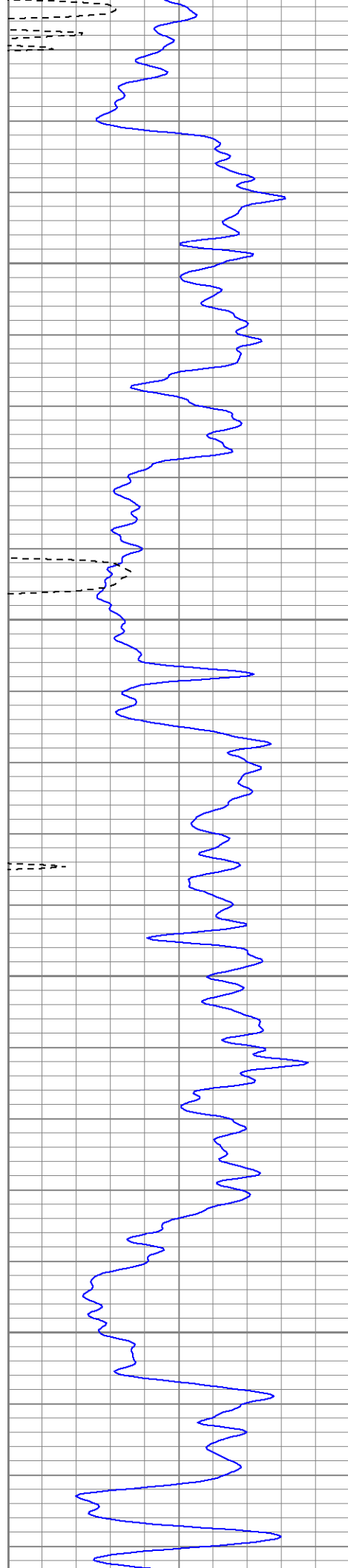
750

800







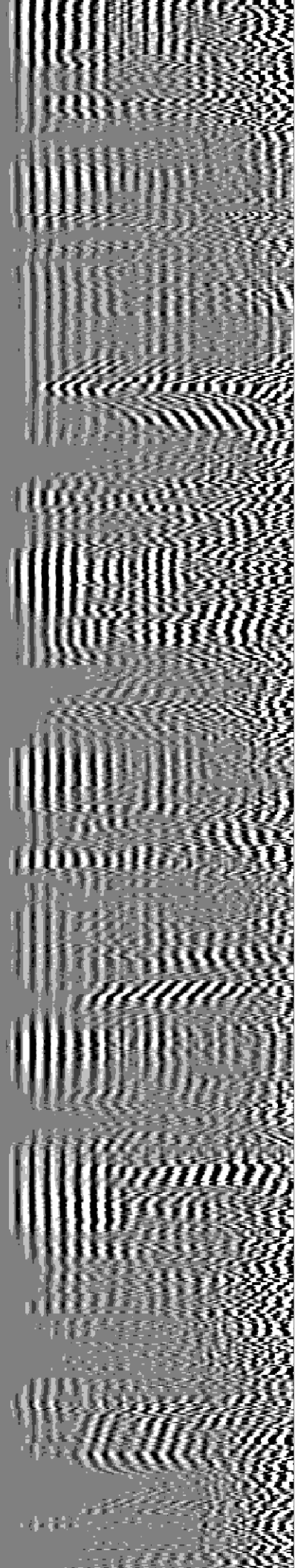


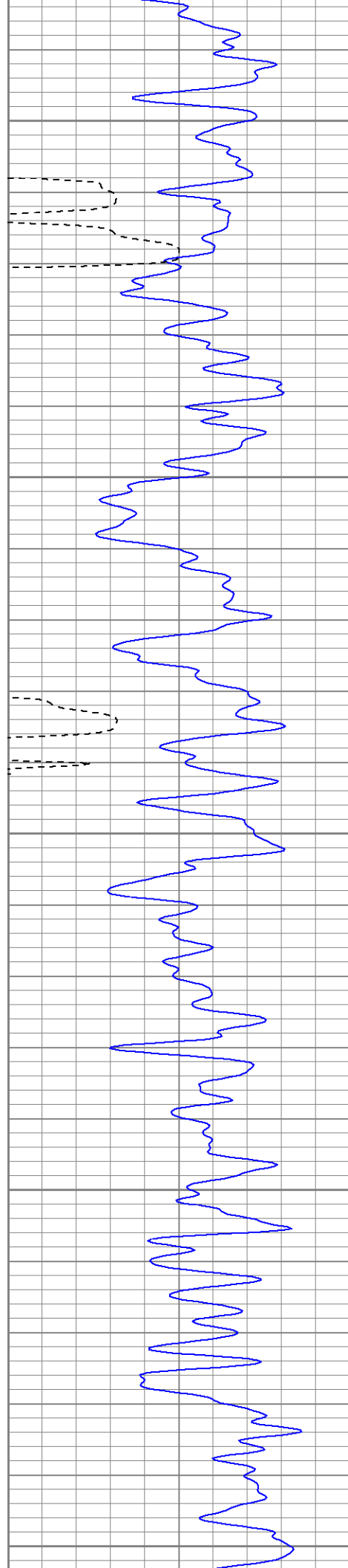
1100

1150

1200

1250





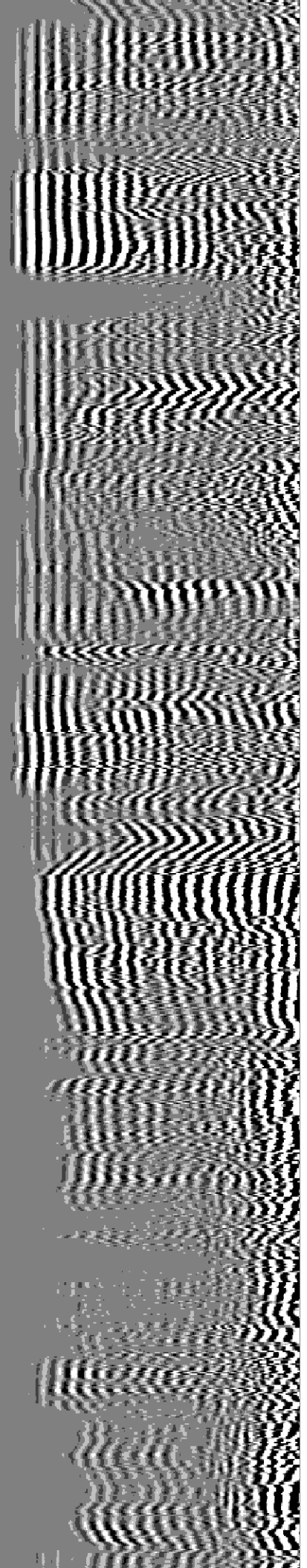
1300

1350

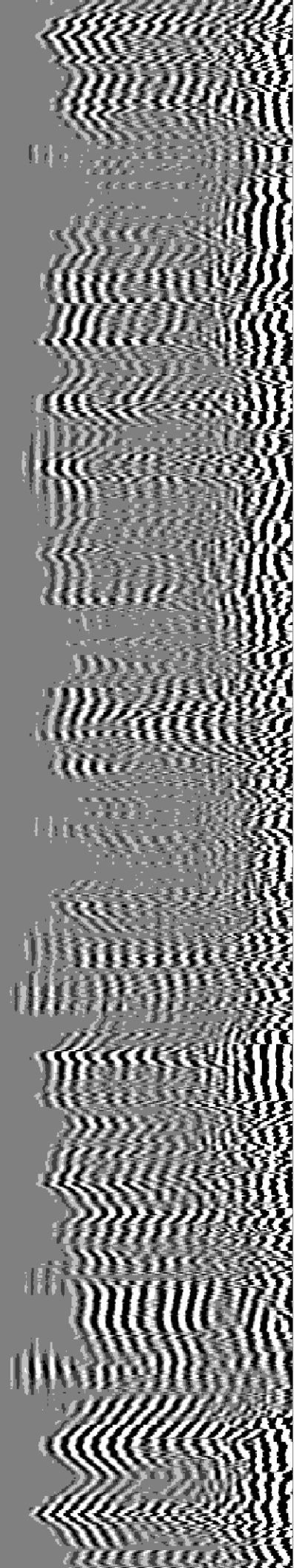
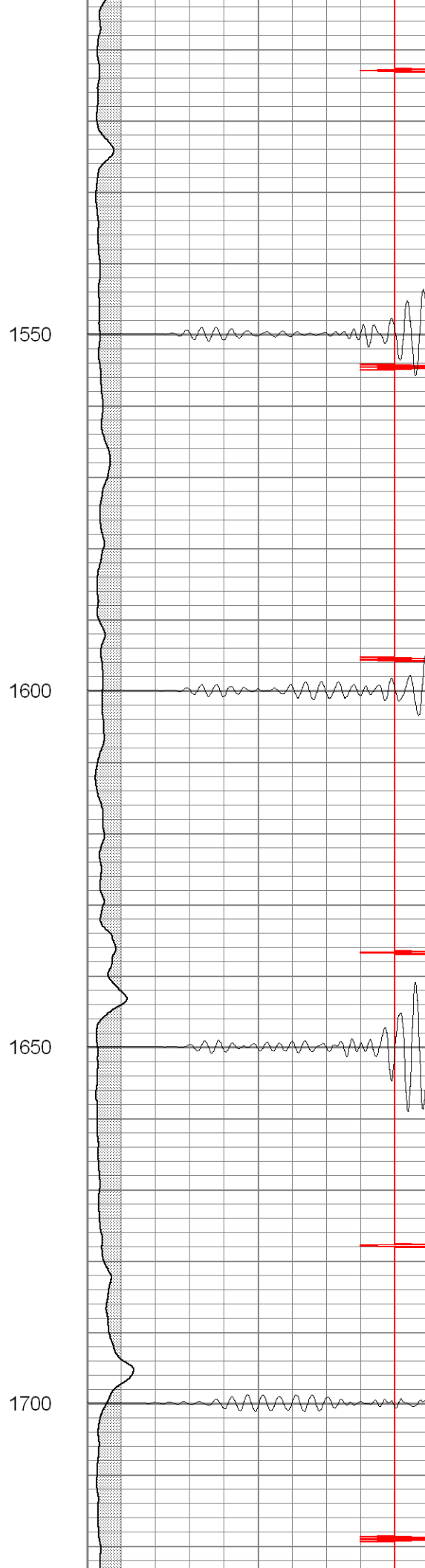
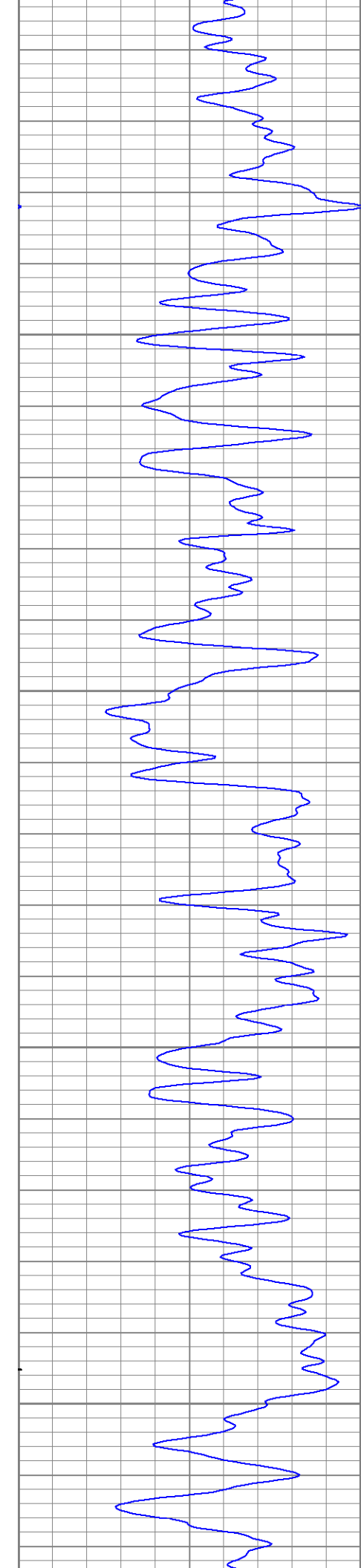
1400

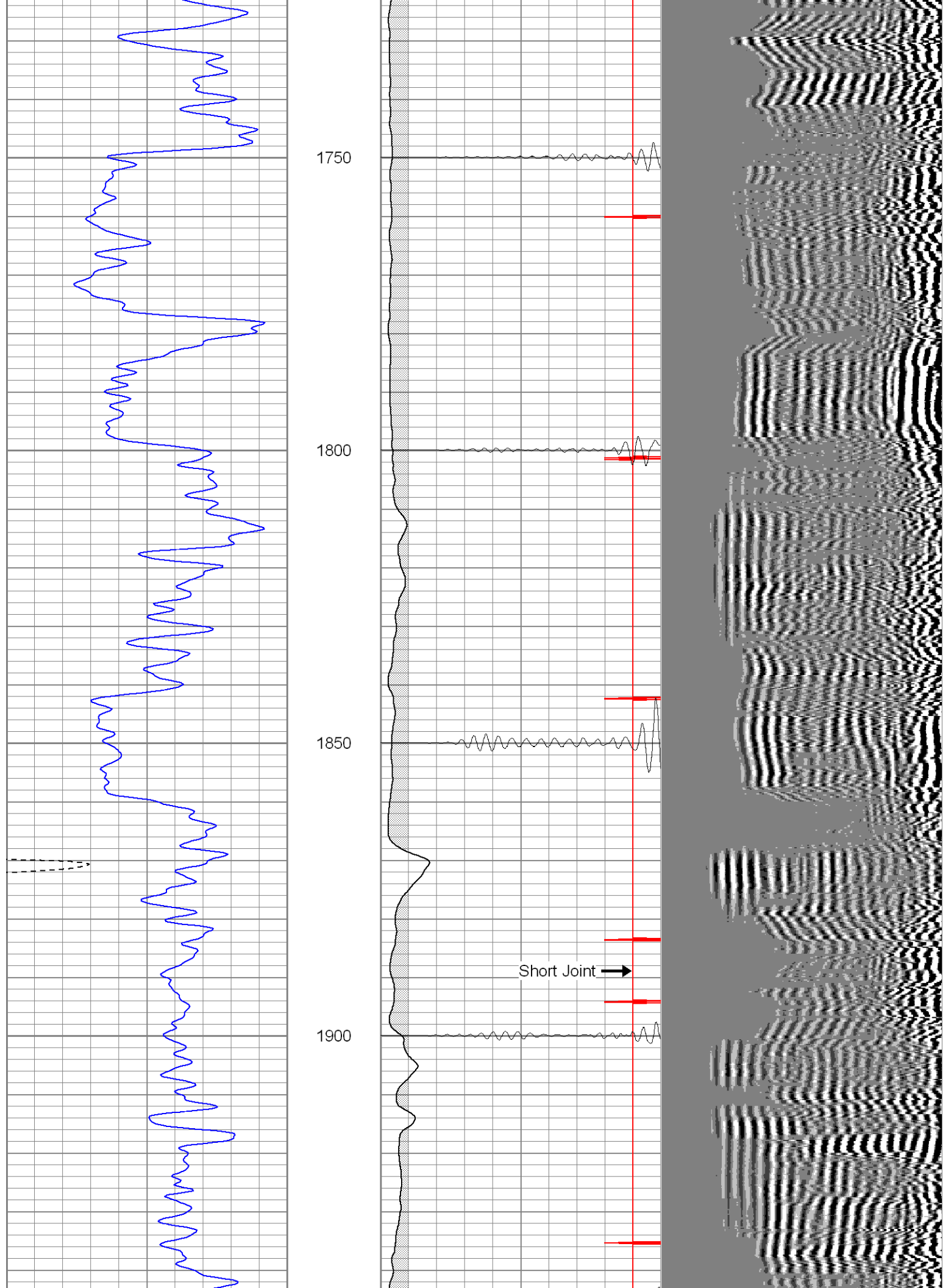
1450

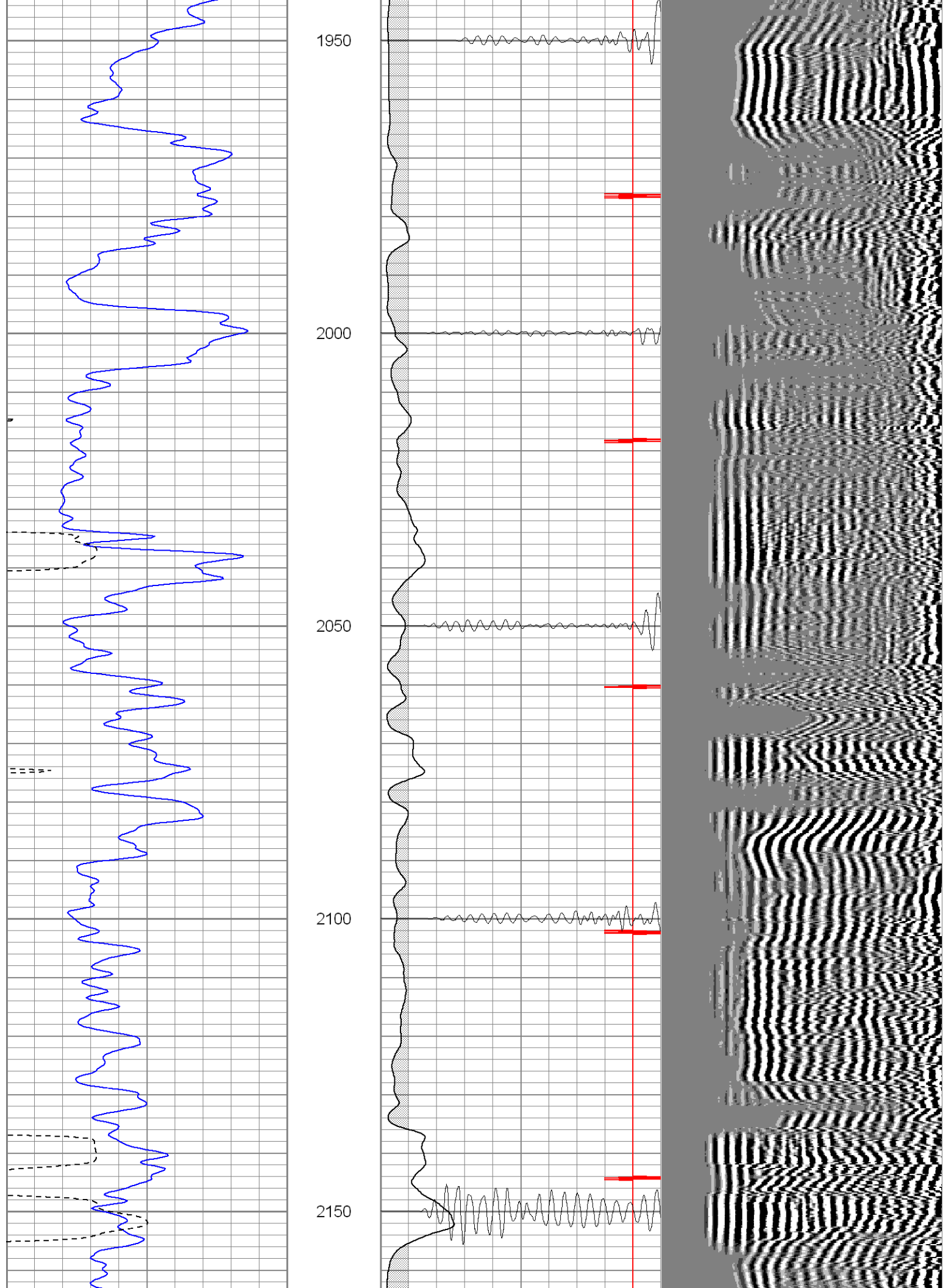
1500

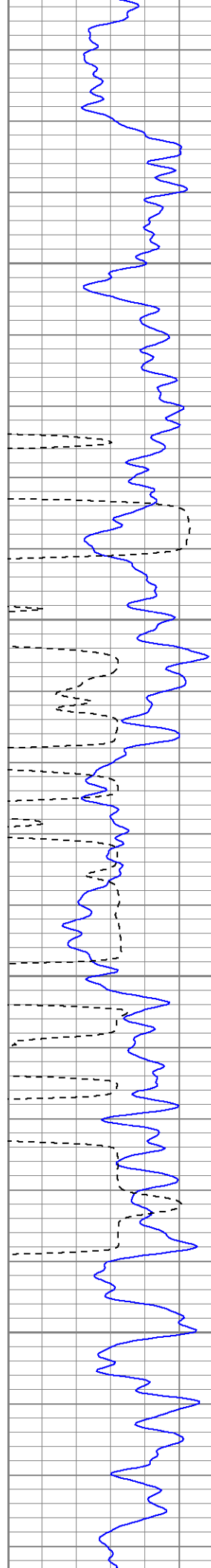










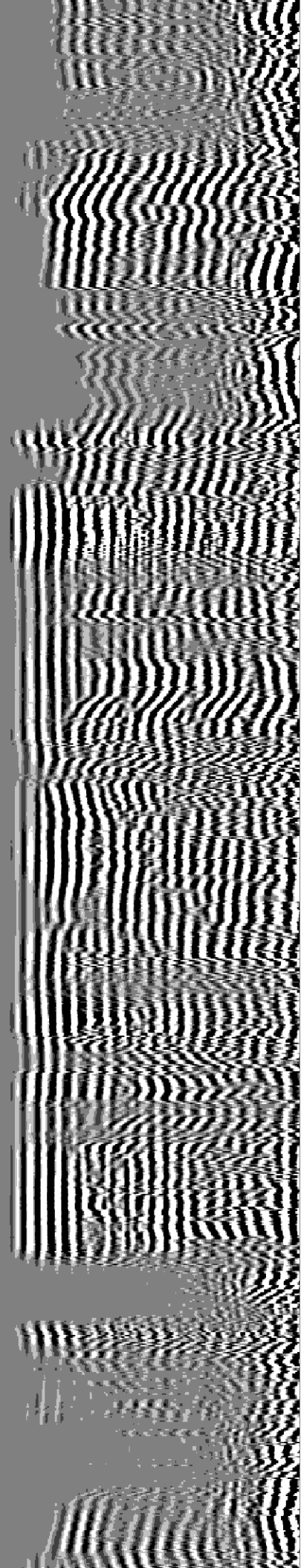
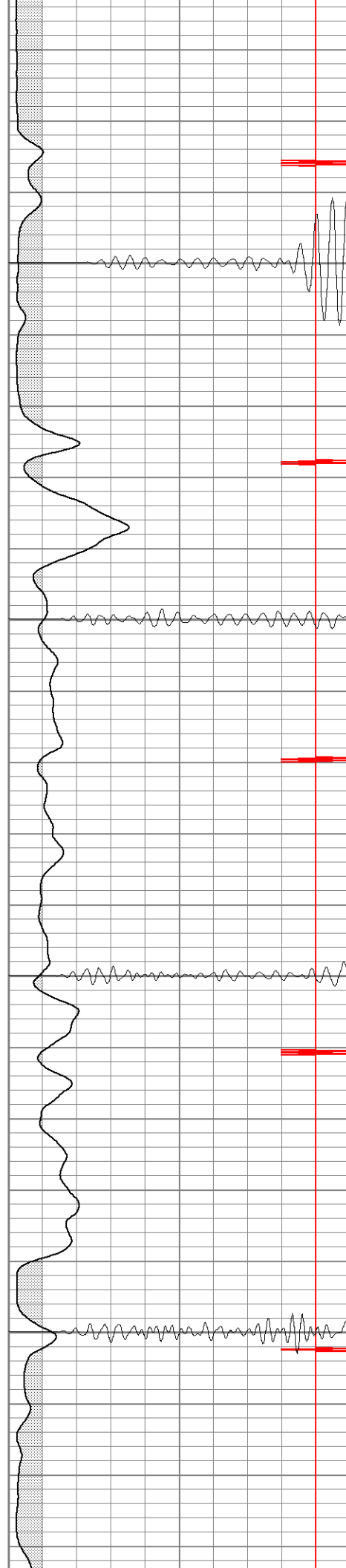


2200

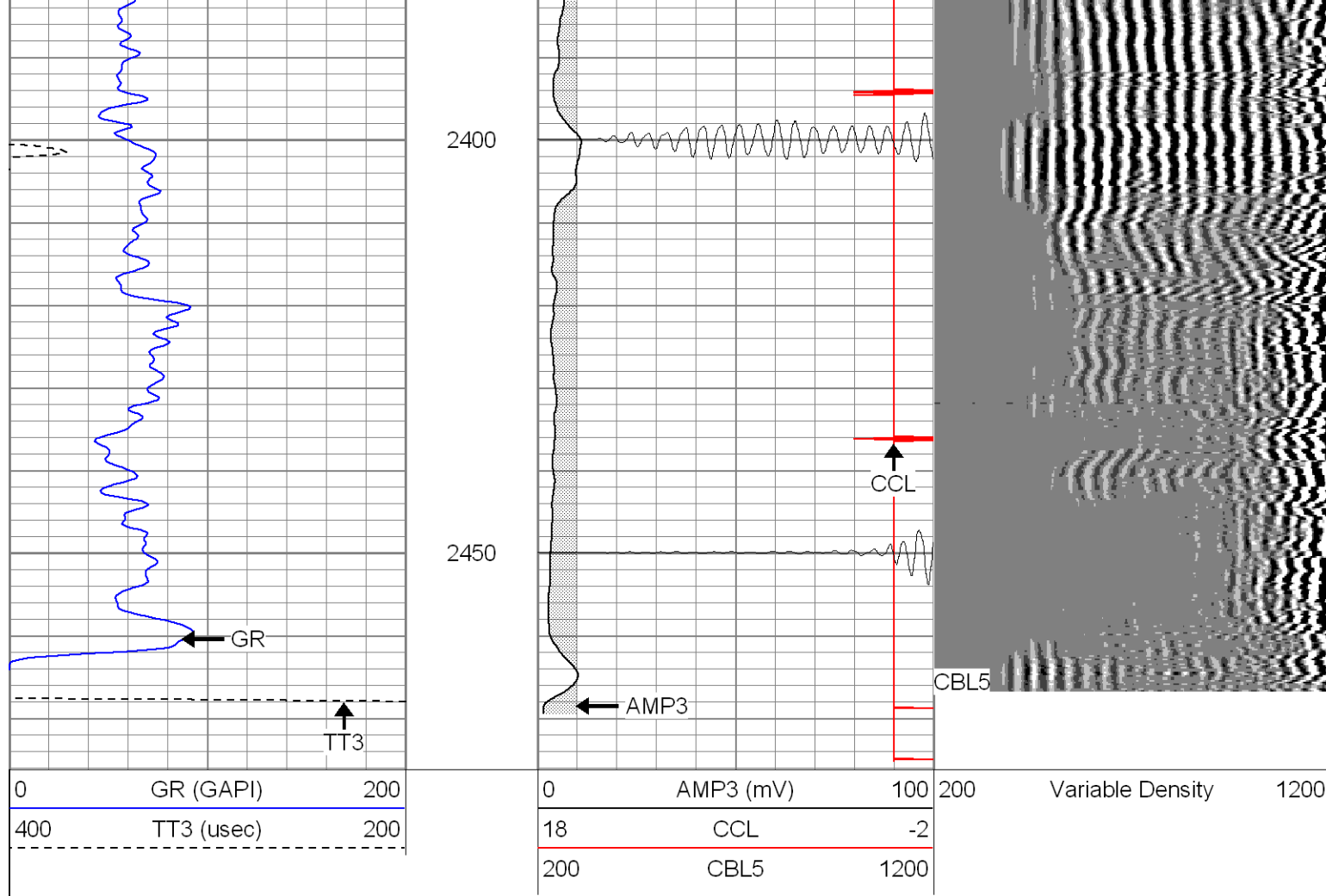
2250

2300

2350







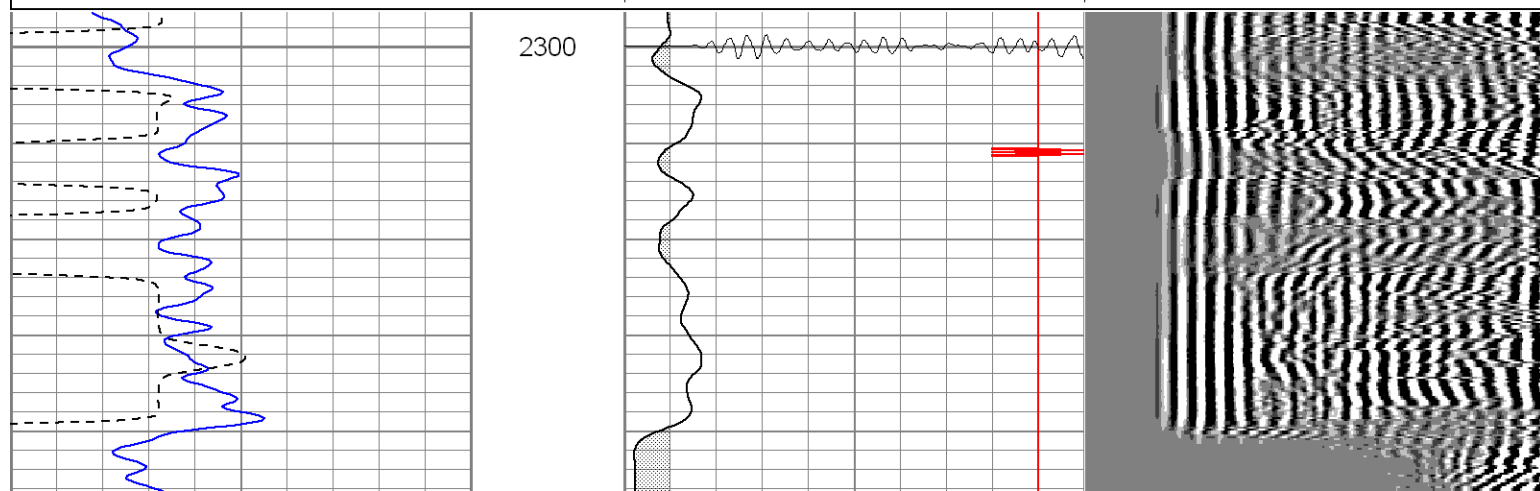
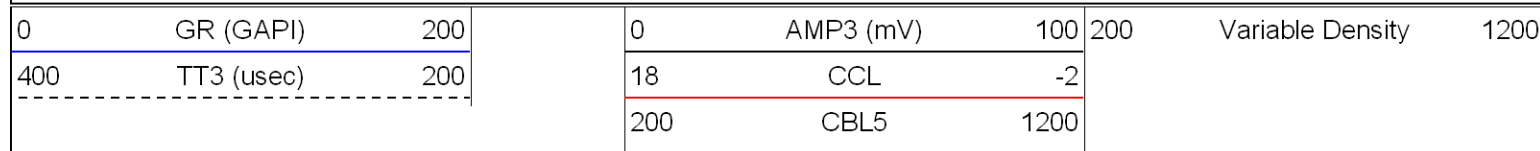


**SUPERIOR**  
WELL SERVICES

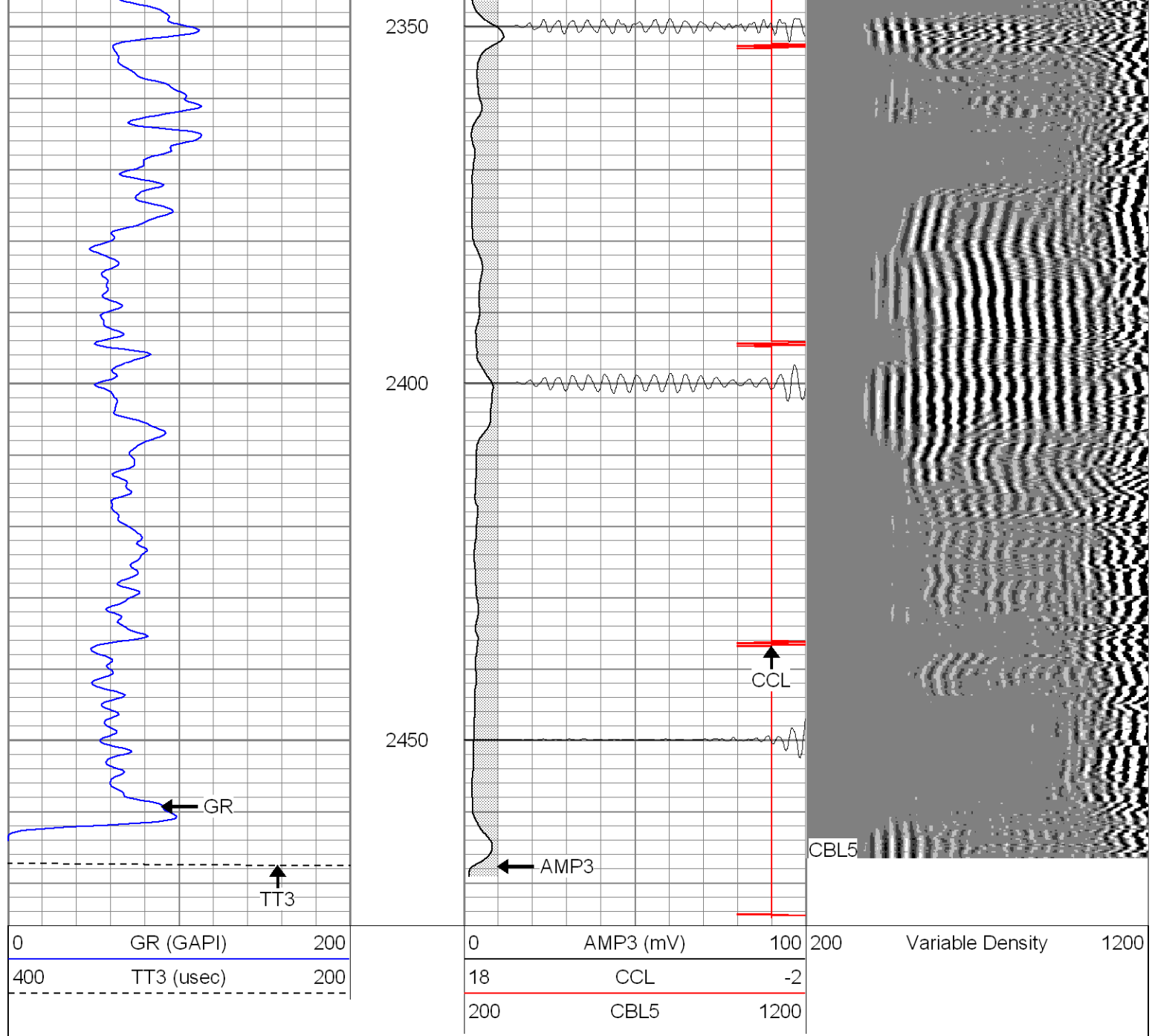
Black Lick, Pa.  
Mercer, Pa.  
Wooster, Oh.  
Cleveland, Ok.  
Trinidad, Co.

# Repeat Section

Database File: vprc137b13007.db  
 Dataset Pathname: pass1  
 Presentation Format: cblrt  
 Dataset Creation: Tue Jan 30 09:26:29 2007 by Log Warrior 7.0 STD Cas  
 Charted by: Depth in Feet scaled 1:240







### Cement Bond Log Calibration Report

Serial Number:	Titan5		
Tool Model:	2		
Performed:	Mon Jan 29 08:49:30 2007		
Depth:	210.983	ft	
Casing Diameter:	5.5	in	
	3' Spacing	5' Spacing	
Signal Zero:	0	0	mV
Calibrated Amplitude:	85	85	mV
Reading at Signal Zero:	-0.02	0.00866699	V
Reading in Free Pipe:	1.11	1.2	V
Gain:	75.2212	71.3486	
Offset:	1.50442	-0.618378	

### Gamma Ray Calibration Report

Serial Number:	Titan5
Tool Model:	T2
Performed:	Mon Nov 20 09:53:51 2006

Calibrator Value:	1.0	GAPI
-------------------	-----	------

Background Reading:	0.0	cps
---------------------	-----	-----

Calibrator Reading:	1.0	cps
---------------------	-----	-----

Sensitivity:	1.2500	GAPI/cps
--------------	--------	----------