

BRAN-DEX

GAMMA RAY-C.C.L.

WIRELINE SERVICES

Company				ENCANA ENERGY RESOURCES, INC.			
Well				WOOLEY#33-8			
Field				WATTENBERG			
County				WELD			
State				COLORADO			
Location:				API # :		Other Services	
SEC 8 TWP 1N RGE 68W				2034FSL&2021FEL NW SE			
Permanent Datum		G.L.		Elevation		K.B. 5102	
Log Measured From		K.B.				D.F. 5101	
Drilling Measured From		K.B.				G.L. 5091	
Date				MAY-24-2005			
Run Number		ONE					
Depth Driller		8430					
Depth Logger		8397					
Bottom Logged Interval		8396					
Top Log Interval		7280					
Open Hole Size							
Type Fluid							
Density / Viscosity							
Max. Recorded Temp.							
Estimated Cement Top							
Time Well Ready							
Time Logger on Bottom							
Equipment Number		#429					
Location		STERLING					
Recorded By		GARDNER					
Witnessed By		MITCH STEINKE					
Borehole Record				Tubing Record			
Run Number		Bit		From		To	

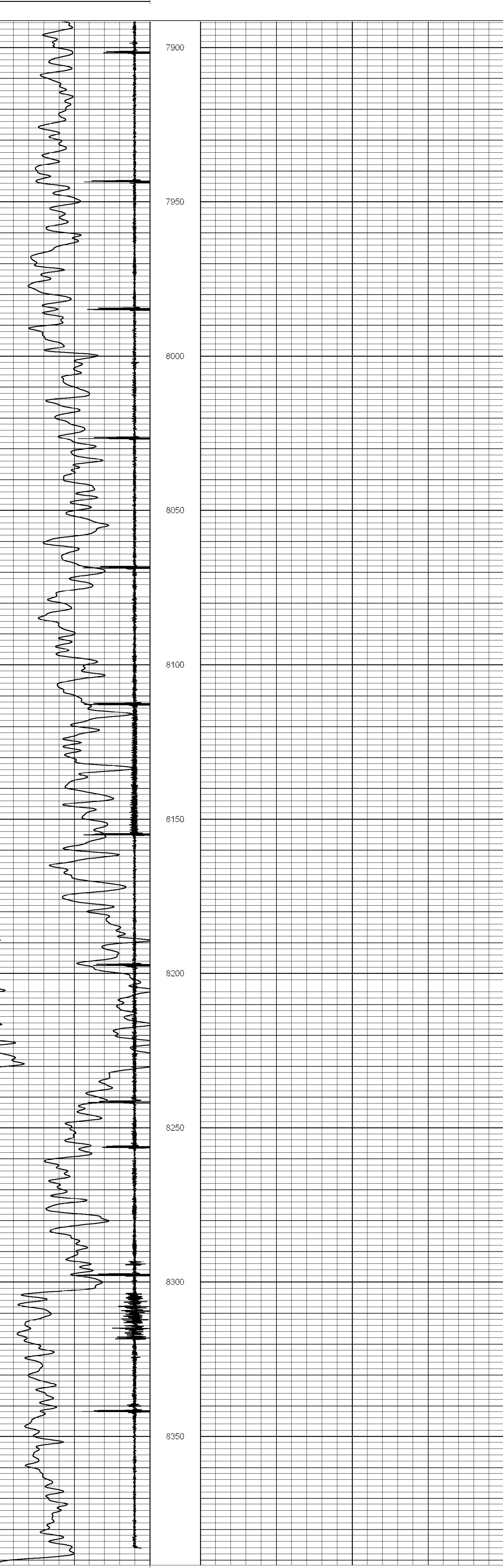
<<< Fold Here >>>

All interpretations are opinions based on inferences from electrical or other measurements and we cannot and do not guarantee the accuracy or correctness of any interpretation, and we shall not, except in the case of gross or willful negligence on our part, be liable or responsible for any loss, costs, damages, or expenses incurred or sustained by anyone resulting from any interpretation made by any of our officers, agents or employees. These interpretations are also subject to our general terms and conditions set out in our current Price Schedule.

Comments

Database File: wooley 33-8.db
Dataset Pathname: pass8
Presentation Format: gr-ccl
Dataset Creation: Tue May 24 15:30:56 2005 by Log Warrior 7.0 STD Cas
Charted by: Depth in Feet scaled 1:240

9	CCL	-1
0	GR (GAPI)	150



9	CCL	-1
0	GR (GAPI)	150