

Company		Pioneer Natural Resources	
Well	Yellowknife 11-2		
Field	Purgatorie River		
County	Las Animas	State	Colorado
Location:		AP1 # : 05-071-08189-00	
SEC 2 TWP 35S RGE 65W		817' FNL & 709' FWL	
Permanent Datum	Ground Level	Elevation	7455'
Log Measured From	Kelly Bushing 4' Above G.L.	Elevation	7455'
Drilling Measured From	Kelly Bushing	Elevation	7455'
Other Services		Dev. Survey	
Date	12/16/04		
Run Number	One		
Depth Driller	1645'		
Depth Logger	1625'		
Bottom Logged Interval	1621'		
Top Log Interval	Surface		
Open Hole Size	7 7/8"		
Type Fluid	Water		
Density / Viscosity	////		
Max. Recorded Temp.	113 DEG F		
Estimated Cement Top	21'		
Time Well Ready	Portable Mast		
Time Logger on Bottom	13:52		
Equipment Number	T244		
Location	Trinidad		
Recorded By	Allen		
Witnessed By			
Borehole Record		Tubing Record	
Run Number	Bit	From	To
		Size	Weight
		From	To
Casing Record	Size	Wgt/Ft	Top
Surface String	8 5/8"		00
Prot. String			254'
Production String	5 1/2"		00
Liner			N/A

<<< Fold Here >>>

All interpretations are opinions based on inferences from electrical or other measurements and we cannot and do not guarantee the accuracy or correctness of any interpretation, and we shall not, except in the case of gross or willful negligence on our part, be liable or responsible for any loss, costs, damages, or expenses incurred or sustained by anyone resulting from any interpretation made by any of our officers, agents or employees. These interpretations are also subject to our general terms and conditions set out in our current Price Schedule.

Comments

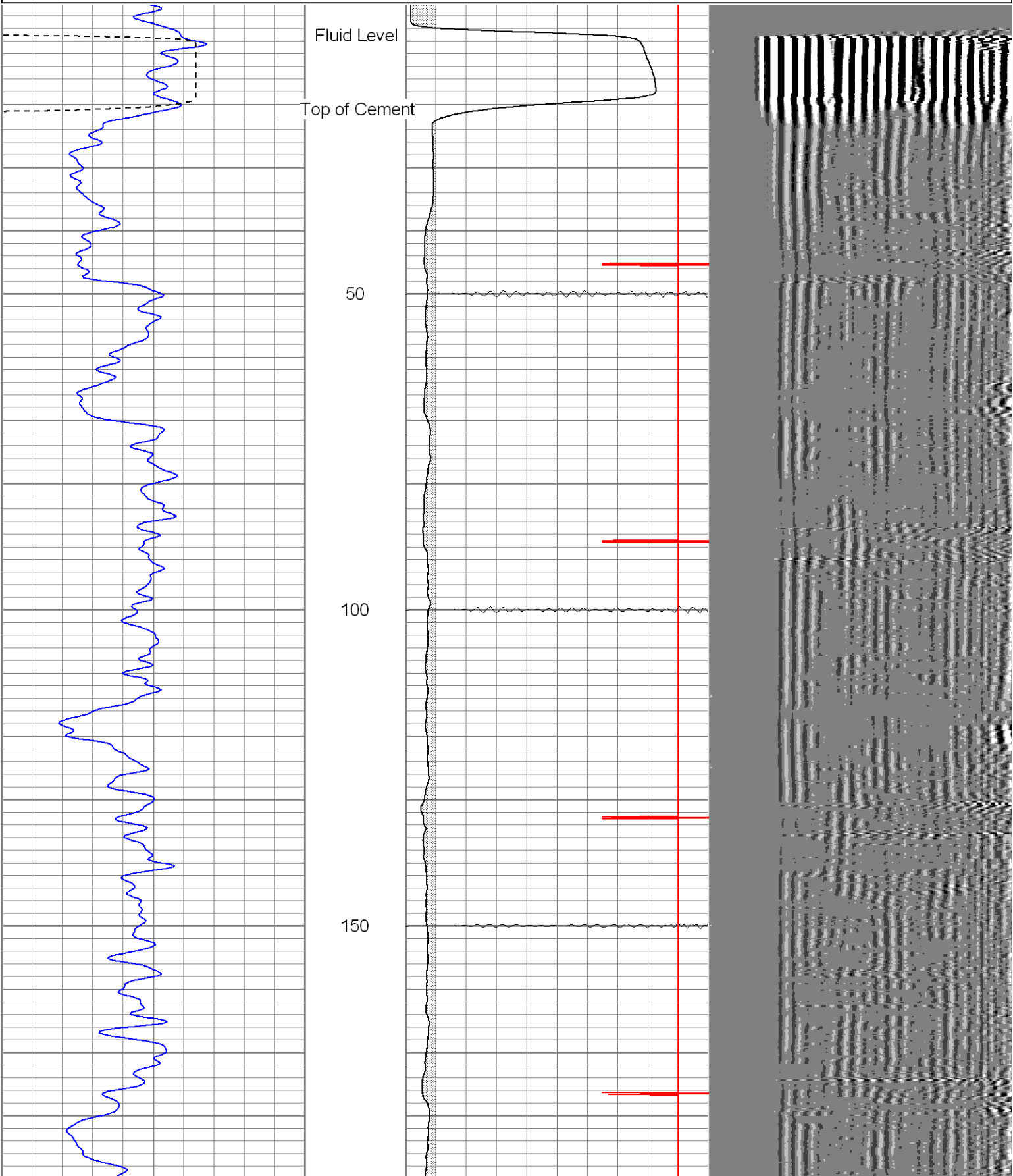
1 Degree of Deviation at Logger TD.

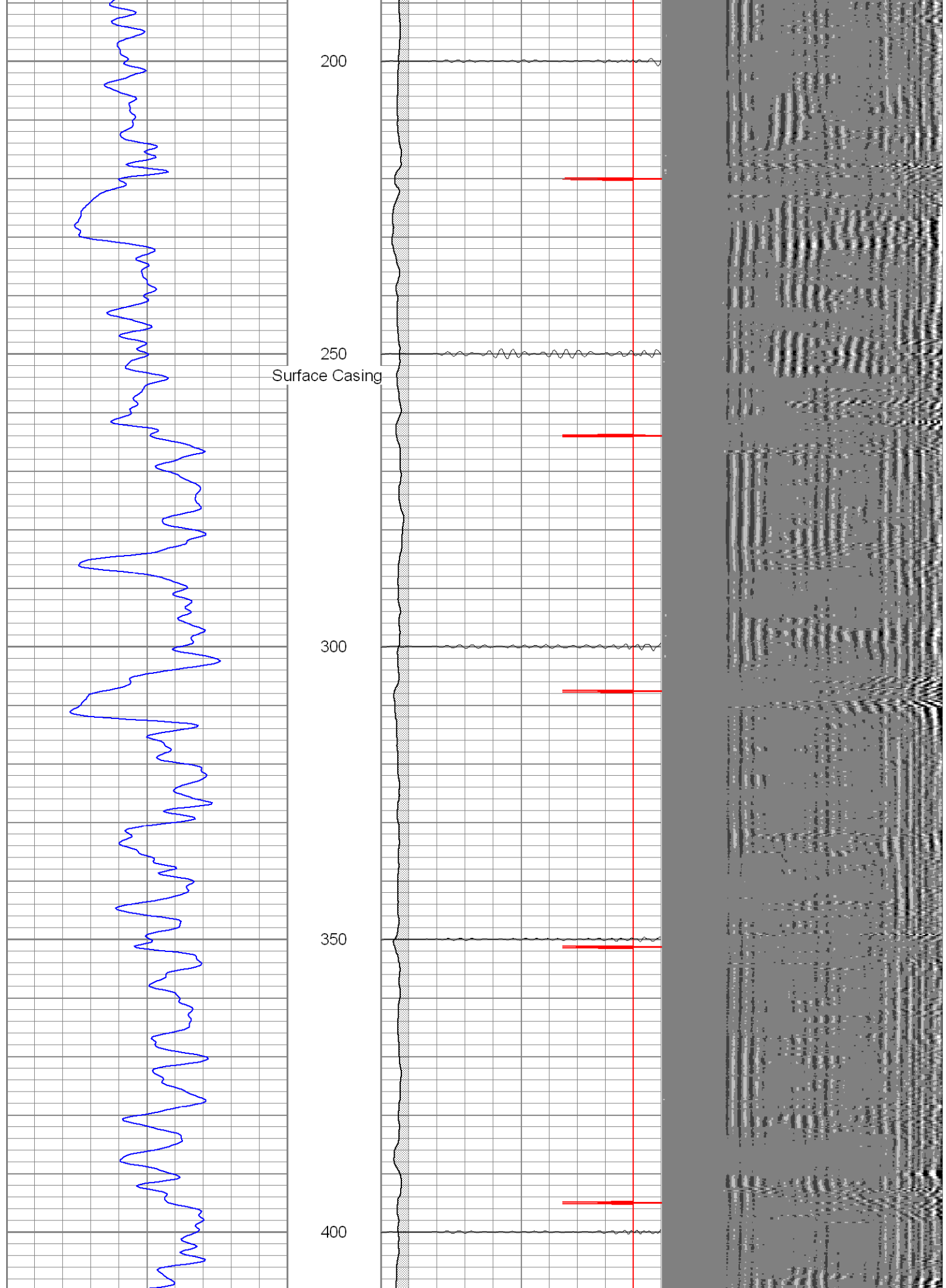
Well Directions:

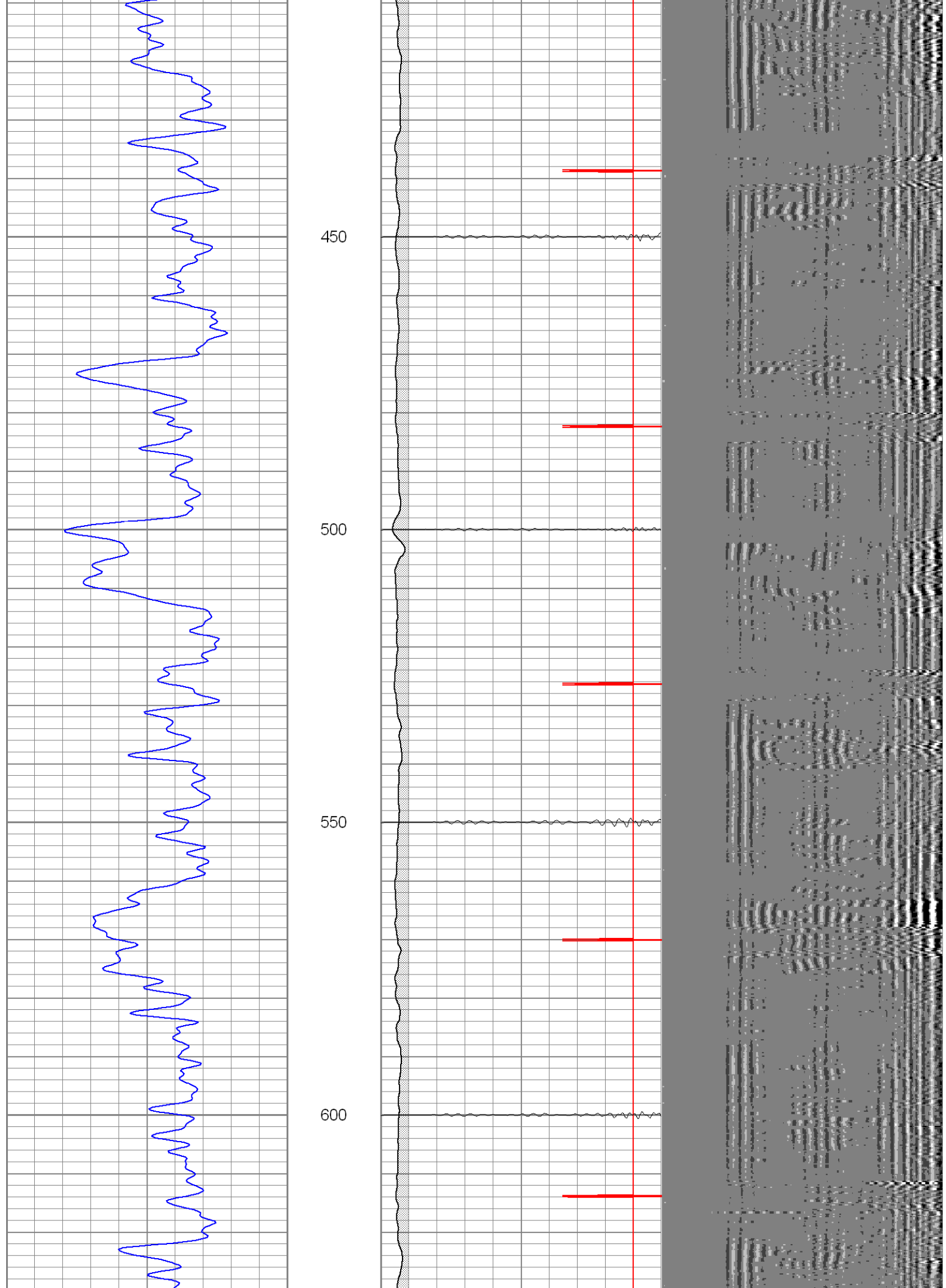
Long Canyon-Left Before 4th gate-Across Creek-Stay Left-At "Y" Take Right-Go To Top of Hill-Turn Right-Go Straight Through Location-At Top of Hill Turn Right-Turn at 1st Left-Follow Rd. to 1st Location on Right.

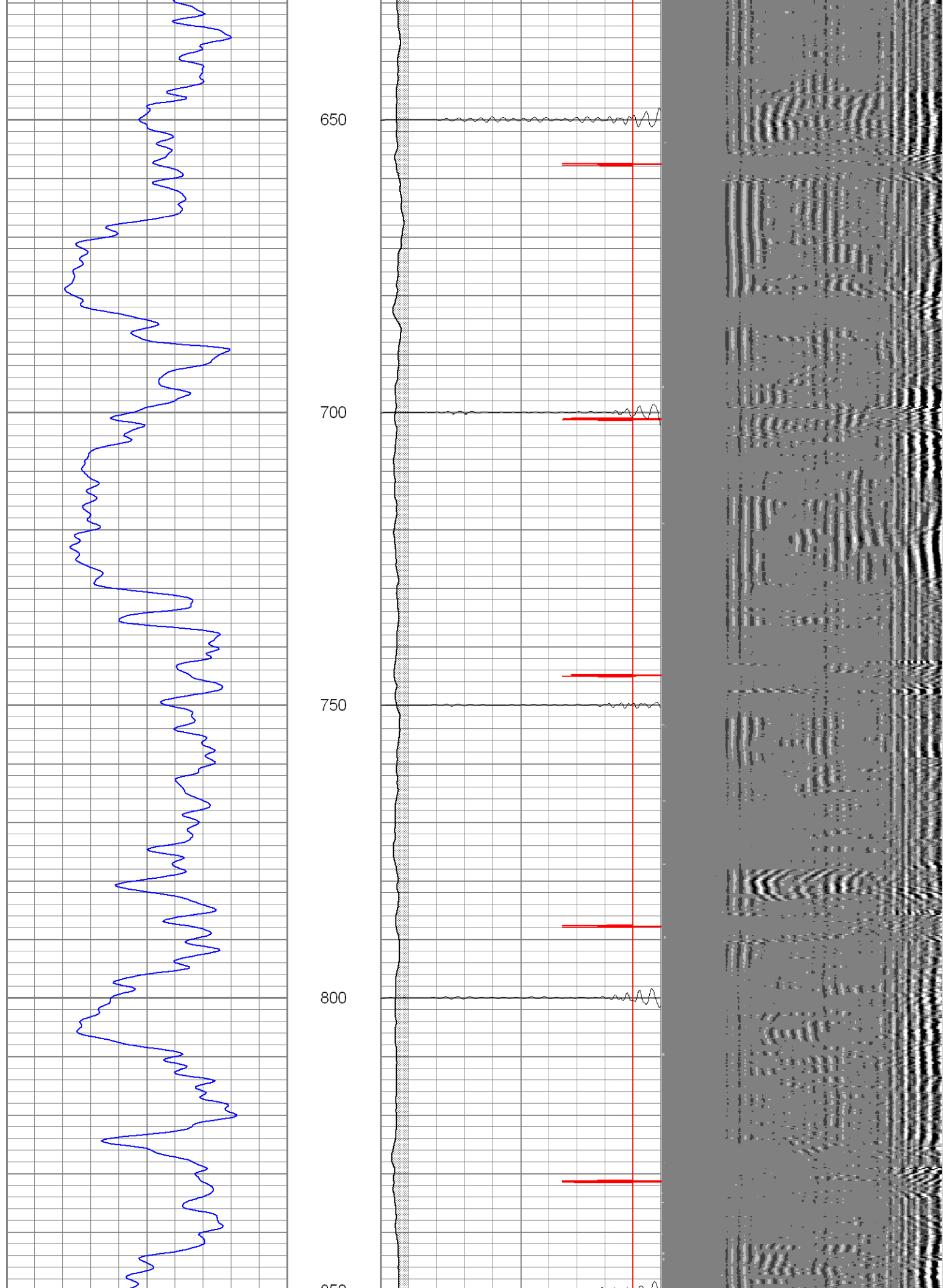
Database File: yellowknife121604b.db
Dataset Pathname: pass2
Presentation Format: cblrt
Dataset Creation: Thu Dec 16 14:04:36 2004 by Log Warrior 7.0 STD Cas
Charted by: Depth in Feet scaled 1:240

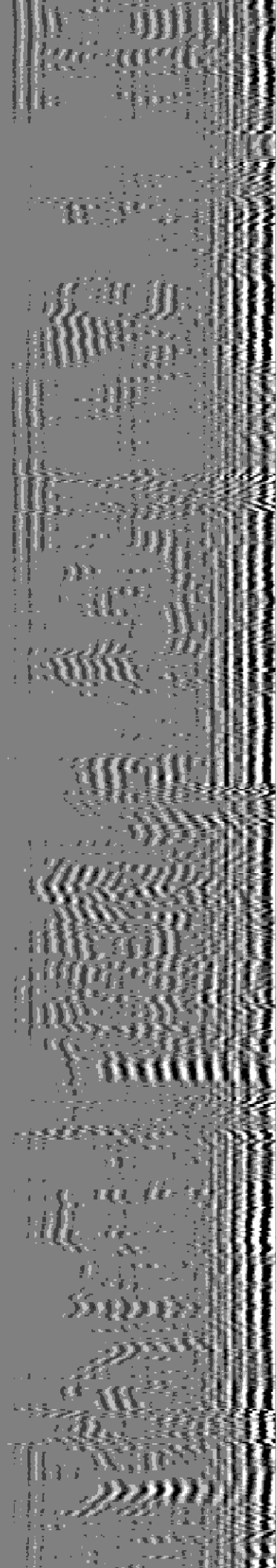
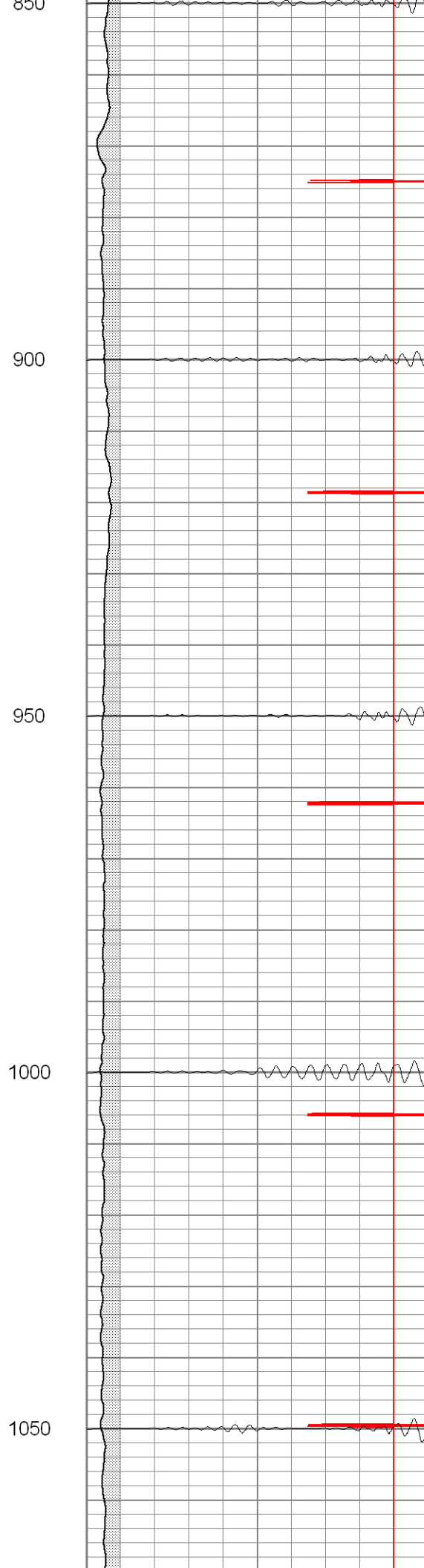
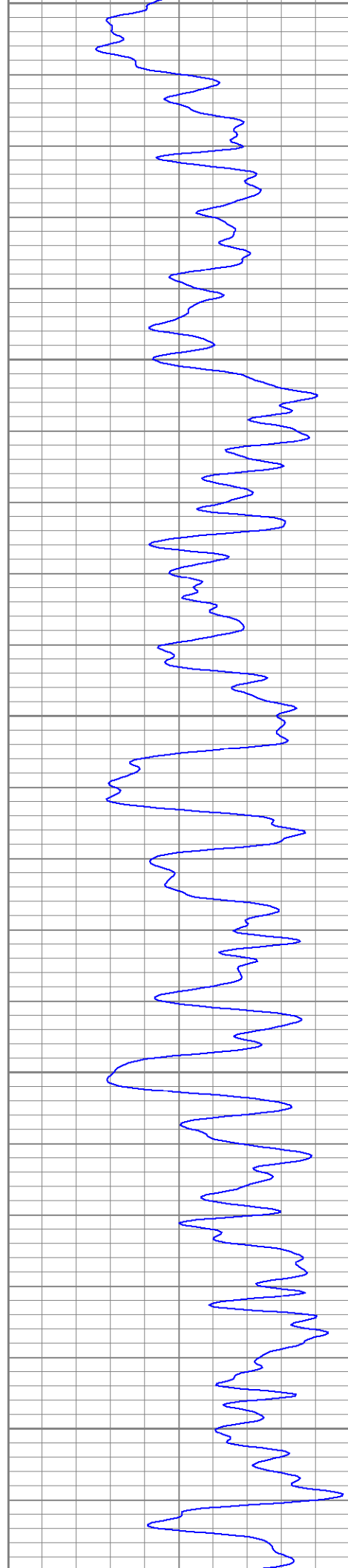
0	GR (GAPI)	200	0	AMP3 (mV)	100	200	Variable Density	1200
400	TT3 (usec)	200	18	CCL	-2			
			200	CBL5	1200			

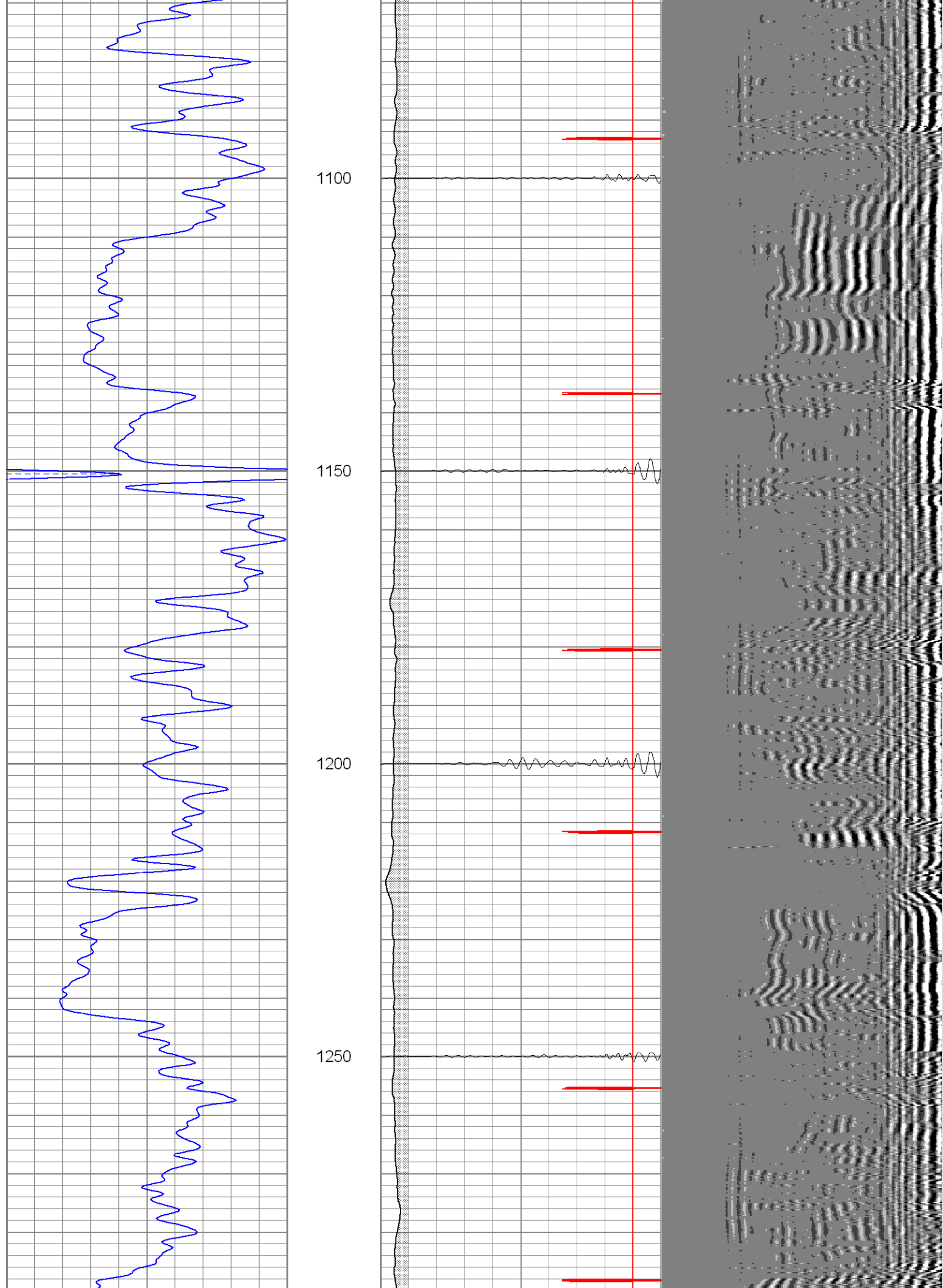


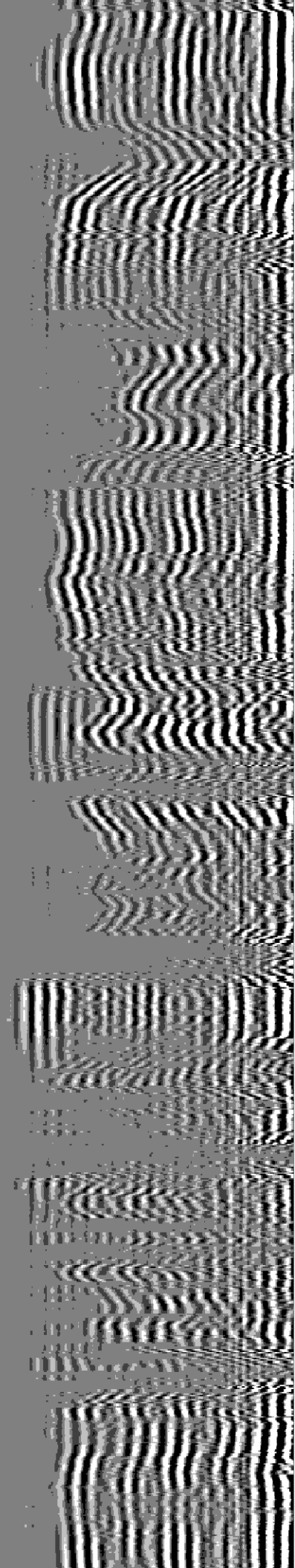
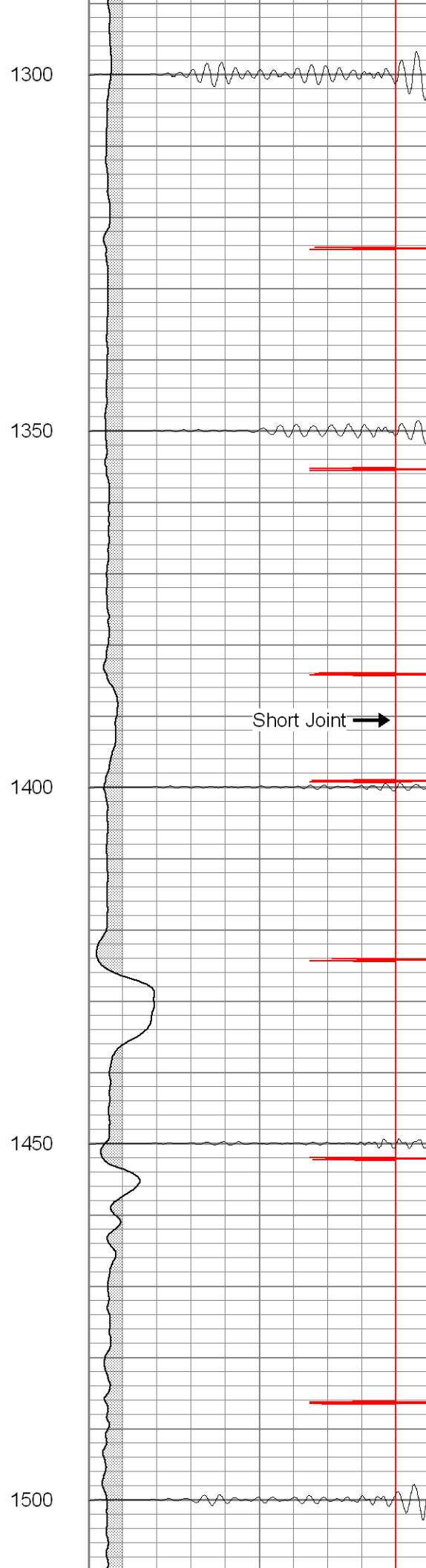
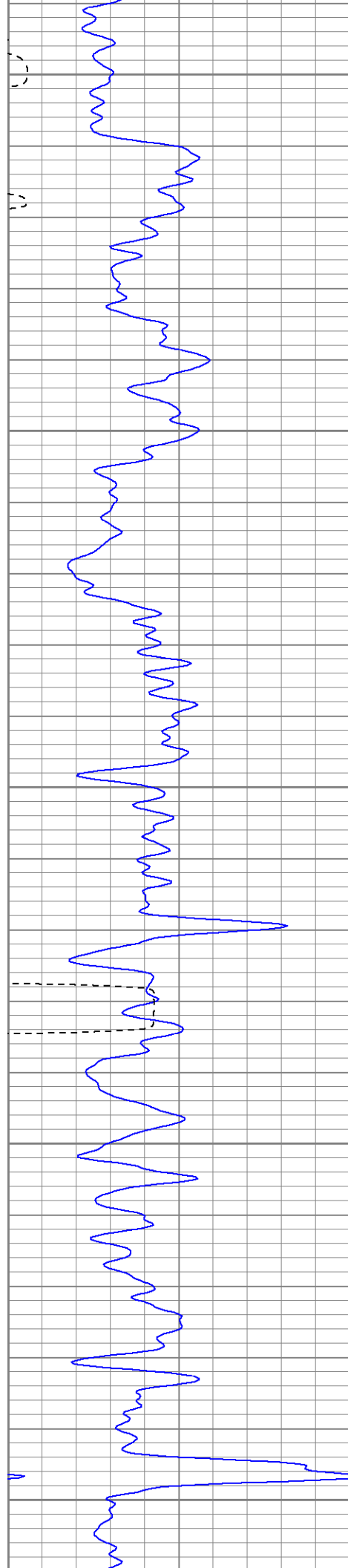


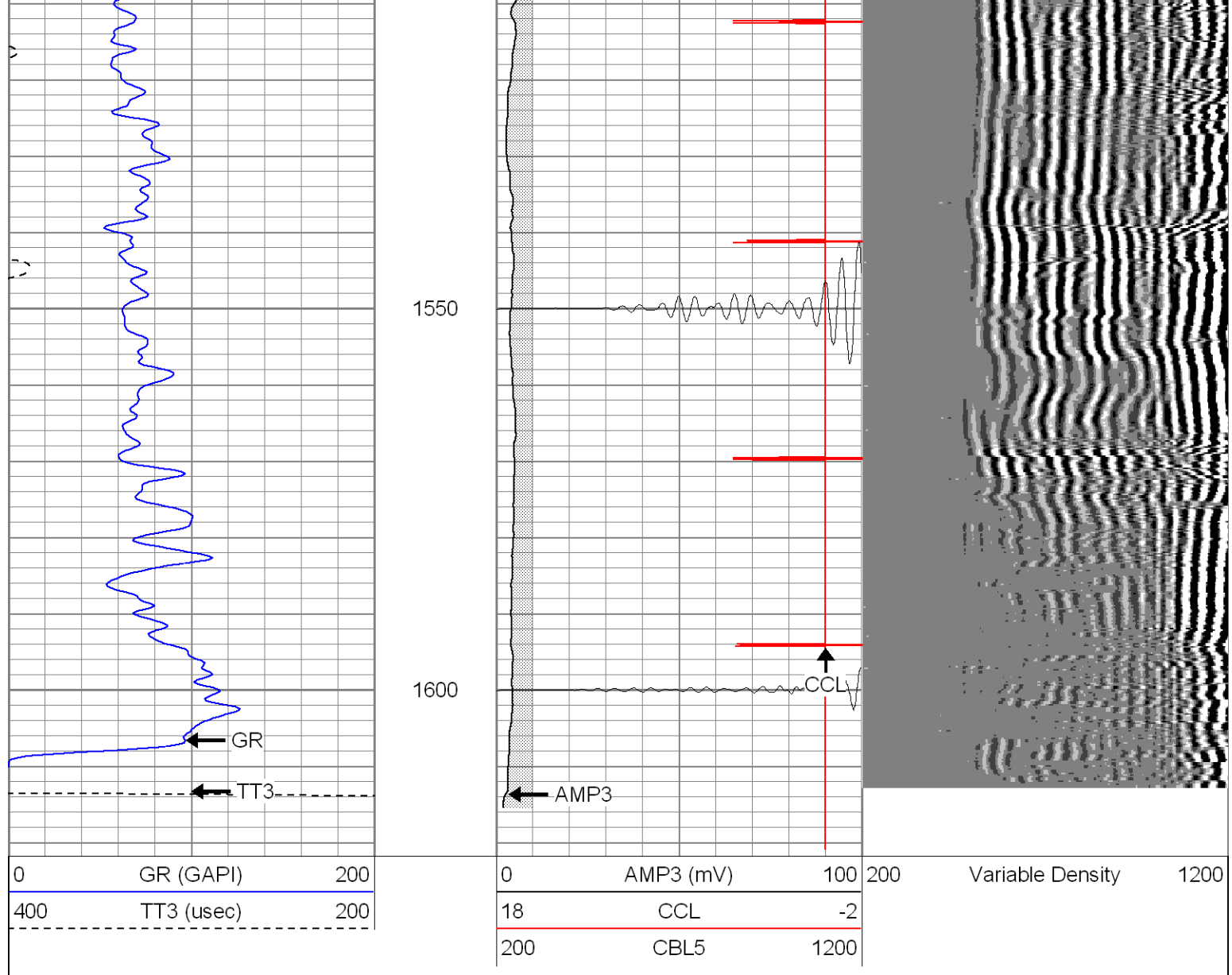








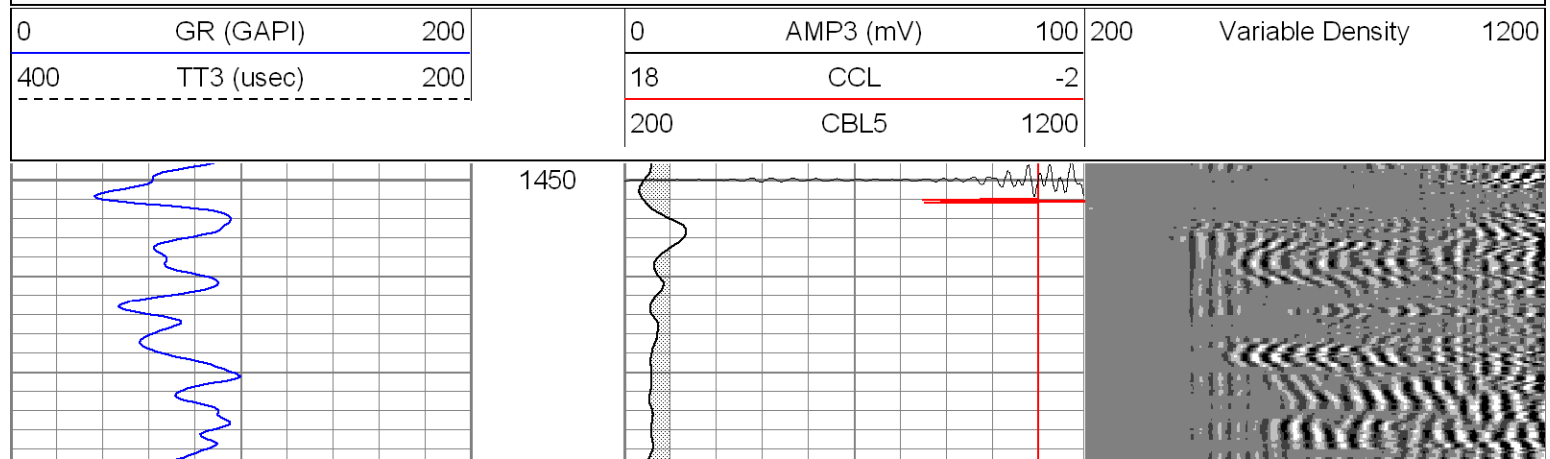


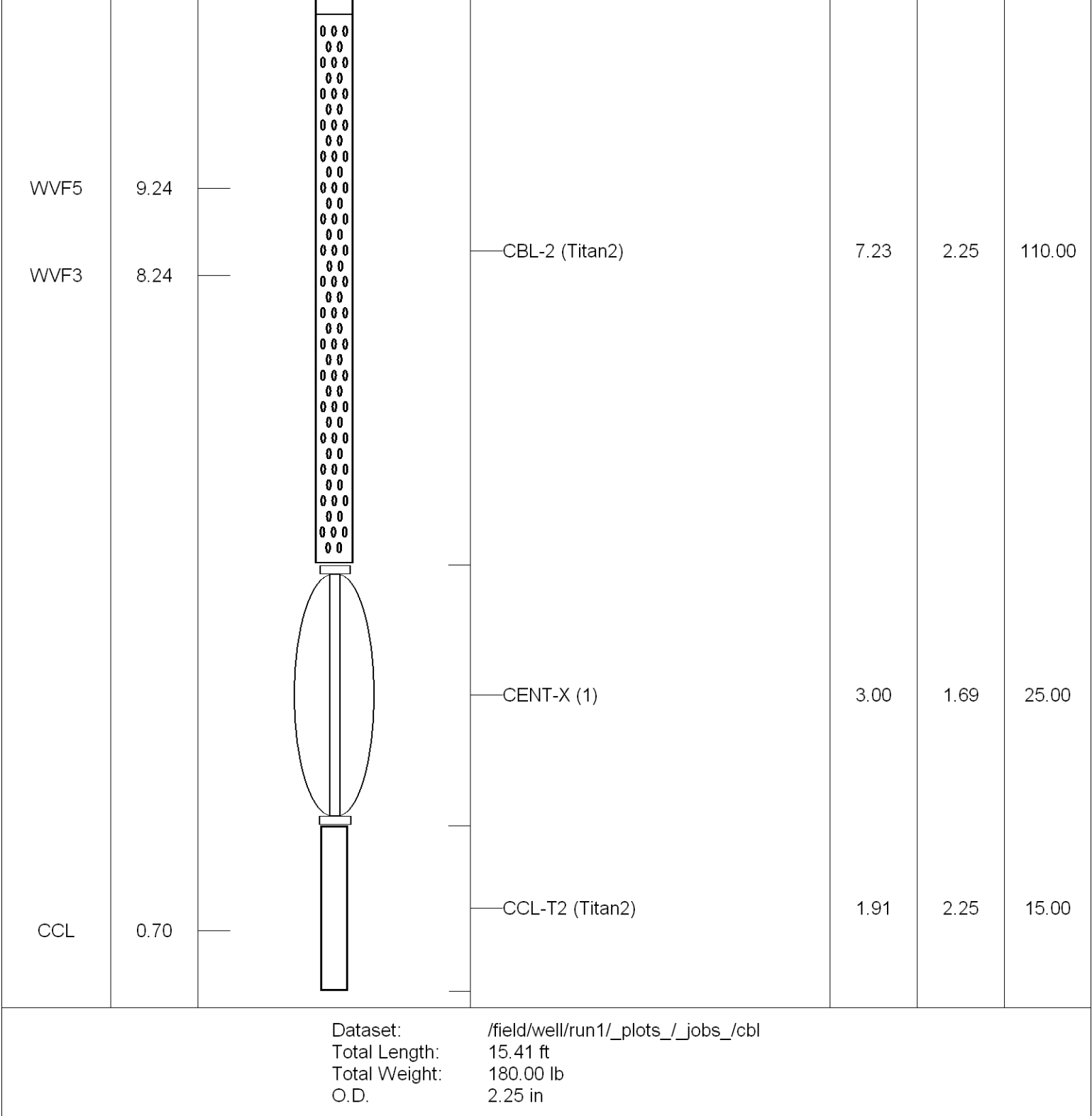


Patterson

Repeat Section

Database File: yellowknife121604b.db
 Dataset Pathname: pass1
 Presentation Format: cblrt
 Dataset Creation: Thu Dec 16 13:57:53 2004 by Log Warrior 7.0 STD Cas
 Charted by: Depth in Feet scaled 1:240





Cement Bond Log Calibration Report					
Serial Number:	Titan2				
Tool Model:	2				
Performed:	Mon Dec 06 10:22:37 2004				
Depth:	377.484	ft			
Casing Diameter:	5.5	in			
	3' Spacing		5' Spacing		
Signal Zero:	1		1	mV	
Calibrated Amplitude:	85		85	mV	
Reading at Signal Zero:	-0.02		0.0181641	V	
Reading in Free Pipe:	1.6		1.8	V	

Gain:	51.8519	47.1424
Offset:	2.03704	0.143701

Gamma Ray Calibration Report

Serial Number:	Titan2	
Tool Model:	T2	
Performed:	Wed Jul 30 10:50:23 2003	
Calibrator Value:	200.0	GAPI
Background Reading:	54.0	cps
Calibrator Reading:	219.0	cps
Sensitivity:	1.1500	GAPI/cps