

**Patterson**

**CEMENT BOND  
GAMMA RAY**

Company XTO Energy Inc.  
Well Golden Eagle 20-05 X  
Field Purgatorie River  
County Las Animas  
State CO

Company XTO Energy Inc.  
Well Golden Eagle 20-05 X  
Field Purgatorie River  
County Las Animas  
State CO

Location: API # : 05 071 08458 00

1732' FNL & 962' FWL

SEC 20 TWP 33S RGE 67W

Permanent Datum Ground Level Elevation 7334'  
Log Measured From Ground Level  
Drilling Measured From Ground Level

Elevation

K.B. 7334'

D.F. -----

G.L. -----

Date 1/10/06

Run Number one

Depth Driller 2155'

Depth Logger 2070'

Bottom Logged Interval 2066'

Top Log Interval Surf.

Open Hole Size 7 7/8"

Type Fluid Water

Density / Viscosity ///

Max. Recorded Temp. ///

Estimated Cement Top Surf.

Time Well Ready 12:00

Time Logger on Bottom 2:50

Equipment Number T244

Location Trinidad

Recorded By Worley

Witnessed By Mr. Moff

Run Number

Bit From To

Size

Weight

From To

Size

Wgt/Ft

Top

Bottom

8 5/8"

00

00

NA

<<< Fold Here >>>

All interpretations are opinions based on inferences from electrical or other measurements and we cannot and do not guarantee the accuracy or correctness of any interpretation, and we shall not, except in the case of gross or willful negligence on our part, be liable or responsible for any loss, costs, damages, or expenses incurred or sustained by anyone resulting from any interpretation made by any of our officers, agents or employees. These interpretations are also subject to our general terms and conditions set out in our current Price Schedule.

Comments

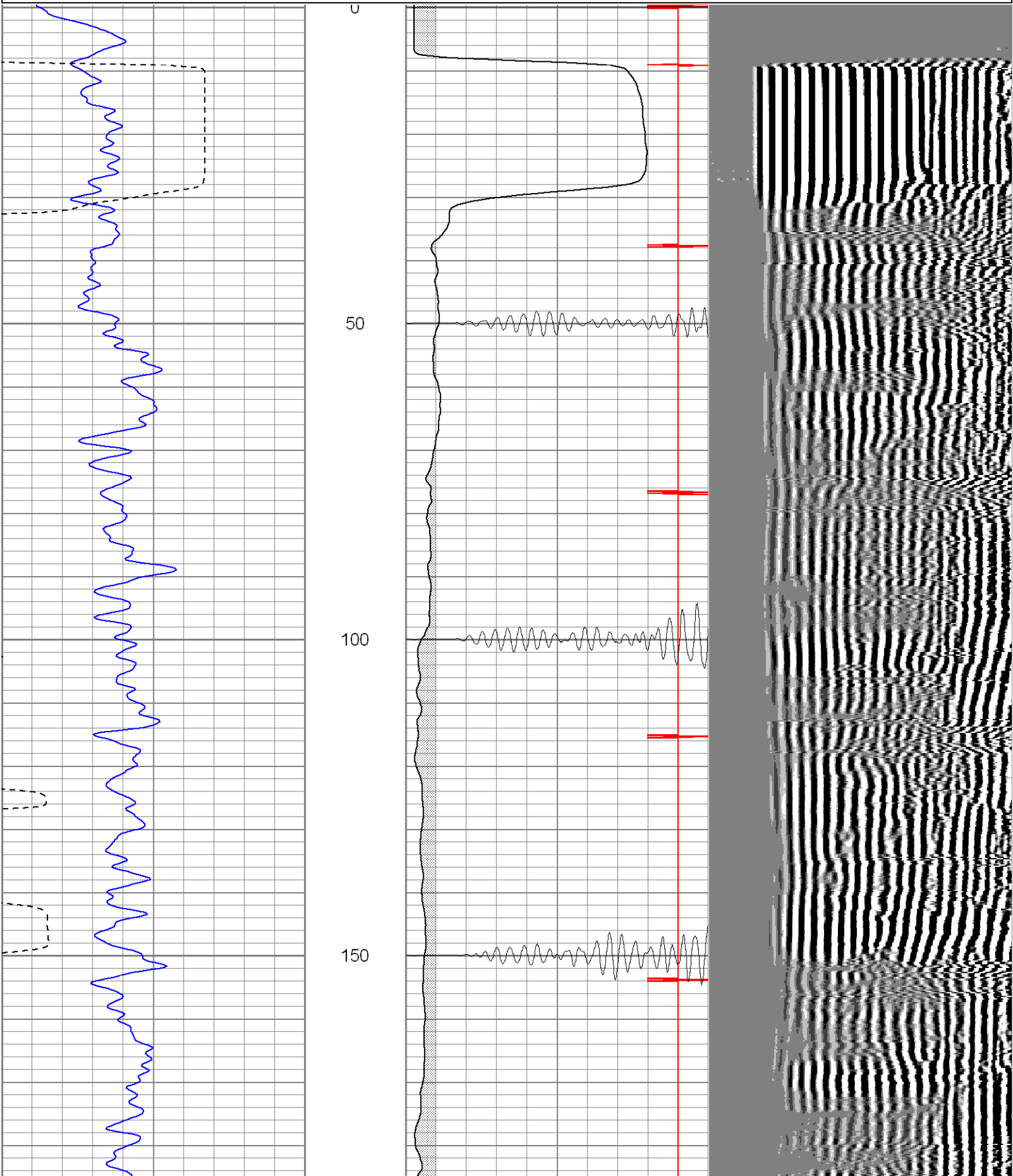
Four Miles past Weston, Take Right, Second Location.

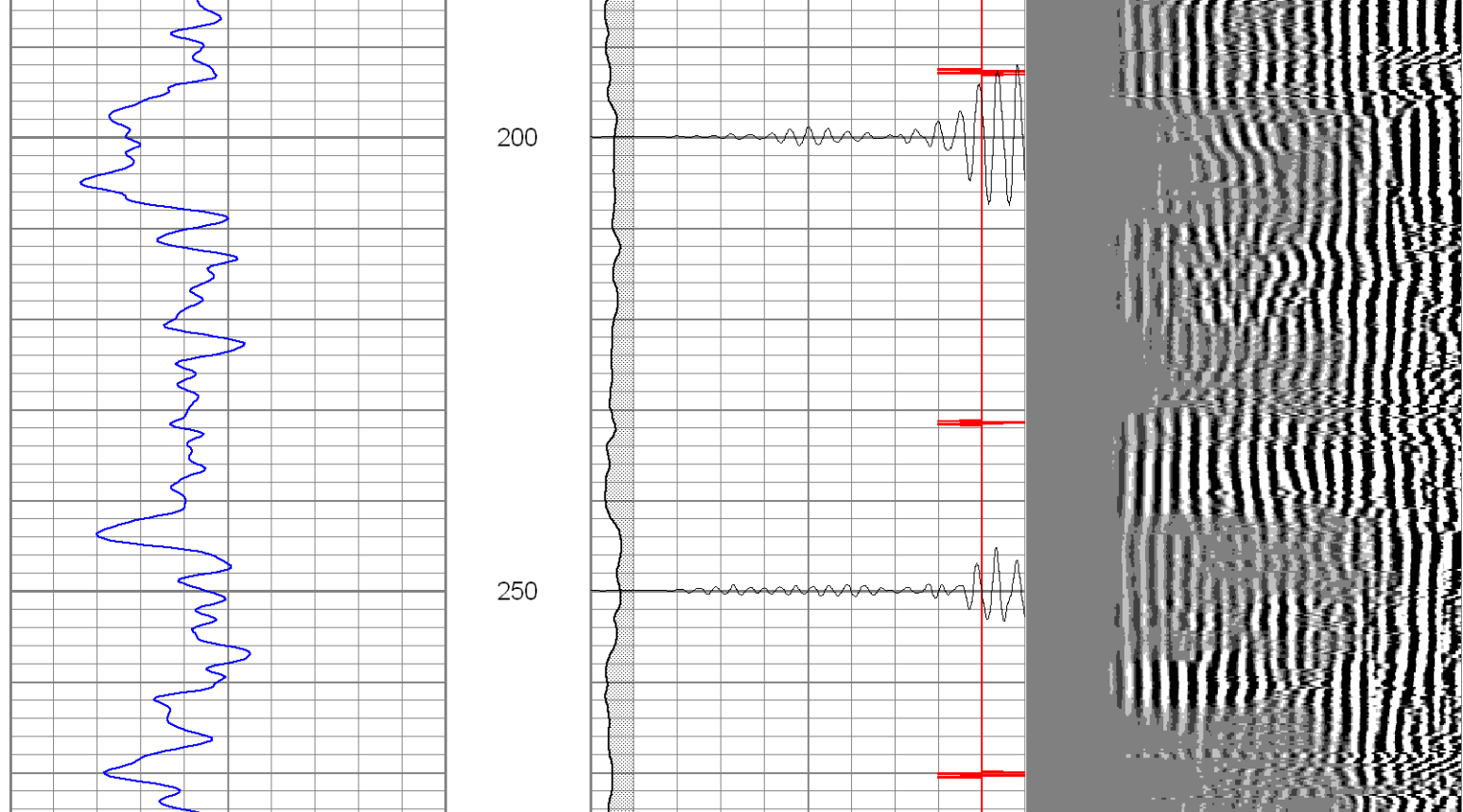
**Patterson**

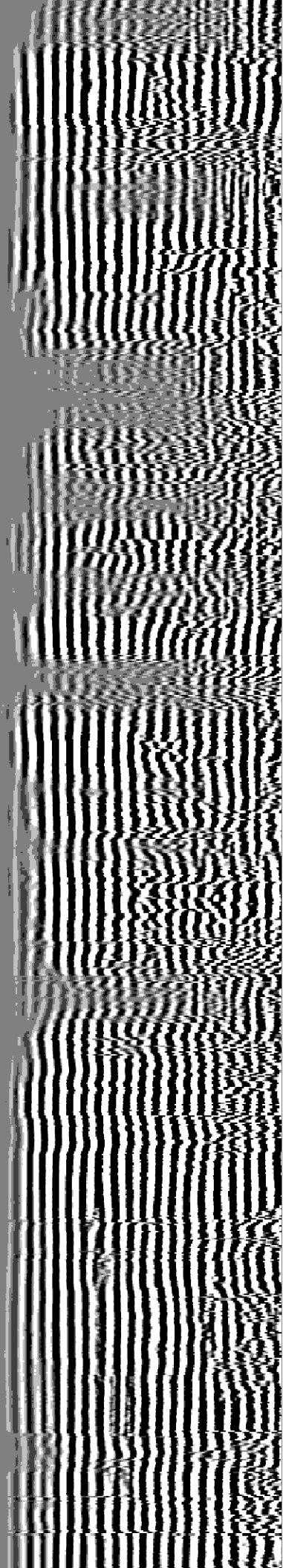
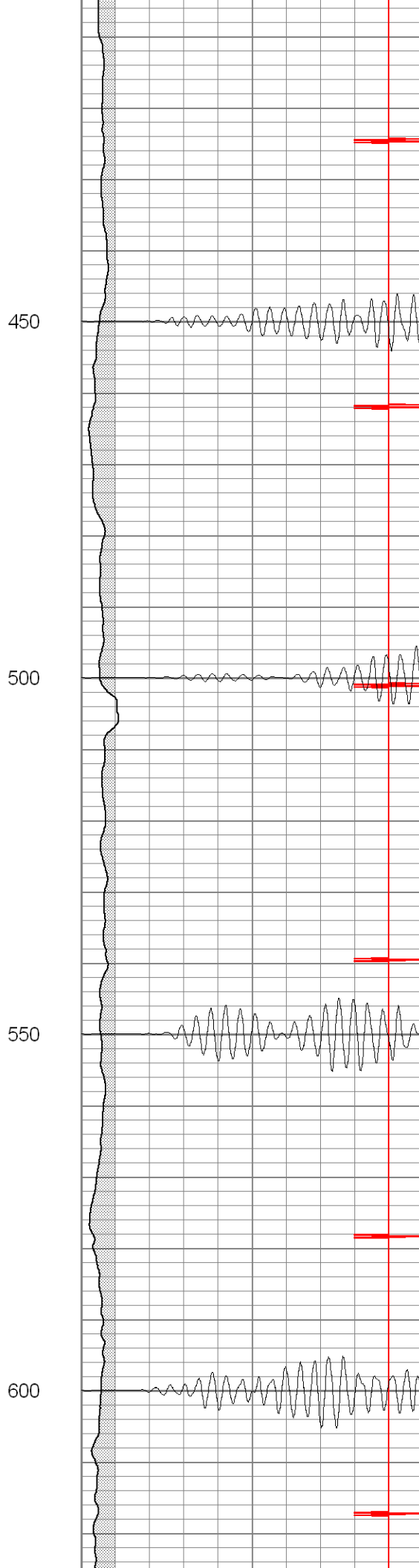
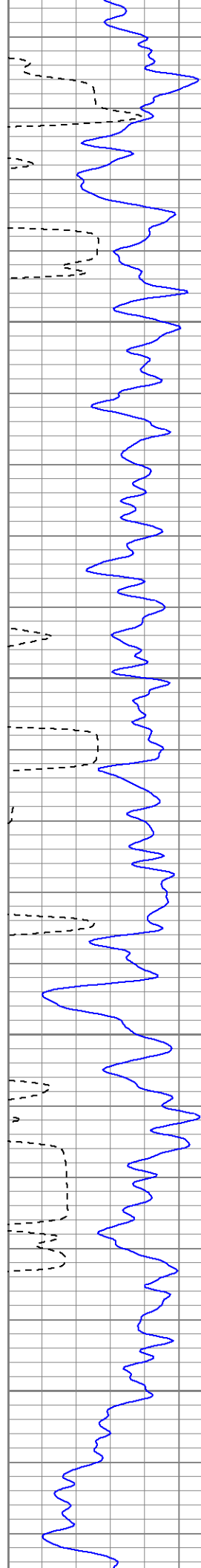
**Main Pass**

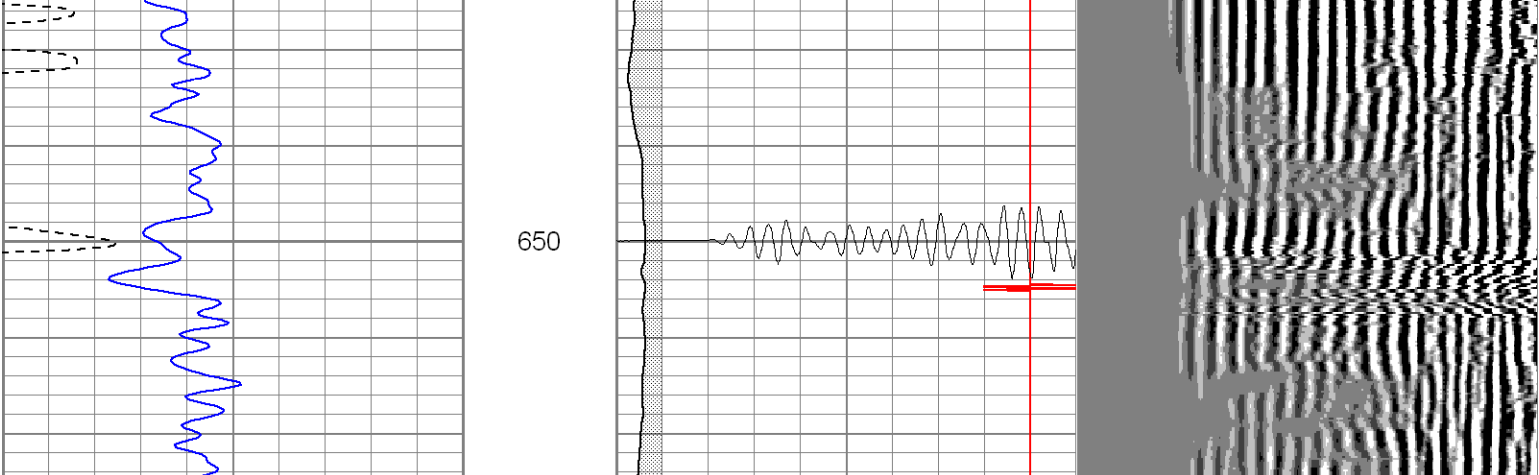
Database File: ge20-05xb011006.db  
Dataset Pathname: pass2  
Presentation Format: cblrt  
Dataset Creation: Tue Jan 10 14:55:51 2006 by Log Warrior 7.0 STD Cas  
Charted by: Depth in Feet scaled 1:240

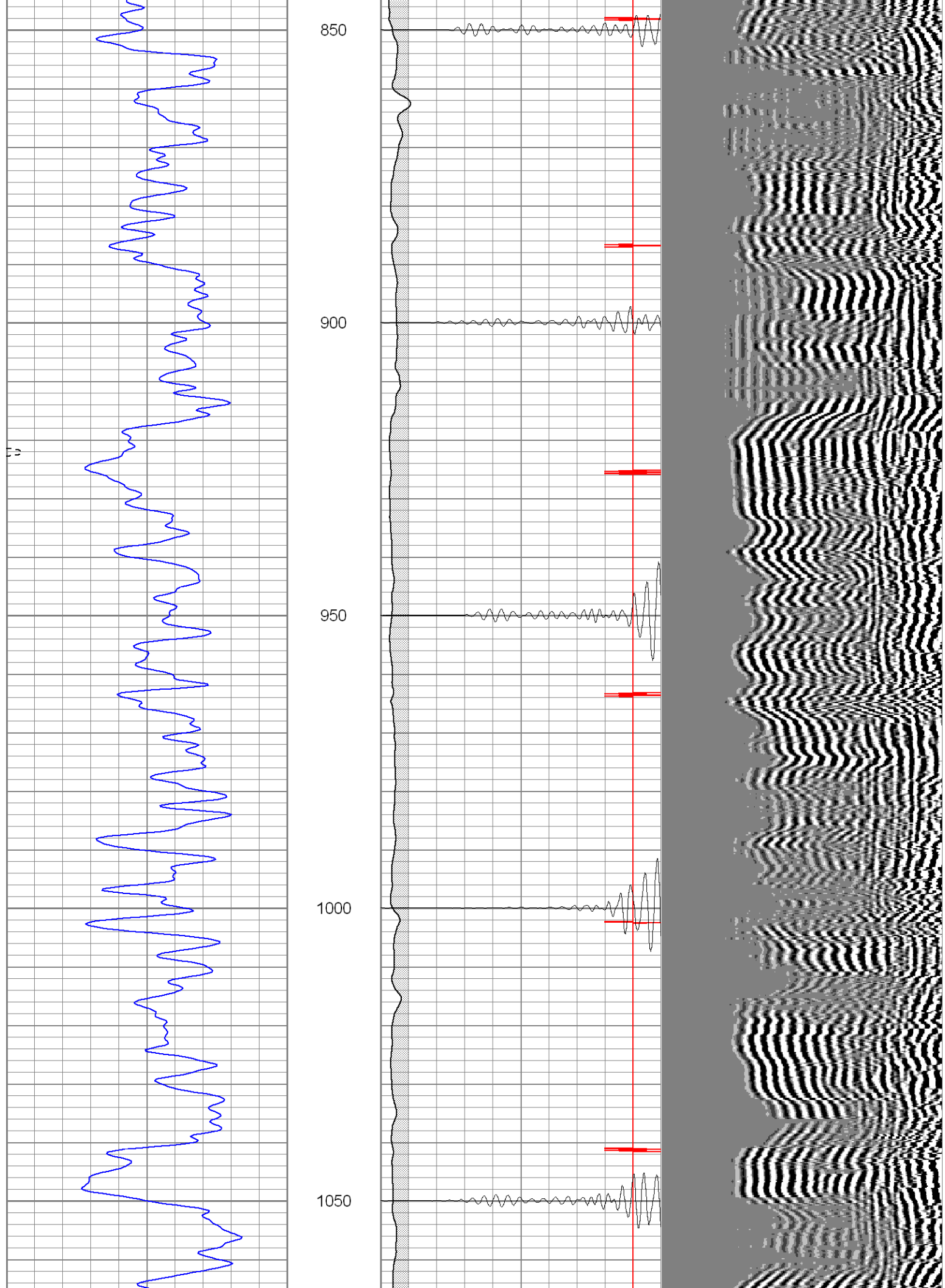
0	GR (GAPI)	200	0	AMP3 (mV)	100	200	Variable Density	1200
400	TT3 (usec)	200	18	CCL	-2			
			200	CBL5	1200			



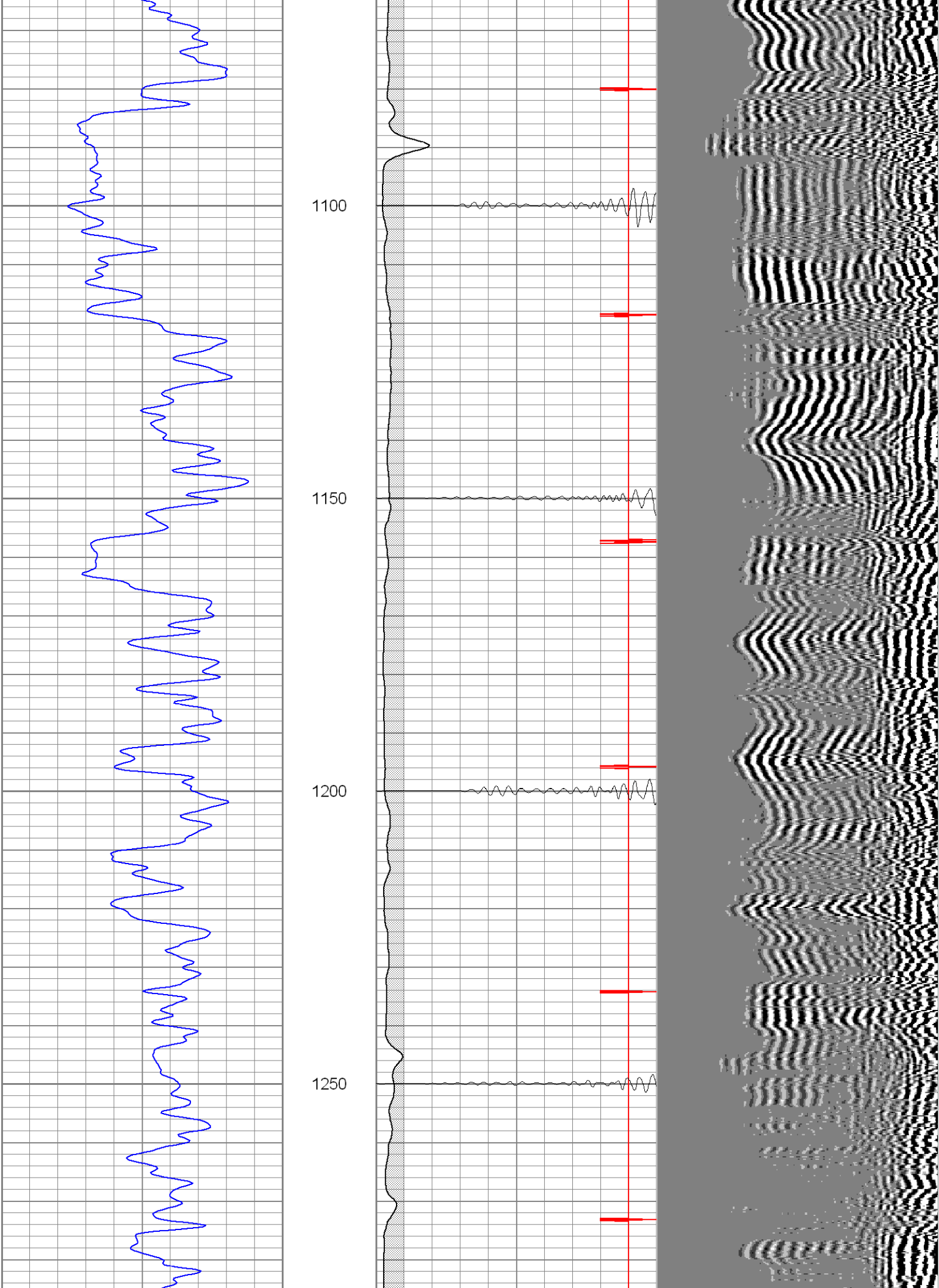


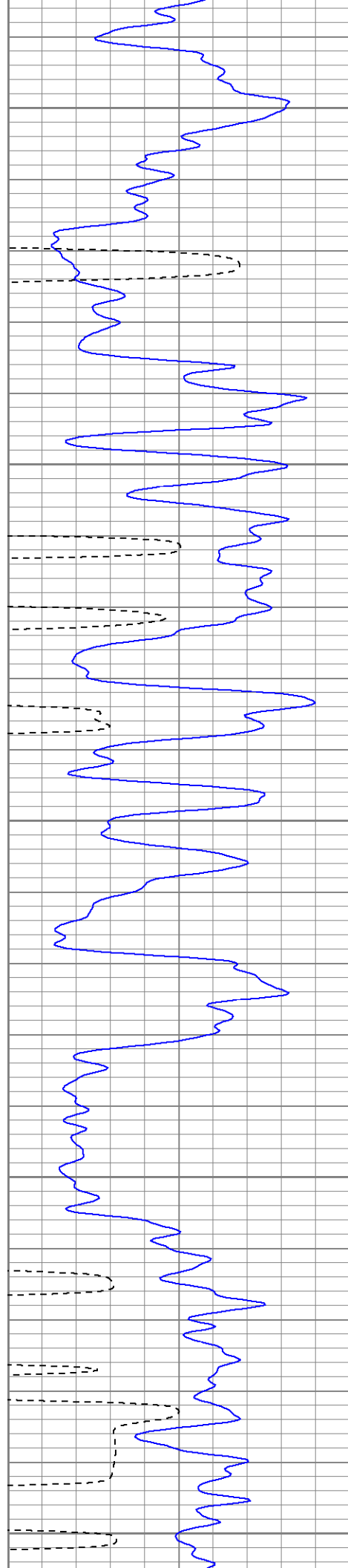












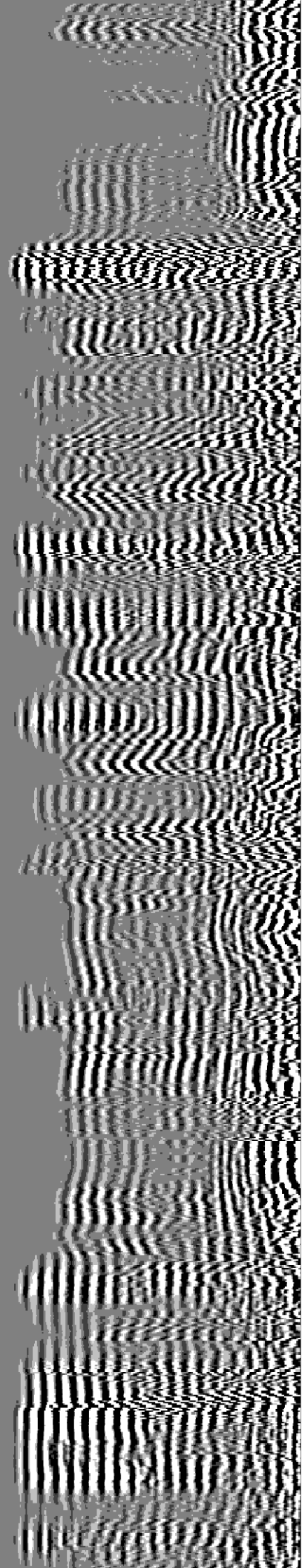
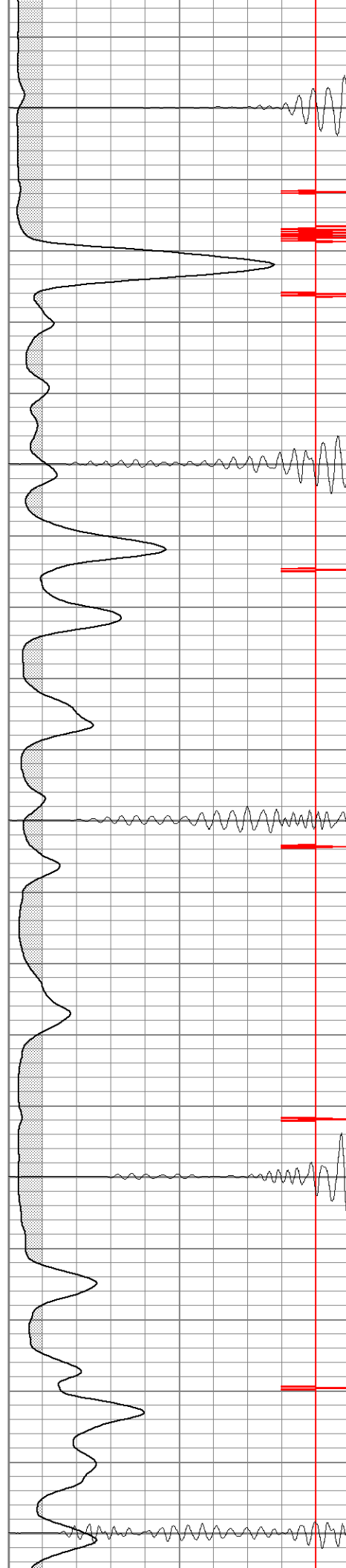
1300

1350

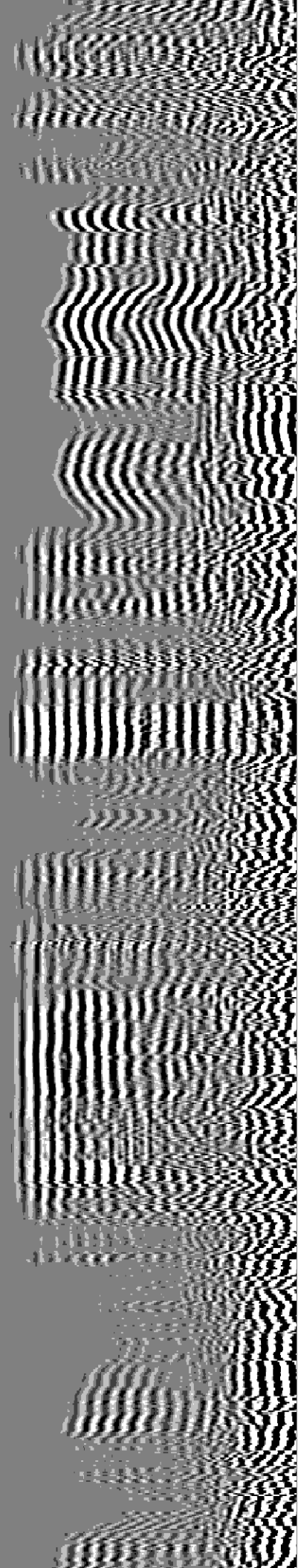
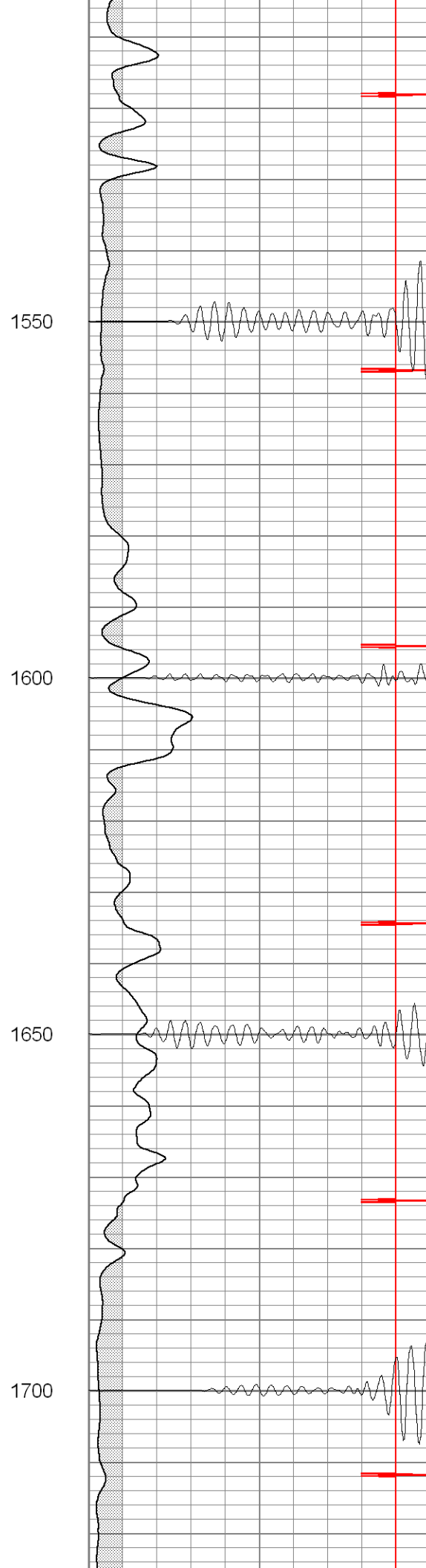
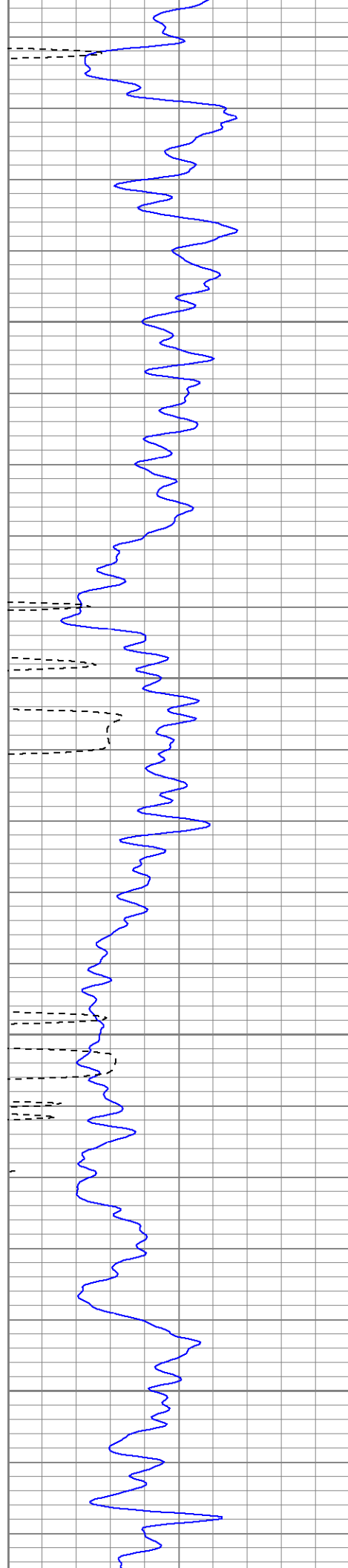
1400

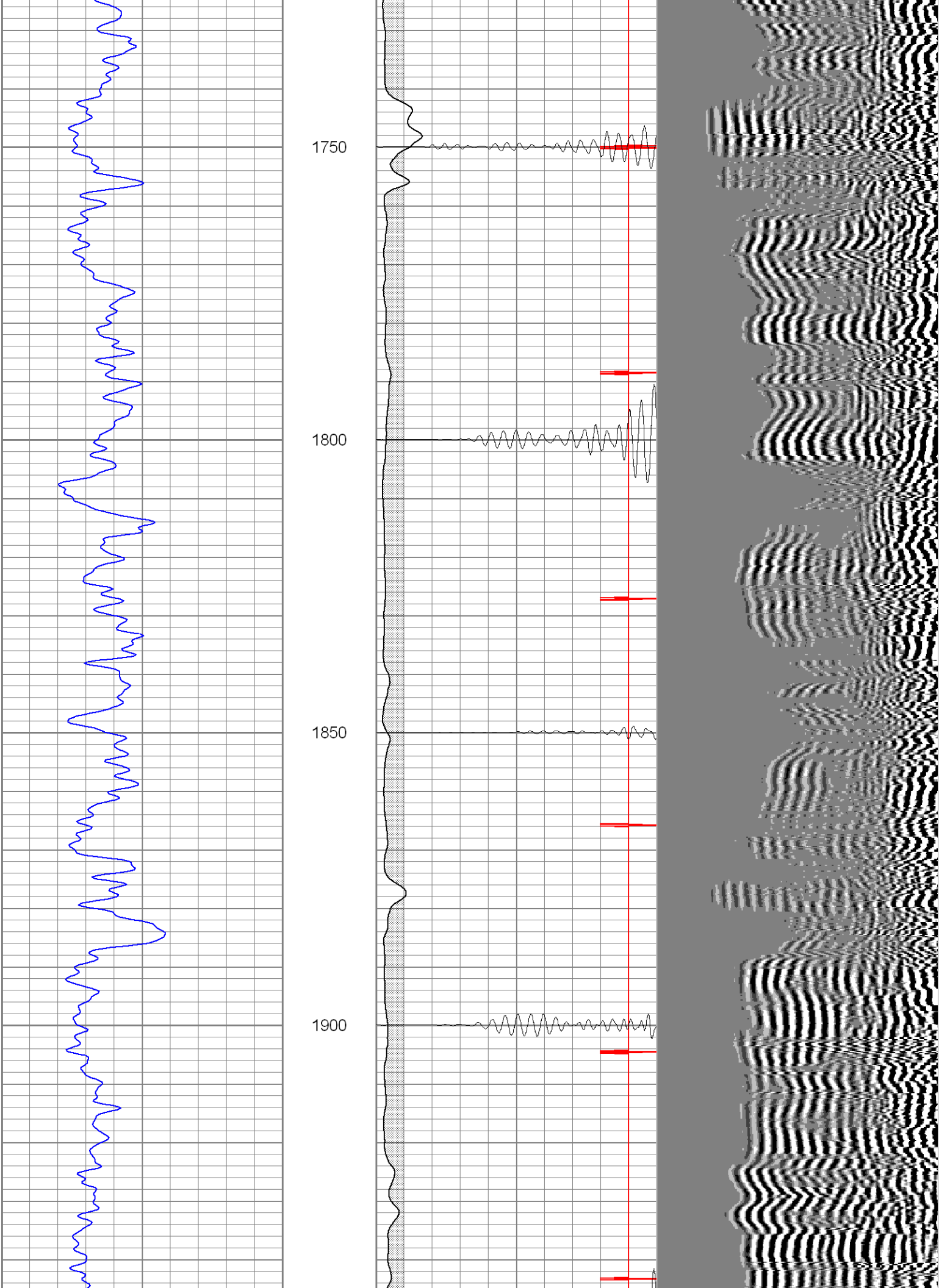
1450

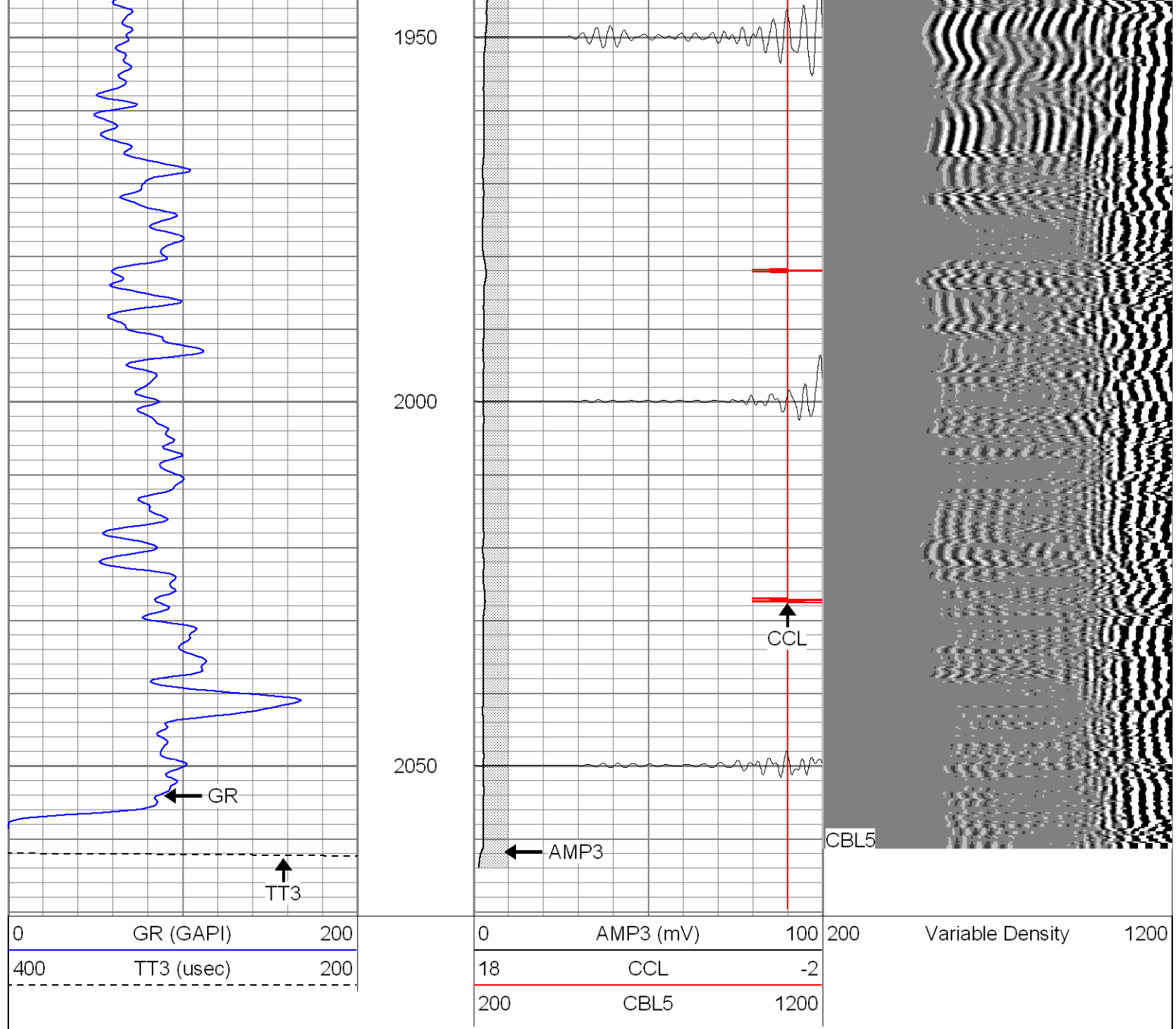
1500







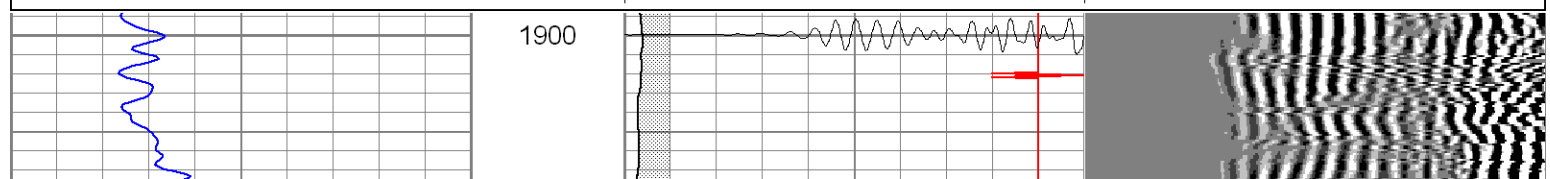
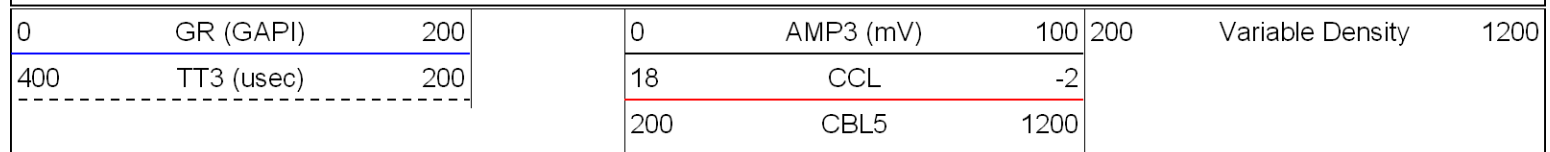


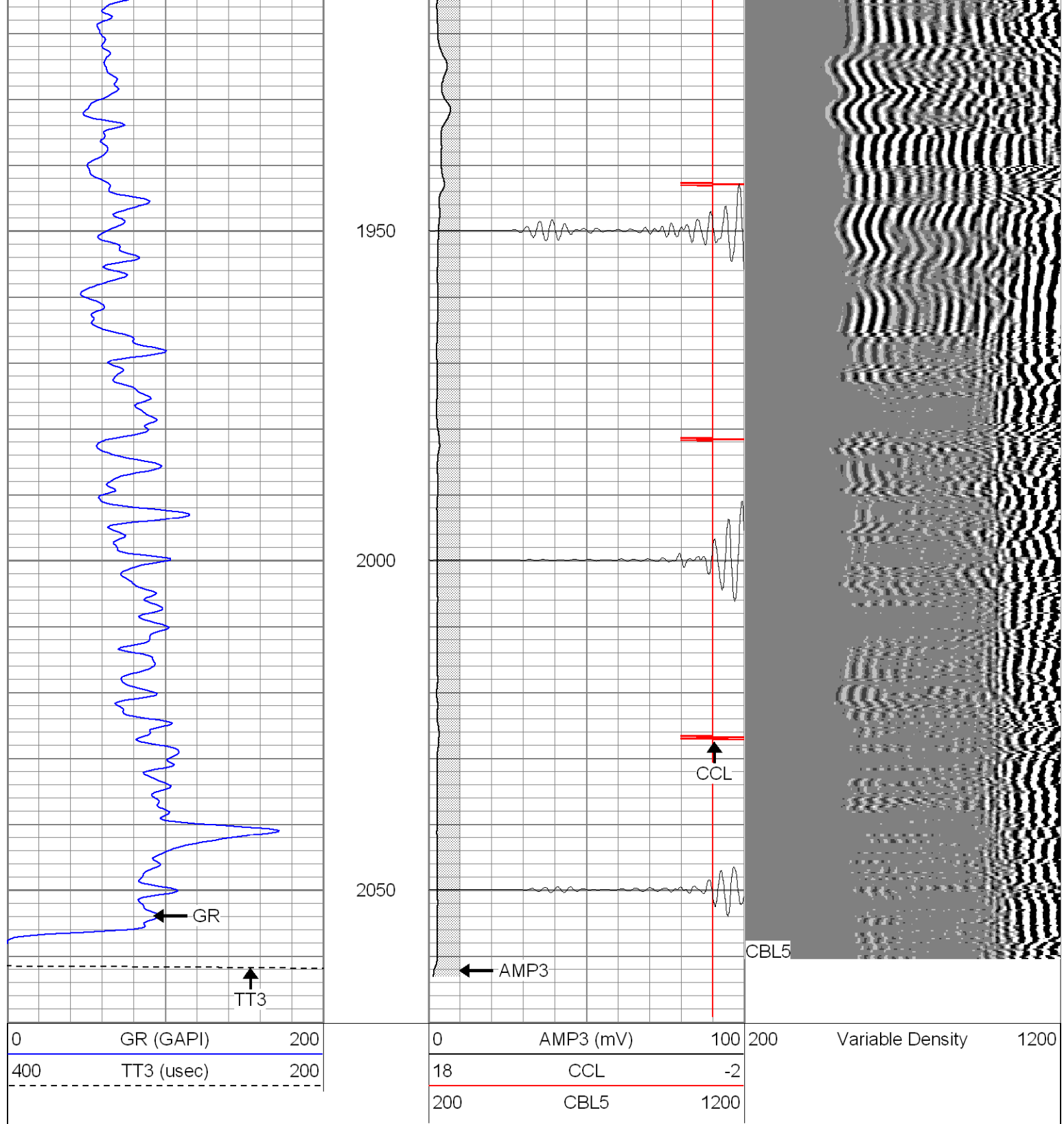


**Patterson**

## Repeat Section

Database File: ge20-05xb011006.db  
Dataset Pathname: pass1  
Presentation Format: cblrt  
Dataset Creation: Tue Jan 10 14:50:17 2006 by Log Warrior 7.0 STD Cas  
Charted by: Depth in Feet scaled 1:240





### Cement Bond Log Calibration Report

Serial Number: Titan5  
Tool Model: 2  
Performed: Tue Jan 10 14:50:04 2006

Depth: 2158.27 ft  
Casing Diameter: 5.5 in

3' Spacing      5' Spacing

Signal Zero: 0      0      mV  
Calibrated Amplitude: 85      85      mV

Reading at Signal Zero:	-0.02	0	V
Reading in Free Pipe:	1	0.9	V
Gain:	83.3333	94.4444	
Offset:	1.66667	0	

# Gamma Ray Calibration Report

Serial Number:	Titan5		
Tool Model:	T2		
Performed:	Tue Jan 10 09:18:37 2006		
Calibrator Value:	1.0	GAPI	
Background Reading:	0.0	cps	
Calibrator Reading:	1.0	cps	
Sensitivity:	1.2000	GAPI/cps	