

CEMENT BOND  
GAMMA RAY  
1000 PSI

Company XTO Energy Inc.

Well Apache Canyon 31-12

Field Purgatorie River

County Las Animas State CO

Location: API #: 05 071 09120 00

2482' FSL & 331' FWL	CONTROL
1	1
2	2
3	3
4	4
5	5
6	6
7	7
8	8
9	9
10	10
11	11
12	12
13	13
14	14
15	15
16	16
17	17
18	18
19	19
20	20
21	21
22	22
23	23
24	24
25	25
26	26
27	27
28	28
29	29
30	30
31	31
32	32
33	33
34	34
35	35
36	36
37	37
38	38
39	39
40	40
41	41
42	42
43	43
44	44
45	45
46	46
47	47
48	48
49	49
50	50
51	51
52	52
53	53
54	54
55	55
56	56
57	57
58	58
59	59
60	60
61	61
62	62
63	63
64	64
65	65
66	66
67	67
68	68
69	69
70	70
71	71
72	72
73	73
74	74
75	75
76	76
77	77
78	78
79	79
80	80
81	81
82	82
83	83
84	84
85	85
86	86
87	87
88	88
89	89
90	90
91	91
92	92
93	93
94	94
95	95
96	96
97	97
98	98
99	99
100	100

SEC 31 TWP 33S RGE 67W

Permanent Datum	Ground Level	Elevation	7743
Log Measured From	Ground Level		
Drilling Measured From	Ground Level		

Elevation	K.B. _____
	D.F. _____
	G.L. 7743'

Company XTO Energy Inc

Well Apache Canyon 31-12

Field Purgatorie River

County Las Animas

State CO

Data

Run Number

Depth Driller

Bottom Logged Interval

Top Log Inte

Type Fluid

Density / Viscosity

Max. Recorded Temp.

Time Well Spent

## Time Logger on Bottom

Equipment A

ocation

Recollected by

100

Run Number

---

---

---

## Raising Records

Surface string

Production St

inner

---

<<< Fold Here >>>

All interpretations are opinions based on inferences from electrical or other measurements and we cannot and do not guarantee the accuracy or correctness of any interpretation, and we shall not, except in the case of gross or willful negligence on our part, be liable or responsible for any loss, costs, damages, or expenses incurred or sustained by anyone resulting from any interpretation made by any of our officers, agents or employees. These interpretations are also subject to our general terms and conditions set out in our current Price Schedule.

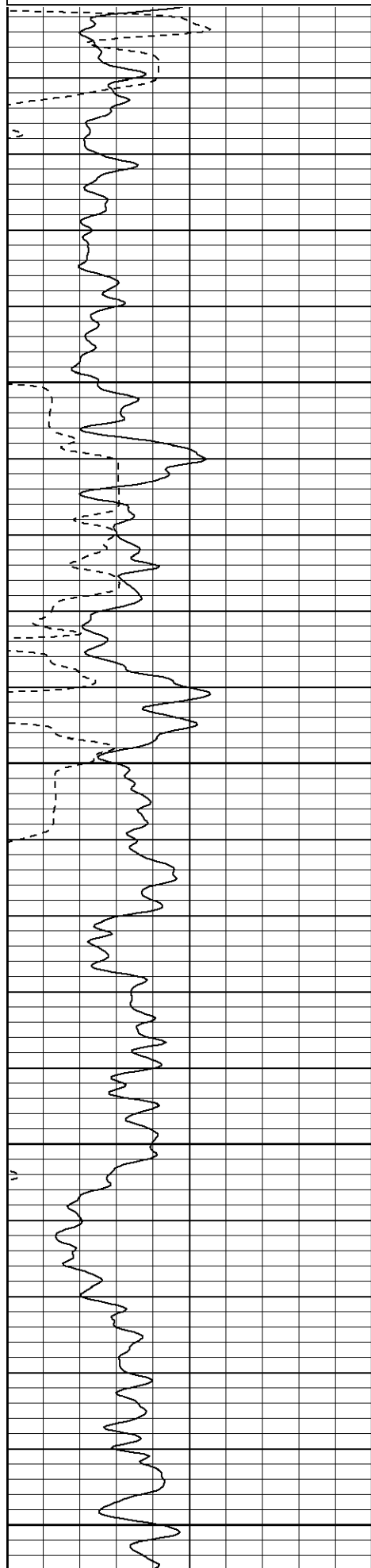
## Comments

Second Bosque entrance four miles past Weston turn left,  
at Y stay left on Ciruele Canyon, drive to windmill, stay right, at next Y stay left,  
second drive thru location.

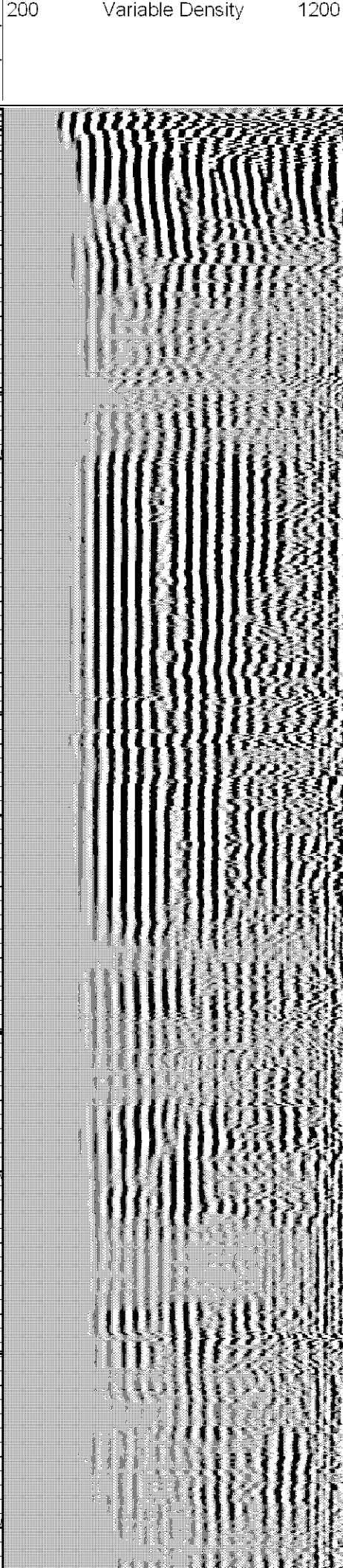
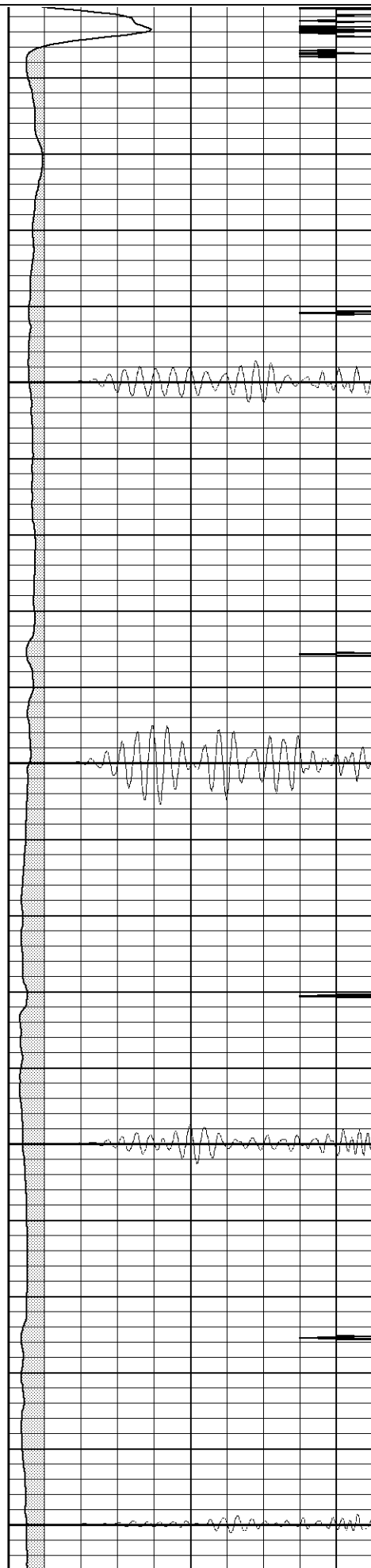
CBL ran under 1000 PSI.

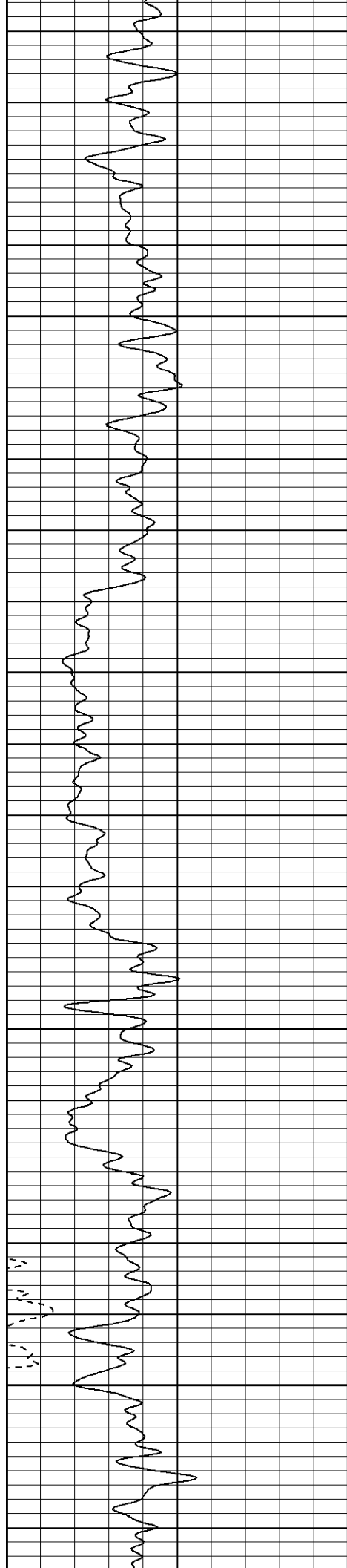
Database File: ac31-12b32607.db  
Dataset Pathname: pass2  
Presentation Format: cblrt  
Dataset Creation: Mon Mar 26 12:35:07 2007 by Log Open-Cased 061129  
Charted by: Depth in Feet scaled 1:240

0	GR (GAPI)	200
400	TT3 (usec)	200



0	AMP3 (mV)	100
18	CCL	-2
200	CBL5	1200



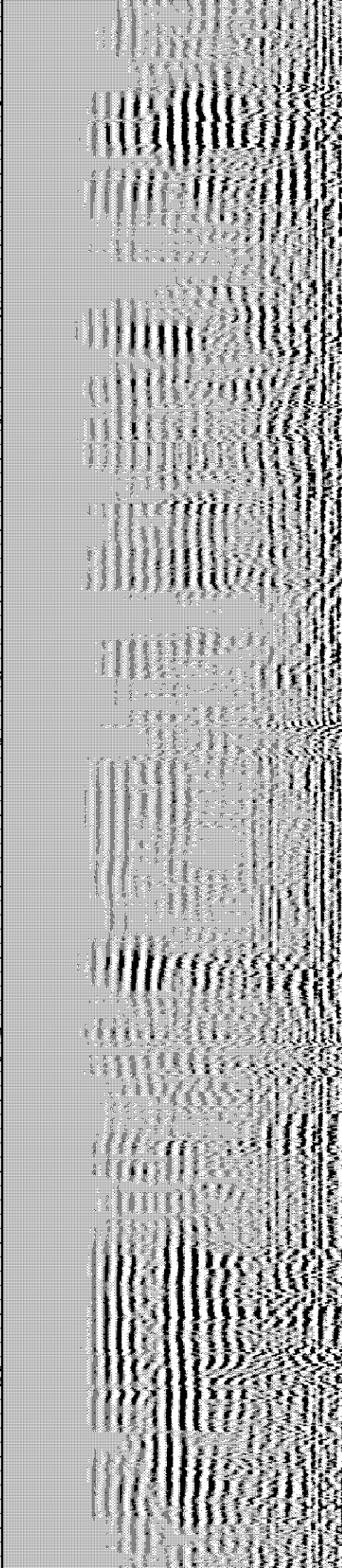
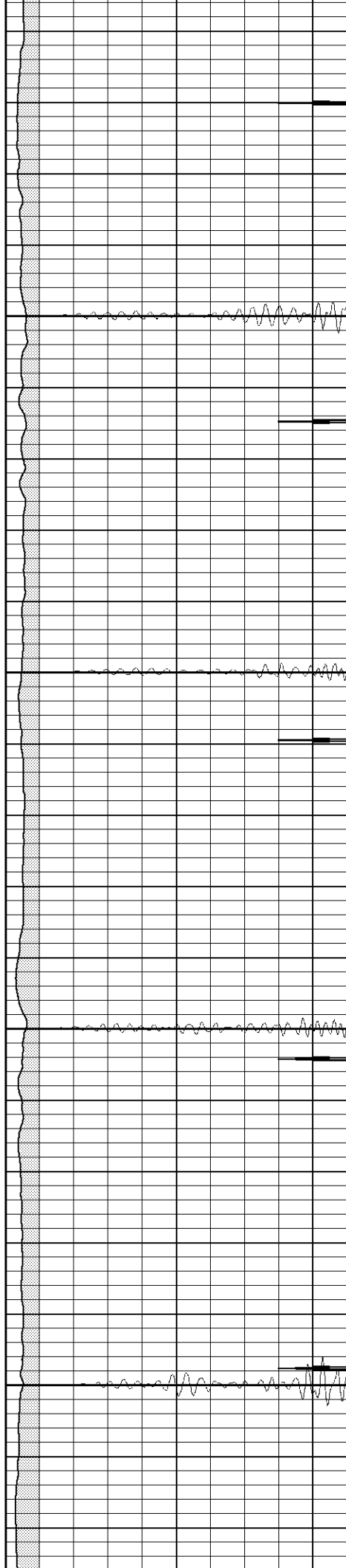


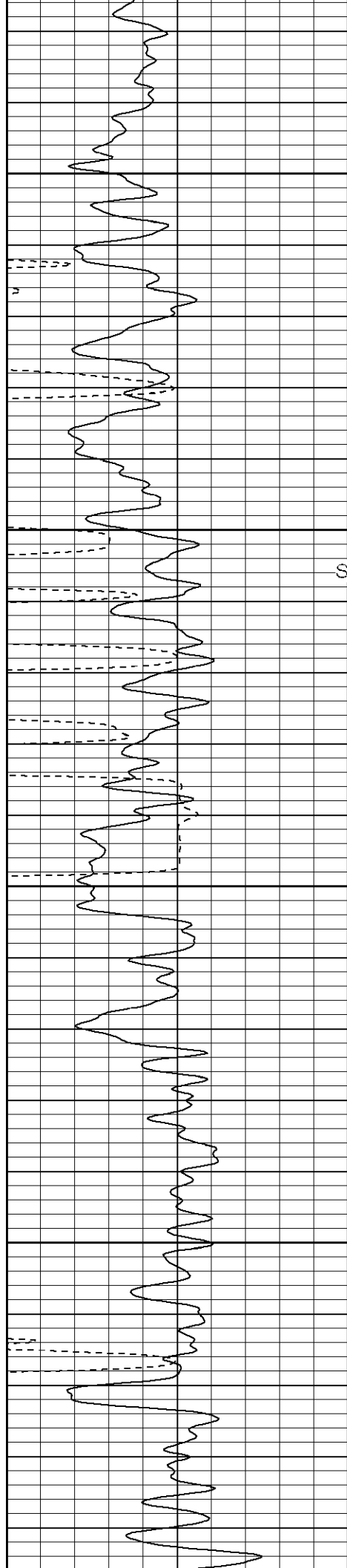
250

300

350

400





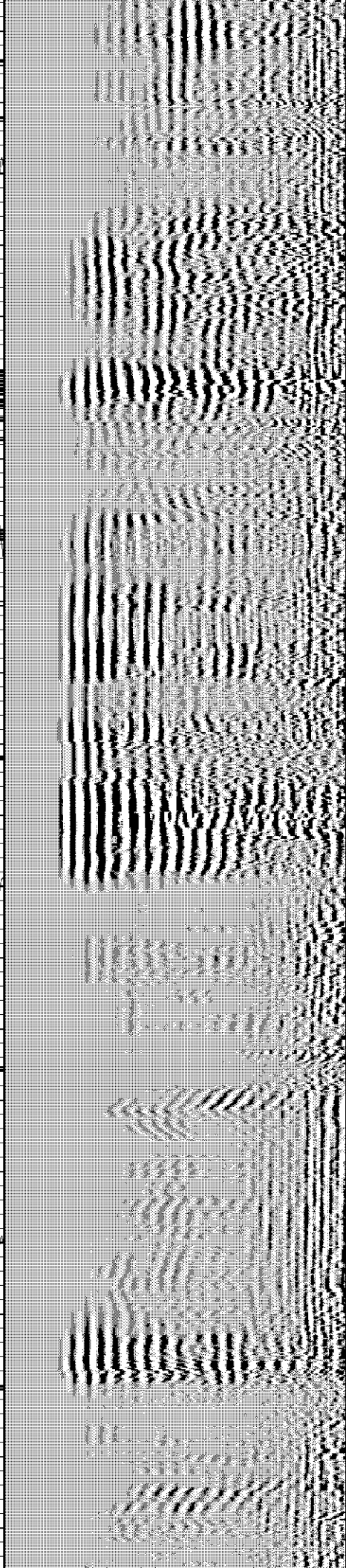
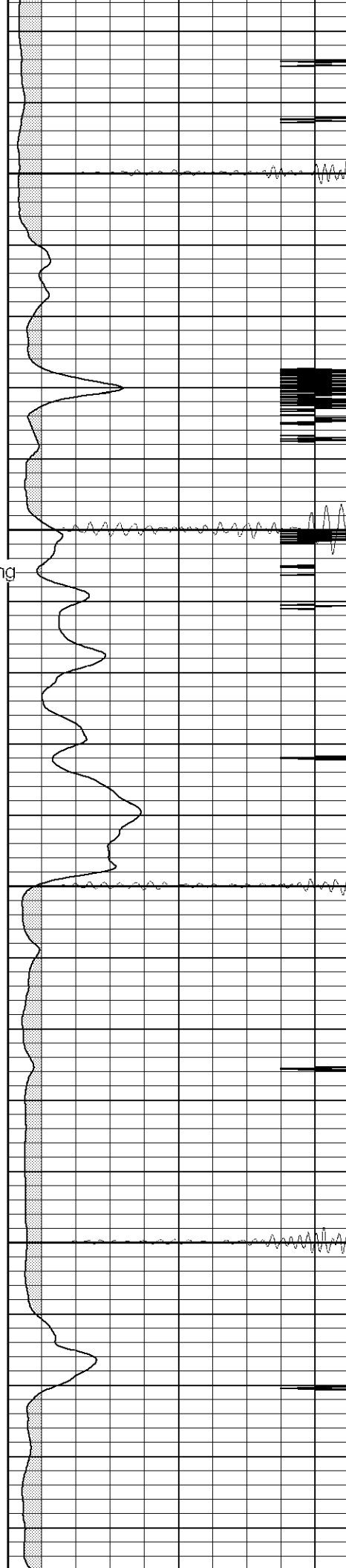
450

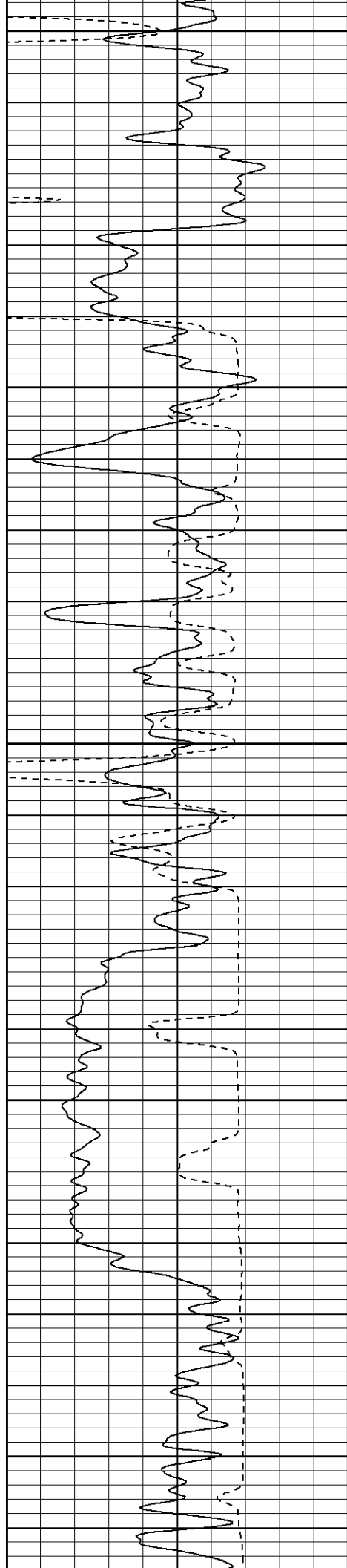
500

Surface Casing

550

600





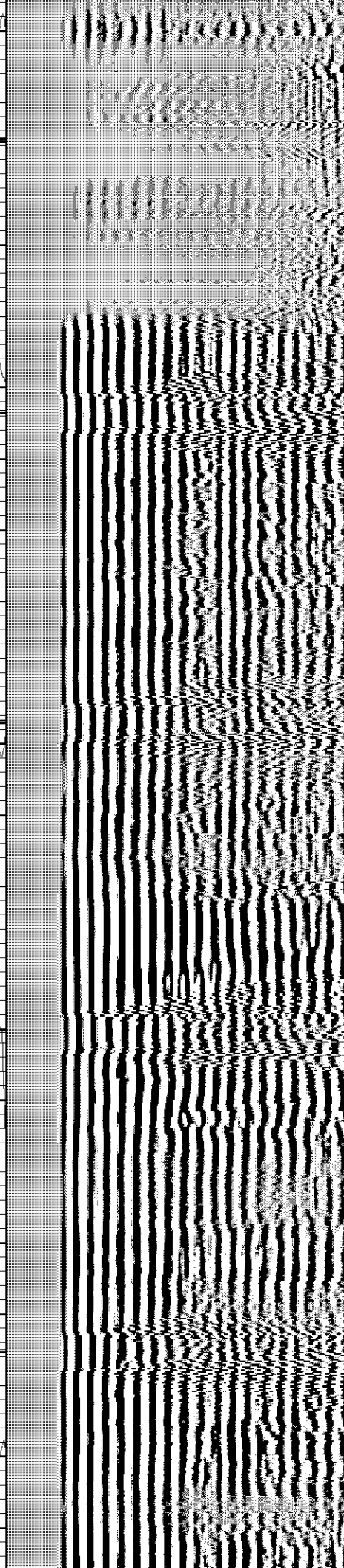
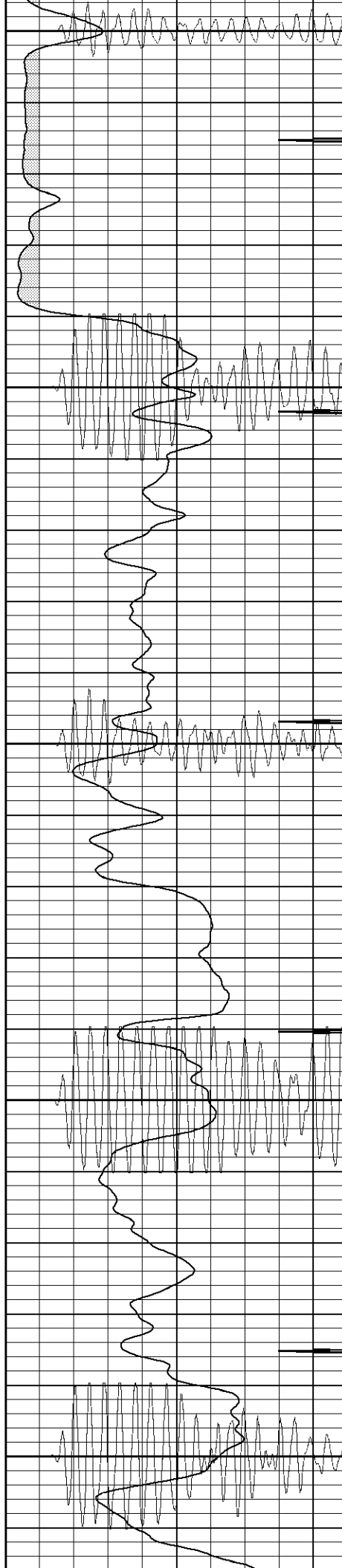
650

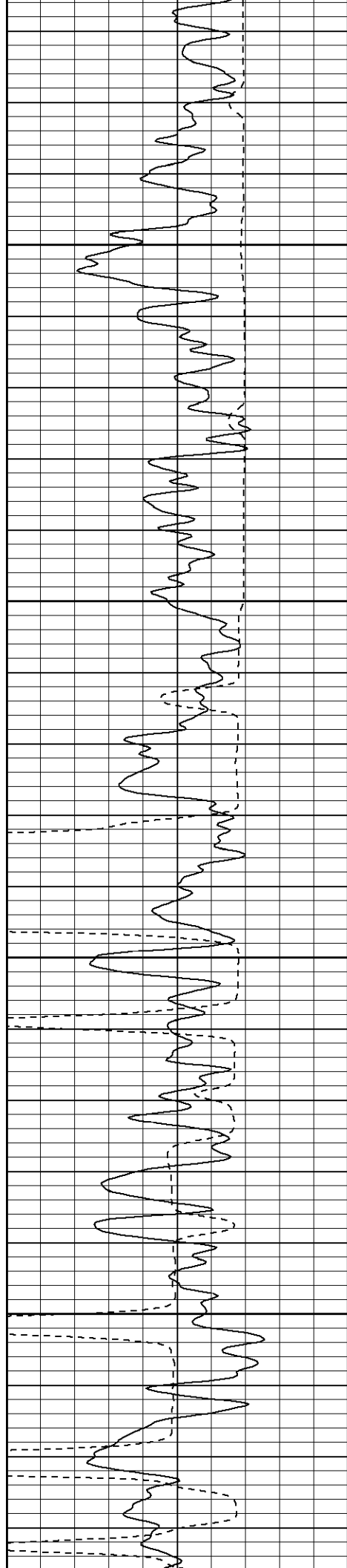
700

750

800

850



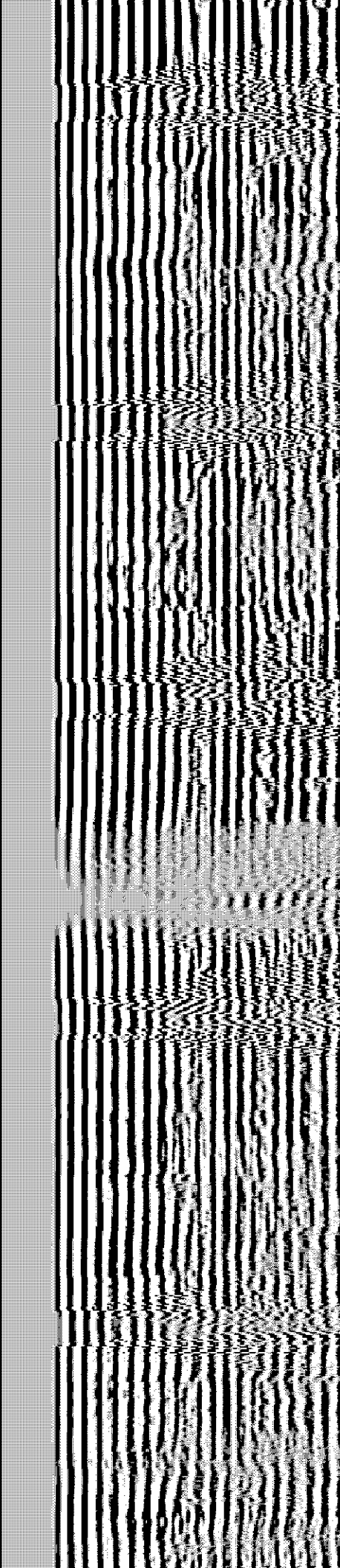
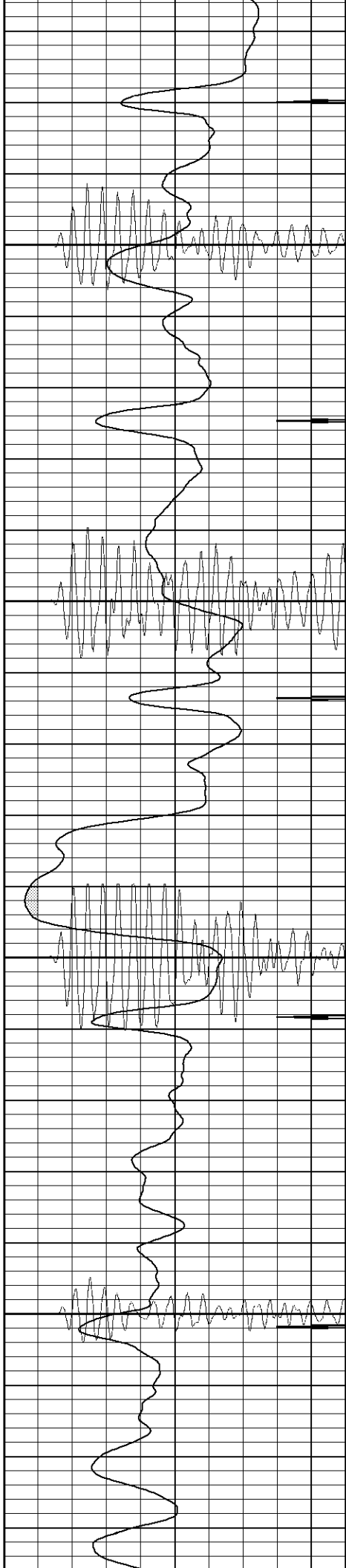


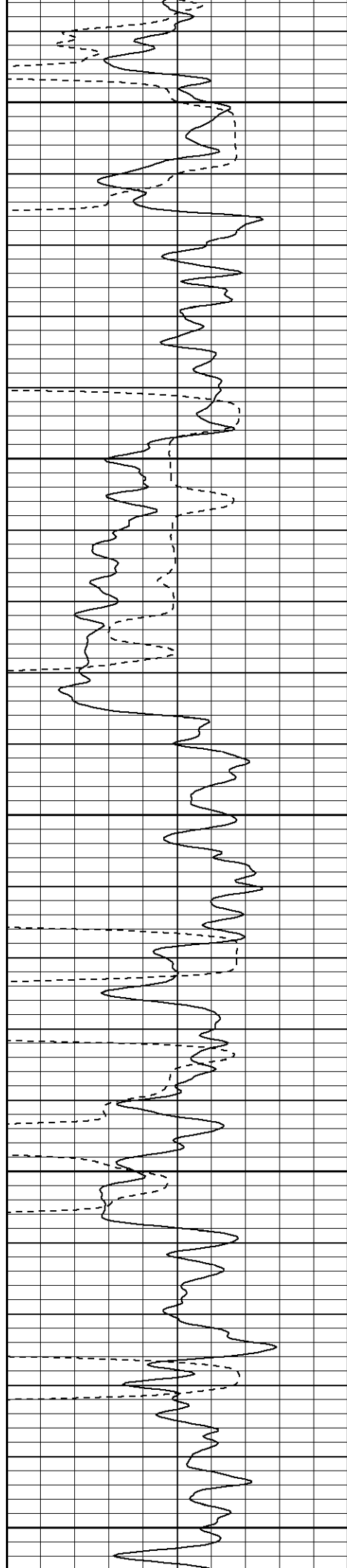
900

950

1000

1050





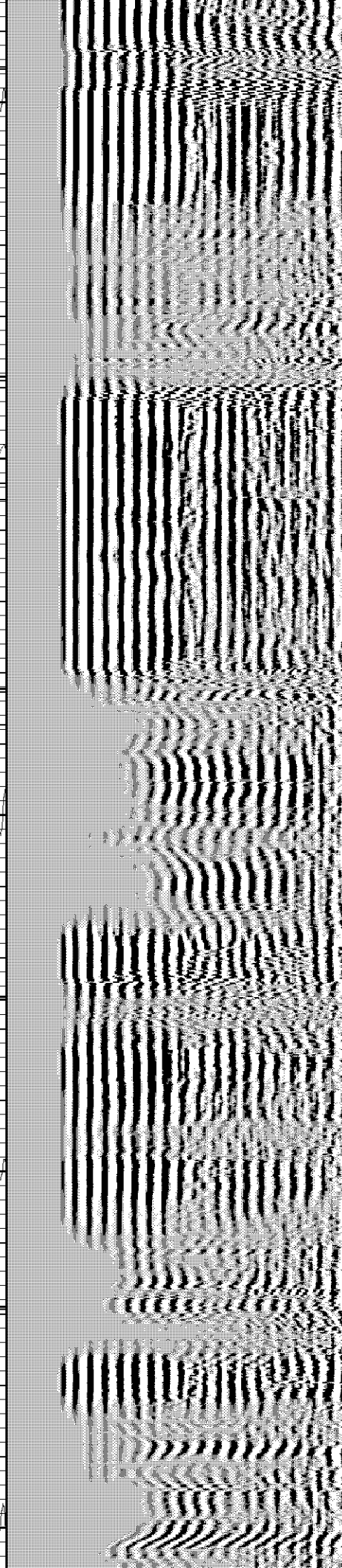
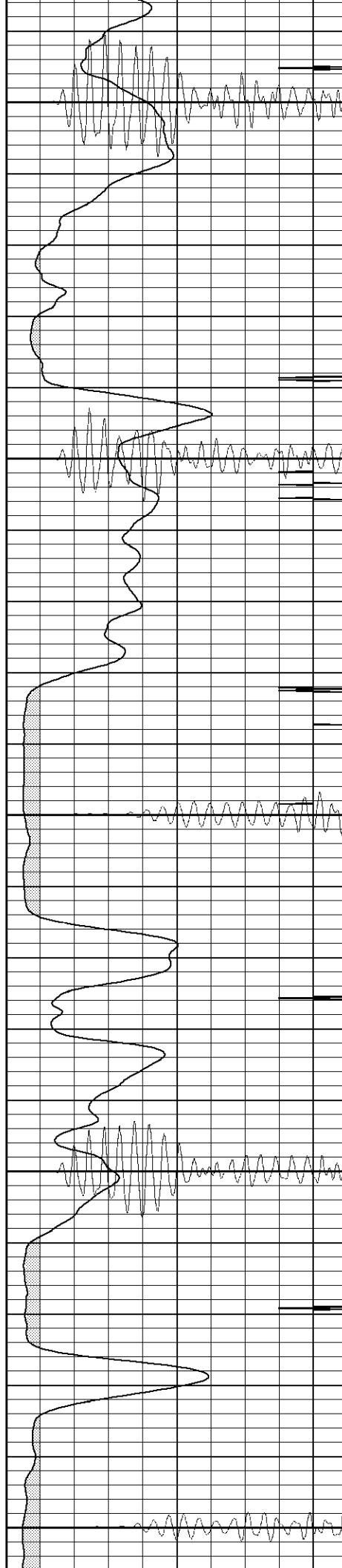
1100

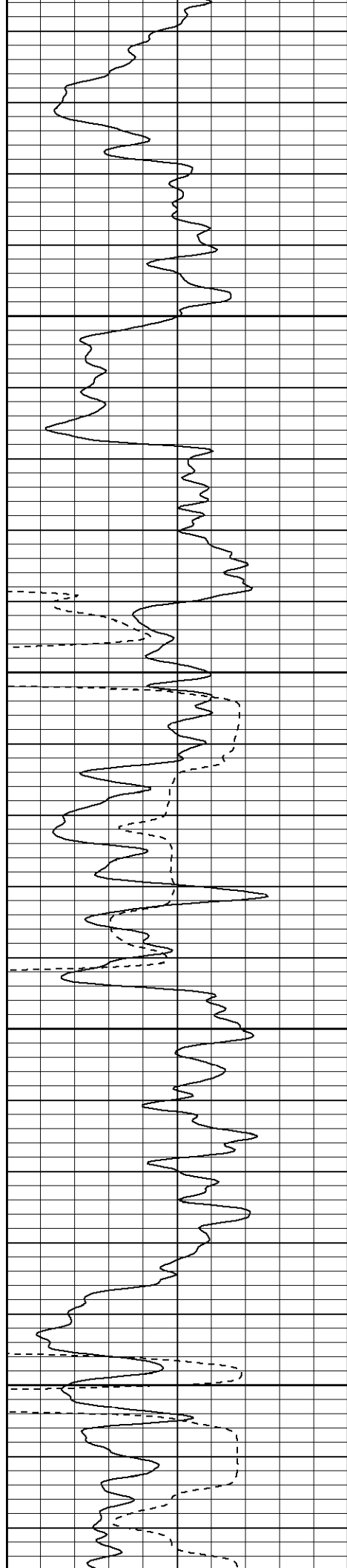
1150

1200

1250

1300



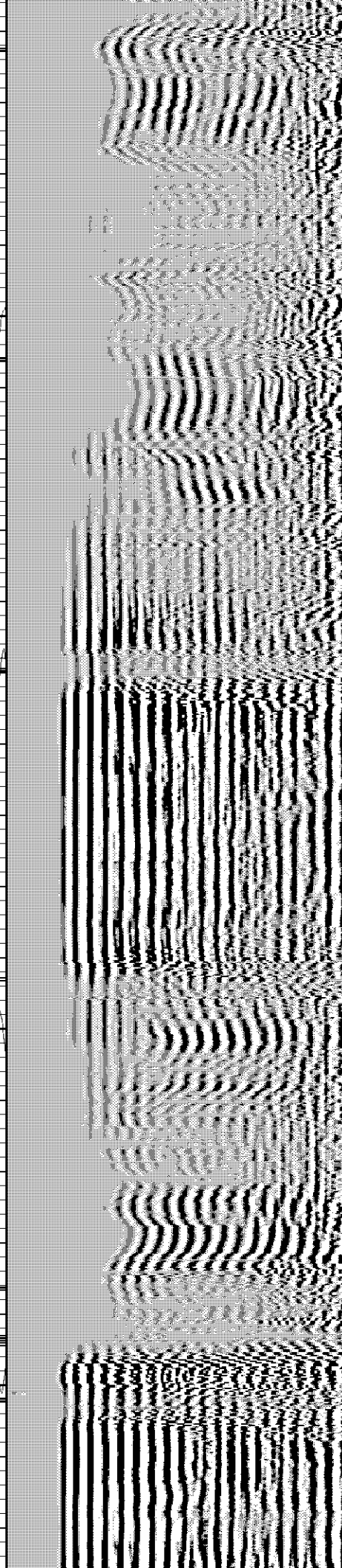
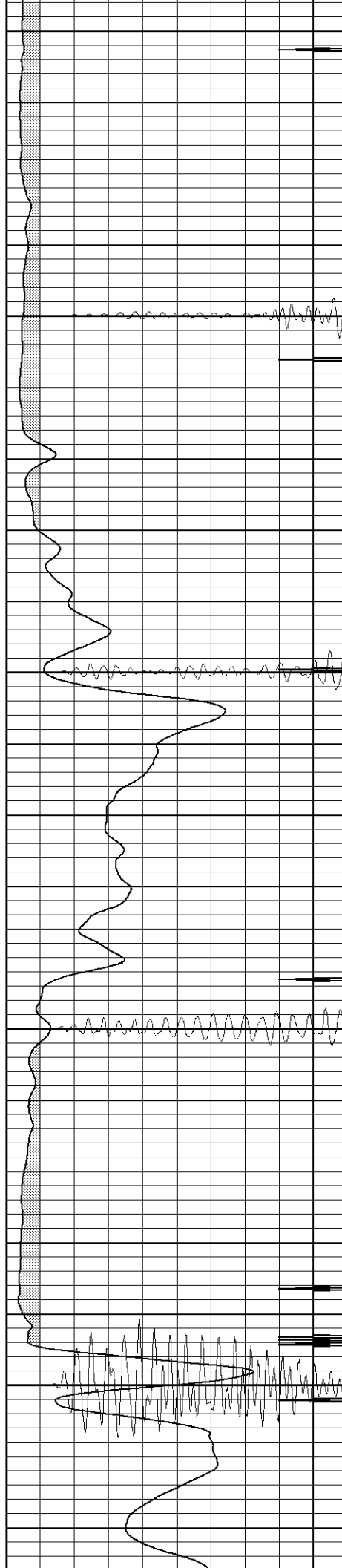


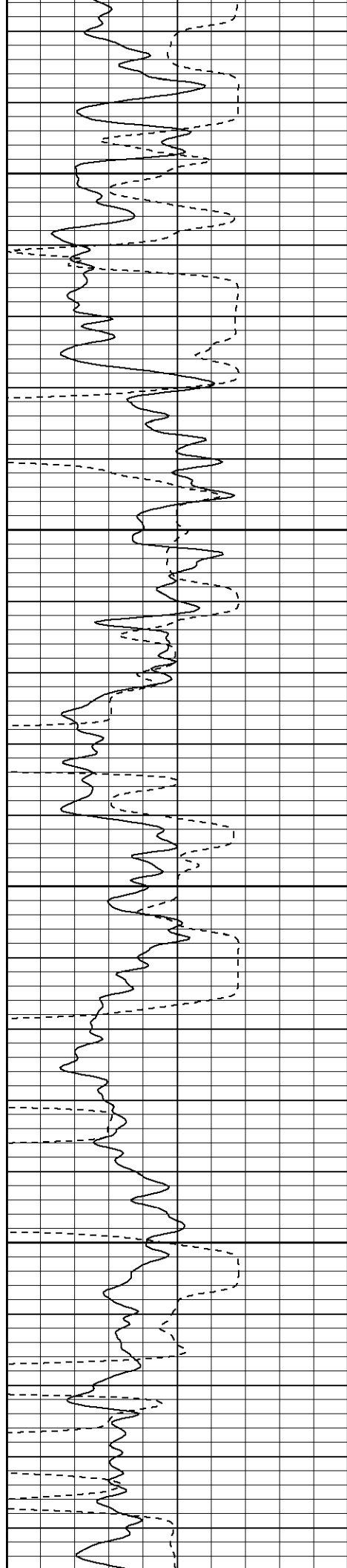
1350

1400

1450

1500



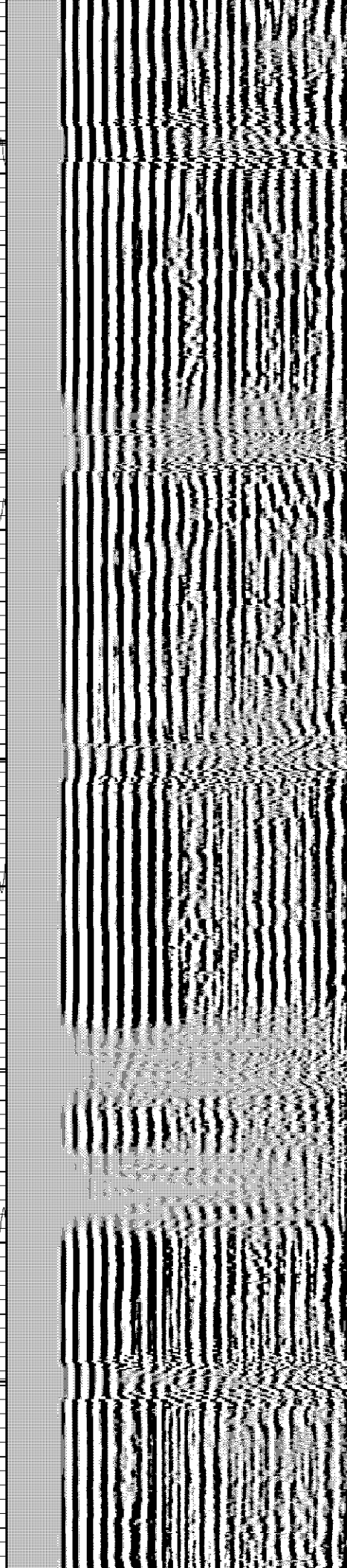
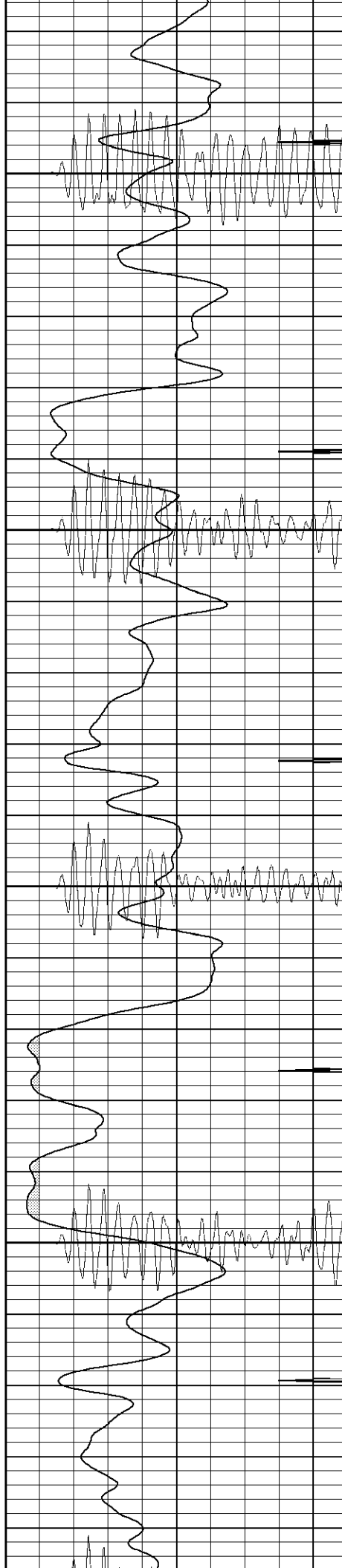


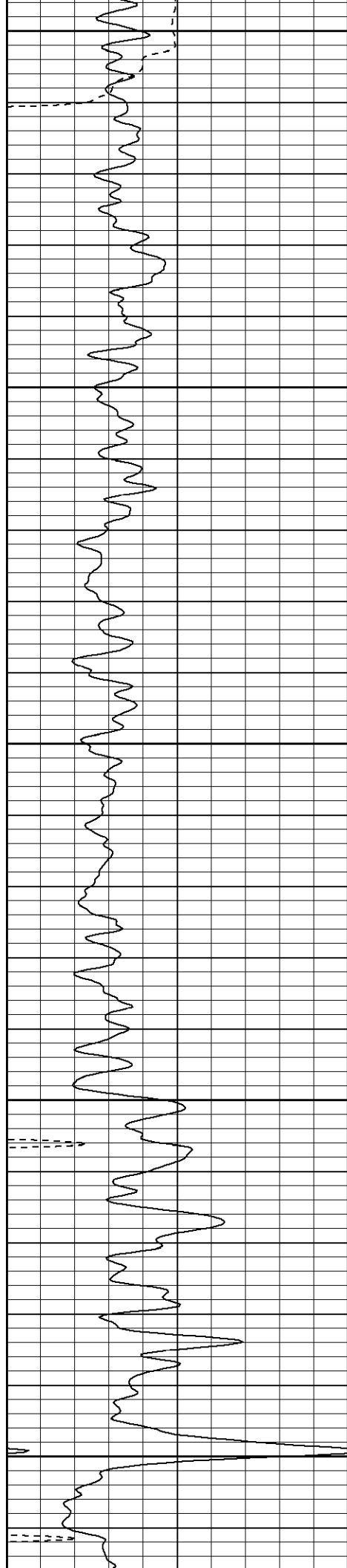
1550

1600

1650

1700





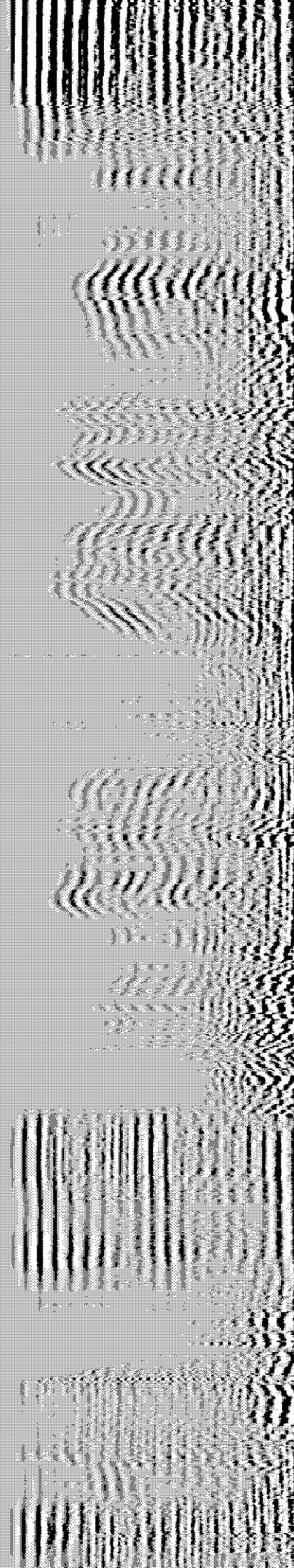
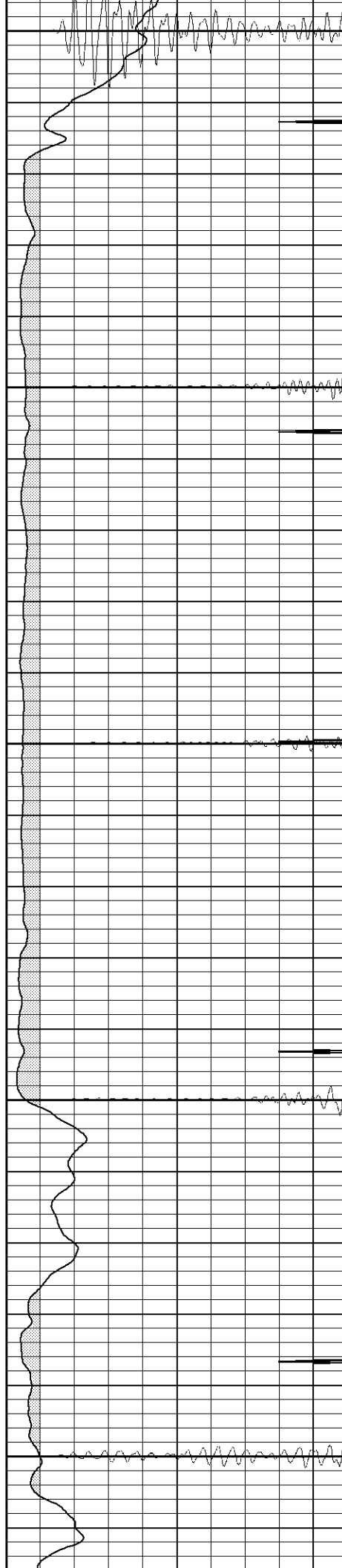
1750

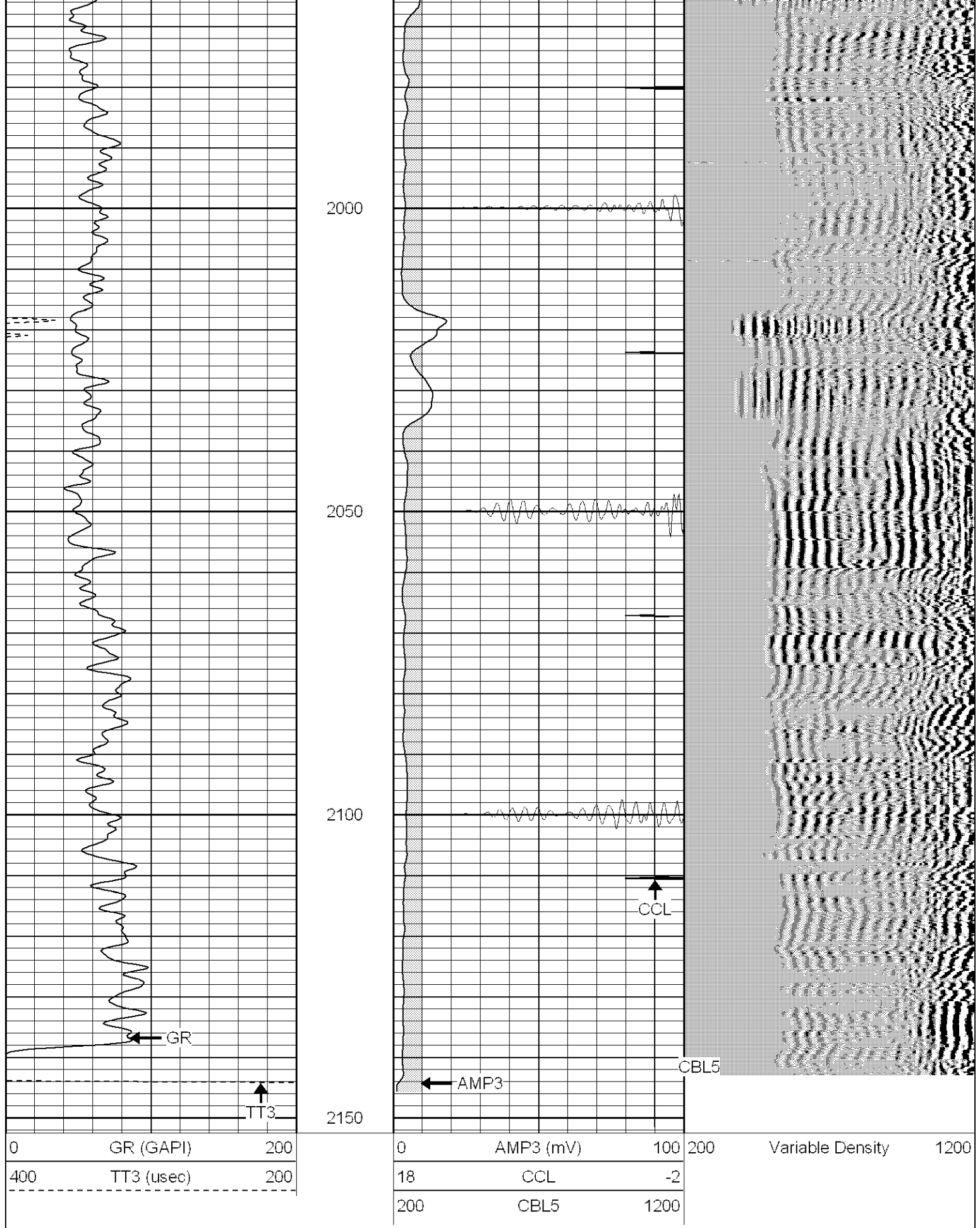
1800

1850

1900

1950





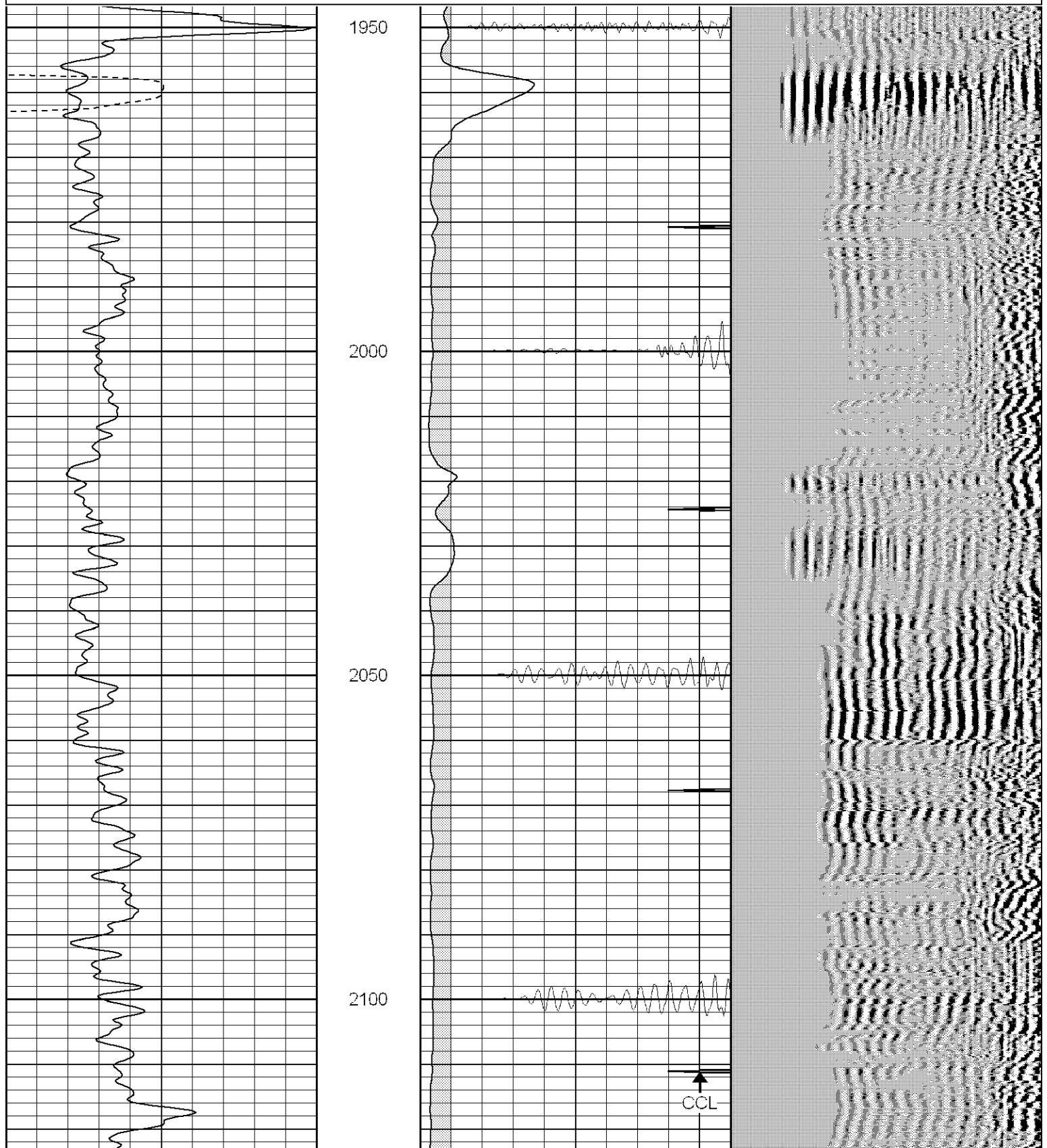
**SUPERIOR**  
Black Lick, Pa.  
Mercer, Pa.

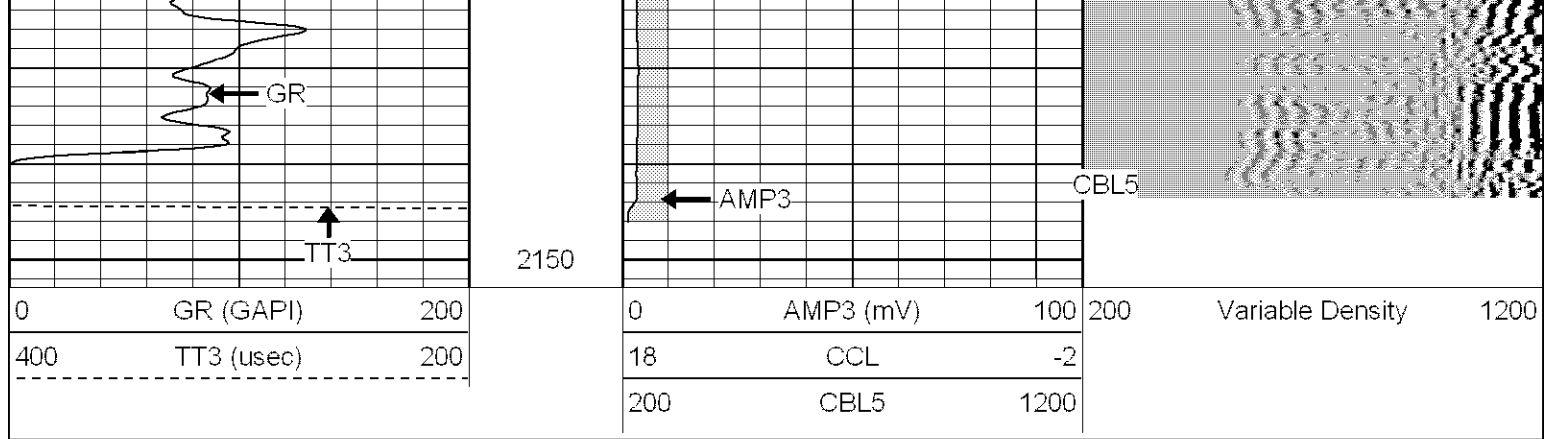
# Repeat Section 0 PSI

# Repeat Section 01 of 01

Database File: ac31-12b32607.db  
 Dataset Pathname: pass1  
 Presentation Format: cblrt  
 Dataset Creation: Mon Mar 26 12:27:03 2007 by Log Open-Cased 061129  
 Charted by: Depth in Feet scaled 1:240

0	GR (GAPI)	200	0	AMP3 (mV)	100	200	Variable Density	1200
400	TT3 (usec)	200	18	CCL	-2			
-----			200	CBL5	1200			





### Calibration Report

Database File: ac31-12b32607.db  
 Dataset Pathname: pass1  
 Dataset Creation: Mon Mar 26 12:27:03 2007 by Log Open-Cased 061129

### Cement Bond Log Calibration Report

Serial Number:	Titan5		
Tool Model:	T5		
Performed:	Mon Mar 26 12:16:37 2007		
Depth:	0	ft	
Casing Diameter:	0	in	
	3' Spacing	5' Spacing	
Signal Zero:	0	0	mV
Calibrated Amplitude:	85	85	mV
Reading at Signal Zero:	-0.02	0.01	V
Reading in Free Pipe:	1.25	1.8	V
Gain:	66.9291	47.486	
Offset:	1.33858	-0.47486	

### Gamma Ray Calibration Report

Serial Number:	Titan5	
Tool Model:	T5	
Performed:	Fri Aug 19 14:09:55 2005	
Calibrator Value:	1.0	GAPI
Background Reading:	0.0	cps
Calibrator Reading:	1.0	cps
Sensitivity:	1.0000	GAPI/cps