

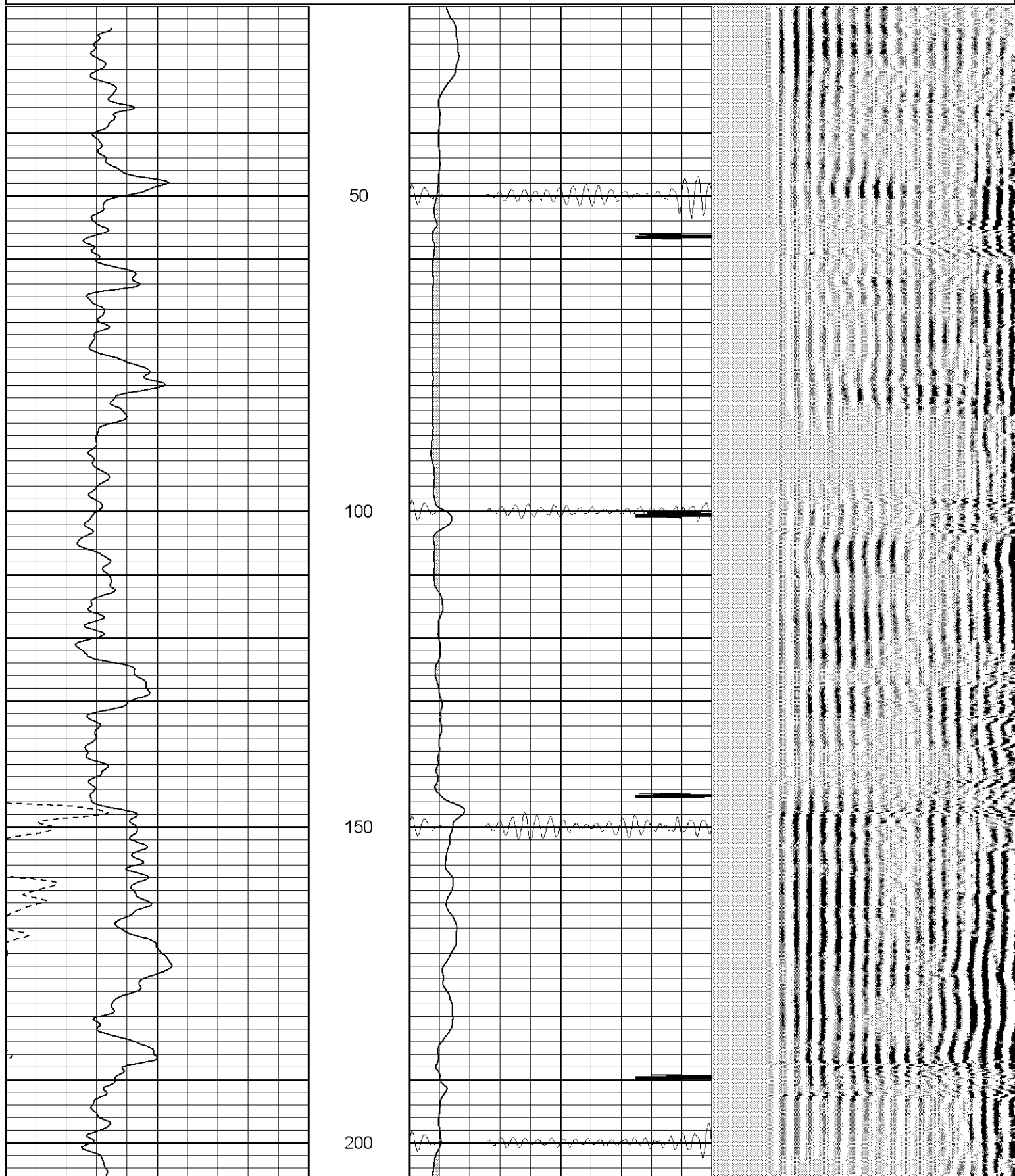
# CEMENT BOND LOG

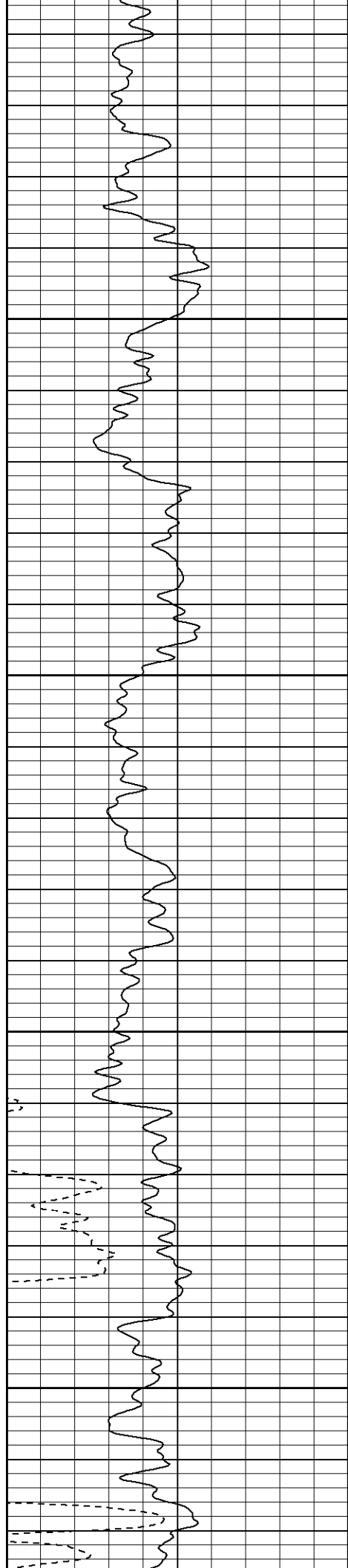
<<< Fold Here >>>
All interpretations are opinions based on inferences from electrical or other measurements and we cannot and do not guarantee the accuracy or correctness of any interpretation, and we shall not, except in the case of gross or willful negligence on our part, be liable or responsible for any loss, costs, damages, or expenses incurred or sustained by anyone resulting from any interpretation made by any of our officers, agents or employees. These interpretations are also subject to our general terms and conditions set out in our current Price Schedule.
Comments
<p>Well Directions:</p> <p>Bon Carbo Right At The Post Office, Left At County Road 51.0, Third Left, Thru The Trojan, First Left After The Trojan, Second Left To Location. 2.5 Degrees Deviated At Logger T.D.</p>

# Main Pass

Database File: manville62005b.db  
Dataset Pathname: pass5.1  
Presentation Format: cblrt  
Dataset Creation: Tue Jun 21 15:33:11 2005 by Calc Warrior 7.0 STD Ope  
Charted by: Depth in Feet scaled 1:240

0	GR (GAPI)	200	0	AMP3 (mV)	100	200	Variable Density	1200
400	TT3 (usec)	200	18	CCL	-2			
-----			100	CBL5	1200			



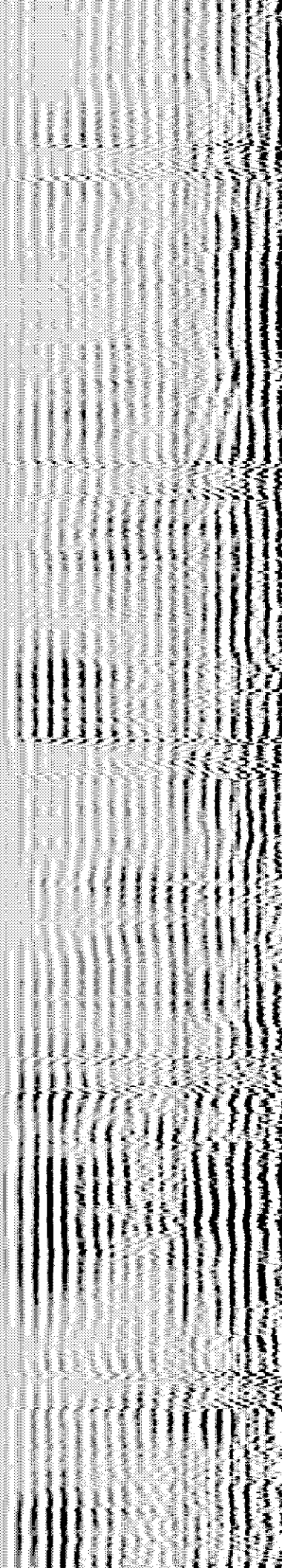
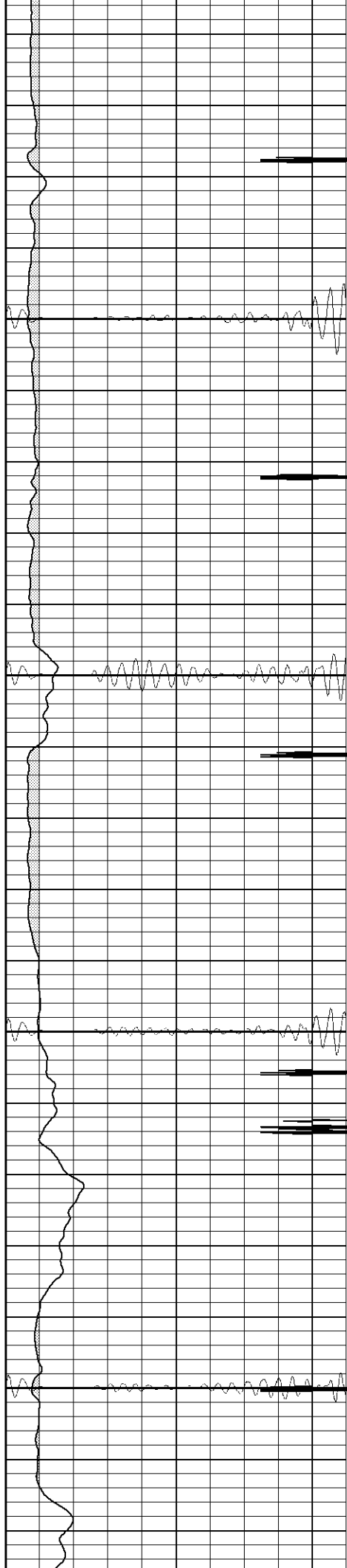


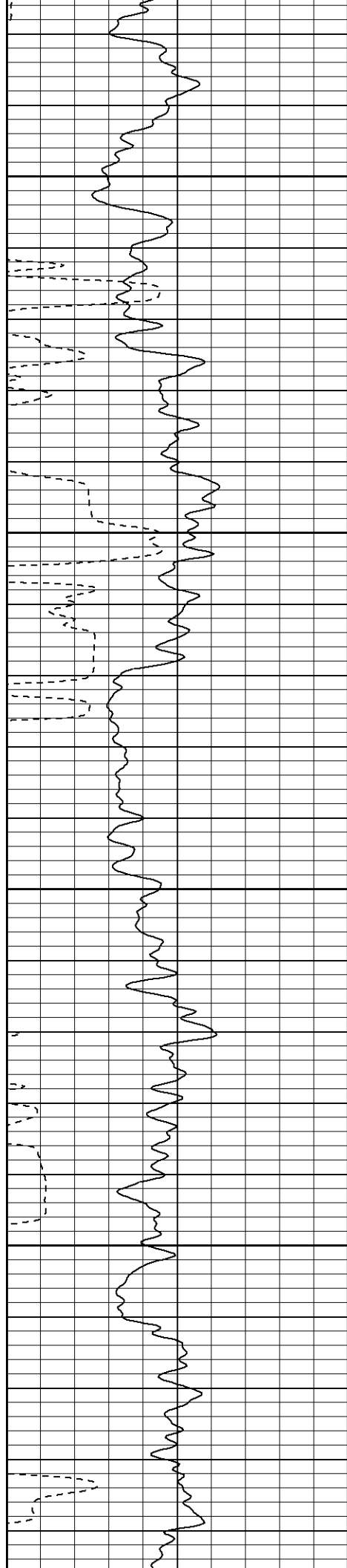
250

300

350

400



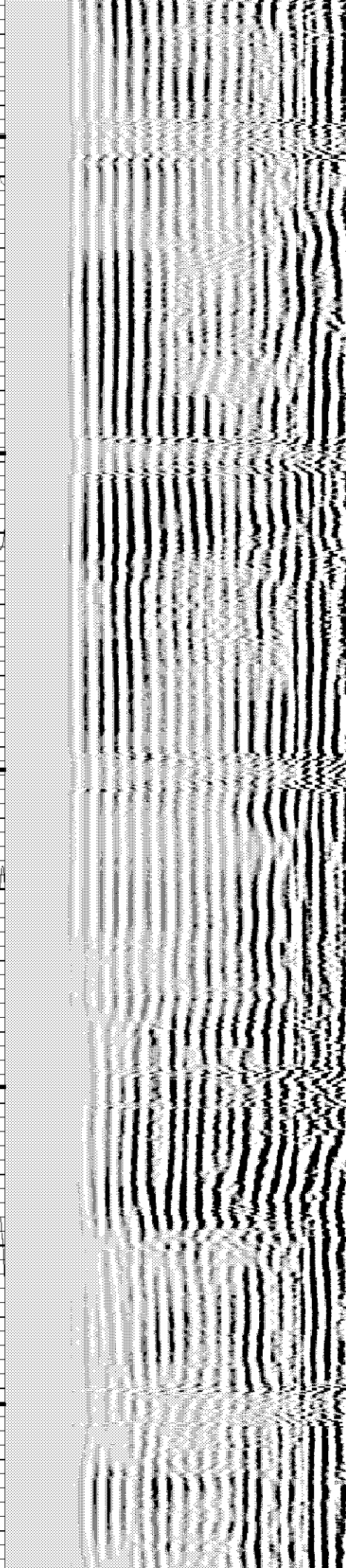
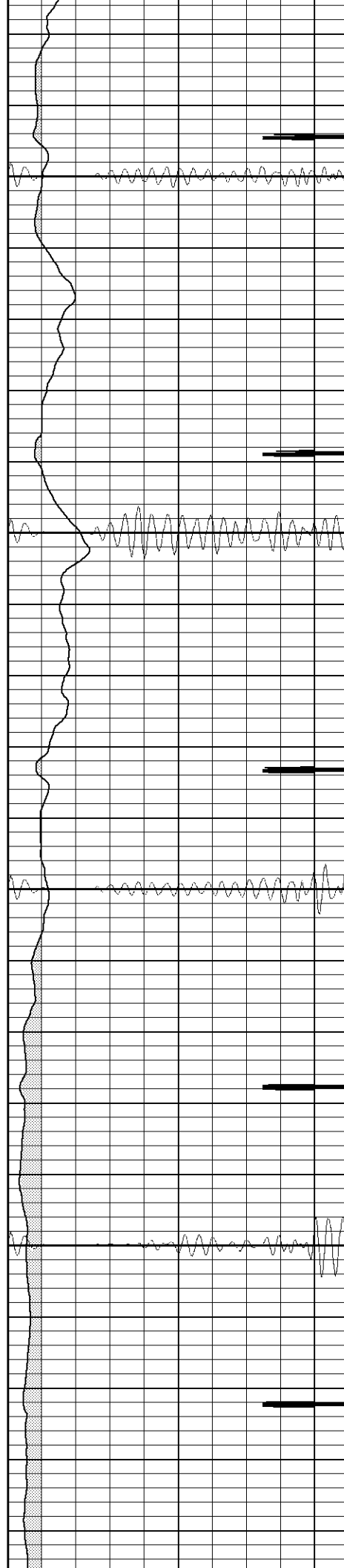


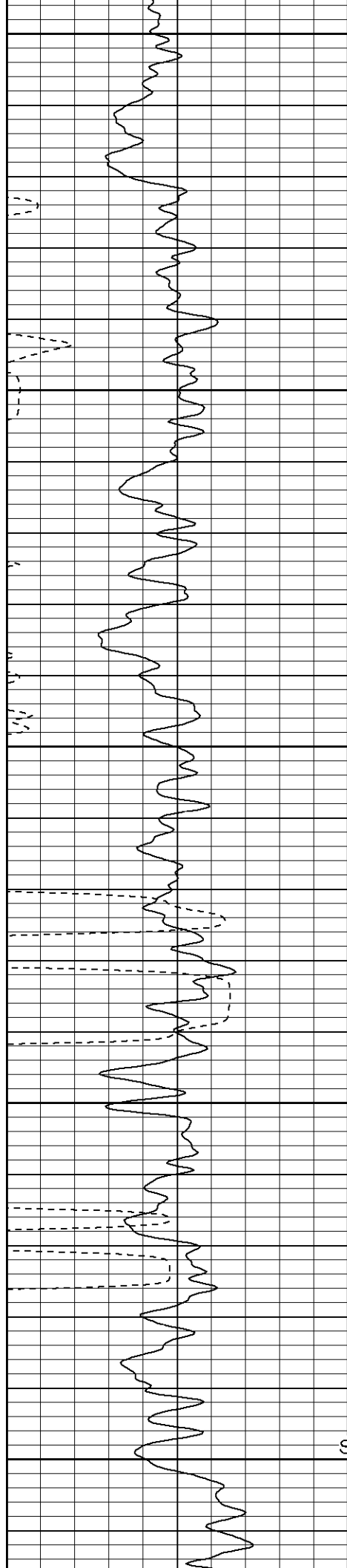
450

500

550

600





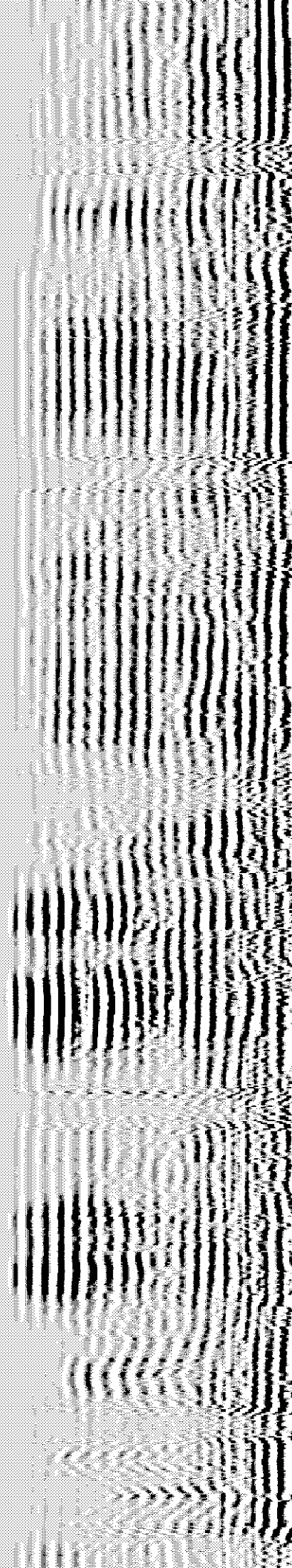
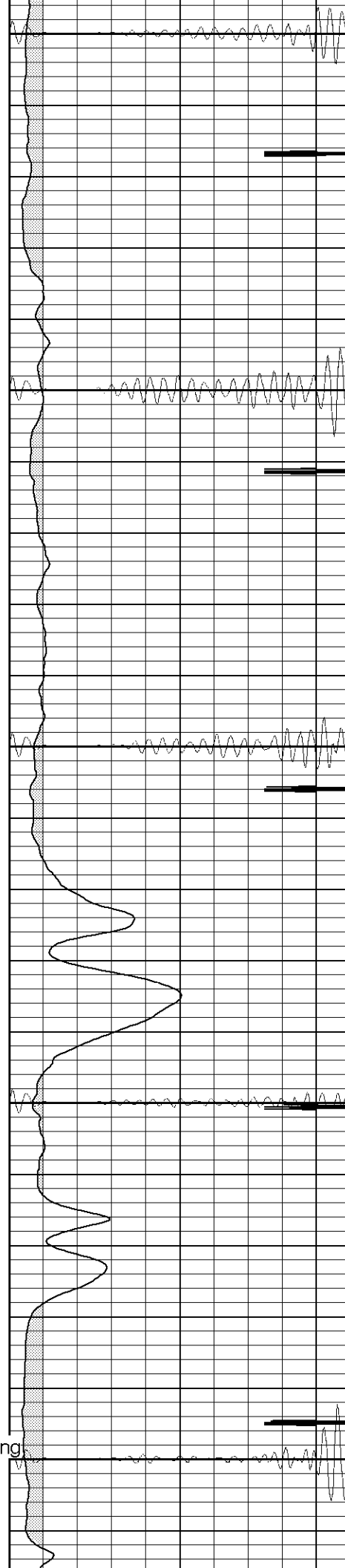
650

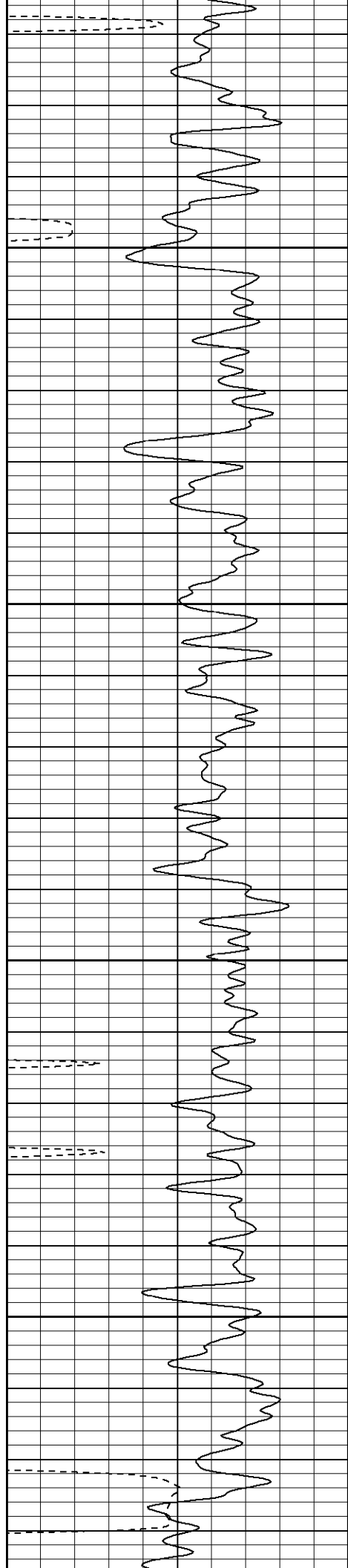
700

750

800

Surface Casing  
830



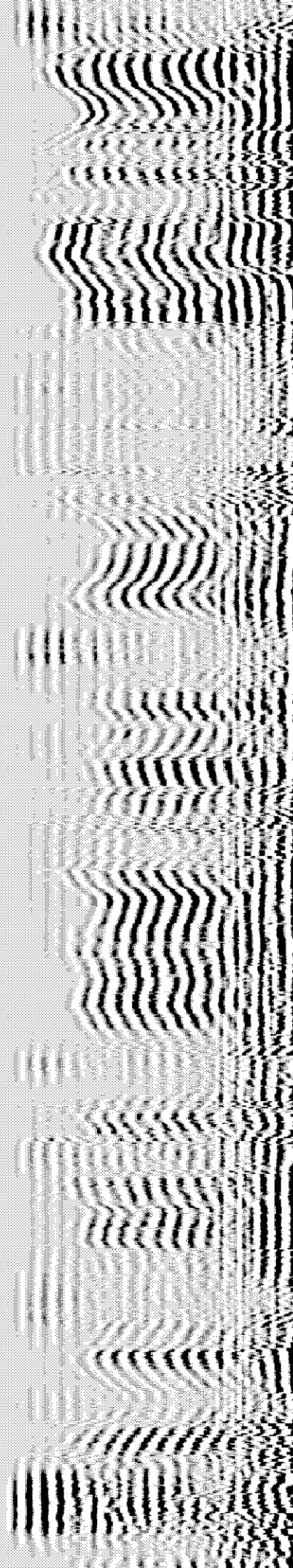
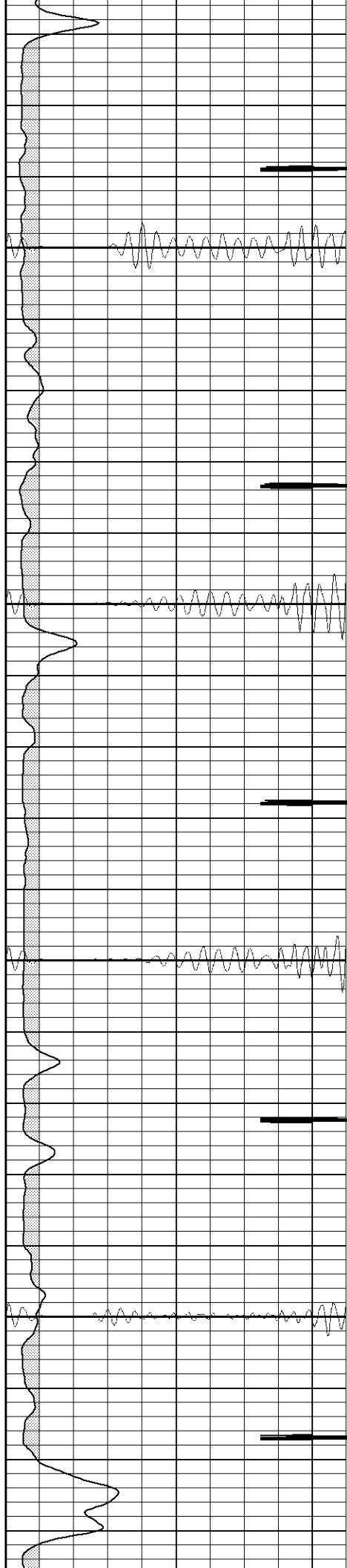


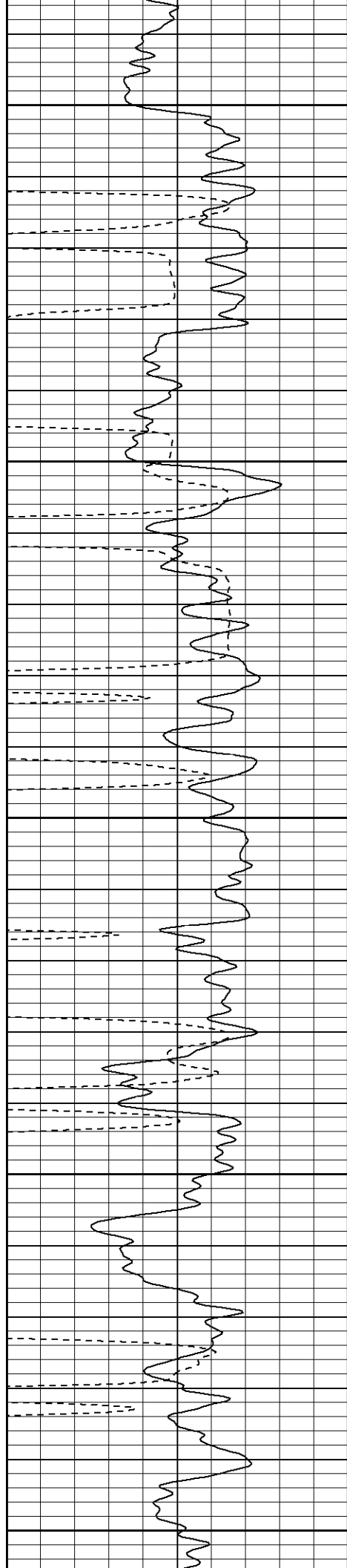
900

950

1000

1050





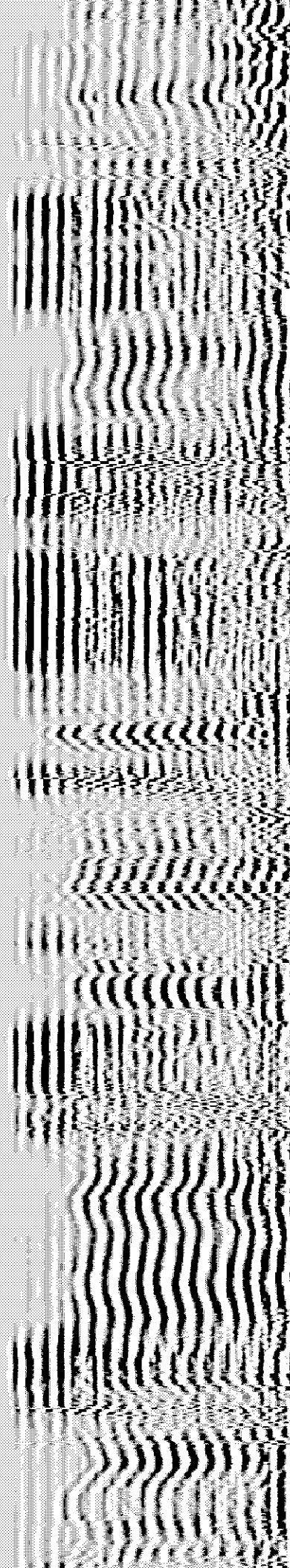
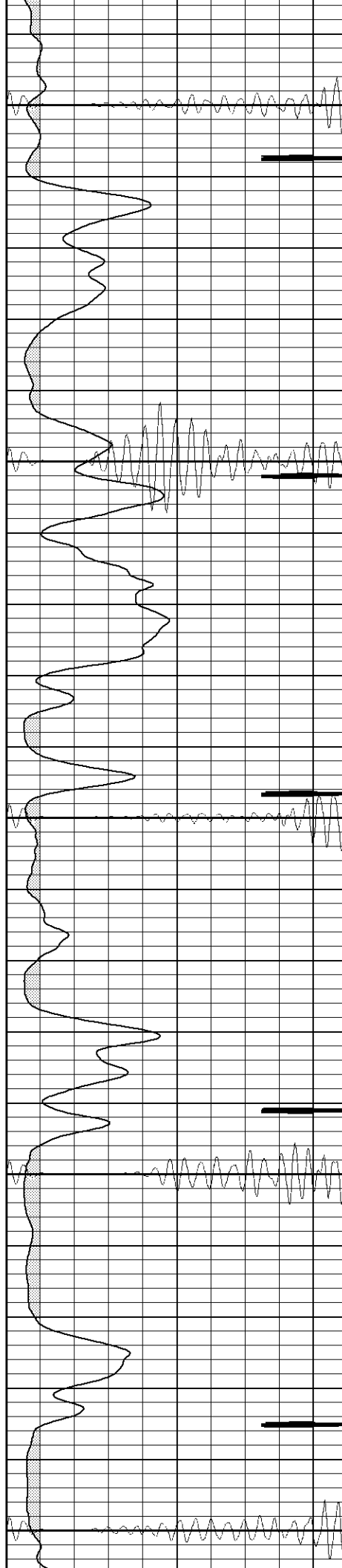
1100

1150

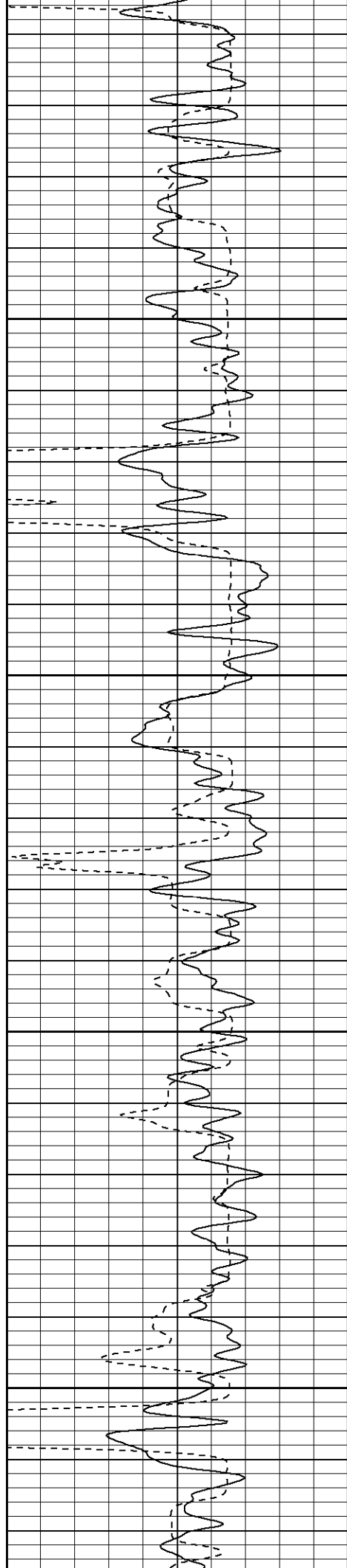
1200

1250

1300





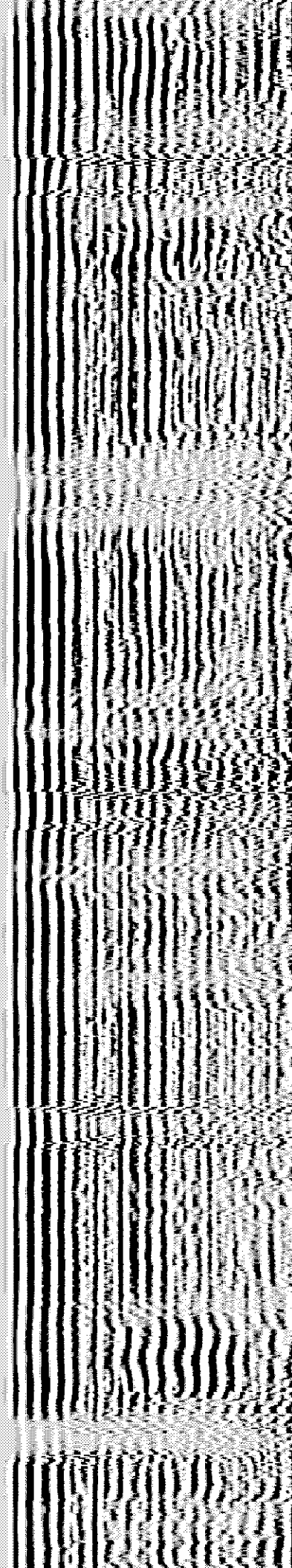
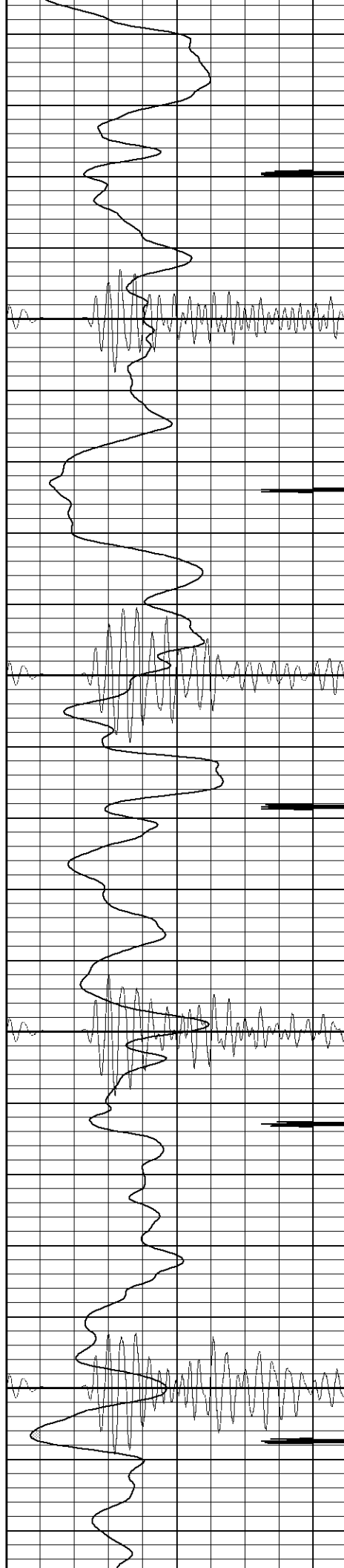


1350

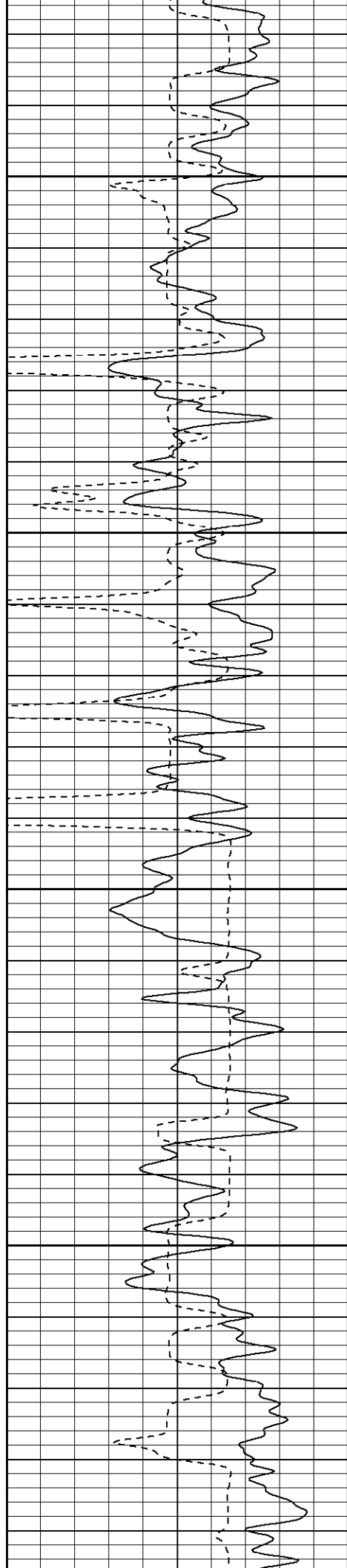
1400

1450

1500





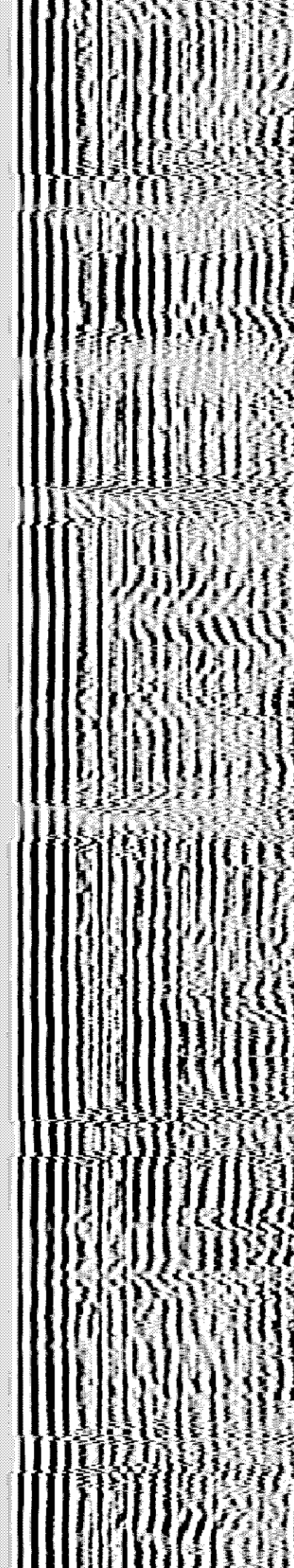
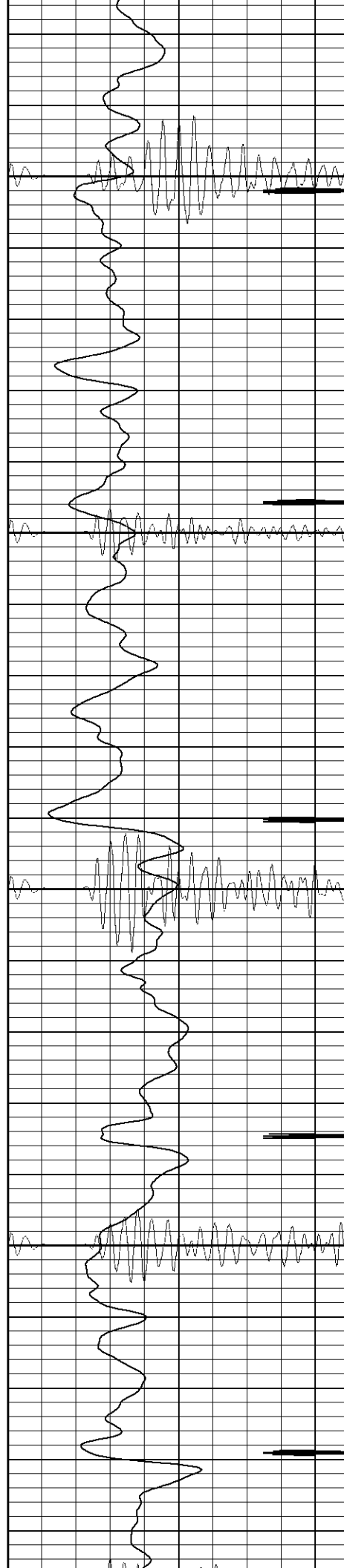


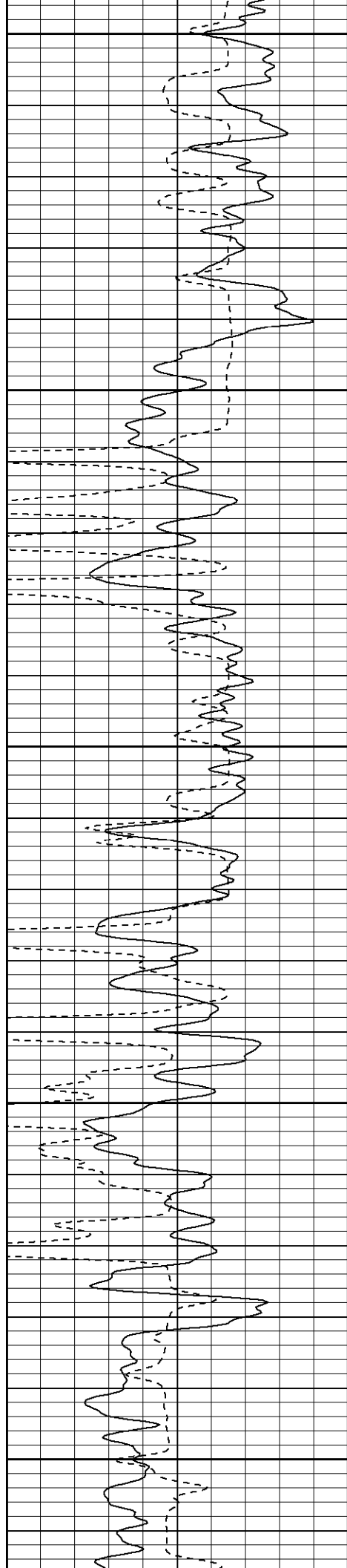
1550

1600

1650

1700





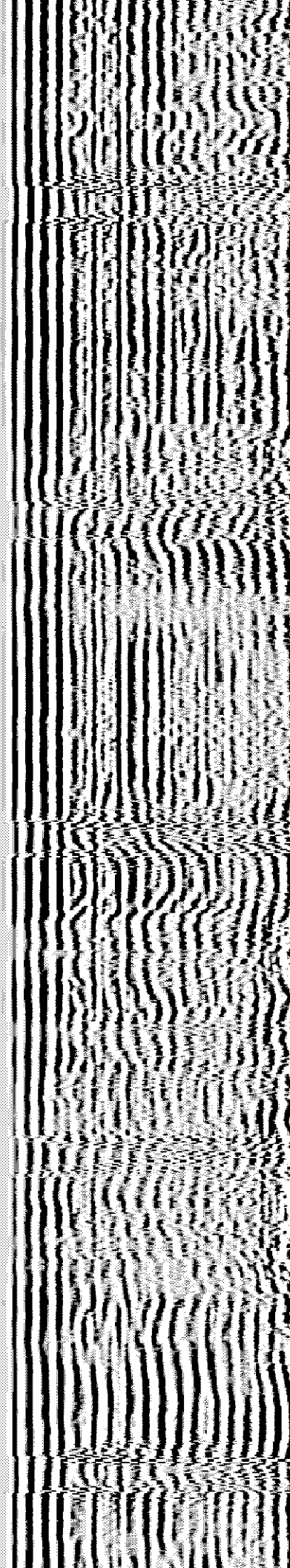
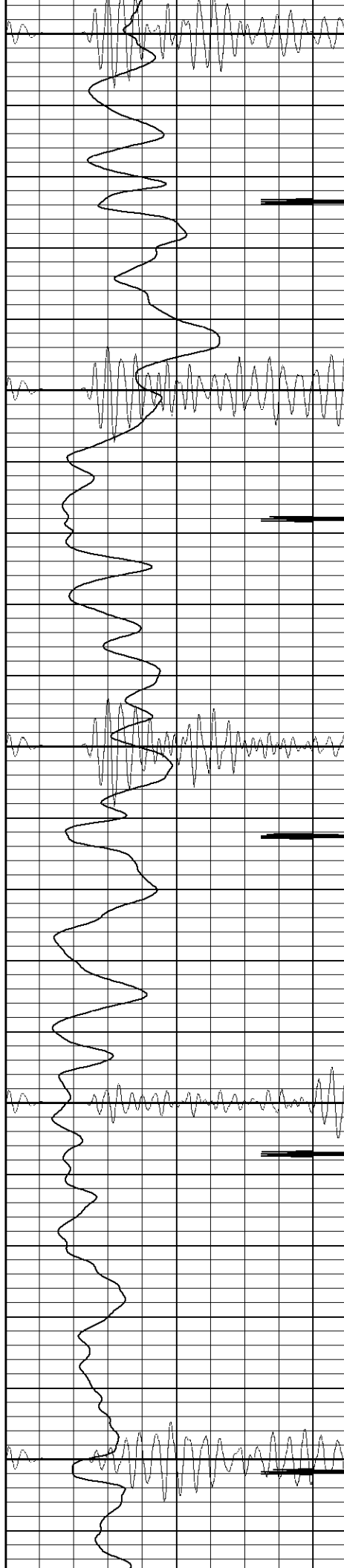
1750

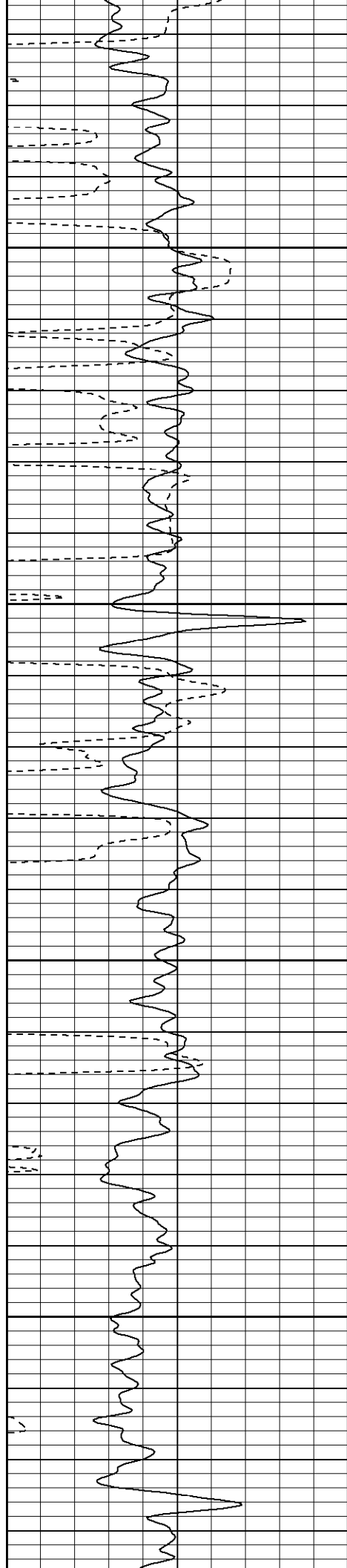
1800

1850

1900

1950



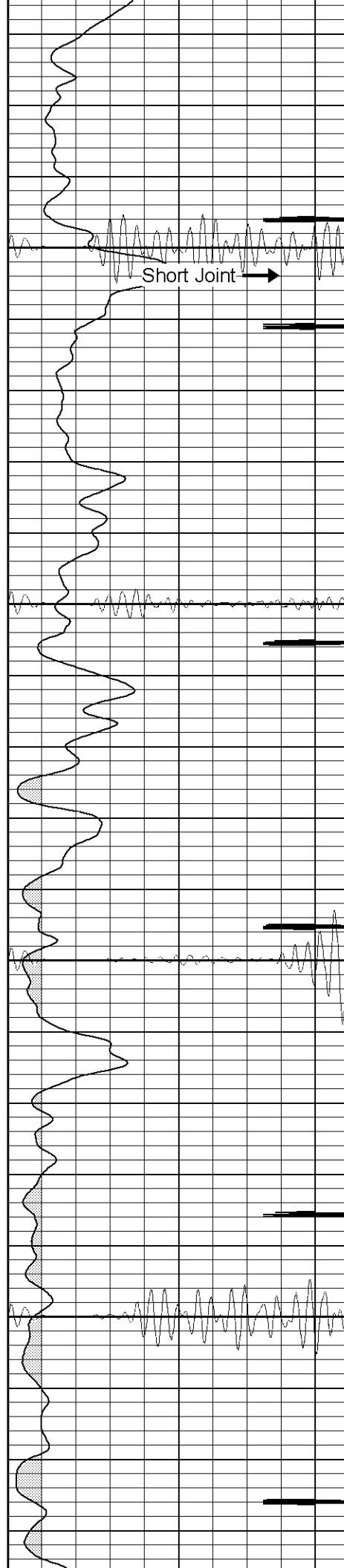


2000

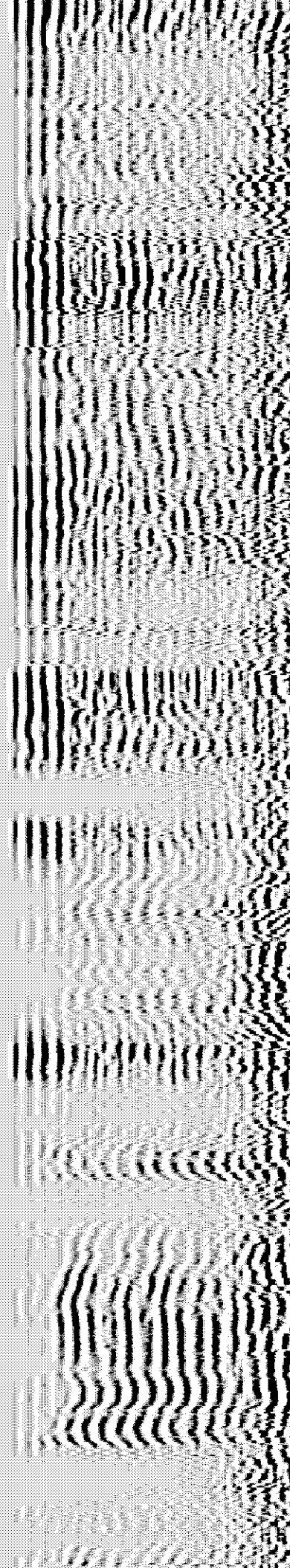
2050

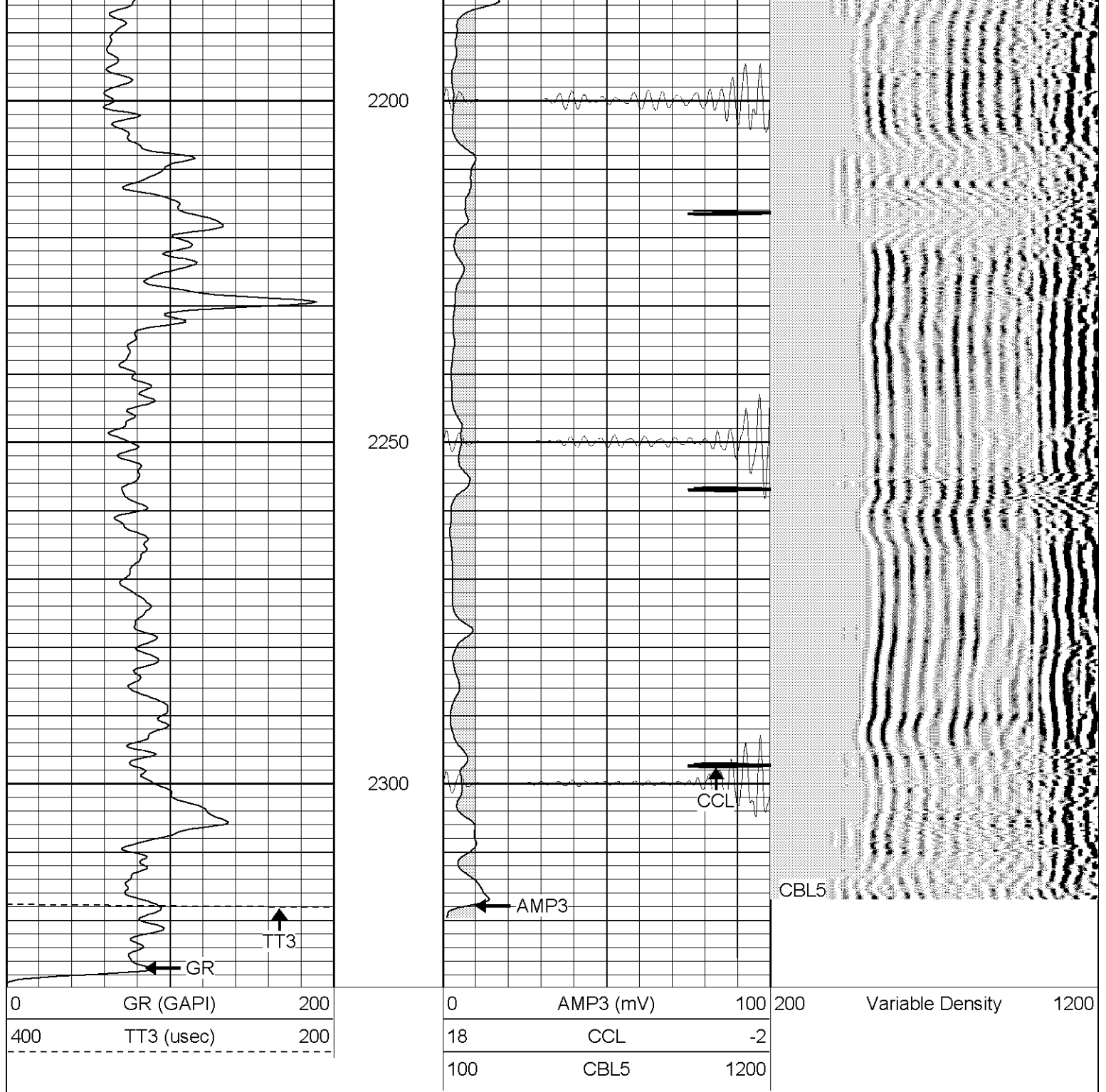
2100

2150



Short Joint →



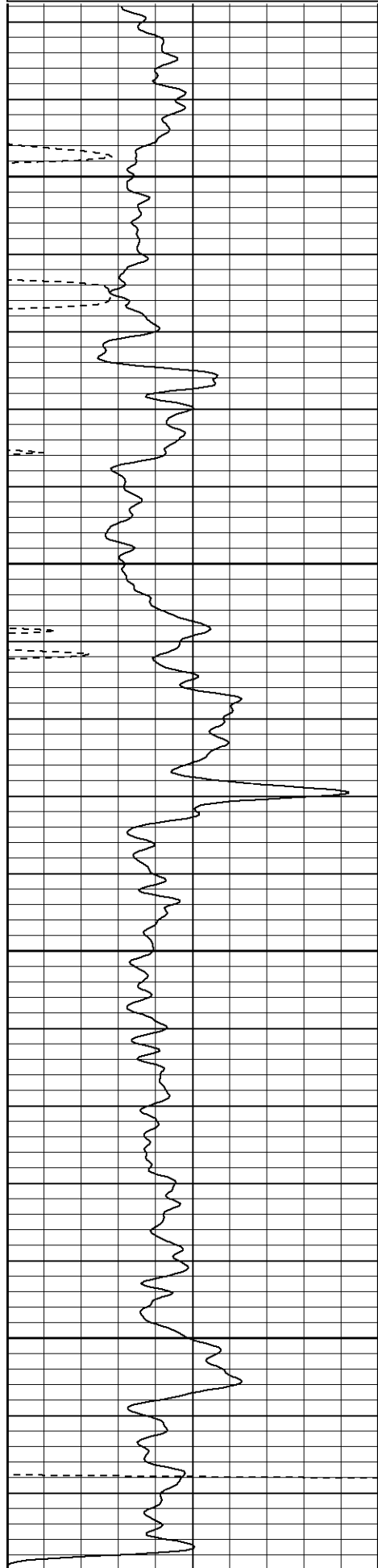


**Patterson**

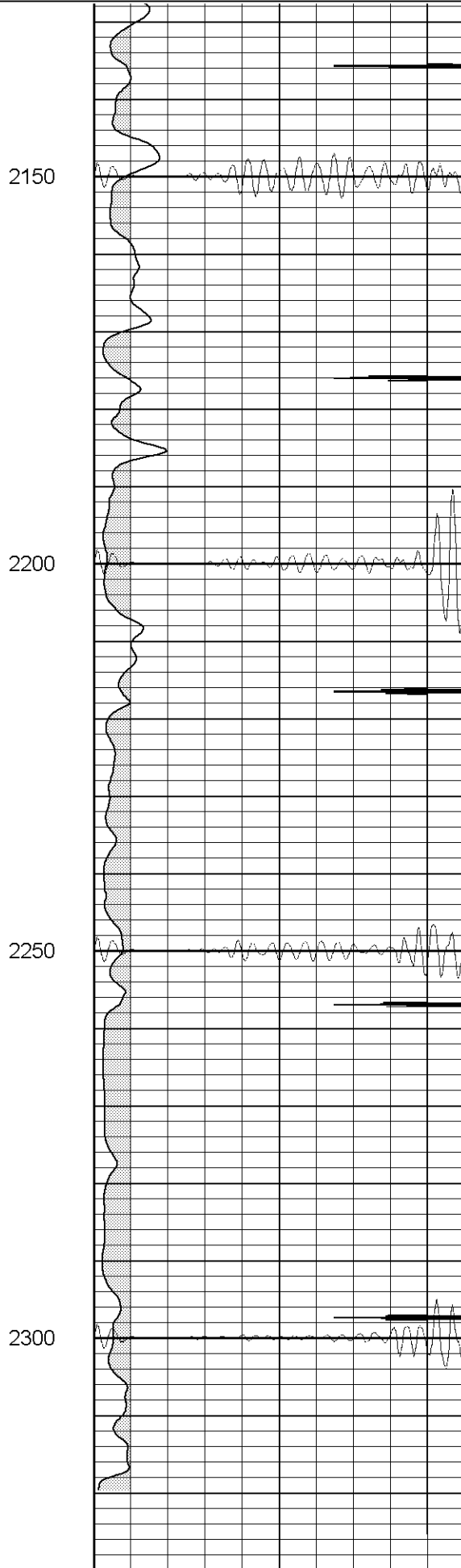
# Repeat Section

Database File: manville62005b.db  
 Dataset Pathname: pass4.1  
 Presentation Format: cblrt  
 Dataset Creation: Tue Jun 21 14:36:59 2005 by Calc Warrior 7.0 STD Ope  
 Charted by: Depth in Feet scaled 1:240

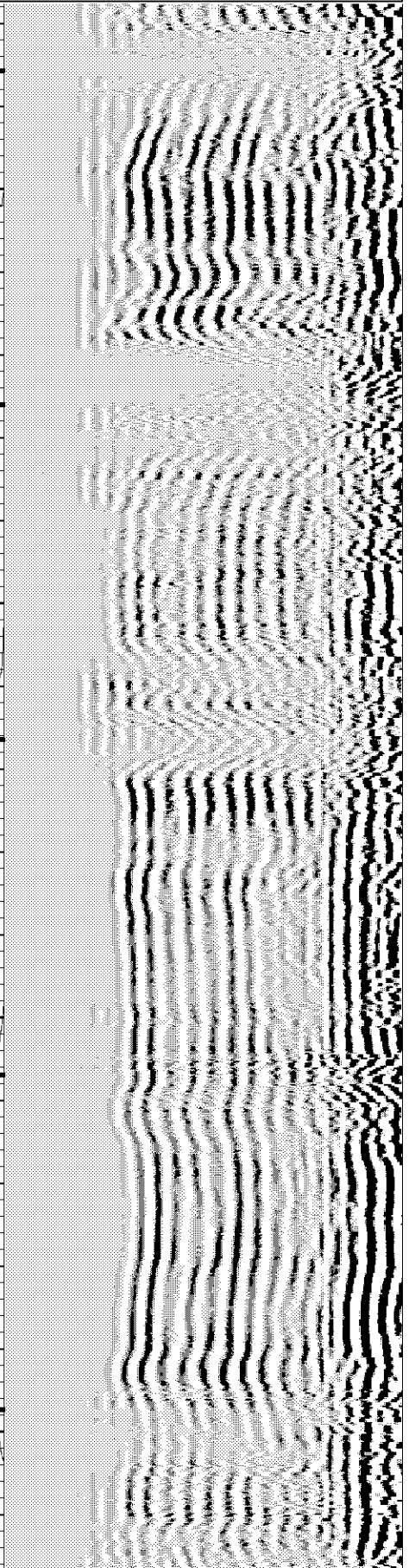
0	GR (GAPI)	200	0	AMP3 (mV)	100	200	Variable Density	1200
400	TT3 (usec)	200	18	CCL	-2			
			100	CBL5	1200			



0	GR (GAPI)	200
400	TT3 (usec)	200



0	AMP3 (mV)	100
18	CCL	-2
100	CBL5	1200



200	Variable Density	1200
-----	------------------	------

Gamma Ray Calibration Report
------------------------------

Serial Number:	2.75	
Tool Model:	Titan2.75	
Performed:	Wed Jun 15 14:32:29 2005	
Calibrator Value:	1.0	GAPI
Background Reading:	0.0	cps
Calibrator Reading:	1.0	cps
Sensitivity:	0.9500	GAPI/cps

# Cement Bond Log Calibration Report

Serial Number:	Titan1		
Tool Model:	T1		
Performed:	Tue Jun 21 14:20:54 2005		
Depth:	0	ft	
Casing Diameter:	0	in	
	3' Spacing	5' Spacing	
Signal Zero:	1	1	mV
Calibrated Amplitude:	85	85	mV
Reading at Signal Zero:	-0.01	-0.01	V
Reading in Free Pipe:	1.85	2.35	V
Gain:	45.1613	35.5932	
Offset:	1.45161	1.35593	

Sensor	Offset (ft)	Schematic	Description	Len (ft)	OD (in)	Wt (lb)
CHD	20.38		None	0.75	1.50	5.00
CENT	19.63		X	3.00	1.69	25.00
WVF5	12.82		CBL-T1 (Titan1) Titan1	8.15	2.25	110.00
WVF3	11.82					
CENT	8.48		X	3.00	1.69	25.00
CCL	4.27		CCL-Titan2.75 (2.75)	1.71	2.75	15.00
GR	1.42		GR-Titan2.75 (2.75)	3.77	2.75	40.00

Dataset:	/field/well/run1/_plots/_/jobs_/cbl2
Total Length:	20.38 ft
Total Weight:	220.00 lb
O.D.	2.75 in