



COMPENSATED DENSITY  
DUAL INDUCTION

Company  
Well  
Field  
County  
State/Province

Company  
Well  
Field  
County  
State/Province

Company  
Well  
Field  
County  
State/Province

Company  
Well  
Field  
County  
State/Province

Company  
Well  
Field  
County  
State/Province

Company  
Well  
Field  
County  
State/Province

Company  
Well  
Field  
County  
State/Province

Company  
Well  
Field  
County  
State/Province

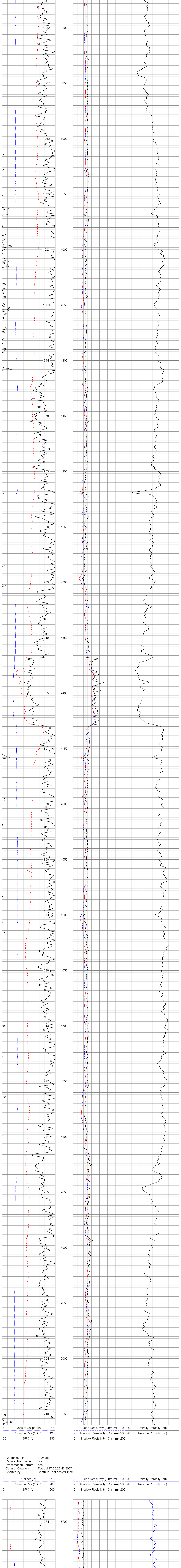
Company  
Well  
Field  
County  
State/Province

All interpretations are opinions based on inferences from electrical or other measurements and we cannot and do not guarantee the accuracy or correctness of any interpretation, and we shall not except in the case of gross or willful negligence on our part be liable or responsible for any loss, costs, damages, or expenses incurred or sustained by anyone resulting from any interpretation made by any of our officers, agents or employees. These interpretations are also subject to our general terms and conditions set out in our current Price Schedule.

Comments

Annular volume calculated for 4.5" casing  
Patterson Drilling Rig 34  
Thank you for using Phoenix Surveys!!  
API # 05-123-24826-00

Database File: 7494 db  
Dataset Pathname: final  
Presentation Format: pdc1  
Dataset Creation: Tue Jul 17 06:22:46 2007  
Charted by: Depth in Feet scaled 1,240



Database File: 7494 db  
Dataset Pathname: final  
Presentation Format: pdc1  
Dataset Creation: Tue Jul 17 06:22:46 2007  
Charted by: Depth in Feet scaled 1,240

