



CEMENT BOND GAMMA RAY COLLAR CORRELATION LOG

Company K. P. KAUFFMAN COMPANY

Well STROH 15-28

Field WATTENBERG

County WELD

State COLORADO

Location: API #: 05-123-26308-0000

Other Services

SW/SE

PERF

627' FSL & 1012' FEL

SEC 28 TWP 4N RGE 67W

Elevation

Permanent Datum GROUND LEVEL Elevation 4951

Log Measured From KELLY BUSHING

K.B. 4963

Drilling Measured From KELLY BUSHING

D.F. 4962

G.L. 4951

	16-OCT-2007		
	ONE		
	7490		
	7421		
Interval	7416		
	3590		
	7 7/8		
	WATER		
ty	---		
Temp.	NOT RECORDED		
ent Top	3754		
y	---		
Bottom	---		
ber	473/CR-30/YELLOW		
	BRIGHTON, CO.		
	CURT ERICKSON		
	RICK OHLEMEIER		

Borehole Record

Tubing Record

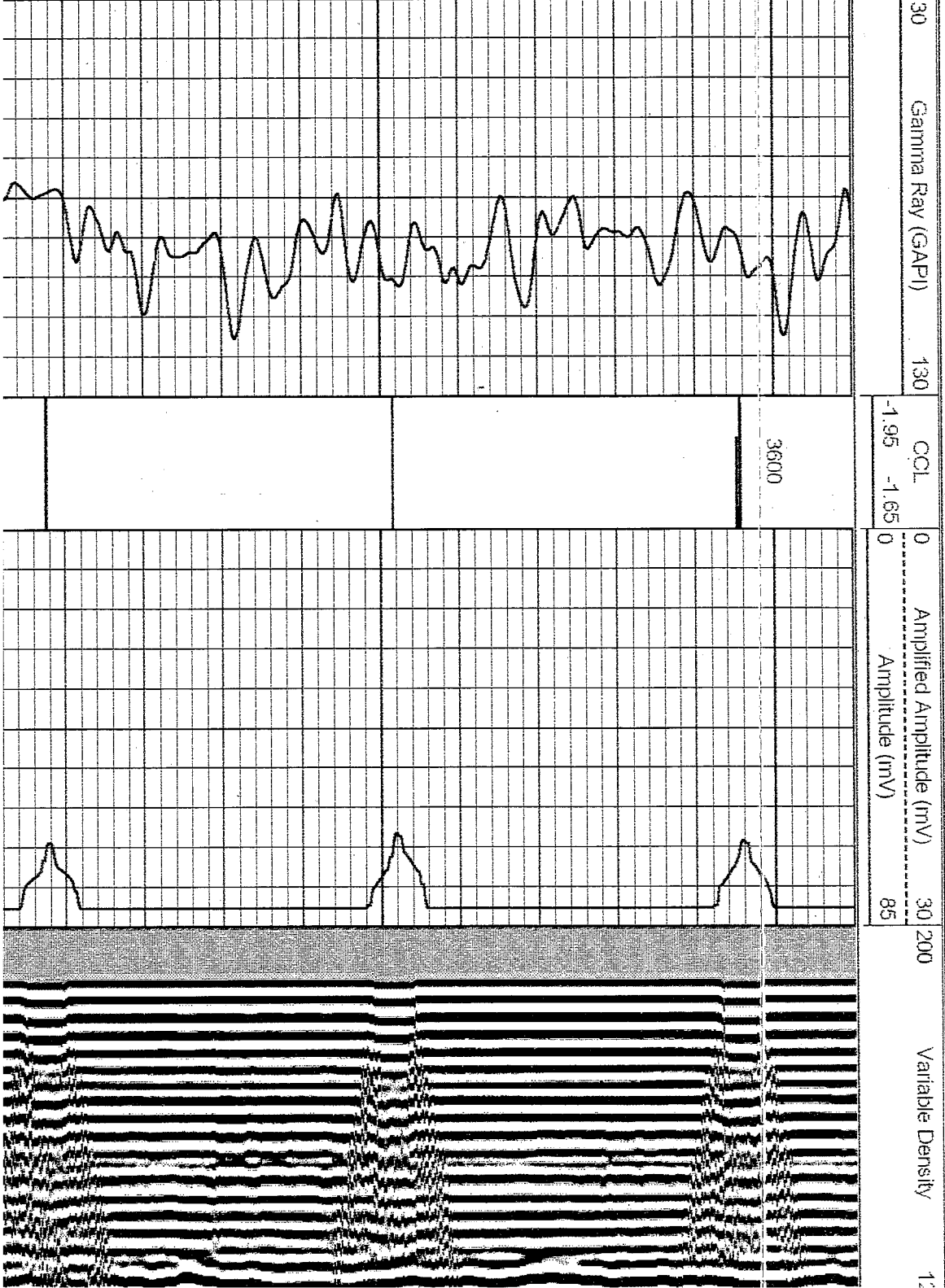
All interpretations are opinions based on inferences from electrical or other measurements and we cannot and do not guarantee the accuracy or correctness of any interpretation, and we shall not, except in the case of gross or willful negligence on our part, be liable or responsible for any loss, costs, damages or expenses incurred or sustained by anyone resulting from any interpretation made by any of our officers, agents or employees. These interpretations are also subject to our general terms and conditions set out in our current Price Schedule.

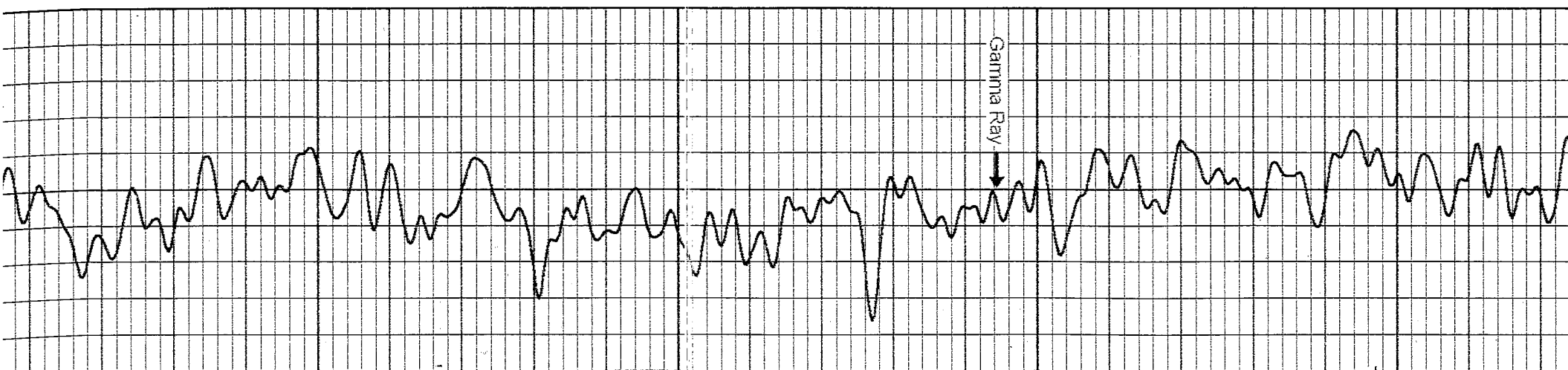
Comments

LOG CORRELATED TO CDN/GR/DIL DATED 10-OCT-2007

PERFORATIONS @ 7314 - 7334 WITH 4 JSPF

Database File: str15-28.dlb
Dataset Pathname: pass2
Presentation Format: cbix
Dataset Creation: Tue Oct 16 11:16:31 2007 by Log Std Casedhole 06040
Charted by: Depth in Feet scaled 1:240





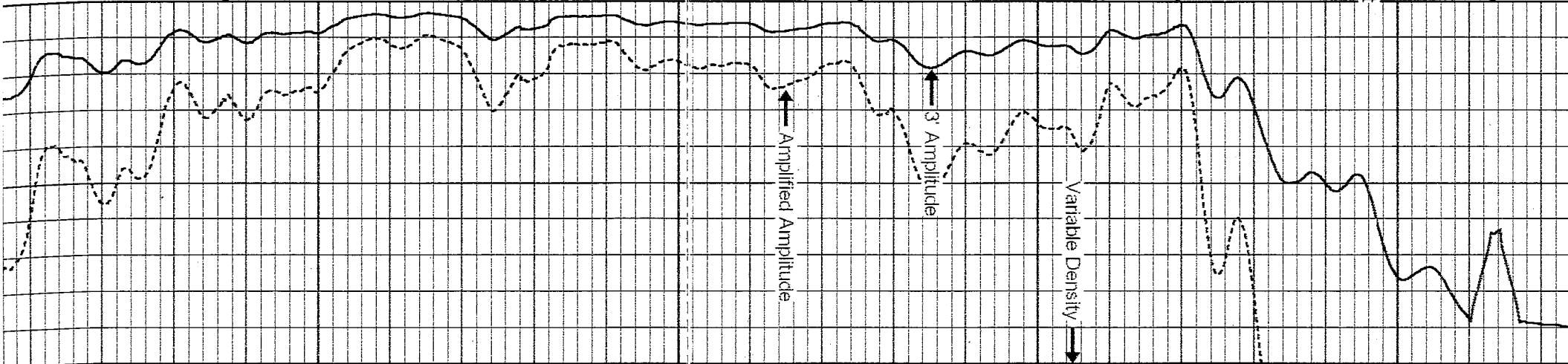
Gamma Ray



3900

3800

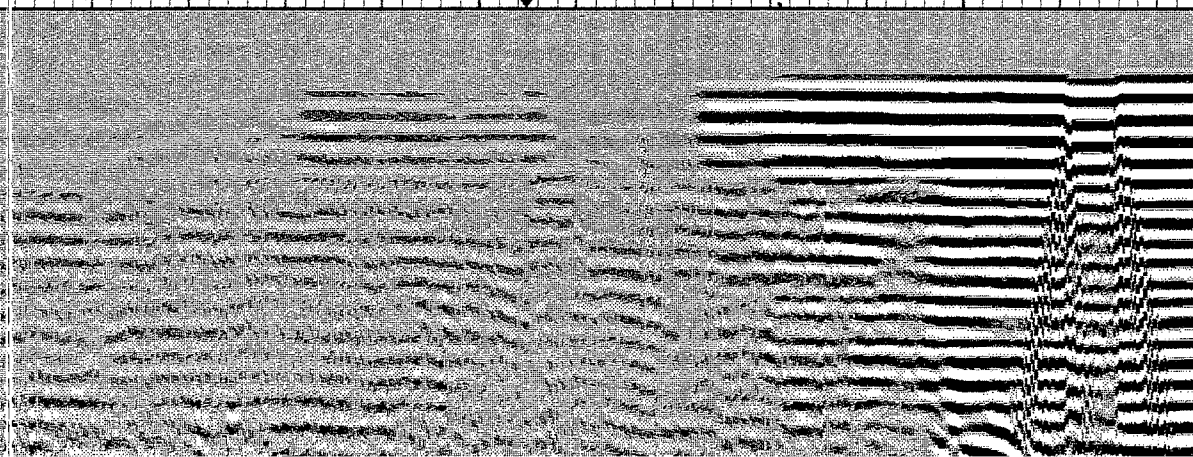
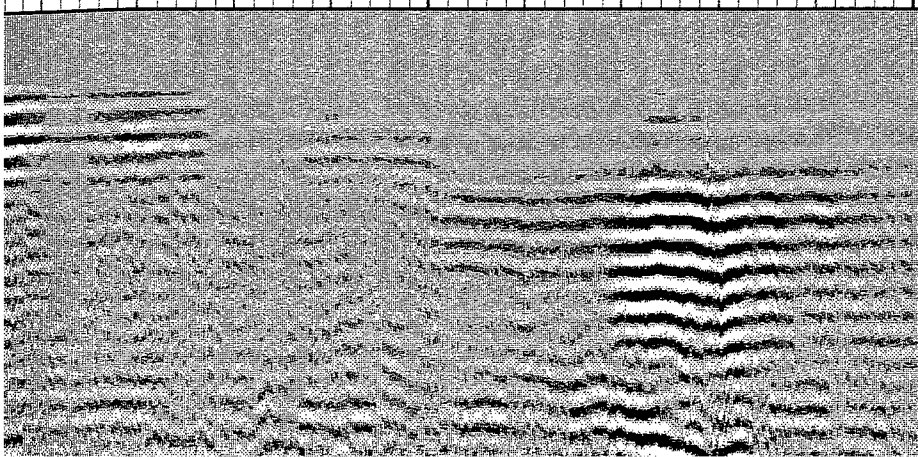
Top of Cement

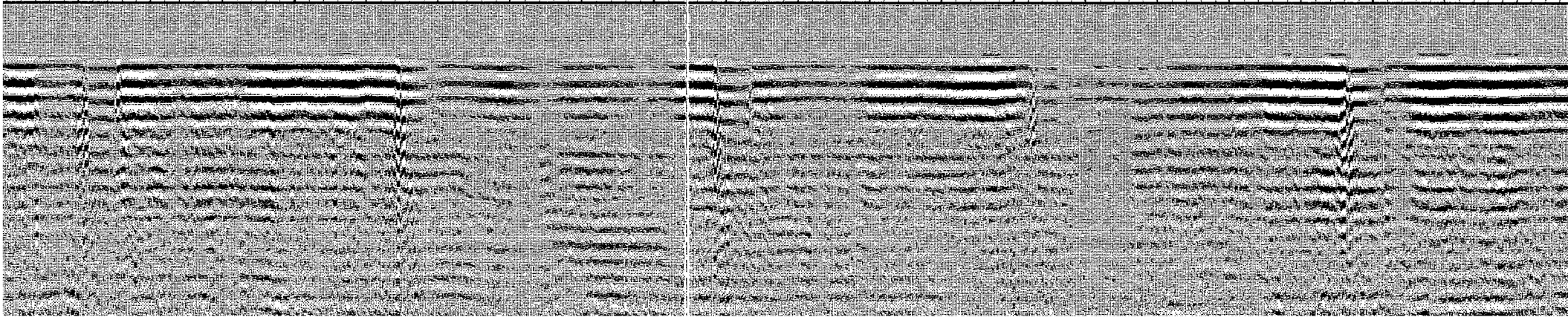
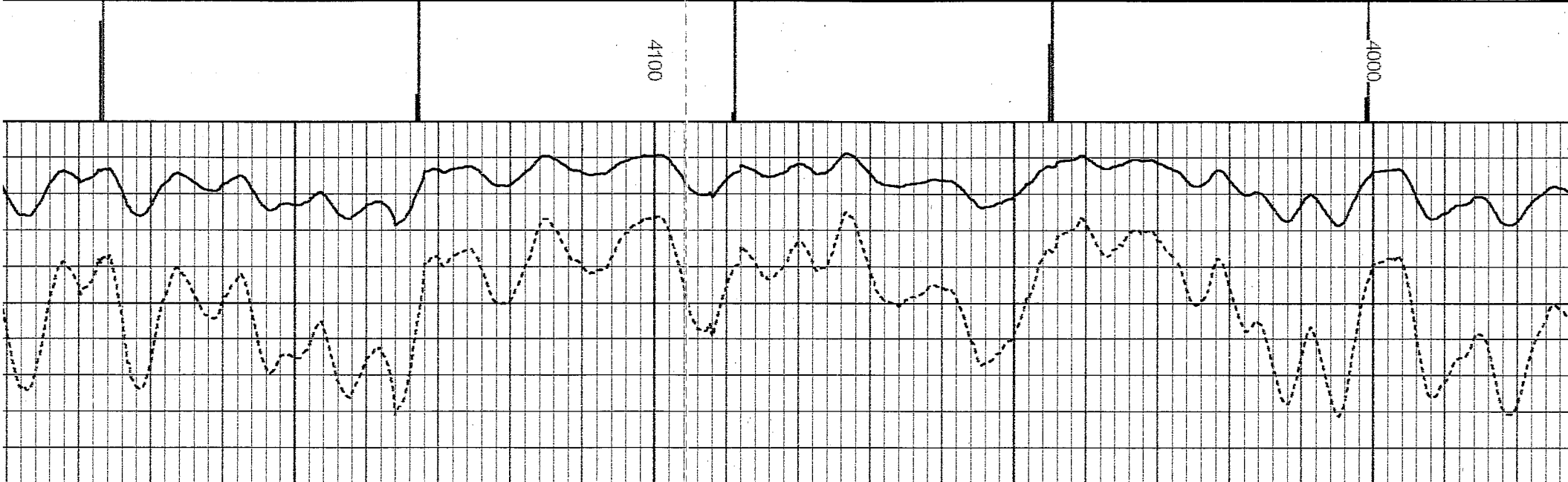
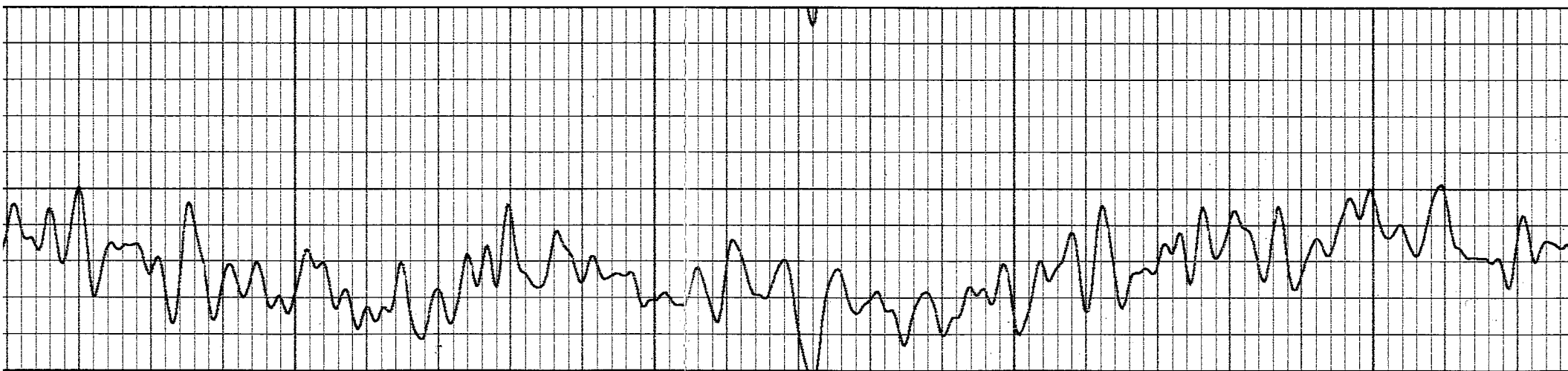


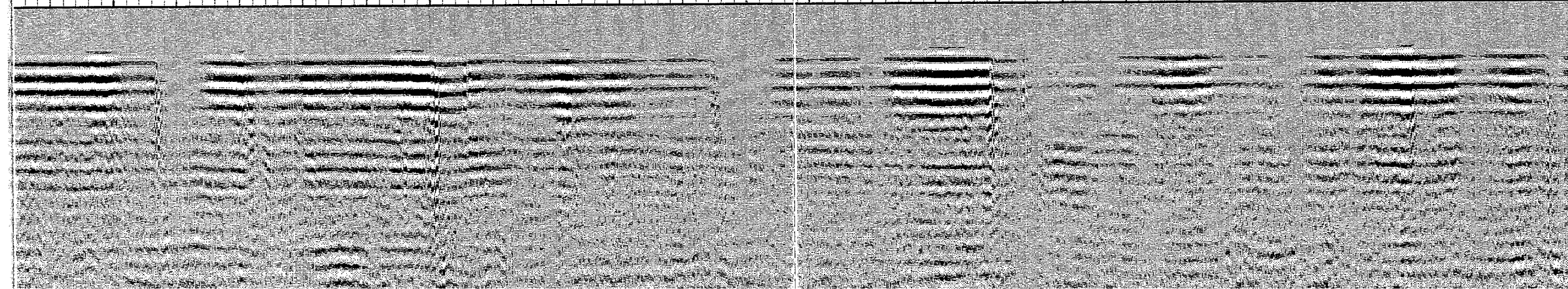
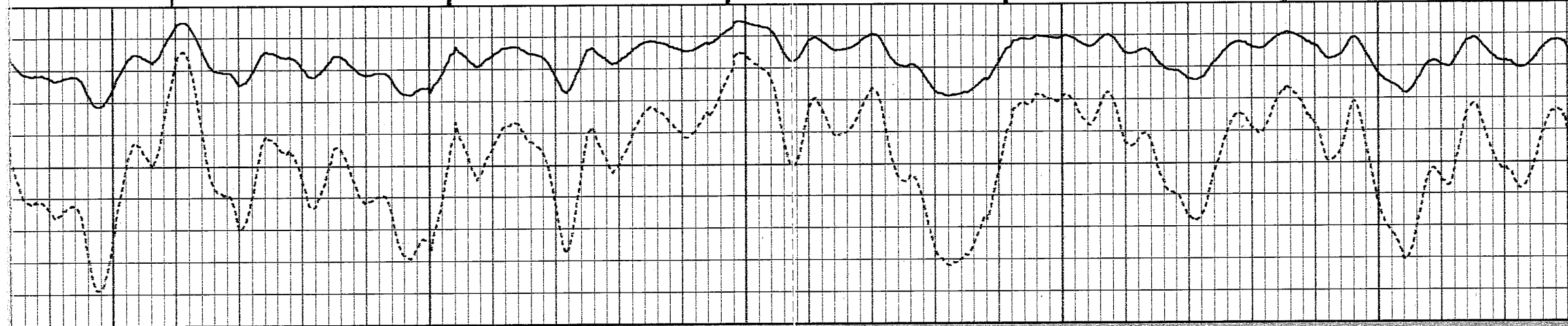
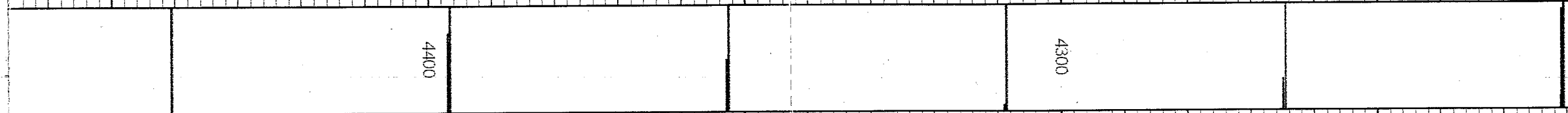
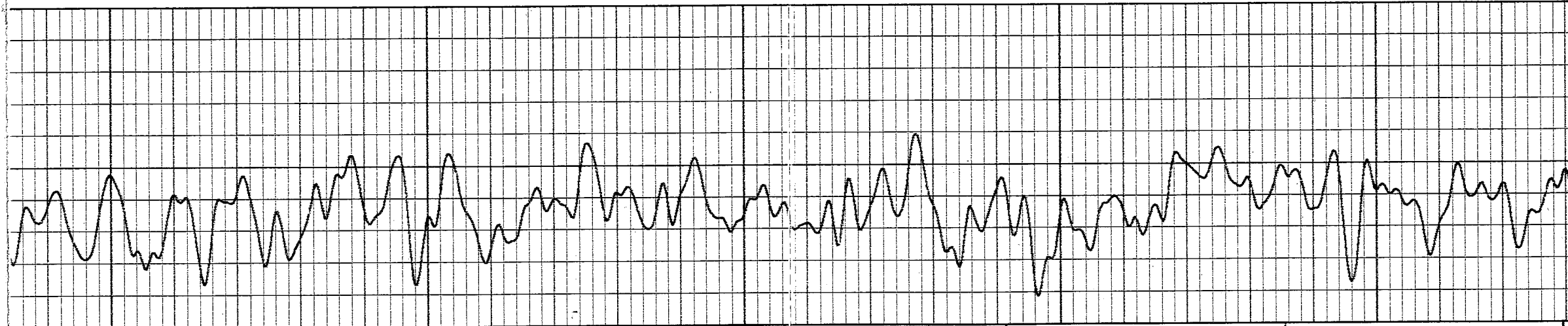
Amplified Amplitude

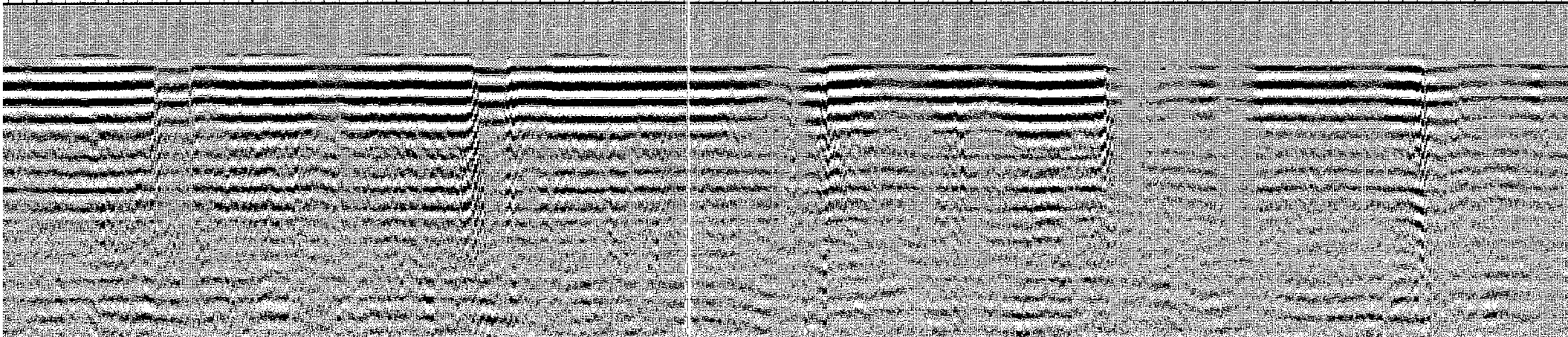
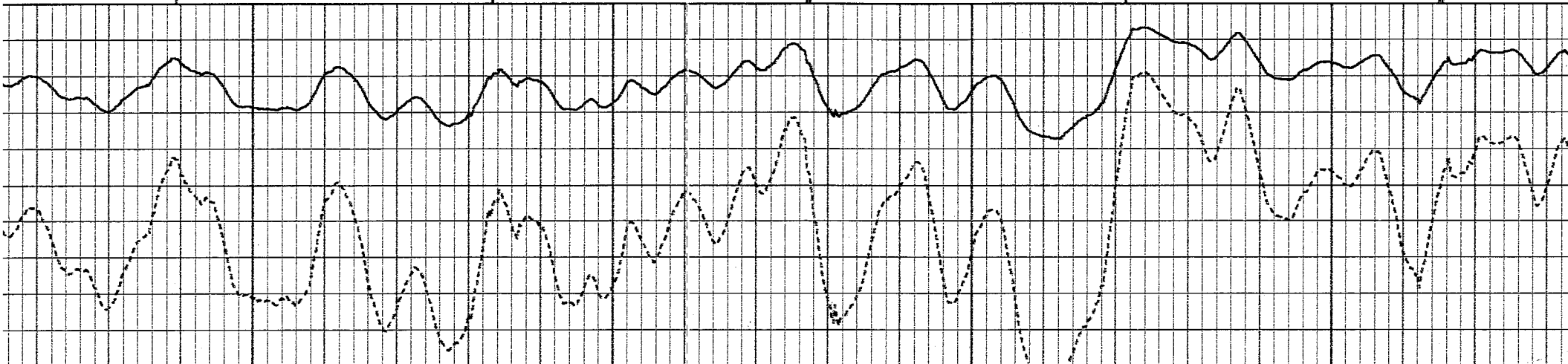
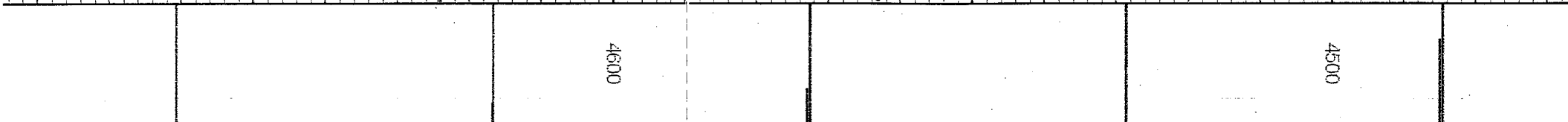
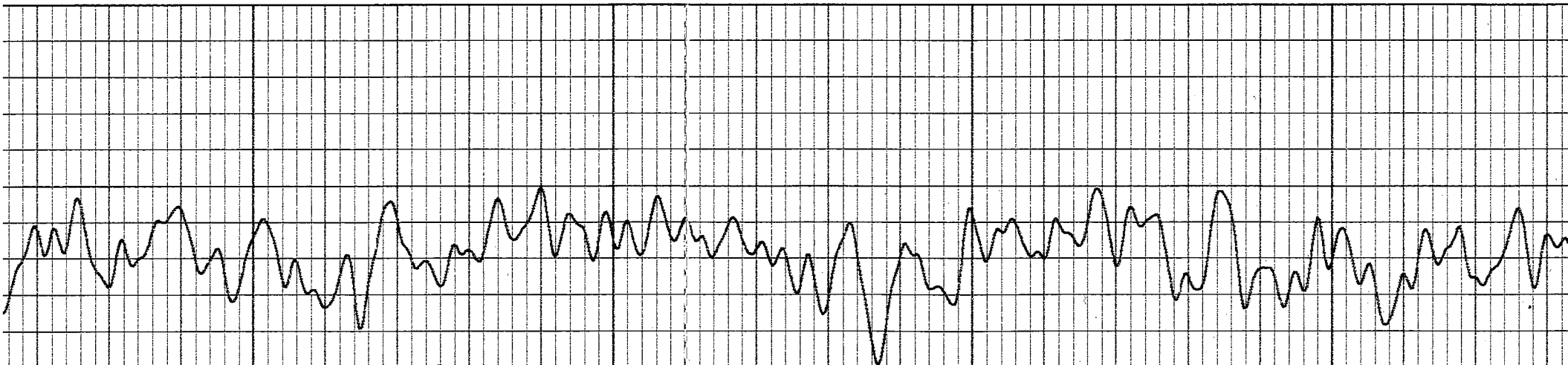
3 Amplitude

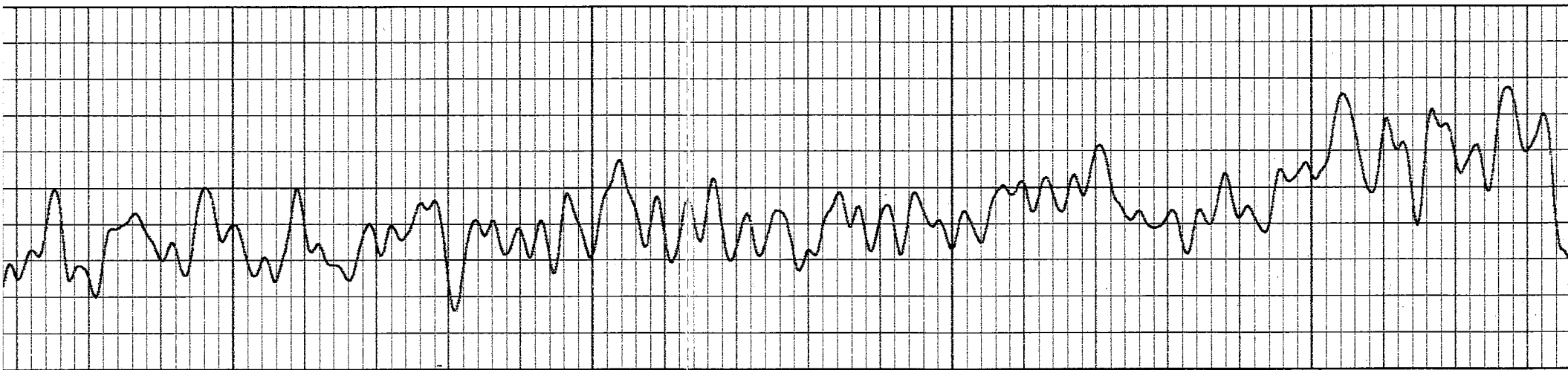
Variable Density





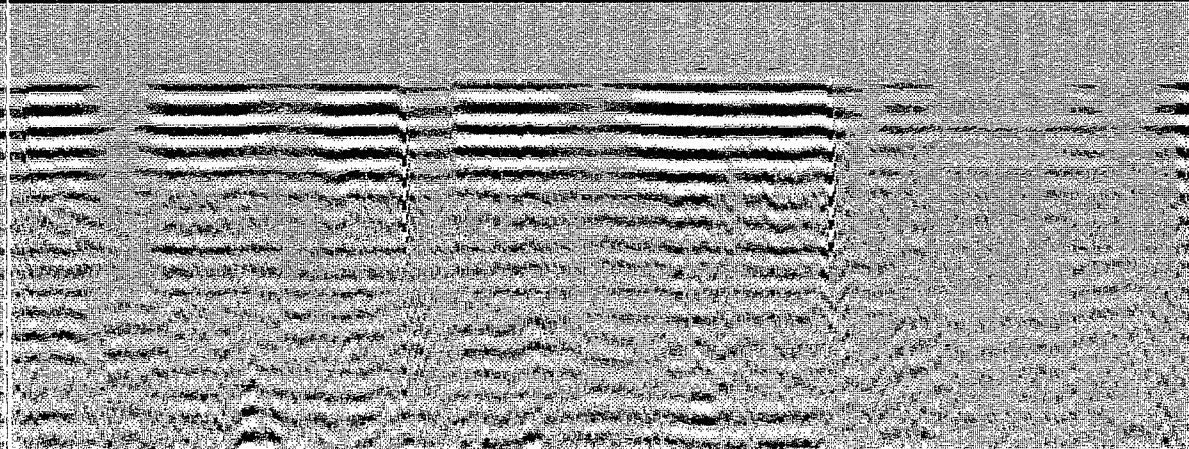
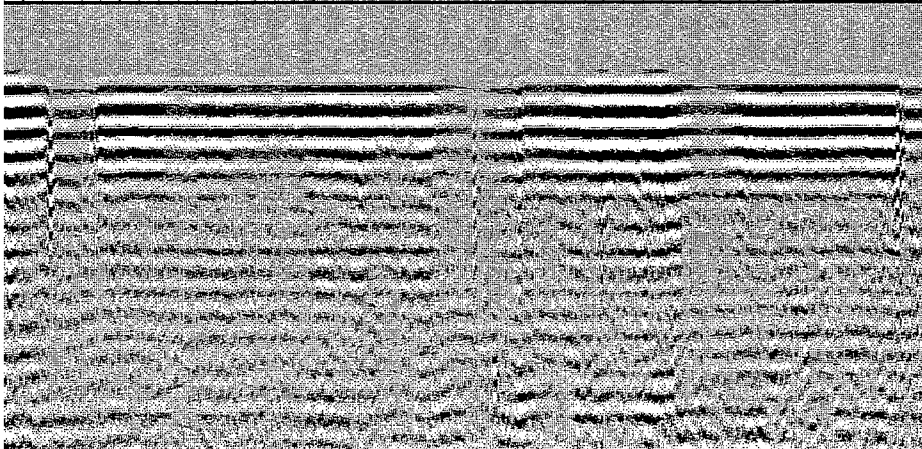
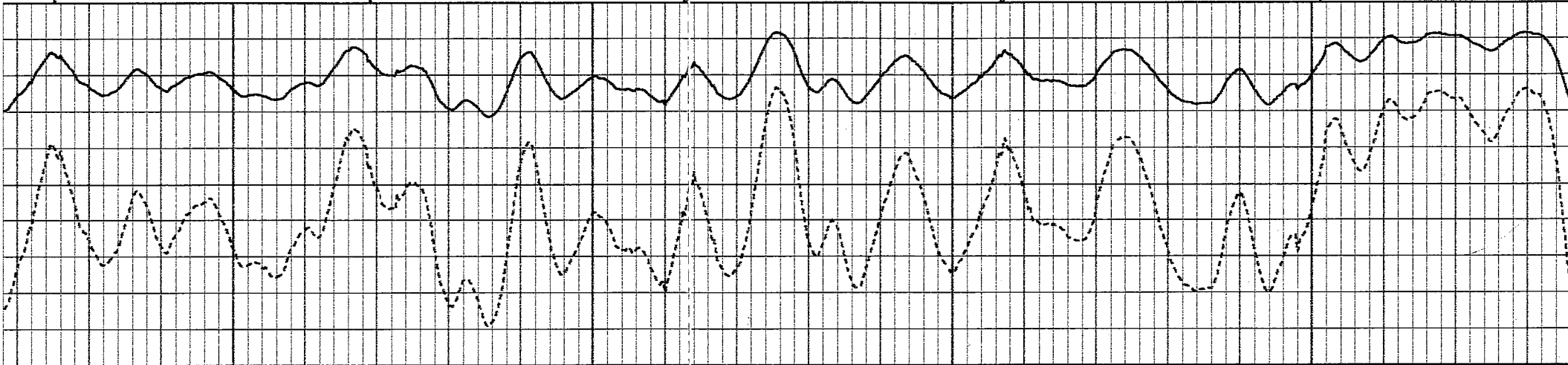


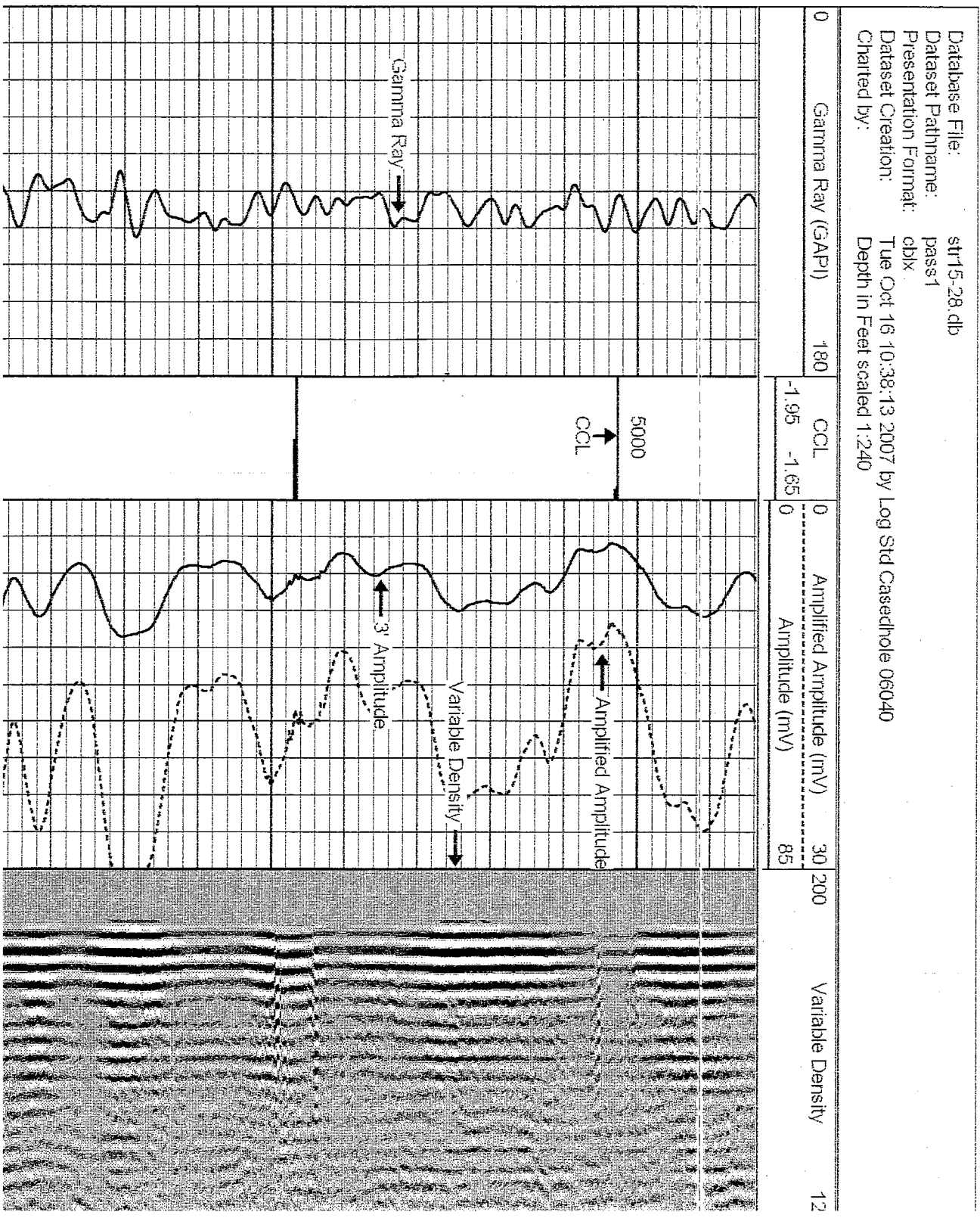
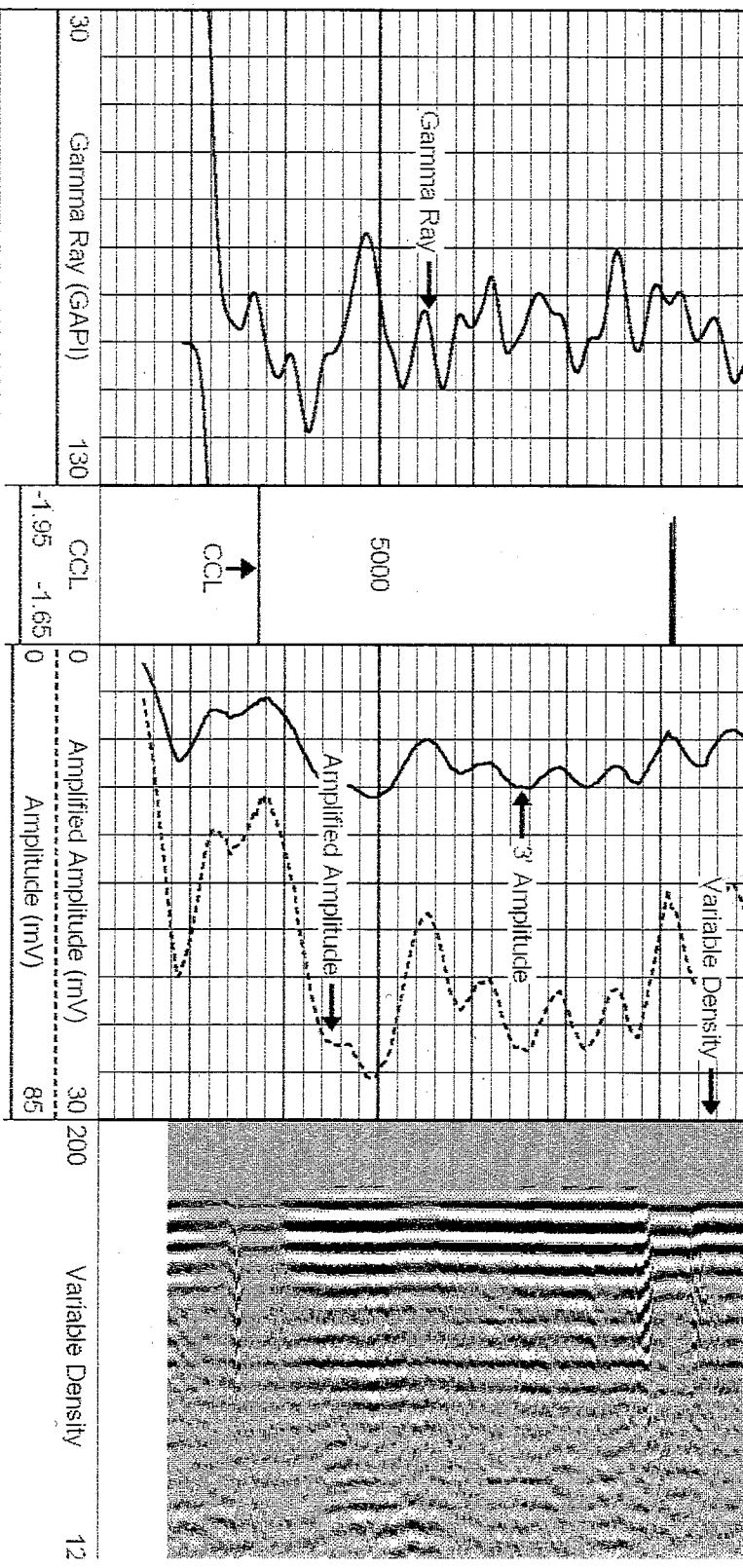


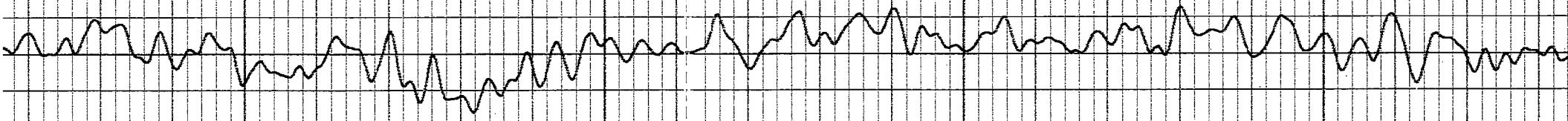


4900

4800

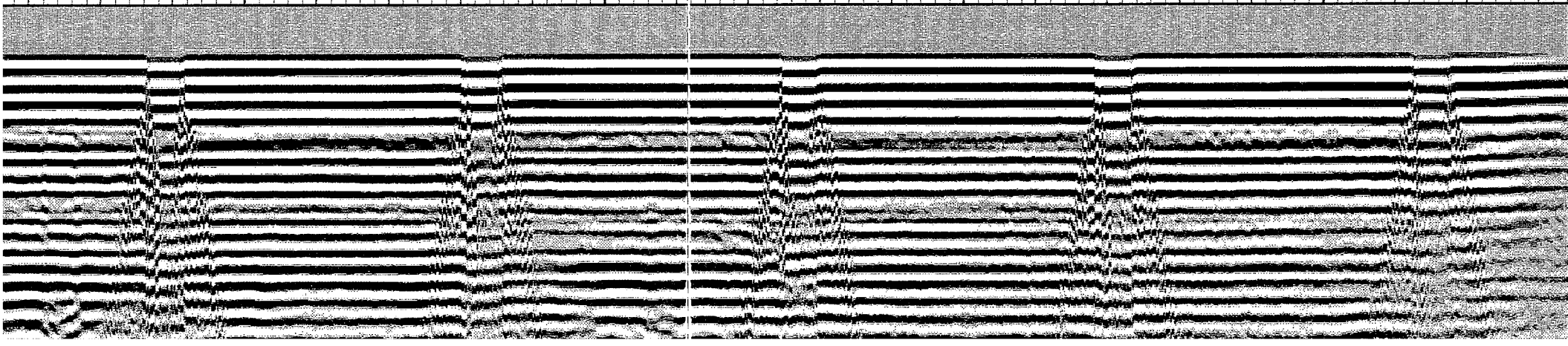
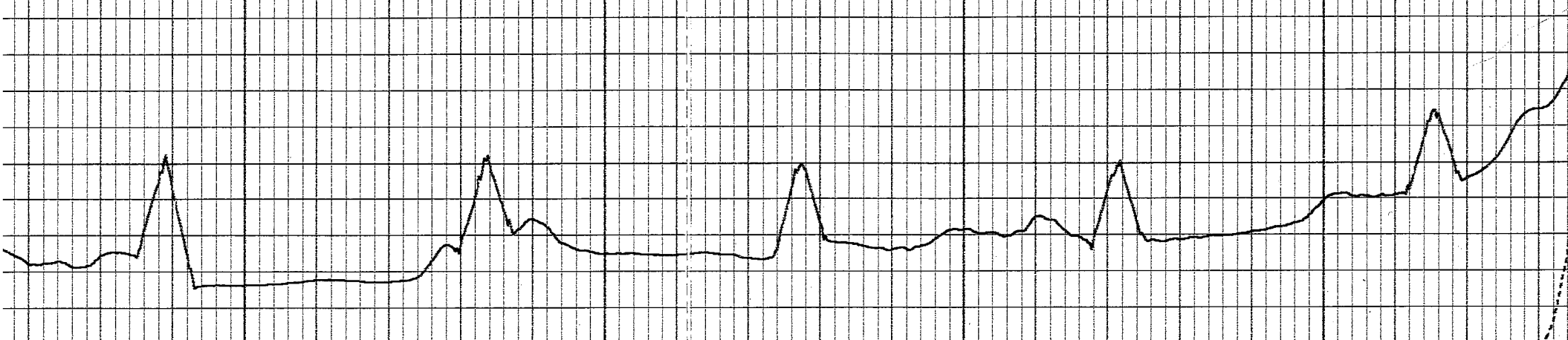


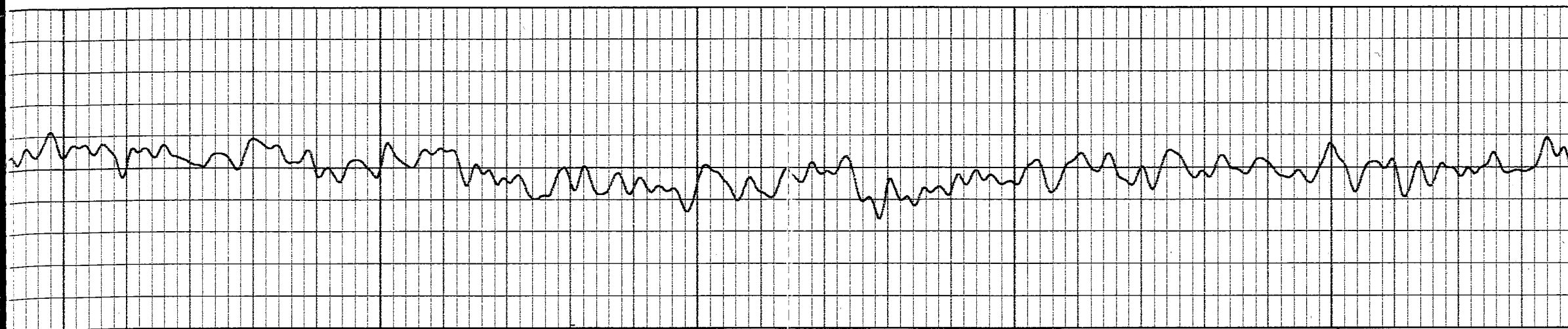




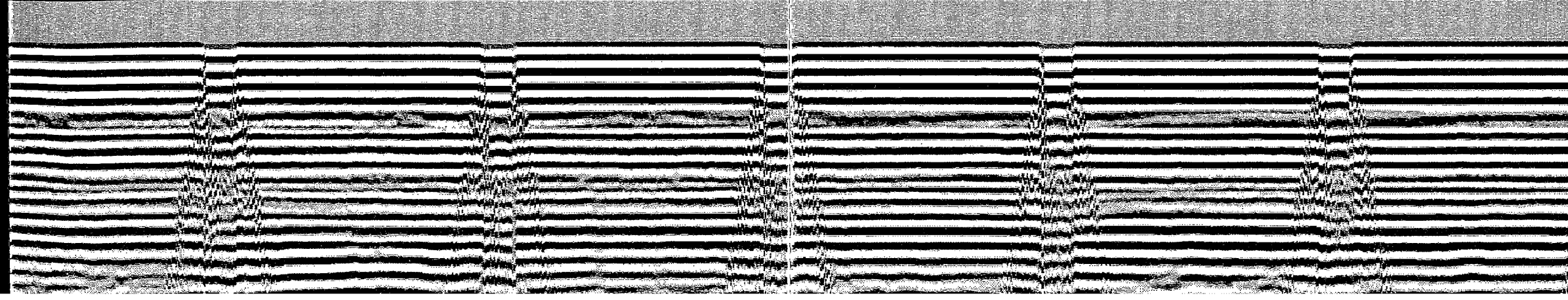
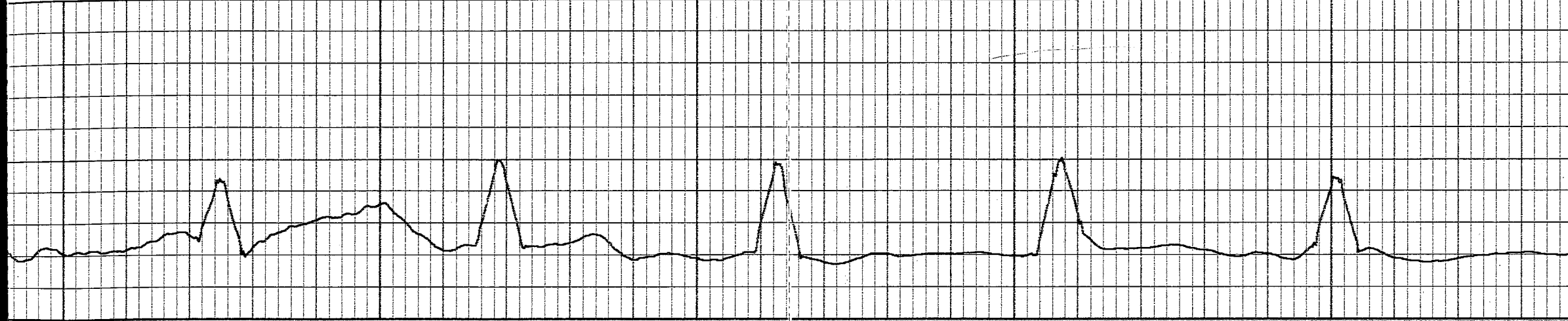
5300

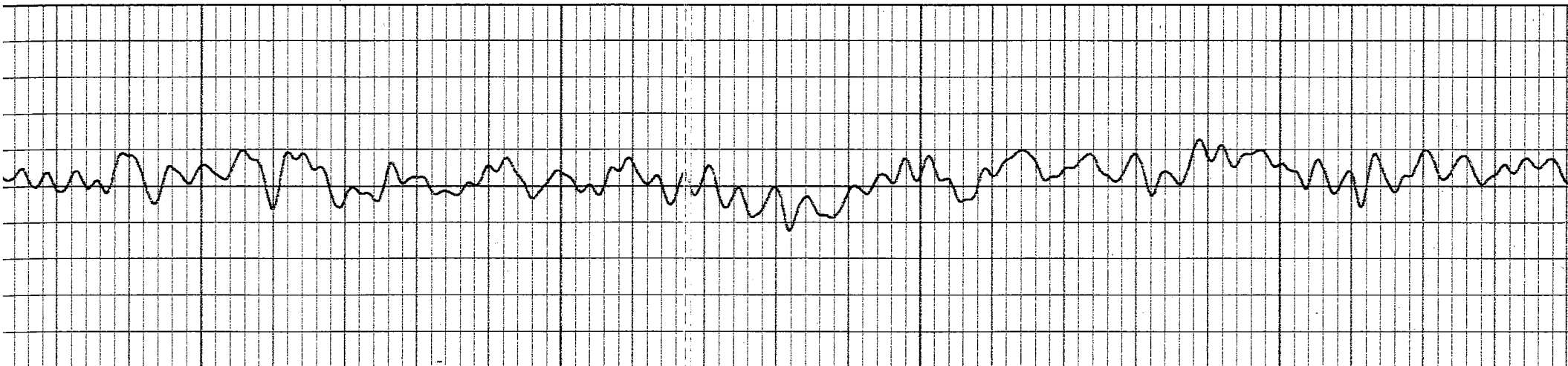
5200





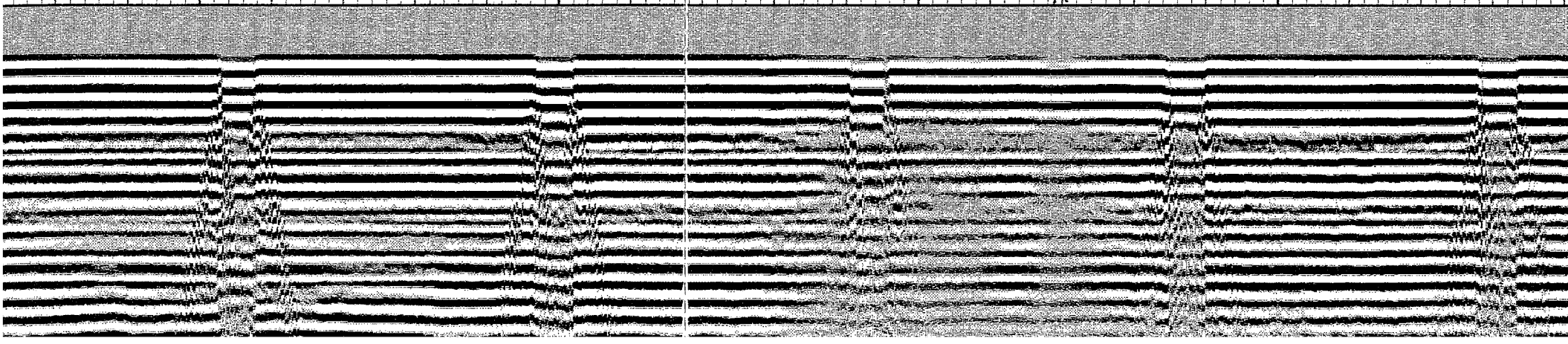
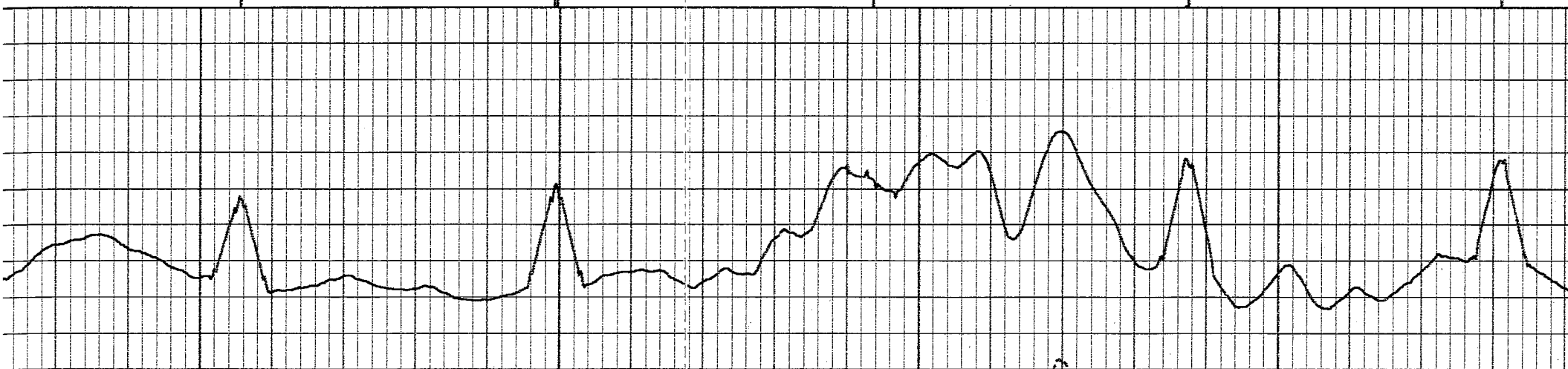
5600		5500		5400	
------	--	------	--	------	--

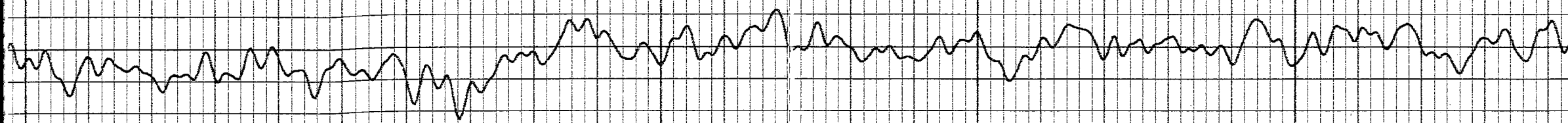




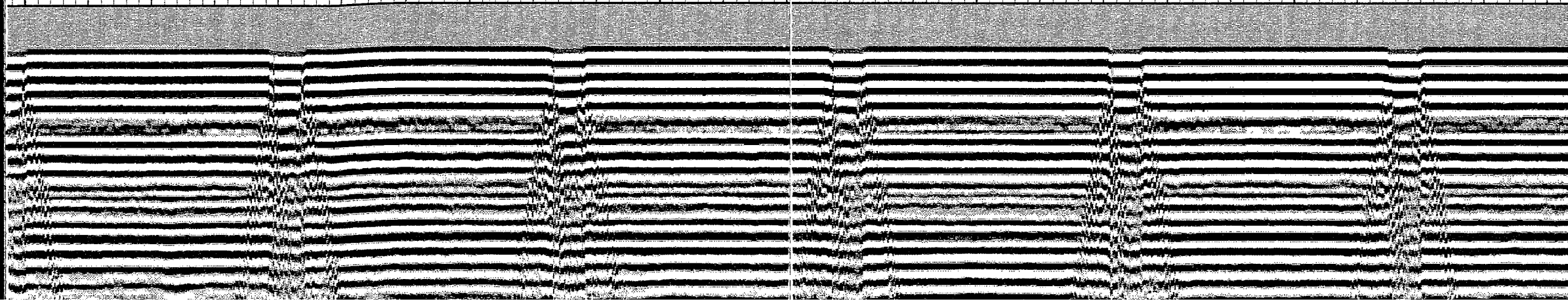
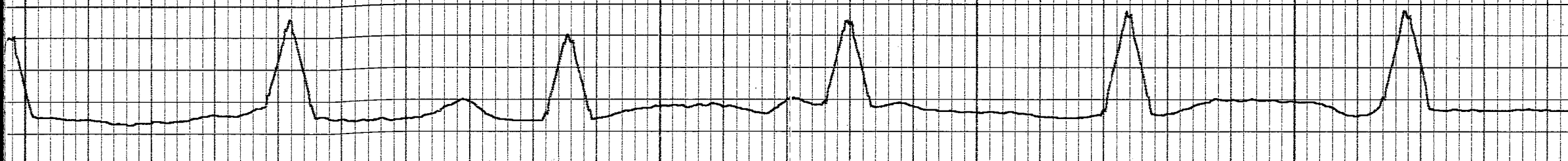
5800

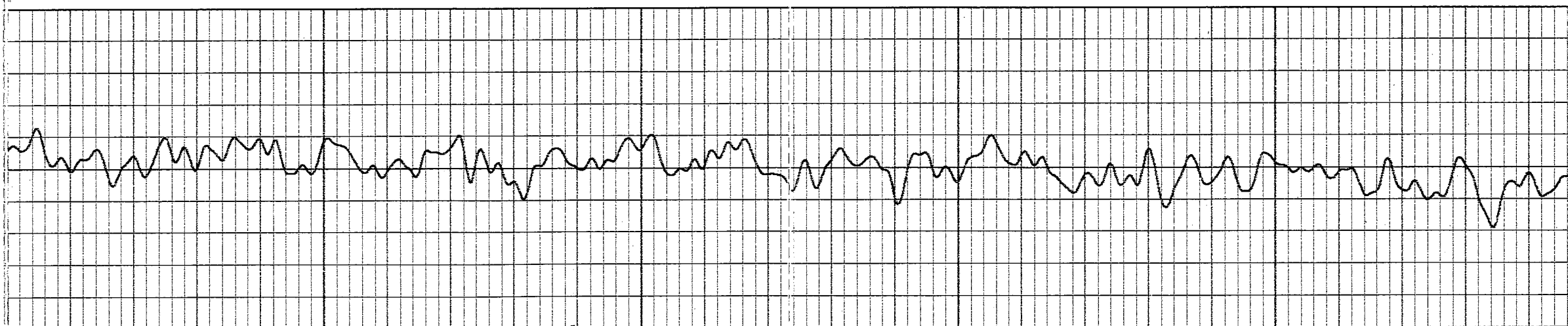
5700



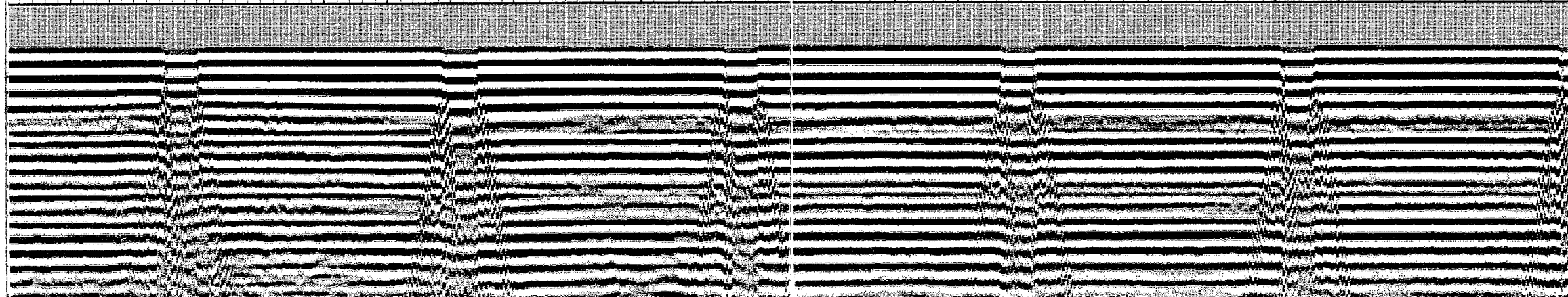
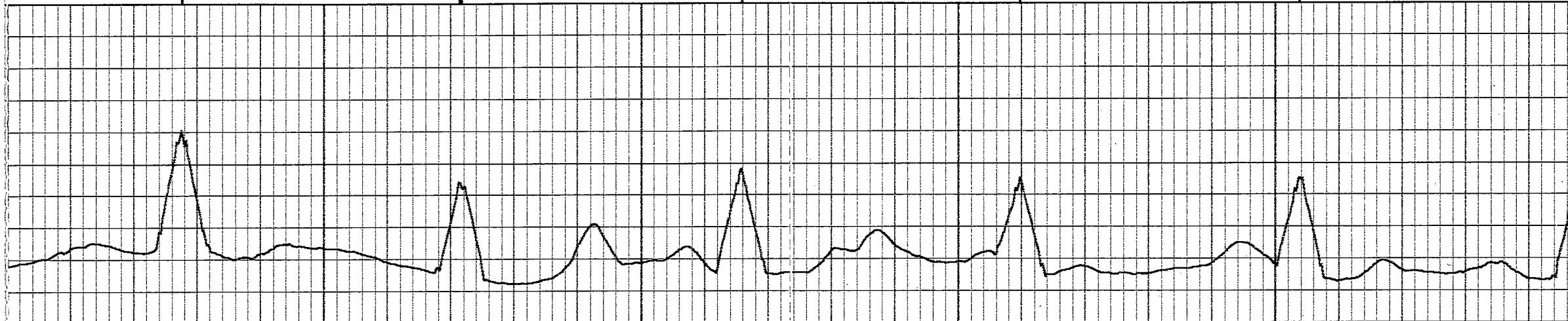


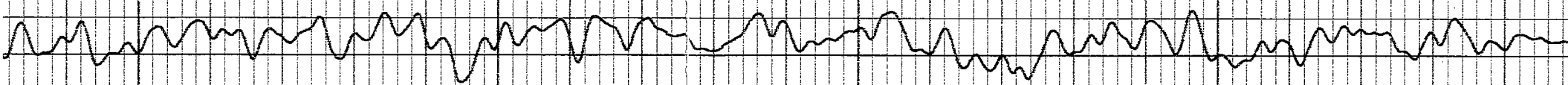
6100		6000			5900	
------	--	------	--	--	------	--





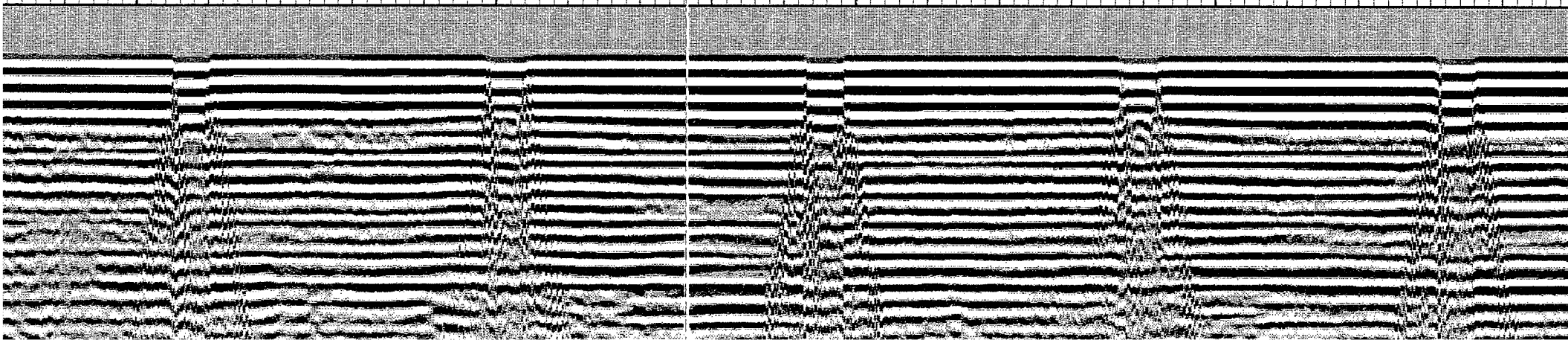
	6300			6200		
--	------	--	--	------	--	--

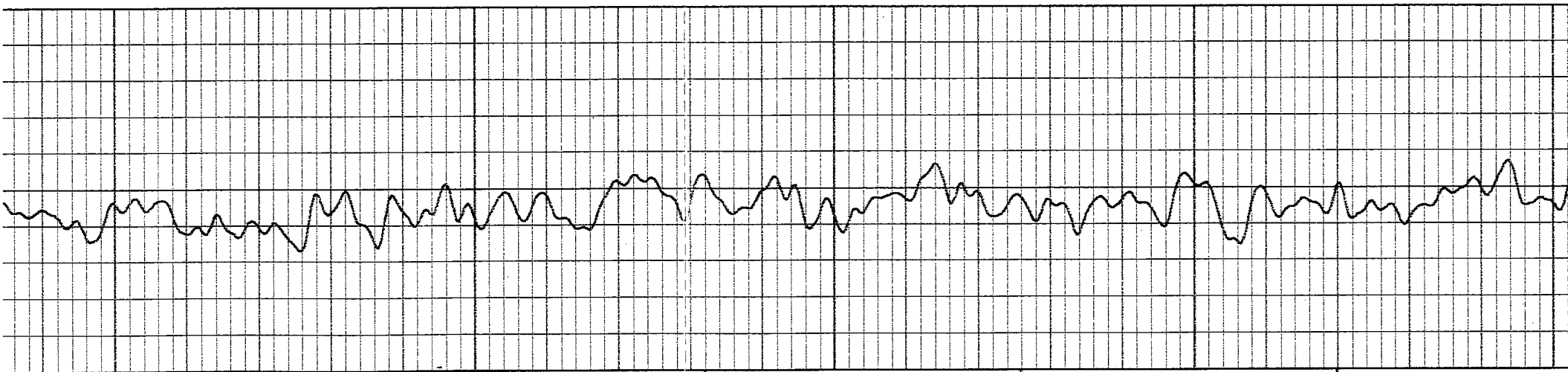




6500

6400

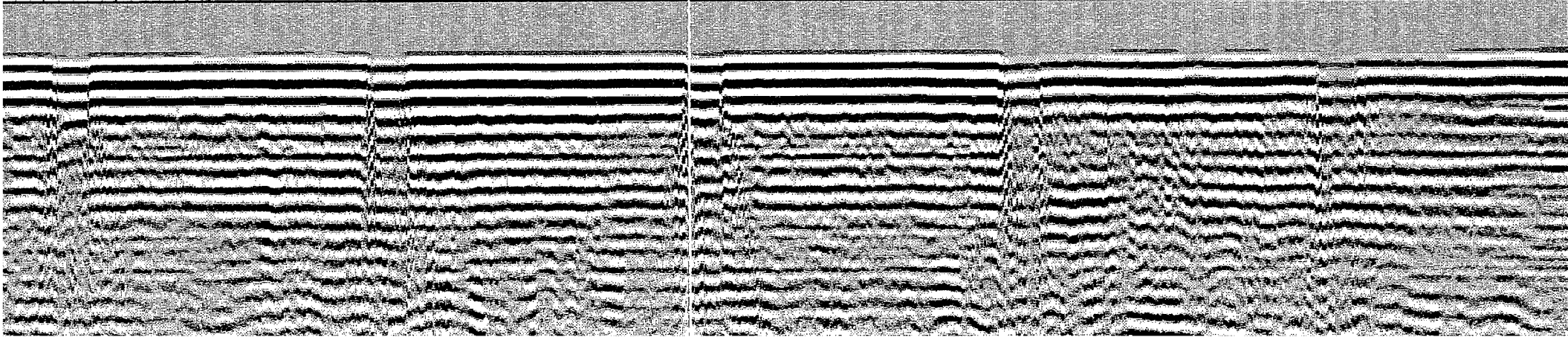
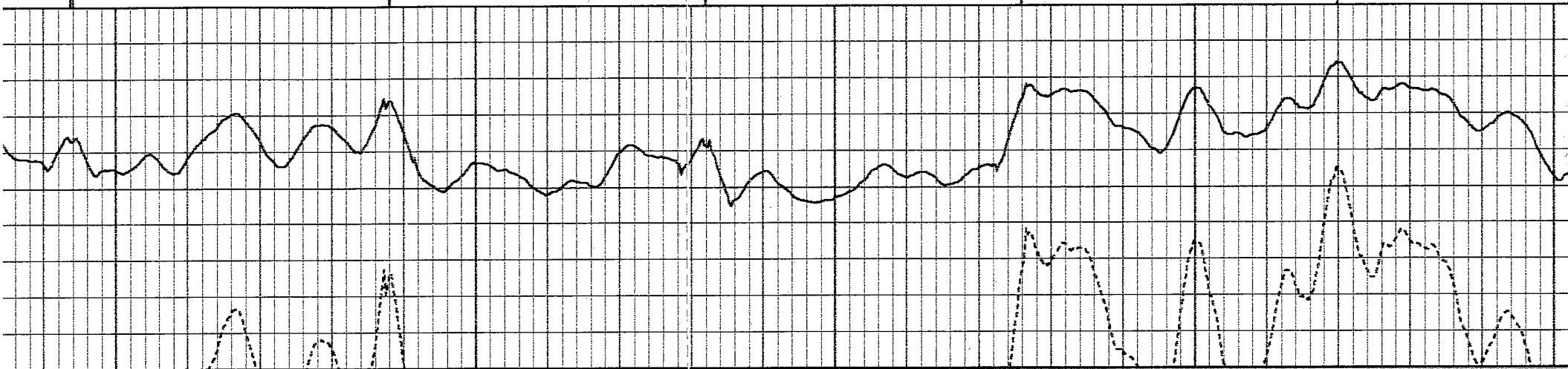


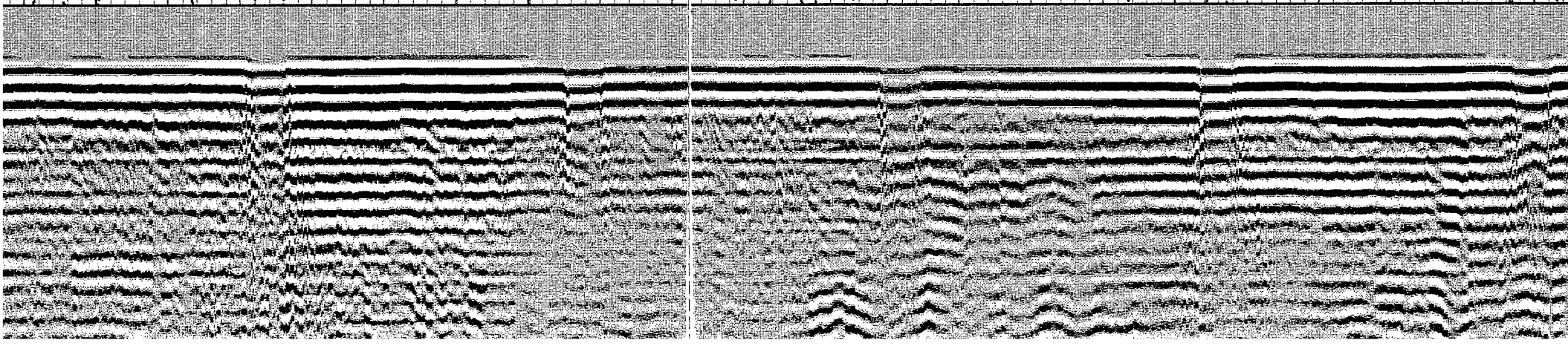
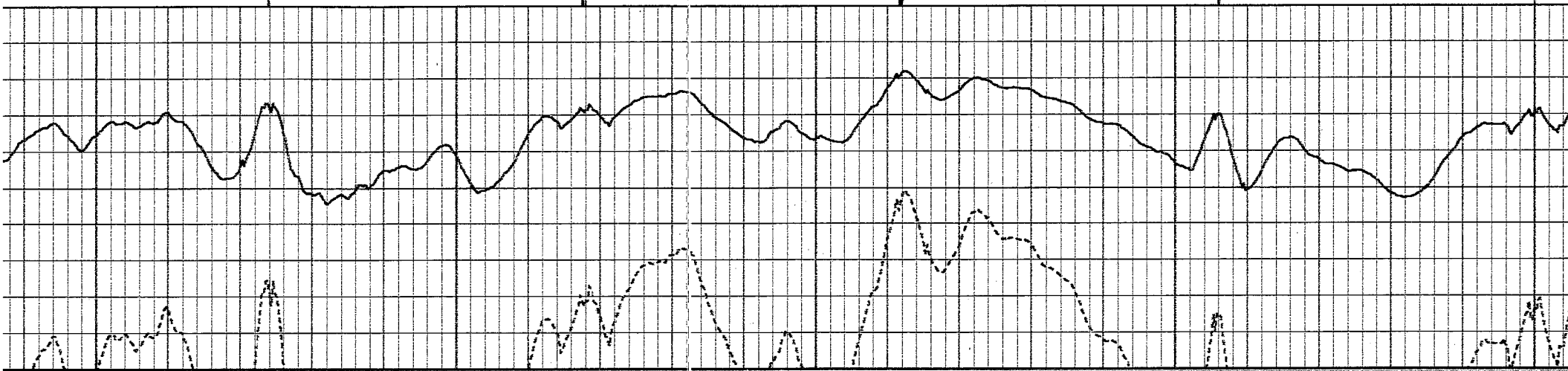
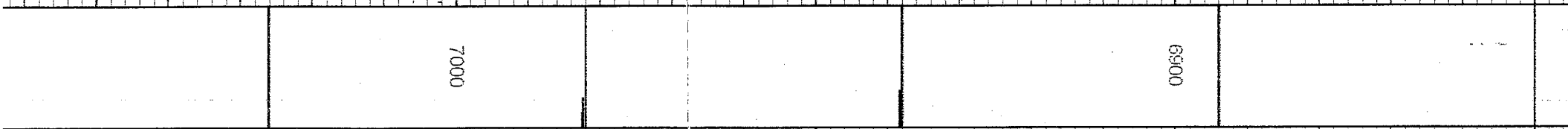
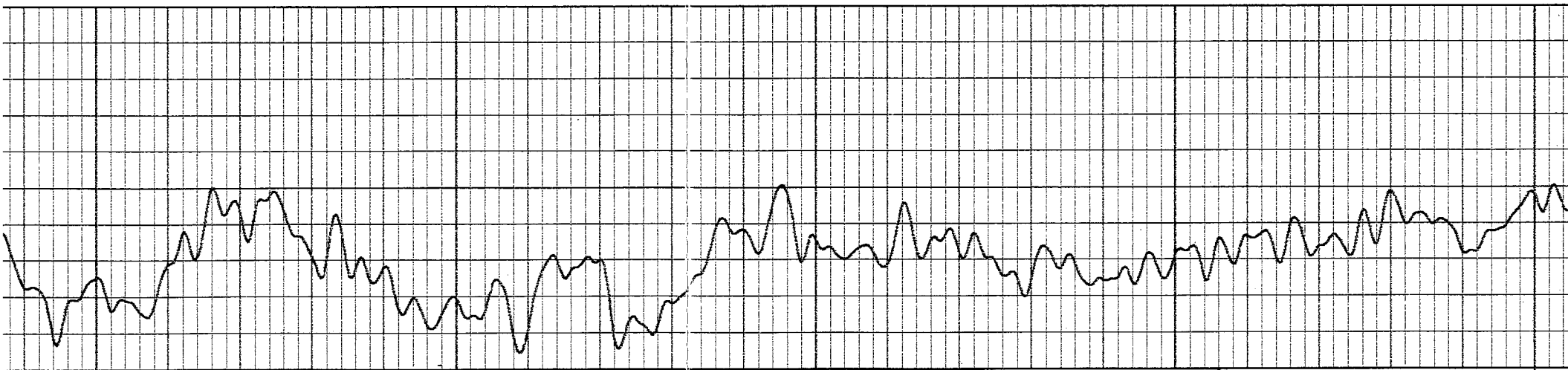


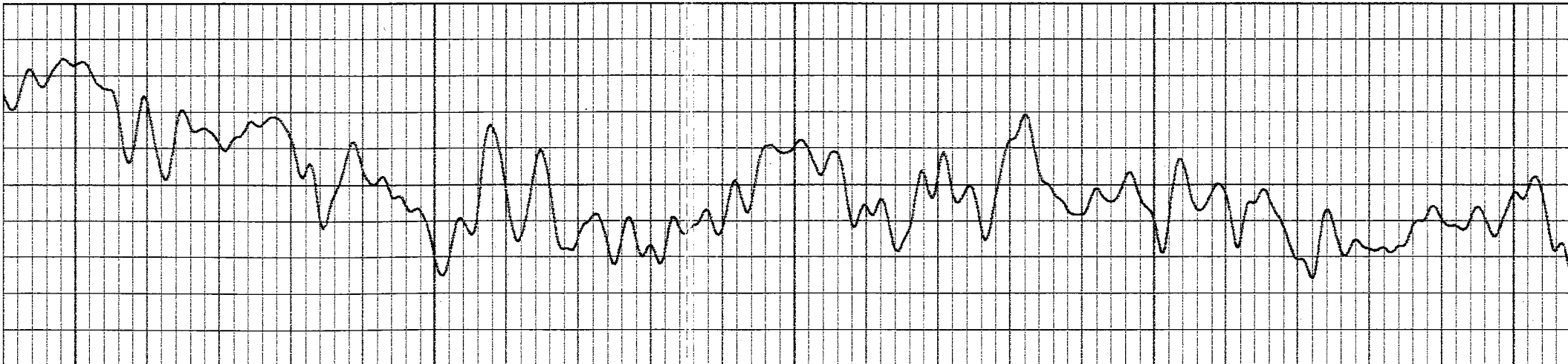
6800

6700

6600







7300		Flag Joint	7200			7100
------	--	------------	------	--	--	------

