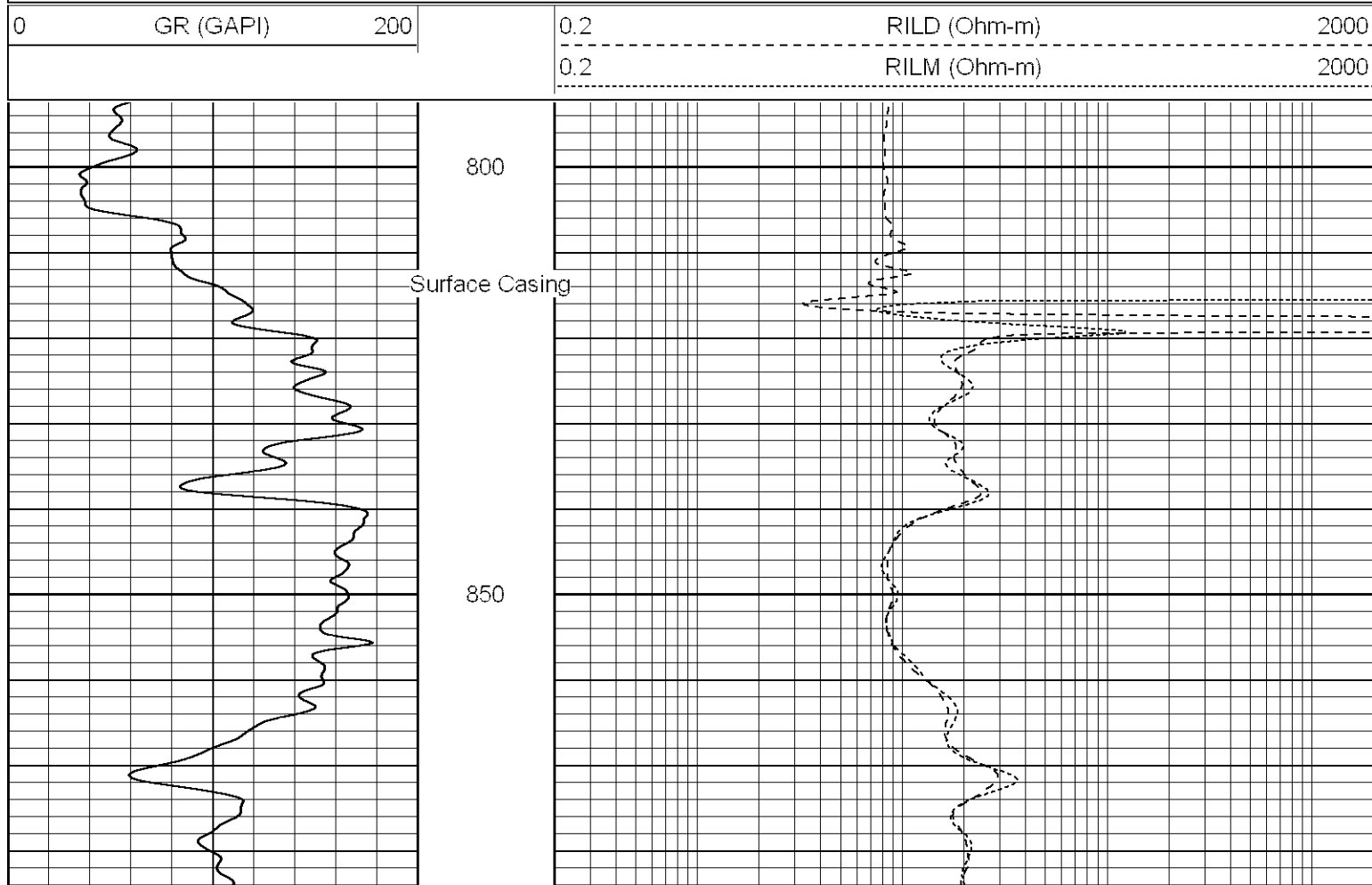
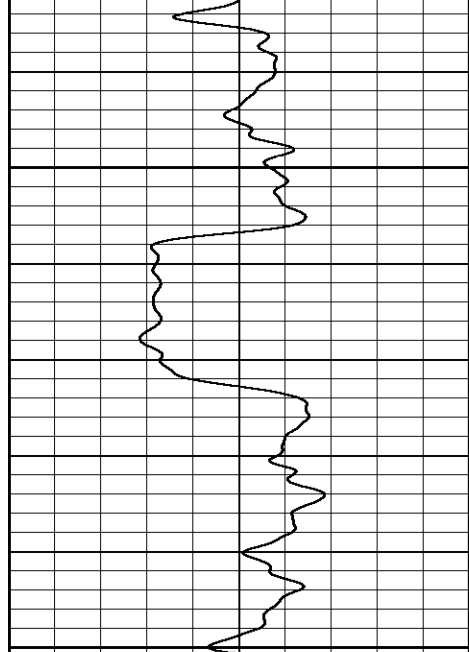


# Patterson

Company		XTO Energy Inc.
Well		Hill Ranch 36-04
Field		Purgatoire River
County		Las Animas
State		Colorado
Location:		1218'
SEC		36
T		
Permanent Datum		(
Log Measured From		(
Drilling Measured From		(
Run Number		One
Depth Driller		250C
Depth Logger		249C
Bottom Logged Interval		248E
Top Log Interval		Surface C
Casing Driller		8 5/8" @
Casing Logger		814
Bit Size		7 7/8
Type Fluid in Hole		Water
Density / Viscosity		///
pH / Fluid Loss		///
Source of Sample		///
Rm @ Meas. Temp		///
Rmf @ Meas. Temp		///
Rmc @ Meas. Temp		///
Source of Rmf / Rmc		///
Rm @ BHT		///
Time Circulation Stopped		3:30 a.
Time Logger on Bottom		5:50 a.
Maximum Recorded Temperature		114
Equipment Number		T67,
Location		Trinidad
Recorded By		L. Smi
Witnessed By		Mr. Don Jo

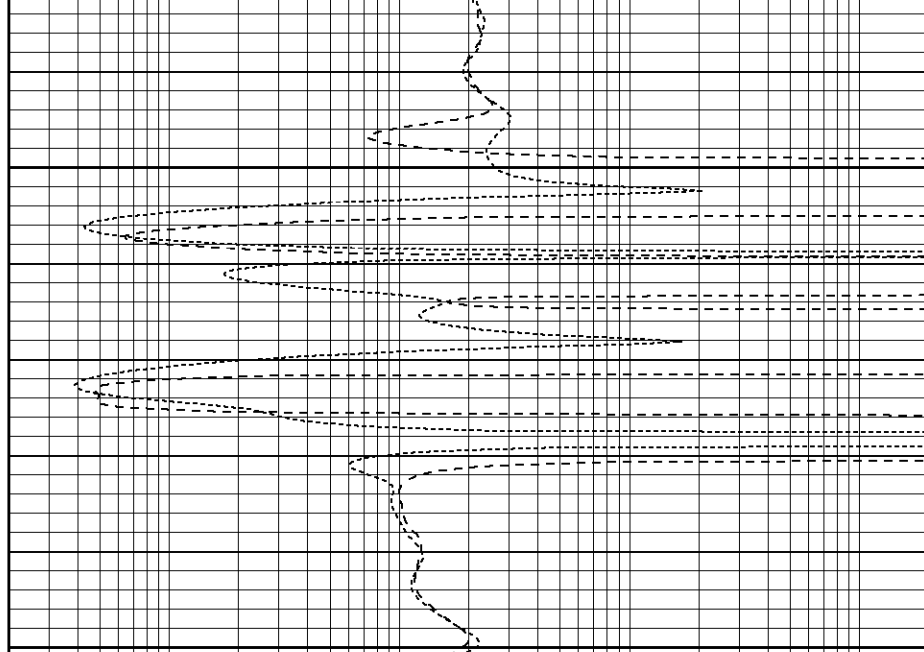
Database File: xtohr3604.db  
Dataset Pathname: pass2.1  
Presentation Format: dil2  
Dataset Creation: Sat Sep 02 07:19:57 2006 by Calc Warrior 7.0 STD Ope  
Charted by: Depth in Feet scaled 1:240

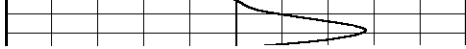


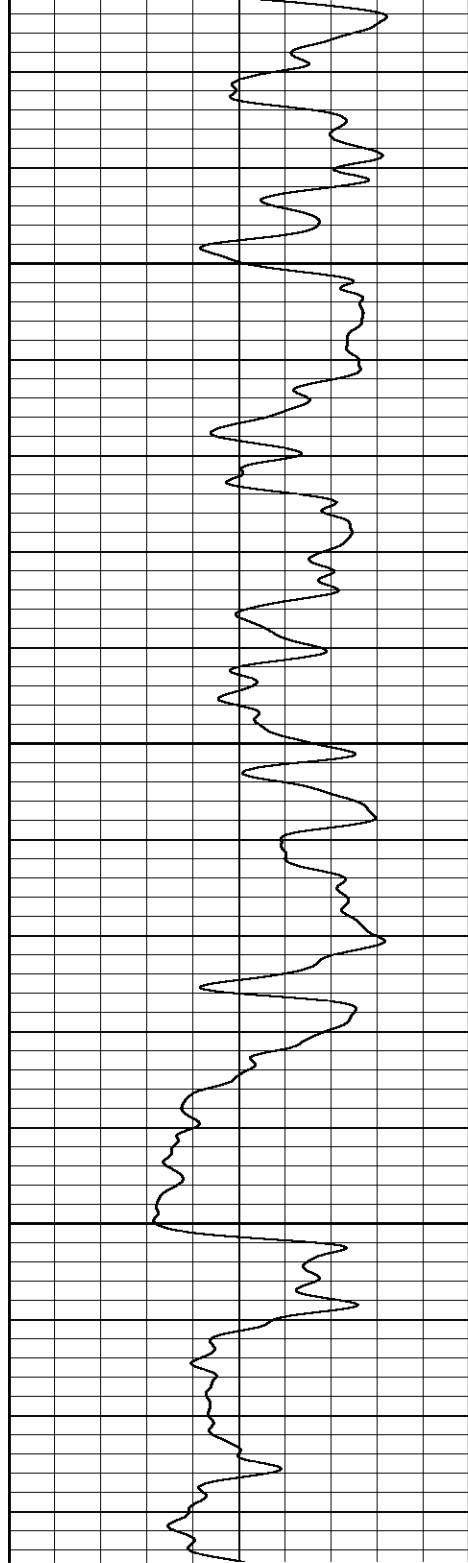


1000

1050



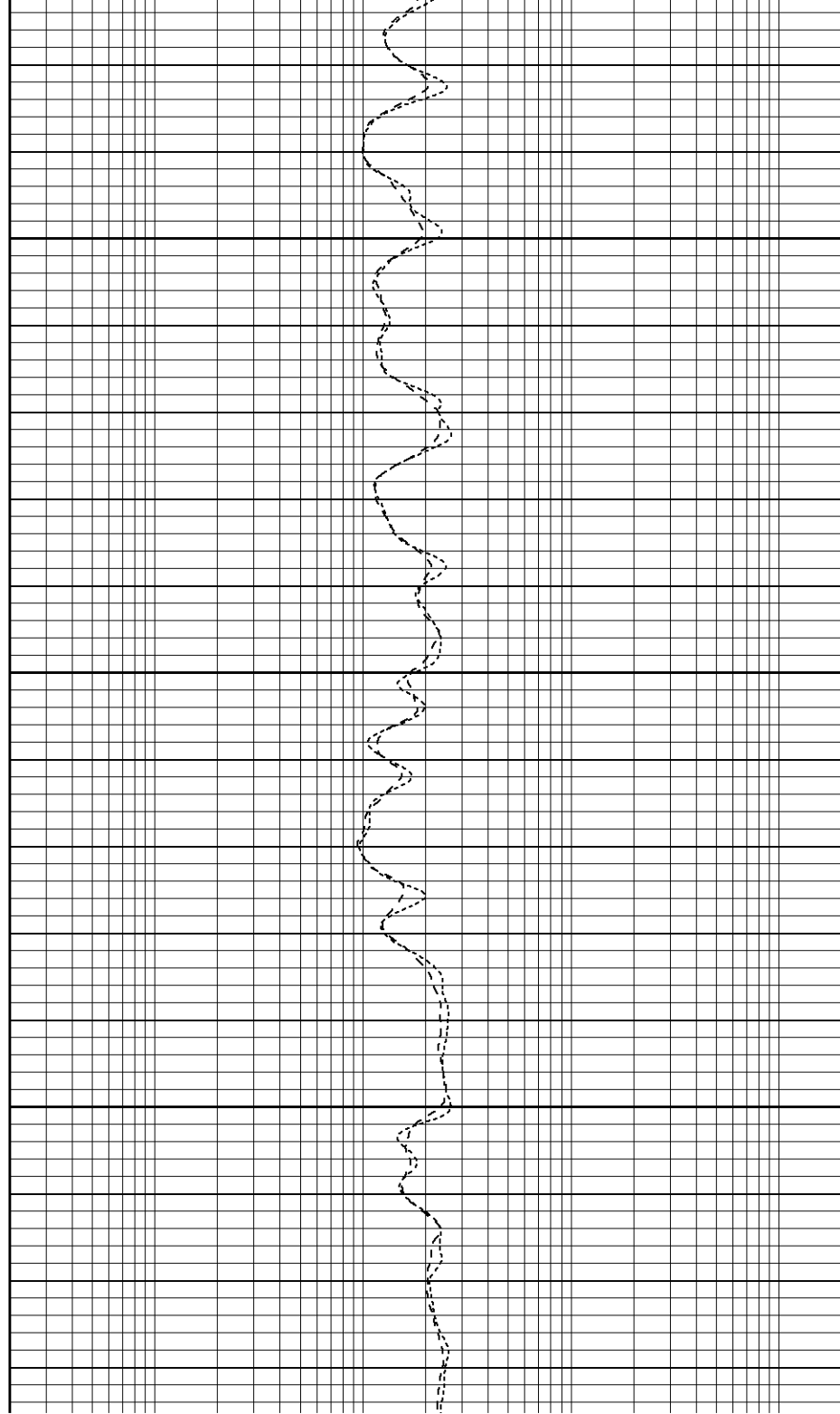




1450

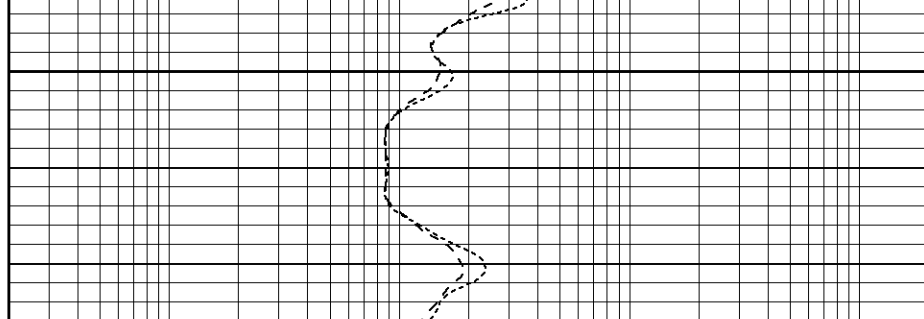
1500

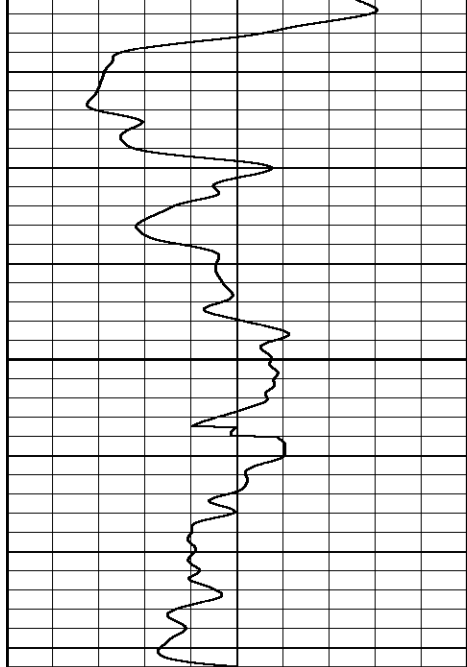
1550



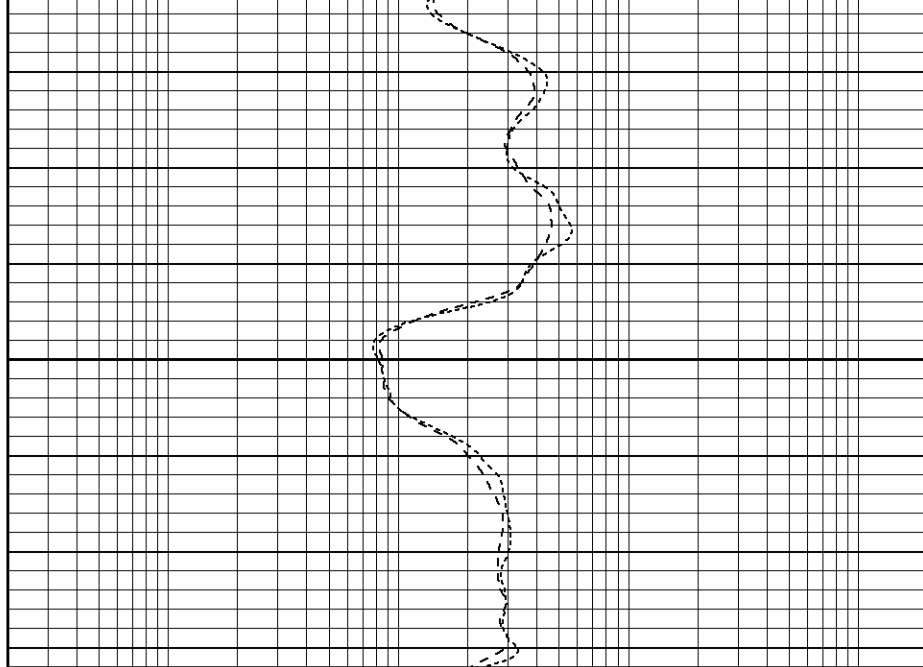


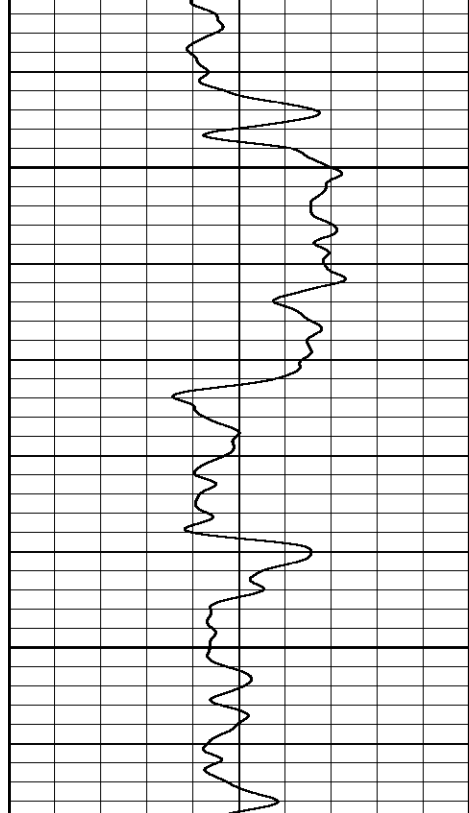
1650





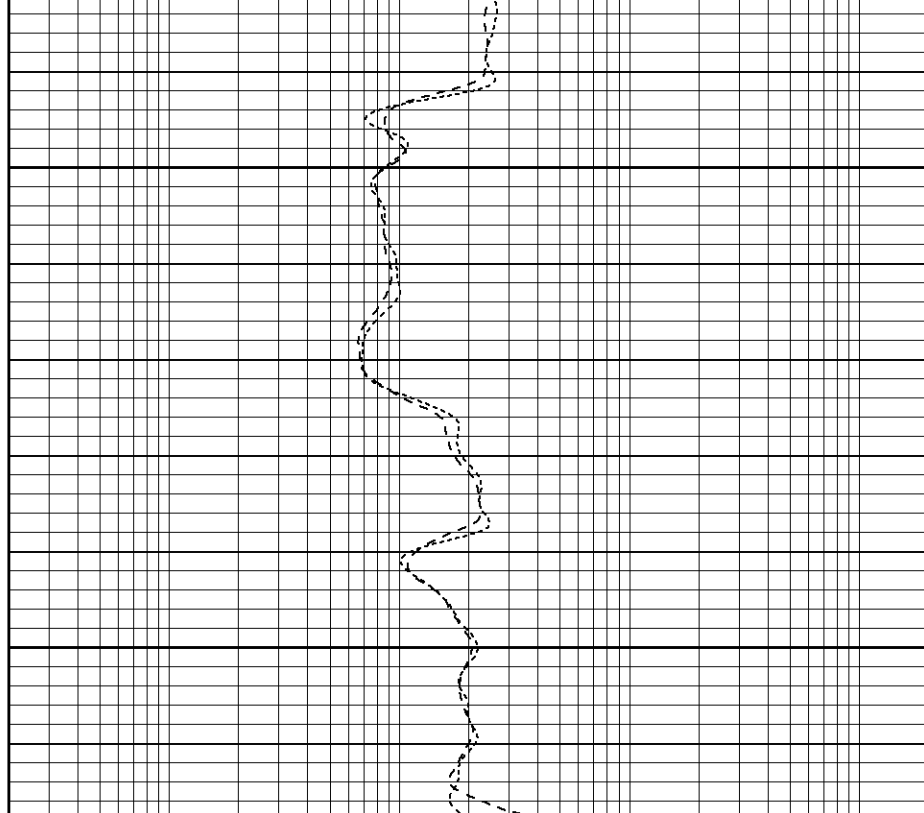
1900



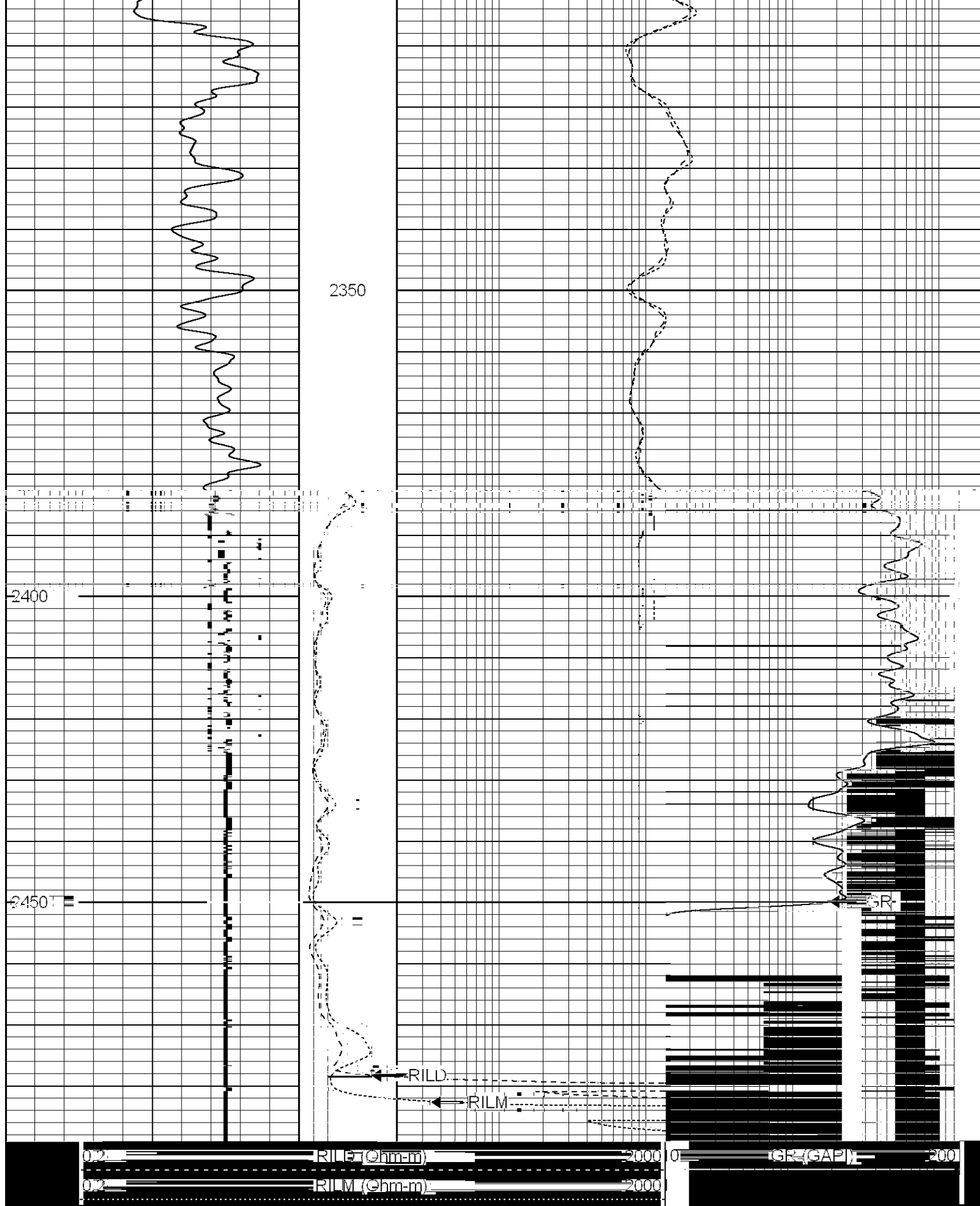


2100

2150





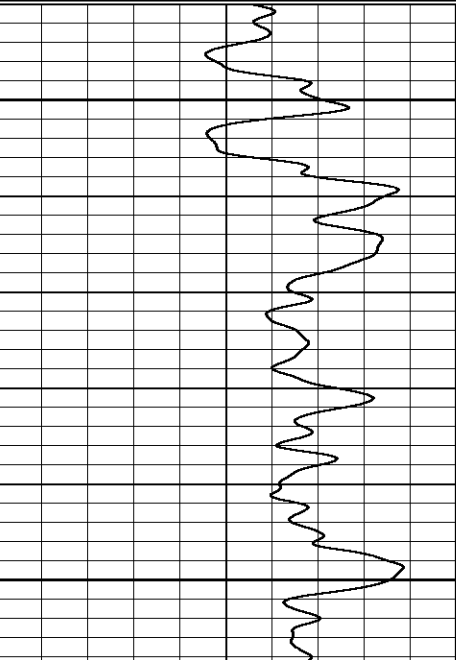


Repeat Pass

Patterson

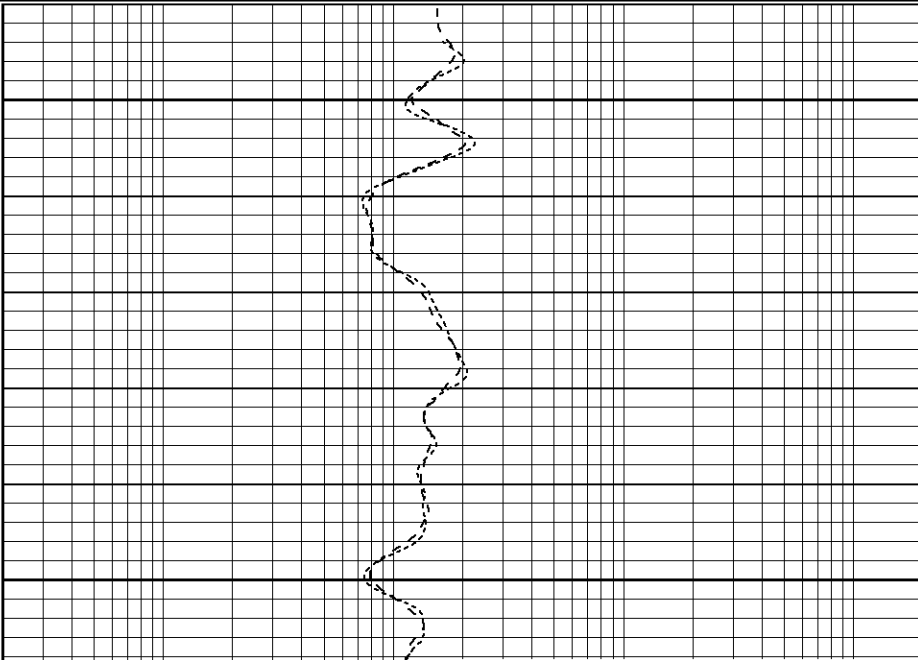
Database File: xtohr3604.db  
Dataset Pathname: pass1.2  
Presentation Format: dil2  
Dataset Creation: Sat Sep 02 07:09:42 2006 by Calc Warrior 7.0 STD Ope  
Charted by: Depth in Feet scaled 1:240

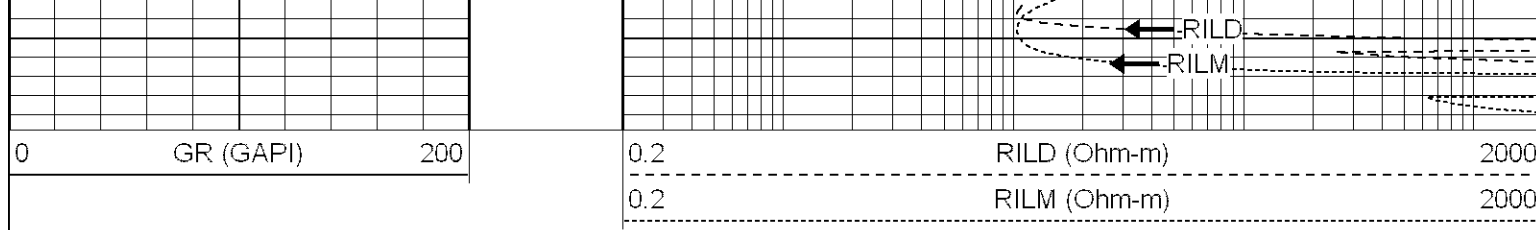
0	GR (GAPI)	200	0.2	RILD (Ohm-m)	2000
			0.2	RILM (Ohm-m)	2000



2300

2350





### Dual Induction Calibration Report

Serial-Model: 5375-G  
 Surface Cal Performed: Tue Aug 29 14:36:44 2006  
 Downhole Cal Performed: Wed Aug 30 16:26:38 2006

#### Surface Calibration

Readings				References			Results	
Loop:	Air	Loop		Air	Loop		m	b
Deep	0.007	0.625	V	0.000	500.000	mmho-m	808.360	-5.486
Medium	0.011	0.749	V	0.000	550.000	mmho-m	744.980	-7.825
Internal:	Zero	Cal		Zero	Cal		m	b
Deep	0.007	0.625	V	0.000	500.000	mmho-m	808.488	-5.660
Medium	0.010	0.748	V	0.000	550.000	mmho-m	744.937	-7.570

#### Downhole Calibration

Readings				References			Results	
Internal:	Zero	Cal		Zero	Cal		m	b
Deep	0.217	498.880	mmho-m	0.173	500.094	mmho-m	1.003	-0.045
Medium	0.005	548.877	mmho-m	-0.255	549.777	mmho-m	1.002	-0.259
Shallow	2.509	0.018	V	500.000	2.000	Ohm-m	149.893	-4.800

### Compensated Density Calibration Report

Serial-Model: 902-2.75POH  
 Source / Verifier: /  
 Master Calibration Performed: Tue Aug 29 13:50:50 2006

#### Master Calibration

Density			Far Detector	Near Detector	
Magnesium	1.710	g/cc	1017.78	494.16	cps
Aluminum	2.590	g/cc	182.34	245.43	cps
Spine Angle = 67.85			Density/Spine Ratio = 0.474		
Size			Reading		
Small Ring	8.10	in	1.84	V	
Large Ring	17.00	in	4.32	V	

### Neutron Calibration Report

Serial Number: 802  
 Tool Model: 2.75POH  
 Performed: Thu Aug 24 12:48:24 2006

Calibrator Value:	1	NAPI
Calibrator Reading:	1	cps
Sensitivity:	1	NAPI/cps

# Gamma Ray Calibration Report

Serial Number:	804
Tool Model:	2.75POH
Performed:	Mon Aug 21 14:48:38 2006

Calibrator Value:	1	NAPI
-------------------	---	------

RLL3	1.70					
Dataset: /field/well/run1/_plots/_jobs_/dil Total Length: 39.37 ft Total Weight: 577.00 lb O.D. 4.00 in						