



SUPERIOR
Black Lick, Pa.
Mercer, Pa.
Wooster, Oh.
Cleveland, Ok.
Trinidad, Co.

CEMENT BOND GAMMA RAY

Company Pioneer Natural Resources
Well Jennifer J. 21-28
Field Purgatorie River
County Las Animas
State CO

Company Pioneer Natural Resources
Well Jennifer J. 21-28
Field Purgatorie River
County Las Animas
State CO

Location: API # : 05 071 09352 00
90' FNL & 2199' FWL
SEC 28 TWP 34S RGE 65W
Permanent Datum Ground Level Elevation 7143'
Log Measured From Kelly Bushing 4' Above G.L.
Drilling Measured From Kelly Bushing
Other Services
DEVI SUR/
TEMP
Elevation
K.B. 7147'
D.F. -----
G.L. 7143'

Date	8/8/07						
Run Number	one						
Depth Driller	1385'						
Depth Logger	1347'						
Bottom Logged Interval	1343'						
Top Log Interval	Surf.						
Open Hole Size	7 7/8"						
Type Fluid	water						
Density / Viscosity	///						
Max. Recorded Temp.	99F						
Estimated Cement Top	Surf.						
Time Well Ready	ROA						
Time Logger on Bottom	1:07						
Equipment Number	0703						
Location	Trinidad						
Recorded By	Worley						
Witnessed By							
<div>Borehole Record</div> <div>Tubing Record</div>							
Run Number	Bit	From	To	Size	Weight	From	To
Casing Record	Size			Wgt/Ft	Top		Bottom
Surface String	8 5/8"				00		500'
Prot. String							
Production String	5 1/2"				00		NA
Liner							

<<< Fold Here >>>

All interpretations are opinions based on inferences from electrical or other measurements and we cannot and do not guarantee the accuracy or correctness of any interpretation, and we shall not, except in the case of gross or willful negligence on our part, be liable or responsible for any loss, costs, damages, or expenses incurred or sustained by anyone resulting from any interpretation made by any of our officers, agents or employees. These interpretations are also subject to our general terms and conditions set out in our current Price Schedule.

Comments

Longs Canyon, stay on main road, take hard right after 4th gate, stay on main road to top of hill, right to location.

2 Degrees of Deviation @ T.D.



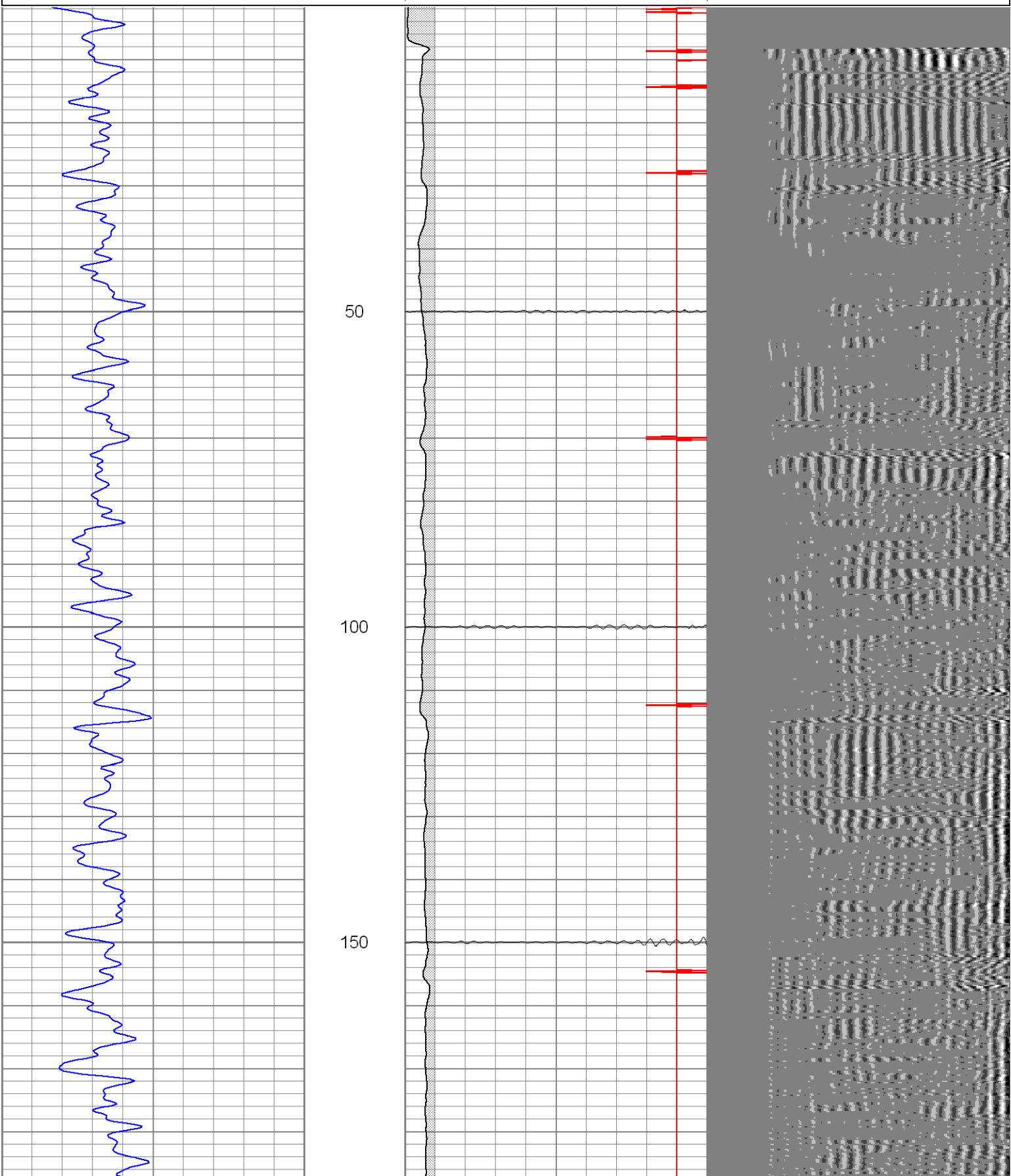
SUPERIOR

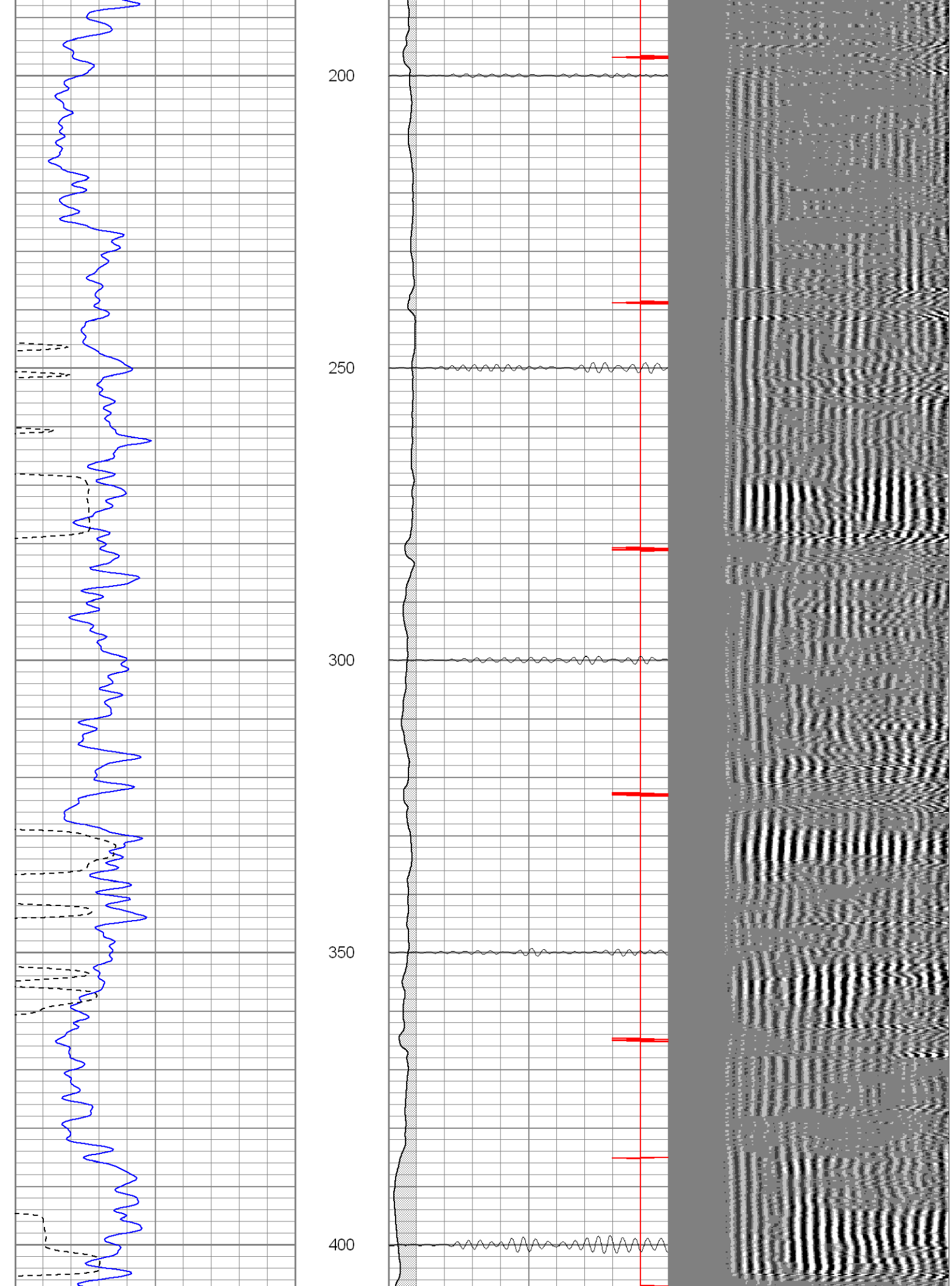
Black Lick, Pa.
Mercer, Pa.
Wooster, Oh.
Cleveland, Ok.
Trinidad, Co.

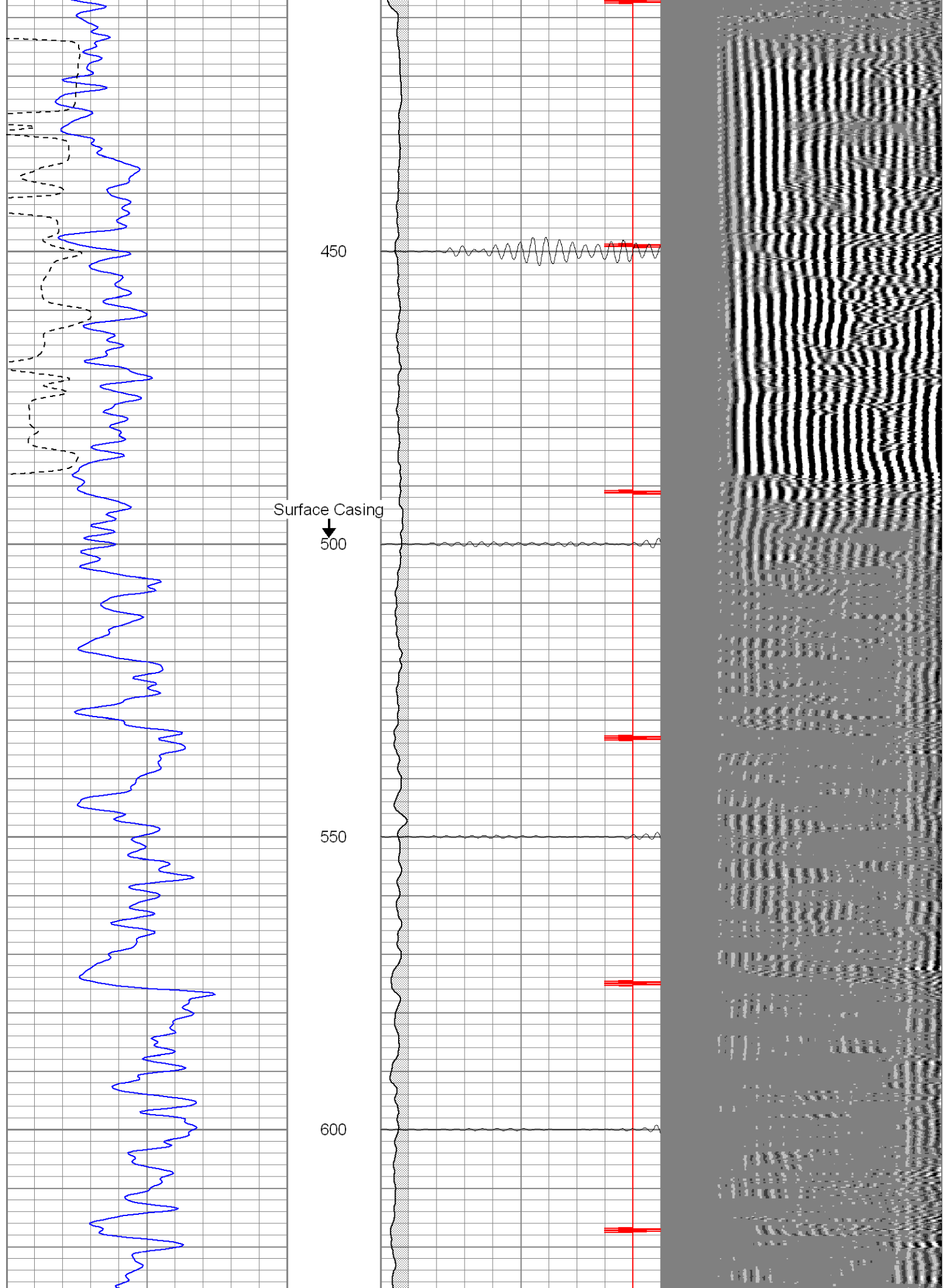
Main Pass

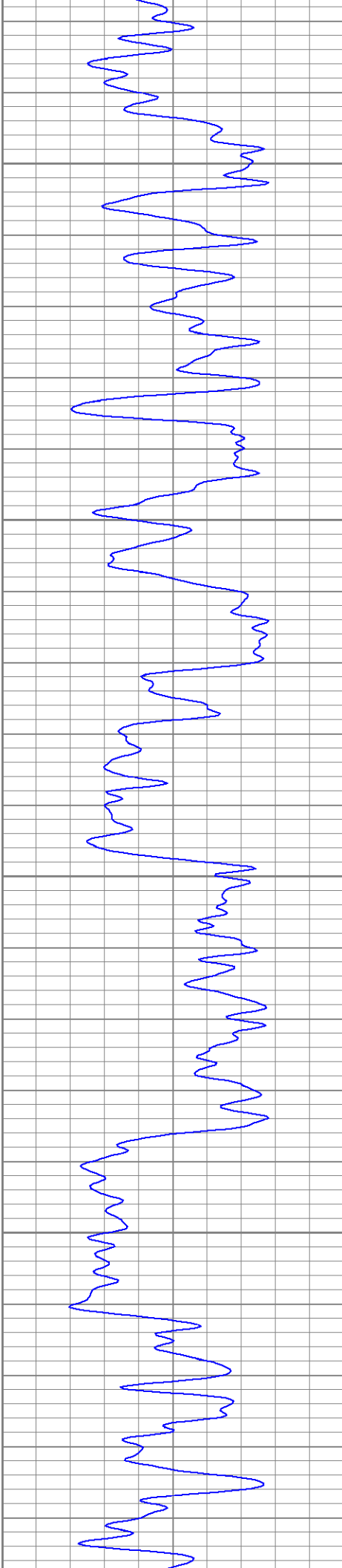
Database File: jenniferj8807b.db
Dataset Pathname: pass2
Presentation Format: cblrt
Dataset Creation: Wed Aug 08 13:11:37 2007 by Log Std Casedhole 07051
Charted by: Depth in Feet scaled 1:240

0	GR (GAPI)	200	0	AMP3 (mV)	100	200	CBL5	1200
400	TT3 (usec)	200	18	CCL	-2			
			200	CBL5	1200			







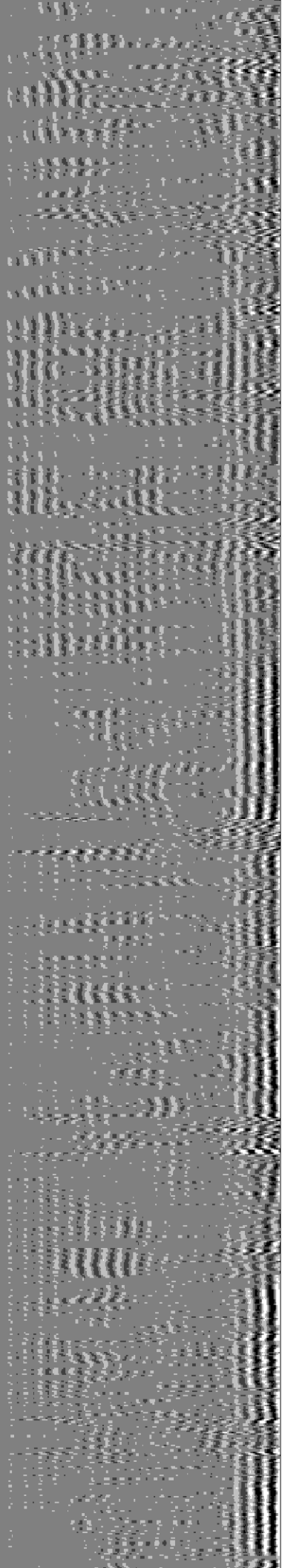


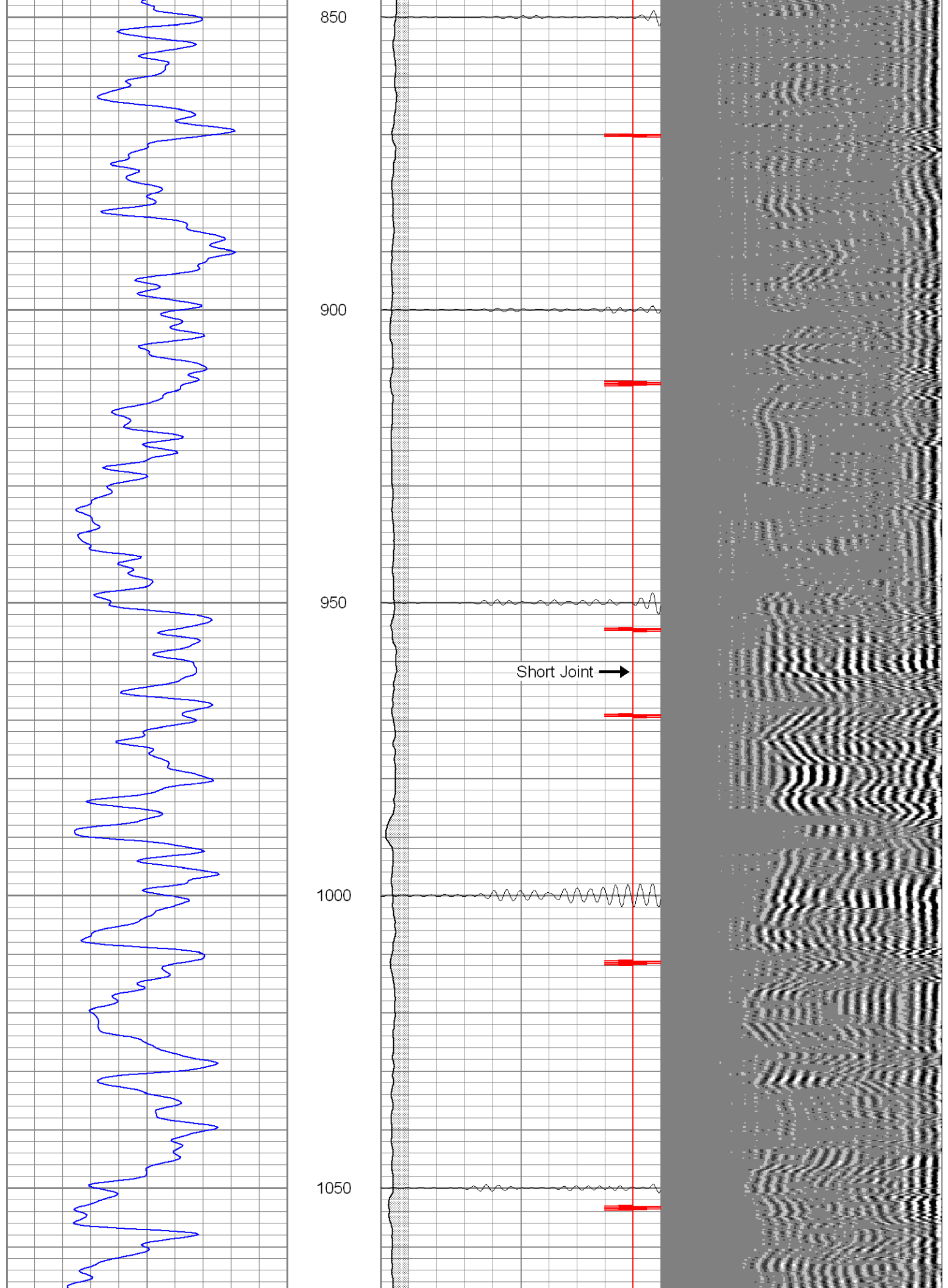
650

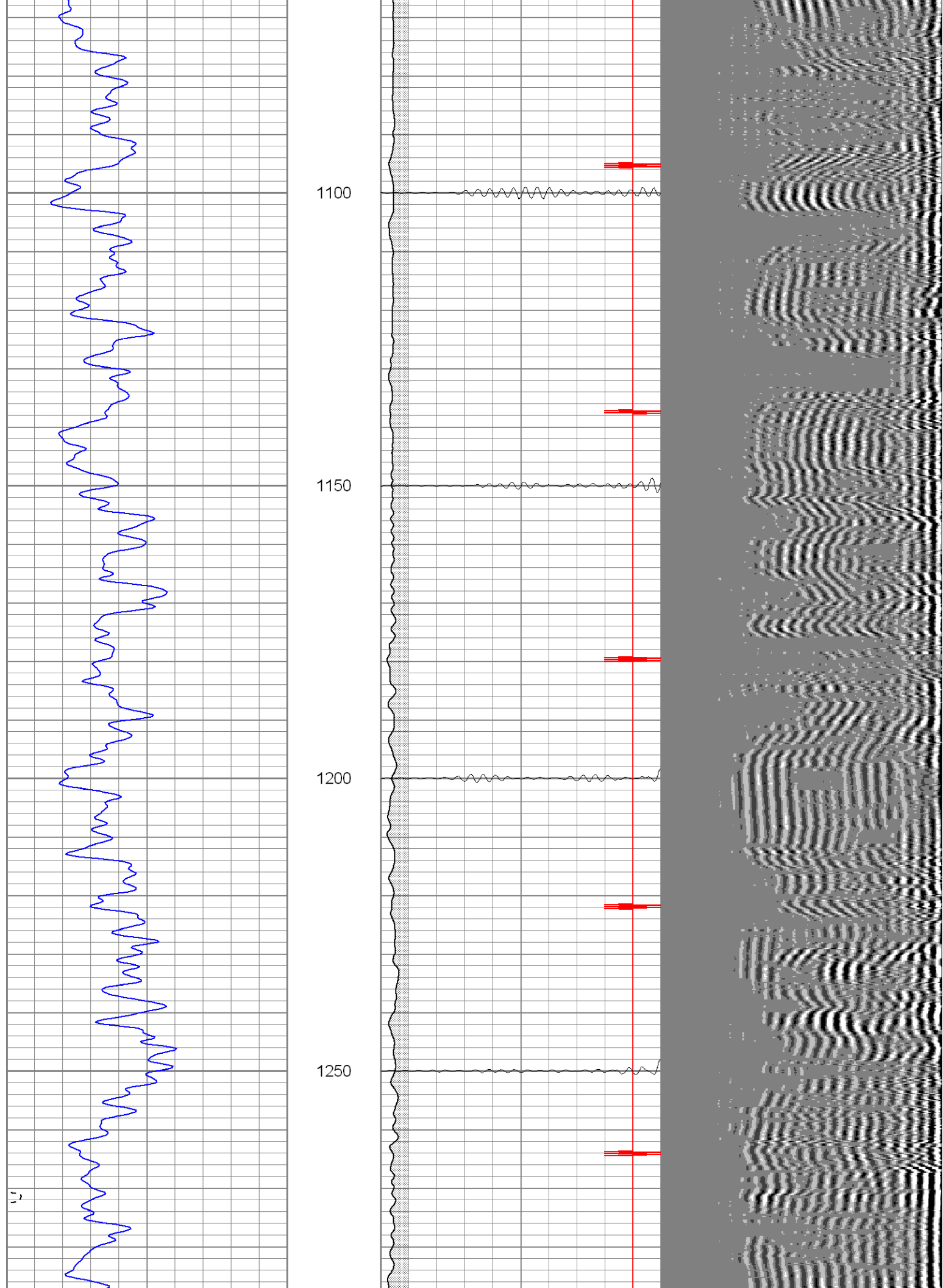
700

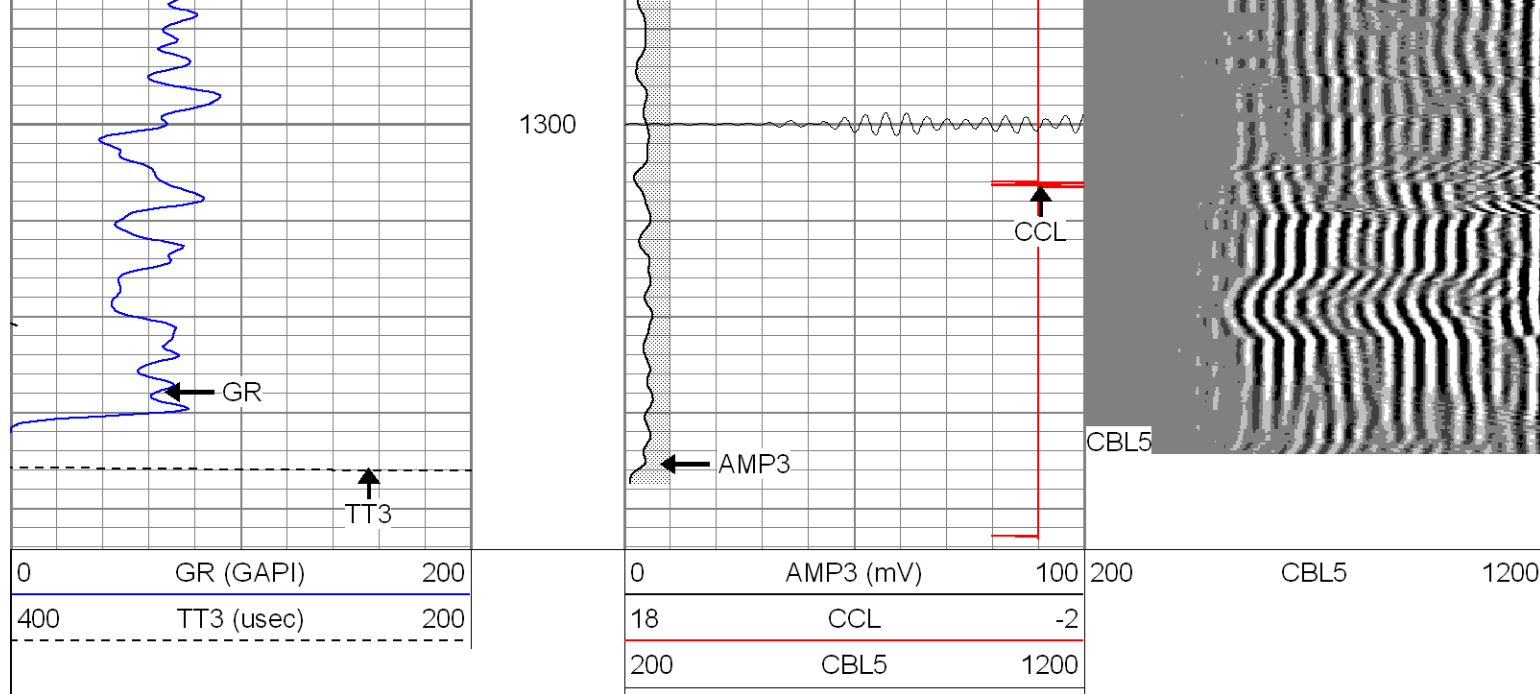
750

800









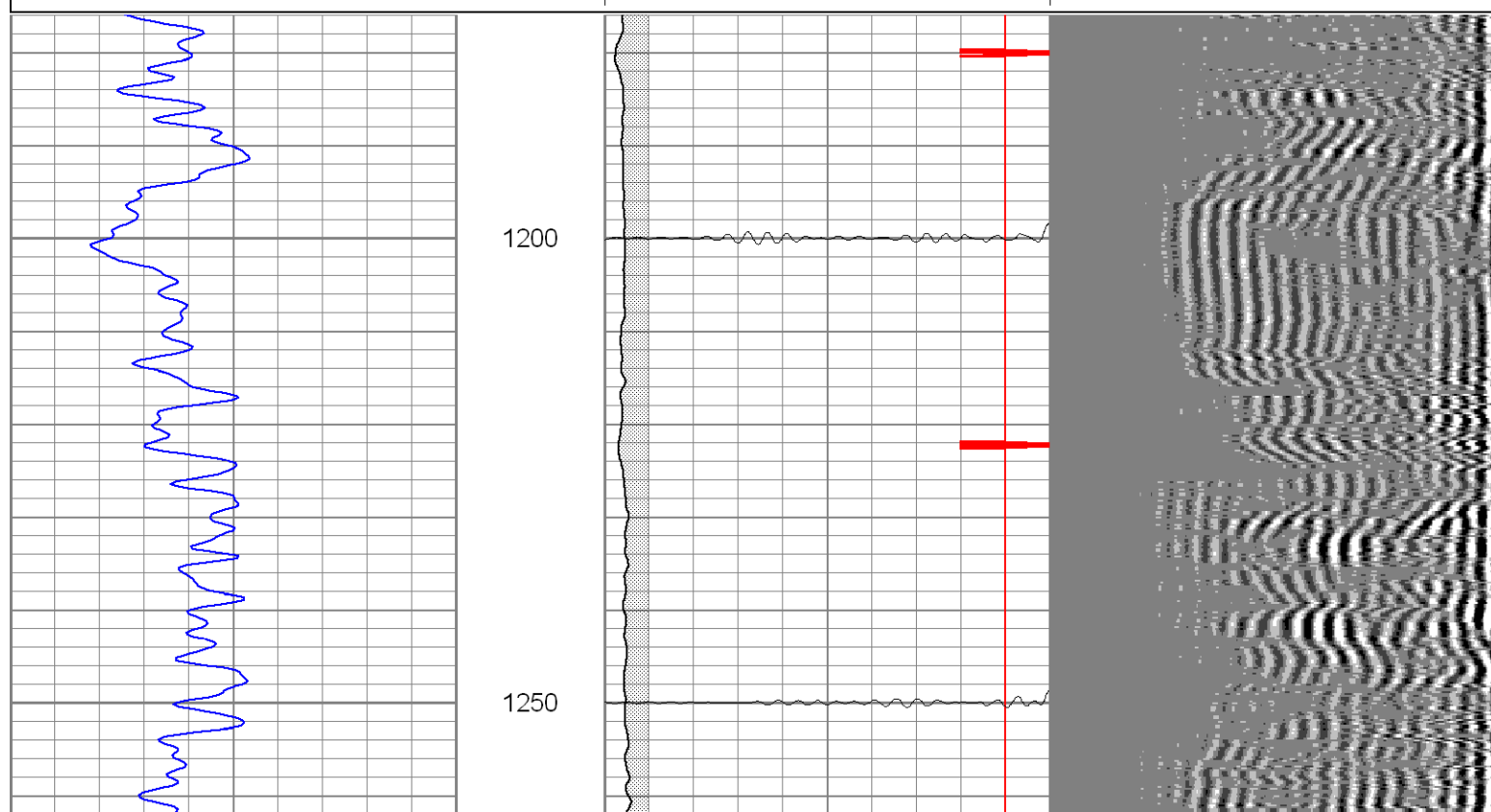
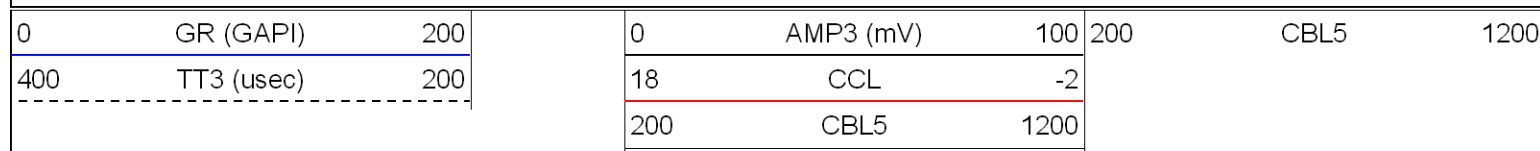


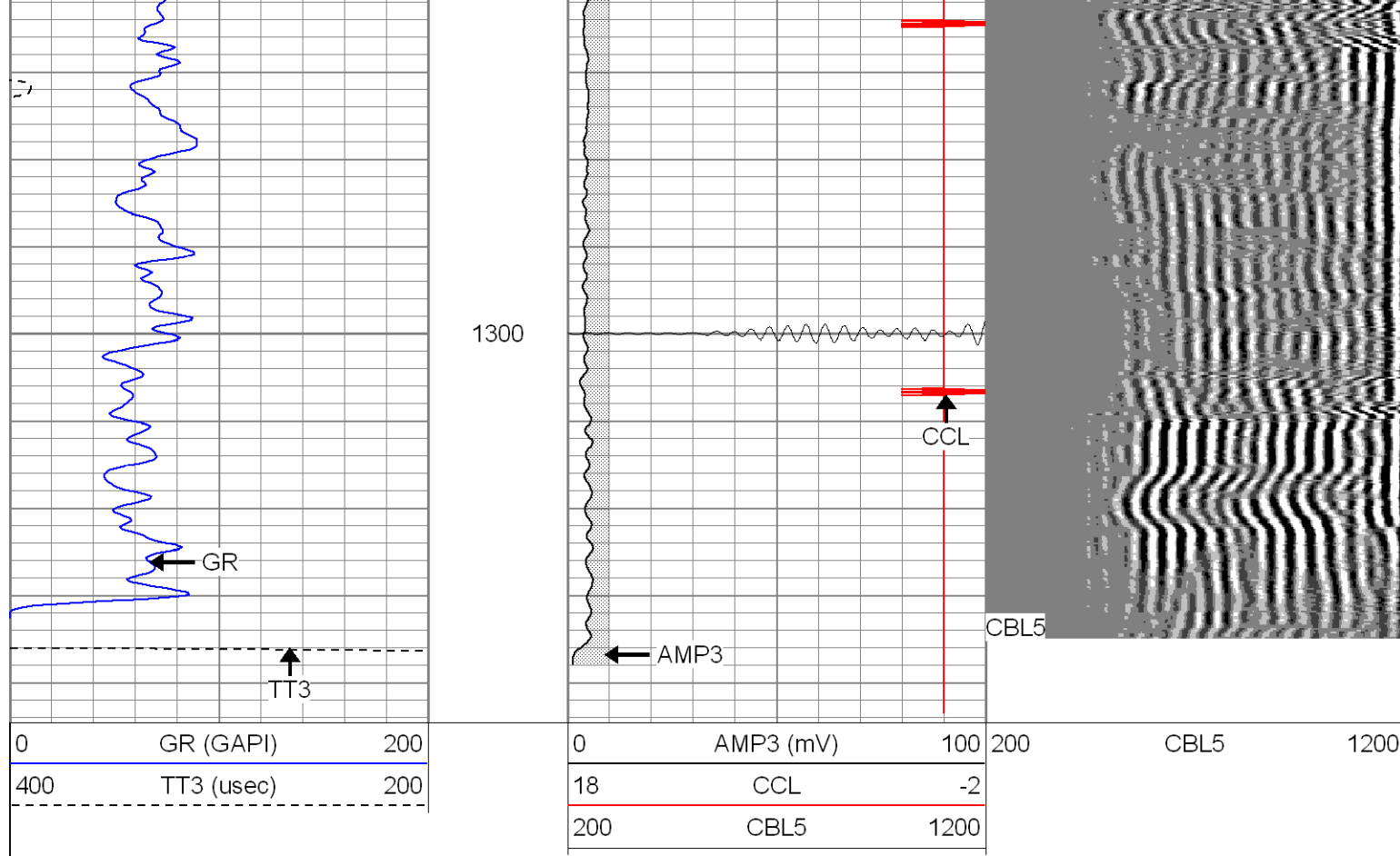
SUPERIOR
WELL SERVICES

Black Lick, Pa.
Mercer, Pa.
Wooster, Oh.
Cleveland, Ok.
Trinidad, Co.

Repeat Section

Database File: jenniferj8807b.db
 Dataset Pathname: pass1
 Presentation Format: cblrt
 Dataset Creation: Wed Aug 08 13:06:07 2007 by Log Std Casedhole 07051
 Charted by: Depth in Feet scaled 1:240





Calibration Report

Database File: jenniferj8807b.db
 Dataset Pathname: pass1
 Dataset Creation: Wed Aug 08 13:06:07 2007 by Log Std Casedhole 07051

Cement Bond Log Calibration Report

Serial Number:	Titan2		
Tool Model:	T2		
Performed:	Sat Aug 04 08:50:10 2007		
Depth:	0	ft	
Casing Diameter:	0	in	
	3' Spacing	5' Spacing	
Signal Zero:	0	0	mV
Calibrated Amplitude:	85	85	mV
Reading at Signal Zero:	-0.03	0	V
Reading in Free Pipe:	1.8	1.6	V
Gain:	46.4481	53.125	
Offset:	1.39344	0	

Gamma Ray Calibration Report

Serial Number:	TITAN2	
Tool Model:	T2	
Performed:	Sat Aug 04 08:46:23 2007	
Calibrator Value:	1.0	GAPI
Background Reading:	0.0	cps
Calibrator Reading:	1.0	cps
Sensitivity:	1.6000	GAPI/cps

CELESTINE, CHARLES