



SUPERIOR
Black Lick, Pa.
Mercer, Pa.
Wooster, Oh.
Cleveland, Ok.
Trinidad, Co.

DUAL INDUCTION LOG

Company	XTO Energy Inc.		
Well	Apache Canyon 35-12		
Field	Purgatoire River		
County	Las Animas	State	Colorado
Location:	API # : 05 071 09325 00 1991' FSL & 1072' FWL		Other Services CDL NEUTRON
Permanent Datum	SEC 35 TWP 33S RGE 67W	Elevation	7080'
Log Measured From	Ground Level	Elevation	7080'
Drilling Measured From	Ground Level	Elevation	7080'
Date	9-04-07		
Run Number	One		
Depth Driller	1850'		
Depth Logger	1852'		
Bottom Logged Interval	1850'		
Top Log Interval	Surface		
Casing Driller	8 5/8" @ 498'		
Casing Logger	496'		
Bit Size	7 7/8"		
Type Fluid in Hole	Water		
Density / Viscosity	///		
pH / Fluid Loss	///		
Source of Sample	///		
Rm @ Meas. Temp	///		
Rmf @ Meas. Temp	///		
Rmc @ Meas. Temp	///		
Source of Rmf / Rmc	///		
Rm @ BHT	///		
Time Circulation Stopped	10:30 A.M.		
Time Logger on Bottom	1:15 P.M.		
Maximum Recorded Temperature	96 DEG F		
Equipment Number	T697		
Location	Trinidad		
Recorded By	M. Norton		
Witnessed By	Mr. Don Johnson		

<<< Fold Here >>>

All interpretations are opinions based on inferences from electrical or other measurements and we cannot and do not guarantee the accuracy or correctness of any interpretation, and we shall not, except in the case of gross or willful negligence on our part, be liable or responsible for any loss, costs, damages, or expenses incurred or sustained by anyone resulting from any interpretation made by any of our officers, agents or employees. These interpretations are also subject to our general terms and conditions set out in our current Price Schedule.

Comments

Well Directions:
First Bosque entrance, right on Cherry Canyon,
at Y stay right, first left to location.

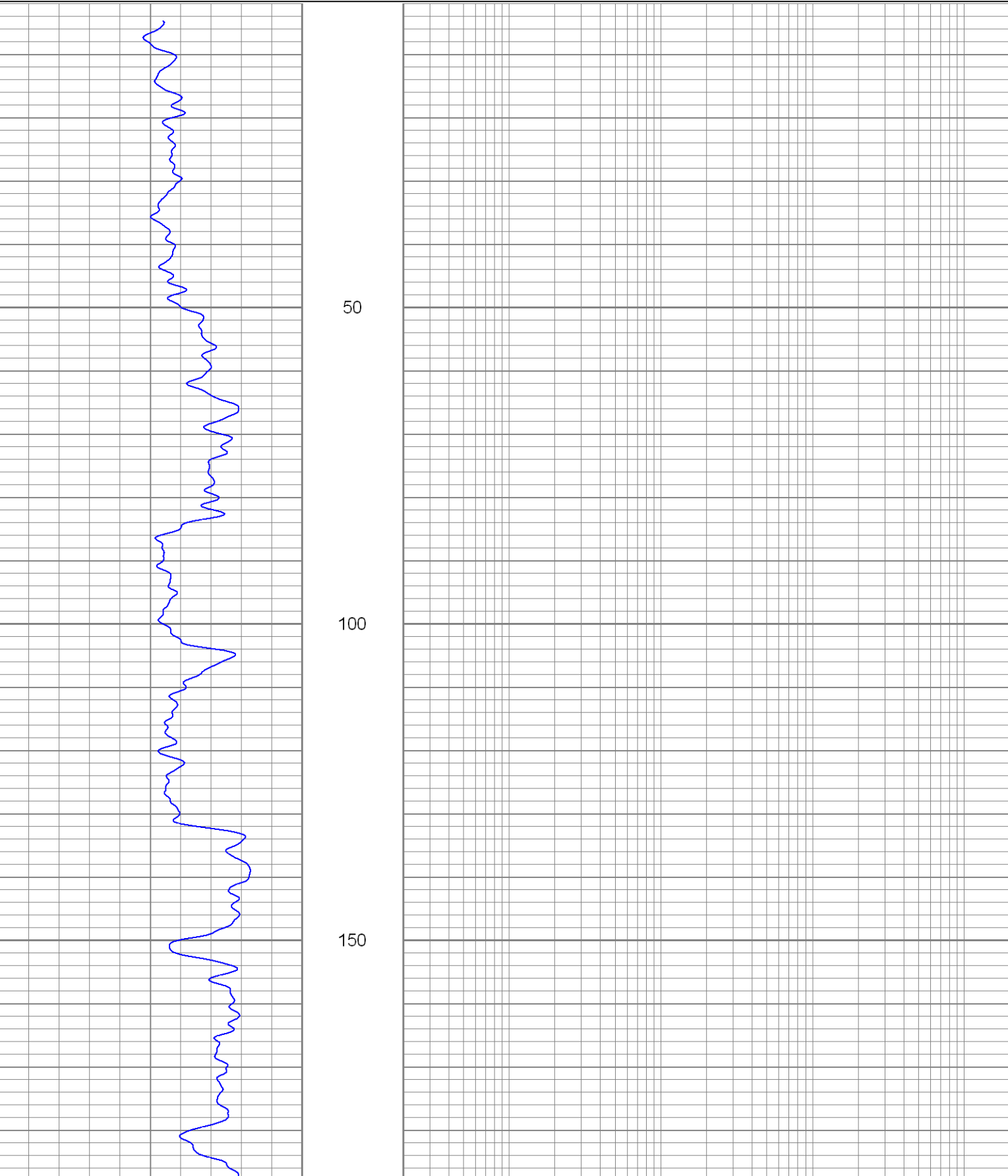


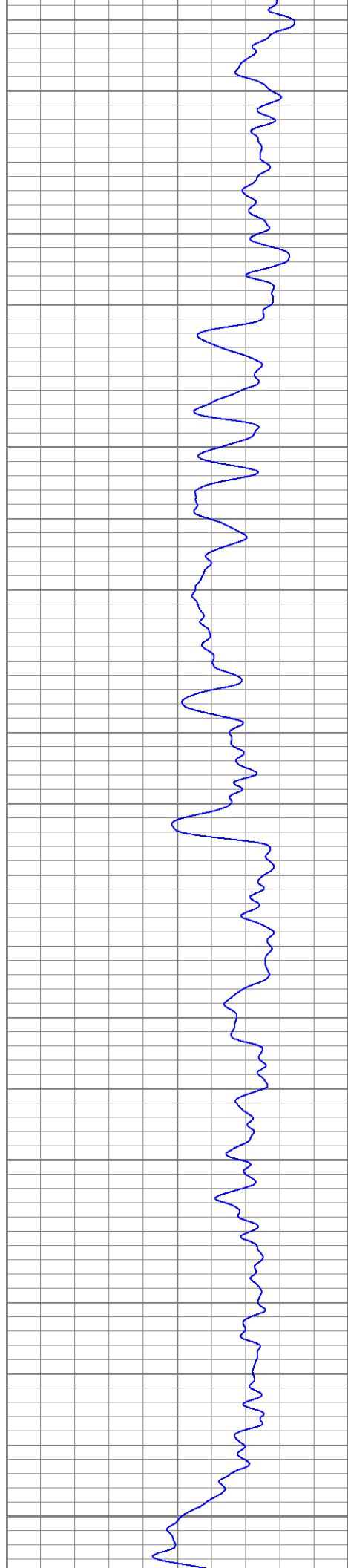
SUPERIOR
Black Lick, Pa.
Mercer, Pa.
Wooster, Oh.
Cleveland, Ok.
Trinidad, Co.

Main Pass

Database File: xtoac3512.db
Dataset Pathname: pass2.1
Presentation Format: dil
Dataset Creation: Tue Sep 04 14:21:26 2007 by Calc Open-Cased 061129
Charted by: Depth in Feet scaled 1:240

0	GR (GAPI)	200	0.2	RILM (Ohm-m)	2000
-100	SP (mV)	100	0.2	RILD (Ohm-m)	2000
			0.2	RLL3 (Ohm-m)	2000





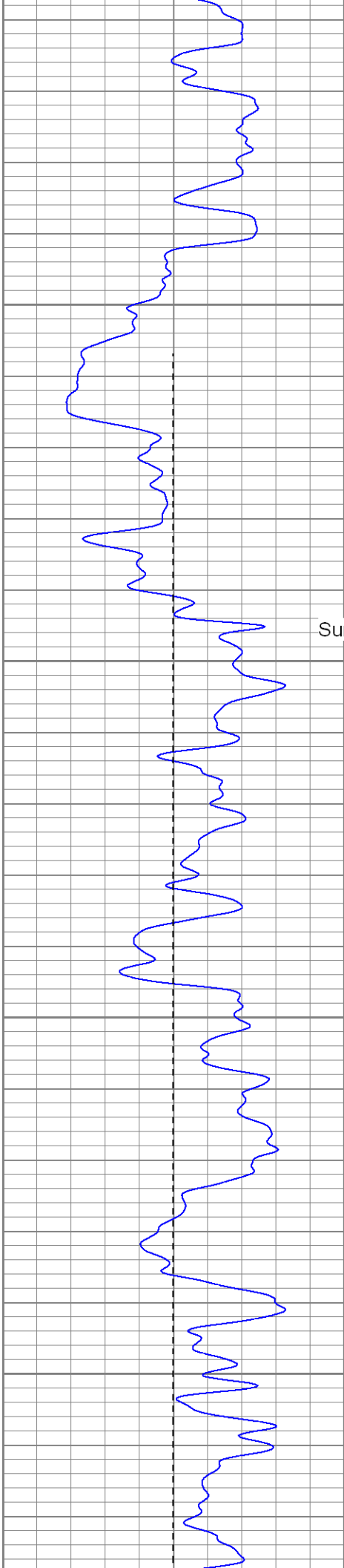
200

250

300

350

400



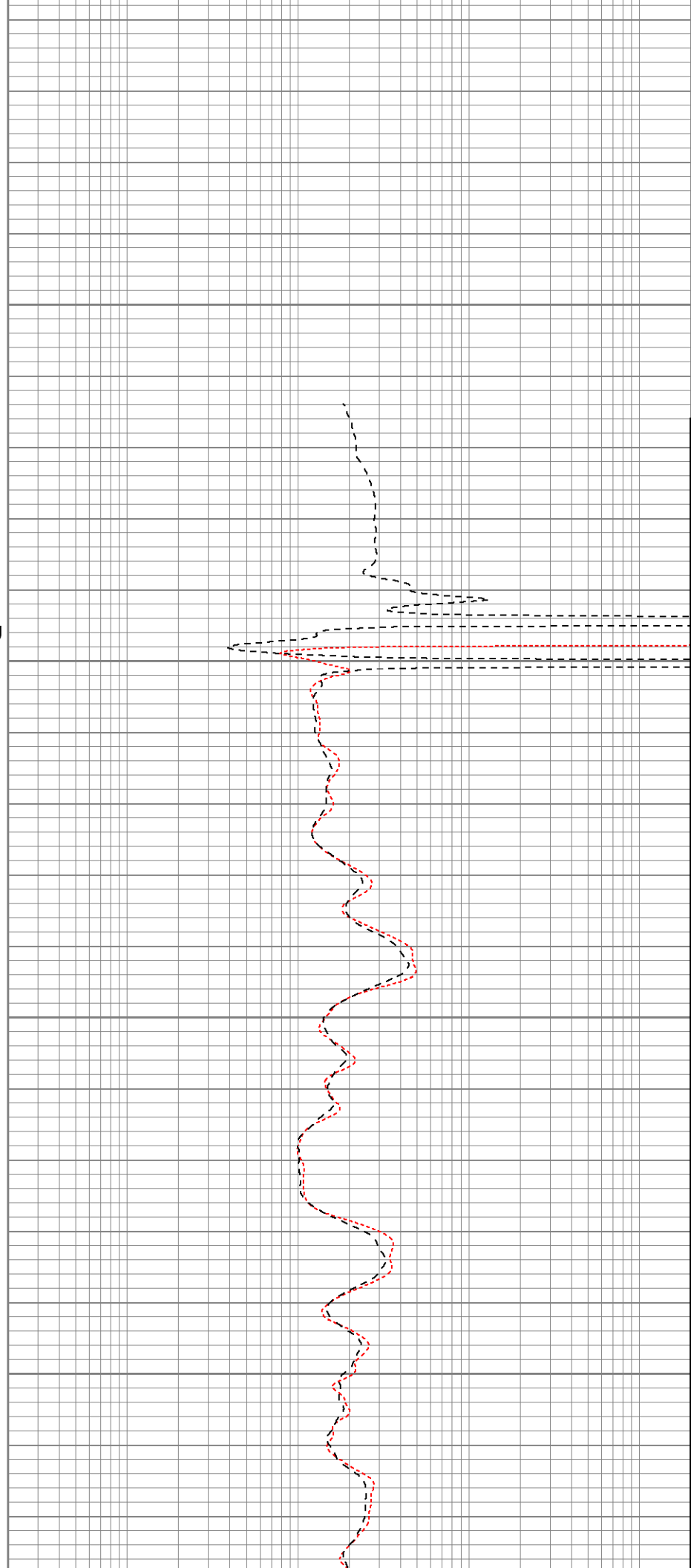
450

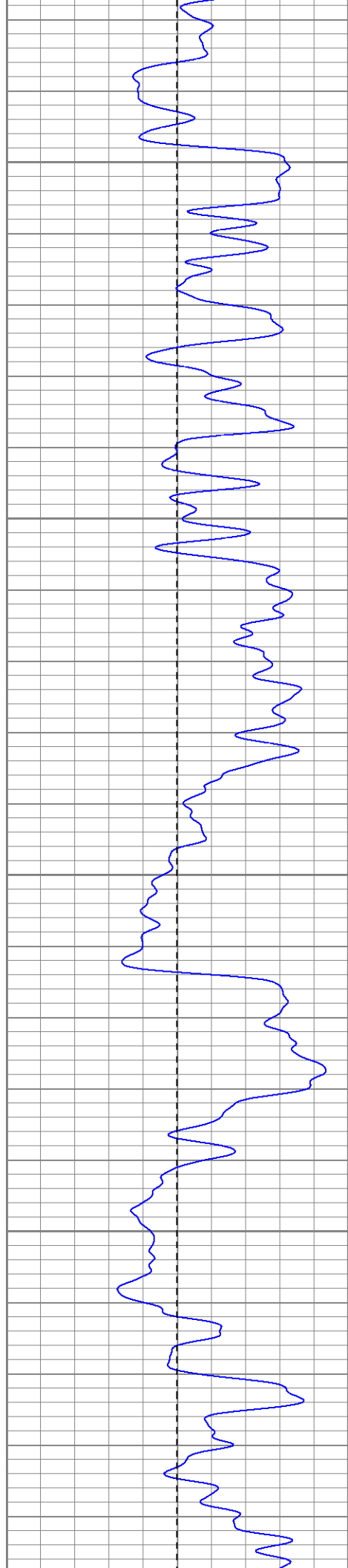
Surface Casing

500

550

600



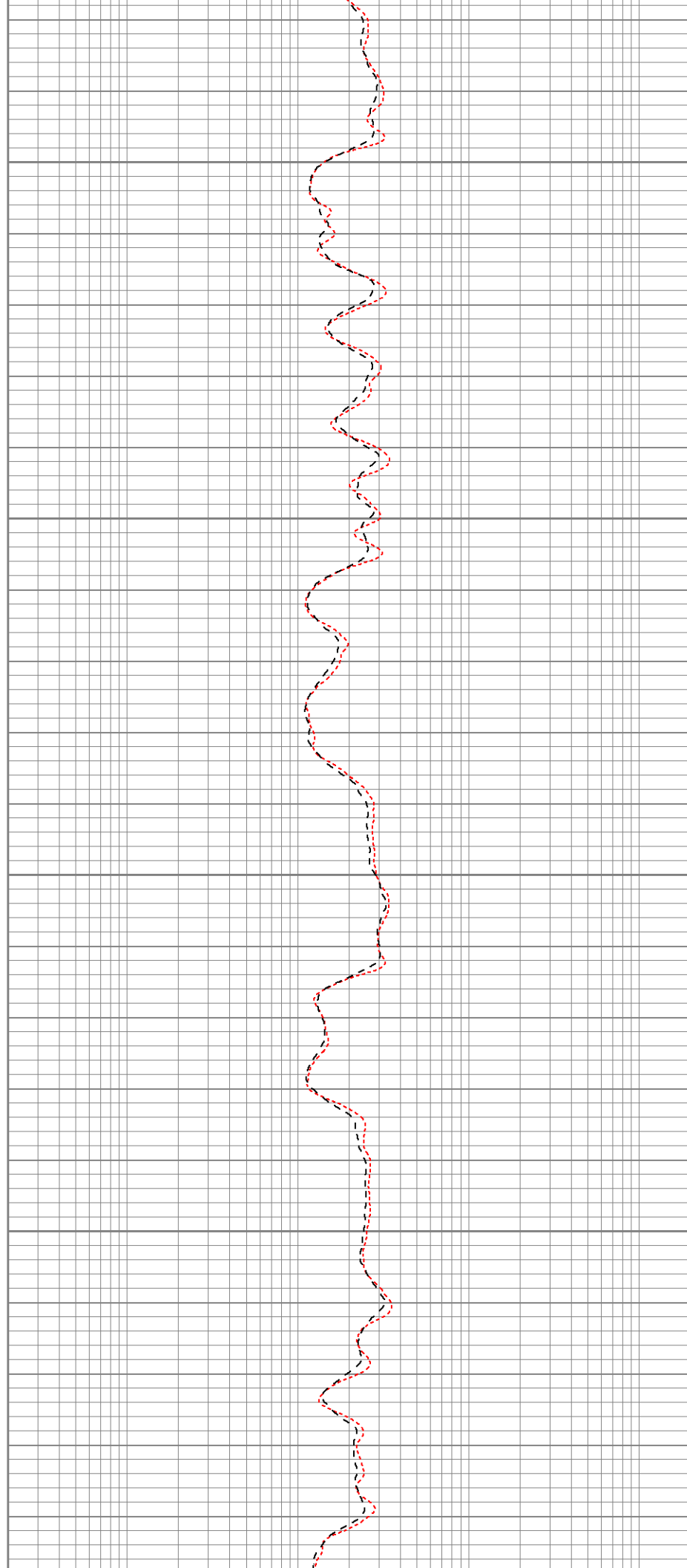


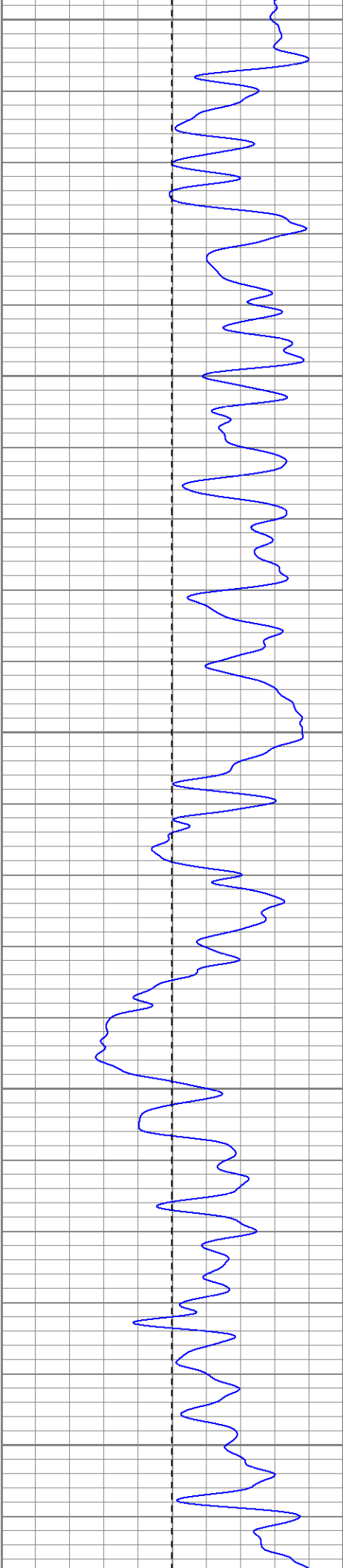
650

700

750

800





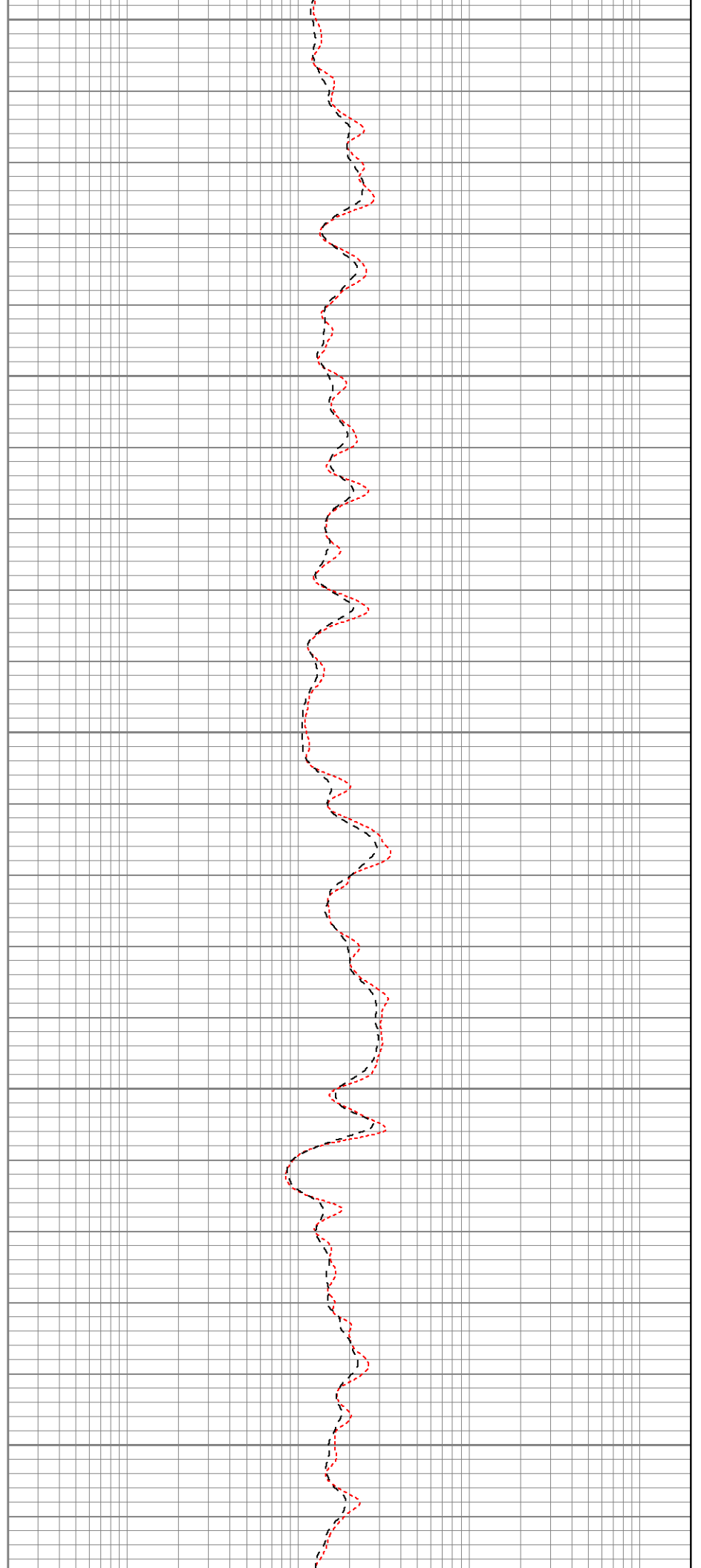
850

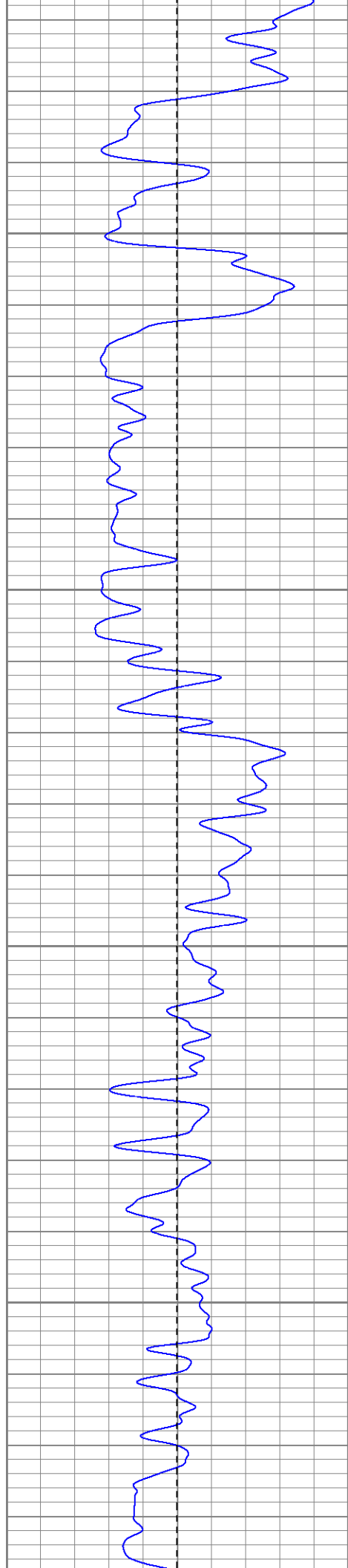
900

950

1000

1050



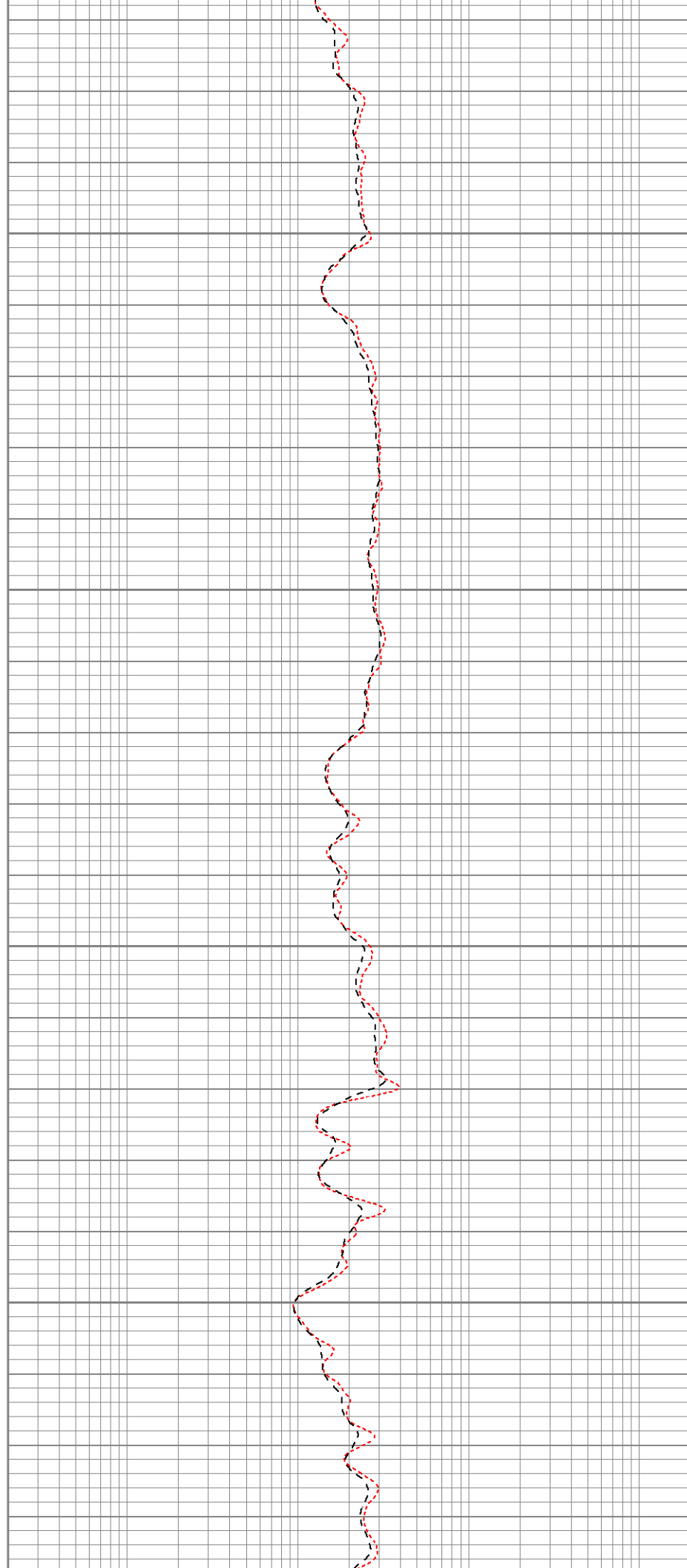


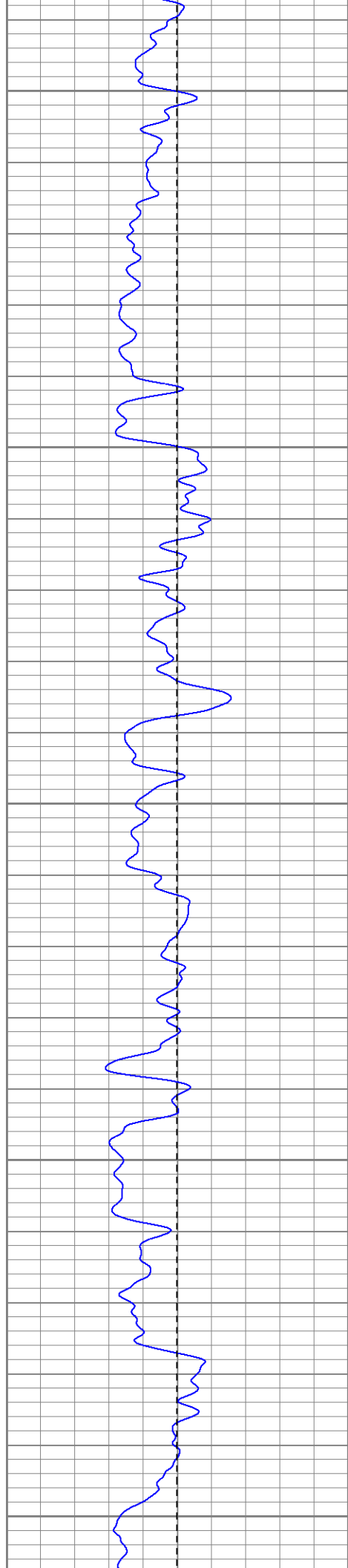
1100

1150

1200

1250





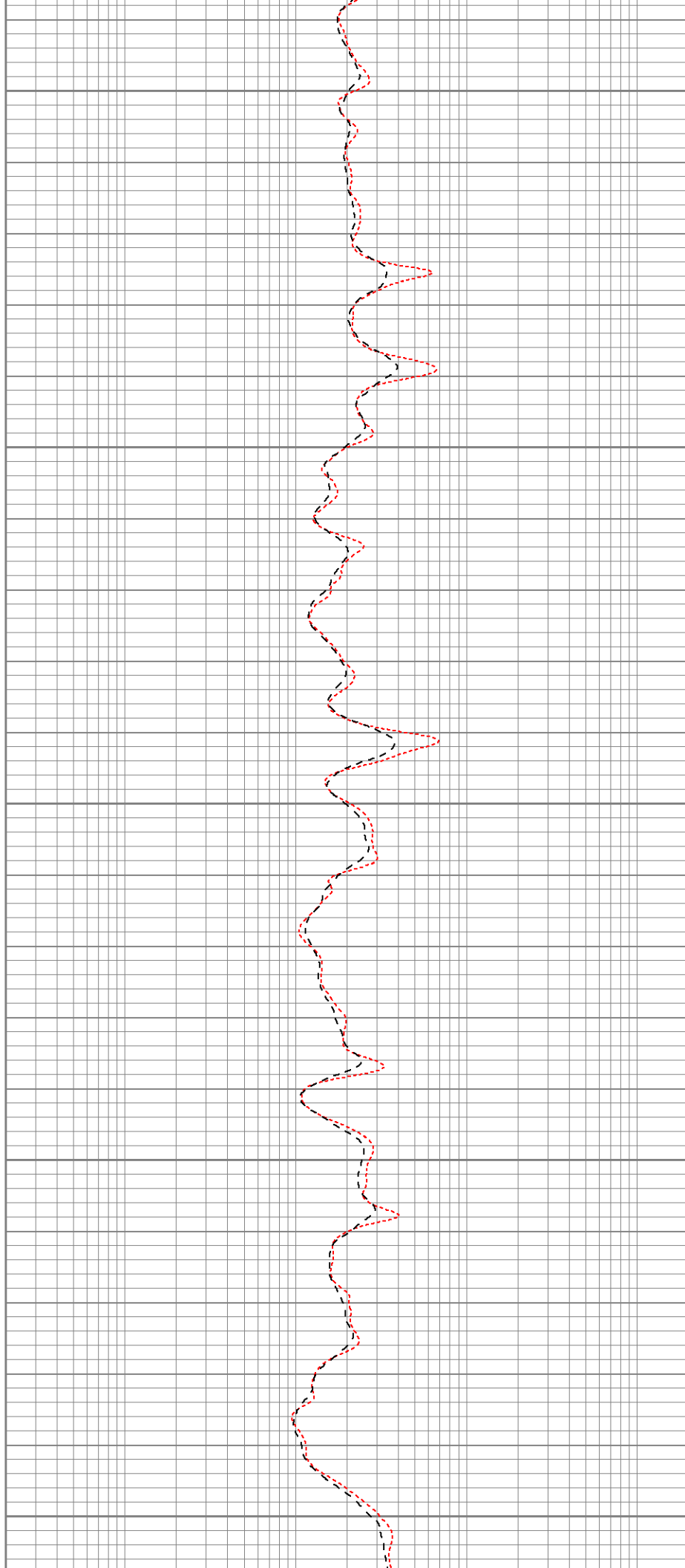
1300

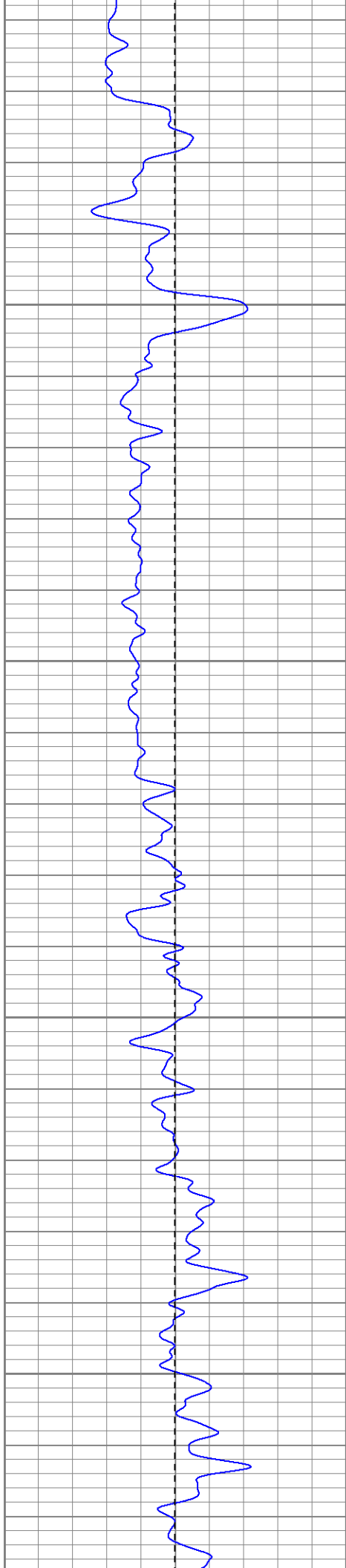
1350

1400

1450

1500



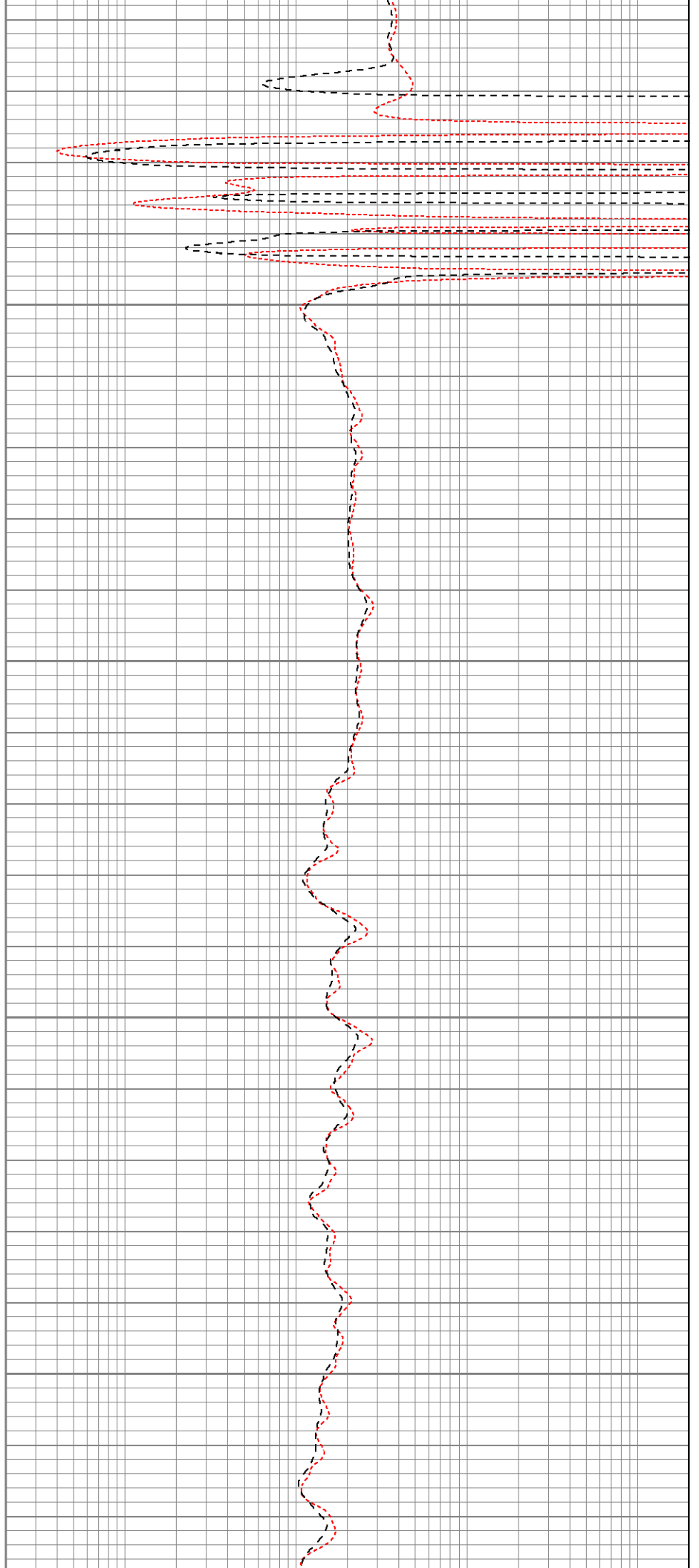


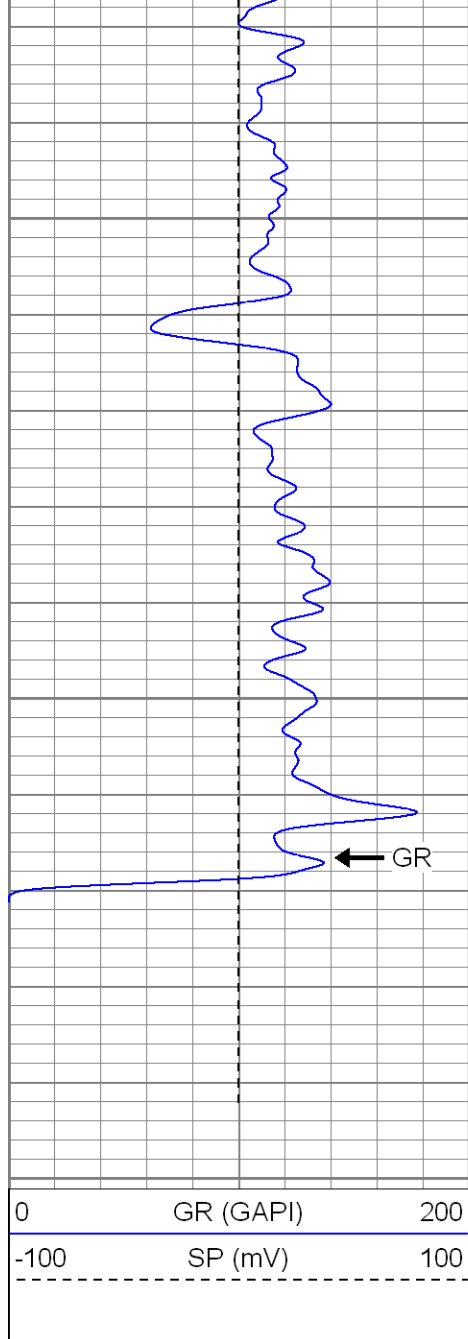
1550

1600

1650

1700

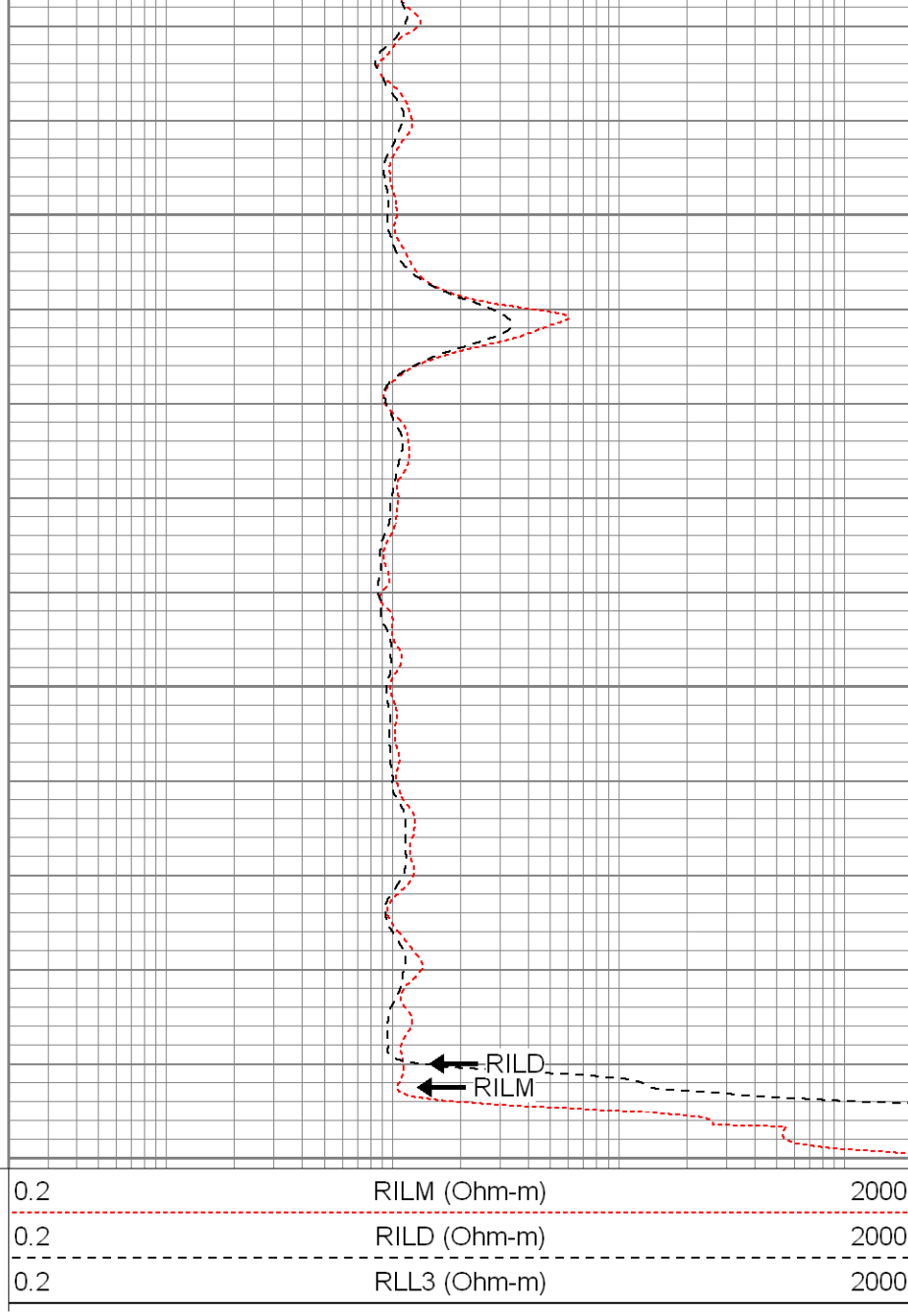




1750

1800

1850

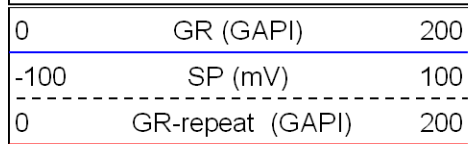


SUPERIOR

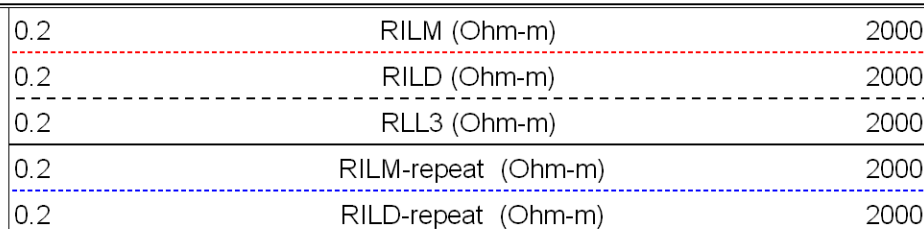
Black Lick, Pa.
Meroer, Pa.
Wooster, Oh.
Cleveland, Ok.
Trinidad, Co.

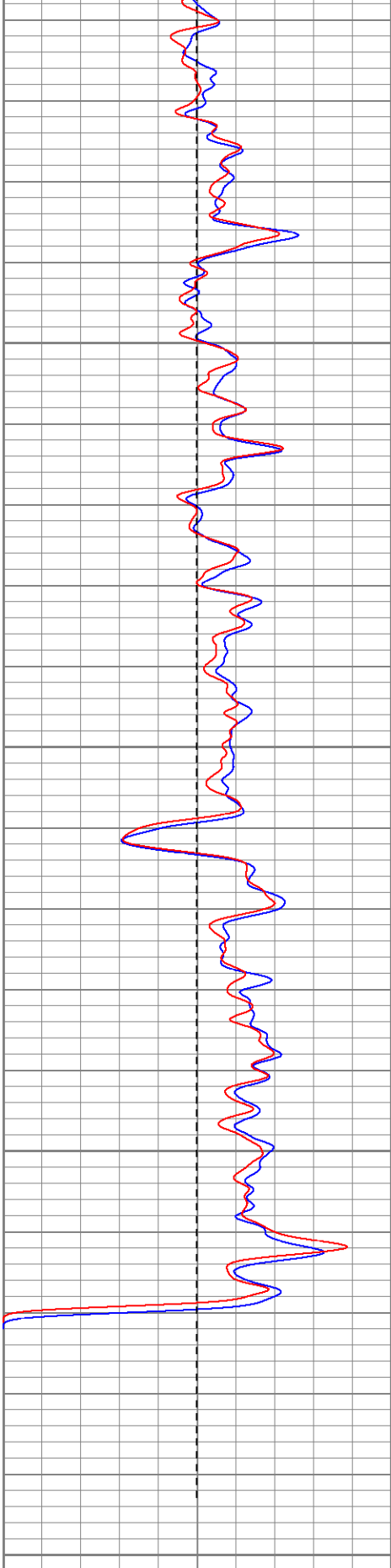
Repeat Section

Database File: xtoac3512.db
Dataset Pathname: pass1.1
Presentation Format: dil
Dataset Creation: Tue Sep 04 14:15:37 2007 by Calc Open-Cased 061129
Charted by: Depth in Feet scaled 1:240



1650





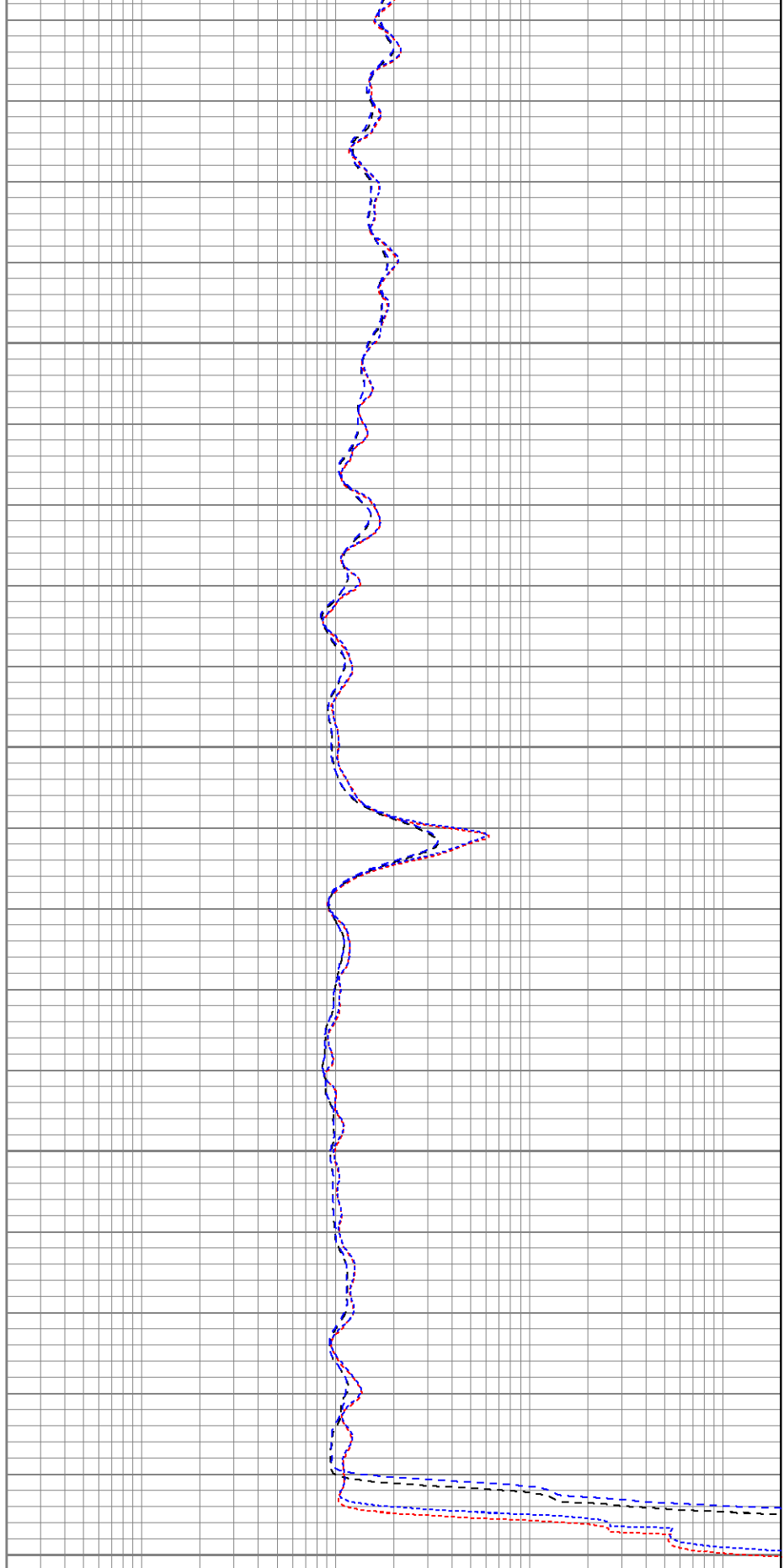
0	GR (GAPI)	200
-100	SP (mV)	100
0	GR-repeat (GAPI)	200

1700

1750

1800

1850



0.2	RILM (Ohm-m)	2000
0.2	RILD (Ohm-m)	2000
0.2	RLL3 (Ohm-m)	2000
0.2	RILM-repeat (Ohm-m)	2000
0.2	RILD-repeat (Ohm-m)	2000

Calibration Report									
Database File:		xtoac3512.db							
Dataset Pathname:		pass2							
Dataset Creation:		Tue Sep 04 13:29:00 2007 by Log Open-Cased 061129							
Dual Induction Calibration Report									
Serial-Model:		5375-G							
Surface Cal Performed:		Tue Sep 04 13:04:50 2007							
Downhole Cal Performed:		Thu Aug 09 09:45:00 2007							
Surface Calibration									
		Readings			References			Results	
Loop:	Air	Loop		Air	Loop		m	b	
Deep	0.002	0.622	V	0.000	500.000	mmho-m	500.000	2.000	
Medium	0.004	0.745	V	0.000	550.000	mmho-m	450.000	2.000	
Internal:	Zero	Cal		Zero	Cal		m	b	
Deep	0.002	0.621	V	0.000	500.000	mmho-m	500.000	2.000	
Medium	0.004	0.745	V	0.000	550.000	mmho-m	450.000	2.000	
Downhole Calibration									
		Readings			References			Results	
Internal:	Zero	Cal		Zero	Cal		m	b	
Deep	0.000	0.000	mmho-m	-0.227	499.739	mmho-m	1.000	0.000	
Medium	0.000	0.000	mmho-m	-0.131	549.624	mmho-m	1.000	0.000	
Shallow	2.506	0.009	V	500.000	2.000	Ohm-m	0.000	2000.000	
Compensated Density Calibration Report									
Serial-Model:		2118-poilex							
Source / Verifier:		/							
Master Calibration Performed:		Fri Aug 17 09:14:33 2007							
Master Calibration									
		Density		Far Detector		Near Detector			
Magnesium	1.710	g/cc		698.03		691.84	cps		
Aluminum	2.590	g/cc		159.73		473.01	cps		
Spine Angle = 75.54				Density/Spine Ratio = 0.578					
		Size		Reading					
Small Ring	7.85	in		4.35	V				
Large Ring	14.00	in		9.25	V				
Gamma Ray Calibration Report									
Serial Number:		2001							
Tool Model:		OH							
Performed:		Wed Aug 08 12:47:02 2007							
Calibrator Value:		1.0		GAPI					
Background Reading:		0.0		cps					
Calibrator Reading:		1.0		cps					

Calibrator Reading:	1.0	cps
Sensitivity:	0.1700	GAPI/cps

Neutron Calibration Report

Serial Number:	5145	
Tool Model:	G	
Performed:	Wed Aug 08 10:32:23 2007	
Calibrator Value:	1200	NAPI
Calibrator Reading:	1700	cps
Sensitivity:	1	NAPI/cps

Sensor	Offset (ft)	Schematic	Description	Len (ft)	OD (in)	Wt (lb)	
NEU	37.19		None	0.75	1.50	5.00	
			NEU-G (5145) Gearhart Epithermal	5.75	3.50	85.00	
GR	31.62		GR-OH (2001) SIE	3.50	3.25	40.00	
			CDL-poilex (2118)	8.79	4.00	275.00	
LSD DCAL SSD	23.45						
	23.04						
	22.91						
CILD SP	10.60			DIL-G (5375) Gearhart	20.83	4.00	345.00
	10.60						
CILM	6.89						
RLL3	1.70						
Dataset: xtoac3512.db: field/well/run1/pass2							
Total Length: 39.62 ft							
Total Weight: 750.00 lb							
O.D. 4.00 in							