

EOG RESOURCES, INC.

T12N, R62W, 6th P.M.

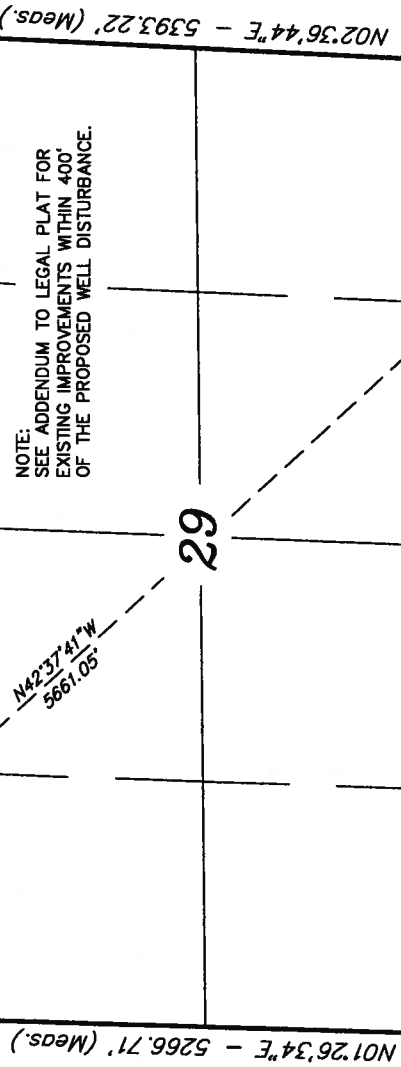
Well location, RANDALL CREEK #02-29H, located as shown in the SE 1/4 SE 1/4 of Section 29, T12N, R62W, 6th P.M., Weld County, Colorado.

BASIS OF ELEVATION

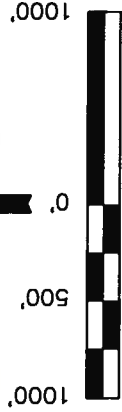
SPOT ELEVATION AT THE NORTHEAST CORNER OF SECTION 1, T11N, R63W, 6th P.M. TAKEN FROM THE HEREFORD, QUADRANGLE, COLORADO, WELD COUNTY, 7.5 MINUTE QUAD (TOPOGRAPHIC MAP) PUBLISHED BY THE UNITED STATES DEPARTMENT OF THE INTERIOR, GEOLOGICAL SURVEY. SAID ELEVATION IS MARKED AS BEING 5352 FEET.

BASIS OF BEARINGS

BASIS OF BEARINGS IS A G.P.S. OBSERVATION.



NOTE: SEE ADDENDUM TO LEGAL PLAT FOR EXISTING IMPROVEMENTS WITHIN 400' OF THE PROPOSED WELL DISTURBANCE.



SCALE

CERTIFICATE

THIS IS TO CERTIFY THAT THE ABOVE PLAT WAS PREPARED FROM FIELD NOTES OF ACTUAL SURVEYS MADE BY ME OR UNDER MY SUPERVISION AND THAT THE SAME ARE TRUE AND CORRECT TO THE BEST OF MY KNOWLEDGE AND BELIEF.

REGISTERED LAND SURVEYOR  
REGISTRATION NO. 972492  
STATE OF COLORADO

Revised: 01-21-10

UNTAH ENGINEERING & LAND SURVEYING  
85 SOUTH 200 EAST - VERNAL, UTAH 84078  
(435) 789-1017

SCALE	DATE SURVEYED:	DATE DRAWN:
1" = 1000'	01-14-10	01-18-10
PARTY	REFERENCES	
A.F. J.J. K.G.	G.L.O. PLAT	
WEATHER	FILE	
COLD	EOG RESOURCES, INC.	

LEGEND:

- 90° SYMBOL
- PROPOSED WELL HEAD.
- SECTION CORNERS LOCATED.

NAD 83 (TARGET BOTTOM HOLE)	NAD 83 (SURFACE LOCATION)
LATITUDE = 40°59'10.28" (40.986189)	LATITUDE = 40°58'29.12" (40.974756)
LONGITUDE = 104°21'01.64" (104.350456)	LONGITUDE = 104°20'11.68" (104.336578)
NAD 27 (TARGET BOTTOM HOLE)	NAD 27 (SURFACE LOCATION)
LATITUDE = 40°59'10.34" (40.986206)	LATITUDE = 40°58'29.18" (40.974772)
LONGITUDE = 104°20'59.80" (104.349944)	LONGITUDE = 104°20'09.84" (104.336087)
STATE PLANE NAD 83	STATE PLANE NAD 83
N: 1604181.853 E: 3317382.583	N: 1600066.310 E: 3321268.594
STATE PLANE NAD 27	STATE PLANE NAD 27
N: 604179.329 E: 2317532.043	N: 600083.853 E: 2321418.008

PDOP = 1.2

EOG RESOURCES, INC.  
ADDENDUM TO LEGAL PLAT FOR  
RANDALL CREEK #02-29H  
SECTION 29, T12N, R62W, 6th P.M.  
501' FSL 501' FEL



SCALE: 1" = 200'  
DATE: 01-18-10  
DRAWN BY: K.G.

