

Patterson

DU,
INDUC
LO

Company	XTO Energy, Inc.
Well	Hill Ranch 27-07
Field	Purgatoire River
County	Las Animas
State	

Company	XTO Energy, Inc.
Well	Hill Ranch 27-07
Field	Purgatoire River
County	Las Animas
State	CO

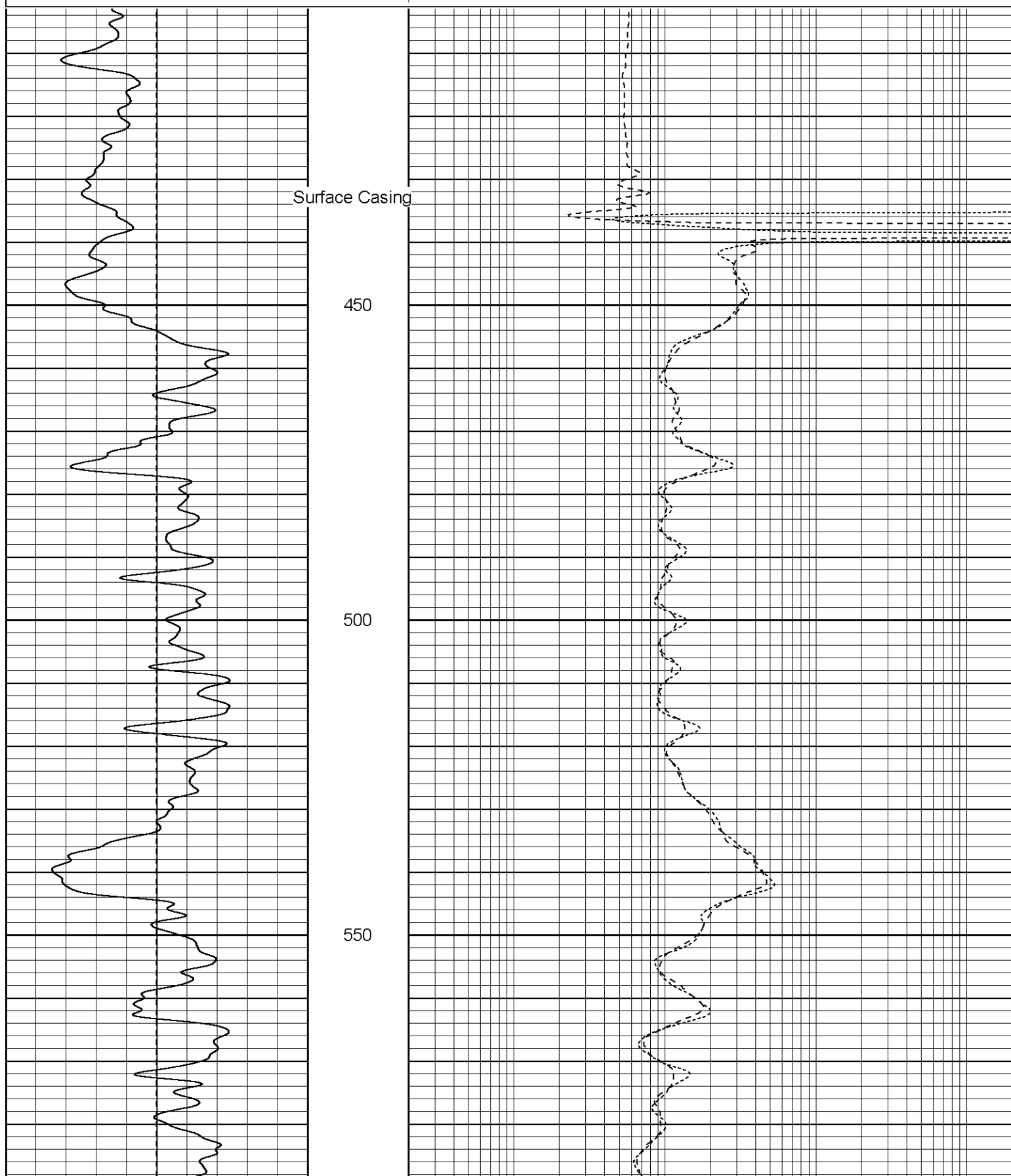
Location:	2434 FNL & 2249' FEL
	SEC 27 TWP 34S RGE 67W
Permanent Datum	Ground Level
Log Measured From	Ground Level
Drilling Measured From	Ground Level

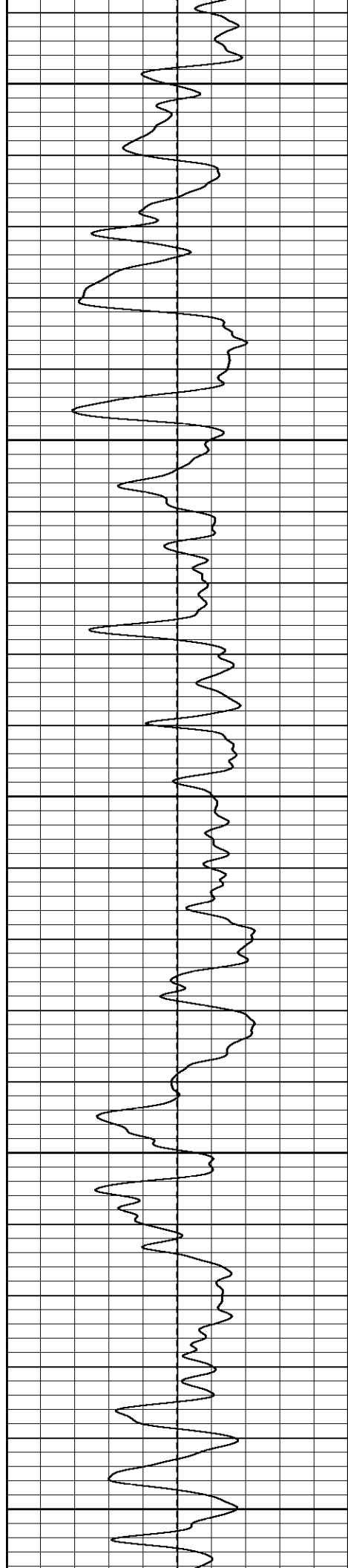
Date	7-25-06	
Run Number	One	
Depth Driller	2215'	
Depth Logger	2218'	
Bottom Logged Interval	2216'	
Top Log Interval	Surface Casing	
Casing Driller	8 5/8" @ 433'	
Casing Logger	433'	
Bit Size	7 7/8"	
Type Fluid in Hole	Water	
Density / Viscosity	///	
pH / Fluid Loss	///	
Source of Sample	///	
Rm @ Meas. Temp	///	
Rmf @ Meas. Temp	///	
Rmc @ Meas. Temp	///	
Source of Rmf / Rmc	///	
Rm @ BHT	///	
Time Circulation Stopped	2:30 P.M.	
Time Logger on Bottom	4:45 P.M.	
Maximum Recorded Temperature	112 DEG F	
Equipment Number	T720	
Location	Trinidad	
Recorded By	M. Norton	
Witnessed By	Mr. Don Johnson	

Database File: xtohr2707.db
Dataset Pathname: pass2.1
Presentation Format: dil
Dataset Creation: Tue Jul 25 18:51:30 2006 by Calc Warrior 7.0 STD Ope
Charted by: Depth in Feet scaled 1:240

0	GR (GAPI)	200
-100	SP (mV)	100

0.2	RILM (Ohm-m)	2000
0.2	RILD (Ohm-m)	2000
0.2	RLL3 (Ohm-m)	2000





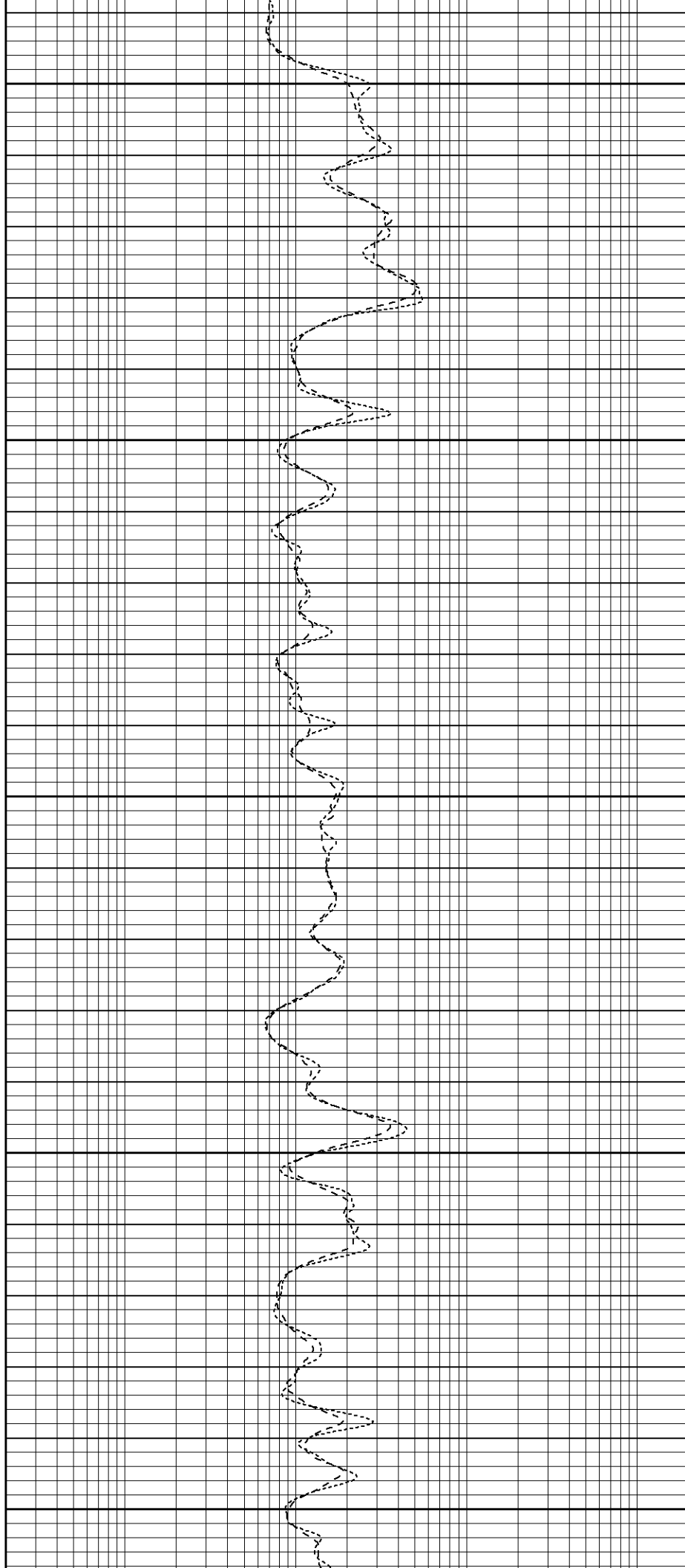
600

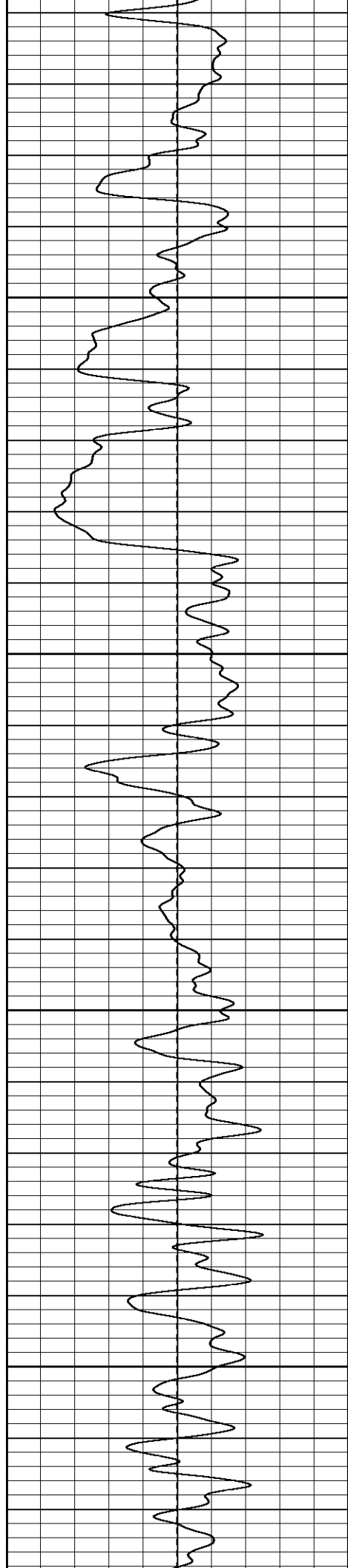
650

700

750

800



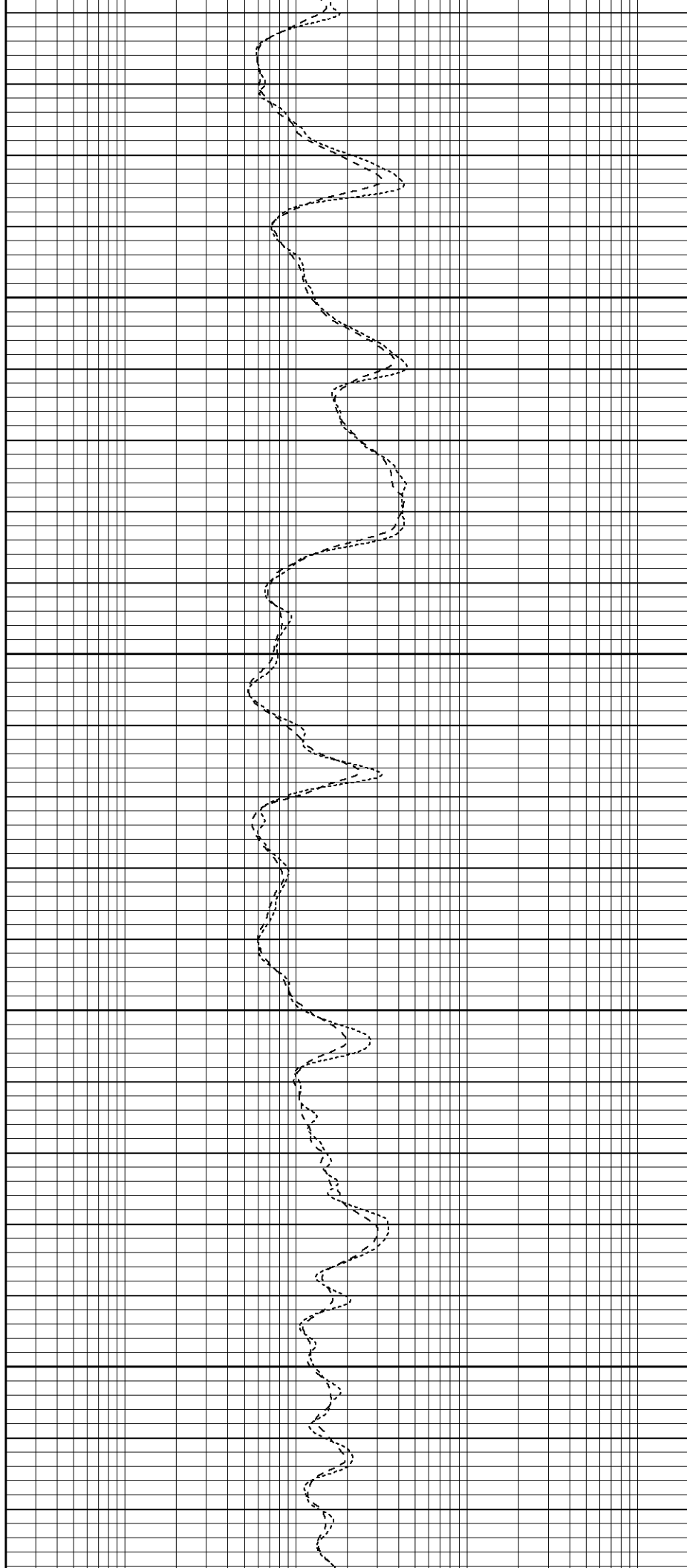


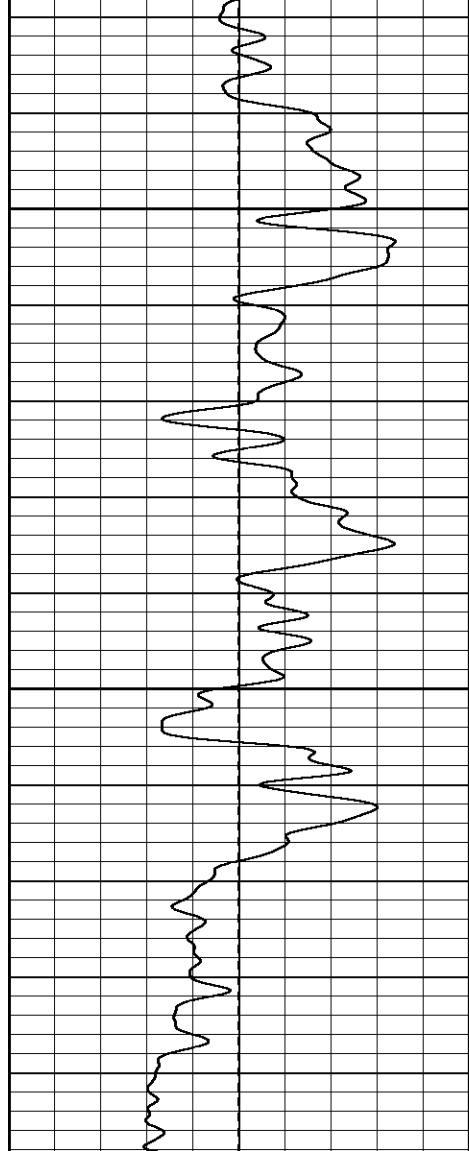
850

900

950

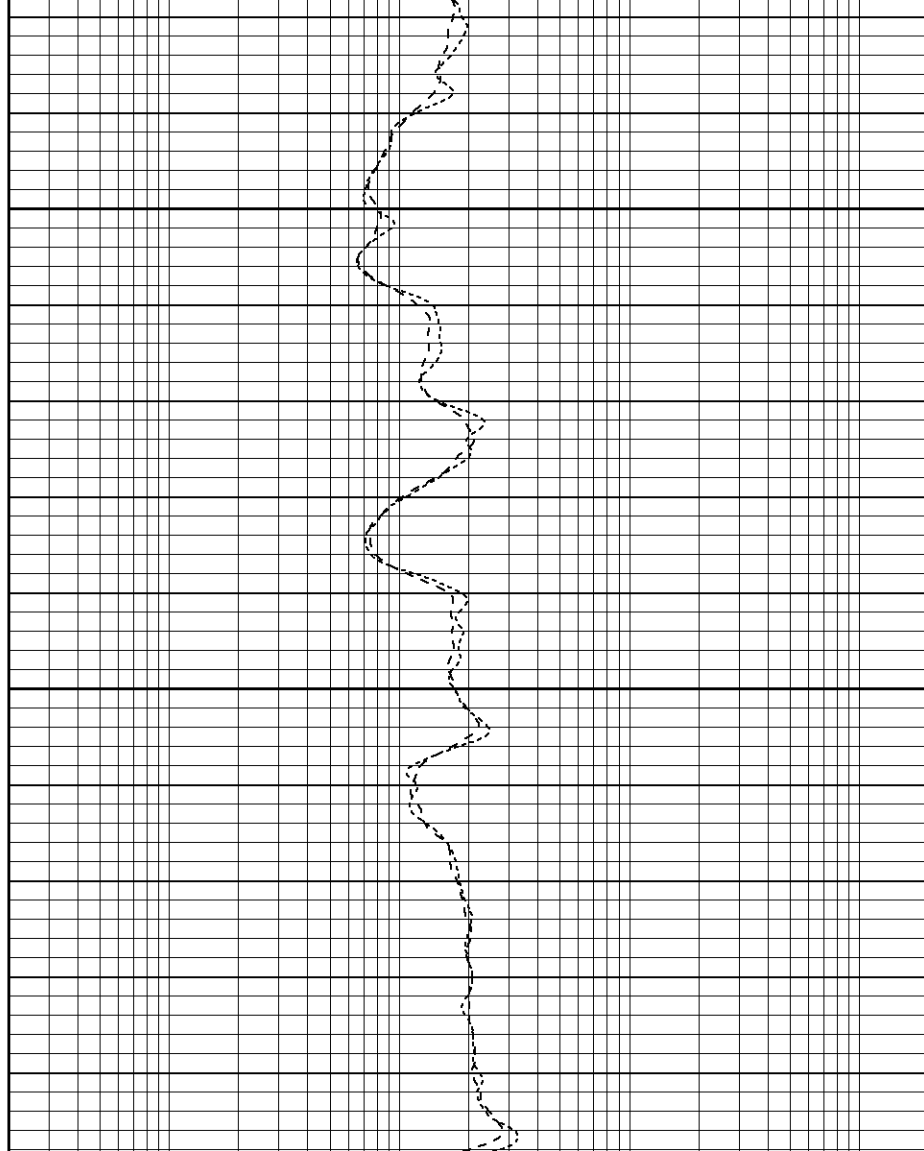
1000

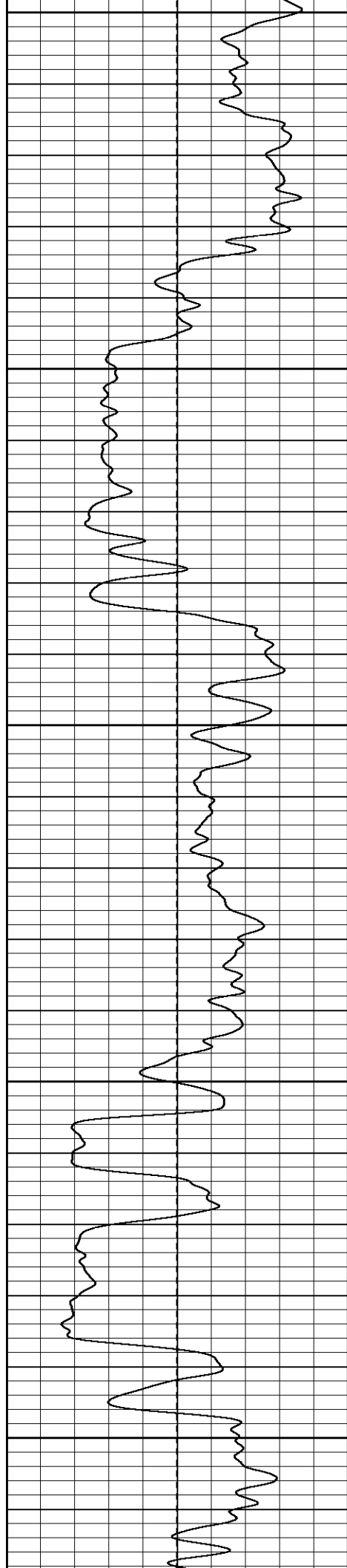




1050

1100





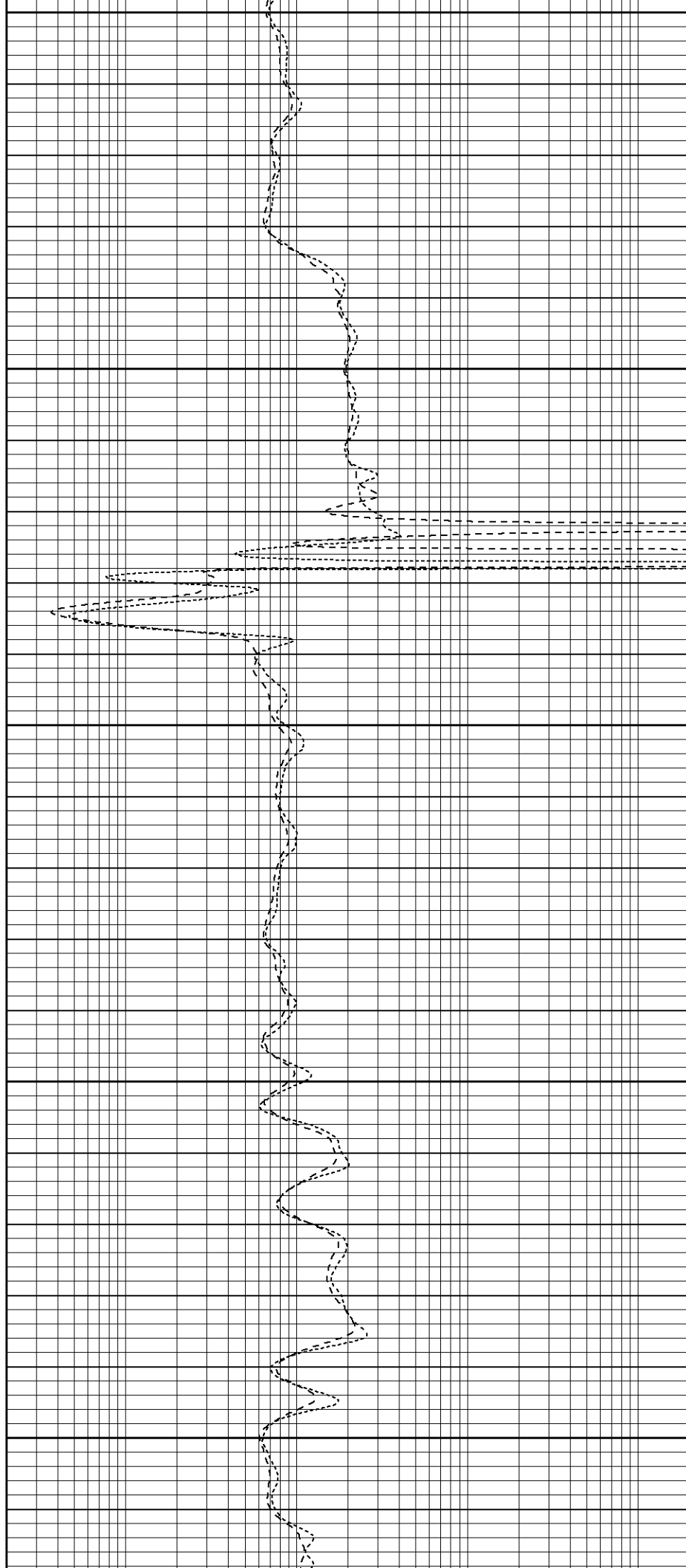
1250

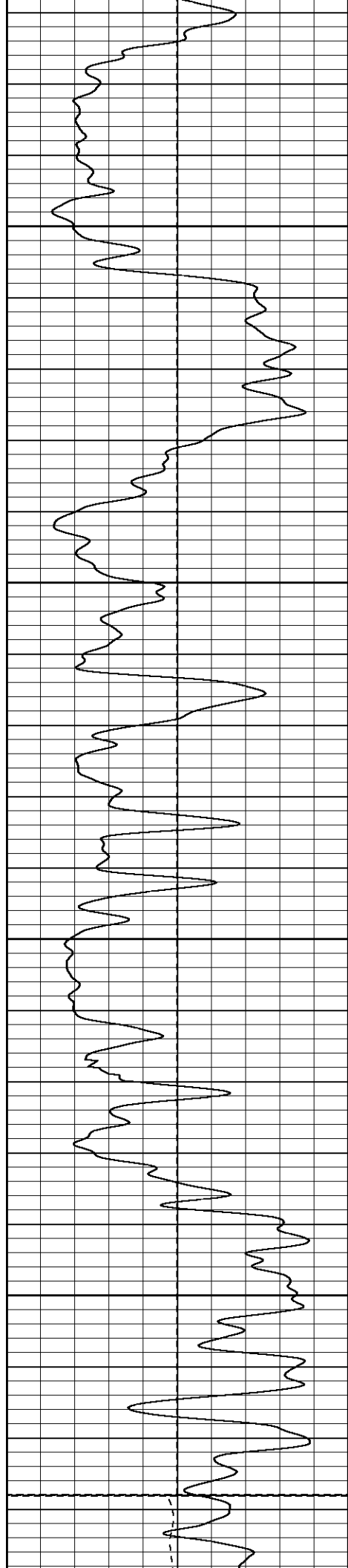
1300

1350

1400

1450





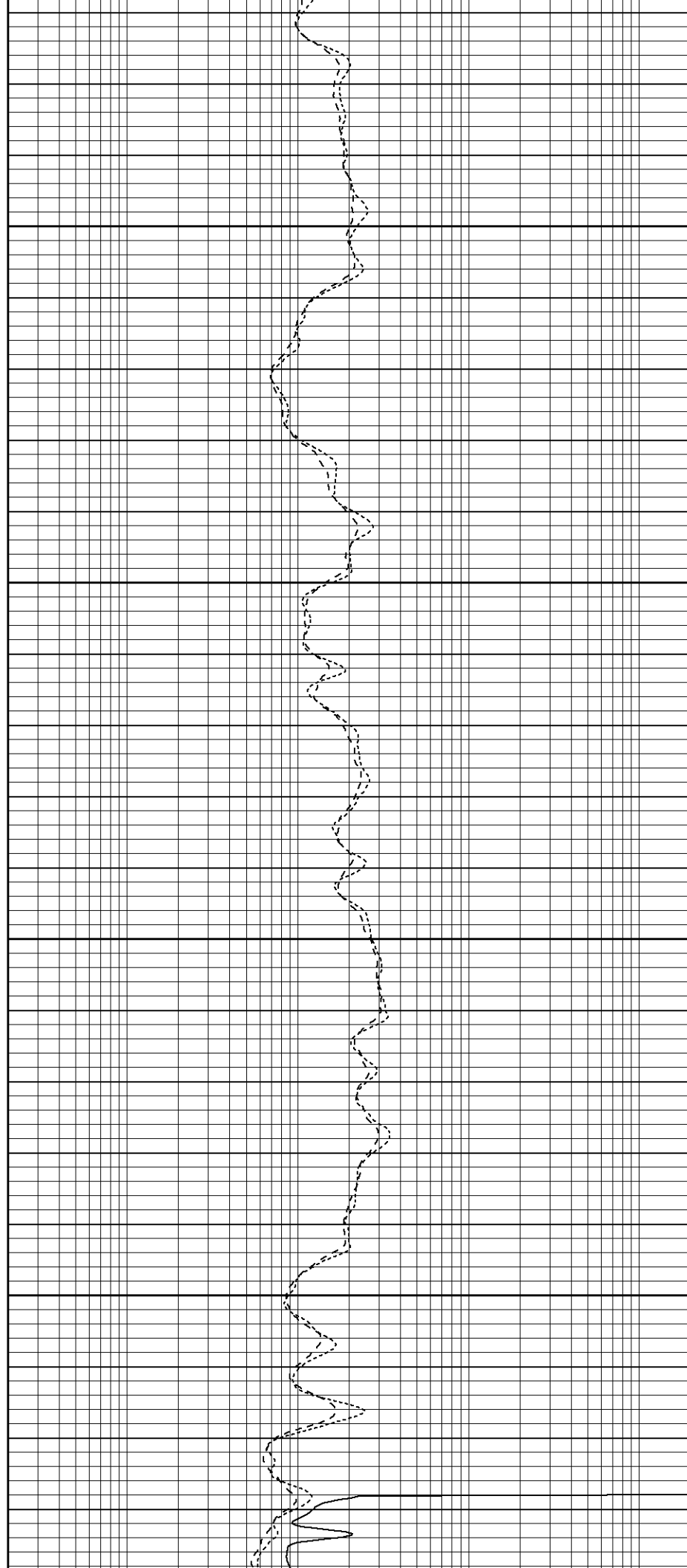
1500

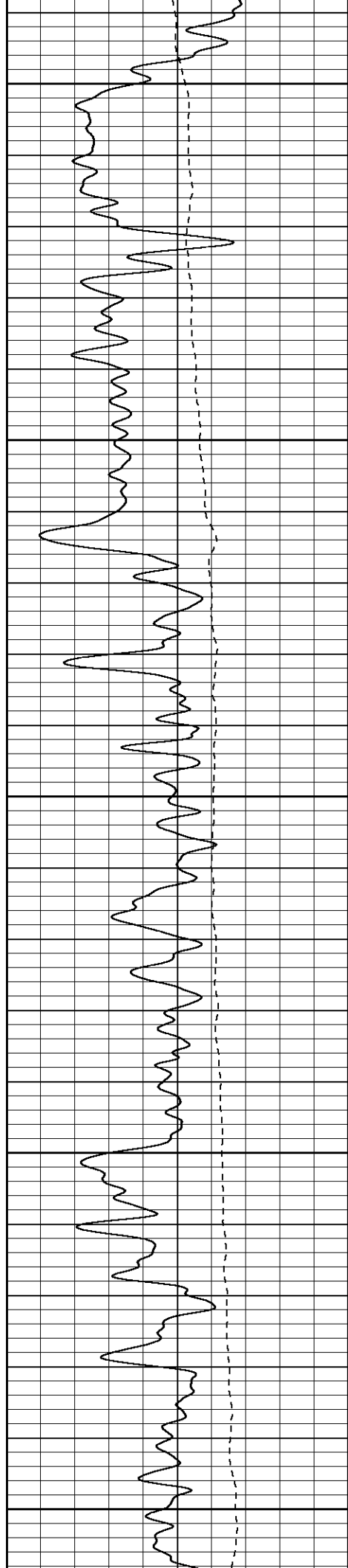
1550

1600

1650

Fluid Level





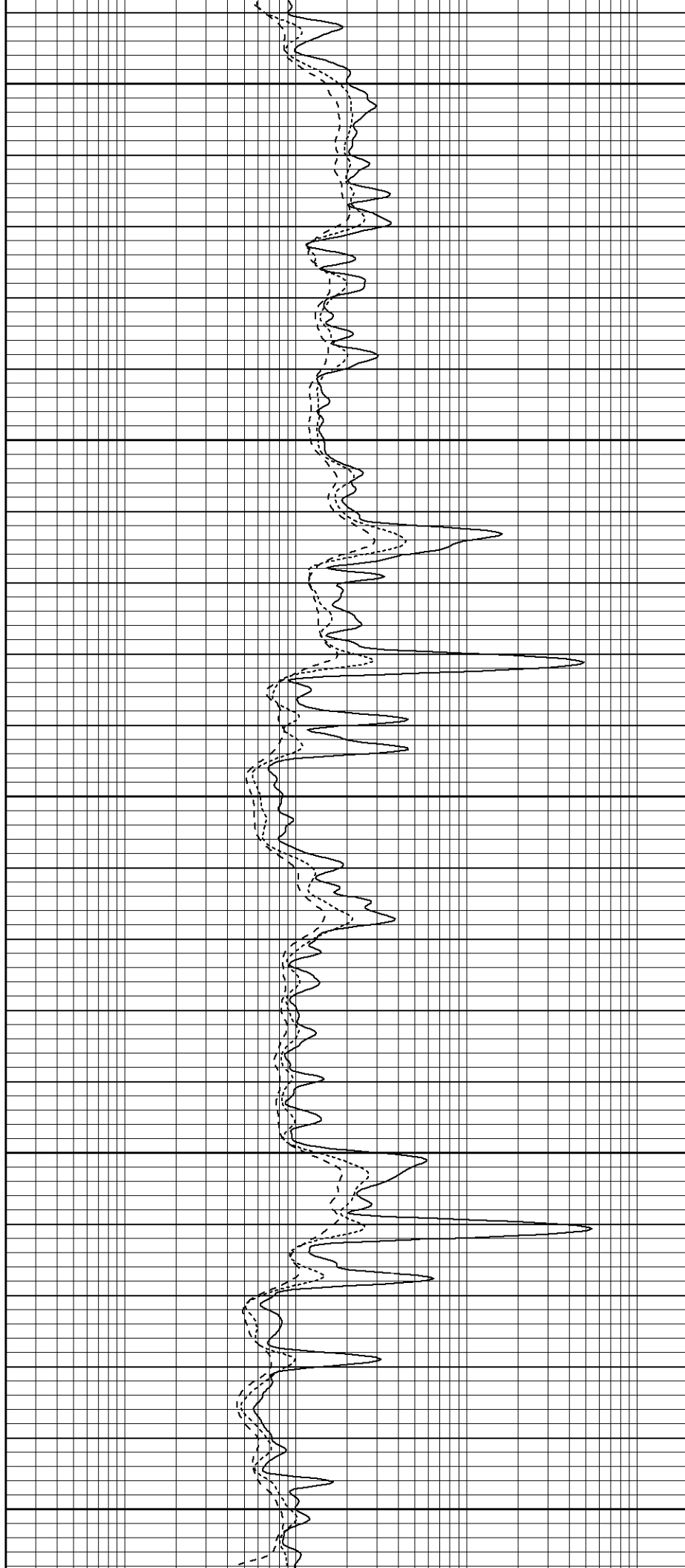
1700

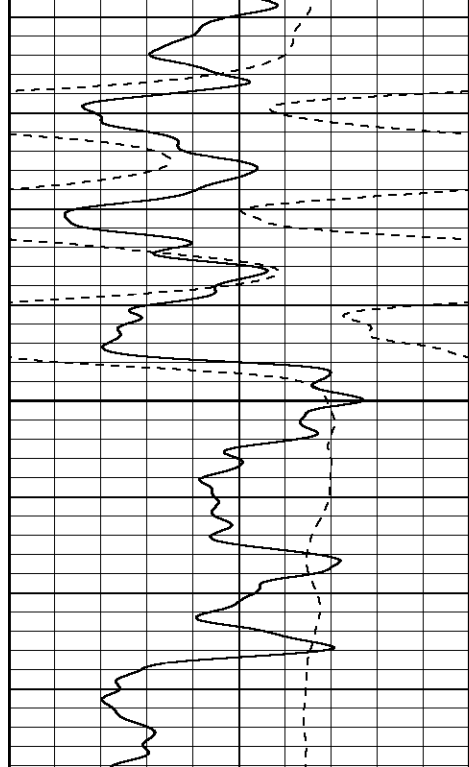
1750

1800

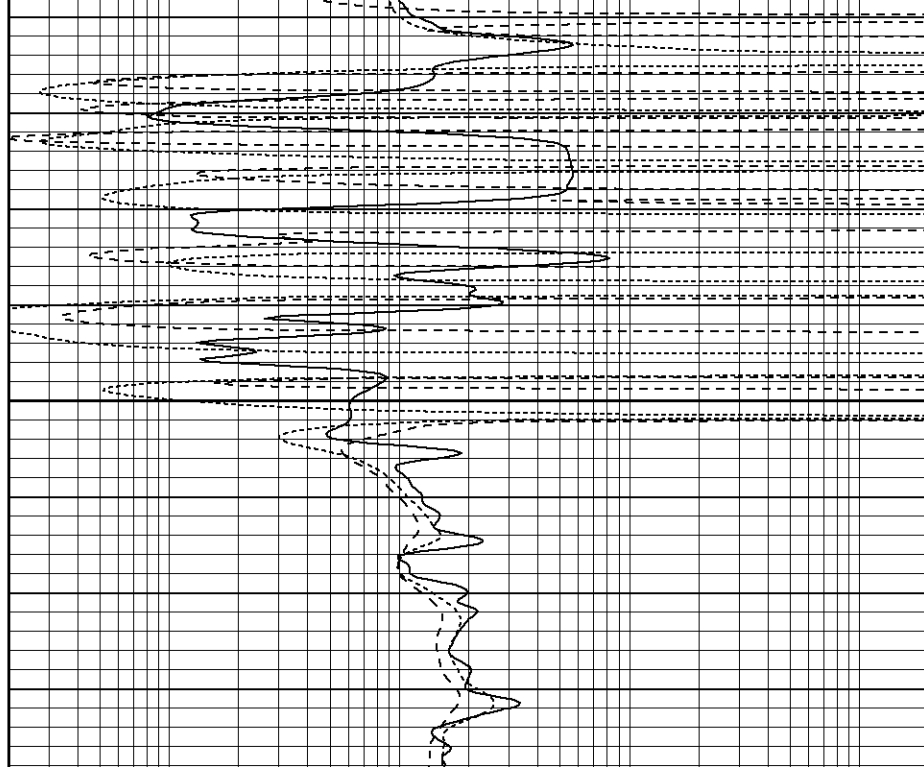
1850

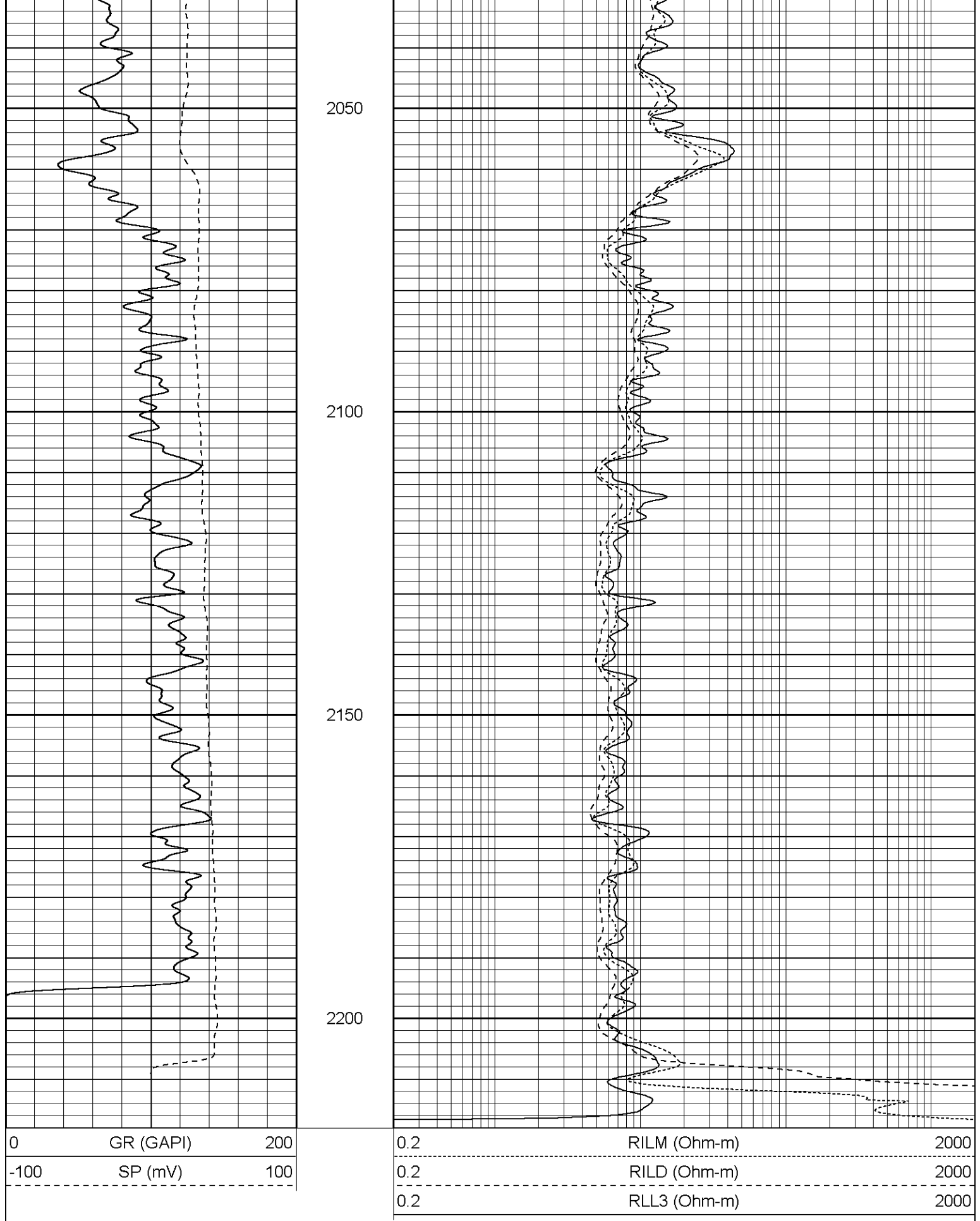
1900





1950





Dual Induction Calibration Report

Serial-Model: 5375-G
Surface Cal Performed: Mon Jun 19 08:21:28 2006

Surface Calibration

Readings				References			Results	
Loop:	Air	Loop		Air	Loop		m	b
Deep	0.012	0.632	V	0.000	500.000	mmho-m	806.768	-9.661
Medium	0.016	0.753	V	0.000	550.000	mmho-m	746.164	-12.032
Internal:	Zero	Cal		Zero	Cal		m	b
Deep	0.014	0.631	V	0.000	500.000	mmho-m	809.790	-11.230
Medium	0.017	0.753	V	0.000	550.000	mmho-m	746.752	-12.516

Downhole Calibration

Readings				References			Results	
Internal:	Zero	Cal		Zero	Cal		m	b
Deep	0.409	500.729	mmho-m	1.526	499.660	mmho-m	0.996	1.120
Medium	-0.000	552.341	mmho-m	0.474	550.041	mmho-m	0.995	0.474
Shallow	2.510	0.023	V	500.000	2.000	Ohm-m	150.000	-2.000

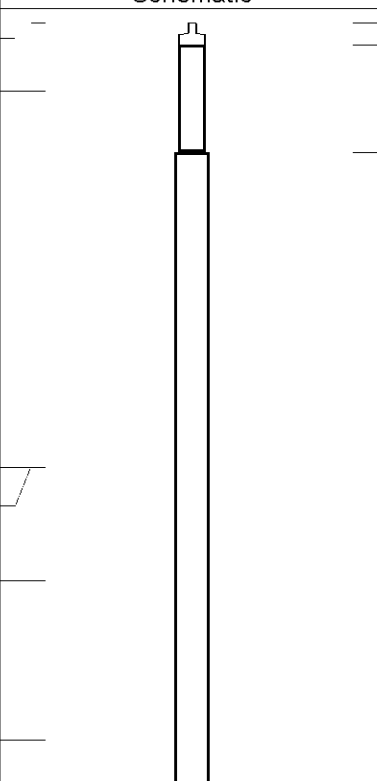
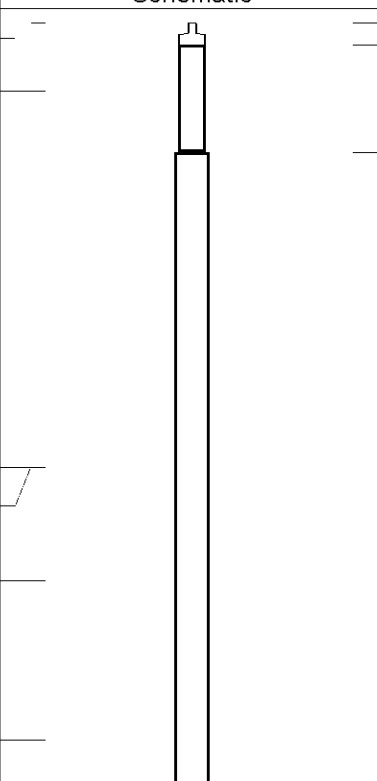
Gamma Ray Calibration Report

Serial Number: 2001
 Tool Model: OH
 Performed: Tue Jul 04 08:55:06 2006

 Calibrator Value: 1.0 GAPI

 Background Reading: 0.0 cps
 Calibrator Reading: 1.0 cps

 Sensitivity: 0.1800 GAPI/cps

Sensor	Offset (ft)	Schematic	Description	Len (ft)	OD (in)	Wt (lb)
CHD	25.08		None	0.75	1.50	5.00
GR	22.83		GR-OH (2001) PROBE	3.50	3.25	40.00
CILD SP	10.60 10.60		DIL-G (5375) Gearhart	20.83	4.00	345.00
CILM	6.89					
RLL3	1.70					

Dataset:	/field/well/run1/_plots_/_jobs_/dil
Total Length:	25.08 ft
Total Weight:	390.00 lb
O.D.	4.00 in