

Patterson

**CEMENT BOND
GAMMA RAY**

CompanyXTO Energy Inc.		Company XTO Energy Inc.	
Well	Hill Ranch 16-01	Well	Hill Ranch 16-01
Field	Purgatorie River	Field	Purgatorie River
County	Las Animas	County	Las Animas
State	CO	State	CO
Location:		API # : 05 071 08368	Other Services
SEC 16 TWP 35S RGE 67W		Elevation	
Permanent Datum	Ground Level	Elevation	8151'
Log Measured From	Ground Level		K.B. 8151'
Drilling Measured From	Ground Level		D.F. 8151'
			G.L. 8151'
Date	1/10/06		
Run Number	three		
Depth Driller	2700'		
Depth Logger	1995'		
Bottom Logged Interval	1991'		
Top Log Interval	Surf.		
Open Hole Size	7 7/8"		
Type Fluid	Water		
Density / Viscosity	///		
Max. Recorded Temp.	133F		
Estimated Cement Top	Surf.		
Time Well Ready	11:30		
Time Logger on Bottom	12:30		
Equipment Number	T244		
Location	Trinidad		
Recorded By	Worley		
Witnessed By	Mr. Moff		
Borehole Record		Tubing Record	
Run Number	Bit	From	To
		Size	Weight
			From
			To
Casing Record	Size	Wgt/Ft	Top
Surface String	8 5/8"		00
Prot. String			225'
Production String	5 1/2"		00
Liner			NA

<<< Fold Here >>>

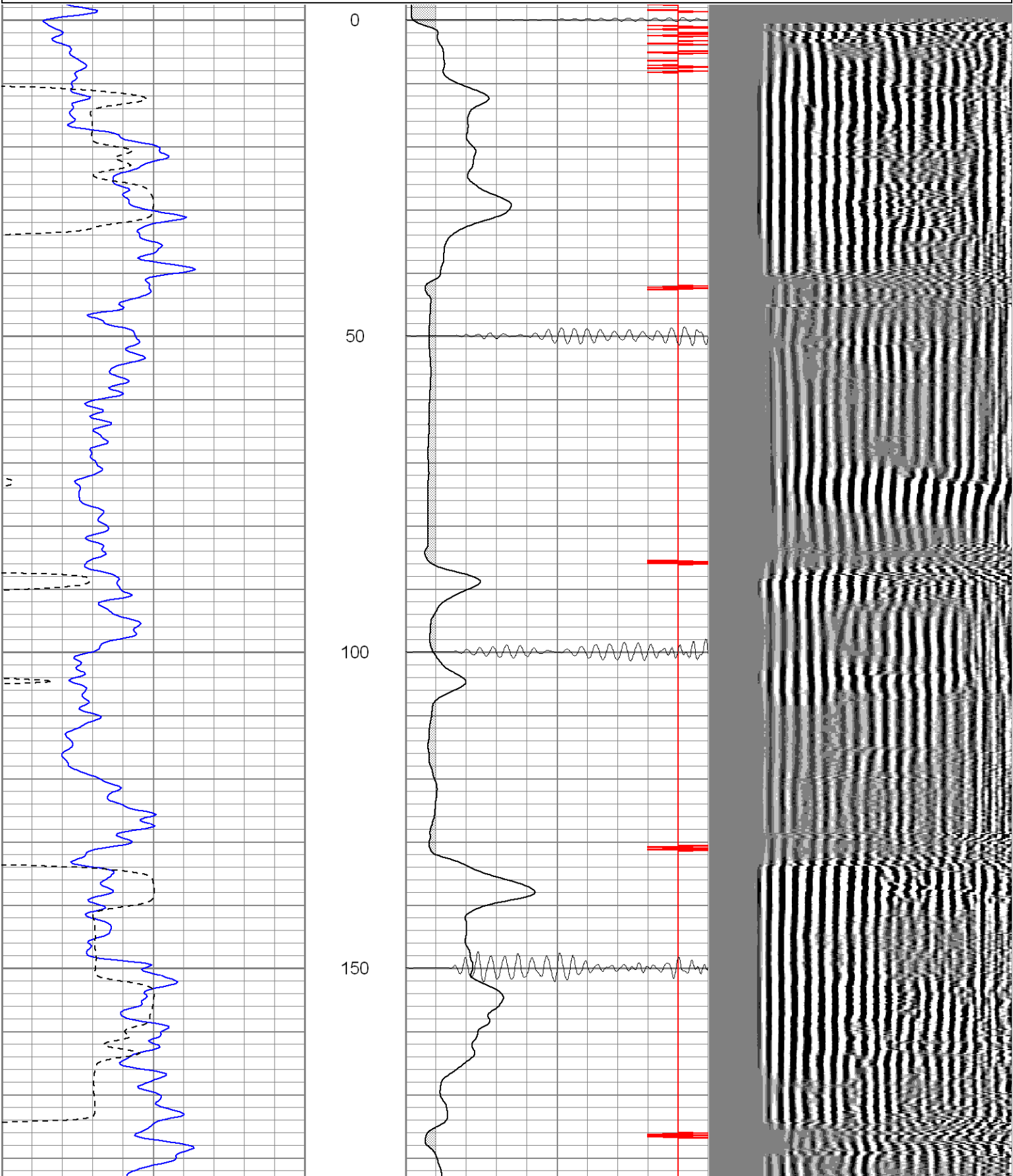
All interpretations are opinions based on inferences from electrical or other measurements and we cannot and do not guarantee the accuracy or correctness of any interpretation, and we shall not, except in the case of gross or willful negligence on our part, be liable or responsible for any loss, costs, damages, or expenses incurred or sustained by anyone resulting from any interpretation made by any of our officers, agents or employees. These interpretations are also subject to our general terms and conditions set out in our current Price Schedule.

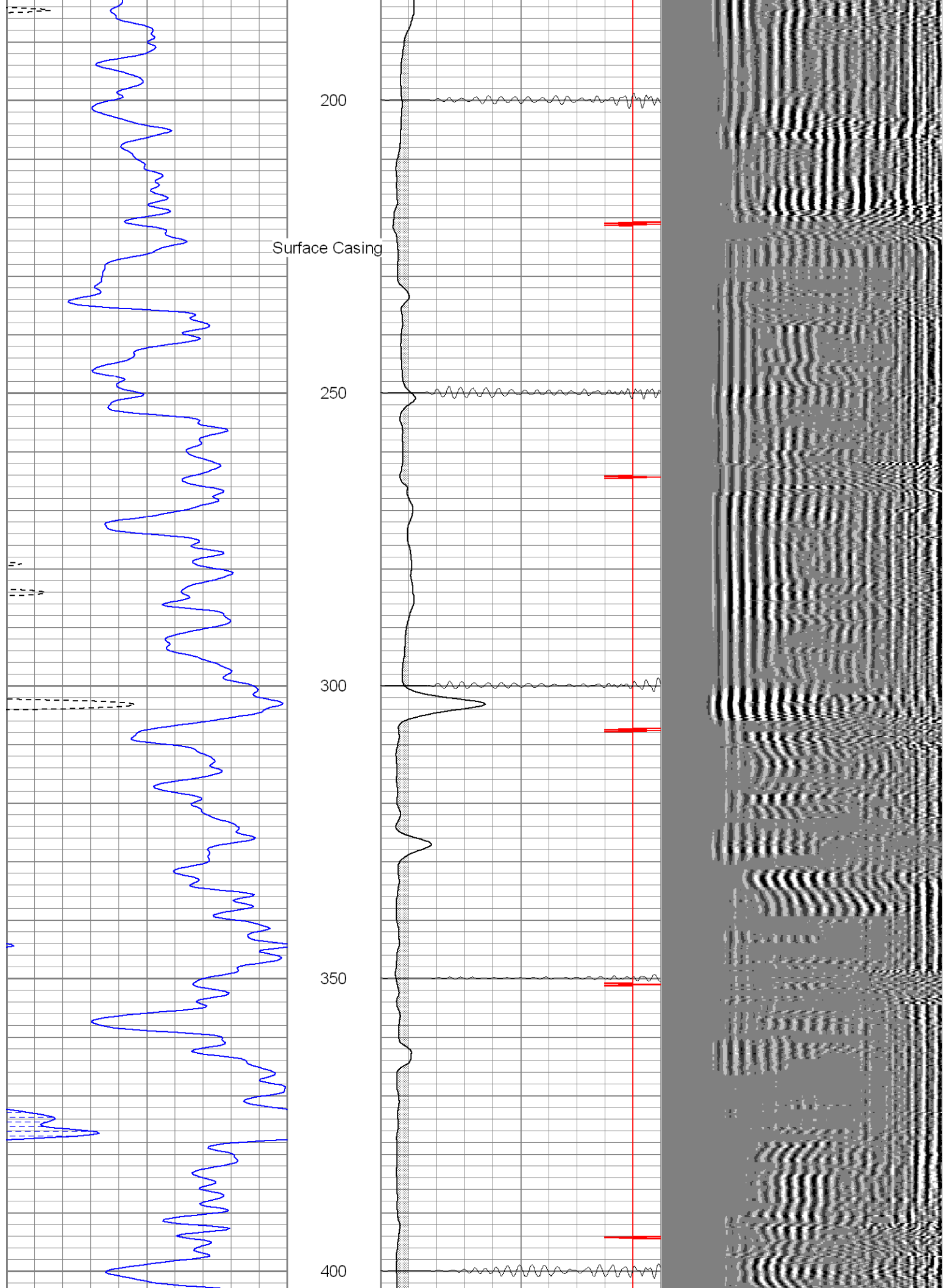
Comments

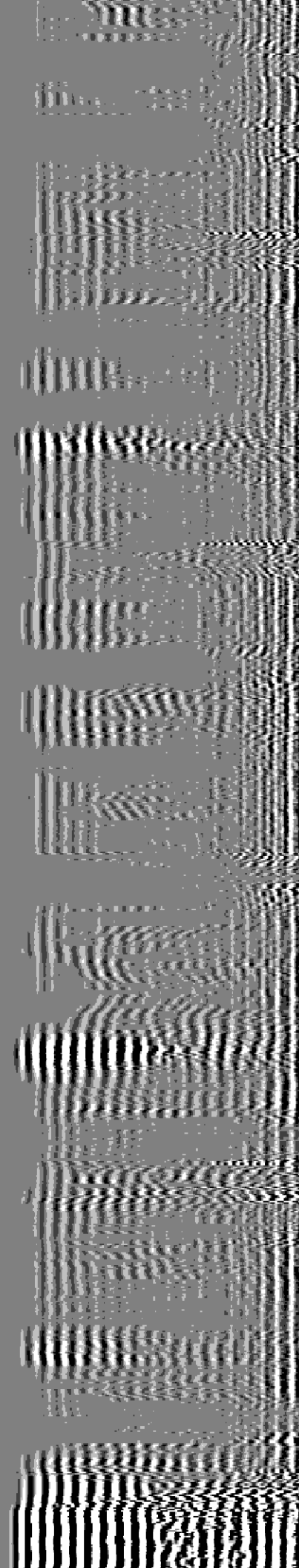
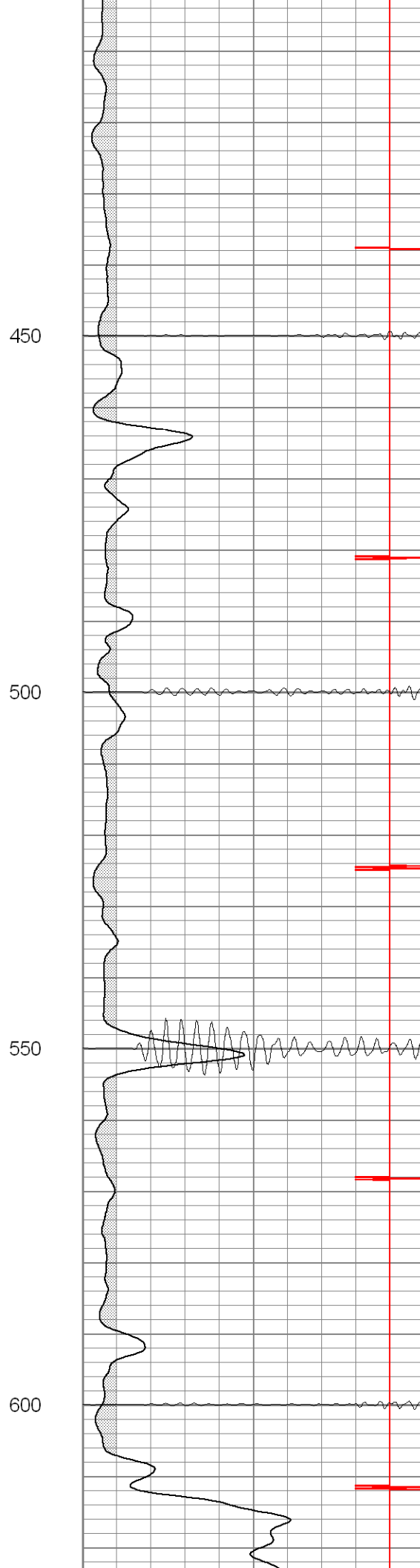
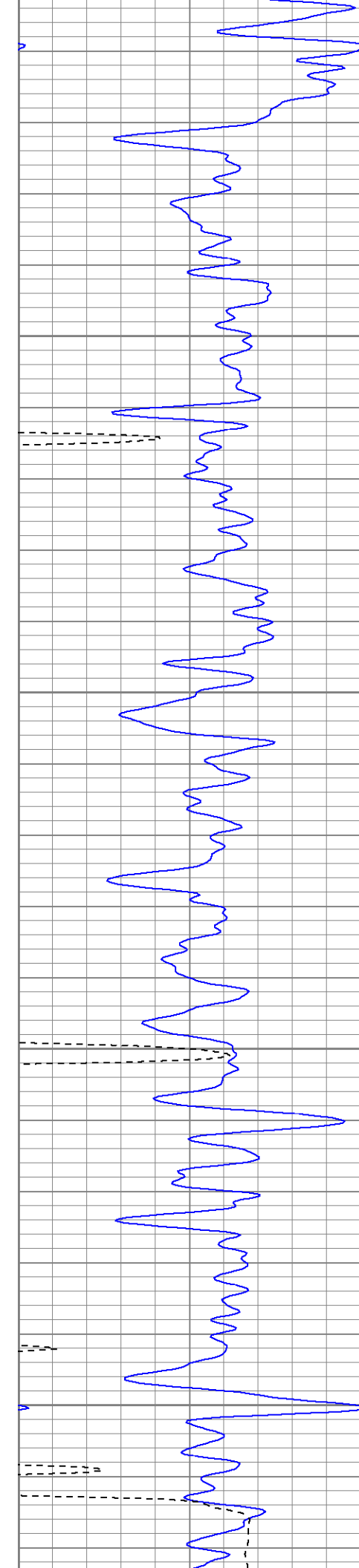
Dead Horse Canyon, Left Over Cattle Guard, Stay Left Over 2nd Cattle Guard, Second Left To Location.

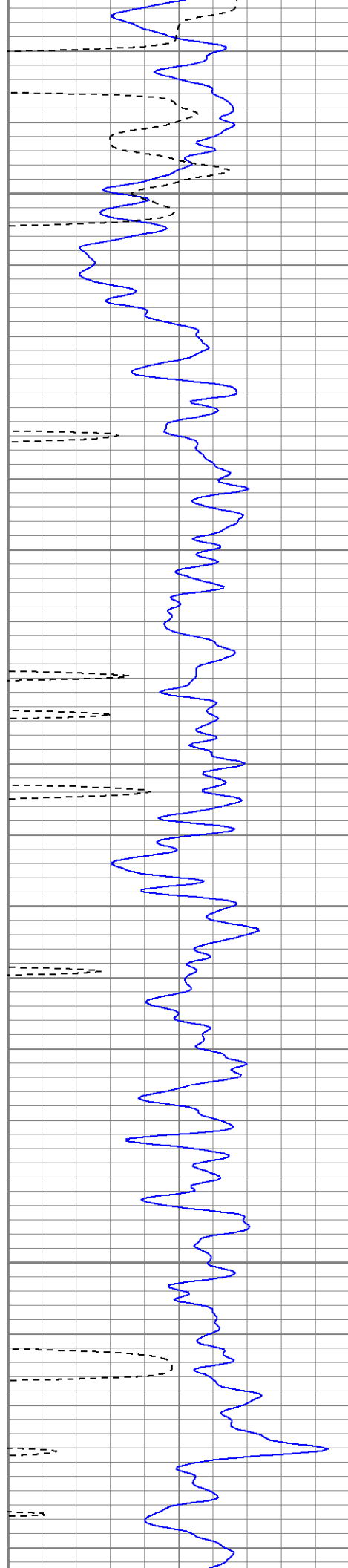
Database File: hr16-01b011006.db
Dataset Pathname: pass2
Presentation Format: cblrt
Dataset Creation: Tue Jan 10 12:41:47 2006 by Log Warrior 7.0 STD Cas
Charted by: Depth in Feet scaled 1:240

0	GR (GAPI)	200	0	AMP3 (mV)	100	200	Variable Density	1200
400	TT3 (usec)	200	18	CCL	-2			
			200	CBL5	1200			







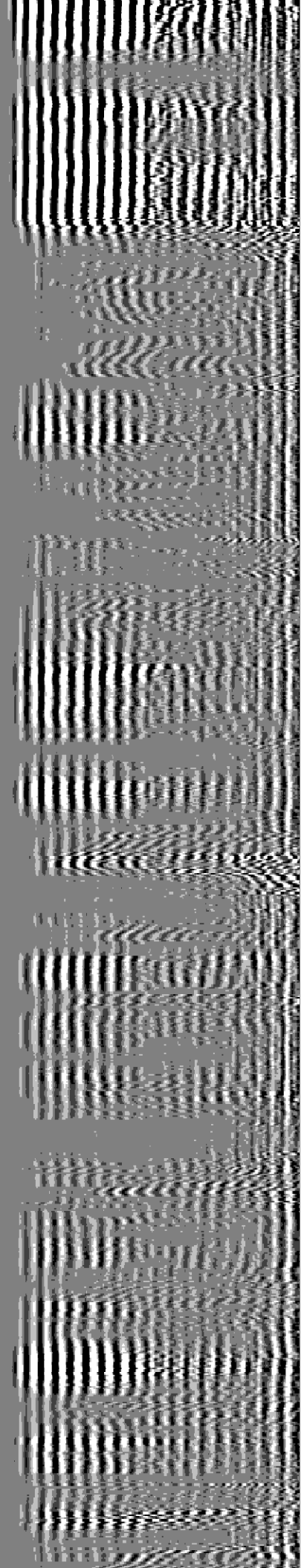
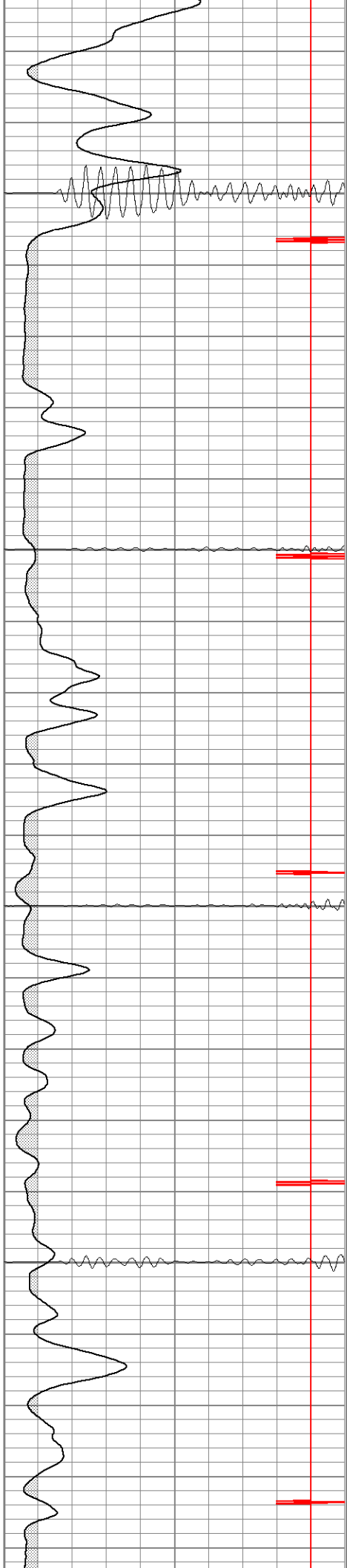


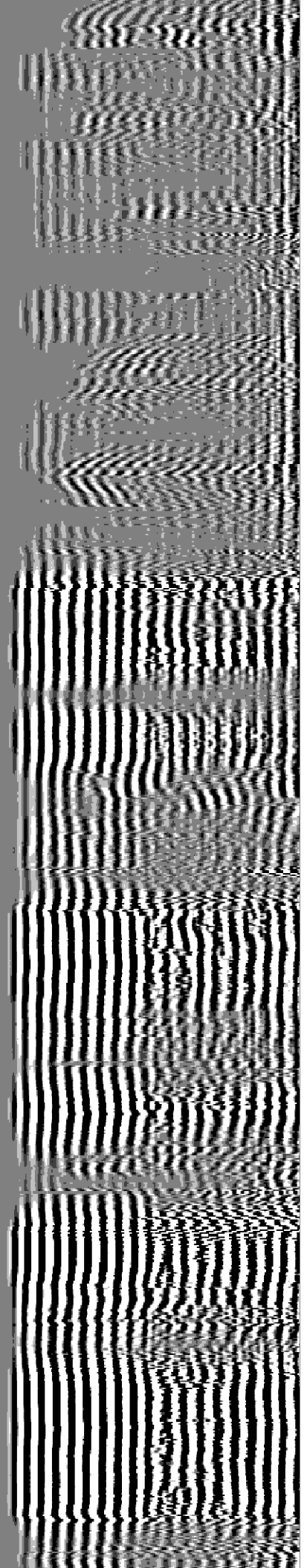
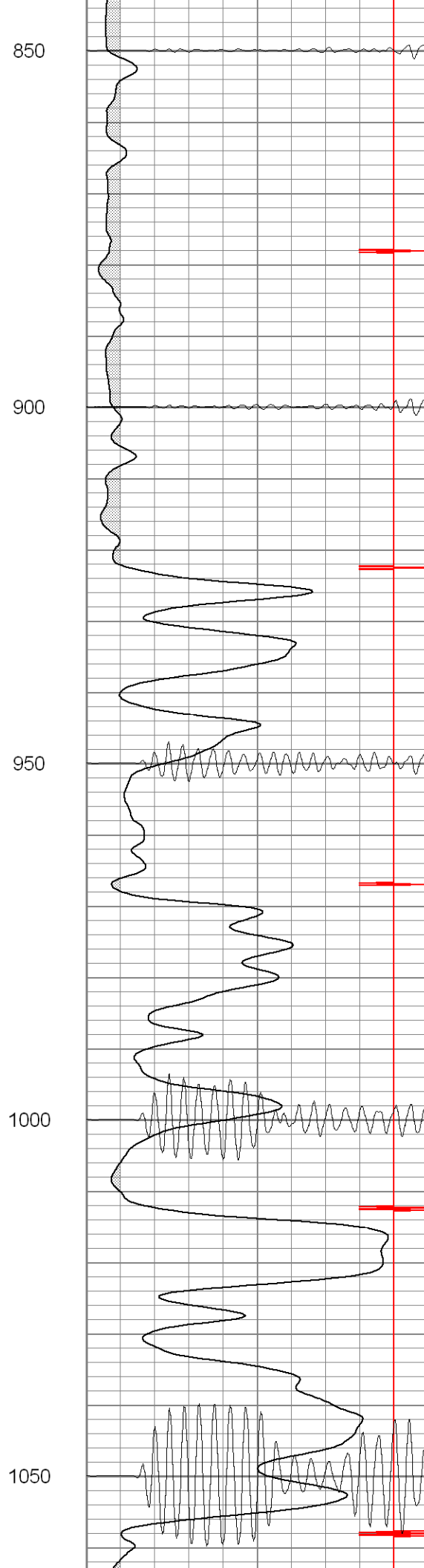
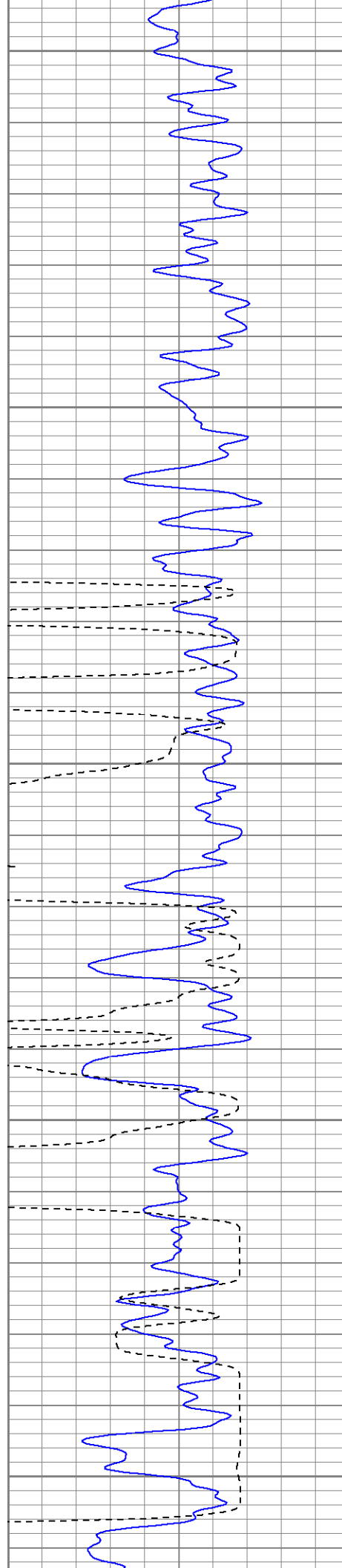
650

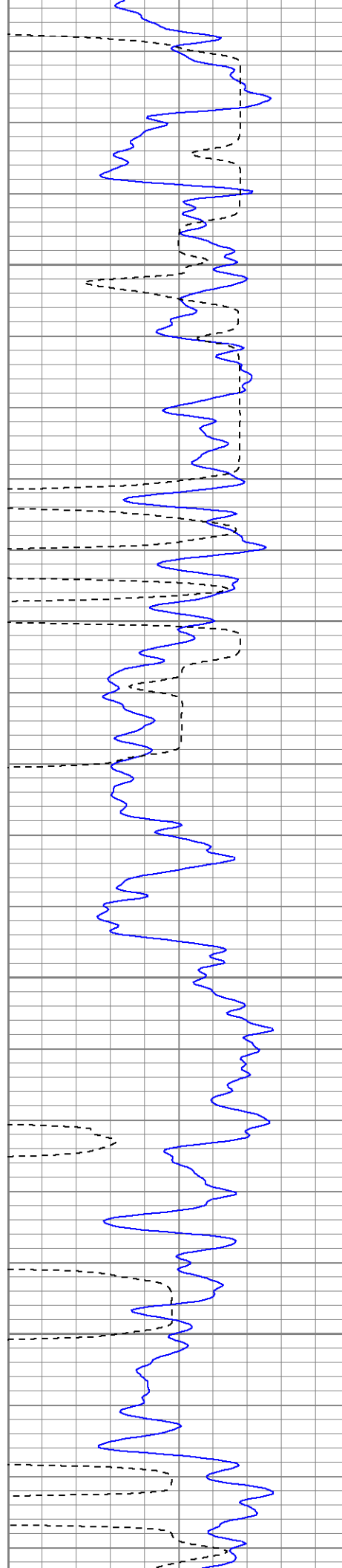
700

750

800





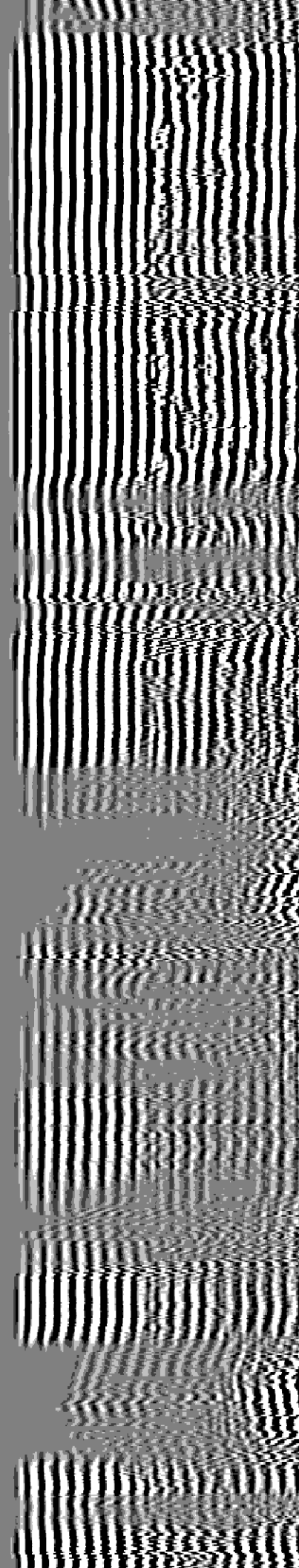
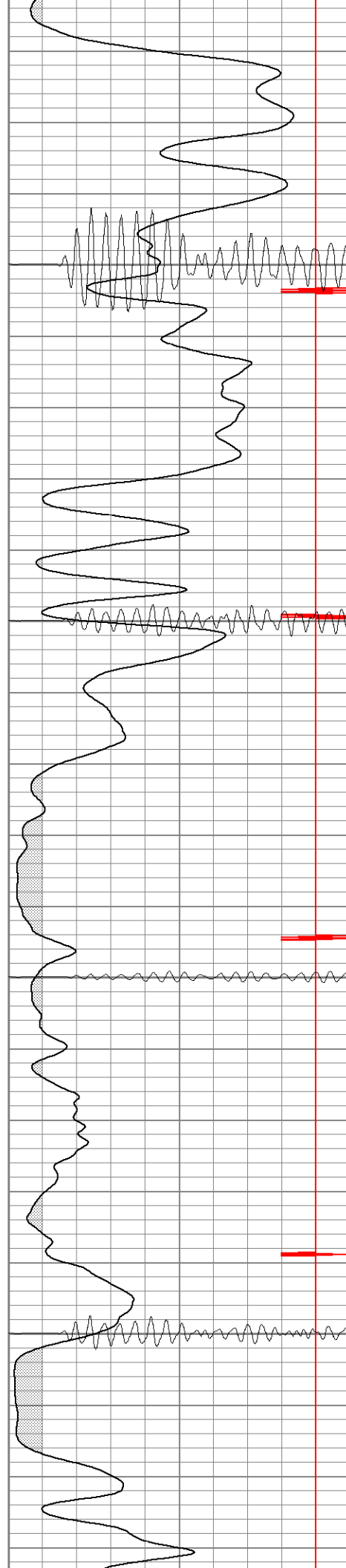


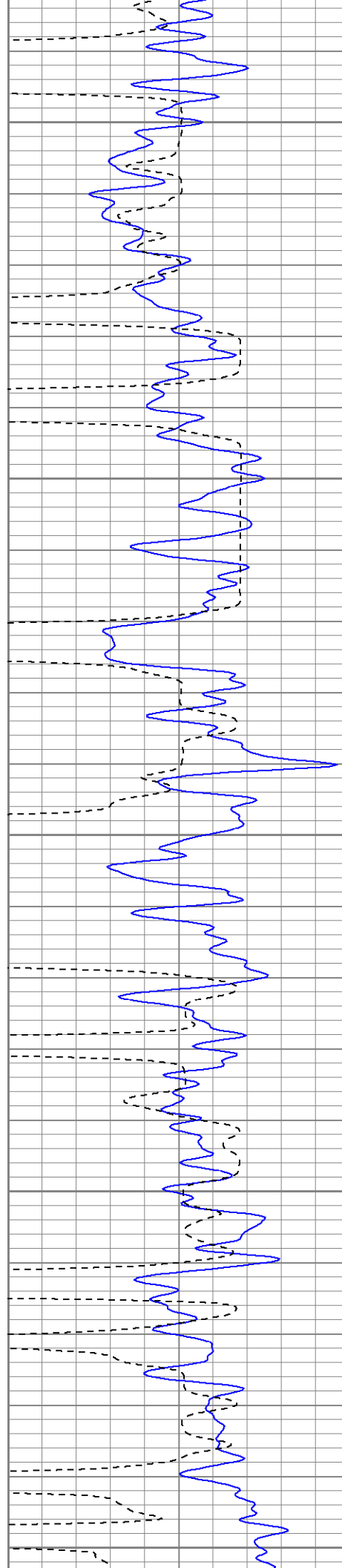
1100

1150

1200

1250





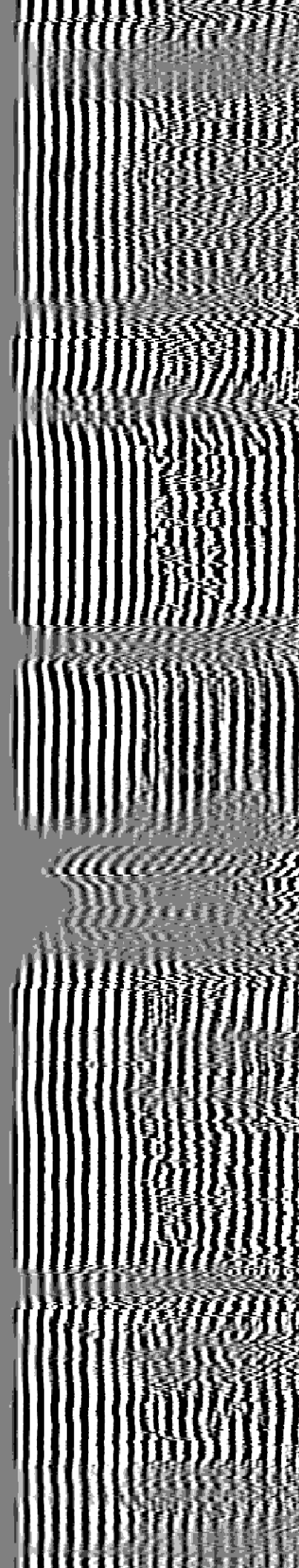
1300

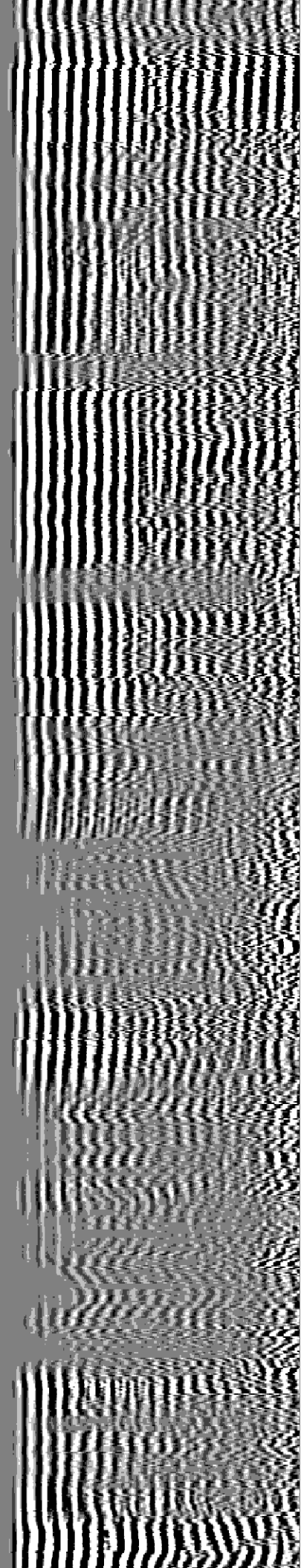
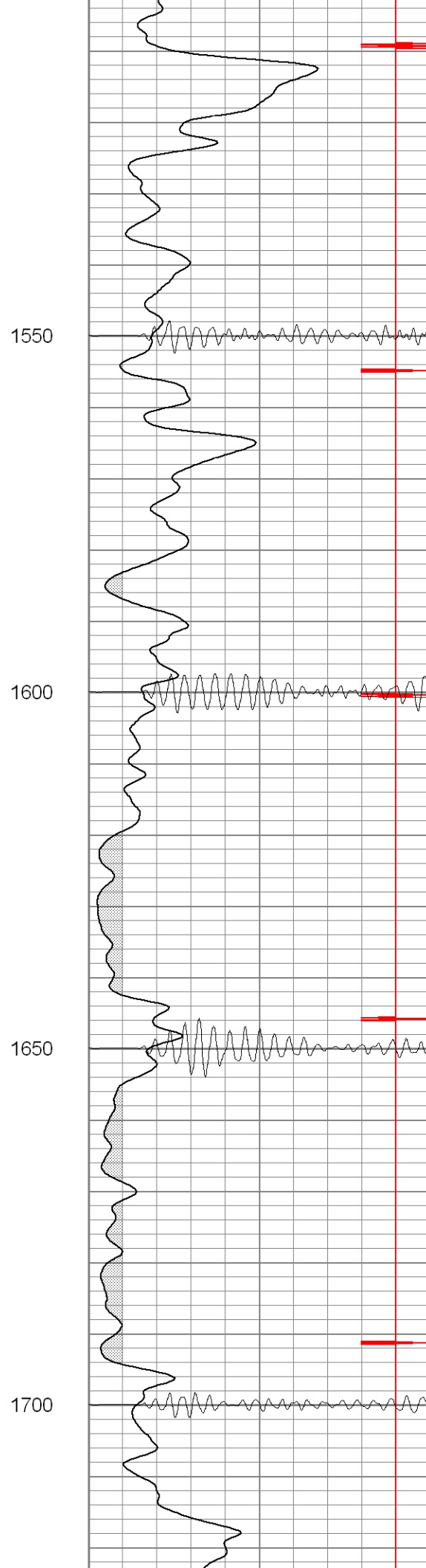
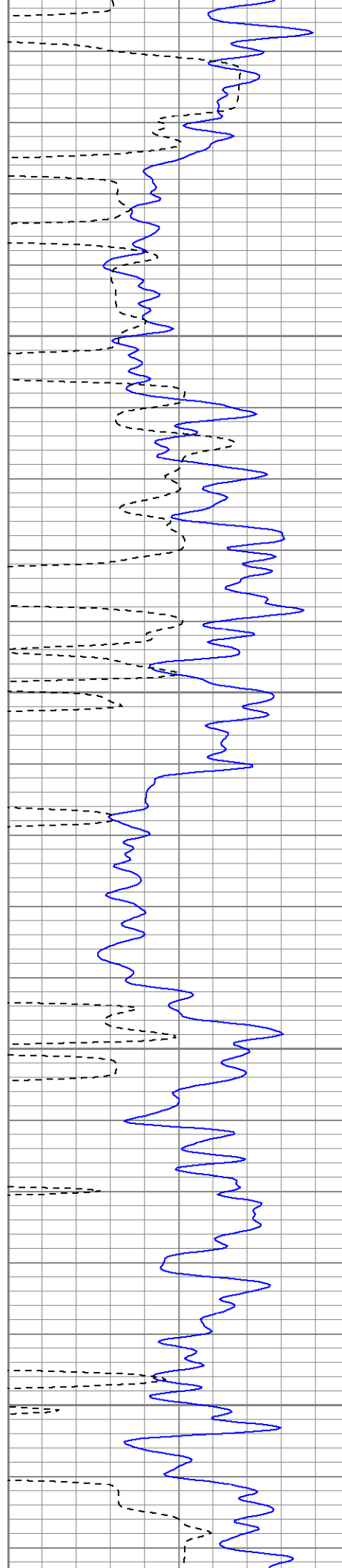
1350

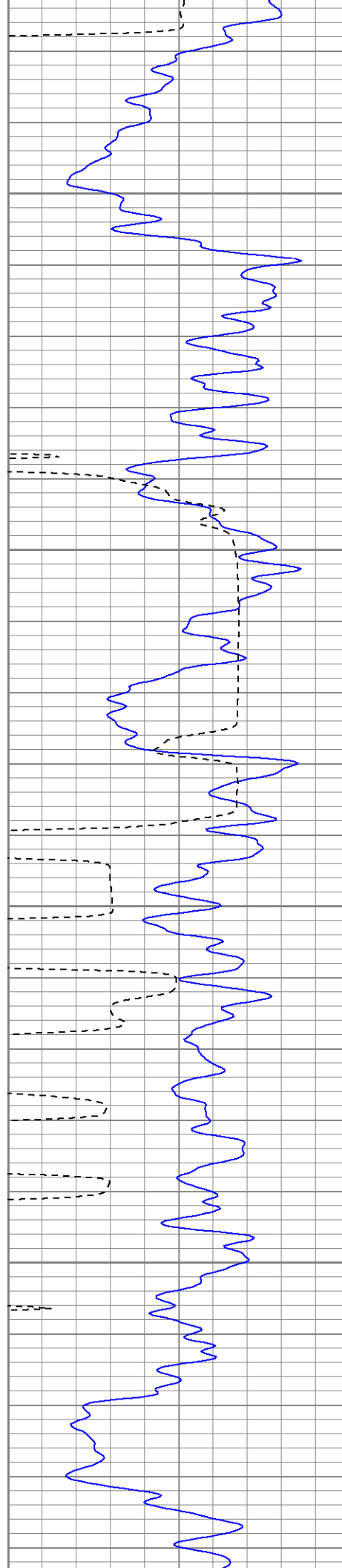
1400

1450

1500





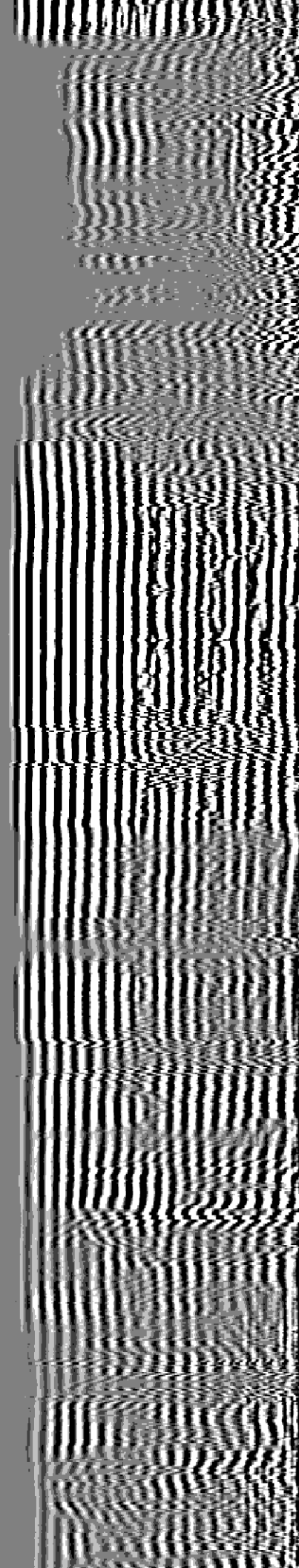
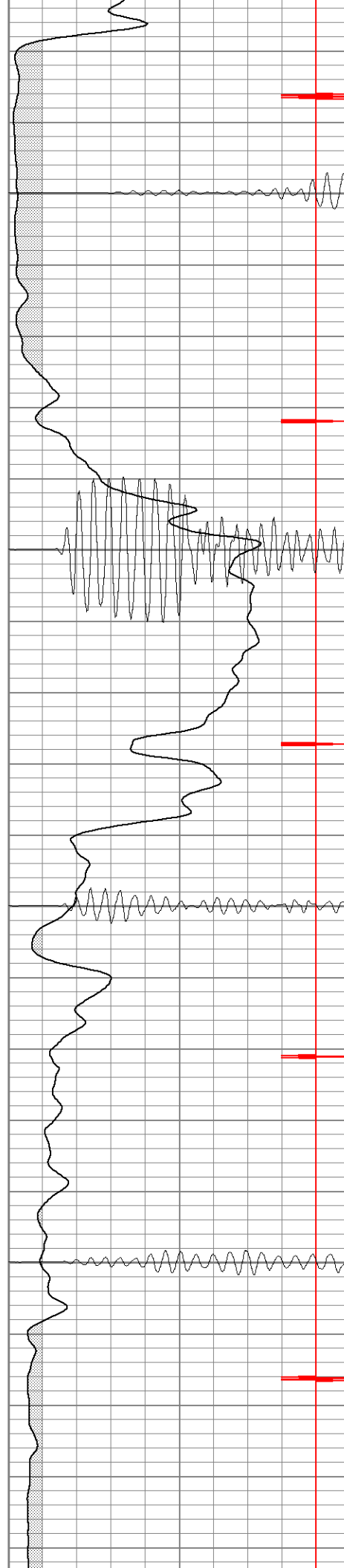


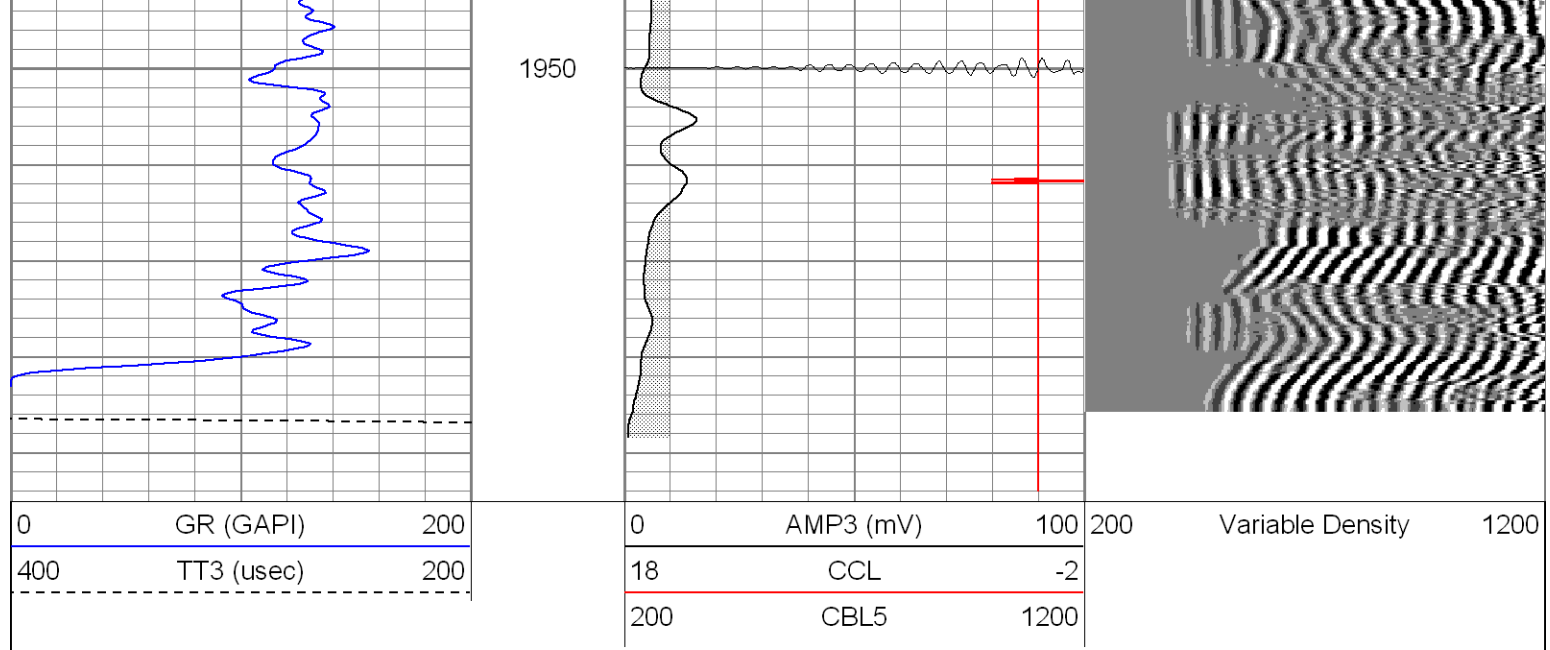
1750

1800

1850

1900

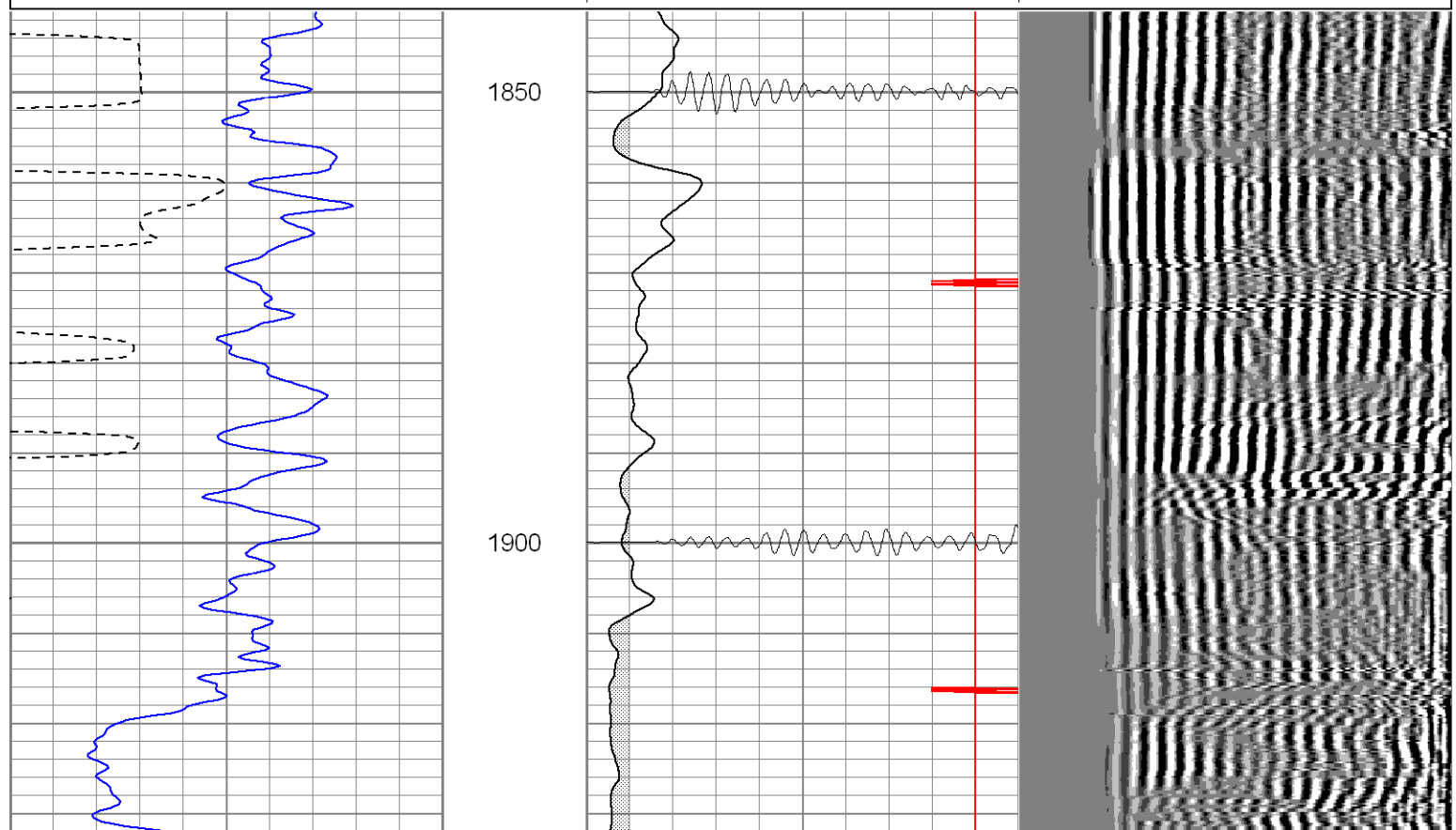
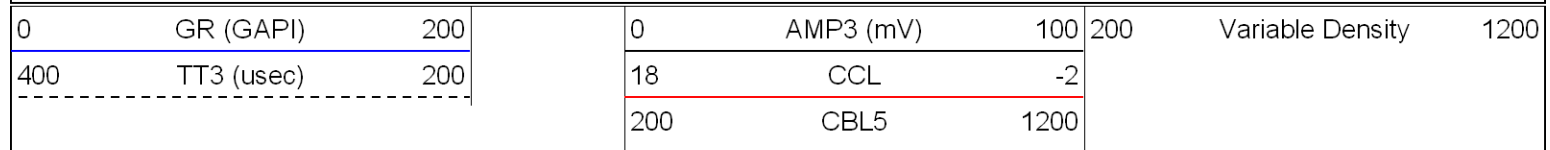


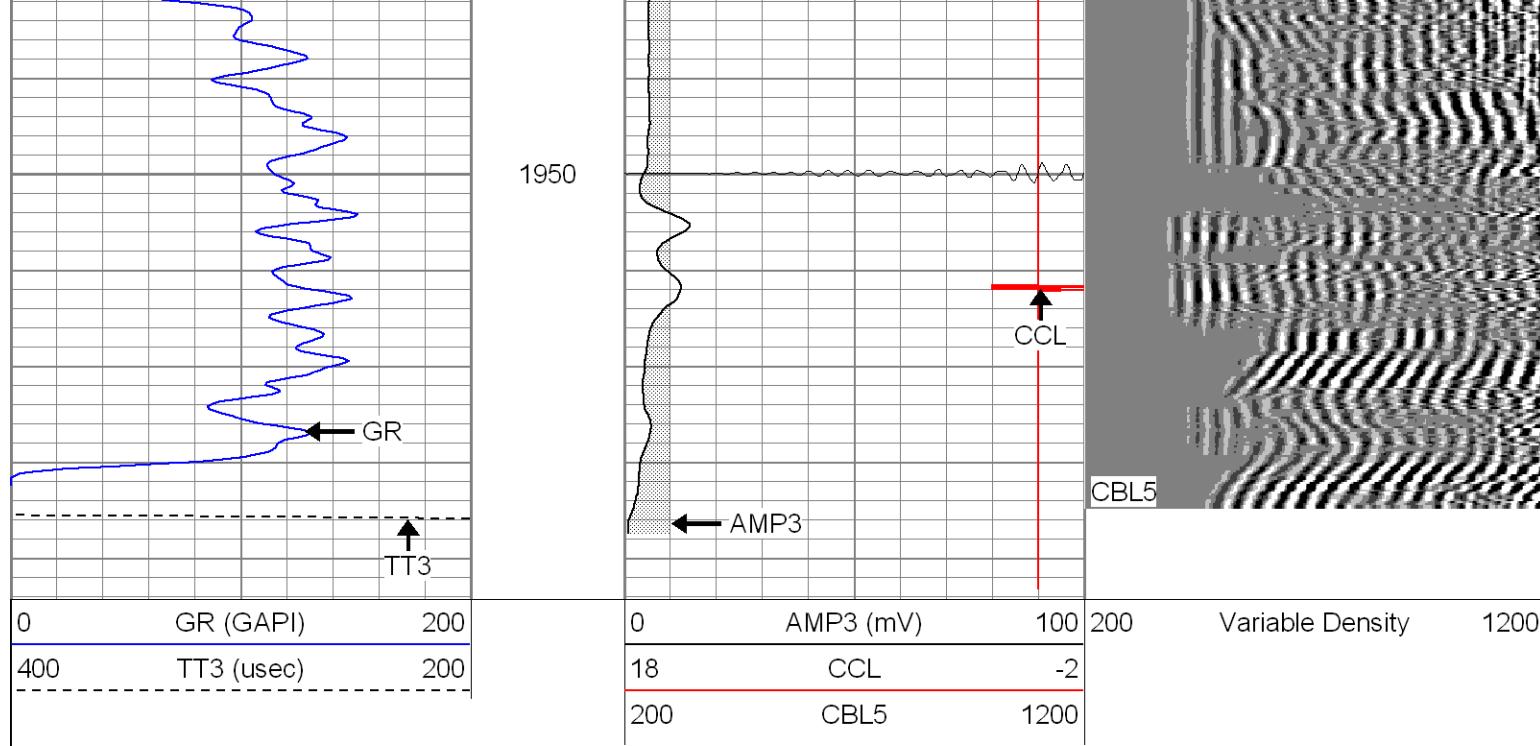


Patterson

Repeat Section

Database File: hr16-01b011006.db
 Dataset Pathname: pass1
 Presentation Format: cblrt
 Dataset Creation: Tue Jan 10 12:36:51 2006 by Log Warrior 7.0 STD Cas
 Charted by: Depth in Feet scaled 1:240





Cement Bond Log Calibration Report

Serial Number:	Titan5		
Tool Model:	2		
Performed:	Tue Jan 10 12:31:42 2006		
Depth:	2158.27	ft	
Casing Diameter:	5.5	in	
	3' Spacing	5' Spacing	
Signal Zero:	0	0	mV
Calibrated Amplitude:	85	85	mV
Reading at Signal Zero:	-0.01	0	V
Reading in Free Pipe:	1	0.9	V
Gain:	84.1584	94.4444	
Offset:	0.841584	0	

Gamma Ray Calibration Report

Serial Number:	Titan5	
Tool Model:	T2	
Performed:	Tue Jan 10 09:18:37 2006	
Calibrator Value:	1.0	GAPI
Background Reading:	0.0	cps
Calibrator Reading:	1.0	cps
Sensitivity:	1.2000	GAPI/cps