



SUPERIOR
WELL SERVICES
Black Lick, Pa.
Mercer, Pa.
Wooster, Oh.
Cleveland, Ok.
Trinidad, Co.

CEMENT BOND LOG

Company XTO Energy Inc.
Well Apache Canyon 05-02
Field Purgatorie River
County Las Animas State CO

Location:

API # :

546' FNL & 1492' FEL

Other Services
Pressure
control

SEC 05 TWP 34S RGE 67W

Permanent Datum Ground Level Elevation 7870'
Log Measured From Ground Level
Drilling Measured From Ground Level

Elevation

K.B. -----
D.F. -----
G.L. 7870'

Date 6-21-07

Run Number	One		
Depth Driller	2475'		
Depth Logger	2380'		
Bottom Logged Interval	2378'		
Top Log Interval	Surface		
Open Hole Size	7 7/8		
Type Fluid	Water		
Density / Viscosity	///		
Max. Recorded Temp.	108F		
Estimated Cement Top	910'		
Time Well Ready	ROA		
Time Logger on Bottom	8:45AM		
Equipment Number	T0698		
Location	Trinidad		
Recorded By	J. Sineros		
Witnessed By	Mr. Mike Polley		

Borehole Record			Tubing Record			
Bit	From	To	Size	Weight	From	To

Casing Record	Size	Wgt/Ft	Top	Bottom
Surface String	8 5/8"			495'
Prot. String				
Production String	5.5"			
Liner				

<<< Fold Here >>>

All interpretations are opinions based on inferences from electrical or other measurements and we cannot and do not guarantee the accuracy or correctness of any interpretation, and we shall not, except in the case of gross or willful negligence on our part, be liable or responsible for any loss, costs, damages, or expenses incurred or sustained by anyone resulting from any interpretation made by any of our officers, agents or employees. These interpretations are also subject to our general terms and conditions set out in our current Price Schedule.

Comments

Lower Bosque Entrance, first right to Cherry Canyon, stay left at Y, stay on main road for 4.5 miles turn right , second location.

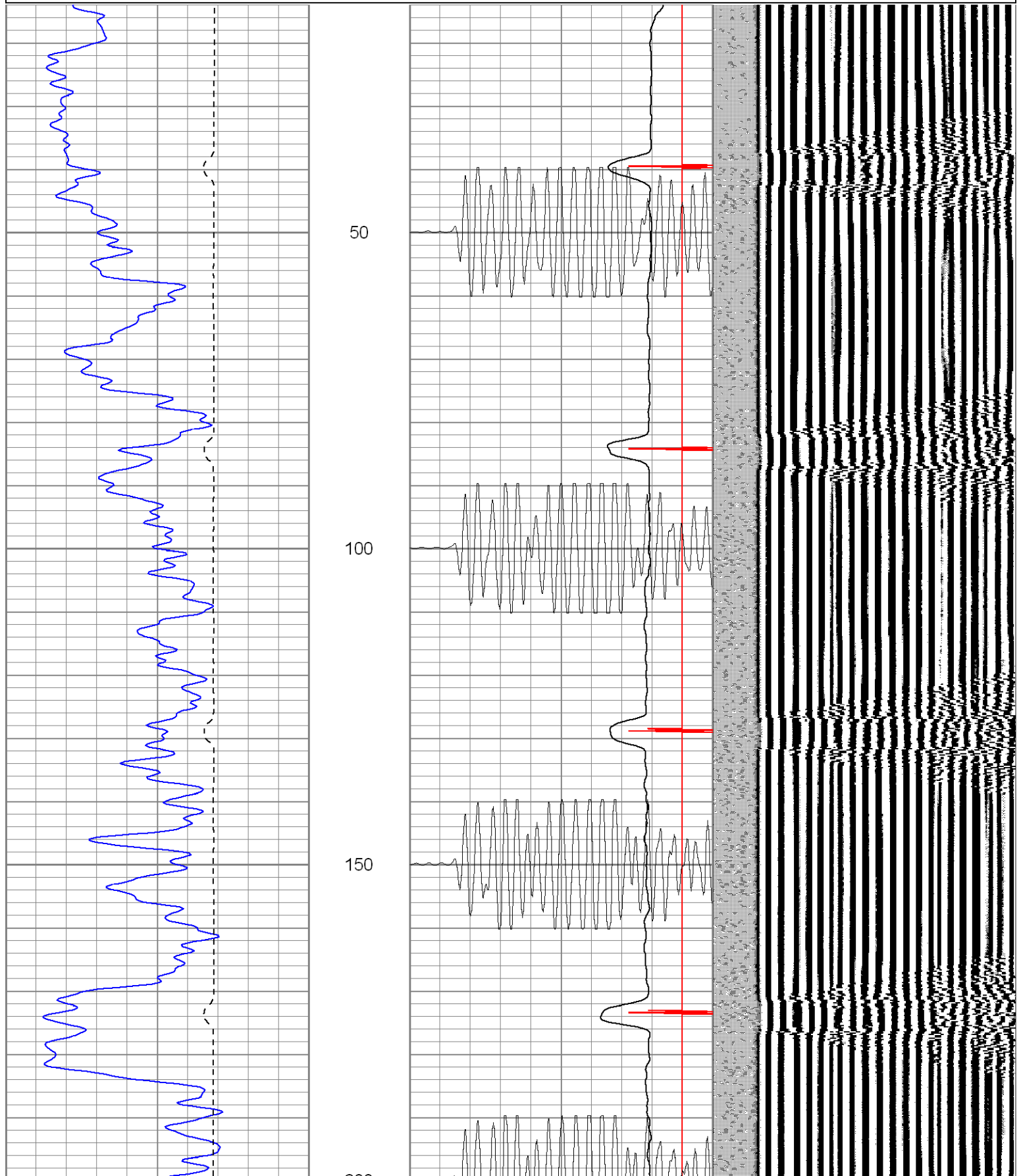


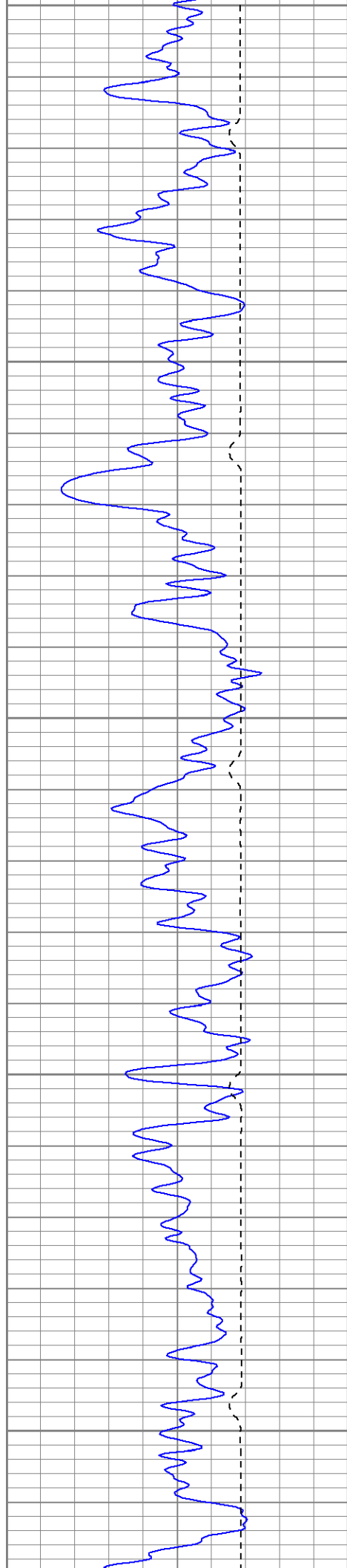
SUPERIOR
Black Lick, Pa.
Mercer, Pa.
Wooster, Oh.
Cleveland, Ok.
Trinidad, Co.

Main Pass (1000PSI)

Database File: ac050262107b.db
Dataset Pathname: pass2
Presentation Format: cblrt
Dataset Creation: Thu Jun 21 11:05:10 2007 by Log Open-Cased 061129
Charted by: Depth in Feet scaled 1:240

0	GR (GAPI)	200	0	AMP3 (mV)	100	200	Variable Density	1200
400	TT3 (usec)	200	18	CCL	-2			
			200	CBL5	1200			





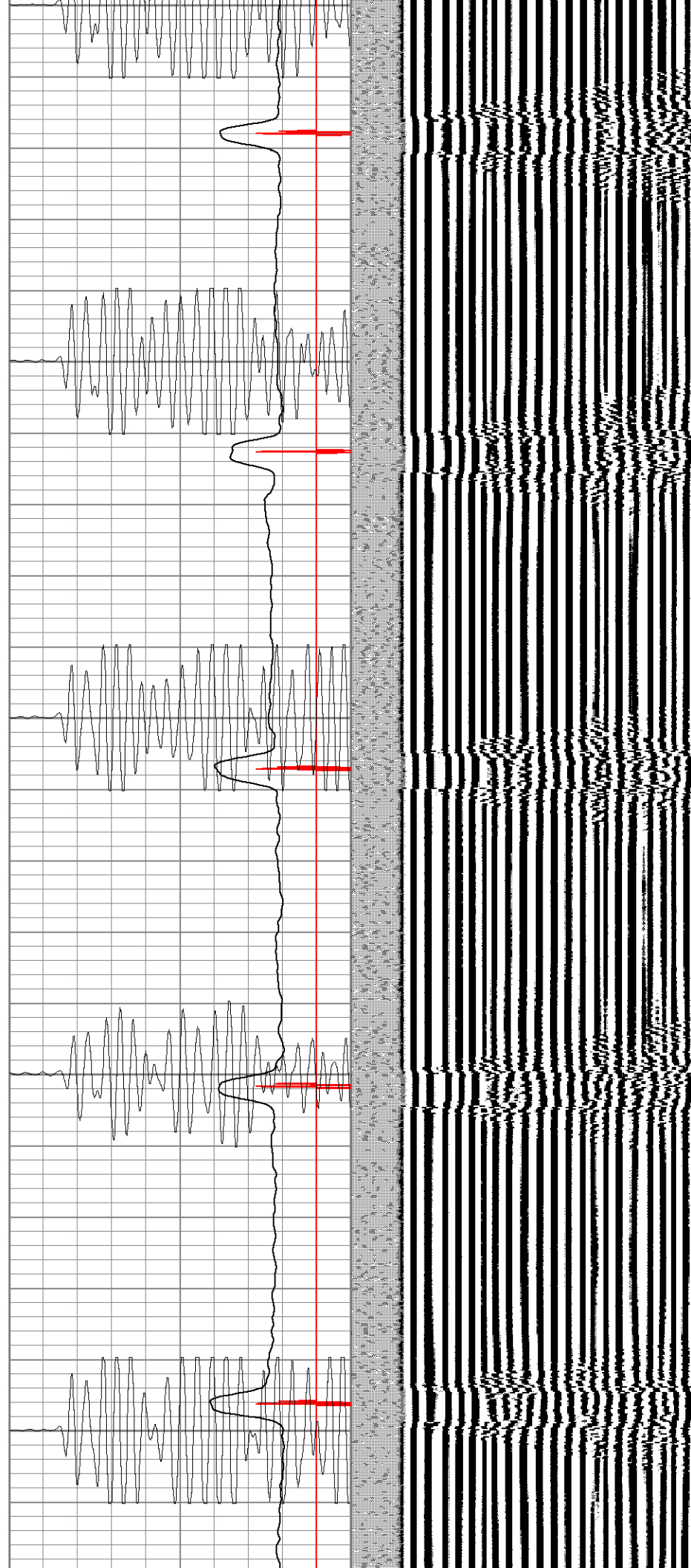
200

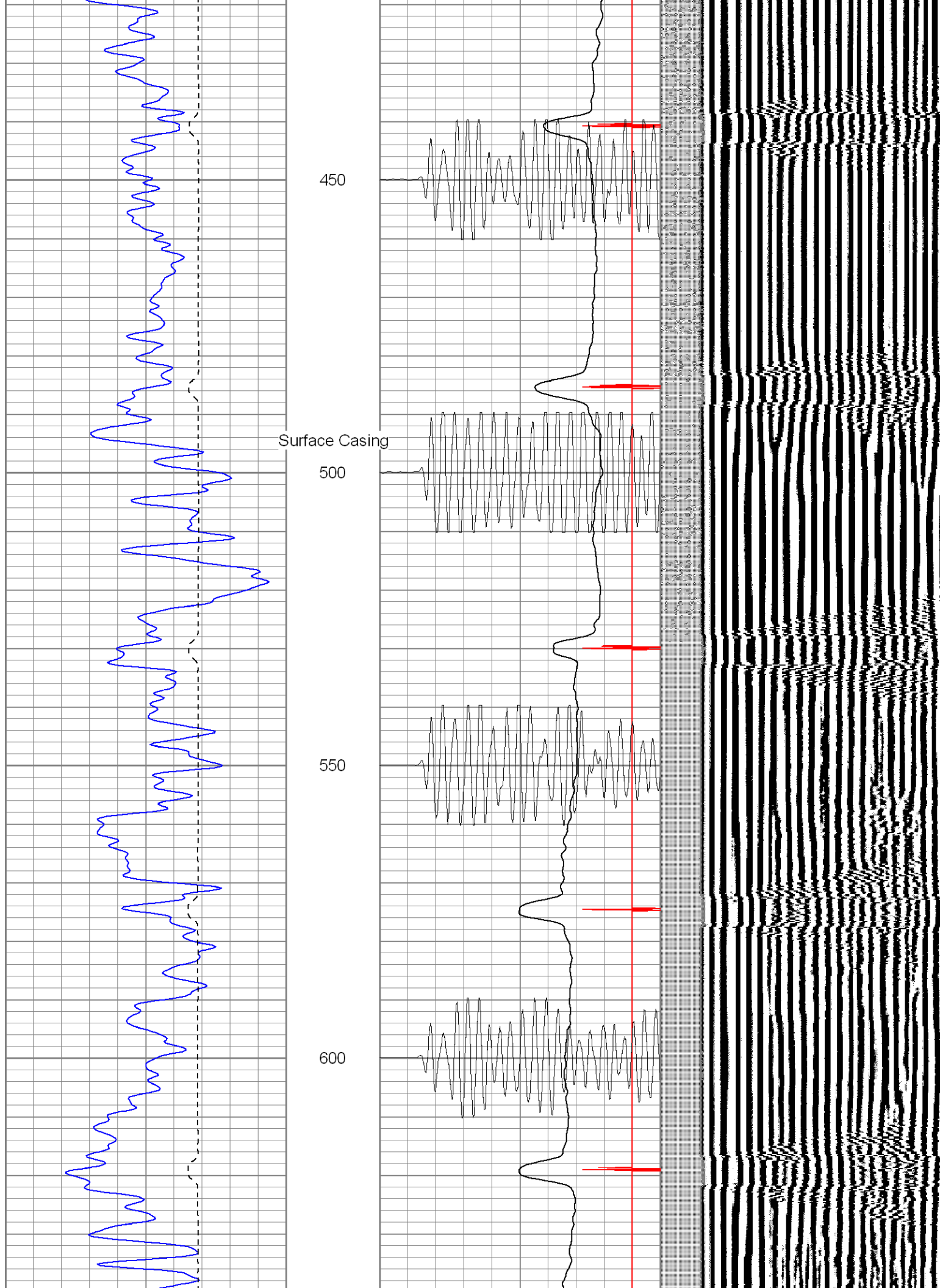
250

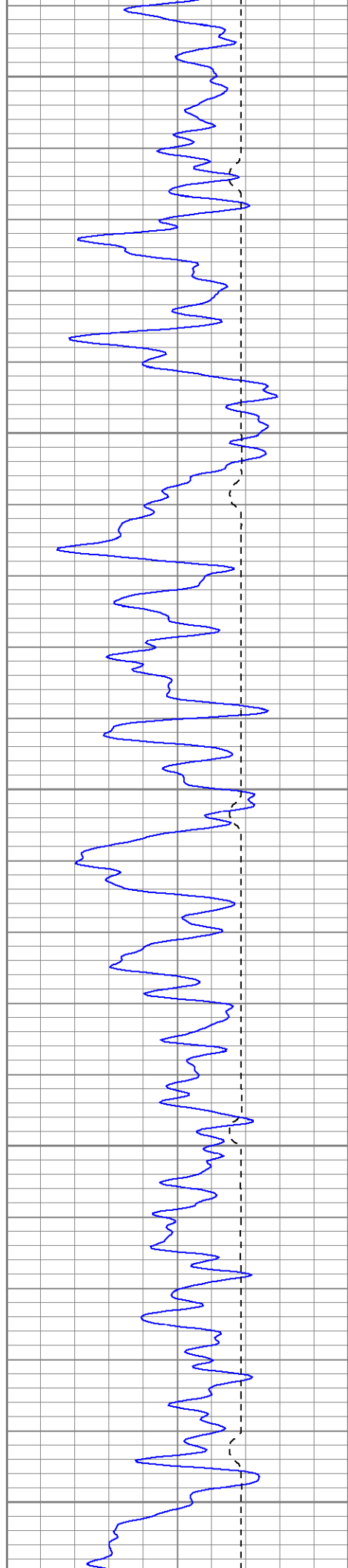
300

350

400







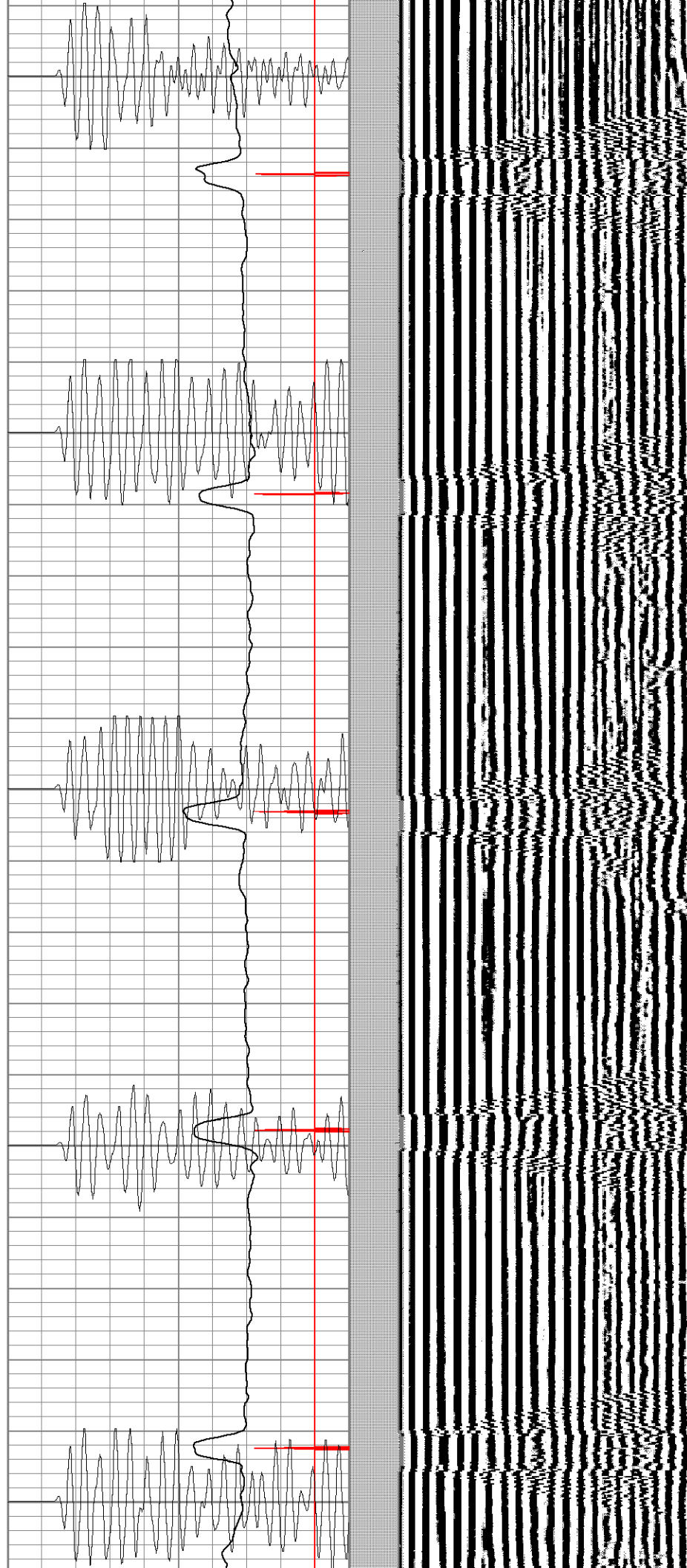
650

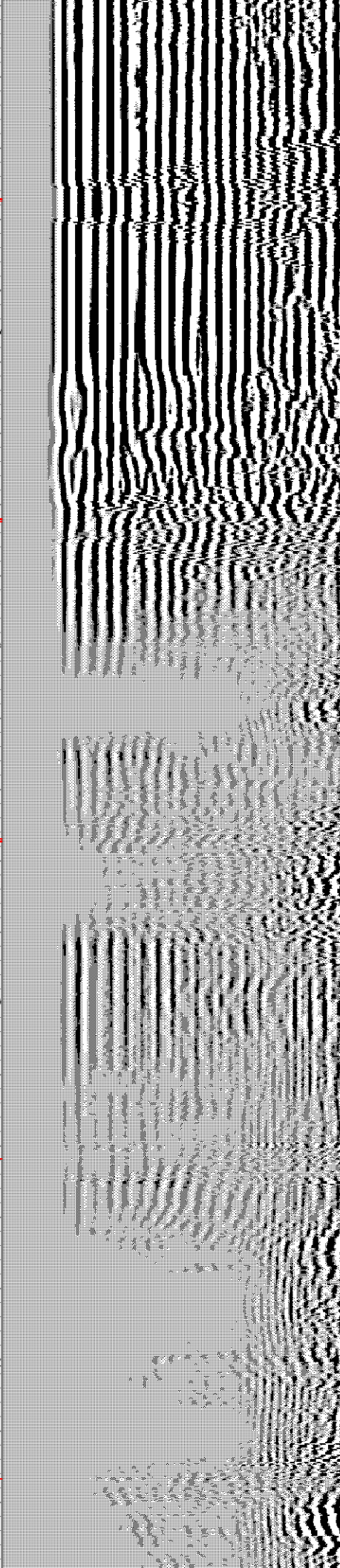
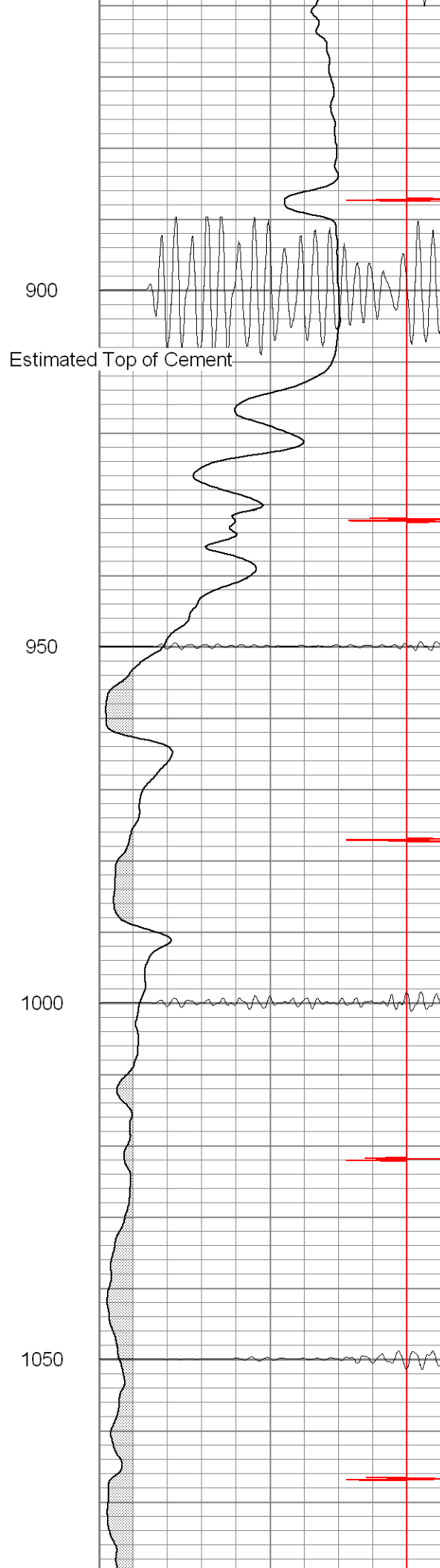
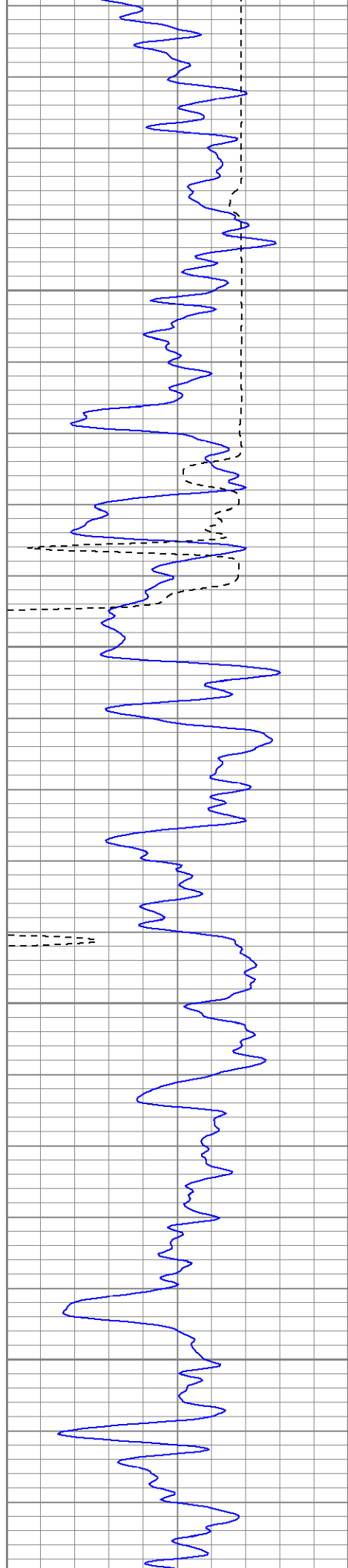
700

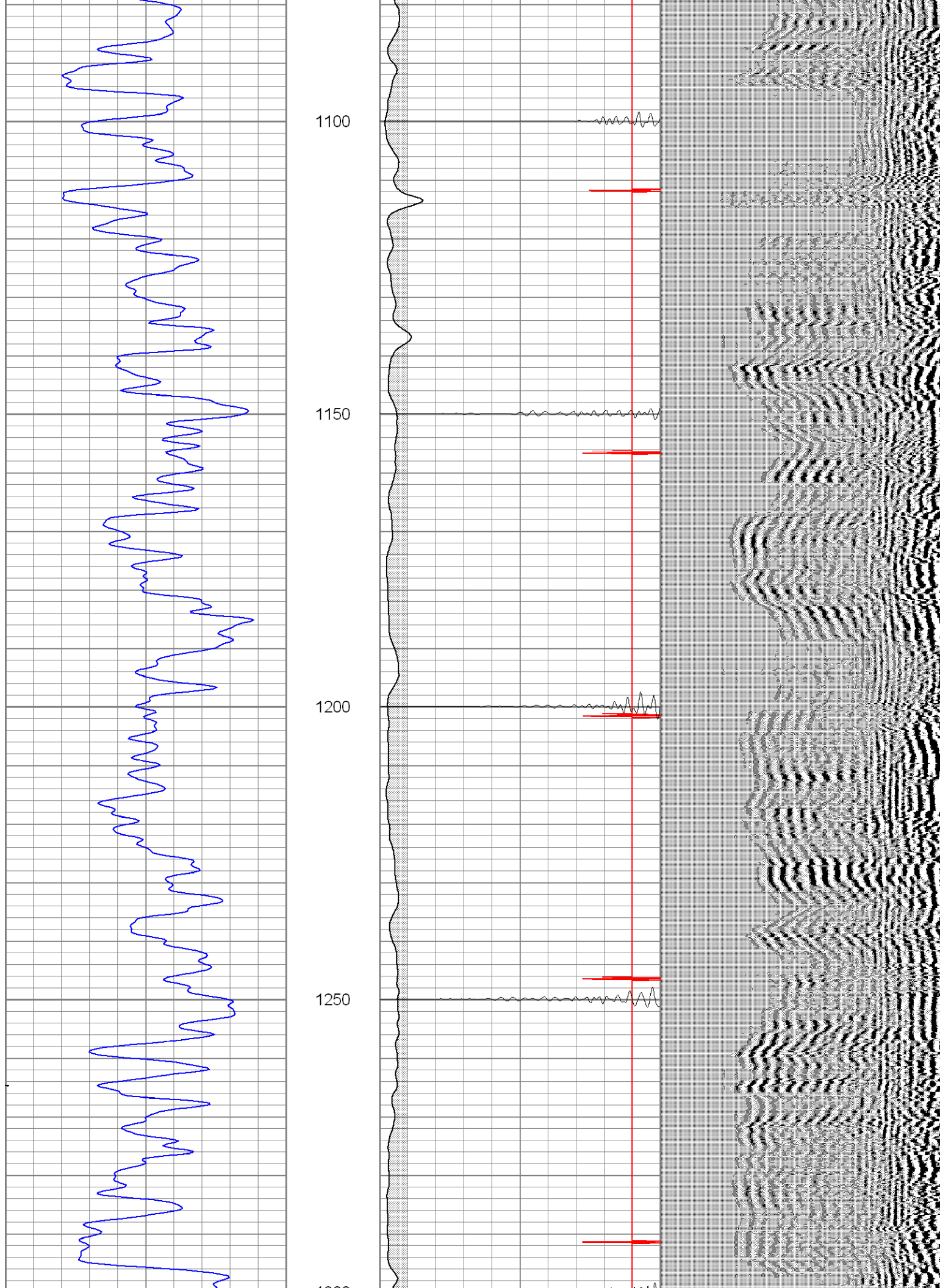
750

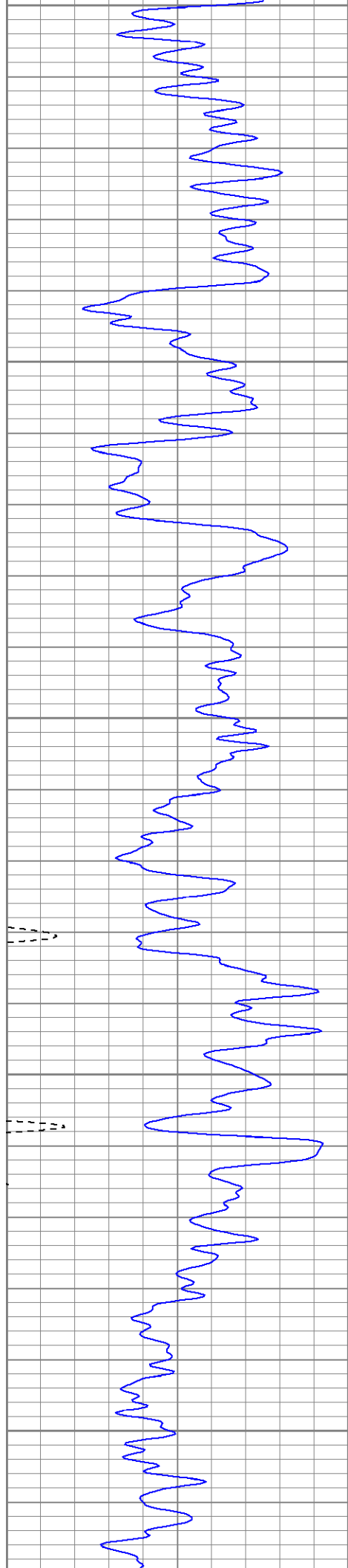
800

850









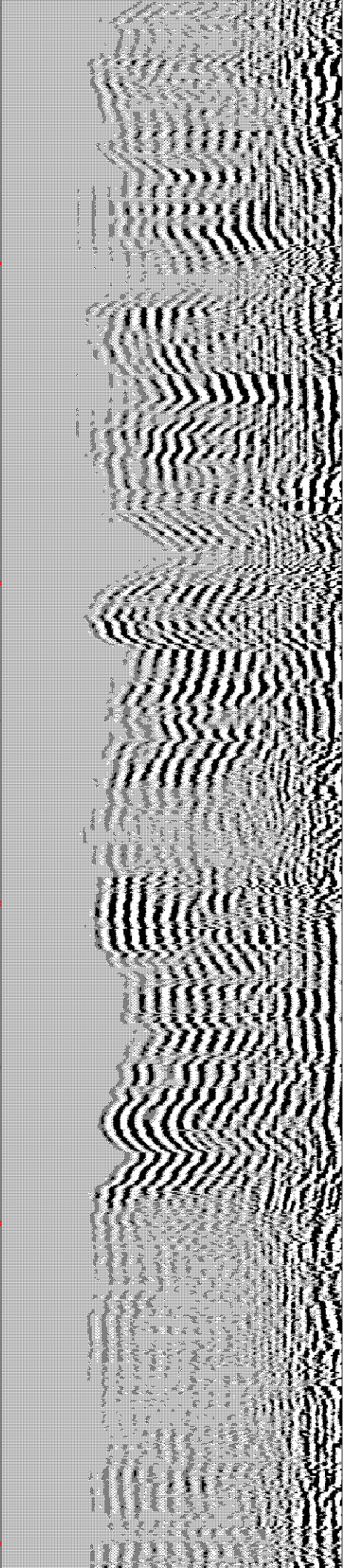
1300

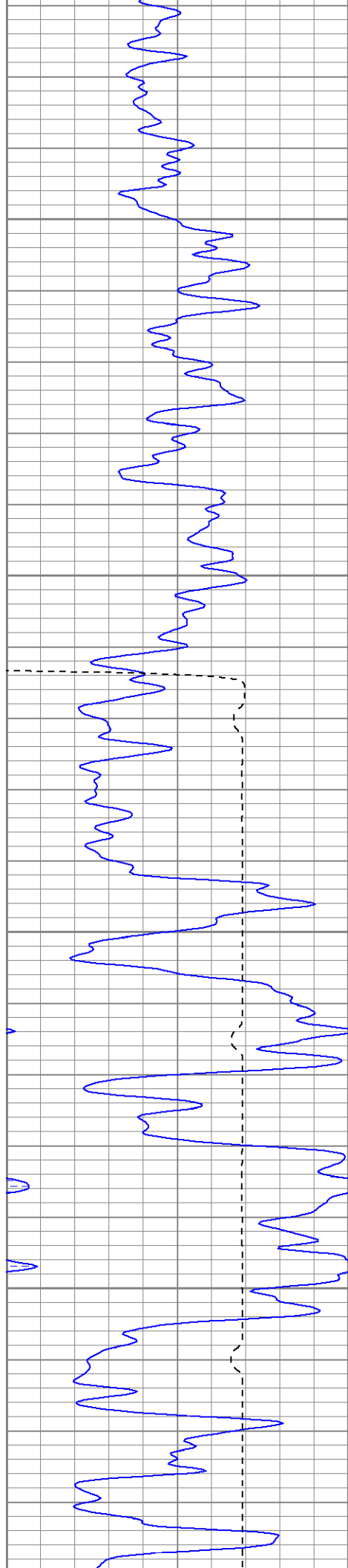
1350

1400

1450

1500



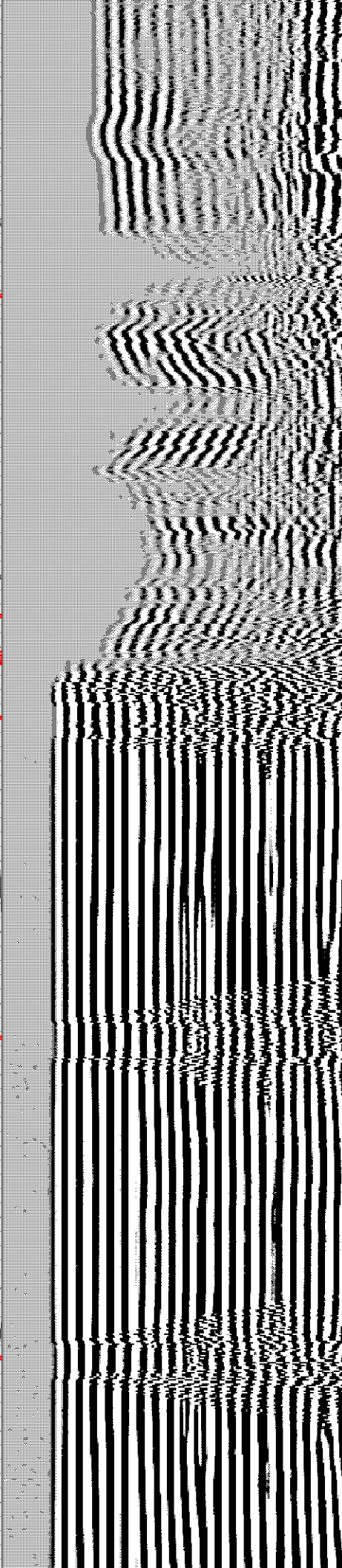
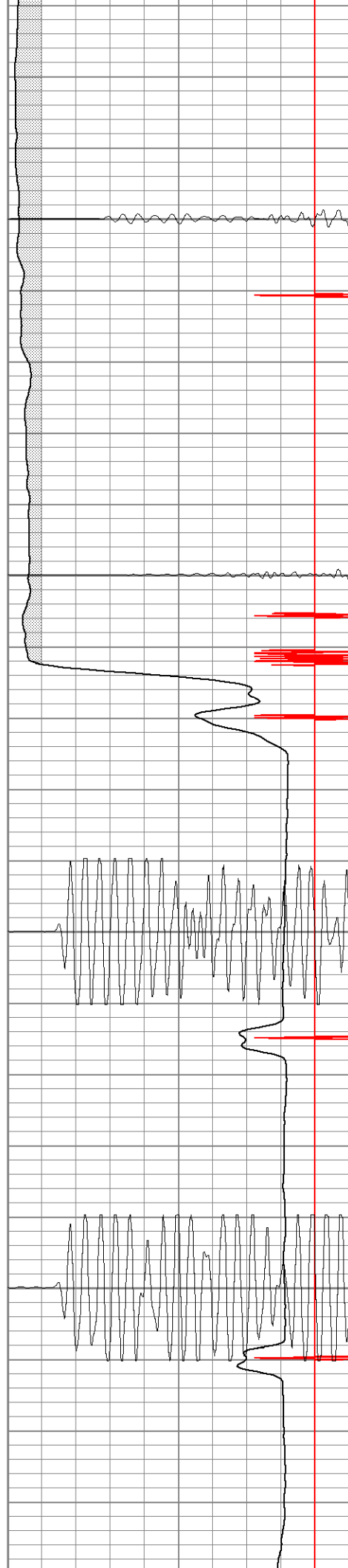


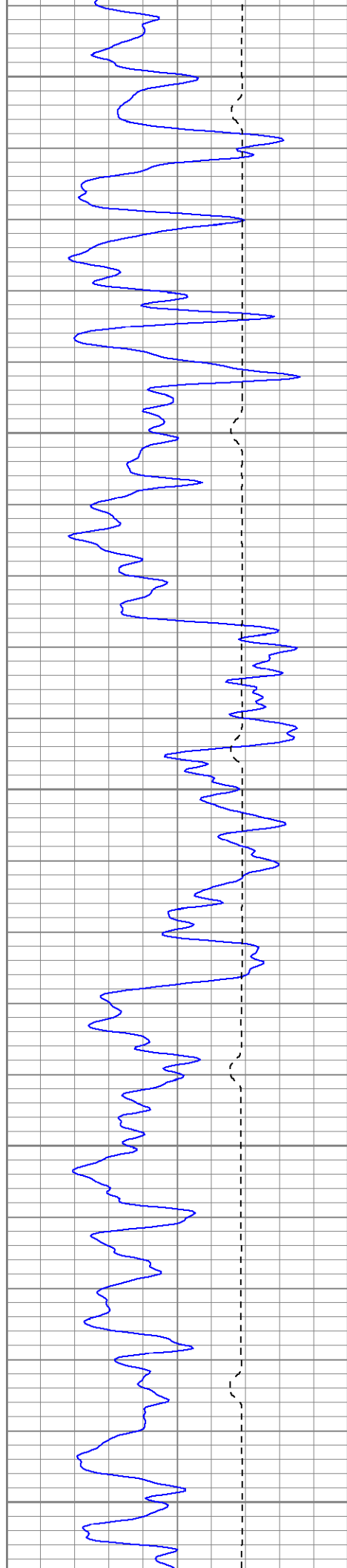
1550

1600

1650

1700





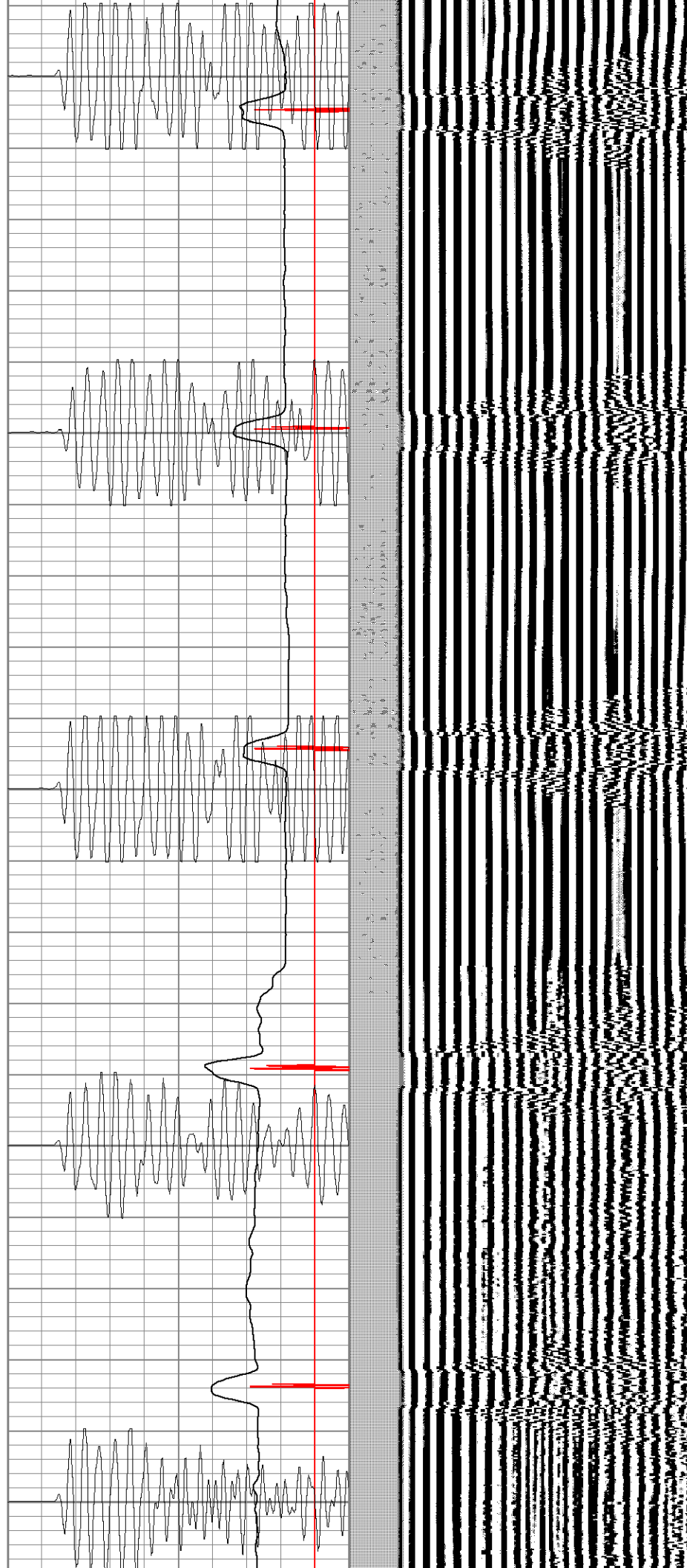
1750

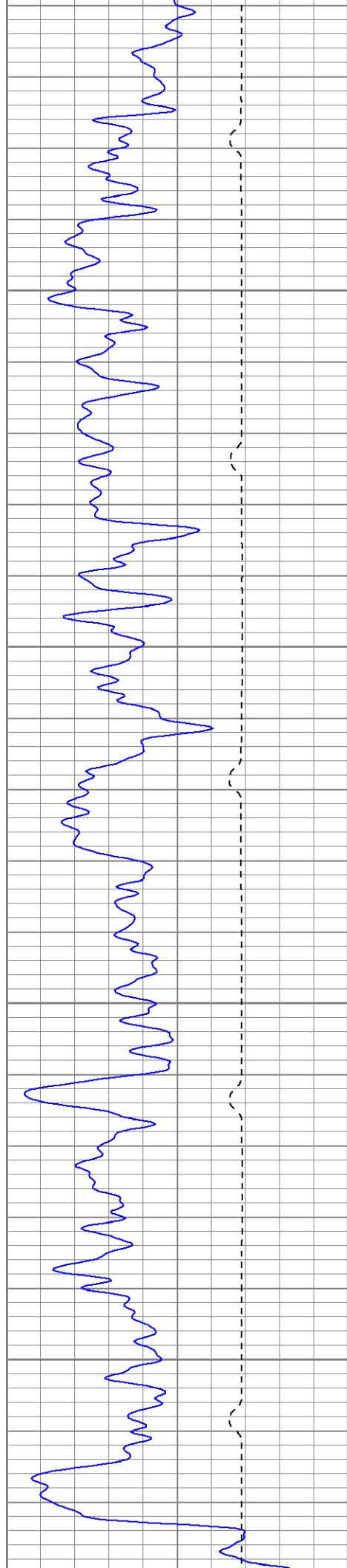
1800

1850

1900

1950



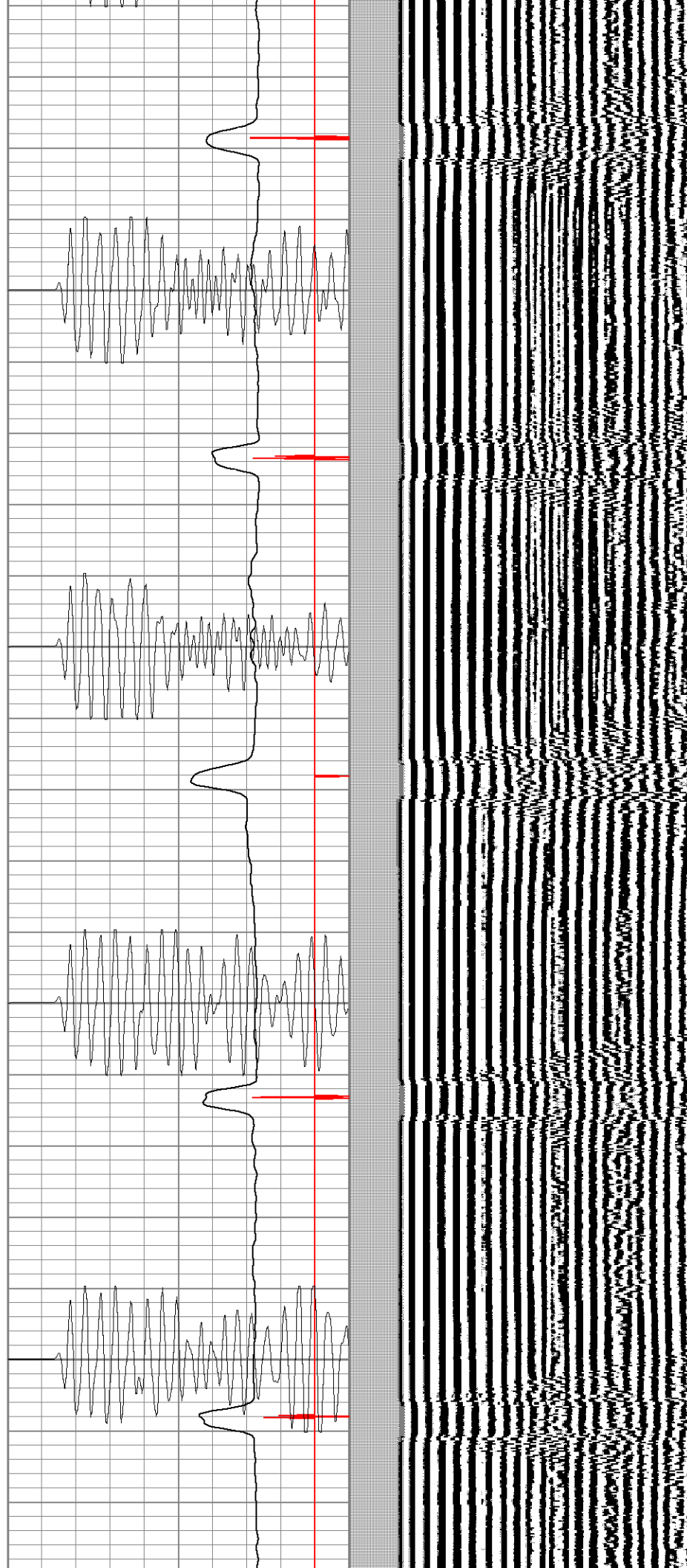


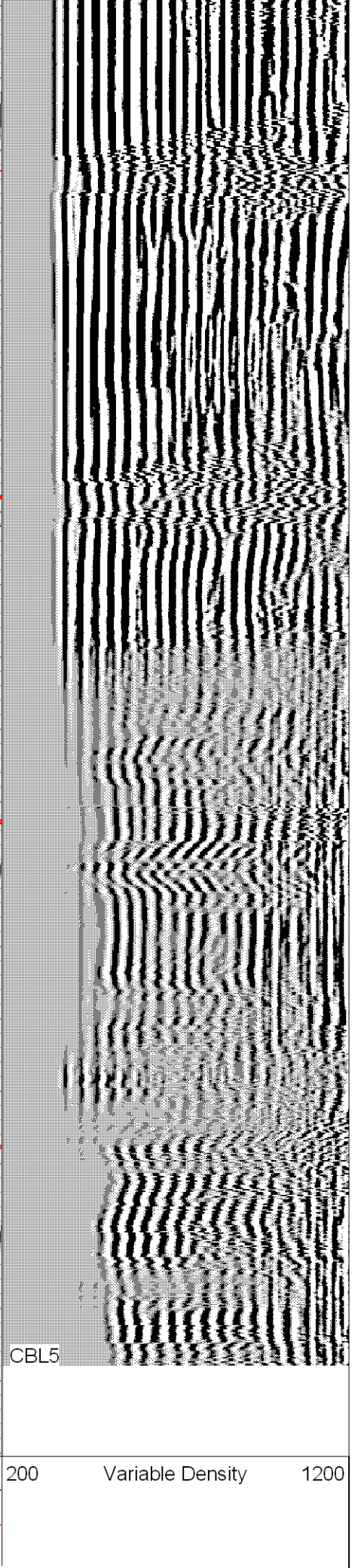
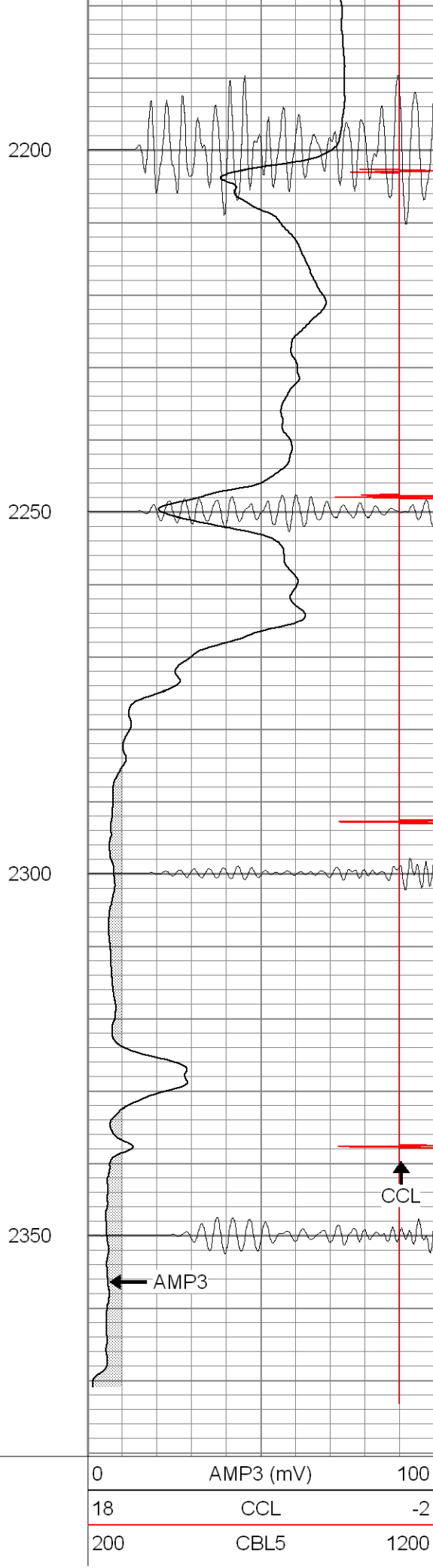
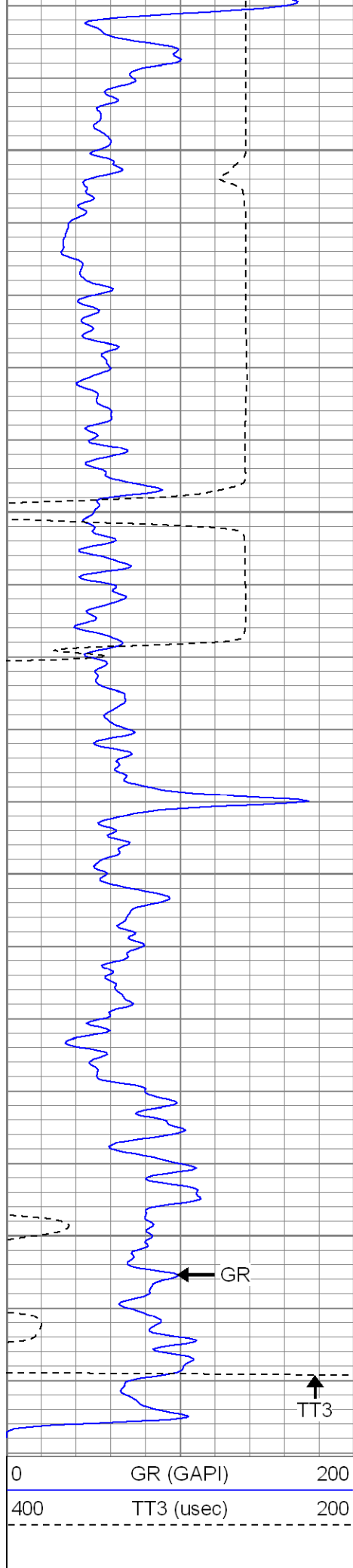
2000

2050

2100

2150







SUPERIOR

Black Lick, Pa.
Mercer, Pa.
Wooster, Oh.
Cleveland, Ok.
Trinidad, Co.

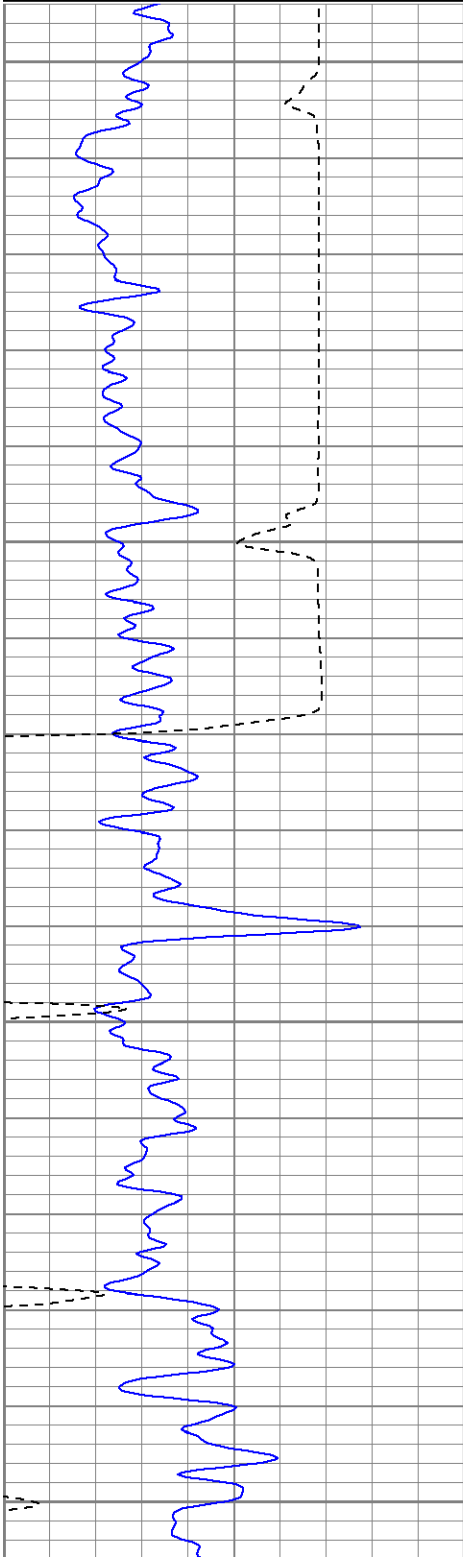
Repeat Section (0PSI)

Database File: ac050262107b.db
Dataset Pathname: pass1
Presentation Format: cblrt
Dataset Creation: Thu Jun 21 10:53:33 2007 by Log Open-Cased 061129
Charted by: Depth in Feet scaled 1:240

0	GR (GAPI)	200
400	TT3 (usec)	200

0	AMP3 (mV)	100
18	CCL	-2
200	CBL5	1200

200 Variable Density 1200



2200

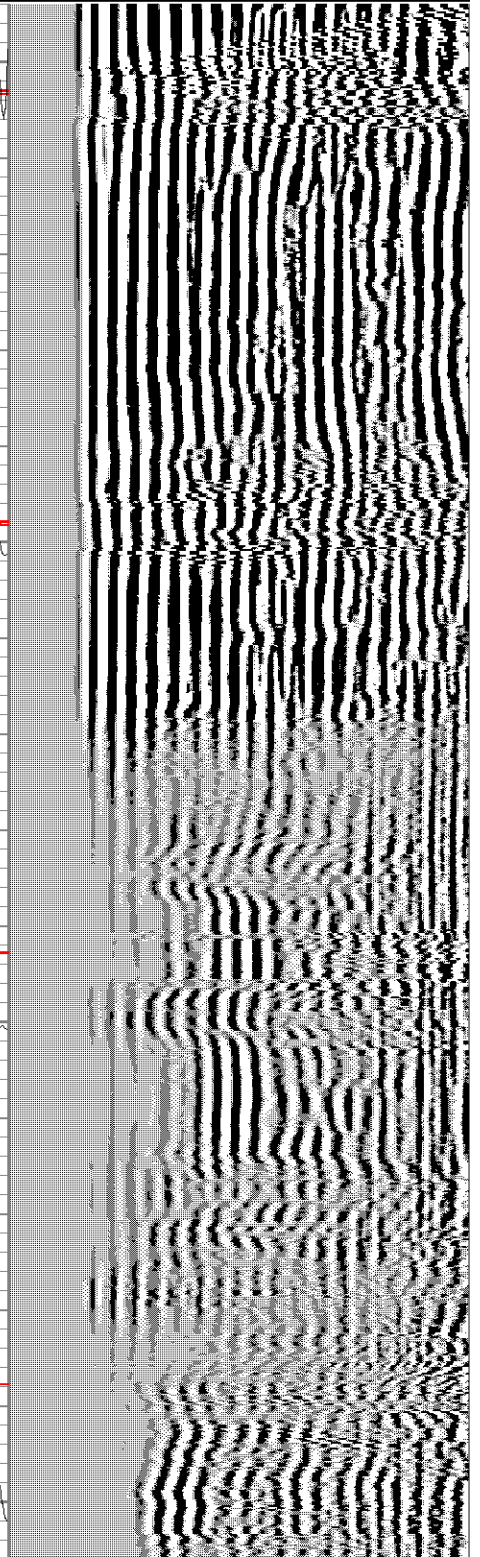
2250

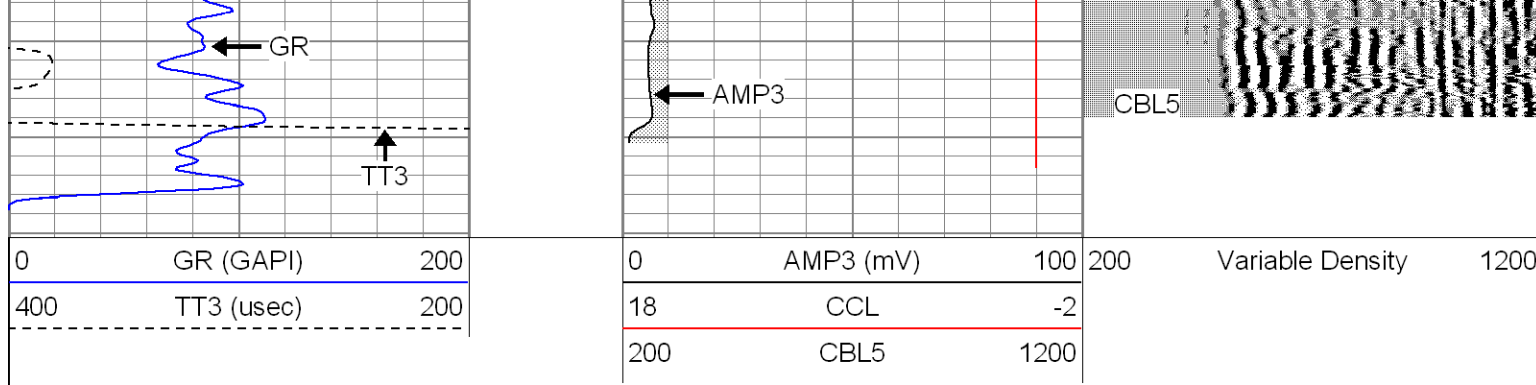
2300

2350



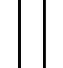
CCL





Calibration Report			
Database File:	ac050262107b.db		
Dataset Pathname:	pass1		
Dataset Creation:	Thu Jun 21 10:53:33 2007 by Log Open-Cased 061129		
Gamma Ray Calibration Report			
Serial Number:	Titan1		
Tool Model:	T1		
Performed:	Wed Jun 20 16:43:46 2007		
Calibrator Value:	200.0	GAPI	
Background Reading:	54.0	cps	
Calibrator Reading:	219.0	cps	
Sensitivity:	1.5000	GAPI/cps	
Cement Bond Log Calibration Report			
Serial Number:	Titan4		
Tool Model:	T4		
Performed:	Thu Jun 21 09:44:46 2007		
Depth:	74.8132	ft	
Casing Diameter:	5.5	in	
	3' Spacing	5' Spacing	
Signal Zero:	0	0	mV
Calibrated Amplitude:	85	71.921	mV
Reading at Signal Zero:	0.0239014	0.020166	V
Reading in Free Pipe:	1.75	1.63755	V
Gain:	49.244	44.4675	
Offset:	1.5	-0.896733	

Sensor	Offset (ft)	Schematic	Description	Len (ft)	OD (in)	Wt (lb)
			CHD-None (0)	0.75	1.50	5.00
			CENT-X (2)	3.00	1.69	25.00
WVF5	12.30		CBL-T4 (Titan4)	8.15	2.25	110.00
WVF3	11.30					
CCL	7.10		CCL-T1 (Titan1)	1.33	3.13	15.00

GR	4.30		GR-T1 (Titan1)	3.63	3.13	25.00
			CENT-X (1)	3.00	1.69	25.00
Dataset: ac050262107b.db: field/well/run1/pass1 Total Length: 19.86 ft Total Weight: 205.00 lb O.D. 3.13 in						