

# BLANCO

Geological Services LLC

Scale 1:240 (5"=100') Imperial

Well Name: Tahoe 33-20  
Location: NW/SE sec. 20, T32s R67w  
Licence Number: 05-071-08445-00  
Spud Date: 09/23/05  
Surface Coordinates: 1464FSL 1861' FEL

Region: Purgatoire River  
Drilling Completed: 09/26/05

## Bottom Hole Coordinates:

Ground Elevation (ft): 7933'      K.B. Elevation (ft): 7937'  
Logged Interval (ft): 860'      To: 3100'      Total Depth (ft): 3100'  
Formation: Poison Canyon / Raton / Vermejo / Trinidad / Pierre  
Type of Drilling Fluid: Air/Mist

Printed by STRIP.LOG from WellSight Systems 1-800-447-1534 [www.WellSight.com](http://www.WellSight.com)

## OPERATOR

Company: Pioneer Natural Resources USA Inc.  
Address: 1401 17th Street Suite 1200  
Denver CO 80202

## GEOLOGIST

Name: Steven Sewell/Roy Ismay/Kristopher Alworth  
Company: BLANCO Geological Services LLC  
Address: 806 Robinson  
Trinidad CO 81082  
(719) 846-3364

## Rig

Pense #18

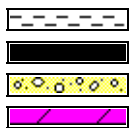
## Comments

8 5/8" #24 Surface Casing set to 575' ft

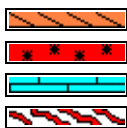
## ROCK TYPES



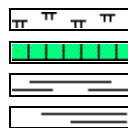
Anhy  
Bent  
Brec  
Cht



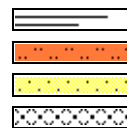
Clyst  
Coal  
Congl  
Dol



Gyp  
Igne  
Lmst  
Meta



Mrlst  
Salt  
Shale  
Shcol



Shgy  
Sltst  
Ss  
Till

## ACCESSORIES

### MINERAL

Anhy  
 Arggrn  
 Arg  
 Bent  
 Bit  
 Brecfrag  
 Calc  
 Carb  
 Chtdk  
 Chtlt  
 Dol  
 Feldspar  
 Ferrpel  
 Ferr  
 Glau

K  
 T  
 \*  
 D  
 +  
 P  
 B  
 .  
 ..  
 ^  
 S  
 V

Gyp  
 Hvymin  
 Kaol  
 Marl  
 Minxl  
 Nodule  
 Phos  
 Pyr  
 Salt  
 Sandy  
 Silt  
 Sil  
 Sulphur  
 Tuff

### FOSSIL

Algae  
 Amph  
 Belm  
 Bioclst  
 Brach  
 Bryozoa  
 Cephal  
 Coral  
 Crin  
 Echin  
 Fish  
 Foram  
 Fossil  
 Gastro  
 Oolite

Ostra  
 Pelec  
 Pellet  
 Pisolite  
 Plant  
 Strom

### STRINGER

Anhy  
 Arg  
 Bent  
 Coal  
 Dol  
 Gyp  
 Ls  
 Mrst

Sltstrg  
 Ssstrg

### TEXTURE

Boundst  
 Chalky  
 Cryxln  
 Earthy  
 Finexln  
 Grainst  
 Lithogr  
 Microxln  
 Mudst  
 Packst  
 Wackest

## OTHER SYMBOLS

### POROSITY TYPE

Earthy  
 Fenest  
 F  
 Inter  
 Moldic  
 Organic  
 Pinpoint

Vuggy

### SORTING

Well  
 Moderate  
 Poor

### ROUNDING

Rounded  
 Subrnd  
 Subang  
 Angular

Spotted  
 Ques  
 Dead

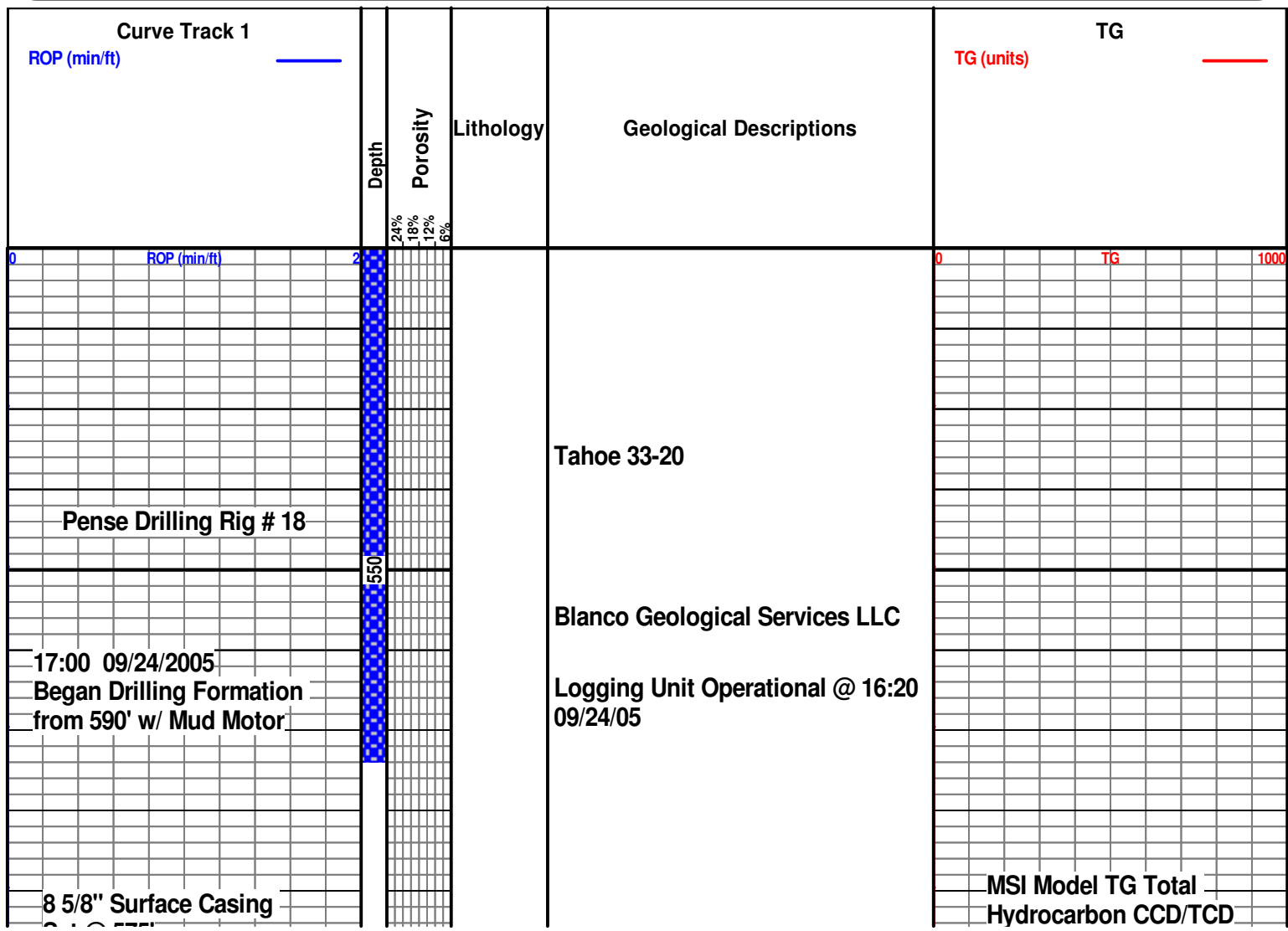
### INTERVALS

Core  
 Core run  
 Dst

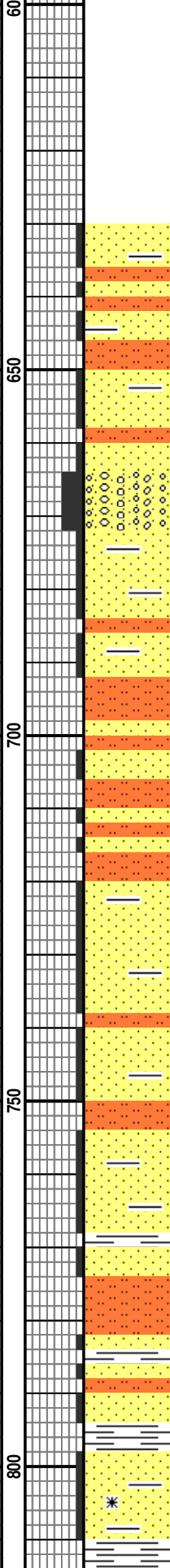
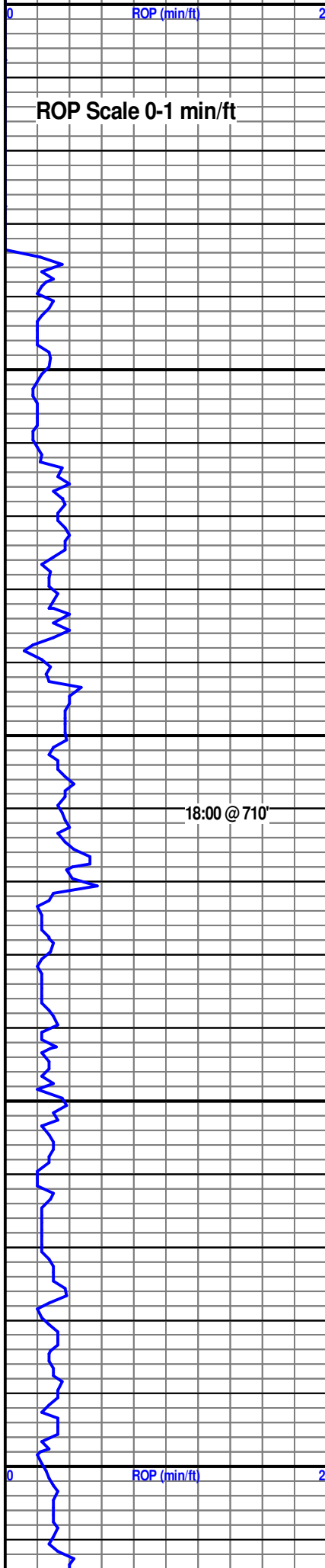
Srfcsg  
 Cv-v  
 Cv-c

### EVENTS

Rft  
 Sidewall  
 Srfcsg



Set @ 575



Began Sampling @ 630'

### Poison Canyon Formation

SANDSTONE grey gren, fg, sub angular, mod-poorly sorted, mod-well consolidated, calcareous Interbedded SILTSTONE grey green, firm, mod hard, blocky, well indurated

SANDSTONE white clear, mg-cg, sub angular-sub rounded, mod sorted, un consolidated, calcareous, minor Glauconite

SILTSTONE grey green, firm, mod hard, blocky, well indurated, Interbedded SANDSTONE

SANDSTONE green brown, fg, sub angular-sub rounded, mod-poorly sorted, mod-well consolidated, calcareous, micaceous, minor Glauconite, Interbedded SILTSTONE grey green, firm, mod hard, blocky, well indurated

SANDSTONE green brown, fg, sub angular-sub rounded, mod-poorly sorted, mod-well consolidated, calcareous, micaceous, minor Glauconite, Interbedded SILTSTONE grey green, firm, mod hard, blocky, well indurated

