

Company: COLEMAN OIL & GAS, INC.

Well: ZUEGE 17-34

Field: WILDCAT

County: YUMA State: COLORADO

CEMENT BOND LOG
GAMMA RAY CCL

County: YUMA

Field: WILDCAT

Location: SW SE

Well: SUEGE 17-34

Company: COLEMAN OIL & GAS, INC.

LOCATION

\$W SE

61 6' FSL & 1 793' FEL

Elev.: K.B. 3947 ft
G.L. 3935 ft
D.F. 3946 ft

Perm arent Datum: _____

Log Measured From: _____

Drilling Measured From: _____

GROUND LEVEL

KELLY BUSHING

Elev.: 3935 ft

12.0 ft above Perm. Datum

Logging Date

Run Number

Depth Driller

Schlumberger Depth

Bottom Log Interval

Top Log Interval

Casing Fluid Type

Salinity

Density

Fluid Level

BIT/CASING/TUBING STRING

Bit Size

From

To

Casing/Tubing Size

Weight

Grade

From

To

Maximum Recorded Temperatures

Logger On Bottom

Unit Number

Recorded By

Witnessed By

API Serial No.
05-095-11138-00

Section
17

Township
1S

Range
45W

Logging Date	17-Mar-2008			
Run Number	1			
Depth Driller	2520 ft			
Schlumberger Depth	2496 ft			
Bottom Log Interval	2496 ft			
Top Log Interval	1350 ft			
Casing Fluid Type	FRESH WATER			
Salinity				
Density				
Fluid Level				
BIT/CASING/TUBING STRING				
Bit Size	6.250 in			
From				
To				
Casing/Tubing Size	4.500 in			
Weight	10.5 lbm/ft			
Grade	J-55			
From				
To				
Maximum Recorded Temperatures	120 degF			
Logger On Bottom	17-Mar-2008			
Unit Number	309	6650		
Recorded By	KEITH KRENTZ			
Witnessed By	DAVE LERWICK			

PVT DATA				Run 1	Run 2	Run
Oil Density						
Water Salinity						
Gas Gravity						
Bo						
Bw						
1/Bg						
Bubble Point Pressure						
Bubble Point Temperature						
Solution GOR						
Maximum Deviation						
CEMENTING DATA						
Primary/Squeeze		Primary				
Casing String No						
Lead Cement Type						
Volume						
Density						
Water Loss						
Additives						
Tail Cement Type						
Volume						
Density						
Water Loss						
Additives						
Expected Cement Top	1500 ft					
Logging Date						
Run Number						
Depth Driller						
Schlumberger Depth						
Bottom Log Interval						
Top Log Interval						
Casing Fluid Type						
Salinity						
Density						
Fluid Level						
BIT/CASING/TUBING STRING						
Bit Size						
From						
To						
Casing/Tubing Size						
Weight						
Grade						
From						
To						
Maximum Recorded Temperatures						
Logger On Bottom						
Unit Number						
Recorded By						
Witnessed By						

DISCLAIMER

THE USE OF AND RELIANCE UPON THIS RECORDED-DATA BY THE HEREIN NAMED COMPANY (AND ANY OF ITS AFFILIATES, PARTNERS, REPRESENTATIVES, AGENTS, CONSULTANTS AND EMPLOYEES) IS SUBJECT TO THE TERMS AND CONDITIONS AGREED UPON BETWEEN SCHLUMBERGER AND THE COMPANY, INCLUDING: (a) RESTRICTIONS ON USE OF THE RECORDED-DATA; (b) DISCLAIMERS AND WAIVERS OF WARRANTIES AND REPRESENTATIONS REGARDING COMPANY'S USE OF AND RELIANCE UPON THE RECORDED-DATA; AND (c) CUSTOMER'S FULL AND SOLE RESPONSIBILITY FOR ANY INFERENCE DRAWN OR DECISION MADE IN CONNECTION WITH THE USE OF THIS RECORDED-DATA.

OTHER SERVICES1

OS1: MAST
OS2: CBL
OS3: PERF
OS4:
OS5:

OTHER SERVICES2

OS1:
OS2:
OS3:
OS4:
OS5:

REMARKS: RUN NUMBER 1

DEPTH REFERENCE TO SLB LOG DATED FEBRUARY 15, 2008

REMARKS: RUN NUMBER 2

PERF 2328' - 2348' AT 3 SPF, 60 SHOTS, 3 1/8 HEGS, 16.1gm, EH .41",
pene 18.5", 180 deg

CREW: KEITH & ROGER

THANK YOU FOR CHOOSING SCHULMBERGER.

RUN 1

SERVICE ORDER #: 12006535
PROGRAM VERSION: 15C0-309
FLUID LEVEL:

LOGGED INTERVAL	START	STOP

RUN 2

SERVICE ORDER #:
PROGRAM VERSION:
FLUID LEVEL:

LOGGED INTERVAL	START	STOP

EQUIPMENT DESCRIPTION

RUN 1

SURFACE EQUIPMENT

WITM-A

DOWNHOLE EQUIPMENT

MH-22 29.8
MH-22

PSPT-A/B 28.3
PSC-A
PSPT-A

Detail MT
TelStatus
CTEM



28.3

RUN 2

PSTC
PBMS-A
10k Sapphire Manometer
RTD Thermometer
GR
CCL
PBMS

GR 24.6

Well Temp
Manometer 21.5
21.4

CCL 20.8

PBMS PSTC 20.0

SCMT-CB
SCMC-CA 8159
SECH-CA 8158
CMIR-AG
SCMS-CB 8195
SCMX-CA 8159

20.0

DT 10.9

CBL5 DTSC 9.4

CBL3 8.4

MAP 7.9

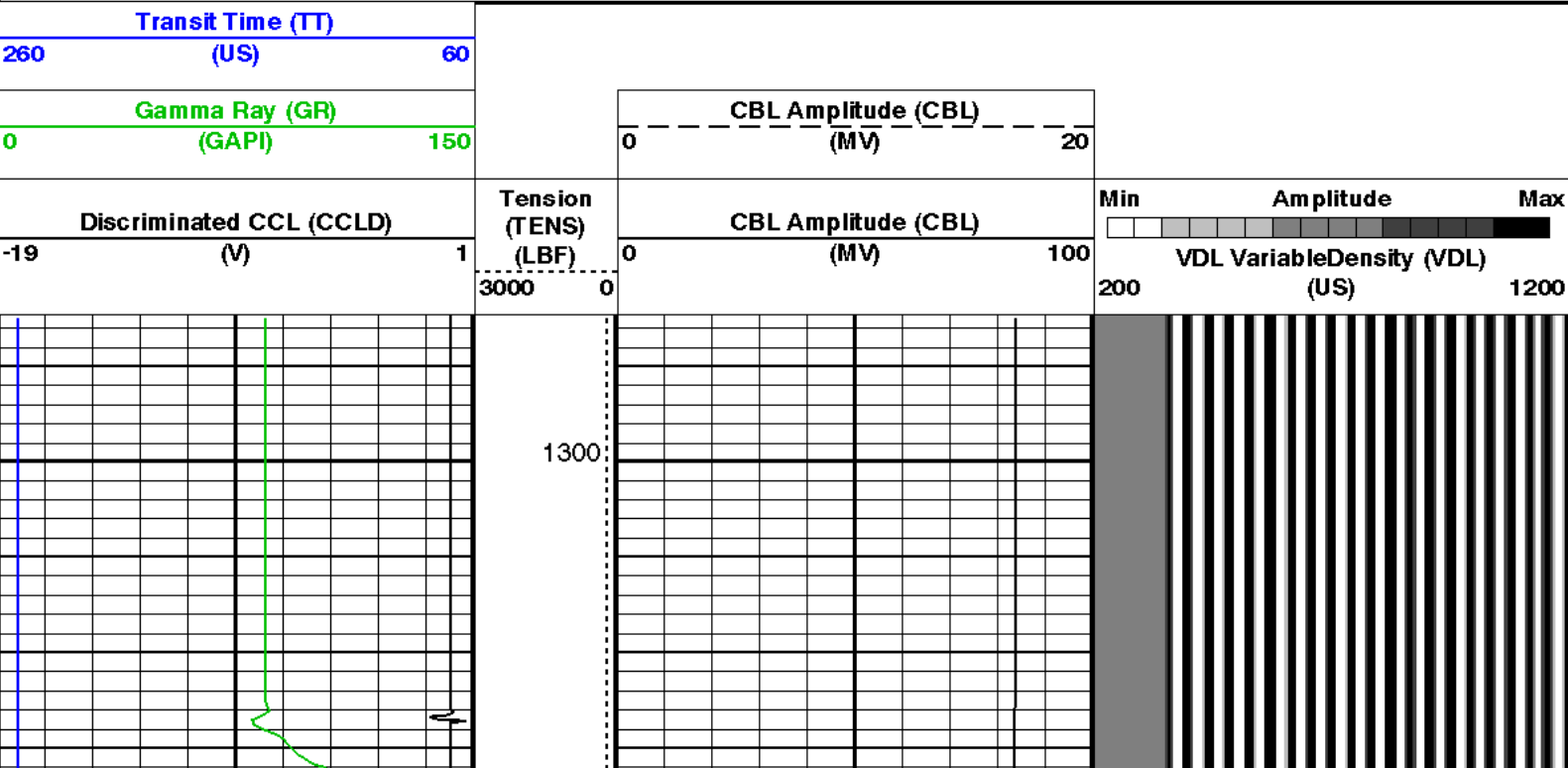
AUX 6.9

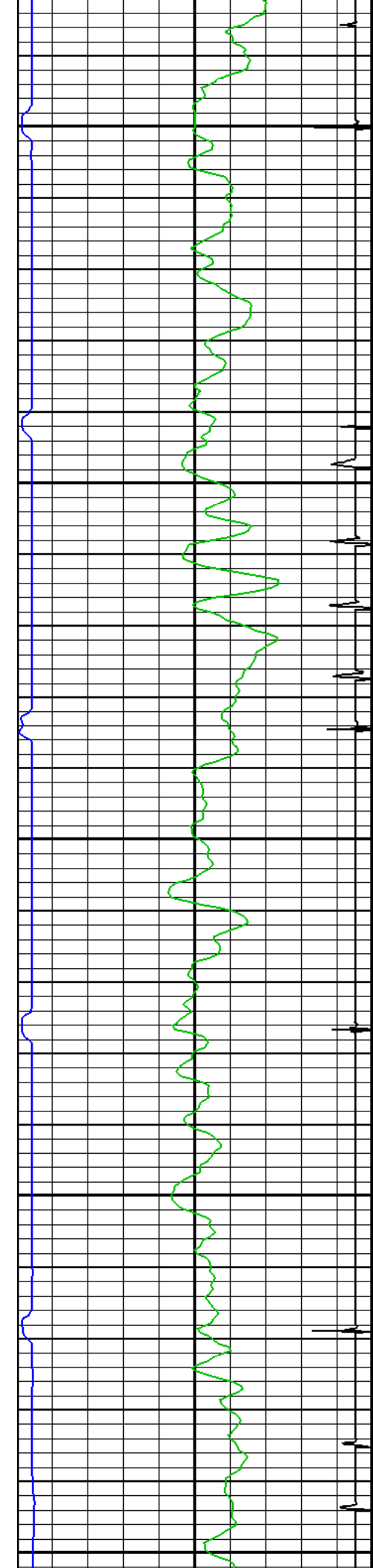
HV
Tension SCMT 0.0
TOOL ZERO

MAXIMUM STRING DIAMETER 1.69 IN
MEASUREMENTS RELATIVE TO TOOL ZERO
ALL LENGTHS IN FEET

Input DLIS Files						
DEFAULT	SCMT_PSP_004PUP	FN:3	PRODUCER	17-Mar-2008 12:33	2512.0 FT	1302.5 FT
Output DLIS Files						
DEFAULT	SCMT_PSP_005PUP	FN:4	PRODUCER	17-Mar-2008 12:37	2513.5 FT	1284.5 FT

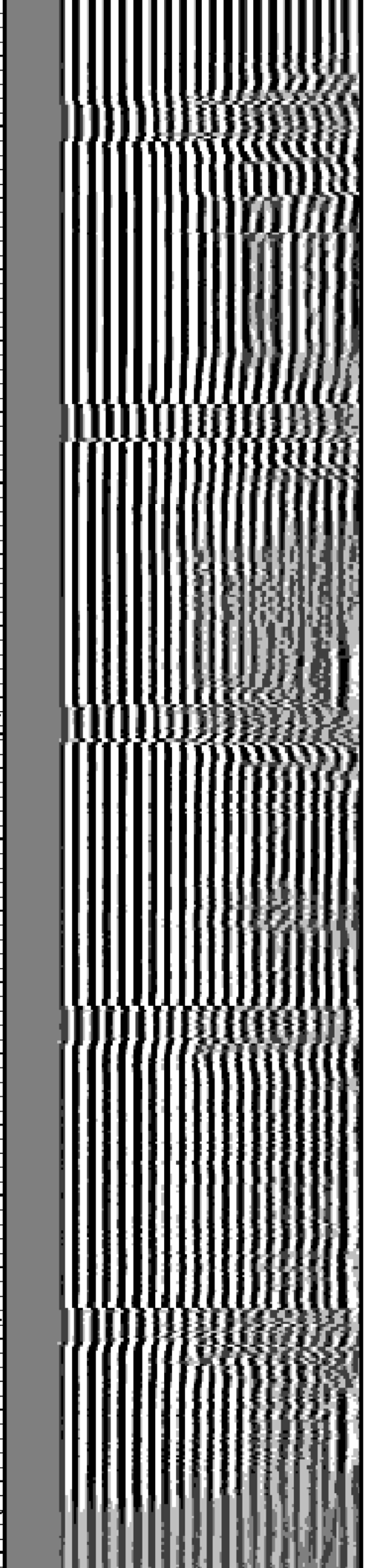
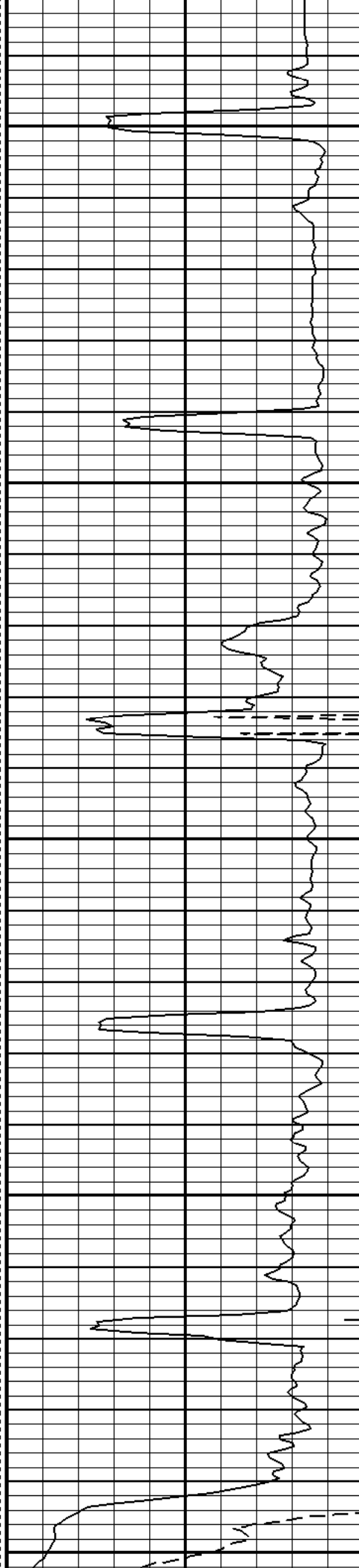
OP System Version: 15C0-309			
MCM			
SCMT-CB	SRPC-3525-DEC_2007_OP15	PSPT-A/B	SRPC-3525-DEC_2007_OP15

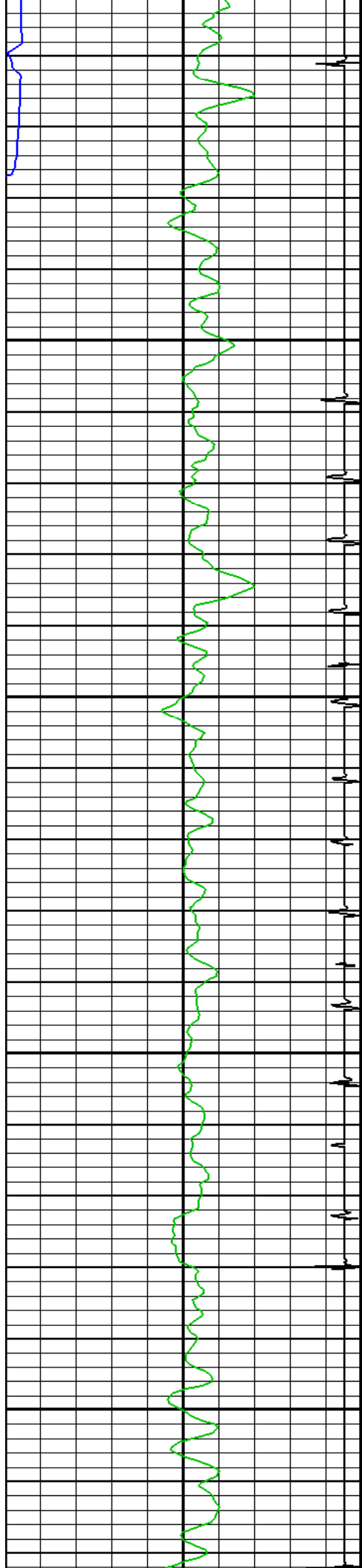




1400

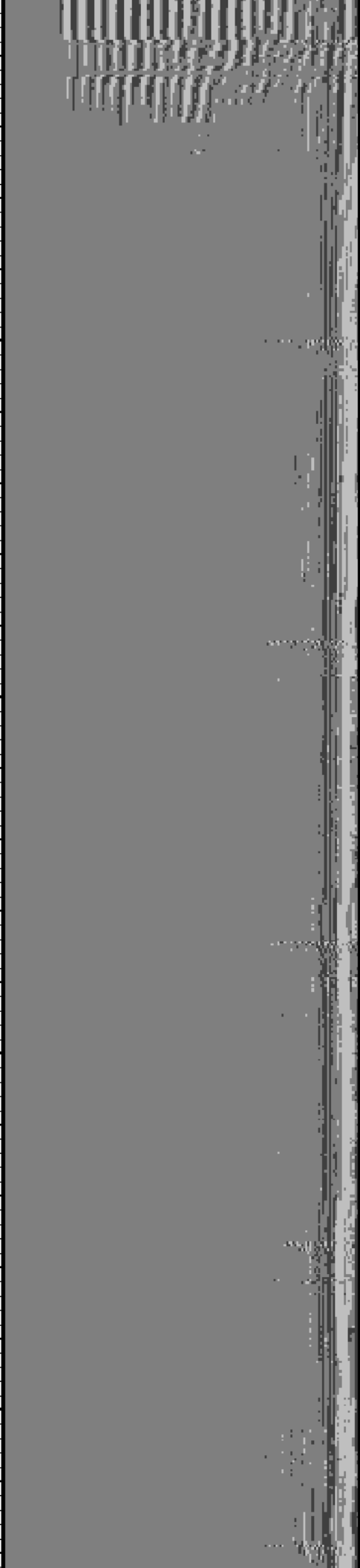
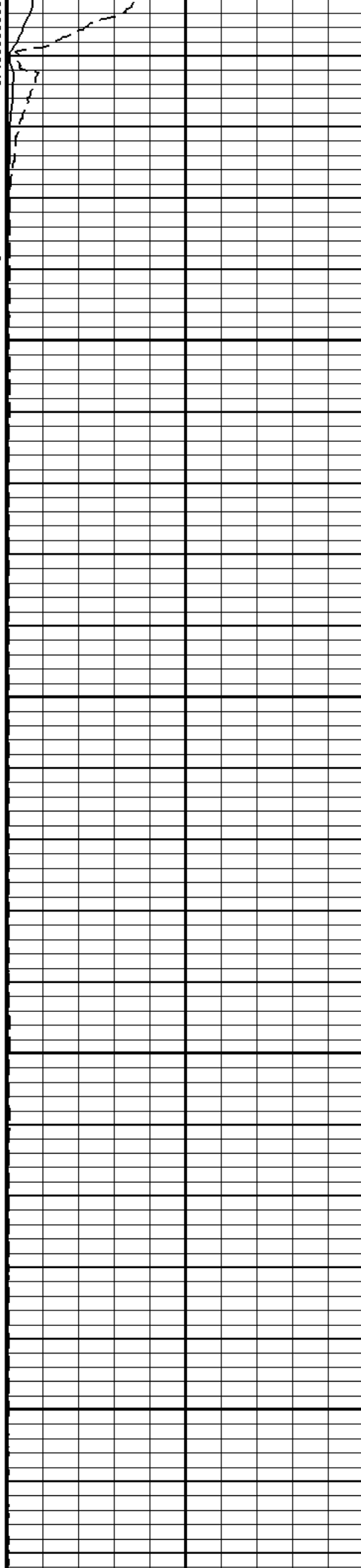
1500

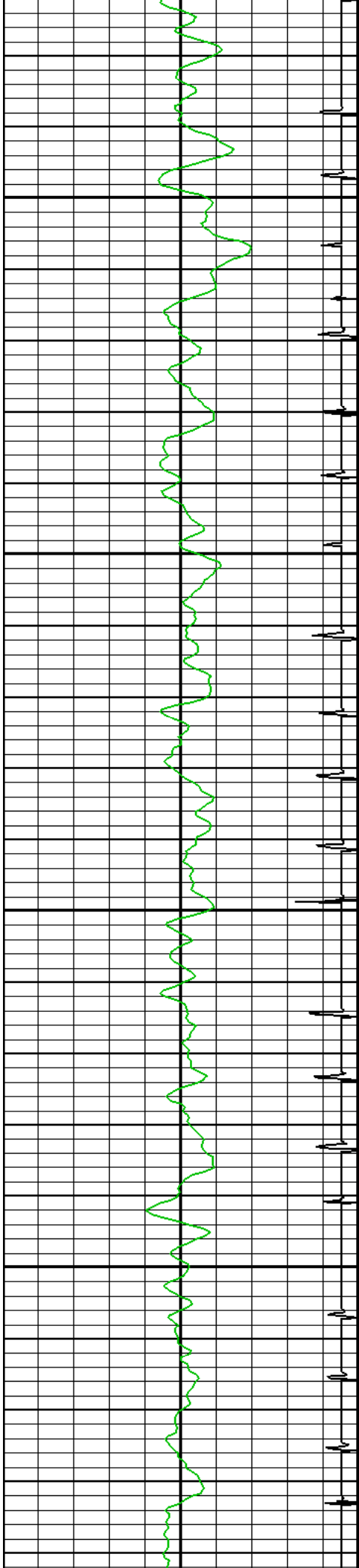




1600

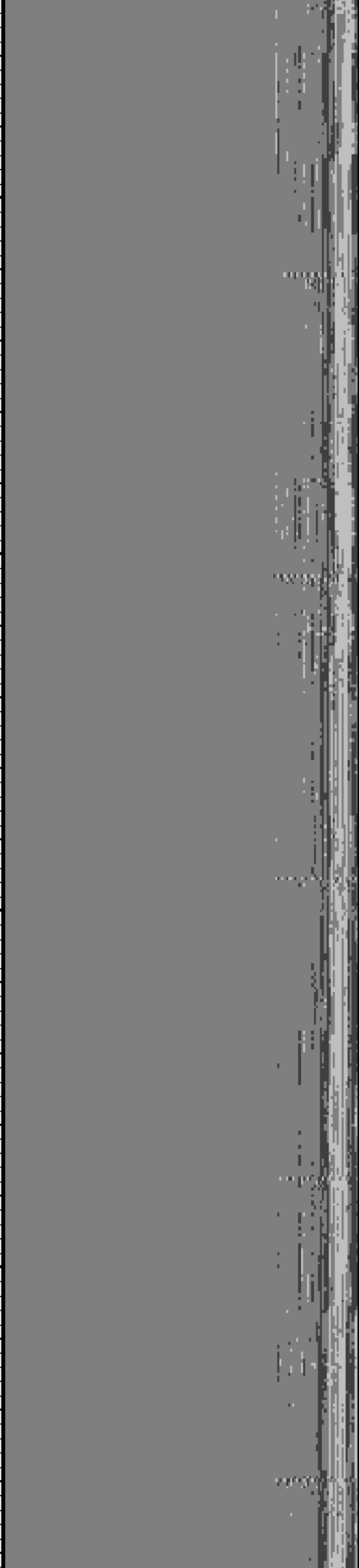
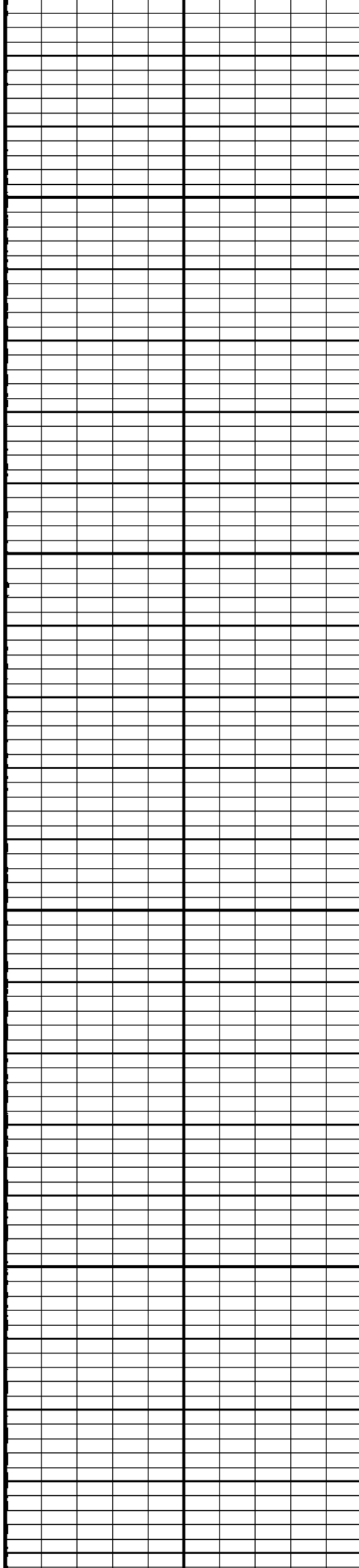
1700

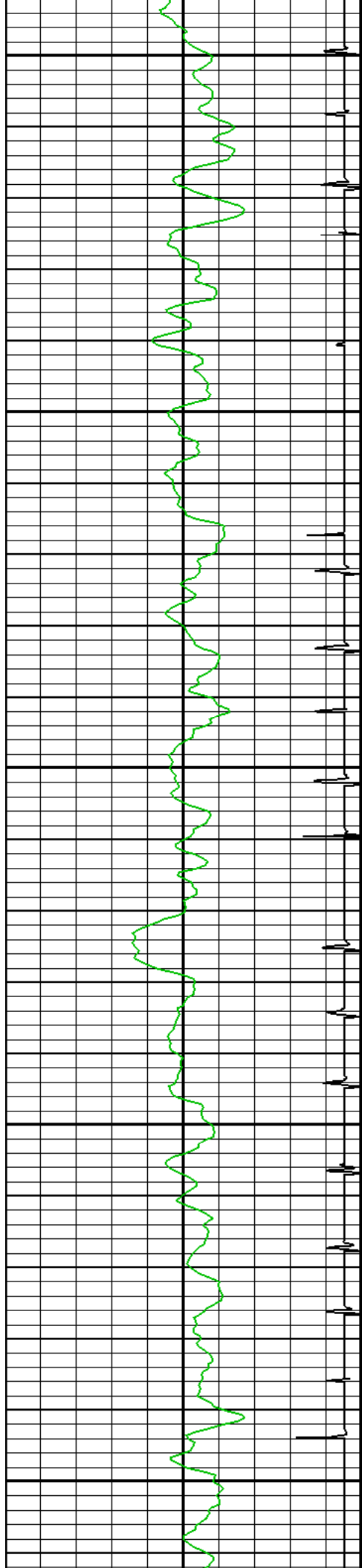




1800

1900

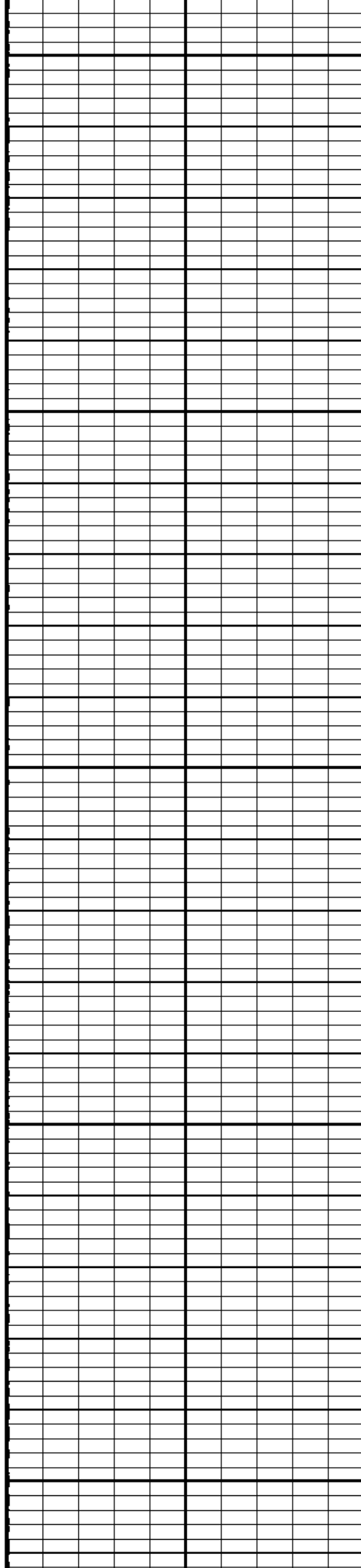


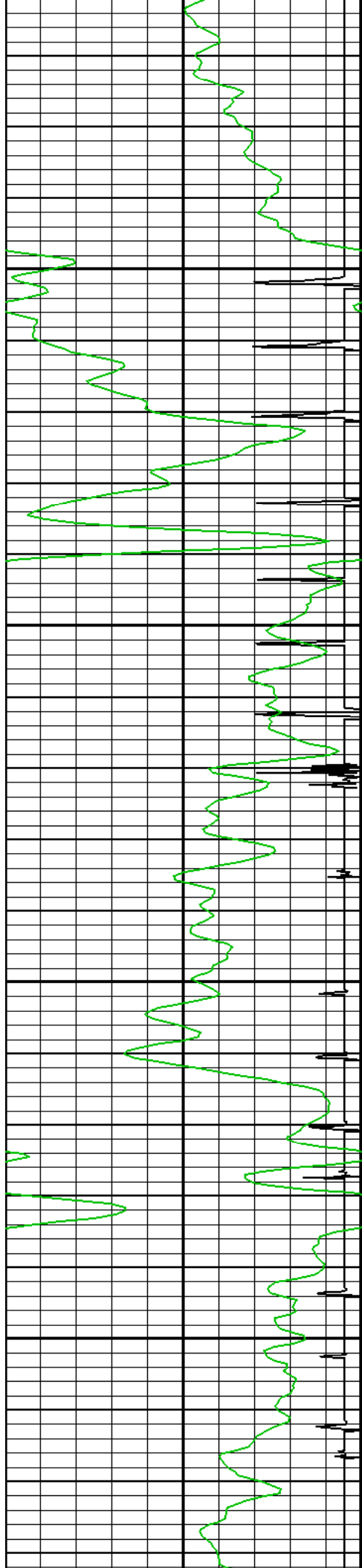


2000

2100

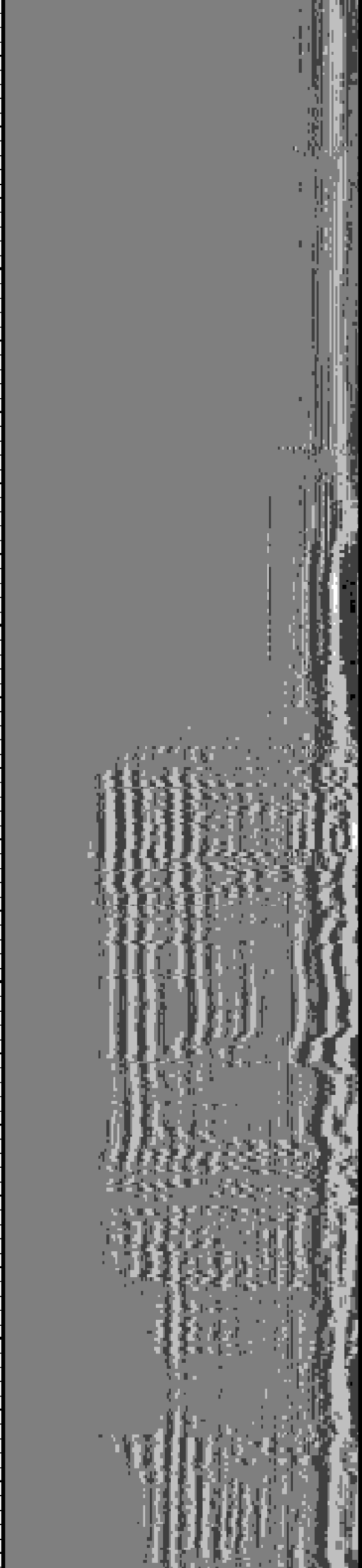
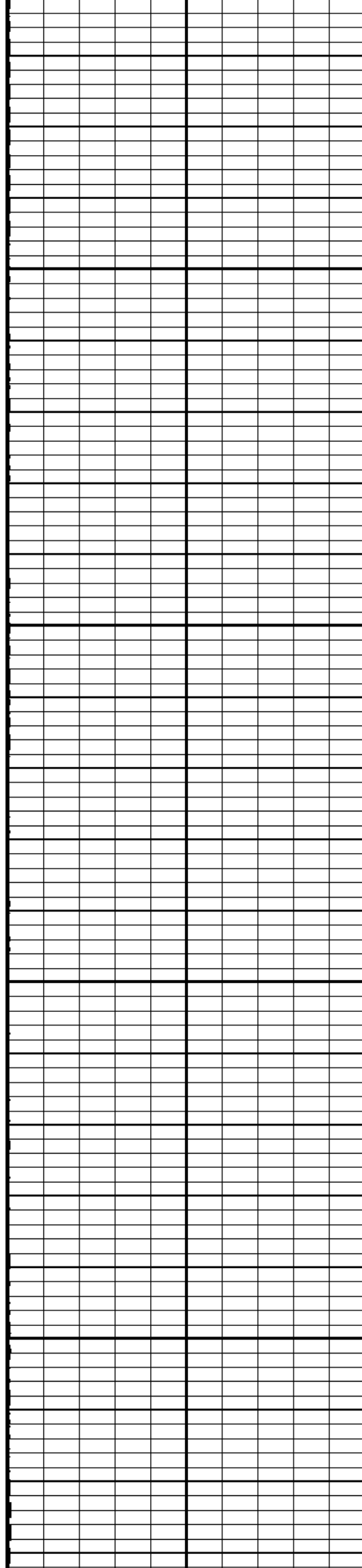
2200

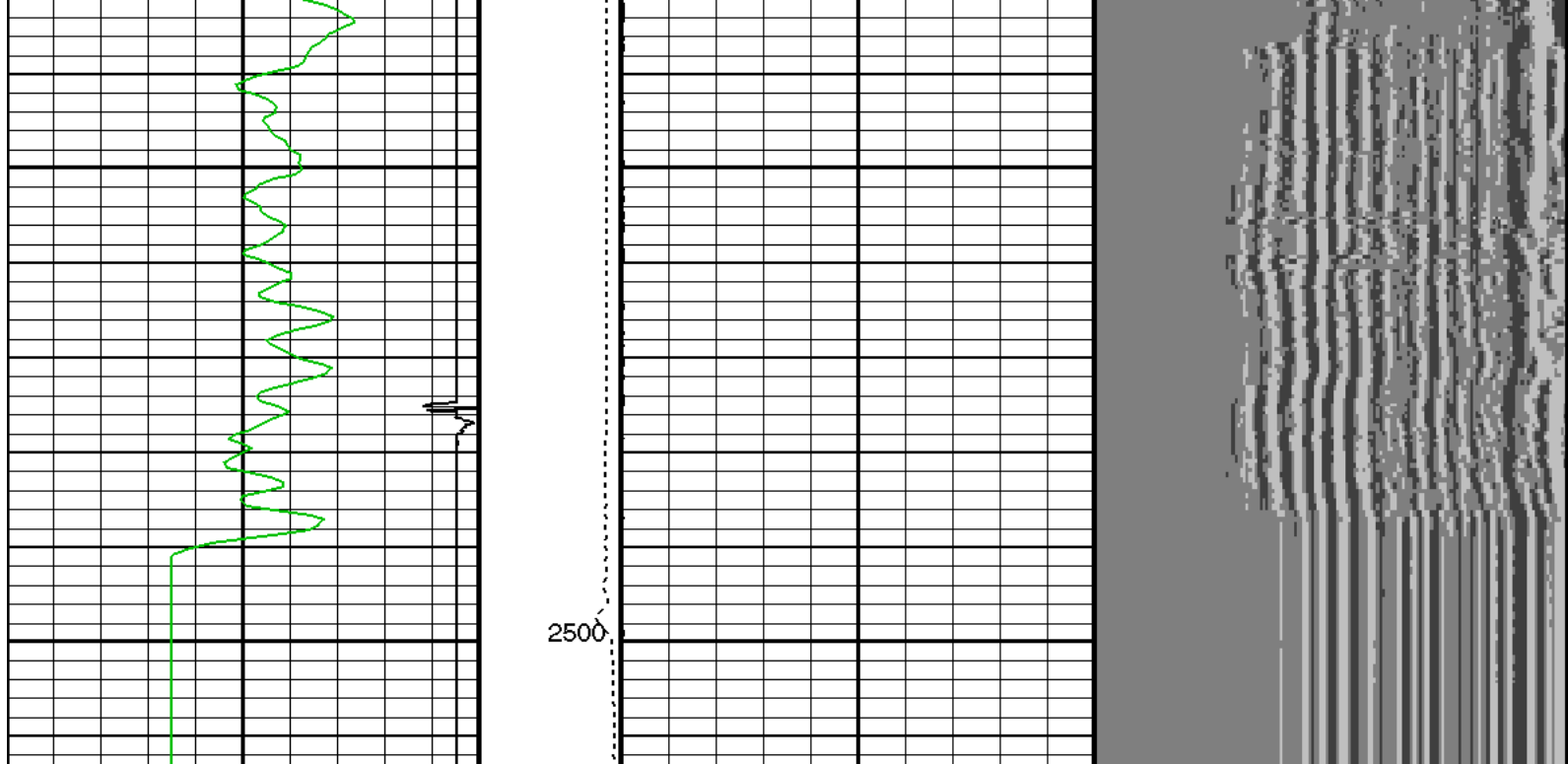




2300

2400





Discriminated CCL (CCLD)		Tension (TENS) (LBF)	CBL Amplitude (CBL)		Min	Amplitude	Max
-19	(V)	1	0	(MV)	100		
Gamma Ray (GR) (GAPI)		3000	0			VDL VariableDensity (VDL) (US)	
0						200	1200
Transit Time (TT) (US)			0	CBL Amplitude (CBL) (MV)			
260					20		

Format: CBL_VDL Vertical Scale: 5" per 100' Graphics File Created: 17-Mar-2008 12:37

OP System Version: 15C0-309

MCM

SCMT-CB SRPC-3525-DEC_2007_OP15 PSPT-A/B SRPC-3525-DEC_2007_OP15

<<<SCMT Cement Evaluation Information Summary>>>

Sonde Serial Number	SCMS-CB 8195		
Current Casing Size	4.50000 IN		
Casing Weight	10.5000 LB/F		
Expected CBL Amplitude in Free Pipe Section	79 MV	Minimum Sonic Amplitude	0.308463 MV (100% Cement)
			0.935163 MV (80% Cement)
		MAP Minimum Sonic Amplitude	2.90558 MV (100% Cement)
			5.89639 MV (80% Cement)
Master Calibration (Normalization)	Before Calibration (Adjustment)		
Date of Master Calibration	7-FEB-2005		
CBL Correction Factor	0.0655663	CBL Adjustment Factor (CBAF)	1.20000
MAP 1 Correction Factor	0.0935772	MAP Adjustment Factor (MPAF)	1.0
MAP 2 Correction Factor	0.106967		
MAP 3 Correction Factor	0.106098		
MAP 4 Correction Factor	0.108723		
MAP 5 Correction Factor	0.106564		
MAP 6 Correction Factor	0.116069		
MAP 7 Correction Factor	0.117807		
MAP 8 Correction Factor	0.0925897		

Parameters

DLIS Name	Description	Value
SCMT-CB: Slim Cement Mapping Tool, 1-11/16 OD		
BILI	Bond Index Level for Zone Isolation	0.8
CB3D	SCMT CBL 3 ft Peak Detection Mode	PEAK
CB3G	SCMT CBL 3 ft Peak Detection T0_Delay and Noise Gate	229.39 US
CB3T	SCMT CBL 3 ft Fixed Threshold Level	20 MV
CB5D	SCMT CBL 5 ft Peak Detection Mode	PEAK
CB5G	SCMT CBL 5 ft Peak Detection T0_Delay and Noise Gate	343.39 US
CB5T	SCMT CBL 5 ft Fixed Threshold Level	20 MV
CBLG	CBL Gate Width	40 US
CBRA	CBL LQC Reference Amplitude in Free Pipe	79 MV
CMCF	CBL Cement Type Compensation Factor	0.0851843
CMTC	SCMT Slow Channel Multiplexer Mode	SCAN
CMTM	SCMT Operating Mode	LOG
CSCS	SCMT Slow Channel Index	VCC
CTHI	Casing Thickness	0.229988 IN
DTF	Delta-T Fluid	205 US/F
FATT	Acoustic Attenuation due to Fluid	0 DB/F
FCF	CBL Fluid Compensation Factor	1
GOBO	Good Bond	0.935163 MV
MAPD	SCMT MAP Peak Detection Mode	PEAK
MAPG	SCMT MAP Peak Detection T0_Delay and Noise Gate	172.39 US
MAPT	SCMT MAP Fixed Threshold Level	30 MV
MATT	Maximum Attenuation	10.6967 DB/F
MCCF	MAP Cement Type Compensation Factor	0.207723
MCI	Minimum Cemented Interval for Isolation	1.25 FT
MMSA	MAP Minimum Sonic Amplitude	2.90558 MV
MSA	Minimum Sonic Amplitude	0.308463 MV
PEDE	Peak Detection On/Off Switch in Playback	OFF
VDLG	VDL Manual Gain	5
ZCMT	Acoustic Impedance of Cement	3.22 MRAY
System and Miscellaneous		
DO	Depth Offset for Playback	1.5 FT
PP	Playback Processing	NORMAL
TD	Total Depth	-50000 FT

Input DLIS Files

DEFAULT	SCMT_PSP_004PUP	FN:3	PRODUCER	17-Mar-2008 12:33	2512.0 FT	1302.5 FT
---------	-----------------	------	----------	-------------------	-----------	-----------

Output DLIS Files

DEFAULT	SCMT_PSP_005PUP	FN:4	PRODUCER	17-Mar-2008 12:37
---------	-----------------	------	----------	-------------------

Company: **COLEMAN OIL & GAS, INC.**

Schlumberger

Well: **ZUEGE 17-34**

Field: **WILDCAT**

County: **YUMA**

State: **COLORADO**

CEMENT BOND LOG

GAMMA RAY CCL