

# LITHOLOGY STRIP LOG

## WellSight Systems

Scale 1:240 (5"=100') Imperial

Well Name: MEAGHER 3 36-1 (TAIGA MOUNTAIN)

Location: SE NE, SEC 36, T1N, R104W 6TH PM, RIO BLANCO COUNTY, CO

Licence Number: API# 103--10768-00

Region: WEAVER RIDGE

Spud Date: 06/20/06

Drilling Completed: 06/29/06

Surface Coordinates: 1337' FNL ,196' FEL, SECTION 36 - T1N - R104W

LAT. 40.015908 DEG N., LONG. 109.009469 DEG W.

Bottom Hole Coordinates: 437.01N 633 W (900' FNL, 633' FEL)

Ground Elevation (ft): 6543'

K.B. Elevation (ft): 6112'

Logged Interval (ft): 454' To: 5930 ' Total Depth (ft): 5930'

Formation: GREEN RIVER, MESAVERDE, SEGO, BUCK TONGUE, CASTLEGATE, MANCOS

Type of Drilling Fluid: FRESH WATER, GEL/CHEM

Printed by WellSight Log Viewer from WellSight Systems 1-800-447-1534 www.WellSight.com

### OPERATOR

Company: KGH OPERATING COMPANY

Address: PO BOX 2235

BILLINGS, MT 59103

### GEOLOGIST

Name: WARD CAMPBELL / DAN RODEN

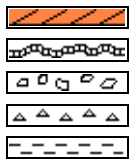
Company: WILDCAT EXPLORATION WELLOGGING CO.

Address: P.O. BOX 186

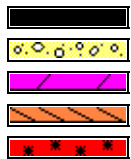
THERMOPOLIS, WYOMING

82443

### ROCK TYPES



Anhy  
Bent  
Brec  
Cht  
Clyst



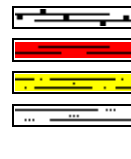
Coal  
Congl  
Dol  
Gyp  
Igne



Lmst  
Meta  
Mrlst  
Salt  
Shale



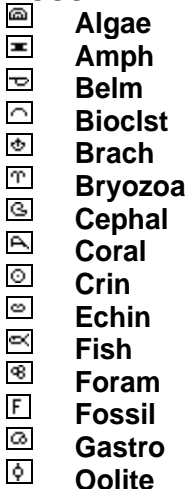
Shcol  
Shgy  
Sltst  
Ss  
Till



carb sh  
red sh  
shlyss  
Sltly sh

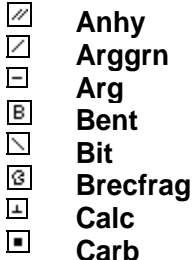
### ACCESSORIES

#### FOSSIL



Ostra  
Pelec  
Pellet  
Pisolite  
Plant  
Strom

#### MINERAL



Chtdk  
Chtlt  
Dol  
Feldspar  
Ferrpel  
Ferr  
Glau  
Gyp  
Hvymin  
Kaol  
Marl  
Minxl  
Nodule  
Phos  
Pyr  
Salt



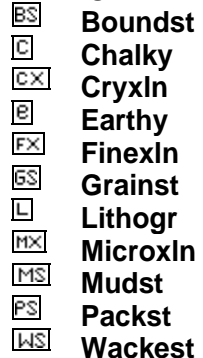
Sandy  
Silt  
Sil  
Sulphur  
Tuff

#### STRINGER



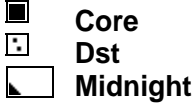
Ssstrg

#### TEXTURE



## OTHER SYMBOLS

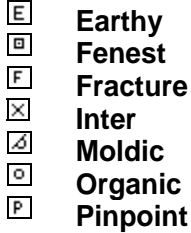
## INTERVALS



## EVENTS



## POROSITY TYPE

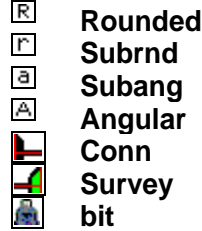


Vuggy

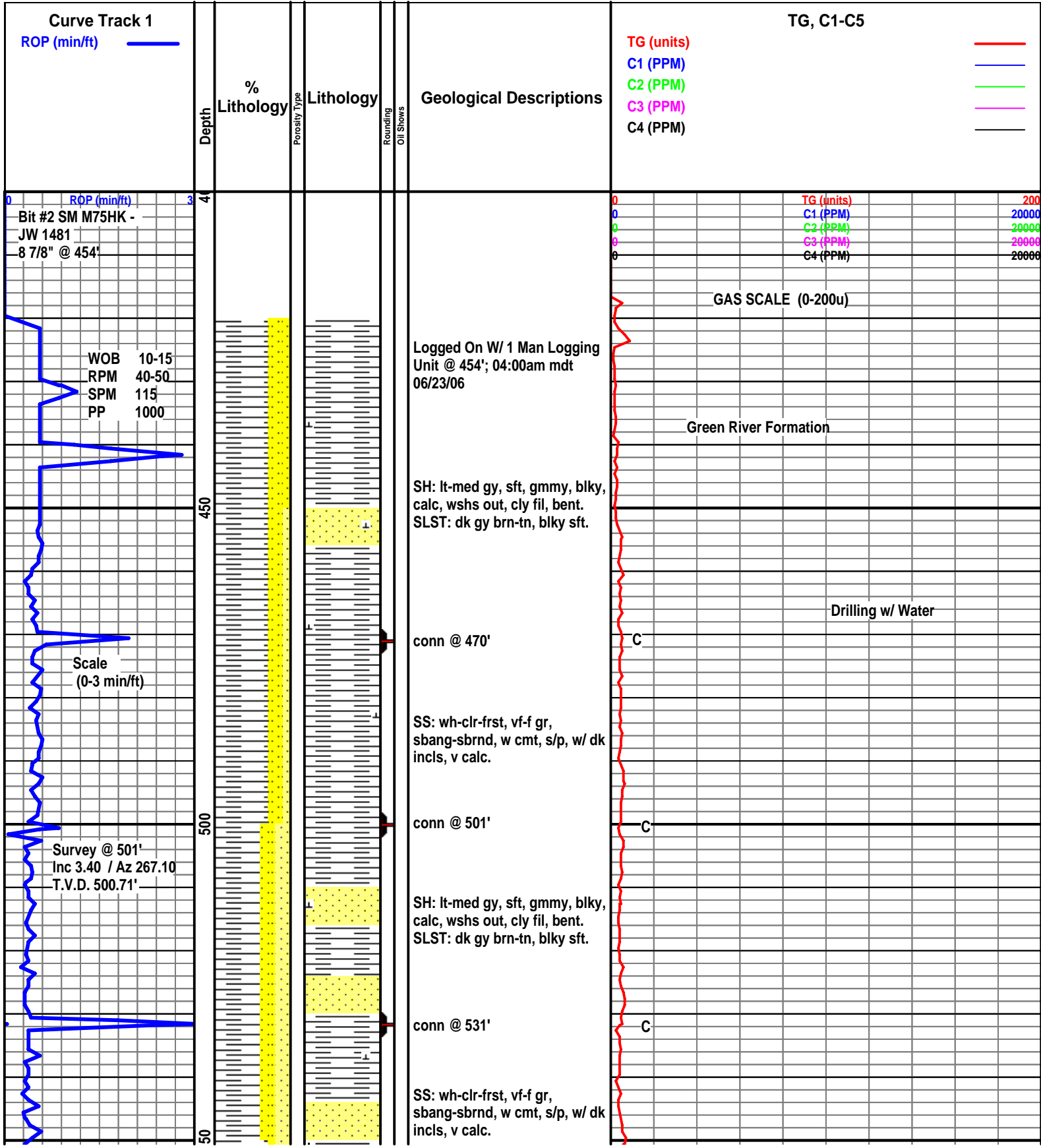
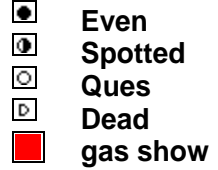
## SORTING

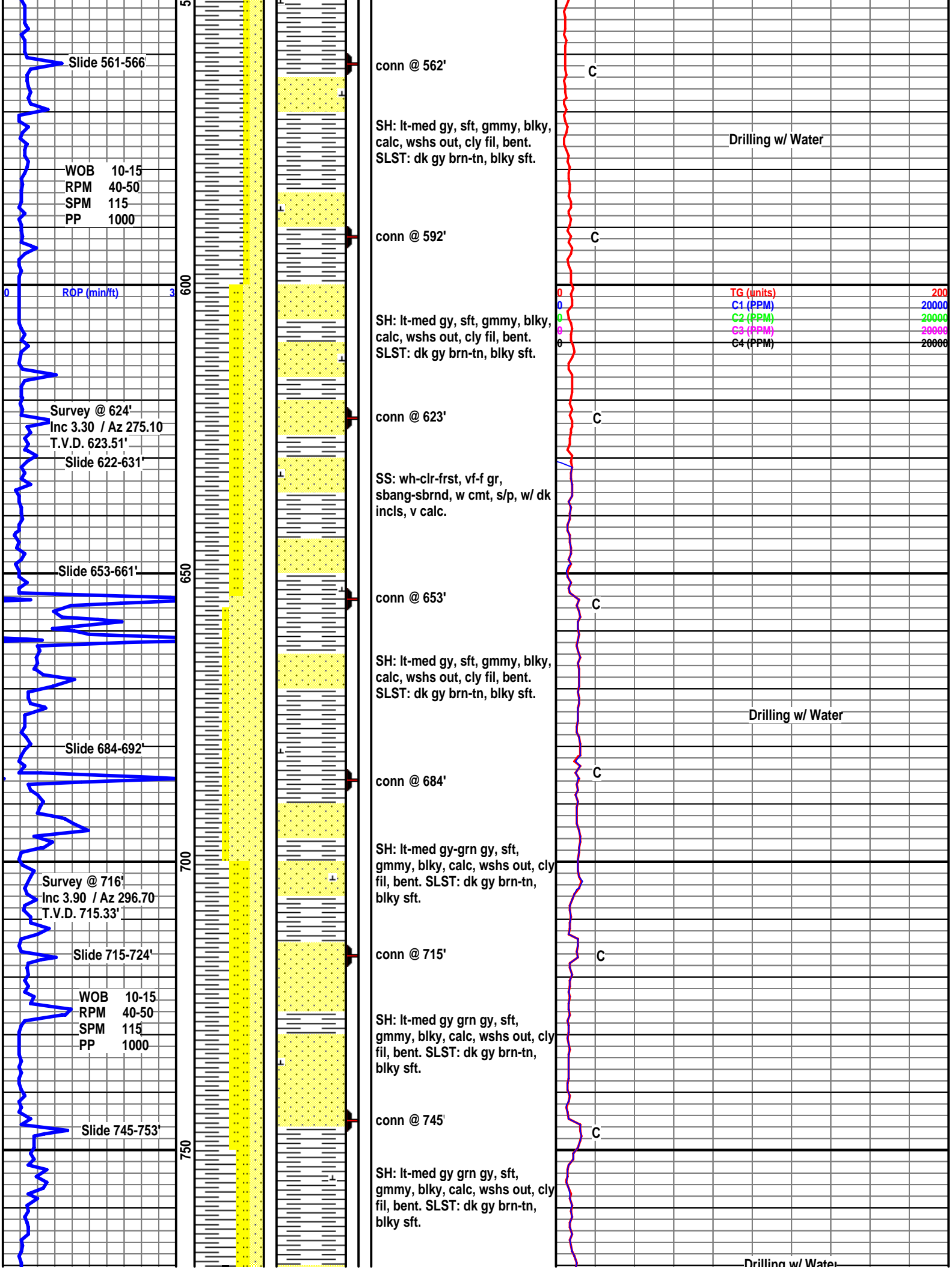


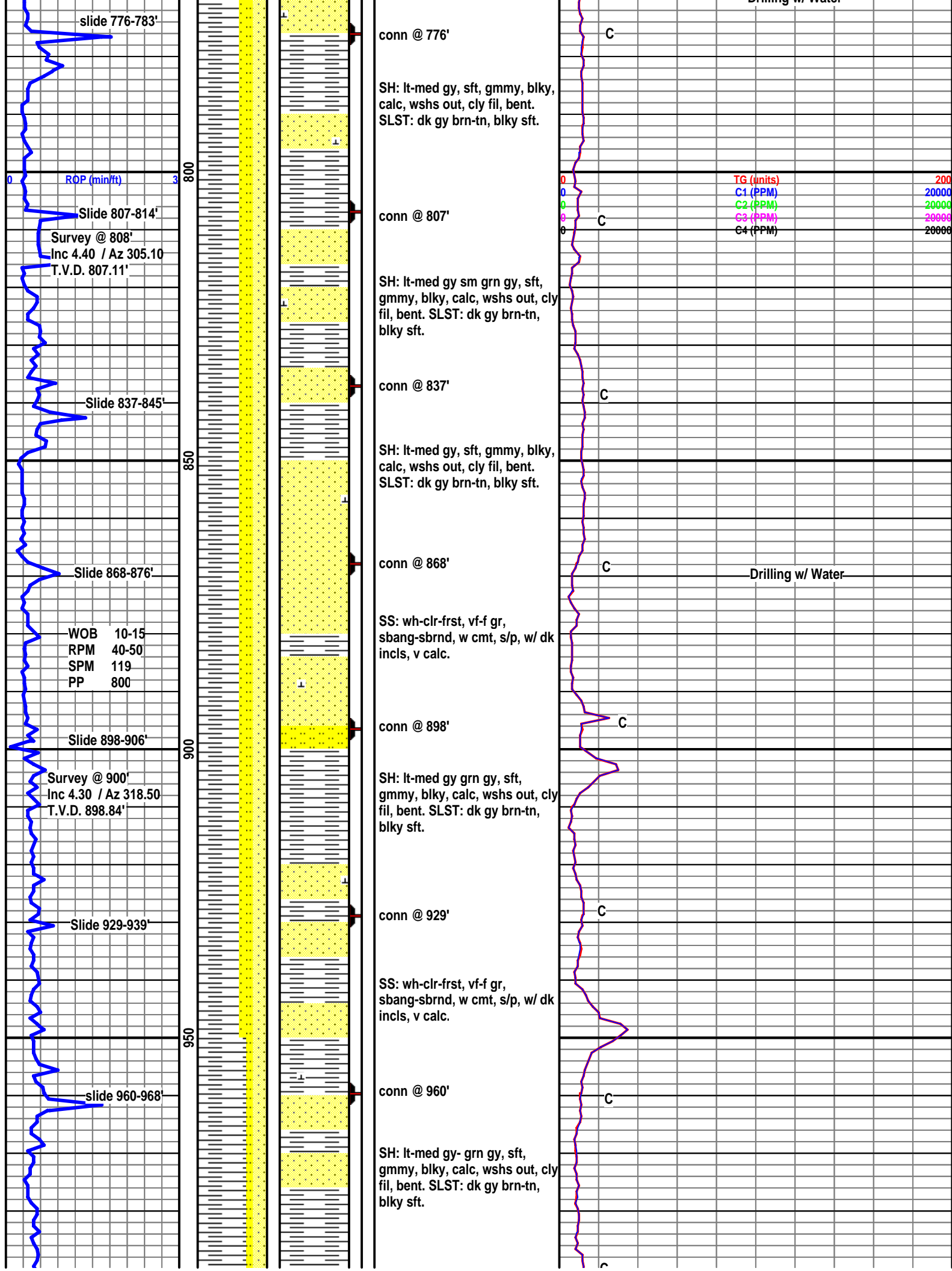
## ROUNDING

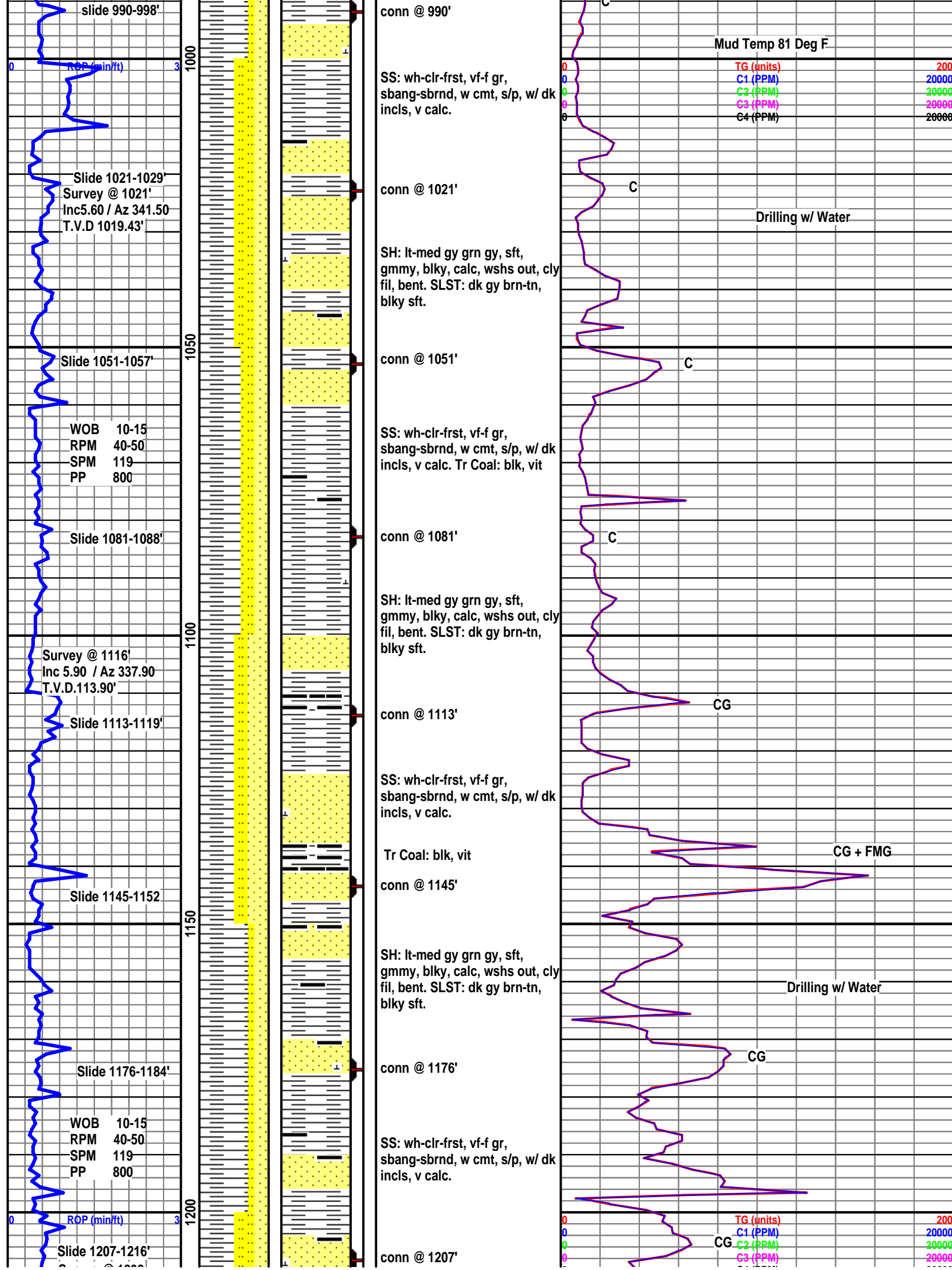


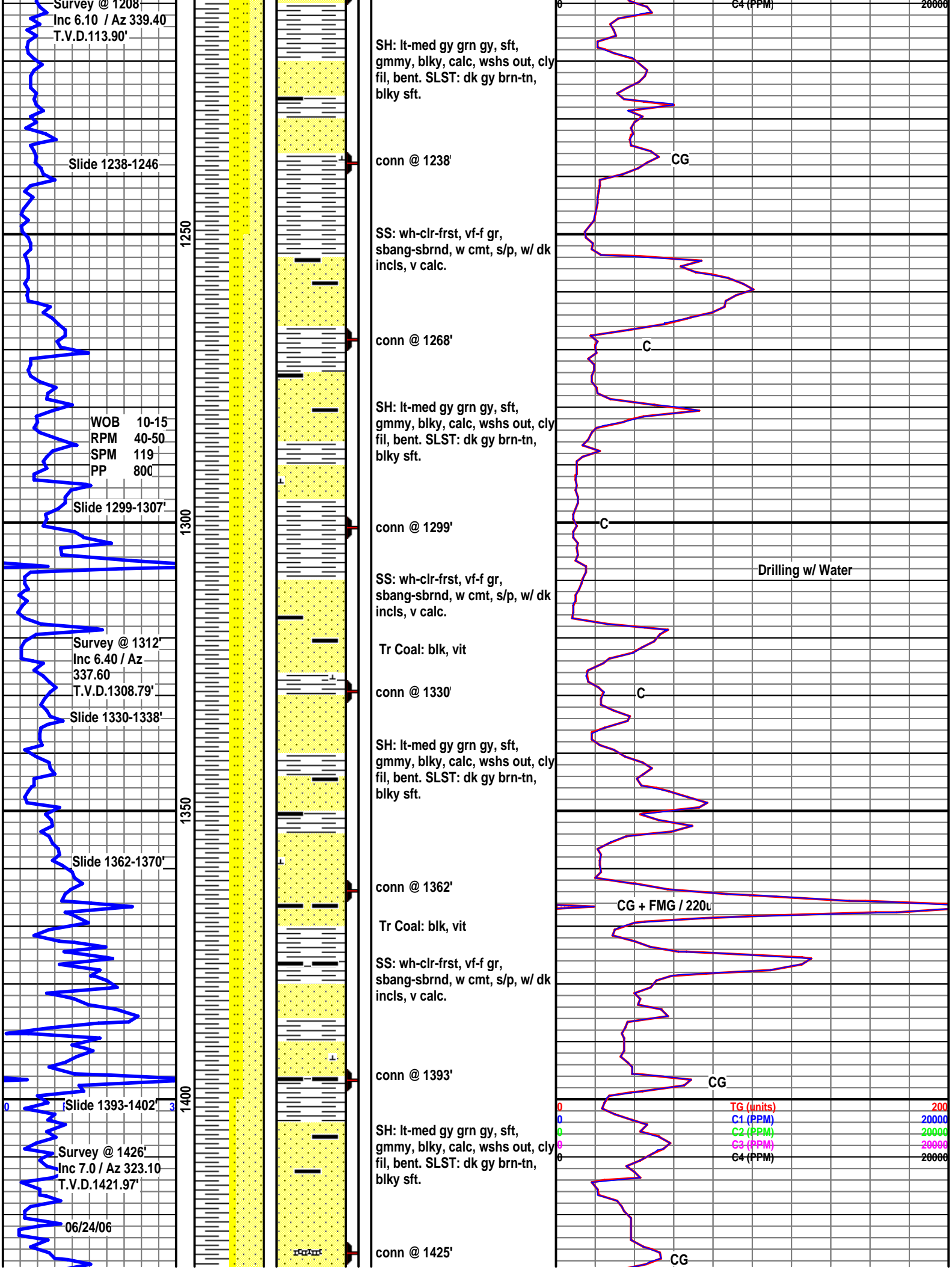
## OIL SHOWS



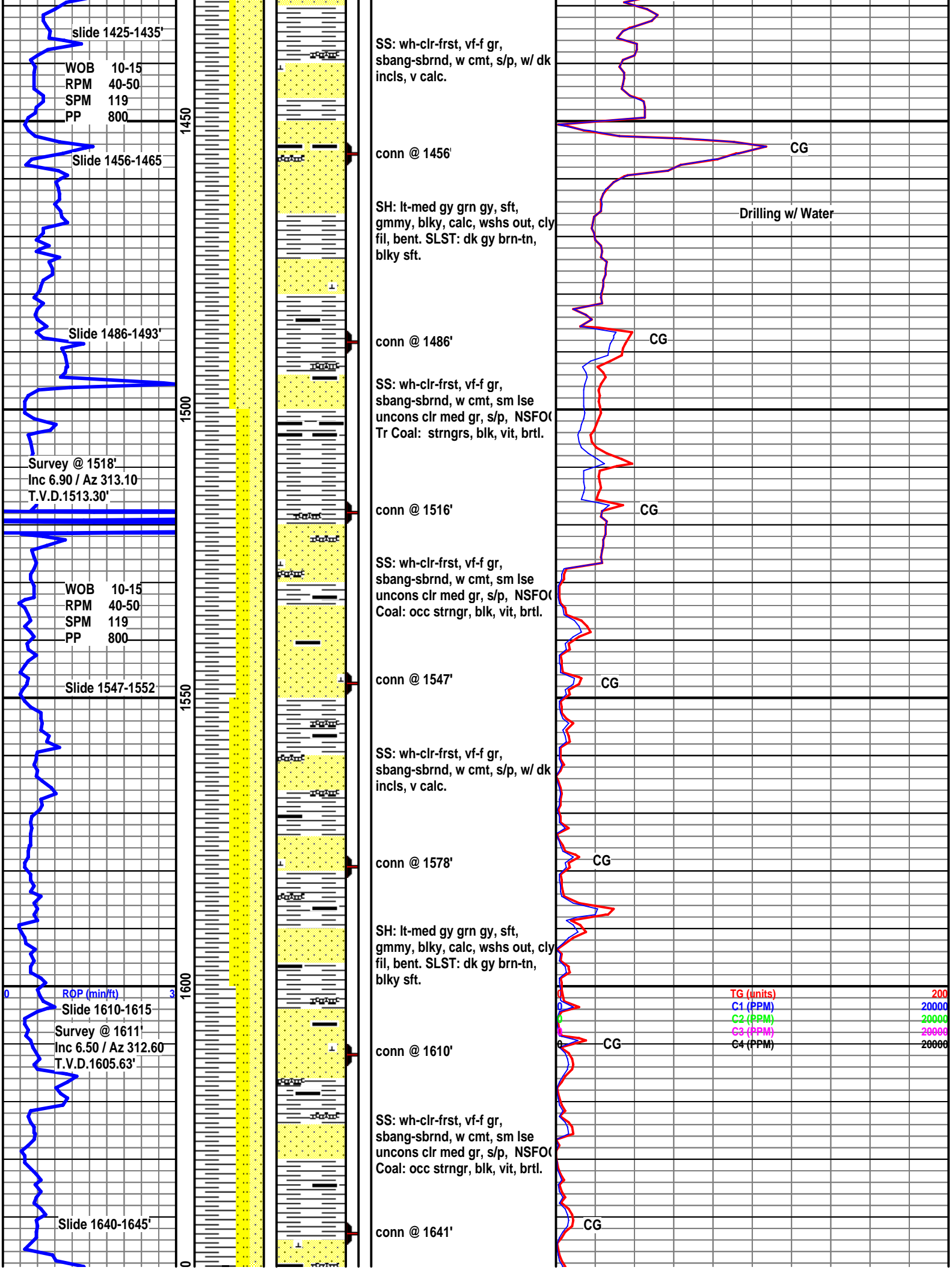












slide 1425-1435'

WOB 10-15  
RPM 40-50  
SPM 119  
PP 800

Slide 1456-1465

Slide 1486-1493'

Survey @ 1518'  
Inc 6.90 / Az 313.10  
T.V.D.1513.30'

WOB 10-15  
RPM 40-50  
SPM 119  
PP 800

Slide 1547-1552

ROP (min/ft)  
Slide 1610-1615  
Survey @ 1611'  
Inc 6.50 / Az 312.60  
T.V.D.1605.63'

Slide 1640-1645'

SS: wh-clr-frst, vf-f gr,  
sbang-sbrnd, w cmt, s/p, w/ dk  
incls, v calc.

conn @ 1456'

SH: lt-med gy grn gy, sft,  
gmmy, blk, calc, wshs out, cly  
fil, bent. SLST: dk gy brn-tn,  
blk sft.

conn @ 1486'

SS: wh-clr-frst, vf-f gr,  
sbang-sbrnd, w cmt, sm lse  
uncons clr med gr, s/p, NSFO  
Tr Coal: strngrs, blk, vit, brtl.

conn @ 1516'

SS: wh-clr-frst, vf-f gr,  
sbang-sbrnd, w cmt, sm lse  
uncons clr med gr, s/p, NSFO  
Coal: occ strngr, blk, vit, brtl.

conn @ 1547'

SS: wh-clr-frst, vf-f gr,  
sbang-sbrnd, w cmt, s/p, w/ dk  
incls, v calc.

conn @ 1578'

SH: lt-med gy grn gy, sft,  
gmmy, blk, calc, wshs out, cly  
fil, bent. SLST: dk gy brn-tn,  
blk sft.

conn @ 1610'

SS: wh-clr-frst, vf-f gr,  
sbang-sbrnd, w cmt, sm lse  
uncons clr med gr, s/p, NSFO  
Coal: occ strngr, blk, vit, brtl.

conn @ 1641'

CG

Drilling w/ Water

CG

CG

CG

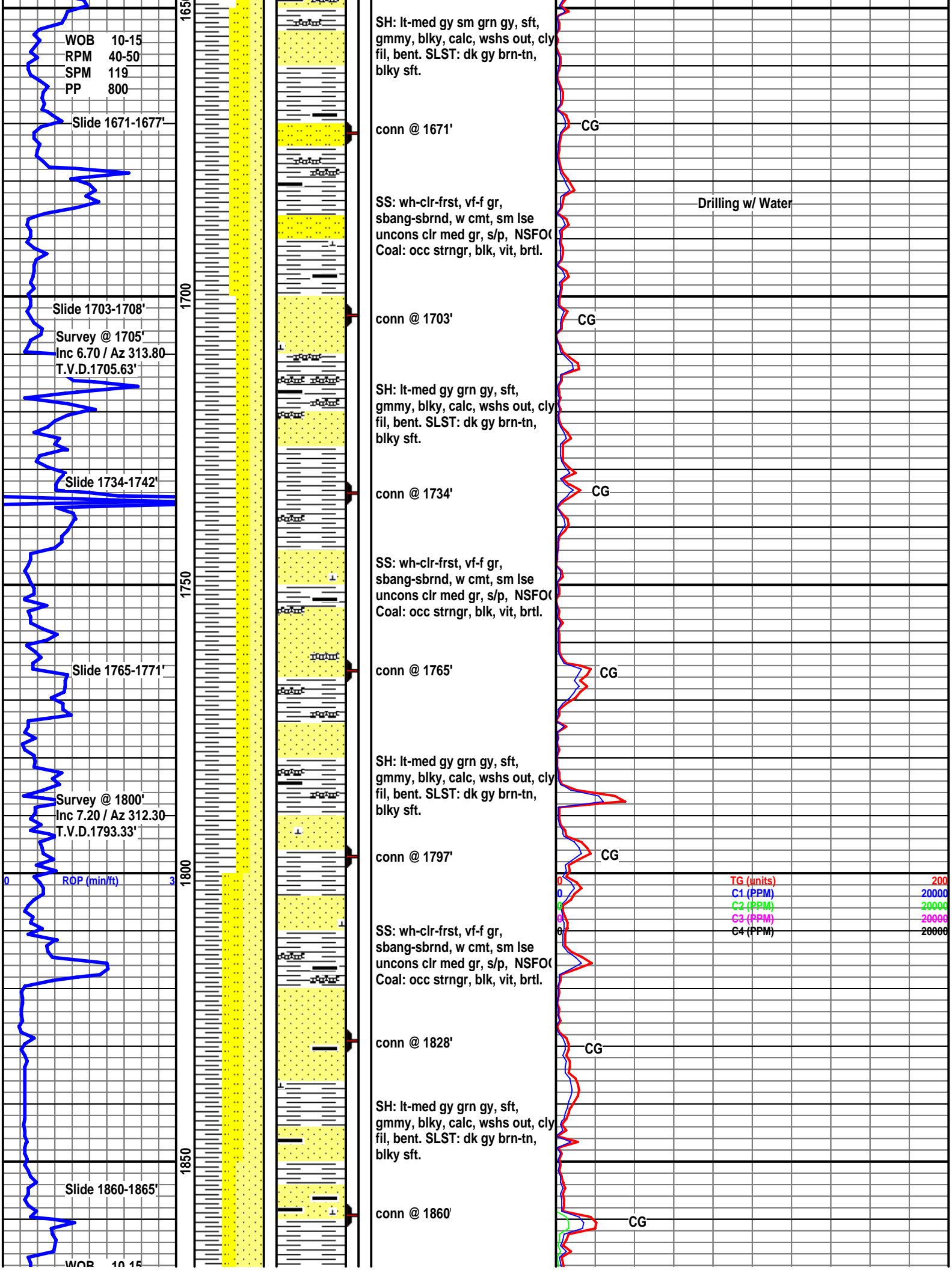
CG

CG

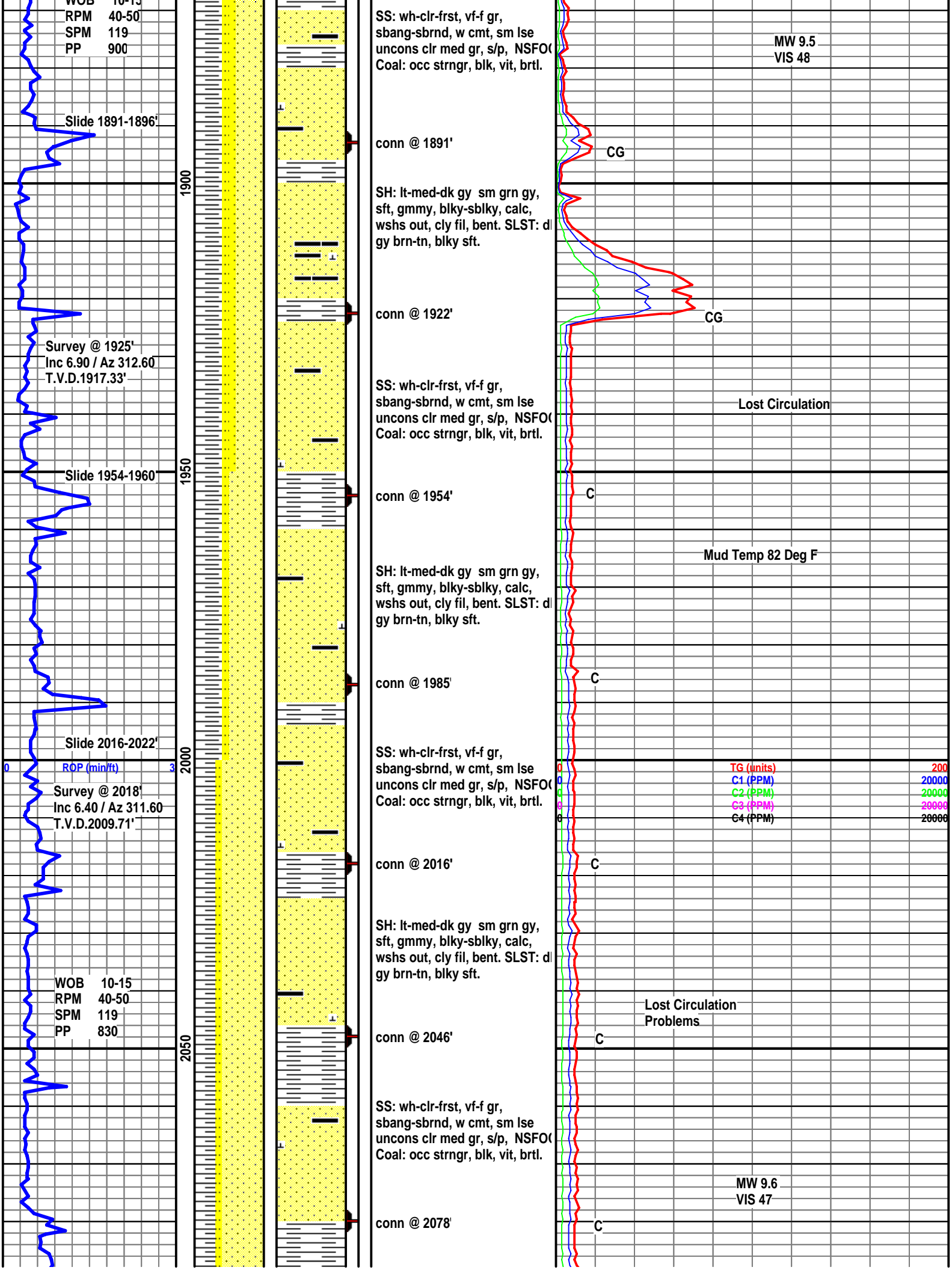
CG

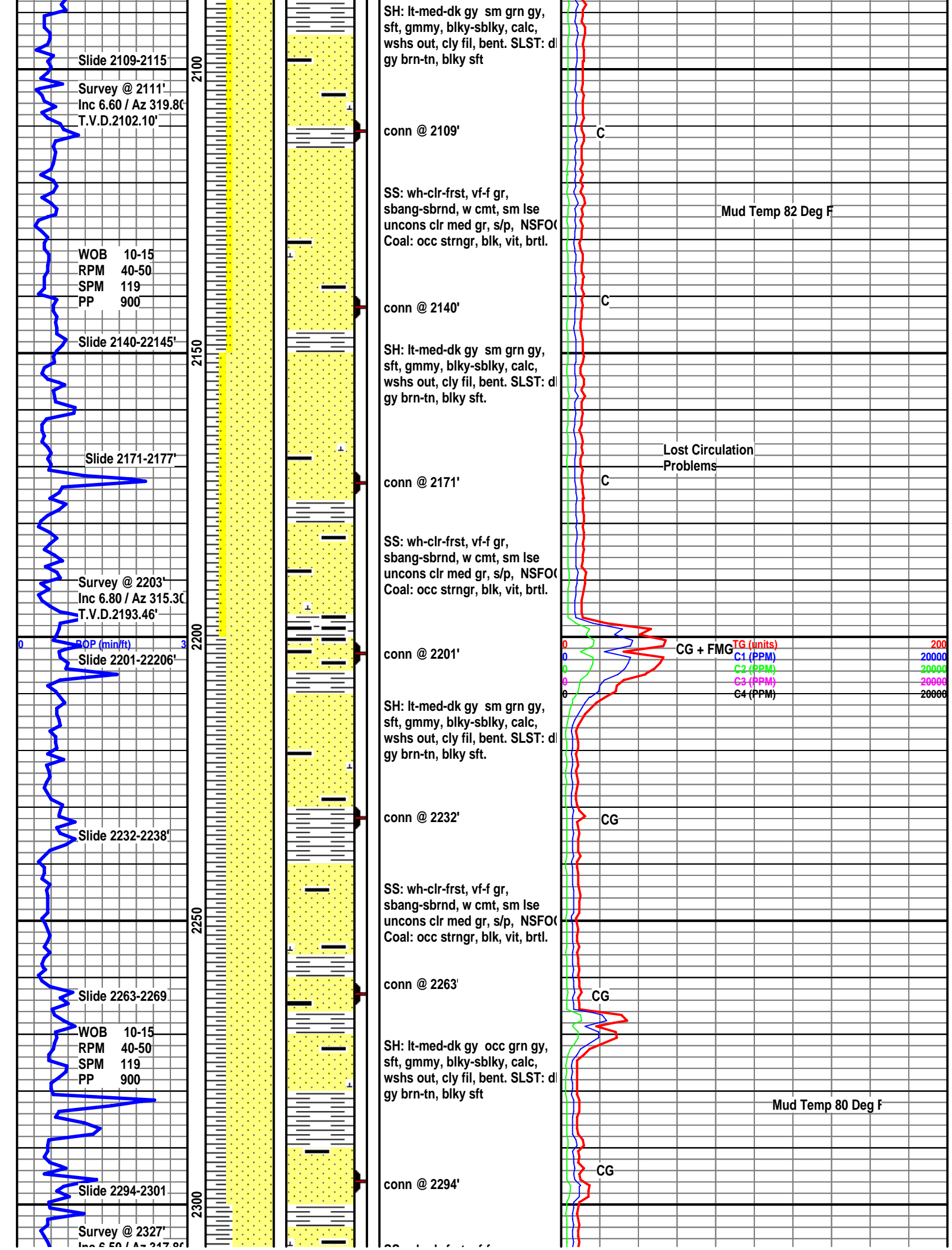
TG (units)  
C1 (PPM)  
C2 (PPM)  
C3 (PPM)  
C4 (PPM)

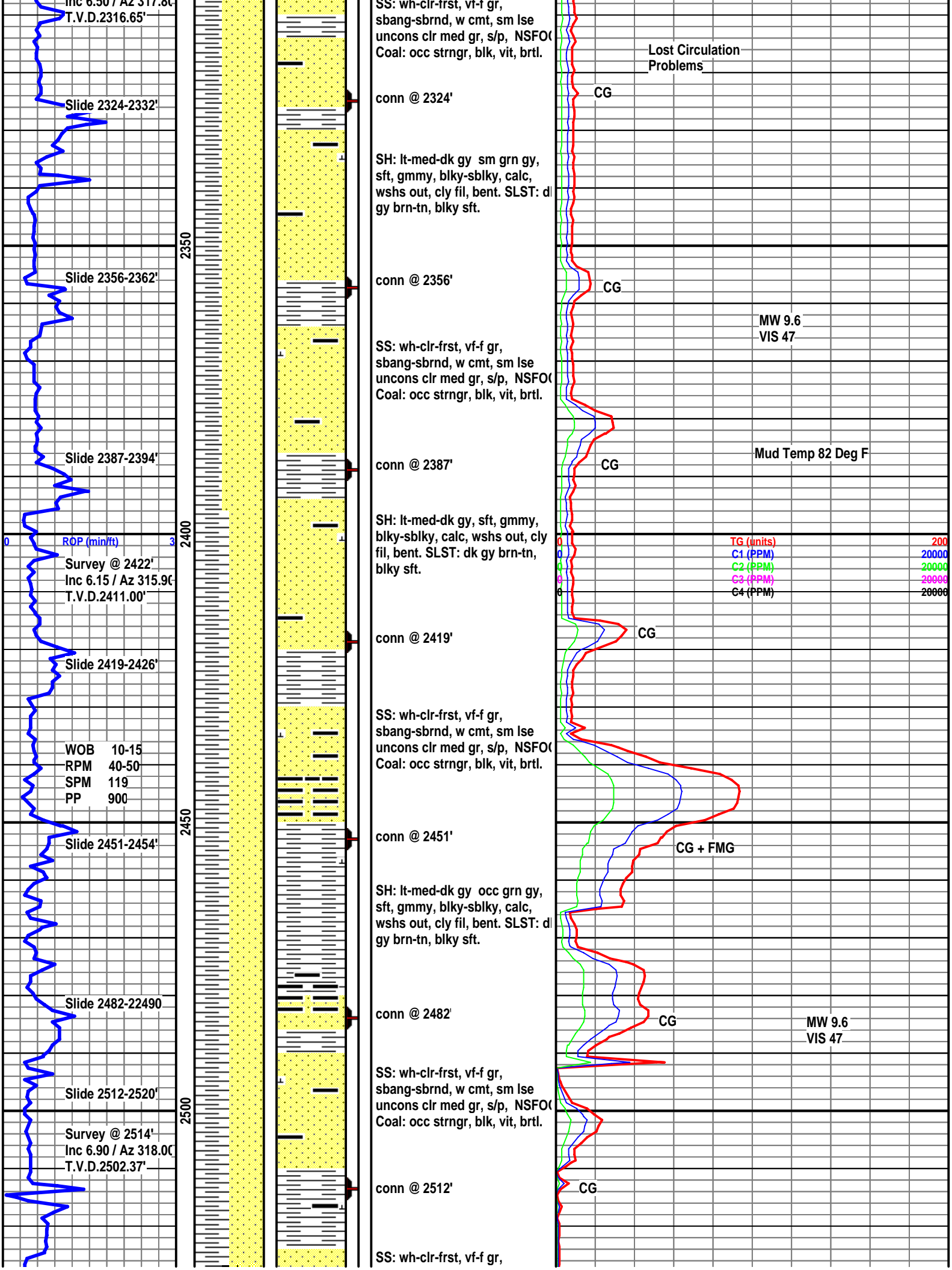
200  
20000  
20000  
20000  
20000

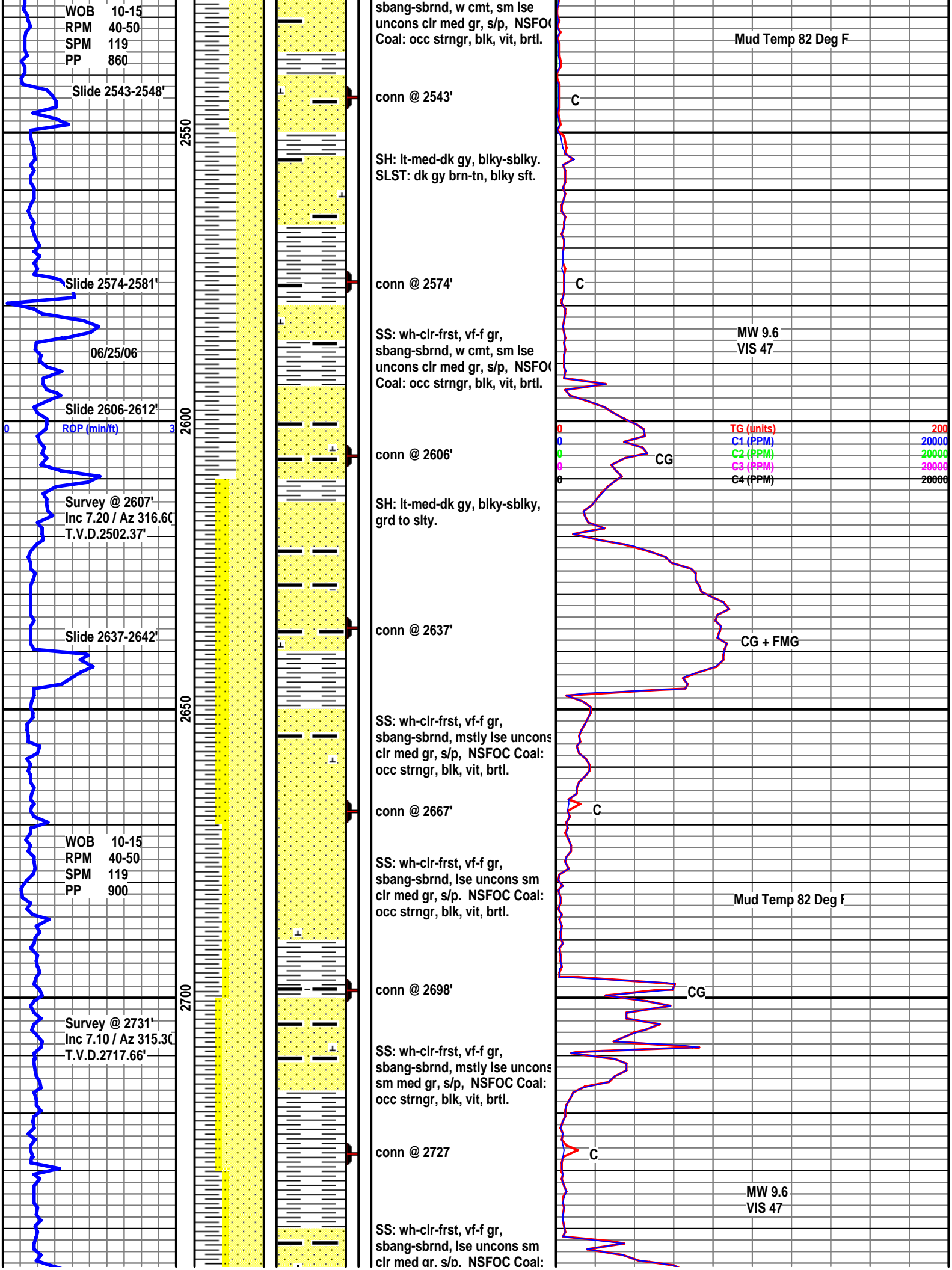












WOB 10-15  
RPM 40-50  
SPM 119  
PP 860

Slide 2543-2548'

Slide 2574-2581'

06/25/06

Slide 2606-2612'

ROP (min/ft)

Survey @ 2607'  
Inc 7.20 / Az 316.60  
T.V.D.2502.37'

Slide 2637-2642'

WOB 10-15  
RPM 40-50  
SPM 119  
PP 900

Survey @ 2731'  
Inc 7.10 / Az 315.30  
T.V.D.2717.66'

sbang-sbrnd, w cmt, sm lse  
uncons clr med gr, s/p, NSFOC  
Coal: occ strngr, blk, vit, brtl.

conn @ 2543'

SH: lt-med-dk gy, blk, vit, brtl.  
SLST: dk gy brn-tn, blk, vit.

conn @ 2574'

SS: wh-clr-frst, vf-f gr,  
sbang-sbrnd, w cmt, sm lse  
uncons clr med gr, s/p, NSFOC  
Coal: occ strngr, blk, vit, brtl.

conn @ 2606'

SH: lt-med-dk gy, blk, vit, brtl.  
grd to slty.

conn @ 2637'

SS: wh-clr-frst, vf-f gr,  
sbang-sbrnd, mstly lse uncons  
clr med gr, s/p, NSFOC Coal:  
occ strngr, blk, vit, brtl.

conn @ 2667'

SS: wh-clr-frst, vf-f gr,  
sbang-sbrnd, lse uncons sm  
clr med gr, s/p, NSFOC Coal:  
occ strngr, blk, vit, brtl.

conn @ 2698'

SS: wh-clr-frst, vf-f gr,  
sbang-sbrnd, mstly lse uncons  
sm med gr, s/p, NSFOC Coal:  
occ strngr, blk, vit, brtl.

conn @ 2727'

SS: wh-clr-frst, vf-f gr,  
sbang-sbrnd, lse uncons sm  
clr med ar. s/p. NSFOC Coal:

Mud Temp 82 Deg F

MW 9.6  
VIS 47

Mud Temp 82 Deg F

MW 9.6  
VIS 47

TG (units)  
C1 (PPM)  
C2 (PPM)  
C3 (PPM)  
C4 (PPM)

200  
20000  
20000  
20000  
20000

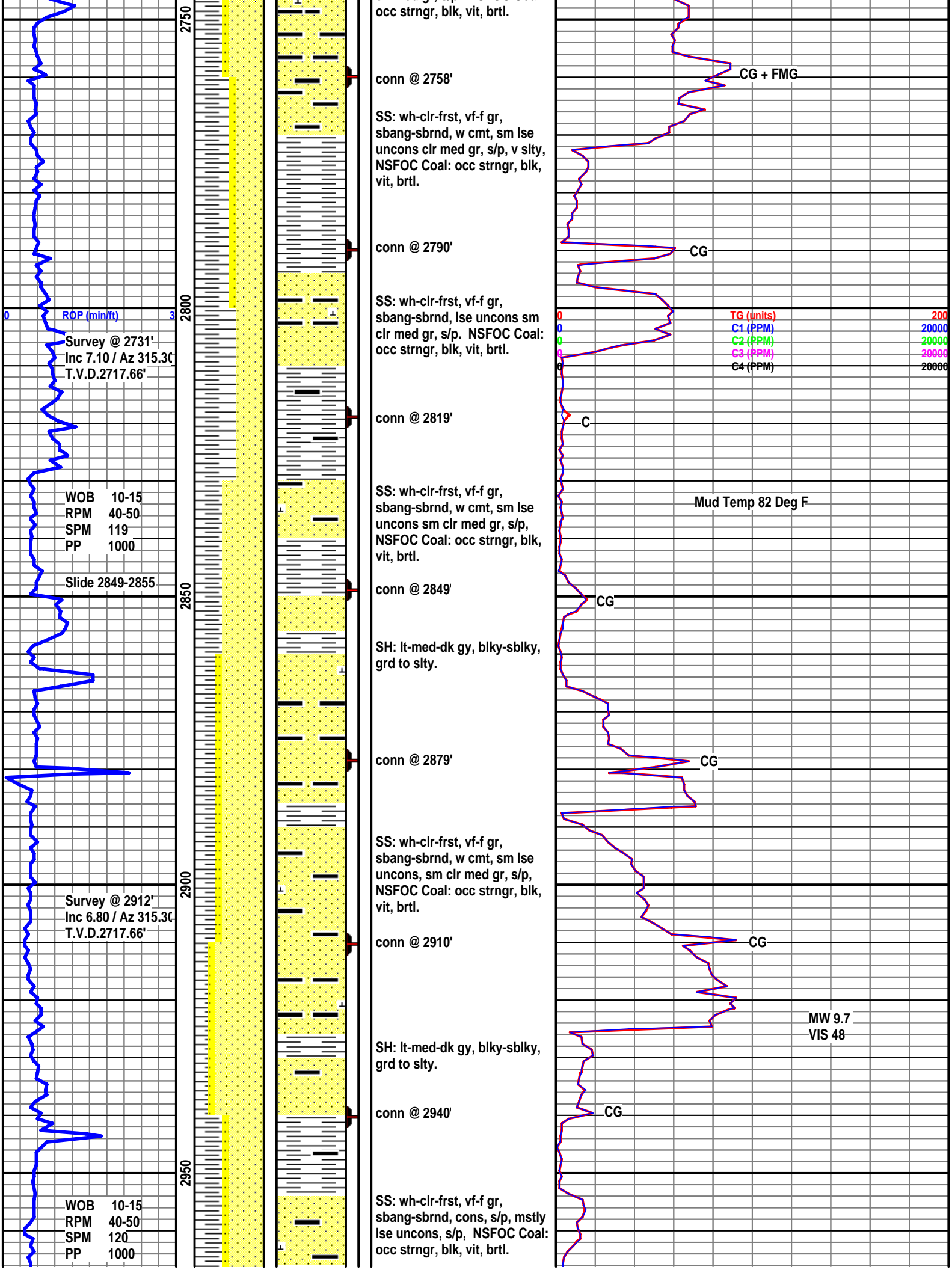
CG

CG + FMG

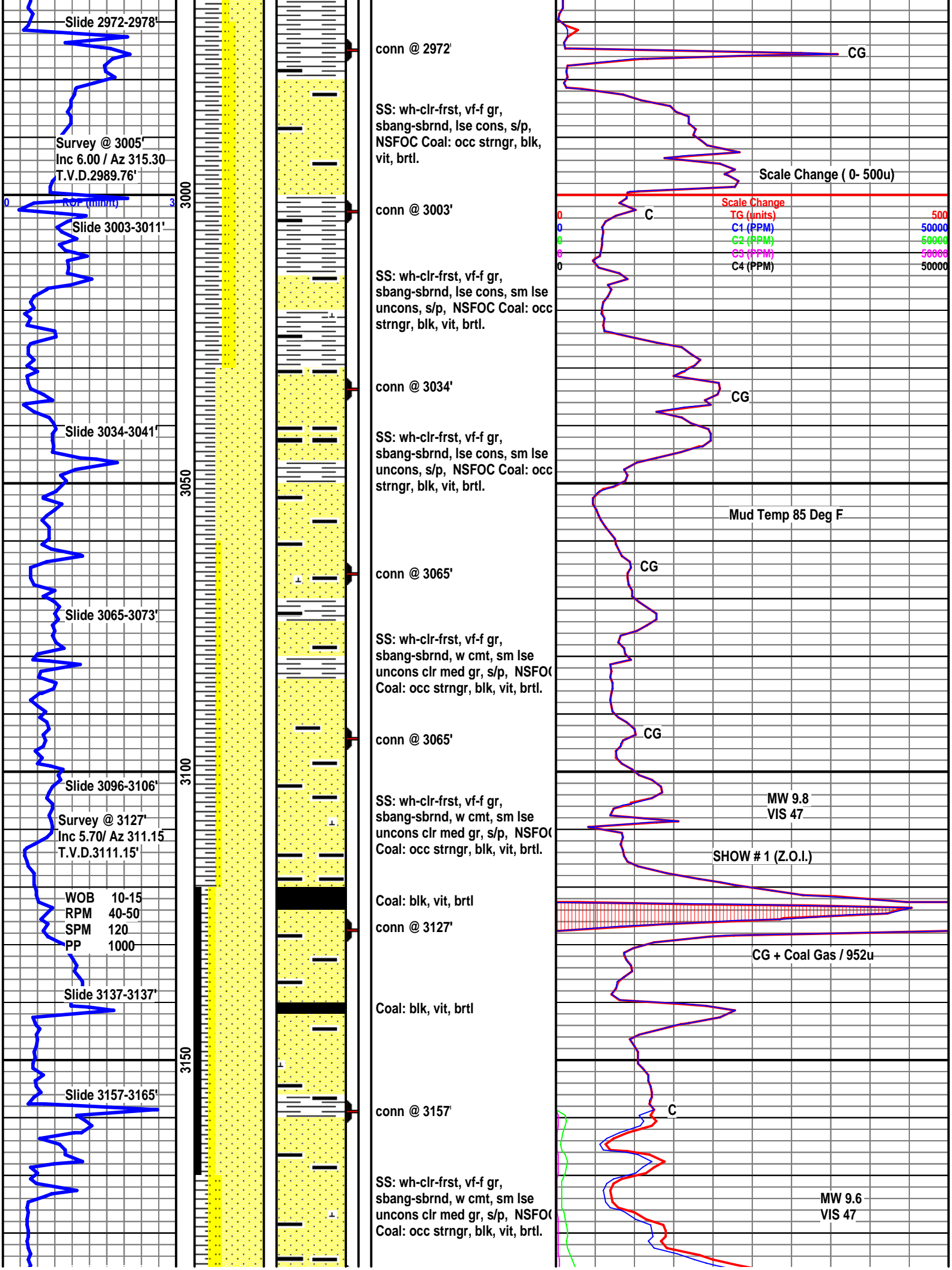
C

CG

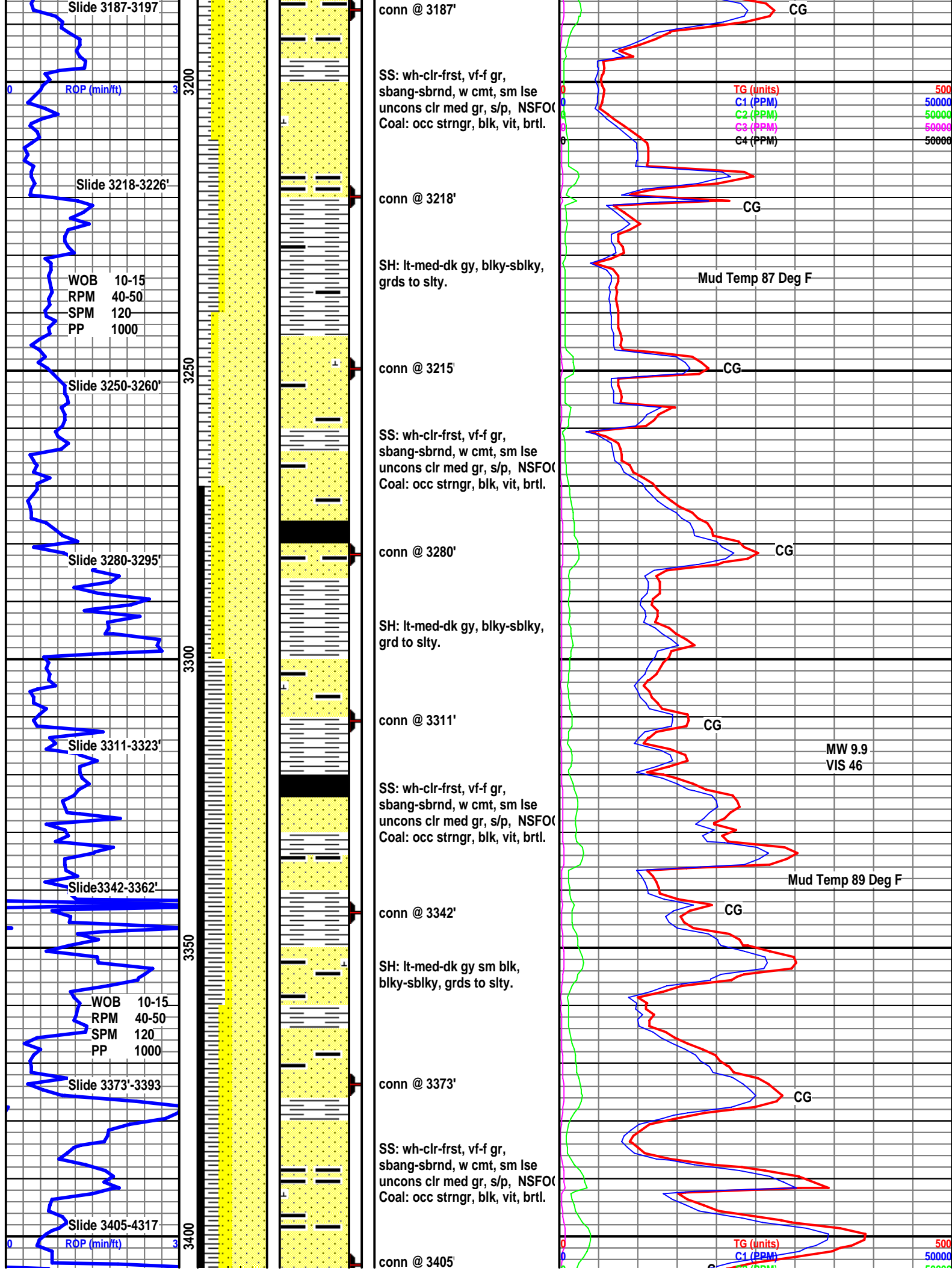
C

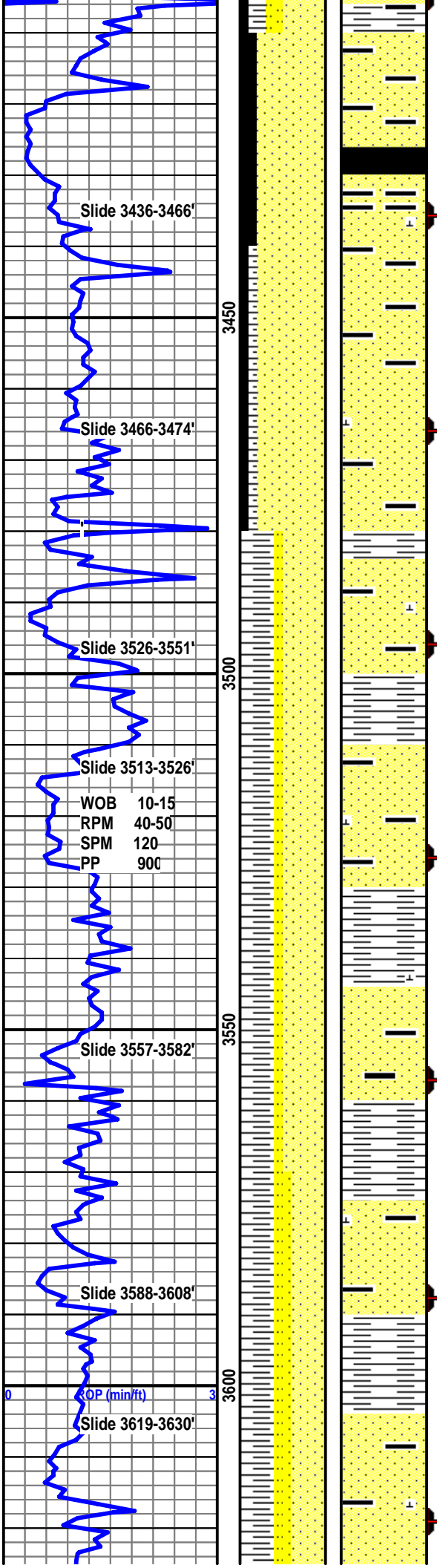












SS: wh-clr-frst, vf-f gr,  
sbang-sbrnd, w cmt, sm lse  
uncons clr med gr, s/p, NSFOC  
Coal: occ strngr, blk, vit, brtl.

Coal: interbdd, blk ,vit, brtl

conn @ 3436'

SS: wh-clr-frst, vf-f gr,  
sbang-sbrnd, w cmt, abndt lse  
uncons clr med gr, s/p, NSFOC  
Coal: occ strngr, blk, vit, brtl.

conn @ 3466'

SH: lt-med-dk gy sm blk,  
blky-sblky, grds to slty. SLST:  
dk brn- brnsh gry, blky-sblky,  
sft-frm

conn @ 3496'

SLST: dk brn- brnsh gry,  
blky-sblky, sft-frm

conn @ 3526'

SH: lt-med-dk gy sm blk,  
blky-sblky, grds to slty. SLST:  
dk brn- brnsh gry, blky-sblky,  
sft-frm

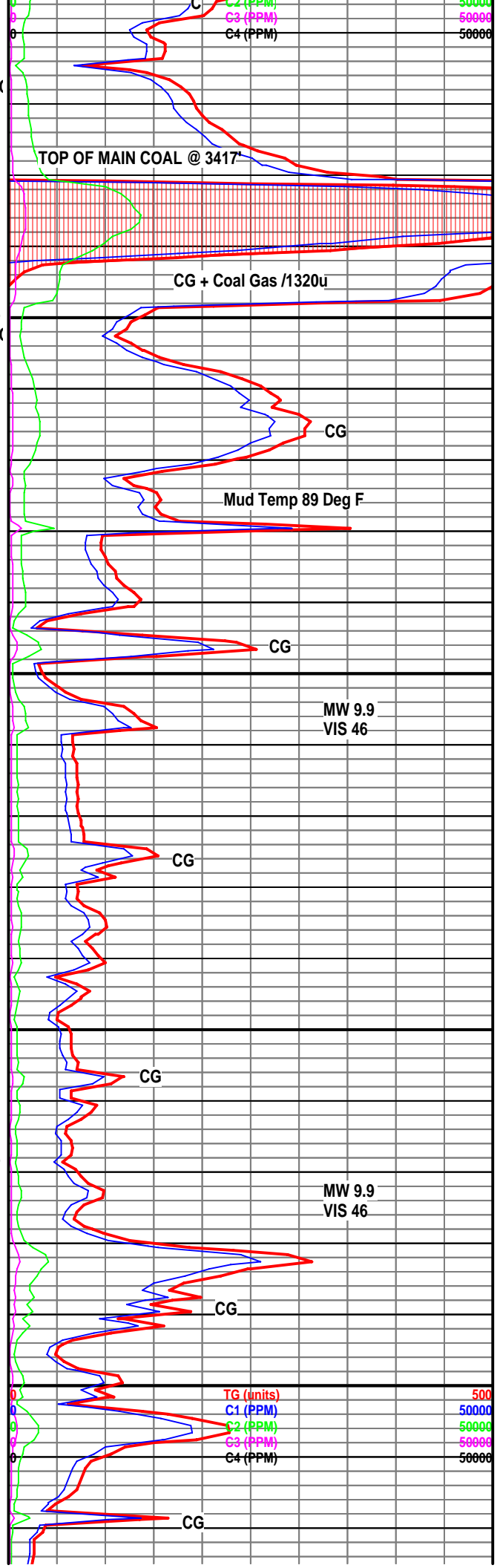
conn @ 3557'

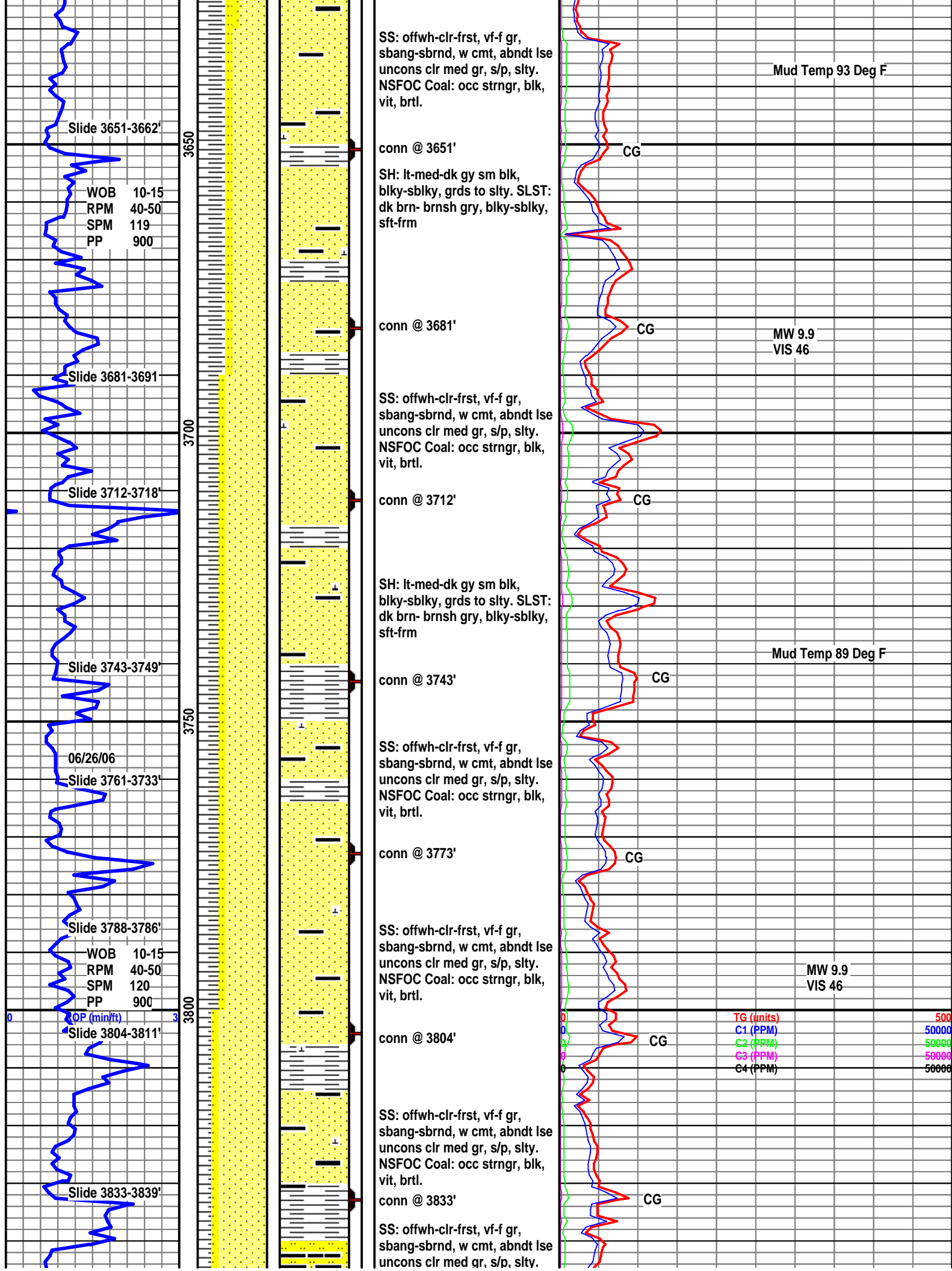
SS: offwh-clr-frst, vf-f gr,  
sbang-sbrnd, w cmt, abndt lse  
uncons clr med gr, s/p, slty.  
NSFOC Coal: occ strngr, blk,  
vit, brtl.

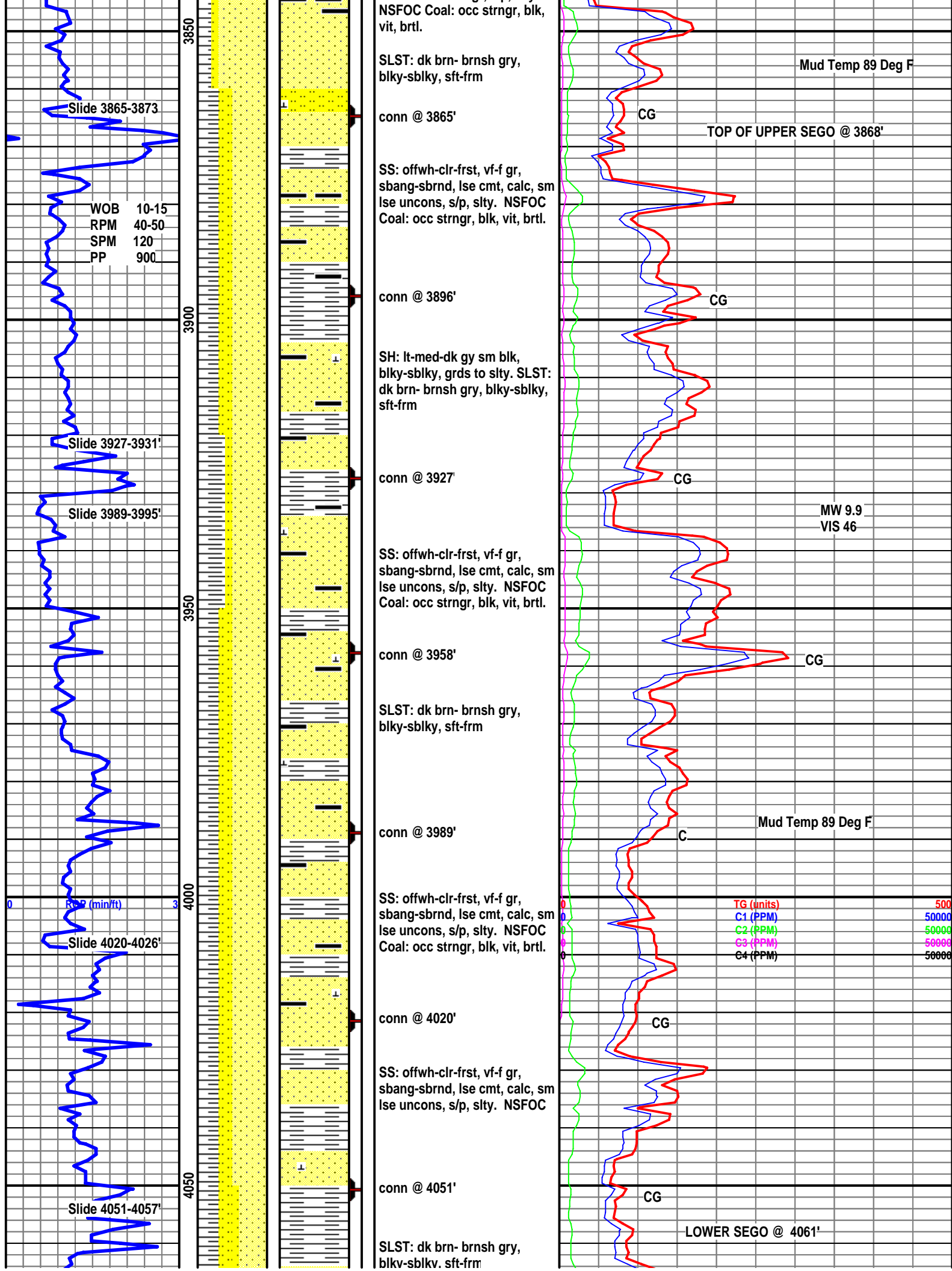
conn @ 3588'

SH: lt-med-dk gy sm blk,  
blky-sblky, grds to slty. SLST:  
dk brn- brnsh gry, blky-sblky,  
sft-frm

conn @ 3619'







WOB 10-15  
RPM 40-50  
SPM 120  
PP 900

Slide 4081-4086'

conn @ 4081'

SS: offwh-clr-frst, vf-f gr,  
sbang-sbrnd, lse cmt, calc, sm  
lse uncons, s/p, slty. NSFOC

MW 9.9  
VIS 46

Slide 4112-4117

conn @ 4112'

SS: offwh-clr-frst, vf-f gr,  
sbang-sbrnd, lse cmt, calc, sm  
lse uncons, s/p, slty. NSFOC

CG

Mud Temp 91 Deg F

Slide 4143-4150'

conn @ 4143'

SLST: dk brn- brnsh gry,  
blky-sblky, sft-frm

CG

BUCK TONGUE @ 4148

Slide 4143-4150'

conn @ 4174'

SLST: dk brn- brnsh gry,  
blky-sblky, sft-frm

CG

Slide 4174-4148'

conn @ 4204'

SH: lt-med-dk gy sm blk,  
blky-sblky, grds to slty. SLST:  
dk brn- brnsh gry, blky-sblky,  
sft-frm

CG

TG (units) 500  
C1 (PPM) 50000  
C2 (PPM) 50000  
C3 (PPM) 50000  
C4 (PPM) 50000

WOB 10-15  
RPM 40-50  
SPM 119  
PP 875

Slide 4236-4244'

conn @ 4236'

SH: lt-med-dk gy sm blk,  
blky-sblky,rthy, grds to slty.  
SLST: dk brn- brnsh gry,  
blky-sblky, sft-frm

CG

MW 9.9  
VIS 46

Mud Temp 90 Deg F

Slide 4268-4278'

conn @ 4268'

SH: lt-med-dk gy sm blk,  
blky-sblky,rthy, grds to slty.  
SLST: dk brn- brnsh gry,  
blky-sblky, sft-frm

C



