

Company		El Paso Energy Raton, LLC	
Well		VPR "ST" 38	
Field		Purgatorie River	
County		Las Animas	
State		Colorado	
Location:		API # :	
Permanent Datum		SEC 8 TWP 35S RGE 65W	
Log Measured From		Ground Level	
Drilling Measured From		Ground Level	
Elevation		6855'	
Other Services		PE	
Date		5/26/05	
Run Number		One	
Depth Driller		1255'	
Depth Logger		1254'	
Bottom Logged Interval		1252'	
Top Log Interval		Surface Casing	
Casing Driller		8 5/8" @ 335'	
Casing Logger		336'	
Bit Size		7 7/8"	
Type Fluid in Hole		Water	
Density / Viscosity		////	
pH / Fluid Loss		////	
Source of Sample		////	
Rm @ Meas. Temp		////	
Rmf @ Meas. Temp		////	
Rmc @ Meas. Temp		////	
Source of Rmf / Rmc		////	
Rm @ BHT		////	
Time Circulation Stopped		2.45 A.M.	
Time Logger on Bottom		4.00 A.M.	
Maximum Recorded Temperature		////	
Equipment Number		T720	
Location		Trinidad	
Recorded By		S. Allen	
Witnessed By		Mr. Ralph Stansbury	

<<< Fold Here >>>

All interpretations are opinions based on inferences from electrical or other measurements and we cannot and do not guarantee the accuracy or correctness of any interpretation, and we shall not, except in the case of gross or willful negligence on our part, be liable or responsible for any loss, costs, damages, or expenses incurred or sustained by anyone resulting from any interpretation made by any of our officers, agents or employees. These interpretations are also subject to our general terms and conditions set out in our current Price Schedule.

Comments

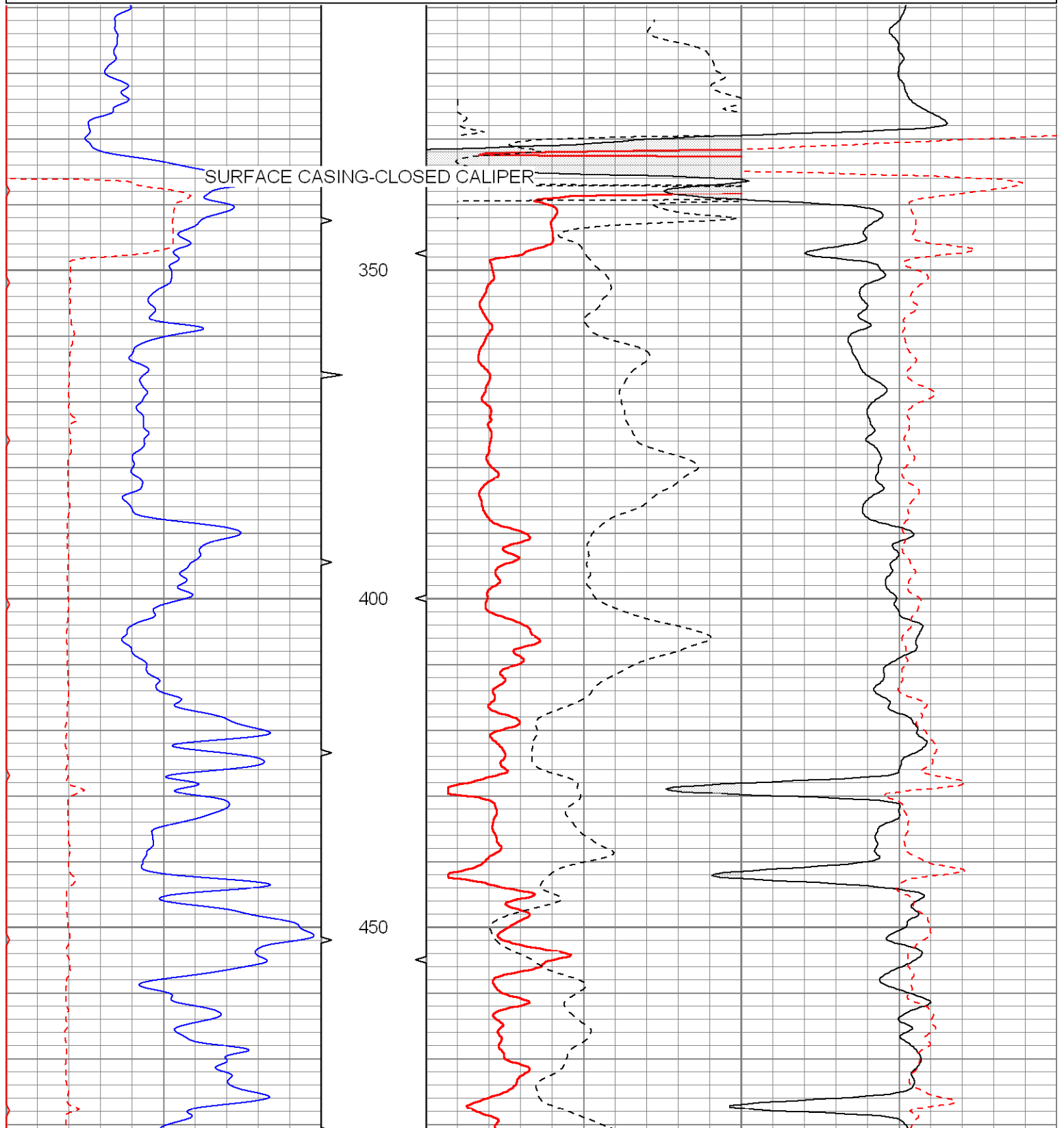
Fluid Level @ 1238'.

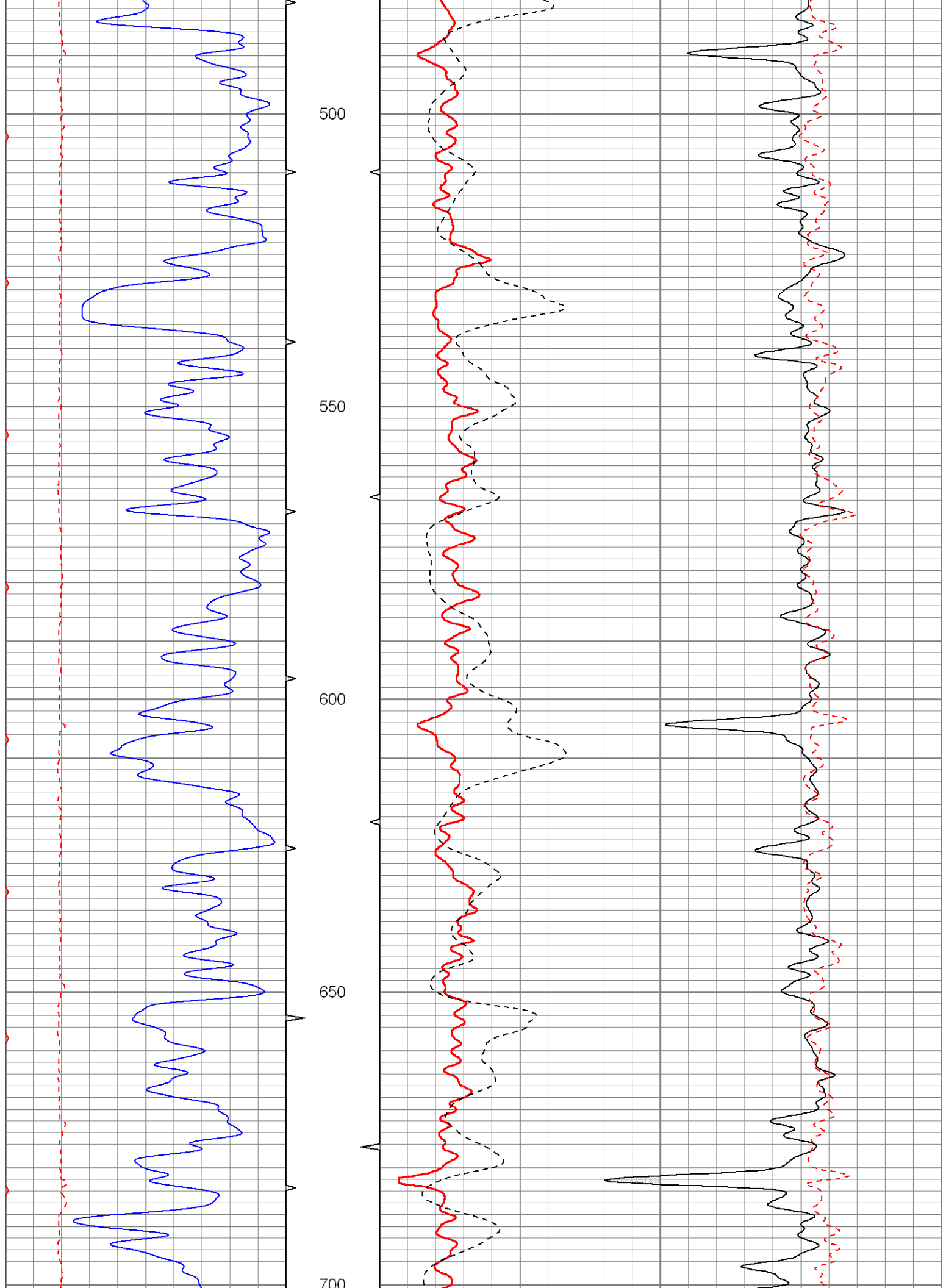
Reached a TD of 1255' on Repeat Section.

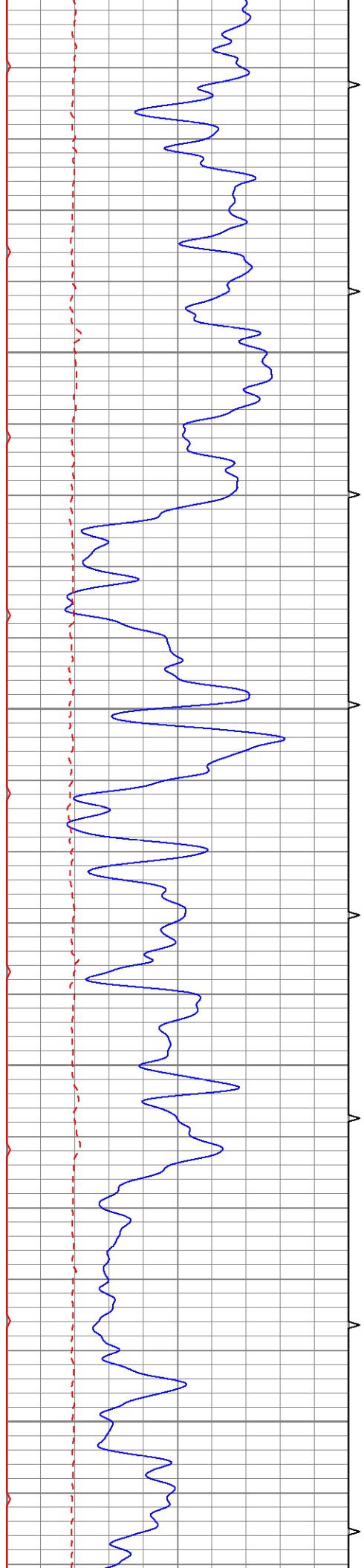
ABHV Calculated for 5 1/2" Casing.

Database File: c:\warrior\data\el pasov\el pasovprst38.db
Dataset Pathname: pass2.2
Presentation Format: combosil
Dataset Creation: Thu May 26 03:54:48 2005 by Calc Warrior 7.0 STD Ope
Charted by: Depth in Feet scaled 1:240

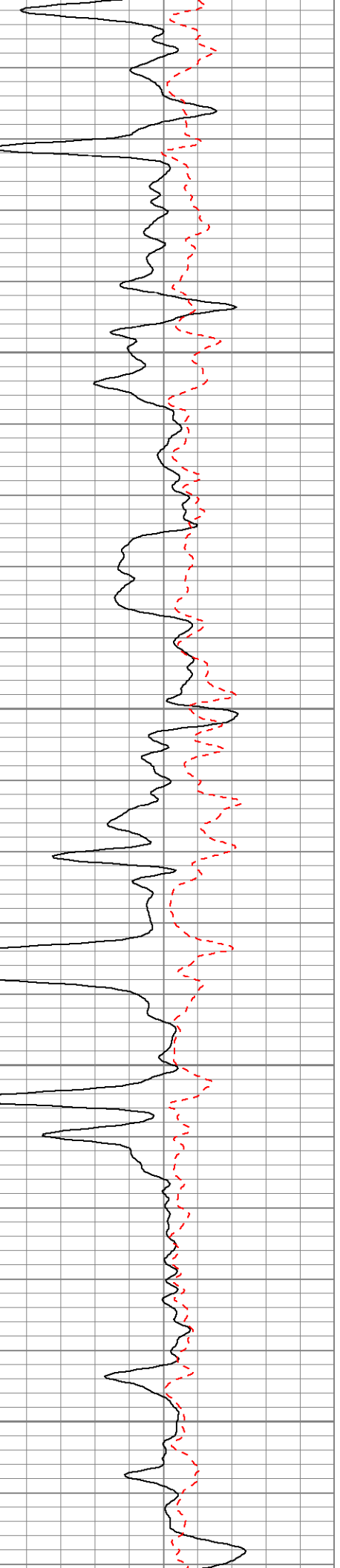
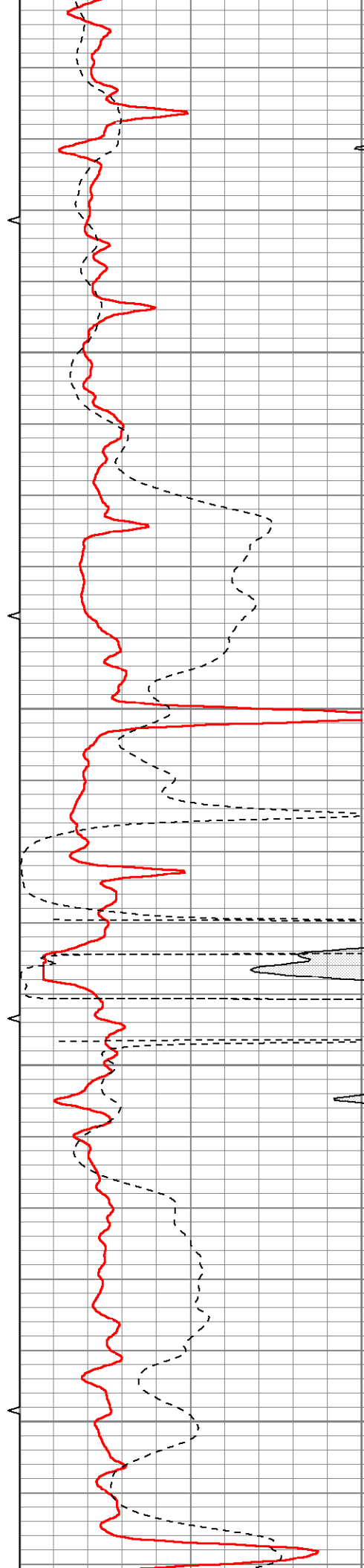
0	GR (GAPI)	200	TBHV (ft3)	1	RHOB (g/cc)				3
6	DCAL (in)	16		0	PE	10	-0.5	RHOC (g/cc)	0.5
			0	10					
			ABHV (ft3)	0	DIR (Ohm-m)	50			
				50	DIR (Ohm-m)	500			
			10	0					

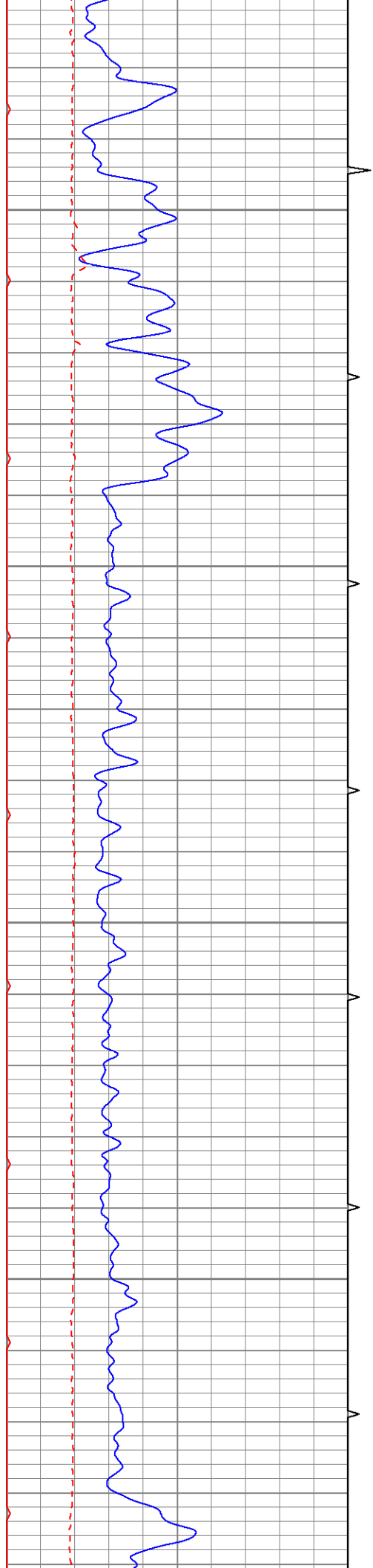






750
800
850
900



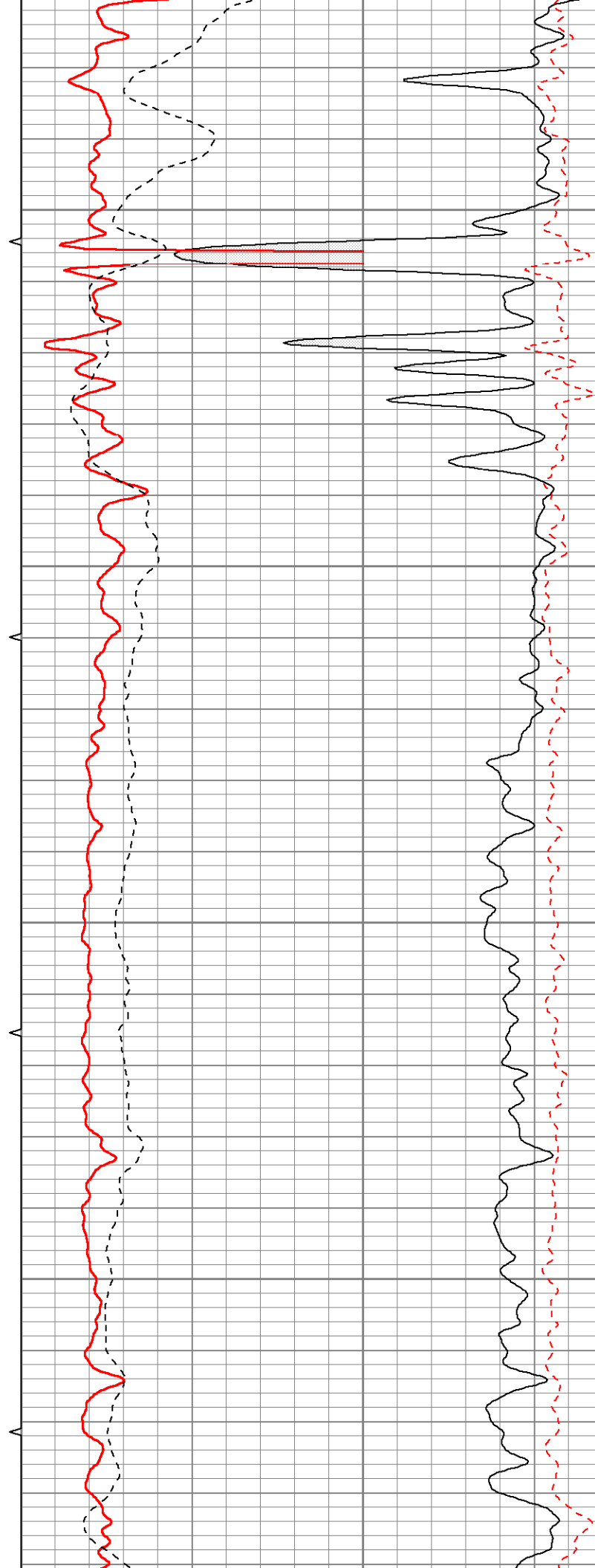


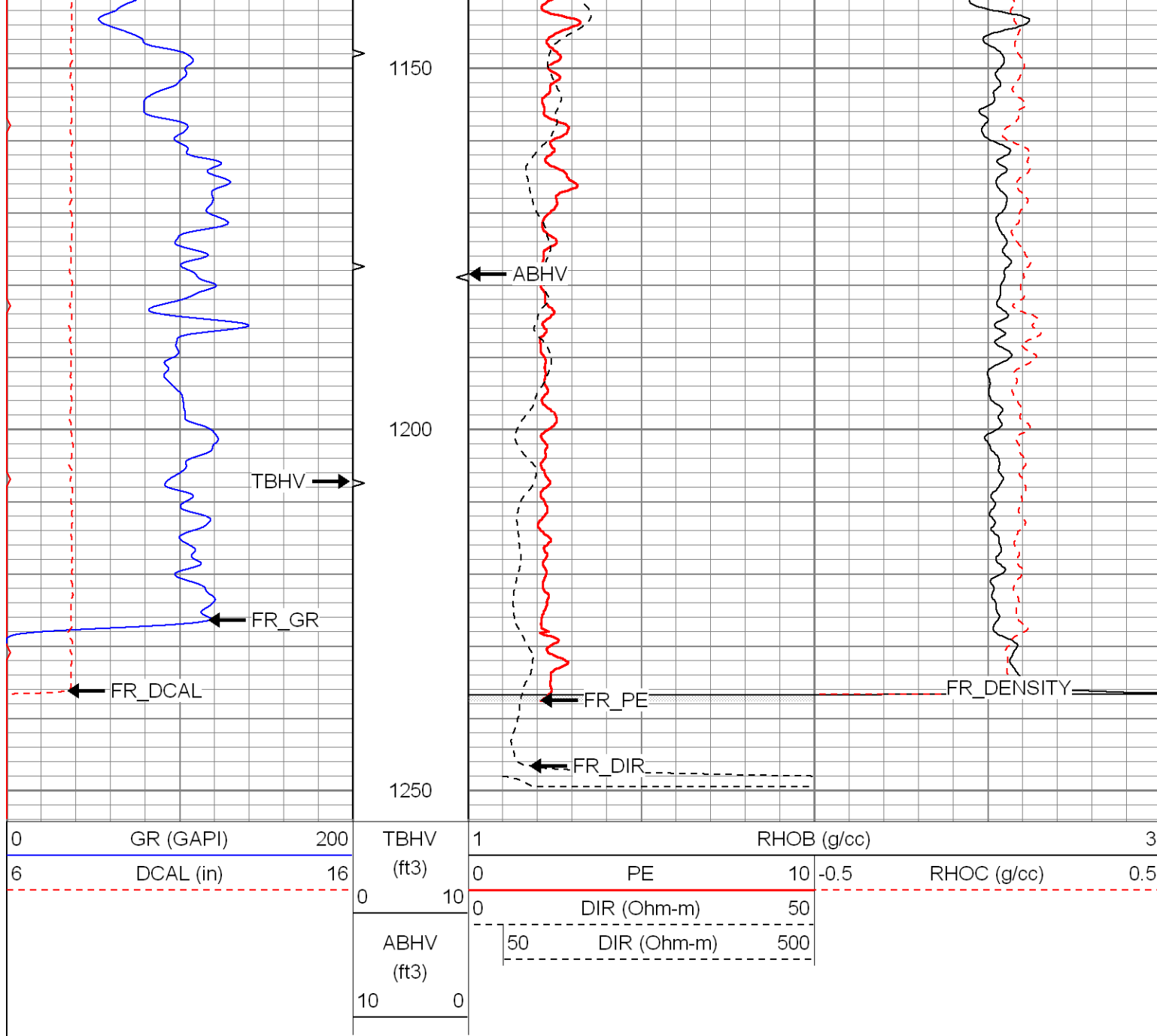
950

1000

1050

1100

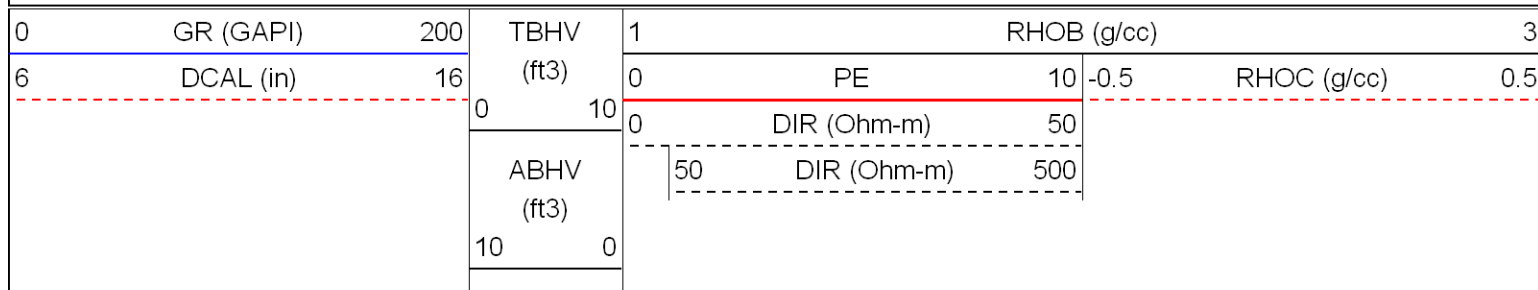


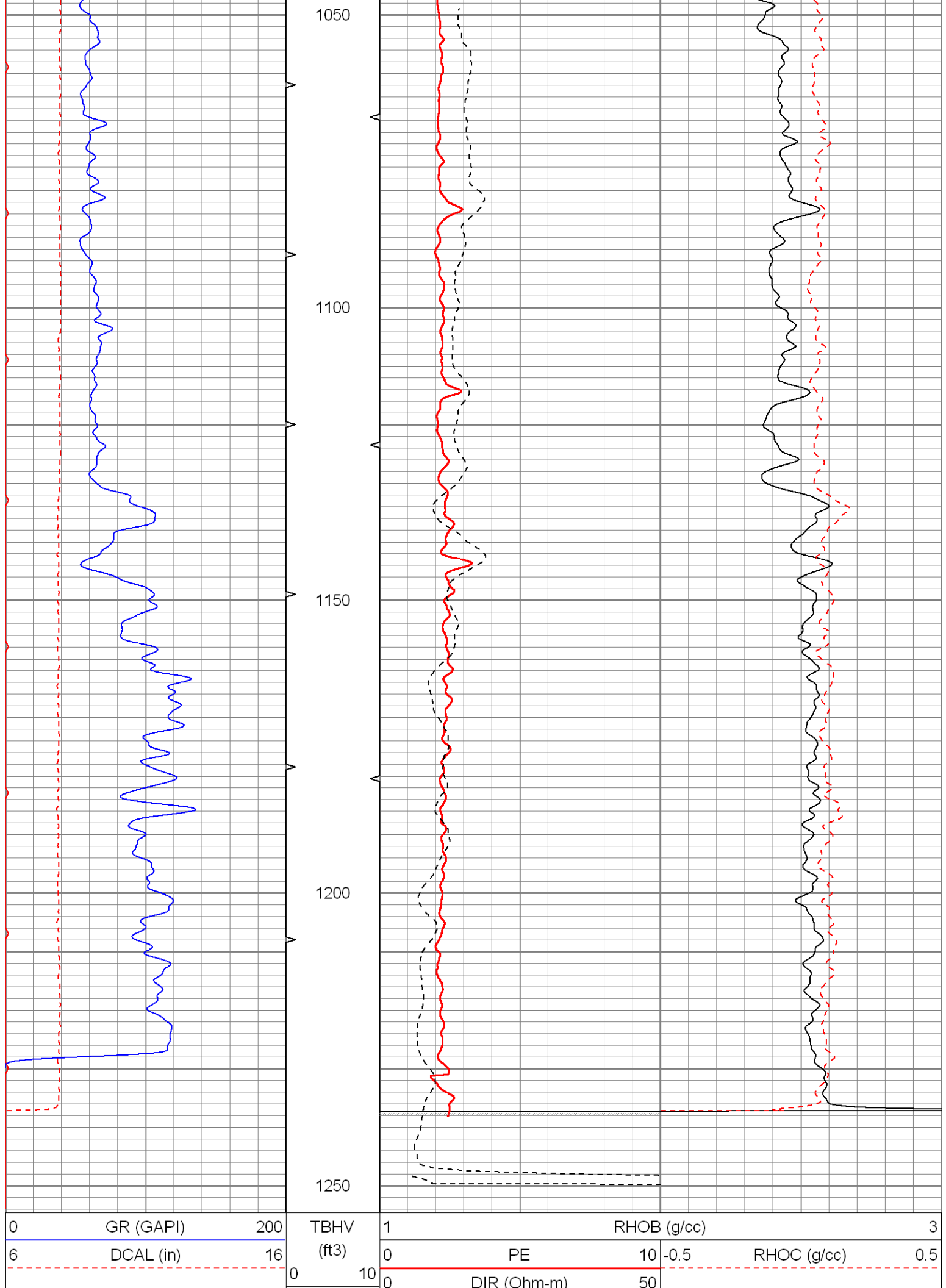


Patterson

Repeat Section

Database File: c:\warrior\data\elpaso\elpasovprst38.db
 Dataset Pathname: pass1.3
 Presentation Format: composil
 Dataset Creation: Thu May 26 04:00:27 2005 by Calc Warrior 7.0 STD Ope
 Charted by: Depth in Feet scaled 1:240





0 GR (GAPI) 200

6 DCAL (in) 16

TBHV (ft3)

0 10

1 PE 10

0 DIR (Ohm-m) 50

RHOB (g/cc) 3

-0.5 RHOC (g/cc) 0.5

	ABHV (ft3)	50	DIR (Ohm-m)	500
	10	0		

Induction Tool Calibration Report

Serial Number:	116
Tool Model:	G
Downhole Cal Performed:	Sat May 21 13:33:40 2005
Surface Cal Performed:	Sun May 22 10:11:41 2005
After Survey Verification Performed:	

Surface Calibration:	Air	Loop	
Conductivity Reference:	0.000	500.000	mmho
Conductivity Reading:	-0.020	0.651	V
Internal Reference:	Zero	Cal	
Conductivity Reference:	0.000	550.000	mmho
Conductivity Reading:	0.011	0.651	V

Downhole Calibration:	Internal Zero	Internal Cal	
Conductivity Reference:	33.539	500.276	mmho
Conductivity Reading:	38.014	507.273	V
Short Normal Reference:	0.000	17.000	Ohm-m
Short Normal Reading:	0.011	0.207	V

Results:	Gain	Offset
Loop Conductivity:	745.223	14.905
Downhole Correction:	0.995	-4.270
Short Normal Resistivity:	80.000	-3.500

After Survey Verification	Internal Zero	Internal Cal	
Conductivity Reading:	0.000	0.000	V
Conductivity Result:	0.000	0.000	mmho
Short Normal Reading:	0.000	0.000	V
Short Normal Result:	0.000	0.000	Ohm-m

Litho Density Calibration Report

Serial: 001 Model: PRB

Master Calibration	Performed Thu May 12 13:35:55 2005				
	Background	Magnesium	Aluminum	Aluminium + Fe	
Window 1	1902.5	14636.5	4776.4	4273.0	cps
Window 2	1729.7	11415.4	3877.3	3586.4	cps
Window 3	1361.8	5891.7	2320.5	2209.7	cps
Window 4	388.8	380.0	375.2	379.7	cps
Long Space	0.0	9685.7	2147.6	1856.7	cps
Short Space	1.9	3079.1	2059.4	1742.9	cps
Rho		1.7100	2.5900	1.3800	g/cc
Pe		2.0000	2.7500	5.0000	
Rib Angle	: 45.0	Rib Slope	: 1.002	Density/Spine Ratio	: 0.564
Spine Angle	: 75.0	Spine Slope	: 3.745	Spine Intercept	: -20.9

Gamma Ray Calibration Report

Serial Number:	2001	
Tool Model:	OH	
Performed:	Sun May 15 10:36:11 2005	
Calibrator Value:	1.0	GAPI

Background Reading:	0.0	cps
Calibrator Reading:	1.0	cps
Sensitivity:	0.2000	GAPI/cps

Sensor	Offset (ft)	Schematic	Description	Len (ft)	OD (in)	Wt (lb)
GR	26.49		GR-OH (2001) SIE	3.50	3.25	40.00
			LDT-PRB (001) Probe Litho Density	10.04	3.63	200.00
W1	17.25					
W2	17.25					
W3	17.25					
W4	17.25					
SSD	17.25					
Q	17.25					
DCAL	17.25					
DIC	6.89			IEL-G (116)	15.25	4.00
SP	1.50					
SN	1.00					
Dataset: /field/well/run1/_plots/_jobs/_cdlsilpe Total Length: 28.79 ft Total Weight: 418.00 lb O.D. 4.00 in						