

Patterson

**SINGLE
INDUCTION
LOG**

Company	Pioneer Natural Resources		
Well	Yellowknife 11-2		
Field	Purgatorie River		
County	Las Animas	State	Colorado
State	Colorado		
Company		Pioneer Natural Resources	
Well		Yellowknife 11-2	
Field		Purgatorie River	
County		Las Animas	State Colorado
Location:		AP1 # : 05 071 08189 00	
SEC 2 TWP 35S RGE 65W		CDL NEUTRON	
Permanent Datum	Ground Level	Elevation	7455'
Log Measured From	Kelly Bushing 4' Above G.L.	K.B. 7459'	D.F. -----
Drilling Measured From	Kelly Bushing	G.L. 7455'	
Date	12-11-04		
Run Number	One		
Depth Driller	1645'		
Depth Logger	1652'		
Bottom Logged Interval	1650'		
Top Log Interval	Surface Casing		
Casing Driller	8 5/8" @ 254'		
Casing Logger	254'		
Bit Size	7 7/8"		
Type Fluid in Hole	Water		
Density / Viscosity	//		
pH / Fluid Loss	//		
Source of Sample	//		
Rm @ Meas. Temp	//		
Rmft @ Meas. Temp	//		
Rmc @ Meas. Temp	//		
Source of Rmft / Rmc	//		
Rm @ BHT	//		
Time Circulation Stopped	10:00 a.m.		
Time Logger on Bottom	12:50 p.m.		
Maximum Recorded Temperature	104 DEG F		
Equipment Number	T632		
Location	Trinidad		
Recorded By	M. Norton		
Witnessed By	Mr. Tom Beardslee		

<<< Fold Here >>>

All interpretations are opinions based on inferences from electrical or other measurements and we cannot and do not guarantee the accuracy or correctness of any interpretation, and we shall not, except in the case of gross or willful negligence on our part, be liable or responsible for any loss, costs, damages, or expenses incurred or sustained by anyone resulting from any interpretation made by any of our officers, agents or employees. These interpretations are also subject to our general terms and conditions set out in our current Price Schedule.

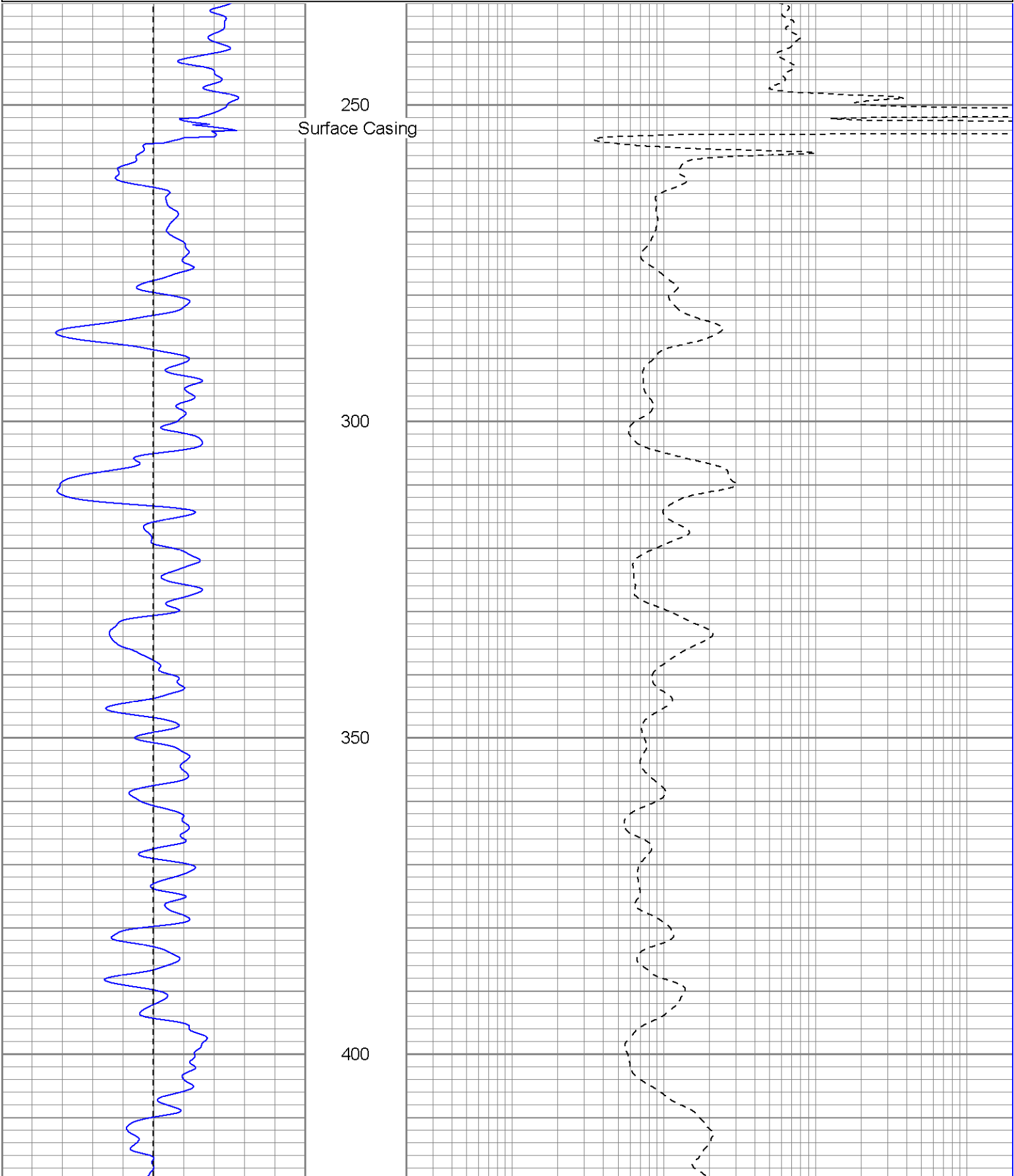
Comments

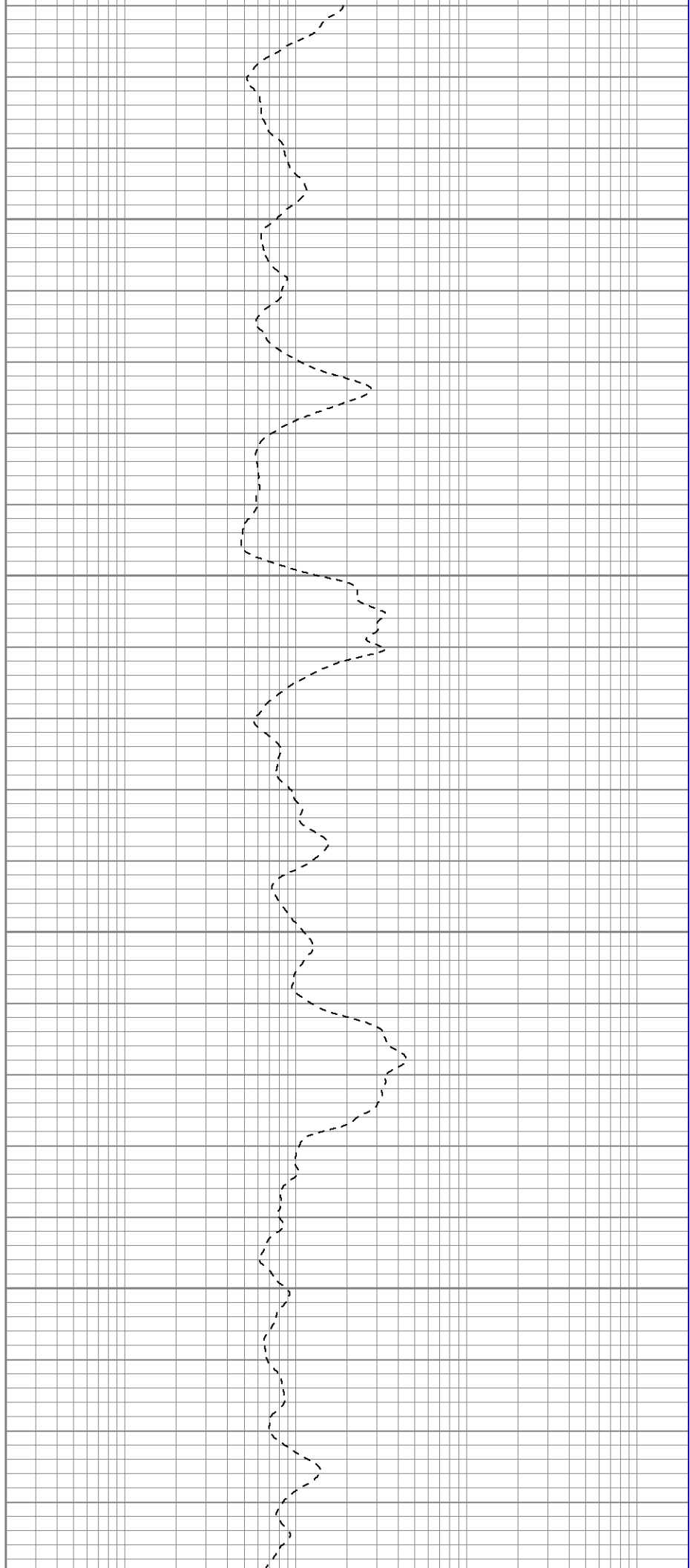
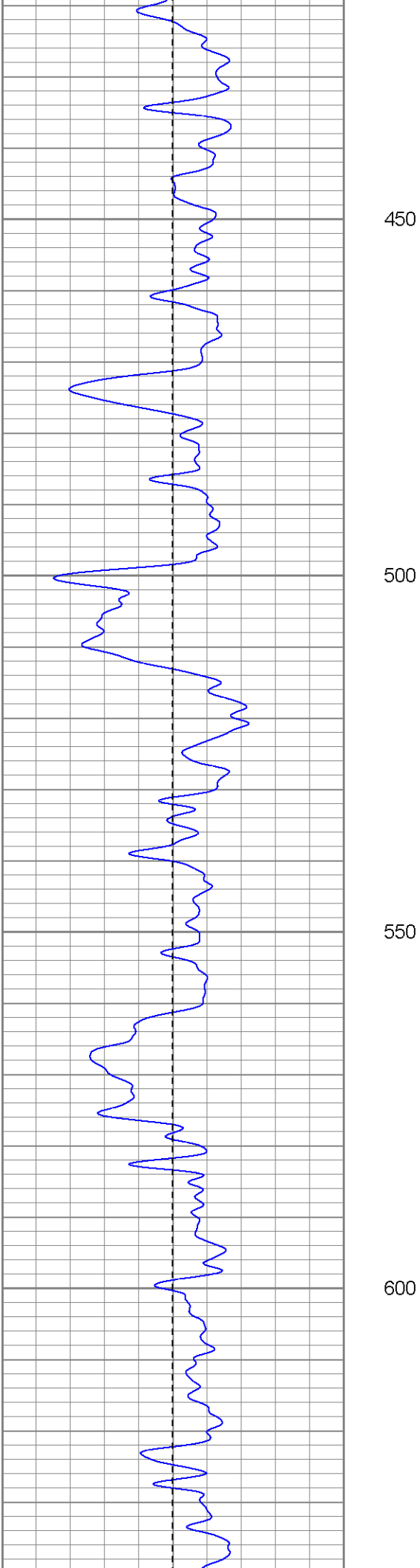
Well Directions:
Longs Canyon Left Before Fourth Gate Right Across Creek Top Of The Right
Second Left After Drive Thru Location First Location.

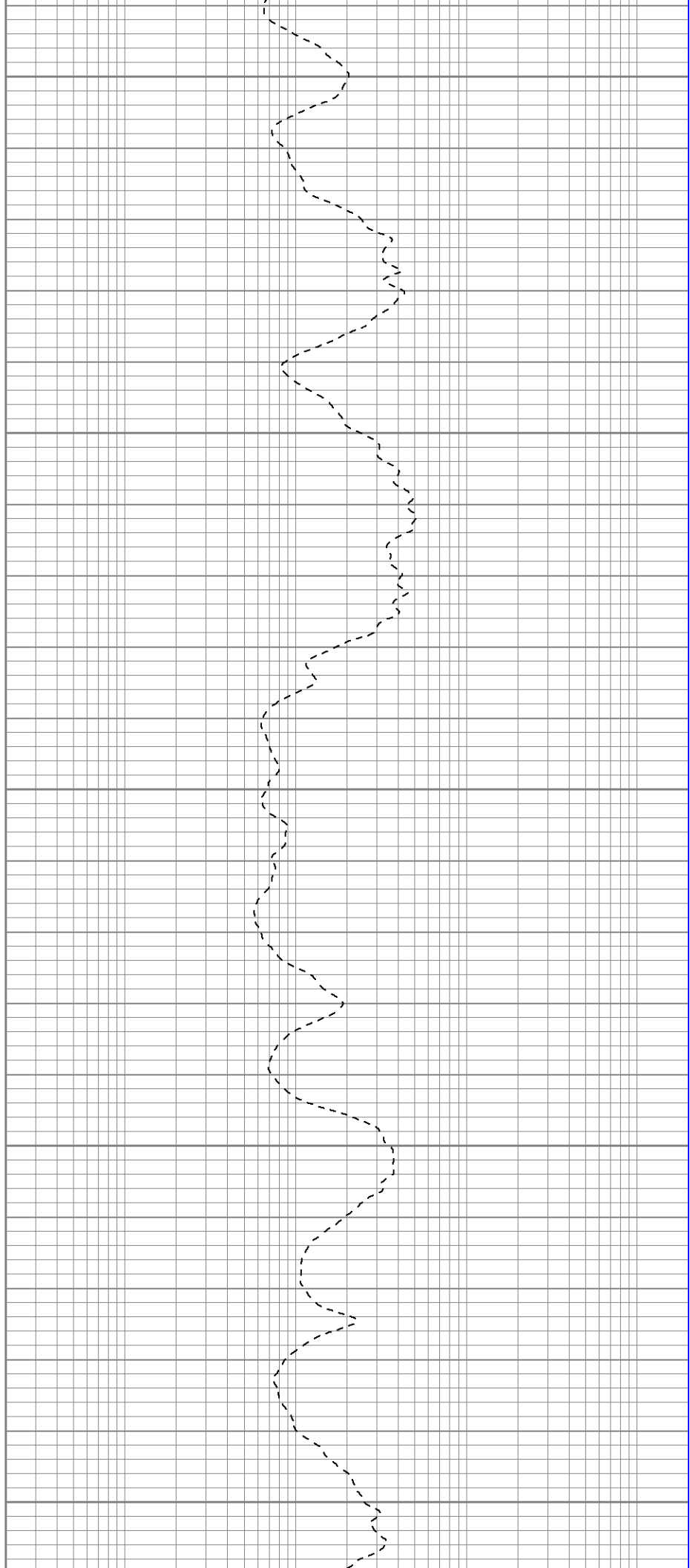
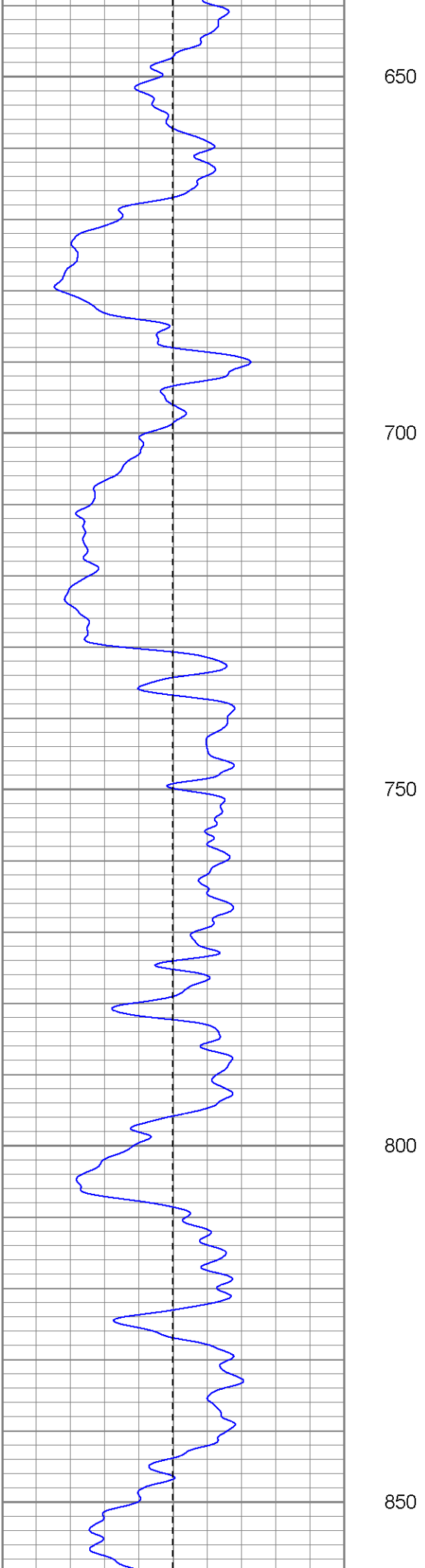
Database File: yellowknife.db
Dataset Pathname: pass1.1
Presentation Format: iel
Dataset Creation: Sat Dec 11 13:47:35 2004 by Calc Warrior 7.0 STD Ope
Charted by: Depth in Feet scaled 1:240

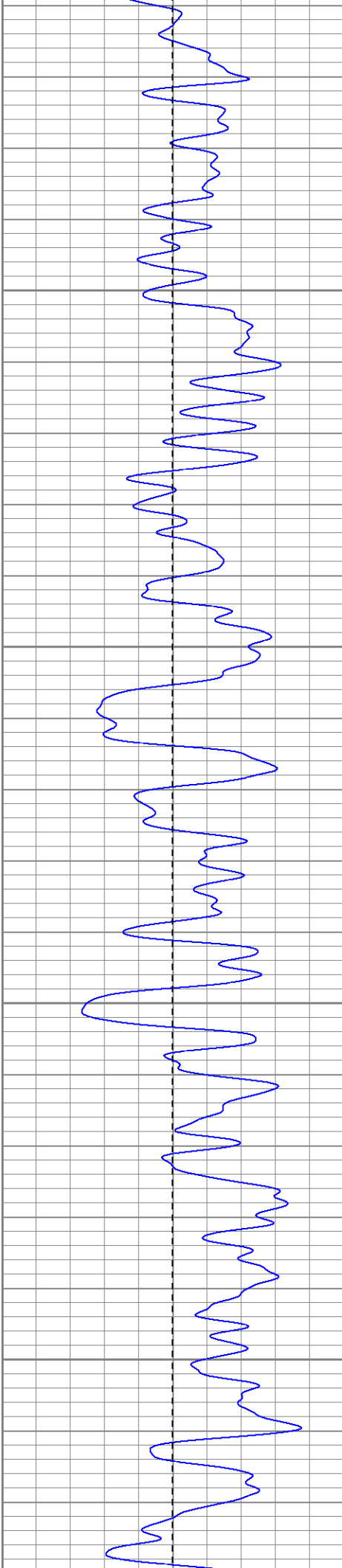
0	GR (GAPI)	200
-100	SP (mV)	100

0.2	DIR (Ohm-m)	2000
0.2	SN (Ohm-m)	2000







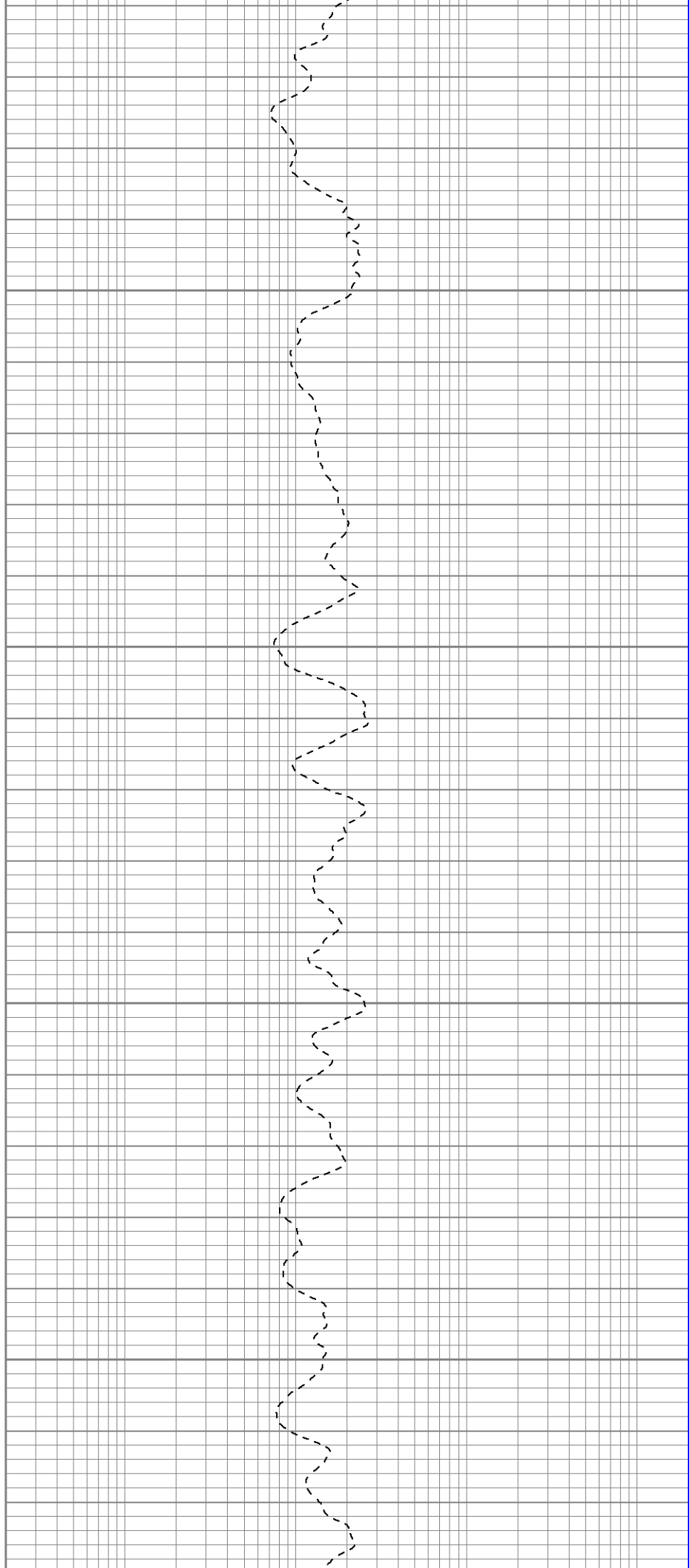


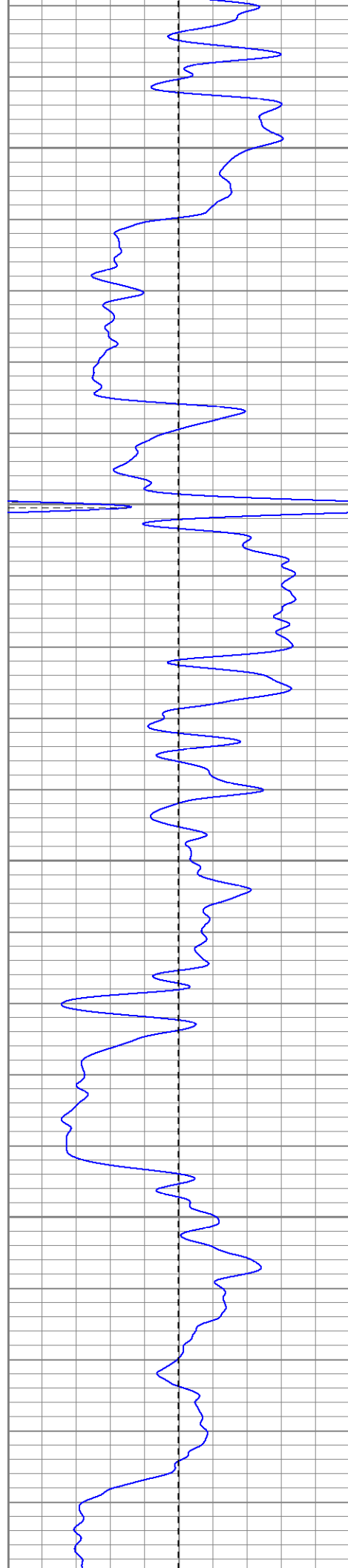
900

950

1000

1050





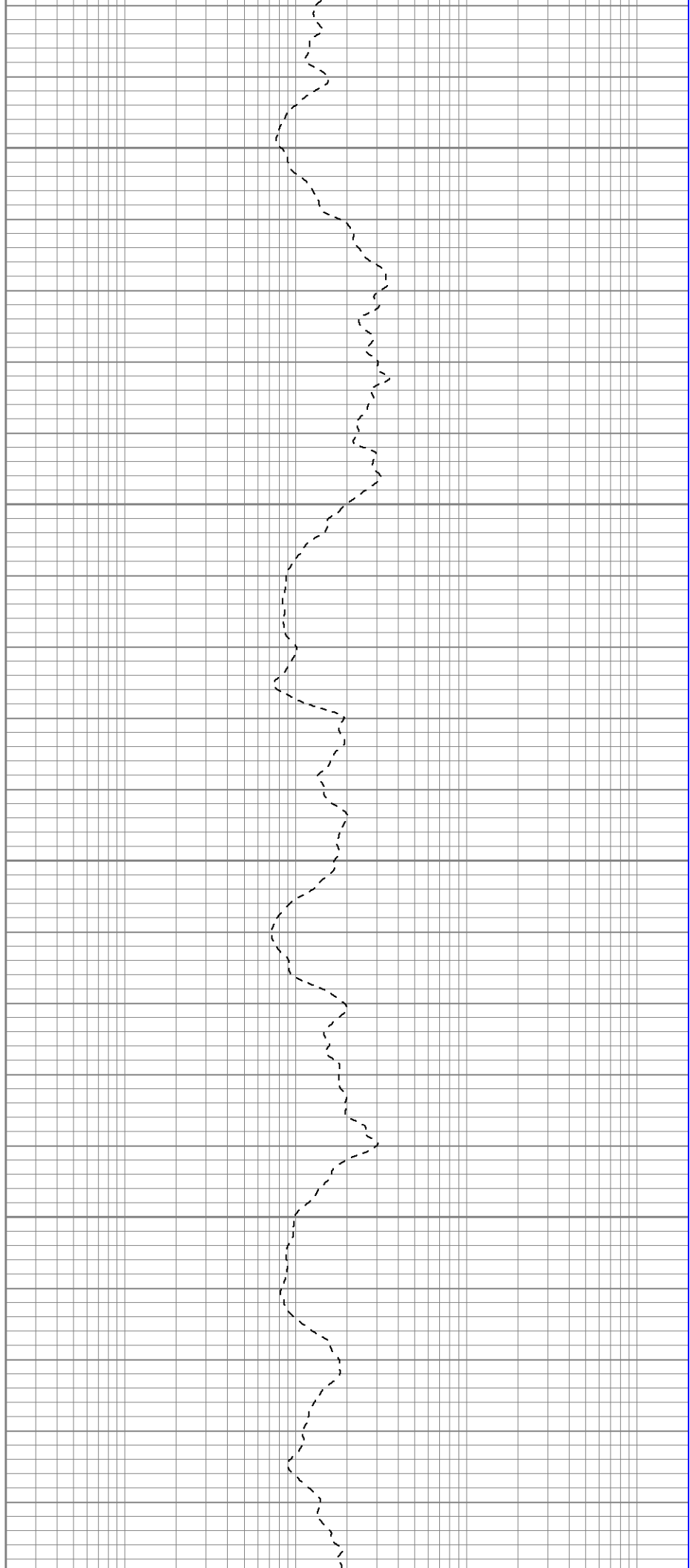
1100

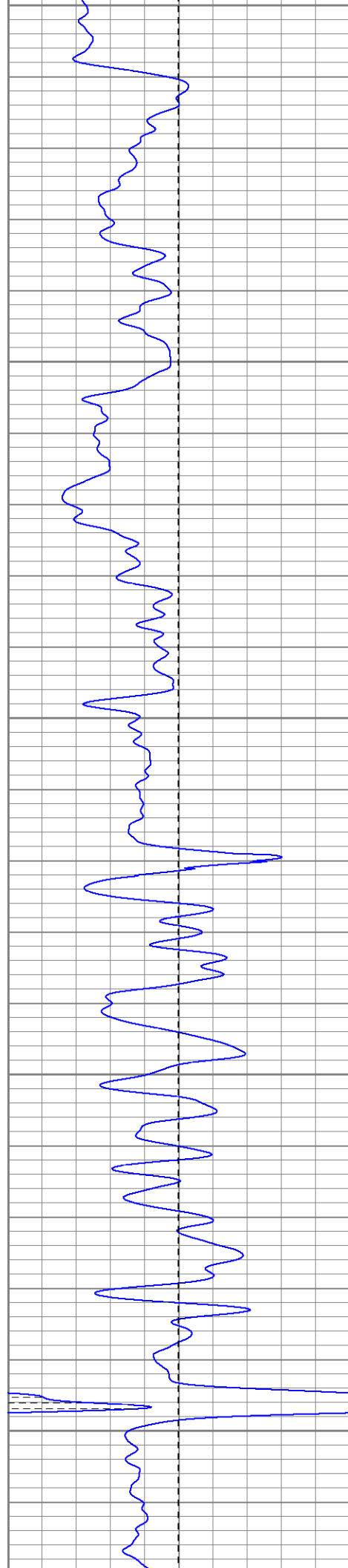
1150

1200

1250

1300





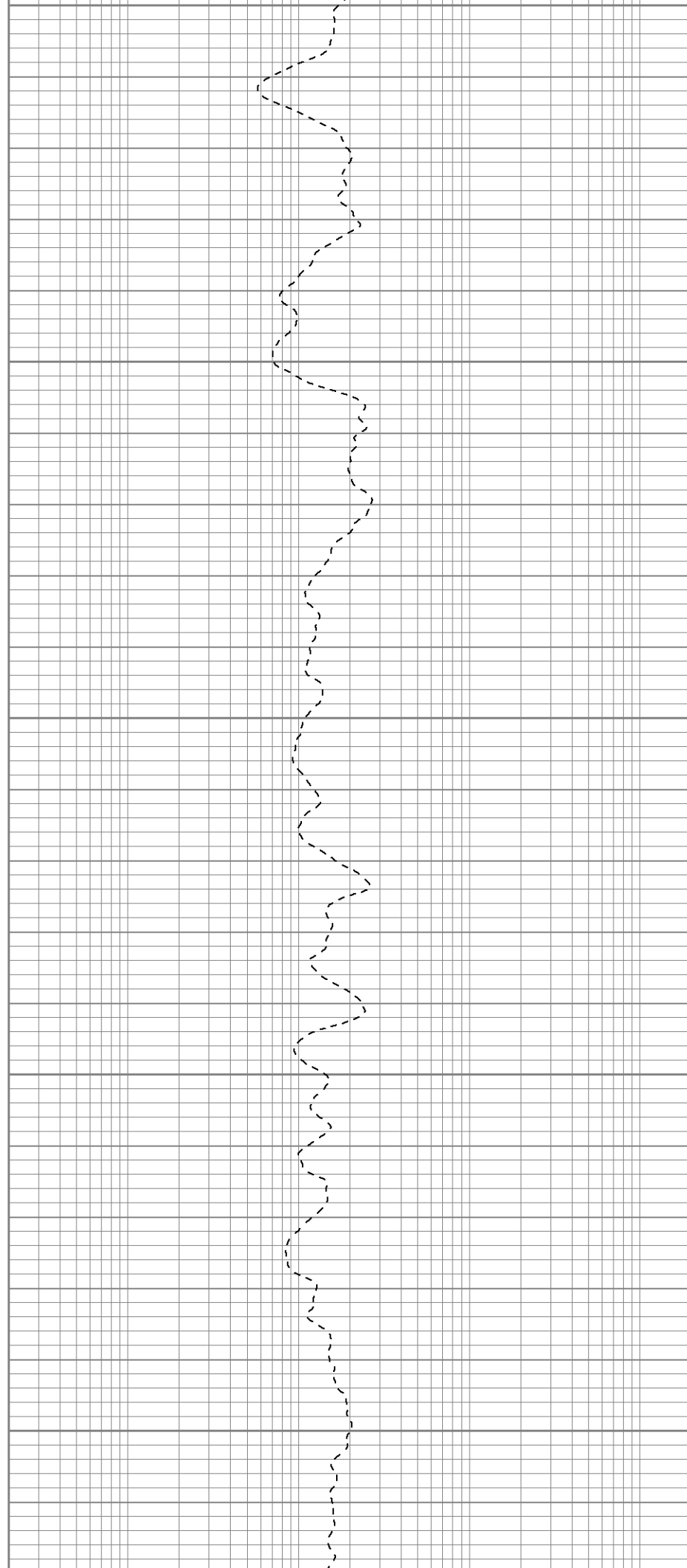
1300

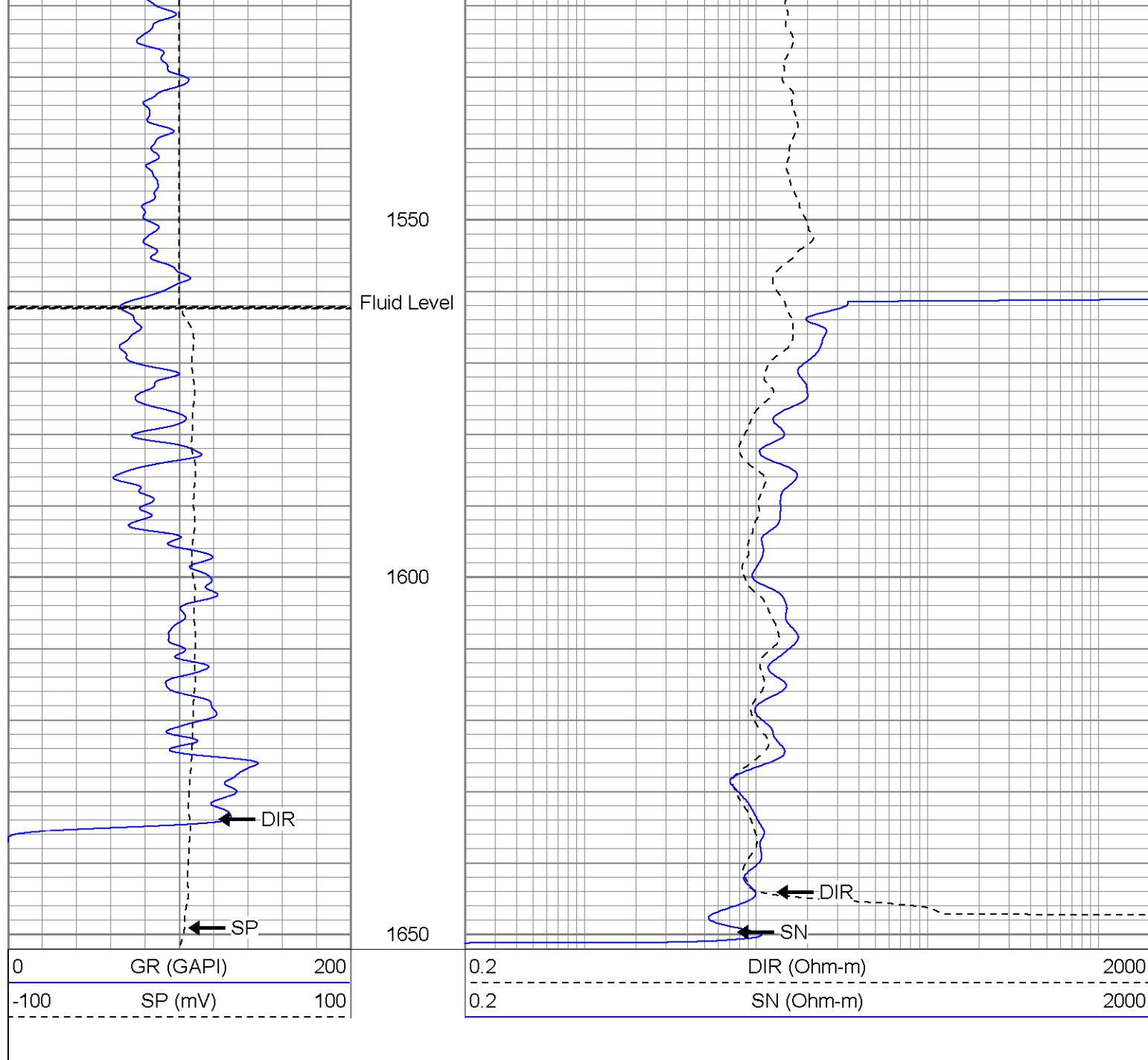
1350

1400

1450

1500





Induction Tool Calibration Report

Serial Number: 9007
Tool Model: G
Downhole Cal Performed: Thu Dec 09 09:55:55 2004
Surface Cal Performed: Thu Dec 09 09:54:25 2004

Surface Calibration:	Air	Loop	
Conductivity Reference:	0.000	550.000	mmho
Conductivity Reading:	-0.008	0.690	V
Internal Reference:	Zero	Cal	
Conductivity Reference:	0.000	500.000	mmho
Conductivity Reading:	0.004	0.692	V

Downhole Calibration:	Internal Zero	Internal Cal	
Conductivity Reference:	-2.651	551.500	mmho
Conductivity Reading:	6.663	525.624	V
Short Normal Reference:	0.000	17.000	Ohm-m
Short Normal Reading:	0.011	0.209	V

Serial Number:	2000	
Tool Model:	PROBE	
Performed:	Thu Dec 09 09:54:11 2004	
Calibrator Value:	200.0	GAPI
Background Reading:	80.0	cps
Calibrator Reading:	255.0	cps
Sensitivity:	0.2600	GAPI/cps

Sensor	Offset (ft)	Schematic	Description	Len (ft)	OD (in)	Wt (lb)
GR	16.75		GR-PROBE (2000)	3.58	3.25	40.00
DIC	6.89		IEL-G (9007)	15.25	4.00	178.00
SP SN	1.50 1.00					
		Dataset: /field/well/run1/_plots/_jobs_/sil Total Length: 18.83 ft Total Weight: 218.00 lb O.D. 4.00 in				