



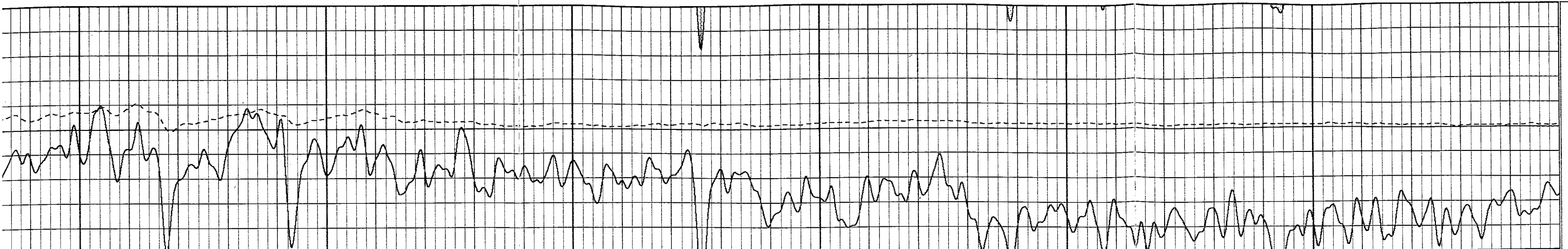
DUAL INDUCTION  
GUARD LOG  
GAMMA RAY

PHOENIX SURVEYS, INC.

Company		K.P. Kauffman Co.	
Well	Bliss 41-21		
Field	Wattenberg		
County	Weld	State/Province	Colorado
Location		SHL: 1034' FNL & 263' FEL NE NE BHL: 660' FNL & 660' FEL Sec. 21, Twp. 2N, Rge. 68W	
Other Services		Density Neutron	
Permanent Datum	GL	Elevation	4888
Log Measured From	KB	K.B. 4900 D.F. 4899 G.L. 4888	
Drilling Measured From	KB		
Date	August 4, 2006		
Run Number	1		
Depth Driller	4926		
Depth Logger	4923		
Bottom Logged Interval	4923		
Top Log Interval	Casing		
Casing Driller	627		
Casing Logger	627		
Bit Size	7-7/8"		
Type Fluid in Hole	Chem Gel		
Density / Viscosity	9.8 / 63		
pH / Fluid Loss	9.0 / 8.0		
Source of Sample	Mudpit		
Rm @ Meas. Temp	1.92 @ 87° F		
Rmf @ Meas. Temp	1.53 @ 87° F		
Rmc @ Meas. Temp	2.23 @ 87° F		
Source of Rmf / Rmc	Measure / Calc		
Rm @ BHT	1.34 @ 139° F		
Time Circulation Stopped	2015 8/3/06		
Time Logger on Bottom	0030		
Maximum Recorded Temperature	139° F		
Equipment Number	4041		
Location	Brighton, CO		
Recorded By	Ian Harris		

30	Gamma Ray (GAPI)	130
40	SP (mV)	140

0.2	Deep Resistivity (Ohm-m)	2000
0.2	Medium Resistivity (Ohm-m)	2000
0.2	Shallow Resistivity (Ohm-m)	2000

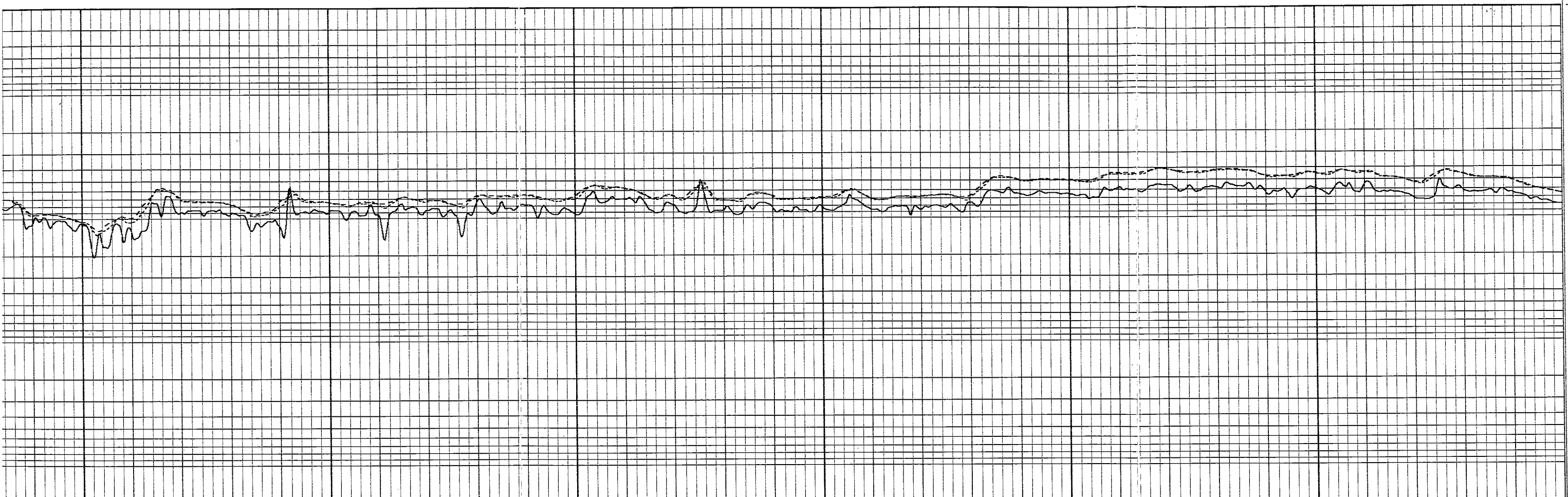


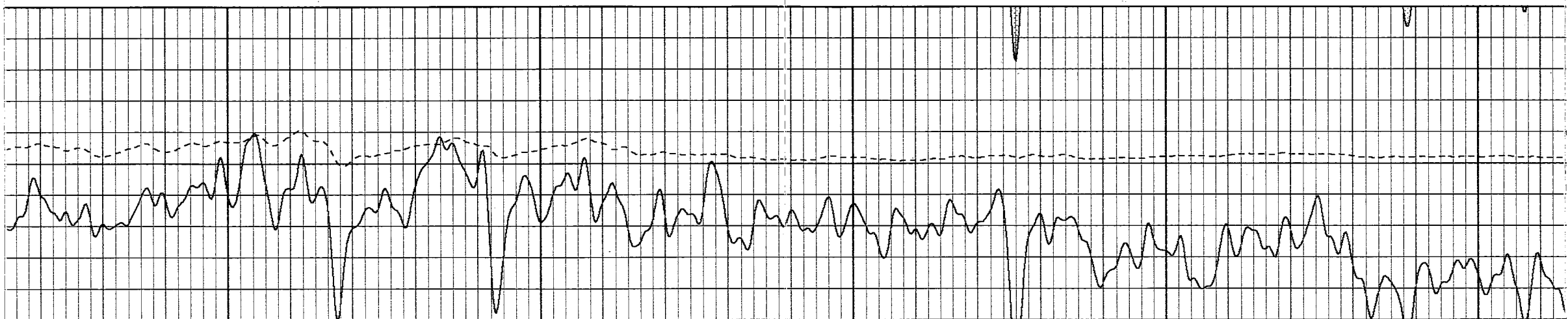
4400

4300

4200

4100

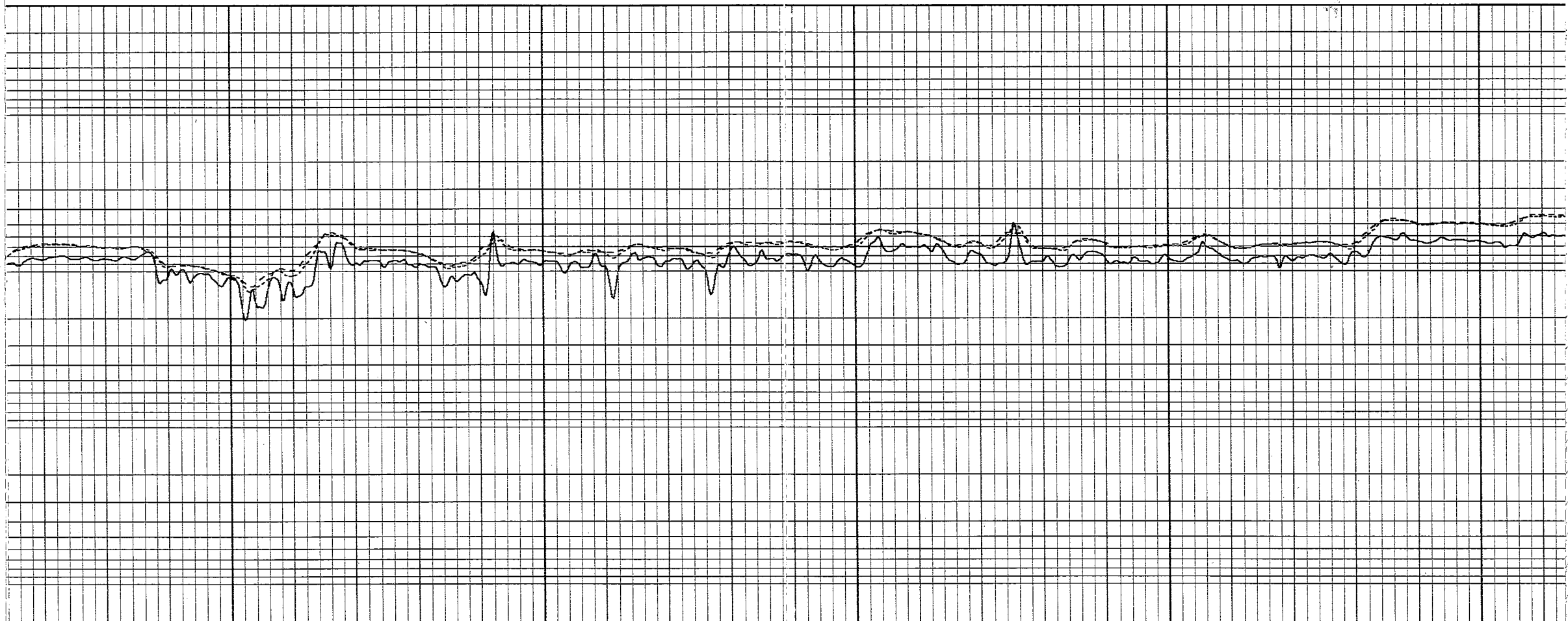


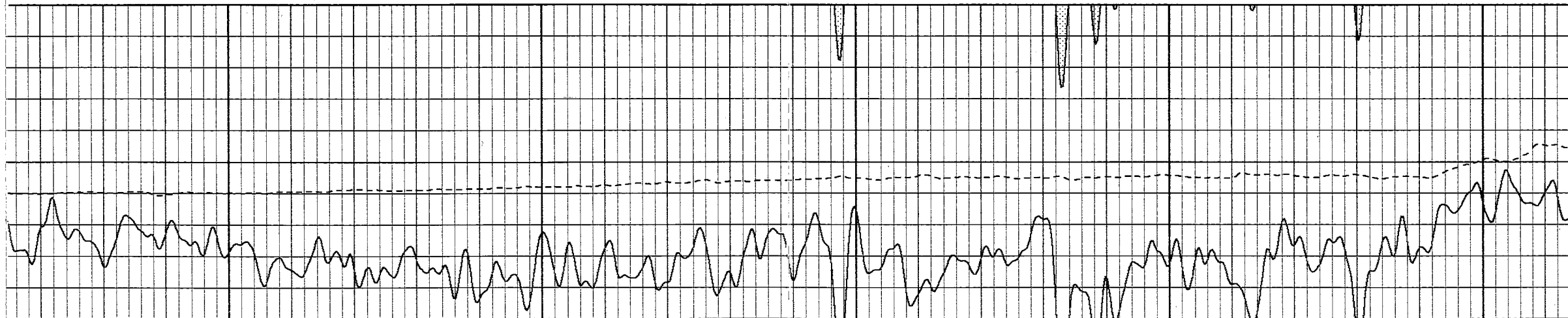


4400

4300

4200





4600

4500

