

Patterson

DUAL
INDUCTION
LOG

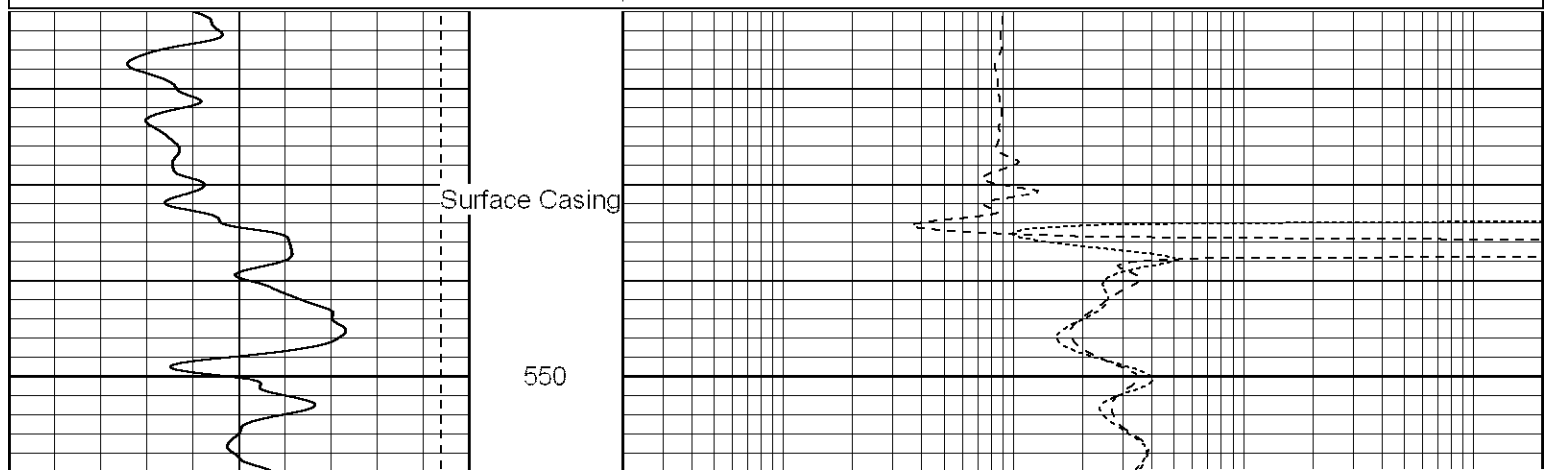
Company XTO Energy Inc.
Well Golden Eagle 33-01
Field Purgatoire River
County Las Animas State Colorado

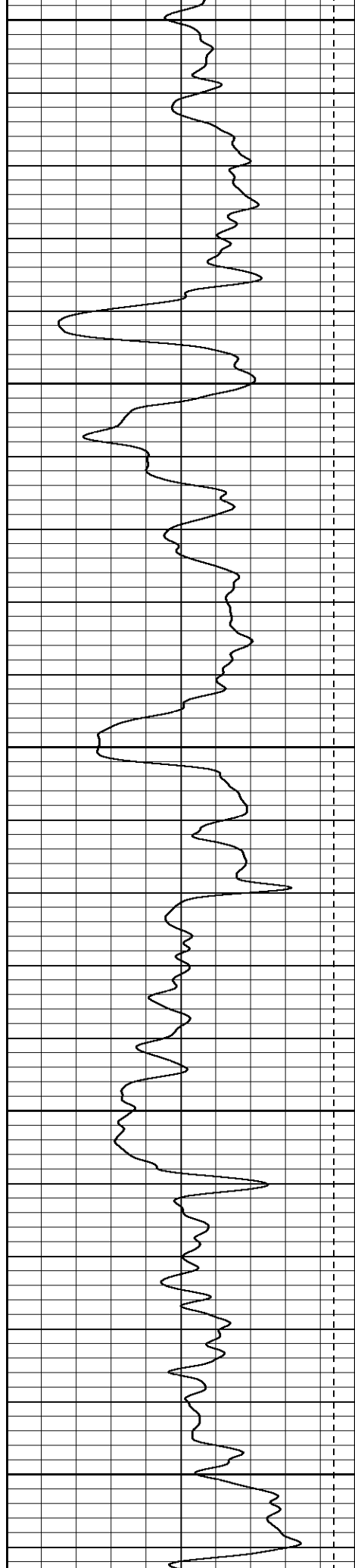
Location:	API # : 05 071 08815 00		Other C nel
	899' FNL & 392' FEL		
	SEC 33	TWP 33S RGE 67W	Elev
Permanent Datum	Ground Level	Elevation	7444'
Log Measured From	Ground Level		K.B. --
Drilling Measured From	Ground Level		D.F. --
			G.L. 74

Date	07-10-06		
Run Number	One		
Depth Driller	2125'		
Depth Logger	2126'		
Bottom Logged Interval	2124'		
Top Log Interval	Surface Casing		
Casing Driller	8 5/8" @ 536'		
Casing Logger	532'		
Bit Size	7 7/8"		
Type Fluid in Hole	Water		
Density / Viscosity	///		
pH / Fluid Loss	///		
Source of Sample	///		
Rm @ Meas. Temp	///		
Rmf @ Meas. Temp	///		
Rmc @ Meas. Temp	///		
Source of Rmf / Rmc	///		
Rm @ BHT	///		
Time Circulation Stopped	3:00 a.m.		
Time Logger on Bottom	6:00 a.m.		
Maximum Recorded Temperature	110		
Equipment Number	T677		
Location	Trinidad		
Recorded By	L. Smith		
Witnessed By	Mr. Don Johnson		

Database File: xtoge3301.db
Dataset Pathname: pass2.1
Presentation Format: dil
Dataset Creation: Mon Jul 10 07:31:02 2006 by Calc Warrior 7.0 STD Ope
Charted by: Depth in Feet scaled 1:240

0	GR (GAPI)	200	0.2	RILD (Ohm-m)	2000
-200	SP (mV)	0	0.2	RILM (Ohm-m)	2000
			0.2	RLL3 (Ohm-m)	2000





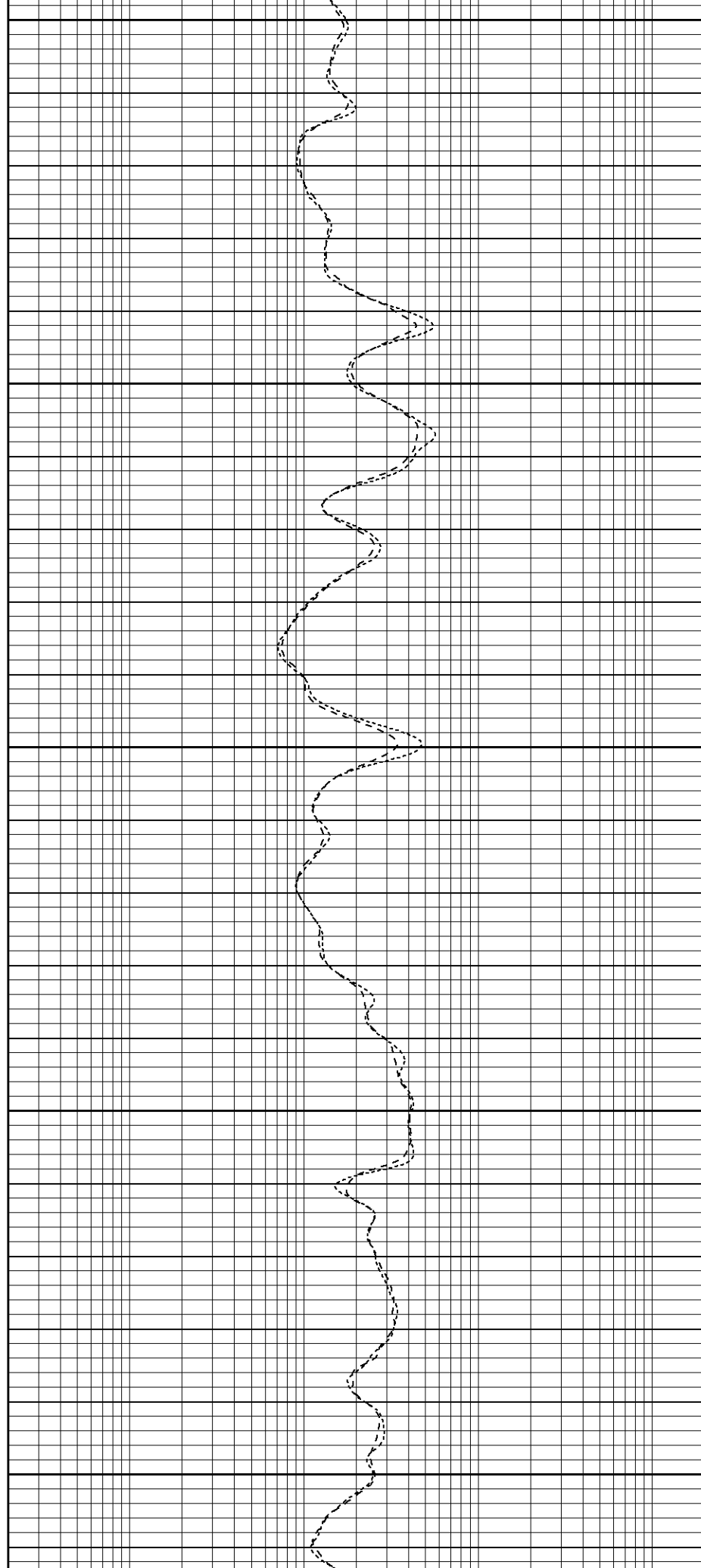
700

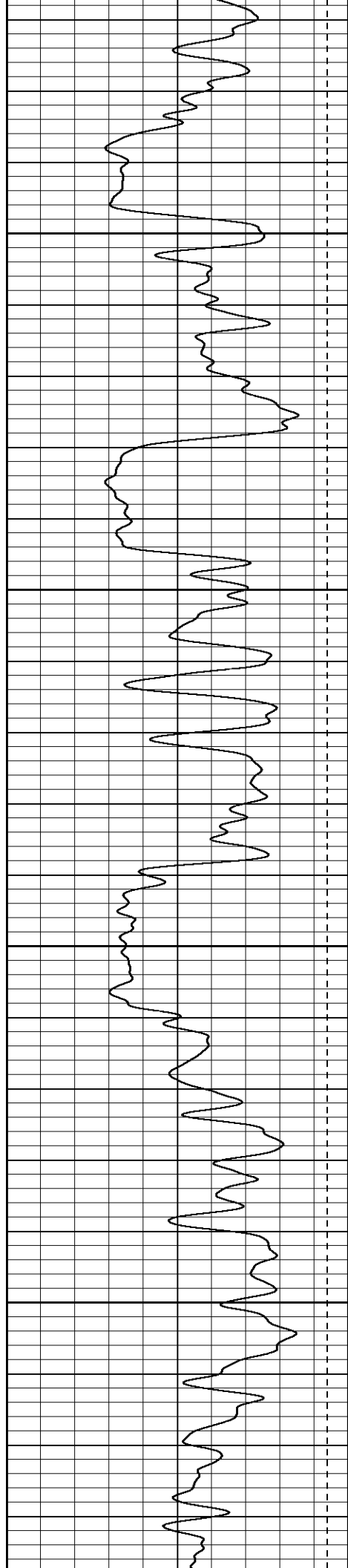
750

800

850

900



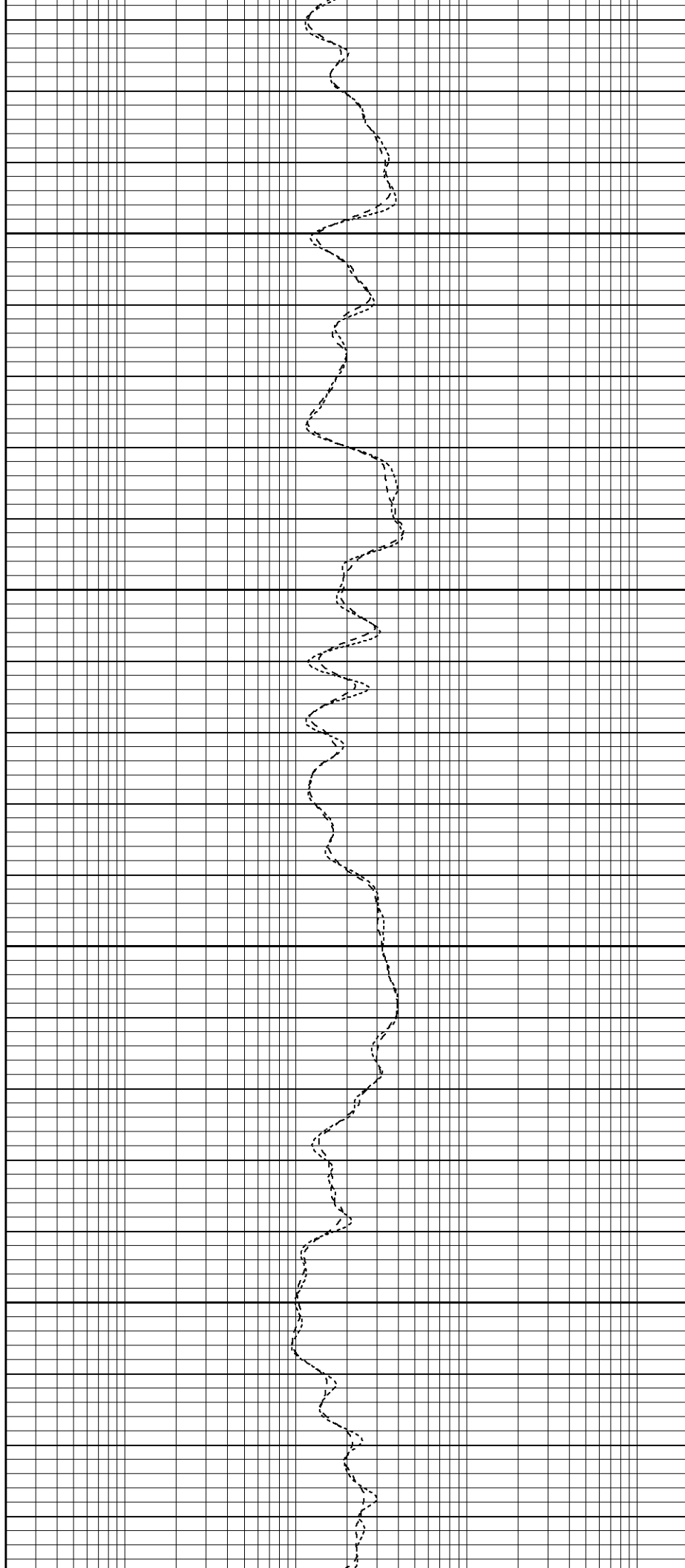


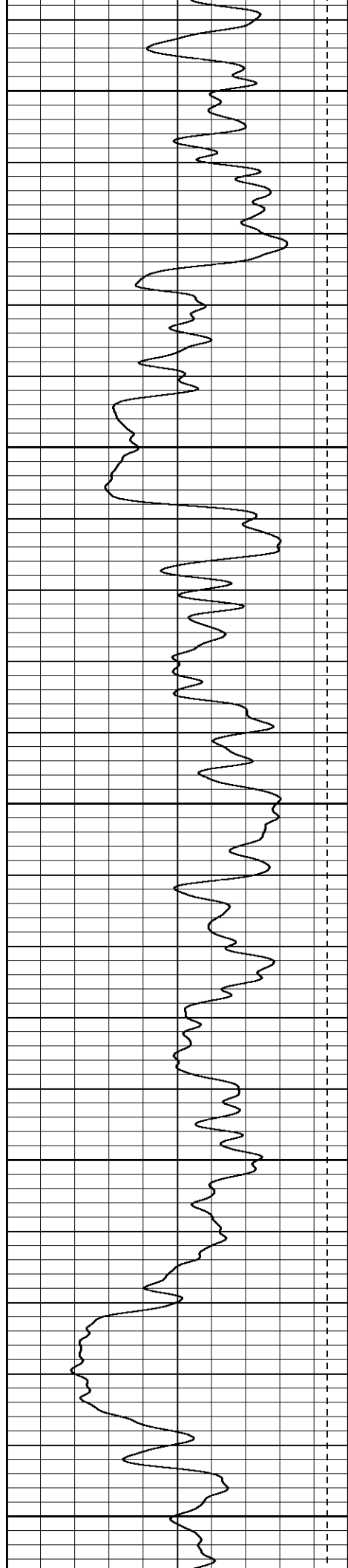
950

1000

1050

1100





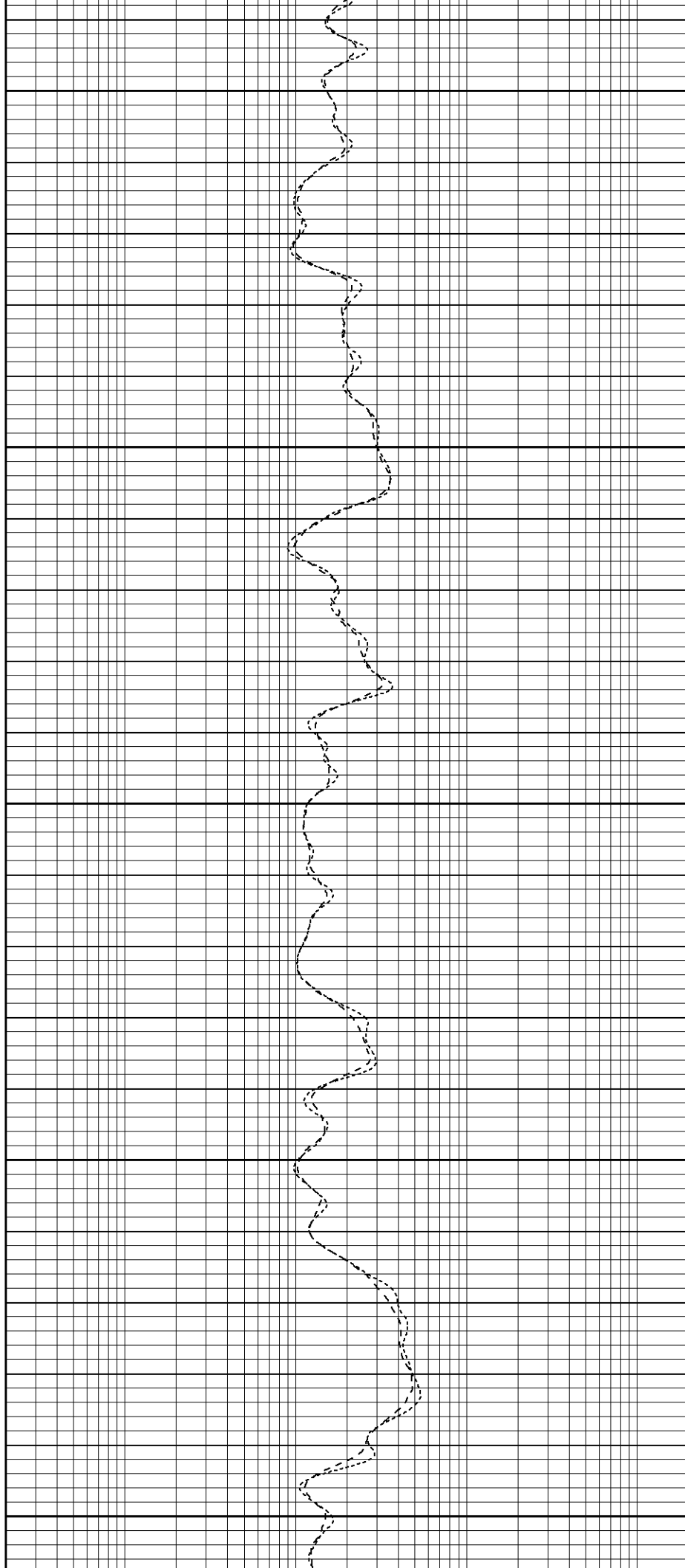
1150

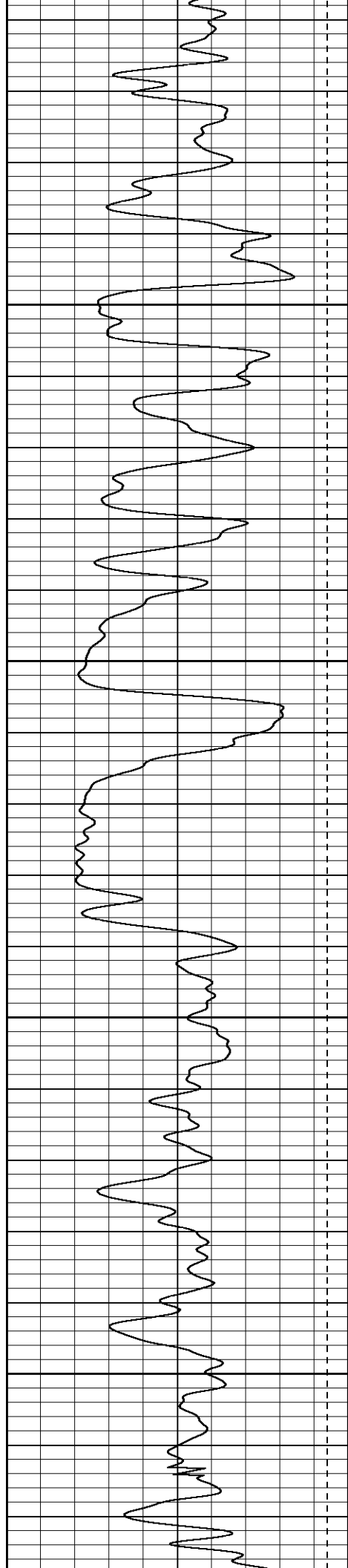
1200

1250

1300

1350



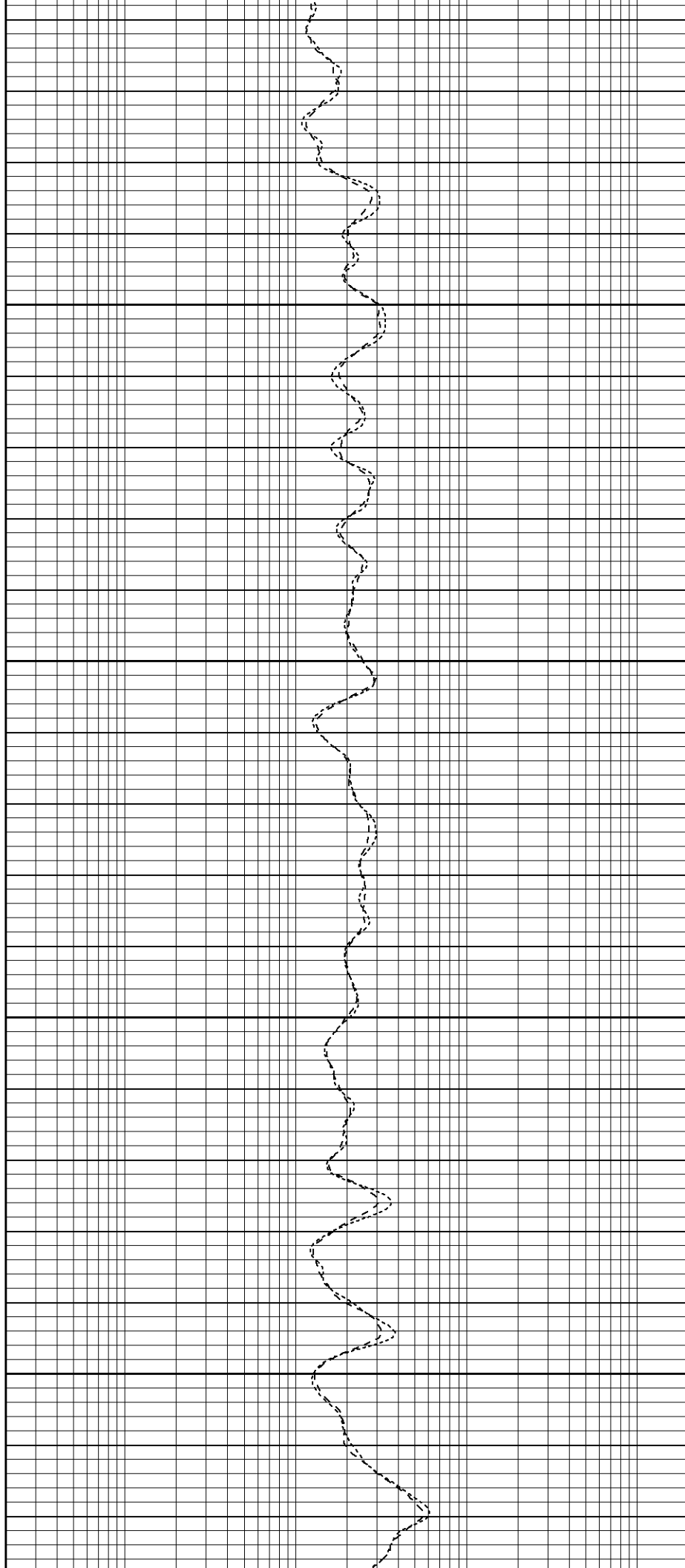


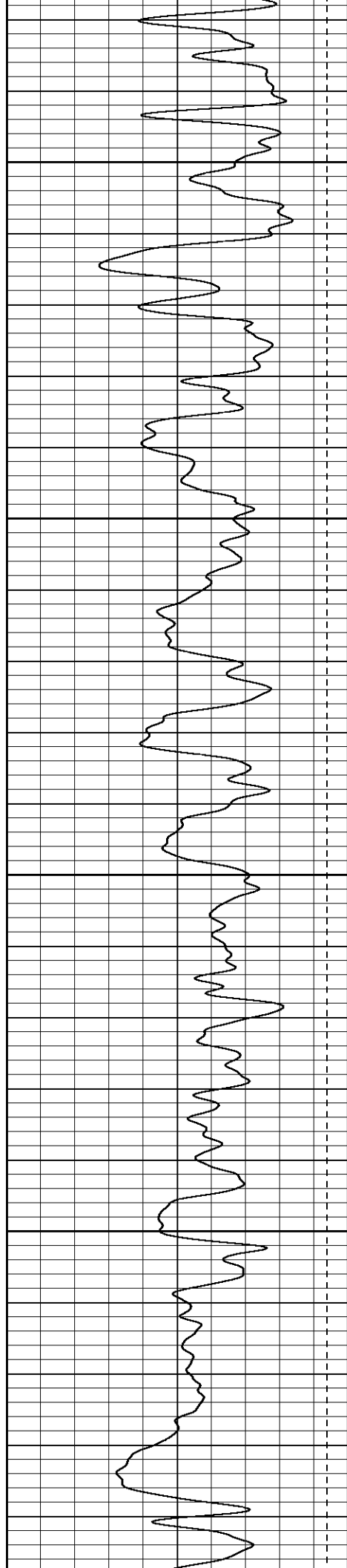
1400

1450

1500

1550



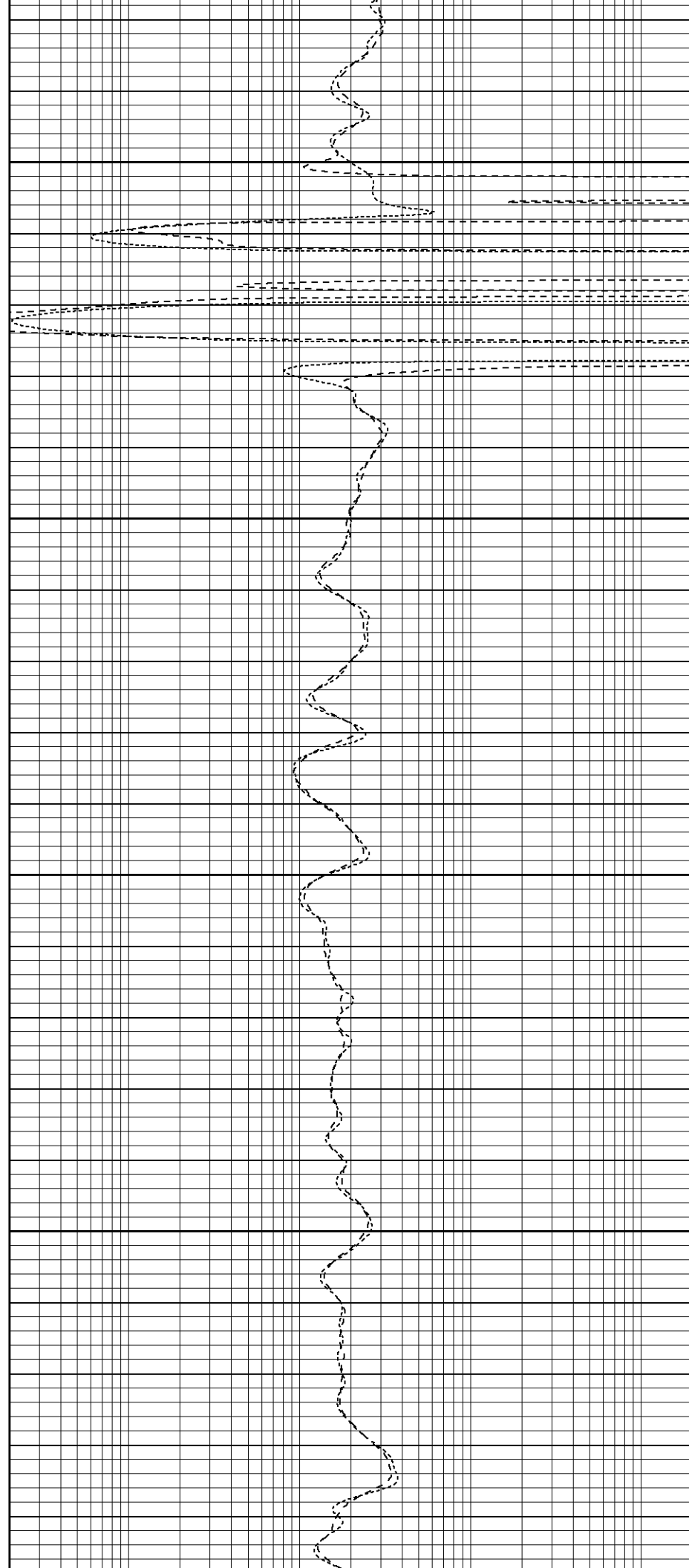


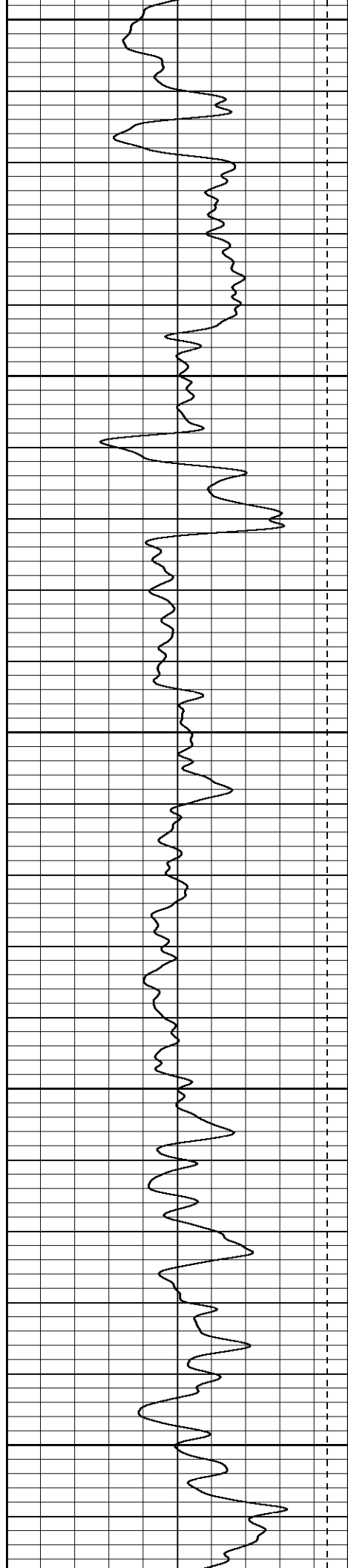
1600

1650

1700

1750





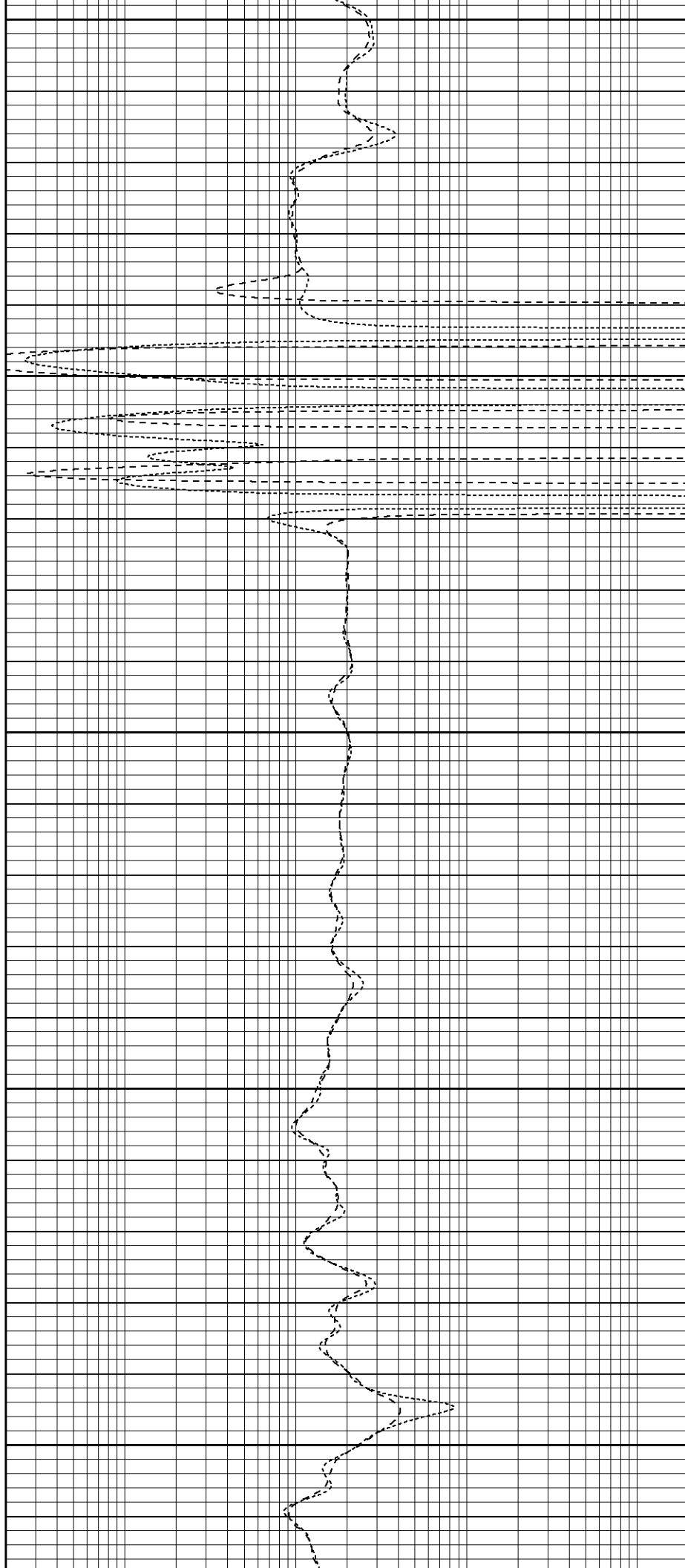
1800

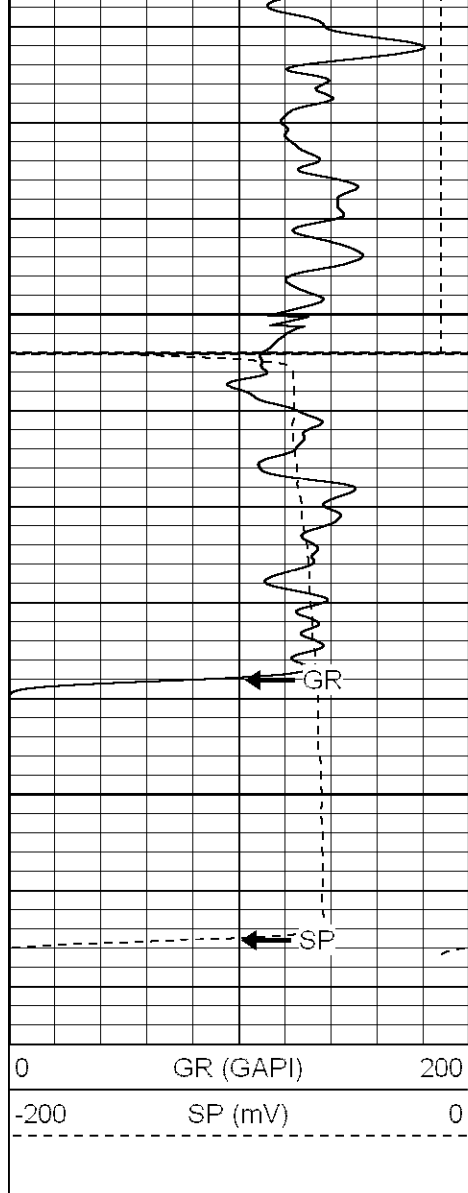
1850

1900

1950

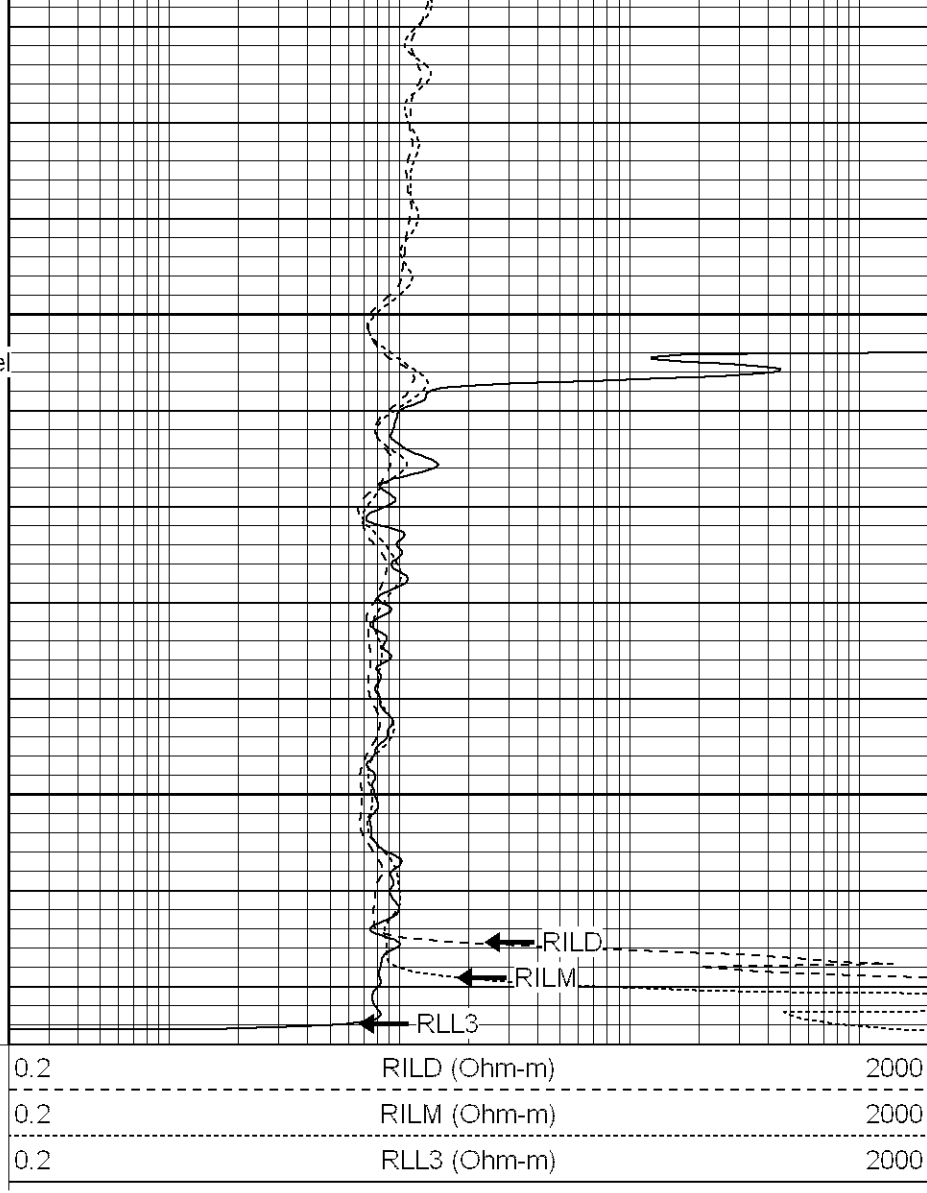
2000





2050
Fluid Level

2100



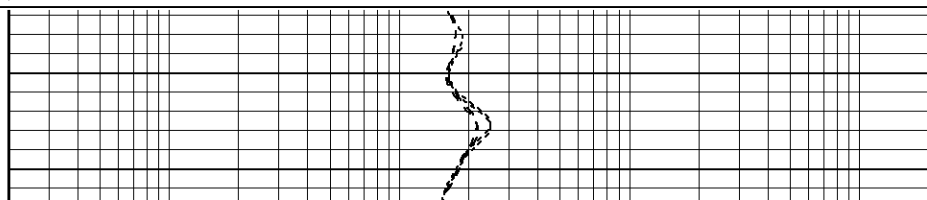
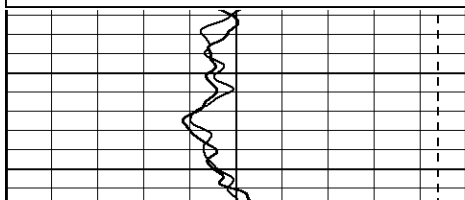
Patterson

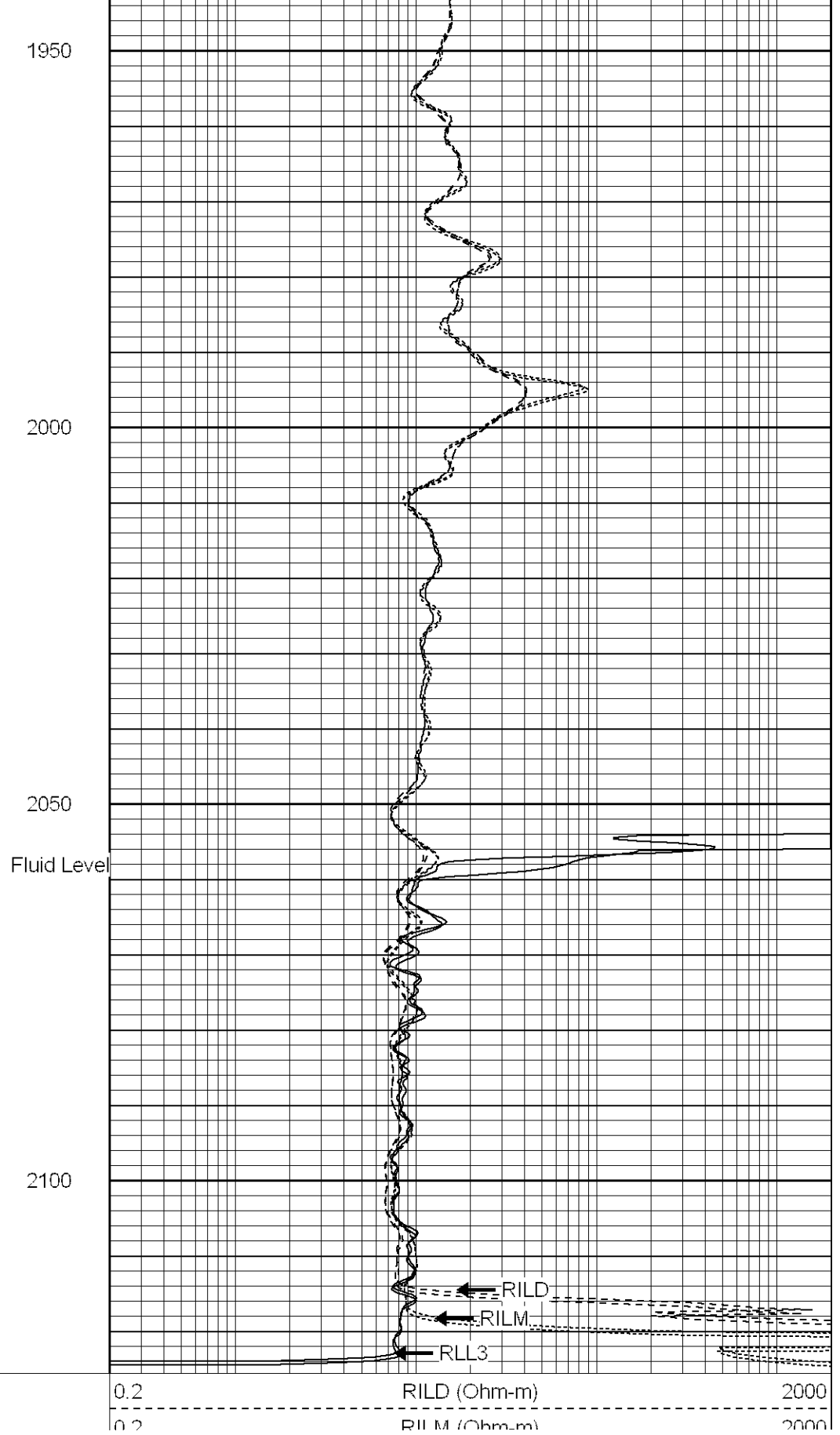
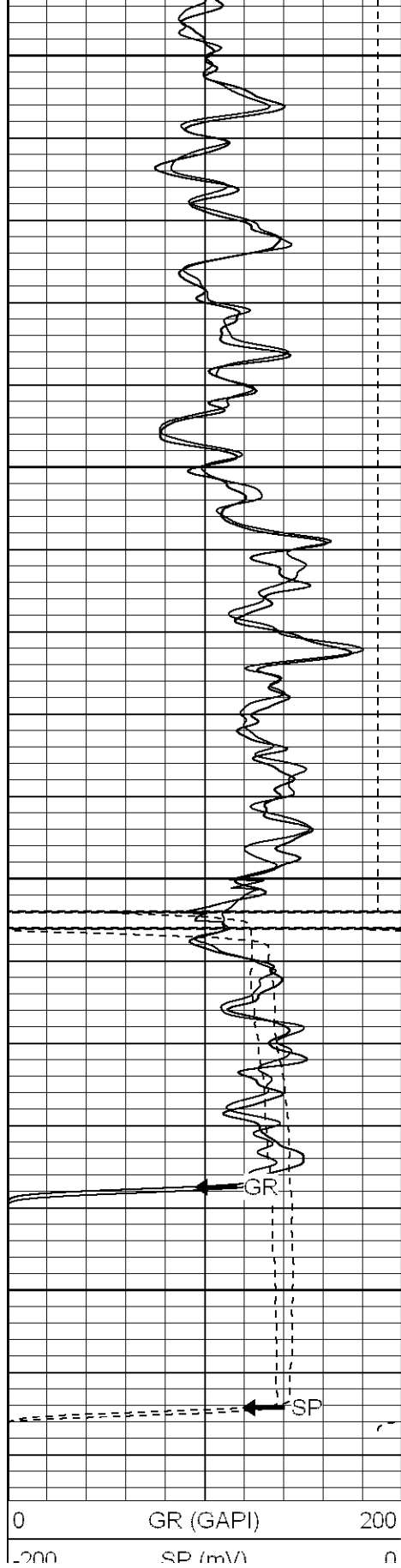
Repeat Pass

Database File: xtoge3301.db
 Dataset Pathname: pass1.2
 Presentation Format: dil
 Dataset Creation: Mon Jul 10 06:43:59 2006 by Calc Warrior 7.0 STD Ope
 Charted by: Depth in Feet scaled 1:240

0	GR (GAPI)	200
-200	SP (mV)	0
0	GR-repeat (GAPI)	200
-200	SP-repeat (mV)	0

0.2	RILD (Ohm-m)	2000
0.2	RILM (Ohm-m)	2000
0.2	RLL3 (Ohm-m)	2000
0.2	RLL3-repeat (Ohm-m)	2000
0.2	RILM-repeat (Ohm-m)	2000
0.2	RILD-repeat (Ohm-m)	2000





Dual Induction Calibration Report

Serial-Model:	5375-G
Surface Cal Performed:	Fri Jul 07 07:11:05 2006
Downhole Cal Performed:	Mon Jul 10 05:08:56 2006

Surface Calibration

	Readings			References			Results	
Loop:	Air	Loop		Air	Loop		m	b
Deep	0.007	0.626	V	0.000	500.000	mmho-m	808.448	-6.054
Medium	0.010	0.749	V	0.000	550.000	mmho-m	744.284	-7.677
Internal:	Zero	Cal		Zero	Cal		m	b
Deep	0.007	0.626	V	0.000	500.000	mmho-m	808.280	-5.935
Medium	0.010	0.749	V	0.000	550.000	mmho-m	744.155	-7.535

Downhole Calibration

	Readings			References			Results	
Internal:	Zero	Cal		Zero	Cal		m	b
Deep	-0.286	500.148	mmho-m	-0.118	499.985	mmho-m	0.999	0.168
Medium	-0.377	549.918	mmho-m	-0.141	549.955	mmho-m	1.000	0.236
Shallow	2.509	0.018	V	500.000	2.000	Ohm-m	199.883	-1.536

Compensated Density Calibration Report

Serial-Model:	902-2.75POH
Source / Verifier:	/
Master Calibration Performed:	Fri Jul 07 09:05:02 2006

Master Calibration

	Density		Far Detector	Near Detector
Magnesium	1.710	g/cc	937.76	456.53 cps
Aluminum	2.590	g/cc	165.85	225.46 cps
Spine Angle = 67.84			Density/Spine Ratio = 0.470	
	Size		Reading	
Small Ring	8.20	in	1.84	V
Large Ring	17.00	in	4.32	V

Neutron Calibration Report

Serial Number:	802
Tool Model:	2.75POH
Performed:	Sun Jun 25 11:36:50 2006

Tool Model: 2.75POH
Performed: Tue Jul 04 14:35:28 2006

Calibrator Value: 1.0 GAPI
Background Reading: 0.0 cps
Calibrator Reading: 1.0 cps
Sensitivity: 0.6000 GAPI/cps

Sensor	Offset (ft)	Schematic	Description	Len (ft)	OD (in)	Wt (lb)
CHD	39.37		None	0.75	1.50	5.00
GR	37.64		GR-2.75POH (804) Probe	3.73	2.75	43.00
NEU	32.10		NEU-2.75POH (802) Probe Epithermal	4.75	2.75	58.00
LSD	24.47		CDL-2.75POH (902) Probe	8.43	2.75	106.00
DCAL	24.19		Probe	0.89	3.50	20.00
SSD	23.95					
10pin	21.72					
CILD	10.60		DIL-G (5375) Gearhart	20.83	4.00	345.00
SP	10.60					
CILM	6.89					
RLL3	1.70					

Dataset: /field/well/run1/_plots/_jobs_/dil
Total Length: 39.37 ft
Total Weight: 577.00 lb
O.D. 4.00 in