

Patterson

**COMPENSATED
DENSITY
LOG**

Company	Pioneer Natural Resources	Company	Pioneer Natural Resources
Well	Le Mans 44-11 Tr	Well	Le Mans 44-11 Tr
Field	Purgatoire River	Field	Purgatoire River
County	Las Animas	County	Las Animas
State	Colorado	State	Colorado
Location:	API # : 05 071 08643 00 483' FSL & 211' FEL	Other Services	SIL
Permanent Datum	SEC 11 TWP 33S RGE 67W	Elevation	
Log Measured From	Ground Level	K.B. 7577'	
Drilling Measured From	Kelly Bushing 4' Above G.L.	D.F. -----	
	Kelly Bushing	G.L. 7573'	
Date	12-21-05		
Run Number	Two		
Depth Driller	1385'		
Depth Logger	1385'		
Bottom Logged Interval	1383'		
Top Log Interval	Surface		
Casing Driller	8 5/8" @ 378'		
Casing Logger	378'		
Bit Size	7 7/8"		
Type Fluid in Hole	Water		
Density / Viscosity	///		
pH / Fluid Loss	///		
Source of Sample	///		
Rm @ Meas. Temp	///		
Rmf @ Meas. Temp	///		
Rmc @ Meas. Temp	///		
Source of Rmf / Rmc	///		
Rm @ BHT	///		
Time Circulation Stopped	6.00 A.M.		
Time Logger on Bottom	7.45 A.M.		
Maximum Recorded Temperature	78 DEG F		
Equipment Number	T720		
Location	Trinidad		
Recorded By	M. Norton		
Witnessed By	Mr. Ray Decker		

<<< Fold Here >>>

All interpretations are opinions based on inferences from electrical or other measurements and we cannot and do not guarantee the accuracy or correctness of any interpretation, and we shall not, except in the case of gross or willful negligence on our part, be liable or responsible for any loss, costs, damages, or expenses incurred or sustained by anyone resulting from any interpretation made by any of our officers, agents or employees. These interpretations are also subject to our general terms and conditions set out in our current Price Schedule.

Comments

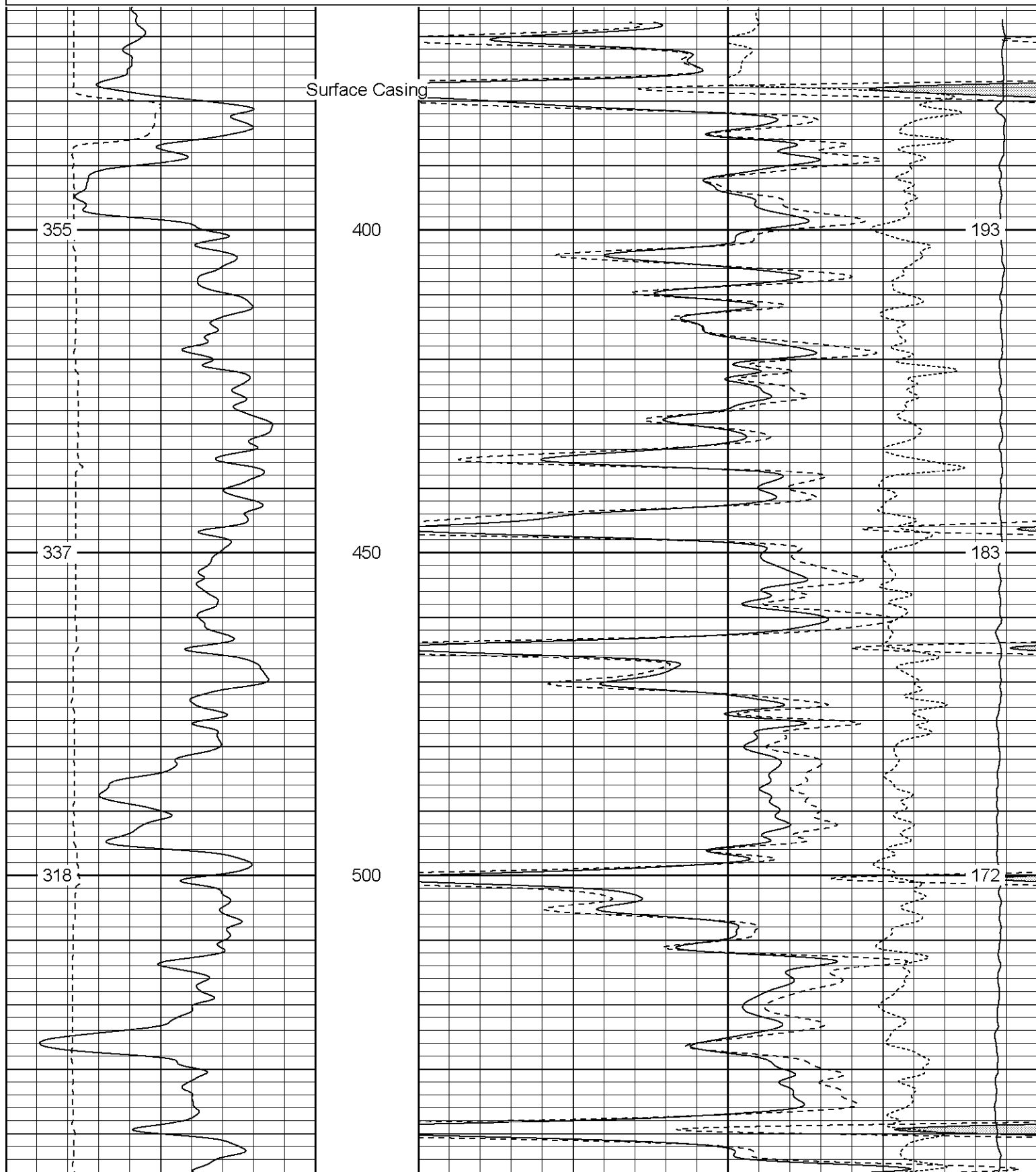
Density Porosity Presented On Sandstone Matrix.
ABHV Calculated For 5 1/2" Casing.
Well Directions:
Sarcillio Left At Duck Pond, Main Road Thru Green Gate, Left At Y At Top Of Hill,
At Next Y Stay Right, First Right Thru Double Gates, First Right To Location.

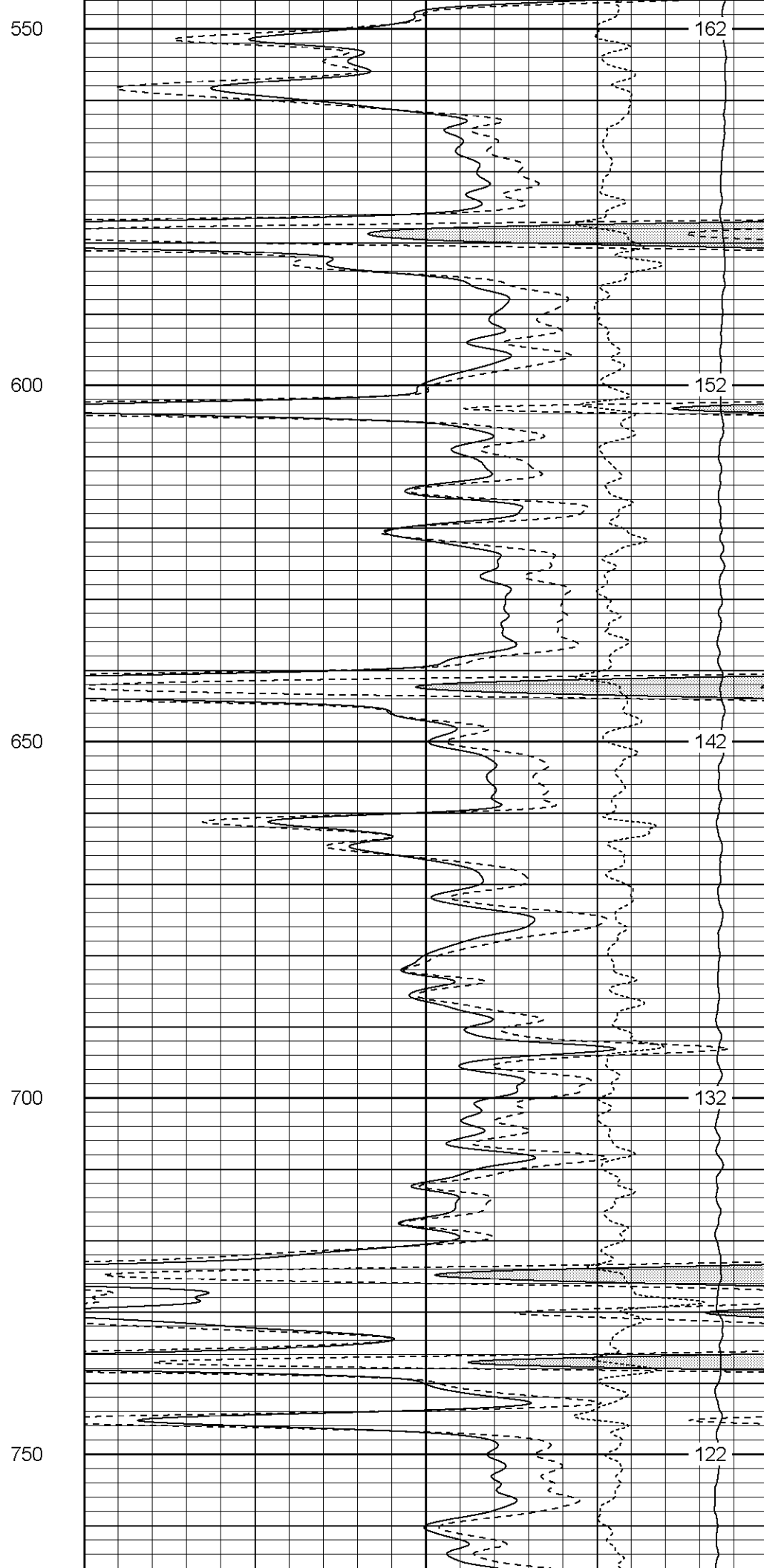
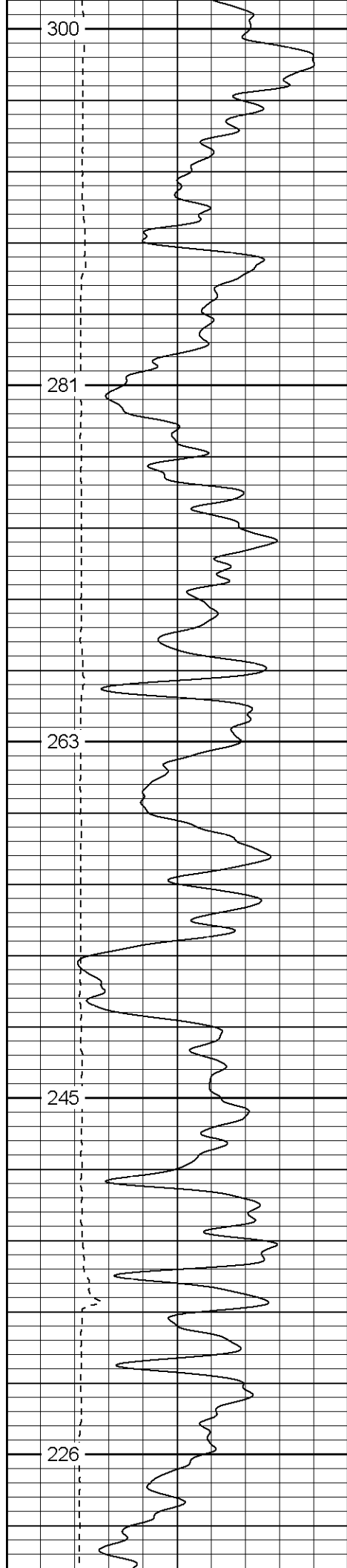
Patterson

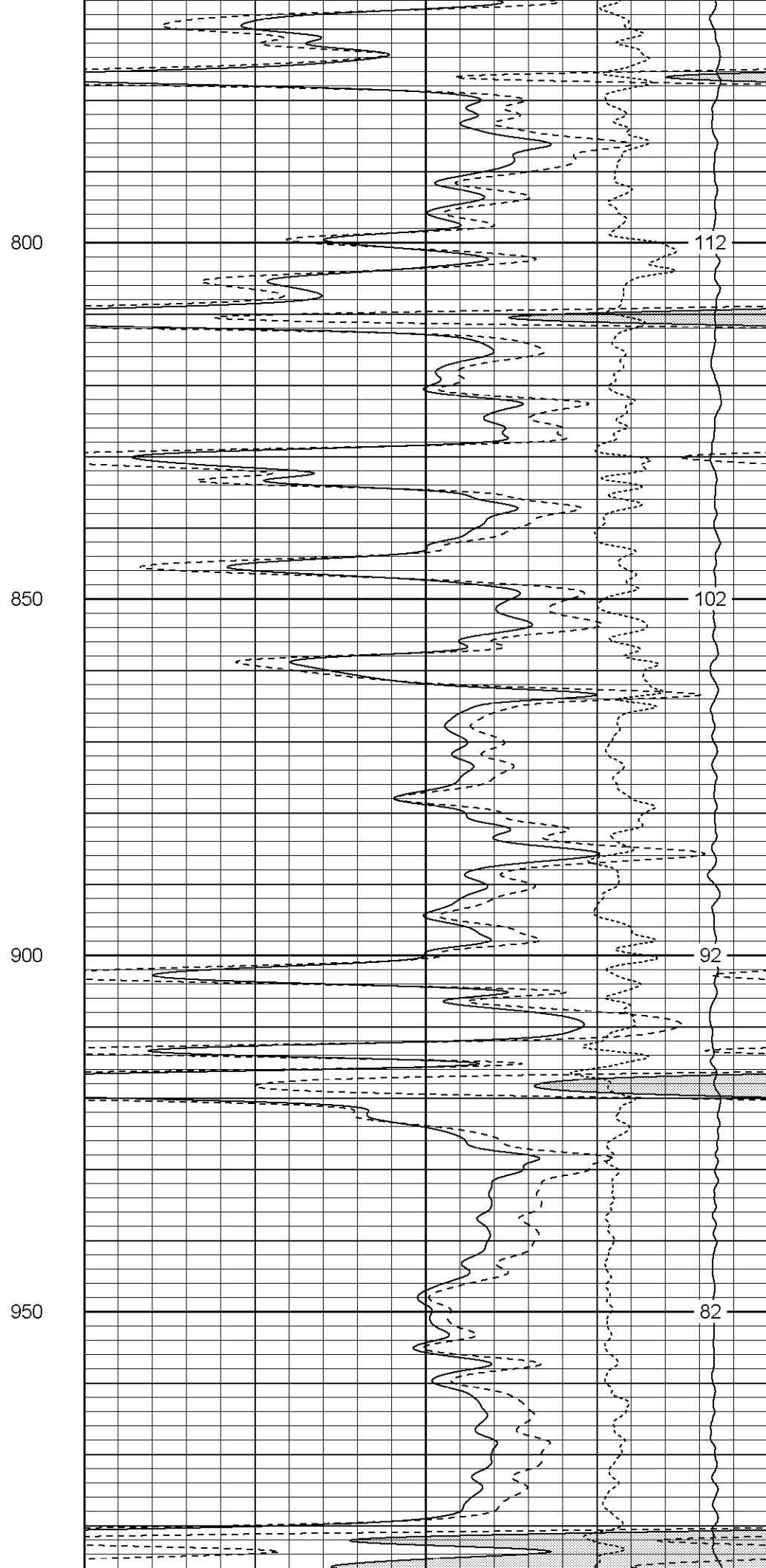
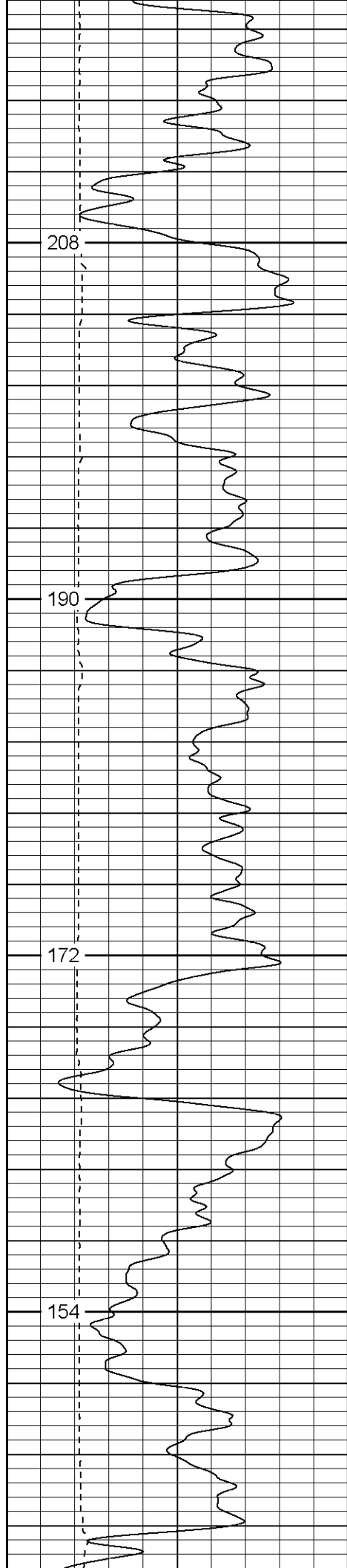
Main Pass

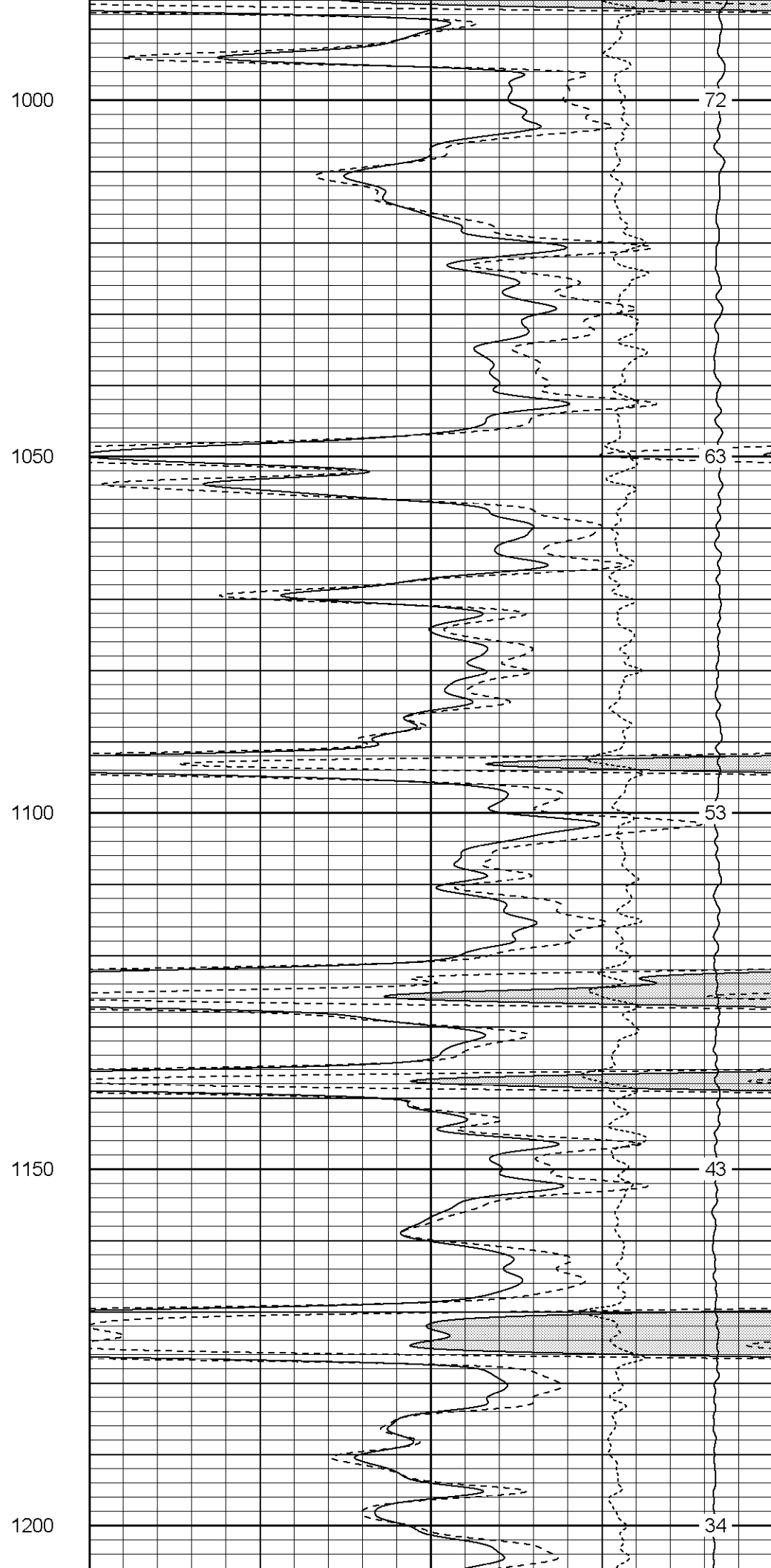
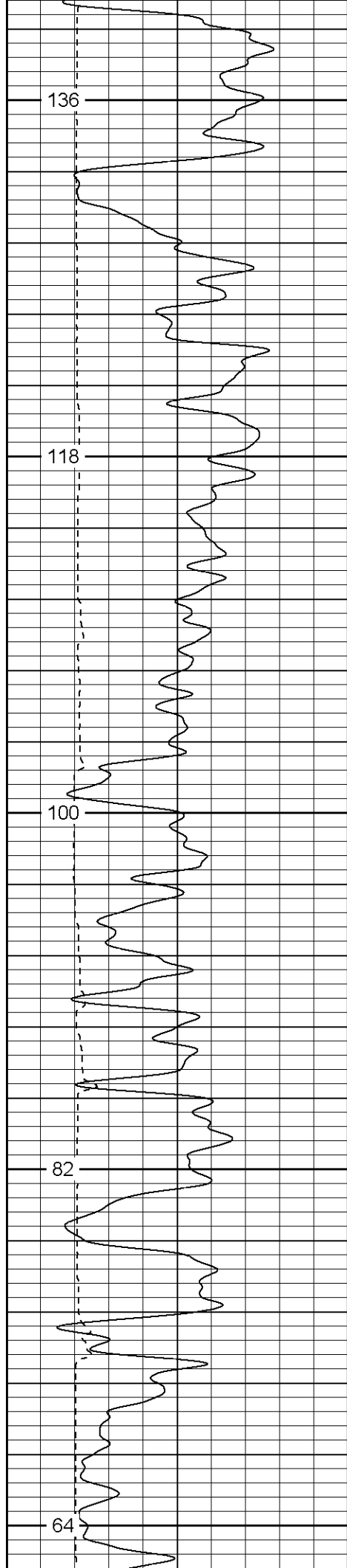
Database File: lemanstr.db
Dataset Pathname: pass4.1
Presentation Format: cdl
Dataset Creation: Wed Dec 21 08:56:10 2005 by Calc Warrior 7.0 STD Ope
Charted by: Depth in Feet scaled 1:240

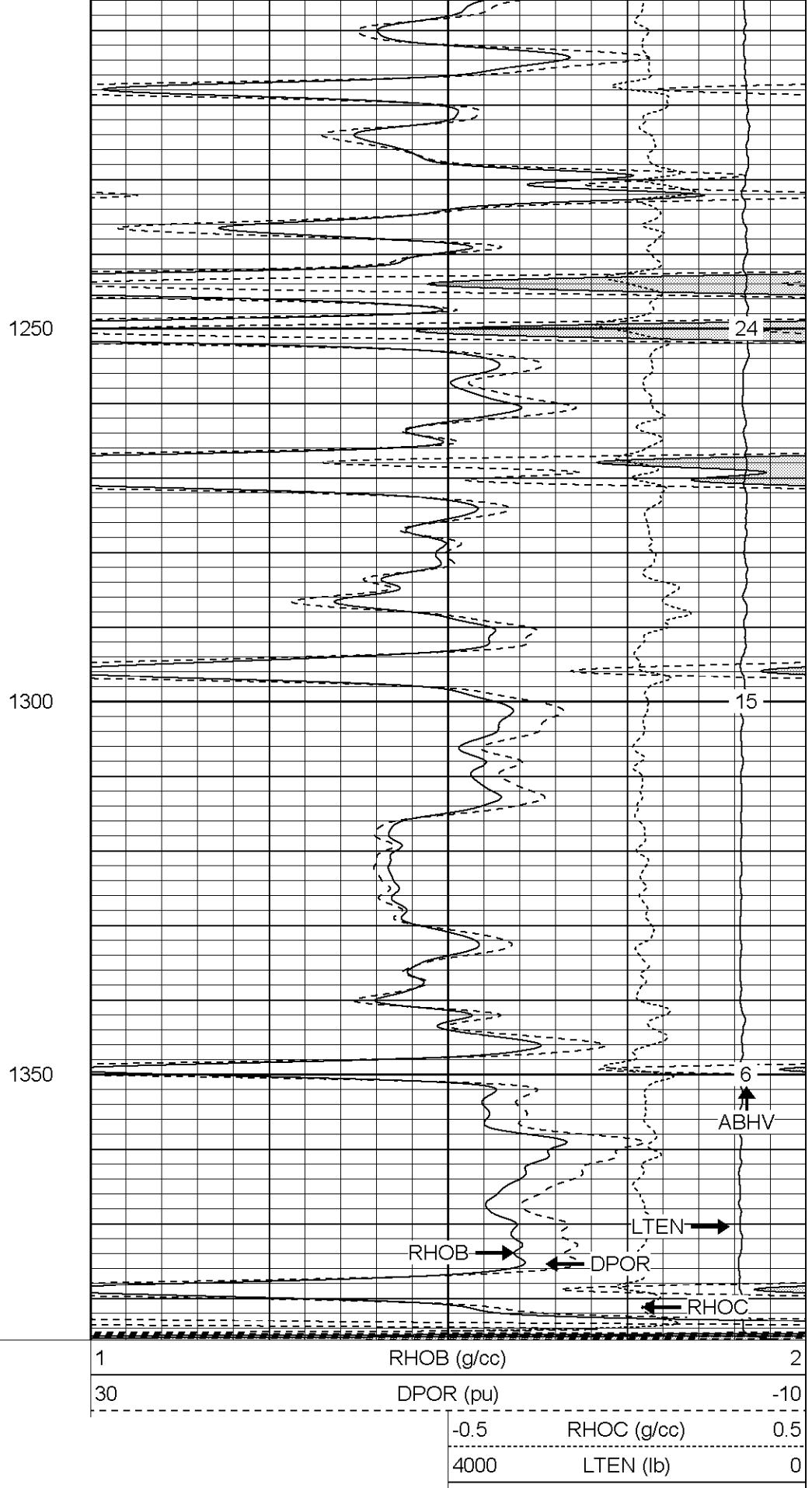
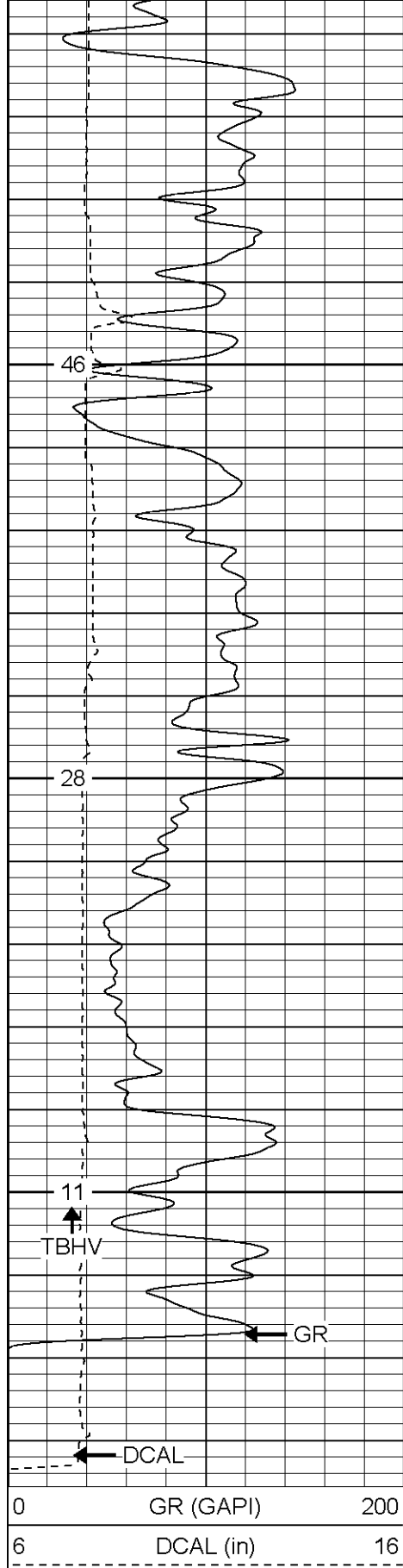
0	GR (GAPI)	200	1	RHOB (g/cc)	2
6	DCAL (in)	16	30	DPOR (pu)	-10
			-0.5	RHOC (g/cc)	0.5
			4000	LTEN (lb)	0







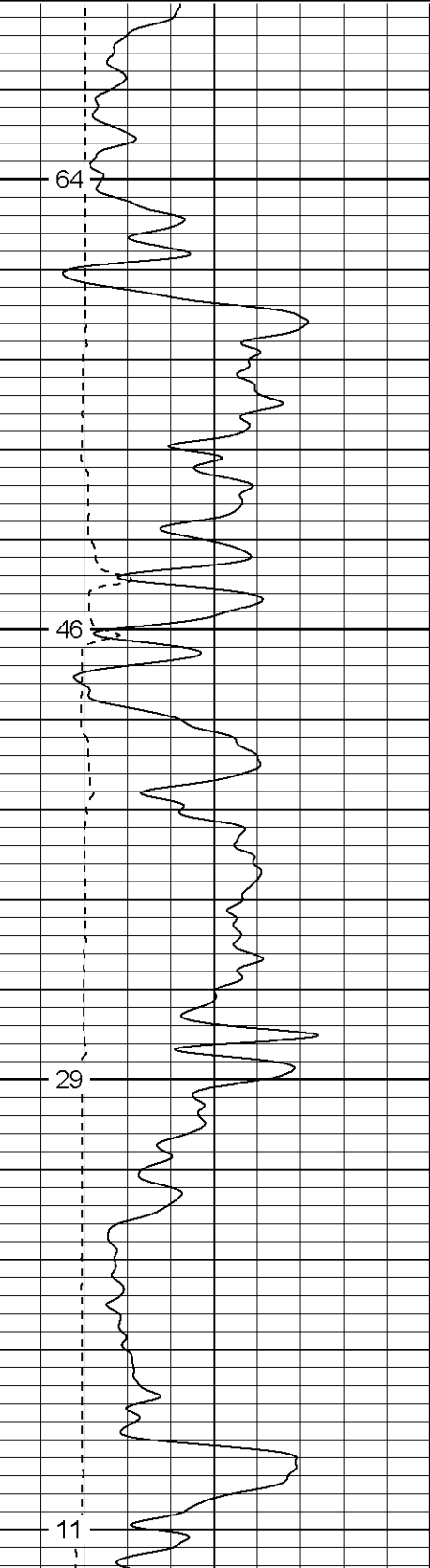




Database File: lemanstr.db
Dataset Pathname: pass3.1
Presentation Format: cdl
Dataset Creation: Wed Dec 21 08:16:48 2005 by Calc Warrior 7.0 STD Ope
Charted by: Depth in Feet scaled 1:240

0 GR (GAPI) 200
6 DCAL (in) 16

1 RHOB (g/cc) 2
30 DPOR (pu) -10
-0.5 RHOC (g/cc) 0.5
4000 LTEN (lb) 0

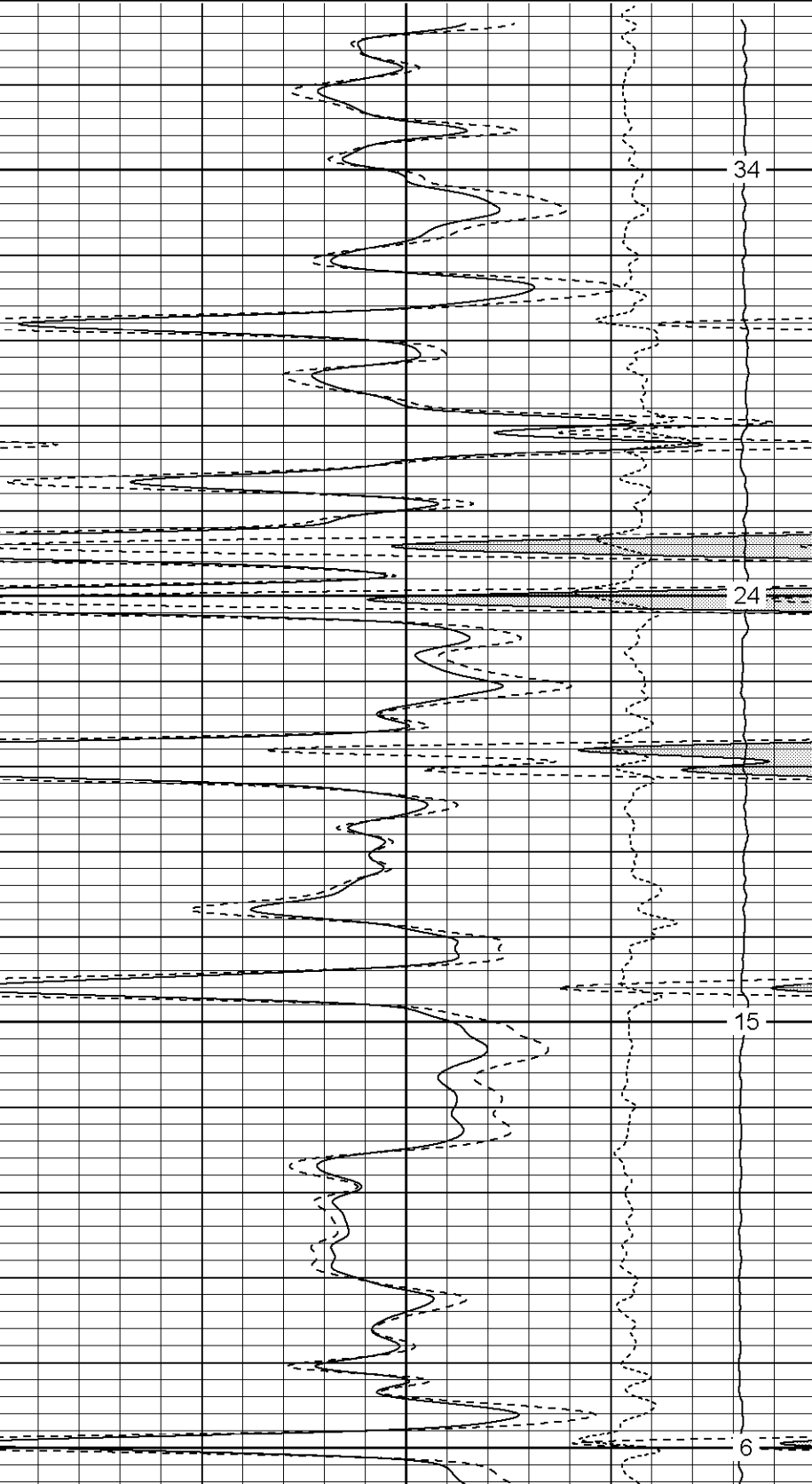


1200

1250

1300

1350

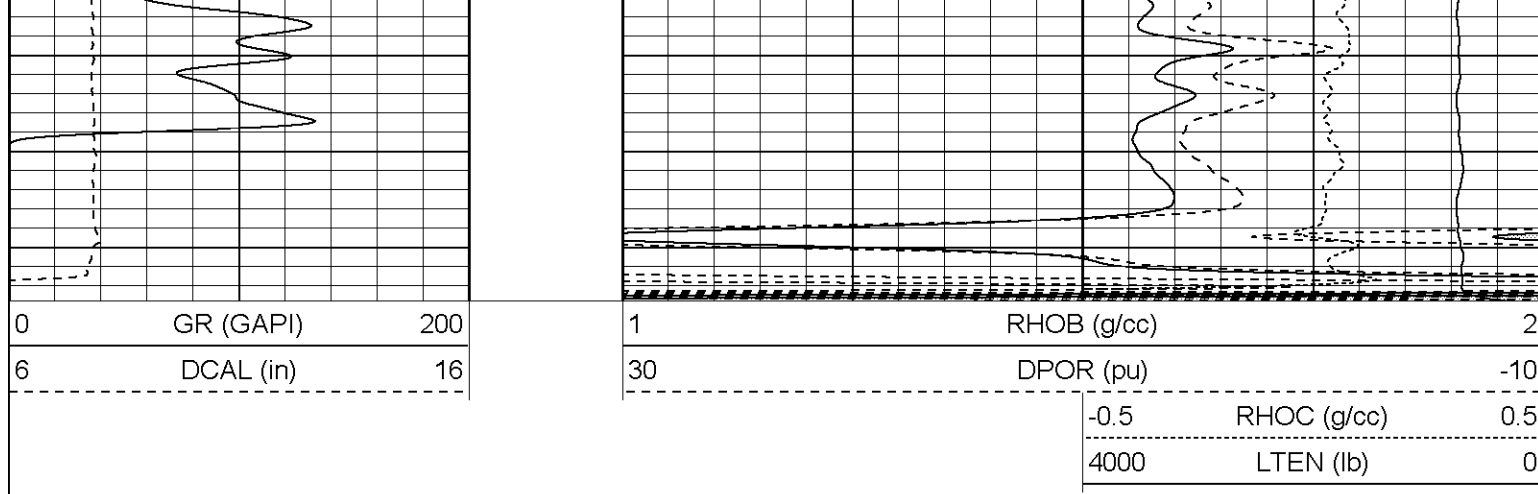


34

24

15

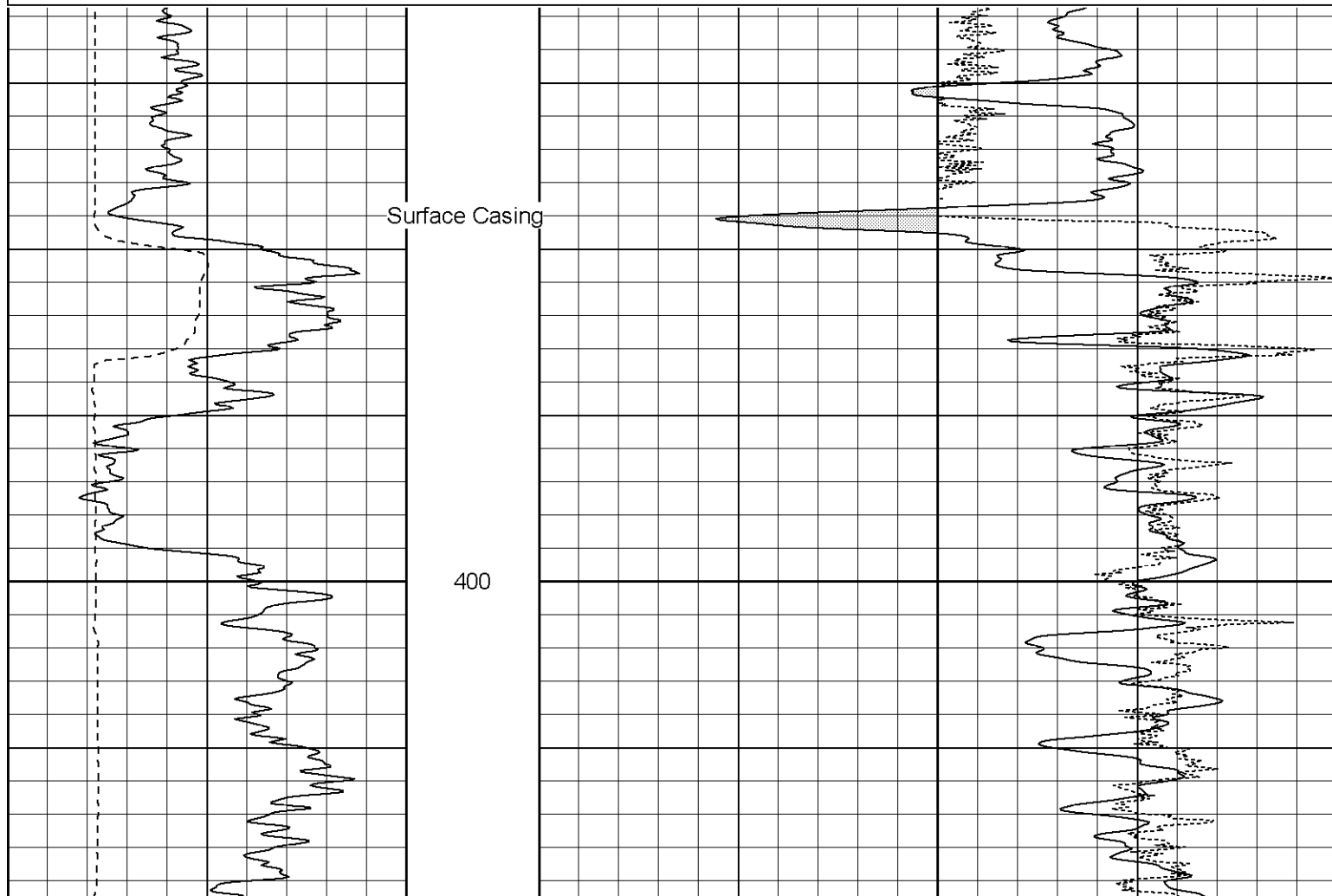
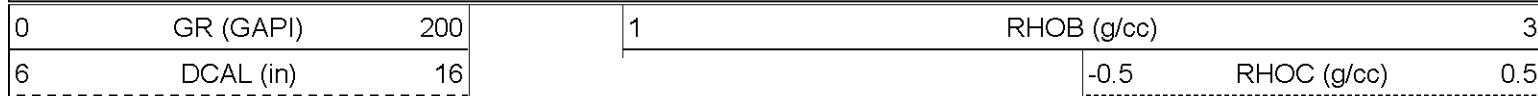
6

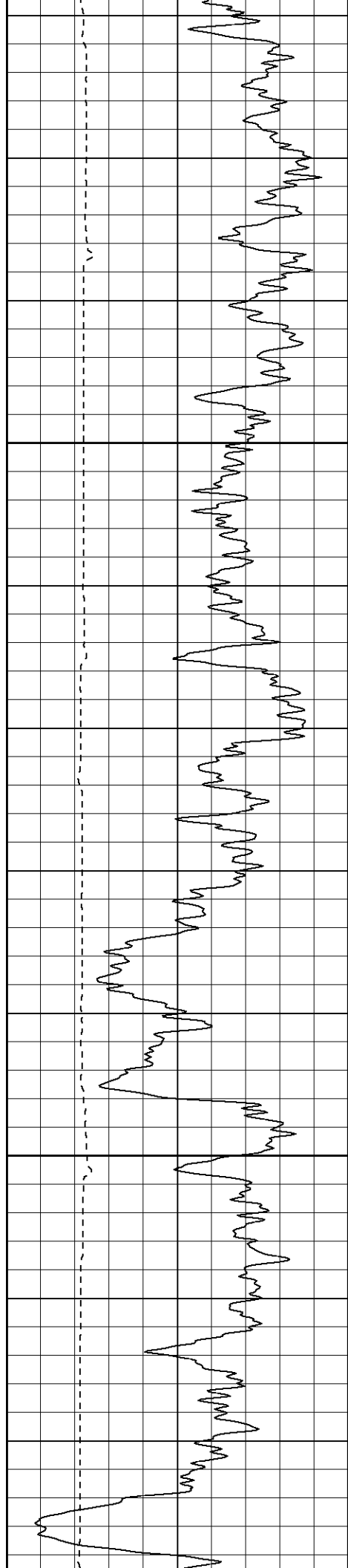


Patterson

High Resolution Pass

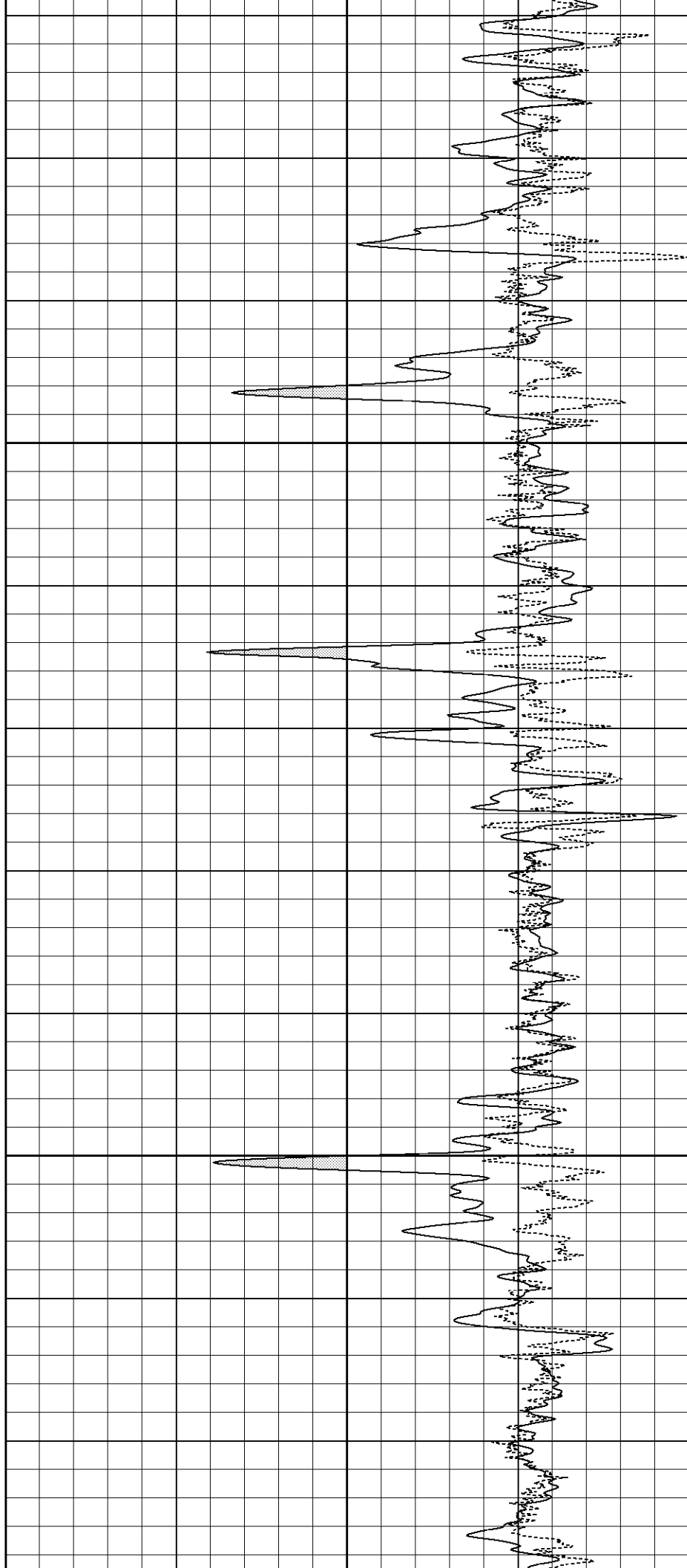
Database File: lemanstr.db
 Dataset Pathname: pass4.2
 Presentation Format: cdlhr
 Dataset Creation: Wed Dec 21 10:39:15 2005 by Calc Warrior 7.0 STD Ope
 Charted by: Depth in Feet scaled 1:120

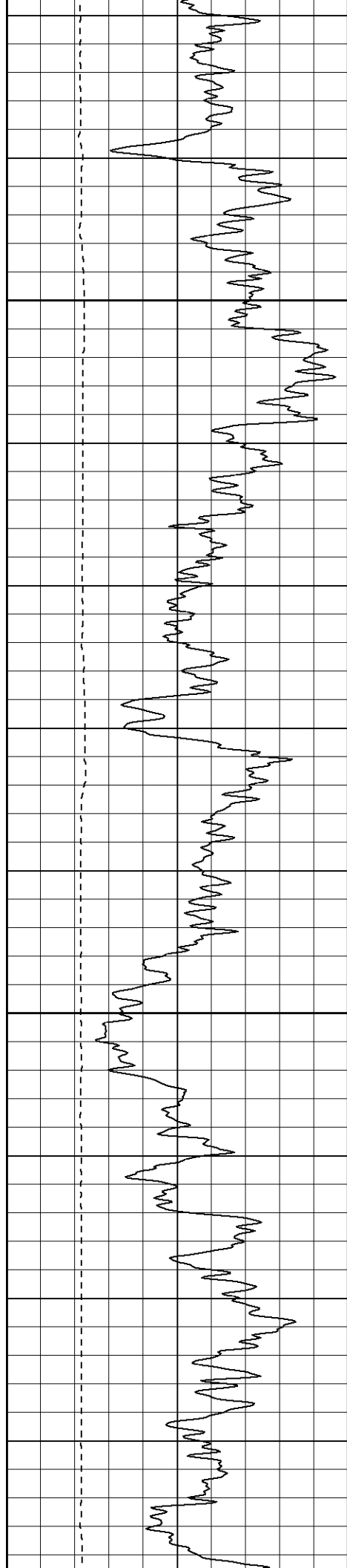




450

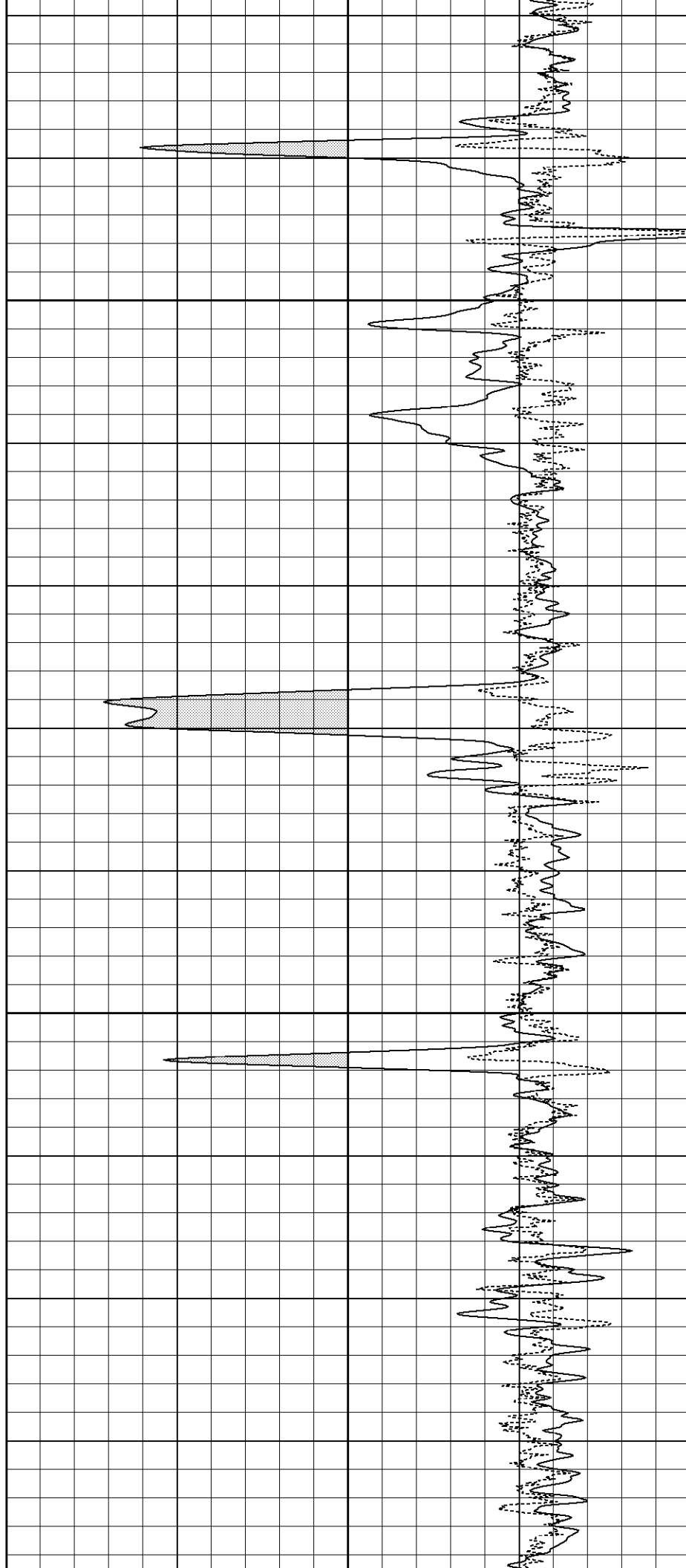
500

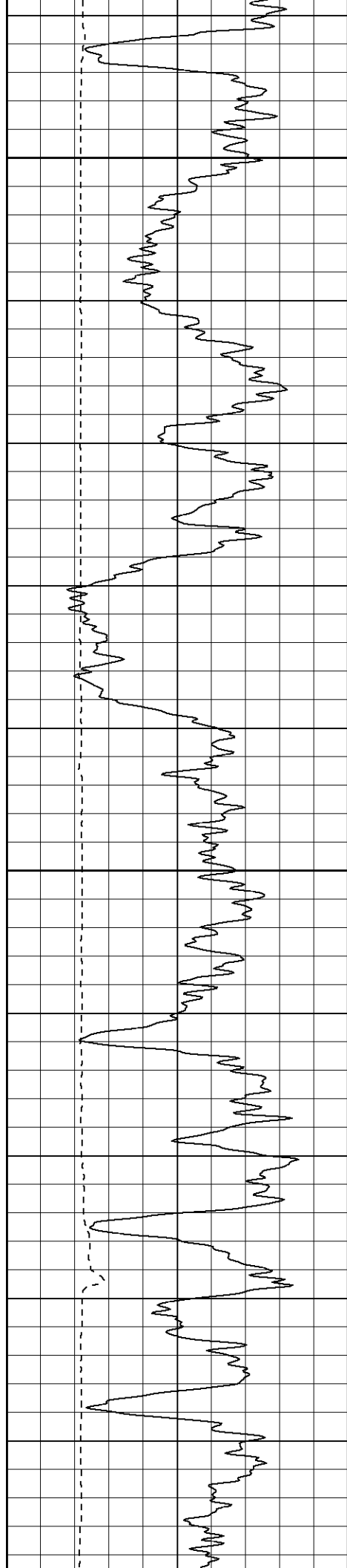




550

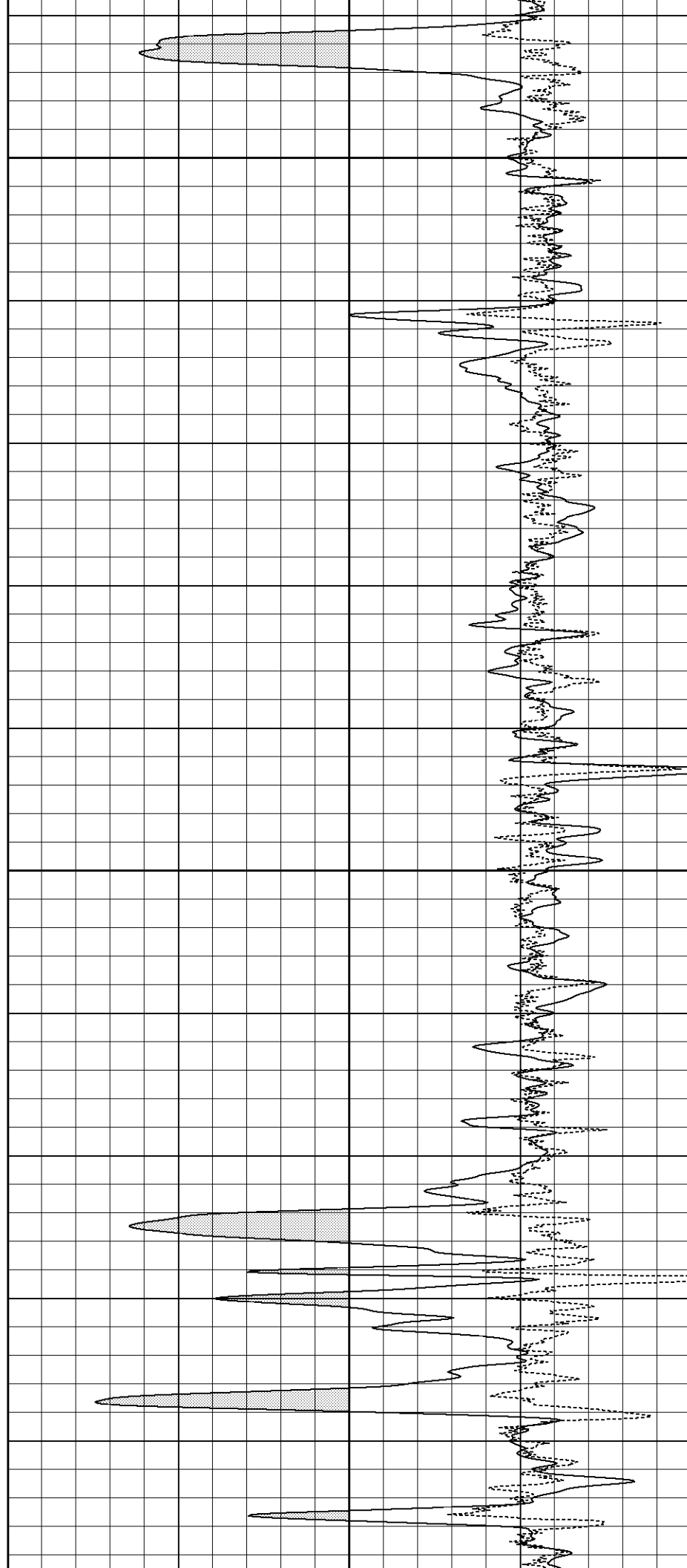
600

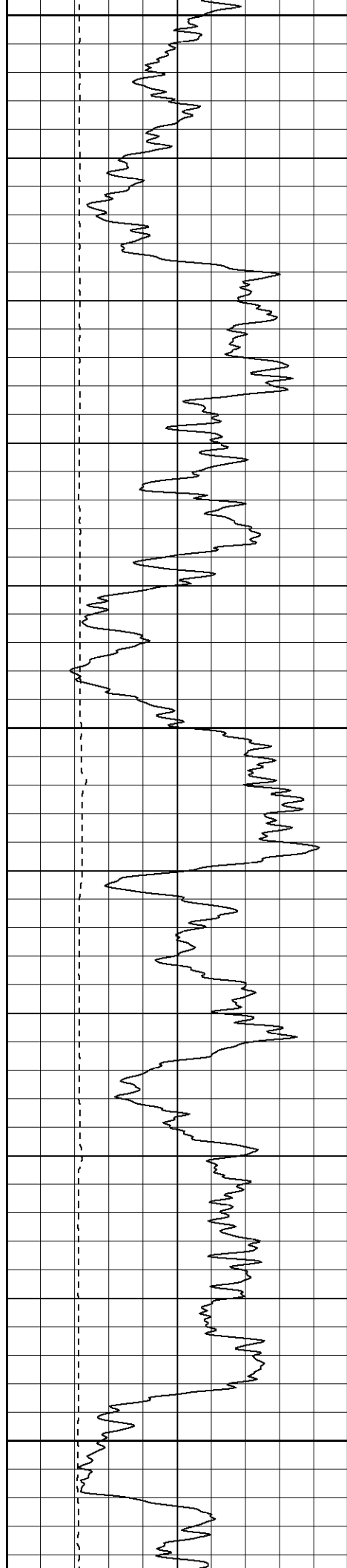




650

700

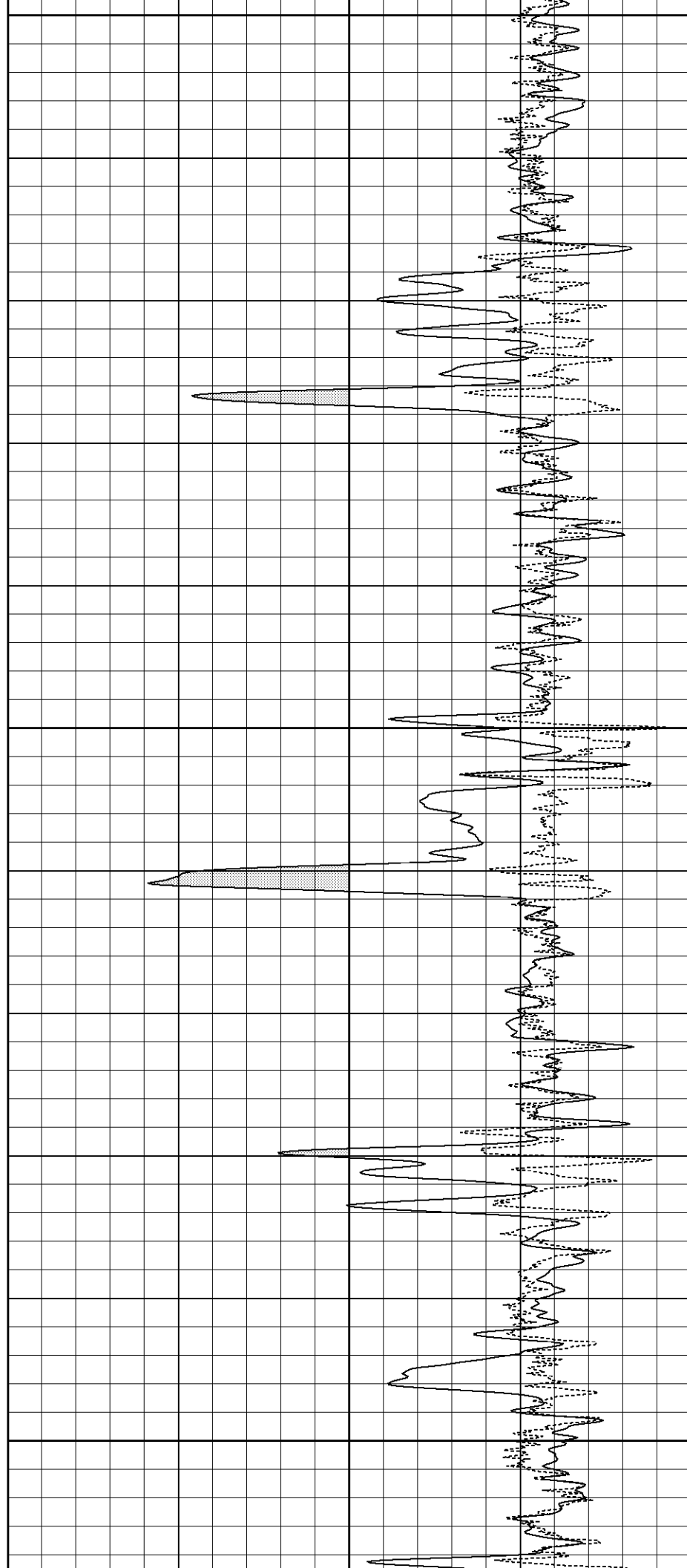


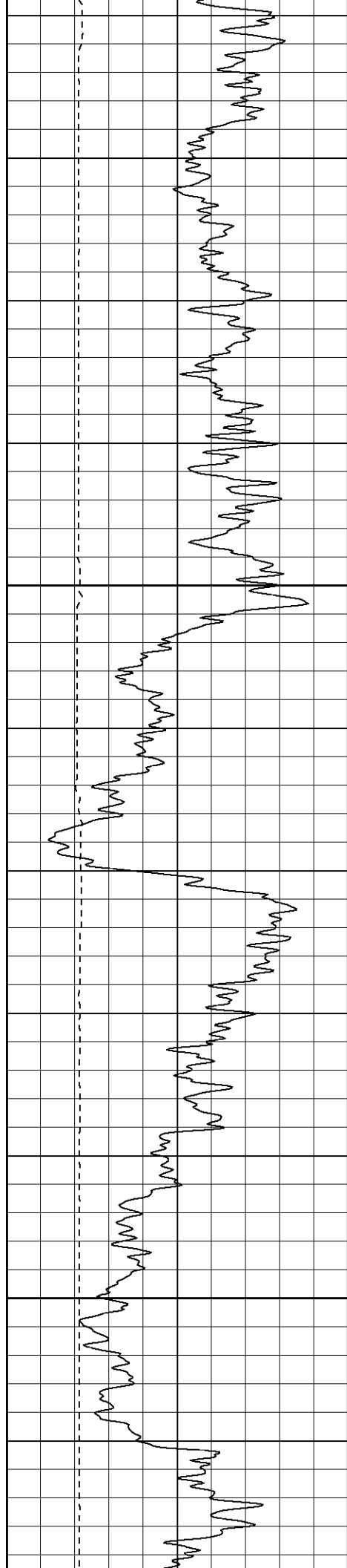


750

800

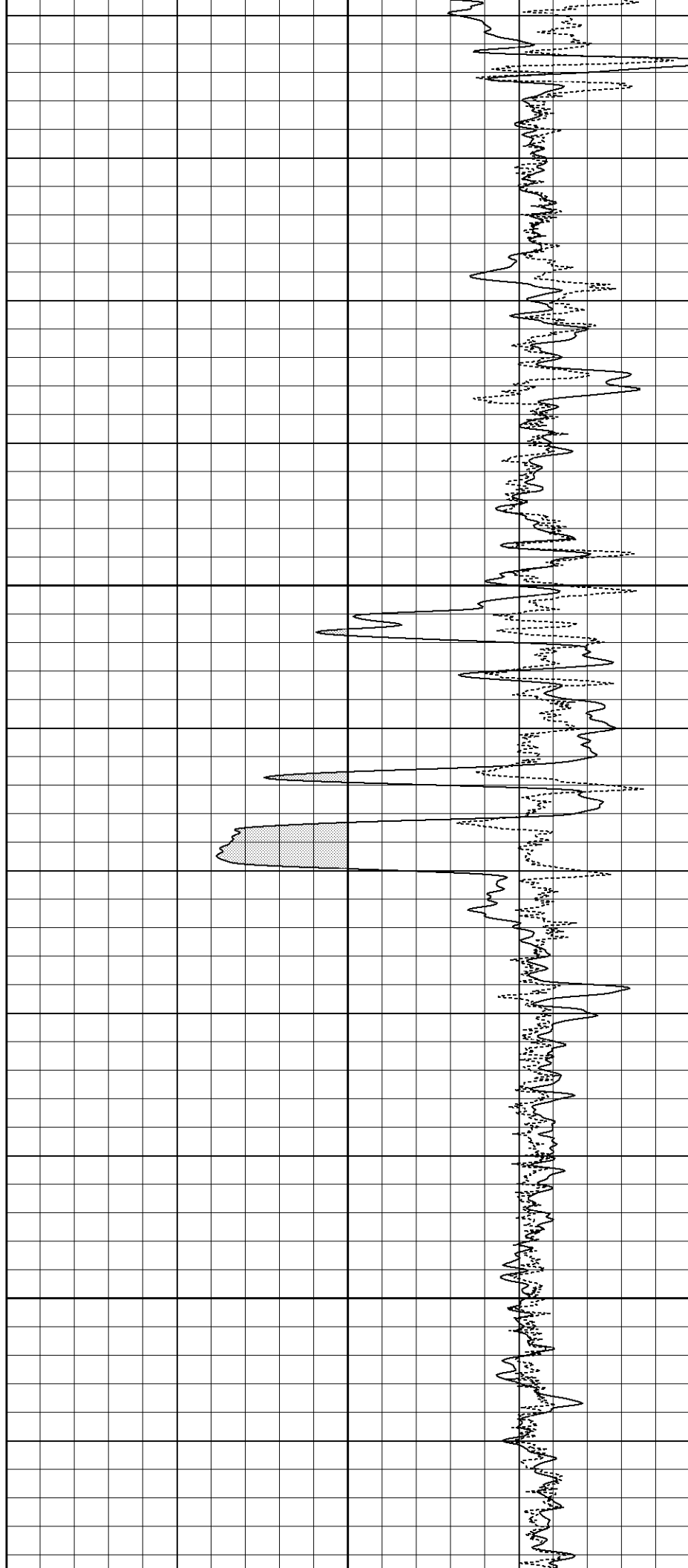
850

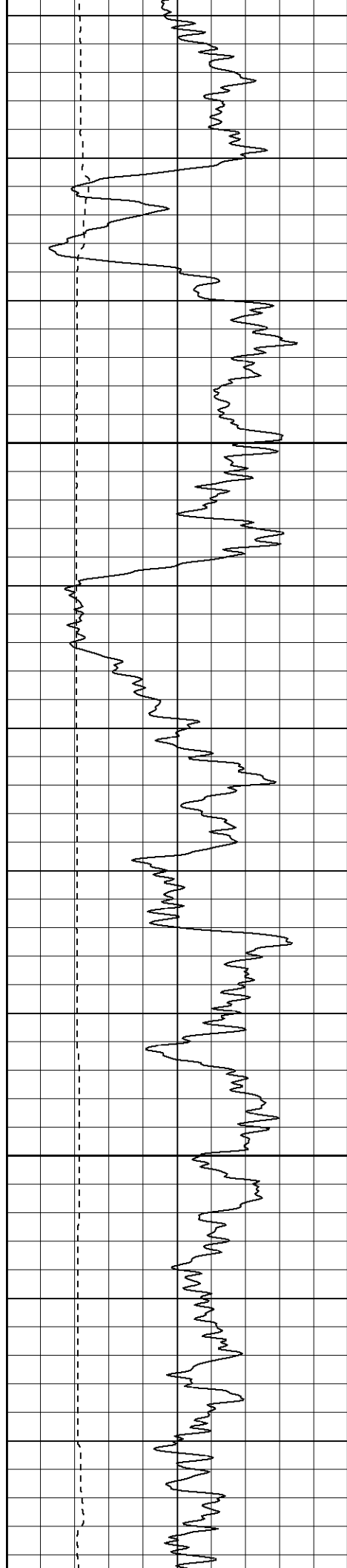




900

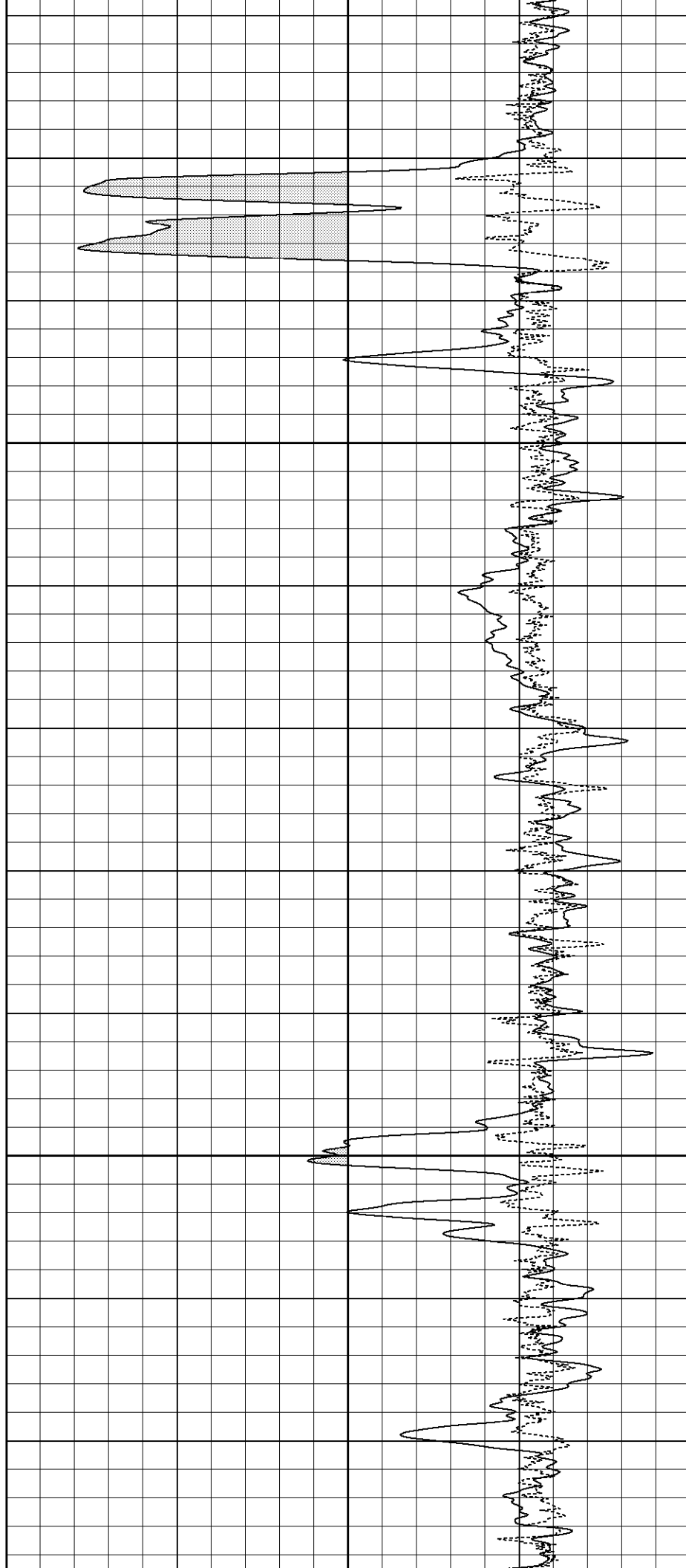
950

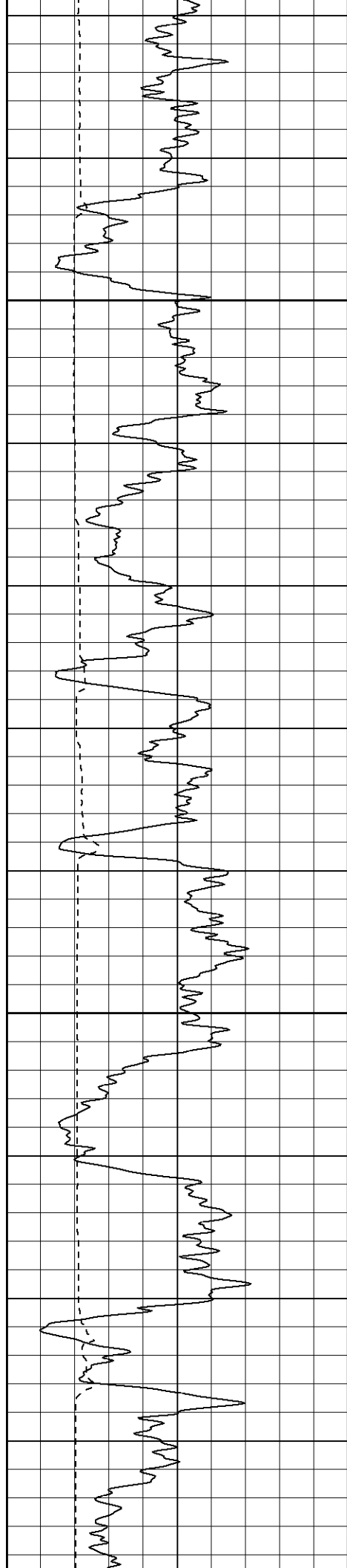




1000

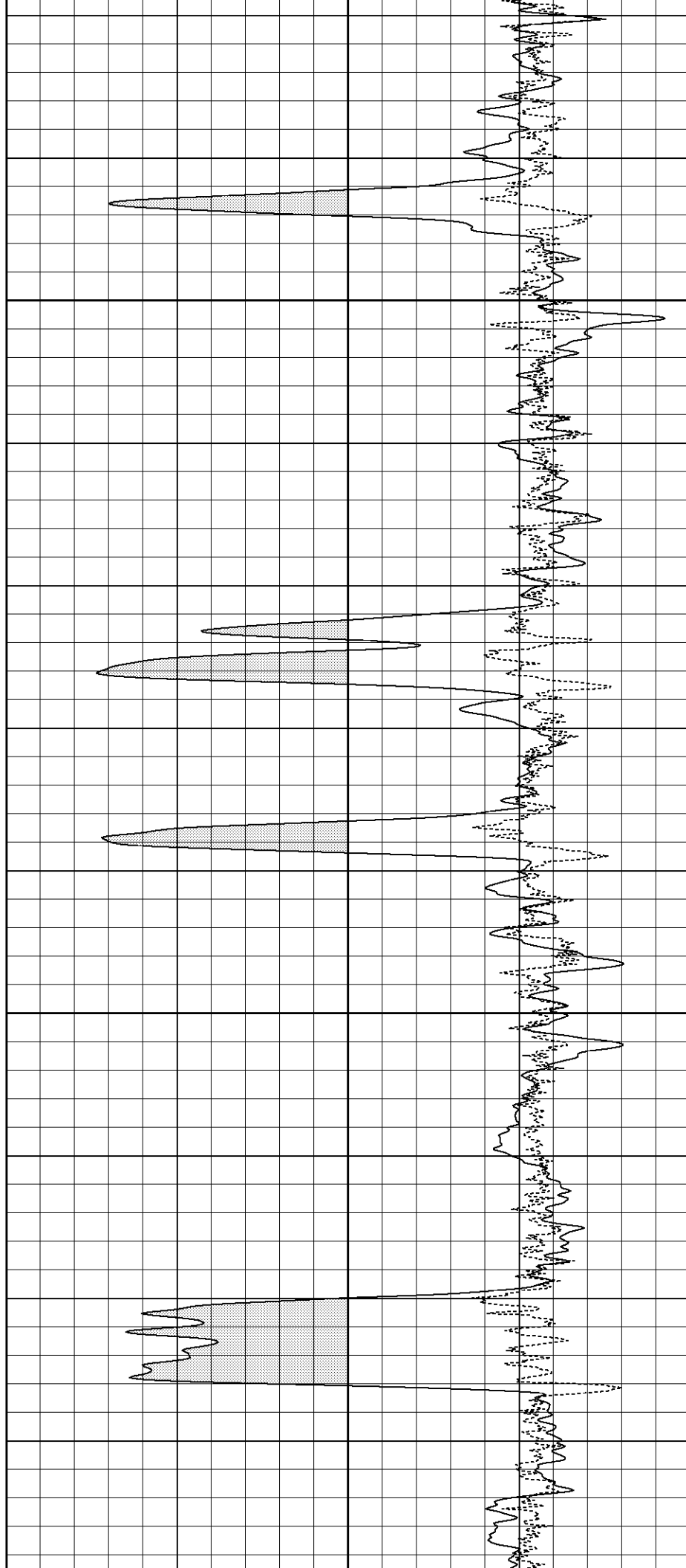
1050

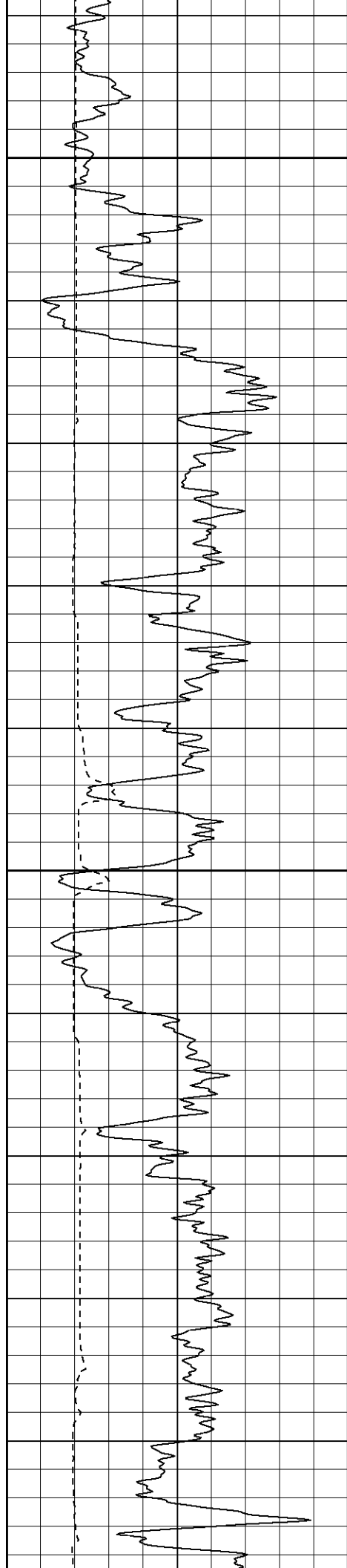




1100

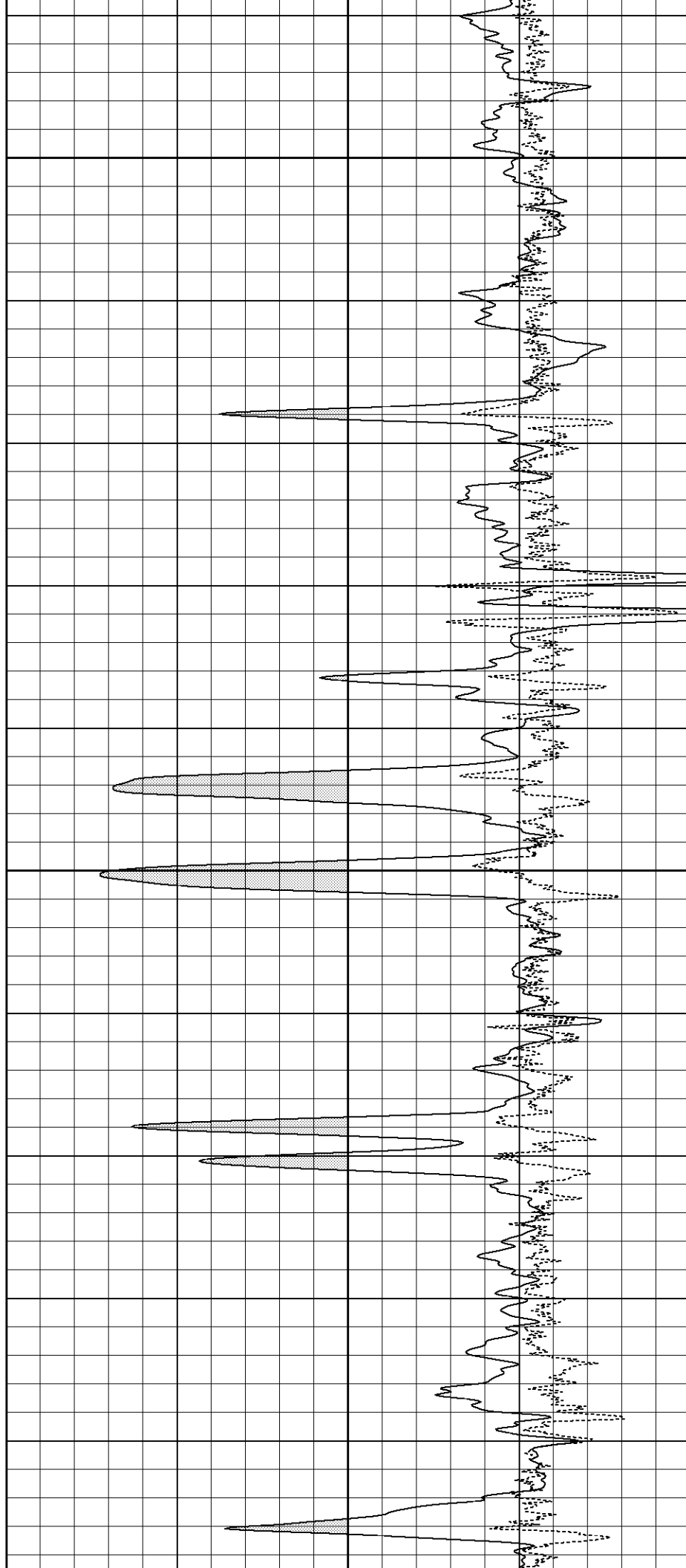
1150

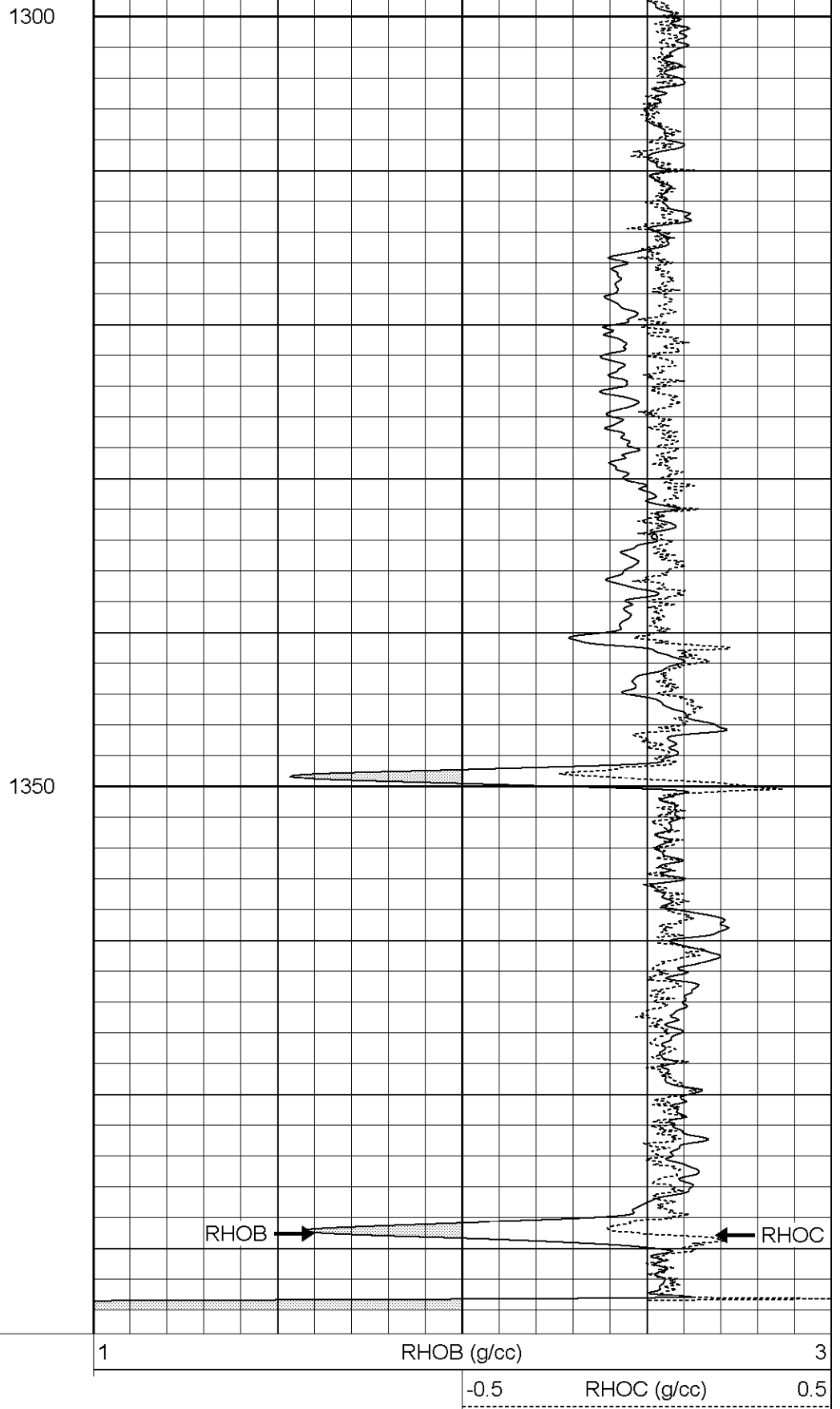
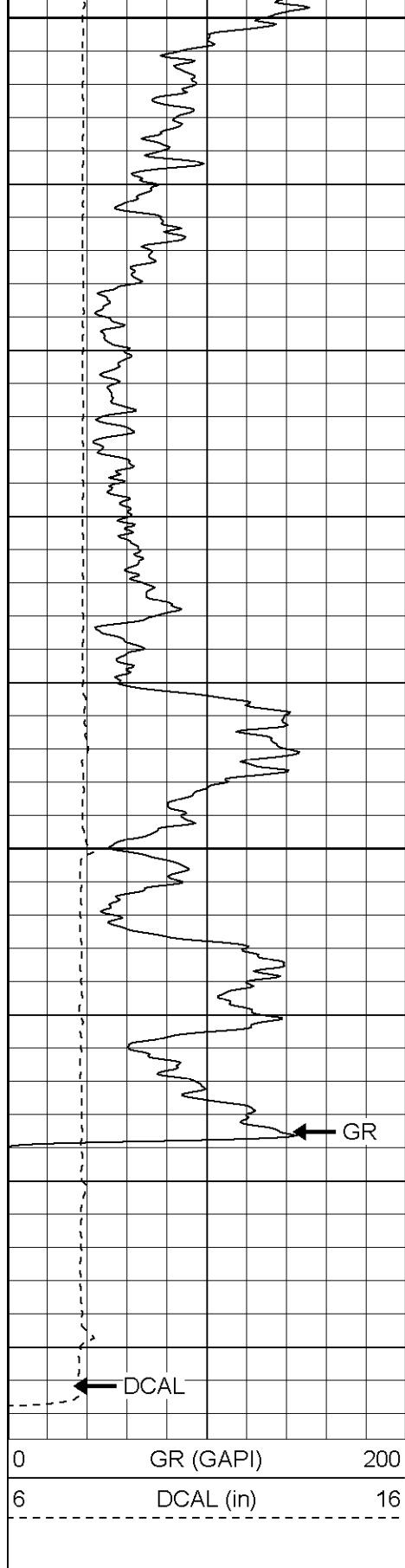




1200

1250





Compensated Density Calibration Report

Serial-Model:	2119-O
Source / Verifier:	csv-j12 / blks
Master Calibration Performed:	Mon Dec 12 10:41:17 2005

	Density		Far Detector	Near Detector	
Magnesium	1.710	g/cc	1004.16	626.12	cps
Aluminum	2.590	g/cc	223.33	413.83	cps
Spine Angle = 74.60			Density/Spine Ratio = 0.564		
	Size		Reading		
Small Ring	7.85	in	4.00	V	
Large Ring	14.00	in	8.81	V	

Gamma Ray Calibration Report					
Serial Number:	2119				
Tool Model:	O				
Performed:	Mon Dec 12 10:01:33 2005				
Calibrator Value:	170.0		GAPI		
Background Reading:	42.6		cps		
Calibrator Reading:	139.0		cps		
Sensitivity:	1.0000		GAPI/cps		

Sensor	Offset (ft)	Schematic	Description	Len (ft)	OD (in)	Wt (lb)
GR	7.64		GR-O (2119) Oilex	2.60	3.63	74.00
LSD	2.13		CDL-O (2119) Oilex	5.77	4.00	201.00
DCAL	1.79					
SSD	1.58					
Dataset:			/field/well/run1/_plots/_jobs_/cdl			
Total Length:			8.37 ft			
Total Weight:			275.00 lb			
O.D.			4.00 in			