

**Patterson**

**DUAL  
INDUCTION  
LOG**

Company XTO Energy Inc.		Company XTO Energy Inc.	
Well Golden Eagle 31-08		Well Golden Eagle 31-08	
Field Purgatoire River		Field Purgatoire River	
County Las Animas		County Las Animas	
State Colorado		State Colorado	
Location: API # : 05 071 08674 00		Other Services	
1911' FNL & 1297' FEL		dill	
SEC 31 TWP 33S RGE 67W		Elevation	
Permanent Datum	Ground Level	Elevation	7404'
Log Measured From	Ground Level	K.B. -----	
Drilling Measured From	Ground Level	D.F. -----	
		G.L. 7404'	
Date	02-24-06		
Run Number	Two		
Depth Driller	2150'		
Depth Logger	2145'		
Bottom Logged Interval	2143'		
Top Log Interval	Surface Casing		
Casing Driller	8 5/8" @ 226'		
Casing Logger	226'		
Bit Size	7 7/8"		
Type Fluid in Hole	Water		
Density / Viscosity	///		
pH / Fluid Loss	///		
Source of Sample	///		
Rm @ Meas. Temp	///		
Rmf @ Meas. Temp	///		
Rmc @ Meas. Temp	///		
Source of Rmf / Rmc	///		
Rm @ BHT	///		
Time Circulation Stopped	9:00 p.m.		
Time Logger on Bottom	12:25 a.m.		
Maximum Recorded Temperature	122		
Equipment Number	T677		
Location	Trinidad		
Recorded By	L. Smith		
Witnessed By	Mr. Don Johnson		
	Mr. Dalton King		

>>> Fold Here >>>

All interpretations are opinions based on inferences from electrical or other measurements and we cannot and do not guarantee the accuracy or correctness of any interpretation, and we shall not, except in the case of gross or willful negligence on our part, be liable or responsible for any loss, costs, damages, or expenses incurred or sustained by anyone resulting from any interpretation made by any of our officers, agents or employees. These interpretations are also subject to our general terms and conditions set out in our current Price Schedule.

**Comments**

Second entrance to Bosque, at Y stay left to Ciruela Canyon,  
go thru gate, stay on main rd to windmill, go left, first location on right.

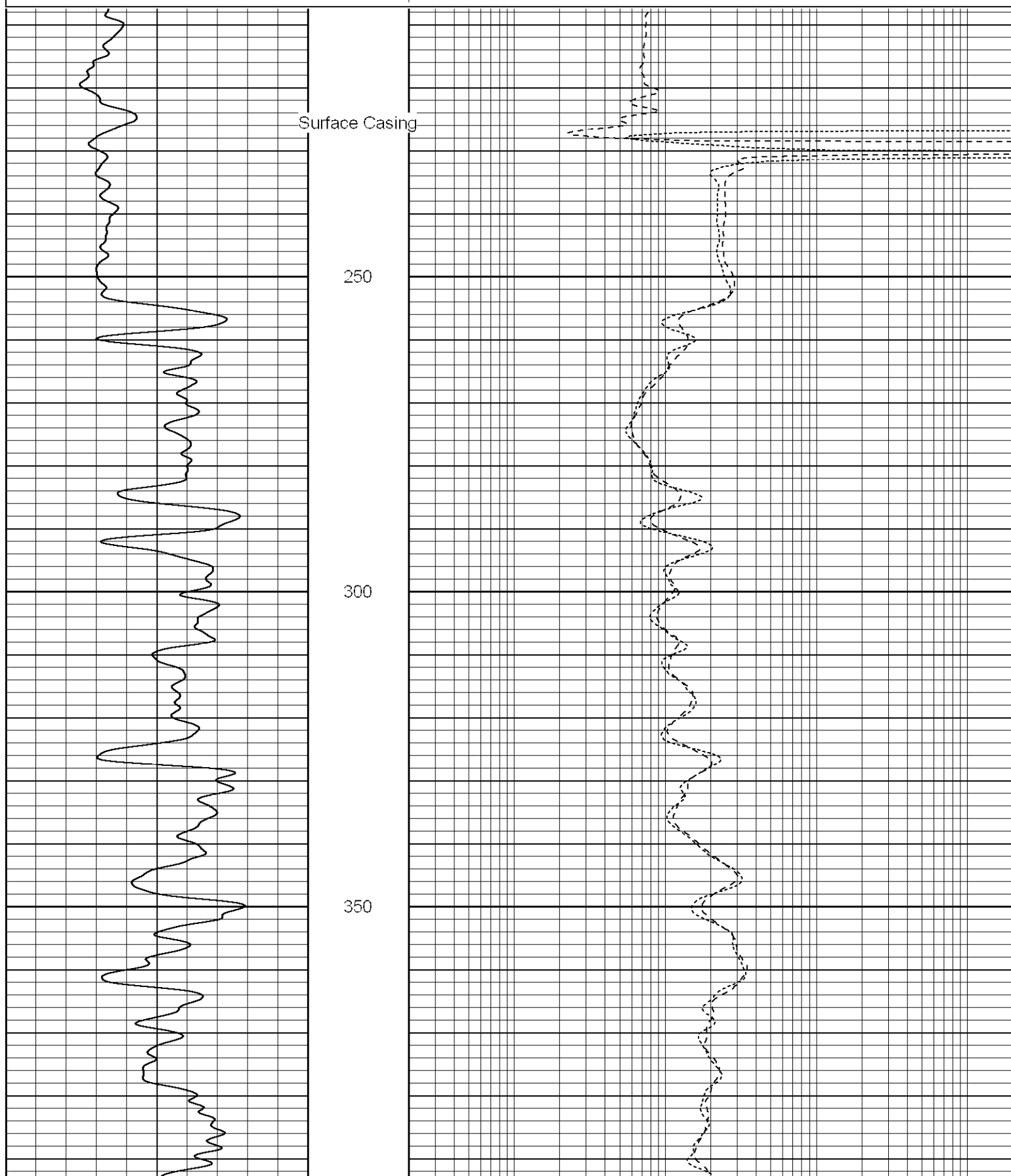
**Patterson**

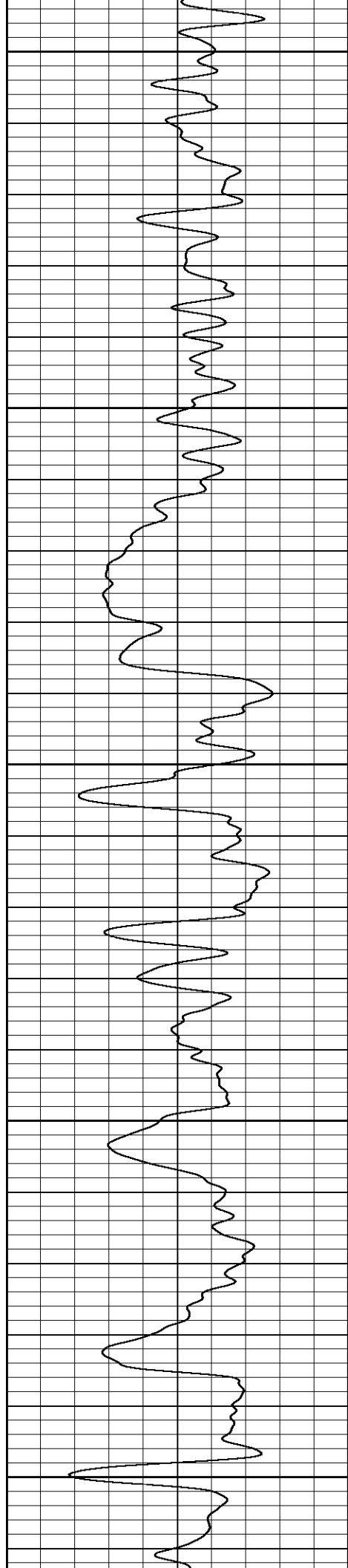
**Main Pass**

Database File: xtoge3108.db  
Dataset Pathname: pass3.1  
Presentation Format: dil  
Dataset Creation: Fri Feb 24 03:21:41 2006 by Calc Warrior 7.0 STD Ope  
Charted by: Depth in Feet scaled 1:240

0	GR (GAPI)	200
-200	SP (mV)	0

0.2	RILD (Ohm-m)	2000
0.2	RILM (Ohm-m)	2000
0.2	RLL3 (Ohm-m)	2000





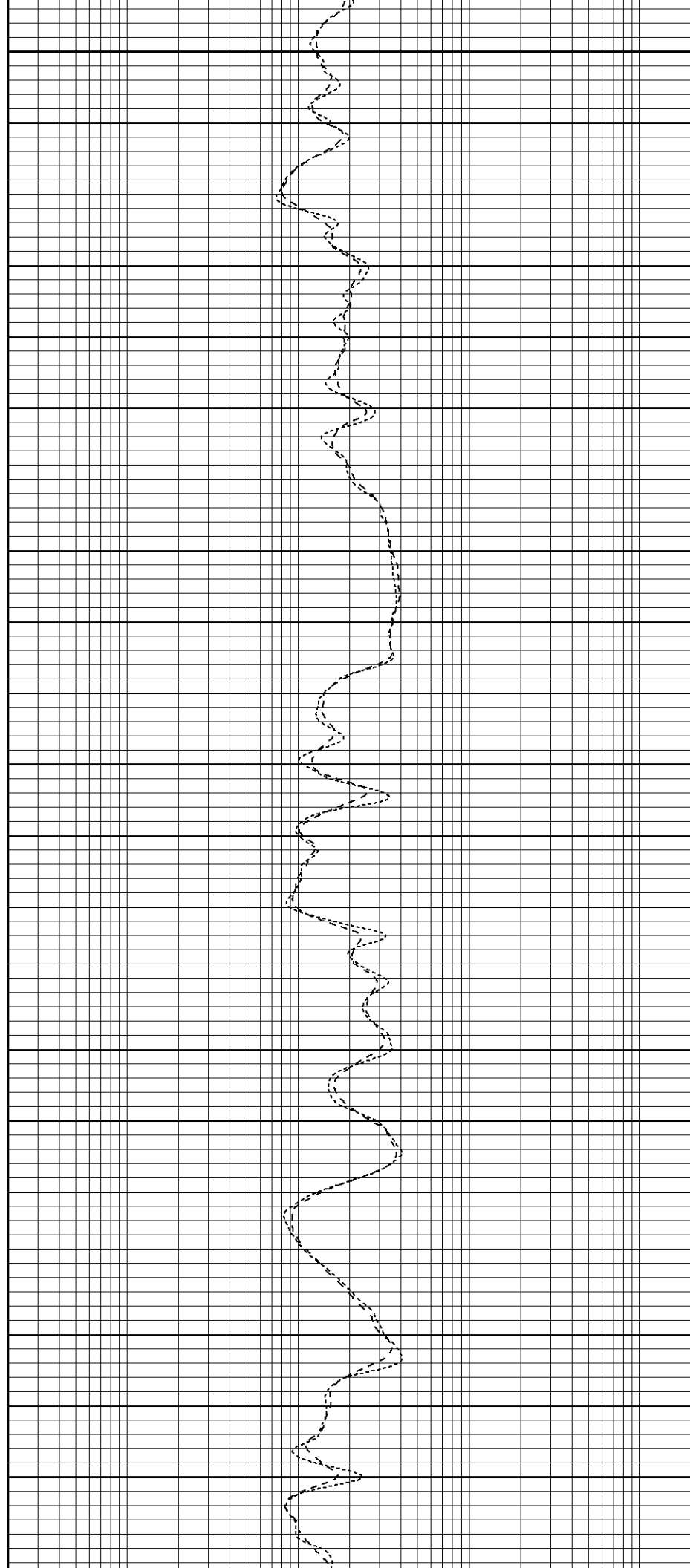
400

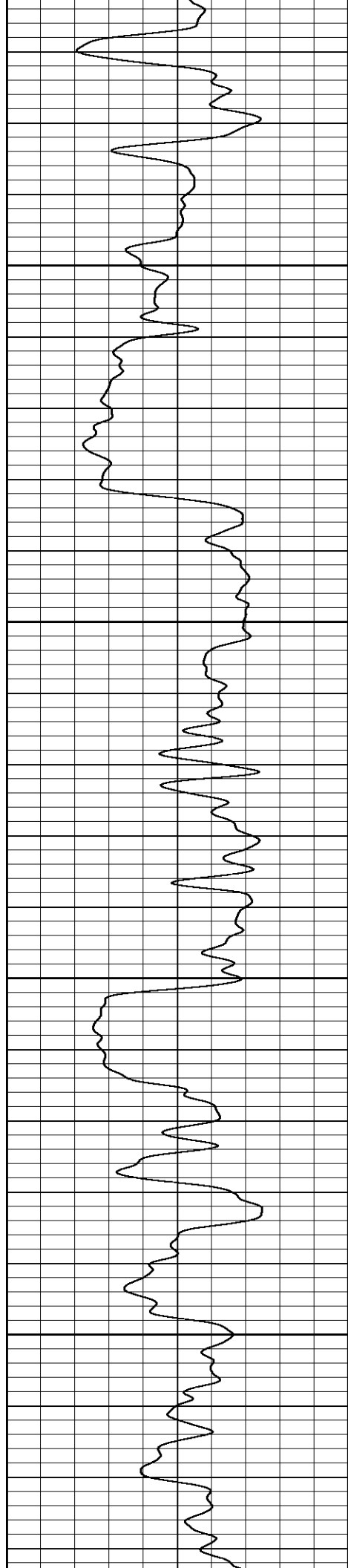
450

500

550

600



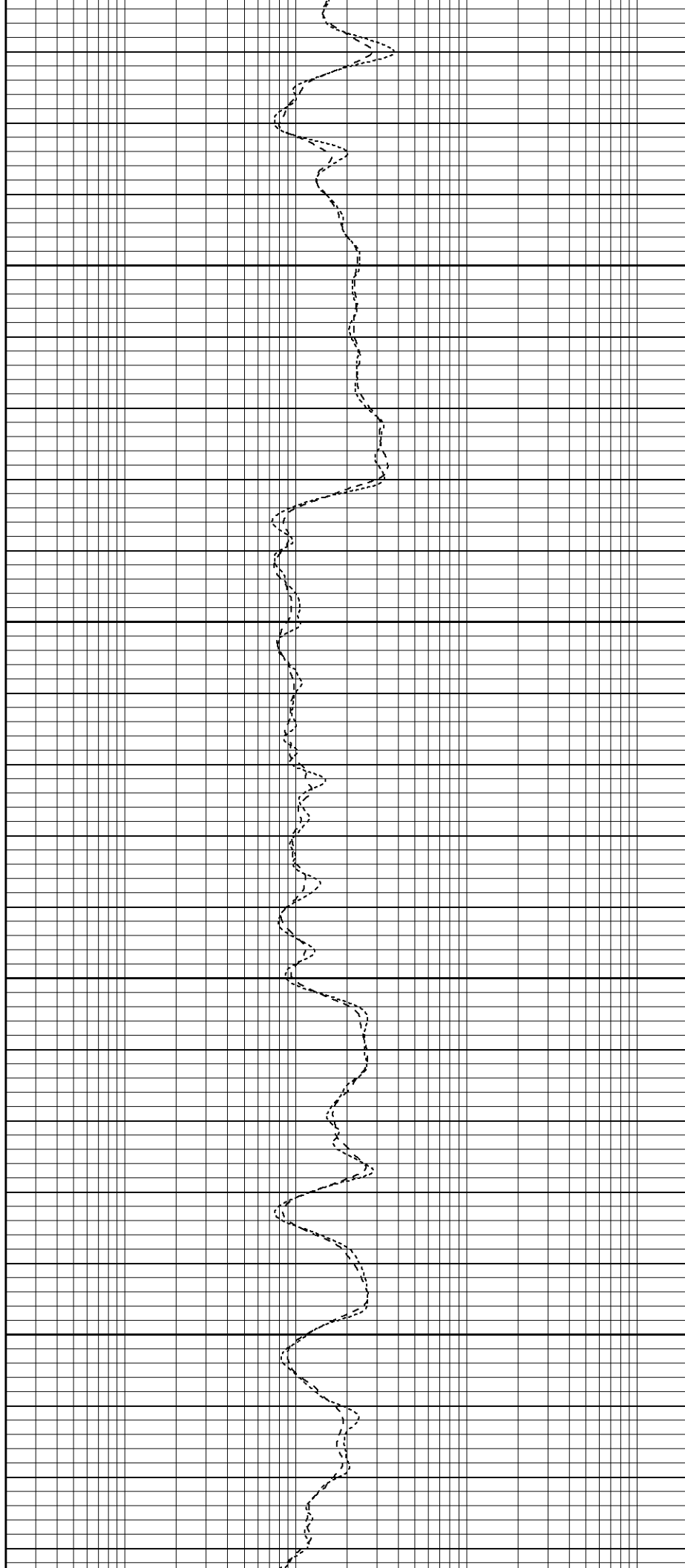


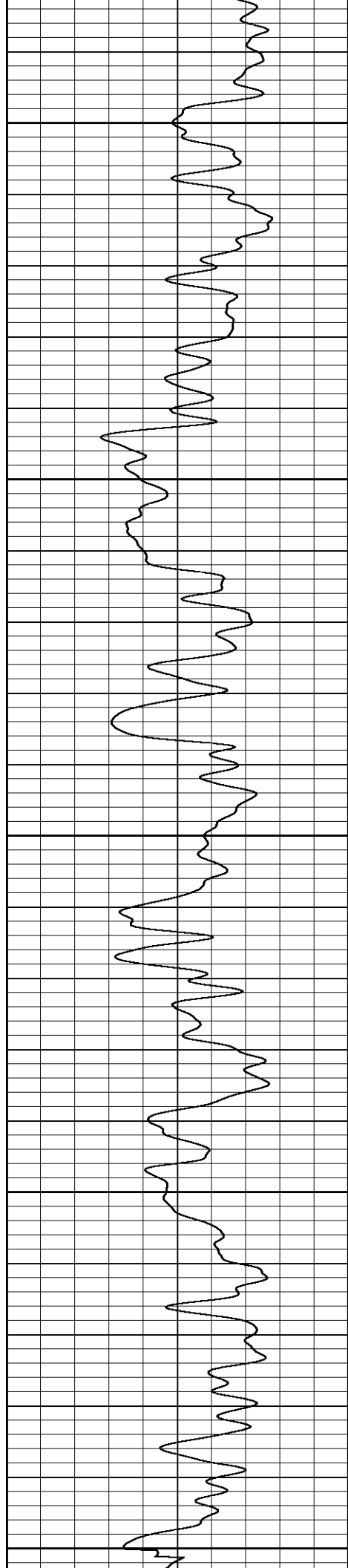
650

700

750

800





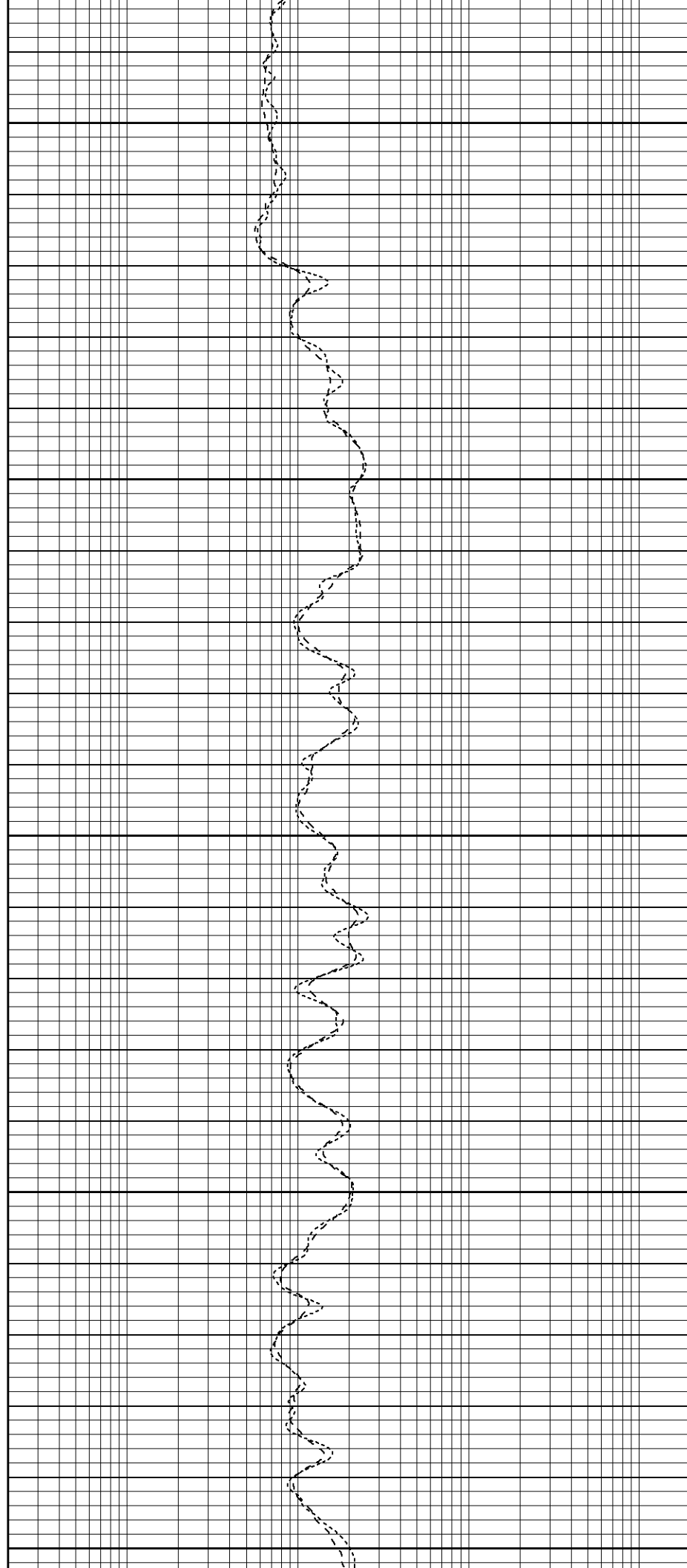
850

900

950

1000

1050



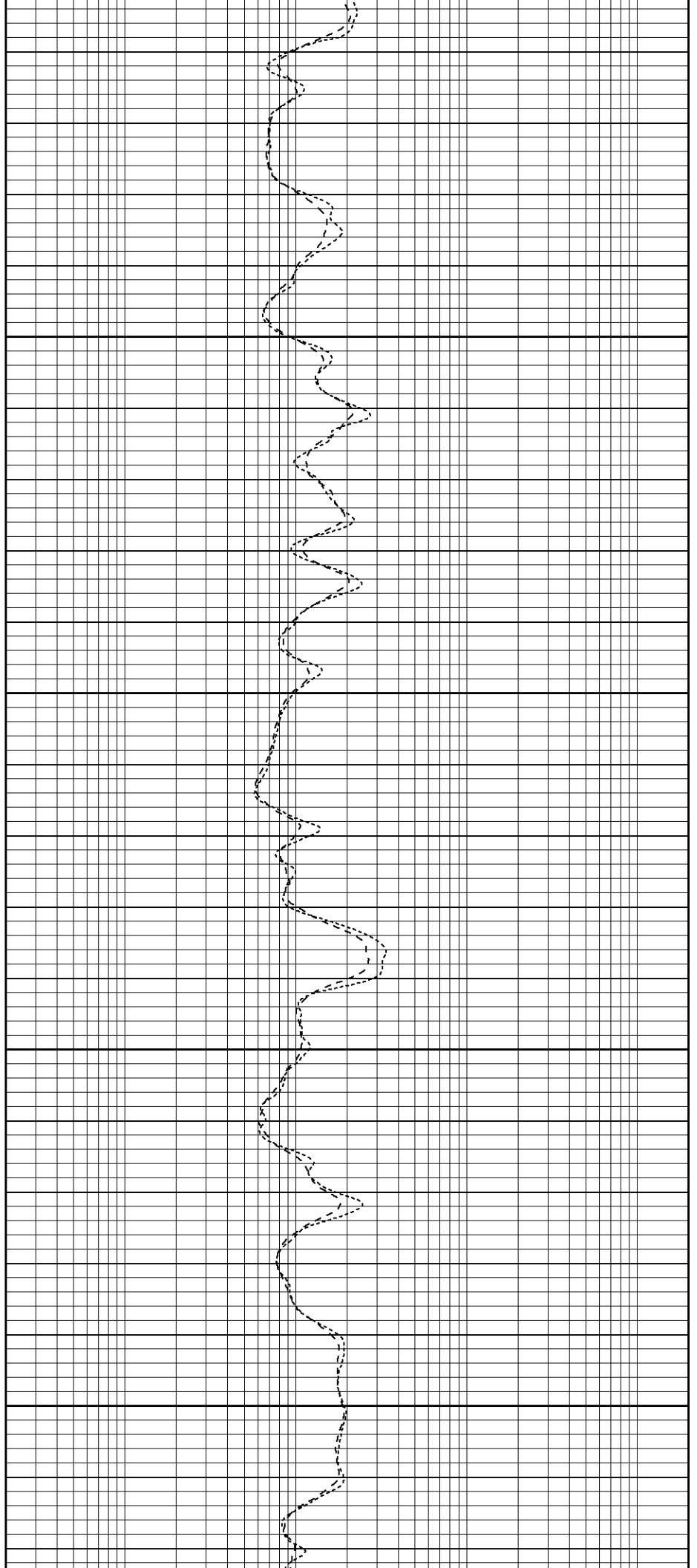
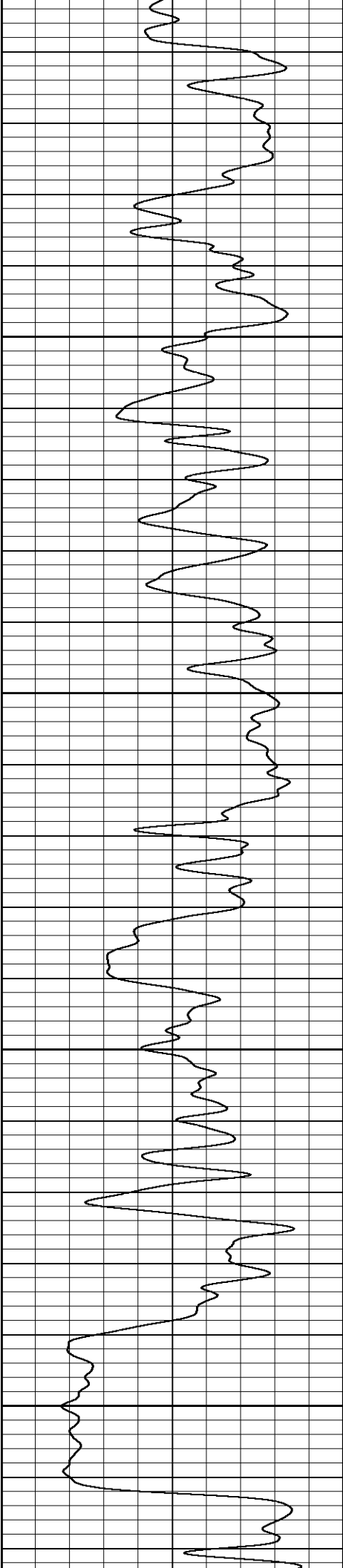
Air

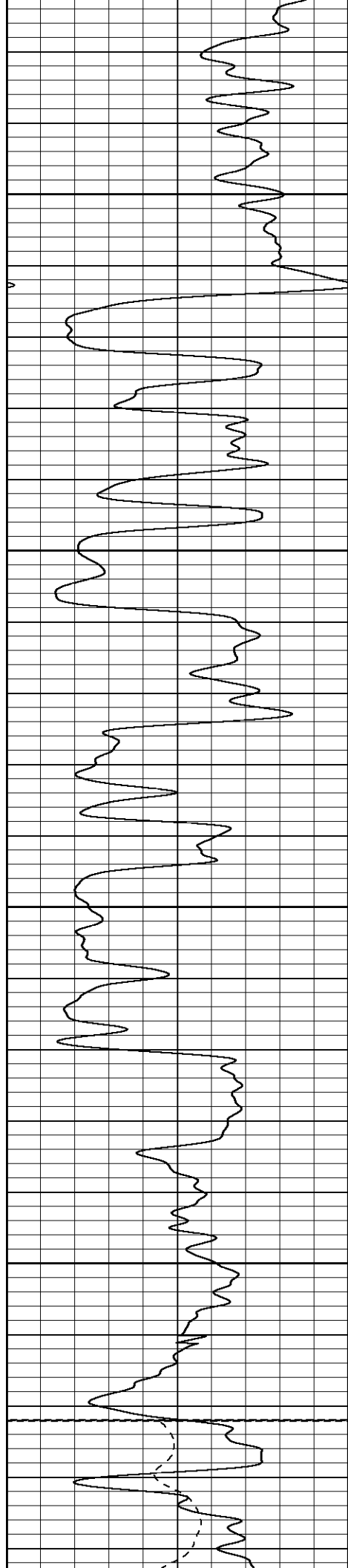
1100

1150

1200

1250





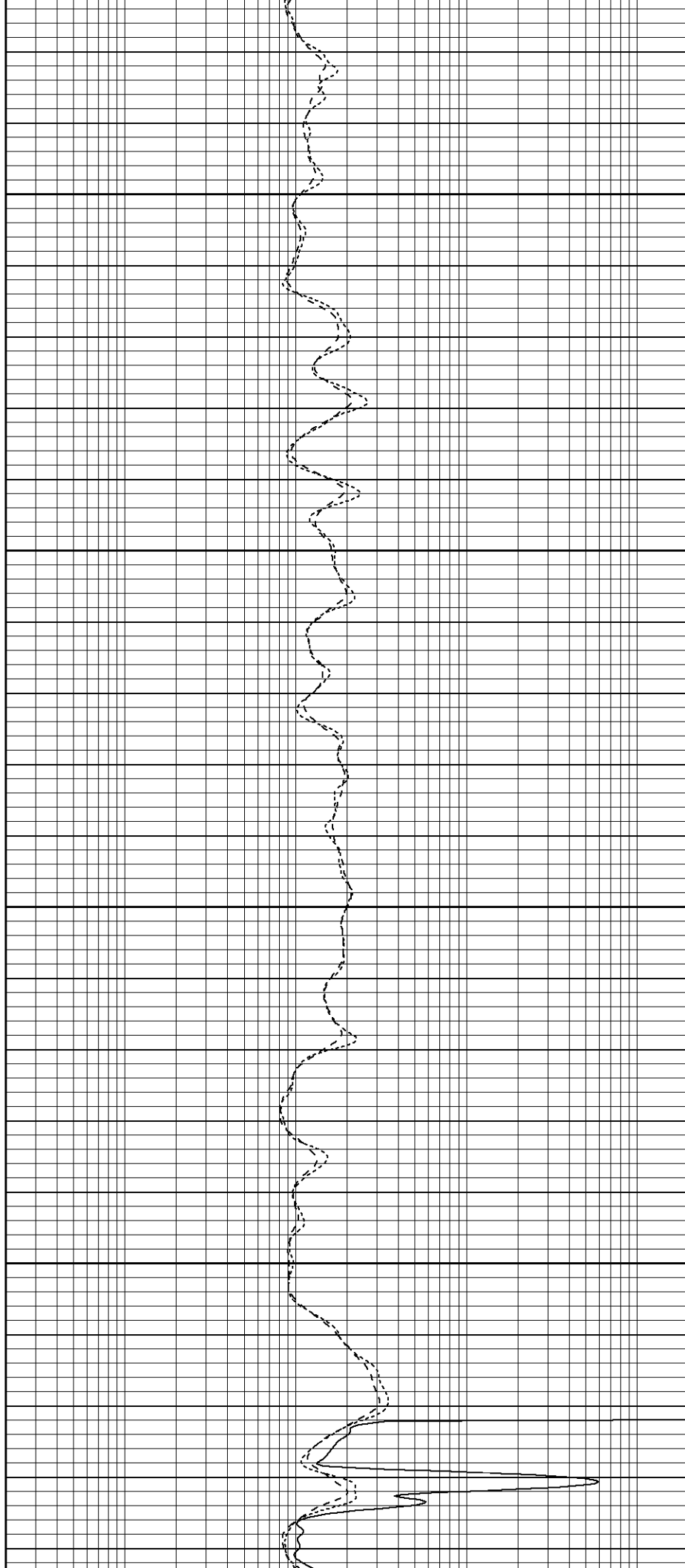
1300

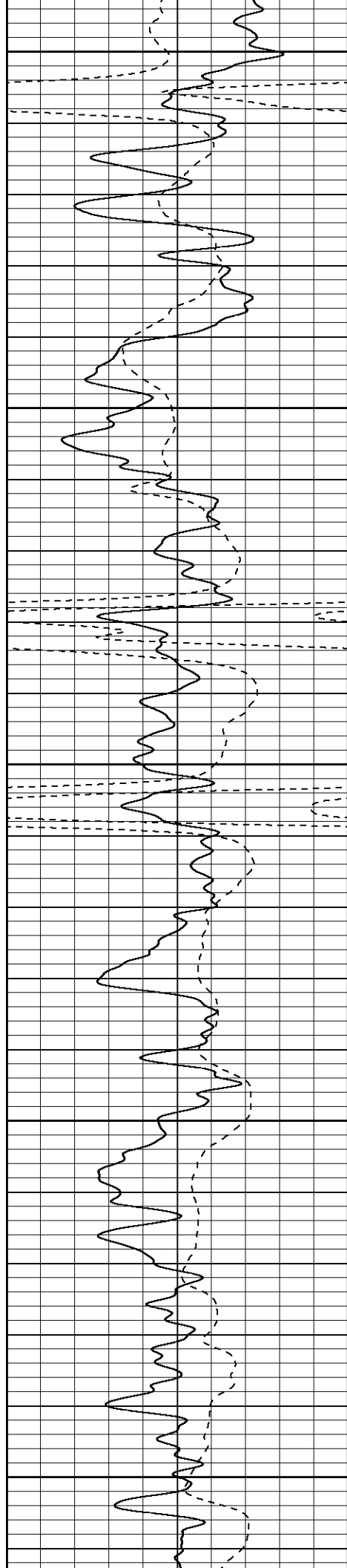
1350

1400

1450

Foam





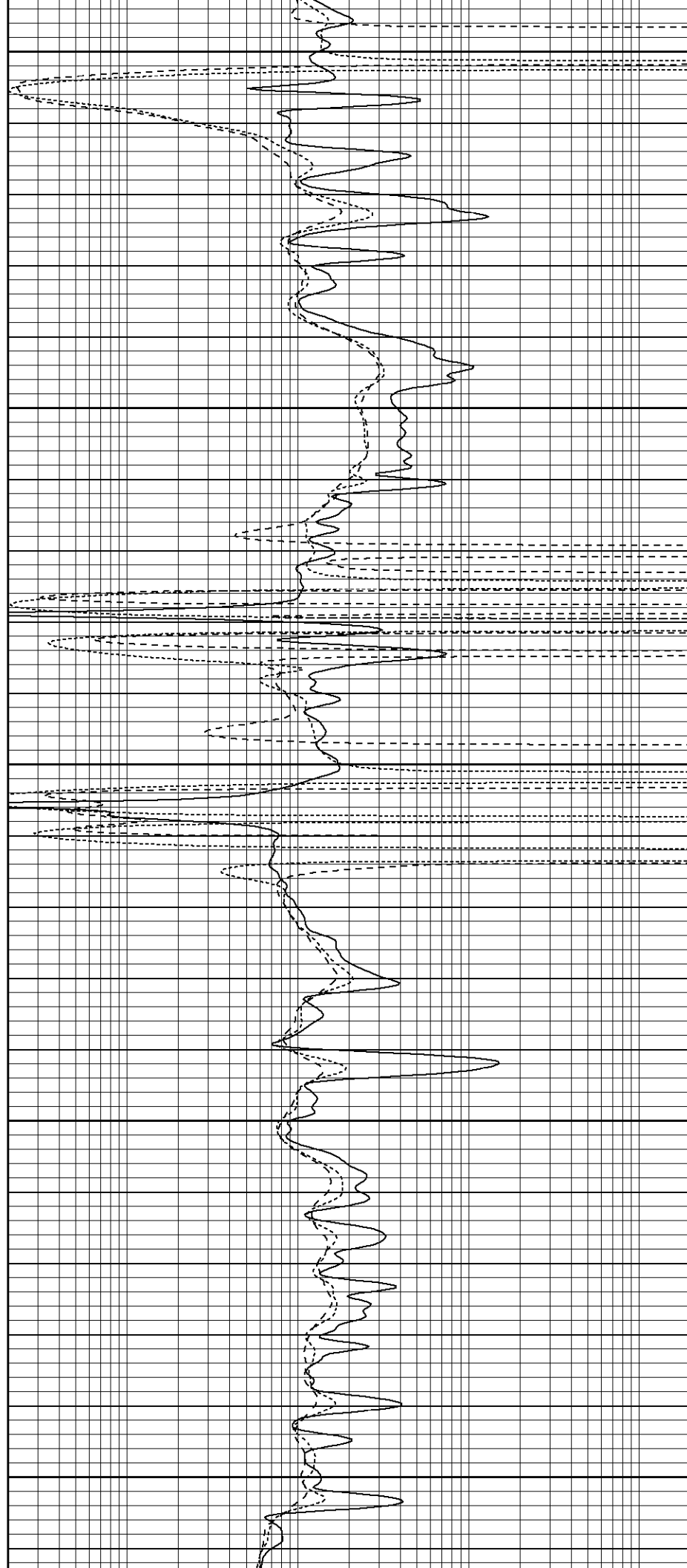
1500

1550

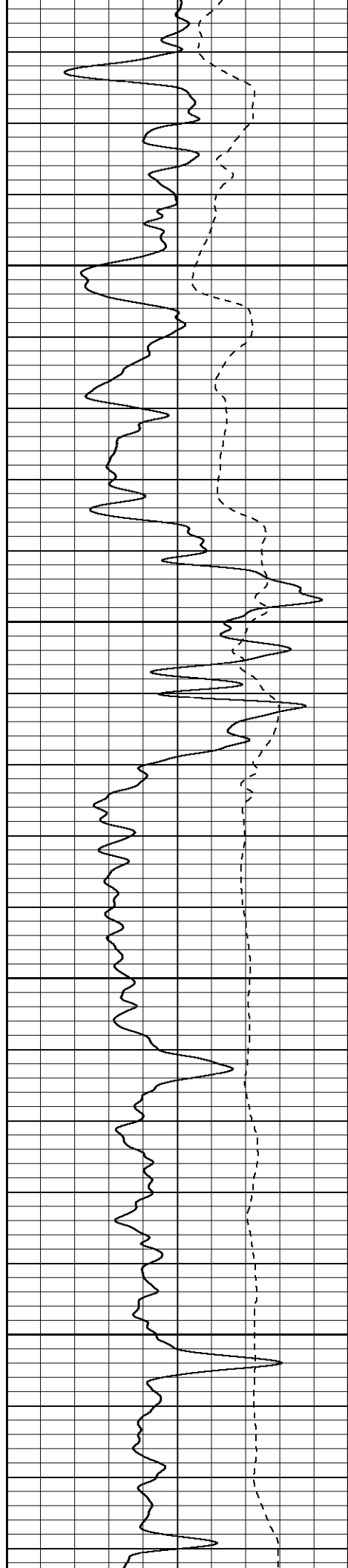
1600

1650

1700





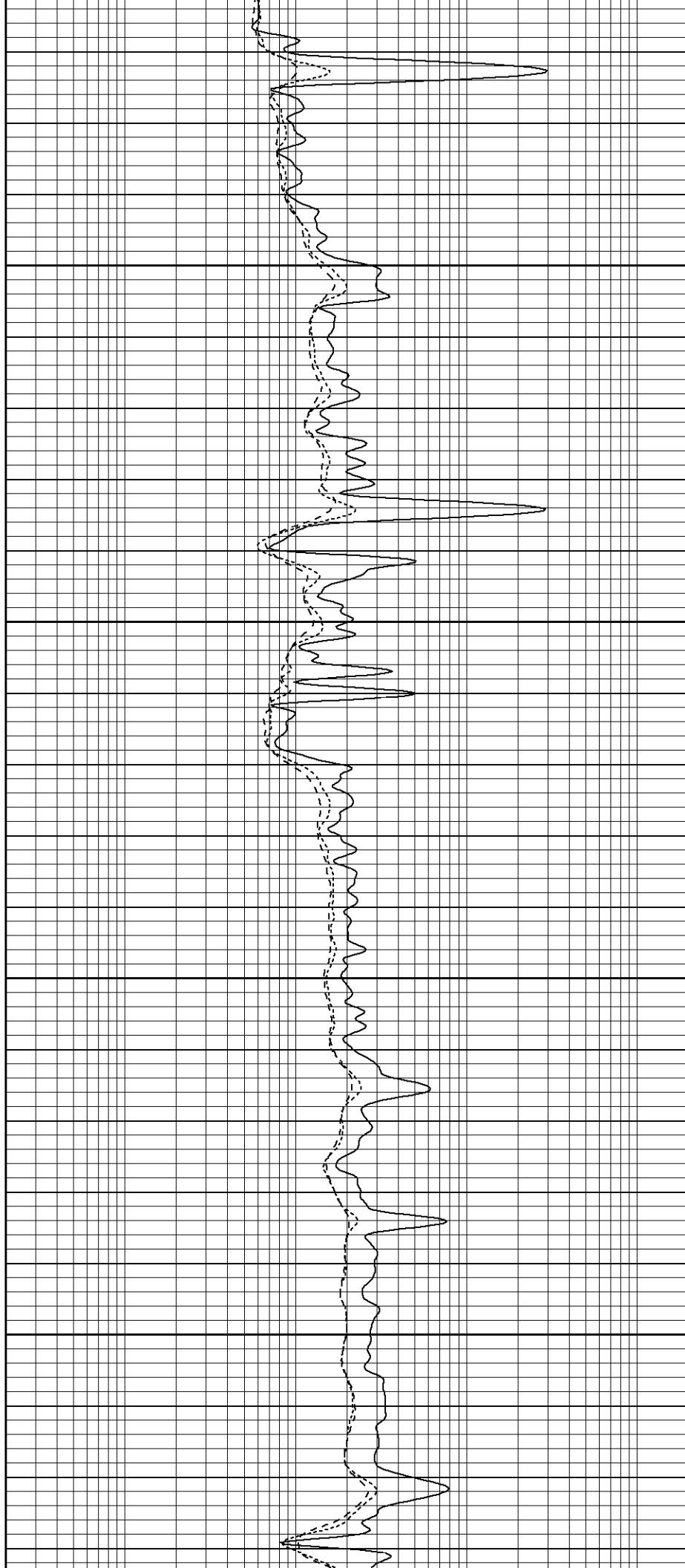


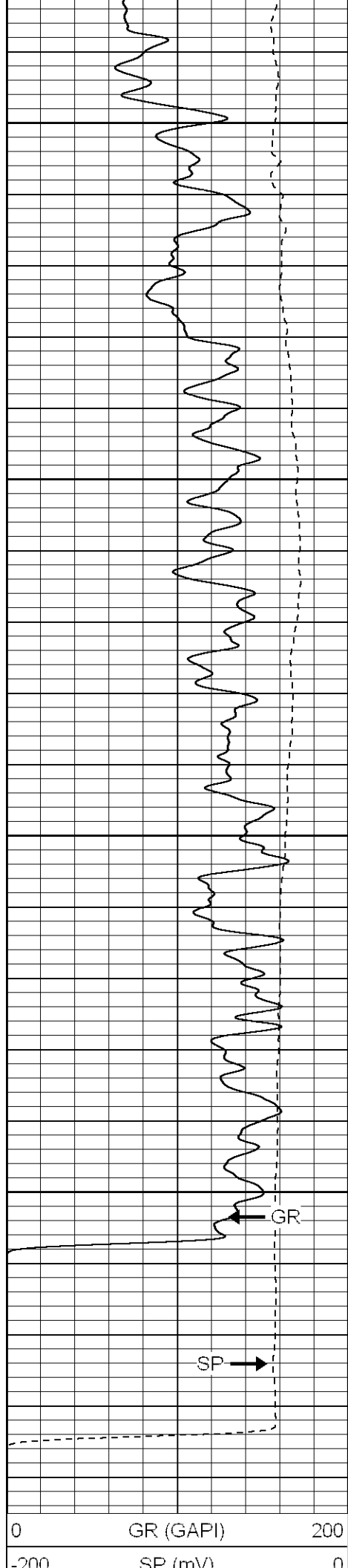
1750

1800

1850

1900





1950

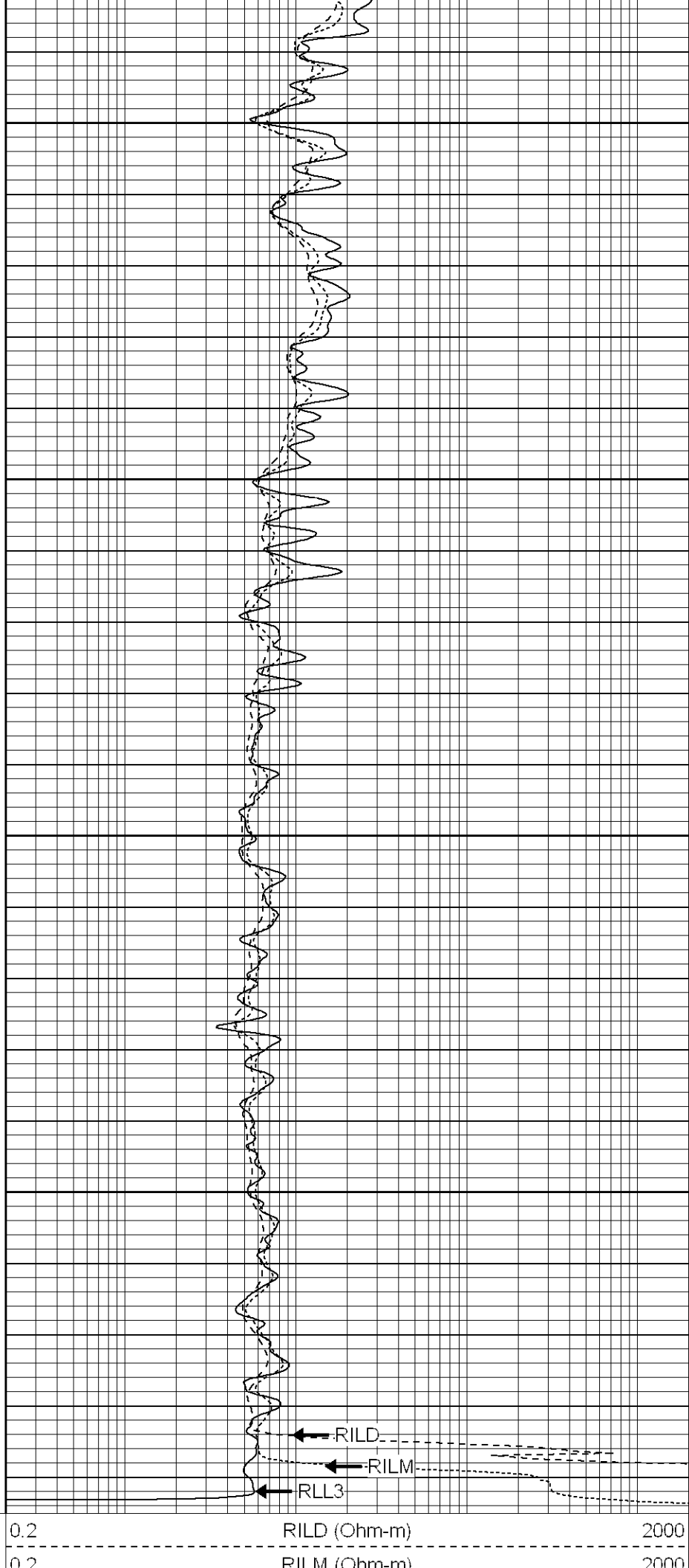
2000

2050

2100

GR

SP



RILD

RILM

RLL3

200	SP (mV)	0	0.2	RILM (Ohm-m)	2000
			0.2	RLL3 (Ohm-m)	2000

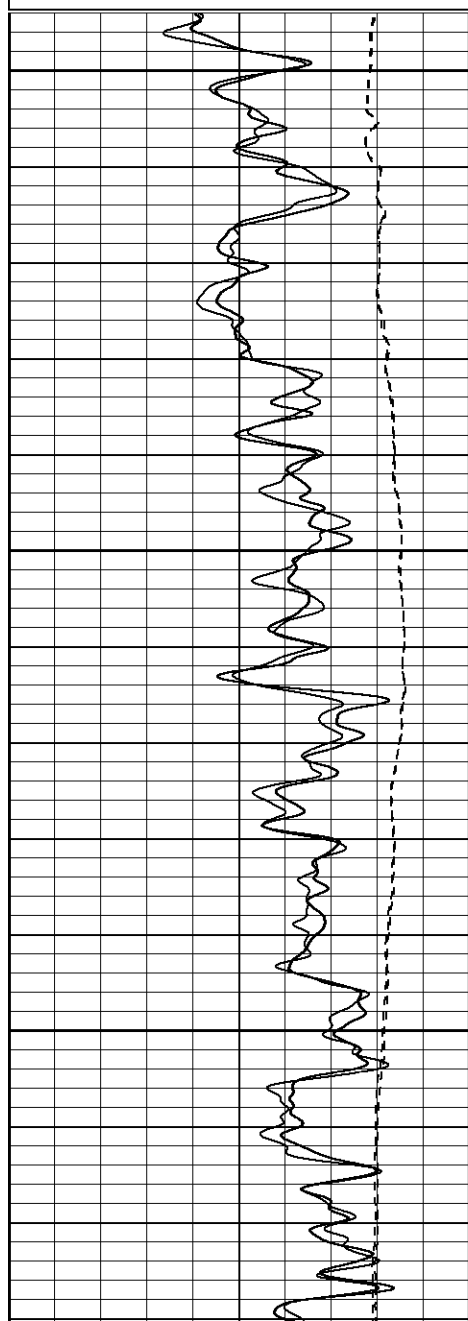
**Patterson**

# Repeat Pass

Database File: xtoge3108.db  
Dataset Pathname: pass1.1  
Presentation Format: dil  
Dataset Creation: Fri Feb 24 01:18:13 2006 by Calc Warrior 7.0 STD Ope  
Charted by: Depth in Feet scaled 1:240

0	GR (GAPI)	200
-200	SP (mV)	0
0	GR-repeat (GAPI)	200
-200	SP-repeat (mV)	0

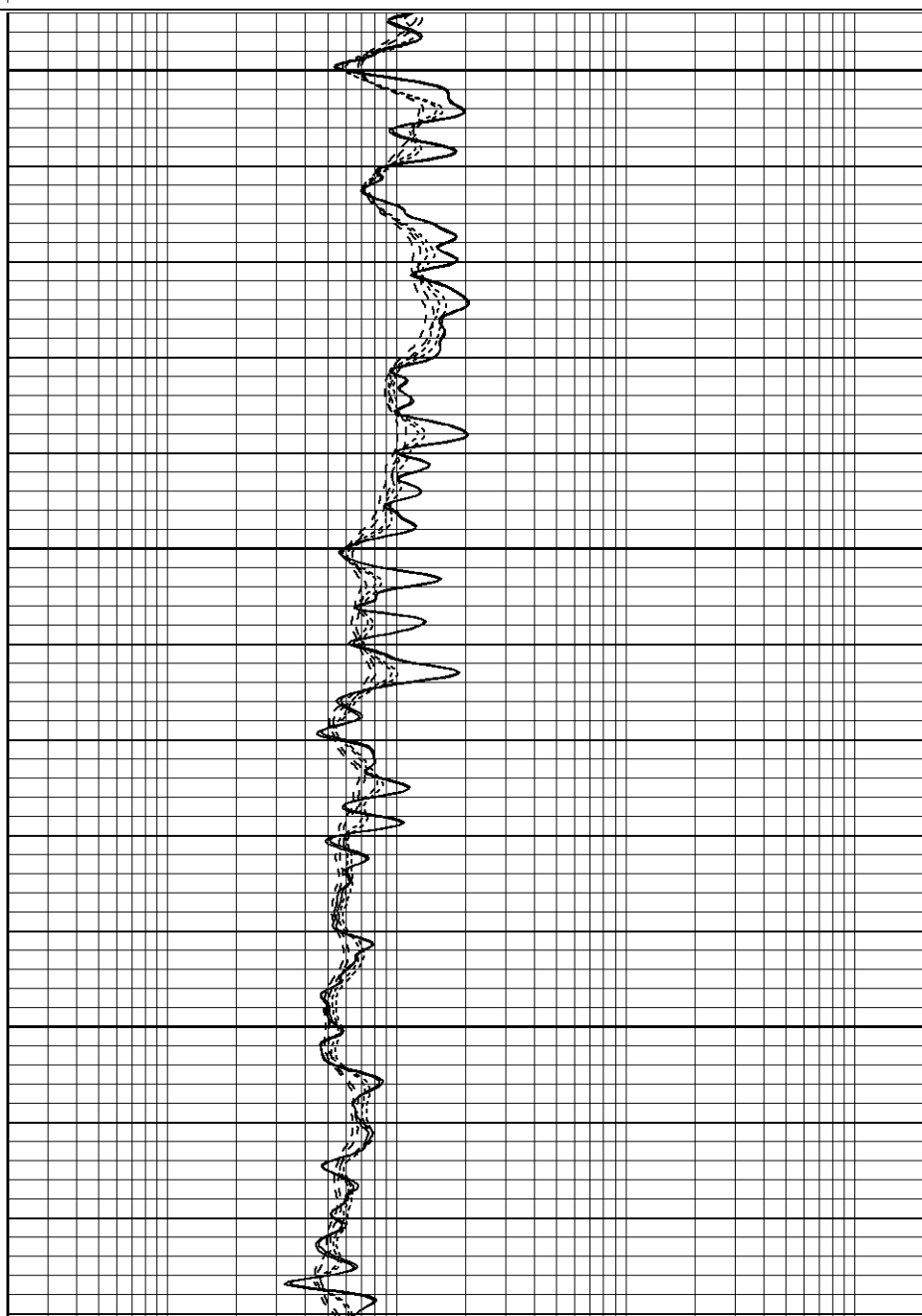
0.2	RILD (Ohm-m)	2000
0.2	RILM (Ohm-m)	2000
0.2	RLL3 (Ohm-m)	2000
0.2	RLL3-repeat (Ohm-m)	2000
0.2	RILM-repeat (Ohm-m)	2000
0.2	RILD-repeat (Ohm-m)	2000

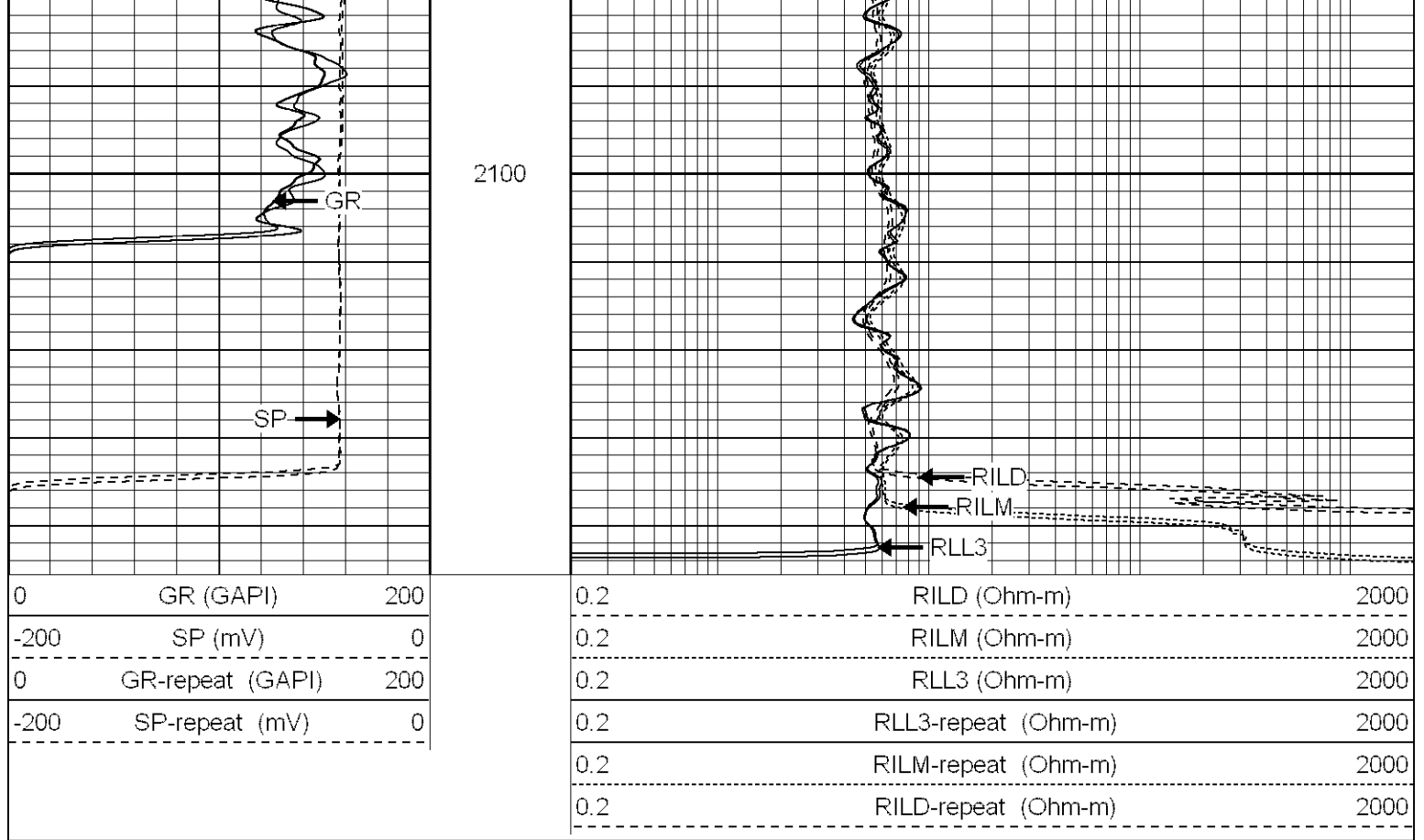


1950

2000

2050





### Dual Induction Calibration Report

Serial-Model: 5375-G  
 Surface Cal Performed: Mon Feb 13 14:55:47 2006  
 Downhole Cal Performed: Tue Feb 14 01:05:06 2006

### Compensated Density Calibration Report

Serial-Model: 902-2.75POH  
 Source / Verifier: /  
 Master Calibration Performed: Thu Feb 02 11:11:37 2006

#### Master Calibration

	Density		Far Detector	Near Detector	
Magnesium	1.710	g/cc	937.77	456.05	cps
Aluminum	2.590	g/cc	165.72	224.56	cps
Spine Angle = 67.77			Density/Spine Ratio = 0.470		
	Size		Reading		
Small Ring	8.65	in	2.31	V	
Large Ring	17.00	in	4.47	V	

### Neutron Calibration Report

Serial Number: 802  
 Tool Model: 2.75POH  
 Performed: Thu Feb 16 09:30:49 2006

Calibrator Value: 1 NAPI

Calibrator Reading: 1 cps

Sensitivity:

1

NAPI/cps

## Gamma Ray Calibration Report

Serial Number: 804  
 Tool Model: 2.75POH  
 Performed: Thu Feb 09 14:37:22 2006

Calibrator Value: 1.0 GAPI

Background Reading: 0.0 cps  
 Calibrator Reading: 1.0 cps

Sensitivity: 0.8100 GAPI/cps

Sensor	Offset (ft)	Schematic	Description	Len (ft)	OD (in)	Wt (lb)
CHD	39.37		None	0.75	1.50	5.00
GR	37.64		GR-2.75POH (804) Probe	3.73	2.75	43.00
NEU	32.10		NEU-2.75POH (802) Probe Epithermal	4.75	2.75	58.00
LSD	24.47		CDL-2.75POH (902) Probe	8.43	2.75	106.00
DCAL	24.19		Probe	0.89	3.50	20.00
SSD	23.95					
10pin	21.72					
CILD	10.60		DIL-G (5375) Gearhart	20.83	4.00	345.00
SP	10.60					
CILM	6.89					
RLL3	1.70					

Dataset:	/field/well/run/_plots_/_jobs_/i
Total Length:	39.37 ft
Total Weight:	577.00 lb
O.D.	4.00 in