

Patterson

**SINGLE
INDUCTION
LOG**

Company	Pioneer Natural Resources	Company	Pioneer Natural Resources
Well	Flo 23-5	Well	Flo 23-5
Field	Purgatoire River	Field	Purgatoire River
County	Las Animas	County	Las Animas
State	Colorado	State	Colorado
Location:	API # : 05 071 08528 00	Other Services	CDL NEUTRON
Permanent Datum	SEC 5 TWP 32S RGE 66W	Elevation	
Log Measured From	Ground Level	Elevation	7477'
Drilling Measured From	Kelly Bushing 4' Above G.L.	K.B. 7481'	
	Kelly Bushing	D.F. -----	
		G.L. 7477'	
Date	9-22-05		
Run Number	One		
Depth Driller	2595'		
Depth Logger	2582'		
Bottom Logged Interval	2580'		
Top Log Interval	Surface Casing		
Casing Driller	8 5/8" @ 369'		
Casing Logger	368'		
Bit Size	7 7/8"		
Type Fluid in Hole	Water		
Density / Viscosity	///		
pH / Fluid Loss	///		
Source of Sample	///		
Rm @ Meas. Temp	///		
Rmf @ Meas. Temp	///		
Rmc @ Meas. Temp	///		
Source of Rmf / Rmc	///		
Rm @ BHT	///		
Time Circulation Stopped	5:30 P.M.		
Time Logger on Bottom	7:45 P.M.		
Maximum Recorded Temperature	N/R		
Equipment Number	T720		
Location	Trinidad		
Recorded By	M. Norton		
Witnessed By	Mr. Neal Hawthorne		

<<< Fold Here >>>

All interpretations are opinions based on inferences from electrical or other measurements and we cannot and do not guarantee the accuracy or correctness of any interpretation, and we shall not, except in the case of gross or willful negligence on our part, be liable or responsible for any loss, costs, damages, or expenses incurred or sustained by anyone resulting from any interpretation made by any of our officers, agents or employees. These interpretations are also subject to our general terms and conditions set out in our current Price Schedule.

Comments

Well Directions:
Aguilar West To Gulnare, Turn Left At Jarosa Gravel Pit,
Stay On Main Road, Right At Four-Way, Right Towards Vertigo,
First Right Towards Medicine Man, First Right To Location.

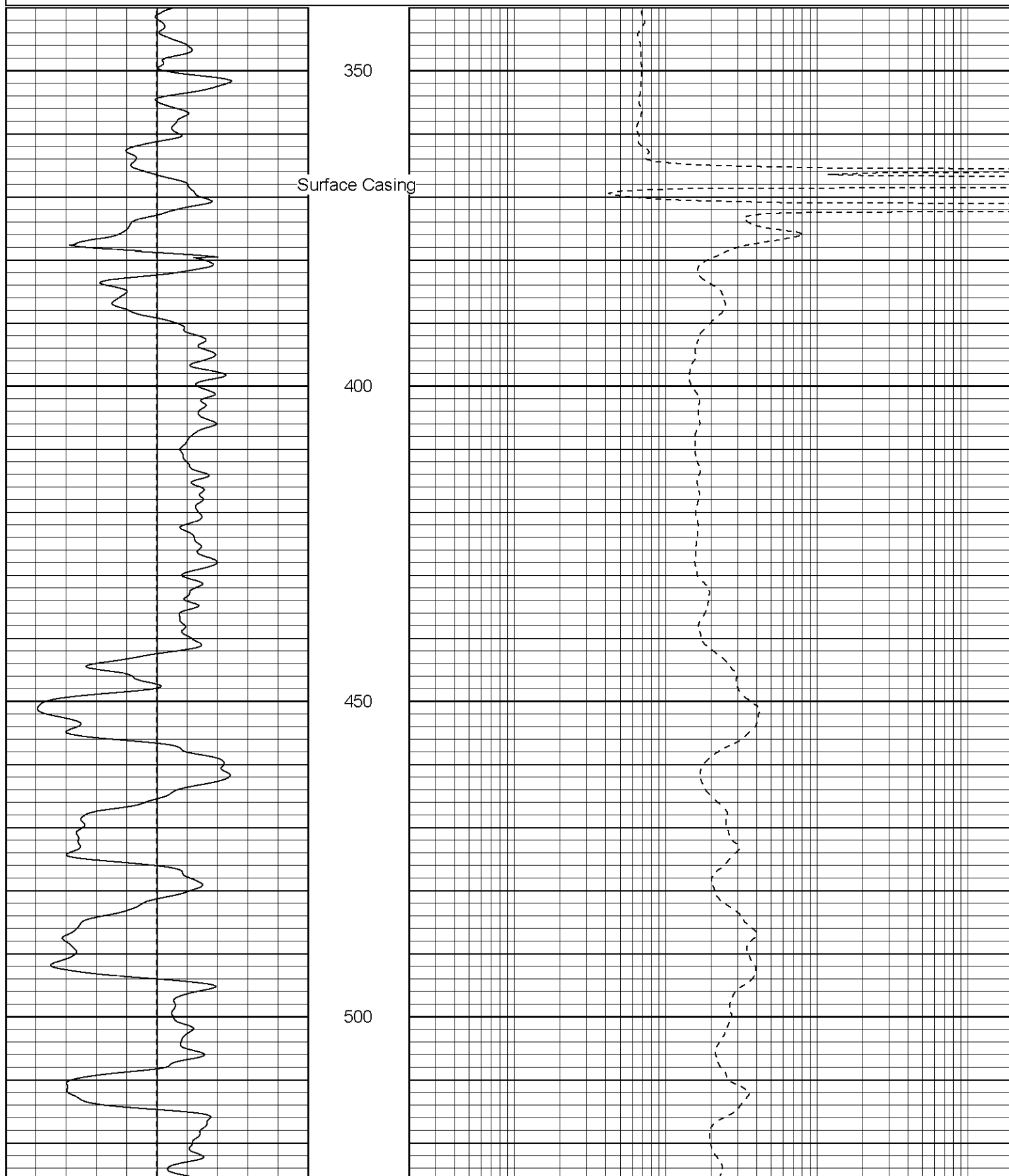
Patterson

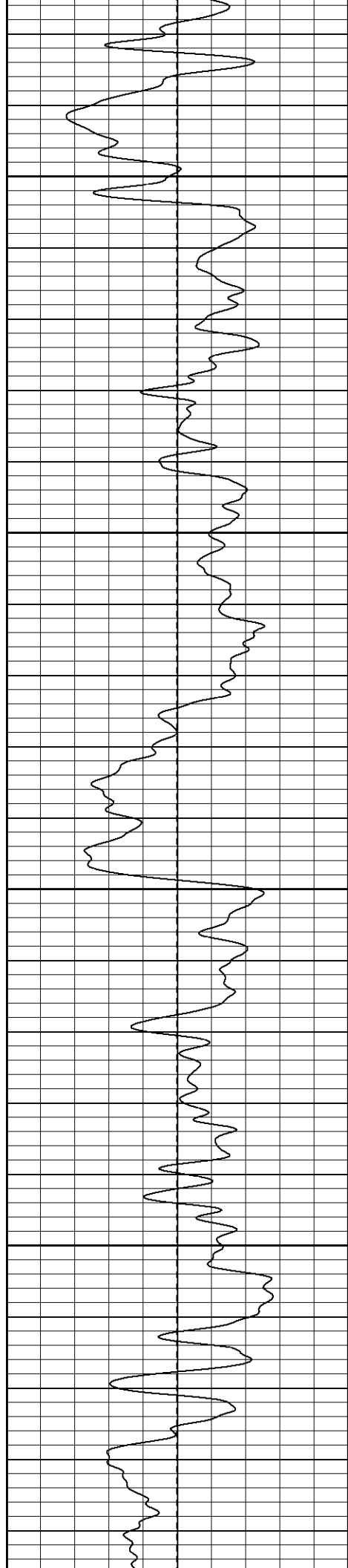
Main Pass

Database File: flo.db
Dataset Pathname: pass2.1
Presentation Format: iel
Dataset Creation: Thu Sep 22 22:10:20 2005 by Calc Warrior 7.0 STD Ope
Charted by: Depth in Feet scaled 1:240

0	GR (GAPI)	200
-100	SP (mV)	100

0.2	DIR (Ohm-m)	2000
0.2	SN (Ohm-m)	2000



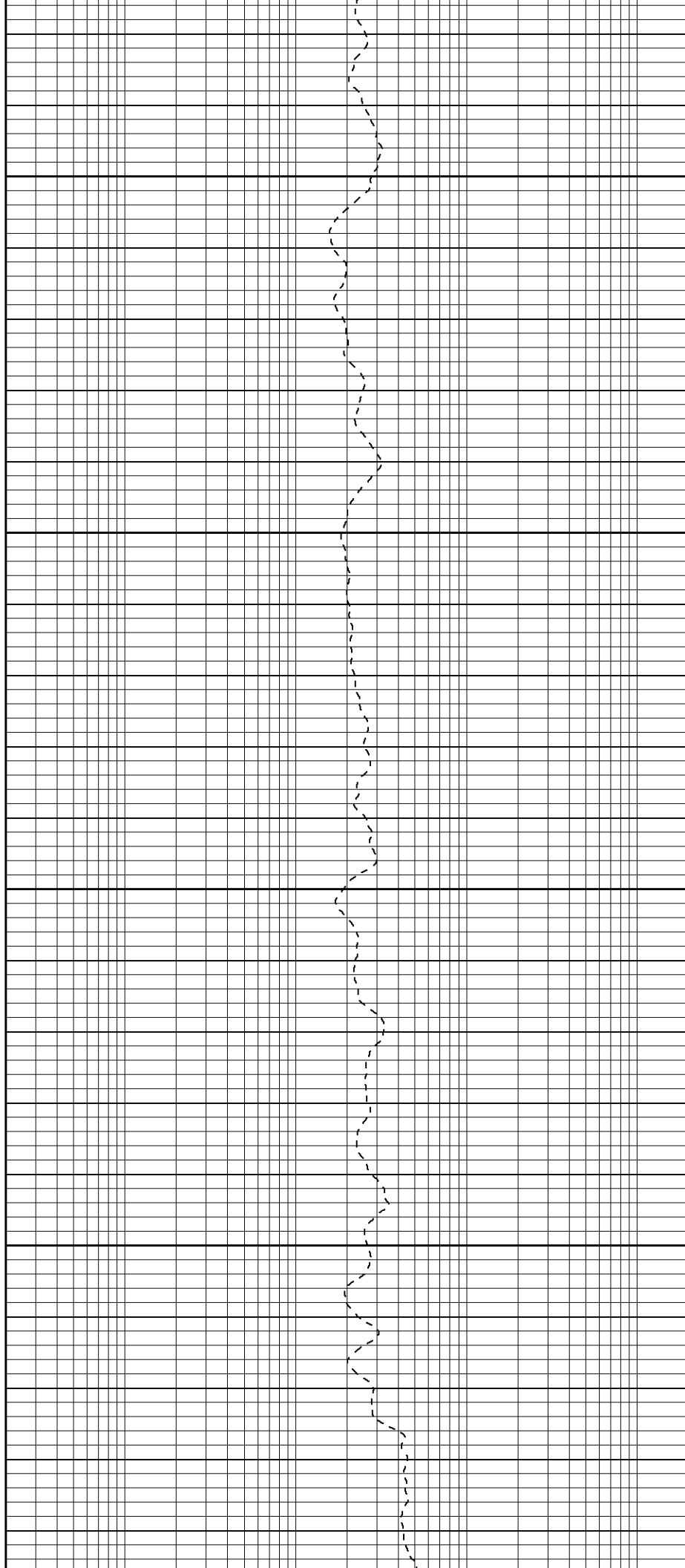


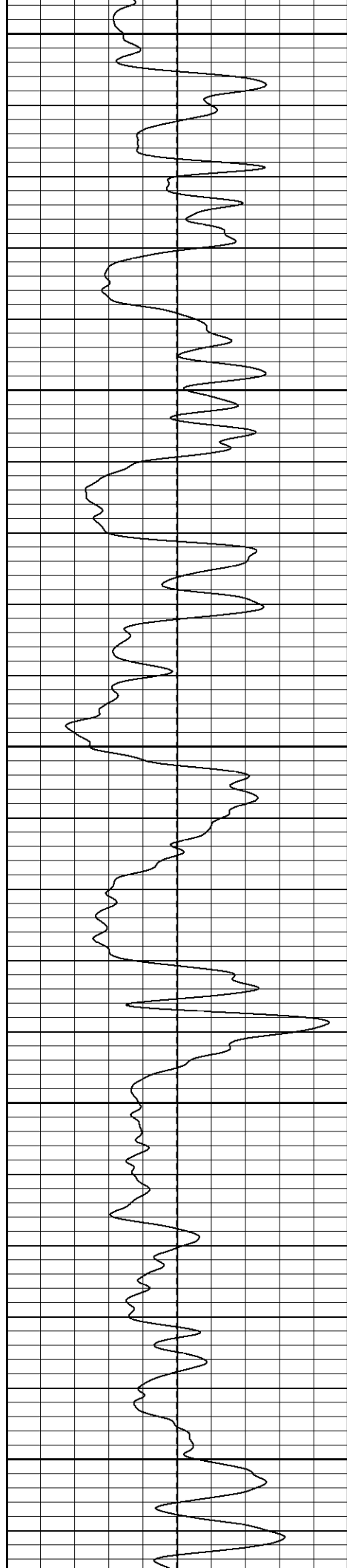
550

600

650

700





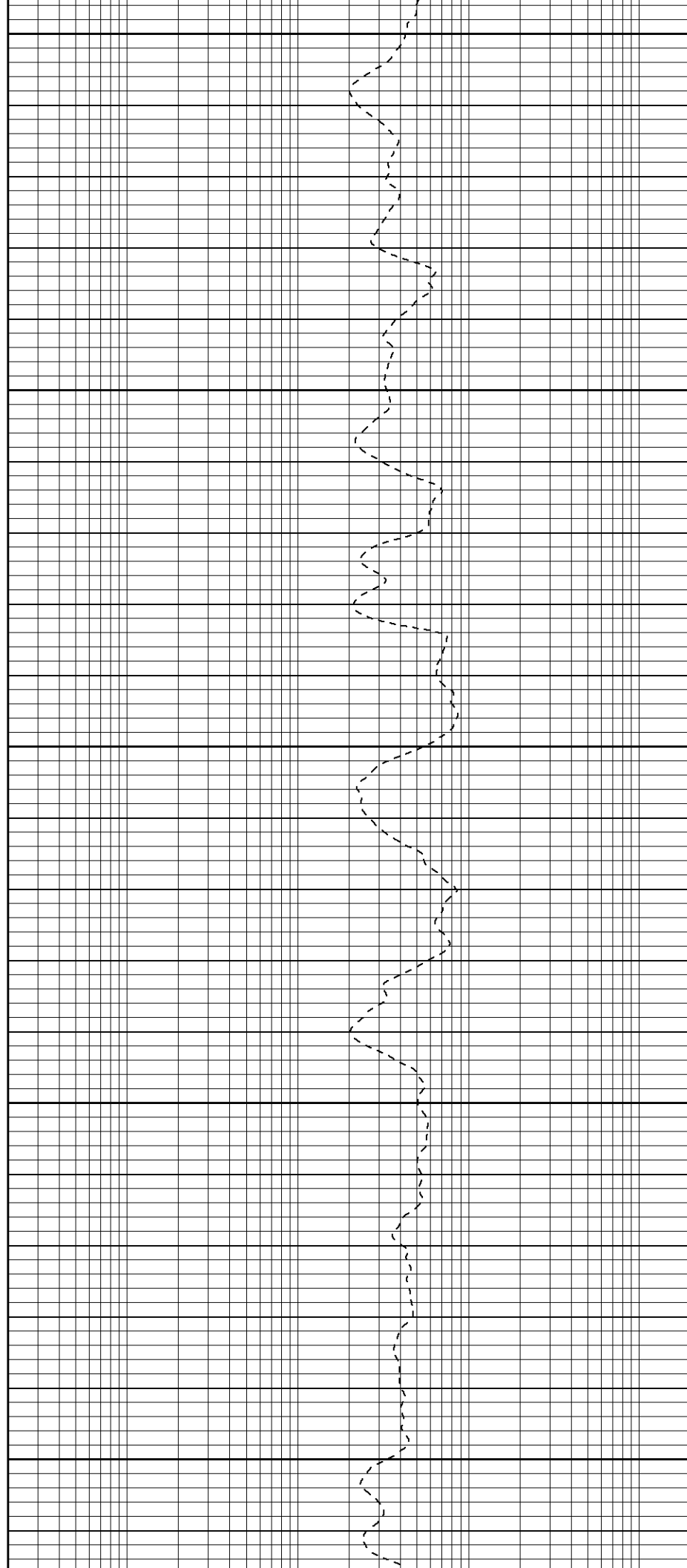
750

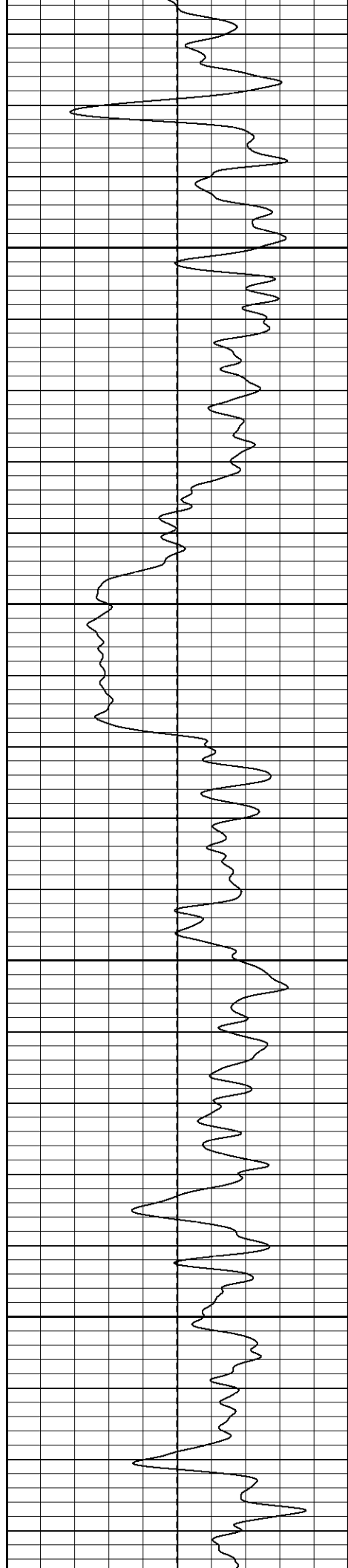
800

850

900

950



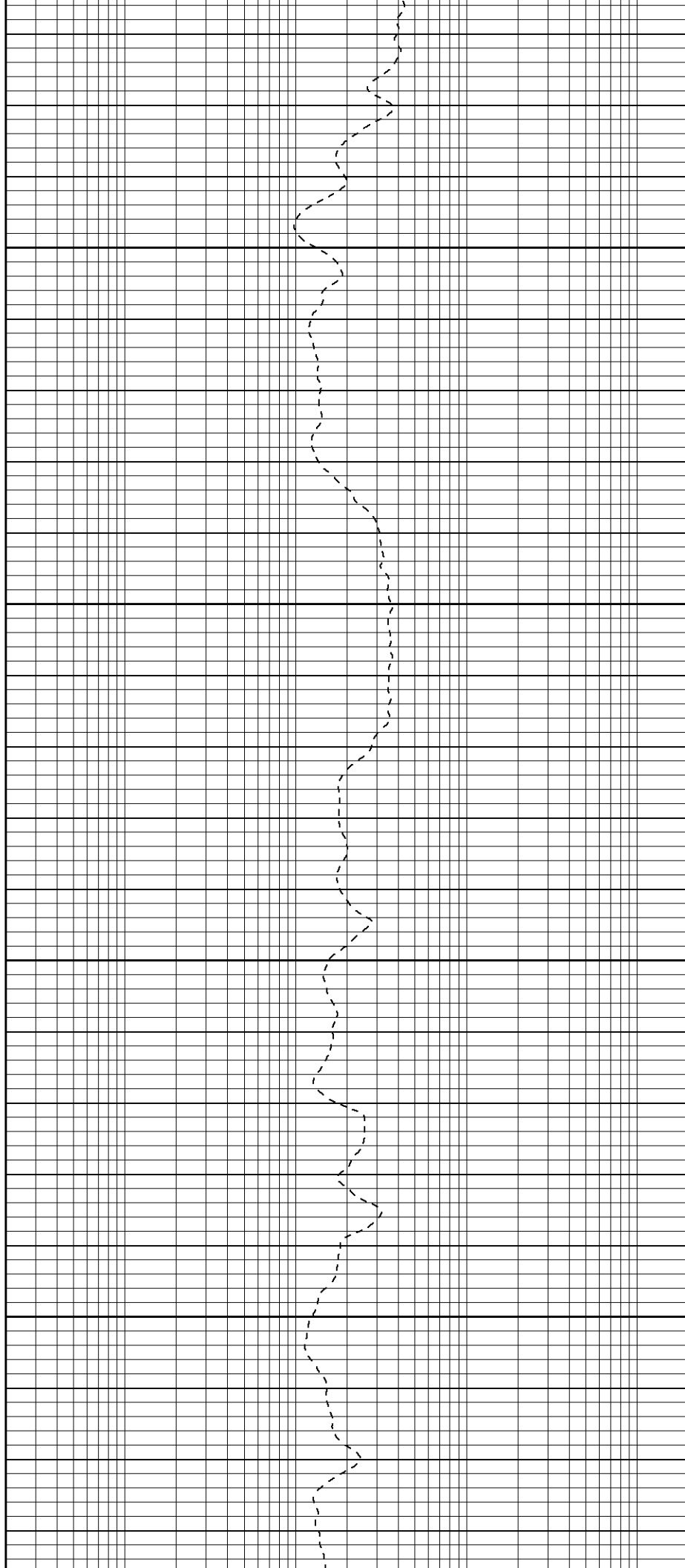


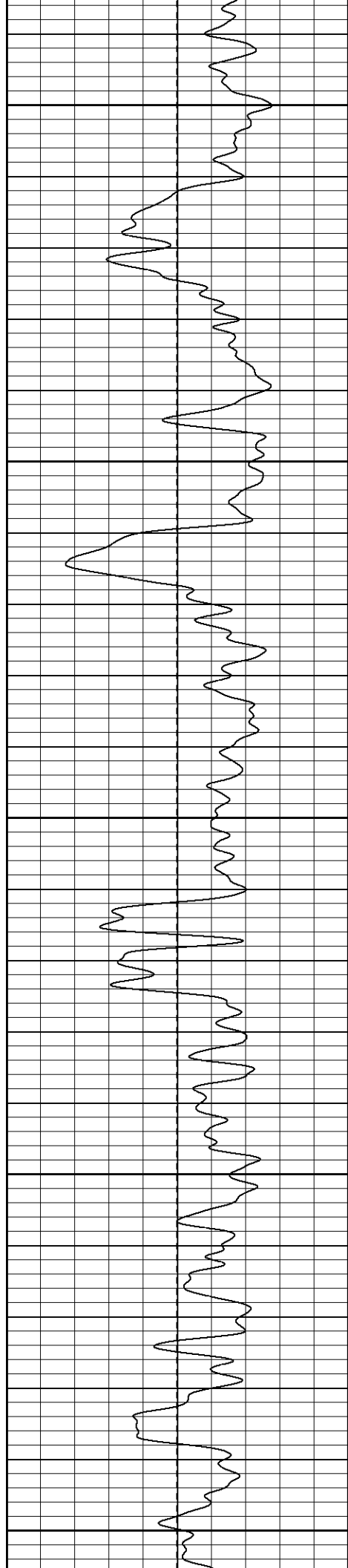
1000

1050

1100

1150





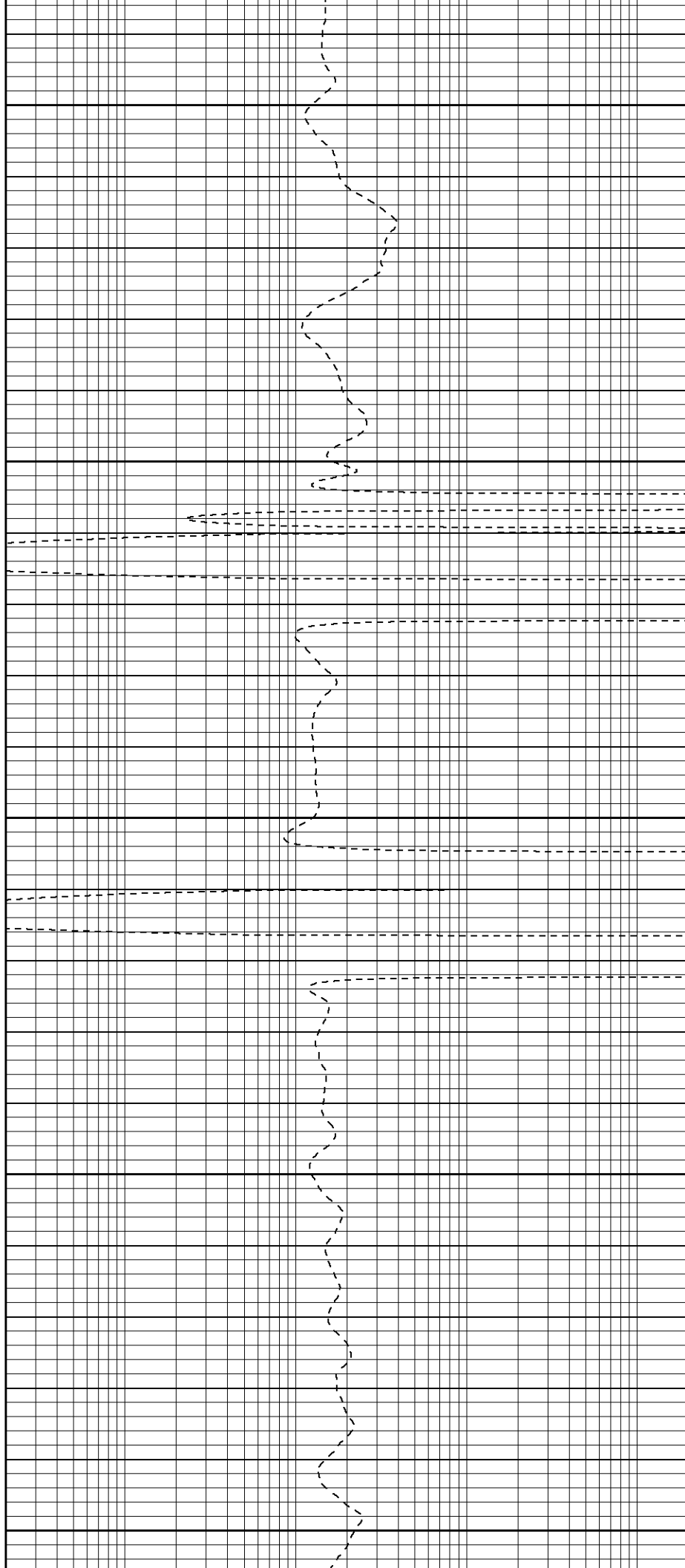
1200

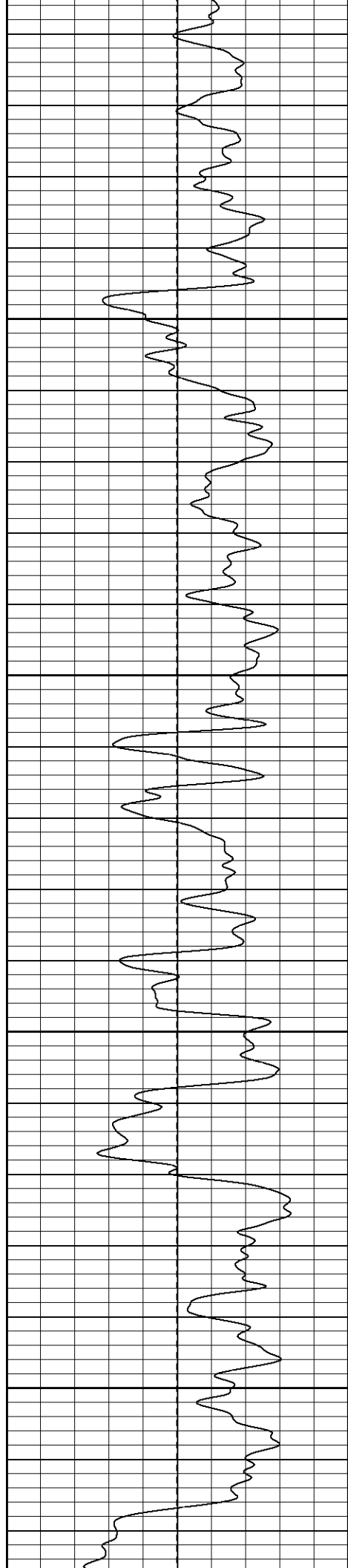
1250

1300

1350

1400



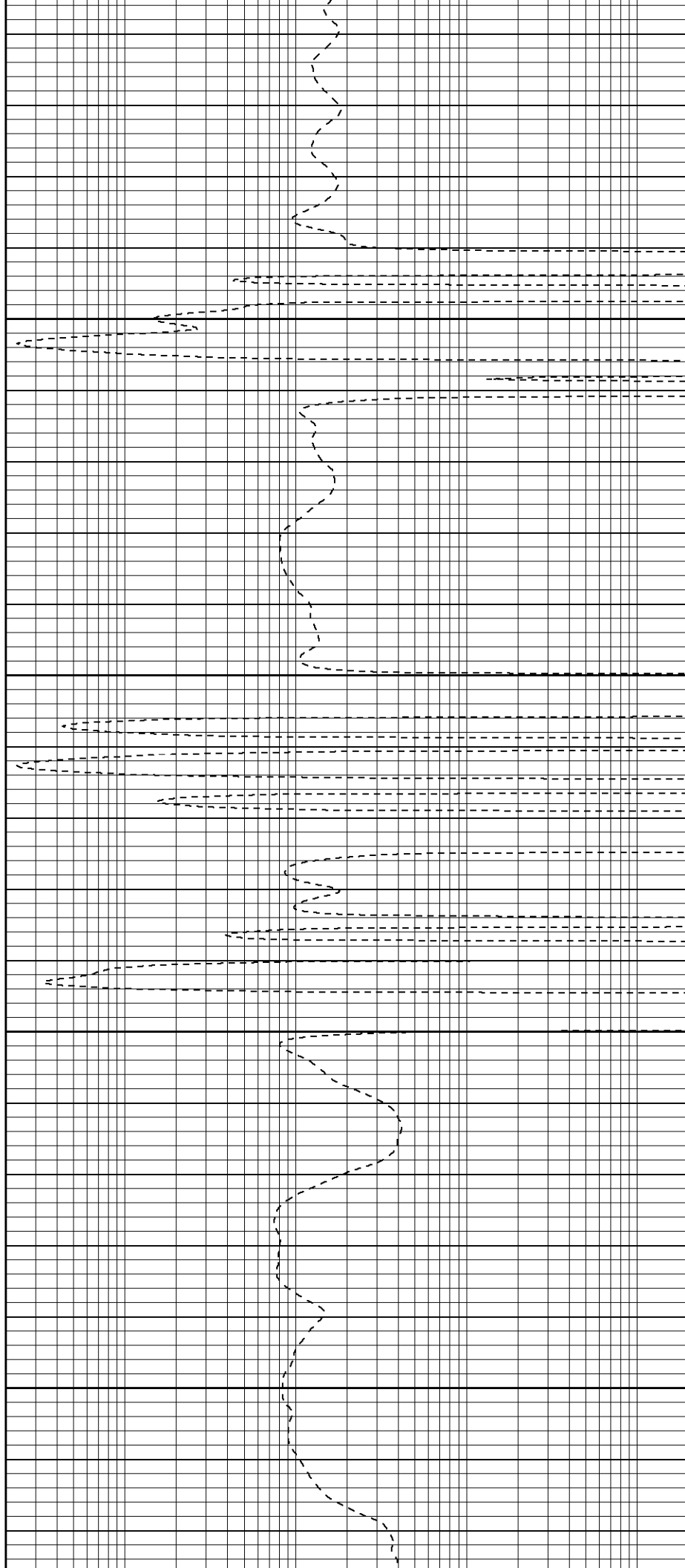


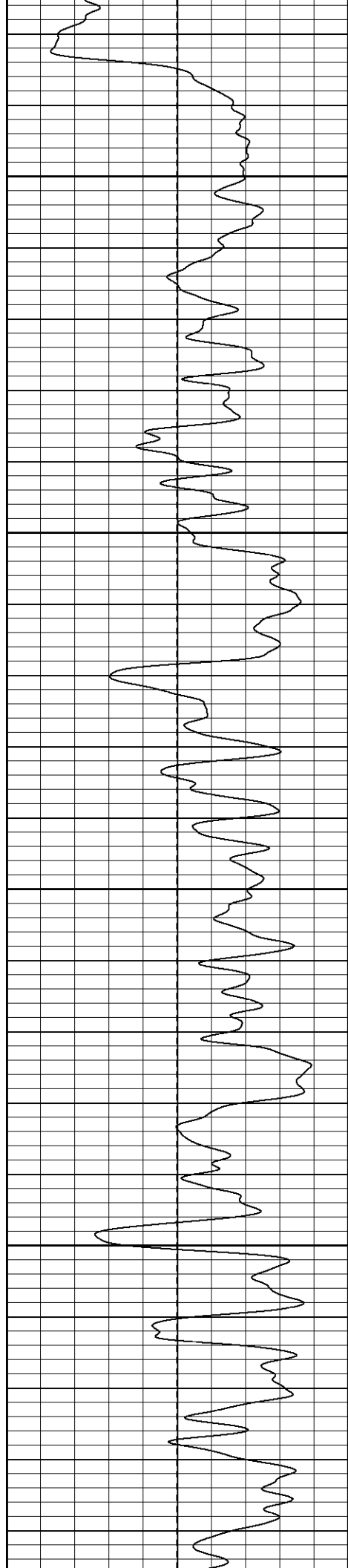
1450

1500

1550

1600



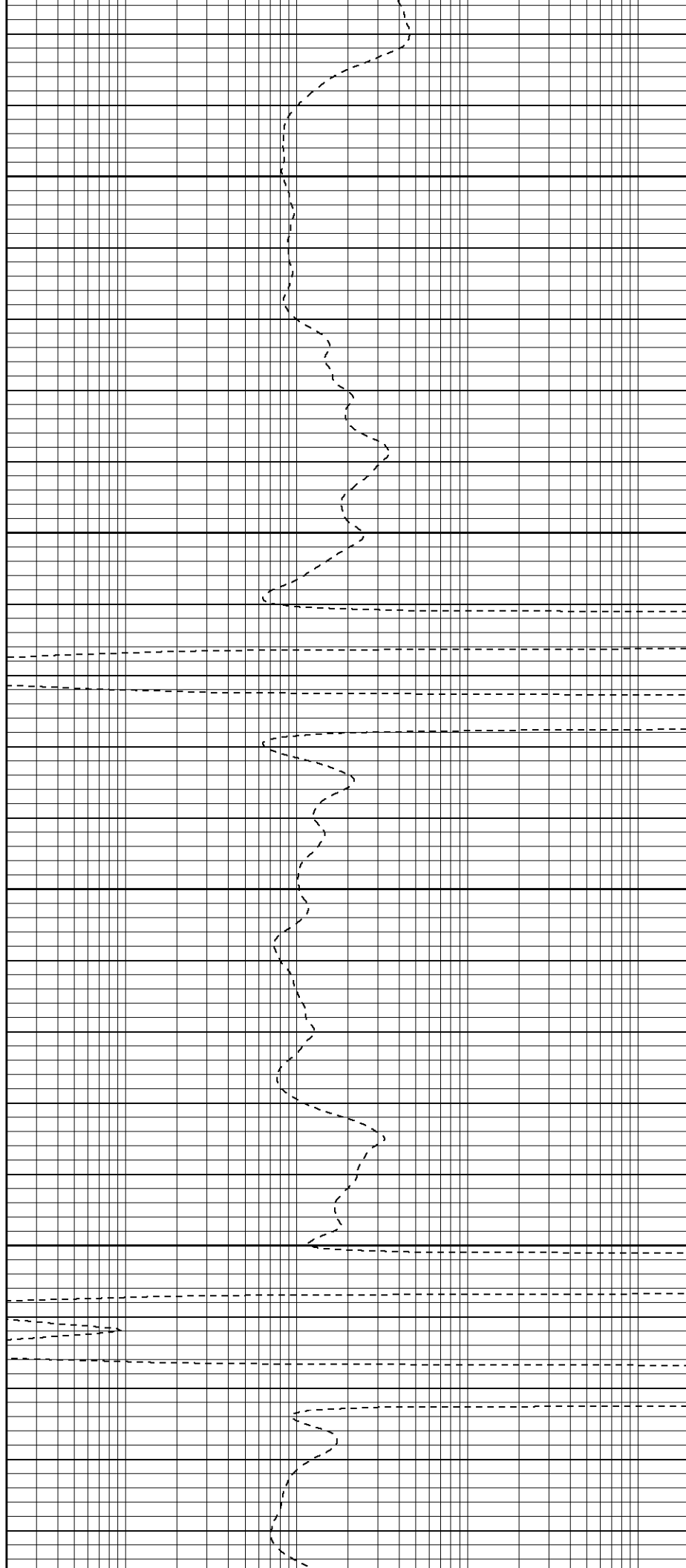


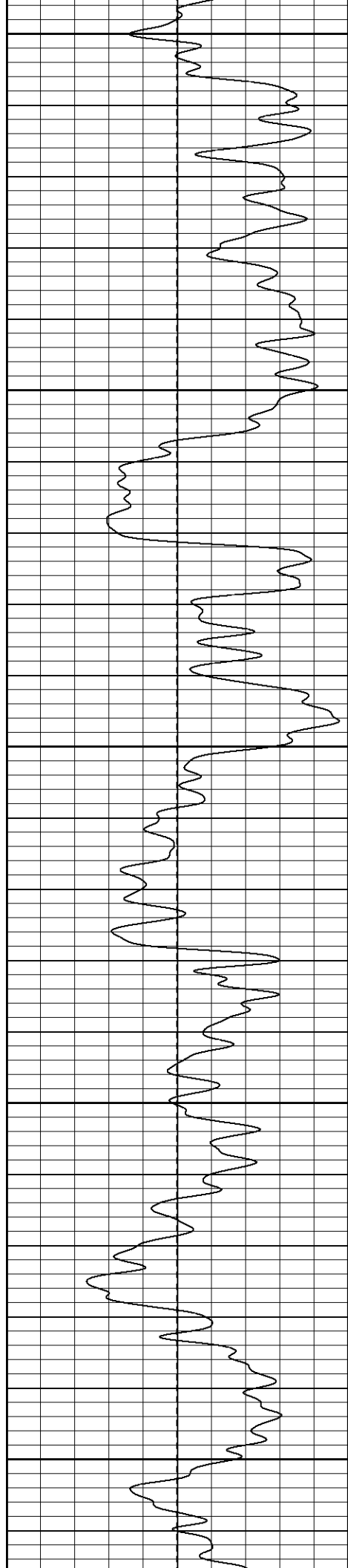
1650

1700

1750

1800





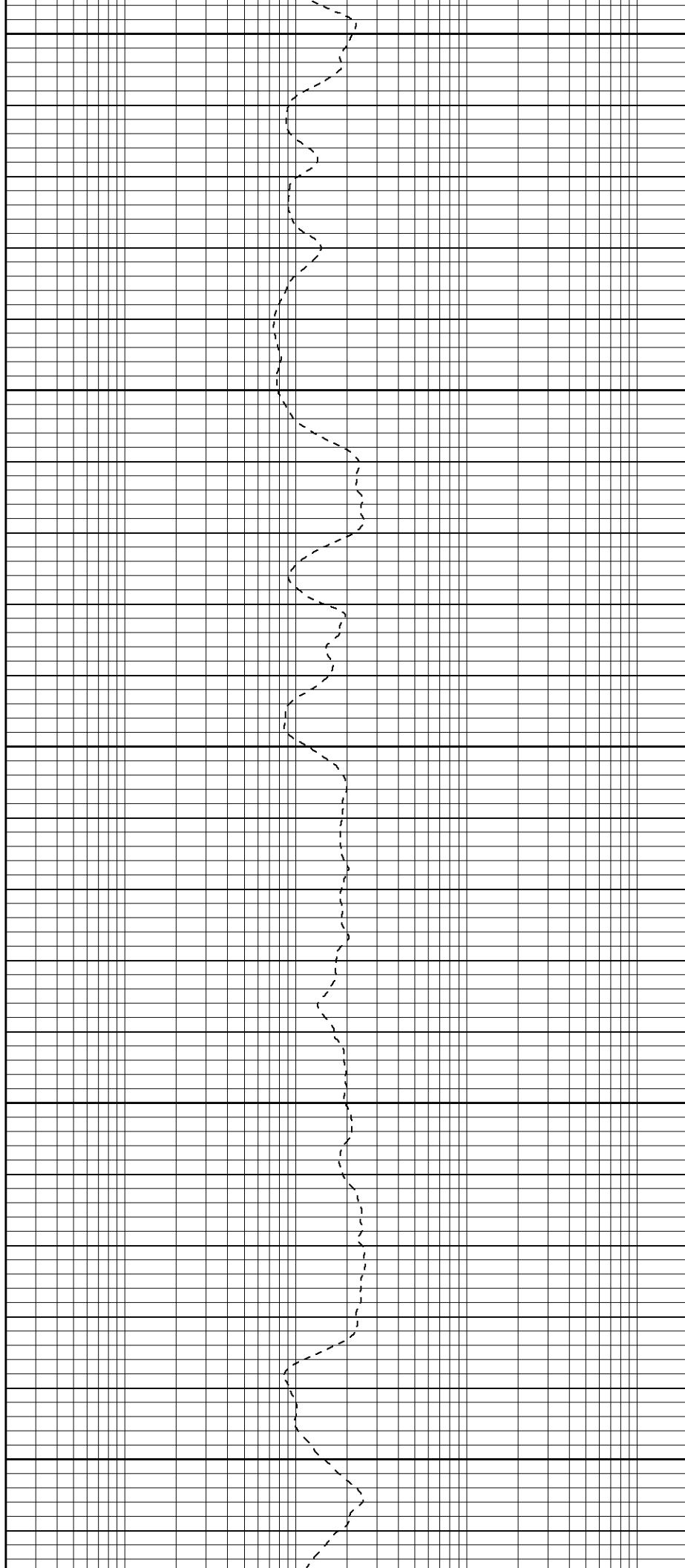
1850

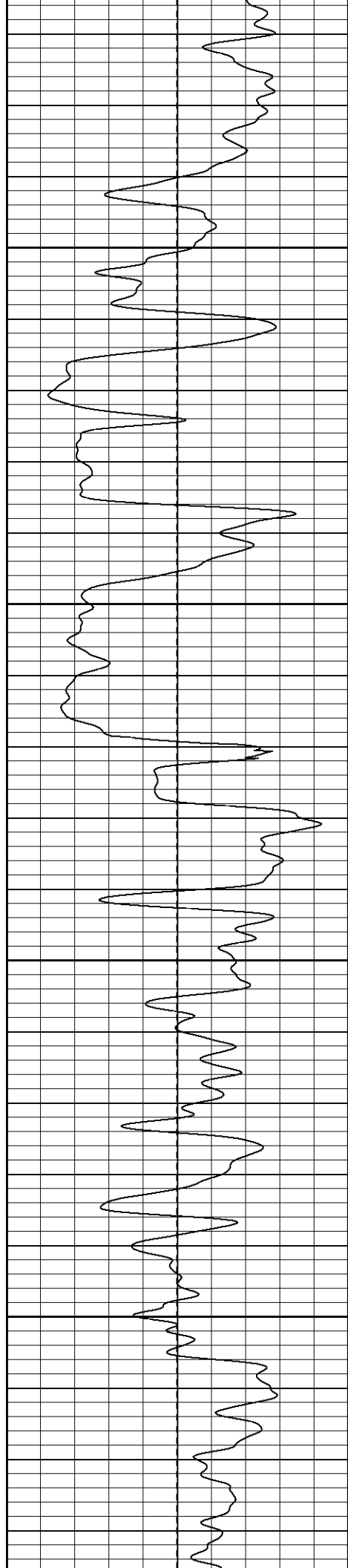
1900

1950

2000

2050



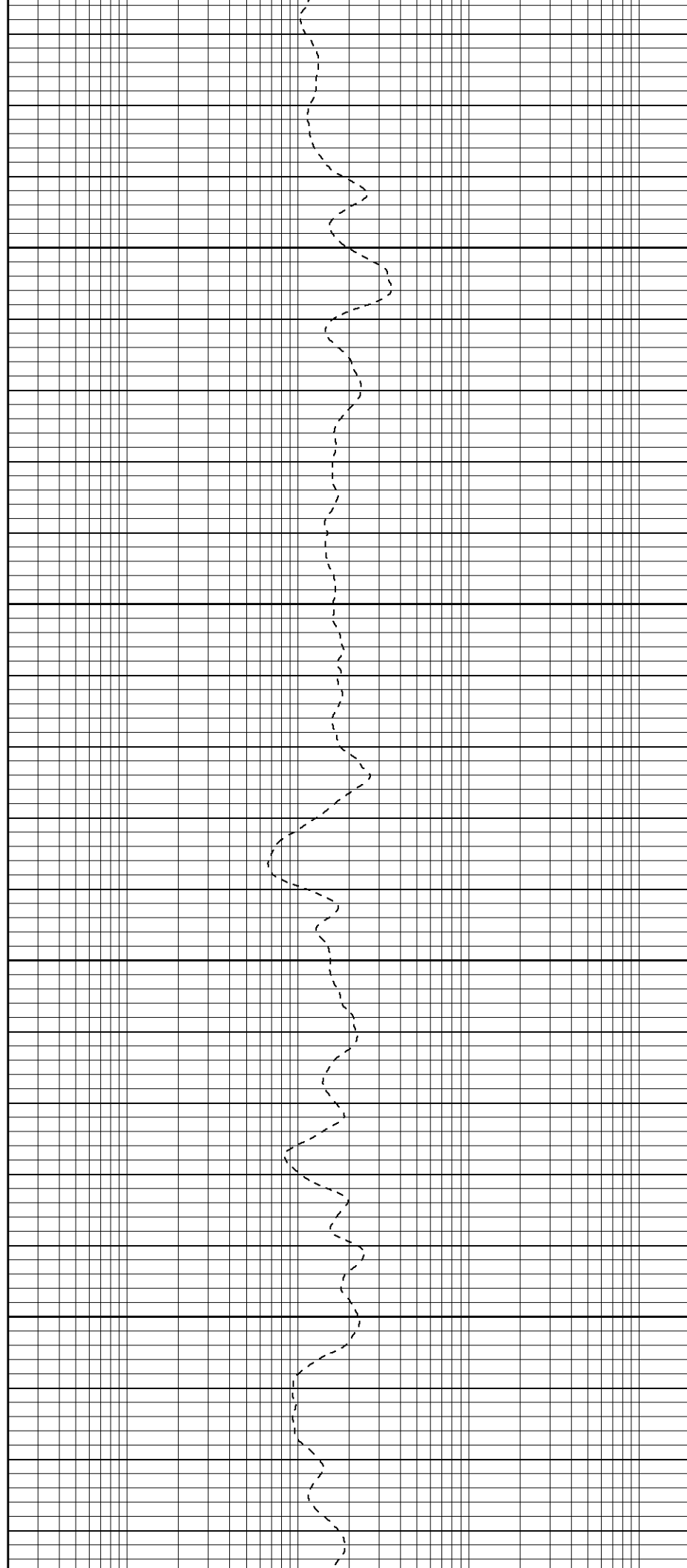


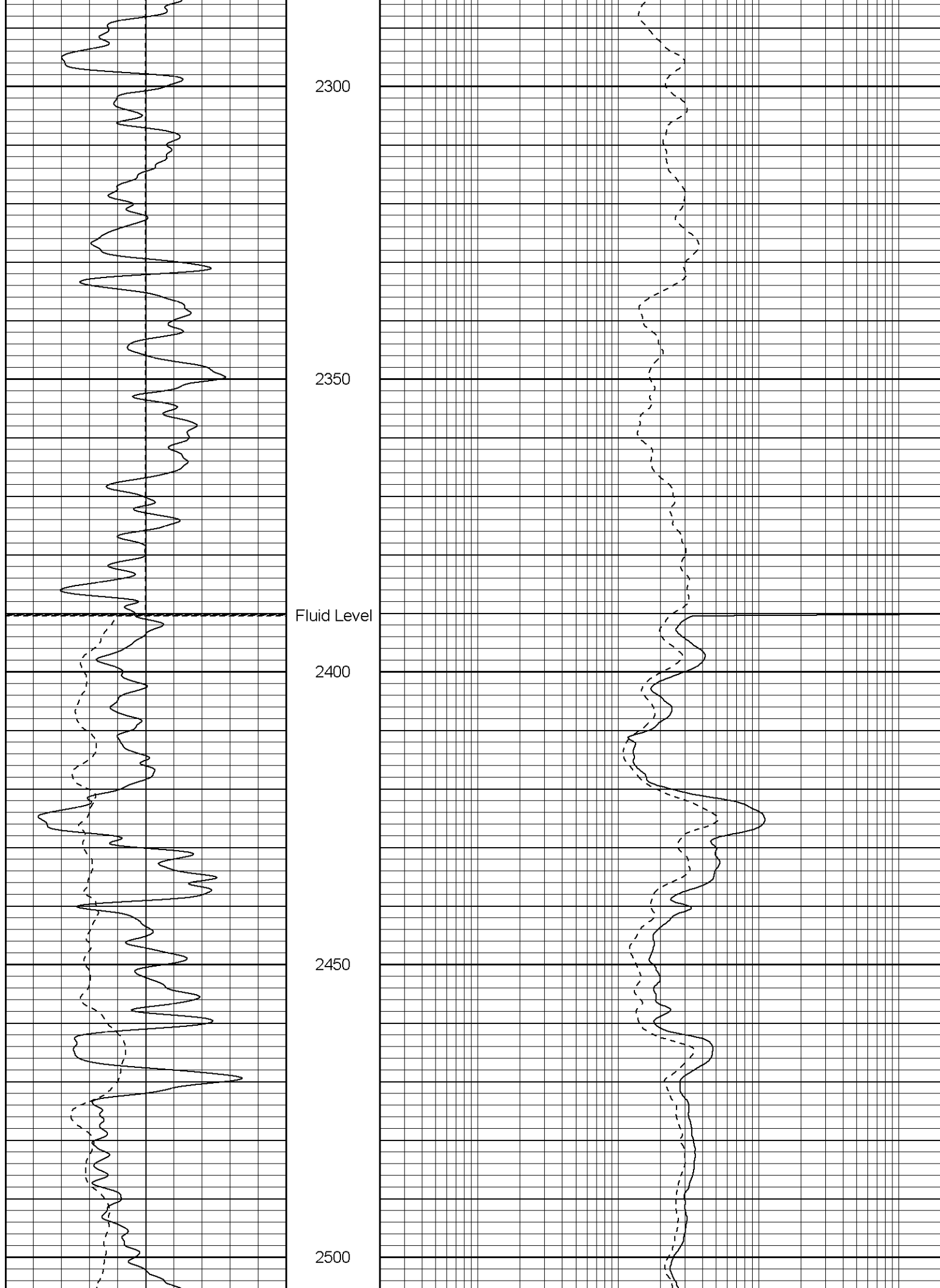
2100

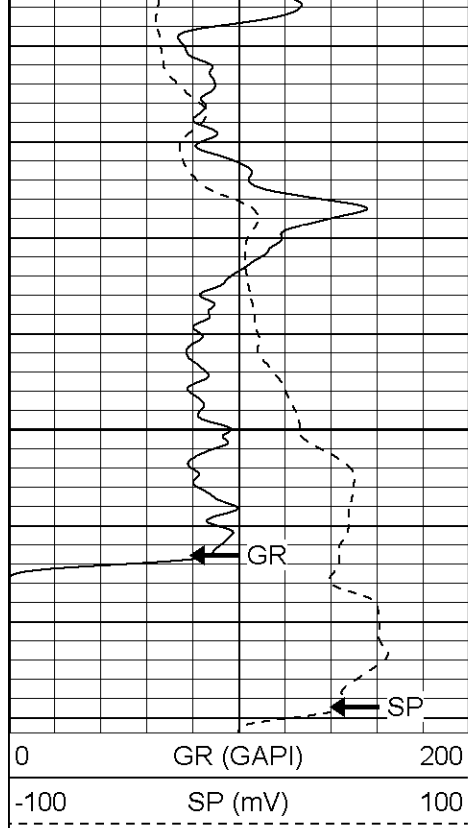
2150

2200

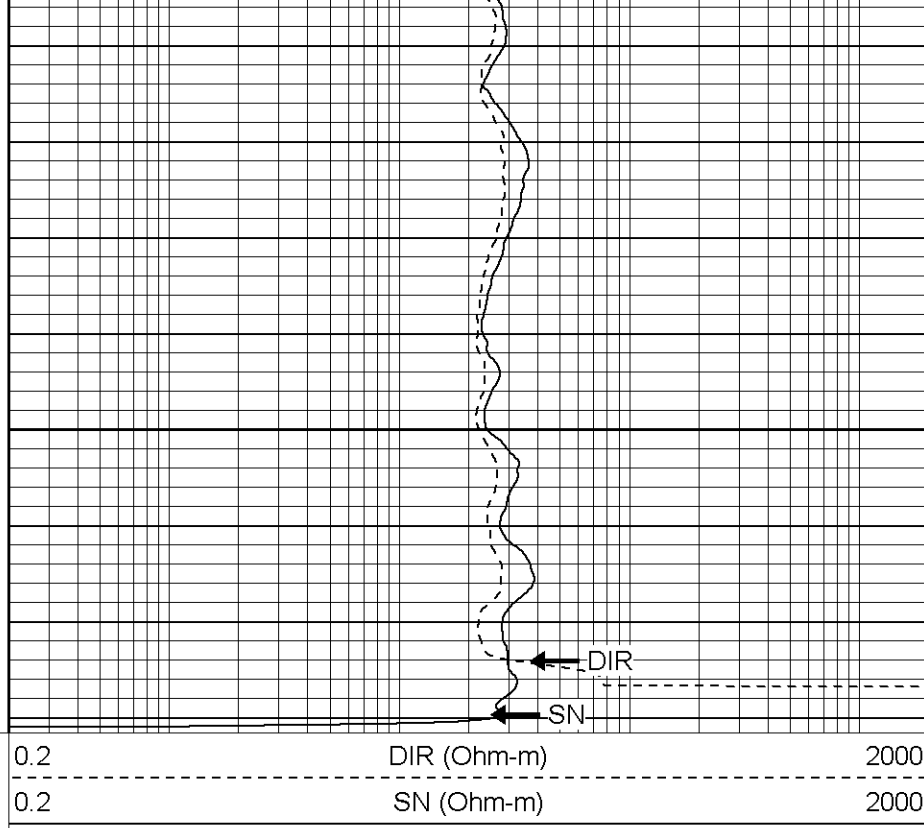
2250







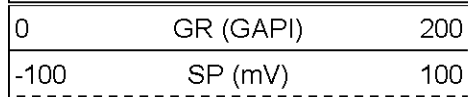
2550



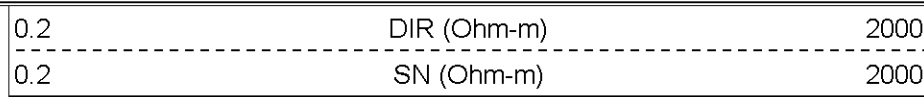
Patterson

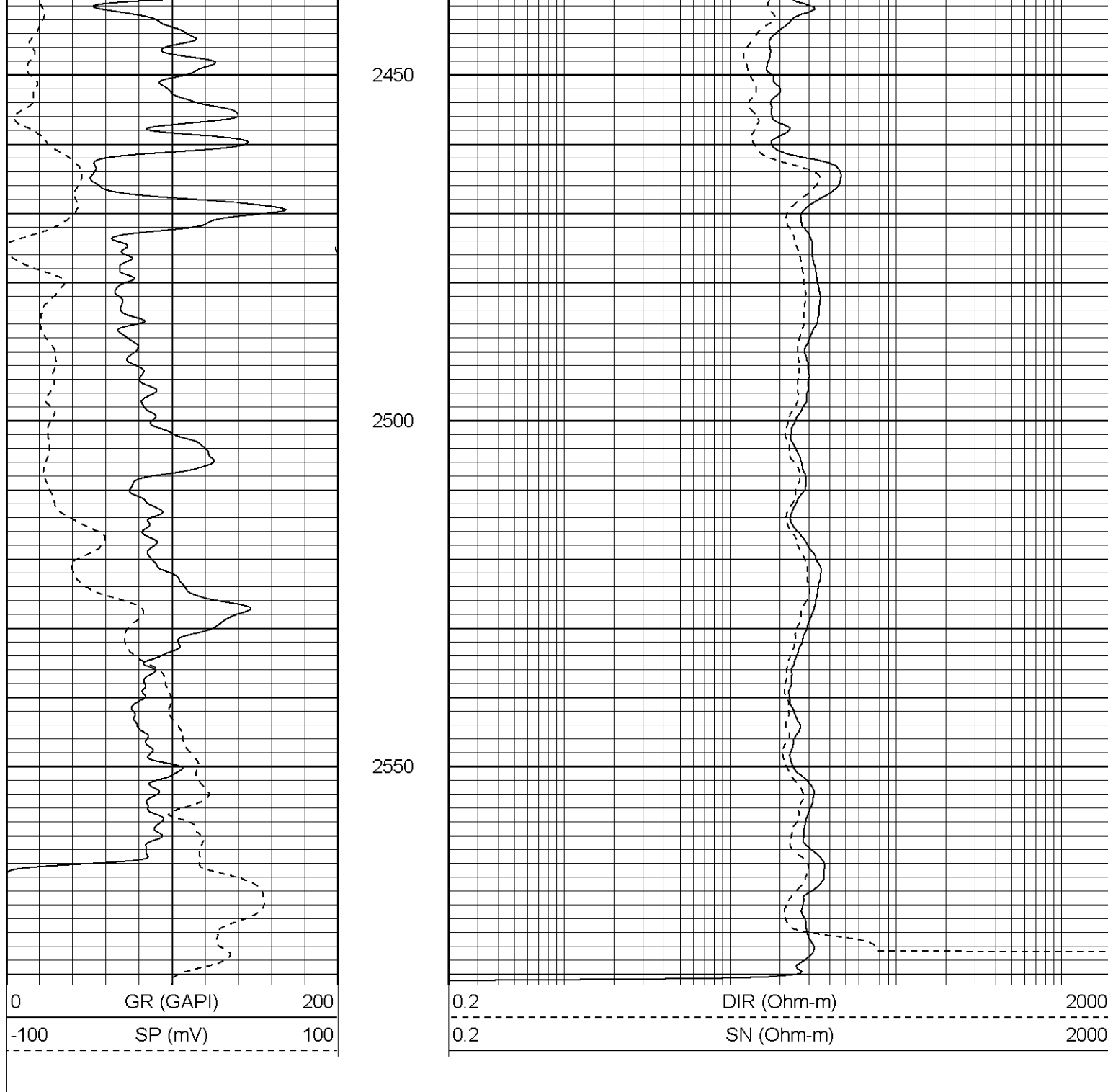
Repeat Section

Database File: flo.db
 Dataset Pathname: pass1.1
 Presentation Format: iel
 Dataset Creation: Thu Sep 22 22:09:08 2005 by Calc Warrior 7.0 STD Ope
 Charted by: Depth in Feet scaled 1:240



2400





Induction Tool Calibration Report				
Serial Number:		106		
Tool Model:		G		
Downhole Cal Performed:		Tue Sep 13 18:52:33 2005		
Surface Cal Performed:		Mon Sep 12 13:52:08 2005		
Surface Calibration:		Air	Loop	
Conductivity Reference:		0.000	450.000	mmho
Conductivity Reading:		-0.060	0.634	V
Internal Reference:		Zero	Cal	
Conductivity Reference:		0.000	500.000	mmho
Conductivity Reading:		0.002	0.633	V
Downhole Calibration:		Internal Zero	Internal Cal	
Conductivity Reference:		0.004	449.717	mmho
Conductivity Reading:		37.351	470.551	V

Short Normal Reference:		0.000	17.000	Ohm-m
Short Normal Reading:		0.006	0.207	V
Results:	Gain		Offset	
	Loop Conductivity:		38.920	
	Downhole Correction:		-38.770	
	Short Normal Resistivity:		-2.500	
Gamma Ray Calibration Report				
Serial Number:		2001		
Tool Model:		OH		
Performed:		Thu Aug 25 08:21:40 2005		
Calibrator Value:		1.0	GAPI	
Background Reading:		0.0	cps	
Calibrator Reading:		1.0	cps	
Sensitivity:		0.2000	GAPI/cps	

Sensor	Offset (ft)	Schematic	Description	Len (ft)	OD (in)	Wt (lb)
CHD	19.50		None	0.75	1.50	5.00
GR	17.25		GR-OH (2001) SIE	3.50	3.25	40.00
DIC	6.89		IEL-G (106)	15.25	4.00	178.00
SP	1.50					
SN	1.00					
		Dataset:	/field/well/run1/_plots/_jobs_/sil			
		Total Length:	19.50 ft			
		Total Weight:	223.00 lb			
		O.D.	4.00 in			