

Patterson

**CEMENT
BOND
LOG**

Company Red River Ranch Holdings LLC
Well Red River Ranch 11-6
Field Purgatoire River
County Las Animas State Colorado

Location: API # : 05 071 08620 00
507' FNL & 2404' FWL
Other Services
TEMP.
Permanent Datum SEC 11 TWP 35S RGE 68W
Log Measured From Ground Level Elevation 8891'
Drilling Measured From Ground Level
Elevation
K.B. -----
D.F. -----
G.L. 8891'

Company Red River Ranch Holdings LLC
Well Red River Ranch 11-6
Field Purgatoire River
County Las Animas
State Colorado

Date 4-04-06

Run Number	One
Depth Driller	1620'
Depth Logger	1487'
Bottom Logged Interval	1485'
Top Log Interval	Surface
Open Hole Size	7 7/8"
Type Fluid	Water
Density / Viscosity	///
Max. Recorded Temp.	89 DEG F
Estimated Cement Top	42'
Time Well Ready	ROA
Time Logger on Bottom	2:10 P.M.
Equipment Number	T720
Location	Trinidad
Recorded By	M. Norton
Witnessed By	Mr. Shreyes Minton

Borehole Record			Tubing Record				
Run Number	Bit	From	To	Size	Weight	From	To

Casing Record	Size	Wgt/Ft	Top	Bottom
Surface String	8 5/8"		00	206'
Prot. String				
Production String	5 1/2"		00	N/A
Liner				

<<< Fold Here >>>

All interpretations are opinions based on inferences from electrical or other measurements and we cannot and do not guarantee the accuracy or correctness of any interpretation, and we shall not, except in the case of gross or willful negligence on our part, be liable or responsible for any loss, costs, damages, or expenses incurred or sustained by anyone resulting from any interpretation made by any of our officers, agents or employees. These interpretations are also subject to our general terms and conditions set out in our current Price Schedule.

Comments

Well Directions:

Picketwire Store, Turn Left, Drive to T, Turn Left, Follow Main Road to Guard Gate, Through Gate, Follow Main Road 3.7 Mi to Y, Take Left Fork, Stay on MAin Road Up Steep Hill to Cattle Pens on Left, Continue Straight, Follow Main Road to T, Turn Left, Stay right On Main road to Y, Take Left Fork, Stay On Road to Location.

Patterson

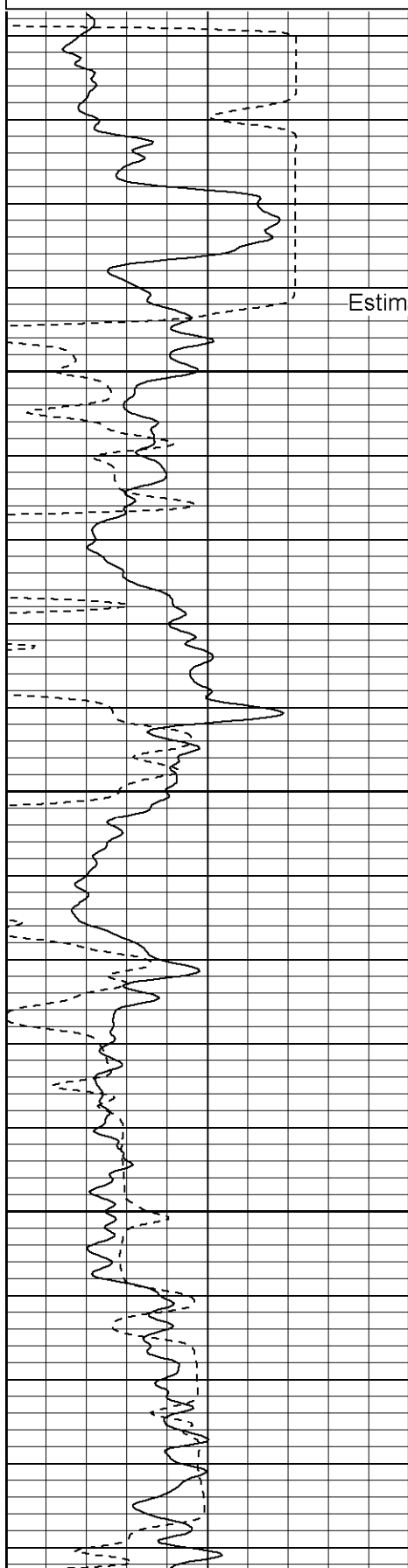
Main Pass

Database File: rrr116040406b.db
Dataset Pathname: pass2
Presentation Format: cblrt
Dataset Creation: Tue Apr 04 14:17:27 2006 by Log Warrior 7.0 STD Ope
Charted by: Depth in Feet scaled 1:240

0	GR (GAPI)	200
400	TT3 (usec)	200

0	AMP3 (mV)	100
18	CCL	-2

200	Variable Density	1200
-----	------------------	------

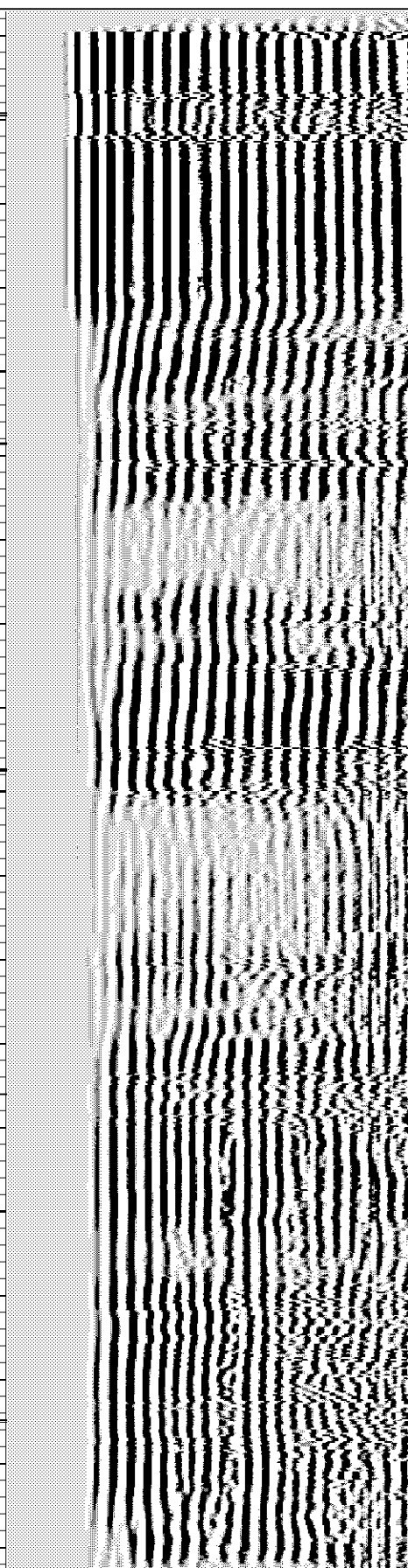
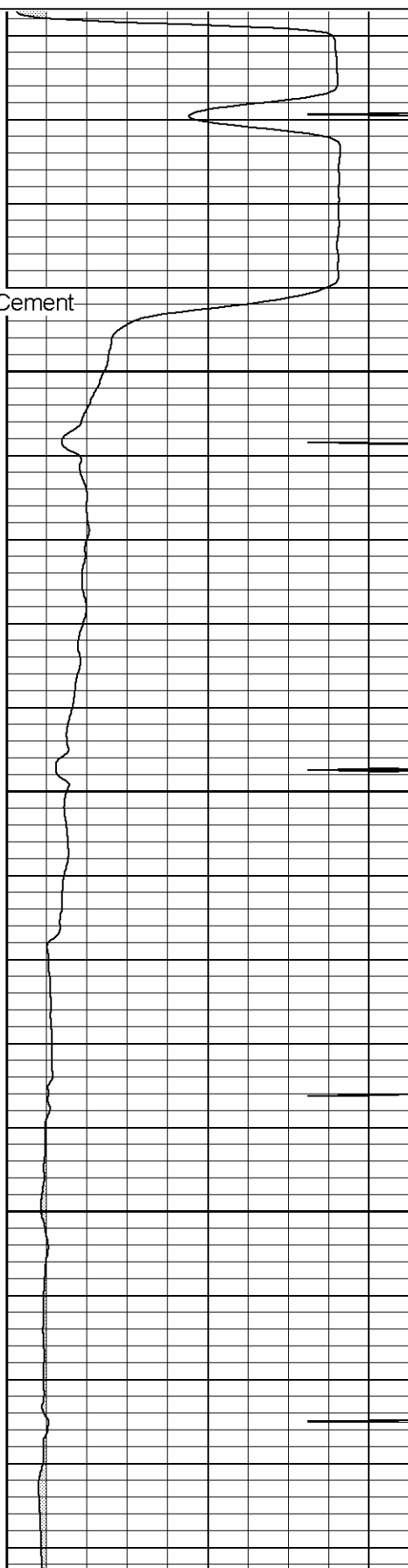


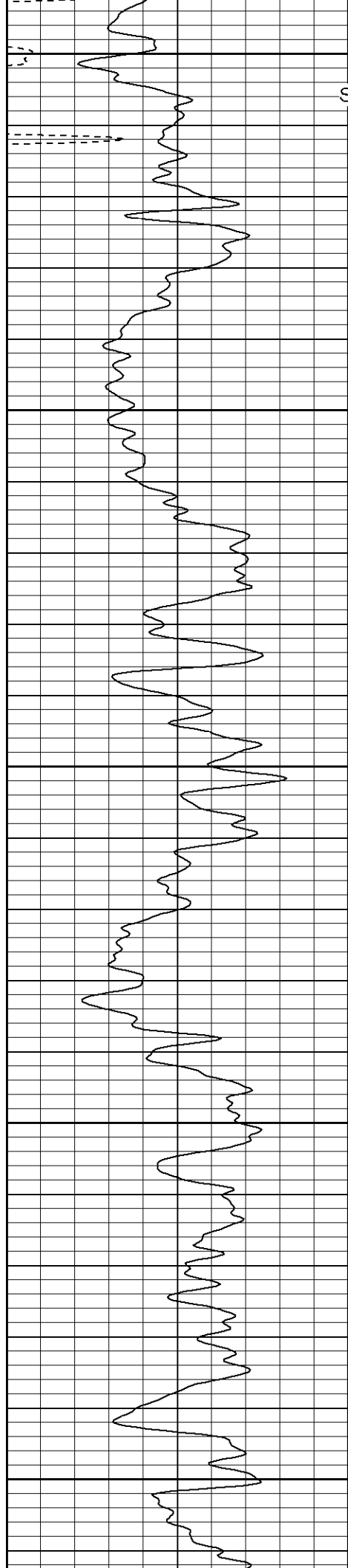
Estimated Top of Cement

50

100

150





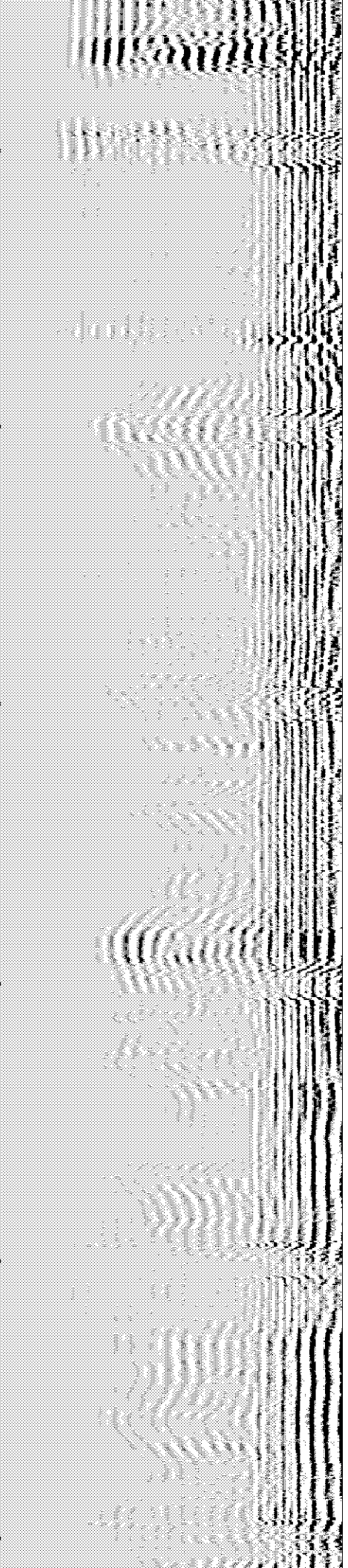
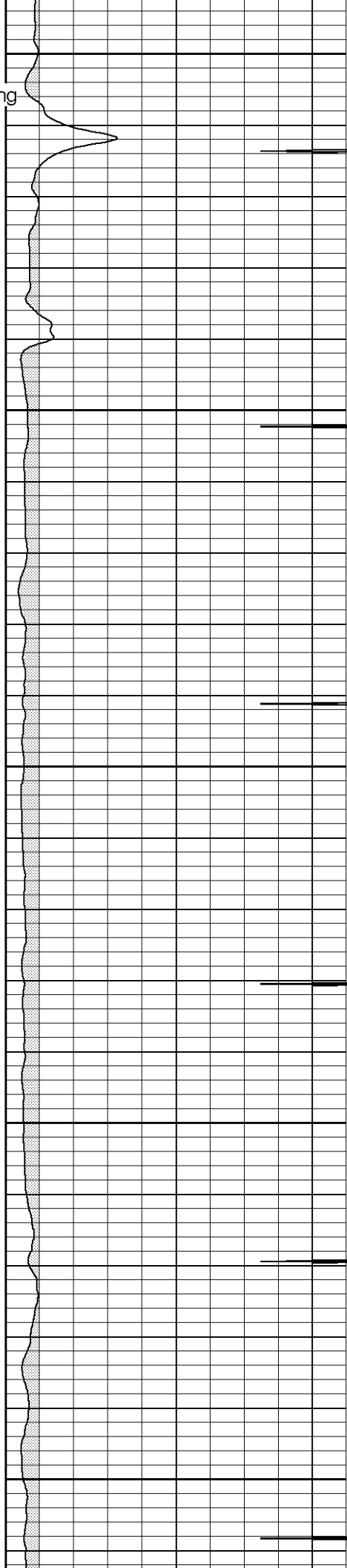
200
Surface Casing

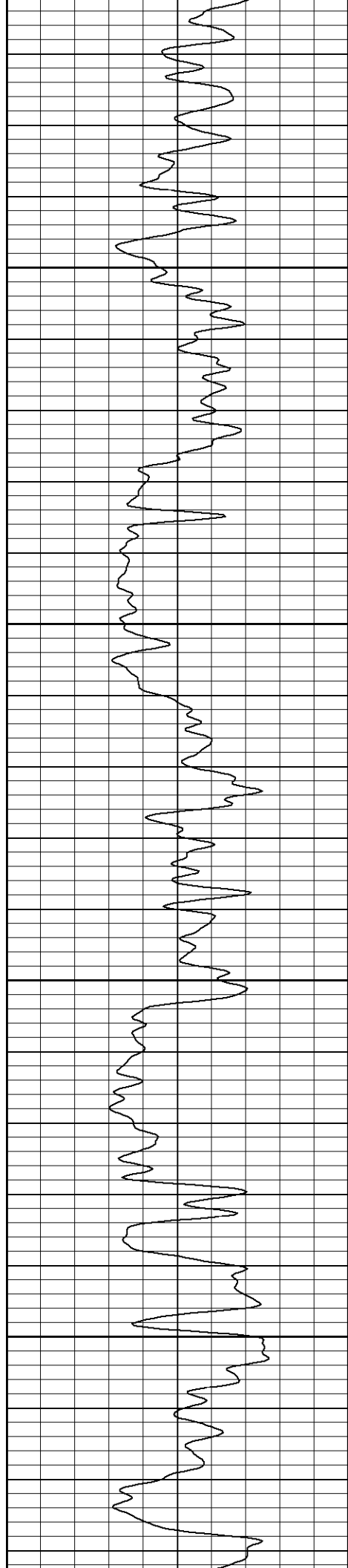
250

300

350

400



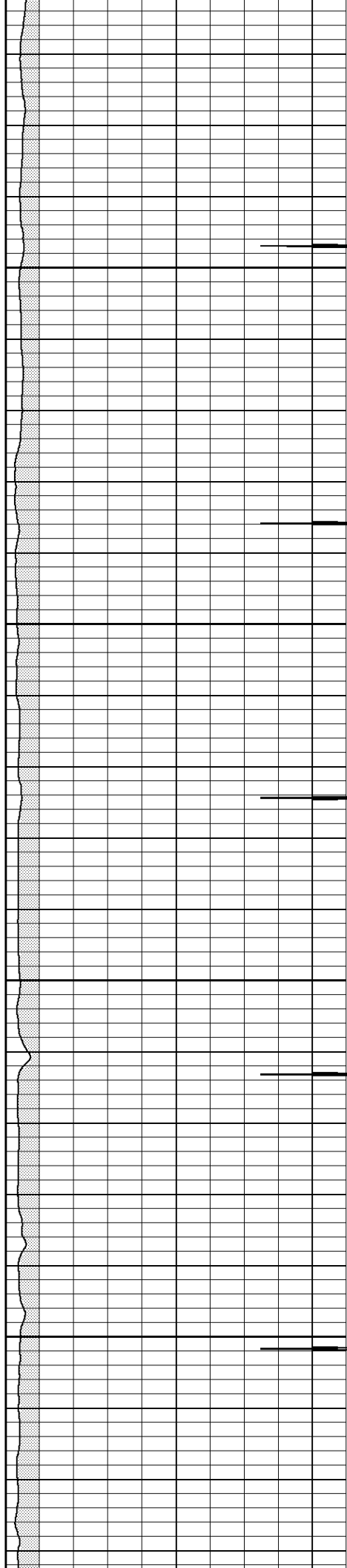


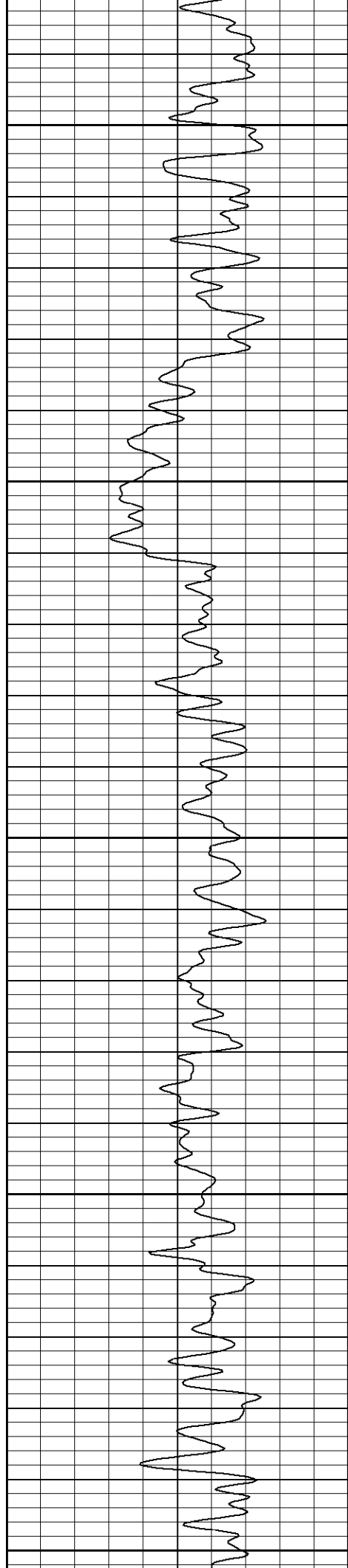
450

500

550

600





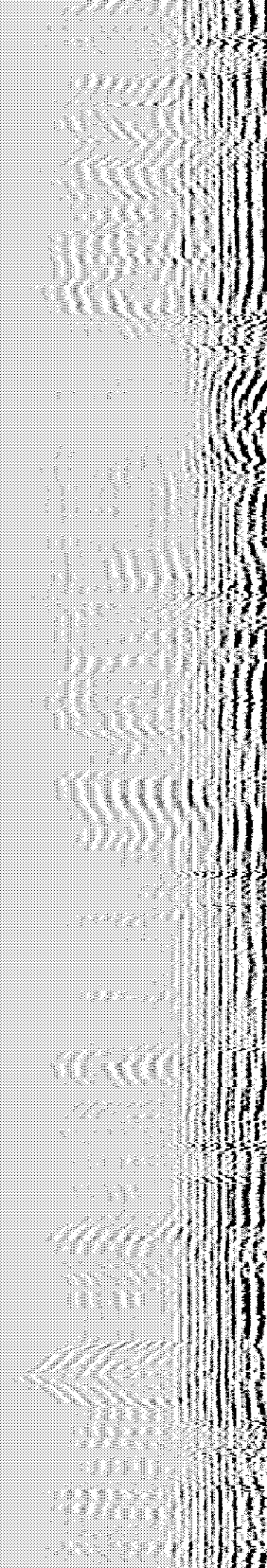
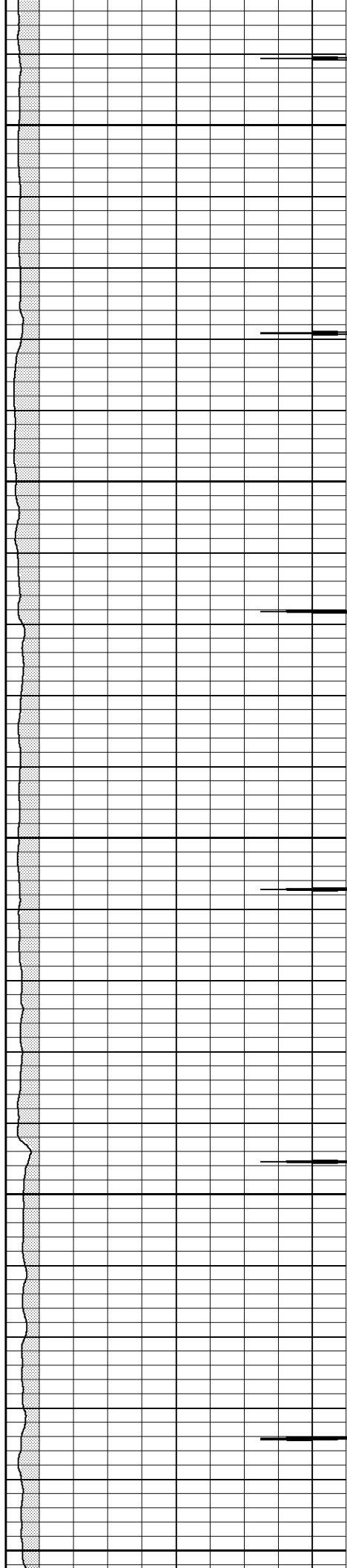
650

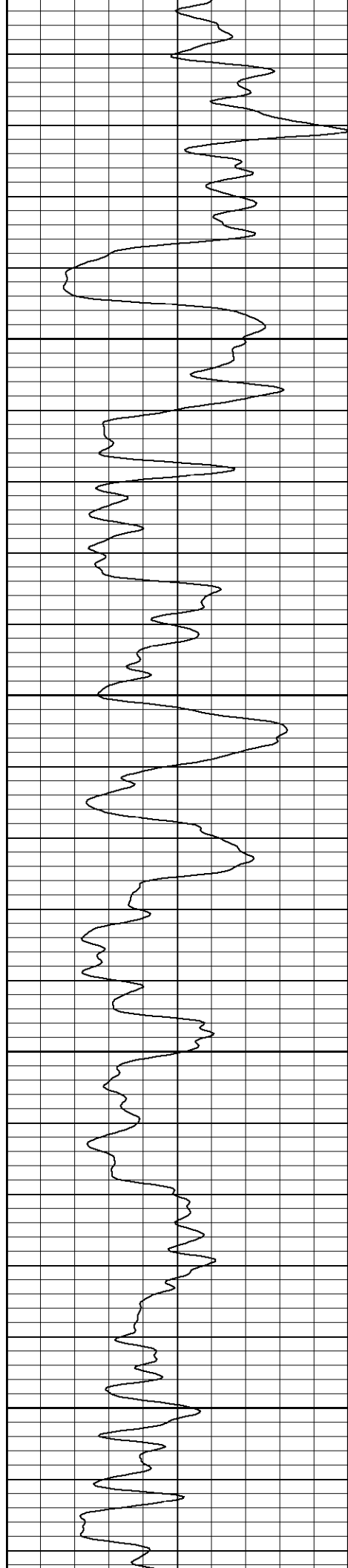
700

750

800

850



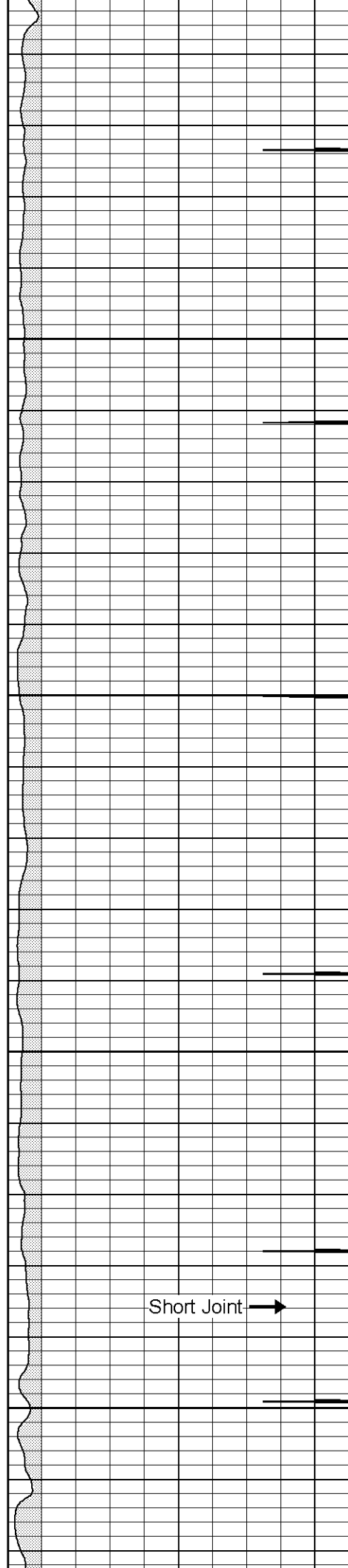


900

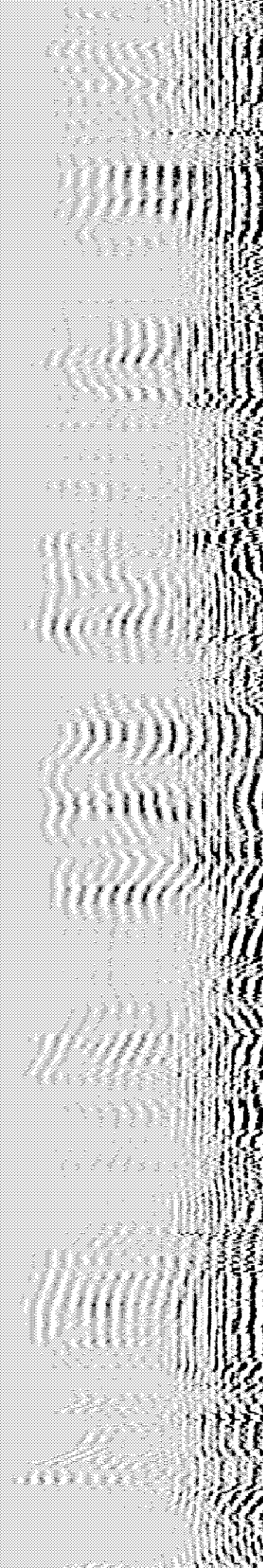
950

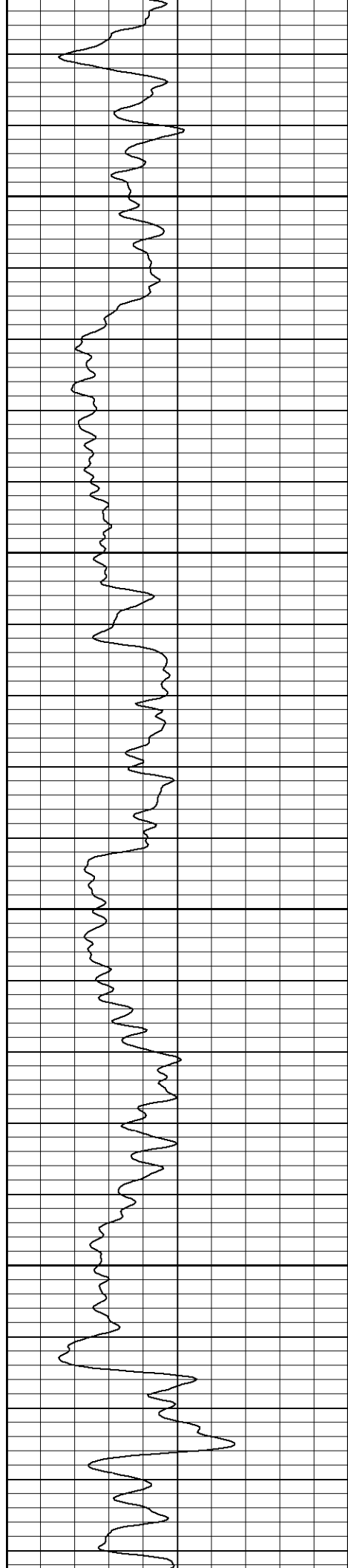
1000

1050



Short Joint →



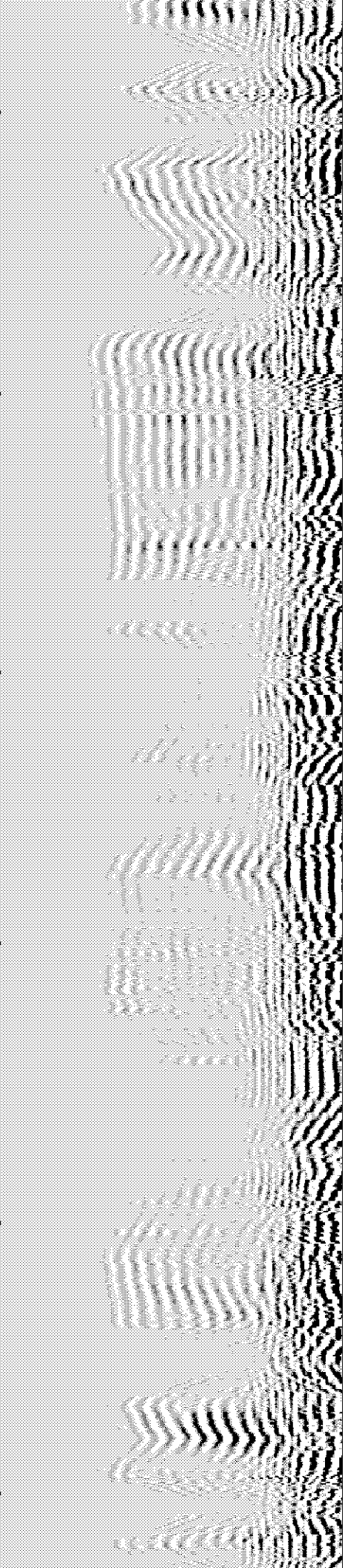
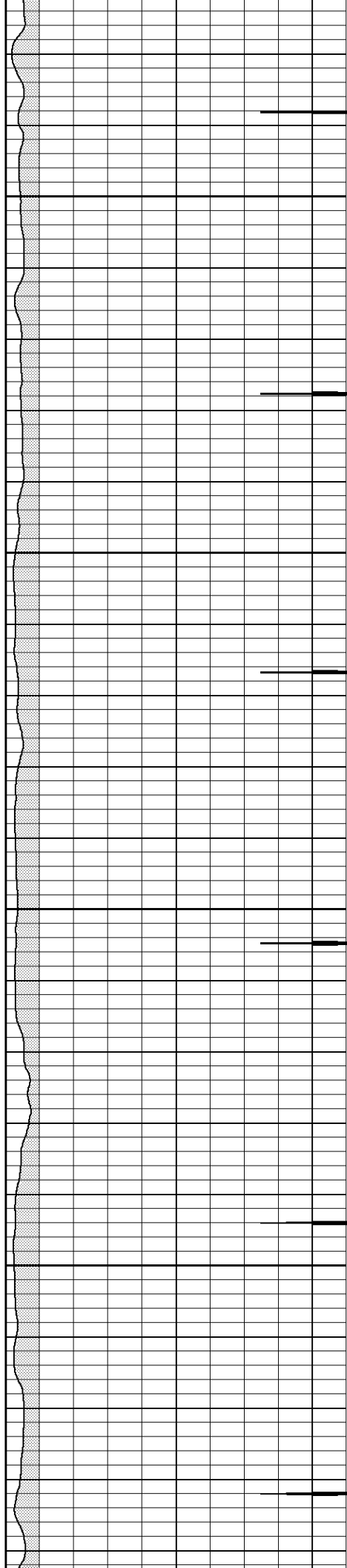


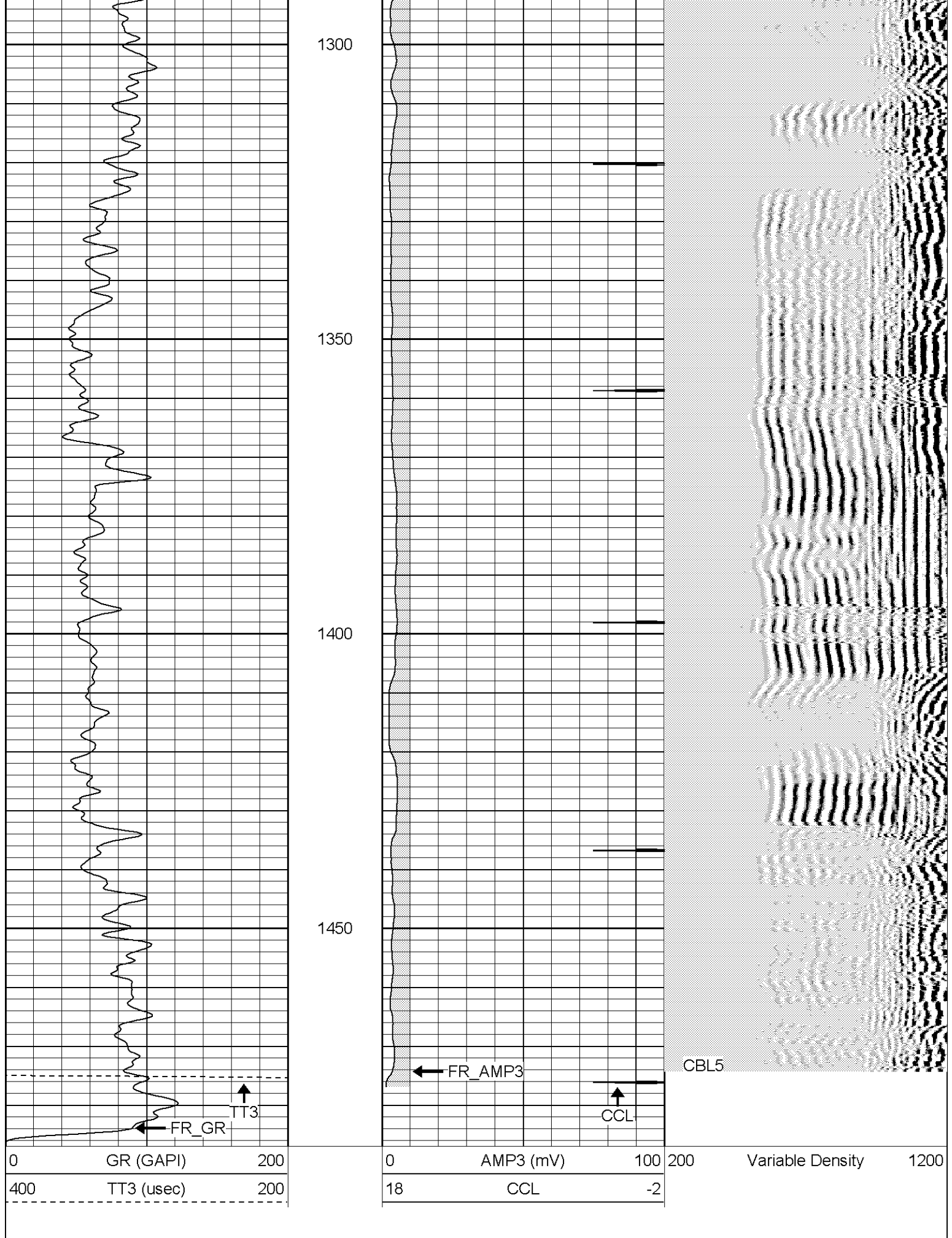
1100

1150

1200

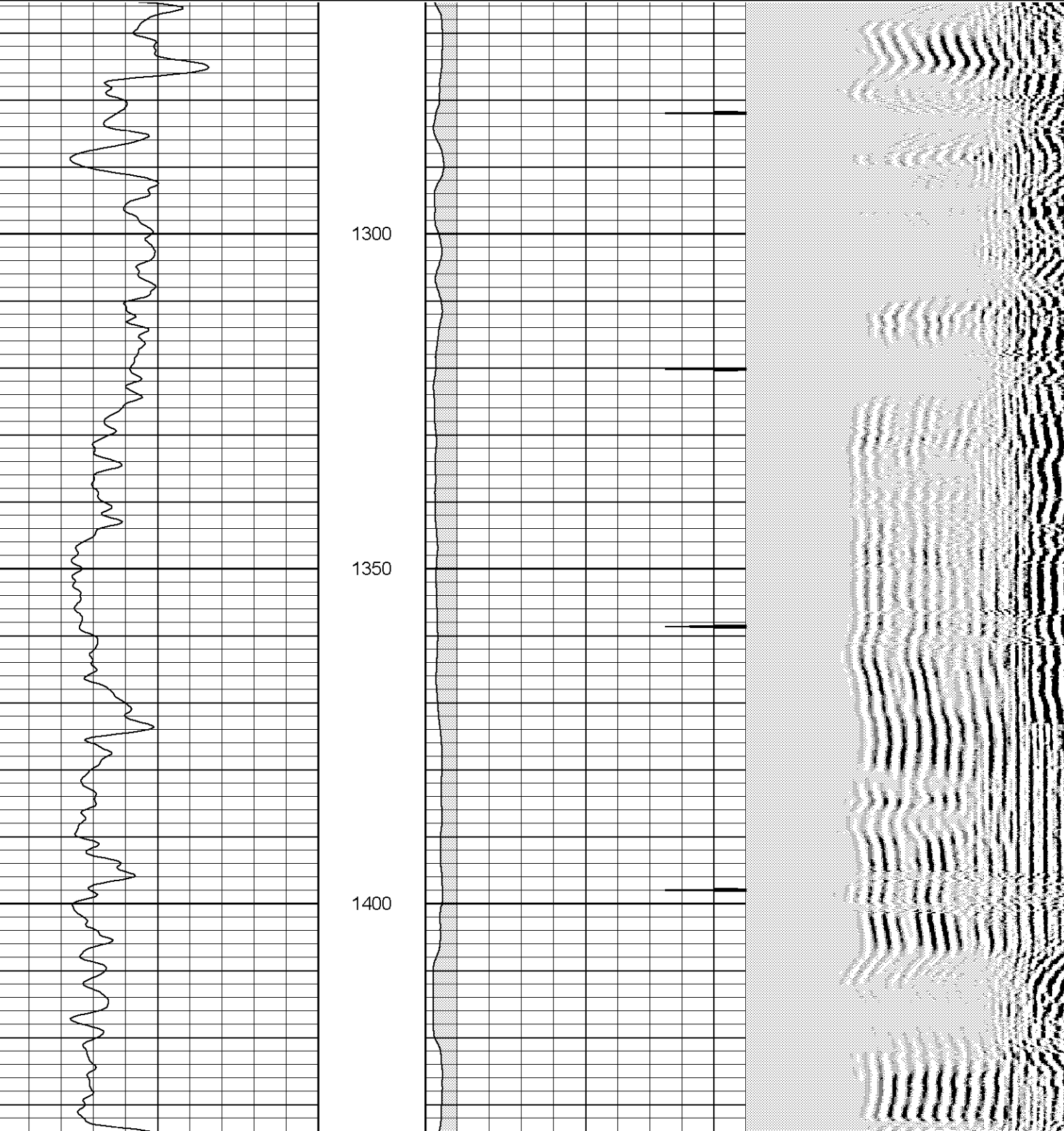
1250

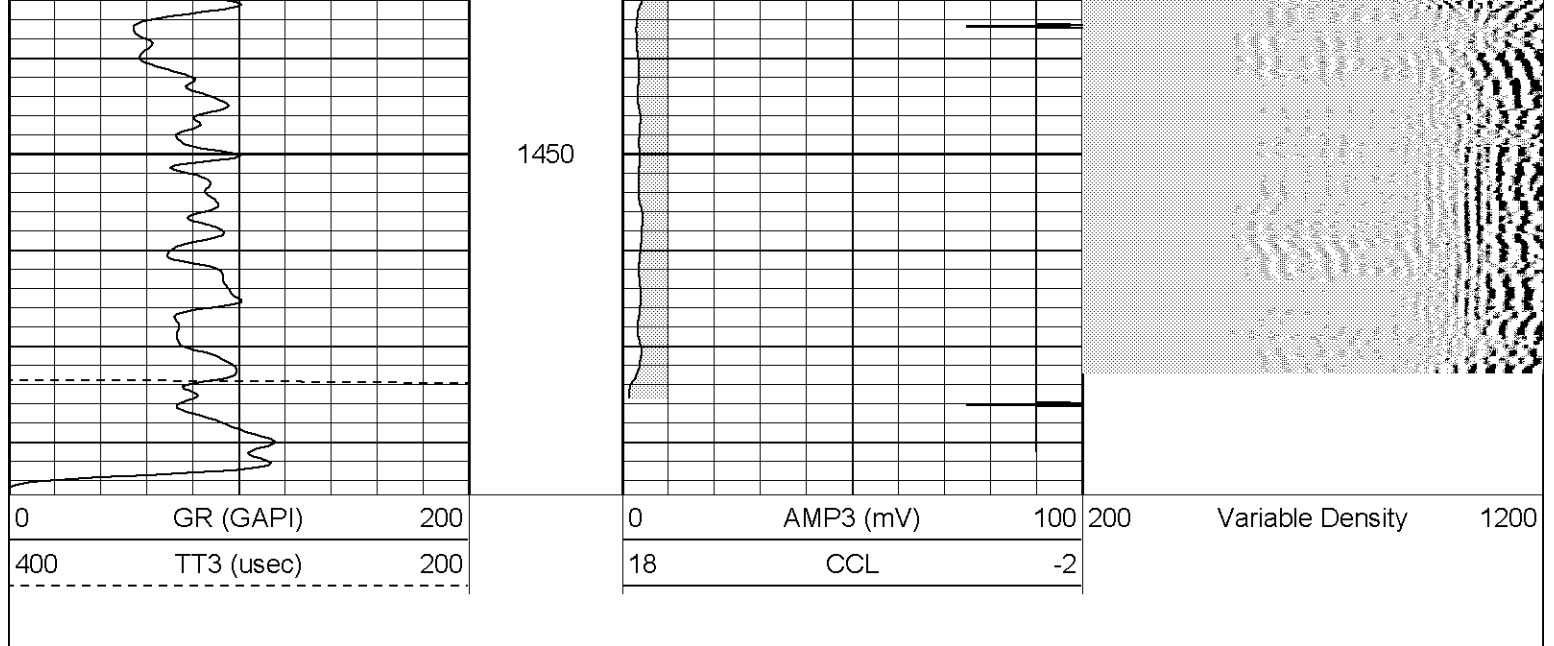




Database File: rrr116040406b.db
Dataset Pathname: pass1
Presentation Format: cblrt
Dataset Creation: Tue Apr 04 14:10:32 2006 by Log Warrior 7.0 STD Ope
Charted by: Depth in Feet scaled 1:240

0	GR (GAPI)	200	0	AMP3 (mV)	100	200	Variable Density	1200
400	TT3 (usec)	200	18	CCL	-2			





Gamma Ray Calibration Report

Serial Number: 2.75
 Tool Model: Titan2.75
 Performed: Tue Apr 04 09:15:15 2006

Calibrator Value: 1.0 GAPI

Background Reading: 0.0 cps
 Calibrator Reading: 1.0 cps

Sensitivity: 0.9500 GAPI/cps

Cement Bond Log Calibration Report

Serial Number: Titan4
 Tool Model: T4
 Performed: Tue Apr 04 11:33:24 2006

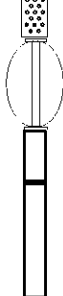
Depth: 1421.41 ft
 Casing Diameter: 5.5 in

3' Spacing 5' Spacing

Signal Zero: 1 mV
 Calibrated Amplitude: 85 mV
 Reading at Signal Zero: -0.01 V
 Reading in Free Pipe: 1.3 V

Gain: 64.1221 45.4054
 Offset: 1.64122 1

Sensor	Offset (ft)	Schematic	Description	Len (ft)	OD (in)	Wt (lb)
CHD	20.38		None	0.75	1.50	5.00
CENT	19.63		X	3.00	1.69	25.00
WVF5	12.82		CBL-T4 (Titan4) Titan4	8.15	2.25	110.00
WVF3	11.82					

CENT	8.48		X	3.00	1.69	25.00
CCL	4.27		CCL-Titan2.75 (2.75)	1.71	2.75	15.00
GR	1.42		GR-Titan2.75 (2.75)	3.77	2.75	40.00
Dataset: /field/well/run/_plots/_jobs/_cbl Total Length: 20.38 ft Total Weight: 220.00 lb O.D. 2.75 in						